

# Chapter 21

## Archaeology and Sclerochronology of Marine Bivalves



Paul G. Butler, Pedro S. Freitas, Meghan Burchell, and Laurent Chauvaud

**Abstract** In a rapidly changing world, maintenance of the good health of the marine environment requires a detailed understanding of its mechanisms of change, and the ability to detect early signals of a shift away from the equilibrium state that we assume characterized it before there was any significant human impact. Given that instrumental measurements of the oceans go back no further than a few decades, the only way in which we can assess the long-term baseline variability that characterizes the pre-perturbation equilibrium state of the marine environment is by the use of proxy records contained in stratified or layered natural archives such as corals, fish otoliths and bivalve mollusc shells.

In this chapter we will look at the ways in which the environmental signals recorded in the shells of bivalve molluscs can be used to shed light on marine variability both in the present and over past centuries and millennia, and specifically how they can be used to study marine climate, the marine environment and the economic and cultural history of the relationship between humans and the oceans.

The chapter is divided into two parts: section one describes the morphological, geochemical and crystallographic techniques that are used to obtain information from the shells, while section two covers the use of bivalve shells in a wide range of

---

P. G. Butler (✉)

College of Life and Environmental Sciences, University of Exeter, Penryn Campus,  
Cornwall, UK

e-mail: [p.butler@exeter.ac.uk](mailto:p.butler@exeter.ac.uk)

P. S. Freitas

Danish Shellfish Centre, Technical University of Denmark, Nykøbing M, Denmark

e-mail: [psfr@aqu.dtu.dk](mailto:psfr@aqu.dtu.dk)

M. Burchell

Department of Archaeology, Faculty of Humanities & Social Sciences, Memorial University,  
St. John's, NL, Canada

e-mail: [mburchell@mun.ca](mailto:mburchell@mun.ca)

L. Chauvaud

IUEM-UBO, UMR CNRS 6539, Technopôle Brest-Iroise, Plouzané, France

e-mail: [Laurent.Chauvaud@univ-brest.fr](mailto:Laurent.Chauvaud@univ-brest.fr)

applications, including ecosystem services, environmental monitoring, archaeology, climate reconstruction, and climate modeling.

**Abstract in Chinese** 摘要：在瞬息万变的世界中，为了维护良好的海洋环境，我们需要对其变化机制有一个详细的了解，以便能够及时获取和辨识由人为影响造成的海洋生态平衡状态改变的早期信号。近几十年来，我们评估海洋环境平衡扰动的长期基线变化的唯一途径是记录在珊瑚礁、鱼耳石和贝类贝壳内不同年代的环境变化留下的信号。在本章中，我们将着眼于研究当下和过去的数百乃至数千年中双壳贝类壳中记录的环境信号，并基于这些信号来揭示长久以来海洋的变化情况，包括如何利用这些信息来进行海洋气候研究、海洋环境研究以及人类与海洋相互作用在经济与文化方面情况。

本章分为两部分：第一部分描述如何通过形态学、地球化学和晶体学技术从贝壳中获取信息；第二部分介绍了双壳类贝壳在生态系统服务、环境监测、考古学、气候状态重构和气候模拟等研究中的应用。

**Keywords** Environmental monitoring · Mollusc · Archaeology · Marine climate · Ecosystems

**关键词** 环境监测 · 软体动物 · 考古学 · 海洋气候 · 生态系统

## 21.1 Physical and Geochemical Proxies

Everything that is known about past environmental and climatic conditions in the Earth's history prior to the appearance of historical written records and the use of instrumental measurements is based on the identification and interpretation of proxies preserved in biological or geological structures. Proxies are measurable physical or chemical properties of biogenic or abiogenic structures (e.g. shells, coral skeletons, trees, sediments, rocks) that can be interpreted as a signal of one or more environmental variables at the time during which the structures were formed. In addition, proxies enable monitoring of present day environmental conditions in locations where instrumental or historical observations are absent.

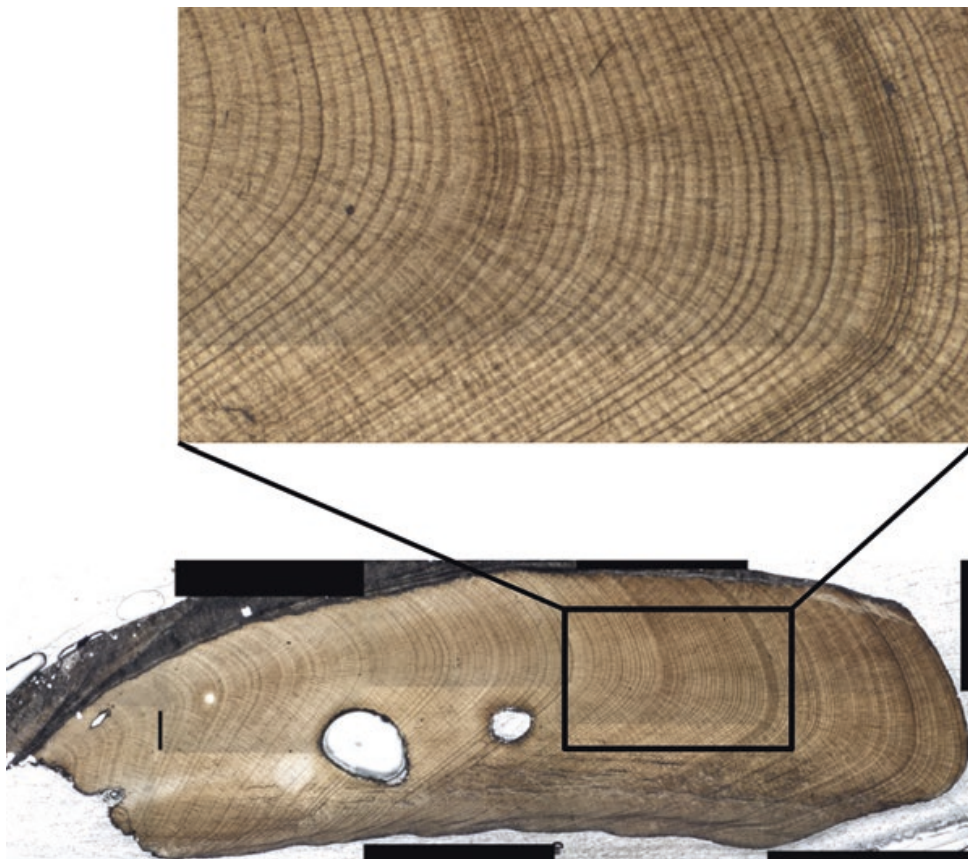
The major challenge when using bivalve shell material as a proxy archive (this is common to all proxy archives) is to establish the causal link between the wider environment in which the animal was living and the form, or configuration, with which the proxy manifests itself in the carbonate shell material. This is necessary in order to isolate the influence of the large-scale environment on the proxy from the effects of biomineralization or micro-environments. Complicating factors include vital effects, fractionation, multiple drivers in the environment, diagenesis, temporal lags, determination of the season of growth, and variable growth rates (throughout ontogeny and within each year) (Schöne 2008). While these sources of uncertainty can never be fully eliminated, they can be partially compensated through greater replication of chronologies in space (as the real environmental signal emerges from the background noise) and through mathematical modelling (Mueller et al. 2015;

Goodwin et al. 2009; De Ridder et al. 2004) or forward modeling of the processes of shell growth (Tolwinski-Ward et al. 2011).

The main proxies used in bivalve sclerochronology are: variations in periodic shell growth (usually in the form of daily, tidally or annually deposited increments); stable oxygen, carbon and nitrogen isotopes and elemental composition of the shell; and changes in the shell crystal microstructure.

### 21.1.1 Shell Growth

Shell growth reflects the complex interactions of biological clocks and physiological processes with recurrent environmental pacemakers such as light/dark cycles, tidal exposure and diurnal or seasonal temperature variations. Interruption or reduction of shell growth results in the formation of distinct lines or bands (see Fig. 21.1), which delimit periodic growth increments at a range of temporal scales from sub-daily to annually.



**Fig. 21.1** Annually-resolved growth increments imaged in the umbone (hinge) region of a specimen of *Glycymeris glycymeris*. Each increment (the wide lighter bands between the thin dark lines) consists of material laid down during the growth season (usually between 6 and 9 months). (Photo: Pedro Freitas)

While it is a challenging task to disentangle the signals of multiple environmental or climatic drivers in time-series of bivalve growth increments, growth increment series have been interpreted as a response to climate patterns in the Arctic (Ambrose et al. 2006) and north Atlantic (Reynolds et al. 2017, Swingedouw et al. 2015, Schöne et al. 2003), west African monsoon activity (Azzoug et al. 2012), sea surface temperature (Brocas et al. 2013; Reynolds et al. 2013; Black et al. 2009; Butler et al. 2010) and palaeo-productivity (Wanamaker et al. 2009; Witbaard 1996).

### 21.1.2 *Stable Isotopes*

The ability to use stable isotopes as geochemical proxies relies on the fractionation (i.e. the relative preference) between the lighter and heavier isotopes of an element during chemical reactions (e.g. carbonate precipitation or respiration) and the preservation of the resultant stable isotope ratio in the shell material. Stable isotope ratios of oxygen and carbon are commonly used in bivalve shells, while the use of stable isotope ratios of other elements (e.g. magnesium, boron, nitrogen, sulphur or strontium) is less common (e.g. Levin et al. 2015; Liu et al. 2015; Carmichael et al. 2008; Holmden and Hudson 2003), as is the use of clumped isotopes (Eagle et al. 2013).

#### 21.1.2.1 *Stable Oxygen Isotopes*

The stable oxygen isotope ratio ( $\delta^{18}\text{O}_{\text{shell}}$ ) of shell carbonate depends on both the ambient temperature and the isotopic composition of the water, the latter being influenced by precipitation-evaporation dynamics and water mass mixing, thus being correlated (in marine environments) with salinity (Carmichael et al. 2008; Epstein et al. 1953; Urey 1947). Empirical palaeotemperature equations have been developed to reconstruct temperature from  $\delta^{18}\text{O}_{\text{shell}}$  (e.g. Kim and O'Neil 1997; Grossman and Ku 1986), although these assume that  $\delta^{18}\text{O}_{\text{water}}$  is known or can be estimated. Bivalves usually precipitate their shell calcite and aragonite in or close to oxygen isotopic equilibrium (e.g. Wefer and Berger 1991) and palaeotemperature equations have been produced for several bivalve species, including *Pecten maximus* (Chauvaud et al. 2005), *Mytilus edulis* (Wanamaker et al. 2007), *Glycymeris glycymeris* (Royer et al. 2013), *Tridacna gigas* (Aharon 1983) and *Tridacna maxima* (Duprey et al. 2015). The effect of seasonally variable growth rates must be taken into account, particularly in annually resolved records, since this causes variable time averaging and bias in  $\delta^{18}\text{O}_{\text{shell}}$  records towards the season of highest growth and may inhibit the preservation of the full seasonal temperature amplitude (Schöne 2008; Goodwin et al. 2003).

### 21.1.2.2 Stable Carbon Isotopes

The stable carbon isotope composition of bivalve shell carbonate ( $\delta^{13}\text{C}_{\text{shell}}$ ) has been proposed as a proxy for  $\delta^{13}\text{C}$  of dissolved inorganic carbon ( $\delta^{13}\text{C}_{\text{DIC}}$ ), and the processes that control it: salinity, the marine  $\delta^{13}\text{C}$  Suess effect (Butler et al. 2009), and productivity and respiration (e.g. Schöne et al. 2011; Arthur et al. 1983; Killingley and Berger 1979; Mook and Vogel 1968). However, shell carbon does not originate only from DIC, but also includes a proportion of metabolic carbon with highly depleted  $\delta^{13}\text{C}$  values and it can also be affected by kinetic isotopic disequilibrium (e.g. Gillikin et al. 2007; Kennedy et al. 2001; McConnaughey et al. 1997; Klein et al. 1996; Tanaka et al. 1986). Nevertheless,  $\delta^{13}\text{C}_{\text{shell}}$  can provide valuable information on environmental conditions in species with a stable metabolic influence or where the  $\delta^{13}\text{C}_{\text{DIC}}$  signal is large enough to be preserved in  $\delta^{13}\text{C}_{\text{shell}}$  (Butler et al. 2011; Schöne et al. 2011; Khim et al. 2003).

### 21.1.2.3 Stable Isotopes in the Shell Organic Matrix

Bivalve shells contain an organic matrix comprising up to 5% of the shell material (Marin et al. 2012), which can be analysed for  $\delta^{13}\text{C}$ ,  $\delta^{15}\text{N}$  and  $\delta^{34}\text{S}$  (e.g. Carmichael et al. 2008), albeit at a lower temporal resolution than is possible for the inorganic fraction.  $\delta^{13}\text{C}$ ,  $\delta^{15}\text{N}$  and  $\delta^{34}\text{S}$  in the organic matrix depend, as with bivalve soft tissues, on the isotopic composition of food sources and on fractionations associated with metabolic processes (Vander Zanden and Rasmussen 2001), providing information on primary consumer food sources, ecosystem trophic structure (Graniero et al. 2016; Ellis et al. 2014; Dreier et al. 2012; Versteegh et al. 2011; Mae et al. 2007; O'Donnell et al. 2003, 2007), and anthropogenic nitrogen inputs (Black et al. 2017; Kovacs et al. 2010; Watanabe et al. 2009; Carmichael et al. 2008).

## 21.1.3 Elemental Composition of Shell Carbonates

The elemental composition of bivalve shells (expressed as normalized E/Ca ratios) has – at least in theory – potential for palaeoceanographic reconstruction and environmental monitoring, this being related to the control of element incorporation by environmental variables such as temperature, or ambient element concentration. However, the complexities of bivalve shell biomineralization lead to strong physiological and kinetic effects related to metabolism, growth rates, ontogenetic age, shell mineralogy, crystal structure and the organic matrix (e.g. Freitas et al. 2008, 2009, 2016; Shirai et al. 2014; Lazareth et al. 2013; Schöne et al. 2013; Carré et al. 2006; Klein et al. 1996; Lorens and Bender 1977). Minor and trace elements can be incorporated in shell carbonate by various processes, including substitution of calcium in the carbonate crystal lattice (Soldati et al. 2016; Lingard et al. 1992); differential adsorption to heterogeneous crystal surfaces (Schöne et al. 2013); binding



to organics (Takesue et al. 2008); and co-precipitation as separate mineral phases (Fritz et al. 1990). As a result, the effective use of bivalve shell E/Ca ratios as environmental proxies has been limited, often to species-specific applications or applications restricted to particular environmental settings (e.g. Bougeois et al. 2014; Elliot et al. 2009).

#### **21.1.4 Microstructure**

While shell microstructure has commonly been used in phylogenetic studies, only more recently has it been found that crystal fabrics at the micrometre scale might preserve information on environmental conditions at the time of shell formation: these include pH in *Mytilus edulis* shells (Milano et al. 2016; Hahn et al. 2014) and temperature in *Trachycardium procerum* (Perez-Huerta et al. 2013) and *Cerastoderma edule* shells (Milano et al. 2017; Nishida et al. 2012).

### **21.2 Goods and Services of Bivalve Sclerochronology**

#### **21.2.1 Ecosystem Services**

##### **21.2.1.1 Introduction**

The marine system has been estimated to supply about two-thirds of all ecosystem services provided by the natural environment (Gesamp 2001). These include, but are not limited to, fisheries, aquaculture, carbon sequestration, water quality, energy production, aggregate extraction and biodiversity. However, the present day marine system is challenged by the combined impact of climate change and industrial scale fisheries, and the definition of a “natural” baseline ecosystem or any kind of ecosystem equilibrium is problematic and challenging. While regime shifts in response to natural climate variability undoubtedly occurred before the industrial era (Hare and Mantua 2000; Minobe 1997), these did not take place in the context of steep trends in ocean temperature, ocean  $p\text{CO}_2$  and selective harvesting of key species (Rocha et al. 2015). To maintain ecosystem resilience under such conditions is a challenging task for ocean management, and a key part of the process will be to assess the degree of ecosystem variability that characterizes a resilient system (Steinhardt et al. 2016; Willis et al. 2010). It is this degree of variability that can be assessed with the help of biochronologies drawn from multiple sources (eg bivalve molluscs, fish otoliths, corals).

The term “ecosystem variability” in this context includes population dynamics of single species, predator-prey relationships, trophic chains and host-pathogen relationships. Indicators of ecosystem variability that can be identified in bivalve shell archives include growth rate, population dynamics, environmental DNA and stable

isotope ratios (see Sects. 21.2.1.1, 21.2.1.2, 21.2.1.3 and 21.2.1.4 below). Although these are inherently limited as ecosystem proxies, being based on single species, their usefulness can be substantially enhanced by comparing them directly with other precisely dated archives, such as tree rings, corals, coralline algae and fish otoliths (e.g. Black 2009; Black et al. 2009) or by characterizing bivalve growth patterns using mixed effects models (Mazloumi et al. 2017; Morrongiello et al. 2012). In this way it is possible to develop detailed timelines of ecosystem variability, including leads and lags at annual and seasonal resolutions between different ecosystems and different parts of the same ecosystem.

With the use of modern statistical techniques such as principal components analysis and mixed effects models to isolate the causes and effects of interacting environmental drivers on multiple proxy archives, it is now possible to reconstruct ecosystem dynamics over many centuries. Long chronologies can be used in tandem with shorter archival records and instrumental data (Black et al. 2014), so that the dynamics of ecosystem regime shifts can be modeled and extended back in time with the application of mixed effects models (Morrongiello and Thresher 2015) to the long proxy archive. The use of networks of bivalve chronologies can add a spatial element to the extended archive (Reynolds et al. 2017).

### 21.2.1.2 Bivalve Growth Rates

To a first approximation, variability in bivalve growth rates can be assumed to be a response to variations in food supply to the benthos (Witbaard 1996). However, this apparently straightforward assumption is complicated by predator-prey relationships in the upper part of the water column, so that food supply to the bottom-dwelling bivalves can sometimes be anticorrelated with primary production at the surface (Witbaard et al. 2003). A further level of complexity is introduced by the position of the bivalve population above or below the seasonal thermocline, so that more complex ecosystem variability in shallow surface waters appears to result in rather low growth synchrony between animals in the same population (Marali and Schöne 2015), or the reversal of the correlation between growth and seawater temperature (compare Mette et al. 2016, with Brocas et al. 2013, and Butler et al. 2010). Bivalve growth rates therefore seem to reflect an emergent outcome of a complex web of ecosystem relationships in the overlying water column. This complexity can be deconvolved using multivariate analysis techniques such as multiple linear regression (Mette et al. 2016), Bayesian hierarchical modeling (Helser et al. 2012), principle component analysis (Tao et al. 2015), or mixed effects models (Izzo et al. 2017).

### 21.2.1.3 Population Dynamics of Bivalve Fisheries

The use of long absolutely-dated chronologies adds enormous value to studies of population dynamics and the management of commercial bivalve fisheries (Ridgway et al. 2012; Harding et al. 2008; Kilada et al. 2007). The ability to determine precise dates of settlement over long time frames enables changes of population structure over time to be determined. These changes can be related to information about climate, regime shifts, hydrography and predator-prey relationships, allowing aspects of the underlying ecosystem variability to be inferred (Ridgway et al. 2012; Witbaard and Bergman 2003; Witbaard et al. 1997).

### 21.2.1.4 Environmental DNA

A number of recent studies have shown that ancient DNA (aDNA) can be recovered from fossil material (e.g. Pruefer et al. 2014; Orlando et al. 2013), raising the possibility that changes in environmental DNA over time could be reconstructed by extracting aDNA from precisely dated fossil shell material. Snippets of aDNA recovered from the organic fraction of the shell matrix may characterize not only the genome of the bivalve itself, but also other species in the environment (from both inside and outside the shell). Metagenomic analysis of modern and fossil shells (Der Sarkassian et al. 2017) has shown that the shell biominerals (depending on their condition) may contain a range of microbial DNA from the marine environment, as well as the DNA of the host organism itself and its pathogens. This work indicates that there is potential to use environmental DNA and ancient DNA in shells to monitor the evolutionary history of bivalve species, their associated microbial communities and their relationship with pathogens.

### 21.2.1.5 Stable Isotope Ratios

The position of an animal in the surrounding food web is a useful indicator of predator-prey interactions or trophic chains, and one that can be approached through the analysis of stable isotope ratios of carbon and nitrogen in the organic fraction of the shell (e.g. Gillikin et al. 2017). Stable isotopes can also indicate disruption of the ecosystem as a result of anthropogenic inputs such as agricultural runoff or wastewater input (Versteegh et al. 2011). For more information on the use of stable isotopes in the shell organic matrix, see Sect. 21.1.2.3.



## 21.2.2 *Environmental Services*

### 21.2.2.1 Introduction

Reliable monitoring of past and present environmental conditions is essential if we are to accurately assess the impacts of anthropogenic and natural changes on the marine environment. Bivalve shells can provide a tool for present and retrospective monitoring, establishing pre-impact environmental baselines, and allowing the reconstruction of marine and freshwater environments that range from estuaries to the deep-sea (e.g. Schöne and Krause 2016; Steinhardt et al. 2016; Fortunato 2014; Richardson 2001; Jones 1983). While the soft tissues of bivalves are commonly used in monitoring projects such as the well-known Mussel Watch program (Schöne and Krause 2016), the use of bivalve shells presents several distinct advantages: (1) shells are usually not affected by post-deposition alterations, while soft tissue decomposes rapidly; (2) there is potential to obtain both high-resolution (circa-daily to annual) records with accurately-dated banded shell material, and lower resolution time-averaged records from whole shells or fractions of shells; (3) temporal snapshots can be obtained from individual specimens; (4) where the bivalves are sufficiently long-lived, the proxy record can be extended into the past beyond the lifetime of single individuals through replicated cross-matched chronologies (see Sect. 21.2.4.1.); (5) shells can provide proxy records for times and locations where instrumental networks and records are absent. However, the use of shells for environmental monitoring and reconstruction is still limited, due to analytical limitations (e.g. stable isotopes in the organic matrix), unknown pathways of incorporation into the shell (e.g. hydrocarbons and other organic pollutants), significant inter-shell variation, or the complex control of most proxies by multiple environmental and biological variables. Consequently, most studies of bivalve shell environmental proxies have focused on the evaluation and validation of environmental and physiological controls for individual species at specific sites. Nevertheless, with the added value provided by crossdating and replication, bivalve shells can provide baseline monitoring and reconstruction services for a range of environmental characteristics (see Schöne and Krause 2016 and Steinhardt et al. 2016 for recent reviews), including contamination events, temperature, salinity and river discharge.

### 21.2.2.2 Pollution Events

Minor and trace elements, due to their role in biogeochemical processes and their potentially hazardous impact on the environment, have been of particular interest in studies of the capacity of bivalve shells to record natural and anthropogenic changes in ambient chemistry, including pollution events. Most studies have compared whole shells or fractions of shells from contaminated and non-contaminated sites (see Schöne and Krause 2016 for a recent review). Elevated levels of metals (e.g. Mn, Fe, Cu, Zn, Cd, Pb and U) in the shells of several species (e.g. *Arctica*

*islandica*, *Crassostrea gigas*, *Crassostrea virginica*, *Ensis siliqua*, *Modiolus modiolus*, *Mercenaria mercenaria*, *Mya arenaria*, *Mya truncata*, *Mytilus edulis*, *Mytilus californianus*, *Mytilus galloprovincialis*, *Perna perna*, *Perna viridis* and *Pinctada imbricata*.) have been interpreted as an indication of elevated metal levels in the ambient seawater or sediment (Cariou et al. 2017; Holland et al. 2014; Krause-Nehring et al. 2012; Dunca et al. 2009; Klunder et al. 2008; Protasowicki et al. 2008; Bellotto and Miekeley 2007; Macfarlane et al. 2006; Pearce and Mann 2006; Gillikin et al. 2005a; Liehr et al. 2005; Nicholson and Szefer 2003; Yap et al. 2003; Richardson 2001; Almeida et al. 1998; Puente et al. 1996; Raith et al. 1996; Pitts and Wallace 1994; Fuge et al. 1993; Bourgoin 1990; Koide et al. 1982; Bourgoin and Risk 1987; Chow et al. 1976). However, most of this research is based on snapshots in time, and it rarely involves the use of a truly sclerochronological approach to produce time-series of metal levels in shells (e.g. Vander Putten et al. 2000; Price and Pearce 1997; Carriker et al. 1980). Recent studies have produced decadal to centennial records of environmental heavy metal variability using long-lived species, such as Pb and Fe in *Arctica islandica* (Holland et al. 2014; Krause-Nehring et al. 2012) or Pb in *Mercenaria mercenaria* (Gillikin et al. 2005b). Metal levels in the shells of freshwater bivalves (e.g. Mn, Co, Ni, Cu, Zn, Cd, and Pb) have also been demonstrated to record contamination from industrial or mining activities (Markich et al. 2002; Schettler and Pearce 1996; Anderson 1977) or even, using Na shell content, contamination from road-salt (O'Neil and Gillikin 2014). Elemental proxies have also been proposed as archives of changes in pelagic primary production, e.g. Mo/Ca (Barats et al. 2010; Thébault et al. 2009a), Ba/Ca (Barats et al. 2009) or Li/Ca (Thébault and Chauvaud 2013; Thébault et al. 2009b). However, in general, trace element ratios to calcium (Mg/Ca, Sr/Ca, Li/Ca, Mn/Ca and Ba/Ca) are more difficult to interpret in bivalves and seem to be very sensitive to vital effects, especially growth rate (Carré et al. 2006; Gillikin et al. 2005c; Takesue and Van Geen 2004). In addition to minor and trace elements, other proxies in bivalve shells have been used to record anthropogenic contamination. For instance, the  $\delta^{15}\text{N}$  composition of the shell organic matrix can provide information on nitrogen anthropogenic wastewater inputs to estuarine ecosystems (e.g. Gillikin et al. 2017; Kovacs et al. 2010; Watanabe et al. 2009; Carmichael et al. 2008).

### 21.2.2.3 Temperature, Salinity and the Stable Oxygen Isotope Proxy

Bivalve  $\delta^{18}\text{O}_{\text{shell}}$  values obtained at daily, annual or decadal resolutions reflect a wide range of habitats and species from deep-sea oysters *Neopycnodonte zibrowii* (Wisshak et al. 2009) to coastal (or estuarine) and freshwater bivalves, such as mussels (e.g. *Unionidae* (Dettman et al. 1999), *Mytilus trossulus* (Klein et al. 1996), *Pinna nobilis* (Kennedy et al. 2001), scallops (*Pecten maximus* – Chauvaud et al. 2005) and oysters (*Crassostrea gigas* – Ullmann et al. 2010); the geographical spread ranges from tropical (e.g. *Tridacna gigas* (Elliot et al. 2009), *Hippopus hippopus* (Aubert et al. 2009), *Comptopallium radula* (Thébault et al. 2007)) and temperate waters (e.g. *Glycymeris glycymeris* – Royer et al. 2013) to sub-polar (e.g.

*Arctica islandica* – Schöne et al. 2004, Marsh et al. 1999) and polar waters (Carroll et al. 2009; Tada et al. 2006; Simstich et al. 2005)(e.g. *Astarte borealis* (Simstich et al. 2005) *Laternula elliptica* (Tada et al. 2006), *Serripes groenlandicus* (Carroll et al. 2009)). They also perform an important analytical function, since diurnal or seasonal variation in  $\delta^{18}\text{O}_{\text{shell}}$  effectively validates the periodicity of the growth patterns (e.g. Schöne and Giere 2005; Goodwin et al. 2001; Brey and Mackensen 1997; Jones and Quitmyer 1996; Witbaard et al. 1994; Krantz et al. 1984).

However, the most powerful application of  $\delta^{18}\text{O}_{\text{shell}}$  has been to provide information about the oceanographic and climatic processes that control seawater temperature and salinity. For instance, bivalve  $\delta^{18}\text{O}_{\text{shell}}$  has been used to determine changes in: seasonality (e.g. Beierlein et al. 2015; Wanamaker et al. 2011; Schöne and Fiebig 2009; Schöne et al. 2005b); ocean circulation and atmospheric forcing dynamics (e.g. Reynolds et al. 2017; Wanamaker et al. 2008); shelf and coastal seas hydrography, reflecting changes in circulation (e.g. Torres et al. 2011), river discharge (e.g. Muller-Lupp and Bauch 2005; Simstich et al. 2005; Dettman et al. 2004; Schöne et al. 2003; Surge et al. 2003; Khim et al. 2003; Mueller-Lupp et al. 2003; Ekwurzel et al. 2001) or glacial ice-melt runoff (e.g. Versteegh et al. 2012; Tada et al. 2006; Ekwurzel et al. 2001; Azetsu-Scott and Tan 1997); ENSO variability (e.g. Welsh et al. 2011; Carré et al. 2005); West African Monsoon variability (e.g. Azzoug et al. 2012); and coastal upwelling (e.g. Jolivet et al. 2015). However, within-shell trends in isotopic amplitudes and averages may also reflect decreases in growth rate rather than environmental fluctuations. Therefore, particular care should be taken when interpreting inter-annual isotope profiles from long-lived species (Goodwin et al. 2003).

In addition to  $\delta^{18}\text{O}_{\text{shell}}$ , other proxies have been proposed to record changes in salinity and river discharge of coastal and estuarine waters, e.g. Sr isotopes (Widerlund and Andersson 2006) and Ba/Ca ratios (Poulain et al. 2015; Carroll et al. 2009; Gillikin et al. 2006, 2008).

### 21.2.3 Cultural Services

#### 21.2.3.1 Introduction

Human interactions with the intertidal zone, including shellfish collection and in particular harvesting of bivalves have been part of human, and some non-human, cultures for over a hundred thousand years. Bivalve shells have become an increasingly valuable resource for archaeological studies of food habits, patterns of seasonal site occupation, migration, tool use, ornamentation, and the dating of archaeological sites (Thomas 2015a, b; Andrus 2011; Andrus and Crowe 2000; Claassen 1998). Interdisciplinary approaches, combining archaeology, biology and geochemistry have significantly contributed to increased understanding and interpretations of the long-term contributions of bivalves to human culture. The

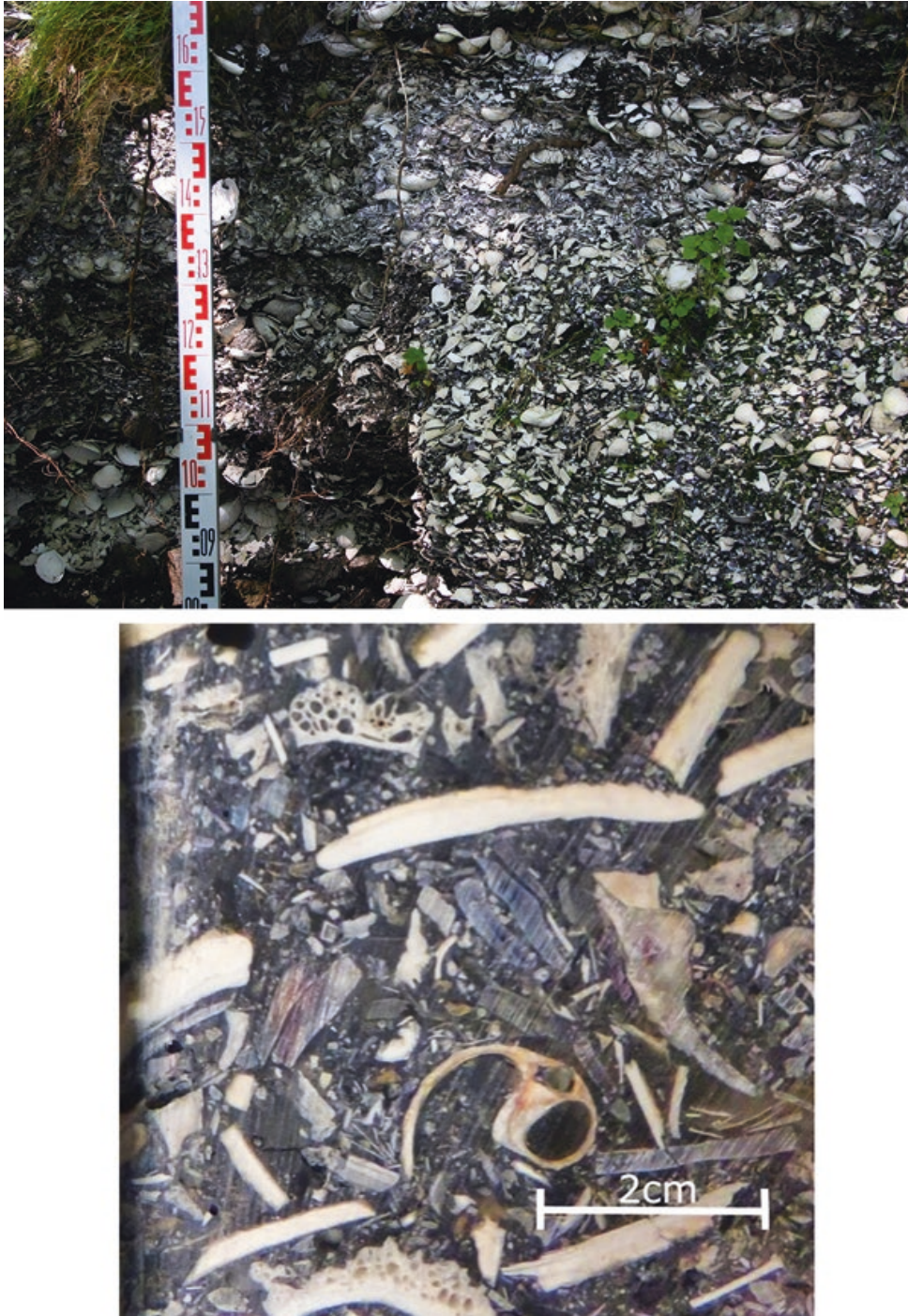
application of bivalve sclerochronology in archaeology is expanding the range of questions archaeologists can ask about past human-environmental interactions.

The earliest evidence of the intentional gathering of bivalves by humans is found at Terra Amata, France (Claassen 1998; Stein 1992). Bivalves were used as a staple and supplementary food source, and empty shells were used for tools and ornamentation by humans and even by our non-human ancestors (Duncan and Ghys 2019). Some of the earliest evidence for understanding human cognition and symbolism comes from the preservation of shell artefacts. Individuals were crafting marine shells into beads to be worn as ornamentation in Israel and Algeria 75,000 years ago (Vanhaeren et al. 2006), and as far back as 82,000 years ago, shell beads decorated with red ochre were left behind in human occupied caves in North Africa (Bouzougar et al. 2007). Our extinct cousins, the Neanderthals, crafted adornments from the shells of the marine bivalves *Pecten*, *Glycymeris*, *Spondylus* and *Acanthocardia* at Cueva de los Avouines, Iberia, in the Middle Palaeolithic 50,000 years ago (Zilhao et al. 2010). Freshwater shells first appear in the archaeological record in southern Egypt 24,000 years ago. In hunter-fisher-gatherer societies, both past and present, shell tools are used as part of everyday tasks and shells have been valued as ornamentation and symbolic objects; in many early communities, thousands of shell disc beads were used to adorn the dead to prepare them for the afterlife and commemorate their status within society; for example, burials dating between 4000–3500 Cal. BP from the Salish Sea in British Columbia in Canada contain individuals who were buried with up to 350,000 individual stone and shell beads (Coupland et al. 2017).

### 21.2.3.2 Shell Middens

The most abundant bivalve remains in the archaeological record appear in the context of shell middens and shell mounds (Roksandic et al. 2014) (Fig. 21.2). Cumulative everyday acts of bivalve collection over decades, centuries or millennia resulted in the formation of shell middens that can be found along almost all of the world's coastlines. Shell middens are deposits that consist primarily of shell, although their micro-constituents can vary with site formation, duration of occupation, population size and purpose (Alvarez et al. 2011; Claassen 1998; Stein 1992). The size and shape vary, from small mounds of finely crushed shells, to extended mounds stretching over tens of kilometres of coastline and over 10 m in height (or depth). For example, modern-day shell middens, and archaeological shell middens from the Saloum Deltal in Senegal are over 15 m in height (Hardy et al. 2016). Shell middens are frequently regarded as homogenous 'garbage heaps' that can represent periods of shell acquisition and disposal that range from a few days of intensive harvesting to continuous harvesting over millennia. In other contexts, they can take the form of monumental architecture, such as those in the south-eastern United States, specifically the shell rings in Georgia and South Carolina (Marquardt 2010; Thompson and Andrus 2011). Our understanding of variability in the nature and extent of shell middens and mounds has been enriched by work on notable shell





**Fig. 21.2** (top) Shell midden excavation in progress from the Salish Sea, southern British Columbia. (Photo: Terence Clark); (bottom) Intact sediment block from a shell midden embedded with fiberglass resin, north Calvert Island, British Columbia, Canada. (Photo: Meghan Burchell)



midden regions including the Jomon middens of Japan (e.g. Habu et al. 2011), Sambaquis of Brazil (Okumara and Eggers 2014), the Pacific Northwest Coast (Moss 2011), as well as the kitchen middens (“*køkkenmøddinger*”) on the coasts of Scandinavia (Anderson 2008), to name just a few studies among many.

### 21.2.3.3 Bivalves as a Food Source

Contemporary studies of indigenous populations attest to the importance of shellfish, particularly bivalves, as a food source, especially on the coasts of Australia, Chile, Papua New Guinea, Mozambique and South Africa (Bird and Bird 1997; Kyle et al. 1997), and demonstrate that bivalve gathering is not always a random activity, but is often governed by social and environmental circumstance. Bivalves in cultural contexts go beyond being simply a food source – their shape, colours, and sounds have influenced human cultural activities for millennia, and shells still hold a prominent place in many origin myths and rituals within indigenous societies today. Through the analysis of bivalves in various contexts, interpretations about long-term human environmental interactions and human interaction with the supernatural world can be interpreted.

Collection of oysters and limpets is first recorded at the open-air site of Terra Amata in France, and further evidence suggest gathering of bivalves began elsewhere in Europe as long ago as 450,000 years (Bailey and Milner 2008). The intensification of gathering of bivalves and other marine molluscs as a food source has been observed at approximately 9000 years ago at Cantabria, northern Spain (Waselkov 1987); overall, the increased visibility of bivalve collection has been associated with human population growth, economic intensification, and changes in sea level (Bailey and Craighead 2003).

Bivalves and other intertidal resources have, for the most part, been considered an insignificant, or ‘fall back’ resource at coastal sites, especially when compared to other food sources such as fish or marine and terrestrial mammals (Eerkens et al. 2016; Erlandson 2001). In previous archaeological studies, the presence of bivalves has often been little more than acknowledged (Fitzhugh 1995); however, as new methods emerge for studying the season and intensity of gathering, archaeologists are becoming better able to understand the role of bivalves in coastal economies of the past, especially regarding seasonal patterns of resource acquisition and by proxy, site occupation.

### 21.2.3.4 Bivalve Sclerochronology and Seasonality of Human Occupation

Seasonality plays a critical role in hunter-fisher-gatherer societies, particularly in temperate locations, since it influences the availability of food resources and structures the organization of activities and the timing of events. Seasonal changes are therefore integrated into all social, economic and settlement activities. Seasonal subsistence practices are scheduled to optimize the acquisition of resources that

vary in quantity, availability and abundance. The importance of seasonality also varies by location and is enhanced in areas with a 'hungry season', where food resources need to be stored to ensure a supply throughout the year (De Garine and Harrison 1988). Bivalves have been identified as a seasonally critical food source and a required source of carbohydrates and proteins during 'lean seasons'. In response to seasonal changes, hunter-gatherers can practice resource management, including season-specific bivalve harvesting (Smith and Wishnie 2000) and drying and storage of their meat (Henshilwood et al. 1994). Using stable oxygen isotope analysis of shell carbonate, archaeologists are able to identify the season, or seasons of bivalve collection (Jew et al. 2013; Hallmann et al. 2009; Deith 1986; Killingley 1981; Shackleton 1973) and interpret long- and short-term settlement patterns (Prendergast and Schöne 2017; Burchell et al. 2013). Seasonality can also be determined through the analysis of sub-annual and annual growth patterns by measuring the distance between seasonally deposited lines (Carré et al. 2009; Milner 2001; Lightfoot et al. 1993). However, the methods used to identify seasonality are contingent on species, shell growth and locality. Some bivalves produce multiple 'annual lines' in their shells, and with these species, seasonality can only be resolved with high-resolution stable oxygen isotope analysis. This has been a critical advance in understanding how hunter-fisher-gatherers co-ordinated movements between sites and developed permanently settled villages. For example, by combining season-of-harvest determined from stable oxygen isotope analysis of the bivalve *Saxidomus gigantea* with sclerochronology, radiocarbon dating and ancillary lines of archaeological evidence, year-round occupation of the village site at Namu for at least 4500 years has been confirmed (Burchell et al. 2013; Cannon and Burchell 2017), predating previous ideas about when hunter-fisher-gatherers established permanent villages on the Pacific Northwest Coast of North America.

#### 21.2.3.5 Bivalve Sclerochronology and Accurate Radiocarbon Dating

The marine radiocarbon reservoir effect (i.e. the uncertainty in radiocarbon dating of marine samples because the measured radiocarbon has spent an unknown period in the marine system before being taken up into the sample) is a longstanding challenge for archaeology in coastal sites, that can be usefully approached using bivalve sclerochronology. If the regional marine reservoir can be independently determined by radiocarbon analysis of an absolutely dated bivalve chronology (Wanamaker et al. 2012; Butler et al. 2009), a more accurate radiocarbon calibration can be applied to midden shells from the same region. Conversely, if there is an independent assessment of the date of occupation, radiocarbon dating of midden shells can be used to determine the regional marine reservoir (Ascough et al. 2006). It is also possible to further constrain radiocarbon dating of coastal sites by the construction of crossmatched floating chronologies using shells found at different levels in middens (Helama and Hood 2011).

## 21.2.4 Climate Services

### 21.2.4.1 Introduction

The key characteristics that make this archive so powerful are: (a) that the animals deposit periodic (daily, fortnightly or annual) well-defined increments in the shell; (b) that growth is synchronous within populations; (c) that individuals of certain species can live for hundreds of years (*Arctica islandica* (Butler et al. 2013, Schöne et al. 2005a) and *Glycymeris glycymeris* (Reynolds et al. 2013)); (d) that most species precipitate calcium carbonate in isotopic equilibrium with seawater; (e) that natural or anthropogenic deposits of bivalve shells are widespread and are found at all latitudes. Synchronous growth patterns provide *prima facie* evidence that the shells are recording a common environmental signal, while annual banding allows the precise calendar year of each band to be determined (as long as the year of the most recent band is known). In addition, where species have extended lifespans, the years of fossil shells can be precisely determined by comparing their banding patterns with those from live collected shells. In this way, crossdated and replicated timelines (chronologies) of shell material can be built that go back much further in time than the lifetimes of any live collected shell. For example, specimens of *A. islandica* off the north coast of Iceland regularly live for more than 300 years (Schöne et al. 2005a), and one specimen collected there in 2006 is (at 507 years; Fig. 21.3) the longest-lived non colonial animal known to science whose age can be precisely determined (Butler et al. 2013).

While the multicentennial length of long chronologies adds value to proxy-based reconstructions derived from them, these are only available for certain regions (in particular the temperate and boreal North Atlantic Ocean). In low latitudes, bivalves with much shorter lifespans can be used to reconstruct paleoclimate, albeit in shorter and less precisely dated windows. These include studies of seasonality in the Eocene in central Asia (Bougeois et al. 2014) and in the Miocene in the Amazon (Kaandorp et al. 2005; Vonhof et al. 1998), ENSO variability in the eastern (Carré et al. 2014) and western (Driscoll et al. 2014) tropical Pacific, and Holocene climate variability in the southwest Pacific (Duprey et al. 2012, 2014).

### 21.2.4.2 The Use of Proxy Archives in Climate Modelling

With the atmospheric concentration of CO<sub>2</sub> passing the 400 ppm threshold in 2016 and unlikely to fall back below it for the foreseeable future (Betts et al. 2016) and emissions continuing to increase at a rate equivalent to business as usual (Boden et al. 2015), the need for climate scientists to generate useful projections to inform mitigation and adaptation policy is more acute than ever. Impacts of climate change on the marine system include species range shifts, loss of ecosystems and biodiversity and impacts on coastal livelihoods (IPCC 2014). Accurate projections of regional change in the short to medium term (which are of most interest to policy-makers) require sufficiently high resolution in climate models, and this in turn



**Fig. 21.3** Shell valves of a 507-year old specimen of *Arctica islandica* collected near Grimsey island, north of Iceland in 2006, with processing notes. (Photo: Bangor University)

depends on access to similarly high resolution instrumental and proxy data for assimilation (Fang and Li 2016; Phipps et al. 2013). Suitable methods are already being used for modeling of terrestrial systems using proxies from tree-rings (Breitenmoser et al. 2014; Loader et al. 2013) and speleothems (Baker et al. 2012) and for tropical marine systems using proxies from corals (Evans et al. 1998), and more recently it has been demonstrated that reconstructions of marine climate using bivalve shells can provide high resolution real world data for the temperate and boreal oceans that can be used to test and constrain coupled climate models (Pyrina et al. 2017; Emile-Geay et al. 2016; Swingedouw et al. 2015).

#### 21.2.4.3 Marine Climate of the North Atlantic Ocean

*Arctica islandica* is a particularly important proxy in this respect because of its distribution in the shelf seas surrounding the North Atlantic Ocean (Schöne 2013; Dahlgren et al. 2000). The North Atlantic is a highly sensitive sentinel of change in the climate system. Heat is transferred from the tropical to the boreal latitudes in the Gulf Stream/North Atlantic Current system. As the water gives up its heat by evaporation at high latitudes in the Labrador and Nordic Seas it becomes dense and sinks, a mechanism (the Atlantic Meridional Overturning Circulation (AMOC)) that plays an important part in driving the global ocean circulation system. Model experiments



indicate that the AMOC will weaken during the twenty-first century (Liu et al. 2017; Weaver et al. 2012), and there are some indications that this is already happening (Rahmstorf et al. 2015).

Recent research using the 1357-year *A. islandica* time series for the North Icelandic Shelf (NIS) (Butler et al. 2013) illustrate some of the climate services that can be obtained from this proxy. By measuring the radiocarbon age of shell material that has been independently dated using sclerochronology, it is possible to determine the radiocarbon age of the water mass in which the shell was deposited (i.e. the length of time since the water was last ventilated at the ocean surface). In the case of the NIS, this has enabled researchers to map changes in the relative strength of water masses with Arctic and Atlantic origins and gain a unique insight into the mechanisms driving the marine system in the North Atlantic (including the AMOC) during the past millennium (Wanamaker et al. 2012).

The NIS *A. islandica* series has also been used to validate models of the response of the ocean to large volcanic eruptions. For example, the modeled effect of a particular class of large tropical eruption on bidecadal North Atlantic Ocean circulation variability appears to be mirrored in growth variations in *A. islandica* from the NIS (Swingedouw et al. 2015).

Most recently, the first 1000-year annually-resolved stable oxygen isotope ( $\delta^{18}\text{O}$ ) series for the marine environment has been obtained by sampling carbonate from individual increments in shells used in the NIS *A. islandica* chronology (Reynolds et al. 2017). By comparing the shell record with tree ring records, the researchers demonstrated a significant change in the lead-lag relationship between the marine and atmospheric systems. Before the industrial period (AD 1000–1800), changes in the marine system (forced by solar and volcanic variability and internal dynamics of ocean circulation) led changes in Northern hemisphere surface air temperatures (SATs), whereas after ~1800 the relationship was reversed, with changes in SATs leading changes in marine variability. This suggests that the climate effect of rapid increases in atmospheric greenhouse gases has masked the effects of natural external forcing and internal variability.

#### 21.2.4.4 History of Carbon Cycling

The ocean currently acts as a buffer against rapidly increasing concentrations of  $\text{CO}_2$  in the atmosphere, taking up between 26% and 34% of the net anthropogenic emissions (Sabine et al. 2004). Because  $\text{CO}_2$  derived from fossil fuels is depleted in the heavy isotope  $^{13}\text{C}$ , measurement of the stable carbon isotope ratio ( $\delta^{13}\text{C}$ ) in dated marine shells from different parts of the ocean can be used to determine spatio-temporal variability in the activity of the ocean as a sink for atmospheric  $\text{CO}_2$ . The temporal trend in atmospheric  $\delta^{13}\text{C}$  ( $^{13}\text{C}$  Suess effect (Francey et al. 1999)) is an indicator of the increasing presence in the atmosphere of  $\text{CO}_2$  derived from fossil fuels. The coeval trend in oceanic dissolved inorganic carbon ( $\delta^{13}\text{C}_{\text{DIC}}$ ), which can be determined from time series of  $\delta^{13}\text{C}$  measured in absolutely dated bivalve shell material (Schöne et al. 2011; Butler et al. 2009), varies according to water depth and



the age of the local water mass, and indicates the spatial distribution of the rate at which the ocean has been acting as a sink for excess atmospheric CO<sub>2</sub>.

In addition, radiocarbon in the shell can be used in water mass detection, since the age of the ambient water can be determined by measuring radiocarbon in shells of known age (Scourse et al. 2012; Wanamaker et al. 2012; Fontugne et al. 2004; Ingram and Southon 1996; Southon et al. 1995), and is also related to sea-air CO<sub>2</sub> exchange (Carré et al. 2016).

### 21.3 Conclusion

During their lifetimes, bivalve molluscs deposit carbonate material to form their shells. This material constitutes a physical archive, which may be time-delimited (usually with daily, tidal or annual periodicity) by well-defined banding patterns in the shells. This archive contains multiple morphological, structural and geochemical records which can be related to the environment in which the shell material was deposited, and which can be analysed as well-ordered and periodically-constrained time series by reference to the banding patterns. The ubiquity and durability of the shells enhances the power of the archives, so that the records contained within them can be used as environmental proxies for a wide range (both in space and in time) of marine and coastal settings.

In this paper, we have described and assessed some of the most notable proven applications of bivalve sclerochronology in ecosystem, environmental, cultural, and climate services. However, it has been necessary to address a vast amount of research in a limited number of words, and the examples described here do not by any means constitute an exhaustive selection. With analytical techniques continually being refined and updated, and new ones being developed (e.g. clumped isotopes and Raman spectroscopy), there is very significant potential in the coming decades for new applications and improved reliability of existing applications. For as long as human society values the environment within which it is constrained to exist, it will find useful tools in the insights into past environments provided by the shells of animals that actually lived in those settings.

**Acknowledgements** We are grateful to two referees for valuable comments on the manuscript.

### References

- Aharon P (1983) 140,000-Yr isotope climatic record from raised coral reefs in New Guinea. *Nature* 304:720–723
- Almeida MJ, Moura G, Pinheiro T, Machado J, Coimbra J (1998) Modifications in *Crassostrea gigas* shell composition exposed to high concentrations of lead. *Aquat Toxicol* 40:323–334
- Alvarez M, Briz Godino I, Balbo A, Madella M (2011) Shell middens as archives of past environments, human dispersal and specialized resource management. *Quat Int* 239:1–7

- Ambrose WG Jr, Carroll ML, Greenacre M, Thorrold SR, McMahon KW (2006) Variation in *Serripes groenlandicus* (Bivalvia) growth in a Norwegian high-Arctic fjord: evidence for local- and large-scale climatic forcing. *Glob Chang Biol* 12:1595–1607
- Anderson RV (1977) Concentration of cadmium, copper, lead, and zinc in 6 species of freshwater clams. *Bull Environ Contam Toxicol* 18:492–496
- Anderson S (2008) Shell middens (“køkkenmøddinger”): the Danish evidence. In: Antczak A, Cipriani R (eds) *Early human impacts on megamollusks* (British Archaeological Series). Archaeopress, Oxford
- Andrus CFT (2011) Shell midden sclerochronology. *Quat Sci Rev* 30:2892–2905
- Andrus CFT, Crowe DE (2000) Geochemical analysis of *Crassostrea virginica* as a method to determine season of capture. *J Archaeol Sci* 27:33–42
- Arthur MA, Williams DF, Jones DS (1983) Seasonal temperature-salinity changes and thermocline development in the mid-Atlantic bight as recorded by the isotopic composition of bivalves. *Geology* 11:655–659
- Ascough PL, Cook GT, Church MJ, Dugmore AJ, Arge SV, MCGovern TH (2006) Variability in North Atlantic marine radiocarbon reservoir effects at c. AD 1000. *The Holocene* 16:131–136
- Aubert A, Lazareth CE, Cabioch G, Boucher H, Yamada T, Iryu Y, Farman R (2009) The tropical giant clam *Hippopus hippopus* shell, a new archive of environmental conditions as revealed by sclerochronological and  $\delta^{18}\text{O}$  profiles. *Coral Reefs* 28:989–998
- Azetsu-Scott K, Tan FC (1997) Oxygen isotope studies from Iceland to an East Greenland Fjord: behaviour of glacial meltwater plume. *Mar Chem* 56:239–251
- Azzoug M, Carré M, Schauer AJ (2012) Reconstructing the duration of the West African Monsoon season from growth patterns and isotopic signals of shells of *Anadara senilis* (Saloum Delta, Senegal). *Palaeogeogr Palaeoclimatol Palaeoecol* 346:145–152
- Bailey GN, Craighead AS (2003) Late Pleistocene and Holocene coastal palaeoeconomies: a reconsideration of the molluscan evidence from northern Spain. *Geoarchaeology* 18:175–204
- Bailey GN, Milner N (2008) Molluscan archives from European prehistory. In: Antczak A, Cipriani R (eds) *Early human impact on megamolluscs* (British archaeological series). Archaeopress, Oxford
- Baker A, Bradley C, Phipps SJ, Fischer M, Fairchild IJ, Fuller L, Spoetl C, Azcurra C (2012) Millennial-length forward models and pseudoproxies of stalagmite  $\delta^{18}\text{O}$ : an example from NW Scotland. *Clim Past* 8:1153–1167
- Barats A, Amouroux D, Chauvaud L, Pecheyran C, Lorrain A, Thébault J, Church TM, Donard OFX (2009) High frequency barium profiles in shells of the Great Scallop *Pecten maximus*: a methodical long-term and multi-site survey in Western Europe. *Biogeosciences* 6:157–170
- Barats A, Amouroux D, Pecheyran C, Chauvaud L, Thébault J, Donard OFX (2010) Spring molybdenum enrichment in scallop shells: a potential tracer of diatom productivity in temperate coastal environments (Brittany, NW France). *Biogeosciences* 7:233–245
- Beierlein L, Salvigsen O, Schöne BR, Mackensen A, Brey T (2015) The seasonal water temperature cycle in the Arctic Dicksonfjord (Svalbard) during the Holocene climate optimum derived from subfossil *Arctica islandica* shells. *The Holocene* 25:1197–1207
- Bellotto VR, Miekeley N (2007) Trace metals in mussel shells and corresponding soft tissue samples: a validation experiment for the use of *Perna perna* shells in pollution monitoring. *Anal Bioanal Chem* 389:769–776
- Betts RA, Jones CD, Knight JR, Keeling RF, Kennedy JJ (2016) El Niño and a record CO<sub>2</sub> rise. *Nat Clim Chang* 6:806–810
- Bird DW, Bird RLB (1997) Contemporary shellfish gathering strategies among the Meriam of the Torres Strait islands, Australia: testing predictions of a central place foraging model. *J Archaeol Sci* 24:39–63
- Black BA (2009) Climate-driven synchrony across tree, bivalve, and rockfish growth-increment chronologies of the Northeast Pacific. *Mar Ecol Prog Ser* 378:37–46
- Black BA, Copenheaver CA, Frank DC, Stuckey MJ, Kormanyos RE (2009) Multi-proxy reconstructions of northeastern Pacific Sea surface temperature data from trees and Pacific geoduck. *Palaeogeogr Palaeoclimatol Palaeoecol* 278:40–47

- Black BA, Sydeman WJ, Frank DC, Griffin D, Stahle DW, Garcia-Reyes M, Rykaczewski RR, Bograd SJ, Peterson WT (2014) Six centuries of variability and extremes in a coupled marine-terrestrial ecosystem. *Science* 345:1498–1502
- Black H, Andrus C, Lambert W, Rick T, Gillikin D (2017)  $\delta^{15}\text{N}$  values in *Crassostrea virginica* shells provides early direct evidence for nitrogen loading to Chesapeake Bay. *Sci Rep* 7
- Boden TA, Marland G, Andres RJ (2015) Global, regional, and national fossil-fuel CO<sub>2</sub> emissions. Carbon Dioxide Information Analysis Center, Oak Ridge National Laboratory, U.S. Department of Energy, Oak Ridge
- Bougeois L, De Rafelis M, Reichart G-J, De Nooijer LJ, Nicollin F, Dupont-Nivet G (2014) A high resolution study of trace elements and stable isotopes in oyster shells to estimate Central Asian Middle Eocene seasonality. *Chem Geol* 363:200–212
- Bourgoin BP (1990) *Mytilus-Edulis* shell as a bioindicator of lead pollution – considerations on bioavailability and variability. *Mar Ecol Prog Ser* 61:253–262
- Bourgoin B, Risk M (1987) Historical changes in lead in the Eastern Canadian Arctic, determined from fossil and modern *Mya truncata* shells. *Sci Total Environ* 67:287–291
- Bouzouggar A, Barton N, Vanhaeren M, D’Errico F, Collcutt S, Higham T, Hodge E, Parfitt S, Rhodes E, Schwenninger J-L, Stringer C, Turner E, Ward S, Moutmir A, Stambouli A (2007) 82,000-year-old shell beads from North Africa and implications for the origins of modern human behavior. *Proc Nat Acad Sci U S A* 104:9964–9969
- Breitenmoser P, Broennimann S, Frank D (2014) Forward modelling of tree-ring width and comparison with a global network of tree-ring chronologies. *Clim Past* 10:437–449
- Brey T, Mackensen A (1997) Stable isotopes prove shell growth bands in the Antarctic bivalve *Laternula elliptica* to be formed annually. *Polar Biol* 17:465–468
- Brocas WM, Reynolds DJ, Butler PG, Richardson CA, Scourse JD, Ridgway ID, Ramsay K (2013) The dog cockle, *Glycymeris glycymeris* (L.), a new annually-resolved sclerochronological archive for the Irish Sea. *Palaeogeogr Palaeoclimatol Palaeoecol* 373:133–140
- Burchell M, Cannon A, Hallmann N, Schwarcz H, Schöne B (2013) Inter-site variability in the season of shellfish collection on the central coast of British Columbia. *J Archaeol Sci* 40:626–636
- Butler PG, Scourse JD, Richardson CA, Wanamaker AD Jr, Bryant CL, Bennell JD (2009) Continuous marine radiocarbon reservoir calibration and the <sup>13</sup>C Suess effect in the Irish Sea: results from the first multi-centennial shell-based marine master chronology. *Earth Planet Sci Lett* 279:230–241
- Butler PG, Richardson CA, Scourse JD, Wanamaker AD Jr, Shammon TM, Bennell JD (2010) Marine climate in the Irish Sea: analysis of a 489-year marine master chronology derived from growth increments in the shell of the clam *Arctica islandica*. *Quat Sci Rev* 29:1614–1632
- Butler PG, Wanamaker AD Jr, Scourse JD, Richardson CA, Reynolds DJ (2011) Long-term stability of  $\delta^{13}\text{C}$  with respect to biological age in the aragonite shell of mature specimens of the bivalve mollusk *Arctica islandica*. *Palaeogeogr Palaeoclimatol Palaeoecol* 302:21–30
- Butler PG, Wanamaker AD Jr, Scourse JD, Richardson CA, Reynolds DJ (2013) Variability of marine climate on the North Icelandic shelf in a 1357-year proxy archive based on growth increments in the bivalve *Arctica islandica*. *Palaeogeogr Palaeoclimatol Palaeoecol* 373:141–151
- Cannon A, Burchell M (2017) Reconciling oxygen isotope sclerochronology with interpretations of millennia of seasonal shellfish collection on the Pacific Northwest Coast. *Quat Int* 427:184–191
- Cariou E, Guivel C, La C, Lenta L, Elliot M (2017) Lead accumulation in oyster shells, a potential tool for environmental monitoring. *Mar Pollut Bull* 125:19–29
- Carmichael RH, Hattenrath T, Valiela I, Michener RH (2008) Nitrogen stable isotopes in the shell of *Mercenaria mercenaria* trace wastewater inputs from watersheds to estuarine ecosystems. *Aquat Biol* 4:99–111
- Carré M, Bentaleb I, Blamart D, Ogle N, Cardenas F, Zevallos S, Kalin RM, Ortlieb L, Fontugne M (2005) Stable isotopes and sclerochronology of the bivalve *Mesodesma donacium*: potential application to Peruvian paleoceanographic reconstructions. *Palaeogeogr Palaeoclimatol Palaeoecol* 228:4–25

- Carré M, Bentaleb I, Bruguier O, Ordinola E, Barrett NT, Fontugne M (2006) Calcification rate influence on trace element concentrations in aragonitic bivalve shells: evidences and mechanisms. *Geochim Cosmochim Acta* 70:4906–4920
- Carré M, Klaric L, Lavalée D, Julien M, Bentaleb I, Fontugne M, Kawka O (2009) Insights into early Holocene hunter-gatherer mobility on the Peruvian Southern Coast from mollusk gathering seasonality. *J Archaeol Sci* 36:1173–1178
- Carré M, Sachs JP, Purca S, Schauer AJ, Braconnot P, Falcon RA, Julien M, Lavalée D (2014) Holocene history of ENSO variance and asymmetry in the eastern tropical Pacific. *Science* 345:1045–1048
- Carré M, Jackson D, Maldonado A, Chase BM, Sachs JP (2016) Variability of C-14 reservoir age and air-sea flux of CO<sub>2</sub> in the Peru-Chile upwelling region during the past 12,000 years. *Quat Res* 85:87–93
- Carriker MR, Palmer RE, Sick LV, Johnson CC (1980) Interaction of mineral elements in seawater and shell of oysters (*Crassostrea virginica* (Gmelin)) cultured in controlled and natural systems. *J Exp Mar Biol Ecol* 46:279–296
- Carroll ML, Johnson BJ, Henkes GA, McMahon KW, Voronkov A, Ambrose WG Jr, Denisenko SG (2009) Bivalves as indicators of environmental variation and potential anthropogenic impacts in the southern Barents Sea. *Mar Pollut Bull* 59:193–206
- Chauvaud L, Lorrain A, Dunbar RB, Paulet YM, Thouzeau G, Jean F, Guarini JM, Mucciarone D (2005) Shell of the great scallop *Pecten maximus* as a high-frequency archive of paleoenvironmental changes. *Geochemistry Geophysics Geosystems* 6:Q08001
- Chow TJ, Snyder HG, Snyder CB (1976) Mussels (*mytilus* sp.) as an indicator of lead pollution. *Sci Total Environ* 6:55–63
- Claassen C (1998) *Shells*. Cambridge University Press, Cambridge
- Coupland G, Bilton D, Clark T, Cybulski JS, Frederick G, Holland A, Letham B, Williams BG (2017) A wealth of beads: evidence for material wealth-based inequality in the Salish Sea region, 400–3500 Cal. BP. *Am Antiq* 81:294–315
- Dahlgren TG, Weinberg JR, Halanych KM (2000) Phylogeography of the ocean quahog (*Arctica islandica*): influences of paleoclimate on genetic diversity and species range. *Mar Biol* 137:487–495
- De Garine I, Harrison GA (1988) *Coping with uncertainty in food supply*. Clarendon Press, Oxford
- De Ridder F, Pintelon R, Schoukens J, Gillikin D, Andre L, Baeyens W, De Brauwere A, Dehairs F (2004) Decoding nonlinear growth rates in biogenic environmental archives. *Geochemistry Geophysics Geosystems* 5:Q12015
- Deith MR (1986) Subsistence strategies at a Mesolithic camp site – evidence from stable isotope analyses of shells. *J Archaeol Sci* 13:61–78
- Der Sarkassian C, Picheraeu V, Dupont C, Ilsøe PC, Perrigault M, Butler PG, Chauvaud L, Eiriksson J, Scourse JD, Paillard C, Orlando L (2017) Ancient DNA analysis identifies marine mollusc shells as new metagenomic archives of the past. *Mol Ecol Resour* 17:835–853
- Dettman DL, Reische AK, Lohmann KC (1999) Controls on the stable isotope composition of seasonal growth bands in aragonitic fresh-water bivalves (unionidae). *Geochim Cosmochim Acta* 63:1049–1057
- Dettman DL, Flessa KW, Roopnarine PD, Schöne BR, Goodwin DH (2004) The use of oxygen isotope variation in shells of estuarine mollusks as a quantitative record of seasonal and annual Colorado River discharge. *Geochim Cosmochim Acta* 68:1253–1263
- Dreier A, Stannek L, Blumenberg M, Taviani M, Sigovini M, Wrede C, Thiel V, Hoppert M (2012) The fingerprint of chemosymbiosis: origin and preservation of isotopic biosignatures in the nonseep bivalve *Loripes lacteus* compared with *Venerupis aurea*. *FEMS Microbiol Ecol* 81:480–493
- Driscoll R, Elliot M, Russon T, Welsh K, Yokoyama Y, Tudhope A (2014) ENSO reconstructions over the past 60 ka using giant clams (*Tridacna* sp.) from Papua New Guinea. *Geophys Res Lett* 41:6819–6825



- Dunca E, Mutvei H, Goransson P, Morth C-M, Schöne BR, Whitehouse MJ, Elfman M, Baden SP (2009) Using ocean quahog (*Arctica islandica*) shells to reconstruct palaeoenvironment in A-resund, Kattegat and Skagerrak, Sweden. *Int J Earth Sci* 98:3–17
- Duncan PF, Ghys A (2019) Shells as collectors' items. In: Smaal A et al (eds) *Goods and services of marine bivalves*. Springer, Cham, pp 381–411
- Duprey N, Lazareth CE, Corregge T, Le Cornec F, Maes C, Pujol N, Madeng-Yogo M, Caquineau S, Derome CS, Cabioch G (2012) Early mid-Holocene SST variability and surface-ocean water balance in the southwest Pacific. *Paleoceanography* 27:12
- Duprey N, Galipaud JC, Cabioch G, Lazareth CE (2014) Isotopic records from archeological giant clams reveal a variable climate during the southwestern Pacific colonization ca. 3.0 ka BP. *Palaeogeogr Palaeoclimatol Palaeoecol* 404:97–108
- Duprey N, Lazareth CE, Dupouy C, Butscher J, Farman R, Maes C, Cabioch G (2015) Calibration of seawater temperature and  $\delta^{18}\text{O}$  (seawater) signals in *Tridacna maxima*'s  $\delta^{18}\text{O}$  (shell) record based on in situ data. *Coral Reefs* 34:437–450
- Eagle R, Eiler J, Tripathi A, Ries J, Freitas P, Hiebenthal C, Wanamaker A, Taviani M, Elliot M, Marensi S, Nakamura K, Ramirez P, Roy K (2013) The influence of temperature and seawater carbonate saturation state on  $^{13}\text{C}$ - $^{18}\text{O}$  bond ordering in bivalve mollusks. *Biogeosciences* 10:4591–4606
- Eerkens JW, Schwitalla AW, Spero HJ, Nesbit R (2016) Staple, feasting, or fallback food? Mussel harvesting among hunter-gatherers in interior central California. *J Ethnobiol* 36:476–492
- Ekwurzel B, Schlosser P, Mortlock RA, Fairbanks RG, Swift JH (2001) River runoff, sea ice melt-water, and Pacific water distribution and mean residence times in the Arctic Ocean. *Journal of Geophysical Research-Oceans* 106:9075–9092
- Elliot M, Welsh K, Chilcott C, McCulloch M, Chappell J, Ayling B (2009) Profiles of trace elements and stable isotopes derived from giant long-lived *Tridacna gigas* bivalves: potential applications in paleoclimate studies. *Palaeogeogr Palaeoclimatol Palaeoecol* 280:132–142
- Ellis GS, Herbert G, Hollander D (2014) Reconstructing carbon sources in a dynamic estuarine ecosystem using oyster amino acid  $\delta^{13}\text{C}$  values from shell and tissue. *J Shellfish Res* 33:217–225
- Emile-Geay J, Cobb KM, Carré M, Braconnot P, Leloup J, Zhou Y, Harrison SP, Corregge T, McGregor HV, Collins M, Driscoll R, Elliot M, Schneider B, Tudhope A (2016) Links between tropical Pacific seasonal, interannual and orbital variability during the Holocene. *Nat Geosci* 9:168–173
- Epstein S, Buchsbaum R, Lowenstam HA, Urey HC (1953) Revised carbonate-water isotopic temperature scale. *Bull Geol Soc Am* 64:1315–1326
- Erlandson JM (2001) The archaeology of aquatic adaptations: paradigms for a new millennium. *J Archaeol Res* 9:287–350
- Evans MN, Kaplan A, Cane MA (1998) Optimal sites for coral-based reconstruction of global sea surface temperature. *Paleoceanography* 13:502–516
- Fang M, Li X (2016) Paleoclimate data assimilation: its motivation, progress and prospects. *Sci Chin-Earth Sci* 59:1817–1826
- Fitzhugh B (1995) Clams and the Kachemak: seasonal shellfish use on Kodiak Island, Alaska (1200–800 BP). *Res Econ Anthropol* 16:129–176
- Fontugne M, Carré M, Bentaleb I, Julien M, Lavalée D (2004) Radiocarbon reservoir age variations in the south Peruvian upwelling during the holocene. *Radiocarbon* 46:531–537
- Fortunato H (2014) Mollusks: tools in environmental and climate research. *Am Malacol Bull* 33:310–324
- Francey RJ, Allison CE, Etheridge DM, Trudinger CM, Enting IG, Leuenberger M, Langenfelds RL, Michel E, Steele LP (1999) A 1000-year high precision record of  $\delta^{13}\text{C}$  in atmospheric  $\text{CO}_2$ . *Tellus Ser B-Chem Phys Meteorol* 51:170–193
- Freitas PS, Clarke LJ, Kennedy HA, Richardson CA (2008) Inter- and intra-specimen variability masks reliable temperature control on shell Mg/Ca ratios in laboratory- and field-cultured *Mytilus edulis* and *Pecten maximus* (bivalvia). *Biogeosciences* 5:1245–1258



- Freitas PS, Clarke LJ, Kennedy H, Richardson CA (2009) Ion microprobe assessment of the heterogeneity of Mg/Ca, Sr/Ca and Mn/Ca ratios in *Pecten maximus* and *Mytilus edulis* (bivalvia) shell calcite precipitated at constant temperature. *Biogeosciences* 6:1209–1227
- Freitas PS, Clarke LJ, Kennedy H, Richardson CA (2016) Manganese in the shell of the bivalve *Mytilus edulis*: seawater Mn or physiological control? *Geochim Cosmochim Acta* 194:266–278
- Fritz LW, Ragone LM, Lutz RA, Swapp S (1990) Biomineralization of barite in the shell of the freshwater Asiatic clam *Corbicula fluminea* (Mollusca, Bivalvia). *Limnol Oceanogr* 35:756–762
- Fuge R, Palmer TJ, Pearce NJG, Perkins WT (1993) Minor and trace-element chemistry of modern shells – a laser ablation inductively coupled plasma mass-spectrometry study. *Appl Geochem Suppl* 2:111–116
- Gesamp (2001) A sea of troubles. (IMO/FAO/UNESCO-IOC/WMO/WHGESAMP (IMO/FAO/UNESCO-IOC/WMO/WHO/IAEA/UN/UNEP Joint Group of Experts on the Scientific Aspects of Marine Environmental Protection) and Advisory Committee on Protection of the Sea
- Gillikin DP, De Ridder F, Ulens H, Elskens M, Keppens E, Baeyens W, Dehairs F (2005a) Assessing the reproducibility and reliability of estuarine bivalve shells (*Saxidomus giganteus*) for sea surface temperature reconstruction: implications for paleoclimate studies. *Palaeogeogr Palaeoclimatol Palaeoecol* 228:70–85
- Gillikin DP, Dehairs F, Baeyens W, Navez J, Lorrain A, Andre L (2005b) Inter- and intra-annual variations of Pb/cu ratios in clam shells (*Mercenaria mercenaria*): a record of anthropogenic lead pollution? *Mar Pollut Bull* 50:1530–1540
- Gillikin DP, Lorrain A, Navez J, Taylor JW, Keppens E, Baeyens W, Dehairs F (2005c) Strong biological controls on Sr/Ca ratios in aragonitic marine bivalve shells. *Geochem Geophys Geosyst* 6:Q05009–Q05009
- Gillikin DP, Lorrain A, Bouillon S, Willenz P, Dehairs F (2006) Stable carbon isotopic composition of *Mytilus edulis* shells: relation to metabolism, salinity,  $\delta^{13}\text{C}$  (DIC) and phytoplankton. *Org Geochem* 37:1371–1382
- Gillikin DP, Lorrain A, Meng L, Dehairs F (2007) A large metabolic carbon contribution to the  $\delta^{13}\text{C}$  record in marine aragonitic bivalve shells. *Geochim Cosmochim Acta* 71:2936–2946
- Gillikin DP, Lorrain A, Paulet Y-M, Andre L, Dehairs F (2008) Synchronous barium peaks in high-resolution profiles of calcite and aragonite marine bivalve shells. *Geo-Mar Lett* 28:351–358
- Gillikin DP, Lorrain A, Jolivet A, Kelemen Z, Chauvaud L, Bouillon S (2017) High-resolution nitrogen stable isotope sclerochronology of bivalve shell carbonate-bound organics. *Geochim Cosmochim Acta* 200:55–66
- Goodwin DH, Flessa KW, Schöne BR, Dettman DL (2001) Cross-calibration of daily growth increments, stable isotope variation, and temperature in the Gulf of California bivalve mollusk *Chione cortezi*: implications for paleoenvironmental analysis. *PALAIOS* 16:387–398
- Goodwin DH, Schöne BR, Dettman DL (2003) Resolution and fidelity of oxygen isotopes as paleotemperature proxies in bivalve mollusk shells: models and observations. *PALAIOS* 18:110–125
- Goodwin D, Paul P, Wissink C (2009) MoGroFunGen: a numerical model for reconstructing intra-annual growth rates of bivalve molluscs. *Palaeogeogr Palaeoclimatol Palaeoecol* 276:47–55
- Graniero LE, Grossman EL, O’Dea A (2016) Stable isotopes in bivalves as indicators of nutrient source in coastal waters in the Bocas del Toro Archipelago, Panama. *PeerJ* 4:e2278–e2278
- Grossman EL, Ku TL (1986) Oxygen and carbon isotope fractionation in biogenic aragonite – temperature effects. *Chem Geol* 59:59–74
- Habu J, Matsui A, Yamamoto N, Kanno T (2011) Shell midden archaeology in Japan: aquatic food acquisition and long-term change in the Jomon culture. *Quat Int* 239:19–27
- Hahn S, Griesshaber E, Schmahl WW, Neuser RD, Ritter A-C, Hoffmann R, Buhl D, Niedermayr A, Geske A, Immenhauser A (2014) Exploring aberrant bivalve shell ultrastructure and geochemistry as proxies for past sea water acidification. *Sedimentology* 61:1625–1658
- Hallmann N, Burchell M, Schöne BR, Irvine GV, Maxwell D (2009) High-resolution sclerochronological analysis of the bivalve mollusk *Saxidomus gigantea* from Alaska and British Columbia:

- techniques for revealing environmental archives and archaeological seasonality. *J Archaeol Sci* 36:2353–2364
- Harding JM, King SE, Powell EN, Mann R (2008) Decadal trends in age structure and recruitment patterns of ocean quahogs *Arctica islandica* from the Mid-Atlantic Bight in relation to water temperature. *J Shellfish Res* 27:667–690
- Hardy K, Camara A, Pique R, Dioh E, Gueye M, Diadhio HD, Faye M, Carré M (2016) Shellfishing and shell midden construction in the Saloum Delta, Senegal. *J Anthropol Archaeol* 41:19–32
- Hare SR, Mantua NJ (2000) Empirical evidence for North Pacific regime shifts in 1977 and 1989. *Prog Oceanogr* 47:103–145
- Helama S, Hood BC (2011) Stone Age midden deposition assessed by bivalve sclerochronology and radiocarbon wiggle-matching of *Arctica islandica* shell increments. *J Archaeol Sci* 38:452–460
- Helser TE, Lai H-L, Black BA (2012) Bayesian hierarchical modeling of Pacific geoduck growth increment data and climate indices. *Ecol Model* 247:210–220
- Henshilwood C, Nilssen P, Parkington J (1994) Mussel drying and food storage in the late Holocene, SW Cape, South-Africa. *J Field Archaeol* 21:103–109
- Holland H, Schöne B, Marali S, Jochum K (2014) History of bioavailable lead and iron in the Greater North Sea and Iceland during the last millennium – a bivalve sclerochronological reconstruction. *Mar Pollut Bull* 87:104–116
- Holmden C, Hudson J (2003)  $^{87}\text{Sr}$ - $^{86}\text{Sr}$  and Sr/Ca investigation of Jurassic mollusks from Scotland: implications for paleosalinities and the Sr/Ca ratio of seawater. *Geol Soc Am Bull* 115:1249–1264
- Ingram BL, Southon JR (1996) Reservoir ages in eastern Pacific coastal and estuarine waters. *Radiocarbon* 38:573–582
- IPCC (2014) Summary for policymakers. In: Field CB, Barros VR, Dokken DJ, Mach KJ, Mastrandrea MD, Bilir TE, Chatterjee M, Ebi KL, Estrada YO, Genova RC, Girma B, Kissel ES, Levy AN, MacCracken S, Mastrandrea PR, White LL (eds) *Climate change 2014: impacts, adaptation, and vulnerability. Part A: global and sectoral aspects. Contribution of Working Group II to the Fifth Assessment Report of the Intergovernmental Panel on Climate Change*. Cambridge University Press, Cambridge/New York, pp 1–32
- Izzo C, Doubleday ZA, Grammer GL, Disspain MCF, Ye Q, Gillanders BM (2017) Seasonally resolved environmental reconstructions using fish otoliths. *Can J Fish Aquat Sci* 74:23–31
- Jew NP, Erlandson JM, Watts J, White FJ (2013) Shellfish, seasonality, and stable isotope sampling:  $^{18}\text{O}$  analysis of mussel shells from an 8,800-year-old shell midden on California's Channel Islands. *J Island Coast Archaeol* 8:170–189
- Jolivet A, Asplin L, Strand O, Thébault J, Chauvaud L (2015) Coastal upwelling in Norway recorded in great scallop shells. *Limnol Oceanogr* 60:1265–1275
- Jones DS (1983) Sclerochronology – reading the record of the molluscan Shell. *Am Sci* 71:384–391
- Jones DS, Quitmyer IR (1996) Marking time with bivalve shells: oxygen isotopes and season of annual increment formation. *PALAIOS* 11:340–346
- Kaandorp RJG, Vonhof HB, Wesselingh FP, Pittman LR, Kroon D, Van Hinte JE (2005) Seasonal Amazonian rainfall variation in the Miocene climate optimum. *Palaeogeogr Palaeoclimatol Palaeoecol* 221:1–6
- Kennedy H, Richardson CA, Duarte CM, Kennedy DP (2001) Oxygen and carbon stable isotopic profiles of the fan mussel, *Pinna nobilis*, and reconstruction of sea surface temperatures in the Mediterranean. *Mar Biol* 139:1115–1124
- Khim BK, Krantz DE, Cooper LW, Grebmeier JM (2003) Seasonal discharge of estuarine freshwater to the western Chukchi Sea shelf identified in stable isotope profiles of mollusk shells. *J Geophys Res Oceans* 108:3300–3300
- Kilada RW, Roddick D, Mombourquette K (2007) Age determination, validation, growth and minimum size of sexual maturity of the Greenland smooth cockle (*Serripes groenlandicus*, Bruguiere, 1789) in eastern Canada. *J Shellfish Res* 26:443–450

- Killingley JS (1981) Seasonality of mollusk collecting determined from  $^{18}\text{O}$  profiles of midden shells. *Am Antiq* 46:152–158
- Killingley JS, Berger WH (1979) Stable isotopes in a mollusk shell – detection of upwelling events. *Science* 205:186–188
- Kim ST, O’Neil JR (1997) Equilibrium and nonequilibrium oxygen isotope effects in synthetic carbonates. *Geochim Cosmochim Acta* 61:3461–3475
- Klein RT, Lohmann KC, Thayer CW (1996) Sr/Ca and C-13/C-12 ratios in skeletal calcite of *Mytilus trossulus*: covariation with metabolic rate, salinity, and carbon isotopic composition of seawater. *Geochim Cosmochim Acta* 60:4207–4221
- Klunder M, Hippler D, Witbaard R, Frei D (2008) Laser ablation analysis of bivalve shells – archives of environmental information. *Geol Surv Denmark Greenland Bull*:89–92
- Koide M, Lee DS, Goldberg ED (1982) Metal and transuranic records in Mussel shells, byssal threads and tissues. *Estuar Coast Shelf Sci* 15:679–695
- Kovacs CJ, Daskin JH, Patterson H, Carmichael RH (2010) *Crassostrea virginica* shells record local variation in wastewater inputs to a coastal estuary. *Aquat Biol* 9:77–84
- Krantz DE, Jones DS, Williams DF (1984) Growth-rates of the sea scallop, *Placopecten Magellanicus*, determined from the  $\delta^{18}\text{O}$  record in shell calcite. *Biol Bull* 167:186–199
- Krause-Nehring J, Brey T, Thorrold SR (2012) Centennial records of lead contamination in northern Atlantic bivalves (*Arctica islandica*). *Mar Pollut Bull* 64:233–240
- Kyle R, Pearson B, Fielding PJ, Robertson WD, Birnie SL (1997) Subsistence shellfish harvesting in the Maputland marine reserve in northern KwaZulu-Natal, South Africa: rocky shore organisms. *Biol Conserv* 82:183–192
- Lazareth CE, Le Cornec F, Candaudap F, Freydier R (2013) Trace element heterogeneity along isochronous growth layers in bivalve shell: consequences for environmental reconstruction. *Palaeogeogr Palaeoclimatol Palaeoecol* 373:39–49
- Levin LA, Hoenisch B, Frieder CA (2015) Geochemical proxies for estimating faunal exposure to ocean acidification. *Oceanography* 28:62–73
- Liehr GA, Zettler ML, Leipe T, Witt G (2005) The ocean quahog *Arctica islandica* L.: a bioindicator for contaminated sediments. *Mar Biol* 147:671–679
- Lightfoot KG, Cerrato RM, Wallace HVE (1993) Prehistoric shellfish-harvesting strategies – implications from the growth-patterns of soft-shell clams (*Mya arenaria*). *Antiquity* 67:358–369
- Lingard SM, Evans RD, Bourgoin BP (1992) Method for the estimation of organic-bound and crystal-bound metal concentrations in bivalve shells. *Bull Environ Contam Toxicol* 48:179–184
- Liu W, Xie S-P, Liu Z, Zhu J (2017) Overlooked possibility of a collapsed Atlantic meridional overturning circulation in warming climate. *Sci Adv* 3:e1601666
- Liu YW, Aciego SM, Wanamaker AD Jr (2015) Environmental controls on the boron and strontium isotopic composition of aragonite shell material of cultured *Arctica islandica*. *Biogeosciences* 12:3351–3368
- Loader NJ, Young GHF, Grudd H, McCarroll D (2013) Stable carbon isotopes from Tornetrask, northern Sweden provide a millennial length reconstruction of summer sunshine and its relationship to Arctic circulation. *Quat Sci Rev* 62:97–113
- Lorens RB, Bender ML (1977) Physiological exclusion of magnesium from *Mytilus-edulis* calcite. *Nature* 269:793–794
- Macfarlane GR, Markich SJ, Linz K, Gifford S, Dunstan RH, O’connor W, Russell RA (2006) The Akoya pearl oyster shell as an archival monitor of lead exposure. *Environ Pollut* 143:166–173
- Mae A, Yamanaka T, Shimoyama S (2007) Stable isotope evidence for identification of chemosynthesis-based fossil bivalves associated with cold-seepages. *Palaeogeogr Palaeoclimatol Palaeoecol* 245:411–420
- Marali S, Schöne B (2015) Oceanographic control on shell growth of *Arctica islandica* (Bivalvia) in surface waters of Northeast Iceland – implications for paleoclimate reconstructions. *Palaeogeogr Palaeoclimatol Palaeoecol* 420:138–149
- Marin F, Le Roy N, Marie B (2012) The formation and mineralization of mollusk shell. *Front Biosci* S4:1099–1125

- Markich SJ, Jeffree RA, Burke PT (2002) Freshwater bivalve shells as archival indicators of metal pollution from a copper-uranium mine in tropical northern Australia. *Environ Sci Technol* 36:821–832
- Marquardt WH (2010) Shell mounds in the southeast: middens, monuments, temple mounds, rings, or works? *Am Antiq* 75:551–570
- Marsh R, Petrie B, Weidman CR, Dickson RR, Loder JW, Hannah CG, Frank K, Drinkwater K (1999) The 1882 tilefish kill – a cold event in shelf waters off the North-Eastern United States? *Fish Oceanogr* 8:39–49
- Mazloumi N, Burch P, Fowler AJ, Doubleday ZA, Gillanders BM (2017) Determining climate-growth relationships in a temperate fish: a sclerochronological approach. *Fish Res* 186:319–327
- McConnaughey TA, Burdett J, Whelan JF, Paull CK (1997) Carbon isotopes in biological carbonates: respiration and photosynthesis. *Geochim Cosmochim Acta* 61:611–622
- Mette MJ, Wanamaker AD Jr, Carroll ML, Ambrose WG Jr, Retelle MJ (2016) Linking large-scale climate variability with *Arctica islandica* shell growth and geochemistry in northern Norway. *Limnol Oceanogr* 61:748–764
- Milano S, Schöne BR, Wang S, Mueller WE (2016) Impact of high pCO<sub>2</sub> on shell structure of the bivalve *Cerastoderma edule*. *Mar Environ Res* 119:144–155
- Milano S, Schöne BR, Witbaard R (2017) Changes of shell microstructural characteristics of *Cerastoderma edule* (Bivalvia) – a novel proxy for water temperature. *Palaeogeogr Palaeoclimatol Palaeoecol* 465:395–406
- Milner N (2001) At the cutting edge: using thin sectioning to determine season of death of the European oyster, *Ostrea edulis*. *J Archaeol Sci* 28:861–873
- Minobe S (1997) A 50–70 year climatic oscillation over the North Pacific and North America. *Geophys Res Lett* 24:683–686
- Mook WG, Vogel JC (1968) Isotopic equilibrium between shells and their environment. *Science* 159:874–875
- Morrongiello JR, Thresher RE (2015) A statistical framework to explore ontogenetic growth variation among individuals and populations: a marine fish example. *Ecol Monogr* 85:93–115
- Morrongiello JR, Thresher RE, Smith DC (2012) Aquatic biochronologies and climate change. *Nat Clim Chang* 2:849–857
- Moss M (2011) Northwest coast: archaeology as deep history. SAA Press, Washington, DC
- Mueller P, Taylor MH, Klicpera A, Wu HC, Michel J, Westphal H (2015) Food for thought: mathematical approaches for the conversion of high-resolution sclerochronological oxygen isotope records into sub-annually resolved time series. *Palaeogeogr Palaeoclimatol Palaeoecol* 440:763–776
- Mueller-Lupp T, Erlenkeuser H, Bauch HA (2003) Seasonal and interannual variability of Siberian river discharge in the Laptev Sea inferred from stable isotopes in modern bivalves. *Boreas* 32:292–303
- Muller-Lupp T, Bauch H (2005) Linkage of Arctic atmospheric circulation and Siberian shelf hydrography: a proxy validation using  $\delta^{18}\text{O}$  records of bivalve shells. *Glob Planet Chang* 48:175–186
- Nicholson S, Szefer P (2003) Accumulation of metals in the soft tissues, byssus and shell of the mytilid mussel *Perna viridis* (Bivalvia: Mytilidae) from polluted and uncontaminated locations in Hong Kong coastal waters. *Mar Pollut Bull* 46:1039–1043
- Nishida K, Ishimura T, Suzuki A, Sasaki T (2012) Seasonal changes in the shell microstructure of the bloody clam, *Scapharca broughtonii* (Mollusca: Bivalvia: Arcidae). *Palaeogeogr Palaeoclimatol Palaeoecol* 363:99–108
- O'Donnell TH, Macko SA, Chou J, Davis-Hartten KL, Wehmiller JF (2003) Analysis of  $\delta^{13}\text{C}$ ,  $\delta^{15}\text{N}$ , and  $\delta^{34}\text{S}$  in organic matter from the biominerals of modern and fossil *Mercenaria* spp. *Org Geochem* 34:165–183
- O'Donnell TH, Macko SA, Wehmiller JF (2007) Stable carbon isotope composition of amino acids in modern and fossil *Mercenaria*. *Org Geochem* 38:485–498



- O'Neil DD, Gillikin DP (2014) Do freshwater mussel shells record road-salt pollution? *Sci Rep* 4:7168–7168
- Okumara M, Eggers S (2014) The cultural dynamics of shell-matrix sites. In: Roksandic M, De Souza SM, Eggers S, Burchell M, Klokler D (eds) *The cultural dynamics of shell-matrix sites*. University of New Mexico Press, Albuquerque
- Orlando L, Ginolhac A, Zhang G, Froese D, Albrechtsen A, Stiller M, Schubert M, Cappellini E, Petersen B, Moltke I, Johnson PLF, Fumagalli M, Vilstrup JT, Raghavan M, Korneliusen T, Malaspinas A-S, Vogt J, Szklarczyk D, Kelstrup CD, Vinther J, Dolocan A, Stenderup J, Velazquez AMV, Cahill J, Rasmussen M, Wang X, Min J, Zazula GD, Seguin-Orlando A, Mortensen C, Magnussen K, Thompson JF, Weinstock J, Gregersen K, Roed KH, Eisenmann V, Rubin CJ, Miller DC, Antczak DF, Bertelsen MF, Brunak S, Al-Rasheid KAS, Ryder O, Andersson L, Mundy J, Krogh A, Gilbert MTP, Kjaer K, Sicheritz-Ponten T, Jensen LJ, Olsen JV, Hofreiter M, Nielsen R, Shapiro B, Wang J, Willerslev E (2013) Recalibrating Equus evolution using the genome sequence of an early middle Pleistocene horse. *Nature* 499:74–78
- Pearce NJG, Mann VL (2006) Trace metal variations in the shells of *Ensis siliqua* record pollution and environmental conditions in the sea to the west of mainland Britain. *Mar Pollut Bull* 52:739–755
- Perez-Huerta A, Etayo-Cadavid M, Andrus C, Jeffries T, Watkins C, Street S, Sandweiss D (2013) El Niño impact on mollusk biomineralization-implications for trace element proxy reconstructions and the paleo-archeological record. *PLoS One* 8:e54274
- Phipps SJ, Mcgregor HV, Gergis J, Gallant AJE, Neukom R, Stevenson S, Ackerley D, Brown JR, Fischer MJ, Van Ommen TD (2013) Paleoclimate data-model comparison and the role of climate forcings over the past 1500 years. *J Clim* 26:6915–6936
- Pitts LC, Wallace GT (1994) Lead deposition in the shell of the bivalve, *Mya arenaria* – an indicator of dissolved lead in seawater. *Estuarine Coastal and Shelf Science* 39:93–104
- Poulain C, Gillikin DP, Thébault J, Munaron JM, Bohn M, Robert R, Paulet YM, Lorrain A (2015) An evaluation of Mg/Ca, Sr/Ca, and Ba/Ca ratios as environmental proxies in aragonite bivalve shells. *Chem Geol* 396:42–50
- Prendergast A, Schöne B (2017) Oxygen isotopes from limpet shells: implications for palaeothermometry and seasonal shellfish foraging studies in the Mediterranean. *Palaeogeogr Palaeoclimatol Palaeoecol* 484:33–47
- Price GD, Pearce NJG (1997) Biomonitoring of pollution by *Cerastoderma edule* from the British isles: a laser ablation ICP-MS study. *Mar Pollut Bull* 34:1025–1031
- Protasowicki M, Dural M, Jaremek J (2008) Trace metals in the shells of blue mussels (*Mytilus edulis*) from the Poland coast of Baltic Sea. *Environ Monit Assess* 141:329–337
- Prufer K, Racimo F, Patterson N, Jay F, Sankararaman S, Sawyer S, Heinze A, Renaud G, Sudmant PH, De Filippo C, Li H, Mallick S, Dannemann M, Fu Q, Kircher M, Kuhlwilm M, Lachmann M, Meyer M, Ongyerth M, Siebauer M, Theunert C, Tandon A, Moorjani P, Pickrell J, Mullikin JC, Vohr SH, Green RE, Hellmann I, Johnson PLF, Blanche H, Cann H, Kitzman JO, Shendure J, Eichler EE, Lein ES, Bakken TE, Golovanova LV, Doronichev VB, Shunkov MV, Derevianko AP, Viola B, Slatkin M, Reich D, Kelso J, Pääbo S (2014) The complete genome sequence of a Neanderthal from the Altai Mountains. *Nature* 505:43–49
- Puente X, Villares R, Carral E, Carballeira A (1996) Nacreous shell of *Mytilus galloprovincialis* as a biomonitor of heavy metal pollution in Galiza (NW Spain). *Sci Total Environ* 183:205–211
- Pyrina M, Wagner S, Zorita E (2017) Pseudo-proxy evaluation of climate field reconstruction methods of North Atlantic climate based on an annually resolved marine proxy network. *Clim Past* 13:1339–1354
- Rahmstorf S, Box JE, Feulner G, Mann ME, Robinson A, Rutherford S, Schaffernicht EJ (2015) Exceptional twentieth-century slowdown in Atlantic Ocean overturning circulation. *Nat Clim Chang* 5:475–480
- Raith A, Perkins WT, Pearce NJG, Jeffries TE (1996) Environmental monitoring on shellfish using UV laser ablation ICP-MS. *Fresen J Anal Chem* 355:789–792
- Reynolds DJ, Butler PG, Williams SM, Scourse JD, Richardson CA, Wanamaker AD Jr, Austin WEN, Cage AG, Sayer MDJ (2013) A multiproxy reconstruction of Hebridean (NW Scotland)



- spring sea surface temperatures between AD 1805 and 2010. *Palaeogeogr Palaeoclimatol Palaeoecol* 386:275–285
- Reynolds DJ, Richardson CA, Scourse JD, Butler PG, Hollyman P, Roman-Gonzalez A, Hall IR (2017) Reconstructing North Atlantic marine climate variability using an absolutely-dated sclerochronological network. *New Res Methods Appl Sclerochronol* 465(Part B):333–346
- Richardson CA (2001) Molluscs as archives of environmental change. *Oceanogr Mar Biol* 39:103–164
- Ridgway ID, Richardson CA, Scourse JD, Butler PG, Reynolds DJ (2012) The population structure and biology of the ocean quahog, *Arctica islandica*, in Belfast Lough, Northern Ireland. *J Mar Biol Assoc U K* 92:539–546
- Rocha J, Yletyinen J, Biggs R, Blenckner T, Peterson G (2015) Marine regime shifts: drivers and impacts on ecosystems services. *Philosophical Transactions of the Royal Society B-Biological Sciences* 370:20130273–20130273
- Roksandic M, Mendonca De Souza S, Klokler D, Eggers S, Burchell M (2014) Cultural dynamics of shell-matrix sites: diverse perspectives on biological remains from shell mounds and shell middens. University of New Mexico Press, Albuquerque
- Royer C, Thébault J, Chauvaud L, Olivier F (2013) Structural analysis and paleoenvironmental potential of dog cockle shells (*Glycymeris glycymeris*) in Brittany, Northwest France. *Palaeogeogr Palaeoclimatol Palaeoecol* 373:123–132
- Sabine CL, Feely RA, Gruber N, Key RM, Lee K, Bullister JL, Wanninkhof R, Wong CS, Wallace DWR, Tilbrook B, Millero FJ, Peng TH, Kozyr A, Ono T, Rios AF (2004) The oceanic sink for anthropogenic CO<sub>2</sub>. *Science* 305:367–371
- Schettler G, Pearce NJG (1996) Metal pollution recorded in extinct *Dreissena polymorpha* communities, Lake Breitling, Havel Lakes system, Germany: a laser ablation inductively coupled plasma mass spectrometry study. *Hydrobiologia* 317:1–11
- Schöne B (2008) The curse of physiology – challenges and opportunities in the interpretation of geochemical data from mollusk shells. *Geo-Mar Lett* 28:269–285
- Schöne B (2013) *Arctica islandica* (Bivalvia): a unique paleoenvironmental archive of the northern North Atlantic Ocean. *Glob Planet Chang* 111:199–225
- Schöne B, Giere O (2005) Growth increments and stable isotope variation in shells of the deep-sea hydrothermal vent bivalve mollusk *Bathymodiolus brevior* from the North Fiji Basin, Pacific Ocean. *Deep-Sea Research Part I-Oceanographic Research Papers* 52:1896–1910
- Schöne B, Fiebig J (2009) Seasonality in the North Sea during the Allerod and late medieval climate optimum using bivalve sclerochronology. *Int J Earth Sci* 98:83–98
- Schöne B, Krause R (2016) Retrospective environmental biomonitoring – Mussel Watch expanded. *Glob Planet Chang* 144:228–251
- Schöne B, Oschmann W, Rossler J, Castro A, Houk S, Kroncke I, Dreyer W, Janssen R, Rumohr H, Dunca E (2003) North Atlantic oscillation dynamics recorded in shells of a long-lived bivalve mollusk. *Geology* 31:1037–1040
- Schöne B, Castro A, Fiebig J, Houk S, Oschmann W, Kroncke I (2004) Sea surface water temperatures over the period 1884-1983 reconstructed from oxygen isotope ratios of a bivalve mollusk shell (*Arctica islandica*, southern North Sea). *Palaeogeogr Palaeoclimatol Palaeoecol* 212:215–232
- Schöne B, Fiebig J, Pfeiffer M, Gless R, Hickson J, Johnson A, Dreyer W, Oschmann W (2005a) Climate records from a bivalved methuselah (*Arctica islandica*, Mollusca; Iceland). *Palaeogeogr Palaeoclimatol Palaeoecol* 228:130–148
- Schöne B, Pfeiffer M, Pohlmann T, Siegismund F (2005b) A seasonally resolved bottom-water temperature record for the period ad 1866-2002 based on shells of *Arctica islandica* (Mollusca, North Sea). *Int J Climatol* 25:947–962
- Schöne B, Wanamaker A, Fiebig J, Thébault J, Kreutz K (2011) Annually resolved  $\delta^{13}\text{C}$  (shell) chronologies of long-lived bivalve mollusks (*Arctica islandica*) reveal oceanic carbon dynamics in the temperate North Atlantic during recent centuries. *Palaeogeogr Palaeoclimatol Palaeoecol* 302:31–42

- Scourse JD, Wanamaker AD Jr, Weidman C, Heinemeier J, Reimer PJ, Butler PG, Witbaard R, Richardson CA (2012) The marine radiocarbon bomb pulse across the temperate North Atlantic: a compilation of Delta C-14 time histories from *Arctica islandica* growth increments. *Radiocarbon* 54:165–186
- Schöne B, Radermacher P, Zhang Z, Jacob D (2013) Crystal fabrics and element impurities (Sr/Ca, Mg/Ca, and Ba/Ca) in shells of *Arctica islandica*-implications for paleoclimate reconstructions. *Palaeogeogr Palaeoclimatol Palaeoecol* 373:50–59
- Shackleton NJ (1973) Oxygen isotope analysis as a means of determining season of occupation of prehistoric midden sites. *Archaeometry* 15:133–141
- Shirai K, Schöne BR, Miyaji T, Radermacher P, Krause RA Jr, Tanabe K (2014) Assessment of the mechanism of elemental incorporation into bivalve shells (*Arctica islandica*) based on elemental distribution at the microstructural scale. *Geochim Cosmochim Acta* 126:307–320
- Simstich J, Harms I, Karcher MJ, Erlenkeuser H, Stanovoy V, Kodina L, Bauch D, Spielhagen RF (2005) Recent freshening in the Kara Sea (Siberia) recorded by stable isotopes in Arctic bivalve shells. *J Geophys Res Oceans* 110:C08006–C08006
- Smith EA, Wishnie M (2000) Conservation and subsistence in small-scale societies. *Annu Rev Anthropol* 29:493–524
- Soldati AL, Jacob DE, Glatzel P, Swarbrick JC, Geck J (2016) Element substitution by living organisms: the case of manganese in mollusc shell aragonite. *Sci Rep* 6:22514–22514
- Southon JR, Rodman AO, True D (1995) A comparison of marine and terrestrial radiocarbon ages from northern Chile. *Radiocarbon* 37:389–393
- Stein J (1992) Deciphering a shell midden. Academic, San Diego
- Steinhardt J, Butler PG, Carroll ML, Hartley J (2016) The application of long-lived bivalve sclerochronology in environmental baseline monitoring. *Front Mar Sci* 3:176
- Surge DM, Lohmann KC, Goodfriend GA (2003) Reconstructing estuarine conditions: oyster shells as recorders of environmental change, Southwest Florida. *Estuar Coast Shelf Sci* 57:737–756
- Swingedouw D, Ortega P, Mignot J, Guilyardi E, Masson-Delmotte V, Butler P, Khodri M, Seferian R (2015) Bidecadal North Atlantic ocean circulation variability controlled by timing of volcanic eruptions. *Nat Commun* 6:6545
- Tada Y, Wada H, Miura H (2006) Seasonal stable oxygen isotope cycles in an Antarctic bivalve shell (*Laternula elliptica*): a quantitative archive of ice melt runoff. *Antarct Sci* 18:111–115
- Takesue R, Van Geen A (2004) Mg/Ca, Sr/Ca, and stable isotopes in modern and holocene *Protothaca staminea* shells from a northern California coastal upwelling region. *Geochim Cosmochim Acta* 68:3845–3861
- Takesue RK, Bacon CR, Thompson JK (2008) Influences of organic matter and calcification rate on trace elements in aragonitic estuarine bivalve shells. *Geochim Cosmochim Acta* 72:5431–5445
- Tanaka N, Monaghan MC, Rye DM (1986) Contribution of metabolic carbon to mollusk and barnacle shell carbonate. *Nature* 320:520–523
- Tao J, Chen Y, He D, Ding C (2015) Relationships between climate and growth of *Gymnocypris selincuoensis* in the Tibetan Plateau. *Ecol Evol* 5:1693–1701
- Thébault J, Chauvaud L (2013) Li/calcium enrichments in great scallop shells (*Pecten maximus*) and their relationship with phytoplankton blooms. *Palaeogeogr Palaeoclimatol Palaeoecol* 373:108–122
- Thébault J, Chauvaud L, Clavier J, Guarini J, Dunbar RB, Fichez R, Mucciarone DA, Morize E (2007) Reconstruction of seasonal temperature variability in the tropical Pacific Ocean from the shell of the scallop, *Comptopallium radula*. *Geochim Cosmochim Acta* 71:918–928
- Thébault J, Chauvaud L, L'Helguen S, Clavier J, Barats A, Jacquet S, Pecheyran C, Amouroux D (2009a) Barium and molybdenum records in bivalve shells: geochemical proxies for phytoplankton dynamics in coastal environments? *Limnol Oceanogr* 54:1002–1014
- Thébault J, Schöne BR, Hallmann N, Barth M, Nunn EV (2009b) Investigation of Li/Ca variations in aragonitic shells of the ocean quahog *Arctica islandica*, northeast Iceland. *Geochim Geophys Geosyst* 10:Q12008–Q12008
- Thomas KD (2015a) Molluscs emergent, part II: themes and trends in the scientific investigation of molluscs and their shells as past human resources. *J Archaeol Sci* 56:159–167

- Thomas KD (2015b) Molluscs emergent, part I: themes and trends in the scientific investigation of mollusc shells as resources for archaeological research. *J Archaeol Sci* 56:133–140
- Thompson VD, Andrus CFT (2011) Evaluating mobility, monumentality, and feasting at the Sapelo Island Shell ring complex. *Am Antiq* 76:315–343
- Tolwinski-Ward S, Evans M, Hughes M, Anchukaitis K (2011) An efficient forward model of the climate controls on interannual variation in tree-ring width. *Clim Dyn* 36:2419–2439
- Torres ME, Zima D, Falkner KK, MacDonald RW, O'Brien M, Schöne BR, Siferd T (2011) Hydrographic changes in Nares Strait (Canadian Arctic archipelago) in recent decades based on  $\delta^{18}\text{O}$  profiles of bivalve shells. *Arctic* 64:45–58
- Ullmann CV, Wiechert U, Korte C (2010) Oxygen isotope fluctuations in a modern North Sea oyster (*Crassostrea gigas*) compared with annual variations in seawater temperature: implications for palaeoclimate studies. *Chem Geol* 277:160–166
- Urey HC (1947) The thermodynamic properties of isotopic substances. *J Chem Soc*:562–581
- Vander Putten E, Dehairs F, Keppens E, Baeyens W (2000) High resolution distribution of trace elements in the calcite shell layer of modern *Mytilus edulis*: environmental and biological controls. *Geochim Cosmochim Acta* 64:997–1011
- Vander Zanden MJ, Rasmussen JB (2001) Variation in  $\delta^{15}\text{N}$  and  $\delta^{13}\text{C}$  trophic fractionation: implications for aquatic food web studies. *Limnol Oceanogr* 46:2061–2066
- Vanhaeren M, D'Errico F, Stringer C, James SL, Todd JA, Mienis HK (2006) Middle Paleolithic shell beads in Israel and Algeria. *Science* 312:1785–1788
- Versteegh EAA, Gillikin DP, Dehairs F (2011) Analysis of  $\delta^{15}\text{N}$  values in mollusk shell organic matrix by elemental analysis/isotope ratio mass spectrometry without acidification: an evaluation and effects of long-term preservation. *Rapid Commun Mass Spectrom* 25:675–680
- Versteegh EAA, Blicher ME, Mortensen J, Rysgaard S, Als TD, Wanamaker AD Jr (2012) Oxygen isotope ratios in the shell of *Mytilus edulis*: archives of glacier meltwater in Greenland? *Biogeosciences* 9:5231–5241
- Vonhof HB, Wesselingh FP, Ganssen GM (1998) Reconstruction of the Miocene western Amazonian aquatic system using molluscan isotopic signatures. *Palaeogeogr Palaeoclimatol Palaeoecol* 141:85–93
- Wanamaker AD Jr, Kreutz KJ, Borns HW, Introne DS, Feindel S, Funder S, Rawson PD, Barber BJ (2007) Experimental determination of salinity, temperature, growth, and metabolic effects on shell isotope chemistry of *Mytilus edulis* collected from Maine and Greenland. *Paleoceanography* 22:PA2217
- Wanamaker AD Jr, Kreutz KJ, Schöne BR, Pettigrew N, Borns HW, Introne DS, Belknap D, Maasch KA, Feindel S (2008) Coupled North Atlantic slope water forcing on gulf of Maine temperatures over the past millennium. *Clim Dyn* 31:183–194
- Wanamaker AD Jr, Kreutz KJ, Schöne BR, Maasch KA, Pershing AJ, Borns HW, Introne DS, Feindel S (2009) A late Holocene paleo-productivity record in the western gulf of Maine, USA, inferred from growth histories of the long-lived ocean quahog (*Arctica islandica*). *Int J Earth Sci* 98:19–29
- Wanamaker AD Jr, Kreutz KJ, Schöne BR, Introne DS (2011) Gulf of Maine shells reveal changes in seawater temperature seasonality during the Medieval Climate Anomaly and the Little Ice Age. *Palaeogeogr Palaeoclimatol Palaeoecol* 302:43–51
- Wanamaker AD Jr, Butler PG, Scourse JD, Heinemeier J, Eiriksson J, Knudsen KL, Richardson CA (2012) Surface changes in the North Atlantic meridional overturning circulation during the last millennium. *Nat Commun* 3:899–899
- Waselkov GA (1987) Shellfish gathering and shell midden archaeology. In: Schiffer MB (ed) *Advances in archaeological method and theory*. Academic, New York
- Watanabe S, Kodama M, Fukuda M (2009) Nitrogen stable isotope ratio in the manila clam, *Ruditapes philippinarum*, reflects eutrophication levels in tidal flats. *Mar Pollut Bull* 58:1447–1453
- Weaver AJ, Sedlacek J, Eby M, Alexander K, Crespín E, Fichet T, Philippon-Berthier G, Joos F, Kawamiya M, Matsumoto K, Steinacher M, Tachiiri K, Tokos K, Yoshimori M, Zickfeld K

- (2012) Stability of the Atlantic meridional overturning circulation: a model intercomparison. *Geophys Res Lett* 39:L20709–L20709
- Wefer G, Berger WH (1991) Isotope paleontology – growth and composition of extant calcareous species. *Mar Geol* 100:207–248
- Welsh K, Elliot M, Tudhope A, Ayling B, Chappell J (2011) Giant bivalves (*Tridacna gigas*) as recorders of ENSO variability. *Earth Planet Sci Lett* 307:266–270
- Widerlund A, Andersson PS (2006) Strontium isotopic composition of modern and Holocene mollusc shells as a palaeosalinity indicator for the Baltic Sea. *Chem Geol* 232:54–66
- Willis KJ, Bailey RM, Bhagwat SA, Birks HJB (2010) Biodiversity baselines, thresholds and resilience: testing predictions and assumptions using palaeoecological data. *Trends Ecol Evol* 25:583–591
- Wisshak M, Lopez Correa M, Gofas S, Salas C, Taviani M, Jakobsen J, Freiwald A (2009) Shell architecture, element composition, and stable isotope signature of the giant deep-sea oyster *Neopycnodonte zibrowii* sp. n. from the NE Atlantic. *Deep-Sea Res Part I-Oceanogr Res Pap* 56:374–407
- Witbaard R (1996) Growth variations in *Arctica islandica* L (Mollusca): a reflection of hydrography-related food supply. *ICES J Mar Sci* 53:981–987
- Witbaard R, Bergman MJN (2003) The distribution and population structure of the bivalve *Arctica islandica* L. in the North Sea: what possible factors are involved? *J Sea Res* 50:11–25
- Witbaard R, Jenness MI, Vanderborg K, Ganssen G (1994) Verification of annual growth increments in *Arctica islandica* L from the North-Sea by means of oxygen and carbon isotopes. *Neth J Sea Res* 33:91–101
- Witbaard R, Duineveld GCA, Dewilde P (1997) A long-term growth record derived from *Arctica islandica* (Mollusca, Bivalvia) from the Fladen Ground (northern North Sea). *J Mar Biol Assoc U K* 77:801–816
- Witbaard R, Jansma E, Klaassen US (2003) Copepods link quahog growth to climate. *J Sea Res* 50:77–83
- Yap CK, Ismail A, Tan SG, Rahim IA (2003) Can the shell of the green-lipped mussel *Perna viridis* from the west coast of Peninsular Malaysia be a potential biomonitoring material for Cd, Pb and Zn? *Estuar Coast Shelf Sci* 57:623–630
- Zilhao J, Angelucci DE, Badal-Garcia E, D’Errico F, Daniel F, Dayet L, Douka K, Higham TFG, Jose Martinez-Sanchez M, Montes-Bernardez R, Murcia-Mascaros S, Perez-Sirvent C, Roldan-Garcia C, Vanhaeren M, Villaverde V, Wood R, Zapata J (2010) Symbolic use of marine shells and mineral pigments by Iberian Neandertals. *Proc Natl Acad Sci U S A* 107:1023–1028

**Open Access** This chapter is licensed under the terms of the Creative Commons Attribution 4.0 International License (<http://creativecommons.org/licenses/by/4.0/>), which permits use, sharing, adaptation, distribution and reproduction in any medium or format, as long as you give appropriate credit to the original author(s) and the source, provide a link to the Creative Commons license and indicate if changes were made.

The images or other third party material in this chapter are included in the chapter’s Creative Commons license, unless indicated otherwise in a credit line to the material. If material is not included in the chapter’s Creative Commons license and your intended use is not permitted by statutory regulation or exceeds the permitted use, you will need to obtain permission directly from the copyright holder.

