

Development of a Small Hydropower Plant: Case of Ikere Gorge Dam, Oyo State, Nigeria

Moradeyo K. Odunfa^{1*}, Timiepiri C. Saudu¹, Temitayo E. Oladimeji²

¹Mechanical Engineering Department, University of Ibadan, Ibadan, Nigeria

²Chemical Engineering Department, Covenant University, Ota, Nigeria

Email: *m.odunfa@mail.ui.edu.ng, *1stclem@gmail.com

How to cite this paper: Odunfa, M.K., Saudu, T.C. and Oladimeji, T.E. (2019) Development of a Small Hydropower Plant: Case of Ikere Gorge Dam, Oyo State, Nigeria. *Journal of Power and Energy Engineering*, 7, 31-45.

<https://doi.org/10.4236/jpee.2019.73003>

Received: March 29, 2018

Accepted: March 26, 2019

Published: March 29, 2019

Copyright © 2019 by author(s) and Scientific Research Publishing Inc. This work is licensed under the Creative Commons Attribution International License (CC BY 4.0).

<http://creativecommons.org/licenses/by/4.0/>



Open Access

Abstract

Energy crisis and environmental safety has become a thing of global concern, Nigeria inclusive. This is due to the increasing energy prices and environmental impact. Energy generated from the non-renewable energy sources has been linked up with this energy crisis and non-friendly environment. Research is therefore been geared towards harnessing renewable energy resources as alternative sources of energy generation. Renewable energy sources such as hydropower, wind, geothermal and solar just to mention a few are environmentally friendly. This study therefore aims at exploring renewable energy sources and thus designing a small hydropower plant using Ikere gorge Dam as case study. A survey was conducted through personal interview and probing of previous records of the site. Basic parameters such as flow rate of 31.8 m³/s and a head of 30 m were obtained. These parameters were used together with the standard equations for the design of the small hydropower plant. Costing analysis of the plant was carried out in order to estimate the cost of the plant. The comparative analysis of the renewable and non-renewable energy sources was also carried out. The theoretical power obtained for small hydropower project is 9.36 MW. The initial cost of the project is estimated at N63,343,970 with an estimated annual maintenance cost of N500,000. The annual energy output is 3.6 × 10⁷ kWh and the project has estimated annual revenue of N579,960,000. When compared with other renewable energy sources, the cost of small hydropower plant is low and when compared with dwindling oil prices and environmental effects of non-renewable energy sources, small hydropower stands second to none. The study established that Ikere gorge Dam is a feasible site for a small hydropower plant and a small hydropower plant has also been designed; hence small hydropower plant is therefore recommended.

Keywords

Renewable Energy, Non-Renewable Energy, Environmental Safety, Ikere Gorge

1. Introduction

Energy conversion and power generation has been a paramount and ever-evolving activity of man for several centuries. From simple wind-powered threshing mills, to coal-powered steam engines, power generation from natural gas, oil, renewable energy sources, and in recent time nuclear energy, man has constantly tried to improve. For developed countries, emphasis is laid on transition from non-renewable sources of energy to renewable sources with the aim of taming greenhouse effect and depletion of the ozone layer. For developing countries, such as Nigeria, it is a different ball game all together. Enough power is not being generated, let alone talks of transition. According to the Presidential Task Force on Power, “Nigerians are among the people most deprived of grid-based electricity in the world with a per capital consumption that is far lower than many other African countries”. Nigeria currently has the capacity to generate about 6000 megawatts of electricity of which only 3600 is being generated for a populace of over 160 million.

What this means is that about 22.8 Watts of electricity is produced for each Nigerian per capita. For all things being equal, Nigeria has the capacity to generate enough power to meet the power consumption needs of the populace. Small hydropower (SHP) is a proven technology that can stand-alone, being connected to an isolated grid, or the national grid. In most cases, it is often combined with irrigation systems. One of the major industrial problems in Nigeria is power generation. Sufficient power is not being generated to cater for industry needs, as well as the needs of the populace. Nigeria has the capacity to produce enough power to cater for the needs to industries and the populace at large. Aside being blessed with crude oil, solid minerals, and workforce, Nigeria is blessed with sufficient water bodies. While power from gas, steam, and coal is prevalent, the adverse effect of their usage cannot be overruled. Hydropower can contribute immensely in tackling the power situation in Nigeria. The bottom line is that SHP can adequately contribute to the electricity needs of Nigeria. Statistics prove that Nigeria is blessed with enough water bodies that can contribute substantially to power generation output. The exploitable hydropower potential in Nigeria is conservatively estimated to be about 10,000 MW [1] and only about 19% is currently been tapped or developed. The hydropower potential in Nigeria accounts for about 29% of the total electrical supply [2]. As at 2005, Nigeria had the capacity to produce 734.2 MW of electricity from SHP, but only 30 MW was being produced, which is less than 5% of what can be produced [3]. This work therefore aims at adding to the repertoire of knowledge and specifically designed small hydropower plant capable of supplying electricity for a small community using Ikere water gorge in Nigeria as a case study. Electricity generation is closely tied to economic, industrial and educational development. About 1.7 billion people do not have access to electricity [4]. If the issue of electricity is properly and effectively handled, there's bound to be productivity in every aspect of the economy. If every community can handle its own power needs, the power supply

from the national grid can be directed to major cities. Small hydropower has grown to become accepted as an inexpensive, easy to develop, and environmentally friendly source of energy. All of these benefits have increased the value of SHP options and have pioneered recent trends in renewable energy generation [5]. Hydropower is power or energy gotten from water. Flowing water at an elevation possesses the two forms of mechanical energy: potential and kinetic energies. Hydropower has long been harnessed prior to the widespread availability of commercial electric power. Over 2000 years ago, the Greeks used water wheels to grind wheat to flow [6] (US Department of Energy, 2008). Other ancient uses included irrigation, operation of textile machines, watermills, and sawmills. The concept of hydro-electricity became wide spread in the late 19th century with the coupling of waterwheels with electrical generators. As at the dawn of the 20th century, many towns, industries, and cities located near rivers had harnessed hydropower. In a country like the United States, as at 1920, about 40% of the power produced was from hydropower. This wide spread popularity gave hydropower the nickname “white coal” [7]. At the early stages of the development of hydropower plants, they were relatively more reliable and efficient than fossil fuel-powered plants [8]. This can be held accountable for the proliferation of small and medium-sized hydropower plants wherever there was sufficient moving water and a need for electricity. As the population of the world increased, the demand for electricity grew, leading to an increased number and size of fossil fuel, hydropower, and even nuclear power plants. In recent years due to the size of hydropower plants, associated dams and reservoirs have been developed with additional uses such as irrigation, recreation, navigation, flood control, and water supply. Conversely, hydropower plants have been incorporated to dams that were originally built for irrigation, water supply, and flood control. Despite the seemingly high potential of hydropower, it accounts for about 16.3% of the world’s electricity, which is lesser than power generated from fossil fuels. Fossil fuel plants account for about 67.2% of the world’s electricity. However, power generated from hydro is higher than nuclear, wind, solar, geothermal, and other sources of power combined [9]. Concerns about the environment and social impact of using fossil fuels have considerably increased in the last decades. These concerns have lead to increased campaigns on shifting towards greener and more environmental energy source. As earlier stated hydropower provides the largest share of renewable electricity worldwide and still has enormous potential for future development. As at today, hydropower plants span from few Watts to several Gigawatts. The largest projects are Itaipu in Brazil (14,000 MW) and Three Gorges in China (22,400 MW).

2. Mechanism of Hydropower

The definition of small hydropower varies from country to country, as there is no internationally accepted value. In a country like Sweden, the limit is 1.5 MW, in India 15 MW, and in China, small hydropower encompasses capacities up to

25 MW. However, 10 MW is generally accepted as the threshold for small hydropower by European Small Hydropower Association, European Commission, and International Union of Producers and Distributors of Electricity [10]. Small hydropower projects can be further broken down as; mini, micro, and pico hydropower depending on the installed capacity. These limits are 1 MW, 100 kW, and 16 kW for mini, micro, and pico hydropower, respectively [11]. **Table 1** shows hydropower definitions according to ECOWAS.

The 30 MW limit for small hydropower was because all the projects in the considered region were added up (ECREEE, 2012).

2.1. Advantages and Disadvantages of Small Hydropower Plant

[10] stated that “SHP meets the needs of the present without compromising the ability of future generations to meet their own needs.” What this means is that small hydropower is sustainable. When compared with other sources of power, small hydropower ranks amongst the cheapest. Aside the fact that SHP has high untapped potential, especially in developing countries, its technology is open to new technological developments. Another major advantage is its flexibility and reliability, as well as its independence on the fuel costs. It has fast start up and shutdown response time [12]. According to [13], “one GWh of electricity produced by small hydropower means a reduction of 480 tonnes of emitted carbon dioxide”. What this implies is that, when compared with other sources of electricity, small hydropower is very much environmental friendly. In addition, small hydropower schemes have long life spans and after building and installations, the associated cost and frequency of maintenance are minimal [14]. Small hydropower plants however do not come without disadvantages. One of such disadvantage is the effect of small hydropower schemes on fishes. Weir and intake structures disrupt the movement of fishes. There is also the possibility of fishes being killed by the turbine blades or gas bubbles from supersaturated water. Another disadvantage is variation in energy production due to seasonal variations in flow. Unlike other sources which have more stable and fixed electricity generation capacity, variations in flow (during low flow seasons) limit electricity generation [14].

Table 1. Definition of hydropower.

Terms		Power Output
Pico Hydropower	Small Scale Hydropower “SSH”	<5 kW
Micro Hydropower		5 kW - 100 kW
Mini Hydropower “MHP”		100 kW - 1000 kW (1 MW)
Small Hydropower “SHP”		1 MW - 30 MW
Medium Hydropower		30 MW - 100 MW
Large Hydropower “LHP”		>100 MW

2.1.1. Small Hydropower in the World

Small hydropower contributes immensely to the worlds' renewable energy sources because it is cheap and provides clean energy. **Table 2** shows the global contribution of each renewable energy source.

Going by the definition of small hydropower being between 1 MW - 10 MW, as at 2004, the total globally installed small hydropower plants produced about 48 Gigawatts (GW), as shown in **Table 3**. China is one of the worlds' largest users of small hydropower. As at 2005, China had reached a power production capacity of 31,200 MW which accounts for more than half of what is being produced worldwide [11]. Despite this promising figure, there are still several untapped small hydropower potential in several countries and continents, especially in Africa and Asia. In Canada moves have been made to replace diesel generators by SHP in remote, off-grid regions [10] (**Figure 1**).

2.1.2. Small Hydropower in Nigeria

As stated in preceding sections, economic development of a country is closely tied to its ability to provide enough power to cater for the domestic and industrial needs of the populace. In Nigeria however, the demand for power far

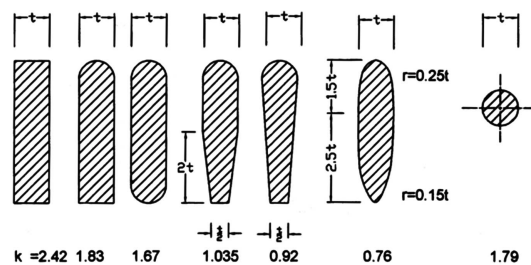


Figure 1. Value of K for different bar shapes (BIS, 2012).

Table 2. Global contribution by each renewable energy source [12].

Energy Source	Percentage
Large hydro (>10 MW)	86%
Small hydro (<10 MW)	8.3%
Wind and solar	0.6%
Geothermal	1.6%
Biomass	3.5%

Table 3. Installed SHP (<10 MW) capacity by world region in 2004 [11].

Region	Capacity (MW)	Percentage (%)
Asia	32,641	68.0
Europe	10,723	22.3
North America	2929	6.1
South America	1280	2.7
Africa	228	0.5
Australasia	198	0.4

outstrips the power being generated and supplied. Nigeria has numerous potential sites for SHP. Harnessing these options will go a long way in changing the power production level in Nigeria. Between 2003 and 2007, Nigeria experienced a growth in hydropower of 9.7% [15]. As at 2005, although Nigeria had the capacity to produce 734.2 MW of electricity from SHP, only 30 MW was being produced, which is less than 5% of what can be produced [3] (ECN-UNDP RE Master Plan, 2005). Owing to the fact that most Nigerian communities have SHP potentials, power generated from SHP projects can be used to supply electricity for lighting, information and communications technology, and processing of agricultural produce. The underlying assumption is that these SHP projects can sufficiently provide power for rural communities, while feeding the excess to the national grid. According to the National Agency for Science and Engineering Infrastructure (NASeni) SHP capacity in Nigeria can reach 3500 MW, accounting for about 23% of the country's entire hydropower capacity [16]. **Table 4** [17] reveals potential sites for SHP projects in Nigeria.

3. Data, Equations and Calculation

Results were obtained using the standard hydropower equations with the data obtained from the site (Ikere gorge Dam) coupled with some other fundamental fluid property values [18]. The Aerial view of Ikere gorge dam site using Google maps is as shown in **Figure 2** and **Figure 3**. The analysis done to obtain the results is as follows.

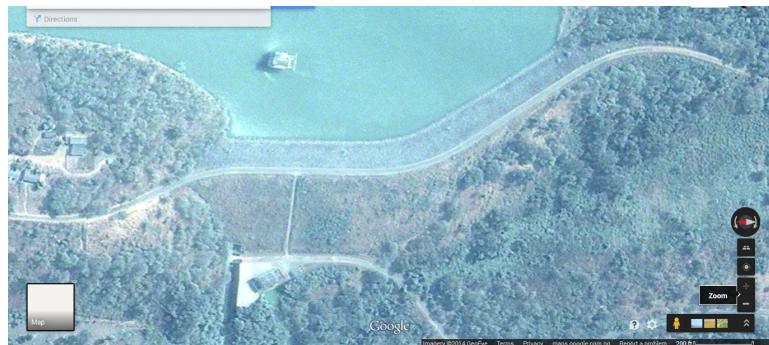


Figure 2. Aerial view of Ikere gorge dam using Google maps.

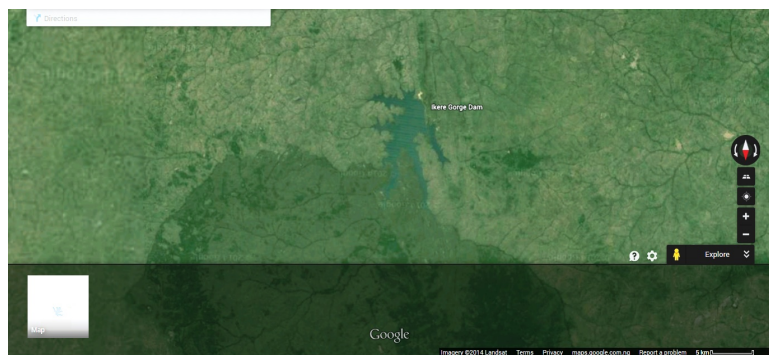


Figure 3. Aerial view of Ikere gorge dam using Google maps.

Table 4. Summary of small hydropower potential sites in Nigeria [17].

State	Potential Sites	Estimated output
Adamawa	3	28.600
Akwa Ibom	13	
Bauchi	1	0.150
Benue	10	1.306 (one site)
Cross River	5	3.0
Delta	1	1.0
Ebonyi	5	1.3999
Edo	5	3.828
Ekiti	6	1.2472
Enugu	1	
FCT	6	
Gombe	2	35.099
Imo	71	
Kaduna	15	25.0
Kano	2	14.0
Katsina	11	234.34
Kebbi	1	
Kogi	2	1.055
Kwara	4	5.2
Nassarawa	3	0.454
Niger	11	110.580
Ogun	13	115.610
Ondo	1	1.3
Osun	8	2.622
Oyo	3	1.062
Plateau	14	89.1
Sokoto	1	
Taraba	9	134.720
Yobe	5	
Zamfara	16	

Theoretical Power (P_{th})

The theoretical power is the maximum power that can be generated from the hydropower project. The assumption is that the efficiency of the system is 100%, as well as no head losses.

The theoretical power is calculated using equation below

$$P_{th} = \eta \rho g Q H$$

$$\begin{aligned}\eta &= 1 \\ \rho &= 1000 \text{ kg/m}^3 \\ g &= 9.81 \text{ m/s}^2 \\ Q &= 31.8 \text{ m}^3/\text{s} \\ H &= 30 \text{ m} \\ \text{Therefore,}\end{aligned}$$

$$P_{th} = 1 \times 1000 \times 9.81 \times 31.8 \times 30 = 9.36 \text{ MW}$$

Penstock

Penstock Diameter (D)

Selection of the diameter size of a penstock is interplay between limiting head losses and reducing the cost of the penstock. The head losses decrease as the penstock diameter increases. On the contrary, the cost of penstock increases with an increase in diameter.

The penstock diameter is calculated such that the overall head loss is limited to 4%. This is given by Equation (3.3) as.

$$D = 2.69 \left(\frac{n^2 Q^2 L}{H_{gross}} \right)^{0.1875}$$

$$\begin{aligned}n &= 0.009 \text{ for PVC} \\ Q &= 31.8 \text{ m}^3/\text{s} \\ L &= 100 \text{ m} \\ H_{gross} &= 30 \text{ m}\end{aligned}$$

$$D = 2.69 \left(\frac{0.009^2 \times 31.8^2 \times 100}{30} \right)^{0.1875} = 2.1 \text{ m}$$

When the head losses—loss at intake, loss at trash rack, frictional losses, losses through bends, and loss at gate valve were calculated using this value (2.1 m), it was discovered that the total head losses exceeding the acceptable range limit of 4%. Different values of D were computed—2.1 m, 2.2 m, 2.3 m, 2.4 m, 2.5 m, and 2.6 m. At 2.6 m, the total head loss was within the limit of 4%.

Hence, $D = 2.6 \text{ m}$

Minimum Thickness (t_{min})

$$t_{min} = 2.5D + 1.2 = 2.5 \times 2.6 + 1.2 = 7.7 \text{ mm}$$

A supplier recommended 15mm, hence the choice for a penstock thickness of 15 mm.

Velocity in Penstock (V)

$$\begin{aligned}V &= Q/A \\ Q &= 31.8 \text{ m}^3/\text{s} \\ A &= 3.142 \times 2.6^2/4 = 5.31 \text{ m}^2\end{aligned}$$

$$V = \frac{31.8}{5.31} = 5.99 \text{ m}^{-3}$$

Head Loss at Intake (h_i)

$$h_i = \frac{kV^2}{2g}$$

K is a constant and is given as 0.04 for this design

$$V = 5.99 \text{ m/s}$$

$$g = 9.81 \text{ m/s}^2$$

$$h_i = \frac{0.04 \times 5.99^2}{2 \times 9.81} = 0.073 \text{ m}$$

Frictional Loss (h_f)

The frictional loss is given by equation

$$\frac{h_f}{L} = 10.3 \frac{n^2 Q^2}{D^{5.333}}$$

$$L = 100 \text{ m}$$

$$n = 0.009$$

$$Q = 31.8 \text{ m}^3/\text{s}$$

$$D = 2.6 \text{ m}$$

$$h_f = 10.3 \frac{0.009^2 \times 31.8^2 \times 100}{2.6^{5.333}} = 0.517 \text{ m}$$

Head Loss at Bend (h_b)

$$h_b = \frac{K_b V^2}{2g}$$

K_b is a constant and is given as 0.085 for this design

$$V = 5.99 \text{ m/s}$$

$$g = 9.81 \text{ m/s}^2$$

$$h_b = \frac{0.085 \times 5.99^2}{2 \times 9.81} = 0.155 \text{ m}$$

Loss at Gate Valve (h_v)

$$h_v = \frac{K_v V^2}{2g}$$

K_v is a constant and is given as 0.15 for fully opened gate valve

$$h_v = \frac{0.15 \times 5.99^2}{2 \times 9.81} = 0.274 \text{ m}$$

Pressure Wave Velocity (c)

The surge pressure wave velocity is given by Equation (3.8)

$$c = \sqrt{\frac{10^{-3} K}{1 + \frac{KD}{Et}}}$$

$$K = 2.1 \times 10^9 \text{ N/s}^2$$

$$E = 2.75 \times 10^9 \text{ N/m}^2$$

$$D = 2600 \text{ mm}$$

$$t = 15 \text{ mm}$$

$$c = \sqrt{1 + \frac{2.1 \times 10^6}{2.75 \times 10^9 \times 15}} = 125.49 \text{ m/s}$$

Critical Time (T)

$$T = \frac{2L}{c}$$

$$P_s = \frac{2 \times 100}{125.49} = 1.59 \text{ seconds}$$

Surge Pressure in Penstock (p_s)

The surge pressure is given as:

$$P_s = \frac{4c}{9.8}$$

$$P_s = \frac{4 \times 125.49}{9.8} = 51.22 \text{ m}$$

Trash Rack**Surface Area (S)**

The surface area of the trash rack is as given below:

$$S = \frac{1}{K_1} \left(\frac{b+a}{a} \right) \frac{Q}{V_0 \sin \alpha}$$

$K_1 = 0.85$ for an automatic raker

$b = 70 \text{ mm}$

$a = 60 \text{ mm}$

The approach velocity, V_0 is limited to 1.5 m/s since there are plans to make use of mechanical raking system.

$\alpha = 60^\circ$

$$S = \frac{1}{0.85} \left(\frac{70+60}{60} \right) \frac{31.8}{1.5 \sin 60} = 62 \text{ m}^2$$

Head Loss through Trash Rack (h_t)

$$h_t = K_s \left[\frac{t_b}{b} \right]^{\frac{4}{3}} \times \frac{v_0^2}{2g} \sin \alpha$$

$K_s = 1.67$ for flat bar with rounded ends as seen in **Figure 1**

$t_b = 12 \text{ mm}$

$$h_t = 1.67 \times \left[\frac{12}{60} \right]^{\frac{4}{3}} \times \frac{1.5^2}{2 \times 9.81} \sin 60 = 0.019 \text{ m}$$

Turbine

Net Head = Gross Head – Losses

$$= 30 - (0.073 + 0.517 + 0.155 + 0.274 + 0.019)$$

$$= 28.96 \text{ m}$$

Power Output (p)

The power output the turbine is given as (P)

$$P = \eta \rho g Q H_n$$

$$\eta = 0.9$$

$$\rho = 1000 \text{ kg/m}^3$$

$$g = 9.81 \text{ m/s}^2$$

$$Q = 31.8 \text{ m}^3/\text{s}$$

$$H_n = 28.86 \text{ m}$$

$$P = 0.9 \times 1000 \times 9.81 \times 31.8 \times 28.96 = 8.13 \text{ MW}$$

Specific Speed (n_{QE})

The rotational speed of a Kaplan turbine is given by equation

$$n_{QE} = \frac{2.294}{H_n^{0.486}}$$

$$n_{QE} = \frac{2.294}{28.86^{0.486}} = 0.5 \text{ s}^{-1}$$

Rotational Speed (n)

The rotational speed is calculated from equation below

$$n_{QE} = \frac{n \sqrt[3]{Q}}{E^4}$$

$$E = H_n \times g = 28.96 \times 9.81 = 284.09 \text{ m}^2/\text{s}^2$$

$$n = \frac{n_{QE} E^4}{\sqrt[3]{Q}} = \frac{0.5 \times 284.09^4}{\sqrt[3]{31.8}} = 6.1 \text{ s}^{-1}$$

Runway Maximum Speed

The runway maximum speed for a Kaplan turbine is given as:

$$3.2 \times n = 3.2 \times 6.1 = 19.52 \text{ s}^{-1}$$

Runner diameter (D_e)

$$D_e = 84.5 \left(0.79 + 1.602 n_{QE} \right) \frac{\sqrt{H_n}}{60n}$$

$$D_e = 84.5 \left(0.79 + 1.602 \times 0.5 \right) \frac{\sqrt{28.96}}{60 \times 6.1} = 1.98 \text{ m}$$

Hub diameter (D_i)

$$D_i = \left(0.25 + \frac{0.0951}{n_{QE}} \right) D_e$$

$$D_i = \left(0.25 + \frac{0.0951}{0.5} \right) \times 1.98 = 0.87 \text{ m}$$

Cavitation coefficient (σ)

$$\sigma = 1.541 \times n_{QE}^{1.46} + \frac{v^2}{2gH_n}$$

$$\sigma = 1.541 \times 0.5^{1.46} + \frac{5.99^2}{2 \times 9.81 \times 28.96} = 0.623$$

Suction head (H_s)

$$H_s = \frac{P_{atm} - P_v}{\rho g} + \frac{v^2}{2g} - \sigma H_n$$

$$P_{atm} = 98,000 \text{ Pa}$$

$$P_v = 3493.04 \text{ Pa}$$

$$H_s = \frac{98000 - 3493.04}{1000 \times 9.81} + \frac{5.99^2}{2 \times 9.81} - 0.623 \times 28.96 = -6.577 \text{ m}$$

4. Cost Analysis

Cost analysis was carried out using the fundamental equations [19].

Annual Energy Output (E)

The annual energy output is given as a function of

$$E = f(Q_{\text{median}}, H_n, \eta_{\text{turbine}}, \eta_{\text{generator}}, \eta_{\text{gearbox}}, \eta_{\text{transformer}}, \gamma, h)$$

where;

Q_{median} = flow in m^3/s for incremental steps on the flow duration curve

H_n = Specific net head

η_{turbine} = turbine efficiency

$\eta_{\text{generator}}$ = generator efficiency

η_{gearbox} = gearbox efficiency

$\eta_{\text{transformer}}$ = transformer efficiency

γ = specific weight of water

h = number of hours in a year

Annual Energy Generation

The annual energy generation is given as:

Annual Energy Yield (kWh) = capacity factor \times Power (kW) \times Hours in a day \times Days in a year

Annual Energy Yield (kWh) = $0.5 \times 8130 \text{ kW} \times 24 \text{ hours} \times 365 \text{ days} = 3.6 \times 10^7 \text{ kWh}$

The current rate of electricity in Nigeria is ₦ 16.11 per kWh.

Hence, Annual generated revenue = Annual Energy Yield \times Rate

$$= 3.6 \times 10^7 \times 16.11$$

$$= \text{₦ } 579,960,000$$

5. Results

Design Head, H: 30 m

Flow Rate, Q: $31.8 \text{ m}^3/\text{s}$

Theoretical Power, P_{th} : 9.36 MW

5.1. Penstock Design

Material: Polyvinyl Chloride Pipe
 Length, L : 100 m
 Diameter, D : 2.6 m
 Minimum thickness, t_{\min} : 7.7 mm
 Penstock thickness, t : 15 mm
 Velocity in Penstock, V : 5.99 m/s
 Head loss at penstock inlet, h_f : 0.073 m
 Frictional loss in penstock, h_f : 0.517 m
 Head loss at bends, h_b : 0.155 m
 Loss at gate valve, h_v : 0.274 m
 Pressure wave velocity, c : 125.49 m/s
 Critical time, T : 1.59 sec
 Surge pressure in penstock, P_s : 51.22 m

5.1.1. Trash Rack

Configuration: Type 1
 Approach velocity to trash rack, V_0 : 1.5 m/s
 Inclination to the horizontal, α : 60°
 Bar Spacing, b : 70 mm
 Bar thickness, t_b : 12 mm
 Bar width, a : 60 mm
 Total surface area, S : 62 m²
 Head loss through trash rack, h_t : 0.015 m

5.1.2. Turbine

Selected turbine: Kaplan
 Power output: 8.13 MW
 Rotational speed: 6.1 s⁻¹
 Specific speed: 0.5
 Runway Maximum Speed: 19.52 s⁻¹
 Runner diameter: 1.98 m
 Hub diameter: 0.87 m
 Cavitation coefficient: 0.623 Suction head: -6.577 m

5.1.3. Estimated Cost

Preparation of Site: ₦ 2,000,000
 Civil Works: 6,000,000
 Penstock: ₦ 15,660,000
 Control System: ₦ 500,000
 Turbine: ₦ 8,439,000
 Generator: ₦ 4,000,000
 Exciter: ₦ 3,700,000
 Protection System: ₦ 700,000
 DC Emergency Supply: ₦ 1,000,000

Transformer: ₦ 15,000,000
Installation: ₦ 4,500,000
Total Cost: ₦ 61,499,000
Miscellaneous/Unforeseen expenses: 3%
= ₦ 1,844,970
Total Cost: ₦ 63,343,970

5.1.4. Annual Revenue

The annual revenue is defined as the gross average annual energy output multiplied by the estimated cost of energy per kilowatt (kw/hr) minus the cost incurred as a result of downtime. Downtime is any period the SHP is not functioning either due to maintenance reasons or shortage of water.

Annual Energy Output: 3.6×10^7 Kilowatt hour

Estimated Annual Revenue: ₦ 579,960,000

Estimated Yearly Cost of Maintenance: ₦ 500,000

6. Conclusions and Recommendations

In conclusion, this work has been able to establish that Ikere gorge Dam in Nigeria is a feasible site for a small hydropower plant. Small hydropower plant capable of supplying electricity for a small community using the gorge as a case study has also been designed. Estimated power generation capacity of the designed SHP is 9.36 MW. While the estimated total cost of the plant is ₦ 63,343,970, the plant annual deliverable expected revenue estimated is ₦ 579,960,000 with annual power yield of 3.6×10^7 kWh/yr.

Recommendations

It is clear that adoption of small hydropower schemes is a viable source towards increasing the power generation capacity of Nigeria. However, the underdevelopment in small hydropower is tilted towards certain governmental policies and their implementation than towards the unavailability of the technology. As a result, the following recommendations are made with regards to small hydropower. In order to reduce the overall cost of purchasing SHP components, local manufacturing capacity needs to be sorted after, encouraged and tested. Deregulation in the upstream and downstream sectors, such as private investors, are encouraged to invest in power generation.

Conflicts of Interest

The authors declare no conflicts of interest regarding the publication of this paper.

References

- [1] Ikuponisi, F.S. (2004) Status of Renewable Energy in Nigeria. A Background Brief for an International Conference on Making Renewable Energy a Reality.
- [2] Sambo, A.S. (2005) Renewable Energy for Rural Development. The Nigerian Perspective.

- [3] ECN-UNDP RE Master Plan (2005) International Workshop on Renewable Energy Master Plan.
- [4] Laguna, M., Upadhyay, D. and Taylor, S. (2006) Renewable Energy World. Small Hydro Flowing to the East, January-February.
- [5] Adigüzel, F. and Tutus, A. (2002) Small Hydroelectric Power Plants in Turkey. Paper Presented in HYDRO: Development, Management, Performance, Kiris, Antalya, 283-293.
- [6] US Department of Energy (2008) Annual FOIA Report.
<https://www.energy.gov/management/.../us>
- [7] Hydropower Roadmap (2012)
<https://www.scripd.com/document/166086912/2012-Hydropower-Roadmap>
- [8] Baird, S. (2006) The Future of Electricity. *Electricity Today*, **18**, 9-11.
- [9] International Energy Agency. (2012) Technology Roadmap: Hydropower.
- [10] Linsley, R.K., Franzini, J.B., Freyberg, D.L. and Tchobanoglous, G. (1992) Water Resources Engineering. McGraw-Hill, Inc., Singapore.
- [11] Taylor, S., Upadhyay, D. and Laguna, M. (2006) Flowing to the East: Small Hydro in Developing Countries. *Renewable Energy World*, 126-131.
- [12] Dragu, C., Sels, T. and Belmans, R. (2001) Small Hydropower State of the Art and Applications. *International Conference Power Generation and Sustainable Development*, Liege, July 2001, 265-270.
- [13] Pelikan, B., Papetti, L. and Laguna, M. (2006) Keeping It Clean Environmental Integration of Small Hydropower. *Renewable Energy World*, 74-79.
- [14] Paish, O. (2002) Small Hydro Power: Technology and Current Status. *Renewable and Sustainable Energy Reviews*, **6**, 537-556.
[https://doi.org/10.1016/S1364-0321\(02\)00006-0](https://doi.org/10.1016/S1364-0321(02)00006-0)
- [15] Sule, B.F. (2010) SHP Technology and Overview of SHP Potential in Nigeria, ECN Comprehensive Staff Induction, 2010.
- [16] NASENI. (2011) National Agency for Science and Engineering Infrastructure. *Nigerian Society of Engineering Journal*.
- [17] UNIDO. (2006) The Nigerian Capacity to Host the Regional Centre for SHP, UNIDO Regional Center for Small hydro Power, Abuja, Nigeria.
<http://www.smallhydroworld.org/countries/Nigeria/detail/?type=67425>
- [18] Kumar, A.T., Schei, A., Ahenkorah, R., Caceres Rodriguez, J.-M., Devernay, M., Freitas, D. and Hall, Å. (2011) Hydropower. IPCC Special Report on Renewable Energy sources and Climate Mitigation. Cambridge University Press, Cambridge, United Kingdom and New York, NY, USA.
- [19] Kadner, S., Zwickel, T., Eickemeier, P., Hansen, G., Schlömer, S. and von Stechow, C. (2011) Hydropower. IPCC Special Report on Renewable Energy Sources and Climate Mitigation. Cambridge University Press, Cambridge, United Kingdom and New York, NY, USA.