

Supplement of The Cryosphere, 14, 2173–2187, 2020
<https://doi.org/10.5194/tc-14-2173-2020-supplement>
© Author(s) 2020. This work is distributed under
the Creative Commons Attribution 4.0 License.



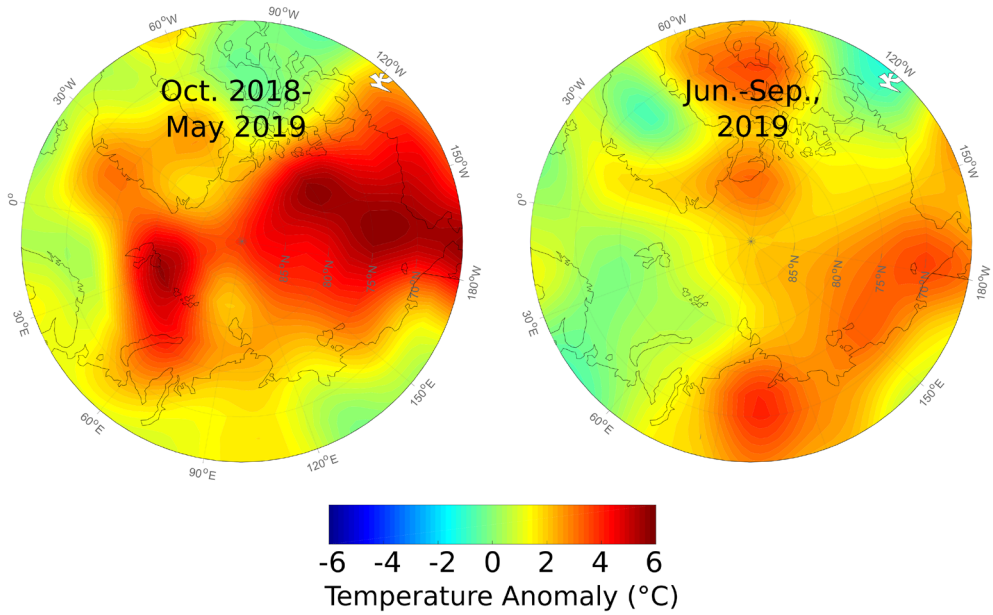
Supplement of

The MOSAiC ice floe: sediment-laden survivor from the Siberian shelf

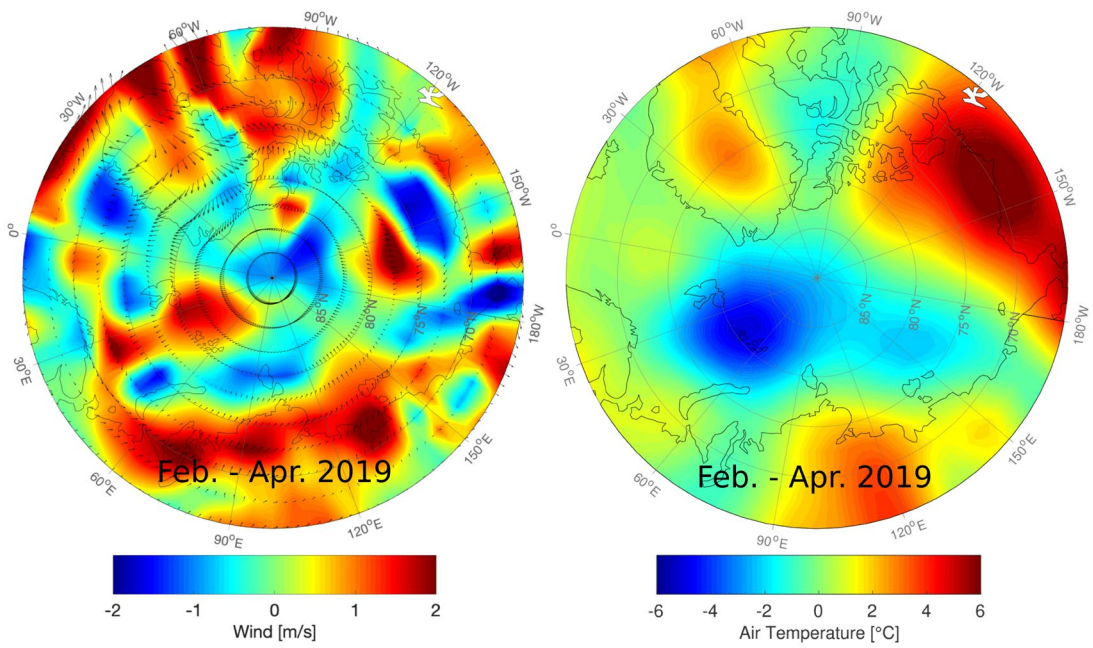
Thomas Krumpen et al.

Correspondence to: Thomas Krumpen (tkrumpen@awi.de)

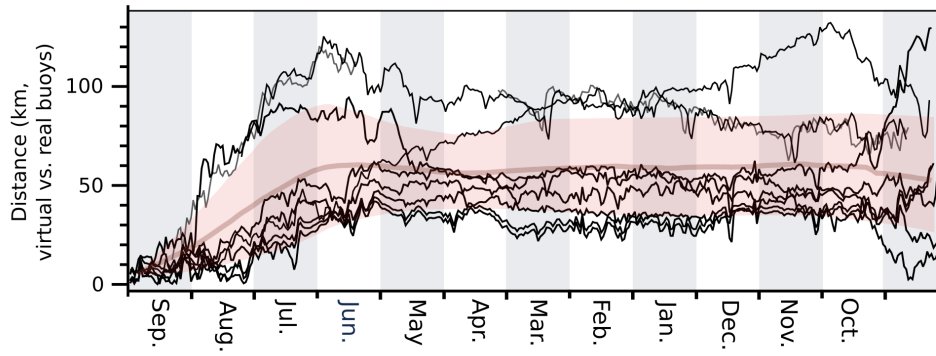
The copyright of individual parts of the supplement might differ from the CC BY 4.0 License.



5 **Figure S1:** left) October 2018 – May 2019 and right) June – September 2019 1000 hPa air temperature anomalies in °C in comparison to the 1981 - 2010 climatology (data source: www.esrl.noaa.gov/psd/products).



10 **Figure S2:** left) February – April 2019 wind velocity anomalies at 10 m height and right) February - April 2019 1000 hPa air temperature anomalies in comparison to the 2011 - 2018 (CryoSat-2 period) climatology (data source: www.esrl.noaa.gov/psd/products).



15

Figure S3: Results from backward tracking of buoy locations: Distance between 10 buoys (source: seaiceportal.de) deployed on sea ice in the Arctic Ocean between 2015 and 2018 and their reconstructed trajectories (virtual buoys).

20

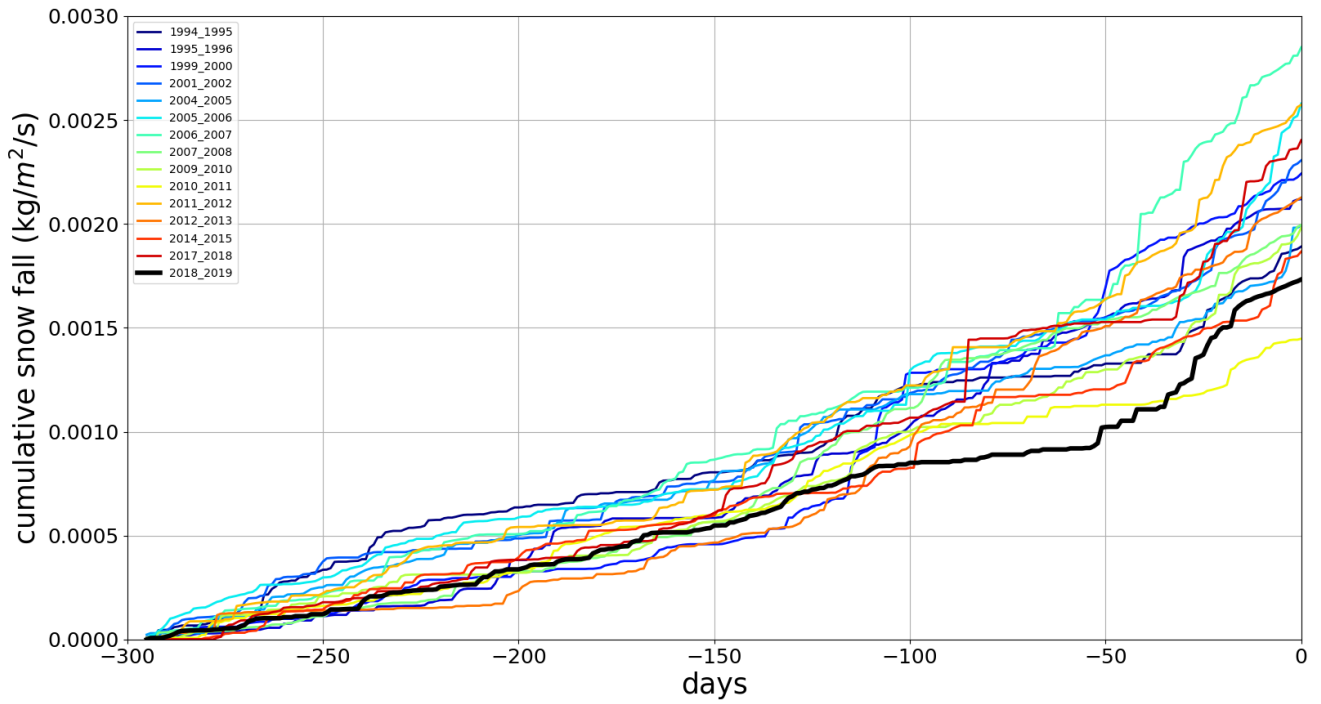


Figure S4: Snow accumulation along trajectories between 1994 – 2019 (FYI only, compare Fig. 7). Precipitation rates are obtained from NCEP reanalysis data.

25