

RESEARCH ARTICLE

High relatedness of invasive multi-drug resistant non-typhoidal *Salmonella* genotypes among patients and asymptomatic carriers in endemic informal settlements in Kenya

Samuel Kariuki^{1*}, Cecilia Mbae¹, Sandra Van Puyvelde^{2,3,4}, Robert Onsare¹, Susan Kawai¹, Celestine Wairimu¹, Ronald Ngetich¹, John Clemens⁵, Gordon Dougan⁶

1 Centre for Microbiology Research, Kenya Medical Research Institute, Nairobi, Kenya, **2** Department of Biomedical Sciences, Institute of Tropical Medicine, Antwerp, Belgium, **3** Laboratory of Medical Microbiology, Vaccine & Infectious Disease Institute, University of Antwerp, Antwerp, Belgium, **4** Parasites and Microbes, Wellcome Sanger Institute, Wellcome Genome Campus, Hinxton, Cambridge, United Kingdom, **5** Office of the Executive Director, International Diarrheal Diseases Research Centre, Dhaka, Bangladesh, **6** Cambridge Institute for Therapeutic Immunology & Infectious Disease, Department of Medicine, Cambridge University, Cambridge, United Kingdom

* Samkariuki2@gmail.com, skariuki@kemri.org



OPEN ACCESS

Citation: Kariuki S, Mbae C, Van Puyvelde S, Onsare R, Kawai S, Wairimu C, et al. (2020) High relatedness of invasive multi-drug resistant non-typhoidal *Salmonella* genotypes among patients and asymptomatic carriers in endemic informal settlements in Kenya. *PLoS Negl Trop Dis* 14(8): e0008440. <https://doi.org/10.1371/journal.pntd.0008440>

Editor: Abiola Senok, Mohammed Bin Rashid University of Medicine and Health Sciences, UNITED ARAB EMIRATES

Received: January 7, 2020

Accepted: June 2, 2020

Published: August 3, 2020

Copyright: © 2020 Kariuki et al. This is an open access article distributed under the terms of the [Creative Commons Attribution License](https://creativecommons.org/licenses/by/4.0/), which permits unrestricted use, distribution, and reproduction in any medium, provided the original author and source are credited.

Data Availability Statement: All relevant data are within the manuscript and its Supporting Information files.

Funding: Research reported in this publication was supported by the National Institute of Allergy and Infectious Diseases of the National Institutes of Health under Award Number R01AI099525 to S.K. and the Wellcome Trust. GD was supported by

Abstract

Invasive Non-typhoidal *Salmonella* (iNTS) disease is a major public health challenge, especially in Sub-Saharan Africa (SSA). In Kenya, mortality rates are high (20–25%) unless prompt treatment is instituted. The most common serotypes are *Salmonella enterica* serotype Typhimurium (*S. Typhimurium*) and *Salmonella enterica* serotype Enteritidis (*S. Enteritidis*). In a 5 year case-control study in children residing in the Mukuru informal settlement in Nairobi, Kenya, a total of 4201 blood cultures from suspected iNTS cases and 6326 fecal samples from age-matched controls were studied. From the laboratory cultures we obtained a total of 133 *S. Typhimurium* isolates of which 83(62.4%) came from cases (53 blood and 30 fecal) and 50(37.6%) from controls (fecal). A total of 120 *S. Enteritidis* consisted of 70 (58.3%) from cases (43 blood and 27 fecal) and 50(41.7%) from controls (fecal).

The *S. Typhimurium* population fell into two distinct ST19 lineages constituting 36.1%, as well as ST313 lineage I (27.8%) and ST313 lineage II (36.1%) isolates. The *S. Enteritidis* isolates fell into the global epidemic lineage (46.6%), the Central/Eastern African lineage (30.5%), a novel Kenyan-specific lineage (12.2%) and a phylogenetically outlier lineage (10.7%). Detailed phylogenetic analysis revealed a high level of relatedness between NTS from blood and stool originating from cases and controls, indicating a common source pool. Multidrug resistance was common throughout, with 8.5% of such isolates resistant to extended spectrum beta lactams. The high rate of asymptomatic carriage in the population is a concern for transmission to vulnerable individuals and this group could be targeted for vaccination if an iNTS vaccine becomes available.

TyVac (Gates) and the Cambridge NIHR BRC AMR Theme. The funders had no role in study design, data collection and analysis, decision to publish, or preparation of the manuscript.

Competing interests: The authors have declared that no competing interests exist.

Author summary

Blood-stream infections in young children in Sub-Saharan Africa cause high levels of morbidity and mortality. Non-typhoidal *Salmonella* (NTS) serovars Typhimurium and Enteritidis are especially important in causing blood-stream infections in Kenya. In this case-control study we examined a total of 4201 children with potential blood-stream infections and compared their NTS genotypes with those found in fecal samples of 6326 asymptomatic age-matched controls. From a phylogenetic analysis, we observed a high rate of carriage in cases and controls of multidrug resistant *Salmonella* genotypes with similarity to those causing invasive disease. We hypothesize that the high carriage rates in asymptomatic population may be contributing to maintenance and transmission of NTS disease among vulnerable population of children.

Introduction

Non-typhoidal *Salmonella* (NTS) disease is responsible for an estimated 3.4 million global cases annually, where it is predominantly associated with gastroenteritis. In most parts of the world NTS is not normally associated with invasive (bloodstream) disease. However, in Sub-Saharan Africa (SSA) there is a high burden of this type of disease, particularly in infants, with an untreated case fatality rate between 20 to 25% [1–5]. Among iNTS cases in SSA, it is estimated that ~65% occur in children <5 years of age [1], with a range from 166–568/100,000 cases of person-years of observation (pyo). iNTS disease in SSA is more prevalent amongst Human Immunodeficiency Virus (HIV)-infected individuals, infants, and young children with malaria, anaemia and malnutrition [4].

Increasing antimicrobial resistance in iNTS is of great global concern where empiric oral options for effective treatment of life-threatening invasive disease are being rapidly eroded. Multi-drug resistance (MDR) (resistance to first line drugs such as ampicillin, sulpha-trimethoprim and chloramphenicol) in iNTS has been reported in Kenya and Malawi [6–8], and in other parts of SSA [9–11]. MDR *Salmonella* serotype Typhimurium of a novel sequence type (ST) 313 is endemic in SSA countries including Kenya [8], Malawi [6], the DRC [12], Nigeria [13], Ghana [14], South Africa [15] and Mozambique [16]. In these settings ST313 frequently produces septicemia in the absence of gastroenteritis. Recently we reported on the emergence of MDR ST 313 also resistant to extended spectrum beta lactams (ESBL) (including ceftriaxone) encoded on a CTX-M-15 gene located on a 304kb plasmid. Ceftriaxone is among the last-line antimicrobials used to treat severe life-threatening bacterial infection in our setting. iNTS isolates with resistance to ceftriaxone have also been reported in other countries in SSA: the Democratic Republic of the Congo (DRC) [12, 17], Malawi [18, 19] and South Africa [20]. MDR *S. Enteritidis* ST11, has also emerged in Kenya [21, 22] and Malawi [7], while in Ghana we have recent reports of emergence of fluoroquinolone resistance strains [23]. However, ESBL producing strains have not been reported.

While zoonotic animal reservoirs of iNTS ST313 remain unclear, it is hypothesized that iNTS infections can be transmitted through human-to-human contacts [22, 24]. Household asymptomatic carriers are thought to be a major reservoir and source for spread of infection to vulnerable individuals. Nairobi, Kenya's largest urban centre, has an estimated population of 4.5 million, a third of who live in informal settlements that lack proper sanitary and clean water facilities. The dense population and sub-optimal hygiene and sanitation contribute to the high burden of diseases due to enteric pathogens in these settings. Here, we report on MDR iNTS from patients treated at outpatient clinics that have a high degree of phylogenetic

relatedness to strains isolated from asymptomatic carriers; indicating possible human-human transmission in the community settings.

Materials and Methods

Study site

Mukuru informal settlement is situated in the eastern side of Nairobi about 15 KM from the city centre. It is one of the largest slums in the city with a population of around 250,000 people [25]. Informal settlements are made up of improvised temporary dwellings often made from scrap materials, such as corrugated metal sheets, plywood, and polythene-sheets. The informal settlements are densely populated and characterized by limited basic services and infrastructure for providing clean water, sanitation facilities, solid-waste management, roads, drainage, and electricity [26]. In addition to poverty, a number of factors associated informal settlements, including overcrowding, substandard housing, unclean and insufficient quantities of water, and inadequate sanitation, contribute to a high incidence of infectious diseases and increased mortality among those under five years [27, 28]. Mukuru Informal settlement is divided into eight villages; Mukuru Lunga-Lunga, Mukuru kwa Sinai, Mukuru kwa Reuben, Mukuru kwa Njenga, Mukuru Kayaba and Mukuru North. The two major villages within the larger Mukuru, Mukuru kwa Njenga and Mukuru kwa Reuben, were mapped. This was done through digitizing detailed physical structures, creation of geographic data of road networks and projection of geographic data in a plane using Universal Transverse Mercator system. Mukuru Reuben was demarcated into 9 zones with 7037 blocks, while Mukuru kwa Njenga had 8 zones with 8059 blocks (Fig 1). In total, 32,000 households were mapped.

Study subjects and specimen collection

The study population residing in Mukuru informal settlement receive routine immunization for common diseases within the Expanded programme on immunization. Patients presenting for care at 4 outpatient medical facilities that serve the informal settlement were approached for participation in the study if they were <16 years of age on the date of presentation; resided in the Mukuru slum; presented with a subjective history of at least 3 days of fever and have an axillary temperature of at least 37.5 °C or they presented with a history of fever of any duration and have an axillary temperature of at least 37.5°C; or they reported having had three or more loose or liquid stools (children > 2 years) or 8 or more for infants in the 24 hours before presentation, or one or more loose or liquid stool with visible blood. Eligible patients whose guardians gave written informed consent had a detailed history and physical examination recorded on a structured data form and a blood and stool specimen taken for culture. A structured questionnaire (S1 Table) was used to elucidate the following information from each case after blood and stool (or rectal swabs for those that stool samples were unavailable) samples were collected: clinical manifestations (e.g. vomiting, fever, and/or dehydration), demographic data (age, sex, and residence), and types of stool samples (watery, mucous, or bloody, or other form). Controls recruited for the study were age-matched children who came to the health facility for well mother and child clinic including routine vaccinations. Whenever available, two age-matched controls were randomly selected for each case identified. A questionnaire was used to obtain medical history of the control, and their demographic data (age, sex, and residence). From each control, a stool or rectal swab were obtained and recorded as formed, watery, mucous, bloody, or other form.

Detection of bacterial pathogens

Blood for culture. For blood culture 1–3 ml for children < 5 years of age and 5–10 ml for 5–16 years of age was collected in syringe, placed into culture media in Bactec bottles, and

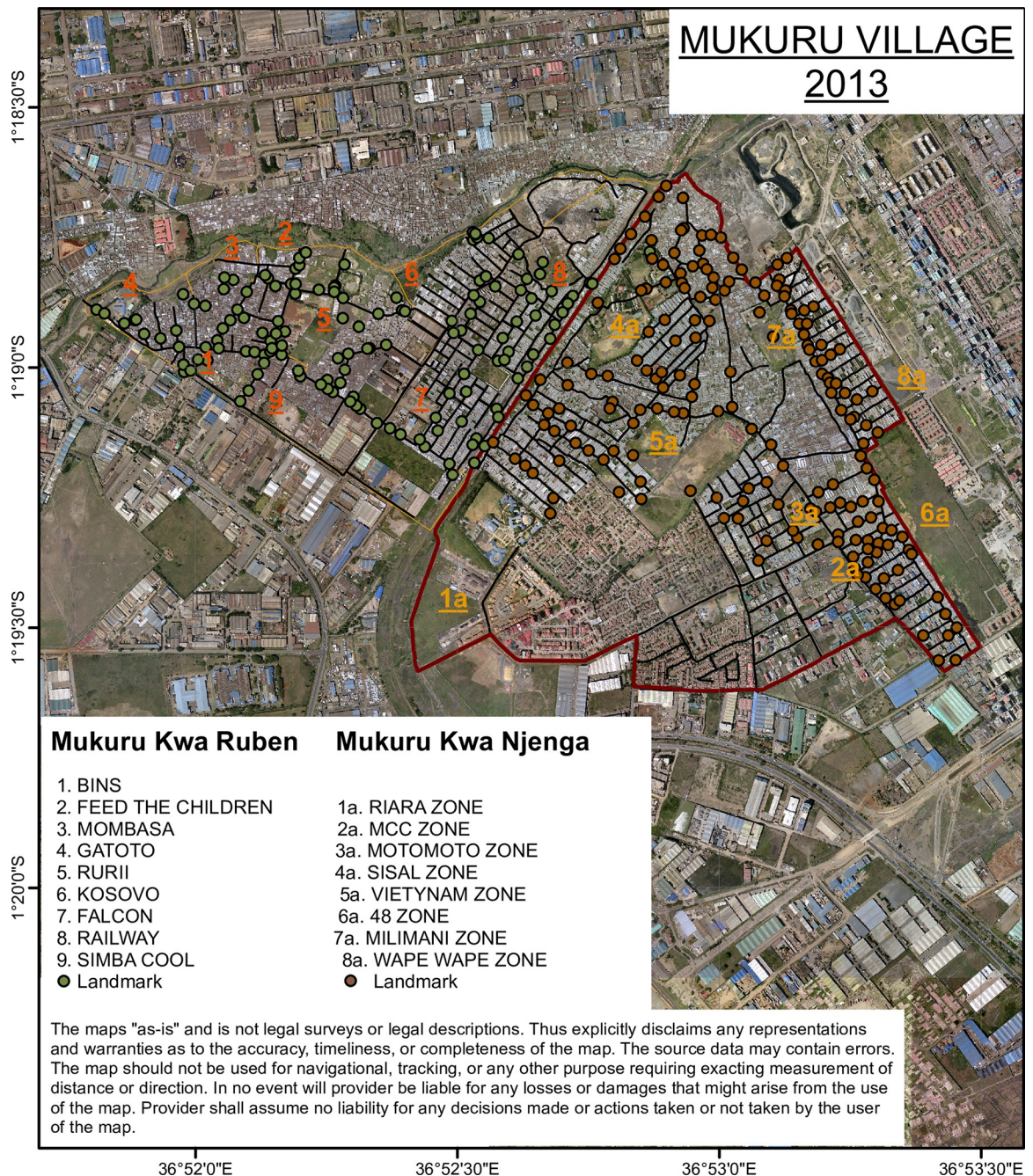


Fig 1. Mapped villages constituting Mukuru informal settlement study site. The image was acquired from Google Earth to create the map of structures/buildings of the study area as the first step of creating the GIS database. The images were geometrically rectified to a known coordinate system (Universal Transverse Mercator (UTM) 37S) on the basis of a number of Ground Control Points (GCPs), selected from the periphery of the study area so that possible errors would converge towards middle of the area. Images were converted into TIFF files in ArcGIS10x software.

<https://doi.org/10.1371/journal.pntd.0008440.g001>

transported daily to and analyzed at the KEMRI laboratory. Blood cultures were incubated at 37°C in a computerized BACTEC 9050 Blood Culture System (BD, Franklin Lakes, New Jersey, USA), and subcultured after 24 h onto blood, chocolate and MacConkey agar plates. The blood cultures were subsequently observed for a further 7 days for signs of bacterial growth

(auto-detection). A final subculture was performed for all blood cultures on the 8th day regardless of the state of bacterial growth. From the subcultures, bacterial isolates were identified using biochemical tests on API20E strips (API System, Montalieu Vercieu, France) and further typed by species-specific serological tests.

HIV serology/PCR tests. Comprehensive testing for HIV for all children whose HIV status is not known is currently routine in each of the clinical study sites. After providing counseling by qualified HIV counsellors and informed consent from parents or guardians (and assent for children 7 years of age and older), a drop of blood was spotted onto Whatman absorbent filter paper (Schleicher & Schuell 903 or Whatman BFC 180). The samples were transported to KEMRI laboratory for testing. Children above 18 months of age were tested using the Determine HIV Rapid test and confirmed using the Uni-Gold Rapid HIV test kits. These are the kits approved by Ministry of Health. For children below 18 months of age, HIV status was evaluated by PCR. Any HIV seropositive children were referred to a clinic physician for further evaluation and management.

Malaria blood smear test. As malaria is a major differential diagnosis in children presenting with fever, a malaria smear (thick and thin) was made for all cases. The smear slides were Giemsa stained and read on-site. Results were entered into study cards and also given to the clinician for patient management.

Stool cultures. The rectal swab or loopful of the stool specimen was transported to KEMRI laboratory and initially cultured on selenite F (Oxoid, Basingstoke, UK) broth aerobically at 37°C overnight. Broth cultures were then subcultured on MacConkey agar and *Salmonella-Shigella* agar (Oxoid) and incubated at 37°C overnight. To identify suspect *Salmonella* bacteria, non-lactose fermenting colonies were biochemically tested using triple sugar iron (TSI) slants. From the subcultures, bacterial isolates were identified using biochemical tests on API20E strips and further typed by species-specific serological tests.

Antibiotic susceptibility testing. Antibiotic susceptibility testing was performed using the disk diffusion technique for all commonly used antimicrobials in Kenya on Mueller-Hinton agar (Oxoid, Basingstoke, UK). For Gram negative enteric bacterial spp this includes ampicillin 10µg, tetracycline 30µg, gentamicin 10µg, trimethoprim 5µg, sulphamethoxazole 100µg, chloramphenicol 30µg, co-amoxiclav 20:10µg, cefuroxime 30µg, ceftazidime 30µg, ceftriaxone 30µg, cefotaxime 30µg, ciprofloxacin 5µg and nalidixic acid 10µg. MICs were performed using the E-test strips (AB BIODISK, Solna, Sweden). Results were interpreted according to the guidelines provided by the Clinical and Laboratory Standards Institute, 2017 [29].

Genomic analysis of NTS isolates. Genomic DNA from the NTS isolates listed in [S2 Table](#) was extracted using the Wizard Genomic DNA Extraction Kit (Promega, Wisconsin, USA). Two µg of genomic DNA was subjected to whole genome sequencing (WGS) using Illumina sequencing for high resolution and high throughput sample analysis. Sequence data is made publicly available and accession numbers are included in [S2 Table](#). Quality was checked through assembly and mapping statistics, and Kraken output was used to check for contamination. Genomics MLST was determined using the SRST2 software. *S. Typhimurium* sequences were mapped to *S. Typhimurium* D23580 (Accession Number = NC_016854), *S. Enteritidis* sequences to *S. Enteritidis* P125109 (Accession Number = NC_011294.1) using SMALT v0.7.4. Variation detection was performed using samtools mpileup v0.1.19 with parameters “-d 1000 -DSugBF” and bcftools v0.1.19 [30]. A pseudo-genome was constructed by substituting the base call at each site (variant and non-variant) in the BCF file into the reference genome and any site called as uncertain was substituted with an N. Insertions with respect to the reference genome were ignored and deletions with respect to the reference genome were filled with N's in the pseudo-genome to keep it aligned and the same length as the reference genome used for read mapping. Plasmids and recombinant regions (prophages and CRISPR sequences) in the

chromosome were removed from the alignment. SNP sites were extracted from the alignment using snp-sites [31] and used to construct a maximum likelihood phylogeny. RAxML v8.2.8 [32] with substitution model GTRCAT. Support for nodes on the trees was assessed using 100 bootstrap replicates. The *S. Typhimurium* strains and *S. Enteritidis* strains were aligned to reference genomes *Salmonella Typhimurium* D23580 and *S. Enteritidis* P125109, respectively, using a pipeline developed in-house at the Wellcome Trust Sanger Institute (WTSI). Trees were visualized using iTOL [33]. To identify the lineages, the sequences from this study were phylogenetically analysed within the African context of Feasey *et al.* and Van Puyvelde *et al.*, [7, 34]. Resistance genes were determined from the raw Illumina sequencing data using ariba v 2.12.1 [35] with CARD database version 3.0.2 [36].

Ethical Considerations. The study was approved by the Scientific and Ethics Review Unit (SERU) of KEMRI (SSC No. 2076). All parents and/or guardians of participating children were informed of the study objectives and voluntary written consent was sought and obtained before inclusion. A copy of the signed consent was filed and stored in password protected cabinets at KEMRI.

Hypothesis. The hypothesis was that high carriage rates of NTS strains in non-symptomatic individuals in the community may facilitate human-to-human NTS transmission.

Results

Patients and controls

From the 4 health facilities, a total of 10,527 children were recruited into the study; 4,201 were cases and 6,326 were healthy controls. In the study, a total of 4201 blood cultures from suspect iNTS cases and stool samples from 6326 age-matched controls were obtained from children less than 5 years of age. The majority of the suspect iNTS cases (26.1%) were aged 13–24 months, with the number decreasing to 14.1% in the age group 49–60 months (Table 1). 1.3% of the children were reported to be HIV positive, 4.1% tested malaria positive.

Highly related case and control isolates form a diverse NTS population

From the 4201 blood cultures from cases and 6326 fecal samples from age-matched controls we obtained a total of 133 *S. Typhimurium* isolates of which 83(62.4%) came from cases (53 blood and 30 fecal) and 50(37.6%) from controls (fecal). A total of 120 *S. Enteritidis* consisted of 70(58.3%) from cases (43 blood and 27 fecal) and 50(41.7%) from controls (fecal). Whole genome sequencing and phylogenetic analysis showed that both the invasive and enteric *S. Typhimurium* (133 isolates) and *S. Enteritidis* (120 isolates) form two distinct bacterial populations with different substructures (Figs 2 and 3), but with minimal phylogenetic differences between invasive and enteric isolates. The *S. Typhimurium* isolates harbour 4389 and the *S. Enteritidis* isolates 3175 core SNPs difference.

Table 1. Age distribution of patients, both cases and controls.

	Case	Control
Age category	No. (%)	No. (%)
0–12 months	811 (19.3)	846 (13.4)
13–24 months	1096 (26.1)	1812 (28.6)
25–36 months	875 (20.8)	1412 (22.3)
37–48 months	828 (19.7)	1304 (20.6)
49–60 months	591 (14.1)	952 (15.1)
Total	4201 (100)	6326 (100)

<https://doi.org/10.1371/journal.pntd.0008440.t001>

Whereas the current pandemic of invasive *S. Typhimurium* isolates across SSA is dominated by ST313 lineage II isolates, the Kenyan *S. Typhimurium* population is more diverse and falls into four lineages; two ST19 lineages (36.1%), ST313 lineage I (27.8%) and ST313 lineage II (36.1%) (Fig 2 and S1 Fig).

The *S. Enteritidis* isolates fell into four different lineages; the global epidemic lineage (46.6%), a so called outlier lineage (10.7%), a Central/Eastern African lineage (30.5%) as defined by Feasey *et al.* (2016) [7], and a novel Kenyan lineage (12.2%) (Fig 3 and S2 Fig).

In all *S. Typhimurium* and *S. Enteritidis* lineages, the isolates from blood and stool, originating from cases and controls were randomly distributed across the phylogenetic tree. In addition, in 8 cases the serotypes isolated from blood and from stool samples from the same individual were different (*S. Enteritidis* and *S. Typhi*, 4; *S. Typhimurium* and *S. Typhi*, 2; *S. Typhimurium* and *S. Enteritidis*, 2). However, corresponding isolates from individual cases and controls showed high genetic relatedness, with some examples where identical genotypes (0 core genome SNPs difference) were found among cases and controls.

NTS lineages have heterogeneous distributions of antimicrobial resistance genes

A total of 150/253(59.3%) NTS were resistant to 2 or more commonly available antimicrobials. The most common resistance phenotype were resistance to ampicillin, chloramphenicol, and sulphamethoxazole-trimethoprim (70%). In addition, 23(9.1%) isolates were resistant to extended spectrum beta lactams (cefotaxime or ceftriaxone or ceftazidime), and one isolate was resistant to ciprofloxacin. Using the Yates chi-square test there was no significant relationship between MDR phenotype with either age, co-morbidity with malaria, sickle cell trait or HIV status.

The presence of AMR genetic markers was correlated with specific phylogenetic clades, irrespective of the source of the isolate (case or control). Isolates that fell in *S. Typhimurium* ST313 lineages I and II and the Central/Eastern *S. Enteritidis* lineage show the highest AMR levels, with high abundance of MDR resistance genes and presence of ESBL genes (Figs 2 and 3). The majority of isolates that fell in *S. Typhimurium* ST19 lineages I and II (30/39; 77.0%) and the *S. Enteritidis* global epidemic lineage (44/54; 81.5%), did not harbor common genetic markers for AMR. Resistance genes contributing to the MDR phenotype (*bla**TEM*, *dfrA*, *sul* and *cat*) were present in 52(39%) *S. Typhimurium* isolates and 3(2.5%) *S. Enteritidis* isolates. A total of 36(27.1%) *S. Typhimurium* carried ESBL genes (*bla**CTX-M* and *bla**OXA-1*). SNPs associated with decreased susceptibility to ciprofloxacin was identified in 3 *S. Typhimurium* isolates (*GyrA* D87Y, n = 2 and *GyrB* S463A, n = 1) and 3 *S. Enteritidis* isolates (*GyrA* D87Y, n = 2 and *GyrA* T83I, n = 1). Of note, one *S. Typhimurium* isolate showed resistance markers for MDR, ESBL activity and a ciprofloxacin resistance marker, the hallmarks of an extensively drug resistant (XDR) strain.

Prevalence of HIV and malaria in the study population

The prevalence of HIV was 2.4% among cases and 3.8% among controls, while that of malaria was 4.1% among the cases and 1.8% among controls. Analysis for correlation of HIV and malaria prevalence with presence of iNTS disease did not show any significant association.

Discussion

Invasive NTS disease in SSA continues to be a major cause of childhood morbidity and mortality [4, 6, 12, 22]. In Kenya the incidence ranges from 166-625/100,000 pyo, with mortality up to 28% [22]. In our settings, we observed a prevalence of 4.3%, very similar to rates observed in

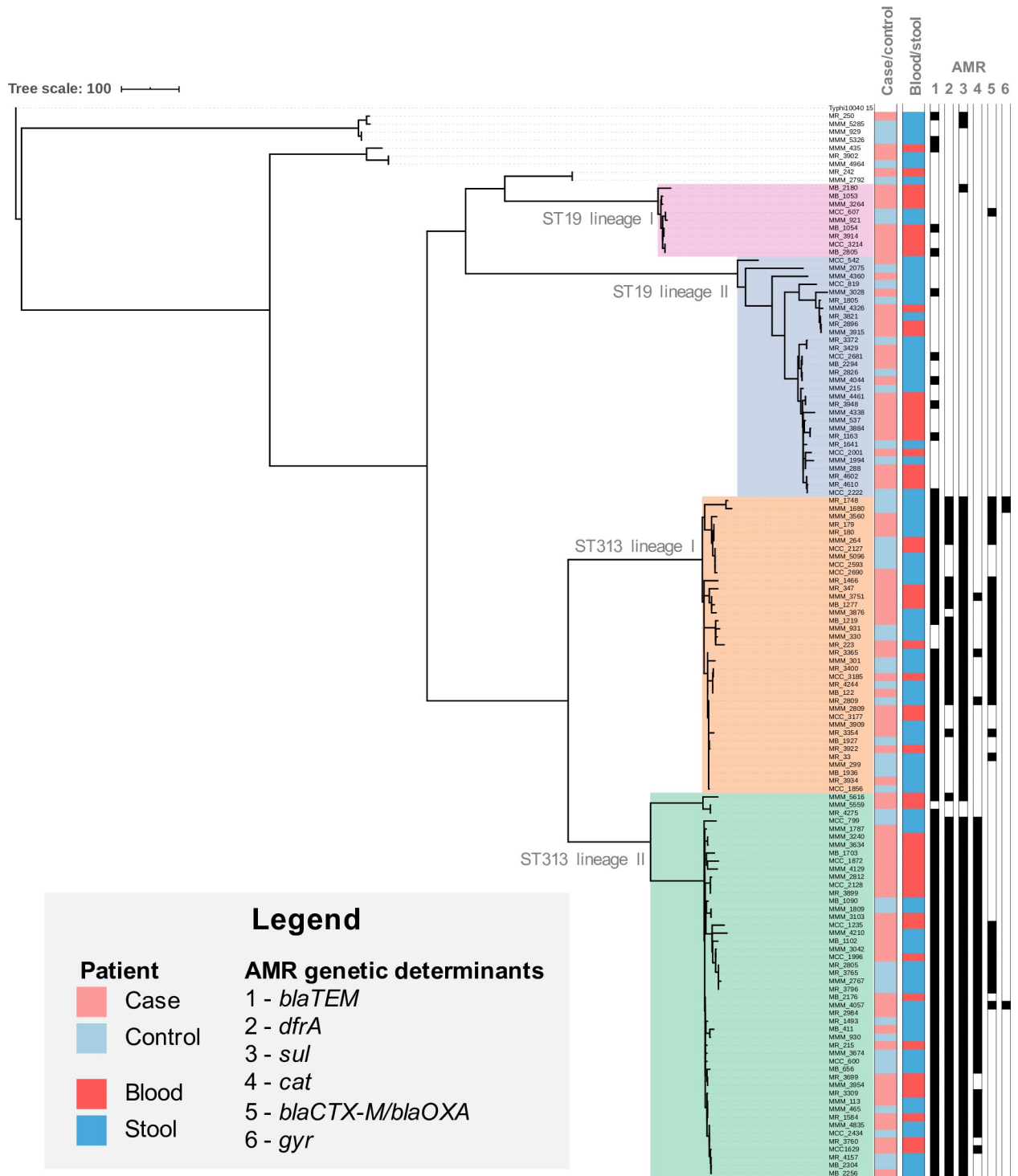


Fig 2. Phylogenetic tree of *S. Typhimurium* isolates from this study. Maximum likelihood phylogenetic tree based on the 130 *S. Typhimurium* genome sequences from this study. Sequencing reads were mapped to *S. Typhimurium* ST313 lineage II reference strain D23580, and *S. Typhi* 10040_15 was added as an outgroup to root the tree. The tree is based on 61161 chromosomal SNPs. Patient state (case/control) and the source (blood/stool) is visualized as indicated in the legend. Presence of multidrug resistance markers (MDR; *bla*, *dfr*A, *sul*, *cat*), *bla*CTX-M/*bla*OXA antimicrobial resistance markers and SNPs in *gyr* are annotated. Branch lengths represent numbers of SNPs as indicated in the scale bar.

<https://doi.org/10.1371/journal.pntd.0008440.g002>

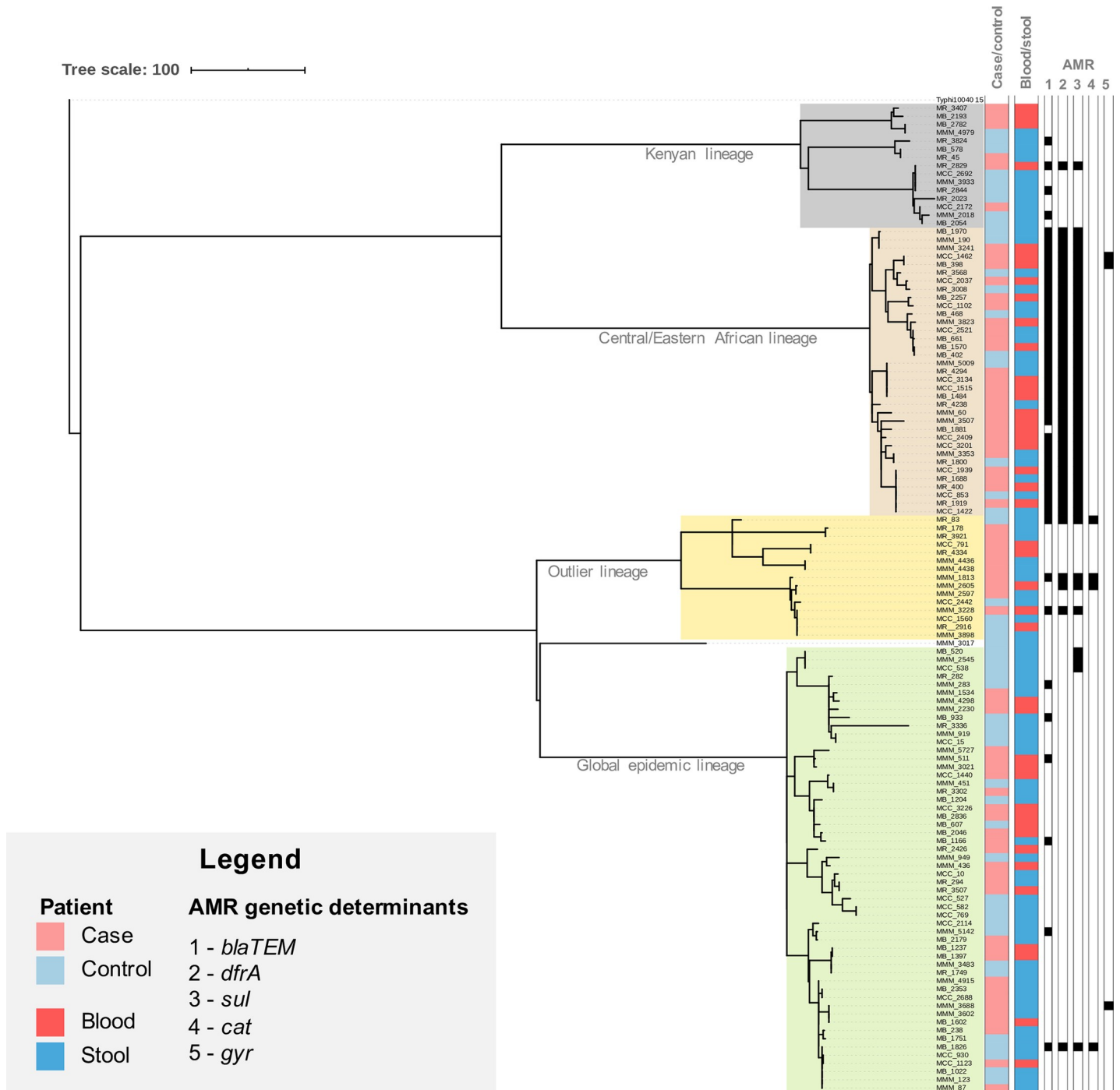


Fig 3. Phylogenetic tree of *S. Enteritidis* isolates from this study. Maximum likelihood phylogenetic tree based on the 120 *S. Enteritidis* genome sequences from this study. Sequencing reads were mapped against *S. Enteritidis* reference strain P125109, and *S. Typhi* 10040_15 was added as an outgroup to root the tree. The tree is based on 60302 chromosomal SNPs. Patient state (case/control) and the source (blood/stool) is visualized as indicated in the legend. Presence of multidrug resistance markers (MDR; *bla*, *dfrA*, *sul*, *cat*) and SNPs in *gyr* are annotated. Branch lengths represent numbers of SNPs as indicated in the scale bar.

<https://doi.org/10.1371/journal.pntd.0008440.g003>

Malawi [6], Burkina Faso [37] and the DRC [12]. The Mukuru informal settlement is densely populated, and with poor WaSH characteristics, which facilitate the transmission of enteric infections, including iNTS strains, in this endemic setting.

The two main invasive *S. enterica* serotypes were *S. Typhimurium* (52.5%) and *S. Enteritidis* (47.5%). Similar patterns of serotypes causing iNTS disease in SSA have been described previously in Malawi [6], Ghana [14], the DRC [17, 38] Mozambique [39] and Burkina Faso [37]. From the analysis of genomic data, the population of *S. Typhimurium* is moderately diverse, with ST313 lineage I and ST313 lineage II being most common (63.9%), and ST19 lineages at 36.1%. In addition in 8 cases the serotypes isolated from blood and from stool samples of children were different (*S. Enteritidis* and *S. Typhi*, 4; *S. Typhimurium* and *S. Typhi*, 2; *S. Typhimurium* and *S. Enteritidis*, 2). This clearly indicates the unique multiplicity of *Salmonella* serotypes causing invasive disease in this population. Other studies in SSA [37, 39, 40] also observed similar proportions for ST313 lineages I and II, but fewer ST19 strains. In Kenya it appears that ST19 is also an important cause of iNTS disease as well asymptomatic carriage. ST19 has also been described in other studies on iNTS SSA but at lower prevalence rates [4, 16, 41].

The population structure of *S. Enteritidis* was also diverse, with the most common lineages (The East and Central Africa and the Global lineages), also being commonly found in other SSA iNTS endemic countries [37, 42]. However, we observed a novel Kenyan lineage *S. Enteritidis* (12.2%). The diverse population structure of both *S. Typhimurium* and *S. Enteritidis* that form the main iNTS strains causing disease in Kenya could have implications for vaccine development and coverage for candidate vaccines currently under development.

In this case-control study, analysis of proportions by the Yates chi-square test showed a high correlation (p -value < 0.01) between *S. Typhimurium* and *S. Enteritidis* genotypes in cases and controls. This implies a potentially important role for asymptomatic carriage in the community and this silent carriage could serve as possible source of infection for vulnerable individuals. In addition, these findings further indicate a possible role for human-human transmission as an important route for spread of iNTS disease in these endemic settings [24]. It will be crucial to understand the dynamics of transmission in these settings so we can target the asymptomatic carriers for possible vaccination.

The *S. Typhimurium* and *S. Enteritidis* lineages previously linked to iNTS disease in Africa including ST313 lineages I and II, and the Central/Eastern African Enteritidis lineage [42] show the highest rates of antimicrobial resistance. In agreement with these previous observations, isolates from this study that fall in *S. Typhimurium* ST313 lineages I and II and the Central/Eastern *S. Enteritidis* lineage show the highest antimicrobial resistance levels, with high abundance of MDR genes and presence of ESBL genes. The most common resistance genes associated with MDR were *bla*_{TEM}, *dfrA*, *sul* and *cat*. These MDR NTS lineages have previously been described for their importance in the SSA iNTS pandemic [40, 42]. These MDR genes on plasmids are self-transferrable between species and may play a major role in the spread of AMR in the enteric bacteria population. One isolate had co-resistance of ciprofloxacin and ceftriaxone; these drugs are treatment options of last resort for severe iNTS disease. These isolates bear the characteristics of Extremely Drug Resistant (XDR) phenotype as previously described [34, 41, 43].

In conclusion, we observed a high prevalence of NTS carriage in the study population, which may provide a significant reservoir for transmission, and maintenance of invasive disease in the population. Multidrug resistance including increasing resistance to extended spectrum beta-lactams and reduced susceptibility to fluoroquinolones presents a huge challenge for management of severe infections in this population. As we face the challenges of treating MDR iNTS disease, it is important to note that alternative effective options for management of iNTS disease are dwindling. Indeed other options are often unavailable or too expensive to be affordable to patients attending the public healthcare facilities. Where new effective antimicrobials are lacking, developments in vaccines may offer hope for reducing the burden of iNTS in

endemic settings in SSA. A bivalent efficacious vaccine, targeting *Salmonella* serovars Typhimurium and Enteritidis, would significantly lower the disease burden in high-risk populations especially as asymptomatic carriage in the endemic settings is high.

Supporting information

S1 Table. Clinical examination data form.

(DOCX)

S2 Table. List and Accession numbers for non-typhoidal *Salmonella* (NTS) isolates used in this study.

(XLS)

S1 Fig. Phylogenetic Tree of *S. Typhimurium* showing the single nucleotide polymorphism (SNP) differences between lineages.

(JPG)

S2 Fig. Phylogenetic Tree of *S. Enteritidis* showing the single nucleotide polymorphism (SNP) differences between lineages.

(JPG)

S3 Fig. *S. Typhimurium* lineages and their genetic relatedness in context.

(JPG)

S4 Fig. *S. Enteritidis* lineages and their genetic relatedness in context.

(JPG)

Acknowledgments

The authors thank the Director General of KEMRI for support in publishing these data, as well as the field and laboratory staff of the Mukuru kwa Njenga Invasive *Salmonella* Disease Surveillance Project for their contribution in data collection and laboratory analysis.

Author Contributions

Conceptualization: Samuel Kariuki, John Clemens, Gordon Dougan.

Data curation: Samuel Kariuki, Cecilia Mbae, Sandra Van Puyvelde, Robert Onsare, Susan Kawai, Celestine Wairimu, Ronald Ngetich, John Clemens.

Formal analysis: Samuel Kariuki, Susan Kawai, Celestine Wairimu, Gordon Dougan.

Funding acquisition: Samuel Kariuki.

Investigation: Cecilia Mbae, Susan Kawai.

Methodology: Samuel Kariuki, Cecilia Mbae, Susan Kawai, John Clemens.

Project administration: Samuel Kariuki, Cecilia Mbae.

Supervision: Cecilia Mbae.

Validation: Sandra Van Puyvelde.

Writing – original draft: Samuel Kariuki.

Writing – review & editing: Samuel Kariuki, Sandra Van Puyvelde, John Clemens, Gordon Dougan.

References

1. Ao TT, Feasey NA, Gordon MA, Keddy KH, Angulo FJ, Crump JA. Global burden of invasive nontyphoidal *Salmonella* disease, 2010(1). *Emerging infectious diseases*. 2015; 21(6).
2. Crump JA, Heyderman RS. A Perspective on Invasive *Salmonella* Disease in Africa. *Clinical infectious diseases: an official publication of the Infectious Diseases Society of America*. 2015; 61 Suppl 4:S235–40.
3. Gordon MA. Invasive nontyphoidal *Salmonella* disease: epidemiology, pathogenesis and diagnosis. *Current opinion in infectious diseases*. 2011; 24(5):484–9. <https://doi.org/10.1097/QCO.0b013e32834a9980> PMID: 21844803
4. Uche IV, MacLennan CA, Saul A. A Systematic Review of the Incidence, Risk Factors and Case Fatality Rates of Invasive Nontyphoidal *Salmonella* (iNTS) Disease in Africa (1966 to 2014). *PLoS neglected tropical diseases*. 2017; 11(1):e0005118. <https://doi.org/10.1371/journal.pntd.0005118> PMID: 28056035
5. WHO. World Health Organization: Foodborne disease burden epidemiology reference group 2007–2015. WHO estimates of the global burden of foodborne diseases. 2015.
6. Feasey NA, Masesa C, Jassi C, Faragher EB, Mallewa J, Mallewa M, et al. Three Epidemics of Invasive Multidrug-Resistant *Salmonella* Bloodstream Infection in Blantyre, Malawi, 1998–2014. *Clinical infectious diseases: an official publication of the Infectious Diseases Society of America*. 2015;61 Suppl 4: S363–71.
7. Feasey NA, Hadfield J, Keddy KH, Dallman TJ, Jacobs J, Deng X, et al. Distinct *Salmonella* Enteritidis lineages associated with enterocolitis in high-income settings and invasive disease in low-income settings. *Nature genetics*. 2016; 48(10):1211–7. <https://doi.org/10.1038/ng.3644> PMID: 27548315
8. Kariuki S, Onsare RS. Epidemiology and Genomics of Invasive Nontyphoidal *Salmonella* Infections in Kenya. *Clinical infectious diseases: an official publication of the Infectious Diseases Society of America*. 2015; 61 Suppl 4:S317–24.
9. Bachou H, Tylleskar T, Kaddu-Mulindwa DH, Tumwine JK. Bacteraemia among severely malnourished children infected and uninfected with the human immunodeficiency virus-1 in Kampala, Uganda. *BMC infectious diseases*. 2006; 6:160. <https://doi.org/10.1186/1471-2334-6-160> PMID: 17090299
10. Ikumapayi UN, Antonio M, Sonne-Hansen J, Biney E, Enwere G, Okoko B, et al. Molecular epidemiology of community-acquired invasive non-typhoidal *Salmonella* among children aged 2–29 months in rural Gambia and discovery of a new serovar, *Salmonella enterica* Dingiri. *Journal of medical microbiology*. 2007; 56(Pt 11):1479–84. <https://doi.org/10.1099/jmm.0.47416-0> PMID: 17965348
11. Vandenberg O, Nyarukweba DZ, Ndeba PM, Hendriksen RS, Barzilay EJ, Schirvel C, et al. Microbiologic and clinical features of *Salmonella* species isolated from bacteremic children in eastern Democratic Republic of Congo. *The Pediatric infectious disease journal*. 2010; 29(6):504–10. <https://doi.org/10.1097/INF.0b013e3181cd615a> PMID: 20104200
12. Kalonji LM, Post A, Phoba MF, Falay D, Ngbonda D, Muyembe JJ, et al. Invasive *Salmonella* Infections at Multiple Surveillance Sites in the Democratic Republic of the Congo, 2011–2014. *Clinical infectious diseases: an official publication of the Infectious Diseases Society of America*. 2015; 61 Suppl 4:S346–53.
13. Obaro SK, Hassan-Hanga F, Olateju EK, Umoru D, Lawson L, Olanipekun G, et al. *Salmonella* Bacteremia Among Children in Central and Northwest Nigeria, 2008–2015. *Clinical infectious diseases: an official publication of the Infectious Diseases Society of America*. 2015; 61 Suppl 4:S325–31.
14. Eibach D, Al-Emran HM, Dekker DM, Krumkamp R, Adu-Sarkodie Y, Cruz Espinoza LM, et al. The Emergence of Reduced Ciprofloxacin Susceptibility in *Salmonella enterica* Causing Bloodstream Infections in Rural Ghana. *Clinical infectious diseases: an official publication of the Infectious Diseases Society of America*. 2016; 62 Suppl 1:S32–6.
15. Feasey NA, Archer BN, Heyderman RS, Sooka A, Dennis B, Gordon MA, et al. Typhoid fever and invasive nontyphoid salmonellosis, Malawi and South Africa. *Emerging infectious diseases*. 2010; 16(9):1448–51. <https://doi.org/10.3201/eid1609.100125> PMID: 20735930
16. Moon TD, Johnson M, Foster MA, Silva WP, Buene M, Valverde E, et al. Identification of Invasive *Salmonella enterica* Serovar Typhimurium ST313 in Ambulatory HIV-Infected Adults in Mozambique. *J Glob Infect Dis*. 2015; 7(4):139–42. <https://doi.org/10.4103/0974-777X.170496> PMID: 26751031
17. Lunguya O, Lejon V, Phoba MF, Bertrand S, Vanhoof R, Glupczynski Y, et al. Antimicrobial resistance in invasive non-typhoid *Salmonella* from the Democratic Republic of the Congo: emergence of decreased fluoroquinolone susceptibility and extended-spectrum beta lactamases. *PLoS neglected tropical diseases*. 2013; 7(3):e2103. <https://doi.org/10.1371/journal.pntd.0002103> PMID: 23516651
18. Gordon MA, Graham SM, Walsh AL, Wilson L, Phiri A, Molyneux E, et al. Epidemics of invasive *Salmonella enterica* serovar enteritidis and *S. enterica* Serovar typhimurium infection associated with

- multidrug resistance among adults and children in Malawi. *Clinical infectious diseases: an official publication of the Infectious Diseases Society of America*. 2008; 46(7):963–9.
19. Msefula CL, Kingsley RA, Gordon MA, Molyneux E, Molyneux ME, MacLennan CA, et al. Genotypic homogeneity of multidrug resistant *S. Typhimurium* infecting distinct adult and childhood susceptibility groups in Blantyre, Malawi. *PLoS one*. 2012; 7(7):e42085. <https://doi.org/10.1371/journal.pone.0042085> PMID: 22848711
 20. Mahon BE, Fields PI. Invasive Infections with Nontyphoidal *Salmonella* in Sub-Saharan Africa. *Microbiol Spectr*. 2016; 4(3).
 21. Kariuki S, Gordon MA, Feasey N, Parry CM. Antimicrobial resistance and management of invasive *Salmonella* disease. *Vaccine*. 2015; 33 Suppl 3:C21–9.
 22. Kariuki S, Mbae C, Onsare R, Kawai SM, Wairimu C, Ngetich R, et al. Multidrug-resistant Nontyphoidal *Salmonella* Hotspots as Targets for Vaccine Use in Management of Infections in Endemic Settings. *Clinical infectious diseases: an official publication of the Infectious Diseases Society of America*. 2019; 68(Supplement_1):S10–S5.
 23. Aldrich C, Hartman H, Feasey N, Chattaway MA, Dekker D, Al-Emran HM, et al. Emergence of phylogenetically diverse and fluoroquinolone resistant *Salmonella* Enteritidis as a cause of invasive nontyphoidal *Salmonella* disease in Ghana. *PLoS neglected tropical diseases*. 2019; 13(6):e0007485. <https://doi.org/10.1371/journal.pntd.0007485> PMID: 31220112
 24. Kariuki S, Revathi G, Kariuki N, Kiiru J, Mwituria J, Muyodi J, et al. Invasive multidrug-resistant nontyphoidal *Salmonella* infections in Africa: zoonotic or anthroponotic transmission? *Journal of medical microbiology*. 2006; 55(Pt 5):585–91. <https://doi.org/10.1099/jmm.0.46375-0> PMID: 16585646
 25. KNBS. Kenya National Bureau of Statistics: Kenya National Population and Housing Census 2009. 2010.
 26. Olack B, Feikin DR, Cosmas LO, Odero KO, Okoth GO, Montgomery JM, et al. Mortality trends observed in population-based surveillance of an urban slum settlement, Kibera, Kenya, 2007–2010. *PLoS one*. 2014; 9(1):e85913. <https://doi.org/10.1371/journal.pone.0085913> PMID: 24489678
 27. Mutisya M, Kandala NB, Ngware MW, Kabiru CW. Household food (in)security and nutritional status of urban poor children aged 6 to 23 months in Kenya. *BMC Public Health*. 2015; 15:1052. <https://doi.org/10.1186/s12889-015-2403-0> PMID: 26463345
 28. van de Vijver S, Oti S, Oduor C, Ezeh A, Lange J, Agyemang C, et al. Challenges of health programmes in slums. *Lancet*. 2015; 386(10008):2114–6. [https://doi.org/10.1016/S0140-6736\(15\)00385-2](https://doi.org/10.1016/S0140-6736(15)00385-2) PMID: 26452707
 29. CLSI. Clinical and Laboratory Standards Institute. Performance Standards for Antimicrobial Susceptibility Testing; Twenty-Seventh Informational Supplement. CLSI Document M100-S27. Wayne, PA: Clinical and Laboratory Standards Institute. 2017.
 30. Li H, Handsaker B, Wysoker A, Fennell T, Ruan J, Homer N, et al. The Sequence Alignment/Map format and SAMtools. *Bioinformatics*. 2009; 25(16):2078–9. <https://doi.org/10.1093/bioinformatics/btp352> PMID: 19505943
 31. Page AJ, Taylor B, Delaney AJ, Soares J, Seemann T, Keane JA, et al. SNP-sites: rapid efficient extraction of SNPs from multi-FASTA alignments. *Microb Genom*. 2016; 2(4):e000056. <https://doi.org/10.1099/mgen.0.000056> PMID: 28348851
 32. Stamatakis A. RAxML version 8: a tool for phylogenetic analysis and post-analysis of large phylogenies. *Bioinformatics*. 2014; 30(9):1312–3. <https://doi.org/10.1093/bioinformatics/btu033> PMID: 24451623
 33. Letunic I, Bork P. Interactive tree of life (iTOL) v3: an online tool for the display and annotation of phylogenetic and other trees. *Nucleic Acids Res*. 2016; 44(W1):W242–5. <https://doi.org/10.1093/nar/gkw290> PMID: 27095192
 34. Van Puyvelde S, Pickard D, Vandellannoote K, Heinz E, Barbe B, de Block T, et al. An African *Salmonella* Typhimurium ST313 sublineage with extensive drug-resistance and signatures of host adaptation. *Nat Commun*. 2019; 10(1):4280. <https://doi.org/10.1038/s41467-019-11844-z> PMID: 31537784
 35. Hunt M, Mather AE, Sanchez-Buso L, Page AJ, Parkhill J, Keane JA, et al. ARIBA: rapid antimicrobial resistance genotyping directly from sequencing reads. *Microb Genom*. 2017; 3(10):e000131. <https://doi.org/10.1099/mgen.0.000131> PMID: 29177089
 36. McArthur AG, Waglechner N, Nizam F, Yan A, Azad MA, Baylay AJ, et al. The comprehensive antibiotic resistance database. *Antimicrobial agents and chemotherapy*. 2013; 57(7):3348–57. <https://doi.org/10.1128/AAC.00419-13> PMID: 23650175
 37. Marks F, von Kalckreuth V, Aaby P, Adu-Sarkodie Y, El Tayeb MA, Ali M, et al. Incidence of invasive salmonella disease in sub-Saharan Africa: a multicentre population-based surveillance study. *Lancet Glob Health*. 2017; 5(3):e310–e23. [https://doi.org/10.1016/S2214-109X\(17\)30022-0](https://doi.org/10.1016/S2214-109X(17)30022-0) PMID: 28193398

38. Phoba MF, De Boeck H, Ifeka BB, Dawili J, Lunguya O, Vanhoof R, et al. Epidemic increase in *Salmonella* bloodstream infection in children, Bwamanda, the Democratic Republic of Congo. *European journal of clinical microbiology & infectious diseases: official publication of the European Society of Clinical Microbiology*. 2014; 33(1):79–87.
39. Mandomando I, Bassat Q, Sigauque B, Massora S, Quinto L, Acacio S, et al. Invasive *Salmonella* Infections Among Children From Rural Mozambique, 2001–2014. *Clinical infectious diseases: an official publication of the Infectious Diseases Society of America*. 2015; 61 Suppl 4:S339–45.
40. Okoro CK, Barquist L, Connor TR, Harris SR, Clare S, Stevens MP, et al. Signatures of adaptation in human invasive *Salmonella* Typhimurium ST313 populations from sub-Saharan Africa. *PLoS neglected tropical diseases*. 2015; 9(3):e0003611. <https://doi.org/10.1371/journal.pntd.0003611> PMID: 25803844
41. Hendriksen RS, Joensen KG, Lukwesa-Musyani C, Kalondaa A, Leekitcharoenphon P, Nakazwe R, et al. Extremely drug-resistant *Salmonella enterica* serovar Senftenberg infections in patients in Zambia. *Journal of clinical microbiology*. 2013; 51(1):284–6. <https://doi.org/10.1128/JCM.02227-12> PMID: 23077128
42. Musicha P, Cornick JE, Bar-Zeev N, French N, Masesa C, Denis B, et al. Trends in antimicrobial resistance in bloodstream infection isolates at a large urban hospital in Malawi (1998–2016): a surveillance study. *The Lancet infectious diseases*. 2017; 17(10):1042–52. [https://doi.org/10.1016/S1473-3099\(17\)30394-8](https://doi.org/10.1016/S1473-3099(17)30394-8) PMID: 28818544
43. Magiorakos AP, Srinivasan A, Carey RB, Carmeli Y, Falagas ME, Giske CG, et al. Multidrug-resistant, extensively drug-resistant and pandrug-resistant bacteria: an international expert proposal for interim standard definitions for acquired resistance. *Clinical microbiology and infection: the official publication of the European Society of Clinical Microbiology and Infectious Diseases*. 2012; 18(3):268–81.