



ADAPT STUDY

Australians' Drug use: Adapting to Pandemic Threats

WAVE 1 BULLETIN

JUNE 2020

Key findings from the 'Australians' Drug Use: Adapting to Pandemic Threats' (ADAPT) Study

BACKGROUND

What are the aims of the ADAPT Study?

The Australians' Drug Use: Adapting to Pandemic Threats (ADAPT) Study is exploring the **short and long-term impact** of the **COVID-19 pandemic** on the experiences of **Australians who use illicit drugs**. Findings will be used to ensure drug-related issues during COVID-19 are better understood and more accurately represented, so as to better inform **drug treatment and harm reduction in Australia**.

What does the ADAPT Study involve?

Australians who regularly (i.e. at least once a month) used illicit drugs in 2019 were invited to complete an **online survey** initially and follow-up surveys in **2 months, 4 months, 6 months, 12 months, 2 years and 3 years**. Participants could opt to complete the Wave 1 survey only.

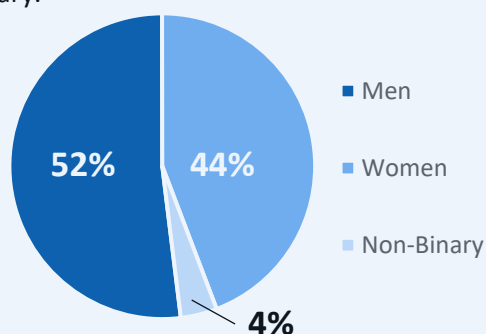
What have we found so far?

The information below outlines findings from the **702 eligible participants** who completed the Wave 1 survey from **29 April to 15 June 2020**.

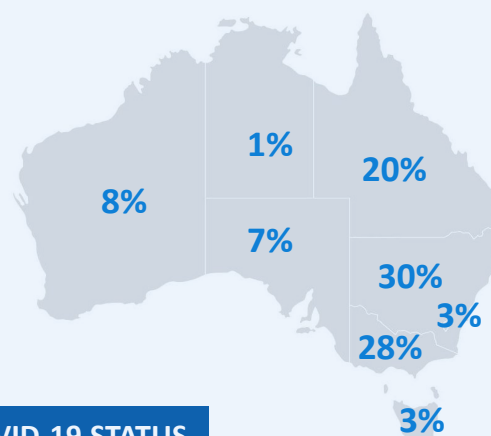
DEMOGRAPHICS

The ADAPT sample mostly comprised **young, well-educated** (62% completed tertiary/university qualification) **capital city dwellers**, although notably one-quarter (25%) of participants reported living in **regional/rural/remote areas**.

Participants ranged in age from **18-67**, with a median age of **25 years**. Similar proportions of men and women took part, with **4%** of participants identifying as non-binary.



Participants were recruited from:



COVID-19 STATUS

Most participants (86%) reported that they **had not experienced any COVID-19 symptoms, nor been tested**, at the time of interview. **10%** had been tested, with **no participants** reporting that they had tested positive (<1% **awaiting results**).

10%
of the sample
were tested for
COVID-19

Citation: Sutherland, R., Baillie, G., Memedovic, S., Hammoud, M., Barratt, M., Bruno, R., Dietze, P., Ezard, N., Salom, C., Degenhardt, L., Hughes, C. & Peacock, A. (2020). Key findings from the 'Australians' Drug Use: Adapting to Pandemic Threats (ADAPT)' Study. ADAPT Bulletin no. 1. Sydney: National Drug and Alcohol Research Centre, UNSW Sydney.

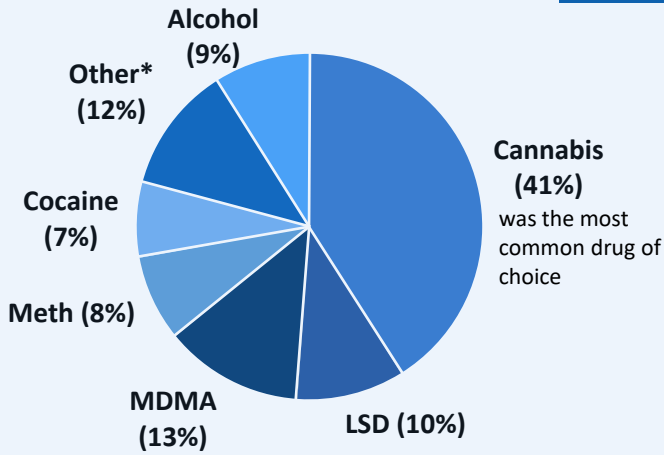


ADAPT STUDY

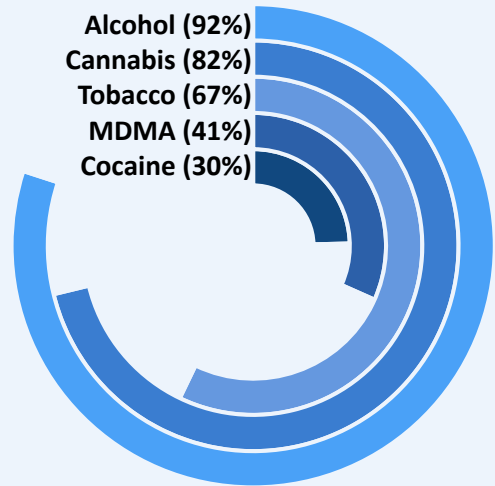
Australians' Drug use: Adapting to Pandemic Threats

DRUG USE

Drug of Choice



Most commonly used drugs post COVID-19 restrictions*



*i.e since March 2020

*Other includes ketamine (4%), heroin (3%), pharmaceutical opioids (3%), other (2%), benzodiazepines (1%), GHB (<1%), opioid agonist treatment (OAT) medication (<1%)

Participant Reports of Changes in their Drug Use Pre and Post COVID-19 Restrictions



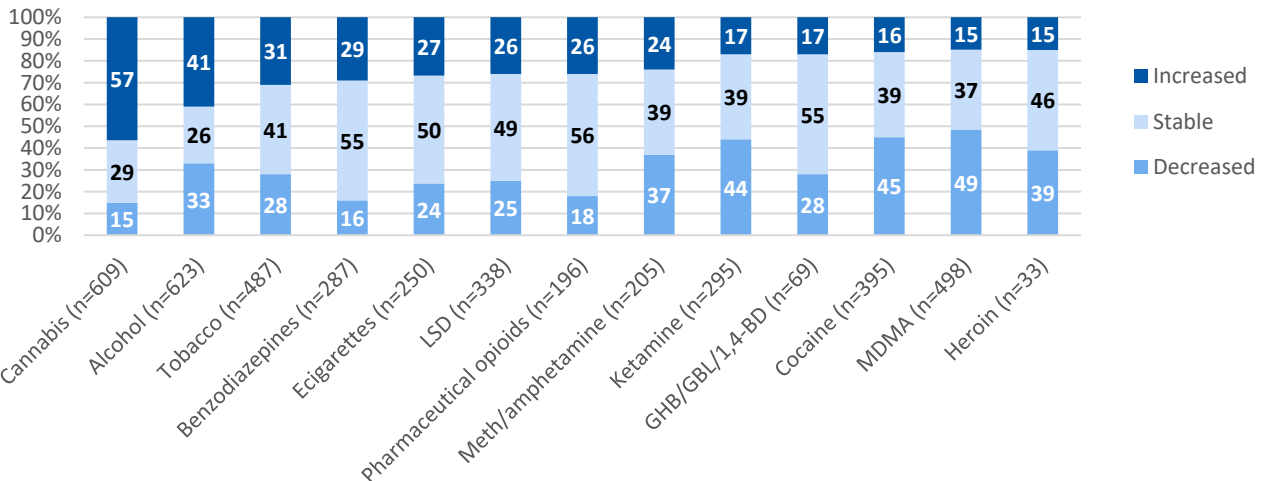
Cannabis and **alcohol** use had most commonly **increased** since the beginning of March (i.e., since COVID-19 restrictions) as compared to before.



MDMA, **cocaine** and **ketamine** use had most commonly **decreased** since the beginning of March (i.e., since COVID-19 restrictions) as compared to before.



Use of **pharmaceutical opioids**, **GHB**, **benzodiazepines**, **e-cigarettes** & **LSD** had most commonly remained **stable** since the beginning of March.





ADAPT STUDY

Australians' Drug use: Adapting to Pandemic Threats

DRUG USE BEHAVIOURS



Most participants continued to receive their drugs in person (76% in Feb 2020 vs 66% past month).



There was a **small increase** in the proportion of participants who had their illicit drugs delivered to them (36% Feb 2020 vs 41% past month).



There was a **small increase** in those who did not obtain illicit drugs post March 2020 (4% in Feb 2020 vs 10% in past month).



8% reported injecting any drug since the beginning of March 2020 (10% past year, 16% lifetime)

HARM REDUCTION (HR) BEHAVIOURS

In response to COVID-19 restrictions (i.e., since March 2020, n=685):

25%

Stocked up on illicit drugs



16%

Wiped down drug packages with soap/sanitizer



12%

Stocked up on prescribed medications



11%

Prepared drug themselves



36%

Washed hands before handling drugs/money



24%

Avoided sharing drug use equipment



Note: 10% reported engaging in other HR behaviours, and 30% reported engaging in none of the listed HR behaviours.

DRUG-RELATED HARMS

4% reported an overdose since the beginning of March 2020 (13% past year, 31% lifetime)

TREATMENT ACCESS & ENGAGEMENT

Drug Treatment since March 2020

Treatment engagement was low. Of those who answered (n=593):

4%

Had accessed drug treatment in the past four weeks

3%

Tried but were unable to access drug treatment

Mental health services since March 2020

Of those who answered (n=577):

37%

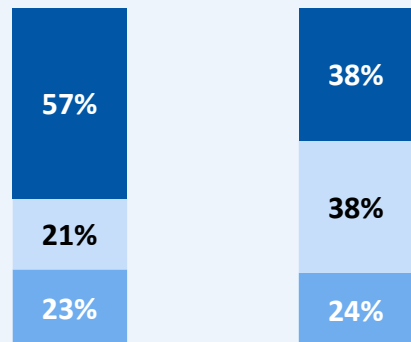
Had accessed help for mental health reasons in the past four weeks

8%

Tried but were unable to access mental health services

CHANGES IN HEALTH RATINGS

Participants' mental health and physical health ratings in the past month vs February 2020 (pre COVID-19 restrictions)



Mental health (n=592)

Physical health (n=567)

■ Better ■ Stable ■ Worse



UNSW SYDNEY



Kirby Institute





ADAPT STUDY

Australians' Drug use: Adapting to Pandemic Threats

SUMMARY

- The ADAPT sample comprised mostly young, well-educated capital city dwellers. Being a convenience sample, findings from the ADAPT study cannot be considered representative of all people that use drugs.
- Cannabis and alcohol use had most commonly increased relative to before March 2020, while use of MDMA, cocaine and ketamine had most commonly decreased.
- Participants reported engaging in a range of behaviours to reduce the risk of contracting COVID-19 and/or minimise impact of COVID-19 restrictions since March 2020, including washing hands before handling drugs/money and avoiding sharing drug equipment.
- More than half of participants reported poorer mental health in the past four weeks relative to before March 2020, with almost two-fifths reporting that they had accessed help for mental health reasons in the past four weeks.
- A small proportion of the sample reported that they had tried but been unable to access drug treatment and/or mental health services post March 2020.
- It is critical to continue to monitor the impacts of COVID-19 on different populations who use drugs (e.g., through the [SuperMIX](#) and [IDRS](#) interviews with people who regularly inject drugs).
- Findings from future surveys of the ADAPT sample will be reported on in future outputs.

ACKNOWLEDGEMENTS

- The participants who contributed their valuable time to share their experiences.
- The Australian Injecting & Illicit Drug Users League (AIVL) for their support and advice in developing the project.
- All those who gave advice and shared information about the project.
- The National Drug and Alcohol Research Centre and the Australian Government Department of Health for funding support.

FOR UPDATES ON FUTURE OUTPUTS

- Email adaptstudy@unsw.edu.au
- Check out our website at www.adaptstudy.org.au
- Follow [@NDARCNews](#) or [#ADAPTStudy](#) on Twitter
- Follow [ADAPT Study](#) on Facebook

©NDARC, UNSW SYDNEY 2020. This work is copyright. You may download, display, print and reproduce this material in unaltered form only (retaining this notice) for your personal, non-commercial use or use within your organisation. All other rights are reserved. Requests and enquiries concerning reproduction and rights should be addressed to the information manager, National Drug and Alcohol Research Centre, UNSW Sydney, NSW 2052, Australia.