



27 Feb 1991

## The Missouri Miner, February 27, 1991

Follow this and additional works at: [https://scholarsmine.mst.edu/missouri\\_miner](https://scholarsmine.mst.edu/missouri_miner)

These newspapers reflect the attitudes, perspectives, and beliefs of different times. Neither the library nor the university endorses the views expressed in these collections, some of which contain images and language which may be offensive to some readers.

---

### Recommended Citation

"The Missouri Miner, February 27, 1991" (1991). *The Missouri Miner Newspaper*. 2573.  
[https://scholarsmine.mst.edu/missouri\\_miner/2573](https://scholarsmine.mst.edu/missouri_miner/2573)

This Newspaper is brought to you for free and open access by Scholars' Mine. It has been accepted for inclusion in The Missouri Miner Newspaper by an authorized administrator of Scholars' Mine. This work is protected by U. S. Copyright Law. Unauthorized use including reproduction for redistribution requires the permission of the copyright holder. For more information, please contact [scholarsmine@mst.edu](mailto:scholarsmine@mst.edu).





# Missouri Miner



A publication of the students of the University of Missouri-Rolla

February 27, 1991

Volume 79, Number 21

Twenty-eight pages

## Jischke accepts Iowa State University presidency

Larry Williams  
EDITOR-IN-CHIEF

It was announced on February 21st that Dr. Martin C. Jischke accepted the position of President of Iowa State University. His appointment, along with it's \$164,000 salary, will become effective June 1, 1991. He was paid \$109,000 at UMR.

Last November, Dr. Martin Jischke withdrew his nomination as a candidate for the presidency of the University of Nebraska. He stated that his reason for this decision derived from the "continued attractiveness of the University of Missouri-Rolla." He also stated that he "wanted to focus his energies on the educational work here at UMR."

Dr. Jischke described his decision to take the job at ISU as a difficult one, realizing that he will miss UMR and the many friends he had made here.

Jischke told members of the media last Friday that his decision to leave UMR comes during a decisive time in Missouri. "Missouri must invest more to have competitiveness in education. . . Missouri is not far along in its commitment to education and the challenge of

Missouri is to build this commitment," Jischke said.

Jischke will take over the Iowa State University position on June 1. Iowa State is a school of 25,000 students compared to UMR's 4,200 students. Both schools focus on science and engineering.

"The opportunity at ISU is an exciting and challenging opportunity. ISU is a bigger, more complex institution," Jischke said.

On the broader view, Jischke states that the leadership in Iowa has made their commitment to education apparent.

"Iowa has bold, visionary ambitions. . . My role will be so central to that state in education. . . This is challenging to me as an educator," said Jischke.

Dr. Jischke assumed his duties as chancellor of the University of Missouri-Rolla on April 28, 1986. Since then, UMR has made progress by expanding research and private funding, adding new degree programs, and recruiting many fine administrators, faculty, and students.

See Jischke, page 3



Jason McHane

Chancellor Martin C. Jischke discusses his new position at a press conference Friday.

## International News Headlines---the week's events in review

Gary Meyer  
STAFF WRITER

**PERSIAN GULF**—Allied forces invaded Iraq and occupied Kuwait in the predawn hours of Sunday morning after Saddam Hussein failed to comply with an ultimatum stated by President George Bush. The first reports after the invasion, although severely censored, indicated a large number of successes for the allies with Iraqi troops surrendering *en masse* and a very limited number of casualties for the allies. Nearly twenty-four hours into the ground war, allied forces had penetrated Iraq and Kuwait from land, sea, and air, and were in the process of moving into Kuwait City.

Iraq, in what appears to be its imminent defeat, has set fire to over one-sixth of Kuwait's 950 oil wells in what officials and the press are referring to as the "scorched earth" policy.

General Norman Schwarzkopf, Commander of United States Forces in the Persian Gulf, implied the ground war was proceeding ahead of schedule, but warned of over-optimism, particularly regarding the number of casualties. Prior to the operation, another top army official said the ground war "will

be the fiercest, fastest ground campaign ever seen."

The brunt of the invasion occurred eight hours after Bush's ultimatum went unheeded. The ultimatum delivered on Friday to Iraqi president Saddam Hussein demanded the withdrawal of Iraqi troops begin by noon Saturday, Eastern Standard Time, and be completed in one week. In addition to the withdrawal of troops, the ultimatum demanded allowance for the prompt

**Army official: "The fiercest, fastest ground campaign ever seen."**

return of the Kuwaiti Government, dismantling of all prepared defenses and booby traps in Kuwait, release of all prisoners of war, and cessation of hostilities against Kuwait. In return, the United States promised to restrain from attacking the retreating Iraqi forces.

White House officials recognized the impossibility of a complete military withdrawal, suggesting that Iraq leave behind artillery and other weaponry in order to comply with the ultimatum.

The ultimatum was a hastily pre-

pared plan that followed an initiative by the Soviet Union to achieve a diplomatic end to the confrontation. Under the Soviet plan, Iraq would withdraw from Kuwait within 21 days beginning after a cease-fire by the allies. The supervision of the withdrawal would be conducted by a peacekeeping force determined by the U.N. Security Council. The Soviets also reassured Iraq that it would press the United Nations to take up other Middle East issues which implies the Israel/Palestinian problem. The Bush Administration politely acknowledged the plan, but quickly drafted the ultimatum to regain the diplomatic limelight and increase the chance of achieving its unstated goal of removing Saddam Hussein from power. The Iraqi parliament supported the Soviet proposal, indicating their willingness to withdraw from Kuwait, but rejected the United States' plan calling it "disgraceful." The invasion occurred after another week of heavy allied bombing concentrated on border battalions to clear pathways for allied ground troops. The bombing was accompanied by stepped up psychological warfare efforts in which leaflets were dropped telling soldiers how to surrender and hard rock music was

blasted across the desert via concert speakers in an attempt to demoralize further the war weary Iraqi troops. The music was interrupted for an occasional message indicating to Iraqi troops that if they wanted a hot meal, rest, and personal safety to surrender to the American Armed Forces. Secretary of Defense Dick Cheney announced at a press conference that detention provisions had been prepared for 100,000 prisoners.

**SOVIET UNION**—The adversarial relationship between Soviet president Mikhail Gorbachev and Russian republic president Boris Yeltsin reached a climax last week as Yeltsin demanded Gorbachev's immediate resignation.

In a nationwide television appearance, the Russian president accused Gorbachev of amassing "absolute personal power" and "deceiving the people" with a failed plan for national renewal. The Soviet Parliament, in a stormy session, adopted a resolution charging that Yeltsin's statement breached the constitution and was a declaration of civil war.

Later, communist hardliners demanded an emergency meeting of the Russian Federation Parliament in an attempt to oust Yeltsin. A meeting was

called for March 28 when Yeltsin will be asked to defend his policies and leadership. The radicals that support Yeltsin approved the timing of the meeting as it falls after March 17, the day of a referendum in which voters will be asked if they support a popular election for the presidency of the Russian republic. The referendum is expected to strengthen Yeltsin's position as he is by far the popular favorite.

Leaders of other republics also criticized the words of the Russian president as being too harsh, stating that top priority should be given to encouraging stability.

Messrs. Yeltsin and Gorbachev have been at odds since 1987 when Yeltsin said the Soviet leader's plans of Perestroika and Glasnost were more theory than practice and warned that Gorbachev valued his personal power above all else. Yeltsin is the popular favorite of Soviet citizens because of his belief in democratic principles and his "firebrand" image that portrays hope in the future of the economically weakened country. He is also respected among intellectuals for his advocacy of free market economics.

See News, page 3



# Calendar of Events

## Wednesday

A Corporate seminar on "Diversity in the Workforce" for students, faculty and staff of the University of Missouri-Rolla will be held at 6:30 p.m. in the Mechanical Engineering Building Auditorium.

Bible Study Club, 12:30 p.m.

Wesley Lenton Prayer Time, Walnut, 1:30 p.m.

Wesley Mtg., 6 p.m.

ASCE Mtg., 114 CE, 7 p.m.

Newman Mass, 9 p.m.

Mathematics and Statistics Research Seminar, "Convergence and Fourier Character of Trigonometric Transforms," Drs. Grow and Stanojevic, UMR, 12:30 p.m., Room 327, M-CS Bldg. Free.

Chemical Engineering Seminar, "Measurement of Colloidal Forces Using Total Internal Reflection Microscope," Dennis C. Prieve, Chemical Engineering Department, Carnegie-Mellon University, 4 p.m., Room 125, Schrenk Hall. Free.

Geology and Geophysics Seminar, "Thermal Maturity and Sandstone Diagenesis in the Arkoma Basin," David Houseknecht, 4:30 p.m., 204 McNutt. Free.

Wesley Foundation presents, Dr. Mehmet Saridireli, from Turkey, Topic of Discussion: The Middle East, 6 p.m. at Wesley, 403 w. 8th.

Phi Eta Sigma Mtg., 6 p.m., Room 204 McNutt Hall.

## Thursday

Spring Career Information Day for students of the University of Missouri-Rolla will be held from 9:30 a.m. to 3:30 p.m. in Centennial Hall, University Center-East.

Toastmasters, 220 Fulton, 4:30 p.m.

Council of Grad. Students, 220 Fulton, 5 p.m.

Rock Climbing Club, 206 McNutt, 6 p.m.

Omega Chi Epsilon, 126 Schrenk, 6 p.m.

IK, 204 McNutt, 6:30 p.m.

Climbing Club, 6:30 p.m.

Kappa Kappa Psi, 101 Old Cafe, 6:30 p.m.

American Nuclear Soc. Mtg., 227 Fulton, 6:30 p.m.

UMR Film Series, "The Two Jakes," 7 p.m., ME.

Math Help Sessions, 203 M-CS, 7 p.m.

Chess Club, 7:30 p.m.

M-Club, 114 CE, 7:30 p.m.

Gamin Mtg., Me, 8 p.m.

BACCHUS, Walnut, 8 p.m.

UMR Men's Basketball Lincoln University, 7:30 p.m., Bullman Multi-Purpose Bldg. Admission charged. UMR students admitted free with a valid UMR I.D.

African-American Heritage Month event, Survey of Black Contributions to Science Technology, three 45-minute sessions, 10:25 a.m.-11:10 a.m.; 12:45 p.m.-1:30 p.m.; 1:45 p.m.-2:30 p.m., Rolla Middle School.

The American Society for Engineering Management and the Institute of Industrial Engineers will hold their second general meeting at 6:30 p.m. in Chem. E. Bldg., Room G-3. The guest speaker will be Matt Pisch of the Arkla Product Company. His topic will be "Goals and Career Motivation".

Juggling Club, Multi-Purpose Bldg., south balcony, 6 p.m. Beginners always welcome.

## Friday

MID-SEMESTER!!!!!!

SUB Movie: Total Recall, 104 ME.

Viola Da Gamba Workshop

IVCF, 139 Schrenk, 7 p.m.

CPAS: Ridge String Quartet, Centennial, 8 p.m.

Mathematics and Statistics Research Seminar, "Convergence and Fourier Character of Trigonometric Transforms," Drs. Grow and Stanojevic, UMR, 12:30 p.m., Room 327, M-CS Bldg. Free.

Chemical Engineering Seminar, "Optimization Based Approach to Optimal Mixing in Chemical Reacting Systems," Luke Achenie, Shell Development Co., Houston, Texas, 4 p.m., Room 125, Schrenk. Free.

## Saturday

SUB Movie: Total Recall, 104 ME.

Miners at NEMSU

Open Gaming, 317 CE, 9 a.m.

Chinese Student Assoc., G-3 Schrenk, 7 p.m.

Third Annual Ozark Area Viola Da Gamba Society of America Workshop. Classes will be held in University Center-East. Additional details to be announced.

## Sunday

Wesley Chapel, 7 p.m.

Omega Sigma Mtg., 125 CE, 8 p.m.

KMNR Mtg., 107C ME Annex, 8 p.m.

## Monday

Christian Campus Fellowship Mtg., Missouri, 6 p.m.

GDI BOG, Maramec, 7 p.m.

Mathematics and Statistics Research Seminar, "Convergence and Fourier Character of Trigonometric Transforms," Drs. Grow and Stanojevic, UMR 12:30 p.m., Room 327, M-CS Bldg. Free.

Chemistry Department Seminar, "Toward Molecular Wires - Encapsulation of Conjugated Polymers in Zeolites," Dr. Thomas Bein, Chemistry Department, University of New Mexico, Albuquerque, 4:30 p.m., Monsanto Hall (G-3), Schrenk Hall. Free.

Life Talks, 7:45 p.m., 414 Holtman. Sponsored by Koinonia.

## Tuesday

MAKING THOSE "MAJOR" DECISIONS? P.M.

SWE, UCE, 5:30 p.m.

Student Council Mtg., 103 Eng. Mgt., 6:30 p.m.

Math Help Sessions, 203 M-CS, 7 p.m.

Tau Beta Pi, 114 CE, 7 p.m.

EIT Review Session, 114 CE, 7 p.m.

Kappa Mu Epsilon, G-5 H-SS, 8:30 p.m.

## Next Wednesday

Bible Study Club, 12:30 p.m.

Wesley Lenton Prayer Time, Walnut, 1:30 p.m.

TEST ANXIETY, 201 Norwood, 3:30 p.m.

Wesley Mtg., 6 p.m.

Blue Key Mtg., 6 p.m.

AGC Mtg., 114 CE, 7 p.m.

SME, McNutt, 7:30 p.m.

Met. Soc. Mtg., McNutt, 7:30 p.m.

Alpha Chi Sigma Mtg., G-3 Schrenk, 7:30 p.m.

Newman Mass, 9 p.m.

Mathematics and Statistics Research Seminar, "Convergence and Fourier Character of Trigonometric Transforms," Drs. Grow and Stanojevic, UMR, 12:30 p.m., Room 327, M-CS Bldg. Free.

Chemical Engineering Seminar, 4 p.m., Room 125 Schrenk Hall. Topic and speaker to be announced. Free.

## Financial Aid

Bright Flight Scholarship Checks The Winter 91 "Bright Flight" checks are now available to be picked up or signed over at the Cashier's office, G-1 Parker Hall. Cashier's hours are from 8:30 to 3:00, M-F.

NAVY ENGINEER Each year the United States Navy selects approximately 300 of the top students in engineering, math, physics and chemistry from around the nation, for its highly prestigious Nuclear Propulsion Officer Candidate program. Minimum qualifications are:

- completed 2 semesters of calculus and calculus based physics
  - grade point average of 3.3 or better (3.0 for seniors)
  - U.S. Citizenship
- For more information contact the Student Financial Aid office, G-1 Parker Hall.

The Student Financial Aid office is available to give presentations on Financial Aid to any interested parties. For more information or to make arrangements, call 341-4282 or come by G-1 Parker Hall.

SOCIETY OF PROFESSIONAL WELL LOG ANALYSTS FOUNDATION The Society of Professional Well Log Analysts Foundation provides financial assistance to eligible and qualified recipients pursuing a degree program related to oil, gas or other mineral formation evaluation. Scholarships are available for undergraduate and graduate students and are awarded on a competitive basis which takes into account academic achievement, career objectives, and financial need. Grants are available to undergraduate and graduate students and to faculty members to support research studies and educational projects related to formation evaluation.

Deadline dates for submitting applications for SPWLA scholarships and grants are March 18, 1991.

For more information and application forms contact the Student Financial Aid office, G-1 Parker Hall.

WILLIAM E. WEISEL SCHOLARSHIP FUND The William E. Weisel Scholarship, through the SME Foundation, will be awarded annually to a worthy full-time student seeking a career in robotics/automated systems.

Eligibility requirements are:

- must be a full-time student attending a regionally accredited school in engineering or technology, seeking a career in robotics/automated systems and having completed a minimum of 30 credit hours in a manufacturing/robotic/automated systems curriculum. (Graduate students will not be eligible for this scholarship)
- must possess a minimum gpa of 2.75

Deadline is March 1, 1991.

Information on how to apply may be acquired in the Student Financial Aid office, G-1 Parker Hall.

MYRTLE AND EARL WALKER SCHOLARSHIP FUND The Myrtle and Earl Walker Scholarship, through the SME Foundation, will be awarded annually to worthy students seeking a career in manufacturing engineering and manufacturing engineering technology.

Eligibility requirements are:

- must be a full-time student attending an engineering, technology or accredited trade school, seeking a career in manufacturing engineering and have completed a minimum of 30 credit hours in a manufacturing engineering or technology curriculum. (Grad students not eligible).
- must possess a minimum gpa of 2.75

Deadline is March 1, 1991.

Information on how to apply may be acquired in the Student Financial Aid office, G-1 Parker Hall.

THE RALPH J. BUNCHE HUMAN RIGHTS FELLOWSHIP PROGRAM, AMNESTY INTERNATIONAL USA Since its inception in 1961, Amnesty International has been at the forefront of the international struggle for human rights. Basing its work on internationally recognized standards, the organization works impartially for the release of prisoners of conscience, fair and prompt trials for political prisoners, and an end to torture and executions. In the last decade, Amnesty International has become a worldwide movement attracting the support of over 1,100,000 members in more than 150 countries.

Applicants for the Ralph J. Bunche Human Rights Fellowship should be members of traditionally recognized American "minority" groups, including African, Arab, Asian, Latino and Native Americans. Most applicants are college or graduate-level students in varied academic fields.

Application Deadline: March 15, 1991.

For more information and application materials contact the Student Financial Aid office, G-1 Parker Hall.

1991-91 ACT/FPS Available The ACT Family financial Statements for the 1991-92 academic year (Fall 1991 and Winter 1992) are available for students in the foyer outside the Student Financial Aid Office (G-1 Parker Hall). This form must be completed in order for a student to be considered for a Pell Grant, College Work Study, Perkins Loan, University Loans, Missouri Grants, the Stafford Student Loan Program, The Income Contingent Loan program and for the PLUS/SLS Loan Program for the 1991-92 academic year. First consideration will be given to those students whose ACT-FPS is received by the processing agency by March 31, 1991.

WOMEN IN ENERGY, INC. The Missouri Chapter of Women in Energy, Inc. has established a scholarship to be awarded each year to a full-time student of junior and/or senior standing attending a Missouri college or university. The recipients must be enrolled in a field leading to an energy-related career and show demonstrated professional potential. The award will be \$500.

Eligibility requirements: Junior or senior standing as of the following September, enrolled full-time in business, education, engineering, home economics, journalism, science or other field leading to an energy-related career, minimum overall GPA of 3.0

Deadline: March 1, 1991.

THE HEAVY CONSTRUCTORS ASSOCIATION OF THE GREATER KANSAS CITY AREA The Heavy Constructors Association of Greater

Kansas City is making two scholarships available, each in the

See Financial Aid, page 3

## Missouri Miner

The Missouri Miner is the official publication of the students of the University of Missouri-Rolla. It is distributed each Wednesday afternoon at Rolla, Missouri and features activities of the students of UMR.

All articles, features, photographs, and illustrations published are the property of the Missouri Miner and may not be reproduced or published without written permission.

The Missouri Miner encourages comments from its readers, and will attempt to print all responsible letters and editorial material received. All submissions must have a name, student ID number, and phone number for verification. Names will be withheld upon request.

Submissions for publication must be in our drop box (first floor of the Norwood Hall, Room 103) by 3:30 a.m. on the Thursday before publication. The Missouri Miner reserves the right to edit all submissions for style, grammar, punctuation, spelling, length, and matters of good taste.

The Missouri Miner is operated by the students of UMR and the opinions expressed in it do not necessarily reflect those of the university, faculty, or student body.

Editor in Chief	Larry Williams (364-1433)
Business Manager	Shelly Kaller (341-3394)
Asst. Business Manager	Connie Crossen
Advertising Director	Leslie Vigna (341-5386)
Asst. Advertising Director	Dan DeArmond
Subscriptions and Tearsheets	Dave Carpenter
Managing Editor	Matt Licklider (364-4841)
Circulation	Mike Matthews (364-1433)
News Editor	Steve Puljak (364-8968)
Asst. News Editor	Francine Belaska
Features Editor	Greg Denzer (364-8968)
Asst. Features Editor	John Humphrey
Sports Editor	Tom Hughes (341-8360)
Asst. Sports Editor	Tom Brown
Photo Editor	Dave Labiez (364-5226)
Copy Manager	Tim Emmerich (341-3951)

Staff Writers: Eric Hardin, Fred Stetkuehler, Matt McNett, Tom Brown, Gary Meyer, Kelly Bernal, Matt Tobey, Jeff Lacovich, Xpressers: Sylvia Avila, Kelly Bernal, Rachel Korg, Graphic Artists: Joe Jones, Michael Weiland, Advertising Representatives: Jeremy Buchanan, Kevin Miller, Barb Meder, Proofreaders: Tom Harris, Brooke Sander

103A Norwood Hall  
University of Missouri-Rolla  
Rolla, MO 65401 0249  
(314) 341-4235  
(314) 341-4312



# Jischke announced president of Iowa State

News Services  
SOURCE

Marvin Pomerantz, chairman of the Iowa State University Board of Regents, announced late today that Dr. Martin C. Jischke, Chancellor of the University of Missouri-Rolla, has been appointed President of Iowa State University. The appointment will become effective around June 1, 1991.

During a press conference held in Des Moines, Pomerantz made the formal announcement. Dr. Jischke was present to respond to questions from the media.

Dr. Jischke, a nationally recognized professional engineer and engineering educator, was appointed chancellor of the University of Missouri-Rolla on February 14, 1986 and assumed his duties there on April 28, 1986. The UMR campus, part of the four-campus University of Missouri system, had a Fall 1990 semester enrollment of 3,221 undergraduates and 1,042 graduate students. The campus has approximately 430 faculty and 670 administrative, service and support staff.

Jischke taught at Oklahoma Uni-

versity's School of Aerospace, Meas- sor and director of OU's School of Aerospace, Mechanical and Nuclear Engineering up to the time he was appointed dean of the College of Engineering at the University of Oklahoma in 1981. Jischke also served as interim president of OU from February until September of 1985.

Jischke is a member of numerous honor and professional associations, including membership in the American Society for Engineering Education, the National and Missouri Societies of Professional Engineers, and the American Institute of Aeronautics and Astronautics. Jischke is a Fellow of the American Association for the Advancement of Science. In November, 1990, he was appointed Science Adv- strengthened the fundraising abilities of the campus.

"As is true of all our chancellors," Magrath said, "Martin Jischke has run the campus efficiently and effectively. I hate to see him go, both professionally and personally, but it is a perfectly understandable career move for him." sor to the Governor of the State of Missouri.

He received the bachelor's degree

with honors in physics from the Illinois Institute of Technology in 1963; earned the master's (1964) and doctorate (1968) in aeronautics and astronautics at the Massachusetts Institute of Technology.

University of Missouri president C. Peter Magrath said late today of the appointment, "Iowa State University has made a superb choice for its presidency Martin C. Jischke has been a highly effective leader for the University of Missouri-Rolla and has helped to promote its further development as a state-wide technological university."

Magrath stated, "At UMR, Chancellor Jischke has focused on programmatic priorities critical to Rolla's mission. Among other things, he has, in effect, computerized engineering. He has also promoted the development of needed new facilities, including those for the performing arts, and has chanced and Nuclear Engineering from 1968 to 1975. He was a White House Fellow and special assistant to the secretary of transportation in 1975-76. Jischke earned a University of Oklahoma Regents Award for Superior Teaching in 1975. He served as profes-

## Financial Aid

from page 2

amount of \$2,500 for students pursuing careers in construction sciences. Requirements are:

- Shall be full-time students who demonstrate financial aid.
- Preference given to well rounded persons who are upper classmen, to Kansas City area residents, and to sons or daughters of construction employees.
- Applicants will be required to demonstrate their commitment to obtaining careers in construction.

Recipients will be required to seek summer employment in construction.

Deadline: April 15, 1990

Applications may be obtained in the Student Financial Aid office, G-1 Parker Hall. The application is to be turned in to the SFA office by April 15, 1990.

### AMERICAN ELECTROPLATER AND SURFACE FINISHERS SOCIETY SCHOLARSHIP PROGRAMS

The American Electroplaters and Surface Finishers Society offers separate scholarships for university or college undergraduates and graduates who demonstrate that their training (or research) is related to plating and surface finishing technologies.

Eligibility for Undergraduate Scholarship Program:

A student may apply for any academic year when he or she will be an undergraduate of at least junior standing in a chemistry, chemical engineering, environmental engineering, metallurgy or material science program where the focus of the curriculum is in surface science subjects.

Eligibility for Graduate Scholarship Program:

A student may be eligible if he or she has completed an accredited undergraduate program and is enrolled in a graduate program leading to a master's or Ph.D. degree.

Award selections will be based on, but not limited to: career interest in surface finishing, scholarship, achievement, motivation and potential. Awards are not necessarily based on financial need.

Application materials may be acquired in the Student Financial Aid office, G-1 Parker Hall. Deadline is April 15, 1991.

### NATIONAL ASSOCIATION OF WOMEN IN CONSTRUCTION ST. LOUIS CHAPTER

The St. Louis, Missouri Chapter of the National Association of Women in construction awards several stipends each year to young women and men pursuing degrees from universities and vocational colleges in fields related to the construction industry. Applications must be postmarked no later than April 15, 1991 to be considered.

Please note that the scholarship does not apply to first year students.

To receive an application, contact the Student Financial Aid Office, G-1 Parker Hall.

### INTEREST FREE LOANS FROM THE SCHOLARSHIP FOUNDATION OF ST. LOUIS

Qualified applicants who can demonstrate financial need will be considered for an interest-free loan. Applicants must be citizens of the United States or in possession of an Alien Registration Card and permanent residents of St. Louis, St. Louis County, or the Fox C-6, Francis Howell, Orchard Farm or St. Charles school districts. Interest-free loans are awarded in amounts up to \$3,000 per year.

For more information and applications, contact the Student Financial Aid Office, G-1 Parker Hall.

Application Deadline is: April 15, 1991.

## News from page 1

He has become the *de facto* leader of the various republics that seek autonomy, lending continuous support to the independence minded Baltic states. Were he to be removed from power, hard line communists will be rid of the major opposition that threatens their return virtual totalitarian rule over the Soviet Union.

Compiled from the Wall Street Journal, the New York Times, and the St. Louis Post Dispatch.

## Jischke from page 1

"I feel good about UMR", Jischke said. "The future of UMR as Missouri's great technological university has taken a definite direction and in the words of many is the "geni" of Missouri's higher education system."

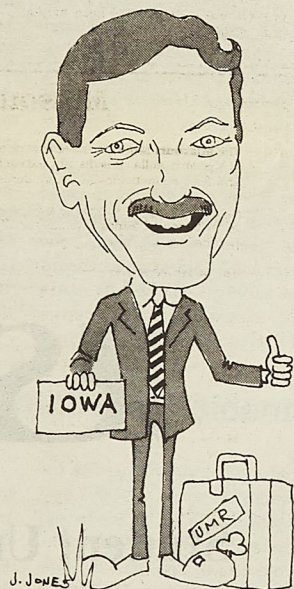
## University Theatre presents play

News Services  
SOURCE

"Whose Life Is It, Anyway?" — a two-act drama that deals with the issue of a person's right to die — is the University Theatre - UMR production for this spring.

The play will be presented at 8 p.m. Thursday through Saturday, March 7-9, at the Cedar Street Center, 7th and Cedar Streets in Rolla. Tickets cost \$2 each for students and retirees and \$3 each for all others.

Tickets may be purchased from 7-8 p.m. on each night of performance at the Cedar Street Center box office. The



house opens at 7:30 p.m. each night.

"Whose Life Is It, Anyway?" is the story of an artist, paralyzed in a car accident and kept alive by hospital life-support systems, and his struggle to win the right to end his life. The drama written by British playwright Brian Clark.

Margie Boston, UMR associate professor of drama, is the director, producer and set designer for the University Theatre-UMR production.

"Whose Life Is It, Anyway?" opened in the United States in the late 1970s. American actor Tom Conti won a Tony Award for his portrayal of the paralyzed patient, Ken Harrison.

## UMR's Greek System joins ANGLE

News Services  
SOURCE

The University of Missouri-Rolla's Greek Life System recently has been approved as a member of the Advocates for National Greek Leadership and Education (ANGLE) Network.

According to R. Mark Potrafka, UMR Student Services and Greek adviser, the ANGLE Network, which was organized by the Student Activities Office at the University of California-Irvine, is a peer education and wellness program that is designed for college and university Greek systems.

"There are about 40 campuses which currently are part of the network," Potrafka says. "The basic philosophy of this program is to give Greek students a peer-based approach to help them recognize the issues and challenges that face the Greek system today."

Potrafka explains that, in addition to UMR's Greek system, several UMR student organizations have endorsed the program including Panhellenic and the Inter-Fraternity Council (IFC).

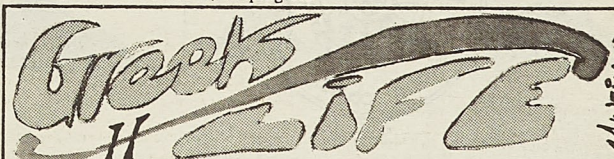
Jenni Peterson, a UMR senior in engineering management from Roxana, Ill., and a past president of UMR's Panhellenic organization, says, "UMR has not had a program like this in the past and I believe that once students become acquainted with it they will become involved and by doing so will benefit from it."

Goals for the ANGLE Network program at UMR include: 1) providing students with the social, emotional, and academic support of a network of educated peer facilitators; 2) developing

and empowering student leaders through participation in a peer education program that will increase awareness and knowledge of wellness issues; 3) networking campus departments together to teach students wellness topics and leadership skills that include such topics as drugs and alcohol, self esteem, sexual awareness, and healthy lifestyle choices; and 4) helping stu-

dents with early identification of peers with alcohol or other problems, and referring those students to the proper campus resources.

Potrafka adds that a steering committee is being formed and will work this semester to gather information in order to start the program beginning with the 1991 Fall Semester.



## LET AAA TRAVEL AGENCY

Help you in planning your ☆Spring & ☆Summer Vacation

Call 364-1117  
1-800-678-7025

1056 Kingshighway  
Rolla



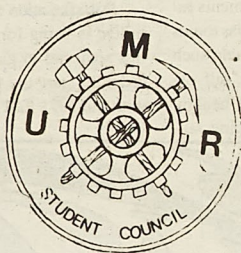
# PRE - St. Pat's FOOD FEST!

## Activities Include:

- Free Food Served from 11:30 am to 1:30 pm
- Contest to see which student group can make the best "mocktail"

**MARCH 6**

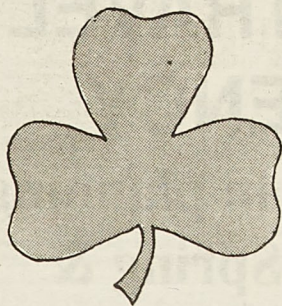
**Mall between University Center-West and Library**



**Student Council**



**Student Union Board**



**St. Pat's Board**



**Panhellenic**



**Inter-Fraternity Council**



# Comments

## African - Americans deserve their due

The viewpoint presented in your February 13, 1991 article titled, "Race-based scholarships against public policy" was a classic example of what is commonly referred to as "white backlash." The columnist's arguments were akin to those presented by Sen. Barry Goldwater, 1964 Republican nominee for President, who "could not condone or support" civil disobedience, boycotts, and demonstrations by civil rights supporters because such actions "hardened" hearts and led to more violence and government intervention in private situations.

How soon we have forgotten. From its inception in 1787, the U.S. Constitution could have provided "justice and equality for all" had "all" been interpreted to include more than just white males. For if such had been the case, there would not have been a need for the Civil Rights Act of 1964.

Is it possible that the African-American race, who having struggled for 188 years to be included in the law, now be as alleged "above the law?" True "intellectual honesty" would reveal that this claim is ludicrous.

Benjamin Hooks, chairman of the NAACP, and other active participants in the on going struggle for Civil rights are fully cognizant of the fact that every word of legislation that has been enacted which has improved the standard of living of African-Americans has not come about as the result of "passive waiting for the majority to grant them." This progress has been realized by persistent "pressure and agitation."

Therefore, it should come as no great surprise where an attempt to "turn back the clock" is met with open rebuke.

Persons whose support for civil rights has been subdued as a result of backlash should honestly question their initial resolve. Shamefully, many of these same people espouse Dr. King's "judged not by the color of their skin, but by the content of their character;" as justification. Surely, the travails of our people are comprised of much more than our illustrious Dr. King's most notable oratory, "I have a Dream." For it was Dr. King who wrote:

"A society that has done something special against the Negro for hundreds of years must now do something special for him in order to equip him to compete on a just and equal basis."

The U.S. Department of Labor's "Workforce 2000" report indicates that people of color are expected to represent a larger proportion of the future labor force's new entrants. These projections also indicate that there will be a shortage of over 500,000 qualified engineers in the U.S. Current trends suggest that this shortage will not be offset by the American white male population. If American industry hopes to survive in a global marketplace it must tap every reservoir of talent available. Today, African Americans make up 11.5 percent of our nation's 5.5 million engineers and scientist. As long as such disparity exists the words of Lyndon B. Johnson

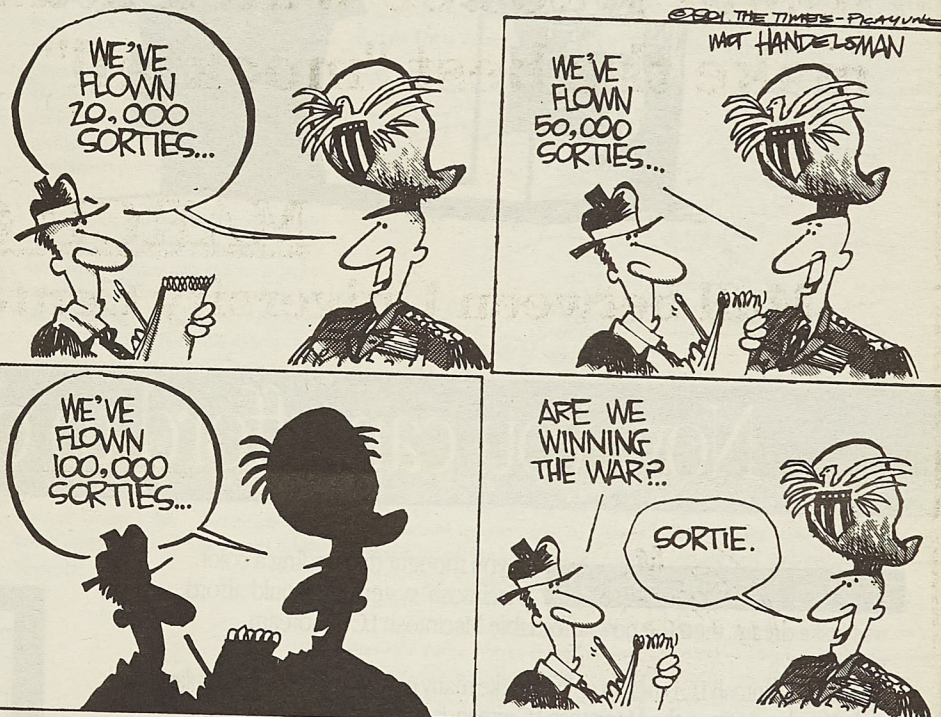
still ring clear. In 1965, it was Pres. Johnson who wrote:

"It will not be enough to provide better schools for Negro children, to inspire them to excel in their studies, if there are no decent jobs waiting for them after graduation. It will not be enough to open job opportunities, if the Negro must remain trapped in a jungle of tenements and shanties. If we are to

have peace at home, if we are to speak with one honest voice in the world—indeed, if our country is to live with its conscience—we must affect every dimension of the Negro's life for the better."

Thomas Perry of the Forum Syndiccate, I strongly suggest that through research and deep contemplation should you proceed in any attempt to address an issue which affects the

lives of so many. We can only pray that your opinions aren't representative of the majority of persons here at UMR. Respectfully,  
Gary L. Penny  
C/O  
J.W. L.B.L. (Lover of Black Leaders)



### King more important than Presidents?

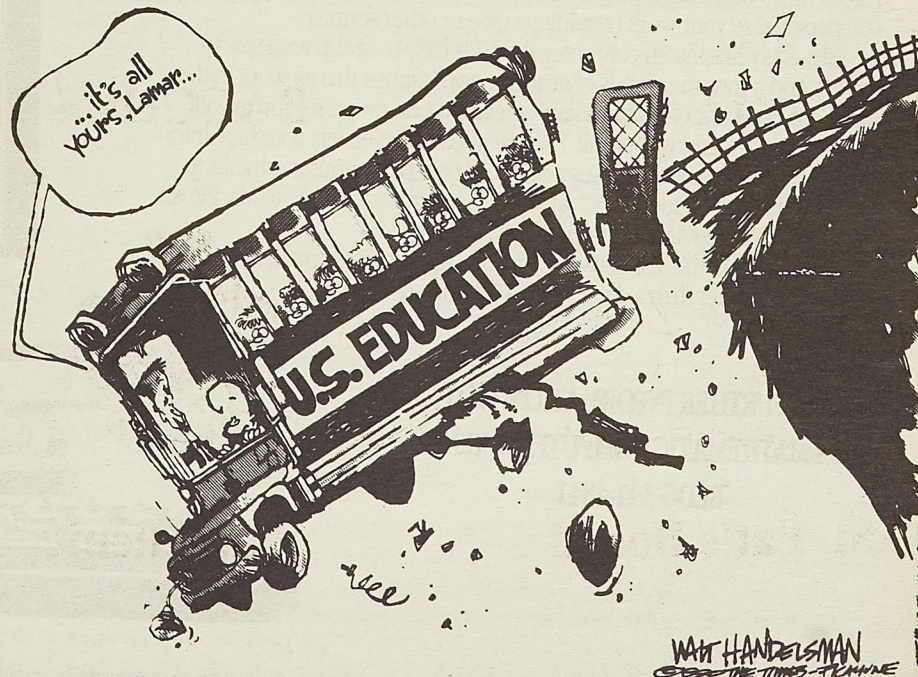
Dear Students of UMR,

Don't you find it surprising that we are not given President's day off, yet had Martin Luther King Day off? Why is this? Both are national holidays and most other schools get the day off. I personally find it very shocking that we have a day off in remembrance of a great civil rights leader, but not a day off to honor all of the great men who have led this country.

I agree that Martin Luther King Jr. played a major role in the battle for civil rights, but his contribution can in no way equal that of the 41 men who have

led and guided this country for more than 200 years. Especially during this time of war, I think that we need to stop and remember our country and the men who have enabled us to achieve this greatness. Instead, the policymakers at UMR have decided to ignore our Presidents' contributions.

I think that it is appropriate to honor these men, but we need to do it fairly and equally. We should get either both days off or neither day off. The way that the calendar was planned this year, it appears that Martin Luther King is more important than our presidents. I don't feel that that is true.



If you have opinions contrary to these printed above, or simply have another issue you believe needs to be addressed, your submissions are welcome. Deadline is the Thursday preceeding the issue date at 3:30 pm. Submissions should be placed in drop box located at 103A Norwood.





Here's looking at



THE NATIONAL COLLEGE NEWSPAPER

Featured in the March issue:

- Robin Williams
- Impending Faculty Shortage
- How To Get Out Of Debt From Student Loans

PLEASE HELP US RECYCLE

## Now you can afford to dream in color.

Apple introduces the Macintosh LC.

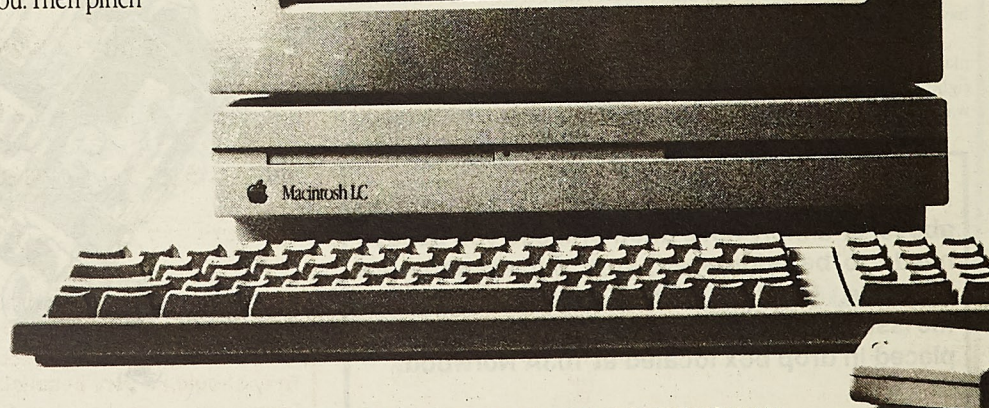
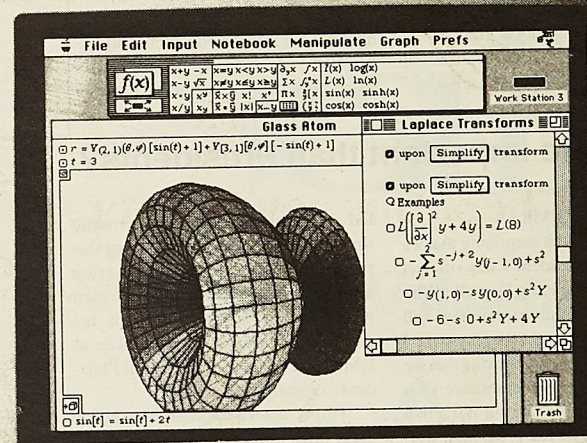
If you thought that finding a color Macintosh® system you could afford was just a dream, then the new, affordable Macintosh LC is a dream come true.


The Macintosh LC is rich in color. Unlike many computers that can display only 16 colors at once, the Macintosh LC expands your palette to 256 colors. It also comes with a microphone and new sound-input technology that lets you personalize your work by adding voice or other sounds.

Like every Macintosh computer, the LC is easy to set up and easy to master. And it runs thousands of available applications that all work in the same, consistent way—so once you've learned one program, you're well on your way to learning them all. The Macintosh LC even lets you share information with someone who uses a different type of computer—thanks to the versatile Apple® SuperDrive™, which can read from and write to Macintosh, MS-DOS, OS/2, and Apple II floppy disks.

Take a look at the Macintosh LC and see what it gives you. Then pinch yourself. It's better than a dream—it's a Macintosh.

FOR FURTHER INFORMATION VISIT  
114 MATHEMATIC COMPUTER SCIENCE  
BLDG 341-4841



 The power to be your best.™

© 1990 Apple Computer, Inc. Apple, the Apple logo, and Macintosh are registered trademarks of Apple Computer, Inc. SuperDrive and "The power to be your best" are trademarks of Apple Computer, Inc. MS-DOS is a registered trademark of Microsoft Corporation. OS/2 is a registered trademark of International Business Machines Corporation.



# Features

## The invasion approaches Snakes 1000 Freshman 0

By Matt Tobey  
STAFF WRITER

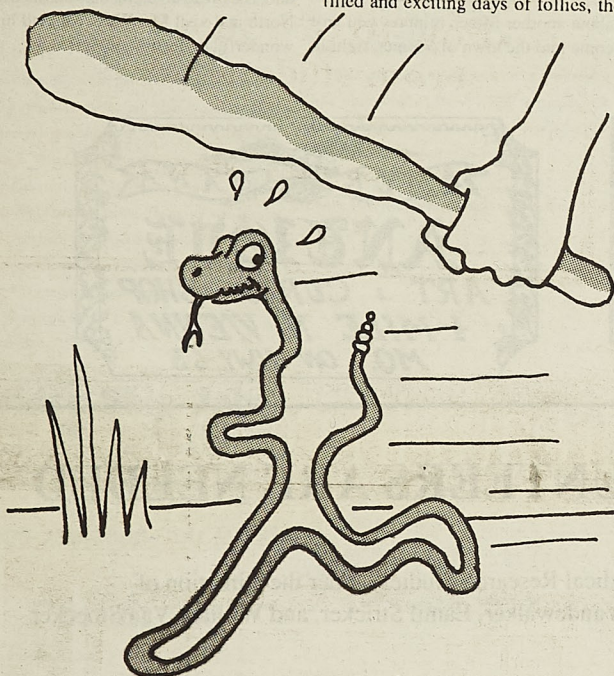
With St. Pat's only 15 Daze away, anticipation is rising for this year's Celebration. Snake invasion will be-

gin this upcoming Monday, so all the Freshmen need to have their shillelaghs with them on campus to help rid UMR of this terrible menace. Then on Monday, March 11 the Follies will begin at the Hockey Puck at 12:30. After fun-filled and exciting days of follies, the

St. Pat's Celebration explodes on Thursday and Friday (March 14 and 15) with the Gonzo & Games. The Coronation and Student Knight Ceremony are that Friday night with fabulous St. Pat's Parade the next day. The parade is followed directly by Knighting Ceremony called "ALICE" and the REO Speedwagon tops it all off in the grand finale concert sponsored by SUB and the St. Pat's Board. Exact times for these and many more events will be included in the Student Green Bibles available this week at the Hockey Puck.

Also, Gonzo buttons are on sale and going fast at the Hockey Puck. They cost three dollars and are your ticket into not only Gonzo on Thursday, but also to the Games on Friday. And when you head out to both the Gonzo and Games be sure to ride the busses from any one of the convenient locations.

Get into the spirit of things UMR and be sure to stop by the Puck and get your 1991 St. Pat's Green and your free Student Green Bible. Get ready because there's only 15 Daze until it all begins!!!



J. JONES  
02-25

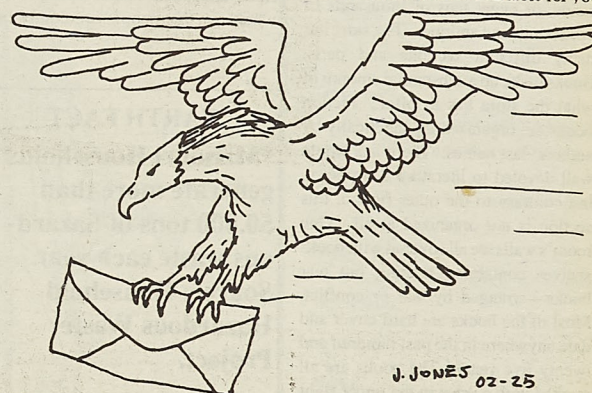
## Electronic mail service offered to Persian Gulf

By PKT and APO  
SOURCE

With the threat of a ground war and an air war already in full swing, a lot of people are worrying about friends and loved ones in the military branches in Saudi Arabia. With this in mind, Phi Kappa Theta Fraternity and Alpha Phi

unit's address for war time mail. You must have all this information to use the service and it must be correct so the letter can be sent. The letter can be no more than 40 typed lines and will be kept totally confidential.

The times and places for the service are Monday-Friday from 2:00 to 5:00 p.m. at the UMR Library on the main floor with assistance available for your



J. JONES 02-25

Omega are creating an Electric Mail service to the Persian Gulf. This service is being offered for use to all UMR students and teachers free of charge. The service will be located at the UMR Library and Math/Computer Science Building (room 104).

To use the service, you need the person's name, rank, social security number, unit or ship, and FPO or APO (same as UPO) number. The FPO or APO number is the zip code of the

questions and at the Math/Computer Science Building (room 104) from 12:00 to 10:00 p.m. as the computers are available. (See help desk in Room 104 for disc with program. They will help you set it up.)

Phi Kappa Theta and Alpha Phi Omega invites anyone to use the service and will be glad to give assistance or answer questions for any using the system. The service will run all this semester until the war is over.

## GDI to host Blarney Rocker

Mark Ochs  
Independents of UMR (GDI)

On Wednesday, of St. Pat's Week, March 13, 1991, GDI will host the first annual Blarney Rocker. As soon as you get out of classes, this is the place to go. The festivities will start at approximately 1:00 p.m. at the Lion's Club Park and end around 6:00 p.m. Live music will be provided by Flashback, a really hot local band. Shuttlebuses will run from the EE parking lot and the Multi-Purpose Building to and from the park throughout the day. Cups will go on sale about a week before the event somewhere near the hockey puck and will cost \$4.00 in advance and \$5.00 at the buses. You must have a cup to get on the bus and into the Blarney Rocker, and don't forget to bring some ID. Soda will be available for those who are not of age. There will be no parking allowed at Lion's Club Park, so we would encourage everyone to ride the buses. This is going to be

a real blast so tell your friends about it. The number of cups is limited so be sure to get yours early.



J. JONES  
02-25

## EIT Review Sessions Schedule

Room	Time	Date	Instructor	Topic
H-SS G-5	7:00pm	2/26	Dr. Munger (CE)	Eng. Economics
CE 117	7:00	3/5	Dr. Cunningham (EE)	Elec. Circuits
CE 117	7:00	3/21	Dr. White (Bas. E.)	Statics & Dynamics
CE 114	7:00	3/26	Dr. Herring (Math)	Mathematics
CE 114	7:00	3/28	Dr. Morris (CE)	Fluid Mechanics
H-SS G-5	7:00	4/9	Dr. Sheffield (ME)	Thermodynamics
CE 117	7:00	4/11	??	Mech. of Materials

EIT Exam - Saturday, April 13, 1991

Review session handouts will be available at the review sessions.

Those taking the EIT are encouraged to attend these review sessions. They should be very beneficial.

Organized by the American Society of Civil Engineers Student Chapter & Chi Epsilon



# Looking for some diversity around Rolla? Try this shop

By James Barnes  
STAFF WRITER

When Sunday finally caps off the weekend, what do you feel like? Usually there are a million and one things that need to be done, but motivation seems to always be in absence. Of course, there are a couple of chapters that need to be read for class, but hey, there are always a couple of chapters that need read for class. There is a place, not so far away from here, that can cure your Sunday blues.

About twenty minutes away, there is a store called Americana. It isn't your average marketplace with all new products. This store contains thousands, or even, tens of thousands of used books and antiques. The store has many different sections and parts. Books make up a substantial amount of what the store has to offer. Fiction books are organized alphabetically by authors' last names. There is a whole wall devoted to literature and poetry, but contrary to the other fiction, this section is not organized at all. One room's walls are all covered with bookshelves containing nothing but war books—arranged by war or conflict. Most of the books are hard cover and date anywhere in the past hundred and twenty-five years. The books are all marked with a price in the upper right of one of the first pages. Prices vary from book to book. Last weekend I got a book entitled Selected Poems and

Tales of Edgar Allen Poe. The book was dated 1914, and only cost three dollars.

The only thing is kind of a hassle, is that all of the books are double stacked on the shelves; you can't just glance at the outer ones if you want to find a hidden treasure. The literature and poetry section is located in a garage to the left of the actual house, or store — the owner, John Viessman, lives in the same place.

Out behind the house there is huge barn filled with most of the fiction books, a collection of Life magazines dating from the thirties up, and all kinds of antique tools. The Life magazines are very interesting to look at, and all are priced under ten dollars apiece. The owner says that people sometimes like

to pick out a life magazine from the month that they were born.

Inside the main house is all sorts of stuff; old cameras, old war uniforms, old knives, etc... The coolest place in

the house is the "war room." The walls are filled with non-fiction books on any war you can think of. A table in the middle of the room contains war relics like civil war pistols and Nazi memorabilia—one of the civil war guns is

priced a little out of my range at over six hundred dollars. Combat helmets from

American, French, British, hundred dollars. Combat helmets from American, French, British, and German World War II troops can be purchased for about forty-five dollars.

The owner used to teach history in public schools, but has since taken a job with the county public works department. The best time to catch him at home is on Saturday or Sunday. Get a couple of your friends together and take a drive up to see what he has. The directions are easy; get on 63 north like you are going to go to Jefferson City after about fifteen minutes you will pass an airport and then go through the town of Vichy, keep going on 63, after

about another fifteen minutes you will come into the town of Vienna, right in

the middle of town there will be a flashing red light where the highway that goes to the lake intersects 63, a USA convenience store will be on the left, the store you want is about another 1/4 to 1/2 mile up, it is located on the right, a sign is hanging out in front that says "Americana," a red torpedo is also hanging from the sign. Mr. Viessman is very nice, and will show you where to look for something particular; he will probably show you some other stuff too. If you are a foreign student, and want to get some authentic American culture, check out the store.

The next time you are sitting around with lots of things to do, but don't desire to do them, take a little trip North and visit Mr. Viessman and his wonderful collection of stuff.

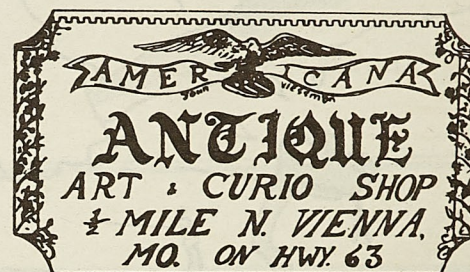
**EARTH FACT**  
\*Missouri Households generate more than 50,000 tons of hazardous waste each year.  
Source: Household Hazardous Waste Project.

In the next issue of:



THE NATIONAL COLLEGE  
NEWSPAPER

- Robin Williams
- Impending Faculty Shortage
- Get Out Of Debt From Loans



## PAID VOLUNTEERS ARE NEEDED

For Current Medical Research Studies Under the Direction of  
Drs. Wes Stricker, Mark Vandewalker, Eamil Stricker, and William Van Stoecker

### ASTHMA

- \* Testing a new aerosol bronchodilator, Fluticasone, for 3 months
- \* Participants must be ages 12 or older
- \* Participants must have mild to moderate asthma or suspected asthma (Off and on coughing, sheezing, or shortness of breath)

- \* All medications are approved and maintained for testing by the Federal Drug Administration
- \* All medications and projects monitored by a Medical Review Committee
- \* All medical examinations, medications, tests and office visits are at no charge to participants.

Participants will receive a monetary stipend for their participation.

CLINICAL RESEARCH OF THE OZARKS, INC.  
509 E. 10th STREET, ROLLA, MISSOURI 65401  
364-7777 ASK FOR VICKI OR ROBIN

YOU HAVE FRIENDS WHO CARE  
AT...

**BIRTHRIGHT**

PHONE: 364-0066

215 WEST 8th STREET  
P.O. BOX 832  
ROLLA, MISSOURI 65401

FOR HELP  
DURING UNPLANNED PREGNANCY  
FREE PREGNANCY TESTING  
NEW EARLY DETECTION METHOD

**ALEX'S PIZZA PALACE**  
Real Italian Pizza  
122 W. 8th St.



Open 7 Days a week

11:00 AM - 2:00 AM Fri & Sat

11:00 AM - midnight Sun - Thur

Call For Delivery  
or Take Out

**364-2669 or 364-9878**

Salads Sandwiches Pasta

5% Beer on Sunday

**SPECIALITIES**

Gyros Souvlaki Steak

Greek Salad Spinach Pie Baklava



# Classifieds

## Miscellaneous

**Organizations: Time is running out!!!** Schedule your group photo with the Rollamo now! Call 341-4279 or 364-2550, or you can drop a note in campus mail. Give us one week's notice please.

**Attention:** Will pay \$20 each for used Freshman Engineering books. 341-4970. Contact Eugene.

**Southwinds is accepting Poems,** short stories, photographs and drawings. Please bring to the English Dept. in HSS. (all photos and drawings will be returned for information call 341-4681.

**STUDENT CALLERS NEEDED!** The Phonathon office (10 Farrar Hall in the Quad) is still hiring students to call alumni and parents. Callers are needed from 6:30 to 9:30 p.m. Monday through Thursday nights through out the school year. Callers sign themselves up for the nights they are available. Requirements for the job which pays \$4.75 per hour are: \* Good clear English\* Enthusiasm and friendliness\* Promptness and dependability\* For more information or to apply, contact the phonathon office. at 341-6376. Or stop by 10 Farrar Hall.

## Cruise Ship Jobs

**HIRING Men - Women, Summer/Year Round. PHOTOGRAPHERS, TOUR GUIDES, RECREATION PERSONNEL.** Excellent pay plus FREE travel. Caribbean, Hawaii, Bahamas, South Pacific, Mexico. **CALL NOW!** Call refundable. **1-206-736-7000, Ext. 600N1**

## Personals

**Hey Psycho-Killer,**

Ya think we could get Boots into that suit?

L.y

**Hey Kuta,**

Is that your Dustbusting Suit?

The Cartographer

**Tigris,**

Be careful! Revealing your animal nature might bring on a swarm of she- Tigris....

Deryn

**Ruggers,**

Good Luck Saturday at Langenberg State Intercollegiate championships.

Only 15 Daze until the St. Pat's Board stops asking if I've bought my green!

Down, not , to bat

**Net Bunnies?**

**SMACK,**

(You know who U R)

**Bhong,**

I'll be careful

**Bamf!**

And another thing.....

**Baker,**

We sure had you scared! And your first guess was even right!

K & L.

**Broomhead!!!**

(With a capital B) -P

**For the last time,** Mat and I are not involved. (Well, as far as you'll ever know. Hch Hch)

**Roomie,**

I love ya', but next time read the directions on the Drano can before you use it :)

**Tau Beta Pi Pledges,**

Bent polishing will be held at Pi Kappa Alpha Fraternity on Friday, March 1, 1991 starting at 7:00 p.m. Refreshments (pizza and carbonated beverages) will be provided. Get psyched!

**I hate Thermo with the Red.** Hot intensity of 1000 suns!

**Nick,**

Tell me we're not lost!

**Eric,**

What a hoe!

D & L.

**I still like "BAMF"** The fuzzy Elf better:P

**OY!** Right back at ya!

**Thirsty,**

Just rember .....it's just temporary!

Q

**Thirsty,**

I'm so sure, dumping your little brother for Amy

**Stacey,**

Thanks for a great time in W.R. You are welcome to come over and finish the Baileys anytime. I sure hope the houseboat police don't come looking for us.

**Carp,**

Happy Birthday toa great little brother!

Love,  
YBS

**Thirsty,**

How was your weekend? What is Armay? Spindle #1, #2, #3, or #4,?

Q.

**Karen,**

Thanks for cheering me up on my birthday! (but I still think you are a nerd!)

Love,  
Laura

**Laura,**

Call me sometime.

You know the number.

**Eric P.**

I had fun, but let's do something where we can talk next time, okay?

**Amy,**

Happy 21st Birthday! I was going to get you some crickets, but you already bought some! Hehehe...

Love,  
Mosquito

**Pat B.**

Sike!

Karen & Laura

**Dear John,**

We talked to the landlord and now we get the whole house! (We have to pay more to use the bathrooms, though)

Your Snotty friends

**Sleepy,**

Where have you been lately? You have been awfully scarce!

Curious

**Keith B,**

Are all Sig-Eps as good looking as you?

The see-saw marathon is in the fall!!!

**Ter,**

I know the sayingh goes "If at first you don't succeed try and try again", but I'm sick of trying.

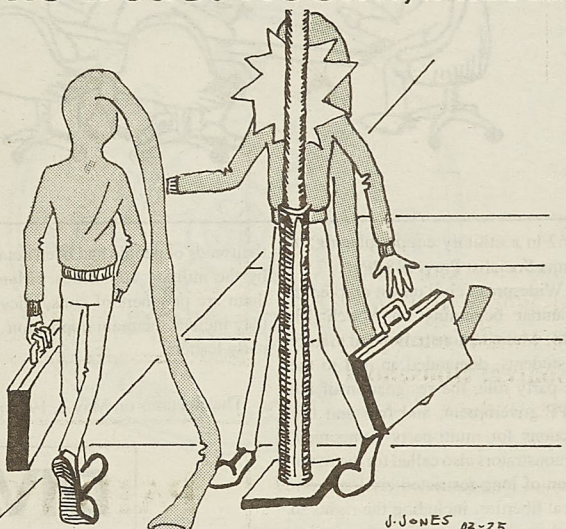
Charge

**Amy and Jennifer,**

Thanks for listening.

Charge

## The Beast Room by Jones and Griff



## THE SHORT-LIVED GIRAFFE NECK SWEATER

And when the man opened the first seal, I saw the first horse, the horseman had the book.....

Thirsty,  
Quenched?

OY!

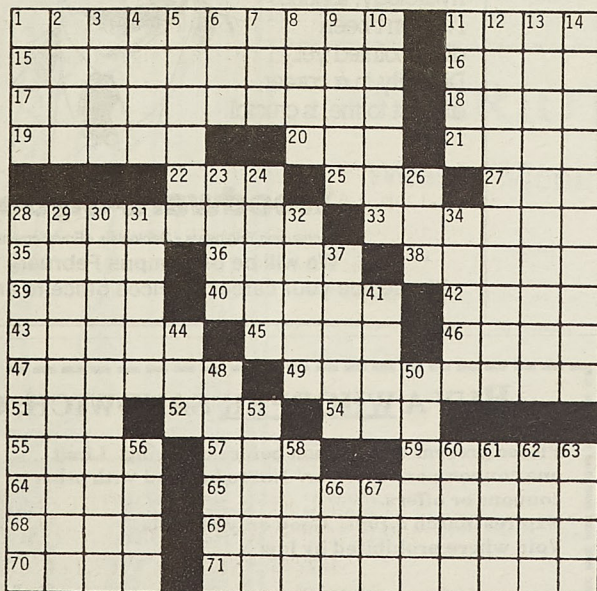
"Green" season starts next week. The limit is one rep per person. He he he.

**Thirsty, (A.K.A. Mario)**

I want a rematch.

Elmer "Spoo" Fudd

## collegiate crossword



© Edward Julius Collegiate CW79-28

### ACROSS

- 1 Strobes
- 11 Prefix for distant
- 15 Sorrow for guilt
- 16 Peter or Moses
- 17 Kind of domestic commerce
- 18 Lends a hand
- 19 Scatter
- 20 Sault — Marie
- 21 Benchley's "The —"
- 22 Suffix for count
- 25 1776 and 1976 (abbr.)
- 27 Hindu title
- 28 Official Vatican reply
- 33 White-blossomed plants
- 35 Have an — grind
- 36 Cheers
- 38 Actor Guinness, et al.
- 39 Do a pullup
- 40 Burst forth
- 42 Actors' organization
- 43 Highland garb
- 45 Eastern ruler
- 46 Wearer of 43-Across
- 47 Queen of mystery
- 49 "I have — before..."

- 51 Playing marble
- 52 Command to Lassie
- 54 Well-known movie studio
- 55 Of a time period
- 57 Gad's son
- 59 A word — wise...
- 64 "...I could — horse!"
- 65 Gem workers
- 68 Map abbreviations
- 69 Throw into confusion
- 70 Spanish painter
- 71 Portable weighing devices
- 12 Motionlessness
- 13 Subordinate cast member
- 14 Thicken
- 23 "Your majesty"
- 24 Bowling term
- 26 Latin possessive
- 28 Extortionists, e.g.
- 29 Refresh
- 30 Site of Oklahoma State University
- 31 Actor Richard —
- 32 Hitchhike
- 34 Battle
- 37 Peeping Tom
- 41 "Star —"
- 44 Upperclassmen (abbr.)
- 48 Obeys a traffic sign
- 50 None (2 wds.)
- 53 Characteristic
- 56 Endure
- 58 — dixit
- 60 Killer whale
- 61 Row
- 62 Nickname for Woody Herman's orchestra
- 63 Approximations (abbr.)
- 66 Slangy jewels
- 67 Monetary abbreviation

### DOWN

- 1 Chemistry and physics (abbr.)
- 2 Bridge: Fr.
- 3 —'acte
- 4 Raison d' —
- 5 Dresser part
- 6 Fleur-de —
- 7 Lawyer (abbr.)
- 8 Actress Farrow, et al.
- 9 Toilet, to a child
- 10 Given to scoffing
- 11 "My goodness!"



# Amnesty International expresses concern for human rights in Burma

## Amnesty International SOURCE

March 13, 1991 is a very special day for the people of Burma. This date marks the anniversary of the first student activist killed by government security forces. During the late 1980's, the people of Burma experienced a brutal crackdown on individual freedoms and human rights. This crackdown was the government's response to pro-democracy protests.

This crackdown was a government system of arbitrary arrest, detention without trial, torture (including electric shock treatment), and summary executions. Today in Burma, the student activists run the risk of death and torture everyday.

March 13th is the Burmese people's Human Rights Day. The AI chapter at UMR will not be joining the hundreds of other Midwestern students in simultaneous silent vigil on this date because the proximity to the upcoming St. Pat's celebration would be inappropriate and not conducive towards the gravity of the situation. However a petition will be set up by the Hockey Puck.

The following is a brief background on Burma. If you have further questions, either about Burma, Amnesty International, or how to become a member, please call Chien 341-9427.

### Background on Myanmar (Burma)

Myanmar is located in Southeast Asia; between India and Thailand. It has a population of 39.4 million. The predominant religion is Buddhism; additional religions include Islam and Christianity. The country was ruled by the British from 1885 until independence in violent clashes with police and soldiers, but most of those killed were reportedly shot dead while participating in peaceful protests, or died later as a result of their wounds. Torture has been characterized as systematic and wide-spread in the continuing suppression of political opponents.

In July, 1988, General Ne Win resigned as head of state in the face of continuing unrest. However, there were further demonstrations during the short term of office of his successor, U Sein Lwin, who was himself replaced by a civilian, Dr. Muang Muang, after further widespread killings of demonstrators.

The unrest continued until the army again took direct power in a coup on September 18, 1988. Hundreds of people were shot in the weeks follow-

ence in 1948. (In June 1989, the name of the country was changed from Burma to Myanmar.)

General Ne Win seized power in multi-party system with a single party state, ruled by the military-dominated

marred by renewed repression. Within a few months of the coup, many leaders and supporters of the newly registered political parties were arrested and imprisoned.

By mid-1990, hundreds and perhaps

thousands of people had been detained by the military authorities. Many of them are prisoners of conscience and they include the main opposition party leaders.

The elections on May 2, 1990 pro-

duced an overwhelming victory for the National League for Democracy, the predominate opposition party. However, the military has to date refused to relinquish power and continues to systematically detain, torture, and kill anyone suspected of opposing the government.

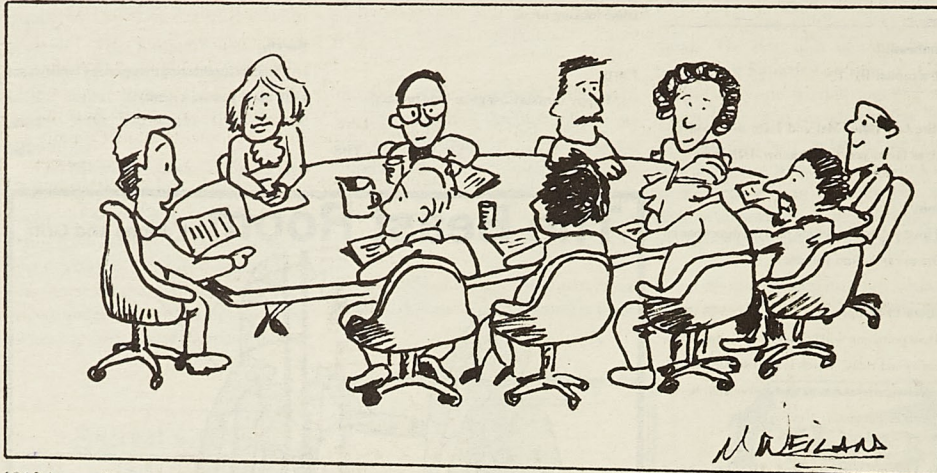
Amnesty International recommends the following measures to end the widespread human rights violations evidenced in Myanmar.

1) All prisoners of conscience detained solely for their peaceful expression of their opinions should be immediately and unconditionally released. The legal basis for all arrests should be clarified. Political prisoners charged with a criminal offense should be brought to trial fairly, and promptly or be released.

2) The authorities should order an impartial inquiry into all allegations of torture. Criminal proceedings should be initiated in cases where there is evidence of involvement in torture. Victims of torture should receive redress and compensation.

3) The authorities should initiate an impartial and independent inquiry into reports of thousands of extrajudicial executions by the security forces. The findings of this inquiry should be made public and criminal proceedings brought against those found responsible. Victim's families should receive redress and compensation for the deaths.

4) Amnesty International urges the authorities to affirm their commitment to respect for human rights by ratifying the International Covenant on Civil and Political Rights and the United Nation Convention Against Torture.



## DIVERSITY, VARIETY, CHALLENGE

"An unchallenging 8-to-5 job? I couldn't do that."

I came to Woodward-Clyde to work on a diversity of water resource projects - water quality, hydrology, fisheries - I haven't been disappointed yet. Diversity in a career, at least to me, is crucial.



At Woodward-Clyde you can find variety, diversity, challenge. More importantly, they encourage it; they make it worth it. I can't imagine working any other way.

Eric Strecker,  
Senior Project Scientist

**Woodward-Clyde**  
is People!

**Woodward-Clyde**

Consulting Engineers • Geologists • Environmental Scientists

We will be on campus February 26, 1991.

Please see your career services office to arrange an interview.

## BUY A WHOPPER SANDWICH, GET ONE FREE

Please present this coupon before ordering. Limit one coupon per customer. Not to be used with other coupons or offers. Expires March 5, 1991 Good only at Rolla Void where prohibited by law



SOMETIMES YOU'VE GOTTA  
BREAK THE RULES.

1991 BURGER KING CORPORATION

**International Tours, Travel Agency of Rolla**  
1023 Kingshighway Rolla, MO 65401  
Call Rick, Chris, or Melissa  
Your one stop!  
For complete travel planning (314) 341-3300  
Foreign or domestic! → Business or pleasure! 1-800-876-3331



# Notes from the last Student Council meeting

By Matthew Zion  
Student Council

The president, Luke Peterson, opened the meeting at 6:30 p.m. in G-3 of the Chemical Engineering Building. The Council approved the minutes of the previous meeting without amendment.

In the officers' reports, the president announced that the plans for the new fitness and wellness facility to be constructed on campus have been completed and are now on their way to Chancellor Jischke for approval. If

they pass the Chancellor's desk, they will be sent to the Curators for final approval. It is hoped that the plans will be completely approved by May and that construction will be underway in two years. The president also highlighted some on-campus events, including: William D. Phillips' speech on U.S. technology policy and foreign competitiveness on Friday, March 8 at 4:00 p.m. in the Mark Twain Room, University Center East; and "A Look at Sex in the 1990's" in East Centennial Hall of the University Center East on February 20 at 7:00 p.m.

The vice-president of external af-

fairs announced tentative plans for an Ad-Hoc committee, which would include Student council, ASUM, and others, concerning moves by the University system which would increase tuition by 100% by 1995; he promised more information soon.

He also announced a plan to rework the current billing structure, which would simplify the billing and make the line items more understandable. Several current items would be compressed into a single item, thereby making the schedule of charges easier to

the Board. The Board is particularly looking for underclass men who, over the course of their membership, would develop an expertise in the workings of the Board.

In New Business, Bill 9091M7, a bill dealing with the bylaws of External Funding, passed without amendment. This bill deleted wording from the Stu-Co bylaws which assigned SAFB duties to the External Funding Committee. This bylaw was written before SAFB was created and the extraneous wording was therefore obsoleted.

## Walk for health and charity

IFC/Blue Key  
SOURCE

Walking is the most natural function of the human body. Because of the structure, shape, and flexibility of the spine, the body is better off walking than sitting, standing or running. Here are a few more facts about walking:

Approximately 80 million people walk for physical exercise.

The average person walks 115,000 miles in a lifetime.

Fast walking (3-5 miles an hour or more) actually burns about 100 more calories than jogging at the same rate.

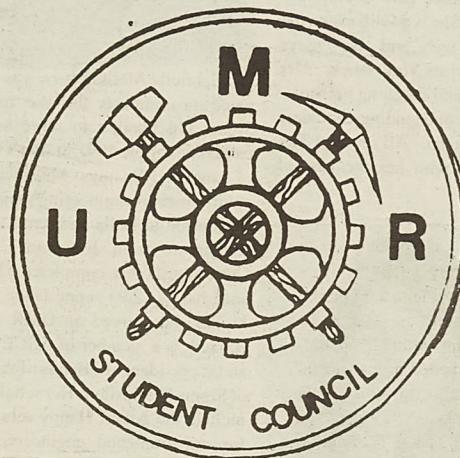
Walking increases circulation and improves cardiovascular efficiency.

Muscles are flexed 1500 to 3000 times during every mile walked. More than almost any other exercise.

Walking tones and strengthens calves, thighs, ankles, and feet. It also tones arms, shoulders, abdomen, hips and buttocks.

A brisk 10 minute walk can improve your mood and raise your energy level.

The Super Cities Walk being held on April 7th would be a great way to help those with Multiple Sclerosis, have fun and get some exercise. Watch for future Miners with more information.



deal with.

Under the vice-president of internal affairs' report, the Student Services committee announced a graffiti contest which is currently in the planning stages. This contest, a cooperative project between the Stu-Co Student Services Committees and TJHA, would include graffiti projects in the TJ Tunnel under a set theme. The work would be judged and prizes given.

The treasurer announced that the Student Activity Fee is looking for new "associate members" to fill their ranks. These members would basically be observers in the beginning, learning how the Board works and the procedures they use. These members would then "graduate" into higher positions in

The next item which was addressed was an Equipment Fund request by the Student Union Board, which was requesting funds in the amount of \$2,983.60 for a MacIntosh system to replace their aging IBM system, which was inadequate to handle their needs. Although a motion to amend the request to handle the entire cost of the system (\$5,127.60) was made and seconded, it failed, and the original request was passed as proposed.

The last agenda item, an Equipment Fund request from KMNR for \$272 to pay for eight cart racks, passed without amendment.

The meeting adjourned at approximately 7:15 p.m.

## SCHLUMBERGER FIELD ENGINEERS

### DON'T:

- wear suits and ties
- shuffle papers
- answer phones all day
- sit at a desk

### DO:

- take charge
- work long hours
- assume heavy responsibility
- work outdoors
- make decisions
- face many challenges and risks
- perform data acquisitions and measurements of physical properties of subsurface formations
- interpret that information

### ENJOY:

- working with a great deal of autonomy
- acting on an idea and risk carrying it to fruition
- taking pride in a job well done

**MECHANICAL ENGINEERING  
ELECTRICAL ENGINEERING**  
(and other engineering disciplines)

**GEOSCIENCES  
APPLIED SCIENCES**

### INFORMATION MEETING:

Date: March 4, 1991  
Time: 7:00 pm — 9:00 pm  
Place: McNutt Hall, Room 204

### INTERVIEWING:

Date: March 5 — 6, 1991  
Place: Please check with Placement Office

PLEASE NOTE: Open to all interested students. Your attendance at the Information Meeting is a prerequisite to our interviewing process. Please attend. Casual attire.

Exceptional People.  
Exceptional Technology.  
Worldwide.

**Schlumberger**

An Equal Opportunity Employer



## MARRIOTT DINING SERVICE

### Weekly Menu - February 28 - March 6, 1991

#### UCE- LUNCH

THURSDAY 28	FRIDAY 1	MONDAY 4	TUESDAY 5	WEDNESDAY 6
Grilled sausage patty	Grilled pork steak	Country Fried Steak	Chicken Cordon Bleu	Veal & Spaghetti
Prime rib sandwich	Beefstroganoff	Beef & Noodle casserole	BBQ Brisket	Fried Whiting
Chicken Stir Fry	Grilled pollock	Ham and swiss quiche	Carved Ham	Liver & Onion

#### Rayl and TJ Cafeteria

Thursday (28)	Friday (1)	Saturday (2)	Sunday (3)	Monday (4)	Tuesday (5)	Wednesday (6)
<b>LUNCH:</b>						
Pita sandwich	BLT's	Hot dogs	Swiss Steaks	Rib Sandwich	Hamburgers	Fishwich
Beef fried rice	Spanish Macaroni	Beef pot pie	Chicken & dumplings	Macaroni & cheese	Turkey & noodle	Ham & scalloped
Macaroni & cheese	Shrimp Veg. Oriental	Scrambled eggs w/bacon	French toast w/sausage links	Pancakes	Broccoli & cheddar quiche	Potatoes Taco Salads
<b>DINNER:</b>						
Salisbury Steaks	Pork fritters	Grilled pork steaks		Veal cordon bleu	Grilled ham steaks	Salisbury steaks
Chicken stir fry	Beef tips & noodles	Quarter pound burgers		Lasagna	Chicken stir fry	Spaghetti
Cheese enchiladas	Western omelets	Beef & bean tostadas		Foot-long chili dogs	Beef chimichanga	Pork fried rice



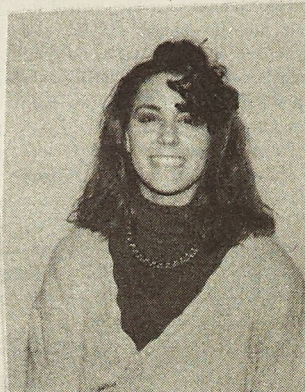
# St. Pat's Queen



We of the Missouri Miner are proud to present Miss Kelly D. Bernal as our candidate for 1991 St. Patrick's Queen. Miss Bernal is the daughter of Robert and Daisy Wilkerson of Mineral Point, MO. She is a senior in Psychology and has been on the honor roll for the last three semesters.

Kelly enjoys meeting people and her hobbies include reading and dancing. She is currently active in the Veteran's Club where she serves as vice president; she is a member of Koinonia, the International Students Club, and Psi Club. We feel that with her outgoing personality she will make an excellent Queen of Love and Beauty.

The men of Tau Kappa Epsilon are proud to present Miss Jennifer Ryczek as our St. Pat's Queen Candidate. Jennifer is the daughter of Gerald and Susan Ryczek of Algonquin, Illinois. She has served the Daughters of Diana as former treasurer and is currently vice-president. She is a fullback on the Varsity Soccer team and also enjoys playing intramurals very much. Her good-humored and outgoing personality make her an outstanding candidate for St. Pat's Queen. All of us at Tau Kappa Epsilon wish her the best of luck.



Gabrielle Melissa Ince was nominated unanimously by the men of Sigma Phi Epsilon to serve as their candidate for the 1991 St. Pat's Queen of Love and Beauty. Ms. Ince is an environmental engineering major who transferred to Rolla last semester as a sophomore from Jefferson College. Currently she has completed 61 hours and has a 2.93 cumulative GPA. Melissa has served on UMR student council, is a member of ASCE, SWE, and is president of Friends of the Heart of Sigma Phi Epsilon. Her scholarships include the Albert Happy scholarship for environmental engineers, Bright Flight, UMR's Curators scholarship and the Women in Engineering scholarship. Melissa is extremely happy to accept this nomination and would make an ideal St. Pat's queen.

The brothers of the Missouri Mines Chapter of Triangle Fraternity are pleased to announce as their candidate for the 1991 St. Pat's Queen of Love and Beauty, Miss Natalie McCune. She is the daughter of Jim and Sharon McCune of O'Fallon, Missouri. Natalie is a junior majoring in Metallurgical Engineering, and is an active member of Chi Omega Sorority, the Society of Women Engineers, Alpha Phi Omega, Lambda Sigma Pi, Phi Eta Sigma, and a pledge of Tau Beta Pi. We would like to wish Natalie the best of luck throughout the St. Pat's activities.



Laura Ledgerwood, daughter of John and Amy Ledgerwood of Harrisonville, MO, is freshman representing Student Council where she is chairman of the Internal Moral committee. She is active in the Baptist Student Union and the fine arts committee of the Student Union Board. She is a Chancellor's Scholarship recipient and participates in the Chancellor's Leadership class. During her spare time Laura can be found bicycling, trout fishing, out dancing, or perusing art galleries. Her favorite pastimes are relaxing with friends and family, and curling up with a good book and Smoke, her cat.



Lori Wood, daughter of Mr. and Mrs. Roger Wood, has been nominated as the St. Pat's Queen Candidate to represent the Student Union Board. She is a sophomore studying Life Science and Chemistry. Lori is actively involved with the Leisure and Recreation Committee of the Student Union Board. She is also very outgoing in the Residence Halls being President of her floor, a member of the Thomas Jefferson Hall Association, Indoor Social Committee Chairman, and a member of the Inter-Residence Council. Lori is a member of the Alpha Chi Sigma Professional Fraternity. We wish Lori the best of luck.



The men of Pi Kappa Alpha would like to present Lisa Marie Molner as their candidate for the 1991 St. Pat's Queen of Love and Beauty contest. The contest is part of the University of Missouri-Rolla's annual St. Patrick's Day festivities sponsored by the St. Pat's Board. Lisa, daughter of Mr. and Mrs. Art Molner of Kirkwood, is currently a sophomore studying electrical engineering. Lisa is a member of varsity soccer team, the Zeta Tau Alpha sorority, UMR Panhellenic, and is also a member of the UMR chapter of the Institute of Electrical and Electronic Engineers. The men of Pi Kappa Alpha would like to wish Lisa the best of luck and are proud to have her represent them in this year's St. Patrick's Day celebrations.

TJHA's 1991 St. Pat's Queen Candidate, Becky Wilson, graduated from Kirkwood High School last spring, and came to UMR in the fall of 1990. Becky is majoring in civil engineering with an emphasis on environmental. She enjoys running both cross country and track and is the secretary/treasurer for the EPA (Environmental Protection Advocates). In her spare time she likes to go white water rafting and traveling to new and exciting places. Upon graduation she hopes to get her pilot's license. Thomas Jefferson Residence Hall is pleased to present Becky Wilson as our candidate for 1991's Queen of Love and Beauty.



The Missouri School of Mines-University of Missouri-Rolla chapter of Acacia Fraternity is proud to nominate Nadra Susan Helleny as their 1991 St. Pat's Queen candidate. Nadra is from Bridgeton, Missouri, daughter of Asa and Mary Ann Helleny. She is sophomore majoring in Engineering Management. She belongs to the Kappa Delta sorority and is their Alumnae Relations Chairman. Nadra is also in the American Society for Engineering Management and her interests include walking, softball, and aerobics. She says she is excited about being nominated and is looking ahead anxiously to the best ever-St. Pat's 1991.



The men of Kappa Alpha Order are proud to present Ms. Patricia Ruma, daughter of Pat and Teresa Ruma of St. Louis, as their 1991 St. Patrick's Day Queen candidate. Ms. Ruma is currently an active member of Kappa Delta sorority where she has held the offices of assistant scholarship chairman and assistant treasurer. Tricia is active on the UMR campus through her affiliation Lambda Sigma Pi, an all women's service organization of which she is a founding member, and through Panhellenic where she is currently historian-by-laws. She is also a member of the Daughters of Lee, a little sister organization of Kappa Alpha, where she has held the offices treasurer and historian. The brothers of Beta Alpha chapter of Kappa Alpha wish Ms. Ruma the best of luck and a happy and safe St. Patrick's Day to all.



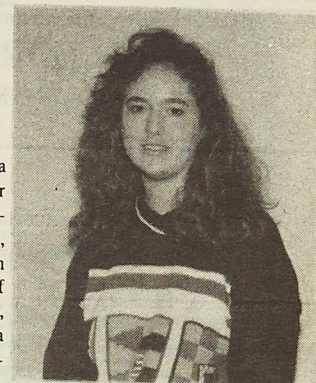
# Candidates



Sigma Tau Gamma is proud to announce Miss Amy Diane Horst as our 1991 St. Pat's Queen Candidate. Amy is the daughter of Weston and Deanna Horst of Springfield, MO. She is currently finishing work on her master's degree in civil engineering structures. Amy enjoys spending her free time playing softball and volleyball, she is also very active in server honors and professional organizations. Sigma Tau Gamma would like to wish Amy the best of luck in the competition for the Queen of Love and Beauty, and hope everyone has a great time at the Best Ever, St. Pat's 1991.



The gentlemen of Theta Tau Omega extend our sincerest congratulations to Elaine Yonker for attaining the coveted honor of being our St. Pat's Queen candidate. Elaine is the daughter of Mr. and Mrs. Richard Yonker of beautiful Bowling Green, MO. She is a member of Chi Omega and has been active in the Panhellenic Council (president), the Gold Miners Pom-Pom Squad (co-captain), Lambda Sigma Pi, and Phi Eta Sigma. The gentlemen of Theta Tau Omega wish Elaine a plethora of luck during this year's St. Pat's.



The men of Lambda Chi Alpha proudly present Connie Cagle as their 1991 St. Pat's Queen Candidate. Connie is a junior from Bella Vista, AK, majoring in history. She is involved in many activities on campus some of which include: History Club, ASUM, and intramural sports. Her work as a research assistant for the History/Political Science department also occupies her spare time. We feel that Connie is the ideal choice because of her cheerful personality and outgoing character. She is very thrilled to representing Lambda Chi Alpha for 1991 St. Pat's Queen and we wish her well.

Beta Sigma Psi is delighted to present Miss Kerri Kraft as our choice for the Queen of Love and Beauty. Kerri, a sophomore in Mechanical Engineering, is the daughter of Thomas and Kathleen Kraft of Lee's Summit, MO. She is active in Chi Omega sorority and represents them on Panhellenic Council where she serves as Greek Week Mini-Olympics chair person. Kerri is also a member of the UMR Volleyball club. Her outgoing personality and good looks make Kerri the obvious choice for the 1991 Queen.

The ladies of Zeta Tau Alpha proudly present Miss Jackye Lyn White as their 1991 St. Pat's Queen candidate. Jackye, daughter of Gary and Sue White of Lee's Summit, MO is a senior majoring in ceramic engineering. She has been active in ZTA holding various chairmanships and is currently holding the office of second vice-president. Jackye's campus activities include: American Ceramic Society Chapter, Keramos National Ceramic Engineering Honor Society, Society of Women Engineers, and UMR's Cooperative Training Program. We feel Jackye is an excellent choice for the Queen of Love and Beauty, shown by her outgoing personality and involvement on campus.



The brothers of Sigma Nu are honored to be represented by Amy Gefferth of Zeta Tau Alpha as contestant for the 1991 St. Pat's Queen. Amy, a junior in civil engineering has exhibited leadership qualities campus-wide. She is member of both the American Society of Civil Engineers and the Society of Women Engineers. She is also vice-president of the Sigma Nu Little Sisters of the White Star and representative for the Panhellenic Council. These leadership qualities coupled with Amy's outgoing character, enthusiasm, and great personality lead us to believe that she is the best candidate for this year's queen. All of us at Sigma Nu would like to wish Amy and all of this year's contestants the best of luck.



Chi Omega proudly presents Michelle Lynn Carpet, daughter of James and Carol Carpet of High Hill, MO as our 1991 St. Pat's Queen candidate. Michelle is a senior majoring in Metallurgical Engineering. She has been involved in Alpha Phi Omega, Society of Women Engineers, Student council and was president and vice president of Daughters of the Emerald. She is also very involved in Chi Omega, especially as spirit chairman and steward. We feel that Michelle's striking good looks, dynamic personality, and friendly smile make her the ideal choice for the honor of presiding Queen at the St. Pat's festivities. Chi Omega wishes Michelle the best of luck.



The men of Phi Kappa Theta fraternity are proud to present the lovely Miss Lisa Tieber as our candidate for the 1991 St. Pat's Queen of Love and Beauty. Lisa is a senior in the Metallurgical Engineering Department and is graduating in May. She was a member of the Lady Miners varsity soccer team and held the position of captain for two years. Her other campus activities include: M Club in which she served as president, and publicity director, ASM International, the American Foundrymen's Society and is a member of Omega Sigma (formerly little sisters of Phi Kappa Theta) in which she holds the position of intramural manager and has played most of the intramural sports for them. She represents us well and we wish her the best of luck.

Kappa Delta is proud to present Mindy Gardner as their 1991 St. Pat's Queen Candidate. Mindy is the daughter of Michael and April Gardner. She is very involved in Kappa Delta Sorority, serving as PEP chairperson and as a Panhellenic representative for the sorority. She has also served on the leisure and recreation committee for Student Union Board, and held the office of secretary for the General Honors Program.



The men of Alpha Epsilon Pi are proud to present Cathy Lynn Wyland as our St. Pat's Queen of Love and Beauty candidate. Miss Wyland, a junior in civil engineering, is the daughter of Mr. and Mrs. Joseph Wyland of St. Louis, MO. Cathy is a member of the Society of Women Engineers and is serving as secretary-treasurer of the Daughters of the Lion. We would like to wish Cathy and all the other contestants the best of luck.





**QUALITY CLEANERS**

\*Expert Cleaning \* Reasonably Priced

108 W. 7th Street Rolla, MO 65401 364-3650

coupon

**HAIR FORCE II**1421 Forum Dr.  
Rolla

New Ownership Specials

Male haircut - \$10

Female haircut - \$14

\$5.00 off Perm or Color

(No rush precision)

Becky Alderson or Beth King

341-5828

Expiration: 3-30-91

SCIENCE FICTION • FANTASY  
COMICS • GAMES

1014 Pine St. Phone 364-4301

**Amnesty International  
Benefit Concert**Appearing:  
**STALE FISH**

BFG'S

XXX

plus others

Date: March 9, 1991

Time: 7:00 pm

Place: Miner Rec

(corner of 10th  
and Bishop)Price: \$4 advance  
\$5 door**ALL YOU CAN EAT**  
\$4.19 Sunday Special after 5 PM

Homestyle Fish

includes fries, slaw, hush puppies

Just show your UMR ID

**Plus Daily 10% Discount**

For UMR Students\*

with a student ID

\* offer not valid with other coupons or discounts

We accept Mastercard,  
Visa, Diners & Discover  
1009 Kingshighway**THE FAR SIDE**

By GARY LARSON



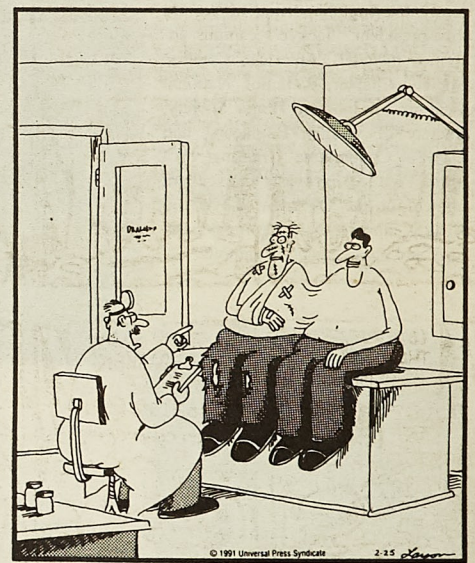
"See how the vegetation has been trampled flat here, Jimmy? That tells me where a deer bedded down for the night. After a while, you'll develop an eye for these things yourself."



Giraffe tough guys



"Make a note of this, Muldoon. . . . The wounds seem to be caused by bird shot . . . big bird shot."



"Wait, wait, wait . . . I'm confused. Bob, you're the one who's claiming your Siamese twin, Frank, changes into a werewolf every full moon?"

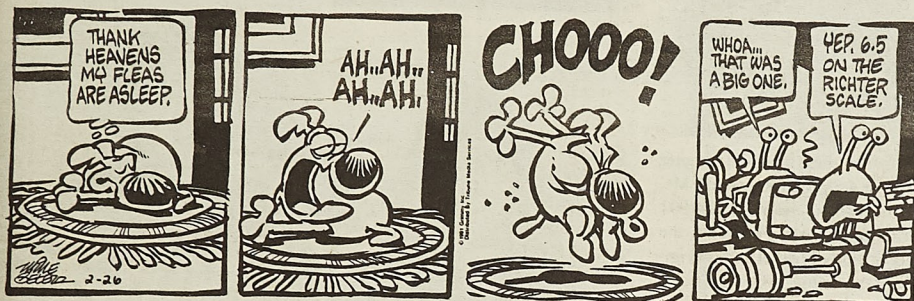


The birth of head-hunting



# Mother Goose & Grimm

by Mike Peters



## A CUT ABOVE

Hair & Tanning Salon

Wolff Tan Beds

209 West 11th St.  
364-6866



## Medi-Value

Pharmacy

Tenth and Pine

Rolla's almost on Campus pharmacy & photo center.

For all your health & photo needs.

Phone 364-7077

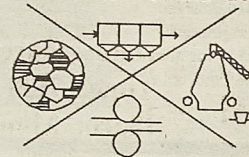
## UNDECIDED ENGINEERING ?

LOOKING FOR A CAREER IN AN  
EXCITING DIVERSE FIELD ?

**METALLURGICAL ENGINEERING**  
HAS EMPHASIS AREAS IN  
EXTRACTIVE, MANUFACTURING AND  
PHYSICAL METALLURGY AND IS  
PREPARING A MATERIALS MINOR

DO YOU WANT EXCELLENT  
SCHOLARSHIP, COOP AND  
PLACEMENT OPPORTUNITIES ?

WHY NOT CONSIDER A CAREER IN  
A FIELD VITAL TO THE ECONOMY ?



**METALLURGICAL ENGINEERING**

VISIT ONE OF THE MET ENG OPEN  
HOUSES AS PART OF YOUR FEP  
REQUIREMENTS.

3.30PM MARCH 12, 20, 28  
244 McNUTT HALL



Your Choice of Medium  
Pepperoni Lovers, Cheese  
Lovers, or Meat Lovers  
for \$8.99 or two for \$12.99

\*Only good with coupon. Expires 3/3/91

Call Ahead For Faster Service

364-7213  
1024 KINGSHIGHWAY  
Rolla



## St. Pat's Queen Candidates



Jennifer Jefferson, age 22, of O'Fallon, MO is RHA's (Residence Hall Association), St. Pat's Queen Candidate. She is a senior at UMR majoring in civil engineering, with an emphasis in transportation. She plans to graduate in December 1992. Jennifer resides in an upperclassman residence hall, Holtman Hall. She transferred from NMSU, where she was a TKE little sister, and she served as secretary of that organization. Her involvement in the residence halls was shown by her acting as the residence hall fundraiser chairman, and she was involved in many other house activities. Jennifer Jefferson is currently a member of the American society of Civil Engineers at UMR. She also enjoys exploring the outdoors, talking to people, and collecting teddy bears.

Kappa Sigma fraternity at the University of Missouri-Rolla is proud to present our candidate for St. Pat's Day 1991 Queen of Love and Beauty, Leslie Frost. Leslie, a 1990 graduate of Francis Howell High School in St. Charles, MO, is a freshman pursuing a chemical engineering degree. She is a member of Zeta Tau Alpha sorority, UMR Panhellenic Council, and the American Institute of Chemical Engineers. Kappa Sig is extremely pleased to have Leslie as our candidate and would like to wish her the best of luck this St. Patrick's Day.



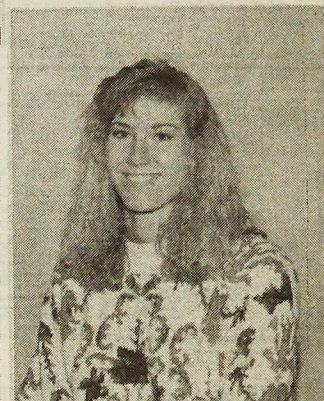
The men of the Alpha Iota Chapter of Sigma Pi are proud to present Ms. Jami Frenkel as our candidate for 1991 St. Pat's Queen. Ms. Frenkel is the daughter of Betty Frenkel and is originally from St. Louis, MO. She is currently enrolled in the UMR Freshman Engineering program. In addition to her academic studies, Jami participates in several extra curricular activities. She is a member of the Zeta Tau Alpha sorority and is very active in the Sigma Pi little sister organization, D.O.E. Jami is very thrilled to be a candidate for the 1991 St. Pat's Queen and we all wish her well.



KMNR would like to present Miss Karen S. Goetz, the daughter of Mr. and Mrs. Norbert L. Goetz of Fenton, MO, as their 1991 St. Pat's Queen candidate. Karen is a freshmen planning to graduate with a degree in Mathematics. Currently, Karen is involved in such campus activities as Chi Omega, KMNR, Alpha Phi Omega, and the Student Union Board. KMNR would like to wish her the best of luck!



Theta Xi presents Miss Anita Jilg as a candidate for the 1991 St. Pat's Queen of Love and Beauty. Anita is a junior in civil engineering, and is the daughter of Mike and Martha Jilg of Rockbridge, IL. Anita is currently active in Chi Omega and ASCE. The members of Theta Xi would like to wish Anita the best of luck.



The Men of Sigma Chi are proud to present Jennifer Schnur as their 1991 St. Pat's Queen of Love and Beauty Candidate. Jennifer, the daughter of James and Maryann Schnur of Washington, MO, is currently a senior in engineering management. She is a member of the American Society for Engineering Management, the M Club, the Little Sigmas, and co-captain of the Lady Miners Basketball team. Good luck, Jen.

All photos by Kevin Biggers

### PERSONAL RESOURCE DEVELOPMENT

Sponsored by Counseling & Career Development  
A Division of Student Affairs  
341-4211 204 Norwood Hall



#### TEST ANXIETY

Wednesday, March 6

3:30-4:30 pm; 201 Norwood Hall

Facilitator: Dr. Gene Van Matre



Learn how you can reduce the anxiety that causes you to forget critical facts and figures when you take tests only to remember them on the way to your room later.

## Bruno's

Banquet Facilities Available  
Men's Night - Wednesday  
Ladies' Night - Thursday  
9:30 - 1:00

341-2110

2001 Forum Drive

# RH

## RESIDENCE HALL

Where the living is  
easy, the learning is  
fun, and the friend-  
ships are forever!

For more information contact the Office of  
Residential Life 104 Norwood Hall 341-4218



# Your Student Activity Fees at work around campus

SAFB  
SOURCE

The Student Activity Fee monies are used by the University Center to maintain facilities, services and promote programs that enhance student development. Facilities are used for student organizational meetings, special events, and leadership programs which will promote training and development of students with academic, cultural, social and recreational programs.

## Student Council provides service

Student Council  
SOURCE

Student Council is one of the busiest organizations on campus. Its purpose is to represent the students and their wishes in dealing with campus issues. Representatives are elected from each floor of the residence halls,

each Greek organization, and also from many other groups on campus.

StuCo has many responsibilities, but possibly the most important is the recommendation of Student Activity Fee levels for the following year. The Council votes on recommendations for each group; then the recommendations are passed on to the administration and the Board of Curators for their approval. StuCo's other responsibilities include working with the administration on campus policies and issues that directly affect students.

In addition, StuCo provides many services to the UMR campus. Some of the services provided by Student Council include supplying the courtesy phones in the library and the University Center, organizing four blood drives each year, providing free legal advice on Tuesday afternoons throughout the Fall and Winter semesters, and publishing the Student Living Guide. Student council also appropriates funds to campus organizations for their projects and oversees the use of the Equipment Fund which helps organizations make one-time equipment purchases.

Being a StuCo representative or working on our various committees can be a very rewarding experience. It is a good feeling to be involved in the operation of our campus and to make a difference in campus life. If you are interested in Student Council, stop by our office at 202 University Center West or call 341-4280.

for printing the book produced by UMRolla students, by a national yearbook publisher. Other funds cover film, paper, chemicals for photographic production; office supplies for editing; telephone, reproduction, type-printing equipment and services needed to produce the book; and modest remuneration of editors and photographers - twenty to thirty students - after successful completion of their assignments. The Rollamo made available to students is a hardcover, nine-by-twelve inch book printed on high quality paper, with some color pages, in a durable, embossed binding.

## Student athletic fee keeps U.M.R. in shape

Athletic Department  
SOURCE

The student athletic fee supports the intramural and intercollegiate programs.

Specifically, this fee is used to pay the institutional support, physical maintenance, and operational costs for Intramural and Intercollegiate Athletics. It is also used for team expenses (such as uniforms, equipment, team travel, game expense, etc.) for men and women's soccer, men and women's cross country, football, men & women's basketball, men's swimming, rifle, baseball, tennis and men and women's track.

The fee also goes to pay the salary of the new Intramural Director.

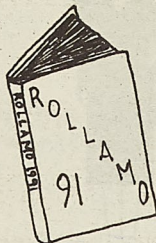
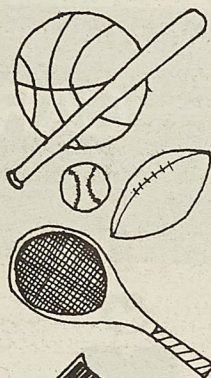
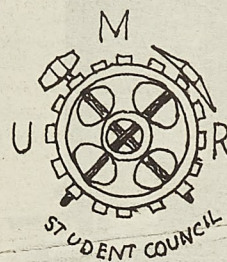
For this fee the students are admitted free of charge to all athletic contests. They have the use of the athletic facilities and may participate in the intramural program.

## Students, hard work, and a small fee bring the Rollamo to life

Rollamo  
SOURCE

The intent, in publishing a yearbook, is to provide a pictorial rendition of the year's events, activities, personalities. The end product is the result of efforts by students, with the exception of senior portrait photography, enrolled on campus who undertake the task as an extra-curricular activity. The expectation is that those who read the yearbook will have a visual identifier, memorabilia of their experiences while enrolled.

Funding for the Rollamo is provided by a line-item Student Activity Fee (\$10.00 in 1991-92), paid by full time students in the Fall semester's fees. The bulk of the money goes to pay



M. LICKLIDER

GENERAL MOTORS  
VOLUNTEER SPIRIT AWARD  
in association with © 1989

## Attention Student Volunteers!

Submit Your Applications  
for the GM Volunteer  
Spirit Award!

Deadline for applications is:

Friday, March 22, 1991

Applications available at:

113 University Center - West  
(314) 341-4993

CHEVROLET · PONTIAC · OLDSMOBILE  
BUICK · CADILLAC · GMC TRUCK



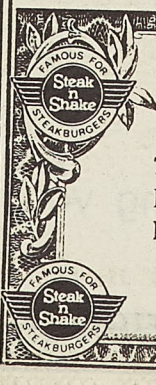
COLLEGE

General Motors...sharing your future™



© 1989

You Never Forget the Great Taste of  
**Steak 'n Shake®**  
**ONE DOLLAR OFF SALE!**  
I-44 & Hwy. 63 Rolla



**Steak 'n Shake®**  
**ONE DOLLAR OFF SALE!**

This coupon good for one dollar off any Sandwich, Fry, Drink Combo - Platter Special - Large salad - or Delicious Dinner Choice.

Not valid when used in conjunction with other special offer.  
Not redeemable for cash. Limit 1 per customer.  
Offer expires: February 28, 1991



ONE DOLLAR OFF



# A look at this semester's UMR Film Series

## UMR Film Series SOURCE

### February 28 The Two Jakes

Jack Nicholson, Harvey Keitel, Meg Tilly. Directed by Jack Nicholson. R-1990. The Two Jakes is the long awaited sequel to Chinatown. Nicholson returns as Jake Gittes, a hard-boiled private detective struggling to make a living in '40's Los Angeles. When Jake goes to work for a crooked real estate tycoon, he becomes embroiled in a murder case that's linked to sordid events from his past. A stylish film noir, The Two Jakes captures the dark and moody look of the great detective thrillers of the '30's and '40's.

### March 7 The Entertainer

Laurence Olivier, Alan Bates, Albert Finney. Directed by Tony Richardson. PG-1960. Laurence Olivier's performance in this adaptation of a John Osborne play earned him an Academy Award nomination for Best Actor. As vaudeville entertainer Archie Rice, Olivier powerfully represents the decay of Great Britain in the 1950's.

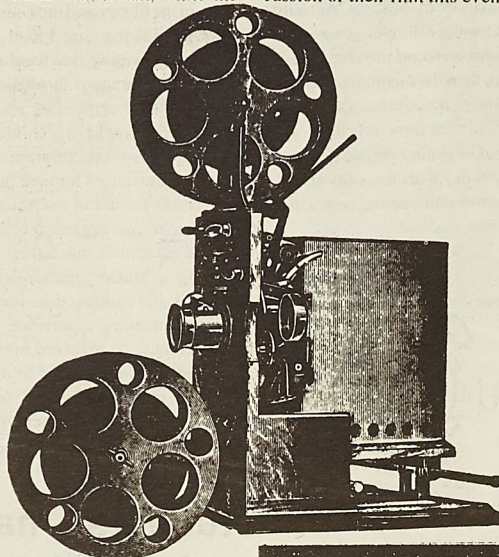
### March 21 Cinema Paradiso

Philippe Noiret, Leopoldo Trieste. Directed by Giuseppe Tornatore. PG-13 1989. Winner of the 1990 Academy Award for Best Foreign Language Film, Giuseppe Tornatore's gentle ode to the cinema is the precious gift of all those who believe in the mystery and wonder of film. Italian with English subtitles.

### March 28 The Seventh Seal

Gunnar Bjornstrand, Max Von Sydow, Bibi Anderson. Directed by Ingmar Bergman. B/W-1957. A knight, returning from the Crusades, plays a game of chess with Death, while the

bluegrass music has been passed from generation to generation. Featured artists: Doug, Rodney, and Pop Dillard; John and Jamie Hartford. Alex Primm will join Tom Shipley in a discussion of their film this evening.



Plague ravages medieval Europe. Bergman's allegorical depictions of man's search for meaning in life placed him at the forefront of world cinema. Swedish with English subtitles. NOTE: Film will be shown in room 104 of the Physics Building.

### April 11 Pop: The Musical Life of Homer Dillard

Directed by Tom Shipley. 1991. Shot at two family reunions, this is the story of the Dillard family and how their

### April 18 Straw Dogs

Dustin Hoffman, Susan George, David Warner. Directed by Sam Peckinpah. R-1972. A quiet mathematician is working on his thesis in a Cornish village. When his wife is raped and the sanctity of his home is violated, he finds catharsis in a violent, bloody confrontation.

### April 25 The Godfather

Marlon Brando, James Caan, Al Pacino, Robert Duvall, Diane Keaton. Directed by Francis Ford Coppola. R-1972. Based on Mario Puzo's best-seller, Francis Ford Coppola's Academy Award winning film saga is the definitive look at crime in America.

### May 2 A New Leaf

Walter Matthau, Elaine May. Directed by Elaine May. G-1971. An outrageous funny comedy with Matthau as a frumpy botany teacher.

May was the first woman to write, direct and star in a Hollywood film.

## Crossword Solutions

S	P	E	E	D	L	A	M	P	S	E	Q	U	I
C	O	N	T	R	I	T	I	O	N	G	U	N	N
I	N	T	R	A	S	T	A	T	E	A	I	D	S
S	T	R	E	W	S	T	E	D	E	E	P		
R	E	S	S	Y	R	S	S	R	I				
R	E	S	C	R	I	P	T	Y	U	C	C	A	S
A	X	T	O	R	A	H	S	A	L	E	C	S	
C	H	I	N	E	R	U	P	T	A	N	T	A	
K	I	L	T	S	E	M	I	R	S	C	O	T	
E	L	L	E	R	Y	B	E	E	N	H	E	R	E
T	A	W	S	I	T	R	K	O					
E	R	A	L	E	R	I	T	O	T	H	E		
E	A	T	A	L	A	P	I	D	A	R	I	E	S
R	T	E	S	D	I	S	C	O	N	C	E	R	T
S	E	R	T	S	T	E	E	L	Y	A	R	D	S

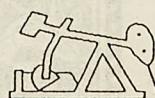
## SPRING CAREER INFORMATION DAY

February 28, 1991  
9:30 A.M. - 3:30 P.M.

Centennial Hall  
University Center-East

A variety of companies and organizations will be on hand to promote summer and co-op jobs and discuss employment opportunities in general.

- Explore and develop employment options
- Talk to employers even if you already have a job
- Learn where your skills and knowledge fit into the current employment scene
- Door prizes will be given



Bring your resume and your questions!

CAREER PLACEMENT & CO-OP OFFICE

# SUBWAY

## WINTER SPECIALS

MONDAY: ANY REGULAR 6" FOR \$2.29

TUESDAY: BUY ONE GET ONE FREE  
AFTER 4 P.M.  
Free Sub Must Be of Equal or Lesser Value

WEDNESDAY: \$1.00 OFF ANY  
FOOTLONG OR LARGE SALAD

THURSDAY: \$5.00 OFF ANY 6 FT. PARTY SUB  
FOR FRI OR SAT. PICK-UP

FRIDAY: FREE SODA  
WITH  
PURCHASE OF ANY SUPER SUB

SATURDAY: LATE NIGHT SPECIAL:  
BUY ONE GET ONE FREE AFTER 9 P.M.  
Free Sub Must Be of Equal or Lesser Value

SUNDAY: CLUB CARD DOUBLE STAMP DAY

Not good in combination with any other offer.  
Limit: One Special Per Customer Per Visit

819 Pine St.

phone 364-3395



# What should you do if you are a victim of domestic violence?

By Kelly Bernal  
STAFF WRITER

In an time where our society is becoming more aware and active in the support of individuals and victims, it is good to see these type of actions take place in our own community. The Phelps County Adult Abuse Board has been instrumental in making available 24 hour hotline for staffed with trained counselors. The hotline is there to provide information, aid, and services to victims of domestic violence in Phelps county.

A safe shelter for Phelps County residents and their children is funded through the Adult Abuse Board. In addition, financial assistance as well as

transportation for the victim can be arranged.

The Phelps County Adult Abuse Board is located in the Phelps County Courthouse, Rolla, MO 65410. For more information, you can contact that office or Dr. Carol Smith, in the Philosophy and Liberal Arts Department, room G-4, H/SS, 341-4869.

Some survival tips for women in crisis are as follows:

\*Know where you can go for help. Keep these numbers where you can find them if you need them.

\*Tell someone you know and trust what is happening to you, so that if you need to get out of your home in a hurry you will have someone you can turn to.

\*If you are injured, go to a hospital emergency room or doctor and tell

them what happened to you.

**\*CALL the police or 911.**

\*Keep with someone you trust: a spare set of keys, a set of clothes, important papers, prescription orders or duplicates, and some money.

\*Keep any evidence of physical abuse (ripped clothes, photos of bruises and injuries, etc.).

\*Call the hotline. Find out about the laws, the shelters and other resources available to you **before** you have to use them.

Some of the signs or symptoms of abuse are, if a spouse, ex-spouse, lover or dating partner has:

\*withheld approval, appreciation or affection as punishment.

\*continually criticized you, called you names, or shouted at you.

\*ignored you feelings.

\*ridiculed or insulted you most valued beliefs, your religion, race, class or sexual preference.

\*been very jealous--harasses you about imagined affairs.

\*manipulated you with lies and contradictions.

\*insisted that you dress the way she/he wants.

\*humiliated you in private or public.

\*insulted or drove away your friends or family.

\*taken cars, keys or money away.

\*locked you out of the house.

\*subjected you to reckless driving.

\*thrown objects at you.

\*abused pets to hurt you.

\*punched, shoved, slapped, bit,

kicked, choked or hit you.

\*raped you.

\*threatened to kidnap the children if you leave.

\*threatened to commit suicide if you leave.

If you are a victim of domestic violence, please remember that it is not your fault; don't be ashamed or afraid; and don't take it --Get out and get help. Men can be victims also.

The telephone number for the Adult Abuse--Battered Women and Safe Shelter 24 hour Hotline is: 1-417-865-1728.

\*Signs of abuse list reprinted from a brochure provided from the Family Center, Springfield, Mo.

## Student Health Services

By Kelly Bernal  
STAFF WRITER

Part of the student fee that is paid each semester goes to pay for the Student Health services that are provided by the University. There is quite a range of services that they give in house--varying from treatment of minor illnesses, colds, giving aspirin, vision tests, pregnancy testing, shots, x-rays, providing crutches, VD testing to practically any medical emergency.

The clinic's hours are seven days a week from 8:00 a.m. to 8:00 p.m. They are open and staffed by registered nurses 24 hours a day for emergencies and in patient care. The doctors are also on call 24 hours a day.

The doctors are at the infirmary twice daily, Monday through Friday, during the fall and winter semesters. Their hours start at 8:00 a.m. and 4:00 p.m. Patients will be accepted for one half hour after the start of sick call. 8:30 p.m. and 4:30 p.m. Patients are seen in order of arrival; thus, first come is first served.

Student Health Services also provides several special clinics such as:

**WART CLINIC:** Warts are removed from anywhere, but the feet, by the doctor using liquid nitrogen, available every other Tuesday at 8:00 a.m.

**GYNECOLOGY CLINIC:** Dr. Huster sees patients by appointment only on Wednesday evenings from 5:00 p.m. to 7:00 p.m.

**PSYCHIATRIST:** Call the Student Health Service for an appointment.

### PLANNED PARENTHOOD OF THE CENTRAL OZARKS

#### Family Planning

free pregnancy testing  
reproductive health exams  
referral services available  
birth control supplies  
evening hours available  
sliding scale fee

All Services Confidential  
MON & WED 8-7

TUES & FRI 8-5 THUR 8-12

364-1509

1032 - B Kingshighway

## CORPORATE SEMINAR "DIVERSITY IN THE WORKFORCE"

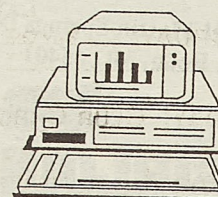
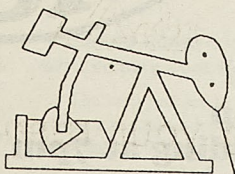
February 27, 1991  
M.E. Auditorium  
6:30 p.m.

How will the changing demographics and the diversification of the workforce affect you?

Find out how companies are preparing a business climate to be competitive in the 1990's and in the next century

Corporate Presentors:

AMOCO PRODUCTION COMPANY  
IBM CORPORATION  
DEERE AND COMPANY  
SOUTHWESTERN BELL



CAREER PLACEMENT & CO-OP OFFICE



**STAGE  
ONE**

the hair school  
"Nationally Accredited"

**Haircuts Only \$3.50**

Phone 364-1383

1304 N. Pine All work done by Student s

**LA POSADA**  
**MEXICAN RESTAURANT**

- \* Delicious Mexican Food  
(Mexico City Style)
- \* Daily Lunch & Dinner Specials
- \* 1024 types of Nachos
- \* Reasonable prices

**Mr. Speedee  
Copy Center**  
Fast, Professional  
Service

Only  
**5¢**  
with student I.D.

Black and white, 8 1/2 x 11,  
copies on 20# bond, for only 5¢  
each. Need we say less?

Quality copies, with fast, expert  
assistance.

Binding, collating and other  
finishing services available.

Brilliant color papers  
available.

**TRIAD**  
BUSINESS PRODUCTS

314-364-2485 • 1-800-888-2485  
Fax 314-341-8372  
630 South Bishop Rolla, MO 65401  
Retail Store Hours: Mon.-Fri. 8:00-5:30;  
Sat. 9:00-4:00  
Printing & Commercial: Mon.-Fri. 8:00-4:30

**Sunday  
Night  
Special**

Stockade Burger,  
Fries & Drink

**\$2.99**

Every Sunday from  
5:00 p.m. to close.  
Includes FREE dessert.

1401 Martin Springs Dr.  
Rolla, MO 65401



**SIRLOIN  
STOCKADE**

© 1990 Sirloin Stockade International

**The Student Union Board and The St. Pat's Board present**



**SATURDAY,  
MARCH 16,  
1991**

**In the Gale Bullman  
Multi-Purpose Building at 7pm**

Advance tickets available in front of the UMR Bookstore,  
University Center West on February 18 - March 15

**\$5\* - Student**  
with valid UMR ID (one per ID)

**\$10\* - All other tickets**

Tickets on sale at the Door  
March 16, 1991 at 5pm for \$10\*

Tickets also available at: Woolf Music, Forum Video, Key  
Sport, Cornerstone Music - Jefferson City

For more information call 314-341-4220

\*Ticket price includes taxes

**SLB**

**Tickets going fast!!**



# Sports

## Miners head into final week seeking a MIAA tournament birth

**Late run lifts SEMO past Miners, 87 - 65 ...**

**... Lose a cliffhanger to Northwest, 84 - 80**

Jeff Lacavich  
Staff Writer

Last Wednesday night the men's basketball team hosted Southeast Missouri State University. The Miners were looking to even up the series with SEMO before going into the MIAA tournament, but that wasn't to be.

UMR won the tip and broke out with the lead, as Chris Dawson hit a 3-pointer. The first half was played very well by the Miners. They led the entire half except for the last 47 seconds.

The Miners had a couple of seven point leads at 15:17 and one at 13:44, but they could not put Southeast away.

SEMO came back to cut the lead to one at 9:41 of the first half. The Miners lost some offensive punch as Dawson had to sit out this last 3-4 minutes when he picked up his 3rd foul.

Danny Gold and Billy Jolly carried much of the weight in the final minutes of the first half. Gold controlled the momentum of the half, as Jolly put the points on the board. Their efforts would not be enough as SEMO took a one point lead into the locker room, 31-30.



**Billy Jolly goes up strong to score a basket against SEMO on Wednesday. Jolly scored 31 points in the Miners loss to Northwest on Saturday. Miners have final home game 2/28.**

The first 10 minutes of the second half was a back and forth battle. Five ties were rung up. At this point in the game, it was up for grabs.

With 9:16 left in the game, the Miners began to fall apart. SEMO played us like puppets. SEMO went on a 31-9 run and broke the back of the Miners.

Dawson fouled out and the Miners

fell apart to lose to SEMO by 22. The final score was SEMO 87, UMR 65. The Miners shot 39.3% from the field, while SEMO shot 55% from the field.

After the Miners' loss to SEMO, they traveled to Maryville, MO to take on Northwest on Saturday. The Bearcats and Miners played a very good game, but the good guys came out on the short end once again.

The first half was controlled by Northwest as the Miners trailed all of the half. Northwest jumped out to a 7-0 lead in the first 2 minutes of the game. The Miners travelled by eight for the rest of the half.

If it wasn't for the first two minutes the game would have been tied. But that was not the case, as the Bearcats had 41 to the Miners' 36 when the

halftime horn went off.

The second half was a catch up half for the Miners. They cut the lead to 3 at 19:46 with a Bill Jolly jumper. The Bearcats jumped out to an 11 point lead at 16:20 of the second half.

The Miners didn't quit. They kept fighting. UMR cut the lead to 3 with 9:46 left to play and it looked like the Miners would pull this one out. Northwest didn't let it happen as they increased their lead to 8 with 4:18 left in the game.

The Miners had one last run in them and came within one of tying the game with 2:29 to play and at 1:31 left to play the luck just wasn't with the team so they lost 84-80.

Jolly had 31 points to lead all scoring and Dawson along with Chris Schneider added 18 of their own. The Miners shot 56% from the field and 78.3% from the line.

The Miners picked up another win from a forfeited game against Arkansas Little Rock, as they used ineligible players. The Miners record stands at 15-10.

The Miners next games are: a home game February 28 against Lincoln and March 2 at Northeast. Both tip offs are set for 7:30 p.m. The Feb. 27 game will be the Miners last home game, so go to the game so we can have a bigger crowd than the visitors.

Play hard and keep up the good work.

**GOOD LUCK MINERS!!!!**

## Lady Miners gain momentum heading into tournament

Tom Brown  
Assistant Sports Editor

**Ladies hang tough against nationally ranked SEMO...**

The slump of the Lady Miners came skidding to a halt this past week, even though they split their two games. They lost a hard fought game to Southeast Missouri State at home on Wednesday and defeated Northwest Missouri State on the road.

The victory against Northwest put them in a three-way tie for fourth place in the MIAA. This was a must win for the Lady Miners as the top four team receive the home court advantage in the conference tournament. UMR received the nod in the tie-breaker pitting them against Northeast Missouri State in the opening round here on Tuesday.

Setting atop the conference is Central Missouri State and in second place is SEMO, which has not lost a game since all of their starters have returned from suspension. Washburn won the third spot, while UMR rounds out the top four seeds.

In the game Wednesday against SEMO, the Lady Miners pulled close but could never take the lead. It was a game that showed the best and the worst UMR squad, as they suffered their sixth loss in a row.

Although 64-52 loss for the Lady Miners, the game was actually a lot closer. The two teams were even in almost category except for shots taken and turnovers which go hand in hand. The Lady Miners committed 23 turnovers on the night which you cannot do and beat a team the caliber of SEMO.

The two teams traded baskets for much of the first half before a surge by SEMO gave them a 27-19 lead at the half. The Lady Miners were ready at the start of the second half. They went on a 7-0 run, led by center Casey Engstrom, to cut the deficit to 1. Engstrom, a 6'3" senior, was fouled going to the basket and turned the three point play.

This would be as close as the Lady Miners could get as SEMO began a run to increase its lead to 10 with 8:27 showing on the clock. The game would already be over if this was the same Lady Miner squad of the previous weeks, but it was not. The girls were

tired of losing and stormed back against the nationally ranked SEMO Othkians.

This time junior guard Trish Van Diggelen was leading the charge. She scored on a driving lay up and then hit Engstrom in the paint who hit the shot. A three point bomb by Van Diggelen forced the SEMO bench to call a time-out with 6:39 left in the game, SEMO 48, UMR 45.

The two teams would exchange baskets before the Lady Miners would be forced to foul, ending the game down 12. Although a disappointing loss, it was a boost for the Lady Miners as they head towards the end of the season.

**... Secure home court edge with victory over Northwest**

The long journey to Maryville on Friday gave the team plenty of time to think about what they would have to do the following night. A win would give them the home court in the opening round a loss would force them to make this very trip on Tuesday.

**See Ladies, page 22**

## KEY SPORT FAN IN THE STANDS



**This week's Fan in the Stands attended the Miner's basketball game Wednesday vs. SEMO. If this is you, come claim your prize at the Miner office, 103 Norwood, on Thursday at 4:30.**



**Ladies** from page 21

The game against Northwest on Saturday was the best game the Lady Miners had played in a while. They took control early and fought off Northwest runs to hold on for a much needed 79-72 victory.

The first 10 minutes of the first half was very close with the widest margin being four points. A seven to two run by the Lady Miners capped off by a Van Diggelen trey, force a Northwest timeout with just over 6 minutes remaining in the half. The break would not halt the UMR momentum as Engstrom was the force inside, connected on two consecutive baskets putting UMR on top 30-21.

The lead of the Lady Miners would extend to 10 at halftime, 42-32. Engstrom was 5 for 5 from the field in the first half and Van Diggelen was 3 for 6, hitting both of her three point attempts.

The second half was again in UMR's favor. Every time a Northwest run would begin, the Lady Miners would answer with one of their own. Suddenly, a run by the Bearkittens caught momentum and they went on a 12-2 run. This brought them within one point with 6:21 left to play.

This would be it for Northwest. This last surge was all they could muster as UMR kept the lead until the buzzer sounded.

Casey Engstrom powered the rejuvenated Lady Miner offense with 20 points and 8 rebounds. She was followed in scoring by Van Diggelen with 17, including 3 of 5 from three point

**Rugby team prepares for Langenberg**

Tom Hughes  
Sports Editor

The UMR Rugby team continued to prepare for the Langenberg Tournament this past weekend. They competed in matches against the St. Louis Bombers and Fort Leonard Wood.

The team played very well in both matches. They came out with a victory against Fort Leonard Wood. Despite

losing to the Bombers, UMR played a fine match.

UMR has high expectations this weekend in the Langenberg tournament. They will be trying to improve on last year's second place finish.

The tournament will be played at Forest Park in St. Louis. UMR's first match is against Principia College Saturday morning at 9:00 a.m. Good Luck to the rugby team!!



Courtesy UMR Rugby Club

**UMR Rugby team battled Fort Leonard Wood Saturday in preparation for the Langenberg tournament this weekend.**

range, and Stacy Mathes with 10 points.

The Lady Miners ended the regular season with a somewhat disappointing 16-10 record overall and 9-7 in the

MIAA. All in all it was a successful season for the Lady Miners, one that hopefully is far from over with the upcoming post season tournaments.



Evenings 5:15 & 7:30  
Matinee Sat & Sun 2:00

**RITZ**  
803 ROLLA ST. 364-1299

**Lt. John Dunbar is  
about to discover  
the frontier...**



KEVIN COSTNER  
**DANCES  
WITH  
WOLVES**

Evenings 4:30 & 8 pm  
Matinee Sat & Sun 1:15 pm

**UPTOWN**  
1100 PINE ST. 364-1857

**ALL SHOWS BEFORE 6 PM-ADULTS \$3.00 / LIMITED TO SEATING  
SENIOR CITIZENS - \$2.75 ALL DAY**

**SOUNDPORT  
CARAUDIO**

**Your car electronics alternative!**

115 N. Bishop  
Rolla, MO  
364-0785

**MINER MANIA**

364-7110

704 Bishop Ave.



**IT'S TIME FOR DOMINO'S PIZZA.®**

**\$5.99** plus tax

**Get an 11" single topping  
pizza for only \$5.99 plus tax.**



Expires  
**3/10/91**

Valid at participating locations only. Not good with any other offer. Prices may vary. Customer pays sales tax and bottle deposit (where applicable). Our drivers carry less than \$20.00. Delivery areas limited to ensure safe driving. Our drivers are not penalized for late deliveries. © 1990 Domino's Pizza, Inc.

**LENTEN SPECIAL**

**2 Medium Cheese Pizzas  
Delivered in 30 Minutes or Less**

**\$7.99! +Tax**

**Extra Topping Only \$1.60 (Covers Both Pizzas)**

**MUST USE COUPON WHEN ORDERING**

**EXPIRES 3-29-91**

**NOT VALID WITH ANY  
OTHER COUPON OR OFFER**



Valid at participating locations only. Not good with any other offer. Prices may vary. Customer pays sales tax and bottle deposit (where applicable). Our drivers carry less than \$20.00. Delivery areas limited to ensure safe driving. Our drivers are not penalized for late deliveries. © 1990 Domino's Pizza, Inc.

**Sunday Spectacular**

**Get one 11" Pepperoni Pizza  
for only \$4.99 plus tax.**

**Good Sundays only  
from 11am-12pm**



Expires  
**3/10/91**

Valid at participating locations only. Not good with any other offer. Prices may vary. Customer pays sales tax and bottle deposit (where applicable). Our drivers carry less than \$20.00. Delivery areas limited to ensure safe driving. Our drivers are not penalized for late deliveries. © 1990 Domino's Pizza, Inc.

**Late Night Special**

**\$7.99**

**Get a large single topping pizza for  
only \$7.99 plus tax after 9 pm everyday.**



Expires  
**3/10/91**

Valid at participating locations only. Not good with any other offer. Prices may vary. Customer pays sales tax and bottle deposit (where applicable). Our drivers carry less than \$20.00. Delivery areas limited to ensure safe driving. Our drivers are not penalized for late deliveries. © 1990 Domino's Pizza, Inc.



# Placement

## UNIVERSITY OF MISSOURI-ROLLA PLACEMENT OFFICE

Buehler Building, 9th & Rolla St.  
Rolla, MO 65401

### PERMANENT EMPLOYMENT

**WEEKLY DETAIL LIST #7**  
Updates for Weeks of March 4, 11, 18 & 25, 1991  
(LISTINGS ARE IN DATE ORDER)

**INDUSTRIAL RISK INSURERS**  
200 N. Broadway, Suite 1717  
St. Louis, MO 63102  
attn: Mr. David Hettenhausen

NUMBER OF SCHEDULES: 1  
MAJORS: BS/ME or EE  
POSITION: Loss Prevention Associate  
Develop the ability to effectively implement loss prevention procedures and prepare quality report information which allows for knowledgeable risk underwriting.  
LOCATION: St. Louis, MO  
INTERVIEWING: May 1991 grads  
CITIZENSHIP: U.S. Citizenship required

INTERVIEW SIGNUP DATE: Friday, Feb. 22, 1991  
INTERVIEW DATE: March 8, 1991

**U.S. AIR FORCE - CPMC & RANDOLPH**  
AFCPMC/DPCMR  
Randolph AFB, TX 78150-6421  
attn: Ms. Vivian Breece

NUMBER OF SCHEDULES: 1  
MAJORS: BS/EE  
POSITION: The purpose of this position is to provide experience and training under a formalized program. This is an engineering trainee position under the PALACE ACQUIRE Intern program and is targeted for the GS-12 level. (Additional details will be posted at the time of signups.)  
LOCATION: Nationwide  
INTERVIEWING: May 1991 grads  
MINIMUM G.P.A.: 3.1  
CITIZENSHIP: U.S. Citizenship Required.

DEADLINE FOR TURNING IN RESUMES: Thursday, Feb. 21, 1991  
INTERVIEW DATE: March 8, 1991

**BOOKER ASSOCIATES**  
1139 Olive Street  
St. Louis, MO 63123  
attn: Mr. John Chew

NUMBER OF SCHEDULES: 1  
MAJORS: BS/MS CE, EE; BS/ME  
POSITION: Entry level design engineers  
LOCATION: St. Louis, MO  
INTERVIEWING: May, July 1991 grads  
MINIMUM G.P.A.: 2.5+  
CITIZENSHIP: U.S. Citizenship required

INTERVIEW SIGNUP DATE: Wednesday, Feb. 27, 1991  
INTERVIEW DATE: March 11, 1991

**OWENS-ILLINOIS**  
2122 Hereford St.  
St. Louis, MO 63110  
attn: Mr. Richard Martin

NUMBER OF SCHEDULES: 1  
MAJORS: BS/ME, EE  
POSITION: Trouble shooting, part design and supervision in a plastics mfg. atmosphere.  
LOCATION: St. Louis  
INTERVIEWING: May 1991 grads

DEADLINE FOR TURNING IN RESUMES: Thursday, Feb. 21, 1991  
INTERVIEW DATE: March 12, 1991

**SQUARE D**  
P.O. Box 3069  
Cedar Rapids, Iowa 52406-3069  
attn: Ms. Patty Bright

NUMBER OF SCHEDULES: 1  
MAJORS: BS/EE, ME  
POSITION: Applications or Marketing Engineering  
LOCATION: Cedar Rapids  
INTERVIEWING: May, July 1991 grads  
CITIZENSHIP: U.S. Citizenship or Work Authorization required

INTERVIEW SIGNUP DATE: Wednesday, Feb. 27, 1991  
INTERVIEW DATE: March 12, 1991

## BATTELLE PACIFIC N.W. LABORATORIES

P.O. Box 999  
Richland, WA 99352  
attn: Mr. Truong Vo

NUMBER OF SCHEDULES: 1  
MAJORS: BS/MS/PhD in NE, ME, MetE, AE, Eng. Mech, ChE  
POSITION: Engineer/Scientist entry level; Engineer/Scientist  
LOCATION: Richland, WA; Washington, D.C.  
INTERVIEWING: recent grads, Dec. 1990, May, July 1991 grads  
MINIMUM G.P.A.: 3.0  
CITIZENSHIP: U.S. Citizenship required

INTERVIEW SIGNUP DATE: Tuesday, Feb. 26, 1991  
INTERVIEW DATE: March 12, 1991

**AFG INDUSTRIES**  
17300 Silica Drive  
Victorville, CA 92392  
attn: Mr. Kelly Busch

NUMBER OF SCHEDULES: 1  
MAJORS: BS/MS Cer, Met or ChE  
POSITION: Production Supervision Trainee  
LOCATION: Victorville, CA  
INTERVIEWING: Dec. 1990, May 1991 grads  
MINIMUM G.P.A.: 2.5  
CITIZENSHIP: U.S. Citizenship or Permanent Visa Required

INTERVIEW SIGNUP DATE: Tuesday, March 5, 1991  
INTERVIEW DATE: March 19, 1991

**MIDWEST RESEARCH INSTITUTE**  
425 Volker Blvd.  
Kansas City, MO 64110  
attn: Ms. Betsy Forbes

NUMBER OF SCHEDULES: 1  
MAJORS: BS/MS Environmental Engineering, Chemical Engineering or Chemistry  
POSITION: Several environmental engineering positions  
LOCATION: Kansas City, MO

DEADLINE FOR TURNING IN RESUMES: Thursday, Feb. 28, 1991  
INTERVIEW DATE: March 21, 1991

**HOUSTON LIGHT & POWER**  
P.O. Box 289  
Wadsworth, TX 77483  
attn: Ms. Vicki Harris

NUMBER OF SCHEDULES: 1  
MAJORS: BS/MS EE, ME, NE  
POSITION(s): Mechanical Engineers, Electrical Engineers, and Nuclear Engineers; Design & Plant Engineering positions available  
LOCATION: South Texas Project Electric Generating Station Bay City, TX (approx. 80 mi. sw of Houston)  
INTERVIEWING: Dec. 1990, May, July 1991 grads  
MINIMUM G.P.A.: 2.8  
CITIZENSHIP: Resident Alien or U.S. Citizen

DEADLINE FOR TURNING IN RESUMES: Thursday, Feb. 28, 1991  
INTERVIEW DATE: March 25, 1991

**ABB COMBUSTION ENGINEERING**  
1000 Prospect Hill Road  
Windsor, CT 06095  
attn: Ms. Joan Brancati

NUMBER OF SCHEDULES: 1  
MAJORS: BS/ChE, NE  
POSITION: Engineer  
LOCATION: Hematite, MO  
INTERVIEWING: May, July 1991 grads  
MINIMUM G.P.A.: 2.75  
CITIZENSHIP: U.S. Citizenship or Permanent Resident Visa

DEADLINE FOR TURNING IN RESUMES: Thursday, Feb. 28, 1991  
INTERVIEW DATE: March 28, 1991

## CYANAMID

(American Cyanamid Company) has two openings in the Mining Chemicals Research Department.  
Position #1 - is for a Metallurgist/Mineral Processing Chemist, which requires experience with mineral separation techniques by floatation. A B.S. level graduate who has combined mineral processing with geology courses would be ideal.  
Position #2 - is for a Chemist, which requires a B.S. in Chemistry, with strong motivation to pursue organic synthesis as a career.

If you are interested in the positions listed above, contact:

AMERICAN CYANAMID COMPANY  
1937 West Main Street, P.O. Box 60  
Stamford, CT 06904

CANCELLATIONS: International Paper -  
Interview date: Feb. 25, 1991



# Co-op Employment

March, 1991

## CO-OP EMPLOYMENT OPPORTUNITIES

**Sign-up location:** 101 Buehler Bldg.  
Co-op Office  
9th & Rolla Sts.

**Sign-up hours:** 7:45 am - 11:00 am  
1:00 pm - 3:00 pm

\*\*\*\*\*

**Interview date:** Monday, Feb. 25, 1991

MONSANTO AGRICULTURAL DIVISION  
St. Louis, Missouri

Interviewing: E.E.

Requirements: 2.0 GPA or above

**Sign-up date:** Monday, Feb. 18, 1991

2 schedules 14 interview openings

1 hour interviews

\*\*\*\*\*

**Interview date:** Friday, March 1, 1991

CHICOPEE  
N. Little Rock, Arkansas

Interviewing: E.E., M.E.

Requirements: 2.7 GPA or above. American  
Citizenship required. Academic level of applicants:  
at least 60 credit hours completed at the end of the  
present semester.

**Sign-up date:** Monday, Feb. 18, 1991

1 schedule - 11 interview openings

\*\*\*\*\*

**Interview date:** Monday, March 4, 1991

BROWN SHOE COMPANY  
Work Locations: Steelville, MO., Union, MO.,  
Piedmont, MO., and Caruthersville,  
MO.

Interviewing: Mgmt., M.E., E.E.'s with ME background

Requirements: 2.0 GPA or above. Academic level of  
applicants: at least 45 hours completed at the end  
of the present semester. US Citizenship required.

**Sign-up date:** Monday, Feb. 18, 1991

1 schedule - 12 interview openings

start work summer 1991

\*\*\*\*\*

AMOCO CORPORATION  
Naperville, Illinois

Interviewing: Ch.E., Chem.

Requirements: none listed

**Turn in resumes:** Monday, Feb. 18, 1991

RESUMES ONLY. IF YOU WOULD LIKE TO BE CONSIDERED FOR  
CO-OP EMPLOYMENT WITH THE ABOVE COMPANY, PLEASE TURN  
IN A COPY OF YOUR CO-OP RESUME TO THE CO-OP OFFICE ON  
THE ABOVE DATE.

\*\*\*\*\*

**Interview date:** Tuesday, March 5, 1991

UNION PACIFIC RAILROAD  
Work locations: Omaha, NE and Little Rock, AR

Interviewing: C.E., E.E., M.E., Mgmt.

Requirements: 3.0 GPA or above. Sophomores or  
above. Must be able to work in US.

**Sign-up date:** Tuesday, Feb. 19, 1991

start work summer 91

Union Pacific RR will have an informational meeting  
on Monday, March 4, 1991 in the University Center-  
East, Room 213 Missouri Room. 7:00 pm - 8:00 pm.  
All students interviewing with Union Pacific RR  
must attend.

\*\*\*\*\*

IBM CORPORATION  
Charlotte, NC

Interviewing: Chem., C.Sc., E.E., M.E.

Requirements: 2.0 GPA or above. Academic level of  
applicants: at least 59 credit hours completed at  
the end of the present semester. US Citizenship,  
Permanent Resident Visa - no student visas

**Turn in resumes:** Wed., Feb. 20, 1991

start work summer 91 or fall 91

RESUMES ONLY. IF YOU WOULD LIKE TO BE CONSIDERED FOR  
CO-OP EMPLOYMENT WITH THE ABOVE COMPANY, PLEASE TURN  
IN A COPY OF YOUR CO-OP RESUME TO THE CO-OP OFFICE ON  
THE ABOVE DATE.

\*\*\*\*\*

**Interview date:** Friday, March 1, 1991

KIMBERLY CLARK  
Conway, Arkansas

Interviewing: M.E., Ch.E.

Requirements: 2.7 GPA or above. Must have  
completed sophomore year at the end of the  
present semester.

**Sign-up date:** Wed., Feb. 20, 1991

start work summer or fall 91

1 schedule - 12 interview openings

\*\*\*\*\*

PHILLIPS PETROLEUM COMPANY  
Work locations: Bartlesville, OK, Houston, Odessa,  
and Borger, TX. Other locations in southern midwest.

Interviewing: Ch.E., C.Sc., Geophysics, M.E., Pet.E.

Requirements: 2.8 GPA or above. US citizenship or  
permanent resident

**Turn-in resumes:** Thurs., Feb. 21, 1991

start work summer 91

RESUMES ONLY. IF YOU WOULD LIKE TO BE CONSIDERED FOR  
CO-OP EMPLOYMENT WITH THE ABOVE COMPANY, PLEASE TURN  
IN A COPY OF YOUR CO-OP RESUME TO THE CO-OP OFFICE ON  
THE ABOVE DATE.

\*\*\*\*\*

**Interview date:** Friday, March 1, 1991

NORANDA ALUMINUM COMPANY  
New Madrid, MO

Interviewing: (3) M.E., (2) E.E., (2) Met.E.,  
(1) Mgmt.

Requirements: 2.7 gpa or above.

**Sign-up date:** Friday, Feb. 22, 1991

1 schedule - 8 interview openings

\*\*\*\*\*



NEBRASKA DEPARTMENT OF ROADS  
Lincoln, Nebraska

Interviewing: C.E.

Requirements: 2.0 GPA or above. Junior Level.

Turn in resumes: Monday, Feb. 25, 1991

RESUMES ONLY. IF YOU WOULD LIKE TO BE CONSIDERED FOR CO-OP EMPLOYMENT WITH THE ABOVE COMPANY, PLEASE TURN IN A COPY OF YOUR CO-OP RESUME TO THE CO-OP OFFICE ON THE ABOVE DATE.

NAVAL WEAPONS CENTER  
China Lake, California

Interviewing: A.E., C.Sc., E.E., M.E., Physics

Requirements: 2.7 GPA or above. Academic level of applicants: at least 29 hrs completed at the end of the present semester. Must be US Citizen.

Turn in resumes: Tuesday, Feb. 26, 1991

pick up government form 171 on Tues., Feb. 26.

start work summer 91

RESUMES ONLY. IF YOU WOULD LIKE TO BE CONSIDERED FOR CO-OP EMPLOYMENT WITH THE ABOVE COMPANY, PLEASE TURN IN A COPY OF YOUR CO-OP RESUME TO THE CO-OP OFFICE ON THE ABOVE DATE.

USDI - BUREAU OF LAND MANAGEMENT  
Boise, Idaho

Interviewing: C.E., C.Sc., Geology

Requirements: 2.0 GPA or above.

Turn in resumes: Tuesday, Feb. 26, 1991

RESUMES ONLY. IF YOU WOULD LIKE TO BE CONSIDERED FOR CO-OP EMPLOYMENT WITH THE ABOVE COMPANY, PLEASE TURN IN A COPY OF YOUR CO-OP RESUME TO THE CO-OP OFFICE ON THE ABOVE DATE.

Interview date: Wed., March 13, 1991

LEONARDS METALS INC.  
St. Charles, MO

Interviewing: M.E.

Requirements: 2.5 GPA or above. US Citizenship. Academic level of applicants: at least 59 credit hours completed at the end of the present semester.

start work summer 91

Sign-up date: Wed., Feb. 27, 1991

1 schedule - 11 interview openings

Interview date: Friday, March 8, 1991

MALLINCKRODT SPECIALTY CHEM. COMPANY  
St. Louis, Missouri

Interviewing: Ch.E.

Requirements: 3.0 GPA or above. Academic level of applicants: at least 59 credit hours completed at the end of the present semester. Citizen of US or Green Card.

Sign-up date: Wed., Feb. 27, 1991

start work summer 91

1 schedule - 13 interview openings

GM DELCO ELECTRONICS  
Kokomo, Indiana

Interviewing: E.E., M.E., Ch.E., Mgmt., C.Sc., Math

Requirements: 3.0 GPA or above.

Turn in resumes: Friday, March 1, 1991

start work summer or fall 91

RESUMES ONLY. IF YOU WOULD LIKE TO BE CONSIDERED FOR CO-OP EMPLOYMENT WITH THE ABOVE COMPANY, PLEASE TURN IN A COPY OF YOUR CO-OP RESUME TO THE CO-OP OFFICE ON THE ABOVE DATE.

PROGRAMMING MANAGEMENT AND SYSTEMS INC.  
St. Louis, Missouri

Interviewing: A.E., C.Sc., E.E.

Requirements: 2.0 GPA or above

Turn in resumes: Tuesday, March 5, 1991

RESUMES ONLY. IF YOU WOULD LIKE TO BE CONSIDERED FOR CO-OP EMPLOYMENT WITH THE ABOVE COMPANY, PLEASE TURN IN A COPY OF YOUR CO-OP RESUME TO THE CO-OP OFFICE ON THE ABOVE DATE.

NAVAL WEAPONS SUPPORT CENTER  
Crane, Indiana

Interviewing: Math., C.Sc., E.E., M.E.

Requirements: 2.0 GPA or above. Must be US Citizen.

Turn in resumes: Tues., March 5, 1991

RESUMES ONLY. IF YOU WOULD LIKE TO BE CONSIDERED FOR CO-OP EMPLOYMENT WITH THE ABOVE COMPANY, PLEASE TURN IN A COPY OF YOUR CO-OP RESUME TO THE CO-OP OFFICE ON THE ABOVE DATE.

E-SYSTEMS INC.  
Greenville, Texas

Interviewing: A.E., C.E., C.Sc., E.E., M.E.

Requirements: 2.5 GPA or above. Academic level of applicants: at least 45 hours completed at the end of the present semester.

start work summer or fall 91

Turn in resumes: Wed., March 6, 1991

RESUMES ONLY. IF YOU WOULD LIKE TO BE CONSIDERED FOR CO-OP EMPLOYMENT WITH THE ABOVE COMPANY, PLEASE TURN IN A COPY OF YOUR CO-OP RESUME TO THE CO-OP OFFICE ON THE ABOVE DATE.

SUNRISE/IAD  
Kansas City, Missouri

Interviewing: E.E., Mgmt., M.E.

Requirements: 3.1 GPA or above. USA Citizenship. Academic level of applicants: at least 50 credit hours completed at the end of the present semester.

Turn in resumes: Wed., March 6, 1991

start work summer or fall 91

RESUMES ONLY. IF YOU WOULD LIKE TO BE CONSIDERED FOR CO-OP EMPLOYMENT WITH THE ABOVE COMPANY, PLEASE TURN IN A COPY OF YOUR CO-OP RESUME TO THE CO-OP OFFICE ON THE ABOVE DATE.



MARTIN MARIETTA ENERGY SYSTEMS  
Oak Ridge, TN

Interviewing: Ch.E., M.E., Mgmt., E.E., C.Sc.

Requirements: prefer 3.0 GPA but will consider outstanding students with a minimum overall 2.5 gpa with extraordinary abilities and experience. US Citizenship. Willingness to work in Oak Ridge, Tennessee.

Turn in resumes: Thurs., March 7, 1991

RESUMES ONLY. IF YOU WOULD LIKE TO BE CONSIDERED FOR CO-OP EMPLOYMENT WITH THE ABOVE COMPANY, PLEASE TURN IN A COPY OF YOUR CO-OP RESUME TO THE CO-OP OFFICE ON THE ABOVE DATE.

\*\*\*\*\*

SOUTHWESTERN BELL  
Work locations: Missouri and Texas

Interviewing: C.Sc.

Requirements: 2.0 GPA or above. Academic level of applicants: at least 59 credit hours completed at the end of the present semester. Must be legally authorized to work in US.

Turn in resumes: Thurs., March 7, 1991

start work summer 91

RESUMES ONLY. IF YOU WOULD LIKE TO BE CONSIDERED FOR CO-OP EMPLOYMENT WITH THE ABOVE COMPANY, PLEASE TURN IN A COPY OF YOUR CO-OP RESUME TO THE CO-OP OFFICE ON THE ABOVE DATE.

\*\*\*\*\*

WRIGHT PATTERSON AFB  
AFB, Ohio

Interviewing: A.E., C.Sc., E.E., M.E.

Requirements: 2.5 GPA or above. Academic level of applicants: at least 30 credit hours completed at the end of the present semester. American Citizenship required.

start work summer or fall 91

Turn in resumes: Thurs., March 7, 1991

RESUMES ONLY. IF YOU WOULD LIKE TO BE CONSIDERED FOR CO-OP EMPLOYMENT WITH THE ABOVE COMPANY, PLEASE TURN IN A COPY OF YOUR CO-OP RESUME TO THE CO-OP OFFICE ON THE ABOVE DATE.

\*\*\*\*\*

TENNESSEE VALLEY AUTHORITY  
Work locations: Tennessee, Alabama and Kentucky

Interviewing: Ch.E., E.E., M.E., Nuc.E.

Requirements: 2.0 GPA or above. Must be US Citizen.

start work summer or fall 91

Turn in resumes: Friday, March 8, 1991

RESUMES ONLY. IF YOU WOULD LIKE TO BE CONSIDERED FOR CO-OP EMPLOYMENT WITH THE ABOVE COMPANY, PLEASE TURN IN A COPY OF YOUR CO-OP RESUME TO THE CO-OP OFFICE ON THE ABOVE DATE.

\*\*\*\*\*

IOWA DEPT. OF TRANSPORTATION  
Ames, Iowa

Interviewing: C.E.

Requirements: 2.0 GPA or above. American Citizenship required.

Turn in resumes: Mon., March 11, 1991

start work summer 91

RESUMES ONLY. IF YOU WOULD LIKE TO BE CONSIDERED FOR CO-OP EMPLOYMENT WITH THE ABOVE COMPANY, PLEASE TURN IN A COPY OF YOUR CO-OP RESUME TO THE CO-OP OFFICE ON THE ABOVE DATE.

\*\*\*\*\*

Interview date: Monday, March 25, 1991

CP CLARE CORPORATION  
St. Louis, Missouri

Interviewing: E.E.

Requirements: 3.0 GPA or above. Academic level of applicants: at least 75 credit hours completed at the end of the present semester.

Sign-up date: Monday, March 11, 1991

start work summer or fall 91

1/2 schedule - 8 interview openings

\*\*\*\*\*

IBM CORPORATION  
Manassas, VA

Interviewing: E.E., C.Sc., Mgmt., M.E., Ch.E.

Requirements: 2.0 GPA or above

Turn in resumes: Monday, March 11, 1991

RESUMES ONLY. IF YOU WOULD LIKE TO BE CONSIDERED FOR CO-OP EMPLOYMENT WITH THE ABOVE COMPANY, PLEASE BRING A COPY OF YOUR CO-OP RESUME TO THE CO-OP OFFICE ON THE ABOVE DATE.

\*\*\*\*\*

Interview date: Tues., March 26, 1991

GREAT LAKES CARBON CORP.  
Ozark, Arkansas

Interviewing: Cer., Ch.E., C.E., E.E., M.E., Met.E., Pet.E.

Requirements: 2.0 GPA or above. Academic level of applicants: at least 60 credit hours completed at the end of the present semester. US Citizenship.

start work summer 91

Sign-up date: Tuesday, March 12, 1991

1 schedule - 12 interview openings

\*\*\*\*\*

ADDITION TO MARCH CO-OP LIST

Interview date: Tuesday, March 19, 1991

LEVER BROTHERS  
St. Louis, Missouri

Interviewing: Ch.E., E.E., M.E.

Requirements: 2.8 GPA or above, Sophomores or above.

Sign-up date: Tues., March 5, 1991

1 schedule - 13 interview openings

start work fall 91

\*\*\*\*\*

Additon to March Co-op List

Interview date: Tuesday, March 12, 1991

GENERAL FOODS  
Terrytown, New York

Interviewing: Eng.Mgmt., Ch.E., M.E. (packaging emphasis)

Requirements: 2.0 GPA or above

Sign-up date: Monday, March 4, 1991

1 schedule - 13 interview openings

\*\*\*\*\*

JACOBS ENGINEERING  
Lakeland, Florida

Interviewing: Ch.E., C.E., E.E., M.E.

Requirements: 2.2 GPA or above. US Citizenship. Academic level of applicants: at least 45 hours completed at the end of the present semester.

Turn in resumes: Tues., March 12, 1991

start work fall 91

RESUME ONLY. IF YOU WOULD LIKE TO BE CONSIDERED FOR CO-OP EMPLOYMENT WITH THE ABOVE COMPANY, PLEASE TURN IN A COPY OF YOUR CO-OP RESUME TO THE CO-OP OFFICE ON THE ABOVE DATE.

\*\*\*\*\*

UNION CARBIDE CHEMICALS AND PLASTICS  
Texas City, Texas

Interviewing: Ch.E., M.E.

Requirements: 3.0 GPA or above. US Citizen/Permanent Resident

start work fall 91

Turn in resumes: Tuesday, March 12, 1991

RESUMES ONLY. IF YOU WOULD LIKE TO BE CONSIDERED FOR CO-OP EMPLOYMENT WITH THE ABOVE COMPANY, PLEASE BRING A COPY OF YOUR CO-OP RESUME TO THE CO-OP OFFICE ON THE ABOVE DATE.

\*\*\*\*\*

NOTE: The ones that indicate RESUME ONLY. This means the company will not be on campus interviewing, but they want resumes to review and should contact you if they are interested in employing you.

Please let the Co-op Office know immediately of any acceptance of an offer.

Please check with the Co-op Office periodically to see if additional companies have schedules interviews. These will be posted in the Co-op Office.

1102 Pine

314-364-8500

LEO CARDETTI'S  
RISTORANTE

Fine Italian Pasta  
Steaks

Seafood

Fine Missouri Wines  
Cocktails



Now Offering  
Soup and Salad  
with Dinner Rolls



## IBM INTERVIEWING FOR CO-OP POSITIONS

**Date:** Wednesday, March 6, 1991  
**Time:** 8:00 a.m. - 4:00 p.m.  
**Place:** Placement Office-Buehler Building  
**Requirements:** BS MS candidates majoring in:  
\* Computer Science  
\* Electrical Engineering

Students interested in Co-Op must be registered with the Co-Op Office.

IBM will consider for employment U. S. citizens or nationals, permanent resident aliens, asylees, refugees, and those authorized to work under the temporary resident provisions of the 1986 Immigration Reform and Control Act.

IBM locations represented: Austin, TX and Lexington, KY

## Additon to March Co-op List

**Interview date:** Tuesday, March 12, 1991  
**GENERAL FOODS**  
Terrytown, New York  
**Interviewing:** Eng.Mgmt., Ch.E., M.E.  
(packaging emphasis)  
**Requirements:** 2.0 GPA or above  
**Sign-up date:** Monday, March 4, 1991  
1 schedule - 13 interview openings  
\*\*\*\*\*

## ADDITION TO MARCH CO-OP LIST

**Interview date:** Tues., March 26, 1991  
**GENERAL ELECTRIC AIRCRAFT**  
Cincinnati, Ohio  
**Interviewing:** M.E., E.E., Mgmt., C.Sc.  
**Requirements:** 3.0 gpa or above. US citizenship or permanent resident visa.  
**Sign-up date:** Tues., March 12, 1991  
1 schedule - 12 interview openings  
\*\*\*\*\*

## Informational Meetings

### CHEVRON

February 25, 1991  
Mark Twain Rm  
7:00 pm

### HALLIBURTON SERVICES

February 26, 1991  
Mark Twain Rm  
7:00 pm

### U. S. DEPT. OF ENERGY - IDAHO FALLS

February 28, 1991  
Maramec Rm.  
7:00 pm

# Summer Employment

Buehler Building, 9th & Rolla St.

## SUMMER EMPLOYMENT

### WEEKLY DETAIL LIST #7

WEEKS OF FEBRUARY 25; MARCH 18 & 25, 1991 (ADDITIONS)

### GRAIN PROCESSING

P.O. Box 349  
Muscatine, IA 52761  
attn: Mr. Jerry Flakne

**NUMBER OF SCHEDULES:** 1  
**MAJORS:** Must have completed junior level in Chemical Engineering  
**POSITION:** Engineering Assistant  
Work with the Plant Engineer to provide technical and engineering assistance to the production departments.  
**LOCATION:** Muscatine, IA  
**MINIMUM G.P.A.:** 2.0

**DEADLINE FOR TURNING IN RESUMES:** Thursday, Feb. 21, 1991  
**INTERVIEW DATE:** March 18, 1991

### WELLS MANUFACTURING COMPANY

7800 N. Austin Avenue  
Skokie, IL 60077  
attn: Mr. Robert Engelhardt

**NUMBER OF SCHEDULES:** 1  
**MAJORS:** 2nd or 3rd year MetEng students  
**POSITION:** Summer Intern  
**LOCATION:** Skokie, IL

**INTERVIEW SIGNUP DATE:** Friday, Feb. 22, 1991  
**INTERVIEW DATE:** March 1, 1991

### ASSOCIATED ELECTRIC

P.O. Box 754  
Springfield, MO 65801  
attn: Mr. Patrick Mills

**NUMBER OF SCHEDULES:** 1  
**MAJORS:** BS/CompSci, EE, Physics, Math  
**POSITION:** Summer Internship  
**LOCATION:** Springfield, MO  
**INTERVIEWING:** Junior or Senior Standing  
**MINIMUM G.P.A.:** Academic standing commensurate with job requirements  
**CITIZENSHIP:** U.S. Citizenship or Valid Work Permit

**INTERVIEW SIGNUP DATE:** Wednesday, Feb. 20, 1991  
**INTERVIEW DATE:** February 25, 1991

### ASSOCIATED ELECTRIC

P.O. Box 754  
Springfield, MO 65801  
attn: Mr. Charles Means

**NUMBER OF SCHEDULES:** 1  
**MAJORS:** ChE, CE, Chemistry, Life Sciences

**POSITION:** Summer employment in the Environmental Sciences/Engineering Department: broad scope of environmental assignments including compliance assessment, evaluation of regulatory requirements, and environmental permitting and planning. Related work will transcend individual academic requirements.

**LOCATION:** Springfield, MO  
**MINIMUM G.P.A.:** Commensurate with technical requirements of the position; minimum 3.3  
**CITIZENSHIP:** U.S. Citizenship or Must possess a valid work permit  
**INTERVIEWING:** JUNIORS & SENIORS ONLY

**INTERVIEW SIGNUP DATE:** Wednesday, Feb. 20, 1991  
**INTERVIEW DATE:** February 25, 1991

**HELP WANTED**  
**CHANCELLOR POSITION**  
**OPEN**  
**MUST HAVE HIGH SCHOOL DIPLOMA**  
**PLEASE NO G.E.D.s**

**QUALIFICATIONS:**  
**MUST BE POLITICIAN AT HEART**  
**FIXED SMILE &**  
**HEARTY HANDSHAKE**

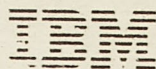
**EUGENE BAE MAY NOT APPLY.**





Fun, food, and freebies. All on IBM®. See how IBM PS/2® Student Solutions work for you. Ask about special student prices.

DATE	TIME	PLACE
March 12, 1991	All Day	UMR Bookstore



For more information contact

Michael Riggs  
110 M-CS  
341-4841