



13 Mar 1959

The Missouri Miner, March 13, 1959

Follow this and additional works at: https://scholarsmine.mst.edu/missouri_miner

These newspapers reflect the attitudes, perspectives, and beliefs of different times. Neither the library nor the university endorses the views expressed in these collections, some of which contain images and language which may be offensive to some readers.

Recommended Citation

"The Missouri Miner, March 13, 1959" (1959). *The Missouri Miner Newspaper*. 1617.
https://scholarsmine.mst.edu/missouri_miner/1617

This Newspaper is brought to you for free and open access by Scholars' Mine. It has been accepted for inclusion in The Missouri Miner Newspaper by an authorized administrator of Scholars' Mine. This work is protected by U. S. Copyright Law. Unauthorized use including reproduction for redistribution requires the permission of the copyright holder. For more information, please contact scholarsmine@mst.edu.

FRIDAY, MARCH 6 1959
 cond Physics Prof.: "Well
 s the way the old spheroid
 ns an appreciable fraction of
 otential energy after a semi
 ic collision."
 MAGAZINES, TOBACCO
 E STORE
 re for Customers

PIZZA
 E No. 4 --
 Highway 68
 ound Bus Depot
 SERVICE

nt

Missouri School of Mines and Metallurgy

The **MISSOURI**  **MINER**

NUMBER 21

VOLUME 45

ROLLA, MO., FRIDAY, MAR. 13, 1959

**St. Patrick Will Knight Eighteen Seniors
 As Highlight of Tonight's Costume Ball
 Blarney Stone Kissing to Follow Knighting Ceremony**

The St. Pat's Board has announced the names of those who are to be knighted by St. Patrick during ceremonies to be held this evening at the Masquerade Ball.

The seniors and their organizations are:

- Acacia—Don Trabue.
- Beta Sigma Psi—Ronald Miller
- Delta Sigma Phi—Dave McCluren
- Kappa Alpha—Dale Taliaferro
- Kappa Sigma—Bob Wright
- Lambda Chi Alpha—Lessel Parks
- Pi Kappa Alpha—Fred Berg
- Sigma Nu—Max Roberts
- Sigma Phi Epsilon—Don Wilson
- Sigma Pi—Walter Steinman
- Sigma Tau Gamma—Al MacHugh

Tau Kappa Epsilon—Hugh Wilson

Theta Kappa Phi—Jerry Bruegging

Theta Xi—Frank Ruppert

Triangle—George Hess

Independents—Bob Hodge, Joe Rikle, Norman Stricker.

It is tradition that on being knighted, the seniors have to kiss the Blarney Stone. Many people are familiar with the Blarney Stone and have heard stories about it. But few know the true story or even know how it got to Rolla. For those who have not heard the true legend and especially for the freshmen, the following account is given.

The Irish people have as a race, for generations been connected with a rare and fabulous stone,

known only as the mysterious "Blarney Stone." It is mysterious in that it exerts an effect upon people with whom it comes in contact, that has hitherto been unexplained. Many explanations as to its power have been forthcoming from intelligent and less fortunate men alike, but no one as yet seemed to come upon the right solution to the problem.

In the year 1907, near Dublin, Ireland, an unusual stone was unearthed, while an excavation was being made for Casey Hall of the Dublin School of Mines. The stone was covered with moss and bore unusual inscriptions, written in the oldest type of writing known — hieroglyphics, which is common on old stones. The construction boss in charge of the work decided that the stone was of some importance and decided to

(Continued on Page 13)

Band Leader Ralph Marterie Will Play Here Both Evenings

Tonight the M. S. M. student body will find Jackling Gymnasium warmed by the strains of Ralph Marterie. Starting at 9:00 and lasting until 1:00 the nation's leading dance band will provide the 1959 St. Pat's celebration

show and his trumpet was featured on many other shows from the capitol of the Midwest.

The honor twice went to Ralph Marterie to lead the featured dance band of the greatest popular music show ever assembled.



with the musical styles that skyrocketed them to popularity. An actual vote by class heads and dance committees which was conducted by Down Beat magazine picked Marterie as the leader of the most popular dance band in America's colleges.

In his youth, his flaming trumpet helped Ralph Marterie become a fixture in Chicago radio studios, from which much of the network music emanated. Ralph regularly took part in such famous radio orchestras as those of Paul Whiteman, Frank Black, Percy Faith, Nathaniel Shilkret, and Roy Shields.

Marterie's career as a band leader was started during his tour of the Navy during World War II. The Navy asked him to organize a band to play at military installations and for civilian bond rallies. Playing to thousands of servicemen throughout the nation started him on his way and when he was discharged his first band became a reality. The American Broadcasting Company offered to set up Ralph with his own network orchestra. He had his own

These shows were the "Star Night" extravaganzas of 1953 and 1954, playing Chicago's mammoth Soldier Field, Detroit's Briggs Stadium and Cleveland's Municipal Stadium.

Co-starring with Marterie on the spectacular productions were Perry Como, Patti Page, Julius La Rosa, Nat "King" Cole and Sarah Vaughn.

Marterie seems to have a flair for coming up with hit records that have international flavor. Not content with just one or two smash hit records, Ralph has turned out one hit after another.

His first was "Pretend" a very beautiful guitar instrumental. He followed this success with a famous old standard "Caravan" which again became popular. This was later followed by a vocal called "Crazy, Man, Crazy," which featured the whole band singing behind Marterie's boy vocalist. The next hit to come from his wide repertoire was "Skokiaan." This was a Zulu drinking song in which Marterie featured an alto saxophone. His recording of "Blue

(Continued on Page 13)

SCHEDULE OF EVENTS

FRIDAY

- 1:00 P. M. Beard Contest, South End of Pine Street
- 1:30 P. M. St. Pat Arrives by Handcar at South End of Pine Street to Lead Parade to 12th and Pine
- 2:30 P. M. St. Pat Delivers His Annual Address and Presents Awards to Winners of Float Contest
- 9:00 P. M. Masquerade Ball at Jackling Gym
- 9:30 P. M. Knighting Ceremonies, Followed by St. Pat's Speech
- 11:30 P. M. Costume Judging

SATURDAY

- 1:00 to 5:00 A. M. Sunrise Dance Following the Costume Ball at the Pi Kappa Alpha House
- 1:30 to 4:30 P. M. Jazz Concert — Emmet Carter — at the Kappa Sigma House
- 1:00 to 5:00 P. M. Dixieland Concert — Jimmy Gardner — at the Kappa Alpha House
- 2:00 to 5:00 P. M. Tea Dance — John Cotter — at the Sigma Nu House
- 9:00 P. M. Semi-Formal Dance at Jackling Gym
- 9:30 P. M. Coronation of the St. Pat's Queen

St. Pat Speaks

Headquarters, Ireland
 March 12th (11:59 p. m.)

As Oi am about to start on me annual jorney for Roler, Miz-zouraf, to pay me visit to the stewed gents av the Mizzouray Skule av Mines, Oi thot Oi would sind on word to me good frinds av the Mizzouray Miner.

Bay Shure that the Wither man presints ye with good wither. Till the colleens to git out all ay the day and make all me b'ys happy on me day.

The siliction ye made av a queen for me honor is most plasing to meeself, but warn her that while the world calls me ould; Oi've still a young heartt in me brist in spite av me gray hairs. Finnaly, be makin shure that aul av me loyil followrs, namely the stewed gents have properly preparin for the visit av thair Patrún, name meself.

See to it that aul av them are will reinforced with gouldly a-mont av good Irish tea, and that ther elbows are will exercised.

In closin, please make shure that me loyil freshmin haue killed or driuen aut aul snakes from the vinity. It seems that we don't be gittin along su well an' Oi donet want to make this a biss eness trup.

Annually yours
 ST. PATRICK



Special St. Pat's Edition



Her Majesty - The Queen



?



WHO

FRIDAY, MA

TH

THE MISSOU



The subscri

features

Editor-in-Chief

Business Mana

Managing Edit

Associate Edit

Sports Editor

Features Edit

Advertising Ma

Circulation Ma

Art and Make

Assistant Edit

Technical Adv

Secretary

Beer

What is beer
 fermenting, who
 liquid we mine
 Beer is compo
 components: w
 and hops.

In times past
 were located ne
 water supplies
 chemical engine
 mineralogical co
 to meet the br
 cations. To wa
 and yeast. The
 from blended
 cause of moder
 constant charac
 Beer is determin
 of carmalizati
 Yeast reacts w
 the malt solu
 changes it into
 beer. Before
 fourth ingredie
 added. Hops,
 is now grown in
 west, are boile
 enhancing the
 of the beer as
 ting certain pro
 filter bed, rais
 providing certai
 fits.

Two Ma

There are tw
 beer: top ferm
 fermented. In
 or top ferme
 that on top
 continental or
 beers are comm
 yeast strain th
 bottom of the
 brewing process
 ed making mar
 of beer as the
 will show.

Bottom B

A. Bottom fe
 beer: (grain ma
 wort):

Pilsner: 3.7
 delicately hopped

OMI

WAT

Authori

G. L. Ch

Jew

805 Pine

THE MISSOURI MINER

THE MISSOURI MINER is the official publication of the students of the Missouri School of Mines and Metallurgy. It is published at Rolla, Mo., every Friday during the school year. Entered as second class matter February 8, 1945, at the Post Office at Rolla, Mo., under the Act of March 3, 1879.



The subscription is \$1.00 per semester. This Missouri Miner features activities of the Students and Faculty of M.S.M.

Senior Board

- Editor-in-Chief James J. Walther
- Business Manager Mike Swoboda
500 W. 8th St.—EM 4-3787
- Managing Editor Ken Baxter
- Associate Editor Robert Powers
- Sports Editor Robert A. Qualls
- Features Editor Jerry Meisner
- Advertising Manager Jerrold M. Alyea
- Circulation Manager Mike Burns
- Art and Make-up Director Dennis Camp
- Assistant Editor Henry Duvall
- Technical Advisor Bill May
- Secretary Ronald E. Sander

Beer, What and How

What is beer, that amber, invigorating, wholesome effervescent liquid we miners know so well? Beer is composed of four major components: water, yeast, malt, and hops.

In times past the best breweries were located near the best natural water supplies. Today, however, chemical engineers can change the mineralogical composition of water to meet the brew-masters specifications. To water is added malt and yeast. The best malt is made from blended barley, which, because of modern technology, is of constant character. The color of beer is determined by the amount of carmalization of the malt. Yeast reacts with the sugars in the malt solution (wort) and changes it into the alcoholic beverage, beer. Before fermentation, the fourth ingredient, hops, must be added. Hops, the best of which is now grown in the Pacific Northwest, are boiled with the wort, enhancing the flavor and aroma of the beer as well as precipitating certain proteins, providing a filter bed, raising stability, and providing certain medicinal benefits.

Two Major Types

There are two major types of beer: top fermented and bottom fermented. In the English types or top fermented beers, the yeast floats on top of the brew. The continental or German Lager beers are commonly brewed with a yeast strain that remains on the bottom of the brew. Different brewing processes can be employed making many different types of beer as the following outline will show.

Bottom Fermented

A. Bottom fermenting or lager beer: (grain may be added to the wort):

1. Pilsner: 3.7-4.7%, pale, driest delicately hopped, first brewed in

2. Czechoslovakia.
2. Dortmunder: 3.7-4.7%, same as Pilsner, but less hoppy flavor.

Common Beer

3. American common beers: inexpensive, local, dark amber beers.
4. Vienna: amber, less bitter.
5. Munich: 3-6.2%, dark brown, full bodied, slightly sweet, not very hoppy.
 - a. Boch
 - b. Salvator
 - c. Wverzbuerger
6. Near Beer: less than 0.5%, cereal beverages.
7. Malt Tonics: nutritional, low in alcohol, fortified in phosphate, iron, vitamins.
8. Steam beer (California): effervescent, tart, ultimate of the brewers art.
9. Malt liquor: 7% or higher, aged longer than is usual for American beers, distinctively flavoured, low carbonation.

Top Fermented

- B. Top fermenting beers or

A. E. Long, M.S.M., Ex '22, Lois S. Long, William S. Jenks, Jr.
LONG INSURANCE AGENCY
 810 Pine St. ROLLA, MO. Phone EM 4-1414
"Service Is Our Business"



Parade Wonderful Alcohol Nix

The following letter was submitted to Curtis L. Wilson, Dean of the Missouri School of Mines by a social relations committee of one of the Rolla Churches:

"For many years the people of Rolla have enjoyed the annual St. Pat's parade sponsored by the MSM students. We appreciate the many hours of labor taken to prepare the beautiful and educational floats in the parade, as well as the time given to the parade itself, which is viewed by hundreds of the townspeople of all ages. Proof of our continuing enjoyment of the parade lies in the fact that the public schools permit children to be excused to view it.

We wish at this time, however, to take issue with the large part played in the parade by the display and consumption of alcoholic beverages. We feel that a display of this sort before the children of our community is not only not in good taste, but is contrary to the type of character education most Christian parents are trying to give their children.

We would like to urge you to use your power and influence to discourage the use of alcoholic beverages in the parade, so that the children, as well as the adults, may gain nothing but good from viewing it."

(English type beers. (sugar may be added for the wort) which are fermented in one vessel only:

1. Ale: 5-6%, pale, bright, pronounced hop taste and aroma, tart, (cream or sparkling ale has higher carbonation).
2. Porter: 6%, dark brown, full bodied, sweeter and less hoppy than ale, malty.
3. Stout: 6-8%, very dark, hoppy, bitter-sweet, malty, rich.

Spontaneous Fermented

C. Spontaneous fermentation (wild yeast):

1. Faro & Lambic beers of Belgium: acidic.
- D. Weiss beer (wheat malt is used): pale, tart, rich foam, made mostly in Berlin.

American Beer

Most American beers are comparatively weak in alcoholic content, and some breweries, especially in the South, use rice as do the Japanese. There are about 300 U. S. breweries, brewing the

American non-satiating, bland, pale. American beer—by using less aging, higher fermentation temperatures, less hops, and more water than their European counterparts.

Serving Beer

A bottle of beer should be served at a temperature be 42 degrees and 45 dgrees F. Beer contains highly assmiabile protien and many vitamins of the B complex. What makes the head on beer? Certain colloids hold the bubbles intact; a good beer has a good head, and a 12 ounce bottle of American beer contains only 170 calories.

Miners Plan 1st St. Pat's Festivities On the Sly

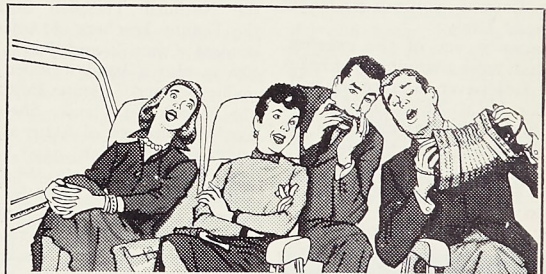
The observance of St. Patrick's Day on the MSM campus has not changed considerably since its beginning 51 years ago. It all started when the MSM student body was invited to send a representative to Columbia to attend the St. Pat's festivities on the MU campus. The Miners collected money and obligingly elected John Bowles to be their representative on a very close ballot.

After finding that more money had been collected than was needed for the representative's trip to Columbia, it was secretly decided to have a similar celebration here in Rolla. A three-man committee of George Easley, Clay Gregory, and D. F. Forrester was selected to make the necessary arrangements and George Menefee was given the honor of being the first "St. Pat."

There was no holiday at that time, and all arrangements were made secretly. It was decided that the highlight of the festivities was to occur at the entrance of Norwood Hall. The entrance was appropriately decorated the night before, after the night watchman had been "taken care of."

The town was plastered with hand bills requesting the students to be at the railroad station at 8 a. m.

The parade from the depot be-
(Continued on Page 5)



HIP, HIP, HURRAY for the GREYHOUND way to save money!

Got the good word about Greyhound Scenicruiser Service®? It's the latest, the greatest way to go... with air-conditioning, picture windows, air-suspension ride and complete restroom! You'll have a ball headin' home on a Greyhound—it's often faster than other public transportation, and always less expensive!



COMPARE THESE LOW, LOW FARES:

Springfield	\$3.70*
St. Louis	3.40
Chicago	9.95
Kansas City	6.60

ONE WAY *plus tax

BAGGAGE PROBLEMS? You can take more with you on a Greyhound. Or, send your belongings by Greyhound Package Express. They arrive in hours and cost you less!

IT'S SUCH A COMFORT TO TAKE THE BUS...AND LEAVE THE DRIVING TO US!



N. Elm and Highway 66

EM 4-2348

LOST!

Beer prices that departed with porch swings & 40¢ a lb. steak

FOUND!

an Honest-To-Goodness BEER VALUE

that brings back the good old days

GOETZ BEER

100 per cent Miner Distributed by STOURTON ENTERPRISES

Ω OMEGA WATCHES

Authorized Agent
G. L. Christopher Jeweler
805 Pine Rolla, Mo.



St. Pat's Court of Love and Beauty

TAU KAPPA EPSILON



Launa Lee Sturgess

Tau Kappa Epsilon's representative at the 1959 St. Pat's Ball is Miss Launa Lee Sturgess, pinmate to TEKE Bob Robertson.

Launa Lee is a freshman at Lindenwood College, St. Charles, Mo., but calls Kansas City her home. Miss Sturgess graduated with honors from Central High School in Kansas City, where she was extremely active in most campus organizations. Upon graduation from high school Launa placed fourth in the Lindenwood placement exams and thereby started a sparkling college career.

Launa Lee, a five-foot-five bundle of happiness, spends her free time skating, dancing, or cooking, which are her three foremost hobbies, and serving on the Freshman Council, student governing body, at Lindy.

Launa is one of the sweetest, kindest, most charming, and beautiful ladies ever to grace the halls of our MSM TEKE House, and for that reason was chosen as our candidate for St. Pat's Queen.

LAMBDA CHI ALPHA



Lynette Stites

In the competition for the Queen of Love and Beauty, Lambda Chi Alpha is proud to present Miss Lynette Stites.

Miss Stites, who is 19 years old, has her permanent residence in Festus, Missouri. She is presently a junior attending Southeast Missouri State College at Cape Girardeau, where she is majoring in elementary education. She was initiated as a member of Tri-Delta Sorority this fall after transferring from Gulf Park College at Gulf Port, Mississippi.

Five foot seven, with dark brown hair and brown eyes, Miss Stites is an excellent swimmer and

water skier. Another of her hobbies is collecting rare and unusual dolls.

Among her other achievements, Miss Stites won the "Queen of the Big Top" which awarded her the honor of riding the National Award winning float representing St. Louis in the Tournament of Roses Parade this year. This was her second victory in a Missouri beauty contest, having won the title of Miss AMVET (American Veterans) of Missouri. She then placed fourth in national competition.

ACACIA



Patricia Lea Roebuck

Patricia Lee Roebuck, nominated by Acacia, is a senior at Caruthersville High School. She is 17 years old, 5' 5 1/2" tall, weighs 122 pounds, and has dark brown hair and eyes. Pat is a member of the National Thespian Society, the Future Teachers of America, Student Council, and Pep Club. She is also a band member and majorette, and Literary Editor of the school year book. She was elected Secretary of State at the 1958 Missouri Girls' State, Missouri representative to the Miss Teenage America Contest in Atlanta, Georgia, last August, and was runner-up for Miss American Legion and Miss Mississippi River. Her hobbies are music, reading, and miniature world wide spoon collection. After graduation, Miss Roebuck plans to attend Central College.

BETA SIGMA PSI



Pam Schweitzer

Eta Chapter of Beta Sigma Psi proudly announces the selection of Miss Pam Schweitzer as their representative to St. Patrick's Court of Love and Beauty.

Pam will be escorted by William Roth, a sophomore in the Chemical Engineering Department, and Wayne Siesennop, St.

Pat's representative.

This charming, brown-haired, blue-eyed, young lady, who was born and raised in St. Louis, is a junior at Bayless High School, where she participates in many school activities. Besides being a member of both the girls basketball and volleyball teams, Pam is on the National Honor Society at Bayless. Some of her many interests outside of school are swimming, dancing, painting, and listening to jazz, particularly that of Ahmad Jamal and Dave Brubeck. After graduation from high school, Pam intends to study art in the hopes of pursuing a career as a commercial artist, a field in which she has shown much talent already.

Even though this is Pam's first St. Pat's, she has graced our house with her presence on several previous dance weekends and we are sure she will be with us in the future. Her charming personality and pleasant disposition have won her many friends at Beta Sigma Psi.

The Beta Sig's are understandably proud to have Pam as their representative and the men of Beta Sigma Psi express their heartiest best wishes to our maid of honor, Pam Schweitzer.

PI KAPPA ALPHA



Kay Bumb

Alpha Kappa chapter of Pi Kappa Alpha is indeed happy to present Miss Kay Bumb as their candidate for Queen of St. Pat's court of Love and Beauty.

Miss Bumb was born and raised in St. Louis. She attended Cleveland High School for two years where she was an "E" student and a member of the Student Council. She graduated from Affton High School in 1956 and proved herself to be quite active at this school too. Some of her more outstanding achievements were her activities on the year-book staff, school paper and girls' chorus. She was chosen for her quality of voice and ability in harmonizing to sing in a girls' quintet. Kay was also chosen for the leading role in the Senior Play and to be in a moving picture produced by the Drama Class, dealing with the activities of a typical high school girl and boy.

This lovely five-foot five-inch blonde is presently employed at the General Motors Acceptance Corporation. Along with her job she is taking a course in General Psychology at Washington University. When Kay can find time, she loves to go swimming or dancing.

Kay will be escorted by Roger Stammer, who is a junior majoring in Electrical Engineering.

THETA XI



Jeannie Bradford

Miss Jeannie Bradford, Theta Xi's candidate for Queen of Love and Beauty is a 5' 4" dark-haired, dark-eyed, 18-year-old freshman at the University of Missouri, where she is majoring in English and Secondary Education.

Valedictorian of Rolla High School in the class of 1958, and active in many school activities, she has followed the same path in college. She ended her first semester with a four-point grade average, in addition to being corridor representative in her dorm, a member of the House of Representatives of the Association of Women Students, a member of the Student Union Coffee Hour, on the Dorm Council, and a member of the Student N. E. A. She holds both a Curator's scholarship and a Junior Classical League scholarship. She is a pledge of Delta Delta Delta sorority.

Descendant of a pioneer Phelps county family, she is the daughter of Mr. and Mrs. Llyn Bradford and a granddaughter of Mr. and Mrs. Walter Bradford, all of Rolla. Her father, an attorney, holds both a bachelor's degree with first honors, and a master's degree, Magna Cum Laude, from the Missouri School of Mines and Metallurgy.

Her favorite activities are playing the piano, at which she is very adept in both classical and modern music, dancing, and sewing.

She is no stranger to Theta Xi, having been a regular attendant at their dances for over a year. This will be her second St. Pat's, and she is looking forward to it with the anticipation of a wonderful time.

Her escort for the weekend's activities will be Andy Lapinski of Theta Xi.

SIGMA PI



Billie Frazier

Sigma Pi's St. Pat's Queen nominee, five foot three, brown-eyed, twenty-year-old, well-proportioned, brunette, Miss Billie Frazier, lives with her parents in St. Louis, Missouri. Graduating from Jennings High School in 1956, she is presently employed as an insurance adjuster for Weisborn and Reynolds Insurance Agency in St. Louis.

Billie's favorite active pastime is bowling, although she enjoys participating in many varied sports and is an interested spectator in many more. For a less active pastime she enjoys reading a good book. She also likes to dance and party. Her charming personality has been observed often on party weekends around Sigma Pi.

She is engaged to Sigma Pi President Gary Woley, and plans to make her home in Rolla beginning next September.

TRIANGLE



Dede Nadler

Triangle's representative at the 1959 St. Pat's Ball is Miss Dede Nadler.

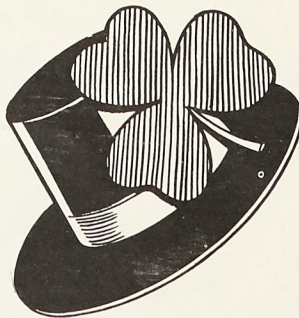
Dede is 19 years old and is from Belleville, Illinois. She is presently employed as a private secretary for the Illinois Power Co., St. Louis, Mo.

Dede is five feet four inches tall, weighs 110 pounds, has blue eyes and blond hair.

Dede graduated from Notre Dame Academy in 1957. While at Notre Dame she was on the Student Council and graduated with scholastic honors. Also while in high school she was Assumption High School's Prom Queen and was Triangle's candidate for Queen at the Military Ball in 1956.

Her hobbies are swimming, bowling and ice skating.

Her dimensions are 35-21-34.



St. Pat's Court of Love and Beauty

DELTA SIGMA PHI



Betty Tucker

Delta Sigma Phi's candidate for St. Pat's Queen is Miss Betty Tucker from Springfield, Mo. Betty is the 18-year-old daughter of Mr. and Mrs. O. H. Tucker, and at present is a senior at Parkview High School.

Betty is indeed a talented and active young lady. Her interests, to name a few, include music, homemaking, science, swimming and boating. Her activity in these fields has made her a professional organist, won her the Betty Crocker Future Homemaker of America award, and has made her moderator of her church youth group.

Next year she hopes to attend Washington University, and since she is second in her senior class, she probably won't have much trouble being admitted.

We at Delta Sig believe that such an attractive and talented young lady would be ideal to reign at St. Pat's Court.

SIGMA NU



Terri Laswell

Sigma Nu proudly presents the beautiful Miss Terri Laswell, from Kansas City, as their candidate for St. Pat's Queen.

She attended East High School in Kansas City, where she was a member of the Kalailu Literary Society, member of school paper and yearbook staff.

Upon graduation from high school in 1955, she enrolled in Kansas City Junior College, where she spent one year studying commercial art and interior decorating. She then enrolled in comptometer school and graduated in September of 1956. She is presently working as a comptometer operator for Carpenter Paper Company.

In February of 1958, she was crowned Sweetheart Queen at the Sigma Nu White Rose Formal here in Rolla.

KAPPA ALPHA



Janet Foss

Miss Janet Foss comes from Carthage, Missouri. Miss Foss is five feet seven inches tall weighs 130 pounds, has brown hair blue eyes and her vital statistics are 24-37-23. Janet is taking nurse's training at Hillcrest Medical Center in Tulsa, Oklahoma. She enjoys tennis and was a high school tennis star. Miss Foss was the winner of "Miss Heartbeat of 1957" contest in Tulsa and an officer in the Oklahoma State Student Nurse Association.

TECH CLUB



Signa Bouchie

The Tech Club candidate for queen of St. Pat's holiday is Miss Signa Bouchie. Miss Bouchie hails from Evansville, Indiana and has that wonderfully southern drawl.

INDEPENDENTS



Helen Zikos

Miss Helen Zikos hails from St. Louis, Missouri. Helen is 19 years of age, five feet three inches tall and weighs 118 pounds. She has brown hair and brown eyes.

INDEPENDENTS



Jane Keeley

Miners Await The Arrival Of St. Pat's

"Here comes St. Pat!" At 2:00 p. m. this afternoon the good St. Patrick will, for the fifty-first time, make his appearance in the town of Rolla.

For weeks the Miners have been preparing for this great and joyous occasion. The freshmen have been carrying shillelachs to drive off all snakes that may be lurking on the MSM campus and in the town. Every organization on campus has elected a candidate for the "Court of Love and Beauty," one of which will be queen, and help St. Pat rule over the festivities. The Miners have grown beards in commemoration of the arrival of the good saint.

Coming from the Emerald Isle far across the green sea, St. Pat annually arrives in Rolla for he knows the MSM celebration is by far the largest all-school celebration of its kind in the country and is unparalleled by any other engineering school.

The custom of honoring the Patron Saint of Engineers in a three-day celebration had its inception at the School of Mines in 1908 and has since grown into a colossal affair. The celebration this year promises to be one of the biggest in history.

St. Pat brings with him four guards and two pages that will assist him in what way is possible. They are dressed in the traditional costumes that were prevalent to those times.

School is dismissed on Wednesday and doesn't take up until the following Monday. All Thursday and Friday the Miners prepare themselves for St. Pat's arrival. The finishing touches are put on the floats and the gym is elegantly decorated. The whole town takes on an atmosphere of green and the Irish come to life.

Far down the tracks some bleary-eyed Miner spots the time-honored flat car and sends up a joyous cheer. Slowly St. Pat approaches the town until he finally reaches Frisco Station where he changes his means of locomotion from the hand-car to a freshman-powered manure spreader. From there he starts the parade and officially opens the St. Patrick's Day celebration.

The Beginning Of St. Pat's

(Continued from Page 3)

gan after the arrival of St. Pat, being led by the MSM band. Every student had been supplied with a green sash and a shillelagh. At the Norwood Hall, St. Pat surveyed a quadrangle with a "crude transit" and requested that all his followers assemble in it. The good Saint then made a speech and interpreted the "hieroglyphics" on the Blarney Stone. The knighting ceremony followed.

After the procession back to town for dinner, a band concert on campus ended the day's activities.

many awards which include: Attendant to Miss Merry Christmas (1956), Miss Monitt Lion, Miss Springfield (1958) and Who's Who (1958).

SIGMA PHI EPSILON



Mary D. Ingino

Sigma Phi Epsilon's candidate to the 1959 Court of St. Pat is Miss Mary D. Ingino, a pert, auburn-haired miss from Kansas City, Mo.

"Dee" is a five-foot, eighteen-year-old sophomore at Webster College in St. Louis, where she is majoring in dietetics. Her activities at Webster include, student government assistant, home economics club and the international relations club.

Outside of school, she's interested in swimming, skating, fishing and water skiing.

Mary Dee was also Sig Ep's candidate for the 1958 Military Ball so this is not a new adventure into the world of Queens for this little red-head.

THETA KAPPA PHI



Sandra Prothero

To the Court of Love and Beauty, Theta Kappa Phi proudly presents a pretty brunette named Miss Sandra Prothero. A resident of St. Louis since her birth, Sandra graduated from Beaumont High School in 1956 and now holds an office manager's position at Southwestern Bell Telephone.

Swimming is the favorite of Miss Prothero's recreations during the summer months with bowling holding her special attention during the winter months. Throughout her years in high school, she excelled in student leadership and demonstrated her singing ability as a member of the school choir.

Miss Prothero is pinned to Vince Ventimiglia who will be her escort for the St. Pat's celebration.

TRIANGLE



Dede Nadler

Triangle's representative at St. Pat's Ball is Miss Dede Nadler. She is 19 years old and is from Chicago, Illinois. She is presently employed as a private secretary for the Illinois Power Company. She is five feet four inches tall, weighs 110 pounds, has blonde hair and blue eyes. She graduated from Notre Dame Academy in 1957. While at Notre Dame she was on the St. Pat's Court and graduated with high honors. Also while at Notre Dame she was Assumpta School's Prom Queen and Triangle's candidate for St. Pat's Ball at the Military Ball. Her hobbies are swimming, skating and ice skating. Her dimensions are 35-21-34.



Miners Place Second With 4-1 MIAA Football Record

ALL CONFERENCE BACKFIELD PAVES WAY TO SUCCESS AS WHEELER SETS FOUR NEW SCHOOL RECORDS

by Jerry Luecke

Last fall, when bright new fraternity beanies dotted the campus, and many a freshman was still trying to locate the whereabouts of Parker Hall, the Miners opened their football season, not quite knowing what to expect in the won-lost department. The Miners' veteran coach, Gale Bullman, at the season's onset had a professionally pessimistic attitude toward the Miners' gridiron fortunes because of the general youth of the team and the tough schedule to be faced.

According to Coach Bullman's plan of facing tough teams before opening the conference schedule, the Miners met up with two of the best small college teams in the nation in Northeastern Oklahoma State and Lincoln U. The Indians of Northeastern Oklahoma, in the first game of the season, put down the Miners 20-3. In the second game of the new campaign, the Miners were thoroughly squashed by the fast, hard-hitting crew of Lincoln U.

After the disastrous game with Lincoln, the Miners' period of seasoning had been completed, and

defeated a flu-wracked Miner squad for the conference title. This year again the Cape game shaped up as the game upon which the conference title depended. The host "Injuns" were not to be denied as they defeated the Miners 19-7. Much like the Wash. U. game, there were several factors which could have brought the game into Miner hands, but such things were not to be as Cape won the game and subsequently the conference crown.

In quick succession the Miners defeated Kirksville 27-20, Maryville 26-7, and Springfield, to round out the season schedule with a very creditable 5-4 won-lost mark.

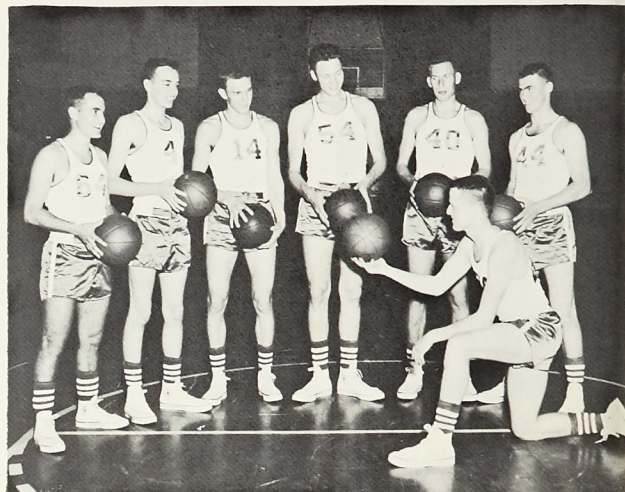
The Miner success last season was the result of a well-balanced team effort. The hardnose Miner offensive and defensive linemen did an extremely good job during the season, and for the most part was the best line in the conference loop. Names like All-Conference Linemen Bob Ingram, Joe Gay Mike Hillmeyer, Charles McCaw, Jim Marble, and Louis Meisenheimer were well known in the conference for their consistent

high quality line play. End Gerry Metcalf and Linebackers Ron Avery and Jim Kamicar proved themselves invaluable to the Miner cause.

In the backfield, the Miners were unsurpassed in the conference. The backfield of Wheeler Cooper, Parker, and O'Mealy was the scoringst backfield in the conference and probably the most versatile. Quarterback Dub Wheeler was the quarterback All-Conference selection, and broke a total of four school records with his rapier like passing. Tom Cooper, the Miners' left halfback, also made the All-Conference squad at his position. Cooper led the team in rushing and pass receiving, and placed third in the conference in scoring and first in pass receiving.

Ray Parker filled the Miner fullback slot and did an admirable job as he was an All-Conference selection for the second consecutive year. Ray was the second leading scorer in the loop, second leading pass receiver, and number four punter in the conference. At right halfback was Pat O'Mealy. Pat did a fine job at his post and ranked high in the scoring and pass receiving departments.

As you might well see, all in all the Miners had a very fine season and about all that can be said about future Miner football fortunes is, "Wait 'til next year."



Nucleus of the '58-'59 squad which was captained by Lynn Rockwell (kneeling).

Round Ballers 5-15 In Dismal Season

Eight players lettered as the Miners, with five wins and fifteen losses, completed their 1958-59 Basketball season.

Lettering were John Sturm, Gene Brenning, Larry Dix, Bob Schaefer, Jim Lemon, Bob Lewis, Capt. Lynn Rockwell and Lucas. Brenning has been chosen Captain of next year's team.

Looking back over the season we see many highlights among the more prominent is John Sturm who dominated the team's offensive attack as he scored 448 points in 20 games for a 22.4 game average. Scoring 216 points in league play he tied Swift of Kirksville for scoring honors in the MIAA Conference.

Starting the season with five returning lettermen (Sturm, Brenning, Rockwell, Schaefer, and Dix) the Miners lost their opening game at Lincoln, 79-55, but bounced back and beat Blackburn as Sturm led the attack with an all time MSM record for most points in a game, 38. Rebounding from a 94-72 loss to Southern Illinois University the Miners upset Harris Teachers' red hot seven game winning streak and downed Greenville, 96-67. Then the squad met with several defeats including a loss to Washington University which seems to exemplify of the Miners slow first half and a lack of all-round rebounding ability.

The Miners opened their MIAA league play with a 68-66 victory at Warrensburg, which resulted from a last second tie breaking field goal by Rockwell. The Miners played one of their best games against Cape Girardeau, during which Schaefer hit eight field goals and four free shots to pace the Miners with 20 points.

A repeat battle with Warrensburg gave the Miners their only other league victory as they finished the season in the cellar with an eight and two conference record.

With an eye on the future it is easy to regard this season as a training ground for a much better Miner team of next year. With the

exception of Captain Lynn Rockwell, a senior and Bob Lewis, a junior, the same team will be back for the next two seasons. With the experience gained this year and with a little more speed the Miners will develop into a strong MIAA team with their ambitions far from a cellar birth.

Rockwell, the Miners best outcourt shot, consistently sank twenty footers. He had a 46% shooting average as sank 82 field goals in 177 tries to place second behind Sturm in the percentage of shots made.

Sturm let the team in field goal attempts, 323; field goals, 162; field goal shooting percentage, 50.2%; free throws attempted, 198; free throws, 124; total points 448; and total rebounds 233.

According to Coach Allgood, Schaefer was the most improved ball player on the squad. He ranked fourth in the scoring department as he scored 147 points for a 7.4 game average.

Brenning provided the Miners with a good defense as he grabbed off 68 rebounds and continually kept the opposition on its toes.

Dix provided the team with a steadying influence as he played his best in the clutch situations. With his speed and his ability to be where a loose ball is, he has helped to buoy the team through many a rough spot.

Lewis, the fastest man on the squad, possesses the natural ability to become an excellent ball player. Even though he was sidelined with injuries for part of the season, he was able to gain the third spot in both scoring, 165 points; and rebounding, 111 times.

Lemon, the only freshman to letter, shoots well from outcourt and has possibilities of being on next years starting five.

Lucas who, like Lewis, possesses much natural ability, needed this season's experience to round him out and will figure in the future plans of the Miners.

Ron Shelton, a freshman, missed lettering by a small margin and is expected to be of assistance to next years squad.

(Continued on Page 8)



Football Squad of '58

were anxiously looking forward to the game with Washington U. The annual rivalry between the Miners and the Bears was decided by a freak play, and the Miners went down to defeat 19-13.

Following the Washington U. defeat, the Miners clicked off two successive victories over the Kansas State Teachers and Warrensburg. The Miners' victory over Warrensburg marked their first conference win of the season.

Next in the succession of conference games was the all-important game with Cape Girardeau. A year previous, the Indians had

'58 SEASON RESULTS

MSM 3	N. E. OKLAHOMA	20
MSM 0	LINCOLN U.	50
MSM 13	WASHINGTON U.	19
MSM 7	CAPE	19
MSM 27	KIRKSVILLE	20
MSM 26	MARYVILLE	7
MSM 20	SPRINGFIELD . . .	13
MSM 34	WARRENSBURG . . .	18
MSM 20	K. STATE	12

Triangle Pins Down Wrestling Crown; Engineers Club KO's Boxing Title

A crowd of some 1800 persons witnessed the final intramural boxing and wrestling tournament held Friday, March 6, in Jackling gymnasium. The mat men of Triangle again received the wrestling trophy with 32 points, while the Engine Club won the boxing title, also with 32 points. Triangle placed six men in the finals, four of these in the wrestling competition while the Engine Club, who also

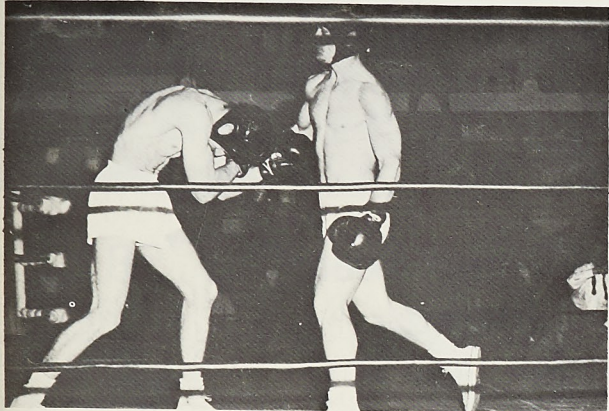
son of the Dorm; 165-pound class, Don Beuerlein of Kappa Sig over Hank Peterson, Lambda Chi; 165, Ken Howard, Shamrock, defeated Dennis Camp, Theta Kappa Phi; 175, Triangle's Gordon Hunter beat Jim Hesse of the Engine Club; 175, Charles McGrady, another Dorm entry, edged Warren Farness, Theta Kappa Phi; heavyweight, Jerry Rogenski, Triangle, took Mike Kandlbinder, Theta

Dorm; 165, Ken Howard, Shamrock, lost to Don Beuerlein, Kappa Sigma; 175, Gordon Hunter, Triangle, pinned Jay Bloodsworth, of Tau Kappa Epsilon; 175, Charles McGrady, Dorm, over Dave Hicks, Sigma Nu; heavyweight, Bill Englehardt, Engine Club defeated Jerry Rogenski, Triangle; heavyweight, Charles McCaw, Sigma Nu, over Ken Buck of Kappa Sigma.

Thursday evening—boxing—118, Reid Bohning, Kappa Sigma, over Gerald McMurtrey, Tech Club; 135, Mike Vancil, Engine Club, over Mike McDonald, Theta Kappa Phi; 145, Rodney Scott, Dorm, defeated Jim Stewart, Sigma Nu; 155, Charles Adams, Tech Club, lost to Doug Dunker of the Prospectors Club; 155, Bill Butcher, Sigma Nu, over Burke Richardson, Engine Club; 165, Tom Nicholson, Prospectors, over Gary Chullino of Sigma Nu; 175, Louis Whitehair, Engine Club, over Butch Siebert, Theta Kappa Phi; heavyweight, Wayne Vukson, Theta Xi, over Jerry Hahs, Tech Club.

Friday night's competition was probably the best and most thrilling, since each bout would determine another champ. The lucky guys, winning by default, were Don Mega of Triangle in the 118-pound wrestling class, and Dave Schimanski, of the Engine Club, an entry in the 126-pound boxing class.

This year's fights were probably



Lou Whitehair takes a right from Paul Wiegard before scoring a TKO for the 175-pound boxing title.

placed two men in the wrestling finals, had five boxing finalists.

The tournament finals were preceded by the preliminary bouts, held both Wednesday and Thursday evenings, starting at 7:30 p. m. and running through a schedule of approximately 18 matches per night. The matches were run off alternately starting with a wrestling bout, followed by a boxing event, and then another wrestling bout.

The prior events started with the 145-pound wrestling bout in which Tom Scott of Kappa Sig defeated Jim Klein of Theta Kappa Phi. Next was the 135-pound boxing preliminary match with another Theta Kappa Phi frater, Mike McDonald, defeating Donnie Featherston of Delta Sigma. Thad Flood, a Theta Xi ace, topped Jim Verdi of Sigma Nu in the 155 wrestling class. The fourth event of Wednesday evening was the 135 boxing bout. Here Robert Murphy, one of Triangle's finalists, topped Larry Howdeshel of the Tech Club.

In the remaining wrestling competition of Wednesday evening Kenneth Knoblock of Kappa Sig defeated Don Baldwin, Prospectors, in the 155-pound class; Ron Romana, Triangle, lost a 165-pound match to Alan Fergu-

son of the Dorm; 165-pound class, Don Beuerlein of Kappa Sig over Hank Peterson, Lambda Chi; 165, Ken Howard, Shamrock, defeated Dennis Camp, Theta Kappa Phi; 175, Triangle's Gordon Hunter beat Jim Hesse of the Engine Club; 175, Charles McGrady, another Dorm entry, edged Warren Farness, Theta Kappa Phi; heavyweight, Jerry Rogenski, Triangle, took Mike Kandlbinder, Theta

son of the Dorm; 165-pound class, Don Beuerlein of Kappa Sig over Hank Peterson, Lambda Chi; 165, Ken Howard, Shamrock, defeated Dennis Camp, Theta Kappa Phi; 175, Triangle's Gordon Hunter beat Jim Hesse of the Engine Club; 175, Charles McGrady, another Dorm entry, edged Warren Farness, Theta Kappa Phi; heavyweight, Jerry Rogenski, Triangle, took Mike Kandlbinder, Theta

son of the Dorm; 165-pound class, Don Beuerlein of Kappa Sig over Hank Peterson, Lambda Chi; 165, Ken Howard, Shamrock, defeated Dennis Camp, Theta Kappa Phi; 175, Triangle's Gordon Hunter beat Jim Hesse of the Engine Club; 175, Charles McGrady, another Dorm entry, edged Warren Farness, Theta Kappa Phi; heavyweight, Jerry Rogenski, Triangle, took Mike Kandlbinder, Theta

son of the Dorm; 165-pound class, Don Beuerlein of Kappa Sig over Hank Peterson, Lambda Chi; 165, Ken Howard, Shamrock, defeated Dennis Camp, Theta Kappa Phi; 175, Triangle's Gordon Hunter beat Jim Hesse of the Engine Club; 175, Charles McGrady, another Dorm entry, edged Warren Farness, Theta Kappa Phi; heavyweight, Jerry Rogenski, Triangle, took Mike Kandlbinder, Theta

son of the Dorm; 165-pound class, Don Beuerlein of Kappa Sig over Hank Peterson, Lambda Chi; 165, Ken Howard, Shamrock, defeated Dennis Camp, Theta Kappa Phi; 175, Triangle's Gordon Hunter beat Jim Hesse of the Engine Club; 175, Charles McGrady, another Dorm entry, edged Warren Farness, Theta Kappa Phi; heavyweight, Jerry Rogenski, Triangle, took Mike Kandlbinder, Theta

son of the Dorm; 165-pound class, Don Beuerlein of Kappa Sig over Hank Peterson, Lambda Chi; 165, Ken Howard, Shamrock, defeated Dennis Camp, Theta Kappa Phi; 175, Triangle's Gordon Hunter beat Jim Hesse of the Engine Club; 175, Charles McGrady, another Dorm entry, edged Warren Farness, Theta Kappa Phi; heavyweight, Jerry Rogenski, Triangle, took Mike Kandlbinder, Theta

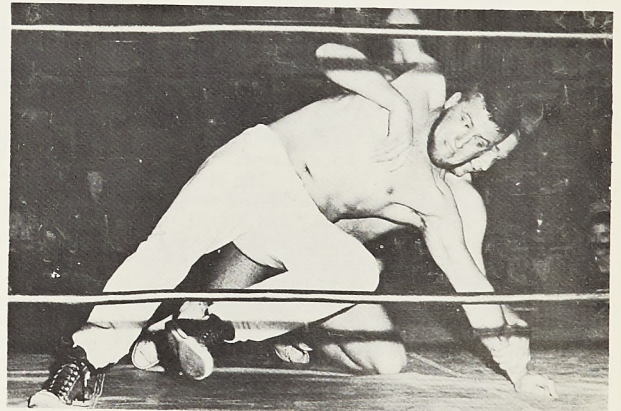
Friday night's competition was probably the best and most thrilling, since each bout would determine another champ. The lucky guys, winning by default, were Don Mega of Triangle in the 118-pound wrestling class, and Dave Schimanski, of the Engine Club, an entry in the 126-pound boxing class.

The first actual match of the night was the 126-pound wrestling class, in which Ted Jones of the Engineers made quick work of Bill Love, Triangle, by pinning him in one minute, forty-seven seconds of the first round. The next event was the 118-pound boxing class, which went the whole distance of three two-minute rounds with Reid Bohning of Kappa Sigma the decided winner over Greenville Rudd of the Engine Club. In the 135-pound wrestling class, Glen Niblock of the Prospectors Club and runner-up of the 135-wrestling class in 1958 became champ this year by pinning Jan Coester of Sigma Nu in one minute, seventeen seconds of the third round. The next attraction was the 135 boxing class in which Mike Vancil defeated Bob Murphy of Triangle with a TKO, thus adding more points to the Engineers' total. This was the third straight year in which Vancil has taken the crown in one of the boxing classes. The seventh event of the night was a close mat match between Tom Jordan.

Friday night's competition was probably the best and most thrilling, since each bout would determine another champ. The lucky guys, winning by default, were Don Mega of Triangle in the 118-pound wrestling class, and Dave Schimanski, of the Engine Club, an entry in the 126-pound boxing class.

Friday night's competition was probably the best and most thrilling, since each bout would determine another champ. The lucky guys, winning by default, were Don Mega of Triangle in the 118-pound wrestling class, and Dave Schimanski, of the Engine Club, an entry in the 126-pound boxing class.

Friday night's competition was probably the best and most thrilling, since each bout would determine another champ. The lucky guys, winning by default, were Don Mega of Triangle in the 118-pound wrestling class, and Dave Schimanski, of the Engine Club, an entry in the 126-pound boxing class.



Bill Engalhart tries fruitless attempt from Charlie McCaw. McCaw won the heavyweight crown.

Butcher corrected himself, giving Butcher the decision in a close three-round match. Tom Cooper of Sigma Nu dominated the 165-pound wrestling by pinning Don Beuerlein of Kappa Sigma in one minute and ten seconds of the first round. The 165 boxing classification was an addity. Tom Nickelson of the Prospectors Club won the match with the disqualification of Dan Pulliam. Pulliam of the Tech Club was getting the better of Nickelson in the blue corner when Nickelson went to his knees. It appeared as if Pulliam forgot what he was doing and kept right on pounding Nickelson, thus disqualifying himself. In the thirteenth event Gordon Hunter of

the best yet; and it is certain that the audience enjoyed them. The final standings came up with these figures:

Wrestling—1959			
Place	Organization	Mtch.	Points
1	Triangle	32	400.0
2	Sigma Nu	28	350.0
3	Kappa Sigma	16	325.0
4	Prospectors	15	300.0
5	Dorm	11	275.0
6	Engineers Club	10	250.0
7	Theta Xi	6	225.0
8-9	Theta Kap. Phi	4	137.5
	Lam. Chi Alpha	4	137.5
10	Shamrock	3	100.0
11-12	Tau Kap. Eps.	1	85.0
	Delta Sig. Phi	1	85.0

Parade of Champions

BOXING—L. to R.

- 118 Reid Bohning—Kappa Sig.
- 126 Dave Schimanski—Enginrs.
- 135 Mike Vancil—Engineers
- 145 Rodney Scott—Dorm
- 155 Bill Butcher—Sigma Nu
- 165 Tom Nicholson—Prospectrs.
- 175 Louis Whitehair—Engineers.
- HW Wayne Vukson—Theta Xi

WRESTLING—L. to R.

- 118 Don Mega—Triangle
- 126 Bill Love—Triangle
- 135 Glen Niblock—Prospectors
- 145 Tom Jordan—Prospectors
- 155 Leslie Davis—Triangle
- 165 Tom Cooper—Sigma Nu
- 175 Charles McGrady—Dorm
- HW Charles McCaw—Sig. Nu



Record Breaking Tank Team Wins Six

GARY BROYLES HIGH POINT MAN AS RECORDS FALL

by Rich Wallace

The M. S. M. swimming team of 1958-59, though lacking experience, was still able to win six of their nine meets.

Working with a team of six freshmen, five sophomores, one junior and no seniors, Coach Burr Van Nostrand was able to win two-thirds of the meets while developing a team which should be formidable in the next two years.

Beginning the season at home, Dec. 13, the Miner tankmen wasted little time in dunking a weak Fort Hays State team, 65 to 21. Versatile freshmen Jim Phillips won both the 200-yard backstroke and 200-yard breast stroke, and swam on the winning 400-yard medley relay team. Gary Broyles also won two events, taking the 220 and 440-yard freestyle events.

Returning from the Christmas holidays, the Miners began working hard for the string of meets which lay ahead. On January 10 the M. S. M. tankmen traveled to St. Louis University for a meet with the Billikens. Once again Jim Phillips led the team to a 52-34 victory with a double victory and a relay win.

The following week-end, Jan. 16-17, proved tragic to the Miners. Friday evening the Washington University Bears swept both relays to submerge the M. S. M. swimmers 54-32. Traveling to Carbondale, Ill., Saturday afternoon, the Miners took on an extremely powerful Southern Illinois team. Using swimmers from Germany, Australia and all parts of the United States, the Salukis broke twelve school and pool records to sink the Miners 62-24. Art Farnham provided the team's only victory by taking the fancy diving.

Illinois State Normal University was the Miners' next opponent as the team traveled to Bloomington, Ill., Jan. 30, during the layover between semesters Roy Smith and Gary Broyles led the team to the 56-30 win as Roy took the 50 and 100-yard freestyles, and Gary won the 220 and 440-yard freestyle events. Both men also swam on the winning 400-yard freestyle relay team. The

meet was also noteworthy in that it was the last for Larry Peterson this year. Larry, star freshman butterfly and key man on the medley relay, is a co-op student and is working the second semester.

Replacing Peterson on the 400-yard medley relay team was Coach Van Nostrand's main problem during the first week of the second semester. He finally decided to sacrifice his ace freestyle sprinter, Roy Smith.

Roy proved quite sufficient on the butterfly leg of the medley relay as well as in the freestyle relay, for the Miners won both relays to take a thrilling home meet from Louisville University, 45-41. John Woodward, star diver last year, won the 100-yard freestyle and anchored both winning relays.

The following Saturday, Feb. 14, the Miners tackled one of the two teams to beat them last year, Pittsburg University. The Gorillas repeated last year's win by taking both relays to win 54½ to 34½. Gary Broyles won two events again, taking the 220 and 440-yard freestyles. Dick Greeley and Art Farnham also won individual events.

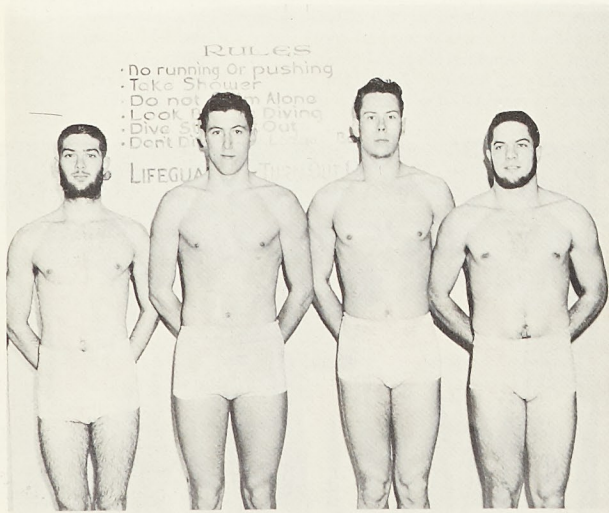
The Miners finished the season on the week-end of February 20 and 21 with two home meets. On Friday evening the Miners were hosts to Indiana State. Setting two new records, the team glided in to a 56-29 victory. Jim Phillips set a new M. S. M. record in the 200-yard backstroke, and the freestyle relay team of Smith, Greeley, Broyles and Woodward cut 3.7 seconds off the M. S. M. and pool record. Broyles led the team with

The parachutist was dangling forlornly from a big oak tree. "I was trying to make a record," he shouted to the farmer below.

"Reckon yuh did it, stranger," observed the farmer. "You'll be the fust man in these parts to climb down a tree withouten he clumb up it fust."

Most of us insist on the best, and then complain about the price.

In Record Time: 400 Free Style



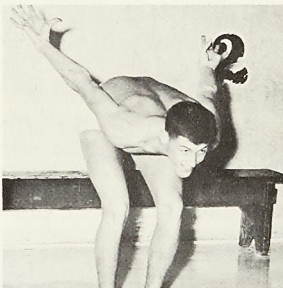
New school mark of 3:47.9 in the 400-yard freestyle relay was set by the above team consisting of John Woodward, Gary Broyles, Rich Greeley, Roy Smith.



MSM Swimming Team For '58

a double win as well as the relay victory. John Woodward was also in top form, winning the 100-yard freestyle and anchored both relay teams.

High Point Man



GARY BROYLES

The next day the tankmen were again in top form as they drowned Westminster 57-27. The highlight of the meet was once again the freestyle relay team as they cracked their own record by 1.7 seconds. Having ben lowered 5.4 seconds in two meets, the record now stands at 3:47.9, quite a challenge for next year's team.

Results of the meets were:

MSM 65—Ft. Hays State	21
MSM 52—St. Louis U.	34
MSM 32—Washington U.	54
MSM 24—S. I. U.	62
MSM 56—Illinois Normal	30
MSM 45—Louisville U.	41
MSM 31½—Pittsburg U.	54½
MSM 56—Indiana State	29
MSM 57—Westminster	27

Individually the team also did quite well. Besides developing a crop of young swimmers, there were two new school records set. One was by Jim Phillips who established the school mark in the 200-yard back at 2:28.5. The other was set by the 400-yard freestyle relay team which lowered the mark to 3:47.9. Sophomore freestyler Gary Broyles was high-point man for the year with 80.0 points. Final point totals were:

Gary Broyles 80.00; Jim Phillips 66.50; Roy Smith 43.00; John Woodward 42.25; Rich Greeley 42.25; Art Farnham 35.00; Jim Staley 32.50; Larry Peterson 28.00; Rich Wallace 15.00; Jerry Catron 14.00; Myron

Bruns 13.00; Tom Miller 8.00.

The Miners have much to look forward to next year. No one will be lost by graduation and, with a year's experience under their belt, the team should really be able to do honor to the school and to its great coach, Burr Van Nostrand.

Basketball

(Continued from Page 6)

With Springfield, Cape Girardeau and Kirksville expected to dominate an even tougher league next year the Miners will find the going rough. But with eight returning lettermen along with the experienced gained this season the Miners will be able to finish next season with one of the best teams in the history of MSM.

First place Springfield, playing in the NCAA regional at Springfield, Missouri, has downed its first opponent, Abilene Christian of Texas, 87-67. While Centenary College won over Western Illinois 84-76 at the Springfield regional. Team Statistics

	Miners	Oppon.
FGA	1219	1314
FG	479	572
Pct.	.394	.435
FTA	609	568
FT	370	390
Pct.	.609	.686
Total Pts.	1324	1544
Rebounds	676	772

Season Games

	Us	Them
Lincoln	55	79
Blackburn	90	74
SIU	72	94
Greenville	96	67
Harris T.	73	63
Westminster	41	84
U. of Tenn.	74	79
Washington U.	53	60
Lincoln	81	98
Warrensburg	68	66
Washington U.	51	52
Springfield	57	85
Springfield	51	89
Cape	63	77
Maryville	49	56
Warrensburg	76	74
Cape	78	91
Kirksville	76	95

If the man is gay, the girl is likely not to be gay that evening, the reason for which is a mystery.

All of us learn valuable lessons as we go through life, but the trouble is that too often we learn them too late.

UPTOWN THEATRE

MOVIES IN CINEMASCOPE

Friday and Saturday, Mar. 13-14

'Bull Whip'

Guy Madison, Rhonda Fleming

Sunday, Monday, Tuesday and Wednesday, Mar. 15-16-17-18

Sunday Continuous from 1 p.m.

'Rally 'Round The Flag Boys'

Joanne Woodward, Paul Newman

Thursday, Friday and Saturday, Mar. 19-20-21

'Ride Lonesome'

Randolph Scott and Karen Steele

FRIDAY, MARCH 13, 1959

RITZ THEATRE

MOVIES ON WIDE SCREEN

Friday and Saturday, Mar. 13-14

Saturday continuous from 1 p.m.

'Torpedo Run'

Glenn Ford and Ernest Borgnine

— PLUS —

'Last of the Fast Guns'

Jock Mahoney and Linda Cristal

Sunday, Monday and Tuesday, Mar. 15-16-17

Sunday Continuous from 1 p.m.

'Villa'

Brian Keith and Cesar Romero

— PLUS —

'The Sun Also Rises'

Tyrone Power and Ava Gardner

Wednesday-Thursday, Mar. 18-19

Adm. 15c and 35c

'Harry Black And the Tiger'

Stewart Granger, Barbara Rush

— PLUS —

'Murder by Contract'

Vince Edwards, Michael Granger

St. Patrick's Celebration This Year Marks Fifty-first Anniversary

"Read all about the proposed St. Pat's Board in this issue and be prepared to vote on it Thursday, December 11, at Parker Hall." This announcement was taken from a December 9, 1930, issue of The Missouri Miner.

On Thursday, December 11, the student body voted on and adopted the St. Pat's Board by a three-to-one majority, the most important student body vote in the history of MSM. For this was the beginning of St. Pat's as we know it today. Not a mediocre party weekend, but a well organized, well financed celebration, managed by an experienced group.

The St. Pat's Board of 1930-31 not only raised enough money to

finance St. Pat's that same year, but made over 600 dollars, thus removing any doubts about the success and future of the St. Pat's Board.

Money that year was obtained by the St. Pat's Board by various means, some of which are continued to this day. One of their first efforts to raise money was a raffle, the main prize being ten dollars in cash. Other prizes, kindly donated by friendly Rolla merchants, ranged from a bottle of cough syrup to a pair of Bostonian shoes. School spirit must have been great in those days to get fifty cents for those raffle tickets.

Wednesday night, January 21.

they held their first benefit show. "The Passion Flower," starring Kay Johnson, Kay Francis and Charles Bickford was shown at the Lyric Theatre and the proceeds were shared with the St. Pat's Board.

A bridge tournament and benefit dance rapidly followed to add to the increase in funds.

That St. Pat's celebration exceeded all former occasions of its kind and laid the foundation for the St. Pat's celebration as we know it today.

"This is a cottage pudding."
"Whew—I think I got a piece of shingle in my mouth."

Shillelagh Tradition

The shillelagh, as carried by many of our freshmen, reminds us that it was St. Patrick who drove the snakes from the Emerald Island. But there is a story behind this, and this tale when unfolded reveals many of the exploits of St. Patrick over 1500 years ago.

The great mountain of St. Patrick in Ireland was the refuge of our patron saint for many years. One day, while St. Patrick was inside the cave praying for the welfare of his people, all the demons of Eire came down and gathered at the base of the mountain. In great droves and swarms they came, some as serpents crawling on the rock, others as monstrous birds of prey, filling the air and darkening the sky. St. Patrick, reaching for his golden bell, rang

it lustily. The bell was a symbol of his gospel, and the sound of it was heard throughout Ireland, bringing peace and joy to all. Hearing the bell, the demons scattered, and were so frightened they fell into the sea and were drowned. From that time until seven years later, there was not an evil creature in the whole of Ireland.

The life of St. Patrick was spent in freeing his people from the dreaded cult of devil-worshipers, the Druids. He was born in Scotland in the year 387, of a Roman father and a French mother. At the age of 16, young Patrick was sent into slavery. Later he was taken into Ireland, and there sold to a Druidical high priest named Milchu, whose

(Continued on Page 13)

Alumni News

John G. Duba, alumnus of MSM graduating in Civil Engineering in the Class of 1949, is termed the "deputy mayor" of Chicago, Illinois.

John has completed his first year in the newest "hot spot" in Chicago's massive city government. Although his job is officially, chief administrative officer to Mayor Daley, he is known around City Hall simply as "the deputy mayor."

The mayor hired Duba to get more things done faster in the city government. In carrying out that task, Duba said, he has been forced to step on some toes and to push and prod people who previously were not used to such treatment. But Duba has made few—if any—enemies for a man with such a touchy job.

Duba got the job, the mayor said, on his merit as a highly trained professional administrator specializing in public works.

Although he won't take credit for it, all of the city's major programs are moving either on schedule or ahead of schedule and Mayor Daley has very clearly indicated Duba is responsible for the speed-up.

Duba has tried to avoid public spotlight in favor of work behind the scenes—much of it in his sixth floor City Hall Office while chewing a black cigar. He also meets visiting dignitaries and delegations when the mayor is unavailable—and for this he takes over Daley's office.

University Dames

The University Dames' regular meeting will be held in Parker Hall Auditorium March 19 at 8 p. m.

Fred Remington and Mike Cave will present a concert featuring piano solos and duets. A variety of music will be included in the program.

The slate of officers for the coming year will be presented by the nominating committee.

This is the last meeting at which dues may be paid.

Angry Father: "What do you mean bringing my daughter in at this time of the morning?"

Miner: "I've got a 7:30 o'clock class."

"Maw, shore is too bad about our two daughters layin' up thar in the cemetery."

"Shore is, Pa. Sometimes I wish they was dead."

PIZZA
MEAL TICKETS AND SPECIAL RATES FOR MINERS
CAL - MO CAFE
11th and Highway 63
Open 7 Days a Week

COLD BEER DON BOCKHORST LIQUORS
EAST SIDE GROCERY & BEVERAGE
904 Elm St. Phone EM 4-3218

THINKKLISH

English: SCANDAL MAGAZINE

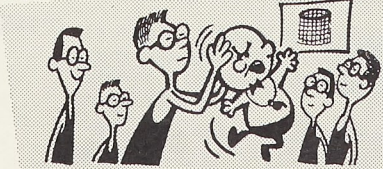


Thinklish translation: This magazine is put out by a bunch of troublemakers. Their other monthly offerings: a horror series (feariodical), pin-up pictures (leeriodical) and a fortune tellers' gazette (seeriodical). Naturally, none carries ads mentioning the honest taste of fine tobacco. Who'd want Lucky Strike mixing with that crowd? As for the scandal sheet, it's a smeariodical which deserves nothing but snublicity.

MAKE \$25

Start talking our language—we've got hundreds of checks just itching to go! We're paying \$25 each for the Thinklish words judged best! Thinklish is easy: it's a new word from two words—like those on this page. Send yours to Lucky Strike, Box 67A, Mt. Vernon, N. Y. Enclose name, address, college and class.

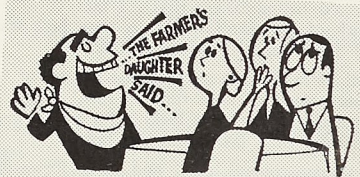
English: NEARSIGHTED BASKETBALL TEAM



Thinklish: SQUINTET

BERNICE WYER, WESTBROOK JR. COLL.

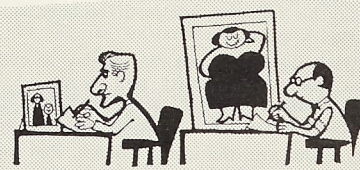
English: CONVERSATION ENDER



Thinklish: STOPIC

LARRY GINGER, EASTERN ILLINOIS U.

English: ENLARGED PICTURE



Thinklish: BLOATOGRAPH

ALDACE HOWARD, PACIFIC U.

English: BIKINI BATHING SUIT



Thinklish: PUNIFORM

R. BYRON GODFREY, N. CAROLINA STATE

English: POLICE PUBLICITY



Thinklish: COPAGANDA

WALTER FREY, III, TRINITY COLLEGE



Get the genuine article

Get the honest taste of a LUCKY STRIKE

The First Beard Contest

From out of the past and ancient days of the Missouri School of Mines
There comes an old tradition we recall
The foundation of our culture along the Ivy Leaguer's lines
The establishment of a heritage for all.

As a rule we are all so busy that we little care or know
Of the heritage of tradition that is ours.
So it is my intention that no longer shall you go
On living in ignorance by the hours.

Now as we enter in a new year which holds promise for us all
The tradition that is most practiced and revered
Comes to us now in fashion—yea comes demanding in its call
Exhorting every Miner to grow a beard.

But this heritage so precious which we accept without a thought
Has had a history which borders on romance
Yet the privilege and the glory which was paid in blood when bought
Isn't remembered by a Miner 'cept by chance.

Every legend and tradition must have its one beginning
And by the very graciousness of fate
I've the tale of the first beard contest—the tribulations of its winning
I hope by St. Pat's beard I'm not too late.

It was not a game for weaklings in those golden days of yore
It was for lusty men of lusty ways
They entered for the glory, for the fame, and nothing more
Except, perhaps, a bit of St. Pat's praise.

Now beards were not uncommon on the campus way back then
They were not the least bit novel anyhow
Those Miners didn't have much—that is their wallets were rather thin
In that respect it was the same as now.

Now there were two outstanding beards among the student engineers
One was flaming red, the other black
And the dispositions of their owners matched the hair below their ears
And their friendship was noted by its lack.

Now Reynard the Red was crafty, so they called him "Fox" for short
He was proud as any man could ever be
A slave to his own vanity, a conceited, boasting sort
Who practiced his own brand of trickery.

While "Jack the Black," if you looked at him you'd say he was rather
cool

But then you'd be mistaken, that's a fact,
For the truth of the whole matter is that Jack was just plain cruel
But he had a compensatin' sense of tact.

The students were divided between the cliques of black and red
And inter-party feelings were running raw,
While the pacafists were busy looking for a way instead
To end the fight in a fashion of the law.

Then the student council acted and came forward with a plan
To have a "Whisker contest" on St. Pat's day
At which time the cliques would enter their favorite "hairy man"
With the decision of St. Patrick victory lay.

Now Red was very confident so resplendent were his "locks"
So he only gave his chin its usual care,
Until one day his followers informed the boasting "Fox"
That Jack was using fertilizer on his hair.

"Oh, that 'Jack the Black' will rue the day he ever sought to win
This contest from such a crafty soul as me,
For have I not the strength of seven, and the intellect of ten?
Calm your fears ye comrades, wait and see."

So one inky night, yea, the ides of March, Red came sneakin' round
He found ole Jack a drinkin' a frosty brew,
And he made a mental note of the beer spilled on the ground
And the wet streak in Jack's whiskers it came through.

Then he slipped away unseen to the drugstore down the street
And bought some hair destroyer, "guaranteed"
He slipped it into Jack's glass, when Jack had "left his seat"
Then hid to watch the consequences of his deed.

Sure enough Jack sloshed it down, just like Miners today will do
And the flecks of foam glistened on his beard.
Then that destroyer started working, and my friends I'm telling you
In two minutes flat, Jack was looking sheared!

But Jack paid no attention to his chin hair falling out
For he knew the "Fox's" weakness was vanity,
So he kept right on drinking while his sharp eyes searched about
And while his tortured lips withheld profanity.

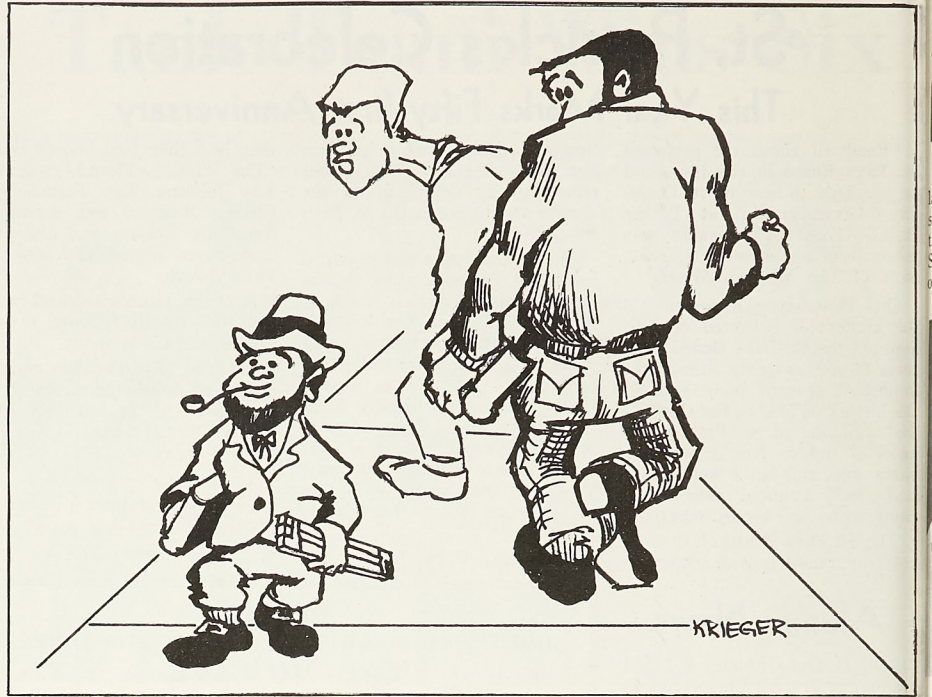
The victory was too complete for Red to hold his peace
He gave himself away by laughing low
But to his surprise before his lips could make the chuckle cease
"Jack the Black" had landed his first blow.

Jack grabbed Red by his scarlet beard and swung him 'round and
'round

He tossed him as a cat will toss a mouse
Then he started throwing handfuls of Red's chin hair on the ground
Leaving not enough to hide a single louse.

So the contest was to be a sham when St. Patrick came to town
Unless the other Miners entered in,
Thus the custom was established which the years have handed down
And it's every Miner's hope that he will win.

So you see, traditions are sacred things, they give us fame and glory
They should be kept in loyal hearts endeared
For the stature of a college sometimes depends on such a story
As the olde and honored, Contest of the Beard.



Scoring big with slick ideas
like the Electronic Secretary® answering unit,
product of *America's second largest telephone system*

Your phone is always "tended" when an Electronic Secretary unit is on your "line." For it answers calls in your absence and takes messages as well!

Here's how it works. When your phone rings, a recorded voice informs the caller that you are out—and invites him to leave his name, number and any information he wishes you to have.

When you return—or when you phone in—all calls are repeated to you word for word. Result: no more "missed" messages, no more lost business, no more worrying about leaving the phone unattended any hour of the day or night.

This is just one of many ways Gen Tel is adding new dimensions to telephone communication. We know that, in an America which is expanding fast on all fronts, it is imperative to expand both telephone service and telephone versatility.

And we're meeting the challenge by developing new products and better methods for bringing more and more people together.



**GENERAL
TELEPHONE**

St. Pat's Board Responsible For Annual Gala Celebration

Ah, at last it's arrived. MSM's largest campus celebration of the school year is underway. Ditch those books and grasp that glass; St. Pat's is finally here. A gala of parades, dances and just plain

dormitory. Half of the members of the board are juniors and the other half are seniors. The numerous tasks performed by the St. Pat's Board include the picking of an orchestra, the nomi-

nation of a queen, and the judging of the annual beard contest. Of course there are many other duties which the board performs, but they are too numerous to mention. Various committees are dispatched by the president to cover these various tasks.

A very commendable factor of the St. Pat's board is that they receive absolutely no financial aid from MSM or any other source. The funds needed are raised via the selling of dance tickets and the sponsoring of various movies. The initiative and business-like ingenuity on the part of the board overcomes all foreseeable obstacles to provide the Miners with an annual celebration worth looking forward to.

Last year the board celebrated their thirtieth anniversary as a campus organization. Their arduous work and tedious efforts are greatly appreciated by the MSM student body.



Officers: President, Al Gregson; vice-president, Jim Kozeny; secretary, Newton Wells; treasurer, G. J. Murphy.

"having a ball" are all in store for the Miners during the annual St. Pat's celebration.

One may wonder just who could plan, promote, and handle the many preparations that are involved in keeping 2800 Miners occupied for four days. Obviously for a school of this size, a gigantic amount of work is involved in the carrying out and production of such an affair. Strangely enough, the credit for this tremendous job goes to a small group of thirty-six Miners, all of whom comprise the St. Pat's board. There are two representatives from each fraternity on campus and four representatives from the



Members of the St. Pat's Board which represents all organizations on campus.

Freshman Proves for All Time That St. Pat Was Really an Engineer

For several years now, a debate was waged pro and con as to whether good St. Pat was really an engineer. It is known for certain that he has been given several honorary degrees to that effect by various assorted and sundry engineering schools, but records of his claims to that distinguished title have been lost in the shuffle of mankind.

Some time ago, a freshman, while browsing through the library at MSM chanced upon a thesis written by a former student for his masters degree. The man had been a chem, and for his paper had elected to do extensive research on the origin and composition of Irish whiskey.

In his search, he was shocked to discover that the accepted formula was not the one which was first used. It seems that along about the 17th century there was some change in the distilling process, and furthermore, this revision had been suggested by none other than St. Patrick himself.

Delving deeper, he was rewarded with the actual facts of the case as recorded by Patrick himself in his annual report to the Association of Scotch and Irish distillers in 1658. Prior to that memorable year, the good citizens of Ireland became obsessed with queer halucinations whenever they partook of a little of the spirits. Pat attributed this to cross pollenization of the grain crop with some unfamiliar vegetation by a terrific influx of crickets that year. The effect was that shortly after consumption, the drinker would begin to see snakes—all colored ones, but green seemed to predominate—floating about his head.

At first this was believed to be the evil spirits coming out in those who saw them, but when good St. Pat began to complain of identical symptoms, a citizens committee decided that a time for action had arisen. Now Patrick was the leader to whom all

(Continued on Page 14)

GILBERT'S BARBER SHOP

(Across from the Rollamo)

4 Chair Service

"Air Conditioned for Your Summer Comfort"

PORTER SERVICE

Do You Think for Yourself? (TAKE THIS TEST AND FIND OUT!*)



1. Does it bother you to admit that you haven't read a very popular book? YES NO



2. Do you think there are degrees of cheating in a game or examination? YES NO



3. Are there certain foods you feel sure you'd dislike without having ever tried them? YES NO



4. Would you be seriously concerned to read in your horoscope that catastrophe would befall you tomorrow? YES NO



5. Do you often fall short of cash several days before your pay or allowance is scheduled to come through? YES NO



6. When you're driving, do you like to be first getting away from a stop light about to change? YES NO



7. Would you be reluctant to learn a new sport in the presence of friends who were experts? YES NO



8. Have you found it to be personally true that "a man's best friend is his dog"? YES NO

9. Do you believe your choice of a filter cigarette should be based on hearsay? YES NO

If you're the kind of person who thinks for yourself, then choosing a cigarette will be based on a careful study of the facts—not on quick decisions.

Men and women who think for themselves usually smoke VICEROY. Their good judgment tells them there's only one cigarette with a thinking man's taste. And that cigarette is VICEROY.

*If you've answered "NO" to eight out of the nine questions above, you really think for yourself!

© 1959, Brown & Williamson Tobacco Corp.



Familiar pack or crush-proof box.

The Man Who Thinks for Himself Knows — ONLY VICEROY HAS A THINKING MAN'S FILTER...A SMOKING MAN'S TASTE!

GAMMA DELTA

This past weekend, March 6, 7 and 8, the Alpha Phi chapter of Gamma Delta here at M. S. M. received the honor of holding the 1959 Regional Gamma Delta Convention. On Friday at 5:00 p. m. registration was held at the student center of the Lutheran Church for the representatives of the following chapters: Alpha—Washington U.; Omicron—University of Missouri; Alpha Alpha—S. I. U.; Alpha Phi—M. S. M.; Alpha Zeta—Cape Girardeau; Beta Eta—Warensburg; Gamma Beta—Harris Teachers College; and Epsilon Lambda—Maryville.

At 9:00 p. m. the Regional Board met at the church to plan the material to be considered at the Saturday business meeting. Late that evening the Vesper Service was held at the church with the Rev. Paul Czamanske, campus pastor from Columbia, delivering the sermon called "Shibboleths of Christianity" from the twelfth chapter of Judges.

On Saturday the day was devoted primarily to the morning and afternoon business meetings. In the morning the Gamma Deltans met in the church basement to discuss the report from the 1958 International Board of Governors. The major objectives of the International level of Gamma Delta for 1959 are the following:

- 1) more meaningful emphasis on Christian knowledge and service,
- 2) continued growth,
- 3) continued improvement of publication,
- 4) an International Retreat commemorating the 25th anniversary of Gamma Delta.

The twenty-three resolutions passed by the International Board of Governors were then discussed, and the convention adjourned for lunch. After the meal the Gamma Deltans met again in Room 107 Mining Building for the election of the following regional officers:

International Representative—Orville Wolters, Alpha Alpha
 President—Allen Tess, Alpha
 Vice-President—Rogene Kellerman, Alpha Phi
 Secretary—Marianne Meier, Alpha
 Treasurer—Ernie Merts, Epsilon Lambda

The new president then appointed the Mid-Westerner Editor, the Program Chairman, the Archivist, the Pastoral Advisor, the Alumni Delegate-at-Large, and Harold Kosten from M. S. M., the Publicity Chairman.

At 6:30 the convention banquet began with over one hundred persons attending. After the dinner the Toastmaster, Mr. Robert Wolf, introduced the guests. Entertainment followed with a skit, a quartet, and concluded with a magic act by Herb Loeb. The highlight of the evening was an address, "The Road Ahead," by Dean Wilson. After the banquet the visiting Gamma Deltans had free time in which to see the night life in Rolla.

The next morning at 9:00 a. m. Professor A. Repp from Concordia Seminary in St. Louis held Bible class which all the Gamma Deltans attended. During the following church service, the new regional officers were installed; and the members of Gamma Delta, seated in a body, joined in the singing of a special anthem immediately after the installation of their officers.

After the church service, the M. S. M. Gamma Deltans bade their new friends farewell and wished them a safe journey home, concluding a very successful convention.

"Your hair is thinning sir. Ever try our hair preparations?"
 "No—I can't blame it on that."

I won't say the orchestra at the dance was bad, but a waiter dropped a tray full of dishes and

six couples started dancing.

The Polar explorer was regarding his trophies. "You know,

they really should have given these things to my dogs. They discovered the pole first."

TOKY'S BAR-B-Q
 — OLD KENTUCKY COOKING BY HICKORY WOOD —
 HIGHWAY 66 EAST PHONE EM 4-4514

Tucker's
 Quality  Checkd
 DAIRY PRODUCTS

**Celebrate St. Pat's at
 RAMEY'S BAR**
 BEER BUD ON TAP
 East on Old 66

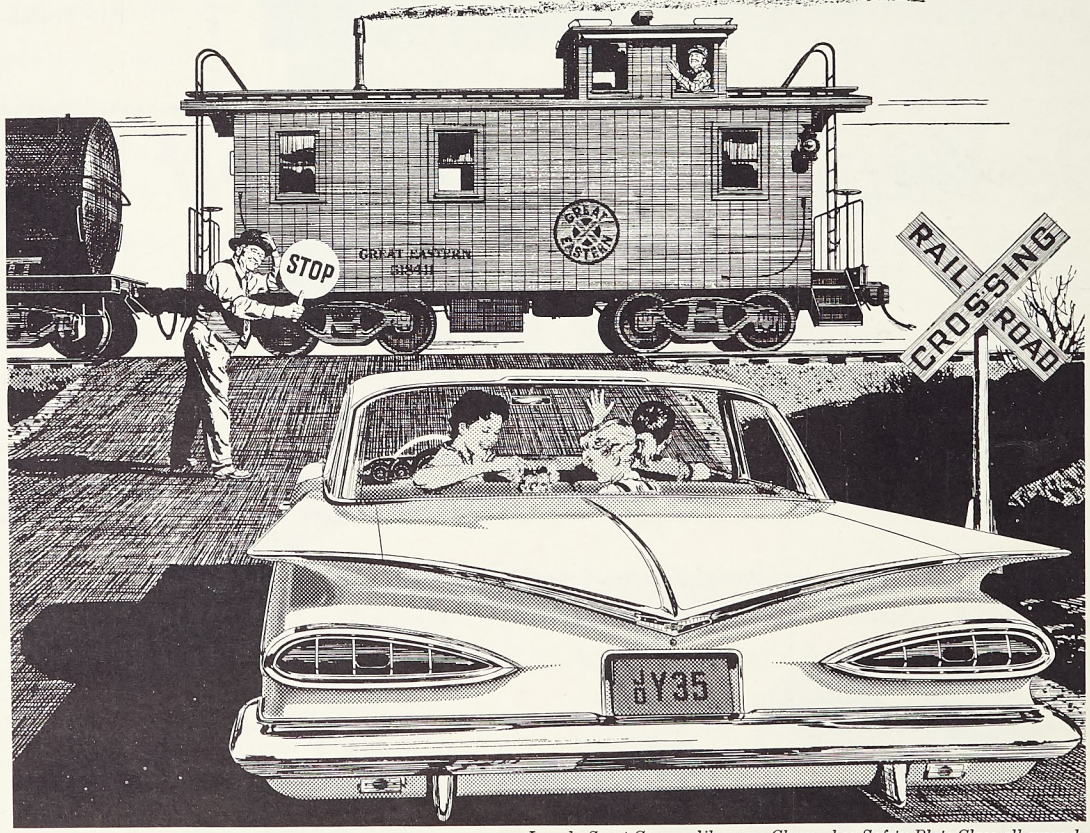
"It Pays to Look Well"
 CREW CUTS - FLAT TOPS - HOLLYWOODS
 At
SANITARY BARBER SHOP
 705 Pine St.

AUTOMATIC LAUNDRY
 FAST SERVICE—INDIVIDUAL WASHERS
 COMPLETE BACHELOR LAUNDRY SERVICE
 Freshman Friendship Coupons Redeemed
Laundry - Dry Cleaning - Shirts
 Corner 7th and Rolla Sts. Open 7:30 to 6

IT'S FUN TO ROLLER SKATE!



Skating Every Night
 Except Mondays
 at 7:30
 * * *
 Sunday Matinee
 at 1:30
 * * *
ROLLA ROLLER RINK
 City Hwy. 66 West



Impala Sport Coupe—like every Chevy—has Safety Plate Glass all around.

Chevy stops quickest... goes farthest on a gallon!

Chevy stops the best brakes of the leading low-priced three in a test of repeated stops at highway speeds conducted and certified by NASCAR*. Chevy also won over the other two in a NASCAR economy run—with the highest gas mileage for 6's and V8's at cruising speeds of just over 55 miles an hour.

Here's a car that knows how to get the most out of a gallon. And it's the only car in its field to bring you hydraulic valve lifters in all popular engines—6 and V8. This means smoother, quieter performance for you. There are many other advances just as fundamental as the efficiency of Chevrolet's engines and the depend-

ability of its new brakes (with more lining area than any other low-priced car). But why not stop by your dealer's and let Chevy do its own sweet talking!



*National Association for Stock Car Advancement and Research.

see your local authorized Chevrolet dealer for quick appraisal—early delivery!

FRIDAY, MARCH 13, 1959
 really should have given things to my dogs. They were the pole first."

St. Pat Knights Seniors

(Cont. from Page 1)

take it to Dublin, where the inscription on the stone might be deciphered.

On his way to Dublin the construction boss met other travelers, and when he spoke to them he found himself obsessed with the overwhelming desire to exaggerate as well as inaugurate strange stories that he was at a loss to attribute to himself, for he was an honest Irishman. It is said that those travelers to whom he talked were amazed at his abilities along those lines, and word of him spread throughout the whole of Ireland.

When the man reached Dublin with the stone a professor examined it, but was unable to translate the inscriptions. The professor was affected in the same way. Many men, including professional translators, examined the stone, and all were affected by the strange influence it held over those who touched it. The fame of the stone spread throughout the civilized world, and it was called the "Blarney Stone."

The stone disappeared, until the year 1909, when it was found, in all places, in the small town of Rolla, Missouri. A policeman named Paddy McFinnity, noticed the stone lying on the ground in front of the local pool hall, as he walked down Pine Street. He was

compelled to pick the stone up by some mysterious force, and immediately took it to the campus of M. S. M. in hopes that some professor might be able to translate the inscriptions on the face of the stone.

By some odd coincidence the day on which Paddy found the stone happened to be St. Pat's and this officer, under the influence of the stone handed it to St. Patrick, who was just finishing his speech in front of Norwood Hall. St. Pat experienced little trouble in translating the inscription. To his assembled followers he read aloud, "P. F. O'Flannigan, C. E., M. E., Consulting Engineer. St. Pat then kissed the Blarney Stone and again spoke to the crowd in a manner in which only St. Patrick could express himself. He commanded the seniors to come forward and kiss the stone as he had done and explained to them that it was a great honor to be allowed to do so. The seniors chose their most popular members for the ceremonies and the seniors chosen were then knighted into the order of St. Patrick and became true engineers and kissed the Blarney Stone. From 1909 to the present time all of the degrees that the school gives have been given to P. F. O'Flannigan and he is now one of the greatest engineers in the world.

St. Patrick Was Usually Equipped With a Large Staff

(Continued from Page 9)

evil ways Patrick was later to fight.

After six years a shepherd for Milchu, Patrick returned to Scotland. He believed that it was divine providence that had protected him while a slave, and he then decided to make a tour of the monasteries, intent on becoming a priest. Later he was sent to England to fight the pagan hordes.

In 433, Pope St. Celestine I commissioned him to work as a missionary among the Irish folk. He first planned to return to the castle of Milchu, and impart him with the blessings of the Children of God.

But old Milchu, having no desire to become a Christian, and thus subject himself to a former slave, piled all his furniture and treasures in the middle of his castle, ignited the pile and sat down in the middle of it, thus ending his troubles.

Our patron saint found it no easy matter to convert the Irish

people to Christianity, but he eventually succeeded in turning some of the powerful Irish kings to the Christian way, and from then on the people were easily led.

St. Patrick was usually equipped with a large staff, topped with a cross, and wearing a rough shirt

and sandals. His sleeping places were usually caves and rocks, his favorite being the mountain named after him. He spent the last years of his life in visiting the churches he had founded, and on March 17, 493, he left the world in death. He had reached the age of one hundred and six.

Stuffed Animals

Jewelry

Souvenirs

CAMPUS BOOK STORE

MARTERIE TO ENTERTAIN MINERS

(Continued from Page 1)

"Frige" received tremendous acuity all over the nation. His last two releases were "Tricky" and "Shish-Kebab," another internationally flavored hit.

From the field of single discs, Marterie has moved to the top of the ladder in well-known long-playing albums. A steady market has grown for him with such collections as "One Nite Stand," "Trumpeter's Lullaby," "Strictly Instrumental," "Dancing on the Own Beat," "Junior Prom," "Tranquil Moods," "Marterie Magic," "Dancer's Delight," and "Marterie Moods."

Marterie's record career began in 1949, shortly after ABC set him up as the leader of their feared network orchestra. Art Taldage, vice-president of Mercury records, heard some sides that Marterie had cut for fun with a radio crew. One listen and Taldage decided that Marterie was what they needed for a band to air on "long-playing records. The man was laid for a band designed to capture the nation's attention.

Marterie's band promptly did just this very soon after Mercury started recording the Marterie sound.

When the band took to the road, things were not so smooth and easy. There were months of "split weeks" and one-nighters during which Ralph often hearkened back to the comparative comfort and security of the radio studio. But in late 1952 and early 1953 the hours of toil put into integrating a new orchestra and building a book of arrangements paid off.

Since that time the popularity of Ralph Marterie has grown until it has reached that which it holds today. Last season Down Beat magazine picked it as the top unit in the country.

Mr. Cooke: "What is a slide rule?"

Jim: "Always slide with your old pants on."

Can anyone explain why the telephone so often rings at the precise moment when answering it is least convenient?

A GOOD TIME IS THE BEST TIME FOR

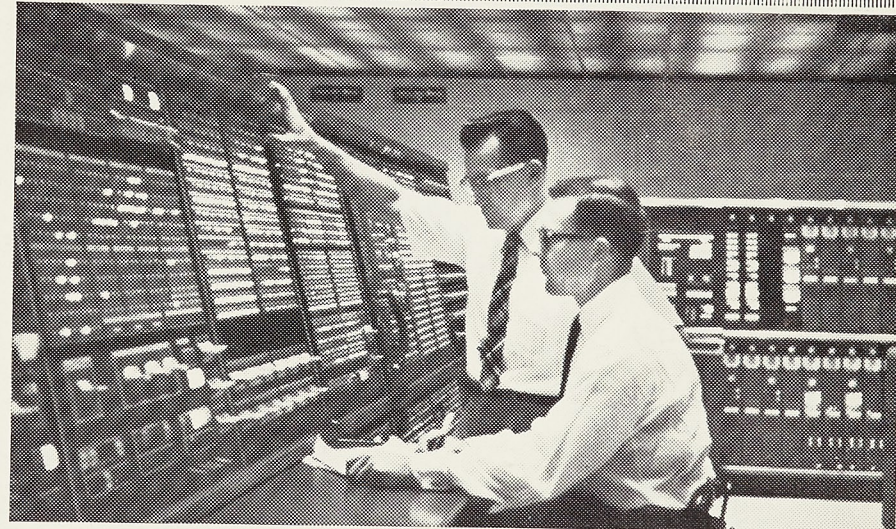


PARTY QUART

AMERICA'S PREMIUM QUALITY BEER

FALSTAFF BREWING CORPORATION, ST. LOUIS, MO.

MUELLER DISTRIBUTING CO. Rolla, Mo.



W. E. DEFENSE PROJECTS ENGINEERS are often faced with challenging assignments such as systems testing for the SAGE continental air defense network.

ENGINEERS explore exciting frontiers at Western Electric

If guided missiles, electronic switching systems and telephones of the future sound like exciting fields to you, a career at Western Electric may be just what you're after.

Western Electric handles both telephone work and defense assignments . . . and engineers are right in the thick of it. Defense projects include the Nike and Terrier guided missile systems . . . advanced air, sea and land radar . . . the SAGE continental air defense system . . . DEW Line and White Alice in the Arctic. These and other defense jobs offer wide-ranging opportunities for all kinds of engineers.

In our main job as manufacturing and supply unit of the Bell System, Western Electric engineers discover an even wider range of opportunity. Here they flourish in such new and growing fields as electronic switching, microwave radio relay, miniaturization. They engineer the installation of telephone central offices, plan the distribution of equipment and supplies . . . and enjoy, with their defense teammates, the rewards that spring from an engineering career with Western Electric.

Western Electric technical fields include mechanical, electrical, chemical, civil and industrial engineering, plus the physical sciences. For more detailed information pick up a copy of "Consider a Career at Western

Electric" from your Placement Officer. Or write College Relations, Room 200E, Western Electric Company, 195 Broadway, New York 7, N. Y. And sign up for a Western Electric interview when the Bell System Interviewing Team visits your campus.



TELEPHONES OF THE FUTURE—Making telephone products for the Bell System calls for first-rate technical know-how. Tomorrow's telephone system will demand even more imaginative engineering.

Western Electric

MANUFACTURING AND SUPPLY UNIT OF THE BELL SYSTEM

Principal manufacturing locations at Chicago, Ill.; Kearny, N. J.; Baltimore, Md.; Indianapolis, Ind.; Allentown and Laureldale, Pa.; Burlington, Greensboro and Winston-Salem, N. C.; Buffalo, N. Y.; North Andover, Mass.; Lincoln and Omaha, Neb.; Kansas City, Mo.; Columbus, Ohio; Oklahoma City, Okla.; Teletype Corporation, Chicago, Ill. and Little Rock, Ark. Also Western Electric Distribution Centers in 32 cities and installation headquarters in 16 cities. General headquarters: 195 Broadway, New York 7, N. Y.

St. Pat: Real Engineer

(Continued from Page 11)

people turned in time of trouble, so he was asked to investigate this phenomenon which was causing havoc all over the Emerald Isle. One group of radicals had even gone so far as to suggest prohibition. This idea was soon thrown out.

Pat set about arranging a laboratory for his use and soon was at work testing various brews of his own concoction. It was a long hard job, because although he managed to develop several tolerable liquors, none could be found that had the same full-bodied flavor of real Irish whiskey. A year passed before St. Pat was ready to announce the ultimate success of his experiment. A long year of hard work and many tests. Pat was an exacting man, and would allow no one but himself to make the trials of his products, and consequently he was on many a good binge during the time.

The new product was soon placed on the market so that the terrible affliction which had grip-

ped the Isle was released and once more the red nose became the mark of a good Irishman. Because of the sacrifice of our dear patron saint in performing all those personal tests it was decided that he should have some fitting reward. The nature of the beverage suggested that it be some suitable honor, and so Saint Patrick was made an honorary member of Theta Tau. This was the first of many such honors that were to follow, and established for all time that Patrick was an engineer.

The RAND Shoe

RANDY'S SHOE STORE

*Opposite Postoffice
Rolla, Mo.*

Welcome St. Pat

Owned and Operated by Miners Since 1910

FRANK B. POWELL LUMBER CO.

LIQUOR, WINES, COLD BEER, MAGAZINES, TOBACCO

GALE'S PACKAGE STORE

703 Pine

Parking Lot in Rear of Store for Customers

COMPLIMENTS—

ESQUIRE STUDIO

708 PINE STREET — ROLLA, MO.

EM 4-3413

"The Miner's Studio"

Del and Mary Jo Valle — Props.

A. B. C. BOWLING

12 FULLY AUTOMATIC BOWLING ALLEYS

OPEN 9:30 A. M. EVERY DAY

Convenient Snack Bar, Ho-Made Chili—Sandwiches
Midnite Snacks

Phone Orders Accepted

PHONE EM 4-2121

ALLEYS RESERVED FOR OPEN PLAY

4 on Monday Nites
Also After 9 p. m. Week Days

OPEN BOWLING FROM 9:30 A. M. ON EVERY DAY

HAMM'S BLATZ

TELEVISION

Hamms Blatz
Budweiser Stag
T. G. I. F. Schlitz

Busch Bavarian
Miller's High Life

"Where All the Miners Meet"

AIR CONDITIONED

EM 4-2030

OPEN 10 A. M.

They said it couldn't
be done...
They said nobody
could do it...
but —

**L&M is
Low
in tar**

**with
More
taste to it**

Don't settle for one without the other!



"L&M is kindest to your taste," says James Arness. "There are two good reasons why I know you'll like 'em. They're truly low in tar, with more exciting taste than you'll find in any other cigarette."

LOW TAR: L&M's patented filtering process adds extra filter fibers electrostatically, crosswise to the stream of smoke . . . makes L&M truly low in tar.

MORE TASTE: L&M's rich mixture of slow burning tobaccos brings you more exciting taste than any other cigarette.

LIVE MODERN CHANGE TO MODERN L&M

52
AIM
Loui
Dr. Norber
SM '52, now
Premium Divis
Chemical
Spring, Mo., he
leave the Rob
Medal o
'59. The awa
promise rat
ent in the fie
is given to
not reached
fore the end
ear during whi
ipient is mad
The award w
'86 by Arthur
enge, Mass.
son. It is pl
ouis Section o
ake the presen
to Dr. Neun
meeting in St. L
son of the ann
ential visit.
Employed as
sor by Mallin
ation, Dr. Nel
S. in Metall
EIT E
The Engineer
the State Board
or Architects
Engineers will h
for the enrollme
training on Sa
'59, 8:00 a. m.
the MSM Car
This examinat
e of special in
engineering grad
eering students
be this year or
rst step tow
fter an applica
amination and
ecessary for him
nal one-day ex
files for regis
ing the nece
engineering ex
The examinati
ence and math
plication. The
amination is br
e, is as follow
Mathematics,
y engineering
al circuits, sta
aterials, Kineti
draulics.
All persons int
e examination n
with the requ