

BRIEF REPORT

Effects of glucagon-like peptide-1 receptor agonists liraglutide and semaglutide on cardiovascular and renal outcomes across body mass index categories in type 2 diabetes: results of the LEADER and SUSTAIN 6 trials

Subodh Verma^{1*}, Darren K. McGuire^{2*}, Stephen C. Bain³, Deepak L. Bhatt⁴, Lawrence A. Leiter¹, C. David Mazer¹, Tea Monk Fries⁵, Richard E. Pratley⁶, Søren Rasmussen⁵, Hrvoje Vrazic^{5†}, Bernard Zinman⁷, John B. Buse⁸

¹Li Ka Shing Knowledge Institute, St. Michael's Hospital and University of Toronto, Toronto, ON, Canada;

²Division of Cardiology, University of Texas Southwestern Medical Center Dallas, TX, USA;

³Institute of Life Science, Swansea University, Swansea, UK;

⁴Brigham and Women's Hospital Heart and Vascular Center & Harvard Medical School, Boston, MA, USA;

⁵Novo Nordisk A/S, Søborg, Denmark;

⁶AdventHealth Translational Research Institute, Orlando, FL, USA;

⁷Lunenfeld–Tanenbaum Research Institute, Mt. Sinai Hospital, University of Toronto, ON, Toronto, Canada;

⁸University of North Carolina School of Medicine, Chapel Hill, NC, USA

Corresponding author: Subodh Verma, MD, PhD, FRCSC, Division of Cardiac Surgery, Li Ka Shing Knowledge Institute of St Michael's Hospital, University of Toronto, 30 Bond St,

Eighth Floor, Bond Wing, Toronto, ON M5B 1W8, Canada; + 1-416-864-5997
(vermasu@smh.ca).

*SV and DKM contributed equally to writing this manuscript

†Affiliation at time of manuscript development

Running title: Cardiorenal effects of liraglutide and semaglutide in T2D, by BMI

Main text word count: 2171/1800 permitted words

Abstract word count (limit ≤180): 227

Tables/Figures: 2/2 permitted figures or tables

References: 18/15 permitted references

Abstract

Associations between body mass index (BMI) and the cardiovascular (CV) and kidney efficacy of glucagon-like peptide-1 receptor agonists (GLP-1RAs) in patients with type 2 diabetes (T2D) are uncertain; therefore, data analyzed separately from the Liraglutide Effect and Action in Diabetes: Evaluation of Cardiovascular Outcome Results (LEADER) trial and the Trial to Evaluate Cardiovascular and Other Long-term Outcomes with Semaglutide in Subjects with Type 2 Diabetes (SUSTAIN 6) were examined. These international, randomized, placebo-controlled trials investigated liraglutide and semaglutide (both subcutaneous) in patients with T2D and at high risk of CV events. In *post hoc* analyses, patients were categorized by baseline BMI (<25 kg/m², ≥25–<30 kg/m², ≥30–<35 kg/m², ≥35 kg/m²), and CV and kidney outcomes with GLP-1RA versus placebo analyzed. All baseline BMI data from LEADER (n=9331) and SUSTAIN 6 (n=3290) were included (91% and 92% of patients with overweight or obesity, respectively). In SUSTAIN 6, nominally significant heterogeneity of semaglutide efficacy by baseline BMI was observed for CV death/myocardial infarction/stroke (major adverse CV events: MACE, primary outcome of both; $p_{\text{interaction}}=0.02$); otherwise, there was no statistical heterogeneity for either GLP-1RA versus placebo across BMI categories for key CV and kidney outcomes. The lack of statistical heterogeneity from these cardiorenal outcomes implies that liraglutide and semaglutide may be beneficial for many patients and is likely not to depend on their baseline BMI, but further study is needed.

Clinical Trial Registration: ClinicalTrials.gov, NCT01179048 and NCT01720446.

Keywords (3–5 words): body mass index, cardiovascular, liraglutide, MACE, semaglutide

Introduction

While some glucagon-like peptide 1 receptor agonists (GLP-1 RAs) have been shown to reduce major adverse cardiovascular (CV) events (MACE) in people with type 2 diabetes (T2D), they are also a recommended treatment when there is a compelling need for such patients to lose weight.^{1,2} Several factors have been linked to these reported CV benefits, but their precise roles are unknown.³ Such a factor is baseline BMI, whose impact has only been investigated on limited treatment outcomes with GLP-1 RAs.⁴ Although weight loss associated with GLP-1 RA use increases with increasing body mass index (BMI),⁴ it is unknown if other effects vary by BMI. We investigated if the CV and kidney outcomes with GLP-1 RAs are consistent across the spectrum of BMI, using data from the Liraglutide Effect and Action in Diabetes: Evaluation of Cardiovascular Outcome Results (LEADER⁵) trial and the Trial to Evaluate Cardiovascular and Other Long-term Outcomes with Semaglutide in Subjects with Type 2 Diabetes (SUSTAIN 6⁶) analyzed separately.

Materials and methods

Study design

The LEADER and SUSTAIN 6 trial designs have been published.^{5,6} In brief, both trials were double-blind and placebo-controlled. Patients with T2D and at high risk of CV events were randomly assigned to the GLP-1 RA or placebo (once-daily subcutaneous [s.c.] liraglutide 1.8 mg or maximum tolerated dose vs placebo in LEADER, 1:1 ratio; once weekly s.c. semaglutide 0.5 mg or 1.0 mg vs volume-matched placebo in SUSTAIN 6, 1:1:1:1 ratio [pooled as semaglutide vs placebo for analyses]), with all patients otherwise treated according to standard of care.^{5,6} Key inclusion criteria in both trials were age ≥ 50 years with established CV disease (previous coronary, cerebrovascular or peripheral vascular disease), heart failure (New York Heart Association class II or III), or chronic kidney disease stage ≥ 3 ; or age ≥ 60 years with at least one CV risk factor (microalbuminuria or proteinuria,

hypertension with left ventricular hypertrophy, left ventricular systolic or diastolic dysfunction, or an ankle–brachial index of <0.9).^{5,6} Major exclusion criteria included use of GLP-1 RAs, dipeptidyl peptidase-4 inhibitors, pramlintide or rapid-acting insulin, and recent history of an acute coronary or cerebrovascular event.^{5,6}

The primary composite outcome in both trials was first occurrence of MACE (CV death, nonfatal myocardial infarction or nonfatal stroke). The key secondary expanded outcome (expanded MACE) also included hospitalization for unstable angina or heart failure, or revascularization. The secondary composite renal outcome (termed nephropathy) was comprised of new-onset or persistent macroalbuminuria, persistent doubling of serum creatinine level and creatinine clearance <45 mL/min/1.73 m², the need for continuous renal-replacement therapy or death from kidney disease. Both trials were approved by institutional review boards or ethics committees for each centre; all patients provided written informed consent.^{5,6}

Weight and height were measured by investigators at baseline and BMI was calculated. BMI was also assessed at designated visits throughout both trials.^{5,6}

Statistical methods

Details of primary statistical analyses conducted in these trials have been described.^{5,6} For the present *post hoc* analyses, the effects of liraglutide and semaglutide on the time-to-first primary MACE, expanded MACE, CV death and nephropathy were evaluated by baseline BMI category, separately for the two trials. BMI was categorized based on cut-off values described by the World Health Organization as <25 kg/m², ≥ 25 to <30 kg/m², ≥ 30 to <35 kg/m² and ≥ 35 kg/m², defining overweight as BMI ≥ 25 kg/m² and obesity as BMI ≥ 30 kg/m².⁷ The significance of the differences between the baseline characteristics across these BMI categories was assessed using a Kruskal-Wallis test for continuous variables and a chi-

square test for categorical variables regardless of treatment group. The Cochran-Armitage trend test was used to analyze event rates across BMI groups in the placebo groups of both trials. The hazard ratios (HRs) and 95% confidence interval (CI) for treatment versus placebo were calculated using Cox proportional hazard regression models with treatment and BMI category as fixed factors and included a treatment-by-BMI term to test for quantitative interaction between both. The models were adjusted for baseline characteristics related to cardiorenal risk (sex, smoking status, anti-hyperglycaemic treatments, prior CV events, geographic region, age, diabetes duration, estimated glomerular filtration rate), with *p*-interaction <0.05 considered significant. No adjustments for multiple testing were performed.

Quadratic spline regression was applied using Cox proportional hazard regression to analyze treatment differences in time-to-first MACE by continuous baseline BMI. The percentage weight loss by BMI category was calculated over 3 years for LEADER and 104 weeks for SUSTAIN 6, including *p*-interaction for both. All analyses were performed using the software package SAS (version 9.4).

Results

The disposition and baseline characteristics of trial participants have been published.^{5,6} In LEADER, a total of 9340 patients were randomized (4668 to liraglutide; 4672 to placebo), with a median follow-up of 3.8 years.⁵ In SUSTAIN 6, 3297 patients were randomized (1648 to semaglutide; 1649 to placebo), with a median follow-up of 2.1 years.⁶

The proportion of patients in LEADER with a baseline BMI of <25 kg/m², ≥25 to <30 kg/m², ≥30 to <35 kg/m² and ≥35 kg/m² were 9%, 29%, 32%, and 30%, respectively, and in SUSTAIN 6 were 8%, 28%, 33% and 31%, respectively (**Table S1**). Baseline characteristics varied across the BMI categories within each trial (**Table S1**). Notably, in LEADER, the mean diabetes duration was longest in the BMI <25 kg/m² category versus the other BMI

categories, with a similar trend in SUSTAIN 6. As expected, a greater percentage of patients were treated with insulin at baseline with increasing baseline BMI in both trials (**Table S1**). The percentage of patients with established CV disease was similar across the BMI categories in LEADER ($p=0.30$; range: 80.3–82.2%; **Table S1**), while in SUSTAIN 6 it differed ($p=0.02$; range: 78.7–84.7%; **Table S1**). Within both trials, the mean estimated glomerular filtration rates were similar across the BMI categories ($p=0.27$ for LEADER; $p=0.14$ for SUSTAIN 6; **Table S1**).

The placebo event rates for MACE, expanded MACE and CV death were similar across BMI categories within each trial (**Table S2**). In SUSTAIN 6, risk for nephropathy declined with increasing BMI category ($p_{\text{trend}}=0.0002$), and although the nephropathy event rate declined in LEADER, it did not reach significance ($p_{\text{trend}}=0.18$) (**Table S2**).

When analyzing data from the treatment groups, only the interaction for MACE in SUSTAIN 6 demonstrated significance; for all others, there was no statistically significant heterogeneity of the treatment effects of liraglutide or semaglutide versus placebo across baseline BMI groups (**Figure 1**). Correspondingly, p -interaction values for treatment-by-BMI for MACE, expanded MACE and CV death in LEADER were 0.34, 0.22, and 0.79, respectively; and in SUSTAIN 6 were 0.02, 0.27, and 0.82, respectively.

For new-onset or worsening nephropathy, there was no heterogeneity of treatment efficacy across the BMI categories, with p -interaction values of 0.92 for LEADER and 0.21 for SUSTAIN 6 (**Figure 2**).

In the regression analysis of baseline BMI as a continuous parameter, liraglutide showed consistent benefits across BMI categories in analysis of time-to-first MACE, within the quartile boundaries, where 50% of the events occurred. Semaglutide also showed similar results across baseline BMI values for MACE (**Figure S1**).

There was no significant interaction between treatment and BMI category for percentage weight loss with either liraglutide (p -interaction=0.07; **Figure S2A**) or semaglutide (p -interaction=0.51; **Figure S2B**).

Discussion

The present results of *post hoc* analyses from LEADER and SUSTAIN 6 show that there was no heterogeneity in the CV and renal benefits of liraglutide and semaglutide versus placebo across the spectrum of baseline BMI evaluated either categorically or continuously, excepting a nominally significant interaction observed by baseline BMI category for the effect of semaglutide on MACE. These data should be considered by prescribers when choosing these agents for CV risk reduction in appropriate patients.

The exact nature of the relationship between any baseline characteristic, including BMI, and CV benefit of liraglutide and semaglutide (via glycaemic control and/or weight loss and/or other mechanisms) remains difficult to establish,^{3,8} with published meta-analysis results demonstrating that baseline BMI was not associated with achieved glycaemic control across seven different anti-hyperglycaemic treatments.⁹ Thus, the dose-response curves for any treatment may differ for MACE, glucose levels and weight, and our analyses have demonstrated that there appeared to be generally no effect of baseline BMI on MACE.

Also, prior data evaluating the associations of weight loss on CV outcomes are varied. The Look AHEAD trial randomized patients with overweight/obesity and T2D to intensive lifestyle (diet and exercise) intervention versus control.¹⁰ Despite significantly greater weight loss achieved in the intervention group, there was no significant difference in CV disease-related morbidity and mortality.¹⁰ Conversely, in the Albiglutide and cardiovascular outcomes in patients with type 2 diabetes and cardiovascular disease (Harmony Outcomes) trial that randomized patients with T2D at high CV risk to the GLP-1 RA albiglutide or placebo, a statistically significant 22% reduction in first occurrence of CV death, myocardial infarction or stroke (HR, 0.78 [95% CI 0.68;0.90]) was observed with albiglutide versus placebo. While

weight loss was marginally greater in the albiglutide group versus placebo at 8 and 16 months, the differences were less than 1 kg (−0.66 and −0.83 kg, respectively), and at 28 months, weight in both the placebo and albiglutide groups was similar to their baseline values.¹¹ Yet another type of association was evident in the Researching Cardiovascular Events with a Weekly Incretin in Diabetes (REWIND) trial, where treatment of patients with T2D with dulaglutide resulted in a significant decrease in CV events (HR, 0.88 [95% CI 0.79;0.99) and a significant decrease in body weight (−1.46 kg [95% CI 1.25; 1.67]) versus placebo.¹² Mediation analyses utilizing data from such trials may provide evidence as to how weight loss impacts CV risk, but to date, it appears that the size of any such mediation of body weight on CV outcomes may be small with liraglutide.¹³

The many mechanisms that have been proposed to underlie the cardioprotective effects of GLP-1 RAs are complex. They include anti-inflammatory effects, attenuation of cardiac ischaemic injury through a variety of direct and indirect actions on the myocardium and coronary arteries, modification of lipid synthesis and secretion, and improvement in endothelial dysfunction, among others.³ For example, in one study, liraglutide and semaglutide reduced plaque lesion development through altering inflammatory pathways in mouse models of atherosclerosis.¹⁴ These pathways could be involved in the significant improvements in the carotid intima-media thickness of patients who were treated with liraglutide for 8 months versus baseline.¹⁵ Such cardioprotective mechanisms of GLP-1 RAs appear to be independent of the lipid levels of patients.¹⁵

The renal protective effects of GLP-1 RAs have been less well studied than the cardioprotective effects and may be linked to renal tubular effects, oxidative stress and haemodynamic effects.¹⁶ For liraglutide and semaglutide, renal benefits were found in LEADER and SUSTAIN 6, where they were investigated as secondary, composite endpoints.^{5,6} Analysis of the nephropathy components revealed that the renal benefits were driven by new or persistent macroalbuminuria.^{6,17} Within our post hoc analyses, the renal benefit with semaglutide appeared to decrease with increasing BMI, but this effect

modification by BMI status was not statistically significant. However, in the placebo-treated population of SUSTAIN 6, it was evident that nephropathy decreased with increasing BMI, which may seem counterintuitive, but fits with some studies of patients with chronic kidney disease and end stage renal disease.¹⁸ The reason for the discrepancy between the LEADER and SUSTAIN 6 data in this particular regard remains unknown, but could be related to any of the baseline characteristics that varied by BMI category in SUSTAIN 6, but not in LEADER (e.g. established CV disease).

There were limitations to this study. These were *post hoc* analyses with numerous potential confounding factors (including not being powered to assess efficacy for CV and renal outcomes across baseline BMI strata and being of relatively short follow-up), and the analyses were not adjusted for differences in insulin, sodium-glucose cotransporter-2 inhibitor and CV medication use. Baseline BMI categories were not corrected for application to Asian patients, who comprised 9.6% of the study population, and the BMI categories were not protected by the trial randomization, resulting in heterogeneous subgroups. Only baseline BMI was analyzed, and results were more consistent with the larger, post-approval LEADER trial, compared with the smaller, pre-approval SUSTAIN 6 trial. With just one of the many interaction tests yielding a nominally significant *p*-value, the validity of this finding is uncertain and may be a spurious finding as these analyses were *post hoc* and did not include correction for multiplicity of testing. These analyses used data pertaining to liraglutide and semaglutide only; further analyses with datasets utilizing other GLP-1 RA data will help clinicians to understand if a class effect underpins these results. Although pooling data from the two trials may have increased the power of this analysis, due to the larger size of LEADER versus SUSTAIN 6, we chose to analyze the data separately, to provide a clear indication of what happened with each treatment.

Conclusion

These results from *post hoc* analyses of the LEADER and SUSTAIN 6 trials suggest that there are consistent CV and renal benefits of liraglutide and semaglutide across baseline

BMI categories in patients with T2D and high CV risk, but they need to be confirmed in future studies.

Author disclosure information

SV reports personal fees and other from Boehringer Ingelheim, Eli Lilly, AstraZeneca, Janssen, Merck, Novartis, Novo Nordisk, Sanofi, Valeant, Amgen, Sun Pharma and HLS Therapeutics.

DKM reports consultancy fees for clinical trial leadership from AstraZeneca, Sanofi Aventis, Janssen, Boehringer Ingelheim, Merck & Co, Pfizer, Lilly US, Novo Nordisk, Lexicon, Eisai, GlaxoSmithKline and Esperion; consultancy fees from AstraZeneca, Sanofi Aventis, Lilly US, Boehringer Ingelheim, Merck & Co, Novo Nordisk, Applied Therapeutics, Afimmune and Metavant.

SCB reports personal fees and other from Abbott, AstraZeneca, Boehringer Ingelheim, BMS, Cellnovo, Diartis, Eli Lilly, GlaxoSmithKline, Merck Sharp & Dohme, Novartis, Novo Nordisk, Pfizer, Roche, Sanofi-aventis, Schering-Plough, Servier and Takeda; other from Cardiff University, Doctors.net, Elsevier, Onmedica, Omnia-Med, Medscape, All-Wales Medicines Strategy Group, National Institute for Health and Care Excellence (NICE) UK and Glycosmedia.

DLB discloses the following relationships - Advisory Board: Cardax, Cereno Scientific, Elsevier Practice Update Cardiology, Level Ex, Medscape Cardiology, PhaseBio, PLx Pharma, Regado Biosciences; Board of Directors: Boston VA Research Institute, Society of Cardiovascular Patient Care, TobeSoft; Chair: American Heart Association Quality Oversight Committee; Data Monitoring Committees: Baim Institute for Clinical Research (formerly Harvard Clinical Research Institute, for the PORTICO trial, funded by St. Jude Medical, now

Abbott), Cleveland Clinic (including for the ExCEED trial, funded by Edwards), Duke Clinical Research Institute, Mayo Clinic, Mount Sinai School of Medicine (for the ENVISAGE trial, funded by Daiichi Sankyo), Population Health Research Institute; Honoraria: American College of Cardiology (Senior Associate Editor, Clinical Trials and News, ACC.org; Vice-Chair, ACC Accreditation Committee), Baim Institute for Clinical Research (formerly Harvard Clinical Research Institute; RE-DUAL PCI clinical trial steering committee funded by Boehringer Ingelheim; AEGIS-II executive committee funded by CSL Behring), Belvoir Publications (Editor in Chief, Harvard Heart Letter), Duke Clinical Research Institute (clinical trial steering committees, including for the PRONOUNCE trial, funded by Ferring Pharmaceuticals), HMP Global (Editor in Chief, Journal of Invasive Cardiology), Journal of the American College of Cardiology (Guest Editor; Associate Editor), Medtelligence/ReachMD (CME steering committees), Level Ex, MJH Life Sciences, Population Health Research Institute (for the COMPASS operations committee, publications committee, steering committee, and USA national co-leader, funded by Bayer), Slack Publications (Chief Medical Editor, Cardiology Today's Intervention), Society of Cardiovascular Patient Care (Secretary/Treasurer), WebMD (CME steering committees); Other: Clinical Cardiology (Deputy Editor), NCDR-ACTION Registry Steering Committee (Chair), VA CART Research and Publications Committee (Chair); Research Funding: Abbott, Afimmune, Amarin, Amgen, AstraZeneca, Bayer, Boehringer Ingelheim, Bristol-Myers Squibb, Cardax, Chiesi, CSL Behring, Eisai, Ethicon, Ferring Pharmaceuticals, Forest Laboratories, Fractyl, Idorsia, Ironwood, Ischemix, Lexicon, Lilly, Medtronic, Pfizer, PhaseBio, PLx Pharma, Regeneron, Roche, Sanofi Aventis, Synaptic, The Medicines Company; Royalties: Elsevier (Editor, Cardiovascular Intervention: A Companion to Braunwald's Heart Disease); Site Co-Investigator: Biotronik, Boston Scientific, CSI, St. Jude Medical (now Abbott), Svelte; Trustee: American College of Cardiology; Unfunded Research: FlowCo, Merck, Novo Nordisk, Takeda.

CDM reports research grants to institution and/or consulting honoraria from Amgen, Boehringer Ingelheim, CSL Behring, OctaPharma and Quark Pharmaceuticals.

TMF and SR are employees of and shareholders in Novo Nordisk. HV was an employee of Novo Nordisk during the development of this manuscript.

REP reports research grants from Gilead Sciences, Lexicon Pharmaceuticals, Ligand Pharmaceuticals Inc., Lilly, Merck, Novo Nordisk, Sanofi-Aventis US LLC and Takeda; speaker for AstraZeneca, Novo Nordisk and Takeda; consultant for AstraZeneca, Boehringer Ingelheim, Eisai, Inc., GlaxoSmithKline, Janssen Scientific Affairs LLC, Ligand Pharmaceuticals Inc., Lilly, Merck, Novo Nordisk, Pfizer and Takeda. All payments made directly to his employer (Florida Hospital/AdventHealth).

BZ reports personal fees from Merck, Sanofi-Aventis, Eli Lilly, AstraZeneca and Janssen; personal fees and other from Novo Nordisk and Boehringer Ingelheim.

JBB's contracted consulting fees are paid to the University of North Carolina by Adocia, AstraZeneca, Dance Biopharm, Dexcom, Eli Lilly, Fractyl, GI Dynamics, Intarcia Therapeutics, Lexicon, MannKind, Metavention, NovaTarg, Novo Nordisk, Orexigen, PhaseBio, Sanofi, Senseonics, vTv Therapeutics and Zafgen; he reports grant support from AstraZeneca, Eli Lilly, Intarcia Therapeutics, Johnson & Johnson, Lexicon, Medtronic, Novo Nordisk, Sanofi, Theracos, Tolerion and vTv Therapeutics; he is a consultant to Cirius Therapeutics Inc, CSL Behring, Mellitus Health, Neurimmune AG, Pendulum Therapeutics and Stability Health; he holds stock/options in Mellitus Health, Pendulum Therapeutics, PhaseBio and Stability Health; and he is supported by grants from the National Institutes of Health (UL1TR002489, U01DK098246, UC4DK108612, U54DK118612), PCORI and ADA.

Acknowledgements

The LEADER and SUSTAIN 6 trials were sponsored by Novo Nordisk and are registered with ClinicalTrials.gov (NCT01179048 and NCT01720446).

The authors thank Emre Yildirim (Novo Nordisk) for reviewing this manuscript. Editorial and submission support were provided by Gillian Groeger, PhD, and Izabel James, MBBS, of Watermeadow Medical, an Ashfield company, part of UDG Healthcare plc, funded by Novo Nordisk. All authors had access to final study results. Subodh Verma wrote the first draft of the paper, which was edited significantly by Darren K. McGuire and subsequently reviewed and approved by all authors, who also assumes responsibility for its content.

Author contributions

Design: (of the *post hoc* analysis, not the trial): all authors: Subodh Verma, Darren K.

McGuire, Stephen C. Bain, Deepak L. Bhatt, Lawrence A. Leiter, C. David Mazer, Tea Monk Fries, Richard E. Pratley, Søren Rasmussen, Hrvoje Vrazic, Bernard Zinman, John B. Buse

Conduct/data collection (all investigators on LEADER or SUSTAIN 6): Lawrence A. Leiter, Stephen C. Bain, John B. Buse, Richard E. Pratley, Bernard Zinman

Analysis: Søren Rasmussen

Writing manuscript: Subodh Verma and Darren McGuire

Data sharing statement

Data supporting these analyses are available from the corresponding author on reasonable request.

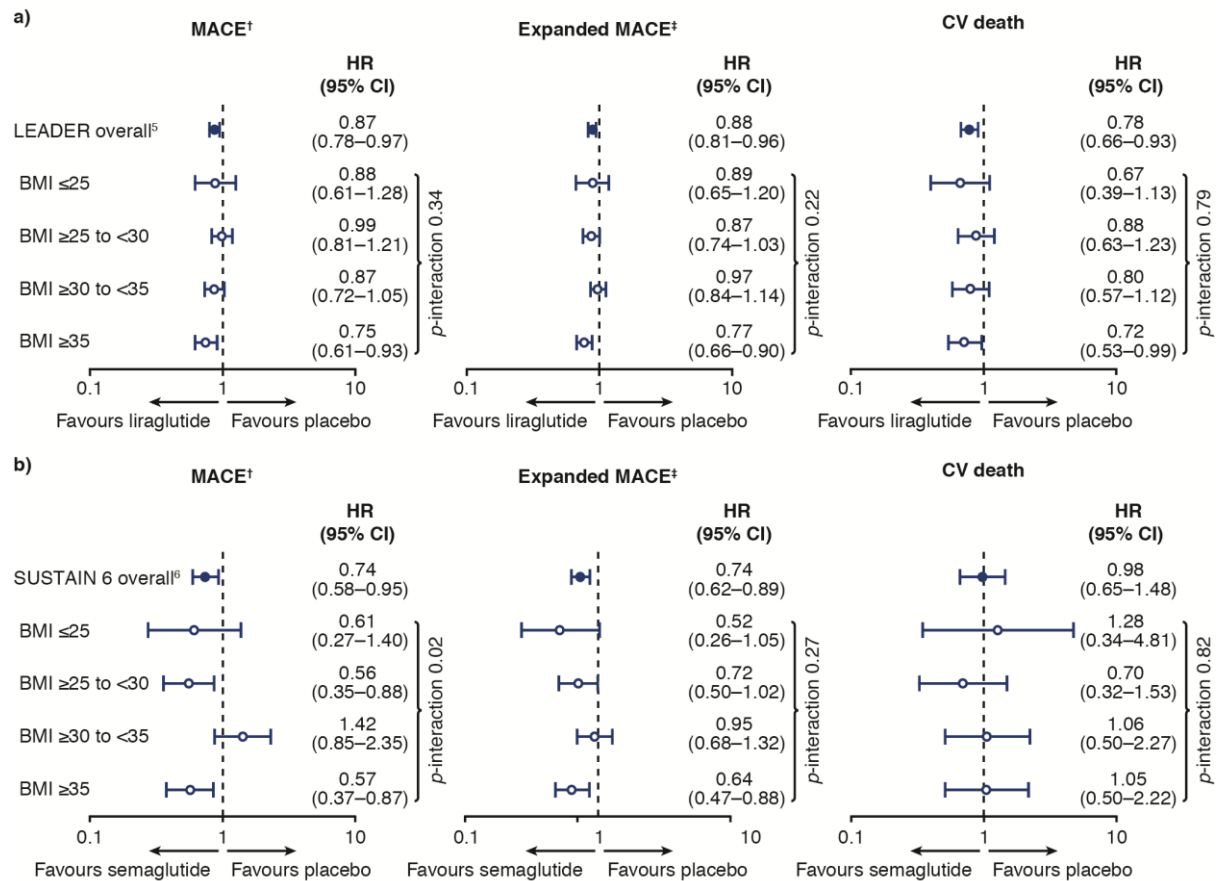
References

1. American Diabetes Association. 9. Pharmacologic Approaches to Glycemic Treatment: Standards of Medical Care in Diabetes-2020. *Diabetes Care*. 2020;43:S98-s110.
2. American Diabetes Association. 10. Cardiovascular Disease and Risk Management: Standards of Medical Care in Diabetes-2020. *Diabetes Care*. 2020;43:S111-s134.
3. Sharma A, Verma S. Mechanisms by Which Glucagon-Like-Peptide-1 Receptor Agonists and Sodium-Glucose Cotransporter-2 Inhibitors Reduce Cardiovascular Risk in Adults With Type 2 Diabetes Mellitus. *Can J Diabetes*. 2020;44:93-102.
4. Chitnis AS, Ganz ML, Benjamin N, Langer J, Hammer M. Clinical effectiveness of liraglutide across body mass index in patients with type 2 diabetes in the United States: a retrospective cohort study. *Adv Ther*. 2014;31:986-999.
5. Marso SP, Daniels GH, Brown-Frandsen K, et al. Liraglutide and Cardiovascular Outcomes in Type 2 Diabetes. *N Engl J Med*. 2016;375:311-322.
6. Marso SP, Bain SC, Consoli A, et al. Semaglutide and Cardiovascular Outcomes in Patients with Type 2 Diabetes. *N Engl J Med*. 2016;375:1834-1844.
7. World Health Organization. Obesity: preventing and managing the global epidemic. *WHO Technical Report Series 894*. 2000.
8. Vansteelandt S, Linder M, Vandenberghe S, Steen J, Madsen J. Mediation analysis of time-to-event endpoints accounting for repeatedly measured mediators subject to time-varying confounding. *Statistics in Medicine*. 2019;38:4828-4840.
9. Cai X, Yang W, Gao X, Zhou L, Han X, Ji L. Baseline Body Mass Index and the Efficacy of Hypoglycemic Treatment in Type 2 Diabetes: A Meta-Analysis. *PLoS One*. 2016;11:e0166625.
10. Dutton GR, Lewis CE. The Look AHEAD Trial: Implications for Lifestyle Intervention in Type 2 Diabetes Mellitus. *Prog Cardiovasc Dis*. 2015;58:69-75.
11. Hernandez AF, Green JB, Janmohamed S, et al. Albiglutide and cardiovascular outcomes in patients with type 2 diabetes and cardiovascular disease (Harmony Outcomes): a double-blind, randomised placebo-controlled trial. *The Lancet*. 2018;392:1519-1529.
12. Gerstein HC, Colhoun HM, Dagenais GR, et al. Dulaglutide and cardiovascular outcomes in type 2 diabetes (REWIND): a double-blind, randomised placebo-controlled trial. *Lancet*. 2019;394:121-130.
13. Buse JB, Bain SC, Mann JFE, et al. Cardiovascular Risk Reduction With Liraglutide: An Exploratory Mediation Analysis of the LEADER Trial. *Diabetes Care*. 2020.
14. Rakipovski G, Rolin B, Nohr J, et al. The GLP-1 Analogs Liraglutide and Semaglutide Reduce Atherosclerosis in ApoE(-/-) and LDLr(-/-) Mice by a Mechanism That Includes Inflammatory Pathways. *JACC Basic Transl Sci*. 2018;3:844-857.
15. Rizzo M, Chandalia M, Patti AM, et al. Liraglutide decreases carotid intima-media thickness in patients with type 2 diabetes: 8-month prospective pilot study. *Cardiovasc Diabetol*. 2014;13:49.
16. Yin WL, Bain SC, Min T. The Effect of Glucagon-Like Peptide-1 Receptor Agonists on Renal Outcomes in Type 2 Diabetes. *Diabetes Ther*. 2020;11:835-844.
17. Mann JFE, Ørsted DD, Brown-Frandsen K, et al. Liraglutide and Renal Outcomes in Type 2 Diabetes. *N Engl J Med*. 2017;377:839-848.
18. Naderi N, Kleine CE, Park C, et al. Obesity Paradox in Advanced Kidney Disease: From Bedside to the Bench. *Prog Cardiovasc Dis*. 2018;61:168-181.

Figure legends

Figure 1. Cardiovascular outcomes by baseline body mass index category in

a) LEADER and b) SUSTAIN 6

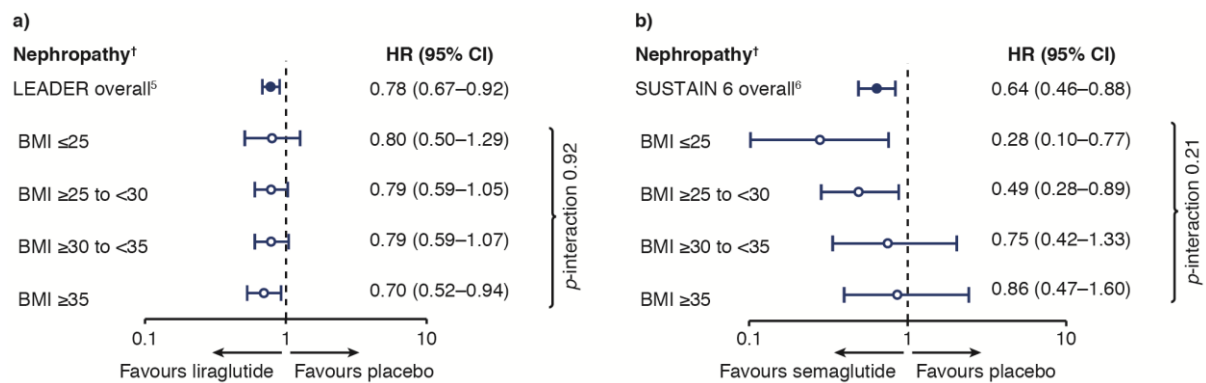


Primary and expanded MACE analyses adjusted for sex, smoking status, antihyperglycaemic treatments, prior CV events, geographic region, age, diabetes duration, estimated glomerular filtration rate. Smoking status was not adjusted for in the SUSTAIN 6 analysis for CV death, due to low event numbers.

†Primary MACE: composite of CV death, nonfatal MI and nonfatal stroke ‡Expanded MACE: components of primary MACE plus revascularization (coronary only in LEADER; coronary or peripheral in SUSTAIN 6) or hospitalization for unstable angina pectoris or heart failure.

BMI, body mass index (in kg/m²); CI, confidence interval; CV, cardiovascular; HR, hazard ratio; MACE, major adverse cardiovascular events; MI, myocardial infarction.

Figure 2: Renal outcomes by baseline body mass index category in a) LEADER and b) SUSTAIN 6



LEADER analysis adjusted for sex, smoking status, antihyperglycaemic treatments, prior cardiovascular events, geographic region, age, diabetes duration, estimated glomerular filtration rate. SUSTAIN 6 analysis adjusted for sex, antihyperglycaemic treatments, prior cardiovascular events, geographic region, age, diabetes duration, estimated glomerular filtration rate (smoking status was omitted due to low event numbers).

†Nephropathy: new or persistent macroalbuminuria, doubling of serum creatinine, creatinine clearance < 45 mL/min/1.73 m², end-stage kidney disease or death from kidney disease. BMI, body mass index (in kg/m²); CI, confidence interval; HR, hazard ratio.