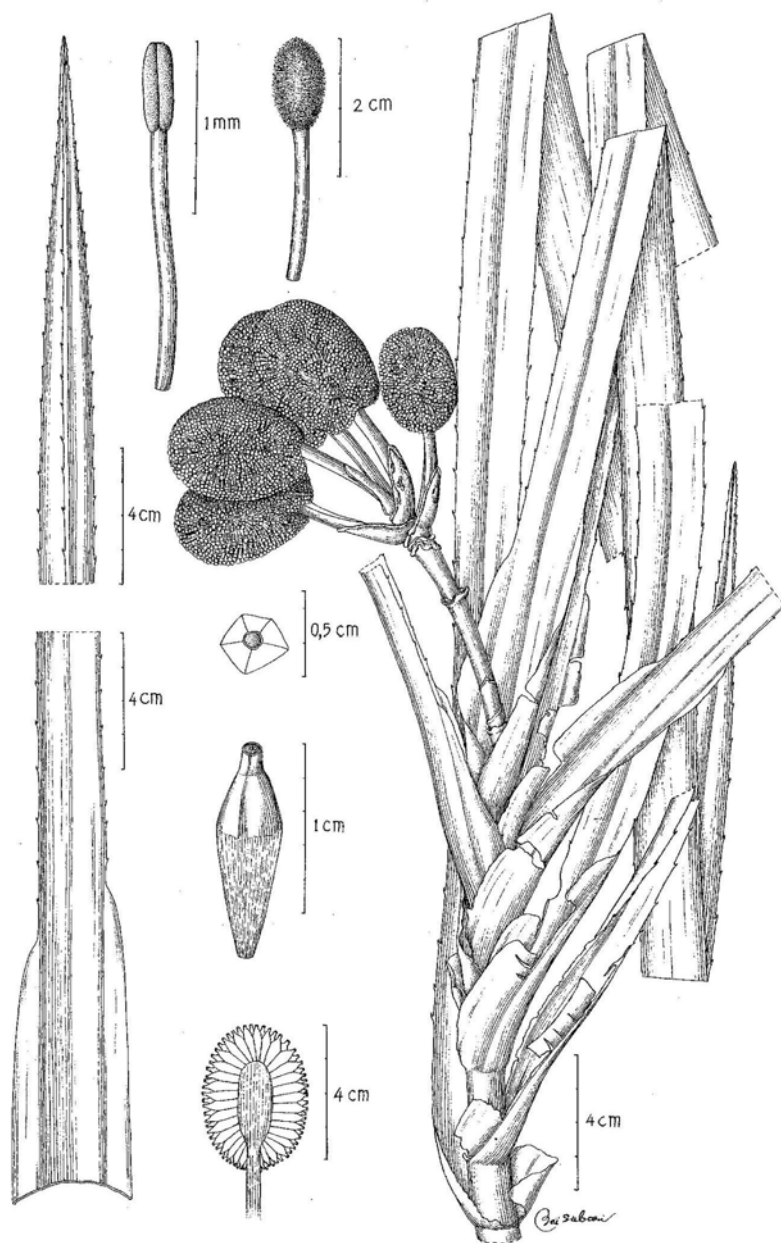




# A JOURNAL ON TAXONOMIC BOTANY, PLANT SOCIOLOGY AND ECOLOGY

ISSN 0034 – 365 X



# REINWARDTIA

13 (2)

# REINWARDTIA

*A JOURNAL ON TAXONOMIC BOTANY  
PLANT SOCIOLOGY AND ECOLOGY*

Vol. 13(2): 95 — 220, November 2, 2010

## **Chief Editor**

KARTINI KRAMADIBRATA

## **Editors**

DEDY DARNAEDI

TUKIRIN PARTOMIHARDJO

JOENI SETIJO RAHAJOE

TEGUH TRIONO

MARLINA ARDIYANI

EIZI SUZUKI

JUN WEN

## **Managing editors**

ELIZABETH A. WIDJAJA

HIMMAH RUSTIAMI

## **Secretary**

ENDANG TRI UTAMI

## **Lay out**

DEDEN SUMIRAT HIDAYAT

## **Illustrators**

SUBARI

WAHYU SANTOSO

ANNE KUSUMAWATY

## **Reviewers**

R. ABDULHADI, SANDY ATKINS, JULIE F. BARCELONA, TODD J. BARKMAN, NICO CELLINESE, MARK COODE, GUDRUN KADEREIT, ROGIER DE KOCK, N. FUKUOKA, KUSWATA KARTAWINATA, ARY P. KEIM, P. J. A. KESSLER, A. LATIFF-MOHAMAD, M. A. RIFAI, RUGAYAH, H. SOEDJITO, T. SETYAWATI, D. G. STONE, WAYNE TAKEUCHI, BENITO C. TAN, J. F. VELDKAMP, P. VAN WELZEN, H. WIRIADINATA, RUI-LIANG ZHU.

Correspondence on editorial matters and subscriptions for Reinwardtia should be addressed to:

HERBARIUM BOGORIENSE, BOTANY DIVISION,

RESEARCH CENTER FOR BIOLOGY- LIPI,

CIBINONG 16911, INDONESIA

Email: reinwardtia@mail.lipi.go.id

## A NEW SPECIES OF RAFFLESIA (RAFFLESiaceae) FROM NORTH SUMATRA

Received November 3, 2009; accepted February 2, 2010

### HARRY WIRIADINATA

*Herbarium Bogoriense, Botany Division, Research Center for Biology–LIPI, Jl. Raya Jakarta–Bogor Km 46, Cibinong 16911, Indonesia. E–mail: harry\_wiria@yahoo.com*

### RISMITA SARI

*Center for Plant Conservation, Bogor Botanic Gardens–LIPI, Jl. Ir. H. Juanda 3, Bogor 16122, Indonesia. E–mail: rismita@yahoo.com*

### ABSTRACT

WIRIADINATA, H. & SARI, R. 2010. A new species of *Rafflesia* (*Rafflesiaceae*) from North Sumatra. *Reinwardtia* 13(2): 95–100. — *Rafflesia meijeri* Wiriadinata & Sari *spec. nov.* from North Sumatra is described. It appears closely related to *R. rochussenii* Teijsm. & Binn. from West Java which has no processes on the disk, smaller flower, the lobes with a different wart pattern, a wider groove with thin lamellae on the central column, ramenta filiform without swollen apex.

**Key words:** *Rafflesia meijeri*, *Rafflesiaceae*, North Sumatra, taxonomy.

### ABSTRAK

WIRIADINATA, H. & SARI, R. 2010. Satu jenis baru *Rafflesia* (*Rafflesiaceae*) dari Sumatera Utara. *Reinwardtia* 13 (2): 95–100. — *Rafflesia meijeri* Wiriadinata & Sari berasal dari Sumatera Utara dipertelakan untuk pertama kalinya. Jenis tersebut berbeda dengan *R. rochussenii* Teijsm. & Binn. dari Jawa Barat yang tidak mempunyai *processes* pada bagian atas cawan, mempunyai corak berbeda pada permukaan cuping, alur yang lebar dengan dinding tipis pada bagian atas *central column* dan ramenta yang berupa rambut sederhana tanpa benjolan pada ujungnya serta ukuran bunga lebih kecil.

**Kata kunci:** *Rafflesia meijeri*, *Rafflesiaceae*, Sumatera Utara, taksonomi.

### INTRODUCTION

During an expedition to the north of the Taman Wisata Alam (TWA= Recreation Nature Forest) Sicikeh–cikeh, North Sumatra, in early 2003, it was a surprise that a new species of *Rafflesia* R. Br. (*Rafflesiaceae*) encountered. This species is similar to *R. rochussenii* Teijsm. & Binn. of West Java (Fig.1), which also has no processes on the disc. The genus *Rafflesia* in the world has at least 27 known species (Mat–Salleh *et al.*, 2010.) This super–parasitic plant with its gigantic flower has long been a source of fascination to botanists and laymen. These species are very rare in nature and of great local and international interest and a major tourist’s attraction (Mat–Salleh & Latiff, 1989). They are threatened by the destruction of their habitat through logging and clearing for *e.g.* oil palm plantations. Unfortunately, attempts to grow the plants in Botanic Gardens have met with very limited success (Veldkamp, 2007). Recently, however, the Bogor Botanic Garden has successfully cultivated *R. patma* Blume of West Java. Several species

of narrowly endemic have also provided botanists with insights into the evolution and biogeography of tropical biodiversity (See *e.g.* Barkman *et al.*, 2008; Davis *et al.*, 2007; Barcelona *et al.*, 2009a; 2009b).

The taxonomy of the genus *Rafflesia* is also very unique because the species delimitation is based only on details of the flower morphology, since the vegetative part consist of mycelium–like structure living inside the root or bole of the specific host of particularly species of family *Vitaceae*, especially *Tetrastigma coriaceum* (DC.) Gagnep. which usually has been misidentified as *T. leucostaphylum* (Dennst.) N.P. Balakr. (Veldkamp, 2009). In his revision of Malesian *Rafflesiaceae*, Meijer (1998) recorded 14 taxa of which seven occur in Indonesia, the rest are distributed in S. Thailand, the Malay Peninsula, N. Borneo (Brunei, Sabah, Sarawak) and The Philippines. Furthermore he united *R. titan* Jack and *R. atjehensis* Koord. to *R. arnoldi* R. Br. thus leaving the Sumatran species he recognized to five species namely *R. arnoldi*, *R. arnoldi* var. *atjehensis* (Koord.) Meijer, and *R. microphylla* Meijer which is distributed in Aceh, R.



Fig. 1. *Rafflesia rochussenii* (Photo: Anonim–Lawalata IPB)

*arnoldi* and *R. gadutensis* Meijer in West Sumatra, and *R. hasseltii* Suringar in Riau and Jambi. *Rafflesia arnoldi* was considered as widely distributed and to be quite variable in morphology between individual and in populations. Recently a new species *Rafflesia bengkuluensis* was published by Susatya, Arianto and Mat–Salleh (Susatya *et al.*, 2005), and *R. lawangensis* Mat–Salleh *et al.* (2010) which indicated that undescribed, “new” species may still be out there.

Almost all species have processes on the disc except *R. rochussenii* which occurs on Mt. Salak and Mts. Gede–Pangrango, West Java (Backer & Bakhuizen van den Brink Jr., 1964; Anonim, 1990; Wiriadinata & Alam, 1990; Wiriadinata, 1993; Zuhud *et al.*, 1998; Meijer, 1998). *Rafflesia rochussenii* var. *subaculeata* has 1–8 processes and Jafarsidik & Meijer (1985, “1983”) have suggested that this might be a hybrid between *R. patma* and *R. rochussenii*.

In the Recreation Natural Forest (TWA) Sicikeh–cikeh, North Sumatra, a small population of *Rafflesia* occurs which has no processes and after a long study we decided that it represents a new species.

***Rafflesia meijeri* Wiriadinata & Sari, spec. nov.**  
Figs. 2–6.

*Rafflesia rochussenii* similis disco sine processibus, floribus minoribus 13–14 cm diam., ramentis filiformibus apice non inflatis differt. — Type: Indonesia, North Sumatra, TWA Sicikeh–cikeh, Dairi, N:



Fig. 2. *Rafflesia meijeri* Wiriadinata & Sari (Photo: Rismita Sari)

02° 39′ 826″; E: 98° 23′ 385″, 1320 m asl. 16 Sep. 2003, male fl., Rismita Sari RI 413 (BO–holotype).

*Mature bud* ca. 9–10 cm in diam. *Male flower* ca. 13–14 cm across, ca. 5–6 cm high. *Perigone lobes* 5–6 x 3.7–4.5 cm, on the upper side coarsely reddish brick–coloured, lower side smooth. *Perigone tube* ca. 4.5–5 cm high, ca. 9–10 cm wide. *Diaphragm* ca. 8.5 cm diam., slightly 5–angular, 2.5 cm wide, reddish, ovate–oblong, with whitish orange warts, opening of diaphragm ca. 4.5 cm, wider than in *R. rochussenii*. *Ramenta* filiform, simple, without a swollen apex, dark red white coloured at the tip, 0.5–2.5 mm up to ca. 8 mm long near base of the perigone tube. *Disk* ca. 6–6.5 cm diam., rim raised, without processes. *Anthers* 20. Annulus exterior a curved rim, short, ca. 3 mm. *Column* ca. 1.5 cm high, ca. 3 cm in diam. at the neck, groove very wide, lamellae with very thin walls.

**Distribution.** Sumatra: endemic to North Sumatra, only known from a male population at the type locality Recreation Nature Forest (TWA) Sicikeh–cikeh, North Sumatra, about 1.5 km from Laehole village.

**Habitat.** Secondary hilly forest with moderately steep slopes at 1320 m asl. *Rafflesia meijeri* was found in disturbed hilly primary forest associated with *Fagaceae*, *Lauraceae*, *Leguminosae*, *Rubiaceae*, *Zingiberaceae*, etc. Flowering: September at the beginning of the rainy season.

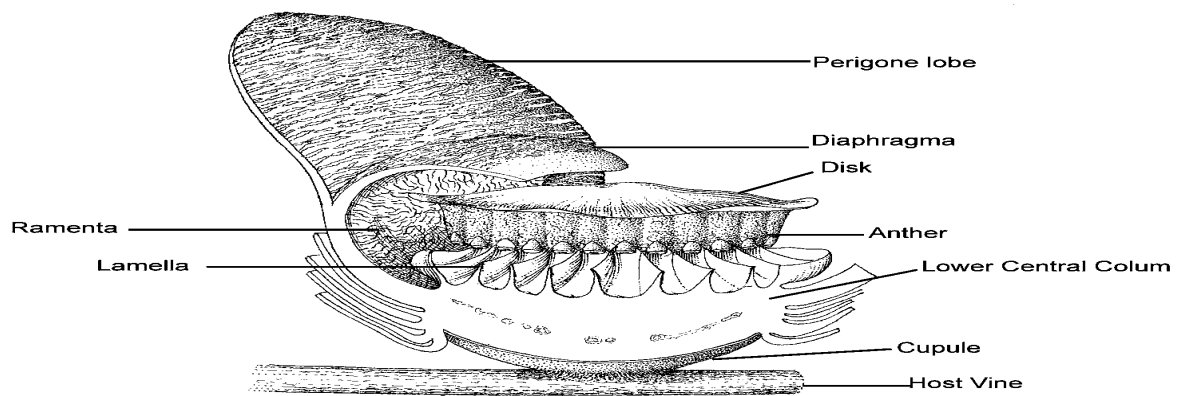


Fig. 3. Cross section of *Rafflesia meijeri*. After Rismita Sari RI 413 (drawn by Subari)

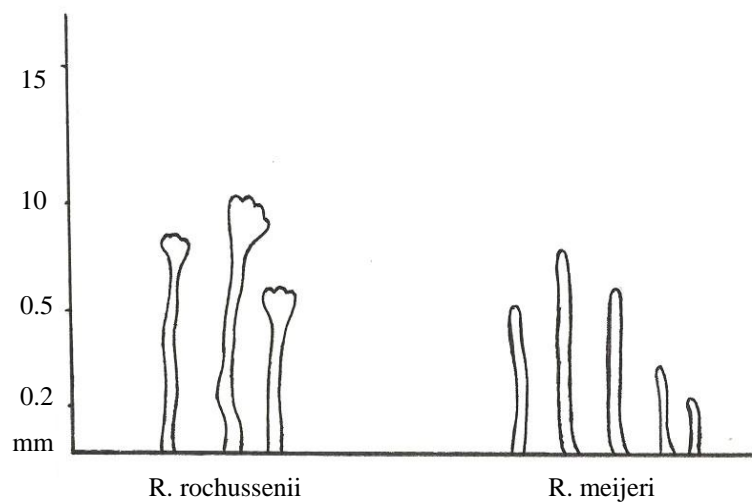


Fig. 4. Comparison of ramenta of *Rafflesia rochussenii* and *R. meijeri* (drawn by Subari)



Fig. 5. *R. meijeri* showing simple filiform ramenta (Photo: Harry Wiriadinata)



Fig. 6. *R. meijeri* showing close up simple ramenta (Photo: Harry Wiriadinata)

**Notes.** It is similar to *Rafflesia rochussenii* which also has no processes on its disk (Meijer, 1998) and occurs on the slopes of Mts. Gede Pangrango National Park and of Mt. Salak, West Java (Anonim, 1990). However, the new species can be easily distinguished by the smaller size of the flower, the pattern of the warts on the diaphragm and perianth lobes, the angular opening of the diaphragm, and

the simple filiform ramenta.

**Etimology.** Named after Prof. Dr. Willem Meijer (1923–2003), in acknowledgement of his contribution toward the study and conservation of *Rafflesia*.

**Specimen examined.** SUMATRA. Taman Wisata Alam (TWA) Sicikeh–cikeh, Laehole village, Pansur Nauli,

Table 1. Comparison of *Rafflesia meijeri* and *R. rochussenii*

| Character            | <i>Rafflesia meijeri</i> | <i>Rafflesia rochussenii</i> |
|----------------------|--------------------------|------------------------------|
| Flowers diameter     | 9–10 cm                  | 18–20 cm                     |
| Flowers height       | ca. 5–6 cm               | ca. 10 cm                    |
| Perigone lobes       | 5–6 cm x 3.7–4.5 cm      | ca. 7.7 cm x 8.2 cm          |
| Perigone tube        | ca. 4.5–5 cm             | ca. 6.5 cm                   |
| Diaphragm            | 5–angular                | rounded                      |
| Warts                | irregular                | regular                      |
| Opening of diaphragm | ca. 4.5 cm               | 5.7–6.7 cm                   |
| Disk diameter        | ca. 6–6.5 cm             | ca. 9 cm                     |
| Processes            | none                     | none (1–8)                   |
| Rim of processes     | slightly raised          | flat                         |
| Column               | 1.5 cm                   | 2 cm                         |
| Ramenta inside base  | 0.5–8 mm                 | 10 mm                        |
| Tip of ramenta       | not swollen              | swollen                      |
| Anthers              | 20                       | 22 (15–20)                   |

Parbuluan, Daeri, North Sumatra, hilly primary forest, 1320 m asl., male flower, 16 Sep. 2003, *Rismita Sari RI 413* (BO).

#### ACKNOWLEDGEMENTS

The second author would like to thank Dr. Dedy Dar-naedi, Sutrisno, Sri Hartini, Dachrijani Mardi and Awen Supranata. Special thanks to the team of the Bogor Botanic Gardens who attended the expedition to the Sicikeh–cikeh TWA: Abednego Purba, Bonar Malau, Endang Suparta, Madhari, Nelson I. Hutagalung, Oskar Sihombing, Ratna Suti Astuti, Saripudin, Wanri Malau, and Yusuf Ismail. We would like to thank Dr. J.F. Veldkamp (L) who provided the Latin diagnosis and critically read the manuscript. We also thank Prof. Dr. A. Latiff Mohamad (UKM) for his support and comments. Last but not least thank to Mr. Subari for excellent drawing of the specimen.

#### REFERENCES

- ANONIM, 1990. *Press release penemuan Rafflesia di Gunung Salak, Jawa Barat*. Lawalata IPB, Bogor. (unpubl.)  
 BACKER, C.A. & BAKHUIZEN van den BRINK Jr., R.C. 1964 (“1963”). *Flora of Java* 1: 165. Noordhoff,

- Groningen.  
 BARCELONA, J. F., CO, L.L., BALETE, D.S. & BARTOLOME, N.A. 2009a. *Rafflesia aurantia* (Rafflesiaceae): A new species from Northern Luzon, Philippines. *Gard. Bul. Sing.* 61: 17–28.  
 BARCELONA, J.F., PELSER, P.B., BALETE, D.S. & CO, L.L. 2009b. Taxonomy, ecology and conservation status of Philippine *Rafflesia* (Rafflesiaceae). *Blumea* 54: 77–93.  
 BARKMAN, T.J., BENDIKSBY, M., LIM, S.H., MAT-SALLEH, K., NAIS, J., MADULID, D.A. & SCHUMACHER, T. 2008. Accelerated rates of flora evolution at the upper size limit for flowers. *Current Biology* 18: 1508–1513.  
 DAVIS, C.C., LATVIS, M., NICKRENT, D.L., WARDUCK, K.J. & BAUM, D.A. 2007. Floral gigantism in *Rafflesiaceae*. *Science* 315:1812.  
 JAFARSIDIK, Y. & MEIJER, M. (1985, “1983”) *Rafflesiaceae di Jawa*. *Bul. Kebun Raya Bogor* 6: 73–76.  
 MAT-SALLEH, K. & LATIFF, A. 1989. A new species of *Rafflesia* and notes on other species from Trus Madi Range, Sabah (Borneo). *Blumea* 34: 111–116.  
 MAT-SALLEH, K., MAHYUNI, R., SUSATYA, A. & VELDKAMP, J. F. 2010 *Rafflesia lawangensis* (Rafflesiaceae), a new species from Bukit Lawang, Gunung Leuser National Park, North Sumatra, Indonesia. *Reinwardtia* 13(2):159–165.  
 MEIJER, W. 1998. *Rafflesiaceae*. *Flora Malesiana* I, 13: 1–42. Rijksherbarium / Hortus Botanicus, Leiden.

- SUSATYA, A., ARIANTO, W. & MAT-SALLEH, K. 2005. *Rafflesia bengkuensis* (Rafflesiaceae), a new species from South Sumatra, Indonesia. *Folia Malays.* 6: 139–152.
- VELDKAMP, J. F. 2007. Some notes on the cultivation of *Rafflesia*. *Fl. Males. Bull.* 14: 50–53.
- VELDKAMP, J. F. 2009. Notes on the name of the *Tetrastigma* (Vitaceae) hosts of *Rafflesia* (Rafflesiaceae). *Reinwardtia* 13(1): 75–78.
- WIRIADINATA, H. 1993. *Patma raksasa* (*Rafflesia arnoldii*) Rob. Brown. *Puspa Langka Indonesia yang perlu dilestarikan*. Paper presented on Sarasehan sehari melestarikan alam dan meningkatkan kualitas lingkungan melalui cinta puspa dan satwa. Bogor 3 Nov. 1993. Puslitbang Biologi dan UPT Kebun Raya LIPI bekerjasama dengan KLH dan Ditjen PHPA.
- WIRIADINATA, H. & ALAM, S. 1990. *Rafflesia arnoldii* a giant among flowers. *Voice of Nature* 84: 14–19.
- ZUHUD, E.A.M., HIKMAT, A. & JAMIL, A. 1998. *Rafflesia Indonesia*. Yayasan Pembinaan Suaka Alam dan Suaka Margasatwa Indonesia dan Laboratorium Konservasi Tumbuhan Jur. Konservasi Sumberdaya Hutan Fak. Kehutanan IPB, Bogor. 38 pp.



## INSTRUCTION TO AUTHORS

*Reinwardtia* is a scientific journal on plant taxonomy, plant ecology, and ethnobotany. Manuscript intended for a publication should be written in English represent an article which has not been published in any other journal or proceedings. Every manuscript will be sent to two blind reviewers.

Two printed copies (on A4 paper) of the manuscript of not more than 200 pages together with an electronic copy prepared on Word Processor computer program using Time New Romance letter type and saved in Rich Text File must be submitted.

For the style of presentation, authors should follow the latest issue of *Reinwardtia* very closely. Title of the article should be followed by author's name and mailing address in one-paragraphed English abstract of not more than 250 words. Keywords should be given below each abstract. On a separated paper, author(s) should send the preferred running title of the article submitted.

Taxonomic identification key should be prepared using the aligned couplet type.

Strict adherence to the International Code of Botanical Nomenclature is observed, so that taxonomic and nomenclatural novelties should be clearly shown. Latin description for new taxon proposed should be provided and the herbaria where the type specimens are deposited should be presented in the long form that is name of taxon, author's name, year of publication, abbreviated journal or book title, volume, number and page.

Map, line drawing illustration, or photograph preferably should be prepared in landscape presentation to occupy two columns. Illustration must be submitted as original art accompanying, but separated from the manuscript. On electronic copy, the illustration should be saved in jpg or gif format at least 350 pixels. Legends or illustration must be submitted separately at the end of the manuscript.

Bibliography, list of literature cited or references follow the Harvard system.

|   |     |
|---|-----|
| HARRY WIRIADINATA & RISMITA SARI. A new species of <i>Rafflesia</i> ( <i>Rafflesiaceae</i> ) from North Sumatra .....   | 95  |
| ARY P. KEIM. A new species of <i>Freycinetia</i> ( <i>Pandanaceae</i> ) from Papua New Guinea.....  | 101 |
| ROBERT GRADSTEIN <i>et al.</i> Bryophytes of Mount Patuha, West Java, Indonesia.....  | 107 |
| ABDULROKHMAN KARTONEGORO & J. F. VELDKAMP. Revision of <i>Dissochaeta</i> ( <i>Melastomataceae</i> ) in Java, Indonesia.....  | 125 |
| NURSAHARA PASARIBU. Two new species of <i>Freycinetia</i> ( <i>Pandanaceae</i> ) from Sumatra, Indonesia.....   | 147 |
| ARY P. KEIM. & M. RAHAYU. <i>Pandanaceae</i> of Sumbawa, West Nusa Tenggara, Indonesia.....   | 151 |
| K. MAT-SALEH, RIDHA MAHYUNI, AGUS SUSATYA, J. F. VELDKAMP. <i>Rafflesia lawangensis</i> ( <i>Rafflesiaceae</i> ), a new species from Bukit Lawang, Gunung Leuser National Park, North Sumatra, Indonesia.....           | 159 |
| J. F. VELDKAMP & R. M. K. SAUNDERS. <i>Goniothalamus tripetalus</i> (Lam.) Veldk. & R. M. K. Saunders ( <i>Annonaceae</i> ), <i>comb. nov.</i> ....   | 167 |
| M. M. J. VAN BALGOOY. An updated survey of Malesian Seed Plants Families.....   | 171 |
| NURHAIDAH IRIANY SINAGA. Two new species of <i>Freycinetia</i> ( <i>Pandanaceae</i> ) from Manokwari, West Papua .....  | 183 |
| NURHAIDAH IRIANY SINAGA, RITA MEGIA, ALEX HARTANA & ARY PRIHARDHYANTO KEIM. The ecology and distribution of <i>Freycinetia</i> Gaud. ( <i>Pandanaceae</i> ; <i>Freycinetioideae</i> ) in the Indonesian New Guinea..... | 189 |
| EIZI SUZUKI. Tree flora on freshwater wet habitats in lowland of Borneo: Does wetness cool the sites..  | 199 |
| NANDA UTAMI & HARRY WIRIADINATA. <i>Impatiens mamasensis</i> ( <i>Balsaminaceae</i> ), a new Species from West Celebes, Indonesia.....  | 211 |
| M. ARDIYANI, A. D. POULSEN, P. SUKSATHAN, F. BORCHSENIUS. <i>Marantaceae</i> in Sulawesi.....   | 213 |