



A JOURNAL ON TAXONOMIC BOTANY,
PLANT SOCIOLOGY AND ECOLOGY



REINWARDTIA

12(3)

REINWARDTIA

*A JOURNAL ON TAXONOMIC BOTANY,
PLANT SOCIOLOGY AND ECOLOGY*

Vol. 12(3): 205-259. 22 Desember 2006

Editors

ELIZABETH A. WIDJAJA, MIEN A. RIFAI, SOEDARSONO RISWAN, JOHANIS P. MOGEA

Correspondence and subscriptions of the journal should be addressed to
HERBARIUM BOGORIENSE, BIDANG BOTANI, PUSAT PENELITIAN BIOLOGI - LIP1,
BOGOR, INDONESIA

ANANGIA, A NEW MONOTYPIC GENUS OF CUCURBITACEAE FROM EAST MOLUCCAS

W.J.J.O. DE WILDE, B.E.E. DUYPJES & R.W.J.M. VAN DER HAM

Nationaal Herbarium Nederland, Universiteit Leiden Branch, P.O. Box 9514, 2300 RA Leiden, The Netherlands

SUMMARY

DE WILDE, W.J.J.O.; DUYPJES, B.E.E. & VAN DER HAM, R.W.J.M. 2006. *Anangia*, a new monotypic genus of *Cucurbitaceae* from East Moluccas. *Reinwardtia* 12(3): 219 – 222.– A new monotypic genus of *Cucurbitaceae* from Morotai (Indonesia) is described. The genus is defined by unique characters, including large sepals, much longer than the petals, and it has distinctly cucurbitoid pollen features. The only species is *Anangia macrosepala* W.J. de Wilde & Duyfjes.

Keywords: Cucurbitaceae, *Anangia*, new monotypic genus, pollen, SE Asia.

ABSTRAK

DE WILDE, W.J.J.O.; DUYPJES, B.E.E. & VAN DER HAM, R.W.J.M. 2006. *Anangia*, suatu marga monotipe baru *Cucurbitaceae* dari Maluku Timur. *Reinwardtia* 12(3): 219 – 222.– Suatu marga monotipe baru *Cucurbitaceae* dari Morotai dipertelakan dicirikan oleh daun kelopak besar yang jauh lebih panjang dari daun mahkota dan mempunyai serbuk sari yang khas untuk *Cucurbitaceae*. Satu-satunya jenis adalah *Anangia macrosepala* W.J. de Wilde & Duyfjes.

Kata kunci: *Cucurbitaceae*, *Anangia*, marga monotipe baru, pollen, Asia Tenggara.

INTRODUCTION

Material of the here described monotypic new cucurbitaceous genus remained for a long time unidentified and its belonging to that family was even uncertain. It consists of a single collection (in BO and L) made on 20 March 1938 at Wajaboela, west coast of Morotai (northern East Moluccas) and perhaps of a second collection also in 1938 from Yamdena (southern East Moluccas). The latter concerns a branch of *Anangia* of the same appearance as the Morotai material, possibly erroneously mounted together with a collection of *Neochamandra backeri* (*Buwalda* 4057, BO). The collection from Morotai (*Anang* 325) consists of several separate suberect branches with only a few tendrils on the lower nodes. Apparently the shoots were cut-off from a low herbaceous plant with several suberect shoots, possibly sprouting from a tuber. Nothing is known from its habitat. Morotai has a rather evenly wet climate (Holthuis & Lam, 1942), and March belongs to the wettest season. The herbarium label gives no further information. The collector Anang was a *mantri* (assistant) from the Botanic Gardens at Bogor. He attended

an exploration tour by G.A.L. de Haan to Morotai in search for the coniferous resin 'damar' during which he also collected herbs for the Herbarium (Kruseman, 1950, XXX).

Anangia W.J. de Wilde & Duyfjes, *gen. nov.*

Herba humilis suberecta monoecia. Flores receptaculi tubus minutus vadosus. Discus abest. Flores masculi: sepala magna c. 10 mm longa petalis circa duplo longiora, stamina 5 libera omnia unitheca, thecae sinutae. Flores foeminei: stylus columnaris brachiis longis 3 quibusque stigmato bifurcato. — Typus: *Anangia macrosepala* W.J. de Wilde & Duyfjes, *spec. nov.*

Low suberect herb, tuberous(?), monoecious. *Probract* present in association with flowers. *Tendrils* 2-branched. *Leaf blade* simple, not lobed or shallowly lobed. *Flowers* solitary, erect, long-pedicelled; perianth large, sepals much longer than petals; disc absent; receptacle tube small, shallow. *Male flowers*: stamens 5, free, inserted at base of receptacle, erect, four in two pairs and one solitary, anthers all 1-thecous, thecae sinuate; disc (pistillode) absent. *Female flowers*: ovary elongate, ovules numerous, horizontal, style 1,

columnar, 3-armed, each with bifurcate stigma. One species in Indonesia (Morotai).

Anangia macrosepala W.J. de Wilde & Duyfjes, *spec. nov.* — Fig. 1, 2

Herba ramosa 20–30 cm alta subglabra. Flores solitarii. Pedicellis longis. Flores masculi sepalis c. 10 mm longis, petalis c. 5 mm longis, staminibus erectis, antheris; foeminei ovario longe fusiformi c. 15 mm longi, stylo c. 4 mm longo, brachiis gracilibus. — Typus: *Anang* 325 (holo BO; iso L), Morotai.

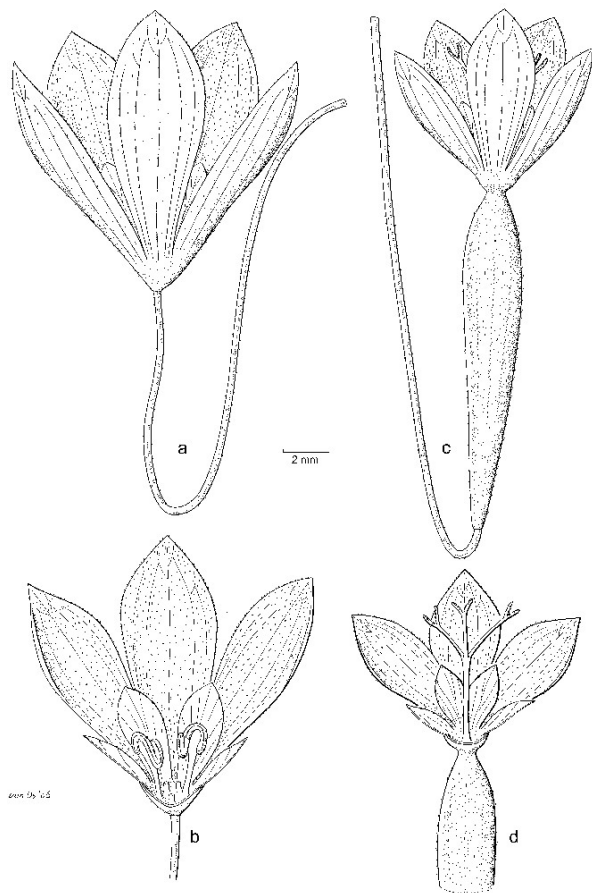


Fig. 1. *Anangia macrosepala* W.J. de Wilde & Duyfjes. a. Portion of sterile branch; b. lower node showing 2-branched tendril; c. node with female flower, possibly erroneously mounted on *Buwalda* 4057. — *Neoachmandra backeri* W.J. de Wilde & Duyfjes subsp. *backeri*. d. Node with male flower (a, b: *Anang* 325; c, d: *Buwalda* 4057 (BO)).

Herb, several-stemmed, c. 30 cm tall, subglabrous, possibly tuberous; monoecious; stems suberect, much branched, sparsely minutely hairy, (1–)2 mm diameter. Probract present at base of pedicels, oblong-spathulate, 1(–1.5) cm long. Tendrils only seen on lower nodes, 2-

branched from below the middle. Leaves blade membranous, elliptic-rhomboid or sub-triangular, 1.5–2 by 1.5–2.5 cm, base truncate or ± cuneate, narrowly decurrent on the petiole (and thence the basal nerves branching off from above the base of the blade), apex acute, margin sparsely minutely dentate, both surfaces minutely harshly hairy, cystoliths minute, inconspicuous; petiole 1–3 cm long. *Flowers* subglabrous; mature buds not known. *Male flowers*: pedicel 35–40 mm long, at apex not articulate; receptacle-tube c. 1.5 by 3 mm, papillose inside;

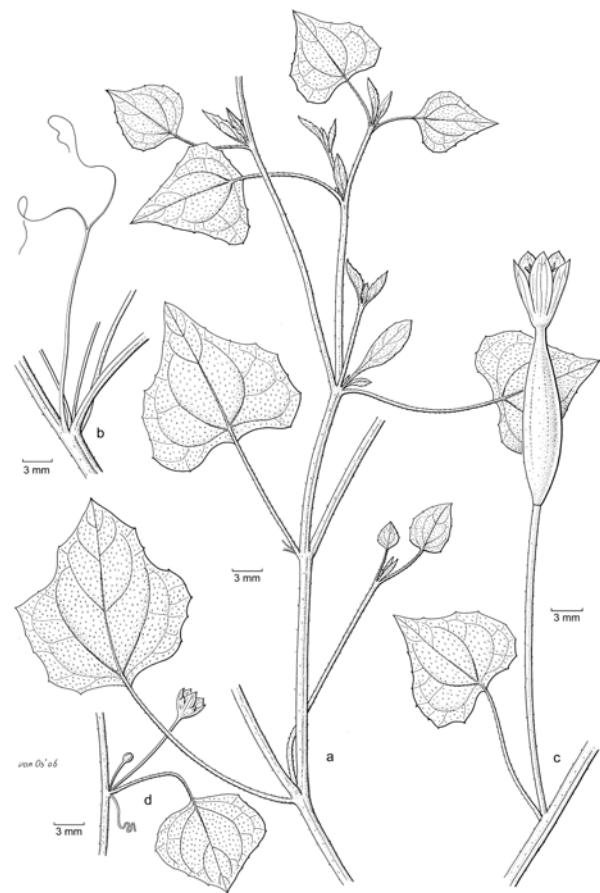


Fig. 2. *Anangia macrosepala* W.J. de Wilde & Duyfjes. a. Male flower, showing large sepals and small petals; b. male flower opened, showing irregularly sinuate thecae; c. female flower, showing large sepals and small petals; d. female flower opened, showing style and forked stigmas (a–d: *Anang* 325 (BO)).

sepals large, much larger than petals, elliptic-oblong, 10–12 by 5–6 mm, base ± narrowed and ± clawed, apex acute, glabrous but margin very finely hairy (hairs 0.1 mm long or less), adaxial surface sparsely papillose; petals free, shape similar to sepals, 5–6 by 2.5–3 mm,

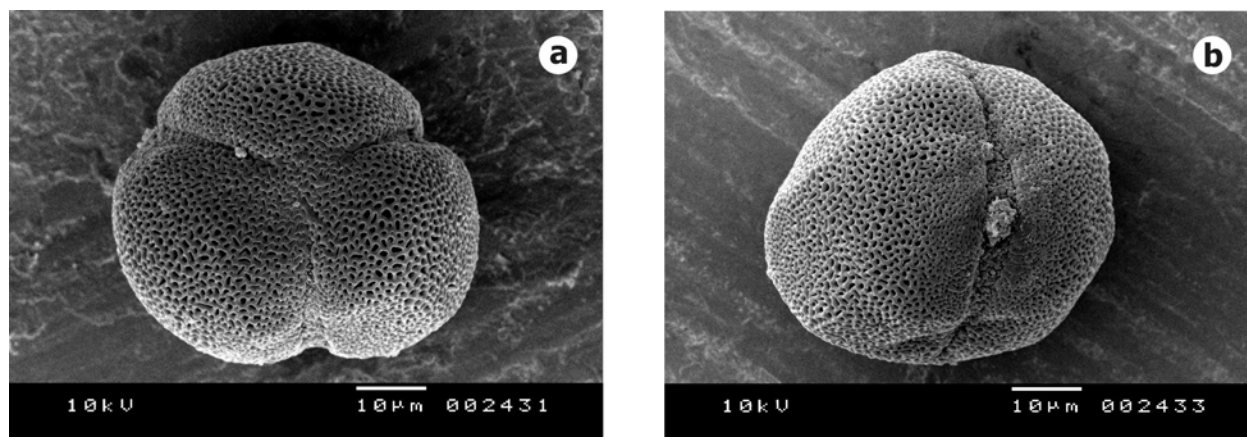


Fig. 3. *Anangia macrosepala* W.J. de Wilde & Duyfjes. a. Pollen grain, polar view. b. pollen grain, equatorial view. Bar = 10 µm.

glabrous, the main veins ending in the margin with a minute dot; filaments c. 1.5 mm long, glabrous, anthers irregularly long-ellipsoid, 1.5–2 mm long, theca irregularly sinuate, at one side along the margin of a broad and thin glabrous ‘connective’ (see fig. 2). *Female flowers*: pedicel 25–30 mm long, indistinctly articulate at apex; ovary oblong-linear, subfusiform, broadest above the middle, 15–17 by 2.5–3 mm, with 0.2 mm long hairs; perianth as in male flowers but smaller; receptacle tube 1 by 3 mm; sepals c. 8 by 4 mm; petals (estimated because of incomplete material) c. 2.5 by 1.5 mm; style slender, c. 4 mm long, glabrous, at apex 3-armed, each arm 2–2.5 mm long ending in a deeply forked stigma c. 1 mm long, finely papillose; disc absent. *Fruit & seeds* unknown.

DISTRIBUTION. Moluccas: Morotai, known only from the type; possibly also Yamdena.

HABITAT & ECOLOGY. Only the collecting date of the flowering plant is known: March 1938.

NOTE. The flower-colour of this remarkable large-flowered plant is unrecorded.

AFFINITIES. The stamens are reminiscent of those of forms of *Luffa cylindrica* (L.) M. Roem. with free stamens. Therefore, possibly, *Anangia* belongs in the tribe *Luffeae* (C. Jeffrey) C. Jeffrey of subfamily *Cucurbitoideae*, as defined by Jeffrey, 2005, but see also under pollen morphology.

POLLEN MORPHOLOGY

Pollen grains of *Anangia macrosepala* (Anang 325; fig. 3) are large, 3-colporate monads with

long colpi and circular to elliptic (lalongate) endopores. Each endopore is surrounded by a very distinct costa. The exine ornamentation is finely reticulate. Dimensions: polar axis (P) 73 µm, equatorial diameter (E) 73 µm.

The pollen fits very well in the *Cucurbitaceae*, and because of the considerable size of the pollen grains, and the presence of very distinct costae surrounding the endopores, it should be accommodated in the subfamily *Cucurbitoideae*. According to Khunwasi (1998), members with 3-colporate, reticulate, relatively large pollen with long colpi and distinctly costate endopores are found only in the subtribe *Benincasinae* of the tribe *Benincaseae* (*Acanthosicyos*, *Coccinea*, *Eureiandra*, *Lagenaria*). The pollen of *Luffa* is comparable, but has less distinct costae around the endopores.

ACKNOWLEDGEMENTS

We thank the curators of BO and L who enabled us to study their Herbarium collections used for the present treatment of *Anangia*, Bertie Joan van Heuven (L) for preparation and photography of the pollen, Jan Frits Veldkamp (L) for the translations into Latin of the diagnoses of the new taxa, Jan van Os (L) for the beautiful informative drawing, and Ben Kieft (L) for the scanning of the drawing.

REFERENCES

- HAAN, G.A.L. DE. 1939. Verslag van een tournee naar de eilanden Ternate, Morotai en Halmahera in het jaar 1938. *Mimeographed*: 1–20.
- HOLTHUIS, L.B. & LAM, H.J. 1942. A first contribution to our knowledge of the flora of the Talaud Islands and Morotai. *Blumea* 5: 93–256.
- JEFFREY, C. 2005. A new system of *Cucurbitaceae*.

- Bot. Zhurn. (St. Petersburg)* 90, 3: 332—335.
- KHUNWASI, C. 1998. Palynology of the *Cucurbitaceae*. *Dissertation Naturwissenschaftlichen Fakultät der Leopold-Franzens-Universität, Innsbruck*. 270 pp.
- STEENIS-KRUSEMAN VAN, M.J. 1950. Cyclopedia of botanical exploration. *Fl. Males.*, Ser. 1, 1. Spermat.: 14. Noordhoff-Kolff N.V., Jakarta.

INSTRUCTION TO AUTHORS

Manuscripts intended for publication in *Reinwardtia* should be written either in English, French or German, and represent articles which have **not been** published in any other journal or proceedings. **Each** manuscript received will be considered and **processed** further if it is accompanied by signed **statements** given independently by two reviewers **chosen** by the author(s) attesting to its merits as well as its scientific suitability for publication in *Reinwardtia*.

Two printed copies (on A4 paper) of the manuscript of not more than 200 pages should be sent to Editors, together with an electronic copy prepared on Word Processor computer programme using Times New Romance letter type and saved as Rich Text File must be submitted.

For the style of presentation authors should follow the latest issue of *Reinwardtia* very closely. Title of the article should be followed by author's name and mailing address and a one-paragraphed abstract in English (with French or German abstract for papers in French or German) of not more than 250 words. Keywords should be given below each abstract. On a separate paper author(s) should prepare the preferred running title of the article submitted.

Taxonomic keys should be prepared using the aligned-couplet type.

Strict adherence to the *International Code of Botanical Nomenclature* is observed, so that taxonomic and nomenclatural novelties should be clearly shown, Latin description for new taxon proposed should be provided, and the herbaria where type specimens are deposited should be indicated. Synonyms should be presented in the long form [name of taxon, author's name, year of publication, abbreviated journal or book title, volume (number): [page]].

Maps, line drawing illustrations or photographs preferably should be prepared in landscape presentation to occupy two columns. Illustrations must be submitted as original art accompanying, but separate from, the manuscripts. On electronic copy, the illustrations should be saved in .jpg or .gif format. Legends for illustrations must be submitted separately at the end of the manuscript.

Bibliography, list of literature cited or references follow the Harvard System.

For each paper published author(s) will receive 25 copies of reprints free of charge. Any additional copies should be ordered in advance and the author(s) will be charged accordingly.

CONTENTS

Page

BENITO C. TAN, BOON-CHUAN HO, VIRGILIO LINK, EKA A.P. ISKANDAR, IPAH NURHASANAH, LIA DAMAYANTI, SRI MULYATI and IDA HAERIDA. Mosses of Gunung Halimun National Park, West Java, Indonesia.....	205
S. DEWI. <i>Stachylidium pallidum</i> Dewi sp. nov. from Java	215
W.J.J.O. DE WILDE, B.E.E. DUYFJES and R.W.J.M. VAN DER HAM. <i>Anangia</i> , a new monotypic genus of <i>Cucurbitaceae</i> from East Mollucas	219
TOPIK HIDAYAT, TOMOHISA YUKAWA and MOTOMIITO. Evolutionary analysis of pollinaria morphology of <i>subtribe Aeridinae (Orchidaceae)</i>	223
DOLLY PRIATNA, KUSWATA KARTAWINATA and ROCHADI ABDULHADI. Recovery of a lowland dipterocarp forest twenty two years after selective logging at Sekundur, Gunung Leuser National Park, North Sumatra, Indonesia	237
MARTHEN T. LASUT. A new species of <i>Ischaemum</i> from Sulawesi	257