

5-13-2020

A Screening Tool for the Direct Analysis of Marine and Freshwater Phycotoxins in Organic SPATT Extracts from the Chesapeake Bay

Michelle D. Onofiro
Virginia Institute of Marine Science

Claude R. Mallette

Allen R. Place

Juliette L. Smith
Virginia Institute of Marine Science

Follow this and additional works at: <https://scholarworks.wm.edu/vimsarticles>



Part of the [Marine Biology Commons](#)

Recommended Citation

Onofiro, Michelle D.; Mallette, Claude R.; Place, Allen R.; and Smith, Juliette L., A Screening Tool for the Direct Analysis of Marine and Freshwater Phycotoxins in Organic SPATT Extracts from the Chesapeake Bay (2020). *Toxins*, 12(5), 322.
doi: 10.3390/toxins12050322

This Article is brought to you for free and open access by the Virginia Institute of Marine Science at W&M ScholarWorks. It has been accepted for inclusion in VIMS Articles by an authorized administrator of W&M ScholarWorks. For more information, please contact scholarworks@wm.edu.

Article

A Screening Tool for the Direct Analysis of Marine and Freshwater Phycotoxins in Organic SPATT Extracts from the Chesapeake Bay

Michelle D. Onofrio ¹ , Claude R. Mallet ², Allen R. Place ³ and Juliette L. Smith ^{1,*}

¹ Virginia Institute of Marine Science, College of William & Mary, Gloucester Point, VA 23062, USA; mdonofrio@email.wm.edu

² Separation Technologies, Waters Corporation, Milford, MA 01757, USA; claude_mallet@waters.com

³ Institute of Marine and Environmental Technology, University of Maryland Center for Marine and Environmental Sciences, Baltimore, MD 21202, USA; place@umces.edu

* Correspondence: jsmith@vims.edu; Tel.: +1-804-684-7289

Received: 24 March 2020; Accepted: 7 May 2020; Published: 13 May 2020



Abstract: Many detection methods for phycotoxins, bioactive compounds produced by harmful algae, focus on one compound or a class of related compounds. Multiple harmful algal species often co-occur in the environment, however, emphasizing the need to analyze for the presence of multiple groups of marine and freshwater phycotoxins in environmental samples, e.g., extracts from solid phase adsorption toxin tracking (SPATT). Two methods were developed to screen for 13 phycotoxins (microcystin-RR, -LR, -YR, azaspiracid-1, -2, karlotoxin 3, goniiodomin A, brevetoxin-2, yessotoxin, pectenotoxin-2, dinophysistoxin-1, -2, and okadaic acid) in organic SPATT extracts using ultra-performance liquid chromatography–tandem mass spectrometry (UPLC-MS/MS) equipped with a trapping dimension (trap) and at-column dilution (ACD). The performance of each compound under 36 combinations of chromatographic conditions was characterized, and two final methods, acidic and basic, were selected based on peak shapes, signal intensities, resolution, and the separation in time of positive and negative MS ionization modes. Injection volumes of up to 1 mL were possible through trap/ACD technology, resulting in limits of detection between 0.001 and 0.05 µg/L across the analytes. Benefits highlighted in this study, beyond the improved detection limits and co-detection of multiple toxin groups, include the ability to inject samples of 100% organic solvent, ensuring analyte stability and streamlining workflow through the elimination of laborious sample preparation steps.

Keywords: phycotoxins; mass spectrometry; UPLC-MS/MS; at-column dilution; SPATT; microcystins; okadaic acid; azaspiracids; pectenotoxins; brevetoxins

Key Contribution: Two methods were developed for the analysis of 13 phycotoxins in organic SPATT extracts that eliminated the need for concentration, dry-down, and reconstitution steps, reducing time and labor required in sample preparation. The optimized methods proved successful as a screening tool for all 13 phycotoxins in SPATT extract from the lower Chesapeake Bay.

1. Introduction

Bioactive compounds produced by various species of harmful algae, or phycotoxins, have the potential to cause both mass mortalities of wildlife [1,2] and severe illnesses in humans [2,3]. Animals that ingest algae associated with phycotoxins may experience direct health effects and/or mortality, or they may serve as vectors of exposure to other organisms when consumed (Table 1) [3,4]. Human exposure can occur through the consumption of contaminated seafood [3] or drinking water [5], or

through respiration of aerosolized compounds [6]. Due to their hazardous effects, phycotoxins are monitored in edible tissue, drinking water, and the environment.

While robust and sensitive mass spectrometry methods have been incorporated into some monitoring programs, these methods are often developed for a single group of compounds, especially in regions where annual blooms of the same species occur. The global expansion in range and frequency of harmful algal blooms [7–9], however, emphasizes the need for multi-toxin detection methods for co-occurring harmful algae. Research regarding the presence of co-occurring harmful algal species and/or their associated phycotoxins has recently expanded, and such co-occurrences have now been documented globally [10–16]. Some algal species can co-produce multiple phycotoxins (Table 1), further adding to the suite of compounds that may be present in a given environmental sample. Additionally, the salinity gradient in estuaries and along coastal zones, such as Chesapeake Bay and its Eastern Shore, presents an increased probability for the co-occurrence of phycotoxins associated with marine and freshwater species [4,16,17].

A limited number of LC-MS methods for the co-detection and quantification of marine and freshwater phycotoxins have been published [18–21]. We sought, however, to develop a multi-toxin screening method for Chesapeake Bay’s unique suite of toxins observed across the salinity gradient (Table 1), streamline workflow, and improve method performance required for their trace analysis.

Ultra-performance liquid chromatography with tandem mass spectrometry (UPLC-MS/MS) equipped with a trapping dimension (trap) and at-column dilution (ACD) (Figure 1) was investigated. Applying trap/ACD to UPLC-MS/MS allows for large volume injections (50–1000 μ L) of extracts in 100% organic solvent [22]. This technology, therefore, has the potential to facilitate trace level analysis by improving detection limits, removes the need for dry-down and concentration steps, streamlining sample preparation [22], and minimizes lipophilic phycotoxin degradation or sorption loss that would otherwise occur in more typical aqueous extracts. As the intention is to later pair this novel screening method with SPATT, a common passive sampling tool that accumulates phycotoxins over deployment [11,23–27], a developed method also requires evaluation using SPATT samples. By applying UPLC-MS/MS with trap/ACD to SPATT organic extracts we expect to combine the benefits of low detection limits with cumulative sorption in the environment, respectively.

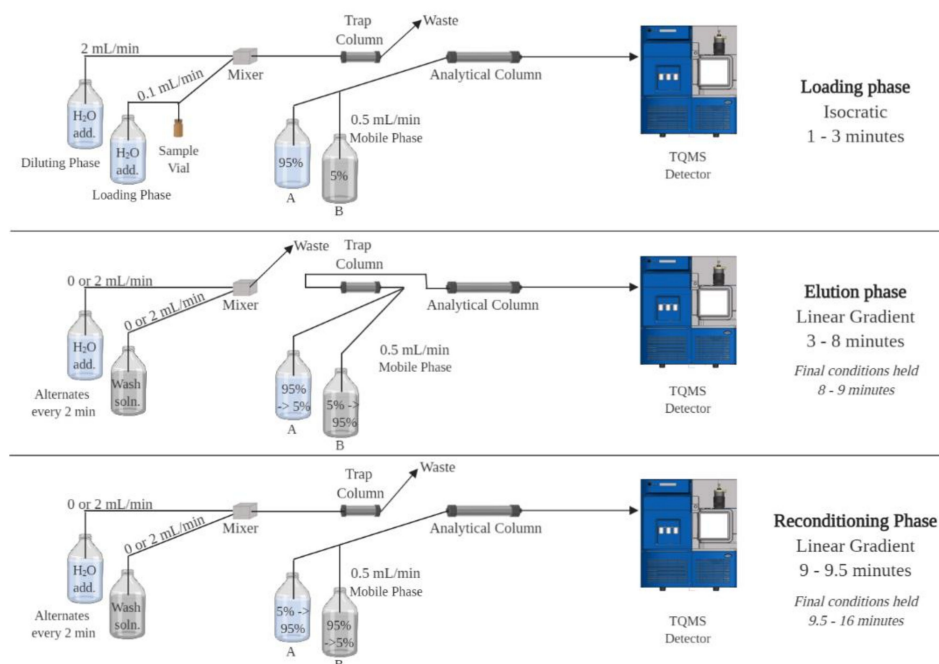


Figure 1. Schematic of a UPLC-MS/MS system equipped with a trapping dimension (trap) and at-column dilution (ACD).

Table 1. Summary [2,28,29] of 13 phycotoxins included in the development of a UPLC-MS/MS screening method

Phycotoxin Congener Abbreviation (Group)	Producer	Human Syndrome or Toxicity
GDA (goniodomins)	<i>Alexandrium monilatum</i>	Ichthyotoxic
OA; DTX1; DTX2 (okadaic acid and dinophysistoxins)	<i>Dinophysis</i> spp., <i>Prorocentrum lima</i>	Diarrhetic shellfish poisoning (DSP)
PTX2 (pectenotoxins *)	<i>Dinophysis</i> spp.	Acute toxicity in vertebrate model with i.p. injection
YTX (yessotoxin *)	<i>Protoceratium reticulatum</i> , <i>Gymnodinium catenatum</i> , <i>Pyrodinium bahamense</i> , <i>Gonyaulax</i> spp.	Acute toxicity in vertebrate model with i.p. injection
AZA-1; AZA-2 (azaspiracids)	<i>Lingulodinium polyedrum</i> <i>Amphidoma languida</i> , <i>Azadinium</i> spp.	Azaspiracid shellfish poisoning (AZP)
KmTx 3 (karlotoxins)	<i>Karlodinium</i> spp.	Ichthyotoxic
MC-LR; MC-YR; MC-RR (microcystins)	<i>Microcystis</i> spp., <i>Anabaena</i> spp., <i>Oscillatoria</i> spp. <i>Planktothrix</i> spp.	Hepatotoxic
PbTx-2 (brevetoxins)	<i>Karenia</i> spp.	Neurotoxic shellfish poisoning (NSP), ichthyotoxic

* Indicates a toxin group that is regulated in seafood products in the EU, but not in the US.

The overarching goal of this study, therefore, was to develop a screening tool for the detection of multiple marine and freshwater phycotoxins in SPATT samples collected from Chesapeake Bay. This study also aimed to conduct a comprehensive investigation of phycotoxin behavior under a variety of column and mobile phase chemistries. Phycotoxins included in this study (Table 1) were chosen to represent toxins (1) spanning a range of hydrophobicities from highly lipophilic (PbTx-2) to more polar (KmTx 3, microcystins), (2) federally regulated in marine seafood products or freshwater systems (i.e., OA, DTXs, microcystins), (3) of emerging national interest (AZAs), and/or (4) associated with animal illness within the local Chesapeake Bay (i.e., karlotoxins, goniodomin A). All variants within each phycotoxin group were not included in this study; instead, selection amongst congeners focused on parent structures or congeners most commonly detected in U.S. waters. For field-sample analysis, SPATTs deployed in the Chesapeake Bay region were extracted and analyzed for endogenous toxins and matrix effects using the finalized methods.

2. Results and Discussion

The selected marine and freshwater phycotoxins, ranging in hydrophobicity, mode of toxicity, and molecular weight (Table 1), were assessed for their performance under multiple combinations of chromatographic conditions in the development of a screening tool for Chesapeake Bay. The 13 diverse compounds were successfully co-detected in the same organic extract using two optimized final methods, one using acidic loading, diluting, and mobile phase solutions, and another using basic loading, diluting, and mobile phase solutions, with a C18 trap and analytical column. Method development was conducted using 50 µL injections of mixed toxins in 100% organic solvent to allow for the co-detection of trace compounds, improve analyte stability, and streamline workflow. The optimized method was then applied to 1000 µL injections as a proof-of-concept, demonstrating that the method could perform under circumstances where further-improved detection was required. The injection of elevated volumes, 50–1000 µL, of organic solution directly onto the UPLC-MS/MS system was possible via the trap/ACD technology. These final methods may be further adapted to include additional compounds of interest and other types of environmental samples beyond SPATTs.

2.1. Chromatographic Method Development

The performance of the 13 selected compounds in 36 combinations of trapping columns, analytical columns, and mobile phases was evaluated and characterized during method development (Figure 2). Overall, the C18 analytical column produced higher signal intensities than the C8 analytical column under acidic conditions, and signal intensities were comparable under basic conditions (data not shown). The C18 analytical column was, therefore, chosen for both methods with the added benefit that no changing of columns was needed between subsequent runs. The performance of C18 and Oasis Direct Connect trapping columns were superior to C8 in most cases (Figure 2). Coupling low loading pH with high eluting pH, or vice versa, produced poor peak shapes and relatively low signal intensities for many compounds evaluated. MC-RR, MC-LR, and MC-YR performed well under both basic and acidic conditions, but exhibited the highest sensitivity using basic conditions. AZA1 and AZA2 were best detected under acidic conditions and produced broad peaks under basic conditions. Under acidic conditions, a small peak with the same confirmatory MRM transition as PTX2 was detected at a retention time of 7.17 min, shortly after the peak for PTX2 at 6.76 min, while only one peak at 6.76 min was present for PTX2 under basic conditions. This agrees with published results about the epimerization of PTX2 under acidic conditions [30]. YTX was undetectable under acidic conditions but performed well under basic conditions. PbTx-2 and GDA produced better peak shapes and signal intensities under basic conditions than acidic conditions. DTX2 was detectable and exhibited good peak shape under almost all tested conditions, but had the greatest sensitivity using basic conditions. OA and DTX1 behaved similarly, with best peak shape and sensitivity observed under basic conditions. KmTx 3 exhibited the best sensitivity under basic conditions, but produced acceptable peak shape and sensitivity under acidic conditions with the C18 and Oasis trapping columns.

Table 2. Chromatographic conditions for the two final UPLC inlet methods: acidic and basic

Analyte	Trapping Column	Loading Conditions	Separation Column	Elution Conditions
				Acidic
				A: H ₂ O + 50 mM formic acid + 2 mM ammonium formate
				B: ACN + 50 mM formic acid + 2 mM ammonium formate
MC-LR	XBridge	H ₂ O + 50 mM	Acquity	Linear gradient 5% to 95% B over 5 min
MC-YR	BEH C18	formic acid + 2 mM	BEH C18	Isocratic 95% B for 1 min
MC-RR	130 Å	ammonium	130 Å	
AZA1	10 µm,	formate	1.7 µm,	
AZA2	2.1 × 30 mm	Isocratic for 3 min	2.1 × 50 mm	
KmTx 3				
				Basic
				A: H ₂ O + 6.7 mM NH ₄ OH
				B: ACN + 6.7 mM NH ₄ OH
GDA	XBridge	H ₂ O + 6.7 mM	Acquity	Linear gradient 5% to 95% B over 5 min
PTX2PbTx-2YTXOA	BEH C18	NH ₄ OH	BEH C18	Isocratic 95% B for 1 min
DTX1	130 Å	Isocratic for 3 min	130 Å	
DTX2	10 µm,		1.7 µm,	
	2.1 × 30 mm		2.1 × 50 mm	

Load:	Acidic	Acidic	Acidic	Neutral	Neutral	Neutral	Basic	Basic	Basic	Acidic	Acidic	Acidic	Neutral	Neutral	Neutral	Basic	Basic	Basic
Elute:	Acidic	Acidic	Acidic	Acidic	Acidic	Acidic	Acidic	Acidic	Acidic	Basic	Basic	Basic	Basic	Basic	Basic	Basic	Basic	Basic
Trap:	C8	C18	Oasis	C8	C18	Oasis	C8	C18	Oasis	C8	C18	Oasis	C8	C18	Oasis	C8	C18	Oasis
	1	2	3	4	5	6	7	8	9	10	11	12	13	14	15	16	17	18
MC-LR	7e4 sh	8e4	1e5	8e4	9e4	5e4 br	2e5 lead	1e5	1e5 split	1e5 sh	1e5 split	e5 tail	1e5	2e5	2e5	2e5	2e5	2e5 tail
MC-YR	1e5	8e4	6e4	6e4	6e4	3e4 br	1e5	1e5	6e4 split	4e4 br	7e4 split	e4 tail	1e5	1e5	1e5	1e5	2e5	1e5
MC-RR	3e5	4e5	3e5	3e5	3e5	3e5	6e5 tail	6e5	3e5	9e5	1e6	8e5	1e6	1e6	1e6	2e6	2e6	1e6
AZA1	4e6	5e6	4e6	4e6	5e6	4e6	5e6	6e6	5e6	1e6 br	1e6 br	1e6 br	1e6 br	1e6 br	2e6 br	2e6 br	2e6 br	2e6 br
AZA2	3e6	5e6	4e6	4e6	5e6 sh	lead	sh	6e6	sh	1e6 br	1e6 br	1e6 br	1e6 br	1e6 br	1e6 br	2e6 br	2e6 br	2e6 br
KmTx 3	3e3 split	7e3	6e3	e4 MP	6e3 split	9e3	1e4	split	2e4	MP	split	MP	4e4	3e4	4e4	6e4	6e4	6e4
GDA	1e5 lead	1e5 MP	2e5 lead	2e5 br	lead	2e5 sh	br	lead	br	br	br	br	5e5 br	6e5	5e5 br	6e5	6e5	5e5
PTX2	4e6 MP	3e6 MP	3e6 MP	3e6	4e6 MP	3e6	5e6	5e6	3e6 tail	7e6 MP	8e6 MP	6e6	8e6	1e7	7e6	1e7	1e7	7e6
PbTx-2	5e5 split		3e4 split	1e4 split	8e5 split	3e4 MP	8e4	6e6	1e5 sh	3e4 MP	1e5		3e4 MP	9e4	3e5		1e5	1e5
YTX													1e5	1e5	4e5	8e5	5e5	9e5
DTX2	2e5	3e5	4e5	4e5	3e5	3e5 tail	4e5	3e5	4e5	8e5	9e5	7e5	1e6	1e6	2e6	2e6	2e6	2e6
OA	3e5 lead	3e5 lead	4e5 lead	5e5 lead	4e5 lead	3e5 lead	4e5 lead	4e5 lead	4e5 lead	7e5	7e5	9e5	1e6	1e6	1e6	2e6	2e6	2e6
DTX1	4e5 sh	5e5 sh	5e5 sh	5e5 lead	6e5 lead	4e5 lead	7e5	6e5 lead	5e5 lead	2e6	1e6	1e6	2e6	2e6	2e6	3e6	2e6	3e6

Figure 2. Method development results showing the performance of 13 phycotoxins in 18 of the 36 trialed combinations of chromatographic conditions using a C18 analytical column. Loading phases were varied between acidic (formic acid), neutral (no additive), and basic (ammonium hydroxide); elution mobile phases were varied between acidic (formic acid) and basic (ammonium hydroxide), and C8, C18, and Oasis HLB Direct Connect HP trap columns were tested. Loading phases contained ultrapure water with 5% additive, while elution mobile phases contained (A) ultrapure water and (B) acetonitrile with 0.5% additive. Green boxes represent uniform, gaussian peak shape. Yellow boxes represent poor peak shape (sh: shoulder, br: broad, lead: leading, tail: tailing, MP: multiple peaks, split: split peak). Red boxes represent no detection. Numbers represent peak height. These results were used to devise the final methods listed in Table 2, which include modifications to methods 2 and 17.

Two methods, an acidic and a basic, were necessary for the detection of all 13 compounds evaluated. Although some compounds performed well in multiple combinations of chromatographic conditions, Method 2 (acidic conditions) and Method 17 (basic conditions) were chosen as the best methods to optimize based on each compound's peak shape and signal intensity, resolution between adjacent peaks, and the separation in time of positive and negative ionization modes (Figure 2). Retention time windows were used to eliminate loss in sensitivity from rapid switching between ESI+ and ESI- [31]. The range of retention times for compounds evaluated in ESI- (OA, DTX1, DTX2, YTX), therefore, had to be separated from the rest of the compounds. To satisfy this condition, MC-RR, -YR, and -LR were analyzed under acidic conditions even though they exhibited higher sensitivity when using basic conditions (Figure 2). This compromise ensured a retention time window for OA, DTX1, DTX2, and YTX that did not overlap with any positively ionizing compounds. When using the basic method, the mass spectrometer operates in ESI- from 3–6.20 min, and in ESI+ from 6.20–8 min. All compounds included in the acidic method were detected using ESI+.

2.2. Final Chromatography Methods

Once the compounds were designated to their acidic or basic method during development (Figure 2), steps were taken to further optimize the chromatographic conditions to achieve two final methods (Table 2). The compositions of the loading and mobile phases were refined from developmental methods by varying the amount (strength) of additive and by adding ammonium formate as a buffer to the acidic loading, diluting, and mobile phases. Overall, higher-strength additive loading (5%) and mobile (0.5%) phases (Figure 2) were adequate for the detection of all compounds tested. Lower-strength additive solutions, however, were selected for method optimization as they produced the highest sensitivity and eliminated shifts in retention time between injections. Final acidic loading and mobile phase solutions contained 50 mM (0.2%) FA + 2 mM ammonium formate, and final basic loading and mobile phases solutions contained 6.7 mM (0.1%) ammonium hydroxide (Table 2).

Using the two final methods, carryover and other performance metrics were evaluated, and field-sample analysis was conducted (see Sections 2.4 and 2.5); ultimately all compounds were well resolved and exhibited acceptable peak shape and signal intensity (Figure 3).

2.3. Reduction of Carryover

Upon the first attempt at evaluating the performance of the final methods (Table 2), carryover between samples resulted in high %RSD values (up to 26%) as peak areas for each compound increased during triplicate 50 μ L injections from the same vial. To reduce carryover, however, a wash step was introduced into the method, and was applied to all instrumental components up to, but not including, the analytical column: i.e., the injection and trapping circuits are washed with the solution. A wash solution containing acetonitrile, methanol, isopropyl alcohol, and acetone (1:1:1:1) + 5% formic acid was applied through the chromatographic inlet method at a flow rate of 2 mL/min in 2 min intervals, alternating with the aqueous loading phase. While the mobile phase gradient ran through the trapping and analytical columns between 3 and 8 min, the wash intervals ran through the flow-through needle injection loop and associated circuit, being sent to waste before reaching the trapping column. At 9 min, the wash intervals extended into the trapping column and were sent to waste without reaching the analytical column. The addition of these wash steps reduced carryover from 18.6% to <4%, and extended the run time from 10 to 16 min, producing a suitable wash step to move forward as part of the final two methods.

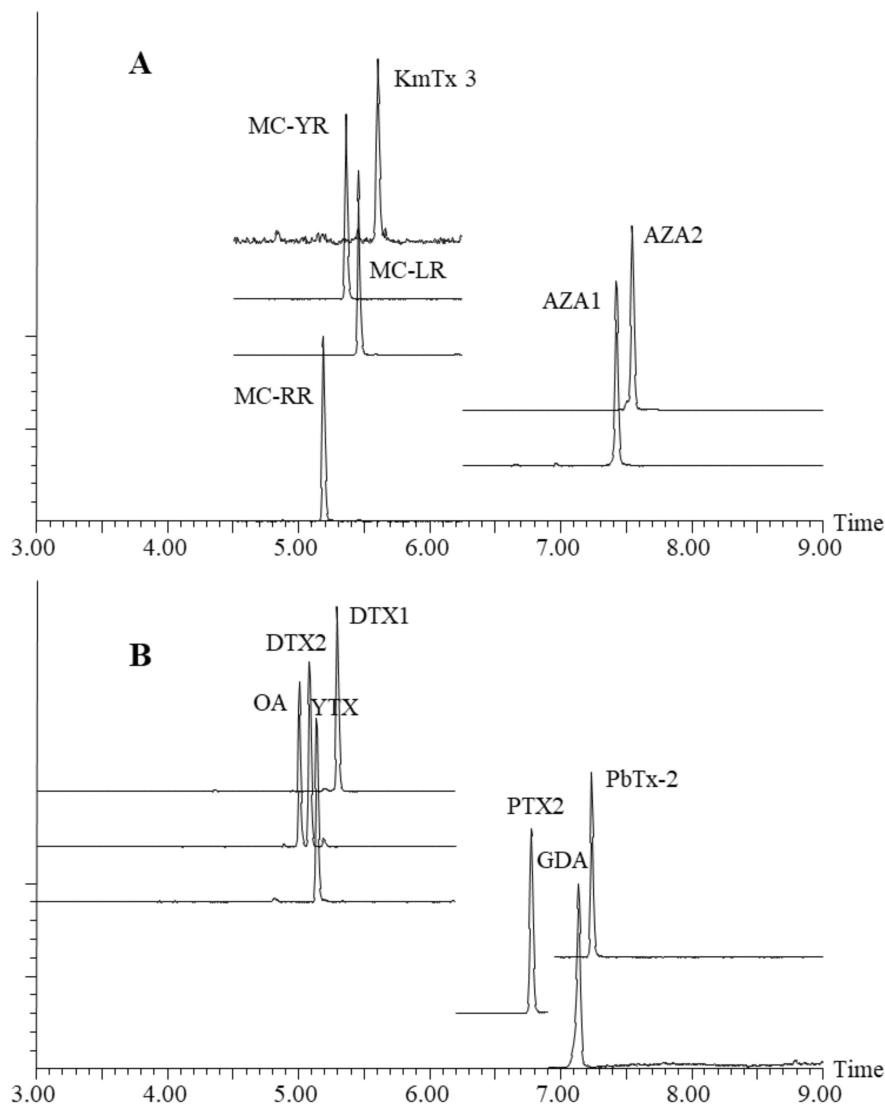


Figure 3. Chromatograms obtained from a 50 µL mixed-toxin standard run of the final, optimized methods under (A) acidic conditions, and (B) basic conditions.

2.4. Method Performance Characteristics

To evaluate method performance characteristics, acidic and basic methods were performed sequentially. All acidic injections were run first, followed by all basic injections. Three blank injections using the basic method were included after the last acidic injection and before the first basic injection to equilibrate the instrument to basic conditions.

Once carryover was addressed, linearity and percent relative standard deviation (%RSD) were evaluated and determined acceptable for the final two methods (Table 3). More specifically, two 10-point standard curves, across multiple orders of magnitude, were produced in triplicate for each compound to assess linearity across multiple orders of magnitude. One standard curve ranged from the closest concentration to each LOD (Table 3) through 5 µg/L, and the other from 5 µg/L through 50 µg/L. Linear regressions were performed on each curve, and all curves were linear within the tested range with squared correlation coefficients (R^2) values > 0.99. Similarly, to determine repeatability, percent relative standard deviation (%RSD) was used to compare peak areas obtained from replicate injections of the same mixed-standard solution. All %RSD values were below 5%, with the exception of PbTx-2 at 7.18% (Table 3). These results indicate that the final methods are reproducible for all 13 phycotoxins.

Limits of detection (LOD) and quantitation (LOQ) were determined for high-volume injections: 50 and 1000 μL (Table 3). Using standard solutions, LODs generated with 50- μL injections were, in general, on par with previously-reported LODs using traditional UPLC-MS/MS methods, with the exception of microcystins for which improved LODs have been reported (Table 3). By further increasing the injection volume to 1000 μL , lower limits of detection (LOD) were achieved for all 13 phycotoxins, surpassing published LODs for traditional UPLC-MS/MS analysis (Table 3). All experimentally-derived LODs ($S/N \geq 3$) were confirmed using triplicate injections of a mixed-standard solution at the LOD concentration, and/or through their comparison to mathematically-derived LODs (Table 3). In contrast to some literature methods, the methods reported herein did not require the addition of a concentration step, e.g., solid-phase extraction (SPE), evaporation to dryness, or the use of a high-resolution mass spectrometer to achieve improved detection limits (Table 3).

Together these results suggest that high-volume injections, up to 1000 μL , may be used to improve detection of analytes in field samples. Higher injection volumes are only recommended when trace analysis is needed, however, as instrument fouling can occur more rapidly when injecting these high volumes. Blank injections included after 1000 μL injections confirmed the lack of additional carryover due to the increased injection volume. We also note that repeatability was not sacrificed with high injection volumes, as %RSD values for both the 50 μL and 1 mL injections were within acceptable limits (Table 3).

This application highlights the benefits of UPLC-MS/MS with trap/ACD technology. Sample preparation time and labor were reduced, and evaporative loss was eliminated as 100% organic extracts were analyzed directly without additional clean-up or concentration and reconstitution steps. The reported low detection limits will be useful in exploring the prevalence of trace phycotoxin concentrations present in the Bay. This technology is not limited to phycotoxins, and application for other groups of compounds typically analyzed by LC-MS is possible.

2.5. SPATT Analysis

Triplicate SPATTs deployed at three sites in the Chesapeake Bay region were extracted using traditional methods [23], and 50 μL of organic extract was analyzed by the two final, optimized analytical methods (Table 2). In every SPATT extract that was analyzed, endogenous OA, DTX1, and PTX2 were detected (Figure 4). The amount of endogenous toxins in SPATT extracts were similar whether calculated using parent > parent or parent > daughter transitions (Table 4). SPATT extracts from the York River had the highest levels of each of these phycotoxins, while SPATT extracts from Wachapreague had the lowest. Across sites, OA (8.6–25 ng OA/g resin/day) was highest relative to DTX1 (0.06–4.4 ng DTX1/g resin/day) and PTX2 (0.4–2.9 ng PTX2/g resin/day). The positive detection of these phycotoxins confirms that this method is suitable for use as a screening tool for SPATT extracts.

Table 3. Results for the method performance characteristics of repeatability and limits of method detection and quantification using final two methods: acidic and basic. Limits of detection found in the literature from other studies using various LC-MS methods are presented for comparison.

Analyte	Literature			This Study						
	LOD LC-MS Methods (µg/L)	Reference	LOQ (S/N ≥ 10) 50 µL (µg/L)	LOD (S/N ≥ 3) 50 µL (µg/L)	%RSD 50 µL	LOD Calc. 50 µL (µg/L)	LOD Calc. 50 µL (pg on-column)	%RSD 1000 µL	LOD Calc. 1000 µL (µg/L)	LOD Calc. 1000 µL (pg on-column)
MC-RR	0.017 ^	[32]	0.31	0.13	3.81	0.07	3.5	3.66	0.007	7.5
MC-YR	0.043 ^	[32]	0.15	0.13	3.23	0.24	12	7.32	0.01	15
MC-LR	0.029 ^	[32]	0.15	0.13	3.10	0.25	13	5.80	0.01	12
AZA1	0.033	[33]	0.04	0.03	3.02	0.02	1.0	2.12	0.001	1.0
AZA2	0.070	[34]	0.04	0.03	2.56	0.01	0.5	3.11	0.001	1.5
GDA	2.34	[35]	1.98	0.60	2.43	0.39	19.5	2.45	0.019	19.2
KmTx3	4.0 *	[36]	1.39	0.97	5.64	0.64	32	5.64	0.05	54
OA	0.483	[33]	0.15	0.13	1.21	0.10	5.0	4.05	0.008	8.3
DTX1	0.030	[34]	0.15	0.13	2.30	0.11	5.5	5.87	0.01	12
DTX2	0.930	[20]	1.24	0.13	1.43	0.12	6.0	3.05	0.006	6.2
PTX2	0.048	[33]	0.04	0.03	1.89	0.04	2.0	3.91	0.004	3.7
YTX	0.336	[33]	1.24	0.50	1.19	0.14	7.0	4.27	0.03	34
PbTx-2	n.r.		0.15	0.13	7.18	0.16	8.0	7.39	0.03	15

^ Indicates when reported detection limit includes SPE concentration step, * indicates when reported on-column detection limit was converted to µg/L, S/N signal to noise ratio, %RSD percent relative standard deviation, LOQ limit of quantification, LOD limit of detection, calc. mathematically derived from six repeated injections, n.r. none reported.

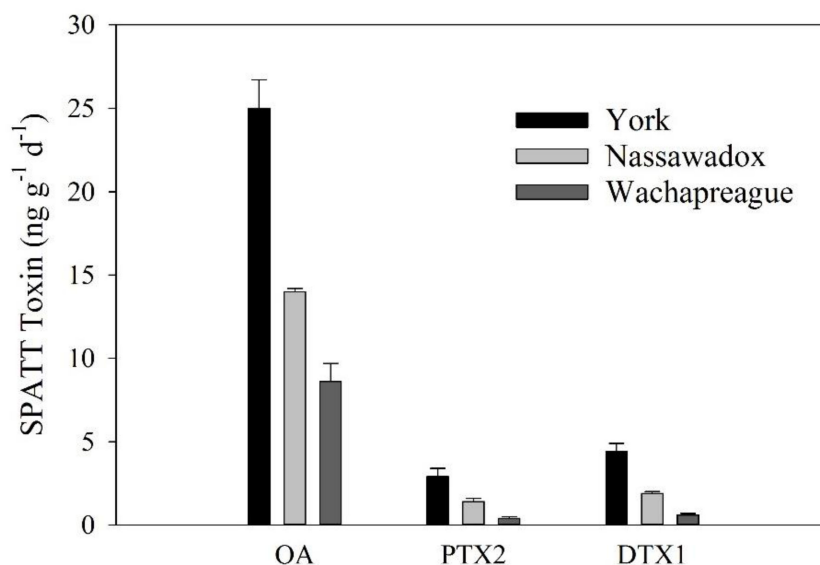


Figure 4. Endogenous OA, PTX2, and DTX1 in SPATT extracts from three sites in the lower Chesapeake Bay region using 50- μ L injections under the final two methods: acidic and basic. Data were generated using the parent > parent transitions and are represented as ng toxin per gram SPATT resin per day, and error bars represent standard deviation from triplicate field samples.

Table 4. Concentrations of endogenous phycotoxins in Chesapeake Bay SPATT extracts determined using the parent > parent transition (P > P) and the parent > daughter transition (P > D) for each compound. The final optimized methods were utilized with a 50 μ L injection volume.

	York		Nassawadox		Wachapreague	
	P > P (μ g/L)	P > D (μ g/L)	P > P (μ g/L)	P > D (μ g/L)	P > P (μ g/L)	P > D (μ g/L)
OA	34 \pm 2.4	27 \pm 2.3	21 \pm 0.4	17 \pm 0.3	13 \pm 1.7	11 \pm 1.2
PTX2	3.9 \pm 0.7	3.5 \pm 0.6	2.1 \pm 0.04	1.9 \pm 0.6	0.6 \pm 0.1	0.6 \pm 0.1
DTX1	6.1 \pm 0.7	6.1 \pm 0.7	2.8 \pm 0.1	2.9 \pm 0.2	1.0 \pm 0.2	1.0 \pm 0.2

Furthermore, when these SPATT extracts were spiked with a multi-toxin solution, all 13 toxins were detectable with $S/N > 3$ for the parent > parent transitions, showing that the final methods are suitable as a screening tool across the diverse suite of marine and freshwater toxins in Chesapeake Bay and the complex matrix associated with SPATTs. Varying levels of signal enhancement and signal suppression, however, were observed for each compound (Table 5), suggesting that targeted cleanup, matrix-matched standard curves, or the standard addition method should be considered in studies with more quantitative objectives. Signal suppression or enhancement was calculated by comparing spiked samples to a standard solution using the equation $Suppression\ or\ Enhancement\ (\%) = 100 \times \frac{spiked\ extract\ peak\ area}{spiked\ standard\ peak\ area}$. Signal suppression was observed for MC-RR, -LR, and -YR, AZA1, and AZA2. YTX showed signal enhancement in Nassawadox and Wachapreague extracts. Because OA, DTX1, and PTX2 were already present in the SPATT extracts from all three sites, matrix effects for these three compounds were evaluated by comparing the measured amount of endogenous toxins in non-spiked injections to the measured amount of toxins in the spiked samples. Percent suppression or enhancement was calculated as $\mu g\ measured\ in\ spiked\ sample / (\mu g\ endogenous\ toxin + \mu g\ toxin\ added) \times 100$.

Table 5. Signal enhancement (>100%) and signal suppression (<100%), \pm standard deviation, observed in spiked extracts from triplicate SPATTs deployed in York River, Nassawadox, and Wachapreague analyzed using final two methods: acidic and basic. Values are reported using the equation: *Suppression or Enhancement (%) = 100 \times spiked extract peak area/spiked standard peak area.*

	Suppression (<100%) or Enhancement (>100%)		
	York (%)	Nassawadox (%)	Wachapreague (%)
MC-RR	26 \pm 1	39 \pm 3	38 \pm 7
MC-LR	36 \pm 0.4	50 \pm 2	47 \pm 4
MC-YR	32 \pm 1	46 \pm 2	44 \pm 3
AZA1	33 \pm 1	33 \pm 2	43 \pm 12
AZA2	49 \pm 3	44 \pm 3	52 \pm 8
PbTx-2	146 \pm 7	109 \pm 13	123 \pm 5
YTX	103 \pm 2	132 \pm 10	121 \pm 18
DTX2	69 \pm 0.8	81 \pm 1	78 \pm 3
OA *	101 \pm 1	103 \pm 0.7	101 \pm 1
PTX2 *	57 \pm 2	45 \pm 0.8	36 \pm 7
DTX1 *	98 \pm 2	96 \pm 3	91 \pm 1

* calculated by difference due to endogenous phycotoxins present.

Instrumental LODs presented herein (Table 3) were determined using calibration standards, and as such, toxin-specific matrix effects in SPATT extracts may result in modified limits of detection. More specifically, phycotoxins that show suppression could be expected to have higher LODs in matrix, while phycotoxins that show enhancement could result in lower LODs in matrix (Table 5). As presented here, these methods serve as a screening tool for multiple phycotoxins present in SPATT extracts, part of an explorative study to determine which phycotoxins are present in Chesapeake Bay. For strictly quantitative analyses of trace-level concentrations, however, the impact of matrix effects on limits of detection can be further explored, but matrix effects will likely vary based on season, system, salinity, and depth of sampling, as typical with estuarine environmental samples, and may also vary based on injection volume, e.g., 50 μ L versus 1000 μ L.

3. Conclusions

Two UPLC-MS/MS methods with trap/ACD were developed and optimized to encompass 13 phycotoxins of interest. The use of C18 trapping and analytical columns for both developed methods allows them to be run sequentially, without an exchange of hardware, resulting in the automated analysis of a single sample for all 13 phycotoxins. This technology also allows samples to be injected from solutions in 100% organic solvents, thereby increasing analyte stability and solubility. In practice, these benefits allow for organic extracts from SPATTs, or other environmental samples, to be injected directly without the need for dry-down and reconstitution steps, thus streamlining processing by eliminating hours, or even days, of sample preparation time and avoiding potential evaporative loss. Additionally, this work demonstrates proof-of-concept for the use of this instrumentation with high-volume injections. In practice, if results from a 50- μ L injection show analyte(s) at or near the limit of detection/quantification, the sample can easily be rerun using a higher injection volume, up to 1 mL, to increase sensitivity instead of needing to concentrate the analyte(s) through further sample preparation. These methods were developed for use as a screening tool for the analysis of multiple marine and freshwater phycotoxins present in a single sample. For a strictly quantitative application of the developed methods, however, Figure 2 may be used as a reference to choose chromatographic conditions best suited for the specific suite of target compounds, further reduction of the matrix using additional sample clean-up steps could also be explored, and additional parent to daughter transitions could be included for quantification or further confirmation.

The selected compounds spanned marine and freshwater phycotoxins and a range of hydrophobicities relevant to Chesapeake Bay and other regions. These methods may be adapted to include congeners, other phycotoxins with similar polarities, or other classes of bioactive compounds traditionally analyzed by LC-MS. Figure 2 provides information about peak shape and relative signal intensity for the tested sets of chromatographic conditions, and can be used as a resource to select methods best suited for a particular group of phycotoxins. The ability to inject large volumes and screen for low concentrations of multiple marine and freshwater phycotoxins present in the environment is beneficial for both research and monitoring purposes. Detecting low concentrations may improve baseline data, allows for further research into the effects of low-level, chronic exposure, and provides the potential for early warning when phycotoxin concentrations begin to rise in samples collected for monitoring purposes. SPATT-based kinetic studies have not yet been completed for all phycotoxins included in our study. As such, we do not recommend that SPATTs replace more-traditional sampling methods in support of seafood or drinking water safety regulation, but rather serve as complementary sampling for monitoring purposes or research. Additionally, the intended use of these analytical methods is for research purposes; these methods are not recommended for use in regulatory settings without proper validation and certification.

4. Materials and Methods

4.1. Reagents and Analytical Toxin Standards

All acetonitrile (ACN), methanol (MeOH), isopropyl alcohol (IPA), and acetone (ACT) used were LC-MS grade (Honeywell Burdick & Jackson, MI, USA). Ultrapure water was prepared using a Milli-Q system (Millipore, Billerica, MA, USA). Formic Acid Optima LC/MS (Thermo Fisher Scientific, Waltham, MA, USA), Ammonium Formate Optima LC/MS (Thermo Fisher Scientific, Waltham, MA, USA), and ammonium hydroxide eluent additive for LC-MS ($\geq 25\%$, Honeywell Fluka, Charlotte, NC, USA) were used for mobile phases. Formic Acid 98% (EMD Millipore, Merck, Germany) was used for the carryover wash solution.

The following biotoxin certified reference materials were purchased from the National Research Council Canada: azaspiracid-1 (CRM-AZA1-b), azaspiracid-2 (CRM-AZA2-b), dinophysistoxin-1 (CRM-DTX1-b), dinophysistoxin-2 (CRM-DTX2-b), okadaic acid (CRM-OA-d), pectenotoxin-2, (CRM-PTX2-b), and yessotoxin (CRM-YTX-c). Brevetoxin-2 was purchased from Abcam (ab143469). A microcystin-RR, -YR, -LR mixed solution was purchased from Sigma Aldrich (33578-1ML). Karlotoxin 3 (KmTx 3) was purified from *Karlodinium veneficum* by Allen Place (UMCES, Maryland). Goniodomin A was purified from *Alexandrium monilatum* by Drs. Constance and Tom Harris [37] and provided by Dr. Kimberly Reece (VIMS).

4.2. Instrumentation

4.2.1. Mass Spectrometry Conditions

A tandem quadrupole Xevo TQ MS (Waters, Milford, MA, USA) equipped with electrospray ionization (ESI) was used with multiple reaction monitoring (MRM) for detection. Capillary voltage was 3.00 kV, desolvation temperature was 450 °C, desolvation gas flow was 1100 L/hr, collision gas flow was 0.15 mL/min, and source temperature was 150 °C. The mass spectrometer was operated in both ESI+ and ESI− modes.

Before chromatography was evaluated, direct infusion experiments were performed on all 13 phycotoxins to optimize cone voltage values for each compound, and collision energy values were tested by evaluating the production of fragment (daughter) ions (Table 6). A concentrated solution (50–100 µg/L) of each compound was prepared in methanol. Each solution was individually introduced into the mass spectrometer through direct infusion. First, composite spectra across 30 MS scans were assessed for various cone voltage values, starting at 20V and increasing in 10V increments. The

optimum cone voltage was determined as the cone voltage value that produced the highest molecular ion signal. Using the optimized cone voltage, composite spectra across 30 MS/MS scans were then assessed. Starting at 5 eV, collision energy was increased by 5 eV for each consecutive spectrum. From these spectra, daughter ions, and associated collision energies were evaluated. The collision energy values that resulted in the highest relative signal for the daughter mass compared to the parent mass were selected. Once these values were chosen, the exact mass for the daughter ion was chosen by observing the m/z value corresponding with the apex of the daughter ion peak. Parent > daughter transitions observed in this study resulted in a small loss of sensitivity due to poor fragmentation. To compensate for this loss in sensitivity, the parent > parent transition for each compound was used during method performance characterization, while the dominant parent > daughter transition was chosen for confirmation (Table 6). All parent > parent transitions were evaluated using a collision energy of 2 eV to minimize fragmentation.

Table 6. Mass spectrometry parameters for 13 phycotoxins determined through direct infusion experiments

Analyte	Ionization Mode	Adduct	Molecular Ion m/z	Cone Voltage (V)	Dominant Transition Detected	Collision Energy (eV)
MC-RR	ESI+	2H+	520.0	30	520.0 > 135.1	30
MC-YR	ESI+	H+	1045.5	30	1045.5 > 135.1	85
MC-LR	ESI+	H+	995.5	30	995.5 > 135.1	85
AZA1	ESI+	H+	842.4	30	842.4 > 824.6	30
AZA2	ESI+	H+	856.4	30	856.4 > 838.6	30
KmTx 3	ESI+	Na+	1347.7	70	1347.7 > 937.7	80
GDA	ESI+	NH ₄ ⁺	786.5	30	786.5 > 139.0	40
OA	ESI−	−H	803.5	30	803.5 > 255.5	60
DTX1	ESI−	−H	817.5	30	817.5 > 113.0	70
DTX2	ESI−	−H	803.5	30	803.5 > 255.5	60
PTX2	ESI+	NH ₄ ⁺	876.6	30	876.6 > 841.5	30
YTX	ESI−	−2H	571.1	30	571.1 > 467.7	30
PbTx-2	ESI+	H+	895.4	40	895.4 > 877.3	20

All compounds were assessed in both positive and negative ionization modes, and the mode resulting in the highest signal was chosen (Table 6) for the subsequent chromatography experiments and evaluation of the final methods. Of the 13 compounds, most were best detected in ESI+ mode, however, four analytes (OA, DTX1, DTX2, YTX) were best detected by mass spectrometry using ESI−. Due to the limited availability of purified material, KmTx 3 did not undergo direct infusion, and literature values were instead used for the purpose of method development [36].

4.2.2. Chromatographic Conditions

For all method development and method evaluation, the UPLC with trap/ACD system (Figure 1) comprised three binary pumps, one autosampler equipped with a 250 μ L loop, and one column manager. The fluidics were set in a 2-1 trap/elute configuration. Acquity I class binary solvent managers (Waters, Milford, MA, USA) were used within the UPLC with trap/ACD system: for the loading flow, ACD, and elution. At-column dilution was applied at a 20:1 ratio of ACD flow rate with the dilutor stream set to 2 mL/min, and the loading flow rate set to 0.1 mL/min. The elution mobile phase flow was set to 0.5 mL/min. Loading and diluting phases were prepared with ultrapure water. Acidic loading and diluting phases were prepared with formic acid, basic with ammonium hydroxide, and neutral with no additives. Acidic and basic mobile phases were prepared with ACN for the organic (B), and ultrapure water for the aqueous (A), using the same additives as above. Injection volumes were 50 μ L unless otherwise stated. The sample injection volume was carried by the loading flow, mixed with ACD flow, and sent to the trapping column. During the first 3 minutes of the 16-min chromatographic run,

these loading conditions were applied while mobile phase flow was sent through the analytical column and to the mass spectrometer. This three-minute loading period is necessary for the loading circuit to empty the 250 μ L loop, working in tandem with the diluting circuit to bring the full sample volume to the trapping column. At 3 min, valve positions were switched so that the mobile phase flowed through the trapping column before reaching the analytical column. This flow brings analytes to the analytical column, elutes them off the analytical column, and brings them to the mass spectrometer for detection. A linear gradient was applied to the mobile phase from 3–8 min, transitioning from 5% B to 95% B. From 8–9 min, mobile phase composition at 95% B was held constant. From 9–9.5 min, a linear gradient from 95% B to 5% B was applied, and from 9.5–16 min, the mobile phase flow rate was dropped to 0.2 mL/min and held at 5% B as wash steps were performed (see Section 4.3.1).

4.3. Development and Optimization

To determine the best chromatographic conditions for the 13 selected compounds, multiple combinations of trapping columns, analytical columns, and mobile phase solutions were evaluated using a mixed toxin standard with all 13 phycotoxins prepared in 100% methanol to each be a final concentration of 5 μ g/L. Positive identifications of compounds were established through detection of the parent mass, confirmatory parent > daughter transitions, and reproducible retention times. Each peak was qualitatively evaluated for adherence to Gaussian and uniform peak shape. Quantitative evaluations were performed using signal intensities of peak height, and a color-coded table was produced providing information about these qualitative and quantitative observations.

To compare the effects of various column chemistries on analyte separation, various trapping columns and analytical columns were evaluated. Reverse-phase trapping columns (Oasis HLB Direct Connect HP Column, 2.1 \times 30 mm, 20 μ m, 80 \AA ; XBridge BEH C18 Direct Connect HP Column, 2.1 \times 30 mm, 10 μ m, 130 \AA ; XBridge BEH C8 Direct Connect HP Column, 2.1 \times 30 mm, 10 μ m, 130 \AA) and analytical columns (Acquity BEH C18, 2.1 \times 50 mm, 1.7 μ m, 130 \AA ; Acquity BEH C8, 2.1 \times 50 mm, 1.7 μ m, 130 \AA) were purchased from Waters (Milford, MA, USA). VanGuard pre-columns matching the material of the analytical columns were also purchased from Waters.

In addition to traditional mobile phase solutions, UPLC-MS/MS with trap/ACD also utilizes loading and diluting phases. To determine the optimal conditions for loading, diluting, and mobile phases, multiple combinations of acidic, basic, and neutral solutions were evaluated for their relative effects on analyte separation, peak shape, and sensitivity [22]. Combinations (36) of columns, loading and diluting phases, and mobile phases, were tested. For these combinations, loading and diluting phases were prepared with 5% additive, and eluting phases were prepared with 0.5% additive.

Once the two best-performing methods were chosen from the 36 conditions, the amount of additive added to each solution was then varied to optimize conditions and create final methods. Signal intensities from injections of the same mixed-toxin standard were compared. Percent compositions for the loading phases were varied from 50 mM (0.2% *v/v*) to 1330 mM (5% *v/v*) formic acid for acidic, and from 6.7 mM (0.1% *v/v*) to 1300 mM (5% *v/v*) ammonium hydroxide for basic. For the mobile phases, acidic additive strengths ranged from 0.2% to 0.5% (*v/v*), while basic ranged from 0.1% to 0.5% (*v/v*). The minimum amount of additive tested for both basic and acidic loading and mobile phases was adopted from common literature values [19,31,33,38–40]. The addition of ammonium formate (2 mM) as a buffer to stabilize pH for the acidic solutions was also evaluated.

4.3.1. Carryover Management

Due to the high-volume injections (50–1000 μ L), carryover between samples was evaluated and various wash solutions were tested for their abilities to reduce carryover under the final methods. To evaluate for carryover, six 50- μ L injections of a 100% methanol blank were run after one 50- μ L injection of a 5 μ g/L mixed-toxin standard prepared in 100% methanol. Peak areas from the blank run were compared to peak areas from the standard run. Carryover was calculated as *blank peak area/standard*

$peak\ area \times 100$. Wash steps were prepared using mixtures of acetonitrile, methanol, isopropyl alcohol, acetone, and formic acid, and the timing and length of the wash steps was varied.

4.4. Method Performance Characteristics

The final methods were validated through a series of steps to confirm repeatability, establish method detection and quantification limits, determine the linearity range of standard curves, and confirm positive identification of each compound being evaluated. Parent > parent transitions were used during method performance characterization. Data generated using parent > parent transitions were later compared to parent > daughter transitions in SPATT extract (see Section 2.5).

4.4.1. Repeatability

To evaluate repeatability, 7 consecutive injections of an 8 µg/L mixed-toxin standard in 100% methanol were run. Standard deviations were calculated using the peak areas for each compound. Percent relative standard deviations (%RSDs) for each compound were calculated as $100 \times standard\ deviation/average\ peak\ area$.

4.4.2. Limits of Detection and Quantification

Limits of detection (LODs) were determined at two injection volumes, using two approaches: mathematically and by reporting the lowest concentration at which the signal to noise ratio (S/N) was greater than or equal to 3. To determine LODs mathematically, a mixed-toxin standard solution at a concentration 10× the estimated LOD for each compound was prepared in methanol. Repeated 50-µL injections (6) from a vial containing this standard were run, and the standard deviations of the peak areas for each compound were calculated. The LOD peak area for each compound was calculated as $3.14 \times standard\ deviation$, and the LOD concentration was calculated as $LOD\ peak\ area \times sample\ concentration/average\ peak\ area$. Limits of quantification (LOQs) are reported as the lowest concentration at which S/N was greater than or equal to 10.

LODs were likewise determined for 1000 µL injections. A mixed-toxin standard solution was prepared in methanol at 10× the estimated LOD for a 1000 µL injection, calculated using the LOD data from the 50 µL injections. Repeated injections (6) were run, and LODs were calculated as above. A mixed-toxin standard solution at the estimated LOD for a 1000 µL injection was also prepared, and triplicate injections were run to confirm $S/N \geq 3$.

4.4.3. Linearity

Two standard curves, a low and a high concentration curve, were produced for each compound to assess linearity across multiple orders of magnitude. A series of 20 dilutions of mixed-toxin standards were prepared between 0.04 µg/L and 50 µg/L. In triplicate, 50 µL injections were run using the two methods finalized through method development, and two standard curves were produced to determine high-concentration and low-concentration ranges of linearity. To confirm linearity, squared correlation coefficient (R^2) values must be >0.99 .

4.5. SPATT Analysis

To determine whether the developed methods were acceptable to use as a screening tool for environmental samples, SPATT passive samplers (SPATTs) were deployed, extracted, and analyzed for the 13 phycotoxins included in this study using the two final methods. Twelve SPATTs were constructed using 3.15 g Diaion HP20 resin. In triplicate, SPATTs were deployed in three locations in the lower Chesapeake Bay region for 2 weeks in April 2018: a tidal river estuary (York River, salinity ca. 22), coastal bayside (Nassawadox, salinity ca. 18), and seaside Eastern Shore (Wachapreague, salinity ca. 32). Upon recoveries, SPATTs were frozen until extraction. A traditional SPATT extraction method was employed [23]; in brief, SPATTs were thawed, rinsed with ultrapure water, transferred and packed

into empty glass solid phase extraction reservoirs, and extracted using 23 mL 100% methanol, (8:1 mL/g resin) at a flow rate no greater than 1 mL/min. Injections, 50 µL, of methanolic SPATT extracts were analyzed using the developed methods to quantify any endogenous phycotoxins. Results were normalized to ng toxin per gram SPATT resin per day.

A subsample of each extract was also analyzed after being spiked with a multi-toxin solution (final concentration of 5 µg/L per phycotoxin) to determine relative signal suppression or enhancement due to matrix effects. Results from the spiked SPATT extracts were compared to a 5 µg/L multi-toxin standard in 100% methanol. Possible signal enhancement or suppression, introduced by the sample matrices, was evaluated using the equation [41] $Matrix\ Effect\ (\%) = 100 \times \frac{spiked\ extract\ peak\ area}{spiked\ standard\ peak\ area}$. For extracts in which endogenous compounds were already present before spiking, percent suppression or enhancement was calculated as $\frac{\mu g\ measured\ in\ spiked\ sample}{(\mu g\ endogenous\ toxin + \mu g\ toxin\ added)} \times 100$. KmTx 3 and GDA were not included in the spiking experiment due to the limited availability of purified material.

Author Contributions: Conceptualization, M.D.O., C.R.M., and J.L.S.; Methodology, M.D.O., C.R.M., and J.L.S.; Validation, M.D.O., A.R.P., and J.L.S.; Formal analysis, M.D.O. and J.L.S.; Resources, J.L.S., and A.R.P.; Writing—original draft preparation, M.D.O.; Writing—review and editing, J.L.S., C.R.M., and A.R.P.; Project administration, J.L.S.; Funding acquisition, J.L.S. and A.R.P. All authors have read and agreed to the published version of the manuscript.

Funding: This research was funded by NOAA Sea Grant Aquaculture Research Program, grant number NA14OAR4170093 to J.L.S. This work was also funded in part by a grant from NOAA-NOS-NCCOS-2012-2002987 to A.R.P.

Acknowledgments: The authors would like to thank Marta Sanderson (VIMS) for her valuable assistance. Goniiodomin A used for this study was purified from *Alexandrium monilatum* by Constance and Tom Harris and provided by Kimberly Reece (VIMS). This paper is Contribution No.3903 of the Virginia Institute of Marine Science, College of William & Mary, No.5851 from the University of Maryland Center for Environmental Science, and No.20-007 from the Institute of Marine and Environmental Technology.

Conflicts of Interest: The authors declare no conflict of interest. The funders had no role in the design of the study, in the collection, analyses, or interpretation of data, in the writing of the manuscript, or in the decision to publish the results.

References

1. Landsberg, J.H. The Effects of Harmful Algal Blooms on Aquatic Organisms. *Rev. Fish. Sci.* **2002**, *10*, 113–390. [[CrossRef](#)]
2. Landsberg, J.; Van Dolah, F.; Doucette, G. Marine and Estuarine Harmful Algal Blooms: Impacts on Human and Animal Health. In *Oceans and Health: Pathogens in the Marine Environment*; Belkin, S., Colwell, R.R., Eds.; Springer: Boston, MA, USA, 2005; pp. 165–215. [[CrossRef](#)]
3. Visciano, P.; Schirone, M.; Berti, M.; Milandri, A.; Tofalo, R.; Suzzi, G. Marine Biotoxins: Occurrence, Toxicity, Regulatory Limits and Reference Methods. *Front. Microbiol.* **2016**, *7*, 390. [[CrossRef](#)]
4. Miller, M.A.; Kudela, R.M.; Mekebri, A.; Crane, D.; Oates, S.C.; Tinker, M.T.; Staedler, M.; Miller, W.A.; Toy-Choutka, S.; Dominik, C.; et al. Evidence for a Novel Marine Harmful Algal Bloom: Cyanotoxin (Microcystin) Transfer from Land to Sea Otters. *PLoS ONE* **2010**, *5*, e12576. [[CrossRef](#)] [[PubMed](#)]
5. Falconer, I.R. An Overview of problems caused by toxic blue–green algae (cyanobacteria) in drinking and recreational water. *Environ. Toxicol.* **1999**, *14*, 5–12. [[CrossRef](#)]
6. Pierce, R.H.; Henry, M.S. Harmful algal toxins of the Florida red tide (*Karenia brevis*): Natural chemical stressors in South Florida coastal ecosystems. *Ecotoxicology* **2008**, *17*, 623–631. [[CrossRef](#)] [[PubMed](#)]
7. Anderson, D.M.; Glibert, P.M.; Burkholder, J.M. Harmful algal blooms and eutrophication: Nutrient sources, composition, and consequences. *Estuaries* **2002**, *25*, 704–726. [[CrossRef](#)]
8. Hallegraeff, G.M. Ocean climate change, phytoplankton community responses, and harmful algal blooms: A formidable predictive challenge. *J. Phycol.* **2010**, *46*, 220–235. [[CrossRef](#)]
9. Van Dolah, F.M. Marine algal toxins: Origins, health effects, and their increased occurrence. *Environ. Health Perspect.* **2000**, *108*, 133–141. [[CrossRef](#)]

10. Fire, S.E.; Wang, Z.; Byrd, M.; Whitehead, H.R.; Paternoster, J.; Morton, S.L. Co-occurrence of multiple classes of harmful algal toxins in bottlenose dolphins (*Tursiops truncatus*) stranding during an unusual mortality event in Texas, USA. *Harmful Algae* **2011**, *10*, 330–336. [[CrossRef](#)]
11. Fux, E.; Biré, R.; Hess, P. Comparative accumulation and composition of lipophilic marine biotoxins in passive samplers and in mussels (*M. edulis*) on the West Coast of Ireland. *Harmful Algae* **2009**, *8*, 523–537. [[CrossRef](#)]
12. Garcia, C.; Mardones, P.; Sfeir, A.; Lagos, N. Simultaneous presence of Paralytic and Diarrhetic Shellfish Poisoning toxins in *Mytilus chilensis* samples collected in the Chiloe Island, Austral Chilean Fjords. *Biol. Res.* **2004**, *37*, 721–731. [[CrossRef](#)] [[PubMed](#)]
13. Hattenrath-Lehmann, T.K.; Marcoval, M.A.; Berry, D.L.; Fire, S.E.; Wang, Z.; Morton, S.L.; Gobler, C.J. The emergence of *Dinophysis acuminata* blooms and DSP toxins in shellfish in New York waters. *Harmful Algae* **2013**, *26*, 33–44. [[CrossRef](#)]
14. Jester, R.; Lefebvre, K.; Langlois, G.; Vigilant, V.; Baugh, K.; Silver, M.W. A shift in the dominant toxin-producing algal species in central California alters phycotoxins in food webs. *Harmful Algae* **2009**, *8*, 291–298. [[CrossRef](#)]
15. Paerl, H.; Joyner, J.; Joyner, A.; Arthur, K.; Paul, V.; O’Neil, J.; Heil, C. Co-occurrence of dinoflagellate and cyanobacterial harmful algal blooms in southwest Florida coastal waters: Dual nutrient (N and P) input controls. *Mar. Ecol. Prog. Ser.* **2008**, *371*, 143–153. [[CrossRef](#)]
16. Peacock, M.B.; Gobble, C.M.; Senn, D.B.; Cloern, J.E.; Kudela, R.M. Blurred lines: Multiple freshwater and marine algal toxins at the land-sea interface of San Francisco Bay, California. *Harmful Algae* **2018**, *73*, 138–147. [[CrossRef](#)] [[PubMed](#)]
17. Gobble, C.M.; Kudela, R.M. Detection of persistent microcystin toxins at the land–sea interface in Monterey Bay, California. *Harmful Algae* **2014**, *39*, 146–153. [[CrossRef](#)]
18. Chen, J.; Gao, L.; Li, Z.; Wang, S.; Li, J.; Cao, W.; Sun, C.; Zheng, L.; Wang, X. Simultaneous screening for lipophilic and hydrophilic toxins in marine harmful algae using a serially coupled reversed-phase and hydrophilic interaction liquid chromatography separation system with high-resolution mass spectrometry. *Anal. Chim. Acta* **2016**, *914*, 117–126. [[CrossRef](#)]
19. Dahlmann, J.; Budakowski, W.R.; Luckas, B. Liquid chromatography–electrospray ionisation-mass spectrometry based method for the simultaneous determination of algal and cyanobacterial toxins in phytoplankton from marine waters and lakes followed by tentative structural elucidation of microcystins. *J. Chromatogr. A* **2003**, *994*, 45–57. [[CrossRef](#)]
20. Rodríguez, I.; Alfonso, A.; González-Jartín, J.M.; Vieytes, M.R.; Botana, L.M. A single run UPLC-MS/MS method for detection of all EU-regulated marine toxins. *Talanta* **2018**, *189*, 622–628. [[CrossRef](#)]
21. Zeng, Z.; McCarron, P.; Herrenknecht, C.; Sibat, M.; Amzil, Z.; Cole, R.B.; Hess, P. High resolution mass spectrometry for quantitative analysis and untargeted screening of algal toxins in mussels and passive samplers. *J. Chromatogr. A* **2015**, *1416*, 10–21. [[CrossRef](#)]
22. Mallet, C.; Botch-Jones, S. Illicit Drug Analysis Using Two-Dimension Liquid Chromatography/Tandem Mass Spectrometry. *J. Anal. Toxicol.* **2016**, *40*, 617–627. [[CrossRef](#)] [[PubMed](#)]
23. Fux, E.; Marcaillou, C.; Mondeguer, F.; Biré, R.; Hess, P. Field and mesocosm trials on passive sampling for the study of adsorption and desorption behaviour of lipophilic toxins with a focus on OA and DTX1. *Harmful Algae* **2008**, *7*, 574–583. [[CrossRef](#)]
24. Kudela, R.M. Characterization and deployment of Solid Phase Adsorption Toxin Tracking (SPATT) resin for monitoring of microcystins in fresh and saltwater. *Harmful Algae* **2011**, *11*, 117–125. [[CrossRef](#)]
25. Hattenrath-Lehmann, T.K.; Lusty, M.W.; Wallace, R.B.; Haynes, B.; Wang, Z.; Broadwater, M.; Deeds, J.R.; Morton, S.L.; Hastback, W.; Porter, L.; et al. Evaluation of Rapid, Early Warning Approaches to Track Shellfish Toxins Associated with *Dinophysis* and *Alexandrium* Blooms. *Mar. Drugs* **2018**, *16*, 28. [[CrossRef](#)] [[PubMed](#)]
26. Lane, J.Q.; Roddam, C.M.; Langlois, G.W.; Kudela, R.M. Application of Solid Phase Adsorption Toxin Tracking (SPATT) for field detection of the hydrophilic phycotoxins domoic acid and saxitoxin in coastal California. *Limnol. Oceanogr. Methods* **2010**, *8*, 645–660. [[CrossRef](#)]
27. MacKenzie, L.A. In situ passive solid-phase adsorption of micro-algal biotoxins as a monitoring tool. *Curr. Opin. Biotechnol.* **2010**, *21*, 326–331. [[CrossRef](#)]
28. Marine Biotoxins. *FAO Food and Nutrition Paper 80*; Food and Agriculture Organization of the United Nations: Rome, Italy, 2004.

29. Pease, S.K.D. *Alexandrium Monilatum* in the Lower Chesapeake Bay: Sediment Cyst Distribution and Potential Health Impacts on *Crassostrea Virginica*. Master's Thesis, Virginia Institute of Marine Science, Gloucester Point, VA, USA, 2016. [[CrossRef](#)]
30. Suzuki, T.; Beuzenberg, V.; MacKenzie, L.; Quilliam, M. Liquid chromatography-mass spectrometry of spiroketal stereoisomers of pectenotoxins and the analysis of novel pectenotoxin isomers in the toxic dinoflagellate *Dinophysis acuta* from New Zealand. *J. Chromatogr. A* **2003**, *992*, 141–150. [[CrossRef](#)]
31. Gerssen, A.; Mulder, P.; McElhinney, M.A.; De Boer, J. Liquid chromatography–tandem mass spectrometry method for the detection of marine lipophilic toxins under alkaline conditions. *J. Chromatogr. A* **2009**, *1216*, 1421–1430. [[CrossRef](#)]
32. Xu, W.; Chen, Q.; Zhang, T.; Cai, Z.; Jia, X.; Xie, Q.; Ren, Y. Development and application of ultra performance liquid chromatography–electrospray ionization tandem triple quadrupole mass spectrometry for determination of seven microcystins in water samples. *Anal. Chim. Acta* **2008**, *626*, 28–36. [[CrossRef](#)]
33. Fux, E.; McMillan, D.; Biré, R.; Hess, P. Development of an ultra-performance liquid chromatography–mass spectrometry method for the detection of lipophilic marine toxins. *J. Chromatogr. A* **2007**, *1157*, 273–280. [[CrossRef](#)]
34. Orellana, G.; Van Meulebroek, L.; Van Vooren, S.; De Rijcke, M.; Vandegheuchte, M.; Janssen, C.R.; Vanhaecke, L. Quantification and profiling of lipophilic marine toxins in microalgae by UHPLC coupled to high-resolution orbitrap mass spectrometry. *Anal. Bioanal. Chem.* **2015**, *407*, 6345–6356. [[CrossRef](#)] [[PubMed](#)]
35. Krock, B.; Tillmann, U.; Wen, Y.; Hansen, P.J.; Larsen, T.O.; Andersen, A.J. Development of a LC-MS/MS method for the quantification of goniodomins A and B and its application to *Alexandrium pseudogonyaulax* strains and plankton field samples of Danish coastal waters. *Toxicon* **2018**, *155*, 51–60. [[CrossRef](#)] [[PubMed](#)]
36. Bachvaroff, T.R.; Adolf, J.E.; Squier, A.H.; Harvey, H.R.; Place, A.R. Characterization and quantification of karlotoxins by liquid chromatography–mass spectrometry. *Harmful Algae* **2008**, *7*, 473–484. [[CrossRef](#)]
37. Harris, C.M.; Reece, K.S.; Stec, D.F.; Scott, G.P.; Jones, W.M.; Hobbs, P.L.; Harris, T.M. The toxin goniodomin, produced by *Alexandrium* spp., is identical to goniodomin A. *Harmful Algae* **2020**, *92*, 101707. [[CrossRef](#)]
38. Gerssen, A.; Van Olst, E.H.W.; Mulder, P.P.J.; De Boer, J. In-house validation of a liquid chromatography tandem mass spectrometry method for the analysis of lipophilic marine toxins in shellfish using matrix-matched calibration. *Anal. Bioanal. Chem.* **2010**, *397*, 3079–3088. [[CrossRef](#)]
39. Blay, P.; Hui, J.P.M.; Chang, J.; Melanson, J. Screening for multiple classes of marine biotoxins by liquid chromatography–high-resolution mass spectrometry. *Anal. Bioanal. Chem.* **2011**, *400*, 577–585. [[CrossRef](#)]
40. Bosch-Orea, C.; Sanchís, J.; Farré, M.; Barceló, J. Analysis of lipophilic marine biotoxins by liquid chromatography coupled with high-resolution mass spectrometry in seawater from the Catalan Coast. *Anal. Bioanal. Chem.* **2017**, *409*, 5451–5462. [[CrossRef](#)]
41. Gosetti, F.; Mazzucco, E.; Zampieri, D.; Gennaro, M.C. Signal suppression/enhancement in high-performance liquid chromatography tandem mass spectrometry. *J. Chromatogr. A* **2010**, *1217*, 3929–3937. [[CrossRef](#)]

