



Tree of motility A proposed history of motility systems in the tree of life

Author	Makoto Miyata, Robert C. Robinson, Taro Q. P. Uyeda, Yoshihiro Fukumori, Shun ichi Fukushima, Shin Haruta, Michio Homma, Kazuo Inaba, Masahiro Ito, Chikara Kaito, Kentaro Kato, Tsuyoshi Kenri, Yoshiaki Kinoshita, Seiji Kojima, Tohru Minamino, Hiroyuki Mori, Shuichi Nakamura, Daisuke Nakane, Koji Nakayama, Masayoshi Nishiyama, Satoshi Shibata, Katsuya Shimabukuro, Masatada Tamakoshi, Azuma Taoka, Yosuke Tashiro, Isil Tulum, Hirofumi Wada, Ken ichi Wakabayashi
journal or publication title	Genes to Cells
volume	25
number	1
page range	6-21
year	2020-01-19
Publisher	Molecular Biology Society of Japan John Wiley & Sons Australia, Ltd
Rights	(C) 2020 The Author(s)
Author's flag	publisher
URL	http://id.nii.ac.jp/1394/00001267/

doi: [info:doi/10.1111/gtc.12737](https://doi.org/10.1111/gtc.12737)

Tree of motility – A proposed history of motility systems in the tree of life

Makoto Miyata^{1,2}  | Robert C. Robinson^{3,4}  | Taro Q. P. Uyeda⁵  |
Yoshihiro Fukumori^{6,7} | Shun-ichi Fukushima⁸ | Shin Haruta⁸ | Michio Homma⁹  |
Kazuo Inaba¹⁰ | Masahiro Ito¹¹ | Chikara Kaito¹² | Kentaro Kato¹³ |
Tsuyoshi Kenri¹⁴ | Yoshiaki Kinoshita¹⁵  | Seiji Kojima⁹ | Tohru Minamino¹⁶ |
Hiroyuki Mori¹⁷ | Shuichi Nakamura¹⁸ | Daisuke Nakane¹⁹ | Koji Nakayama²⁰ |
Masayoshi Nishiyama²¹  | Satoshi Shibata²² | Katsuya Shimabukuro²³ |
Masatada Tamakoshi²⁴ | Azuma Taoka^{6,7} | Yosuke Tashiro²⁵ | Isil Tulum²⁶ |
Hirofumi Wada²⁷ | Ken-ichi Wakabayashi²⁸

¹Department of Biology, Graduate School of Science, Osaka City University, Osaka, Japan

²The OCU Advanced Research Institute for Natural Science and Technology (OCARINA), Osaka City University, Osaka, Japan

³Research Institute for Interdisciplinary Science, Okayama University, Okayama, Japan

⁴School of Biomolecular Science and Engineering (BSE), Vidyasirimedhi Institute of Science and Technology (VISTEC), Rayong, Thailand

⁵Department of Physics, Faculty of Science and Technology, Waseda University, Tokyo, Japan

⁶Faculty of Natural System, Institute of Science and Engineering, Kanazawa University, Kanazawa, Japan

⁷WPI Nano Life Science Institute (WPI-NanoLSI), Kanazawa University, Kakuma-machi, Kanazawa, Japan

⁸Department of Biological Sciences, Graduate School of Science and Engineering, Tokyo Metropolitan University, Tokyo, Japan

⁹Division of Biological Science, Graduate School of Science, Nagoya University, Nagoya, Japan

¹⁰Shimoda Marine Research Center, University of Tsukuba, Shizuoka, Japan

¹¹Graduate School of Life Sciences, Toyo University, Gunma, Japan

¹²Laboratory of Microbiology, Graduate School of Pharmaceutical Sciences, The University of Tokyo, Tokyo, Japan

¹³Laboratory of Sustainable Animal Environment, Graduate School of Agricultural Science, Tohoku University, Miyagi, Japan

¹⁴Laboratory of Mycoplasmas and Haemophilus, Department of Bacteriology II, National Institute of Infectious Diseases, Tokyo, Japan

¹⁵Department of Physics, Oxford University, Oxford, UK

¹⁶Graduate School of Frontier Biosciences, Osaka University, Osaka, Japan

¹⁷Institute for Frontier Life and Medical Sciences, Kyoto University, Kyoto, Japan

¹⁸Department of Applied Physics, Graduate School of Engineering, Tohoku University, Miyagi, Japan

¹⁹Department of Physics, Gakushuin University, Tokyo, Japan

²⁰Department of Microbiology and Oral Infection, Graduate School of Biomedical Sciences, Nagasaki University, Nagasaki, Japan

²¹Department of Physics, Faculty of Science and Engineering, Kindai University, Osaka, Japan

²²Molecular Cryo-Electron Microscopy Unit, Okinawa Institute of Science and Technology Graduate University, Okinawa, Japan

²³Department of Chemical and Biological Engineering, National Institute of Technology, Ube College, Yamaguchi, Japan

²⁴Department of Molecular Biology, Tokyo University of Pharmacy and Life Sciences, Tokyo, Japan

²⁵Department of Engineering, Graduate School of Integrated Science and Technology, Shizuoka University, Shizuoka, Japan

²⁶Department of Botany, Faculty of Science, Istanbul University, Istanbul, Turkey

²⁷Department of Physics, Graduate School of Science and Engineering, Ritsumeikan University, Shiga, Japan

²⁸Laboratory for Chemistry and Life Science, Institute of Innovative Research, Tokyo Institute of Technology, Kanagawa, Japan

This is an open access article under the terms of the Creative Commons Attribution License, which permits use, distribution and reproduction in any medium, provided the original work is properly cited.

© 2020 The Authors. *Genes to Cells* published by Molecular Biology Society of Japan and John Wiley & Sons Australia, Ltd

Correspondence

Makoto Miyata, Department of Biology, Graduate School of Science, Osaka City University, Osaka 558-8585, Japan.
Email: miyata@sci.osaka-cu.ac.jp

Robert C. Robinson, Research Institute for Interdisciplinary Science, Okayama University, Okayama 700-8530, Japan.
Email: br.okayama.u@gmail.com

Taro Q. P. Uyeda
Department of Physics, Faculty of Science and Technology, Waseda University, Tokyo 169-8555, Japan.
Email: t-uyeda@waseda.jp

Funding information

Japan Society for the Promotion of Science, Grant/Award Number: JP17H06082 and JP24117001

Communicated by: Eisuke Nishida

Abstract

Motility often plays a decisive role in the survival of species. Five systems of motility have been studied in depth: those propelled by bacterial flagella, eukaryotic actin polymerization and the eukaryotic motor proteins myosin, kinesin and dynein. However, many organisms exhibit surprisingly diverse motilities, and advances in genomics, molecular biology and imaging have showed that those motilities have inherently independent mechanisms. This makes defining the breadth of motility nontrivial, because novel motilities may be driven by unknown mechanisms. Here, we classify the known motilities based on the unique classes of movement-producing protein architectures. Based on this criterion, the current total of independent motility systems stands at 18 types. In this perspective, we discuss these modes of motility relative to the latest phylogenetic Tree of Life and propose a history of motility. During the ~4 billion years since the emergence of life, motility arose in Bacteria with flagella and pili, and in Archaea with archaeella. Newer modes of motility became possible in Eukarya with changes to the cell envelope. Presence or absence of a peptidoglycan layer, the acquisition of robust membrane dynamics, the enlargement of cells and environmental opportunities likely provided the context for the (co)evolution of novel types of motility.

KEYWORDS

appendage, cytoskeleton, flagella, membrane remodeling, Mollicutes, motor protein, peptidoglycan, three domains

1 | INTRODUCTION

Rapidly accumulating genomic data are changing our approaches to biology and our perspectives of the living organisms that inhabit this planet (Figure 1). According to the latest data analyses, life on the Earth can be divided into two or three groups (Brown et al., 2015; Castelle & Banfield, 2018; Hug et al., 2016; Williams, Foster, Cox, & Embley, 2013): Bacteria, which includes the subgroup of Candidate Phyla Radiation (CPR), species whose representatives have been confirmed to exist by microscopy or metagenomics but have yet to be cultured (Williams et al., 2013); Archaea; and Eukarya, a small group branching from Archaea to which *Homo sapiens* belongs. Archaea and Eukarya are grouped together in the two Domain hypothesis (Williams et al., 2013). The accumulating genomic data are useful to map the appearance of novel biological functions by tracing the presence of the encoding genes relative to branch points in the Tree of Life. In this perspective, we focus on the emergence of motility systems and propose a history of motility.

2 | EIGHTEEN MOTILITY SYSTEMS

From the time of Leeuwenhoek, 350 years ago, people have been fascinated by motility, because movement is one

defining feature of life (Berg, 2004). Motility can be a determinant for survival of species, by which living organisms obtain nutrients, escape from toxins and predators, and exchange genetic information through mating. It also plays critical roles in development and other physiological activities such as immune response and wound healing in multicellular organisms. Therefore, understanding the mechanisms of motility may provide useful information for controlling infectious microorganisms and benefit agriculture and medicine. Moreover, learning how protein motility machineries work may provide clues to develop artificial nanoscale actuators.

Today, the acquisition of genomic data coupled with advances in technologies in various fields such as genetic manipulation, structural analysis, imaging and single molecule measurements has enabled in-depth investigation into motility. As a result, the mechanisms of many types of motility, which were previously regarded as mysteries, are now known at the molecular level. Although the types of locomotion of organisms are diverse, motility at the molecular level can be currently characterized as 18 distinct types of mechanism (Figure 1, Table 1). Here, "Motility" is defined as the ability of individual organisms or cells to convert chemical energy to locomotion of the whole organism or cell by using a dedicated motor system. Various kinds of criteria for classifying motion mechanisms are possible. We define a unique class of motility mechanism to have distinct structure of the force-producing

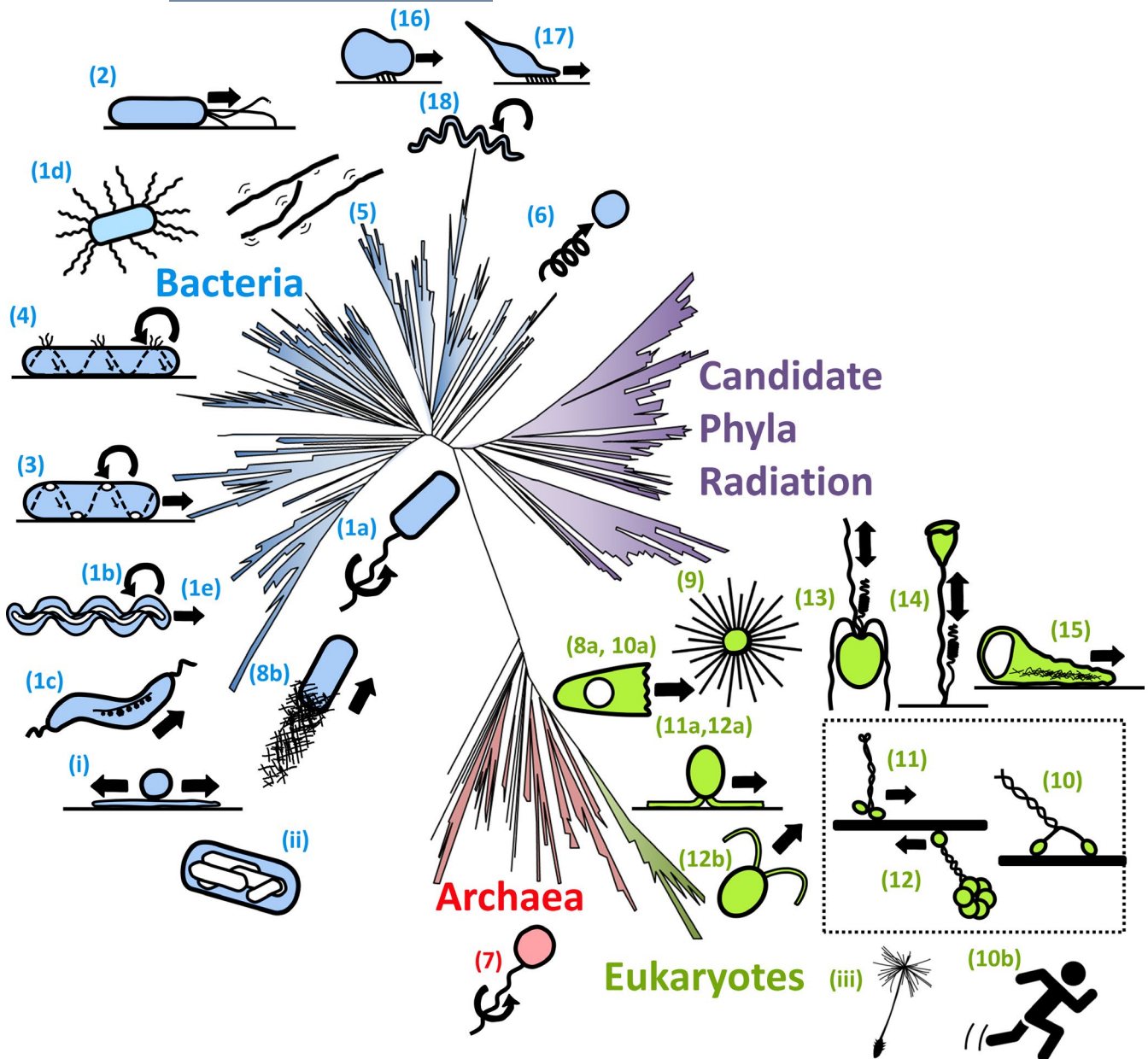


FIGURE 1 Various types of motility systems. Cartoons of those systems are listed according to the order in the text and roughly assigned to the relative positions in Tree of Life (Hug et al. 2016; Castelle & Banfield 2018). (1a) bacterial flagellar swimming, (1b) spirochetes flagellar swimming, (1c) magnetotactic bacterial flagellar swimming, (1d) bacterial flagellar swarming, (1e) *Leptospira* crawling motility, (2) bacterial pili motility, (3) *Myxococcus xanthus* adventurous (A) motility, (4) *Bacteroidetes* gliding, (5) *Chloroflexus aggregans* surface motility, (6) *Synechococcus* nonflagellar swimming, (7) archaella swimming, (8a) amoeba motility based on actin polymerization, (9) heliozoa motility based on microtubule depolymerization, (10) myosin sliding, (11) kinesin sliding, (12) dynein sliding, (10a) amoeba motility driven by contraction of cortical actin–myosin. (10b) animal muscle contraction, (11a, 12a) flagellar surface motility (FSM), (12b) flagellar swimming, (13) haptonemal contraction, (14) spasmoneme contraction, (15) amoeboid motility of nematode sperm, (8b) actin-based comet tail bacterial motility, (16) *Mycoplasma mobile* gliding, (17) *Mycoplasma pneumoniae* gliding, (18) *Spiroplasma* swimming, (i) bacterial sliding, (ii) gas vesicle, (iii) dandelion seed. Refer to Table 1 for more details. The three eukaryotic conventional motor proteins are shown in the dotted box

motor from any motor of another class of motility mechanism. According to these criteria, molecular movements such as those produced by rotary ATPases, helicases, DNA polymerases are not included as motility, because they do not propel a cell or organism. Similarly, movement of intracellular

membrane vesicles driven by kinesin or dynein also does not qualify as motility. The current number of 18 types of motility is unlikely to be the final figure. In particular, CPR has yet to be explored from the motility perspective because of the intractability of cultivation, which leaves a systematic gap that

TABLE 1 Characterization of motility systems

Type	Name	Variations	Representatives	Key proteins	Energy source	Distribution	Year	References
1	Bacterial flagella swimming	Typical flagella	(a) <i>Escherichia coli</i>	FliC, FliG, MotA, MotB	Proton motive force	Widespread in Bacteria	1974	Berg (1974), Larsen et al. (1974), Silverman and Simon (1974)
		Periplasmic flagella	(b) <i>Borrelia burgdorferi</i> , <i>Leptospira interrogans</i>	FlaB, FliG, MotA, MotB		Phylum Spirochaetes	1979	Li et al. (2000), Charon and Goldstein (2002), Charon et al. (2012), Takabe et al. (2017)
	Spirochetes swimming	Magnetotactic behavior	(c) <i>Magnetospirillum magneticum</i> AMB-1	FliC, FliG, MotA, MotB		Widespread in Bacteria	1975	Blakemore (1975), Blakemore, Maratea, and Wolfe (1979), Uebe and Schuler (2016)
		Swarming motility	(d) <i>Proteus mirabilis</i> , <i>Vibrio parahaemolyticus</i> (lateral flagella)	FliC, FliG, FliL, MotA, MotB		Widespread in Bacteria	1885	Henrichsen (1972)
		Crawling motility	(e) <i>Leptospira interrogans</i>	FlaB, FliG, MotA, MotB		<i>Leptospira</i>	1974	Cox and Twigg (1974), Tahara et al. (2018)
2	Bacterial pili motility		<i>Pseudomonas aeruginosa</i> , <i>Neisseria gonorrhoeae</i> , <i>Myxococcus xanthus</i> S motility	PilA, PilB, PilT	ATP	Widespread in Bacteria	1961	Lautrop (1961), Bradley (1972)
			<i>Synechocystis</i> sp. PCC6803					
			<i>Myxococcus xanthus</i>	AgRQS, GltA-K	Proton motive force	Class Gammaproteobacteria		Nan et al. (2014), Agrebi et al. (2015), Mercier and Mignot (2016)
4	Bacterial gliding		<i>Flavobacterium johnsoniae</i>	SprB, GldBD, GldH-N	Proton motive force	Phylum Bacteroidetes	1972	Pate and Chang (1979), Lapidus and Berg (1982), McBride and Nakane (2015)
			<i>Chloroflexus aurantiacus</i> , <i>Chloroflexus aggregans</i>	Unknown	Unknown	Phylum Chloroflexi	1995	Hanada, Hiraishi, Shimada, and Matsuura (1995), Hanada et al. (2002), Fukushima et al. (2016)
6	Bacterial swimming		<i>Synechococcus</i>	SwmA, SwmB	Unknown	<i>Synechococcus</i>	1985	Waterbury et al. (1985); Brahmsha (1999)
7	Archaea		<i>Halobacterium salinarum</i>	FlaH, FlaI, FlaJ	ATP	Phylum Euryarchaeota, Phylum Crenarchaeota	1984	Alam and Oesterhelt (1984), Jarrell and Albers (2012), Albers and Jarrell (2015), Chaudhury et al. (2016)

(Continues)

TABLE 1 (Continued)

Type	Name	Variations	Representatives	Key proteins	Energy source	Distribution	Year	References
11	Kinesin sliding-based motility	Vesicle transport (not motility) (a) Flagellar surface motility	Wide range of eukaryotes <i>Chlamydomonas reinhardtii</i>	Kinesin, Tubulin	ATP	Widespread in eukaryotes Protist, Animal	1985 1979	Bloodgood, Leffler, and Bojczuk (1979), Vale, Reese, and Sheetz (1985), Shih et al. (2013) Bloodgood et al. (1979), Shih et al. (2013)
12	Dynein sliding-based motility	(b) Eukaryotic ciliary and flagellar swimming (a) Flagellar surface motility	Wide range of eukaryotes other than Plantae <i>Chlamydomonas reinhardtii</i>	Dynein, Tubulin	ATP	Widespread in eukaryotes other than Plantae	1972	Gibbons and Gibbons (1972), Gibbons and Fronk (1972), Iyer et al. (2004), Shih et al. (2013)
13	Haptonema coiling		<i>Chlamydomonas reinhardtii</i> <i>Chrysochromulina acantha</i> , <i>Chrysochromulina simplex</i> , <i>Chrysochromulina hirta</i>	Tubulin	Ca ²⁺ binding	Class Haptophyceae	1955	Bloodgood et al. (1979), Shih et al. (2013) Parke et al. (1955), Greyson et al. (1993), Kawachi and Inouye (1994)
14	Spasmoneme coiling		<i>Vorticella convallaria</i> , <i>Zoothamnium geniculatum</i> , <i>Carchesium polypinum</i>	Spasmin	Ca ²⁺ binding	Subclass Peritrichia	1958	Hoffman-Berling (1958), Amos et al. (1975)
15	Amoeboid motility of nematode sperm		<i>Caenorhabditis elegans</i> , <i>Ascaris suum</i>	Major sperm protein (MSP)	ATP	Phylum Nematoda	1979	Roberts and Stewart (1997)
16	<i>Mycoplasma</i> gliding		<i>Mycoplasma mobile</i>	Gli349, Gli521	ATP	Class Mollicutes	1977	Miyata (2010), Miyata and Hamaguchi (2016b)
17	<i>Mycoplasma</i> gliding		<i>Mycoplasma pneumoniae</i>	PI adhesin, HMW2	ATP	Class Mollicutes	1968	Bredt (1968), Miyata and Hamaguchi (2016a), Mizutani and Miyata (2019)
18	<i>Spiroplasma</i> swimming		<i>Spiroplasma melliferum</i>	Fib, MreB	Unknown	Class Mollicutes	1973	Wada and Netz (2009), Liu et al. (2017)
<i>Motility not driven by dedicated motor system</i>								
(i)	Sliding motility		<i>Bacillus subtilis</i>	Surfactin	Surface tension	Phylum Firmicutes, Phylum Actinobacteria	1972	Martinez, Torello, and Kolter (1999)
(ii)	Gas vesicle floating		<i>Halobacterium salinarum</i> , <i>Anabaena flos-aquae</i> , <i>Serratia</i> sp.	GvpA	Buoyant force	Photosynthetic bacteria, Haloarchaea, Heterotrophic bacteria	1895	Pfeifer (2012), Tashiro et al. (2016)
(iii)	Plant seed flying		Dandelion, maple	NA	Air flow	Widespread in higher plants	NA	

likely conceals new mechanisms (Castelle & Banfield, 2018; Hug et al., 2016). In addition, there are examples of microorganisms that move immediately after isolation, yet become static after culture, which may hinder discovery of additional types of motility (Jishage & Ishihama, 1997). However, despite the advancing technology environment, no new type of motility has been discovered for more than ten years. Thus, the 18 types of motility mechanisms account for a substantial proportion of movement of observable organisms on Earth.

The 18 types of motility are numerous when compared to the five conventional types of motility: those driven by bacterial flagella; by the eukaryotic motor proteins myosin, dynein or kinesin; or by actin polymerization. Nonetheless, taking into account that the evolution of life has been ongoing for ~4 billion years, it appears that novel motility mechanisms only sporadically evolve. It is also noteworthy that different modes of motility have evolved, considering that other vital processes, such as the mechanisms for ATP synthesis (Gogarten & Taiz, 1992) and protein synthesis (Yao & O'Donnell, 2016), have retained core machineries. This is probably because motility is established by the interaction of the organism with its environment. Organisms and environments have been constantly changing during the ~4 billion years of life. Conditions underwater, on a wet surface, in the bacterial flora, in hard soil or in tissues of hosts likely required different mechanisms for effective locomotion. Clear examples of adaptation to changing conditions are observed in host–pathogen interactions (see the section on class Mollicutes below). The appearance of a novel motility of a pathogen in a host would only be possible, at the earliest, during the emergence of the host. Furthermore, the architecture of a cellular motility machine needs to couple the motor output with the physical properties of cell envelope in order to produce sufficient force to propel the whole-cell body via interactions with its environment. This equation has been solved in different ways by organisms in various branches of the Tree of Life and appears to be critically dependent on the nature of the cell envelope. The order of events of how a mechanism of motility evolved, and how it may have ceased to function to be replaced by a new mode of motility, has yet to be temporally delineated with respect to the evolution of life on Earth. In the following sections, we propose a history of movement of life on Earth, which differs from the Tree of Life (Castelle & Banfield, 2018; Hug et al., 2016), in accordance with the order in which motility mechanisms arose, based on the latest understanding from the multiple types of motility and genomic data.

3 | BACTERIA

Many Bacteria move based on manipulating external appendages, by swimming using flagella (Figure 1; type 1a) or by the shortening of pili (Figure 1; type 2) (Berg, 1974, 2003; Larsen, Reader, Kort, Tso, & Adler, 1974; Lautrop, 1961; Mattick, 2002; Silverman & Simon, 1974). Motilities that depend on

flagella and pili are widely distributed in many systematically separated phyla and their broad distributions suggest that these types of motility are robust and adaptable (Berry & Pelicic, 2015; Pallen, Penn, & Chaudhuri, 2005). Indeed, there are many variations in flagella-powered swimming, such as spirochetes swimming (Figure 1; type 1b) (Charon & Goldstein, 2002; Li, Motaleb, Sal, Goldstein, & Charon, 2000), surface movement (Figure 1; type 1d) (Harshey & Partridge, 2015; Kearns, 2013; Patrick & Kearns, 2012) called swarming and swimming in response to geomagnetism sensed by magnetotactic bacteria (Figure 1; type 1c) (Blakemore, 1975; Uebe & Schuler, 2016). In addition, differences are observed in the ions used for torque generation as adaptations to the environment (Ito & Takahashi, 2017).

It is thought that these motility mechanisms are widely distributed because flagella and pili existed from an early stage of Bacteria evolution or were spread due to horizontal gene propagation, scenarios that are difficult to distinguish (Pallen & Matzke, 2006; Pallen et al., 2005). Probably, both routes occurred. However, it is worth noting that flagellar movement is also observed in the deeply branching Bacteria, such as *Aquificaceae* (Takekawa et al., 2015) and *Thermotogae* (Liu & Ochman, 2007). Bacterial flagella are held in the cell envelope at multiple places for high-speed motor rotation (Chang et al., 2016; Minamino & Imada, 2015; Minamino, Imada, & Namba, 2008). In *E. coli* and *Salmonella*, flagella interact with the cell envelope through three basal body rings (MS, L and P rings) and stators. Thus, one of the principles of motility mechanisms in single cells is the compatibility with the cell envelope architecture. Flagella and pili are complicated systems composed of many proteins and it is difficult to trace the nearest ancestors whose structures are similar but have different roles (Pallen & Matzke, 2006; Pallen et al., 2005). Similarities in constituent proteins suggest that the basal body that rotates flagella and the basal body that expands/contracts pili have the same molecular origin as the transporter that transfers proteins across a cell membrane (Minamino, 2014; Mulikidjanian, Makarova, Galperin, & Koonin, 2007; Rapoport, Li, & Park, 2017). Flagella and pili are equipped with protein transporting abilities, but there are many other protein transporting devices that have not evolved into motility machines. Thus, a flagella/pili-related transport device likely occurred in the earliest Bacteria, and this system was later duplicated and adapted to engender motility.

Some Bacteria show a specialized motility resulting from the movement of small structures on the surface of the cell, much smaller than the large appendages of flagella and pili. These bacteria travel in high-viscosity environments such as soil, microbial mats, host tissues and three-dimensional intergrowths. These new motilities likely evolved because of the excessive amount of force needed to move large appendages, such as flagella and pili, in these confined environments. This is the case for some Proteobacteria (Agrebi,

Wartel, Brochier-Armanet, & Mignot, 2015; Mercier & Mignot, 2016; Nan, McBride, Chen, Zusman, & Oster, 2014) typified by the A motility of *Myxococcus xanthus* (Figure 1; type 3) (Agrebi et al., 2015; Mercier & Mignot, 2016; Nan et al., 2014), the gliding motility of Bacteroidetes (Figure 1; type 4) (McBride & Nakane, 2015; Nakane, Sato, Wada, McBride, & Nakayama, 2013; Wada, Nakane, & Chen, 2013) represented by *Flavobacterium johnsoniae*, and the surface motion of thermophilic filamentous bacteria *Chloroflexus aggregans* classified as phylum Chloroflexi (Figure 1; type 5) (Fukushima, Morohoshi, Hanada, Matsuura, & Haruta, 2016; Hanada, Shimada, & Matsuura, 2002). Spirochete swimming is a variation of the flagellar swimming described above, but achieves a smooth motion by placing flagella inside the outer membrane, in the periplasmic space (Figure 1; type 1b) (Charon et al., 2012; Charon & Goldstein, 2002; Li et al., 2000; Takabe, Kawamoto, Tahara, Kudo, & Nakamura, 2017). The motility of *Myxococcus xanthus* (phylum Proteobacteria, Figure 1; type 3) and the gliding movement of *Flavobacterium johnsoniae* (phylum Bacteroidetes, Figure 1; type 4) are well studied. These two phyla are not systematically close in evolution, and as there is no significant amino acid sequence homology between the proteins producing the motility, it is probable that their motility systems occurred independently. However, it is interesting that both of these protein complexes transmit force to the substrate surfaces by moving a helix on the periphery of their respective bacterial cells, using membrane potential, electrochemical potential to be exact, as the energy source.

It has long been known that filamentous cyanobacteria perform surface motions, and that these movements result from type IV pili (Duggan, Gottardello, & Adams, 2007; Khayatan, Meeks, & Risser, 2015; Wilde & Mullineaux, 2015). Additionally, *Synechococcus*, a marine cyanobacteria, is known to swim at a speed of 25 $\mu\text{m/s}$ by a mechanism different to that of bacterial flagella (Figure 1; type 6) (Waterbury, Willey, Franks, Valois, & Watson, 1985). Formation of waves on the cyanobacteria surface is thought to push surrounding water backwards (Ehlers & Oster, 2012). These four types of motility (Figure 1; types 3–6) are limited to each phylum, suggesting that they arose relatively later in the evolution of Bacteria. Interestingly, all of these phylum-specific movements are found in Gram-negative bacteria. This may be due to the possibility to create new mechanisms in the periplasmic space specific to Gram-negative bacteria or that the Gram-positive bacteria peptidoglycan layer is more rigid and difficult to adapt for movement. In the evolution of bacterial motility, viscosity of surrounding media and interaction with environmental surfaces would have been critical factors. To this end, some bacterial species are equipped with dual flagellar systems, one used for

swimming (a constitutive polar flagellum) and the other used for swarming on the surfaces (inducible lateral flagella; McCarter, 2004). Viscosity appears to be sensed by the flagellar motor as the environmental load, and cells adjust the power output of the motor by changing the number of energy converting units (Lele, Hosu, & Berg, 2013; Minamino, Terahara, Kojima, & Namba, 2018; Nord et al., 2017). Environmental conditions are significant factors in a low Reynolds number world, in which small cells, such as bacteria, are influenced more by friction with surrounding subjects rather than the inertia caused by their masses.

In CPR genomes, genes homologous to those for bacterial flagella and pili are found, suggesting the wide distribution of these common motility systems (Nelson & Stegen, 2015). However, genes involved in other bacterial motility systems, such as pili-independent gliding, *Synechococcus* swimming and Mollicutes motility, are not found in the current CPR genomes. Discovery of novel, CPR-specific motilities will likely become possible only after those organisms are cultured.

4 | ARCHAEA

Many phyla of Archaea swim with “flagella” called archaella (Figure 1; type 7) (Jarrell & Albers, 2012). The structure of archaella has nothing in common with bacterial flagella besides the gross overall shape; rather, they share similarity in some protein components to, and likely evolved from, bacterial pili. Interestingly, other classes of motility identified in Bacteria (Figure 1; types 1–6) have not been found in Archaea to date. Thus, it appears that bacterial motility systems were not successfully transferred to Archaea even though some archaea inhabit common environments with bacteria. This may be related to the fact that Archaea do not have a peptidoglycan layer (Albers & Meyer, 2011; Daum et al., 2017), although most bacterial motility systems, including flagella (Minamino & Imada, 2015; Minamino et al., 2008) and pili (Shahapure, Driessen, Haurat, Albers, & Dame, 2014), depend mechanistically on anchoring to the peptidoglycan layer. This poses the question: How does the archaellum rotate without a peptidoglycan layer for support? It is anchored at a single position via a protein that binds to the pericellular S-layer (Banerjee et al., 2015), the outermost layer of Archaea that often consists of paracrystalline arrays of a single or small number of proteins or glycoproteins. In bacterial pili, an ATPase hexamer rotates at the base of the pilus, which is responsible for pili extension and retraction (Chang et al., 2016; McCallum, Tammam, Khan, Burrows, & Howell, 2017). This rotational property appears to have been adapted in archaella to be used for swimming. It is interesting that the Archaea swimming mode resembles the bacterial flagella swimming mode (Kinosita, Uchida, Nakane, & Nishizaka, 2016), because it likely evolved from pili that display a different mode of

motility. Probably, this is the result of the optimal motility format being dictated by physical factors such as cell size, viscosity of water, required swim speed, and protein stiffness (Magariyama et al., 1995; Wada & Netz, 2007). Thus, flagella and archaella are examples of convergent evolution, similar to the convergent evolution of the motilities of *Myxococcus xanthus* A and *Flavobacterium johnsoniae* arising from different machineries, as well as to the two types of gliding motility found in Mollicutes, discussed later (Miyata & Hamaguchi, 2016a, 2016b). To date, archaella are the sole identified motility system in archaea; however, we cannot rule out the existence of other systems, because the detailed analyses of archaea behavior started relatively recently in comparison with the studies of bacteria (Kinosita et al., 2016).

5 | EUKARYA

Archaea have a proteinaceous S-layer which likely lacks some of the mechanical strength of the bacterial peptidoglycan layer. It is speculated, from gene homology, that an Asgard-like archaeon acquired membrane dynamics and enlarged its cell and genome sizes to evolve to Eukarya (Akil & Robinson, 2018; Spang et al., 2015; Zaremba-Niedzwiedzka et al., 2017). Metagenome analyses have showed that Asgard archaea genomes, including Lokiarchaeota, contain potential genes for eukaryote-like membrane fusion, membrane distortion and secretion machineries (Spang et al., 2015; Zaremba-Niedzwiedzka et al., 2017). During the evolution of eukaryotes, cell enlargement and the availability of enhanced energy sources (from mitochondria, chloroplasts or phagocytosis) alleviated some of the constraints on protein machineries (Lane & Martin, 2010). In addition, because it became possible to support larger genomes, the expansion of the total DNA allowed for encoding of proteins for new functions. However, one ramification of increasing cell size during the archaea-to-eukaryote transition would be difficulty in moving using the existing motility mechanisms. Furthermore, concurrently with cell expansion, it became necessary to actively transport materials within the cytoplasm, something that could be left to diffusion in smaller cells (Koch, 1996).

In Bacteria, the process of diffusion is sufficient for mass transport for most substances. This situation is true for the bacterial genus *Thiomargarita*, whose diameter reaches 750 μm , because these giant bacteria are polynuclear and their cytoplasm is thin, which minimizes the distances and volumes for transport (Schulz, 2006). The movement of larger structures, such as the arrangement of peptidoglycan synthase (Busiek & Margolin, 2015), DNA distribution in plasmid partitioning (Popp & Robinson, 2011; Salje, Gayathri, & Löwe, 2010), and cell division, are performed in Bacteria by the polymerization and depolymerization of MreB, ParM and FtsZ, which share ancestors with eukaryotic actin and tubulin.

Asgard archaea, or early Eukarya, can be speculated to have used polymerization to organize cell membranes, membrane vesicles, cytoplasm and chromosomes (Makarova, Yutin, Bell, & Koonin, 2010; Spang et al., 2015; Wickstead & Gull, 2011; Zaremba-Niedzwiedzka et al., 2017). In particular, the movement of the membranes by actin polymerization, which is structurally related to MreB and ParM, led to the acquisition of a new motility, amoeboid movement (Figure 1; type 8a). Amoeboid motility is closely related to phagocytosis. The ability to internalize other cells increased the efficiency of food uptake when compared with energy-dependent uptake of molecular nutrients across the cell membrane from the dilute surrounding medium. A similar amoeboid motility is observed also for tubulin polymerization in order Heliozoa and class Heterotrichea.

More efficient transport systems using the cytoskeleton have evolved through developing “conventional” motor proteins, such as myosin, kinesin and dynein, which move along actin filaments and microtubules (Figure 1; types 10–12). Myosin and kinesin are related to each other, and moreover, all are classified to the P-loop NTPases. Although the prototypic motor protein cannot be traced from their extant structures, it should be emphasized that a number of non-motor proteins in their class, including translation elongation factors, helicases, proteasomes, are known to generate force. These proteins may be related to the conventional motor protein at the root of cellular evolution (Iyer, Leipe, Koonin, & Aravind, 2004; Kull, Vale, & Fletterick, 1998; Leipe, Wolf, Koonin, & Aravind, 2002; Vale & Milligan, 2000). The class II myosin that forms bipolar filaments emerged after the unconventional myosin had evolved as a transporter. Interaction of bipolar myosin II filaments and actin filaments enabled a new mode of motility; contraction. Contraction drives muscle force generation (Figure 1; type 10b) as well as contributing to amoeboid movement that is also dependent on the contraction of actin and myosin II underneath the cell membrane (Figure 1; type 10a) (Paluch & Raz, 2013; Wessels et al., 1988). Contraction also enabled efficient cytokinesis in cells by forming contractile rings (Uyeda & Nagasaki, 2004), aiding the development of multicellular organisms. In the similar way, the interactions of dynein with microtubules drive movements of eukaryotic flagella for swimming (Figure 1; type 12b) (Gibbons, 1963).

As many Eukarya are soft cells, movements within a cell can be transmitted to the outside. When this was advantageous for survival, new modes of motility had the opportunity to arise. The scenario that the movement of a transport system gave rise to a new motility can be observed in the form of protozoan flagella and cilia, called flagellar surface motility (FSM; Figure 1; types 11a,12a; Shih et al., 2013). This is the ability of the flagella and cilia to glide on a solid surface which is caused by the transport of membrane vesicles in flagella and cilia, that is, intraflagellar transport (IFT). In

this system, kinesin and dynein are directly involved in cell migration.

Some unicellular eukaryotes show other unique examples that transmit motion from inside of a eukaryotic cell to the exterior to produce atypical motilities. The haptonema (Figure 1; type 13) (Greyson, Green, & Leadbetter, 1993; Kawachi & Inouye, 1994; Nomura et al., 2019; Parke, Manton, & Clarke, 1955), a filiform structure in haptophytes, is rapidly coiled by mechanical stimuli through Ca^{2+} -dependent changes of microtubule configurations. A morphologically similar structure, the spasmoneme (Figure 1; type 14) (Amos, Routledge, & Yew, 1975; Hoffman-Berling, 1958), in peritrichous ciliates contracts by the structural changes of Ca^{2+} -binding protein spasmin in a microtubule-independent manner. Axopodia and stalk (Febvre-Chevalier & Febvre, 1992; Suzuki, Shigenaka, Watanabe, & Toyohara, 1980; Tilney & Porter, 1965) in heliozoans show rapid contractions caused by catastrophic microtubule breakdown. Heterotrichous ciliates use a combination of microtubules and actin-like filaments to create large deformations of their cell bodies for movement (Huang & Pitelka, 1973; Randall & Jackson, 1958; Tilney & Porter, 1965). In nematode sperm (Figure 1; type 15), the treadmill polymerization of the unique protein MSP drives forward its amoeboid cell body, in a manner similar to actin-driven amoeboid movement (Roberts & Stewart, 1997).

6 | ACTIN-BASED MOTILITY BY PARASITIC BACTERIA

The emergence of large Eukarya cells with flexible membranes and intracellular transport systems provided the opportunity for Bacteria to invade these environments (Carayol & Tran Van Nhieu, 2013; Dey & Bishai, 2014; LaRock, Chaudhary, & Miller, 2015; McFadden, 2014; Pizarro-Cerda, Kuhbacher, & Cossart, 2012). Such Bacteria often hijack membrane fusion, phagocytosis and cytoskeleton machineries of the host Eukarya. *Shigella* and *Listeria* enter the eukaryotic cells and induce actin polymerization of the host cell by presenting mimetics of the eukaryotic actin regulating proteins at one end of the Bacteria, forming an actin comet tail to move inside the host cell and spread to the neighboring host cells (Figure 1; type 8b) (Stevens, Galyov, & Stevens, 2006; Tilney & Portnoy, 1989; Yoshida et al., 2006).

7 | BACTERIAL MOLLICUTES

A small group of organisms, class Mollicutes, which has evolved from the phylum Firmicutes including *Bacillus* and *Clostridium*, have acquired three distinct motility mechanisms (Miyata & Hamaguchi, 2016a). These are the gliding motility (Bredt & Radestock, 1977; Miyata, 2010; Miyata &

Hamaguchi, 2016b) displayed by *Mycoplasma mobile*, which is a pathogen of freshwater fish, a second type of gliding motility (Figure 1; type 16) (Bredt, 1968; Miyata & Hamaguchi, 2016a) used by *Mycoplasma pneumoniae* in humans (Figure 1; type 17), and the swimming motility of *Spiroplasma* (Figure 1; type 18) (Cole, Tully, Popkin, & Bove, 1973; Liu et al., 2017; Shaevitz, Lee, & Fletcher, 2005; Wada & Netz, 2009), a common pathogen of plants and arthropods.

One reason why as many as three motility mechanisms are acquired in a small class may be related to class Mollicutes abandoning the peptidoglycan layer as in the case of Eukarya. The loss of peptidoglycan is likely related to the parasitic or commensal lifestyle of Mollicutes. Generally, in order for Bacteria to live inside animals and plants, it is necessary to deal with the stress of peptidoglycan layer decomposition by lysozyme (Kawai, Mickiewicz, & Errington, 2018; Tulum, Tahara, & Miyata, 2019). Also, peptidoglycans are a target of innate immunity (Royet & Dziarski, 2007; Royet, Gupta, & Dziarski, 2011). By dispensing with the peptidoglycan synthesis system, the organism is relieved from these stresses and furthermore can reduce its requirements for cellular materials, energy and genomic size. The cells become smaller and softer, which may also help in concealment in the host. Class Mollicutes appears to have relinquished this peptidoglycan layer synthesis as a survival strategy. At the same time, like Archaea, the bacterial flagellum could not function in class Mollicutes, in the absence of a peptidoglycan layer. However, for class Mollicutes to live in host–animal tissue, motility is probably an important strategy for survival, in the processes of infection and evading cellular immune systems. As cells of class Mollicutes are small, unlike Eukarya, intracellular transport devices are not required, but since they have a soft peripheral structure, it would be relatively simple to convey the movement of housekeeping activities present in cells to the outside.

Among housekeeping activities other than intracellular transport, there are many that involve movements of nanometer scale. These include nucleic acid polymerization [RNA polymerase (Gelles & Landick, 1998); helicase (Tuteja & Tuteja, 2004)], protein synthesis (Rodnina, Savelsbergh, & Wintermeyer, 1999), ATP synthesis (Noji, Yasuda, Yoshida, & Kinosita, 1997; Oster & Wang, 1999), protein secretion (Goldman et al., 2015; Ismail, Hedman, Schiller, & Heijne, 2012; Ito & Chiba, 2013), DNA partitioning [eukaryotic chromosome (Vernos & Karsenti, 1996), plasmid segregation (Salje et al., 2010)] and cell division (Mabuchi & Okuno, 1977; Rappaport, 1971). In fact, the gliding motility mechanism of *M. mobile* is thought to originate from an altered ATP synthase, which has been coupled to an adhesin, and the swimming ability of *Spiroplasma* is thought to originate from the structural changes in the cytoskeleton used for synthesis of peptidoglycan layer and segregation of DNA. The fact that most of class Mollicutes isolated so far rely on higher animals and plants for their survival suggests that these types

of motility arose after the Cambrian explosion (Miyata & Hamaguchi, 2016a).

8 | “MOTILITY” NOT DIRECTLY LINKED TO ENERGY

In this article, motions that are driven by mechanisms other than dedicated motor systems are not included in our classification of motility, but there are many examples of movement that fall outside this classification. Examples are found in Bacteria such as the colony spreading of *Staphylococcus aureus* (Figure 1; type i) and the sliding motility of *Bacillus subtilis* (Holscher & Kovacs, 2017). These bacteria can spread on a solid medium by the spreading force in cell division under the control of surface tension through secreting substances that act as surfactants around the cells (Henrichsen, 1972; Kearns, 2010). Another example is the gas vesicles formed in cells by microorganisms present in the hydrosphere such as the phylum Cyanobacteria and Haloarchaea, which move up and down in the environment using the gas vesicles akin to a fish bladder (Figure 1; type ii) (Tashiro, Monson, Ramsay, & Salmond, 2016; Tavlaridou, Winter, & Pfeifer, 2014). "Motility" which does not link directly with energy consumption is known in many higher plants, which have hard cell walls and are difficult to move. For example, turgor pressure in seed pods of violets or the drying of pea pods that can mechanically dissipate the seeds, and the wind dispersal of maple and dandelion seeds (Figure 1; type iii), which could be included in a less strict definition of motility.

9 | CONCLUSIONS

In this perspective, we performed an initial tracing of the evolution of motility systems to produce a Tree of Motility, in which the peptidoglycan layer and the emergence of large cells play critical roles. In order to make this “Tree” more complete and exact, the following information will be useful: (a) quantitative mapping on the phylogenetic tree, based on the structural features of the proteins responsible for each motility, (b) more genome information to fill the gaps between different systems, (c) elucidation of each motility mechanism, (d) discovery of new modes of motility particularly those in CPR, and (e) model experiments reproducing evolution. Thus, this perspective represents the first step in cataloging and establishing the history of emergence of the modes of motility on this planet.

ACKNOWLEDGMENTS

We appreciate inputs from Gohta Goshima at Nagoya University, Keiichi Namba at Osaka University, Ritsu

Kamiya at Gakushu University, and Chihiro Sasakawa at Chiba University. The discussion presented here was done under the support of Grant-in-Aid for Scientific Research on Innovative Areas (Research in a proposed research area) titled “Harmonized supramolecular machinery for motility and its diversity” from the Ministry of Education, Culture, Sports, Science and Technology (24117001 and 17H06082) in 2012–2018.

CONFLICT OF INTEREST

There are no conflicts of interest to declare.

ORCID


Makoto Miyata  <https://orcid.org/0000-0002-7478-7390>

Robert C. Robinson  <https://orcid.org/0000-0001-6367-6903>

Taro Q. P. Uyeda  <https://orcid.org/0000-0002-3584-9499>

Michio Homma  <https://orcid.org/0000-0002-5371-001X>

Yoshiaki Kinoshita  <https://orcid.org/0000-0003-4521-2800>

Masayoshi Nishiyama  <https://orcid.org/0000-0002-0525-3766>

REFERENCES

- Agrebi, R., Wartel, M., Brochier-Armanet, C., & Mignot, T. (2015). An evolutionary link between capsular biogenesis and surface motility in bacteria. *Nature Reviews Microbiology*, *13*, 318–326. <https://doi.org/10.1038/nrmicro3431>
- Akil, C., & Robinson, R. C. (2018). Genomes of Asgard archaea encode profilins that regulate actin. *Nature*, *562*, 439–443. <https://doi.org/10.1038/s41586-018-0548-6>
- Alam, M., & Oesterhelt, D. (1984). Morphology, function and isolation of halobacterial flagella. *Journal of Molecular Biology*, *176*, 459–475. [https://doi.org/10.1016/0022-2836\(84\)90172-4](https://doi.org/10.1016/0022-2836(84)90172-4)
- Albers, S. V., & Jarrell, K. F. (2015). The archaeallum: How Archaea swim. *Frontiers in Microbiology*, *6*, 23. <https://doi.org/10.3389/fmicb.2015.00023>
- Albers, S. V., & Meyer, B. H. (2011). The archaeal cell envelope. *Nature Reviews Microbiology*, *9*, 414–426. <https://doi.org/10.1038/nrmicro2576>
- Amos, W. B., Routledge, L. M., & Yew, F. F. (1975). Calcium-binding proteins in a vorticellid contractile organelle. *Journal of Cell Science*, *19*, 203–213.
- Banerjee, A., Tsai, C. L., Chaudhury, P., Tripp, P., Arvai, A. S., Ishida, J. P., ... Albers, S. V. (2015). FlaF Is a beta-sandwich protein that anchors the archaeallum in the archaeal cell envelope by binding the S-layer protein. *Structure*, *23*, 863–872.
- Berg, H. C. (1974). Dynamic properties of bacterial flagellar motors. *Nature*, *249*, 77–79. <https://doi.org/10.1038/249077a0>
- Berg, H. C. (2003). The rotary motor of bacterial flagella. *Annual Review of Biochemistry*, *72*, 19–54. <https://doi.org/10.1146/annurev.biochem.72.121801.161737>
- Berg, H. C. (2004). *E. coli in Motion*, 1 ed. Verlag New York: Springer.
- Berry, J. L., & Pelicic, V. (2015). Exceptionally widespread nanomachines composed of type IV pilins: The prokaryotic Swiss Army

- knives. *FEMS Microbiology Reviews*, 39, 134–154. <https://doi.org/10.1093/femsre/fuu001>
- Blakemore, R. (1975). Magnetotactic bacteria. *Science*, 190, 377–379. <https://doi.org/10.1126/science.170679>
- Blakemore, R. P., Maratea, D., & Wolfe, R. S. (1979). Isolation and pure culture of a freshwater magnetic spirillum in chemically defined medium. *Journal of Bacteriology*, 140, 720–729.
- Bloodgood, R. A., Leffler, E. M., & Bojczuk, A. T. (1979). Reversible inhibition of *Chlamydomonas* flagellar surface motility. *Journal of Cell Biology*, 82, 664–674. <https://doi.org/10.1083/jcb.82.3.664>
- Bradley, D. E. (1972). Shortening of *Pseudomonas aeruginosa* pili after RNA-phage adsorption. *Journal of General Microbiology*, 72, 303–319. <https://doi.org/10.1099/00221287-72-2-303>
- Brahams, B. (1999). Non-flagellar swimming in marine *Synechococcus*. *Journal of Molecular Microbiology and Biotechnology*, 1, 59–62.
- Bray, D., & White, J. G. (1988). Cortical flow in animal cells. *Science*, 239, 883–888. <https://doi.org/10.1126/science.3277283>
- Bredt, W. (1968). Motility and multiplication of *Mycoplasma pneumoniae*. A phase contrast study. *Pathol. Microbiol.*, 32, 321–326.
- Bredt, W., & Radestock, U. (1977). Gliding motility of *Mycoplasma pulmonis*. *Journal of Bacteriology*, 130, 937–938.
- Brown, C. T., Hug, L. A., Thomas, B. C., Sharon, I., Castelle, C. J., Singh, A., ... Banfield, J. F. (2015). Unusual biology across a group comprising more than 15% of domain Bacteria. *Nature*, 523, 208–211. <https://doi.org/10.1038/nature14486>
- Busiek, K. K., & Margolin, W. (2015). Bacterial actin and tubulin homologs in cell growth and division. *Current Biology*, 25, R243–254. <https://doi.org/10.1016/j.cub.2015.01.030>
- Carayol, N., & Tran Van Nhieu, G. (2013). The inside story of *Shigella* invasion of intestinal epithelial cells. *Cold Spring Harbor Perspectives in Medicine*, 3, a016717. <https://doi.org/10.1101/cshperspect.a016717>
- Castelle, C. J., & Banfield, J. F. (2018). Major new microbial groups expand diversity and alter our understanding of the tree of life. *Cell*, 172, 1181–1197. <https://doi.org/10.1016/j.cell.2018.02.016>
- Chang, Y. W., Rettberg, L. A., Treuner-Lange, A., Iwasa, J., Søgaard-Andersen, L., & Jensen, G. J. (2016). Architecture of the type IVa pilus machine. *Science*, 351, aad2001.
- Charon, N. W., Cockburn, A., Li, C., Liu, J., Miller, K. A., Miller, M. R., ... Wolgemuth, C. W. (2012). The unique paradigm of spirochete motility and chemotaxis. *Annual Review of Microbiology*, 66, 349–370. <https://doi.org/10.1146/annurev-micro-092611-150145>
- Charon, N. W., & Goldstein, S. F. (2002). Genetics of motility and chemotaxis of a fascinating group of bacteria: The spirochetes. *Annual Review of Genetics*, 36, 47–73. <https://doi.org/10.1146/annurev.genet.36.041602.134359>
- Chaudhury, P., Neiner, T., D'Imprima, E., Banerjee, A., Reindl, S., Ghosh, A., ... Albers, S. V. (2016). The nucleotide-dependent interaction of FlaH and FlaI is essential for assembly and function of the archaeal motor. *Molecular Microbiology*, 99, 674–685. <https://doi.org/10.1111/mmi.13260>
- Cole, R. M., Tully, J. G., Popkin, T. J., & Bove, J. M. (1973). Morphology, ultrastructure, and bacteriophage infection of the helical mycoplasma-like organism (*Spiroplasma citri* gen. nov., sp. nov.) cultured from "stubborn" disease of citrus. *Journal of Bacteriology*, 115, 367–384.
- Cox, P. J., & Twigg, G. I. (1974). Leptospiral motility. *Nature*, 250, 260–261. <https://doi.org/10.1038/250260a0>
- Daum, B., Vonck, J., Bellack, A., Chaudhury, P., Reichelt, R., Albers, S. V., ... Kuhlbrandt, W. (2017). Structure and in situ organisation of the *Pyrococcus furiosus* archaeal machinery. *eLife*, 6, e27470. <https://doi.org/10.7554/eLife.27470>
- Dey, B., & Bishai, W. R. (2014). Crosstalk between *Mycobacterium tuberculosis* and the host cell. *Seminars in Immunology*, 26, 486–496. <https://doi.org/10.1016/j.smim.2014.09.002>
- Duggan, P. S., Gottardello, P., & Adams, D. G. (2007). Molecular analysis of genes in *Nostoc punctiforme* involved in pilus biogenesis and plant infection. *Journal of Bacteriology*, 189, 4547–4551. <https://doi.org/10.1128/JB.01927-06>
- Ehlers, K., & Oster, G. (2012). On the mysterious propulsion of *Synechococcus*. *PLoS ONE*, 7, e36081. <https://doi.org/10.1371/journal.pone.0036081>
- Ettienne, E. M. (1970). Control of contractility in *Spirostomum* by dissociated calcium ions. *Journal of General Physiology*, 56, 168–179. <https://doi.org/10.1085/jgp.56.2.168>
- Febvre-Chevalier, C., & Febvre, J. (1992). Microtubule disassembly in vivo: Intercalary destabilization and breakdown of microtubules in the heliozoan *Actinocoryne contractilis*. *Journal of Cell Biology*, 118, 585–594.
- Fukushima, S., Morohoshi, S., Hanada, S., Matsuura, K., & Haruta, S. (2016). Gliding motility driven by individual cell-surface movements in a multicellular filamentous bacterium *Chloroflexus aggregans*. *FEMS Microbiology Letters*, 363, fnw056.
- Gelles, J., & Landick, R. (1998). RNA polymerase as a molecular motor. *Cell*, 93, 13–16. [https://doi.org/10.1016/S0092-8674\(00\)81140-X](https://doi.org/10.1016/S0092-8674(00)81140-X)
- Gibbons, B. H., & Gibbons, I. R. (1972). Flagellar movement and adenosine triphosphatase activity in sea urchin sperm extracted with triton X-100. *Journal of Cell Biology*, 54, 75–97. <https://doi.org/10.1083/jcb.54.1.75>
- Gibbons, I. R. (1963). Studies on the protein components of cilia from *Tetrahymena pyriformis*. *Proceedings of the National Academy of Sciences of the United States of America*, 50, 1002–1010. <https://doi.org/10.1073/pnas.50.5.1002>
- Gibbons, I. R., & Fronk, E. (1972). Some properties of bound and soluble dynein from sea urchin sperm flagella. *Journal of Cell Biology*, 54, 365–381. <https://doi.org/10.1083/jcb.54.2.365>
- Gogarten, J. P., & Taiz, L. (1992). Evolution of proton pumping ATPases: Rooting the tree of life. *Photosynthesis Research*, 33, 137–146. <https://doi.org/10.1007/BF00039176>
- Goldman, D. H., Kaiser, C. M., Milin, A., Righini, M., Tinoco, I. Jr, & Bustamante, C. (2015). Ribosome. Mechanical force releases nascent chain-mediated ribosome arrest *in vitro* and *in vivo*. *Science*, 348, 457–460. <https://doi.org/10.1126/science.1261909>
- Greyson, A. J., Green, J. C., & Leadbetter, B. S. C. (1993). Structure and physiology of the haptonema in *Chrysochromulina (Prymnesiophyceae)*. II. Mechanisms of haptonemal coiling and the regeneration process. *Journal of Phycology*, 29, 686–700.
- Haglund, C. M., & Welch, M. D. (2011). Pathogens and polymers: Microbe-host interactions illuminate the cytoskeleton. *Journal of Cell Biology*, 195, 7–17. <https://doi.org/10.1083/jcb.201103148>
- Hanada, S., Hiraishi, A., Shimada, K., & Matsuura, K. (1995). *Chloroflexus aggregans* sp. nov., a filamentous phototrophic bacterium which forms dense cell aggregates by active gliding movement. *International Journal of Systematic Bacteriology*, 45, 676–681. <https://doi.org/10.1099/00207713-45-4-676>
- Hanada, S., Shimada, K., & Matsuura, K. (2002). Active and energy-dependent rapid formation of cell aggregates in the thermophilic photosynthetic bacterium *Chloroflexus aggregans*. *FEMS Microbiology Letters*, 208, 275–279.

- Harshey, R. M., & Partridge, J. D. (2015). Shelter in a swarm. *Journal of Molecular Biology*, *427*, 3683–3694. <https://doi.org/10.1016/j.jmb.2015.07.025>
- Henrichsen, J. (1972). Bacterial surface translocation: A survey and a classification. *Bacteriological Reviews*, *36*, 478–503.
- Hoffman-Berling, H. (1958). Der mechanismus eines neuen, von der muskelkontraktion verschiedenen kontraktionszyklus. *Biochimica Et Biophysica Acta*, *27*, 247–255.
- Holscher, T., & Kovacs, A. T. (2017). Sliding on the surface: Bacterial spreading without an active motor. *Environmental Microbiology*, *19*, 2537–2545. <https://doi.org/10.1111/1462-2920.13741>
- Huang, B., & Pitelka, D. R. (1973). The contractile process in the ciliate, *Stentor coeruleus*. I. The role of microtubules and filaments. *Journal of Cell Biology*, *57*, 704–728. <https://doi.org/10.1083/jcb.57.3.704>
- Hug, L. A., Baker, B. J., Anantharaman, K., Brown, C. T., Probst, A. J., Castelle, C. J., ... Banfield, J. F. (2016). A new view of the tree of life. *Nature Microbiology*, *1*, 16048. <https://doi.org/10.1038/nmicr.obiol.2016.48>
- Huxley, A. F., & Niedergerke, R. (1954). Structural changes in muscle during contraction; interference microscopy of living muscle fibres. *Nature*, *173*, 971–973. <https://doi.org/10.1038/173971a0>
- Huxley, H., & Hanson, J. (1954). Changes in the cross-striations of muscle during contraction and stretch and their structural interpretation. *Nature*, *173*, 973–976. <https://doi.org/10.1038/173973a0>
- Ismail, N., Hedman, R., Schiller, N., & von Heijne, G. (2012). A biphasic pulling force acts on transmembrane helices during translocon-mediated membrane integration. *Nature Structural & Molecular Biology*, *19*, 1018–1022. <https://doi.org/10.1038/nsmb.2376>
- Ito, K., & Chiba, S. (2013). Arrest peptides: Cis-acting modulators of translation. *Annual Review of Biochemistry*, *82*, 171–202.
- Ito, M., & Takahashi, Y. (2017). Nonconventional cation-coupled flagellar motors derived from the alkaliphilic *Bacillus* and *Paenibacillus* species. *Extremophiles*, *21*, 3–14. <https://doi.org/10.1007/s00792-016-0886-y>
- Iyer, L. M., Leipe, D. D., Koonin, E. V., & Aravind, L. (2004). Evolutionary history and higher order classification of AAA+ ATPases. *Journal of Structural Biology*, *146*, 11–31. <https://doi.org/10.1016/j.jsb.2003.10.010>
- Jarrell, K. F., & Albers, S. V. (2012). The archaeellum: An old motility structure with a new name. *Trends in Microbiology*, *20*, 307–312. <https://doi.org/10.1016/j.tim.2012.04.007>
- Jishage, M., & Ishihama, A. (1997). Variation in RNA polymerase sigma subunit composition within different stocks of *Escherichia coli* W3110. *Journal of Bacteriology*, *179*, 959–963. <https://doi.org/10.1128/jb.179.3.959-963.1997>
- Kawachi, M., & Inouye, I. (1994). Ca²⁺-mediated induction of the coiling of the haptonema in *Chrysochromulina hirta* (Prymnesiophyta = Haptophyta). *Phycologia*, *33*, 53–57.
- Kawai, Y., Mickiewicz, K., & Errington, J. (2018). Lysozyme counteracts beta-lactam antibiotics by promoting the emergence of L-form bacteria. *Cell*, *172*, 1038–1049. <https://doi.org/10.1016/j.cell.2018.08.010>
- Kearns, D. B. (2010). A field guide to bacterial swarming motility. *Nature Reviews Microbiology*, *8*, 634–644. <https://doi.org/10.1038/nrmicro2405>
- Kearns, D. B. (2013). You get what you select for: Better swarming through more flagella. *Trends in Microbiology*, *21*, 508–509. <https://doi.org/10.1016/j.tim.2013.08.003>
- Khayatan, B., Meeks, J. C., & Risser, D. D. (2015). Evidence that a modified type IV pilus-like system powers gliding motility and polysaccharide secretion in filamentous cyanobacteria. *Molecular Microbiology*, *98*, 1021–1036. <https://doi.org/10.1111/mmi.13205>
- Kinosita, Y., Uchida, N., Nakane, D., & Nishizaka, T. (2016). Direct observation of rotation and steps of the archaeellum in the swimming halophilic archaeon *Halobacterium salinarum*. *Nature Microbiology*, *1*, 16148. <https://doi.org/10.1038/nmicr.obiol.2016.148>
- Koch, A. L. (1996). What size should a bacterium be? A question of scale. *Annual Review of Microbiology*, *50*, 317–348. <https://doi.org/10.1146/annurev.micro.50.1.317>
- Kull, F. J., Vale, R. D., & Fletterick, R. J. (1998). The case for a common ancestor: Kinesin and myosin motor proteins and G proteins. *Journal of Muscle Research and Cell Motility*, *19*, 877–886.
- Lane, N., & Martin, W. (2010). The energetics of genome complexity. *Nature*, *467*, 929–934. <https://doi.org/10.1038/nature09486>
- Lapidus, I. R., & Berg, H. C. (1982). Gliding motility of *Cytophaga* sp. strain U67. *Journal of Bacteriology*, *151*, 384–398.
- LaRock, D. L., Chaudhary, A., & Miller, S. I. (2015). *Salmonellae* interactions with host processes. *Nature Reviews Microbiology*, *13*, 191–205. <https://doi.org/10.1038/nrmicro3420>
- Larsen, S. H., Reader, R. W., Kort, E. N., Tso, W. W., & Adler, J. (1974). Change in direction of flagellar rotation is the basis of the chemotactic response in *Escherichia coli*. *Nature*, *249*, 74–77. <https://doi.org/10.1038/249074a0>
- Lautrop, H. (1961). Bacterium anitratum transferred to the genus *Cytophaga*. *International Journal of Systematic and Evolutionary Microbiology*, *11*, 107–108. <https://doi.org/10.1099/0096266X-11-3-107>
- Leipe, D. D., Wolf, Y. I., Koonin, E. V., & Aravind, L. (2002). Classification and evolution of P-loop GTPases and related ATPases. *Journal of Molecular Biology*, *317*, 41–72. <https://doi.org/10.1006/jmbi.2001.5378>
- Lele, P. P., Hosu, B. G., & Berg, H. C. (2013). Dynamics of mechanosensing in the bacterial flagellar motor. *Proceedings of the National Academy of Sciences of the United States of America*, *110*, 11839–11844. <https://doi.org/10.1073/pnas.1305885110>
- Li, C., Motaleb, A., Sal, M., Goldstein, S. F., & Charon, N. W. (2000). Spirochete periplasmic flagella and motility. *Journal of Molecular Microbiology and Biotechnology*, *2*, 345–354.
- Liu, P., Zheng, H., Meng, Q., Terahara, N., Gu, W., Wang, S., ... Miyata, M. (2017). Chemotaxis without conventional two-component system, based on cell polarity and aerobic conditions in helicity-switching swimming of *Spiroplasma eriocheiris*. *Frontiers in Microbiology*, *8*, 58. <https://doi.org/10.3389/fmicb.2017.00058>
- Liu, R., & Ochman, H. (2007). Origins of flagellar gene operons and secondary flagellar systems. *Journal of Bacteriology*, *189*, 7098–7104. <https://doi.org/10.1128/JB.00643-07>
- Mabuchi, I., & Okuno, M. (1977). The effect of myosin antibody on the division of starfish blastomeres. *Journal of Cell Biology*, *74*, 251–263. <https://doi.org/10.1083/jcb.74.1.251>
- Magariyama, Y., Sugiyama, S., Muramoto, K., Kawagishi, I., Imae, Y., & Kudo, S. (1995). Simultaneous measurement of bacterial flagellar rotation rate and swimming speed. *Biophysical Journal*, *69*, 2154–2162. [https://doi.org/10.1016/S0006-3495\(95\)80089-5](https://doi.org/10.1016/S0006-3495(95)80089-5)
- Makarova, K. S., Yutin, N., Bell, S. D., & Koonin, E. V. (2010). Evolution of diverse cell division and vesicle formation systems

- in *Archaea*. *Nature Reviews Microbiology*, 8, 731–741. <https://doi.org/10.1038/nrmicro2406>
- Martinez, A., Torello, S., & Kolter, R. (1999). Sliding motility in mycobacteria. *Journal of Bacteriology*, 181, 7331–7338.
- Mattick, J. S. (2002). Type IV pili and twitching motility. *Annual Review of Microbiology*, 56, 289–314. <https://doi.org/10.1146/annurev.micro.56.012302.160938>
- McBride, M. J., & Nakane, D. (2015). *Flavobacterium* gliding motility and the type IX secretion system. *Current Opinion in Microbiology*, 28, 72–77. <https://doi.org/10.1016/j.mib.2015.07.016>
- McCallum, M., Tammam, S., Khan, A., Burrows, L. L., & Howell, P. L. (2017). The molecular mechanism of the type IVa pilus motors. *Nature Communications*, 8, 15091. <https://doi.org/10.1038/ncomms15091>
- McCarter, L. L. (2004). Dual flagellar systems enable motility under different circumstances. *Journal of Molecular Microbiology and Biotechnology*, 7, 18–29. <https://doi.org/10.1159/000077866>
- McFadden, G. I. (2014). Origin and evolution of plastids and photosynthesis in eukaryotes. *Cold Spring Harbor Perspectives in Biology*, 6, a016105. <https://doi.org/10.1101/cshperspect.a016105>
- Meissner, M., Schluter, D., & Soldati, D. (2002). Role of *Toxoplasma gondii* myosin A in powering parasite gliding and host cell invasion. *Science*, 298, 837–840. <https://doi.org/10.1126/science.1074553>
- Mercier, R., & Mignot, T. (2016). Regulations governing the multicellular lifestyle of *Myxococcus xanthus*. *Current Opinion in Microbiology*, 34, 104–110. <https://doi.org/10.1016/j.mib.2016.08.009>
- Minamino, T. (2014). Protein export through the bacterial flagellar type III export pathway. *Biochimica Et Biophysica Acta*, 1843, 1642–1648. <https://doi.org/10.1016/j.bbamcr.2013.09.005>
- Minamino, T., & Imada, K. (2015). The bacterial flagellar motor and its structural diversity. *Trends in Microbiology*, 23, 267–274. <https://doi.org/10.1016/j.tim.2014.12.011>
- Minamino, T., Imada, K., & Namba, K. (2008). Molecular motors of the bacterial flagella. *Current Opinion in Structural Biology*, 18, 693–701. <https://doi.org/10.1016/j.sbi.2008.09.006>
- Minamino, T., Terahara, N., Kojima, S., & Namba, K. (2018). Autonomous control mechanism of stator assembly in the bacterial flagellar motor in response to changes in the environment. *Molecular Microbiology*, 109, 723–734. <https://doi.org/10.1111/mmi.14092>
- Miyata, M. (2010). Unique centipede mechanism of *Mycoplasma* gliding. *Annual Review of Microbiology*, 64, 519–537.
- Miyata, M., & Hamaguchi, T. (2016a). Integrated information and prospects for gliding mechanism of the pathogenic bacterium *Mycoplasma pneumoniae*. *Frontiers in Microbiology*, 7, 960. <https://doi.org/10.3389/fmicb.2016.00960>
- Miyata, M., & Hamaguchi, T. (2016b). Prospects for the gliding mechanism of *Mycoplasma mobile*. *Current Opinion in Microbiology*, 29, 15–21. <https://doi.org/10.1016/j.mib.2015.08.010>
- Mizutani, M., & Miyata, M. (2019). Behaviors and energy source of *Mycoplasma gallisepticum* gliding. *Journal of Bacteriology*, 201, e00397–e1319.
- Mulkidjanian, A. Y., Makarova, K. S., Galperin, M. Y., & Koonin, E. V. (2007). Inventing the dynamo machine: The evolution of the F-type and V-type ATPases. *Nature Reviews Microbiology*, 5, 892–899. <https://doi.org/10.1038/nrmicro1767>
- Nakane, D., Sato, K., Wada, H., McBride, M. J., & Nakayama, K. (2013). Helical flow of surface protein required for bacterial gliding motility. *Proceedings of the National Academy of Sciences of the United States of America*, 110, 11145–11150. <https://doi.org/10.1073/pnas.1219753110>
- Nan, B., McBride, M. J., Chen, J., Zusman, D. R., & Oster, G. (2014). Bacteria that glide with helical tracks. *Current Biology*, 24, R169–R173. <https://doi.org/10.1016/j.cub.2013.12.034>
- Nelson, W. C., & Stegen, J. C. (2015). The reduced genomes of Parcubacteria (OD1) contain signatures of a symbiotic lifestyle. *Frontiers in Microbiology*, 6, 713. <https://doi.org/10.3389/fmicb.2015.00713>
- Noji, H., Yasuda, R., Yoshida, M., & Kinosita, K. Jr (1997). Direct observation of the rotation of F1-ATPase. *Nature*, 386, 299–302. <https://doi.org/10.1038/386299a0>
- Nomura, M., Atsugi, K., Hirose, K., Shiba, K., Yanase, R., Nakayama, T., ... Inaba, K. (2019). Microtubule stabilizer reveals requirement of Ca²⁺-dependent conformational changes of microtubules for rapid coiling of haptoneima in haptophyte algae. *Biology Open*, 8, bio036590.
- Nord, A. L., Gachon, E., Perez-Carrasco, R., Nirody, J. A., Barducci, A., Berry, R. M., & Pedaci, F. (2017). Catch bond drives stator mechanosensitivity in the bacterial flagellar motor. *Proceedings of the National Academy of Sciences of the United States of America*, 114, 12952–12957. <https://doi.org/10.1073/pnas.1716002114>
- Oster, G., & Wang, H. (1999). ATP synthase: Two motors, two fuels. *Structure*, 7, R67–R72. [https://doi.org/10.1016/S0969-2126\(99\)80046-X](https://doi.org/10.1016/S0969-2126(99)80046-X)
- Pallen, M. J., & Matzke, N. J. (2006). From the origin of species to the origin of bacterial flagella. *Nature Reviews Microbiology*, 4, 784–790. <https://doi.org/10.1038/nrmicro1493>
- Pallen, M. J., Penn, C. W., & Chaudhuri, R. R. (2005). Bacterial flagellar diversity in the post-genomic era. *Trends in Microbiology*, 13, 143–149. <https://doi.org/10.1016/j.tim.2005.02.008>
- Paluch, E. K., & Raz, E. (2013). The role and regulation of blebs in cell migration. *Current Opinion in Cell Biology*, 25, 582–590. <https://doi.org/10.1016/j.ceb.2013.05.005>
- Parke, M., Manton, I., & Clarke, B. (1955). Studies on marine flagellates. II. Three new species of *Chrysochromulina*. *Journal of the Marine Biological Association of the United Kingdom*, 34, 579–609.
- Pate, J. L., & Chang, L.-Y.-E. (1979). Evidence that gliding motility in prokaryotic cells is driven by rotary assemblies in the cell envelopes. *Current Microbiology*, 2, 59–64. <https://doi.org/10.1007/BF02601737>
- Patrick, J. E., & Kearns, D. B. (2012). Swarming motility and the control of master regulators of flagellar biosynthesis. *Molecular Microbiology*, 83, 14–23. <https://doi.org/10.1111/j.1365-2958.2011.07917.x>
- Pfeifer, F. (2012). Distribution, formation and regulation of gas vesicles. *Nature Reviews Microbiology*, 10, 705–715. <https://doi.org/10.1038/nrmicro2834>
- Pizarro-Cerda, J., Kuhbacher, A., & Cossart, P. (2012). Entry of *Listeria monocytogenes* in mammalian epithelial cells: An updated view. *Cold Spring Harbor Perspectives in Medicine*, 2(11), a010009. <https://doi.org/10.1101/cshperspect.a010009>
- Popp, D., & Robinson, R. C. (2011). Many ways to build an actin filament. *Molecular Microbiology*, 80, 300–308. <https://doi.org/10.1111/j.1365-2958.2011.07599.x>
- Randall, J. T., & Jackson, S. F. (1958). Fine structure and function in *Stentor polymorphus*. *The Journal of Biophysical and Biochemical Cytology*, 4, 807–830.
- Rapoport, T. A., Li, L., & Park, E. (2017). Structural and mechanistic insights into protein translocation. *Annual Review of Cell and*

- Developmental Biology*, 33, 369–390. <https://doi.org/10.1146/annurev-cellbio-100616-060439>
- Rappaport, R. (1971). Cytokinesis in animal cells. *International Review of Cytology*, 31, 169–213.
- Roberts, T. M., & Stewart, M. (1997). Nematode sperm: Amoeboid movement without actin. *Trends in Cell Biology*, 7, 368–373. [https://doi.org/10.1016/S0962-8924\(97\)01113-6](https://doi.org/10.1016/S0962-8924(97)01113-6)
- Rodnina, M. V., Savelsbergh, A., & Wintermeyer, W. (1999). Dynamics of translation on the ribosome: Molecular mechanics of translocation. *FEMS Microbiology Reviews*, 23, 317–333. <https://doi.org/10.1111/j.1574-6976.1999.tb00402.x>
- Royet, J., & Dziarski, R. (2007). Peptidoglycan recognition proteins: Pleiotropic sensors and effectors of antimicrobial defences. *Nature Reviews Microbiology*, 5, 264–277. <https://doi.org/10.1038/nrmicro1620>
- Royet, J., Gupta, D., & Dziarski, R. (2011). Peptidoglycan recognition proteins: Modulators of the microbiome and inflammation. *Nature Reviews Immunology*, 11, 837–851. <https://doi.org/10.1038/nri3089>
- Salje, J., Gayathri, P., & Löwe, J. (2010). The ParMRC system: Molecular mechanisms of plasmid segregation by actin-like filaments. *Nature Reviews Microbiology*, 8, 683–692. <https://doi.org/10.1038/nrmicro2425>
- Schulz, H. N. (2006). The genus *Thiomargarita*. In M. Dworkin, S. Falkow, E. Rosenberg, K. H. Schleifer, & E. Stackebrandt (Eds.), *The prokaryotes* (pp. 1156–1163). New York, NY: Springer.
- Seipel, K., & Schmid, V. (2005). Evolution of striated muscle: Jellyfish and the origin of triploblasty. *Developmental Biology*, 282, 14–26. <https://doi.org/10.1016/j.ydbio.2005.03.032>
- Shaevitz, J. W., Lee, J. Y., & Fletcher, D. A. (2005). *Spiroplasma* swim by a processive change in body helicity. *Cell*, 122, 941–945. <https://doi.org/10.1016/j.cell.2005.07.004>
- Shahapure, R., Driessen, R. P., Haurat, M. F., Albers, S. V., & Dame, R. T. (2014). The archaeellum: A rotating type IV pilus. *Molecular Microbiology*, 91, 716–723. <https://doi.org/10.1111/mmi.12486>
- Shih, S. M., Engel, B. D., Kocabas, F., Bilyard, T., Gennerich, A., Marshall, W. F., & Yildiz, A. (2013). Intraflagellar transport drives flagellar surface motility. *Elife*, 2, e00744. <https://doi.org/10.7554/eLife.00744>
- Silverman, M., & Simon, M. (1974). Flagellar rotation and the mechanism of bacterial motility. *Nature*, 249, 73–74. <https://doi.org/10.1038/249073a0>
- Small, J. V., Rohlf, A., & Herzog, M. (1993). Actin and cell movement. *Symposia of the Society for Experimental Biology*, 47, 57–71.
- Spang, A., Saw, J. H., Jorgensen, S. L., Zaremba-Niedzwiedzka, K., Martijn, J., Lind, A. E., ... Ettema, T. J. G. (2015). Complex archaea that bridge the gap between prokaryotes and eukaryotes. *Nature*, 521, 173–179. <https://doi.org/10.1038/nature14447>
- Stevens, J. M., Galyov, E. E., & Stevens, M. P. (2006). Actin-dependent movement of bacterial pathogens. *Nature Reviews Microbiology*, 4, 91–101. <https://doi.org/10.1038/nrmicro1320>
- Suzaki, T., Shigenaka, Y., Watanabe, S., & Toyohara, A. (1980). Food capture and ingestion in the large heliozoan, *Echinospaerium nucleofilum*. *Journal of Cell Science*, 42, 61–79.
- Szent-Györgyi, A. (1947). *Chemistry of muscular contraction*. New York, NY: Academic Press.
- Tahara, H., Takabe, K., Sasaki, Y., Kasuga, K., Kawamoto, A., Koizumi, N., & Nakamura, S. (2018). The mechanism of two-phase motility in the spirochete *Leptospira*: Swimming and crawling. *Sci Adv*, 4, eaar7975.
- Takabe, K., Kawamoto, A., Tahara, H., Kudo, S., & Nakamura, S. (2017). Implications of coordinated cell-body rotations for *Leptospira* motility. *Biochemical and Biophysical Research Communications*, 491, 1040–1046. <https://doi.org/10.1016/j.bbrc.2017.08.007>
- Takekawa, N., Nishiyama, M., Kaneseke, T., Kanai, T., Atomi, H., Kojima, S., & Homma, M. (2015). Sodium-driven energy conversion for flagellar rotation of the earliest divergent hyperthermophilic bacterium. *Scientific Reports*, 5, 12711. <https://doi.org/10.1038/srep12711>
- Tashiro, Y., Monson, R. E., Ramsay, J. P., & Salmond, G. P. (2016). Molecular genetic and physical analysis of gas vesicles in buoyant enterobacteria. *Environmental Microbiology*, 18, 1264–1276. <https://doi.org/10.1111/1462-2920.13203>
- Tavlaridou, S., Winter, K., & Pfeifer, F. (2014). The accessory gas vesicle protein GvpM of haloarchaea and its interaction partners during gas vesicle formation. *Extremophiles*, 18, 693–706. <https://doi.org/10.1007/s00792-014-0650-0>
- Theriot, J. A., & Mitchison, T. J. (1991). Actin microfilament dynamics in locomoting cells. *Nature*, 352, 126–131. <https://doi.org/10.1038/352126a0>
- Tilney, L. G., & Porter, K. R. (1965). Studies on microtubules in Heliozoa. I. The fine structure of *Actinosphaerium nucleofilum* (Barrett), with particular reference to the axial rod structure. *Protoplasma*, 60, 317–344. <https://doi.org/10.1007/BF01247886>
- Tilney, L. G., & Portnoy, D. A. (1989). Actin filaments and the growth, movement, and spread of the intracellular bacterial parasite, *Listeria monocytogenes*. *Journal of Cell Biology*, 109, 1597–1608. <https://doi.org/10.1083/jcb.109.4.1597>
- Tulum, I., Tahara, Y., & Miyata, M. (2019). Peptidoglycan layer and disruption processes in *Bacillus subtilis* cells visualized using quick-freeze, deep-etch electron microscopy. *Microscopy*, 68, dfz033. in press.
- Tuteja, N., & Tuteja, R. (2004). Prokaryotic and eukaryotic DNA helicases. Essential molecular motor proteins for cellular machinery. *European Journal of Biochemistry*, 271, 1835–1848. <https://doi.org/10.1111/j.1432-1033.2004.04093.x>
- Uebe, R., & Schuler, D. (2016). Magnetosome biogenesis in magnetotactic bacteria. *Nature Reviews Microbiology*, 14, 621–637. <https://doi.org/10.1038/nrmicro.2016.99>
- Uyeda, T. Q. P., & Nagasaki, A. (2004). Variations on a theme: The many modes of cytokinesis. *Current Opinion in Cell Biology*, 16, 55–60. <https://doi.org/10.1016/j.ceb.2003.11.004>
- Vale, R. D., & Milligan, R. A. (2000). The way things move: Looking under the hood of molecular motor proteins. *Science*, 288, 88–95. <https://doi.org/10.1126/science.288.5463.88>
- Vale, R. D., Reese, T. S., & Sheetz, M. P. (1985). Identification of a novel force-generating protein, kinesin, involved in microtubule-based motility. *Cell*, 42, 39–50. [https://doi.org/10.1016/S0092-8674\(85\)80099-4](https://doi.org/10.1016/S0092-8674(85)80099-4)
- Vernos, I., & Karsenti, E. (1996). Motors involved in spindle assembly and chromosome segregation. *Current Opinion in Cell Biology*, 8, 4–9. [https://doi.org/10.1016/S0955-0674\(96\)80041-X](https://doi.org/10.1016/S0955-0674(96)80041-X)
- Wada, H., Nakane, D., & Chen, H. Y. (2013). Bidirectional bacterial gliding motility powered by the collective transport of cell surface proteins. *Physical Review Letters*, 111, 248102. <https://doi.org/10.1103/PhysRevLett.111.248102>
- Wada, H., & Netz, R. R. (2007). Model for self-propulsive helical filaments: Kink-pair propagation. *Physical Review Letters*, 99, 108102. <https://doi.org/10.1103/PhysRevLett.99.108102>
- Wada, H., & Netz, R. R. (2009). Hydrodynamics of helical-shaped bacterial motility. *Physical Review E: Statistical, Nonlinear, and Soft Matter Physics*, 80, 021921. <https://doi.org/10.1103/PhysRevE.80.021921>

- Waterbury, J. B., Willey, J. M., Franks, D. G., Valois, F. W., & Watson, S. W. (1985). A cyanobacterium capable of swimming motility. *Science*, *230*, 74–76. <https://doi.org/10.1126/science.230.4721.74>
- Wessels, D., Soll, D. R., Knecht, D., Loomis, W. F., De Lozanne, A., & Spudich, J. (1988). Cell motility and chemotaxis in *Dictyostelium* amoebae lacking myosin heavy chain. *Developmental Biology*, *128*, 164–177. [https://doi.org/10.1016/0012-1606\(88\)90279-5](https://doi.org/10.1016/0012-1606(88)90279-5)
- Wickstead, B., & Gull, K. (2011). The evolution of the cytoskeleton. *Journal of Cell Biology*, *194*, 513–525. <https://doi.org/10.1083/jcb.201102065>
- Wilde, A., & Mullineaux, C. W. (2015). Motility in cyanobacteria: Polysaccharide tracks and Type IV pilus motors. *Molecular Microbiology*, *98*, 998–1001. <https://doi.org/10.1111/mmi.13242>
- Williams, T. A., Foster, P. G., Cox, C. J., & Embley, T. M. (2013). An archaeal origin of eukaryotes supports only two primary domains of life. *Nature*, *504*, 231–236. <https://doi.org/10.1038/nature12779>
- Yamaoka, N., Suetomo, Y., Yoshihisa, T., & Sonobe, S. (2016). Motion analysis and ultrastructural study of a colonial diatom, *Bacillaria paxillifer*. *Microscopy*, *65*, 211–221.
- Yao, N. Y., & O'Donnell, M. E. (2016). Evolution of replication machines. *Critical Reviews in Biochemistry and Molecular Biology*, *51*, 135–149. <https://doi.org/10.3109/10409238.2015.1125845>
- Yoshida, S., Handa, Y., Suzuki, T., Ogawa, M., Suzuki, M., Tamai, A., ... Sasakawa, C. (2006). Microtubule-severing activity of *Shigella* is pivotal for intercellular spreading. *Science*, *314*, 985–989. <https://doi.org/10.1126/science.1133174>
- Yumura, S., Mori, H., & Fukui, Y. (1984). Localization of actin and myosin for the study of amoeboid movement in *Dictyostelium* using improved immunofluorescence. *Journal of Cell Biology*, *99*, 894–899. <https://doi.org/10.1083/jcb.99.3.894>
- Zaremba-Niedzwiedzka, K., Caceres, E. F., Saw, J. H., Bäckström, D., Juzokaite, L., Vancaester, E., ... Ettema, T. J. G. (2017). Asgard archaea illuminate the origin of eukaryotic cellular complexity. *Nature*, *541*, 353–358. <https://doi.org/10.1038/nature21031>

How to cite this article: Miyata M, Robinson RC, Uyeda TQP, et al. Tree of motility – A proposed history of motility systems in the tree of life. *Genes Cells*. 2020;25:6–21. <https://doi.org/10.1111/gtc.12737>