



## New cytotoxic cembranolides from an Okinawan soft coral, *Lobophytum* sp.

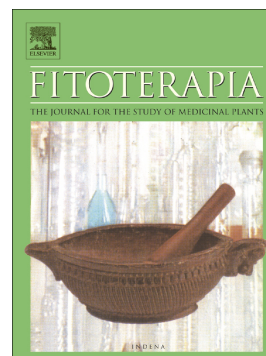
Author	Prodip K. Roy, Sona Roy, Katsuhiko Ueda
journal or publication title	Fitoterapia
volume	136
page range	104162
year	2019-05-07
Publisher	Elsevier
Rights	(C) 2019 Elsevier B.V.
Author's flag	author
URL	<a href="http://id.nii.ac.jp/1394/00001196/">http://id.nii.ac.jp/1394/00001196/</a>

doi: info:doi/10.1016/j.fitote.2019.05.001

## Accepted Manuscript

New cytotoxic cembranolides from an Okinawan soft coral,  
*Lobophytum* sp.

Prodip K. Roy, Sona Roy, Katsuhiko Ueda



PII: S0367-326X(19)30718-X  
DOI: <https://doi.org/10.1016/j.fitote.2019.05.001>  
Reference: FITOTE 4162  
To appear in: *Fitoterapia*  
Received date: 1 April 2019  
Revised date: 29 April 2019  
Accepted date: 5 May 2019

Please cite this article as: P.K. Roy, S. Roy and K. Ueda, New cytotoxic cembranolides from an Okinawan soft coral, *Lobophytum* sp., *Fitoterapia*, <https://doi.org/10.1016/j.fitote.2019.05.001>

This is a PDF file of an unedited manuscript that has been accepted for publication. As a service to our customers we are providing this early version of the manuscript. The manuscript will undergo copyediting, typesetting, and review of the resulting proof before it is published in its final form. Please note that during the production process errors may be discovered which could affect the content, and all legal disclaimers that apply to the journal pertain.

## New cytotoxic cembranolides from an Okinawan soft coral, *Lobophytum* sp.

Prodip K. Roy<sup>1,\*</sup>, Sona Roy<sup>2</sup> and Katsuhiko Ueda<sup>1,\*</sup>

<sup>1</sup>Department of Chemistry, Biology, and Marine Science, University of the Ryukyus, Nishihara-cho, Okinawa 903-2013, Japan.

<sup>2</sup>Bioinspired Soft Matter Unit, Okinawa Institute of Science and Technology Graduate University, 1919-1 Tancha, Onna-son, Okinawa 904-0495, Japan; sonarroy@gmail.com (S.R.)

\* Correspondence: prodipkroy@gmail.com (P.K.R.); kueda@sci.u-ryukyu.ac.jp (K.U.); Tel.: +81-80-3945-4180 (P.K.R.), +81-98-895-8894 (K.U.); Fax: +81-98-895-8565A (K.U.)

### Abstract:

Three new cembranolides (**1–3**) were isolated from an Okinawan soft coral, *Lobophytum* sp., together with the known cembranolide diterpenoids (**4–9**). Their structures were determined by extensive analysis of spectroscopic data (1D and 2D NMR, IR, and MS), molecular modeling, and comparison with data reported elsewhere. All compounds contain an  $\alpha$ -methylene- $\gamma$ -lactone ring adjacent to a cembrane, and some of them (**1**, **6–8**) have an epoxide ring as well. The new metabolites were evaluated for cytotoxicity against HeLa, A459, B16-F10, and RAW 264.7 cells and anti-inflammatory effect in LPS-stimulated inflammatory RAW 264.7 macrophage cells.

**Key words:** Cembranolide; Diterpene; Cytotoxicity; Anti-inflammatory; *Lobophytum*

### 1. Introduction

Marine organisms are biologically diverse and so are their metabolites, showing a wide spectrum of bioactivities [1]. The soft coral genus, *Lobophytum*, is a good source of cembrane-type metabolites [2] containing a 14-carbon rings that are structurally diverse and show various biological activities. This soft coral is also a source of diterpenoids, lipids, steroids, tocopherols, triterpenoids, and zoanthamine-type alkaloids [3]. Over 250 cembrane-type diterpenoids have been isolated from the genus *Lobophytum* and these exhibit various pharmacological activities, such as cytotoxic [4–11], anti-viral [12, 13], anti-bacterial [14, 15], anti-inflammatory [16–18], HIV-inhibitor [13], and neutrophil elastase-release activity [19–21]. A cembrane-type lactone, lobophytolide, was first isolated from *Lobophytum cristagalli* [22]. The cembrane lactones are generally five-, six-, or seven-membered lactone rings [3]

that occasionally bear either an unsaturation or an exo-double bond. The lactone rings of cembranolides account for most of their bioactivity.

Cembranolide structural diversity and pharmacological potential inspired us to work further on the soft coral (*Lobophytum*) to find novel secondary metabolites. We examined an Okinawan soft coral, *Lobophytum* sp., and isolated three new cembranolides (**1–3**) along with the known cembranolide diterpenoids **4–9** [23–26]. Herein, we report the isolation, structure determination, and cytotoxicities of these new metabolites.

## 2. Experimental section

### 2.1. General experimental procedures

Optical rotation was measured using a JASCO P-1010 Polarimeter. Nuclear magnetic resonance (NMR) spectra were recorded on a Bruker Avance III 500 spectrometer in CDCl<sub>3</sub>. Chemical shifts and coupling constants were given as  $\delta$  and Hz, respectively, and <sup>1</sup>H and <sup>13</sup>C chemical shifts were referenced to the residual solvent peaks ( $\delta_{\text{H}} = 7.26$  and  $\delta_{\text{C}} = 77.24$ ). Infrared (IR) spectra were recorded on a JASCO FT/IR-6100 Fourier Transform Infrared Spectrometer. High-resolution mass spectra (HRMS) were obtained on an LTQ Orbitrap hybrid mass spectrometer (Thermo Scientific, Bremen, Germany) equipped with a nanospray ionization (NSI) source. Open column chromatography was performed on Kieselgel 60 (70–230 mesh, Merck). High-performance liquid chromatography (HPLC) was performed using a COSMOSIL Si60 HPLC column (5SL,  $\phi$  10 × 250 mm). Analytical thin-layer chromatography (TLC) was performed using Kieselgel 60 F<sub>254</sub>DC-fertigplatten (Merck). All solvents were reagent grade.

### 2.2. Animal materials

The soft coral was collected during low tide from the coast of Irabu Island, Okinawa, Japan, in March 2013, and identified as a *Lobophytum* sp. A voucher specimen was deposited at University of the Ryukyus (Specimen no. 13033105).

### 2.3. Extraction and isolation

The soft coral *Lobophytum* sp. (110.0 g, wet weight) was collected by hand, transported to the lab, and extracted with acetone (500 mL×3). After filtration, extracts were concentrated under reduced pressure to yield a crude acetone extract. The crude extract was partitioned between H<sub>2</sub>O/EtOAc (1:1, 200 mL×2). The EtOAc part was evaporated under vacuum to give a crude extract (1.38 g) that inhibited the growth of Gram-positive bacteria (*Staphylococcus*

*aureus*) and Gram-negative bacteria (*Escherichia coli*). The active crude extract was first chromatographed over silica gel to give seven fractions (Hexane/EtOAc/MeOH gradient). The 2<sup>nd</sup> (362.7 mg) and 3<sup>rd</sup> (413.3 mg) fractions were subjected to further purification by considering their <sup>1</sup>H NMR spectra. An aliquot (200 mg) of the 2<sup>nd</sup> fraction was purified by HPLC (a COSMOSIL Si60 column) using hexane/EtOAc (7:3) to afford a new cembranolide **1** (13.0 mg) and the known cembranolides **4** (11 mg), **5** (44.3 mg), **6** (6.4 mg), and **7** (16.6 mg). An aliquot (86.1 mg) of the 3<sup>rd</sup> fraction was purified by HPLC using hexane/EtOAc (7:3) to afford new cembranolides **2** (2.9 mg), **3** (2.0 mg), and the known cembranolides **8** (22.4 mg) and **9** (1.8 mg).

## 2.4. Spectroscopic data

### 2.4.1. Compound 1

Colorless oil;  $[\alpha]_D^{25.5} -31.42$  (c 0.070 CH<sub>3</sub>OH); FT/IR  $\nu_{\max}$  (film) 1769, 1739, 1668, 1455, 1370 and 1231 cm<sup>-1</sup>; <sup>1</sup>H NMR and <sup>13</sup>C NMR data are listed in Table 1; HRNSIMS  $m/z$  375.2169 [M+H]<sup>+</sup> (calcd. for C<sub>22</sub>H<sub>31</sub>O<sub>5</sub>, 375.2166).

### 2.4.2. Compound 2

Colorless oil;  $[\alpha]_D^{25.6} -7.5$  (c 0.11 CH<sub>3</sub>OH); FT/IR  $\nu_{\max}$  (film) 3453, 1769, 1668, 1455 and 1016 cm<sup>-1</sup>; <sup>1</sup>H and <sup>13</sup>C NMR (CDCl<sub>3</sub>) data are listed in Table 1; HRNSIMS  $m/z$  3333.2054 [M+H]<sup>+</sup> (calcd. for C<sub>20</sub>H<sub>27</sub>O<sub>4</sub>, 333.2060).

### 2.4.3. Compound 3

Colorless oil;  $[\alpha]_D^{25.8} -9.5$  (c 0.12 CH<sub>3</sub>OH); FT/IR  $\nu_{\max}$  (film) 3452, 1769, 1731, 1715, 1651, 1455 and 962 cm<sup>-1</sup>; <sup>1</sup>H and <sup>13</sup>C NMR (CDCl<sub>3</sub>) data are listed in Table 1; HRNSIMS  $m/z$  375.2161 [M+H]<sup>+</sup> (calcd. for C<sub>22</sub>H<sub>31</sub>O<sub>5</sub>, 375.2166).

## 2.5. Calculation of molecular mechanics

Implementation of the MM2 force field [27] in ChemBioOffice Ultra 12.0 software was used to calculate molecular models.

## 2.6. Anti-bacterial assay

The paper disc diffusion method [28] was used to evaluate the antibacterial activity of EtOAc crude extracts of the soft coral *Lobophytum* sp. The bacterial strains were provided by the Biological Resource Center (NRBC), Japan and cultured in an agar medium containing polypeptone (10 g/L), yeast (2 g/L), MgSO<sub>4</sub>·7H<sub>2</sub>O (1 g/L), and agar (15 g/L) prepared in distilled water. The medium was autoclaved and transferred into Petri dishes. The bacterial inoculum was evenly spread on the agar medium. Each methanolic solution of EtOAc crude extracts was perfused (50 µg/25 µL) to a sterilized disc (ϕ 8 mm, Toyo Roshi Kaisha, Ltd.,

Japan). After removal of the solvent, the disc containing EtOAc crude extracts was placed on the seeded bacterial lawn on the agar surface. The plate was incubated for 2 days at 30 °C and then the inhibition zone sizes were measured.

### 2.7. Chemicals and reagents

All chemicals and reagents used in this study were of analytical grade. DMEM was purchased from Sigma-Aldrich (Saint Louis, Missouri, USA). Casein, Griess reagents, 70% perchloric acid and 3-(4,5-dimethylthiazol-2-yl)-2,5-diphenyl-tetrazolium bromide (MTT) were also purchased from Sigma-Aldrich. DMEM without phenol red was purchased from Thermo Fisher Scientific (Massachusetts, USA). Fetal bovine serum (FBS) was purchased from HyClone, Victoria, Australia. Streptomycin/penicillin was purchased from Funakoshi Co. Ltd. (Tokyo, Japan). All other chemicals mentioned hereafter were obtained from either Wako Pure Chemical Industries Ltd. (Osaka, Japan) or Kanto Chemical Co. Inc. (Tokyo, Japan).

### 2.8. Cell Culture

HeLa cell, human lung cancer cell (A549), melanoma cell (B16-F10), and murine macrophage cell (RAW 264.7) were cultured in DMEM supplemented with 10% FBS and 1% penicillin/streptomycin (10,000 U/mL and 100 µg/mL). All cells were incubated at 37 °C in a humidified atmosphere containing 5% CO<sub>2</sub>. In the bioassay, cells were maintained at 80% confluency.

### 2.9. Cell viability

The MTT assay was used to examine the cytotoxicity of compounds 1–3. All cells in exponential growth phase (HeLa, A459, B16-F10, and RAW 264.7) were seeded at a density of 10<sup>5</sup> cells/mL in a 96-well plate. Cells were cultured for 12 h to permit attachment to the wells. Then, the culture medium was removed from the wells and 100 µL fresh culture medium containing different concentrations (5, 10, 25, 50, 100 and 200 µM) of compounds 1–3 was added. After a 48 h incubation, 10 µL MTT solution (0.5 mg/mL in phosphate buffer saline [PBS]) was added to each well followed by incubation at 37 °C for 4 h. To stop the reduction reaction and to dissolve the purple formazan, 100 µL SDS solution (10% in Milli-Q water) was added. A microplate reader (Thermos Scientific Multiskan Go) was used to measure the absorbance of each well at 570 nm. Cytotoxicity results were calculated, compared to the control, and expressed as cell viability (%).

### 2.10. Nitrite Assay

RAW 264.7 cells were used for the nitrate assay. Cells in exponential growth phase were plated on a 24-well plate in DMEM medium at a density of 5 × 10<sup>5</sup> cells/500 µL and cultured for 12 h to attach to the wells. Then, the medium was removed and wells were washed with

PBS followed by addition of 500  $\mu\text{L}$  culture medium containing: (i) control: 495  $\mu\text{L}$  DMEM (without phenol red) and 5  $\mu\text{L}$  LPS (Lipopolysaccharide); and (ii) treatment: 490  $\mu\text{L}$  DMEM (without phenol red), 5  $\mu\text{L}$  LPS and 5  $\mu\text{L}$  compounds (**1–3**) solution (0.124, 0.25, 0.5, 1.0 and 2.0 mM). After a 24 h incubation, 100  $\mu\text{L}$  cultured supernatant were transferred from the 24-well plate to a 96-well plate. An equal volume of Griess reagent (0.1% *N*-(1-naphthyl)-ethylenediamine and 1% sulfanilamide in 5% orthophosphoric acid) was added and incubated at room temperature for 10 min. A microplate reader (Thermos Scientific Multiskan Go) was used to measure the absorbance of each well at 540 nm. Nitrite concentration was determined from a standard curve of sodium nitrite.

### 2.11. Statistical Analysis

Data were expressed as mean  $\pm$  SD. Statistical significance ( $p < 0.01$ ) was analyzed by Student's *t*-tests.

## 3. Results and Discussion

### 3.1. Structure elucidation and characterization of compounds **1–3**

The soft coral, *Lobophytum* sp., was collected from Irabu Island, Okinawa, and extracted with acetone. After evaporation of the acetone under reduced pressure (40  $^{\circ}\text{C}$ ), the thick acetone extract was partitioned between ethyl acetate and water. The ethyl acetate soluble portion (50  $\mu\text{g}/\text{disk}$ ) inhibited the growth of Gram-negative bacteria (*Escherichia coli*) and Gram-positive bacteria (*Staphylococcus aureus*) with inhibition zones 12 and 18 mm, respectively. Repeated chromatography over  $\text{SiO}_2$  followed by normal phase HPLC purification (ethyl acetate/hexane) of the active crude extract resulted in the isolation of new metabolites [(**1**, 0.021%, wet weight), (**2**, 0.012%) and (**3**, 0.008%)] along with known metabolites [(**4**, 0.018%), (**5**, 0.073%), (**6**, 0.01%), (**7**, 0.027%), (**8**, 0.097%) and (**9**, 0.007%)]. The known metabolites were identified by comparison of their NMR data with those reported elsewhere [23–26].

The molecular formula of **1** was determined as  $\text{C}_{22}\text{H}_{30}\text{O}_5$  by high-resolution nanospray-ionization mass (HRNSIMS) [ $m/z$  375.2169 ( $\text{M}+\text{H}$ ) $^+$ , calcd. for  $\text{C}_{22}\text{H}_{31}\text{O}_5$ , 375.2166] containing eight degrees of unsaturation. The infrared (IR) absorption bands at 1769, 1739 and 1668  $\text{cm}^{-1}$  indicated the presence of carbonyl and olefinic groups in the molecule. The  $^1\text{H}$  and  $^{13}\text{C}$  nuclear magnetic resonance (NMR) data (Table 1 and supplementary materials) suggested that **1** is a cembranolide diterpene derivative. The NMR spectra revealed 22 carbon signals consisting of two ester carbonyls [ $\delta_{\text{C}}$  169.8 (C-16) and  $\delta_{\text{C}}$  170.8 (-OAc)], six olefinic carbons [ $\delta_{\text{C}}$  130.6 (C-4),  $\delta_{\text{C}}$  129.3 (C-5) ( $\delta_{\text{H}}$  5.17 t,  $J=7.5$  Hz),  $\delta_{\text{C}}$  124.1 (C-7) ( $\delta_{\text{H}}$  4.96 d,  $J=8.2$  Hz),  $\delta_{\text{C}}$  136.4 (C-8),  $\delta_{\text{C}}$  133.6 (C-15), and  $\delta_{\text{C}}$  125.5 (C-17) ( $\delta_{\text{H}}$  6.50 s, 5.80 s)] including

a terminal olefine, four oxygenated carbons [ $\delta_C$  60.1 (C-12),  $\delta_C$  65.7 (C-13) ( $\delta_H$  2.73 d,  $J=8.9$  Hz), and  $\delta_C$  73.0 (C-2) ( $\delta_H$  5.11 dt,  $J=2.4, 8.9$  Hz),  $\delta_C$  80.8 (C-14) ( $\delta_H$  4.13 dd,  $J=2.4, 8.9$  Hz)] including an epoxide group, one methine [ $\delta_C$  41.7 (C-1) ( $\delta_H$  3.41 m)], five methylenes [ $\delta_C$  39.8 (C-3) ( $\delta_H$  2.38 m, 2.25 m),  $\delta_C$  24.6 (C-6) ( $\delta_H$  2.13 m, 2.30 m),  $\delta_C$  39.8 (C-9) ( $\delta_H$  2.30 m, 1.91 m),  $\delta_C$  24.5 (C-10) ( $\delta_H$  2.13 m, 2.30 m), and  $\delta_C$  52.4 (C-11) ( $\delta_H$  1.26 m, 2.10 m)], an acetylmethyl [ $\delta_C$  21.1 ( $\delta_H$  2.00 s)], and three methyls [ $\delta_C$  17.1 (C-18) ( $\delta_H$  1.67 s),  $\delta_C$  15.8 (C-19) ( $\delta_H$  1.65 s), and  $\delta_C$  16.8 (C-20) ( $\delta_H$  1.30 s)].

Out of the eight degrees of unsaturation in **1**, five were counted for three  $\pi$ -bonds and two ester carbonyls (Table 1). Thus, the remaining three degrees of unsaturation could be assigned to a tricyclic ring system in **1**. Interpretation of correlation spectroscopy (COSY), three major spin systems were established [**a**:  $-\text{CH}(13)-\text{CH}(14)-\text{CH}(1)-\text{CH}(2)-\text{CH}_2(3)$ , **b**:  $-\text{CH}(5)-\text{CH}_2(6)-\text{CH}(7)$ , and **c**:  $-\text{CH}_2(9)-\text{CH}_2(10)-\text{CH}_2(11)$ ] (Figure 2).

The heteronuclear-multiple-bond-connectivity (HMBC) correlations of olefinic methyls ( $\text{H}_3$ -18/C-3, -4, -5 and  $\text{H}_3$ -19/C-7, -8, -9) and methyl ( $\text{H}_3$ -20/C-11, -12, -13) easily completed a 14-membered cembrane ring. Additional HMBC correlations from an oxymethine (H-2/C-16) and exomethylene ( $\text{H}_2$ -17/C-1, -15, -16) finally completed a lactone ring attachment in the 14-membered cembrane. The acetoxy group was assigned at C-14 (HMBC H-14/-OAc). To complete the tricyclic ring in **1**, an epoxide ring was assigned between C-12/C13 (HMBC  $\text{H}_3$ -20/C-12, -13). Thus, the planar structure of **1** was established as a tricyclic ring having a 14-membered cembrane, an  $\alpha$ -methylene- $\gamma$ -lactone, and a trisubstituted epoxide ring.

Based on relatively upfield  $\delta_C$  values of  $\text{CH}_3$ -18 and  $\text{CH}_3$ -19 ( $< 20$  ppm) [29, 30], the two double bonds at C-5 and C-7 were assigned as *E* geometry. Nuclear overhauser enhancement spectroscopy (NOESY) correlation between H-1 and H-2 indicated a *cis*-fused junction of the two rings ( $\alpha$ -methylene- $\gamma$ -lactone and 14-membered rings). In addition, the NOESY correlations among protons H-1/H-13, -14, -17; H-2/H-3, -14; H-14/H-2, -13, -20 and  $\text{H}_3$ -20/H-13, -14 implied that these protons reside on the same face of the molecule (Figure 3). Moreover, the coupling constant ( $J= 8.9$  Hz) at H-13, H-14 and H-2 supported that the vicinal protons were either in an anticoplanar or eclipse relationship. The relationship should be correct because these signals showed a strong NOESY correlation with each other.



The molecular formula of **2** was established as  $C_{20}H_{28}O_4$  by HRNSIMS [ $m/z$  333.2054 (M+H)<sup>+</sup>, calcd. for  $C_{20}H_{29}O_4$ , 333.2060] with seven degrees of unsaturation. The IR absorption bands at 1769 and 1668  $cm^{-1}$  indicated the presence of carbonyl and olefinic groups. The NMR data (Table 1) suggested that **2** was also a cembranolide diterpene derivative having 20 carbon signals: an ester carbonyl [ $\delta_C$  170.1 (C-16)], eight olefinic carbons [ $\delta_C$  123.2 (C-3) ( $\delta_H$  5.13 d,  $J=9.5$  Hz),  $\delta_C$  144.9 (C-4),  $\delta_C$  123.4 (C-7) ( $\delta_H$  4.90 t,  $J=7.2$  Hz),  $\delta_C$  134.4 (C-8),  $\delta_C$  129.3 (C-10) ( $\delta_H$  5.44 ddd,  $J=16.0, 7.5, 7.5$  Hz),  $\delta_C$  131.6 (C-11) ( $\delta_H$  5.29 d,  $J=16.0$  Hz),  $\delta_C$  134.6 (C-15), and  $\delta_C$  122.7 (C-17) ( $\delta_H$  6.42 d,  $J=3.3$  Hz, 5.79 d,  $J=3.0$  Hz)] including a terminal olefine, three oxygenated carbons [ $\delta_C$  76.6 (C-2) ( $\delta_H$  5.02 t,  $J=9.5$  Hz),  $\delta_C$  84.4 (C-12), and  $\delta_C$  65.5 (C-14) ( $\delta_H$  4.01 t,  $J=6.7$  Hz)], one methine [ $\delta_C$  54.5 (C-1) ( $\delta_H$  2.70 m)], four methylenes [ $\delta_C$  39.6 (C-5) ( $\delta_H$  2.31 m, 2.09 m),  $\delta_C$  24.1 (C-6) ( $\delta_H$  2.23 m),  $\delta_C$  42.5 (C-9) ( $\delta_H$  2.63 m), and  $\delta_C$  44.0 (C-13) ( $\delta_H$  2.48 dd,  $J=15.2, 6.7$  Hz; 1.90 d,  $J=15.2$  Hz)], and three methyls [ $\delta_C$  15.8 (C-18) ( $\delta_H$  1.73 s),  $\delta_C$  17.3 (C-19) ( $\delta_H$  1.64 s), and  $\delta_C$  25.6 (C-20) ( $\delta_H$  1.40 s)].

Both **1** and **2** showed comparable NMR data. However, the presence of two additional  $sp^2$  carbons along with the lack of an oxygenated methine and acetyl carbons were clearly observed in the  $^{13}C$  NMR spectrum of **2**. Four  $\pi$ -bonds and one ester carbonyl counted for five degrees of unsaturation. Thus, **2** might be a bicyclic molecule. Interpretation of COSY and HMBC correlations revealed a planer structure of **2** (Figure 2). Unlike **1** ( $\Delta^{4,5}$ ), a strong COSY correlation (H-2/H-3) indicated that the double bond was indeed at C-3 in **2** ( $\Delta^{3,4}$ ). Thus, the planar structure of **2** was established as a bicyclic ring consisting of a 14-membered cembrane and an  $\alpha$ -methylene- $\gamma$ -lactone ring.

Like **1**, *E* geometries of the double bonds at C-3 and C-7 were assigned in **2**, and a *cis*-fused ring junction between  $\alpha$ -methylene- $\gamma$ -lactone and 14-membered ring was assigned by NOESY correlation (H-1 and H-2). The coupling constant ( $J=16.0$  Hz) between H-10 and H-11 allowed the *E* geometry of the double bond at C-10. Additional NOESY correlations (H-1/H-2, -13<sub>b</sub>, -14, -17; H-2/H-1, -14, -18; H-14/H-1 -2, -13<sub>b</sub>, -20 and H<sub>3</sub>-20/H-13, -14) implied that these protons exist on the same plane of the molecule (Figure 3). The vicinal coupling ( $J=9.5$  Hz at H-2 and  $J=6.7$  Hz at H-14) are also support the strong NOESY correlations of H-2 and H-14 protons are *cis* orientation.

Compound **3** had the same molecular formula  $C_{22}H_{30}O_5$  as **1** [HRNSIMS,  $m/z$  375.2161 (M+H)<sup>+</sup>, calcd. for  $C_{22}H_{31}O_5$ , 375.2166] with eight degrees of unsaturation. The IR absorption bands (1769, 1715 and 1668  $cm^{-1}$ ) of **3** suggested the presence of an  $\alpha$ -methylene- $\gamma$ -lactone and an ester moiety as in **1**. The  $^1H$  and  $^{13}C$  NMR data (Table 1) showed 22 carbon signals as in **1**. The NMR data of **3** compared with those of **1** showed close similarity with

those of **2**. The COSY correlations supported major spin systems [**a**:  $-\text{CH}_2(14)-\text{CH}(1)-\text{CH}(2)-\text{CH}(3)$ ; **b**:  $-\text{CH}_2(5)-\text{CH}_2(6)-\text{CH}(7)$ , and **c**:  $-\text{CH}(9)-\text{CH}(10)-\text{CH}(11)$ ] (Figure 2). Like **1** and **2**, the HMBC correlations ( $\text{H}_3-18/\text{C}-3, -4, -5$ ;  $\text{H}_3-19/\text{C}-7, -8, -9$ ;  $\text{H}_3-20/\text{C}-11, -12, -13$ ;  $\text{H}-7/\text{C}-5$ ) completed a 14-membered cembrane ring. Further, HMBC cross-peaks from methylenes ( $\text{H}_2-13/\text{C}-1, -12$ ;  $\text{H}_2-14/\text{C}-1, -2$ ), an oxymethine ( $\text{H}-2/\text{C}-16$ ), and an exomethylene ( $\text{H}_2-17/\text{C}-1, -15, -16$ ) finally completed an  $\alpha$ -methylene- $\gamma$ -lactone attachment in the 14-membered ring in **3**. An HMBC correlation ( $\text{H}-8/\text{OAc}$ ) confirmed the acetoxy group attachment at C-8. Thus, the planar structure of **3** was established (Figure 2).

As in **1** and **2**, relatively upfield values of  $\text{CH}_3-18$  ( $\delta_{\text{C}} 16.3$ ) and  $\text{CH}_3-19$  ( $\delta_{\text{C}} 10.4$ ) indicated *E* geometry of the double bonds at C-3 and C-7 and coupling constant ( $J=15.5$  Hz) between H-10 and H-11 allowed the *E* geometry of the double bond at C-10 in **3**. Based on NOESY correlation between H-1 and H-2, a *cis-fused* ring junction between  $\alpha$ -methylene- $\gamma$ -lactone and 14-membered ring was concluded as in **1** and **2**. In addition, NOESY correlations between H-2/H-14a; H-14a/H-1, -2, -9 and H-9/H-20 implied that these protons remain on the same face of the molecule (Figure 3).

The new isolates were evaluated for cytotoxicity against HeLa, A459, B16-F10, and RAW 264.7 cells (Table 2). The new compounds **1–3** exhibited moderate to mild cytotoxicity (Figures 4–6). The anti-inflammatory activity of **1–3** was also evaluated in LPS-stimulated RAW 264.7 macrophage cells at non-cytotoxic concentrations (Figure 7). These compounds suppressed NO production in a dose-dependent manner, indicating that they had an anti-inflammatory effect. NO production inhibition was relatively minor ( $\text{IC}_{50}$ , at 24 h, for **1–3** were 10.67, 13.92 and 14.02  $\mu\text{M}$ , respectively) compared with alcyonolide congeners (2–8  $\mu\text{M}$ ) [31] and carotenoids (6.25–25  $\mu\text{M}$ ), such as fucoxanthin and fucoxanthinol [32].

#### 4. Conclusion

Three new cembranolide diterpenoids (**1–3**) and the known diterpenoids (**4–9**) were isolated from the Okinawan soft coral, *Lobophytum* sp. Their structures were established by spectroscopic analysis (NMR, IR, and MS) and compared with those reported previously. The new isolates showed cytotoxicity against HeLa, A459, B16-F10, and RAW 264.7 cells and an anti-inflammatory effect in LPS-stimulated RAW 264.7 macrophage cells. Among them, **1** exhibited moderate cytotoxicity [ $\text{IC}_{50}$  5.99–10.83  $\mu\text{M}$ ] and anti-inflammatory activity [ $\text{IC}_{50}$  7.75  $\mu\text{M}$ ]. The epoxide group in **1** might be responsible for its mild bioactivities. Absolute stereochemistry of the asymmetric centers of these compounds remains to be solved.

Decomposition of compound **2** have prevented us to determine its absolute stereochemistry by modified Mosher's method.

**Acknowledgments:** This study was supported by the Okinawa Institute of Science and Technology Graduate University (OIST). The bioassay work was done at OIST and performed by P.K.R. as an OIST researcher. The authors are also thankful to Dr. Michael C. Roy (Research Support Division, OIST) for HRMS analysis and technical assistance and to Dr. Steven D. Arid (OIST) for language editing. We thank the IRC, the University of the Ryukyus, for analytical services.

**Conflicts of Interest:** The authors declare no conflict of interest.

### Supplementary Materials:

Supplementary materials can be assessed at: [http://www.\\*\\*\\*.com/](http://www.***.com/)

### References

- [1] J.W. Blunt, A.R. Carroll, B.R. Copp, R.A. Davis, R.A. Keyzers, M.R. Prinsep, Marine natural products. *Nat. Prod. Rep.* 35 (2018) 8–53.
- [2] R.Y.R. Burhan, E.M.M. Putri, Y. Zetra, R. Herdhiansyah, M.Y. Putra, Terpenes from soft corals of the genus *Lobophytum* (Alcyoniidae): Chemistry and biological activities. *J. Chem. Pharm. Res.* 6 (2014) 585–595.
- [3] K.-H. Lai, W.-J. You, C.-C. Lin, M. El-Shazly, Z.-J. Liao, J.-H. Su, Anti-inflammatory cembranoids from the soft coral *Lobophytum crassum*. *Mar. Drugs* 15 (2017) 327.
- [4] S.K. Wang, C.-Y. Duh, Y.C. Wu, Y. Wang, M.C. Cheng, K. Soong, L.S. Fang, Studies on Formosan soft corals, II. Cytotoxic cembranolides from the soft coral *Lobophytum michaelae*. *J. Nat. Prod.* 55 (1992) 1430–1435.
- [5] S.K. Wang, C.-Y. Duh, New cytotoxic cembranolides from the soft coral *Lobophytum michaelae*. *Mar. Drugs* 10 (2012) 306–318.
- [6] L.T. Wang, S.K. Wang, K. Soong, C.-Y. Duh, New cytotoxic cembranolides from the soft coral *Lobophytum michaelae*. *Chem. Pharm. Bull.* 55 (2007) 766–770.
- [7] S.J. Coval, R.W. Patton, J.M. Petrin, L. James, M.L. Rothofsky, S. Lin, M. Patel, J.K. Reed, A.T. McPhil, W.R. Bishop, A cembranolide diterpene farnesyl protein transferase inhibitor from the marine soft corals *Lobophytum cristagalli*. *Bioorg. Med. Chem. Lett.* 6 (1996) 909–912.

- [8] R. Higuchi, T. Miyamoto, K. Yamada, T. Komori, Cytotoxic and ichthyotoxic compounds from marine Opisthobranchia and soft coral. *Toxicon* 36 (1998) 1703–1705.
- [9] G.F. Matthée, G.M. König, A.D. Wright, Three new diterpenes from the marine soft coral *Lobophytum crassum*. *J. Nat. Prod.* 61 (1998) 237–240.
- [10] C.-Y. Duh, S.K. Wang, B.T. Huang, C.F. Dai, Cytotoxic cembrenolide diterpenes from the Formosan soft coral *Lobophytum crassum*. *J. Nat. Prod.* 63 (2000) 884–885.
- [11] S.Y. Cheng, S.K. Wang, C.-Y. Duh, Secocrassumol, a seco-cembranoid from the Dongsha Atoll soft coral *Lobophytum crissum*. *Mar. Drugs* 12 (2014) 6028–6037.
- [12] S.-Y. Cheng, P.-W. Chen, H.-P. Chen, S.-K. Wang, C.-Y. Duh, New cembranolides from the Dongsha Atoll soft coral *Lobophytum durum*. *Mar. Drugs* 9 (2011) 1307–1318.
- [13] M.A. Rashid, K.R. Gustafson, M.R. Boyd, Hiv-inhibitory cembrane derivatives from a Philippines collection of the soft coral *Lobophytum species*. *J. Nat. Prod.* 63 (2000) 531–533.
- [14] P. Yan, Z. Deng, L.V. Ofwegen, P. Proksch, W. Lin, Lobophytones O-T, new biscembranoids and cembranoid from soft coral *Lobophytum pauciflorum*. *Mar. Drugs* 8 (2010) 2837–2848.
- [15] P. Yan, Z. Deng, L. Van Ofwegen, P. Proksch, W. Lin, Lobophytones U-Z<sub>1</sub>, Biscembranoids from the Chinese soft coral *Lobophytum pauciflorum*. *Chem. Biodivers.* 8 (2011) 1724–1734.
- [16] S.T. Lin, S.K. Wang, S.Y. Cheng, C.-Y. Duh, Lobocrasol, a new diterpenoid from the soft coral *Lobophytum crassum*. *Org. Lett.* 14 (2009) 3012–3014.
- [17] S.Y. Cheng, Z.H. Wen, S.F. Chiou, C.H. Hsu, S.K. Wang, C.F. Dai, M.Y. Chiang, C.-Y. Duh, Durumolides A–E, anti-inflammatory and antibacterial cembranolides from the soft coral *Lobophytum durum*. *Tetrahedron* 64 (2008) 9698–9704.
- [18] S.Y. Cheng, Z.H. Wen, S.K. Wang, S.F. Chiou, C.H. Hsu, C.F. Dai, C.-Y. Duh, Anti-inflammatory cembranolides from the soft coral *Lobophytum durum*. *Bioorg. Med. Chem.* 17 (2009) 3763–3769.
- [19] C.-Y. Kao, J.-H. Su, M.-C. Lu, T.-L. Hwang, W.-H. Wang, J.-J. Chen, J.-H. Sheu, Y.-H. Kuo, C.-F. Weng, L.-S. Fang, Lobocrassins A–E: New cembrane-type diterpenoids from the soft coral *Lobophytum crassum*. *Mar. Drugs* 9 (2011) 1319–1331.

- [20] C.-H. Lee, C.-Y. Kao, S.-Y. Kao, C.-H. Chang, J.-H. Su, T.-L. Hwang, Y.-H. Kuo, Z.-H. Wen, P.-J. Sung, Terpenoids from the octocorals *Menella* sp. (Plexauridae) and *Lobophytum crassum* (Alcyonacea). *Mar. Drugs* 10 (2012) 427–438.
- [21] K. Yamada, K. Ryu, T. Miyamoto, R. Higuchi, Three new cembrane-type diterpenoids from the soft coral *Lobophytum schoedei*. *J. Nat. Prod.* 60 (1997) 798–801.
- [22] B. Tursch, J.C. Braekman, D. Daloz, M. Hérin, R. Karlsson, Chemical studies of marine invertebrates. X. Lobophytolide, a new cembranolide diterpene from the soft coral *Lobophytum cristagalli* (coelenterata, octocorallia, alcyonacea). *Tetrahedron Lett.* 15 (1974) 3769–3772.
- [23] M. Wanzola, T. Furuta, Y. Kohno, S. Fukumitsu, S. Yasukochi, K. Watari, C. Tanaka, R. Higuchi, T. Miyamoto, Four new cembrane diterpenes isolated from an Okinawan soft coral *Lobophytum crassum* with inhibitory effects on nitric oxide production. *Chem. Pharm. Bull.* 58 (2010) 1203–1209.
- [24] Y. Yamada, S. Suzuki, K. Iguchi, K. Hosaka, H. Kikuchi, Y. Tsukitani, H. Horiai, F. Shibayama, Studies on marine natural products. I. 13-membered carbocyclic cembranolide diterpenes from an Okinawan soft coral *Lobophytum pauciflorum* (Ehrenberg). *Chem. Pharm. Bull.* 27 (1979) 2394–2397.
- [25] Y. Yamada, S. Suzuki, K. Iguchi, H. Kikuchi, Y. Tsukitani, H. Horiai, Studies on marine natural products. III.<sup>1)</sup> Two new cembranolide diterpenes from the soft coral *Lobophytum pauciflorum* (Ehrenberg). *Chem. Pharm. Bull.* 28 (1980) 2035–2038.
- [26] M. Kobayashi, T. Ishizaki, N. Miura, H. Mitsuhashi, Marine terpenes and terpenoids. III.<sup>1)</sup> Isolation and structures of two cembrane diols from the soft coral *Sinularia mayi*. *Chem. Pharm. Bull.* 35 (1987) 2314–2318.
- [27] N.L. Allinger, Conformational analysis. 130. MM2. A hydrocarbon force field utilizing V1 and V2 torsional terms. *J. Am. Chem. Soc.* 99 (1977) 8127–8134.
- [28] H. Ericsson, The paper disc method for determination of bacterial sensitivity to antibiotics studies on the accuracy of the technique. *Scand. J. Clin. Lab. Invest* 12 (1960) 408–413.
- [29] E. Breitmaier, W. Voelter, *Carbon-13 NMR Spectroscopy*; VCH: New York, NY, USA, (1987) 192–196.
- [30] S.-K. Wang, C.-Y. Duh, Y.-C. Wu, Y. Wang, M.-C. Cheng, K. Soong, L.-S. Fang, Cytotoxic cembranolides from the soft coral *Lobophytum michaelae*. *J. Nat. Prod.* 55 (1992) 1430–1435.

- [31] J. Taira, E. Tsuchida, M. Uehara, Y. Kinjyo, P.K. Roy, K. Ueda, Dual biological functions of the apoptotic activity and anti-inflammatory effect by alcyonolide congeners from the Okinawan soft coral, *Cespitularia* sp. *Bioorg. Med. Chem. Lett.* 25 (2015) 4496–4499.
- [32] J. Taira, M. Uehara, Anti-inflammatory effect of fucoxanthinol as bioavailable marine carotenoid on LPS- stimulated RAW264.7 macrophages through iNOS suppression and nitrogen radical-scavenging. *World J. Pharm. Sci.* 3 (2015) 1747–1754.

ACCEPTED MANUSCRIPT

**Table 1.** <sup>1</sup>H (500 MHz) and <sup>13</sup>C (125 MHz) NMR data for **1–3** in CDCl<sub>3</sub>.

C. No	<b>1</b>		<b>2</b>		<b>3</b>	
	$\delta_{\text{H}}$ (mult. J/Hz)	$\delta_{\text{C}}$	$\delta_{\text{H}}$ (mult. J/Hz)	$\delta_{\text{C}}$	$\delta_{\text{H}}$ (mult. J/Hz)	$\delta_{\text{C}}$
1	3.41 (m)	41.7 (CH)	2.70 (m)	54.5 (CH)	3.31 (m)	39.3 (CH)
2	5.11 (dt, 2.4, 8.9)	73.0 (CH)	5.02 (t, 9.5)	76.6 (CH)	5.50 (m)	77.0 (CH)
3	2.38 (m)	39.8 (CH <sub>2</sub> )	5.13 (d, 9.5)	123.2 (CH)	4.99 (d, 8.5)	120.2 (CH)
	2.25 (m)					
4		130.6 (C)		144.9 (C)		142.6 (C)
5	5.17 (t, 7.5)	129.3 (CH)	2.09 (m)	39.6 (CH <sub>2</sub> )	2.78 (m)	43.4 (CH <sub>2</sub> )
			2.31 (m)			
6	2.30 (m)	24.6 (CH <sub>2</sub> )	2.23 (m)	24.1 (CH <sub>2</sub> )	2.35 (m)	22.7 (CH <sub>2</sub> )
	2.13 (m)				1.96 (m)	
7	4.96 (d, 8.2)	124.1 (CH)	4.90 (t, 7.2)	123.4 (CH)	5.31 (m)	130.7 (CH)
8		136.4 (C)		134.4 (C)		132.1 (C)
9	2.30 (m)	39.8 (CH <sub>2</sub> )	2.63 (m)	42.5 (CH <sub>2</sub> )	5.00 (d, 8.5)	77.0 (CH)
	1.91 (m)					
10	2.30 (m)	24.5 (C)	5.44 (ddd, 16.0, 7.5, 7.5)	129.3 (CH)	5.81 (ddd, 15.5, 8.5, 6.6)	128.9 (CH)
	2.13 (m)					
11	2.10 (m)	52.4 (CH <sub>2</sub> )	5.29 (d, 16.0)	131.6 (CH)	5.46 (d, 15.5)	136.5 (CH)
	1.26 (m)					
12		60.1 (C)		84.4 (C)		84.6 (C)
13	2.73 (d, 8.9)	65.7 (CH)	2.48 (dd, 15.2, 6.7) <sup>a</sup>	44.0 (CH <sub>2</sub> )	1.78 (m)	37.9 (CH <sub>2</sub> )
			1.90 (d, 15.2) <sup>b</sup>		1.72 (m)	
14	4.13 (dd, 2.4, 8.9)	80.8 (CH)	4.01 (t, 6.7)	65.5 (CH)	2.20 (m) <sup>a</sup>	32.8 (CH <sub>2</sub> )
					1.52 (m) <sup>b</sup>	
15		133.6 (C)		134.6 (C)		138.3 (C)
16		169.8 (C)		170.1 (C)		170.3 (C)
17	6.50 (s)	125.5 (CH <sub>2</sub> )	6.42 (d, 3.3)	122.7 (CH <sub>2</sub> )	6.29 (d, 3.5)	121.1 (CH <sub>2</sub> )
	5.80 (s)		5.79 (d, 3.0)		5.52 (d, 3.5)	
18	1.67 (s)	17.1 (CH <sub>3</sub> )	1.73 (s)	15.8 (CH <sub>3</sub> )	1.91 (s)	16.3 (CH <sub>3</sub> )
19	1.65 (s)	15.8 (CH <sub>3</sub> )	1.64 (s)	17.3 (CH <sub>3</sub> )	1.61 (s)	10.4 (CH <sub>3</sub> )
20	1.30 (s)	16.8 (CH <sub>3</sub> )	1.40 (s)	25.6 (CH <sub>3</sub> )	1.42 (s)	20.8 (CH <sub>3</sub> )
OAc	2.00 (s)	21.1 (CH <sub>3</sub> )			2.05 (s)	21.4 (CH <sub>3</sub> )
OAc		170.8 (C)				171.1 (C)

**Table 2.** Cytotoxicity effect of compounds **1–3**.

Compound	Cytotoxicity (IC <sub>50</sub> , $\mu\text{M}$ , 48 h)			
	HeLa cell	A549 cell	B16-F10 cell	RAW 264.7 cell
<b>1</b>	7.81	9.30	10.83	5.99
<b>2</b>	49.33	54.09	92.36	43.74
<b>3</b>	136.04	188.00	175.88	45.22

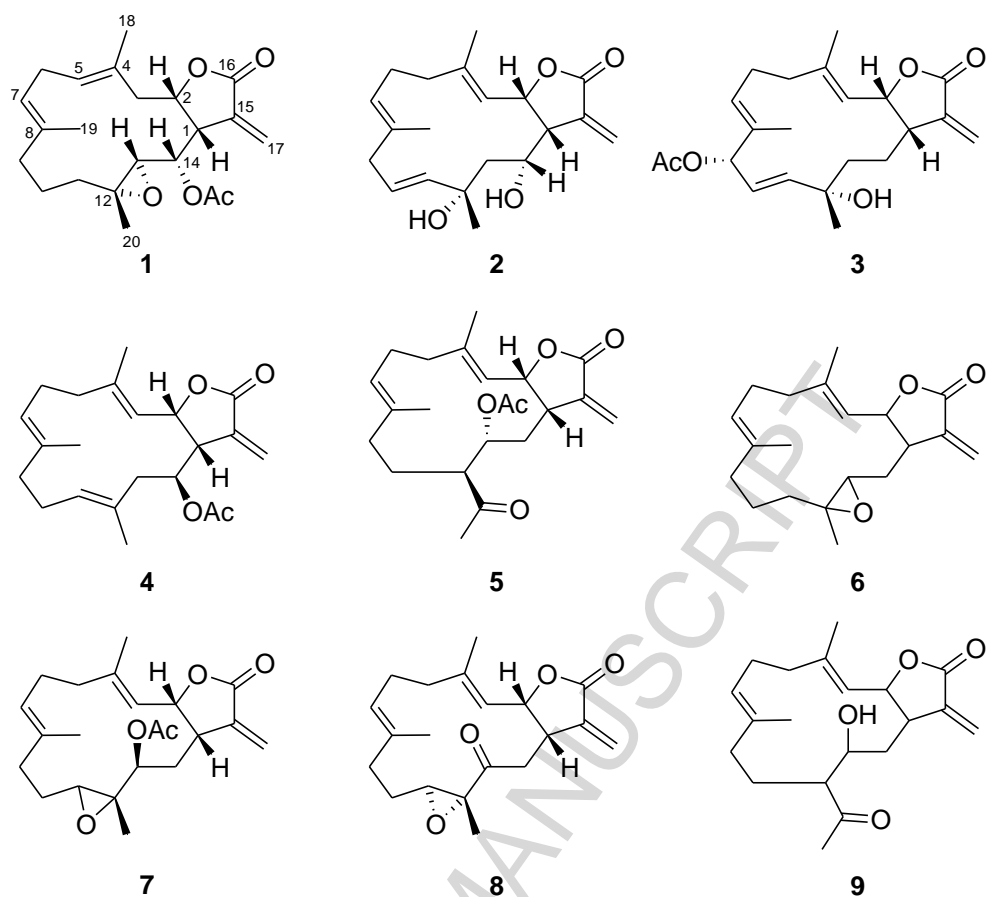
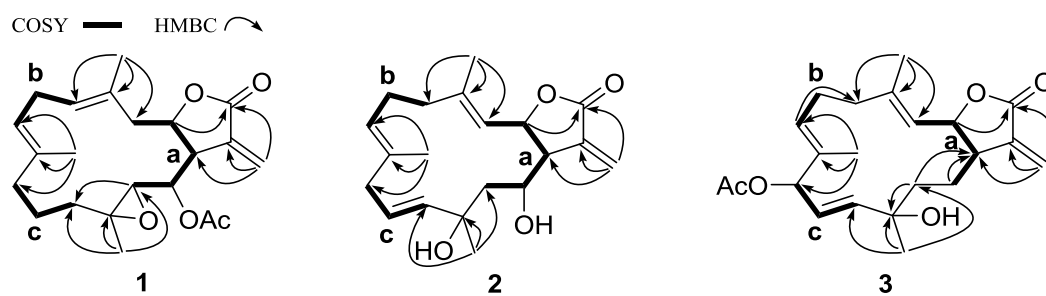
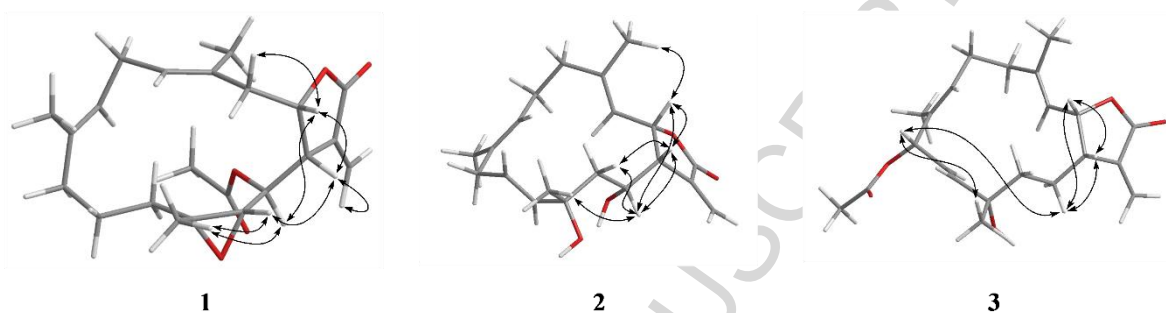


Figure 1. Structures of compounds 1–9

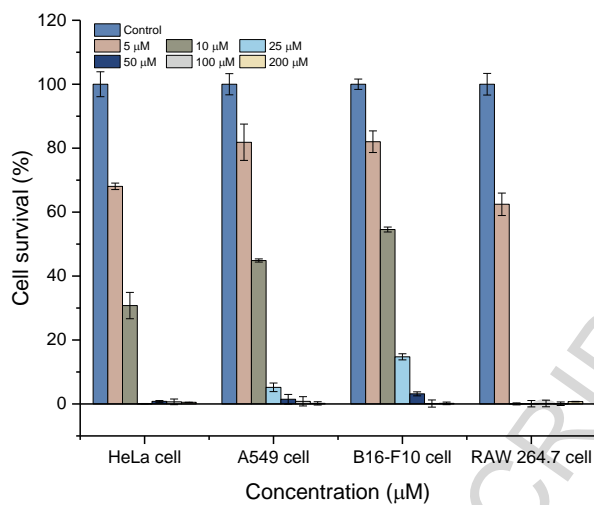




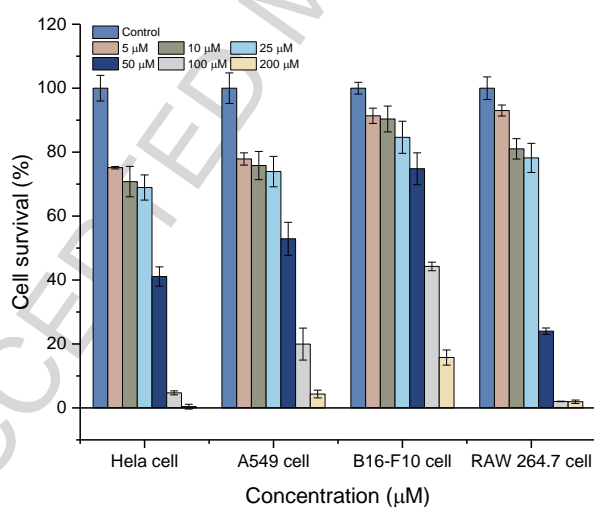
**Figure 2.** Partial structures of **1–3** based on COSY (bold line) and key HMBC correlations (arrow).



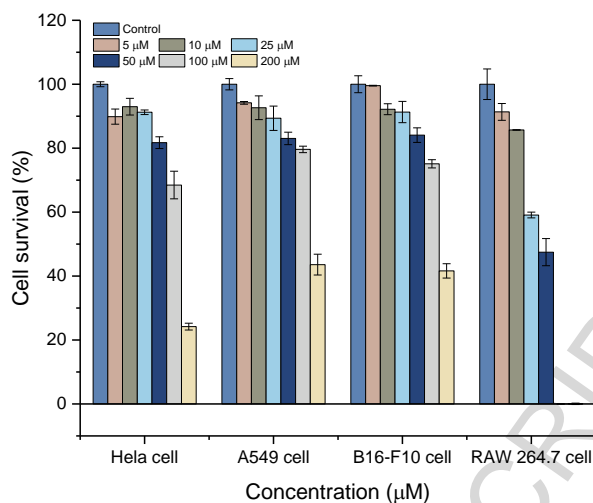
**Figure 3.** Computer-generated models of **1–3** using MM2 force calculations and key NOESY correlations.



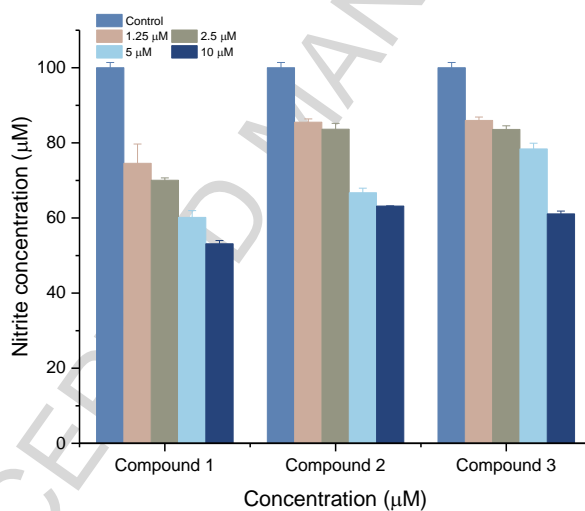
**Figure 4.** Cytotoxicity of **1** against HeLa, A459, B16-F10, and RAW 264.7 cells. Data represent the mean  $\pm$  standard error of three replicates.



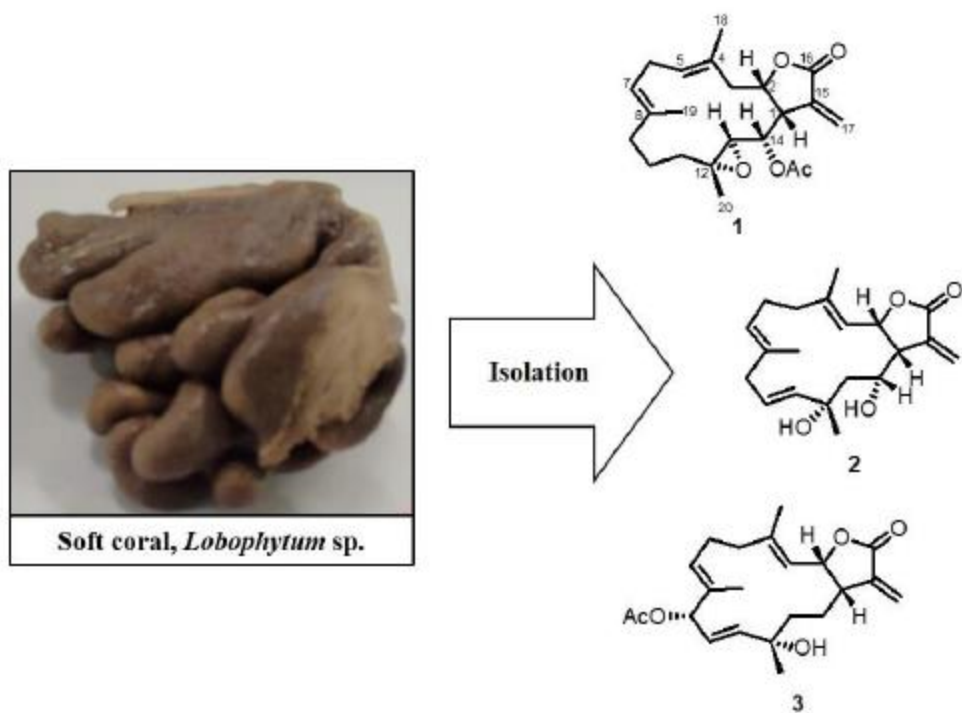
**Figure 5.** Cytotoxicity of **2** against HeLa, A459, B16-F10 and RAW 264.7 cells. Data represent the mean  $\pm$  standard error of three replicates.



**Figure 6.** Cytotoxicity of **3** against HeLa, A459, B16-F10 and RAW 264.7 cells. Data represent the mean  $\pm$  standard error of three replicates.



**Figure 7.** Inhibition of NO production in LPS-induced RAW 264.7 macrophage cells. Data represent the mean  $\pm$  standard error of three replicates.



Graphical abstract

ACCEPTED MANUSCRIPT