



# Seed rain and establishment in successional forests in Chiapas, Mexico

## Lluvia de semillas y establecimiento en comunidades sucesionales en Chiapas, México

Fernando Carrillo Arreola<sup>1,2</sup> , Pedro F. Quintana-Ascencio<sup>1,3,4</sup> , Neptalí Ramírez-Marcial<sup>1</sup> , Mario González-Espinosa<sup>1</sup> 

### Abstract:

**Background and Aims:** Agriculture in the tropics is decreasing, fragmenting and altering forests and forest landscapes. We hypothesized differences in species richness and dominance of life forms in the seed rain and in richness and survival in the recruit assemblages among mature forests, mid-successional forests, early successional forests, pastures and *milpa* fields (arable lands with maize) surrounded by natural and human disturbed habitats.

**Methods:** Samples of seeds and plants were collected during a year in Lacanjá-Chansayab and Bonampak-Bethel, in the buffer zone of the Montes Azules Biosphere Reserve, Selva Lacandona, Chiapas, Mexico. We deployed 14 seed traps in 12 sites representing a gradient of vegetation succession (2 sites × 6 habitats × 14 traps; n = 168 traps). Independently, to assess changes in recruitment and early survival, we established 15 quadrats (0.5 × 2.0 m) in each of the studied forests (2 sites × 3 habitats × 15 quadrats; n = 90 quadrats).

**Key results:** We collected ~13,600 seeds of 144 species from 48 botanical families. Mature forests had the highest seed rain species richness (60-61) and pastures (14-11) the lowest. We observed a decline in species richness and a change in dominance of life forms in the seed rain from less disturbed to most perturbed habitats. Mature forests included seeds of diverse tree species while the assemblage in pastures was dominated by seeds of few grass species. Intensive traditional *milpa* fields showed homogeneous seed assemblages. For the new recruits, we recorded ~3,416 individuals (<0.5 m height) of 238 morphospecies in 42 families, 129 were identified to species level. The largest number of species occurred in mature and mid-successional stands compared to early forests. Annual survival of recruits was higher in mid- and late successional forests than in early ones.

**Conclusions:** We document species loss and widespread simplification and homogenization in community composition due to pervasive effect of humans on remnant tropical lowland forests.

**Key words:** forest landscapes, habitat heterogeneity, human disturbance, Lacandon Maya, swidden agriculture, tropical rainforest.

### Resumen:

**Antecedentes y Objetivos:** La agricultura en los trópicos reduce, fragmenta y altera los bosques y los paisajes forestales. Evaluamos la riqueza de especies y la dominancia de formas de vida en la lluvia de semillas, y la abundancia y supervivencia anual de nuevos reclutas en bosques maduros, medianamente maduros, bosques tempranos, potreros y campos de cultivo en ambientes naturales y humanizados. Pronosticamos diferencias en composición y número de semillas y de reclutas en función de los diferentes hábitats y de las matrices de vegetación que los circundan.

**Métodos:** Durante un año se colectaron muestras de semillas y plantas en Lacanjá-Chansayab y Bonampak-Bethel, ambas dentro de la zona de amortiguamiento de la Reserva de la Biosfera de Montes Azules, Selva Lacandona, Chiapas, México. Para la lluvia de semillas, instalamos 14 trampas en sitios que representan el gradiente de sucesión en la vegetación local (2 sitios × 6 hábitats × 14 trampas; n = 168). Independientemente, para evaluar los cambios en reclutamiento y supervivencia tempranas se establecieron 15 cuadros (0.5 × 2.0 m) en cada comunidad arbolada (2 sitios × 3 comunidades × 15 cuadros; n = 90).

**Resultados clave:** Colectamos ~13,600 semillas de 144 especies pertenecientes a 48 familias botánicas. Los bosques maduros presentaron la mayor riqueza (60-61) y los potreros la menor (14-11). Observamos una reducción en la riqueza de especies y un cambio en la dominancia de las formas de vida a través del gradiente sucesional. Los bosques incluyeron principalmente semillas de árboles, mientras los potreros estuvieron dominados por unas pocas especies de gramíneas. La lluvia de semillas en las áreas agrícolas se caracterizó por un reducido número de especies generalistas. Para los reclutas de especies leñosas, se registraron ~3416 individuos (<0.5 m de altura) de 238 morfoespecies, de las cuales 129 fueron identificadas a nivel de especie en 42 familias. El mayor número de reclutas ocurrió en bosques maduros comparados con bosques tempranos y su supervivencia fue mayor en los bosques maduros.

**Conclusiones:** Documentamos la progresiva simplificación y homogenización en la composición florística y el efecto generalizado de los humanos en las regiones tropicales.

**Palabras clave:** agricultura trashumante, heterogeneidad del hábitat, mayas lacandones, paisajes forestales, perturbación humana, selva alta perennifolia.

<sup>1</sup>El Colegio de la Frontera Sur, Departamento de Conservación de la Biodiversidad, 29290 San Cristóbal de Las Casas, Chiapas, Mexico.

<sup>2</sup>Universidad Nacional Autónoma de México, Facultad de Ciencias, 04510 Cd. Mx., Mexico.

<sup>3</sup>University of Central Florida, Department of Biology, 4000 Central Florida Boulevard, 32816 Orlando, Florida, USA.

<sup>4</sup>Author for correspondence: [pedro.quintana-ascencio@ucf.edu](mailto:pedro.quintana-ascencio@ucf.edu)

Received: September 28, 2019.

Reviewed: February 24, 2020.

Accepted by Moisés Méndez Toribio: April 13, 2020.

Published Online first: May 21, 2020.

Published: Acta Botanica Mexicana 127 (2020).

To cite as:

Carrillo Arreola, F., P. F. Quintana-Ascencio, N. Ramírez-Marcial and M. González-Espinosa. 2020. Seed rain and establishment in successional forests in Chiapas, Mexico. Acta Botanica Mexicana 127: e1618. DOI: 10.21829/abm127.2020.1618



This is an open access article under the Creative Commons 4.0 Attribution-NonCommercial Licence (CC BY-NC 4.0 International).

e-ISSN: 2448-7589

## Introduction

During the second half of the 20<sup>th</sup> century, extensive land clearing for the establishment of agricultural fields and pastures for livestock along with significant changes in agricultural practices decreased, fragmented and altered at growing rates forests in most tropical regions of the world (Gómez-Pompa et al., 1972, 1974; Janzen 1973, 1983, 1986; Kellman et al., 1998; Dirzo and Raven 2003; Brook et al., 2008; Bradshaw et al. 2009; Wright, 2010). Most current remnant tropical forests occur within protected areas surrounded by complex mosaics of vegetation with variable degrees of conservation and transformation by humans (Ricketts, 2001; Vandermeer and Carvajal, 2001; Vieira et al., 2008; Laurance et al., 2014; Chazdon, 2014). These heterogeneous landscapes include a large proportion of the world's biodiversity which is increasingly threatened by changes in community composition, structure and dynamics, with subsequent alteration of their functioning and biogeochemical cycles (Medellín, 1994; Huston, 1994; Grubb, 1996; Lindenmayer and Fisher, 2006). Understanding the ecological consequences of forest habitat degradation and fragmentation on forest landscape dynamics is fundamental to design better agricultural, management and forest conservation practices (Harrison and Bruna, 1998; Chapman et al., 2003; Lindenmayer and Fisher, 2007; Krupnick, 2013).

The ecological changes in southeastern Mexico exemplify the consequences of social and economic policies implemented in many tropical regions of the world. De Vos (2002) documents the changes during the last 150 years in the use of natural resources in the Selva Lacandona rainforest, in eastern Chiapas. The harvest of timber from the tropical rainforest in this region was the dominant activity until the end of the first half of the 20<sup>th</sup> century. These exploitations concentrated almost exclusively on the extraction of valuable timber (mostly mahogany and tropical red cedar) and few other resources such as chewing-gum base but maintained the vegetation cover. At the beginning of the second half of the century, the Mexican government provided private enterprises with extensive areas and peasants with small parcels and initiated significant changes in the environment through an extensive colonization policy that brought people from many other regions of the country (de Vos, 2002). The new landholders deforested extensive

areas for agriculture (both traditional and non-traditional) and cattle ranching compromising subsequent forest regeneration (Ochoa-Gaona et al., 2007). Forest habitat alteration and fragmentation increased at faster rates in most of the region except in the Montes Azules Biosphere Reserve (INE, 2000).

In the same decades, the region underwent major cultural changes. The traditional slash-and-burn *milpa* agricultural system of the local Maya Lacandon inhabitants has also been increasingly replaced with intensive agricultural practices for monocultures and pastures (Barrera et al., 1977; Levy-Tacher et al., 2002). The indigenous Lacandon Maya traditional *milpa* farming is based on slashing and burning to provide clearings in which crops can grow (Nations and Nigh, 1980; Nigh, 2008; Nigh and Diemont, 2013). This swidden system maintains significant larger areas vegetated since it is based in polycultures including many native woody species, and requires long fallow periods during which nutrients accumulate in the vegetation and soil, weeds are controlled, and soil properties are rehabilitated (Cowgill, 1962; Reina, 1967; Douterlungne et al., 2010, 2013). Medellín and Equihua (1998) documented in areas with large forest remnants that mammalian species richness did not differ between forests and old *milpa* fields and argued that traditional Maya-Lacandon use of the land in the form of small agricultural plots embedded in a large forest matrix can increase spatial heterogeneity and promote mammal diversity.

Seed dispersal and recruitment are critical demographic processes affecting species abundance and distribution (Zang et al., 2007). Habitat fragmentation limits seed dispersal affecting species distribution, local population viability and community structure (Schupp and Fuentes, 1995; Harms et al., 2000; Howe and Miriti, 2004; Hampe et al., 2008), decreasing the functionality of habitat corridors among landscape components (Levey et al., 2005; Damschen et al., 2006). Habitat fragmentation also affects seedling recruitment and survival through its effects on patch size, extent of borders, and habitat quality (McEuen and Curran, 2004; Cordeiro et al., 2009). These effects are not homogeneous across species and alter species interactions, community composition and structure, and landscape configuration and functionality (Damschen et al., 2006; Herrera and García, 2010).

Our aim was to compare the arrival of propagules and their recruitment in tropical successional communities surrounded by habitat matrices with contrasting degrees of human disturbance. We are interested in understanding the potential ecological impact of policies directed to increase expansion of contiguous pastures and commercial agriculture in areas where more scattered traditional swidden agriculture was practiced. A comprehension of the ecological dynamics of agricultural traditional systems and their change provides critical information for the evaluation of current development practices and the design of sustainable use of resources (Nations and Nigh, 1978, 1980; Nigh, 2008; Nigh and Diemont, 2013; Levy-Tacher et al., 2012; Ortega-Álvarez et al., 2019). Specifically, we estimated seed rain and recruitment variation in communities that ranged from mature forests to agricultural fields and pastures within vegetation matrices dominated by old-growth forests or an array of human created habitats.

## Methods

### Study sites

Our study was performed in the buffer zone at the border of the Montes Azules Biosphere Reserve, Selva Lacandona, Chiapas, Mexico, centered in the Maya Lacandon homesteads of Lacanjá-Chansayab and Bonampak-Bethel (16°46'N, 91°08'W, 350-400 m elevation). Climate is warm-humid with an average annual temperature of 25-27 °C and an annual rainfall of 180-220 cm (García, 1987). Precipitation is concentrated (>80%) between summer and mid-fall (June to October). Remnants of tropical rainforest occur at basins and lower mountain rainforest on hills (Breedlove, 1981; Pennington and Sarukhán, 2005). The vegetation is characterized by a mixture of pastures, *milpa* fields (traditional land use of Maya Lacandon people with multiple crops including corn, squash, yuca and beans), early successional forests and mature forests (Quintana-Ascencio et al., 1996). We have a concurrent study of the dynamics of seed banks at the same sites (Quintana-Ascencio et al., 1996).

### Seed traps

There was a gradient of forest transformation with larger and better-preserved forest stands near the Bonampak

archaeological site and west of Lacanjá-Chansayab, and secondary forest stands, early successional forests, *milpa* fields and pastures concentrated around the Lacandon dwellings. We established 14 seed traps in each study vegetation association at these two localities: Bonampak-Bethel and Lacanjá-Chansayab (2 sites × 6 habitats × 14 traps; n = 168 total; Fig. 1). We used information from local peasants to select study sites and negotiated with them the access to the sites.

We sampled in six successional communities (also described in Carrillo Arreola, 1992 and Quintana-Ascencio et al., 1996):

1. Agriculturally improved pastures without grazing: this community is maintained by periodic fires during February and March. In 1990, it covered approximately 3% of the study region. It comprised a minor area in the study sites (~5%; area estimates based on Fig. 1).

2. *Milpa* surrounded by other *milpa* fields and early successional forests. Mixtures of corn, squash, beans and other annual and perennial crops are sown after the large woody species are cut and fire is applied in the remaining local community. Local peasants clear these forests at least every 10-20 years to reduce vegetation cover, enrich soils with ashes and reduce weed infestation.

3. Early successional forests with 5-15 years since abandonment: these are dense woody communities dominated by shrubs and fast-growing small trees characterized by associations of *Trichospermum galeottii* (Turcz.) Kosterm., *Cecropia* spp., *Ochroma pyramidale* (Cav. ex Lam.) Urb. and *Piper* spp. This habitat comprised <10% of the area in the study region.

4. Mid-successional forests: these are more complex forest stands with large individuals (>10 m height) of early or mid-successional tree species such as *Dendropanax arboreus* (L.) Decne. & Planch., *Alchornea latifolia* Sw., and *Spondias mombin* L. in the canopy (~ 10% of the area).

5. Mature forests: we chose forest stands far from human dwellings with tree strata clearly defined, diverse tree species and with average canopy >20 m height (~75% of the area).

6. *Milpa* fields within forest matrix: these communities were traditional multiple crop fields <1 ha in area within a matrix of forest that were cleared in preparation

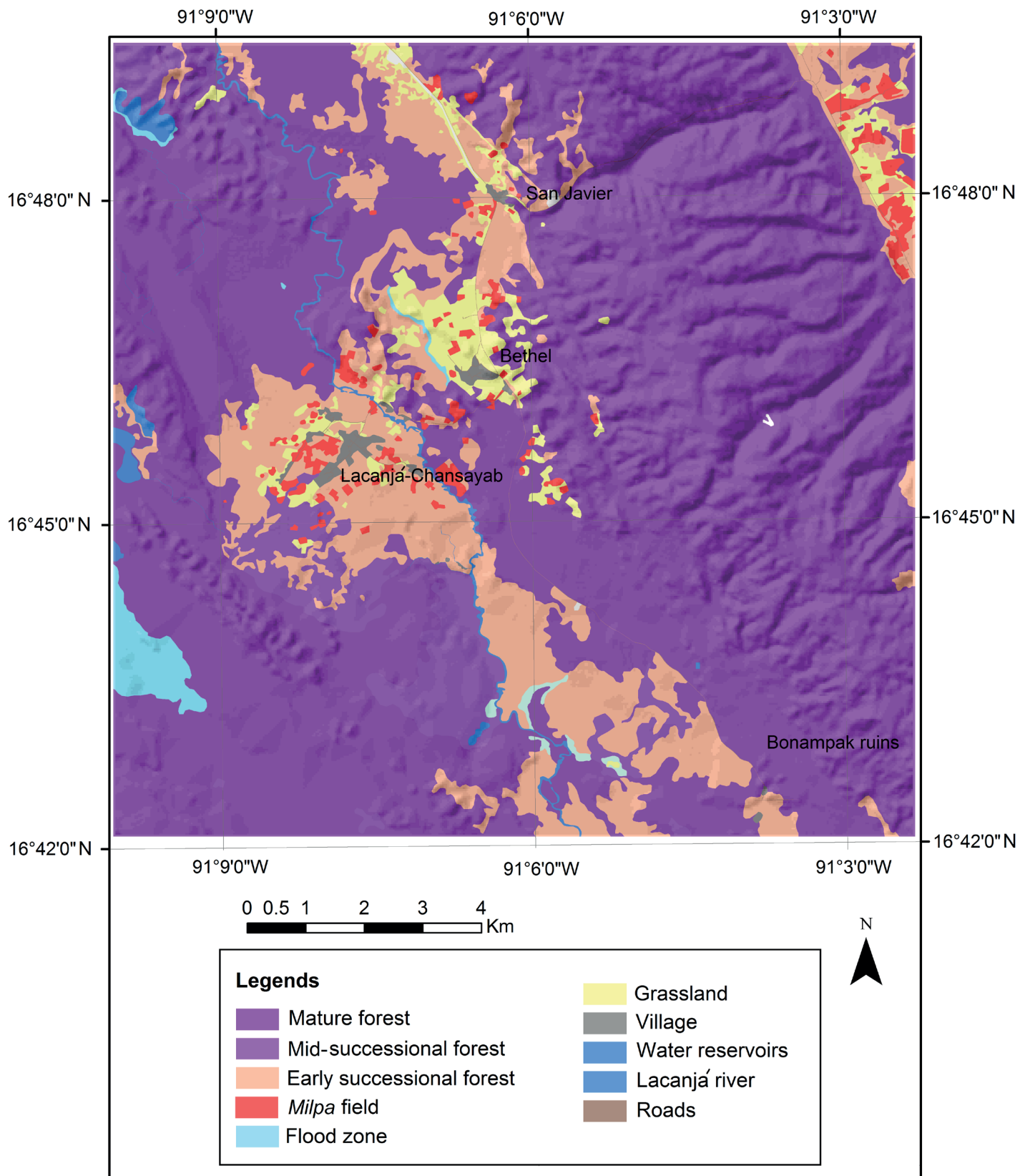


Figure 1: Map of the study sites in the Maya Lacandon homesteads of Lacanja-Chansayab and Bonampak-Bethel, Chiapas, Mexico.

for planting just before the start of our study. We set traps in *milpa* fields within the forest matrix: seven traps were randomly located along the four *milpa* sides approximately 5 m from the forest border, the other seven in the center at least >20 m from the forest border. Both types of *milpa* fields together encompassed <2% of the study area.

In July 1990, we randomly distributed 14 seed traps in each replicated successional community. In each sampling station, we deployed a funnel-shaped seed trap made of tricot (50 × 50 cm) supported by a woody frame at 50 cm height. Trap content was collected in paper bags approximately every 40–60 days in August, October and November 1990, and February, April, May and July 1991. Bags were transported within 10 days to a laboratory at El Colegio de la Frontera Sur (ECOSUR), San Cristóbal de Las Casas, Chiapas. Branches and leaves were discarded and all other material screened under a dissection microscope (Leica MZ6 stereomicroscope, Heerbrugg, Switzerland). Seeds were separated by morphospecies identified with a serial number and kept in cellophane bags for botanical determination. Damaged traps were replaced as needed. Traps in pastures, *milpa* fields and one of the early successional forests at Lacanjá-Chansayab were burned after prescribed fires performed by local farmers (<2 per site and evaluation, total 8). Samples were pooled by replicated community to estimate composite annual estimates of seed density (abundance m<sup>-2</sup>) and composition. We adjusted estimates as necessary to account for lost samples. Seed taxonomic identity was attained using a reference catalog from plants collected around the study sites and deposited at the herbarium in the Colegio de la Frontera Sur, San Cristóbal de Las Casas, Chiapas, and in the seed catalogue at the Estación Biológica Tropical “Los Tuxtlas”, Veracruz, Universidad Nacional Autónoma de México (G. Ibarra-Manríquez and S. Sinaca, pers. communication).

### New recruits' plots

In August and October 1990 we established 90 (2 sites × 3 habitats × 15 quadrats; n = 90) permanent observation plots (0.5 × 2.0 m) to monitor abundance of seedlings and juvenile plants (<0.5 m) in the three different tree and shrub dominated vegetation associations (mature forest, mid-successional forest and early successional forest) in

each location. In each replicated forest community we randomly established the 15 plots marked in the corner with wooden sticks. Plots were visited every four months for a year. Monitoring of plots at Bonampak-Bethel was two months behind those at Lacanjá-Chansayab. We identified, mapped and counted every plant <0.5 m height within the plot except prostrated plants (mostly Araceae, and other climbing herbs).

### Analysis

Seeds were divided according to their species life form (herbs, vines, lianas, shrubs and trees) and size (<2 mm, 2–6 mm and >6 mm diameter). We recognized the life form of plants <0.5 m height in the plots. We assessed the significance of differences in abundance of seed assemblages between communities, months and localities with Kruskal-Wallis tests (Potvin and Roff, 1993), and the significance of differences in abundance of plant assemblages between communities and months with Monte Carlo methods (Manly, 1991), because data did not meet the assumptions of parametric tests. For the Monte Carlo tests we randomized 1000 times among communities for each species keeping fixed their rows (species) totals per evaluation. We evaluated dissimilarity based on species presence/absence for seed and plant assemblages among communities in different study sites with Non-metric Multidimensional Scaling (NMS) with Bray-Curtis dissimilarity (Sørensen's index) and a random starting configuration. The final configuration of the ordinations was evaluated with 1000 permutations and both had a  $P < 0.001$  that similar stress values could happen by chance. Two dimensions were included in the ordination of seed assemblages after assessing the stability. Only one dimension was included for plant assemblages. We conducted analyses in R version 2.7.2 (R Core Team, 2013). We assessed differences between two areas defined by the Lacandon Maya people and successional communities pooling data within each plant association sampled.

## Results

### Seed rain

Overall and after a year of monitoring (August 1990–July 1991) we collected ~13,600 seeds of 144 species belonging to 48 botanical families. Rubiaceae, Fabaceae, Moraceae

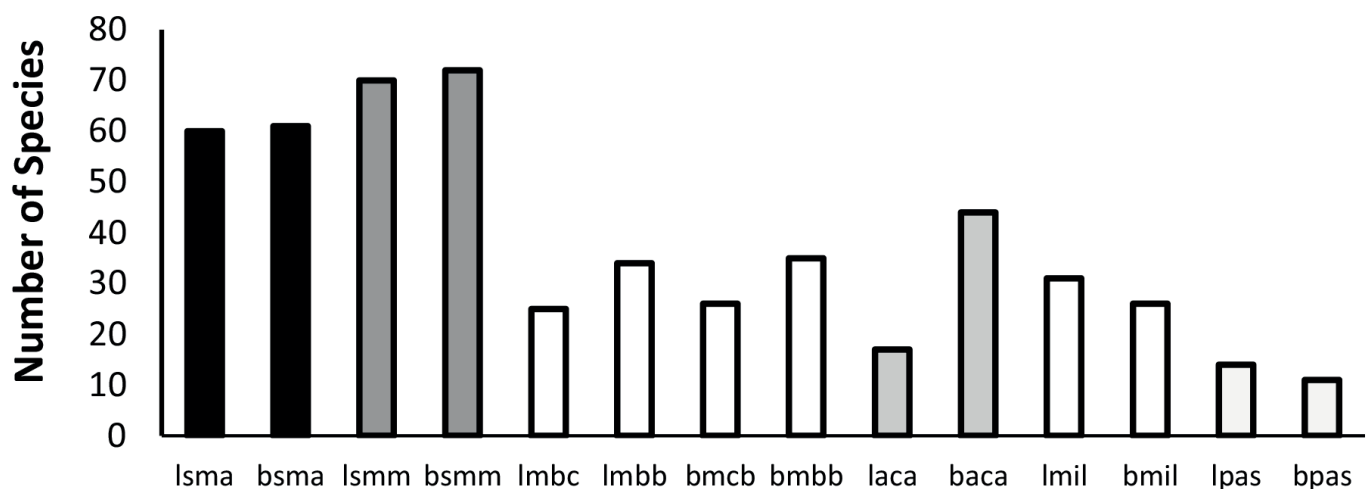
(includes *Cecropia* spp.), Araceae, Arecaceae, Piperaceae, and Poaceae comprised 32% of the species (Appendix 1). Mid-successional and mature forests had the highest species richness (60-72 species), early successional forests and *milpa* fields were intermediate (17-44) and pastures had the lowest species richness (11-14; Appendix 1; Fig. 2). Overall seed densities were highest in the center of the *milpa* fields within a forested matrix in Bethel-Bonampak (~8500 seeds m<sup>-2</sup>), in the mature forest (~7400 seeds m<sup>-2</sup>) and the early successional forest (~6200 seeds m<sup>-2</sup>) in Lacanjá-Chansayab, and lowest in the *milpa* fields of Bethel-Bonampak (~1700 seeds m<sup>-2</sup>), the center of the *milpa* within a matrix of forest in Lacanjá-Chansayab (~1000 seeds m<sup>-2</sup>), and in the pasture in Bethel-Bonampak (~100 seeds m<sup>-2</sup>; Table 1).

There was seasonal variation in the number of species and seed density (Kruskall-Wallis  $H > 19$ ,  $P < 0.004$ , for both contrasts), but there were no clear differences among localities ( $H = 0.49$ ,  $P = 0.48$ ). Number of species was lowest during the rainy season (August-October) and highest at the end of the dry season (April-May; Fig. 3). There was a larger change among seasons in number of species captured in the forests than in early successional forests and

*milpa* fields. Pastures had the lowest seasonal contrast in the number of species (Fig. 3). Number of seeds of tree species was highest in July, coinciding with the start of the rainy season, while seeds of herbaceous species peaked in April at the end of the dry season. Seeds of shrubs did not show a marked variation across the year (Fig. 4).

Seeds of different life forms varied across successional communities. Of the 144 species recorded in our seed collection 42 were trees, 25 herbs, 21 shrubs, 19 vines, and 40 could not be determined. Seeds of trees and vines were frequent in forest communities and *milpa* fields surrounded by forests, and scarce or absent in open communities in disturbed areas. Seeds of shrubs were more abundant in early successional forests and *milpa* fields in disturbed areas. Seeds of herbaceous species were most abundant in the *milpa* fields and in early successional forests but were frequent in all communities.

The seed rain was dominated by few species (Table 1). Tree species in the genera *Brosimum* Sw., *Cecropia* Loefl. and *Ficus* L. (included here all three within the Moraceae) contributed with 22-76% of the seeds in the forests, 13-81% in disturbed habitats surrounded by forests, 11-33% in the



**Figure 2:** Total number of species per successional condition at the Selva Lacandona, Chiapas, Mexico (August 1990-July 1991). Lacanjá-Chansayab = l; Bonampak-Bethel = b; Vegetation associations: Mature forests = sma; Mid-successional forests = smm; Center of *milpa* field within forests = mcb; Border of *milpa* fields within forests = mbb; Early-successional forests = aca; *Milpas* within disturbed areas = mil; pastures = pas. Habitat perturbation increased in habitats represented by columns with lighter shades.

**Table 1:** Percent contribution of the most common species to the total number of seeds collected in six successional communities in the Selva Lacandona, Chiapas, Mexico (August 1990-July 1991). Lacanjá-Chansayab = l; Bonampak-Bethel = b; Successional communities: Mature forests = sma; Mid-successional forests = smm; Center of *milpa* field within forests = mcb; Border of *milpa* fields within forests = mbb; Early-successional forests (fallows) = aca; *Milpas* within disturbed areas = mil; grasslands = pas. \*exotic.

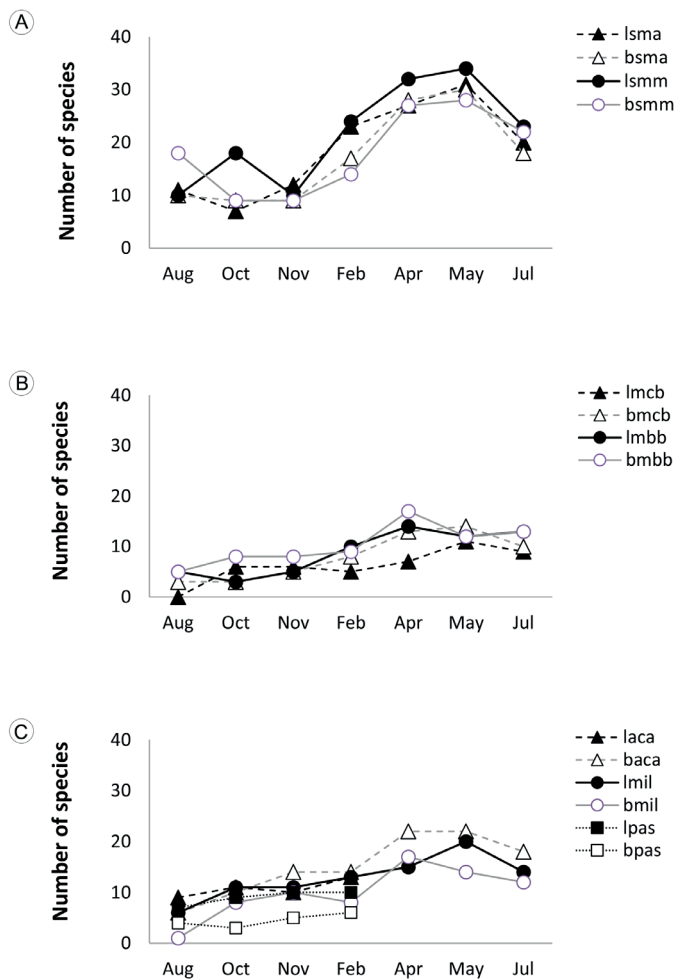
Species	lsma	bsma	lsmm	bsmm	lmcb	lmdb	bmcb	bmbb	laca	baaa	lmil	bmil	lpas	bpas
<i>Brosimum</i> sp.								7.1						
<i>Cecropia</i> spp.	49.4		39.1	9.9		1.6			32.6	7.0				
<i>Ficus aurea</i> Nutt.	14.9	11.6	1.9		12.9	38.0	51.0	23.4			2.4	2.4		
<i>Ficus insipida</i> Willd.	6.8	16.1	2.6	1.2						4.5				
<i>Ficus jimenezii</i> Standl.	4.6	3.2	9.2	10.6			29.7							
<i>Heliocarpus</i> spp.		23.3	5.0		8.4									
<i>Andropogon bicornis</i> L.													8.2	
<i>Hyparrhenia rufa</i> *(Nees) Stapf													19.2	
<i>Paspalum paniculatum</i> L.													59.4	
<i>Paspalum virgatum</i> L.														49.2
<i>Bidens</i> spp.											10.9			
Undetermined spp.	12.6	31.2	32.4	56.6	64.0	47.9	15.3	32.4	11.5	16.6	28.6	59.3	8.2	
<i>Euphorbia heterophylla</i> L.												15.5		7.6
<i>Iresine</i> spp.						2.2		24.0			9.0			5.5
<i>Piper</i> sp. 1									25.1	24.1	10.9	2.1		11.2
<i>Piper</i> sp. 2									22.7	25.7	29.0	2.9		16.6
Accumulated %	88	85	90	78	85	90	96	87	92	78	91	82	95	90
Total seeds m <sup>-2</sup>	7453	1757	5843	1448	1013	2562	8528	2338	6225	5302	7344	1669	2800	132

early successional forests, less than 3% in the *milpas* within disturbed matrix, and were absent in the pastures. Seeds of *Piper* spp. were only found in early successional forests and in *milpa* fields, where they contributed with 2-25%. Seeds of Asteraceae were relatively abundant in all communities (8.2-57%). Exotic invasive grasses were exclusive of pastures, where they contributed with (49-87%).

Distribution of seeds in the three size groups varied among successional communities and seasons (Kruskall-Wallis  $H > 55$ ,  $P < 0.001$ , for both contrasts), but there was no clear evidence of heterogeneity among localities ( $H = 0.08$ ,  $P = 0.77$ ). In our sample, 38 species had seeds  $< 2$  mm, 76 were 2-6 mm, and 28 were  $> 6$  mm in diameter. The smallest seeds were relatively homogeneously distributed across communities. Seeds of intermediate size were more abundant in early successional forests than in forests and almost

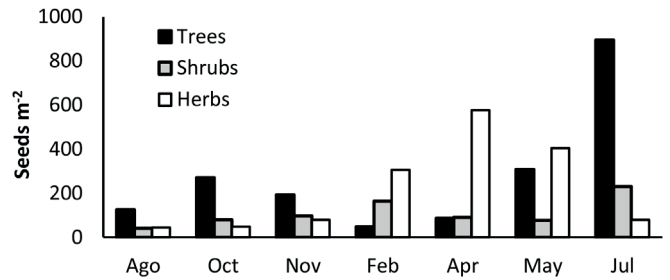
absent in open communities. The largest seeds were most abundant in the border of the forest with the *milpa* fields in the forest matrix, followed by forests, early successional forests, and were scarce in disturbed and open habitats. The peak of dispersal of small and large-sized seeds happened during the end of the dry season. Mid-sized seeds did not show a clear seasonality of dispersal.

NMS ordination indicated the dissimilarity among assemblages (axis 1 eigenvalue = 0.99,  $P = 0.02$ , axis 2 eigenvalue = 0.03,  $P = 0.04$ ; Fig. 5). This ordination explained 0.896 of the variance. Axis one summarized most of the dissimilarity variation among successional communities studied. The dissimilarity pattern was consistent between Lacanjá-Chansayab and Bonampak-Bethel. Mature and mid-successional forest communities were highly similar from each other and formed a cluster. *Milpa* fields within

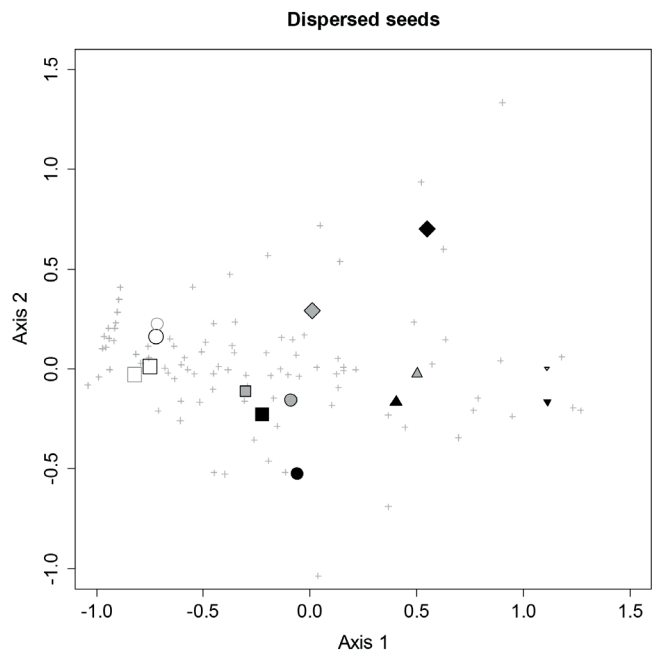


**Figure 3:** Number of species per month and successional condition in the Selva Lacandona, Chiapas, Mexico (August 1990-July 1991). A. mature (ma) and mid-successional (mm) forest; B. center (cb) and border (bb) of the milpa surrounded by forest; C. early successional forest (aca), milpa (mil) and pastures (pas). Lacanjá-Chansayab = l; Bonampak-Bethel = b; Vegetation associations: Mature forests = sma; Mid-successional forests = smm; Center of milpa field within forests = mcb; Border of milpa fields within forests = mbb; Early-successional forests = aca; Milpas within disturbed areas = mil; pastures = pas.

a matrix of forest were closest to the forest communities and in a central position among forests, early successional forests, and milpa fields in the disturbed habitat matrix. In the ordination space, associations in the borders of the milpa surrounded by forest were closest to the forests. Associations in the milpa fields within the matrix of disturbed habitats were equally distant from the early successional



**Figure 4:** Seed density per month by life-form in the Selva Lacandona, Chiapas, Mexico (August 1990-July 1991; vines and unknown species had small contributions and were not plotted).



**Figure 5:** Non-metric multidimensional scaling with Bray-Curtis dissimilarity (Sørensen's index) for associations of seeds of species in successional communities in Lacanjá-Chansayab, Chiapas, Mexico. Black symbols: Bonampak-Bethel; Gray symbols: Lacanjá-Chansayab; Vegetation associations, open circles: Mature forests; open squares: Mid-successional forests; filled squares: Border of milpa fields within forests; filled circles: Center of milpa field within forests; diamonds: Early-successional forests; up-pointed triangles: Milpas within disturbed areas; down-pointed triangles: pastures; Size of the site symbols was adjusted by the proportion of tree species in the sample; crosses: species.

forests and milpa in the forests. Pastures were the most distant from all other communities. Axis two mostly summarized differences among early successional forests and the rest of the communities.



## Establishment of new recruits

Overall, we recorded ~3416 new recruits with a height <0.5 m belonging to 238 morphospecies in 48 botanical families, 98 were identified to genus and 76 to species (Appendix 2). Among these plants, the largest number of species occurred in mature and mid-successional forests compared to early successional forests in both locations (Table 2). The number of species was higher in the mid-successional and mature forests of Bonampak-Bethel compared to Lacanjá-Chansayab. The number of plants <0.5 m in height was highest in the forests and lowest in the early successional forests (Table 2). Plant density was in general higher in the mid-successional and mature forests of Bonampak-Bethel compared to Lacanjá-Chansayab. Survival of plants <0.5 m was higher in mid- and late successional forests than in early successional ones (Table 2).

Most small plants belonged to a few species. Seedlings of *Chamaedorea* spp. were abundant in the mid-successional and mature forest communities (7-11% of the total number of seedlings in a given community), and rare in early successional forests. Seedlings of *Pseuderanthemum*

*verapazense* Donn. Sm., an unidentified taxon of Sapindaceae, and an unidentified species were common in the forests of Lacanjá-Chansayab (26-38%), while seedlings of *Ampe-locera hottlei* (Standl.) Standl., *Rinorea guatemalensis* (S. Watson) Bartlett, *Brosimum alicastrum* Sw., *Paullinia costata* Schlttdl. & Cham., and an unidentified species of Sapindaceae were common in the forests of Bonampak-Bethel (25-41%). Plants of *Iresine* spp. were abundant in early successional forests in both locations (17-32%). Seedlings of *Dendropanax arboreus*, *Piper glabrescens* (Miq.) C. DC., and a *Heliconia* species were abundant in the fallow fields at Lacanjá-Chansayab (22%), while seedlings of *Acalypha diversifolia* Jacq., *Psychotria pubescens* Sw. and a grass were common in the fallow fields at Bonampak-Bethel (28%). We recognized the life form of the small plants for 143 species: three were annual herbs, 30 perennial herbs, 15 vines, nine ferns, 44 shrubs, 8 palms, and 32 trees. Seedlings of trees, palms and vines were more abundant in mid- and late successional forests. Small individuals of shrubs were common in all forest stands. Herbs were more abundant in early successional forests.

**Table 2:** Density of plants < 0.50 cm tall ( $m^{-2} \pm$  standard error), number of species per evaluation and total (in three evaluations) and plant survival of plants in control plots at three replicated forested successional communities in the Selva Lacandona, Chiapas, Mexico (August 1990-June 1991). Lacanjá-Chansayab = l; Bonampak-Bethel = b; Successional communities: Mature forests = sma; Mid-successional forests = smm; Early-successional forest (fallow) = aca. Monitoring of plots at Bonampak-Bethel was two months behind those at Lacanjá-Chansayab. We do not have evidence of significant differences between communities with the same letter in the same column after Monte Carlo tests with 1000 simulations.

Site	Variable	Sampling months			Plant survival ( $\pm$ standard error)			Total of species
		August/October 1990	December/February	April/June 1991	Aug/Oct-Dec/Feb	Dec/Feb-Apr/Jun	Aug/Oct-Apr/Jun	
Isma	plants $m^{-2}$	14.5 (1.03) b	16.0 (1.22) b	15.9 (1.56) b	0.43 (0.07) c	0.46 (0.07) c	0.30 (0.06) b	
bsma	plants $m^{-2}$	18.5 (0.85) a	23.4 (0.95) a	36.1 (3.62) a	0.63 (0.05) a	0.32 (0.05) e	0.33 (0.05) b	
lsmm	plants $m^{-2}$	18.1 (1.33) a	16.7 (1.12) b	18.3 (1.45) b	0.54 (0.06) b	0.50 (0.07) b	0.43 (0.06) a	
bsmm	plants $m^{-2}$	20.6 (1.07) a	25.9 (1.07) a	33.6 (2.12) a	0.53 (0.06) bc	0.61 (0.06) a	0.36 (0.05) b	
laca	plants $m^{-2}$	7.67 (1.09) c	10.9 (1.01) c	17.6 (1.68) b	0.47 (0.07) c	0.40 (0.08) d	0.26 (0.07) c	
baaca	plants $m^{-2}$	9.07 (1.03) c	10.5 (1.19) c	15.5 (1.56) b	0.37 (0.08) d	0.38 (0.07) d	0.23 (0.06)c	
Isma	species	43bc	45 b	40 b				69 b
bsma	species	66 a	68 a	61 a				96 a
lsmm	species	53 ab	58 ab	53 ab				74 b
bsmm	species	55 ab	68 a	64 a				96 a
laca	species	34 c	42 b	45 b				67 b
baaca	species	28 c	31b	47 b				59 b

Dissimilarity in floristic composition among locations and vegetation associations was highest between mid-successional and mature forests and early successional forests (>0.91 for all comparisons), and lowest between mid- and late successional forests within locations (0.43 and 0.47 for Bonampak and Lacanjá-Chansayab, respectively). Distance between locations was 0.67 for early successional forests, 0.60 for mid-successional and 0.68 for mature ones. Distances between mid-successional and mature forests across localities were 0.54 and 0.66.

## Discussion

We document pervasive effects of the increasing predominance of humanized landscapes in the buffer zone of the Montes Azules Biosphere Reserve, Selva Lacandona, Chiapas, Mexico. We observed a significant decline in species richness and a change in dominance of life forms in the seed rain assemblage along the floristic successional gradient. At the extremes, mature forest included seeds of diverse tree species while the assemblage in pastures was dominated by seeds of a few grasses, mostly introduced exotic species. Areas characterized by intensive agriculture and pastures nearby human dwellings were associated with the most simplified and homogeneous floristic composition of seed assemblages. Seeds of tree species were present in *milpa* fields surrounded by forest but were absent in *milpa* in humanized environments where there was a dominance of seeds of generalist and widespread herbaceous species, many of them exotic species. The arrival of tree seeds into *milpa* fields surrounded by forests promotes faster recovery of the forest (Gómez-Pompa and Vázquez-Yanes, 1981).

Increasing dominance of open and disturbed habitats facilitates dispersal and colonization by invasive and weedy species (Uhl et al., 1981; Uhl and Clark, 1983; Saulei and Swaine, 1988; Drake, 1998). Because most of these herbaceous species have long distance dispersal and long-lived seed banks, as their seeds accumulate in the soil of mature remnant forest stands within the humanized mosaic where they are readily available to establish after disturbances (Guevara and Gómez-Pompa, 1972; Demel and Granström, 1995; Quintana-Ascencio et al., 1996; López-Toledo and Martínez-Ramos, 2011). This compositional change in the seed bank can increase the interference of these species

with crops in recently prepared *milpa* fields and may alter successional sequences (del Castillo and Pérez-Ríos, 2008). Notwithstanding the observed influence of the humanized landscapes on the recovery of the original associations of the tropical rainforest, it should be noted that we do not expect to have a complete representation of the tree species composition in the forest based on seeds arriving to our traps within a year. Whether the temporal and methodological limitations of our study are sufficient to make our point regarding the pernicious effects of extensive humanized habitats, will depend on future long-term studies in the same region aimed to assess a possible extinction debt in the coming decades (Wearn et al., 2012) and the recovery potential contained in widespread secondary growth vegetation (Gómez-Pompa et al., 1972; Chazdon, 2014).

Site successional condition and landscape configuration affected community composition. Species composition of seed dispersal assemblages in the Lacandon rainforest was more similar to species composition of local vegetation than previously reported similarities between soil seed banks and vegetation from a concurrent study (Quintana-Ascencio et al., 1996). As it has been documented in other studies in tropical forests (Franklin and Rey, 2007; Gomes-Freitas et al., 2013; Weerasinghe et al., 2019), small and wind dispersed seeds of generalist herb species dominated seed assemblages in human-controlled environments while large fleshy seeds or fruits of woody species were more common in continuous forest stands or in their border with *milpas*. Fast decaying seed dispersal kernels of many woody species can help to explain the similarity between seed rain and vegetation (Álvarez-Buylla and Martínez-Ramos, 1990; Drake, 1992; Burrows, 1994). Human impacts on species interactions can alter and reduce dispersal kernels. Seed removal, seed dispersal distances and seed predation processes shape seed dispersal kernels and influence the location and density of seeds deposited (Dirzo et al., 2007). Growing anthropogenic impact including hunting, habitat alteration and fragmentation changes abundance of vertebrates and affects their behavior (Babweteera and Brown, 2010; Bagchi et al., 2011; Bravo, 2012; Brodie and Aslan, 2012; Carrara et al., 2015).

Forest loss and habitat configuration have direct effects on plant recruitment, survivorship and fecundity of many species and indirect long-term negative effects on

their population viability through decreasing growth rates and loss of genetic variation (Heywood and Iriondo, 2003; Gagnon et al., 2011). Changes in mortality, growth and recruitment and in forest stand structure with succession in a neighboring region in the Selva Lacandona were rapid during the first five years of succession, decreasing rapidly afterwards and negatively related with initial stand basal area, but relatively independent of initial tree density (Van Breugel et al., 2006). Reduced diversity and differences in species composition have been documented between large forest fragments and smaller fragments within humanized habitat mosaics (Arroyo-Rodríguez and Mandujano, 2006). In these impoverished landscapes pioneer, weedy and alien species increase in abundance in the remnant smaller fragments and along forest edges (Tabarelli et al., 2010; Lôbo et al., 2011). Larger borders with agricultural fields and pastures increase risks of seed predation by scatter-hoarding rodents in disturbed forests (Gutiérrez-Granados, 2011). The extent of forest fragments in the Brazilian Amazon influenced seed abundance and composition of soil seed banks and clearly influenced the potential resilience and regeneration of these sites in the event of natural or anthropic disturbances (Sousa et al., 2017).

We found consistent seed rain assemblages among the two studied localities and seasonal variation in the identity, number of species and seed density captured. Patterns of variation in seed number and abundance among successional communities were commensurate between the relatively independent landscapes of Bonampak-Bethel and Lacanjá-Chansayab, strengthening the generality of our findings. We also observed that species richness was significantly higher during the dry season (April-May) and lowest during the rainy season (August-October). Similar seasonal variation in seeds captured has been documented in other tropical rainforests (Sheldon and Nadkarni, 2013). Habitat and life form affected the seasonal abundance and richness of seeds caught. The change in number of species captured was higher in the forests than in early successional forests and *milpa* fields, while pastures had almost no variation. Peak abundance of seeds of tree species coincides with the start of the rainy season, while seeds of herbaceous species peak during the dry season. Variation in abundance of seeds of shrubs was lower across seasons.

Cumulative replacement of tropical forest and scattered *milpa* fields by pastures and extensive commercial agriculture that use exotic agrochemicals and intensive soil management will increasingly compromise forest regeneration and conservation of biodiversity. Until recently, forest regeneration neighboring a traditional agricultural landscape has been dependent on the configuration of a highly diverse vegetation matrix. Our results add to prior evidence indicating that progressively smaller forest fragments surrounded by more homogeneous matrices of increasingly simplified habitats will reduce seed exchange of mid- and late successional species among remnant stands and alter environmental conditions necessary for their establishment. Simultaneously, growing abundance of widespread weedy generalist herbaceous species will modify species interactions in recently disturbed and regeneration habitats which will negatively affect recruitment and establishment of late successional species. The traditional Mayan *milpa* system relies on successional processes restocking soil nutrients and reducing nuisance plants (Collier, 1975; Hernández-Xolocotzi, 1993; Douterlungne et al., 2010; Nigh, 2008; Nigh and Diemont, 2013). Shorter return times associated with intensive agriculture will decrease crop harvesting rates because of changes in vegetation composition and reduction in the accumulation of plant biomass and nutrients. Growing dominance of intensive productive systems hinders the regeneration potential of secondary habitats linked to tropical rainforest and undermines the sustainability of traditional practices and the economic balance of native people in tropical regions.

## Author contributions

MGE, NRM and PFQA designed the study. All the authors participated with field work. FCA built the seed traps and separated the seed samples in the lab. NRM and FCA identified the species. PFQA performed the analyses. All the authors contributed with the writing and edition of the document.

## Funding

This study was financed by Secretaría de Educación Pública and Consejo Nacional de Ciencia y Tecnología (grant ref. no. P220CCOR892485 to MGE).

## Acknowledgements

We thank the Lacandon Maya communities of Lacanjá-Chansayab and Bethel for their hospitality and collaboration. C. Silva Rhoads (INAH-Chiapas) and local workers allowed the use of facilities under their responsibility at Bonampak. The support provided by Miguel Martínez-Icó and J. M. Mauricio Leguizamó was vital. G. Ibarra Manríquez and S. Sinaca (EBLT-UNAM), S. Ochoa Gaona (ECOSUR) and J. D. García Pérez (CHAPA) assisted with botanical determinations. P. E. Mendoza Hernández and G. Domínguez-Vázquez participated during field work and E. Valencia Barrera elaborated the map. The comments of four anonymous reviewers improved this manuscript.

## Literature cited

- Álvarez-Buylla, E. R. and M. Martínez-Ramos. 1990. Seed bank versus seed rain in the regeneration of a tropical pioneer tree. *Oecologia* 84: 314-325. DOI: <https://doi.org/10.1007/BF00329755>
- Arroyo-Rodríguez, V. and S. Mandujano. 2006. The importance of tropical rain forest fragments to the conservation of plant species diversity in Los Tuxtlas, Mexico. *Biodiversity and Conservation* 15: 4159-4179. DOI: <https://doi.org/10.1007/s10531-005-3374-8>
- Barrera, A., A. Gómez-Pompa and C. Vázquez-Yanes. 1977. El manejo de las selvas Mayas: sus implicaciones silvícolas y agrícolas. *Biotica* 2: 47-61.
- Babweteera, F. and N. Brown. 2010. Spatial patterns of tree recruitment in East African tropical forests that have lost their vertebrate seed dispersers. *Journal of Tropical Ecology* 26(2): 193-203. DOI: <https://doi.org/10.1017/S026646740999054X>
- Bagchi, R., C. D. Philipson, E. M. Slade, A. Hector, S. Phillips, J. F. Villanueva, O. T. Lewis, C. H. C. Lyal, R. Nilus, A. Madran, J. D. Scholes and M. C. Press. 2011. Impacts of logging on density-dependent predation of dipterocarp seeds in a South East Asian rainforest. *Philosophical Transactions of the Royal Society B* 366: 3246-3255. DOI: <https://doi.org/10.5167/uzh-52548>
- Bravo, S. P. 2012. The impact of seed dispersal by black and gold howler monkeys on forest regeneration. *Ecological Research* 27(2): 311-321. DOI: <https://doi.org/10.1007/s11284-011-0904-6>
- Bradshaw, C. J. A., N. S. Sodhi and B. W. Brook. 2009. Tropical turmoil: A biodiversity tragedy in progress. *Frontiers in Ecology and the Environment* 7(2): 79-87. DOI: <https://doi.org/10.1890/070193>
- Breedlove, D. E. 1981. Flora of Chiapas. Part I: Introduction to the Flora of Chiapas. California Academy of Sciences. San Francisco, USA. 35 pp.
- Brook, B. W., N. S. Sodhi and C. J. A. Bradshaw. 2008. Synergies among extinction drivers under global change. *Trends in Ecology and Evolution* 23(8): 453-460. DOI: <https://doi.org/10.1016/j.tree.2008.03.011>
- Brodie, J. F. and C. E. Aslan. 2012. Halting regime shifts in floristically intact tropical forest deprived of their frugivores. *Restoration Ecology* 20(2): 153-157. DOI: <https://doi.org/10.1111/j.1526-100X.2011.00833.x>
- Burrows, C. J. 1994. Seed trapping in Ahuriri Summit Bush Scenic Reserve, Port Hills, western Banks Peninsula, 1985-86. *New Zealand Journal of Botany* 32(2): 183-215. DOI: <https://doi.org/10.1080/0028825X.1994.10410367>
- Carrara, E., V. Arroyo-Rodríguez, J. H. Vega-Rivera, J. E. Schondube, S. M. de Freitas and L. Fahrig. 2015. Impact of landscape composition and configuration on forest specialist and generalist bird species in the fragmented Lacandona rainforest, Mexico. *Biological Conservation* 184: 117-126. DOI: <https://dx.doi.org/10.1016/j.biocon.2015.01.014>
- Carrillo Arreola, F. 1992. Lluvia de semillas y establecimiento de plántulas en comunidades secundarias de la selva Lacandona, Chiapas, México. Tesis de licenciatura, Facultad de Ciencias. Universidad Nacional Autónoma de México. México, D.F., México. 53 pp.
- Chapman, C. A., L. J. Chapman, K. Vulinec, A. Zanne and M. J. Lawes. 2003. Fragmentation and alteration of seed dispersal processes: An initial evaluation of dung beetles, seed fate, and seedling diversity. *Biotropica* 35(3): 382-393. DOI: <https://doi.org/10.1646/02149>
- Chazdon, R. L. 2014. Second growth: The promise of tropical forest regeneration in an age of deforestation. The University of Chicago Press. Chicago, Illinois, USA.
- Collier, G. A. 1975. Fields of the Tzotzil: the ecological bases of tradition in highland Chiapas. University of Texas Press. Austin, USA. 255 pp.
- Cordeiro, N. J., H. J. Ndangalasi, J. P. McEntee and H. F. Howe. 2009. Disperser limitation and recruitment of an endemic

- African tree in a fragmented landscape. *Ecology* 90(4): 1030-1041. DOI: <https://doi.org/10.1890/07-1208.1>
- Cowgill, U. M. 1962. An agricultural study of the southern Maya lowlands. *American Anthropologist* 64(2): 273-286.
- Damschen, E. I., N. M. Haddad, J. L. Orrock, J. J. Tewksbury and D. J. Levey. 2006. Corridors increase plant species richness at large scales. *Science* 313(5791): 1284-1286. DOI: <https://doi.org/10.1126/science.1130098>
- de Vos, J. 2002. Una tierra para sembrar sueños. Historia reciente de la Selva Lacandona, 1950-2000. Fondo de Cultura Económica. México, D.F., México. 505 pp.
- del Castillo, R. F. and M. A. Pérez-Ríos. 2008. Changes in seed rain during secondary succession in a tropical montane cloud forest region in Oaxaca, Mexico. *Journal of Tropical Ecology* 24(4): 433-444. DOI: <https://doi.org/10.1017/S0266467408005142>
- Demel, T. and A. Granström. 1995. Soil seed banks in dry Afro-montane forests of Ethiopia. *Journal of Vegetation Science* 6(6): 777-786. DOI: <https://doi.org/10.2307/3236391>
- Didham, R., J. Tykianakis, N. Gemmell, T. Rand and R. Ewers. 2007. Interactive effects of habitat modification and species invasion on native species decline. *Trends in Ecology and Evolution* 22(9): 489-496. DOI: <https://doi.org/10.1016/j.tree.2007.07.001>
- Dirzo, R. and P. H. Raven. 2003. Global state of biodiversity and loss. *Annual Review of Environmental Resources* 28: 137-167. DOI: <https://doi.org/10.1146/annurev.energy.28.050302.105532>
- Dirzo, R., E. Mendoza and P. Ortiz. 2007. Size-related differential seed predation in a heavily defaunated Neotropical rain forest. *Biotropica* 39(3): 355-362. DOI: <https://doi.org/10.1111/j.1744-7429.2007.00274.x>
- Douterlungne, D., E. Thomas and S. I. Levy-Tacher. 2013. Fast-growing pioneer tree stands as a rapid and effective strategy for bracken elimination in the Neotropics. *Journal of Applied Ecology* 50(5):1257-1265. DOI: <https://doi.org/10.1111/1365-2664.12077>
- Douterlungne, D., S. I. Levy-Tacher, D. J. Golicher and F. Román-Dañobeytia. 2010. Applying indigenous knowledge to the restoration of degraded tropical rain forest clearings dominated by Bracken fern. *Restoration Ecology* 18(3): 322-329. DOI: <https://doi.org/10.1111/j.1526-100X.2008.00459.x>
- Drake, D. R. 1992. Seed dispersal of *Metrosideros polymorpha* (Myrtaceae): A pioneer tree of Hawaiian lava flows. *American Journal of Botany* 79(11): 1224-1228. DOI: <https://doi.org/10.1002/j.1537-2197.1992.tb13724.x>
- Drake, D. R. 1998. Relationship among the seed rain, seed bank and vegetation of a Hawaiian forest. *Journal of Vegetation Science* 9(1): 103-112. DOI: <https://doi.org/10.2307/3237228>
- Franklin, J. and S. J. Rey. 2007. Spatial patterns of tropical forest trees in Western Polynesia suggest recruitment limitations during secondary succession. *Journal of Tropical Ecology* 23(1): 1-12. DOI: <https://doi.org/10.1017/S0266467406003774>
- García, E. 1987. Modificaciones al Sistema de clasificación de Köppen. Instituto de Geografía. Universidad Nacional Autónoma de México. México, D.F., México. 246 pp.
- Gagnon, P. R., E. M. Bruna, P. Rubim, M. R. Darrigo, R. C. Littell, M. Uriarte and W. J. Kress. 2011. Growth of an understory herb is chronically reduced in Amazonian forest fragments. *Biological Conservation* 144(2): 830-835. DOI: <https://doi.org/10.1016/j.biocon.2010.11.015>
- Gomes Freitas, C., C. Dambros and J. L. Campana-Camargo. 2013. Changes in seed rain across Atlantic Forest fragments in northeast Brazil. *Acta Oecologica* 53: 49-55. DOI: <https://doi.org/10.1016/j.actao.2013.08.005>
- Gómez-Pompa, A. and C. Vázquez-Yanes. 1981. Successional studies in the rainforest in Mexico. In: West, D. C., H. H. Shugart and D. B. Botkin (eds.). *Forest Succession. Concepts and applications*. Springer. New York, USA. Pp. 246-266. DOI: [https://doi.org/10.1007/978-1-4612-5950-3\\_16](https://doi.org/10.1007/978-1-4612-5950-3_16)
- Gómez-Pompa, A., C. Vázquez-Yanes and S. Guevara. 1972. The tropical rain forest: A nonrenewable resource. *Science* 177(4051): 762-765. DOI: <https://doi.org/10.1126/science.177.4051.762>
- Gómez-Pompa, A., A. L. Anaya, F. Golley, G. Hartshorn, D. Janzen, M. Kellman, L. Nevling, J. Peñalosa, P. Richards, C. Vázquez and P. Zinke. 1974. Recovery of tropical ecosystems. In: Farnworth, E. G. and F. B. Golley (eds.). *Fragile ecosystems*. Springer. Oxford, UK. Pp. 113-138. DOI: [https://doi.org/10.1007/978-3-642-86763-7\\_4](https://doi.org/10.1007/978-3-642-86763-7_4)
- Grubb, P. J. 1996. Rainforest dynamics: The need for new paradigm. In: Edwards, D. S. W. E. Booth and S. C. Choy (eds.). *Tropical Rainforest Research-Current Issues*. Kluwer. Boston, USA. Pp. 215-234. DOI: [https://doi.org/10.1007/978-94-009-1685-2\\_21](https://doi.org/10.1007/978-94-009-1685-2_21)
- Guevara, S. and A. Gómez-Pompa. 1972. Seeds from surface soils in a tropical region of Veracruz, Mexico. *Journal of the Arnold Arboretum* 53: 312-335.

- Gutiérrez-Granados, G. 2011. Effect of logging on rodent scatter-hoarding dynamics in tropical forests: Implications for plant recruitment. *Integrative Zoology* 6(2): 74-80. DOI: <https://doi.org/10.1111/j.1749-4877.2011.00234.x>
- Hampe, A., J. L. García-Castaño, E. H. Shupp and P. Jordano. 2008. Spatiotemporal dynamics and local hotspots of initial recruitment in vertebrate-dispersed trees. *Journal of Ecology* 96(4): 668-678. DOI: <https://doi.org/10.1111/j.1365-2745.2008.01364.x>
- Harms, K. E., S. J. Wright, O. Calderón, O. A. Hernández and E. A. Herre. 2000. Pervasive density dependent recruitment enhances seedling diversity in a tropical forest. *Nature* 404: 493-495. DOI: <https://doi.org/10.1038/35006630>
- Harrison, S. and E. Bruna. 1998. Habitat fragmentation and large-scale conservation: What do we know for sure? *Ecography* 22(3): 225-272. DOI: <https://doi.org/10.1111/j.1600-0587.1999.tb00496.x>
- Hernández-Xolocotzi, E. 1993. Utilización de los recursos vegetales de México. In: Moreno-Casasola, P. and Rzedowski, J. (eds.). Logros y perspectivas del conocimiento de los recursos vegetales de México en vísperas del siglo XXI. Instituto de Ecología, A.C. Xalapa, México. Pp. 57-62.
- Herrera, J. M. and D. García. 2010. Effects of forest fragmentation on seed dispersal and seedling establishment in ornithochorous trees. *Conservation Biology* 24(4): 1089-1098. DOI: <https://doi.org/10.1111/j.1523-1739.2010.01459.x>
- Heywood, V. H. and J. M. Iriondo. 2003. Plant conservation: Old problems, new perspectives. *Biological Conservation* 113(3): 321-335. DOI: [https://doi.org/10.1016/s0006-3207\(03\)00121-6](https://doi.org/10.1016/s0006-3207(03)00121-6)
- Howe, H. F. and M. N. Miriti. 2004. When seed dispersal matters. *BioScience* 54(7): 651-660. DOI: [https://doi.org/10.1641/0006-3568\(2004\)054\[0651:WSDM\]2.0.CO;2](https://doi.org/10.1641/0006-3568(2004)054[0651:WSDM]2.0.CO;2)
- Huston, M. A. 1994. *Biological Diversity: The coexistence of species on changing landscapes*. Cambridge University Press. New York, USA. 681 pp.
- INE. 2000. Programa de manejo de la Reserva de la Biosfera Montes Azules. Instituto Nacional de Ecología. Secretaría de Medio Ambiente y Recursos Naturales. Cd. Mx., México.
- Janzen, D. H. 1973. Tropical agroecosystems. *Science* 182(4118): 1212-1219. DOI: [https://doi.org/10.1016/0304-3746\(78\)90023-9](https://doi.org/10.1016/0304-3746(78)90023-9)
- Janzen, D. H. 1983. No park is an island: increasing interference from outside as park size decreases. *Oikos* 41: 402-410. DOI: <https://doi.org/10.2307/3544100>
- Janzen, D. H. 1986. The future of tropical ecology. *Annual Review Ecology Systematics* 17: 305-324. DOI: <https://doi.org/10.1146/annurev.es.17.110186.001513>
- Kellman, M., R. Tackaberry and L. Rigg. 1998. Structure and function in two tropical gallery forest communities: implications for forest conservation in fragmented systems. *Journal of Applied Ecology* 35(2): 195-2006. DOI: <https://doi.org/10.1046/j.1365-2664.1998.00300.x>
- Krupnick, G. A. 2013. Conservation of tropical plant biodiversity: What have we done, where are we going? *Biotropica* 45(6): 693-708. DOI: <https://doi.org/10.1111/btp.12064>
- Laurance, W. F., J. Sayer and K. G. Cassman. 2014. Agricultural expansion and its impacts on tropical nature. *Trends in Ecology and Evolution* 29: 107-116. DOI: <https://doi.org/10.1016/j.tree.2013.12.001>
- Levey, D. J., B. M. Bolker, J. J. Tewksbury, S. Sargent and N. M. Haddad. 2005. Effects of landscape corridors on seed dispersal by birds. *Science* 309(5731): 146-148. DOI: <https://doi.org/10.1126/science.1111479>
- Levy-Tacher, S. I., J. R. Aguirre-Rivera, M. M. Martínez-Rivero and A. Durán-Fernández. 2002. Caracterización del uso tradicional de la flora espontánea en la comunidad lacandona de Lacanhá, Chiapas, México. *Interciencia* 27: 512-520.
- Levy-Tacher, S., N. Ramírez-Marcial, M. González-Espinosa and F. Román-Dañobeytia. 2012. Rehabilitación ecológica de áreas agropecuarias degradadas en la Selva Lacandona: una alternativa fincada en el conocimiento ecológico tradicional maya. In: Bello Baltazar, E., E. J. Naranjo Piñera and R. Vandame (eds.). *La otra innovación para el ambiente y la sociedad en la frontera sur de México*. El Colegio de la Frontera Sur. San Cristóbal de Las Casas, Chiapas, México. Pp. 248-258.
- Lindenmayer, D. B. y J. Fischer. 2006. *Habitat fragmentation and landscape change. An ecological and conservation synthesis*. Island Press, Washington, D.C., USA. 352 pp.
- Lindenmayer, D. B. y J. Fischer. 2007. Tackling the habitat fragmentation panchreston. *Trends in Ecology and Evolution* 22(3): 127-132. DOI: <https://doi.org/10.1016/j.tree.2006.11.006>
- Lôbo, D., T. Leão, F. P. L. Melo, A. M. M. Santos y M. Tabarelli. 2011. Forest fragmentation drives Atlantic forest of northeastern Brazil to biotic homogenization. *Diversity and Distribution* 17(2): 287-296. DOI: <https://doi.org/10.1111/j.1472-4642.2010.00739.x>

- López-Toledo, L. and M. Martínez-Ramos. 2011. The soil seed bank in abandoned tropical pastures: source of regeneration or invasion? *Revista Mexicana de Biodiversidad* 82(2): 663-678. DOI: <https://doi.org/10.22201/ib.20078706e.2011.2.462>
- Manly, B. F. J. 1991. *Randomization and Monte Carlo methods in biology*. Chapman and Hall. London, UK. 281 pp.
- Medellín, R. A. 1994. Mammal diversity and conservation in the Selva Lacandona, Chiapas, Mexico. *Conservation Biology* 8(3): 780-799. DOI: <https://doi.org/10.1046/j.1523-1739.1994.08030780.x>
- Medellín, R. A. and M. Equihua. 1998. Mammal species richness and habitat use in rainforest and abandoned agricultural fields in Chiapas, Mexico. *Journal of Applied Ecology* 35(1): 13-23. DOI: <https://doi.org/10.1046/j.1365-2664.1998.00272.x>
- McEuen, A. B. and L. M. Curran. 2004. Seed dispersal and recruitment limitation across spatial scales in temperate forest fragments. *Ecology* 85(2): 507-518. DOI: <https://doi.org/10.1890/03-4006>
- Nations, J. D. and R. B. Nigh. 1978. Cattle, cash, food and forest; the destruction of the American tropics and the Lacandon Maya Alternative. *Culture and Agriculture* 16(6): 1-6. DOI: <https://doi.org/10.1525/cuag.1978.16.6.1>
- Nations, J. D. and R. B. Nigh. 1980. The evolutionary potential of Lacandon Maya sustained-yield tropical forest agriculture. *Journal of Anthropology Research* 36(1): 1-30. DOI: <https://doi.org/10.1086/jar.36.1.3629550>
- Nigh, R. 2008. Trees, fire and farmers: making woods and soil in the Maya forest. *Journal of Ethnobiology* 28(2): 231-243. <https://doi.org/10.2993/0278-0771-28.2.231>
- Nigh, R. and A. W. S. Diemont. 2013. The Maya milpa: Fire and the legacy of living soil. *Frontiers in Ecology and the Environment* 11(Special Issue 1): e45-e54. DOI: <https://doi.org/10.1890/120344>
- Ochoa-Gaona, S., F. Hernández-Vázquez, B. H. J. De Jong and F. D. Gurri-García. 2007. Pérdida de diversidad florística ante un gradiente de intensificación del sistema agrícola de roza tumba-quema: un estudio de caso en la selva lacandona, Chiapas, México. *Boletín de la Sociedad Botánica de México* 81: 65-80.
- Ortega-Álvarez, R., A. Casas, F. Figueroa and L. A. Sánchez-González. 2019. Producir y conservar: nuevos horizontes en torno a los modelos de integración y separación territorial. *Sociedad y Ambiente* 18: 11-44.
- Pennington, T. D. and J. Sarukhán. 2005. *Árboles tropicales de México: manual para la identificación de las principales especies*, Tercera edición. Universidad Nacional Autónoma de México-Fondo de Cultura Económica. México, D.F., México. 253 pp.
- Potvin, C. and D. Roff. 1993. Distribution-free and robust statistical methods: Viable alternatives to parametric statistics. *Ecology* 74(6): 1617-1628. DOI: <https://doi.org/10.2307/1939920>
- Quintana-Ascencio, P. F., M. González Espinosa, N. Ramírez Marcial, G. Domínguez-Vázquez and M. Martínez-Icó. 1996. Soil seed bank and regeneration of Tropical Rain Forest from milpa fields at The Selva Lacandona, Chiapas, Mexico. *Biotropica* 28(2): 192-209. DOI: <https://doi.org/10.2307/2389074>
- R Core Team. 2013. *R: A Language and Environment for Statistical Computing*. R Foundation for Statistical Computing. Vienna, Austria. <http://www.R-project.org>
- Reina, R. E. 1967. Milpas and milperos: Implications for prehistoric times. *American Anthropology* 69(1): 1-20. DOI: <https://doi.org/10.1525/aa.1967.69.1.02a00020>
- Ricketts, T. H. 2001. The matrix matters: Effective isolation in fragmented landscapes. *American Naturalist* 158(1): 87-99. DOI: <https://doi.org/10.1086/320863>
- Saulei, S. M. and M. D. Swaine. 1988. Rain forest seed dynamics during succession at Gogol, Papua New Guinea. *Journal of Ecology* 76: 1133-1152. DOI: <https://doi.org/10.2307/2260639>
- Schupp, E. W. and M. Fuentes. 1995. Spatial patterns of seed dispersal and the unification of plant population ecology. *EcoScience* 2(3): 267-275. DOI: <https://doi.org/10.1080/11956860.1995.11682293>
- Sheldon, K. S. and N. M. Nadkarni. 2013. Spatial and temporal variation of seed rain in the canopy and on the ground of a tropical cloud forest. *Biotropica* 45(5): 549-556. DOI: <https://doi.org/10.1111/btp.12043>
- Sousa, T. R., Costa, F. R. C., Bentos, T. V., Leal Filho, N., Mesquita, R. C. G. and I. O. Ribeiro. 2017. The effect of forest fragmentation on the soil seed bank of Central Amazonia. *Forest Ecology and Management* 393: 105-112. DOI: <https://doi.org/10.1016/j.foreco.2017.03.020>
- Tabarelli, M., A. V. Aguiar, L. C. Girão, C. A. Peres and A. V. Lopes. 2010. Effects of pioneer tree species hyperabundance on forest fragments in northeastern Brazil. *Conservation Biology* 24(6): 1654-1663. DOI: <https://doi.org/10.1111/j.1523-1739.2010.01529.x>

- Uhl, C. and K. Clark. 1983. Seed ecology of selected Amazon Basin successional species. *Botanical Gazette* 144(3): 419-425. DOI: <https://doi.org/10.1086/337392>
- Uhl, C., K. Clark, H. Clark and P. Murphy. 1981. Early plant succession after cutting and burning in the upper Rio Negro region of the Amazon basin. *Journal of Ecology* 69: 631-649. DOI: <https://doi.org/10.2307/2259689>
- Van Breugel, M., M. Martínez-Ramos and F. Bongers. 2006. Community dynamics during early secondary succession in Mexican tropical rain forests. *Journal of Tropical Ecology* 22(6): 663-674. DOI: <https://doi.org/10.1017/s0266467406003452>
- Vandermeer, J. and C. Carvajal. 2001. Metapopulation dynamics and the quality of the matrix. *American Naturalist* 158(3): 211-220. DOI: <https://doi.org/10.1086/321318>
- Vieira, I. C. G., P. D. Toledo, J. D. Silva and H. Higuchi. 2008. Deforestation and threats to the biodiversity of Amazonia. *Brazilian Journal of Biology* 68(4): 949-956. DOI: <https://dx.doi.org/10.1590/S1519-69842008000500004>
- Weerasinghe, M., M. S. Ashton, E. R. Hooper and B. M. P. Singhakumara. 2019. Floristics of soil seed banks on agricultural and disturbed land cleared of tropical forests. *Restoration Ecology* 27(1): 138-147. DOI: <https://doi.org/10.1111/rec.12711>
- Wearn, O. R., D. C. Reuman and R. M. Ewers. 2012. Extinction debt and windows of conservation opportunity in the Brazilian Amazon. *Science* 337(6091): 228-232. DOI: <https://doi.org/10.1126/science.1219013>
- Wright, S. J. 2010. The future of tropical forests. *Annals New York Academy of Sciences* 1195(1): 1-27. DOI: <https://doi.org/10.1111/j.1749-6632.2010.05455.x>
- Zang, R. G., W. Y. Zhang and Y. Ding. 2007. Seed dynamics in relation to gaps in a tropical montane rainforest of Hainan Island, South China: (I) Seed Rain. *Journal of Integrative Plant Biology* 49(11): 1565-1572. DOI: <https://doi.org/10.1111/j.1774-7909.2007.00577.x>



**Appendix 1:** Presence/absence of species collected as seeds in six successional conditions in the Selva Lacandona, Chiapas, Mexico (August 1990-July 1991). Lacanjá-Chansayab = l; Bonampak-Bethel = b; FV = life form: h: herb, l: vine, a: tree, s: shrub; SD = seed dispersal, Feshy fruits or grains: a = small seeds, m = medium size seeds, v = large seeds, d = unknown fruit type; Successional conditions: Mature forests = sma; Mid-successional forests = smm; Center of *milpa* field within forests = mcb; Border of *milpa* fields within forests = mbb; Early successional forests (fallows) = aca; *Milpas* within disturbed areas = mil; grasslands = pas. \* exotic.

Family / Species	FV	SD	lsma	bsma	lsmm	bsmm	lmcb	lmbb	bmcb	bmbb	laca	baca	lmil	bmil	lpas	bpas
<b>Acanthaceae</b>																
<i>Mendoncia retusa</i> Turril	h	m	0	1	1	1	0	1	0	1	0	0	0	0	0	0
<b>Actinidiaceae</b>																
<i>Saurauia scabrada</i> Hemsl.	a	a	0	0	0	0	0	0	0	0	1	1	0	0	0	0
<b>Amaranthaceae</b>																
<i>Chamissoa altissima</i> (Jacq.) Kunth	l	a	0	0	1	1	0	0	0	0	0	0	0	0	0	0
<i>Iresine</i> spp.	h	a	1	0	0	0	1	1	1	1	0	1	1	1	1	1
<b>Anacardiaceae</b>																
<i>Spondias mombin</i> L.	a	v	1	1	1	1	0	1	0	0	0	0	0	0	0	0
<b>Annonaceae</b>																
<i>Annona mucosa</i> Jacq.	a	m	0	1	1	0	0	0	0	0	0	0	0	0	0	0
<i>Cymbopetalum bailonii</i> R.E. Fr.	a	m	0	1	1	0	0	0	0	0	0	0	0	0	0	0
<b>Apocynaceae</b>																
<i>Asclepias</i> spp.	l	m	0	1	0	0	1	1	0	0	0	0	0	0	0	0
<i>Forsteronia myriantha</i> Donn. Sm.	l	m	1	1	1	1	1	1	0	1	0	0	0	0	0	0
<i>Tabernaemontana donnell-smithii</i> Rose	a	m	1	1	1	0	0	1	0	0	0	1	0	0	0	0
<b>Araceae</b>																
sp. 1	h	v	0	1	1	1	0	0	0	0	0	0	0	0	0	0
<b>Araliaceae</b>																
<i>Dendropanax arboreus</i> (L.) Decne. & Planch.	a	m	1	0	0	1	0	0	0	0	0	0	0	0	0	0
<i>Oreopanax guatemalensis</i> (Lem. ex Bosse) Decne. & Planch.	a	m	0	0	1	1	0	0	0	0	0	1	0	0	0	0
sp. 2	h	d	1	1	1	1	0	0	0	1	0	1	0	0	0	0
<b>Arecaceae</b>																
<i>Chamaedorea</i> spp.	s	m	1	1	1	1	0	1	0	0	0	0	0	0	0	0
<b>Asteraceae</b>																
<i>Bidens</i> spp.	h	a	0	0	0	0	0	1	0	0	0	0	1	1	0	0
<i>Clibadium arboreum</i> Donn. Sm.	s	a	0	0	0	0	0	0	0	0	1	1	0	0	0	0
Asteraceae	h	a	1	1	1	1	1	1	1	1	1	1	1	1	1	1
<i>Erechtites hieraciifolius</i> (L.) Raf. ex DC.	h	a	0	0	0	0	0	0	0	0	0	0	0	0	1	0
<i>Zexmenia</i> spp.	h	a	0	0	0	0	0	0	0	0	0	1	0	1	0	0
<b>Bignoniaceae</b>																
<i>Fridericia schumanniana</i> (Loes.) L.G. Lohmann	l	m	1	1	0	0	0	0	0	0	0	0	0	0	0	0
<i>Tanaecium pyramidatum</i> (Rich.) L.G. Lohmann	l	v	1	0	1	1	0	0	0	1	0	0	0	0	0	0

## Appendix 1: Continuation.

Family / Species	FV	SD	Isma	bsma	Ismm	bsmm	lmcb	lmbb	bmcb	bmbb	laca	baca	lmil	bmil	lpas	bpas
<b>Boraginaceae</b>																
<i>Varronia spinescens</i> (L.) Borhidi	l	a	0	0	0	1	0	0	0	0	0	0	0	1	0	0
<b>Burseraceae</b>																
<i>Bursera simaruba</i> (L.) Sarg.	a	m	1	0	1	1	0	1	1	1	1	0	1	0	0	0
<i>Protium copal</i> (Schltdl. & Cham.) Engl.	a	m	1	0	0	1	1	1	1	1	0	1	0	0	0	0
<b>Calophyllaceae</b>																
<i>Calophyllum brasiliense</i> Cambess.	a	v	0	1	0	0	0	0	0	0	0	0	0	0	0	0
<b>Caricaceae</b>																
<i>Carica papaya</i> L.	h	m	1	0	0	1	0	0	0	0	1	1	0	0	0	0
<b>Celastraceae</b>																
<i>Pristimera celastroides</i> (Kunth) A.C. Sm.	s	m	0	0	0	1	0	0	0	0	0	0	0	0	0	0
<b>Clusiaceae</b>																
<i>Garcinia intermedia</i> (Pittier) Hammel	a	m	1	0	0	0	0	0	0	0	0	0	0	0	0	0
<b>Combretaceae</b>																
<i>Combretum</i> sp.	l	v	1	1	1	1	1	1	1	1	0	1	0	0	0	0
<i>Terminalia amazonia</i> (J.G. Gmel.) Exell	a	v	1	1	0	1	0	1	1	1	0	1	0	1	0	0
<b>Cyperaceae</b>																
<i>Scleria melaleuca</i> Rchb. ex Schltdl. & Cham.	h	d	0	0	0	0	0	0	0	0	0	1	0	0	1	1
<b>Dichapetalaceae</b>																
<i>Dichapetalum donnell-smithii</i> Engl.	a	m	1	1	1	1	0	0	0	0	0	0	0	0	0	0
<b>Dilleniaceae</b>																
<i>Tetracera volubilis</i> L.	s	a	1	0	1	1	0	0	0	0	0	0	0	0	0	0
<b>Dioscoreaceae</b>																
<i>Dioscorea cyanisticta</i> Donn. Sm.	l	v	1	1	0	1	0	0	1	1	0	0	0	0	0	0
<b>Euphorbiaceae</b>																
<i>Alchornea latifolia</i> Sw.	a	a	1	0	0	0	0	0	0	0	0	0	0	0	0	0
<i>Dalechampia</i> spp.	s	a	0	1	1	1	0	1	1	1	0	1	1	1	0	0
<i>Euphorbia heterophylla</i> L.	h	a	0	0	0	1	0	0	1	0	1	1	1	1	1	1
<i>Euphorbia hirta</i> L.	h	a	0	0	0	0	1	0	0	0	0	0	1	0	0	0
<i>Sapium lateriflorum</i> Hemsl.	a	a	1	1	1	1	0	0	0	0	0	0	0	0	0	0
<i>Tetrorchidium rotundatum</i> Standl.	h	m	1	0	1	1	1	1	0	0	0	1	1	0	0	0
sp. 4	h	a	0	0	0	1	0	0	0	1	0	1	0	0	0	0
<b>Fabaceae</b>																
<i>Aeschynomene</i> sp.	d	a	0	0	0	1	0	0	0	0	0	0	1	1	0	0
<i>Albizia tomentosa</i> (Micheli) Standl.	a	m	0	1	1	0	0	0	0	0	0	0	0	0	0	0

## Appendix 1: Continuation.

Family / Species	FV	SD	lsma	bsma	lsmm	bsmm	lmcB	lmbb	bmcb	bmbb	laca	baca	lmil	bmil	lpas	bpas
<i>Cajoba arborea</i> (L.) Britton & Rose	a	m	0	1	0	1	0	0	0	0	0	0	0	0	0	0
<i>Crotalaria spectabilis</i> Roth	a	a	0	0	1	0	0	0	0	0	0	0	1	0	0	0
<i>Dalbergia glomerata</i> Hemsl.	d	m	1	1	1	1	0	0	0	1	0	0	0	0	0	0
<i>Desmodium</i> spp.	h	a	0	0	0	0	0	0	0	0	0	0	1	1	0	0
<i>Dialium guianense</i> (Aubl.) Sandwith	a	m	0	1	1	1	1	0	1	1	0	0	0	0	0	0
<i>Lonchocarpus</i> spp.	a	m	0	0	0	0	0	0	0	0	0	1	0	0	0	0
<i>Machaerium floribundum</i> Benth.	l	v	1	1	0	1	0	0	0	0	0	0	0	0	0	0
<i>Rhynchosia minima</i> (L.) DC.	l	a	1	1	1	1	0	0	0	0	0	0	0	0	0	0
<i>Schizolobium parahyba</i> (Vell.) S.F. Blake	a	v	0	0	1	0	0	0	0	0	0	0	0	0	0	0
sp. 7	d	d	0	1	0	1	0	0	0	0	0	0	0	0	0	0
sp. 8	d	v	0	1	0	0	0	0	0	0	0	1	0	0	0	0
sp. 9	d	a	1	1	0	1	0	0	0	0	0	0	0	0	0	0
<b>Gesneriaceae</b>																
sp. 5	d	d	1	1	1	0	1	1	0	0	0	0	0	0	0	0
<b>Hernandiaceae</b>																
<i>Sparattanthelium amazonum</i> Mart.	d	m	1	0	1	1	0	0	0	0	0	0	0	0	0	0
<b>Lauraceae</b>																
sp. 6	a	a	0	0	1	0	0	0	0	0	0	0	0	0	0	0
<b>Malpighiaceae</b>																
<i>Heteropterys laurifolia</i> (L.) A. Juss.	s	v	1	0	1	1	0	0	0	0	0	0	1	0	0	0
<i>Psychopterys rivularis</i> (C.V. Morton & Standl.) W.R. Anderson & S. Corso	l	v	0	1	0	0	0	0	0	0	0	0	0	0	0	0
<i>Mascagnia vacciniifolia</i> Nied.	l	v	0	1	1	1	0	0	1	1	0	0	0	1	0	0
<i>Tetrapteris glabrifolia</i> (Griseb.) Small	l	v	1	0	0	1	0	0	0	0	0	0	0	0	0	0
<b>Malvaceae</b>																
<i>Hampea mexicana</i> Fryxell	a	m	0	0	1	0	0	0	0	0	0	0	0	0	0	0
<i>Heliocarpus</i> spp.	a	v	1	1	1	0	1	1	0	0	0	1	1	1	0	0
<i>Quararibea</i> spp.	a	v	1	1	1	1	0	1	0	0	0	1	0	0	0	0
<i>Sida rhombifolia</i> L.	h	a	1	0	0	0	0	0	0	0	0	0	0	1	0	0
<i>Trichospermum galeottii</i> (Turcz.) Kosterm.	a	v	0	0	0	0	0	0	0	1	0	1	0	0	0	0
<b>Marcgraviaceae</b>																
sp. 10	d	a	1	1	1	0	1	1	0	0	0	0	0	0	0	0
sp. 11	d	a	1	1	1	0	1	0	0	0	0	0	0	0	0	0
<b>Melastomataceae</b>																
<i>Miconia argentea</i> (Sw.) DC.	a	m	1	1	1	1	0	0	0	0	0	0	0	0	0	0
<b>Meliaceae</b>																
<i>Guarea glabra</i> Vahl	a	m	0	0	1	1	0	0	0	0	0	0	0	0	0	0
<i>Guarea</i> sp.	a	a	0	1	0	0	0	0	0	0	0	0	0	0	0	0

## Appendix 1: Continuation.

Family / Species	FV	SD	Isma	bsma	Ismm	bsmm	lmcB	lmbb	bmcb	bmbb	laca	baca	lmil	bmil	lpas	bpas
<i>Swietenia macrophylla</i> G. King	a	v	0	1	0	0	0	0	0	0	0	1	0	0	0	0
<i>Trichilia pallida</i> Sw.	a	m	1	0	0	0	0	0	0	0	0	0	0	0	0	0
<b>Monimiaceae</b>																
<i>Mollinedia viridiflora</i> Tul.	s	a	0	0	0	0	0	0	0	0	0	0	1	0	0	0
<b>Moraceae</b>																
<i>Brosimum alicastrum</i> Sw.	a	m	1	1	1	1	0	0	0	1	0	0	0	0	0	0
<i>Brosimum</i> sp.	a	m	0	0	1	0	0	0	0	0	0	0	0	0	0	0
<i>Cecropia</i> spp.	a	a	1	1	1	1	1	1	1	1	1	1	1	1	0	0
<i>Ficus aurea</i> Nutt.	a	a	1	1	1	1	1	1	1	1	0	1	1	1	1	0
<i>Ficus insipida</i> Willd.	a	a	1	1	1	1	1	1	0	1	1	1	0	0	0	0
<i>Ficus jimenezii</i> Standl.	a	a	1	1	1	1	0	0	1	0	0	0	0	0	0	0
<i>Ficus obtusifolia</i> Kunth	a	a	0	0	0	1	1	1	1	0	0	0	0	0	0	0
<i>Pseudolmedia</i> sp.	a	a	0	0	1	1	0	1	0	1	0	0	0	0	0	0
<b>Muntingiaceae</b>																
<i>Muntingia calabura</i> L.	a	a	0	0	0	0	0	0	0	0	1	0	0	0	0	0
<b>Orchidaceae</b>																
sp. 12	h	v	0	1	1	1	0	0	0	0	0	0	0	0	0	0
<b>Phytolacaceae</b>																
<i>Phytolacca rivinoides</i> Kunth & C.D. Bouché	h	a	0	0	0	0	0	0	0	0	0	0	1	0	0	0
<i>Thrichostigma octandrum</i> (L.) H. Walter	d	a	1	1	1	1	0	0	0	0	0	0	0	0	0	0
<b>Piperaceae</b>																
<i>Piper amalago</i> L.	s	a	0	0	0	0	1	0	0	1	1	1	1	1	0	1
<i>Piper</i> sp.1	s	a	1	1	1	1	1	1	1	0	1	1	1	1	1	1
<i>Piper</i> sp. 2	s	a	1	1	1	1	0	1	1	1	1	1	1	1	1	1
<b>Poaceae</b>																
<i>Andropogon bicornis</i> L.	h	a	0	1	0	0	0	0	0	0	0	0	0	0	1	1
<i>Hyparrhenia rufa</i> * (Nees) Stapf	h	a	0	0	0	0	0	0	0	0	0	0	0	0	1	0
<i>Lasciasis nigra</i> Davidse	h	a	0	0	0	0	0	0	0	0	0	1	0	1	1	0
<i>Paspalum conjugatum</i> P.J. Bergius	h	v	0	0	0	0	0	0	0	1	0	0	1	0	1	1
<i>Paspalum paniculatum</i> L.	h	v	0	0	0	0	0	0	0	0	0	0	1	1	1	1
<i>Paspalum virgatum</i> L.	h	v	0	0	0	0	0	0	0	0	0	0	0	0	0	1
<b>Ranunculaceae</b>																
<i>Clematis dioica</i> L.	l	v	0	0	1	0	1	1	0	0	0	1	1	1	0	0
<i>Clematis haenkeana</i> C. Presl.	l	v	1	0	1	0	0	0	0	0	0	0	0	0	0	0
<b>Rhamnaceae</b>																
<i>Gouania lupuloides</i> (L.) Urb.	s	v	0	1	0	0	0	0	0	0	0	1	1	1	0	0
<b>Rubiaceae</b>																
<i>Manettia reclinata</i> Mutis ex L.	l	v	1	1	0	0	0	0	0	0	0	0	0	0	0	0
<i>Palicourea tetragona</i> (Donn. Sm.) C.M. Taylor & Lorence	s	m	0	0	0	0	0	0	0	0	1	1	0	0	0	0
<i>Psychotria limonensis</i> K. Krause	s	m	0	1	0	1	0	0	0	0	0	0	0	0	0	0
<i>Psychotria pubescens</i> Sw.	s	m	0	0	0	0	0	0	0	0	1	1	0	1	0	0

## Appendix 1: Continuation.

Family / Species	FV	SD	lsma	bsma	lsmm	bsmm	lmcB	lmbb	bmcB	bmbb	laca	baca	lmil	bmil	lpas	bpas
<i>Rudgea cornifolia</i> (Kunth)	s	m	1	1	1	1	0	0	0	1	0	0	0	0	0	0
Standl.																
<b>Sapindaceae</b>																
<i>Paullinia tomentosa</i> Jacq.	l	m	1	0	0	0	0	1	0	1	1	0	0	0	0	0
<i>Serjania goniocarpa</i> Radlk.	l	v	1	1	1	1	0	1	0	1	0	1	1	0	0	0
<b>Sapotaceae</b>																
sp. 14	a	m	1	0	1	1	0	0	0	0	0	0	0	0	0	0
<b>Solanaceae</b>																
<i>Cestrum</i> spp.	s	a	1	1	1	1	0	0	0	0	0	1	1	0	0	0
<i>Lycianthes heteroclita</i> (Sendtn.) Bitter	s	a	1	0	0	0	1	0	0	0	0	0	0	0	0	0
<i>Lycianthes</i> spp.	l	a	0	0	0	0	1	1	1	1	0	0	0	0	0	0
<i>Solanum americanum</i> Mill.	s	a	0	0	0	0	1	0	0	0	0	0	0	0	0	0
<i>Solanum hispidum</i> Pers.	s	a	0	0	1	1	1	1	1	1	1	1	1	1	0	0
<b>Urticaceae</b>																
<i>Boehmeria ulmifolia</i> Wedd.	h	a	0	0	1	0	0	0	0	0	1	1	0	0	0	0
<b>Violaceae</b>																
<i>Rinorea</i> spp.	s	a	1	1	1	1	1	1	1	1	0	1	0	0	0	0
<b>Undetermined</b>																
sp. 15	d	a	0	0	0	1	0	0	0	0	0	0	0	0	0	0
sp. 16	d	a	0	0	0	0	0	0	0	0	0	0	0	1	1	0
sp. 17	d	a	0	0	0	0	0	1	0	0	0	0	0	0	0	0
sp. 18	d	d	0	0	1	0	0	0	1	0	0	0	0	0	0	0
sp. 19	d	v	0	0	1	1	0	0	0	0	0	0	0	0	0	0
sp. 20	d	m	0	1	0	0	0	0	0	0	0	0	0	0	0	0
sp. 21	d	m	1	0	0	0	0	0	0	0	0	0	0	0	0	0
sp. 22	d	m	0	0	1	0	0	0	1	0	0	0	0	0	0	0
sp. 23	d	a	0	0	1	1	0	0	0	0	0	0	0	0	0	0
sp. 24	d	a	0	0	0	1	0	0	0	0	0	0	0	0	0	0
sp. 25	d	a	0	0	1	1	0	0	0	0	0	0	1	0	0	0
sp. 26	d	a	0	0	0	1	0	1	0	0	0	0	0	0	0	0
sp. 27	d	a	0	0	1	1	0	0	0	0	0	0	0	0	0	0
sp. 28	d	m	1	1	0	0	0	0	0	0	0	0	0	0	0	0
sp. 29	d	m	0	1	0	0	0	0	0	0	0	0	0	0	0	0
sp. 30	d	a	0	0	0	0	0	0	0	0	0	1	0	0	0	0
sp. 31	d	a	0	0	1	1	0	0	0	0	0	0	1	1	0	0
sp. 32	d	a	0	0	0	0	0	0	1	1	0	0	0	0	0	0
sp. 33	d	a	0	0	0	0	0	0	0	0	0	1	0	0	0	0
sp. 34	d	v	1	1	1	1	0	0	0	0	0	0	0	0	0	0
sp. 35	d	a	1	1	1	1	0	0	1	0	0	0	0	0	0	0
sp. 36	d	a	0	0	1	1	0	0	0	0	0	0	0	0	0	0
sp. 37	d	a	0	0	0	0	0	0	1	1	0	1	1	0	0	0
sp. 38	d	a	1	1	1	1	0	0	1	1	0	0	0	0	0	0
sp. 39	d	m	0	0	0	0	0	0	0	0	0	0	1	0	0	0
sp. 40	d	m	0	0	1	0	0	0	0	1	0	0	0	0	0	0
sp. 41	d	a	0	0	0	0	0	0	0	0	0	1	0	0	0	0

## Appendix 1: Continuation.

Family / Species	FV	SD	lsma	bsma	lsmm	bsmm	lmcb	lmcb	lmbb	bmcb	bmbb	laca	baca	lmil	bmil	lpas	bpas
sp. 42	d	m	0	0	0	1	0	0	0	0	0	0	1	0	0	0	0
sp. 43	d	v	1	0	0	0	0	0	0	0	0	0	0	0	0	0	0
Total			60	61	70	72	25	34	26	35	17	44	31	26	14	11	

**Appendix 2:** Presence/absence of species found as seedlings in three forested successional communities in the Selva Lacandona, Chiapas, Mexico (August 1990-July 1991). Lacanjá-Chansayab = l; Bonampak-Bethel= b; Successional communities: Mature forests = sma; Mid-successional forests = smm; Early-successional forests (fallows) = aca.

Id	Family	Species	lsma	bsma	lsmm	bsmm	laca	baca
sp. 1	Rubiaceae	<i>Psychotria mombachensis</i> Standl.	1	0	1	0	0	1
sp. 2			0	0	1	0	0	0
sp. 4	Arecaceae	<i>Chamaedorea</i> spp.	1	1	1	1	1	1
sp. 5			1	1	1	1	1	0
sp. 6			0	0	1	0	0	0
sp. 7	Acanthaceae	<i>Pseuderanthemum verapazense</i> Donn. Sm.	1	1	1	1	1	1
sp. 8	Combretaceae	<i>Combretum</i> spp.	1	1	1	1	0	0
sp. 11			1	1	1	1	0	0
sp. 12	Moraceae		1	1	1	1	0	0
sp. 13	Araceae		1	1	1	1	0	0
sp. 15			1	0	1	0	0	0
sp. 16	Connaraceae	<i>Connarus lentiginosus</i> Brandegees	1	0	1	0	0	0
sp. 18	Moraceae	<i>Poulsenia armata</i> (Miq.) Standl.	1	1	1	0	0	0
sp. 19	Sapindaceae	<i>Serjania goniocarpa</i> Radlk.	1	1	1	1	1	1
sp. 20	Dryopteridaceae	<i>Ctenitis excelsa</i> (Desv.) Proctor	1	0	1	0	0	0
sp. 24	Fabaceae		1	1	1	0	0	1
sp. 27	Musaceae	<i>Heliconia</i> sp.	0	1	1	1	1	0
sp. 30	Dioscoreaceae	<i>Dioscorea</i> sp.	0	1	1	1	1	0
sp. 31			1	1	1	1	1	0
sp. 32	Ulmaceae	<i>Ampelocera hottlei</i> (Standl.) Standl.	0	1	1	1	0	0
sp. 34			1	1	1	0	0	0
sp. 35	Sapindaceae	<i>Paullinia costata</i> Schltdl. & Cham.	1	1	1	1	0	0
sp. 36			1	0	1	1	0	0
sp. 37			0	0	0	1	0	0
sp. 38			0	1	1	1	0	0
sp. 39	Piperaceae	<i>Piper glabrescens</i> (Miq.) C. DC.	0	1	0	0	1	0
sp. 41			1	1	1	1	0	0
sp. 42			1	1	1	0	1	0
sp. 43	Piperaceae	<i>Piper psylorhachis</i> C. DC.	1	1	1	1	1	1
sp. 45	Rubiaceae	<i>Psychotria limonensis</i> K. Krause	0	0	1	1	0	0
sp. 46			1	1	1	1	0	1
sp. 49	Rubiaceae		0	1	0	0	0	0
sp. 51			0	0	0	0	1	0
sp. 52	Malvaceae	<i>Hampea mexicana</i> Fryxell	1	1	1	1	0	0
sp. 54	Clusiaceae	<i>Garcinia intermedia</i> (Pittier) Hammel	0	1	1	0	0	0
sp. 55	Burseraceae	<i>Protium copal</i> (Schltdl. & Cham.) Engl.	1	0	0	1	0	0
sp. 56	Pteridaceae	<i>Pteris altissima</i> Poir.	0	1	1	0	0	0
sp. 59			1	0	1	1	0	0
sp. 60			1	0	0	1	0	0
sp. 61			0	0	1	0	0	0
sp. 62	Poaceae	<i>Pharus parvifolius</i> Nash	0	1	0	1	0	0

## Appendix 2: Continuation.

Id	Family	Species	Isma	bsma	Ismm	bsmm	laca	baça
sp. 64	Musaceae	<i>Heliconia aurantiaca</i> Ghiesbr. ex Lem.	0	1	1	0	0	0
sp. 65	Piperaceae	<i>Piper grandilimum</i> C. DC.	0	1	1	0	0	0
sp. 66			0	0	0	1	0	0
sp. 67			1	1	1	1	1	1
sp. 68			1	1	1	1	0	1
sp. 69	Piperaceae	<i>Piper uspantanense</i> C. DC.	0	1	0	0	1	1
sp. 70			1	0	0	0	0	0
sp. 71	Arecaceae	<i>Chamaedorea ernesti-augustii</i> H. Wendl.	1	1	1	1	0	0
sp. 72	Monimiaceae	<i>Mollinedia</i> sp.	1	0	0	0	0	0
sp. 73	Lauraceae		1	1	1	0	1	0
sp. 76	Arecaceae	<i>Bactris mexicana</i> Liebm. ex Mart.	1	0	0	1	0	0
sp. 77	Araliaceae	<i>Dendropanax arboreus</i> (L.) Decne. & Planch.	1	1	1	1	1	1
sp. 78	Moraceae	<i>Trophis racemosa</i> (L.) Urb.	0	1	1	0	0	0
sp. 79	Moraceae	<i>Brosimum alicastrum</i> Sw.	1	1	1	1	1	0
sp. 80	Meliaceae	<i>Guarea</i> sp.	1	1	1	1	1	0
sp. 81	Fabaceae	<i>Inga</i> sp.	0	1	1	0	0	0
sp. 83	Euphorbiaceae	<i>Alchornea latifolia</i> Sw.	0	0	0	1	0	0
sp. 84	Melastomataceae	<i>Miconia impetolaris</i> (Sw.) D. Don ex DC.	0	1	0	0	0	1
sp. 85	Annonaceae	<i>Cymbopetalum penduliflorum</i> (Dunall) Baill.	1	1	1	1	0	0
sp. 86			1	0	0	0	0	1
sp. 88	Moraceae	<i>Pseudolmedia</i> sp. 1	1	1	1	1	0	0
sp. 90			0	0	0	0	1	0
sp. 91	Arecaceae	<i>Chamaedorea oblongata</i> Mart.	0	0	1	1	0	0
sp. 92			1	0	0	0	1	0
sp. 94	Violaceae		1	0	0	0	0	0
sp. 95			0	1	0	0	0	1
sp. 96	Commelinaceae	<i>Tradescantia zanonii</i> (L.) Sw.	1	1	0	1	0	0
sp. 97			1	1	1	1	0	1
sp. 101	Moraceae	<i>Pseudolmedia</i> sp. 2	0	0	0	1	0	0
sp. 102	Arecaceae	<i>Chamaedorea elegans</i> Liebm. ex Mart.	0	1	1	1	0	0
sp. 104			1	1	0	1	0	0
sp. 105	Violaceae	<i>Rinorea guatemalensis</i> (S. Watson) Bartlett	1	1	1	1	0	1
sp. 108			1	0	1	1	0	0
sp. 109	Clusiaceae	<i>Calophyllum brasiliense</i> Cambess.	1	1	0	0	0	1
sp. 110	Malvaceae	<i>Quararibea yunckerii</i> Standl.	1	1	0	1	0	0
sp. 113	Anacardiaceae	<i>Spondias mombin</i> L.	0	1	0	1	1	0
sp. 116	Sapindaceae	<i>Cupania dentata</i> Moc. & Sessé ex DC.	1	1	1	1	1	0
sp. 117	Fabaceae	<i>Bauhinia rubeleruziana</i> Donn. Sm.	0	1	0	1	0	1
sp. 118	Rubiaceae	<i>Palicourea tetragona</i> (Donn. Sm.) C.M. Taylor & Lorence	1	1	1	0	1	1
sp. 119			0	0	0	1	0	0
sp. 120			0	0	1	0	0	0
sp. 121	Sapotaceae	<i>Pouteria dourlandii</i> (Standl.) Baehni	0	1	0	0	0	0
sp. 122	Poaceae		0	0	0	0	1	0



## Appendix 2: Continuation.

Id	Family	Species	Isma	bsma	Ismm	bsmm	laca	baca
sp. 123			0	0	0	1	0	0
sp. 127			0	0	0	1	0	0
sp. 128	Poaceae		0	1	0	1	1	1
sp. 129	Violaceae		1	1	0	1	0	0
sp. 130	Rubiaceae		0	1	0	0	0	0
sp. 131			0	1	0	1	0	0
sp. 132			0	1	0	1	0	0
sp. 141	Arecaceae	<i>Sabal</i> sp. 1	1	1	0	1	0	0
sp. 143	Fabaceae	<i>Desmodium</i> sp.	0	0	0	0	1	0
sp. 146	Fabaceae	<i>Erythrina</i> sp.	0	1	0	0	0	0
sp. 147			0	1	0	1	1	0
sp. 149			0	0	0	0	1	0
sp. 151	Sapotaceae	<i>Pouteria</i> sp.	0	0	0	1	0	0
sp. 152	Meliaceae	<i>Guarea glabra</i> Vahl	0	0	0	0	1	0
sp. 153	Piperaceae	<i>Piper aeruginosibaccum</i> Trel.	0	0	1	0	1	0
sp. 154	Rubiaceae	<i>Rudgea cornifolia</i> (Kunth) Standl.	0	1	0	1	0	0
sp. 156	Rubiaceae	<i>Psychotria marginata</i> Sw.	0	1	0	1	0	0
sp. 157	Rubiaceae		0	1	0	1	0	0
sp. 159			0	1	0	0	0	0
sp. 161	Fabaceae	<i>Dialium guianense</i> (Aubl.) Sandwith	0	1	0	1	0	0
sp. 163			0	1	1	0	0	0
sp. 164	Moraceae	<i>Cecropia peltata</i> L.	0	0	0	1	0	0
sp. 168	Arecaceae	<i>Sabal</i> sp. 2	0	0	0	1	0	0
sp. 172	Pteridaceae	<i>Adiantum pulverulentum</i> L.	0	1	0	0	0	0
sp. 173	Costaceae	<i>Costus</i> sp.	0	1	1	1	1	1
sp. 174			1	1	1	0	0	0
sp. 175	Rubiaceae	<i>Psychotria pleuropoda</i> Donn. Sm.	0	0	0	1	0	0
sp. 178	Poaceae	<i>Olyra latifolia</i> L.	0	0	0	1	0	0
sp. 179			0	1	0	1	1	1
sp. 180			0	1	0	1	0	0
sp. 181	Malpighiaceae	<i>Bunchosia lindeniana</i> A. Juss.	0	0	1	0	0	0
sp. 183	Ochnaceae	<i>Ouratea luscens</i> (Kunth) Engl.	0	0	0	0	1	1
sp. 185			0	1	0	1	0	0
sp. 187	Myrsinaceae	<i>Ardisia nigrescens</i> Oerst.	0	0	0	1	0	1
sp. 188	Musaceae		0	0	0	0	1	1
sp. 192			1	0	1	0	0	0
sp. 194			0	1	0	1	0	1
sp. 195	Rubiaceae	<i>Psychotria</i> sp.	0	0	1	0	1	0
sp. 197			0	0	0	0	1	1
sp. 198	Rubiaceae		1	0	1	0	1	1
sp. 199			0	0	0	1	1	1
sp. 202			0	0	0	0	1	1
sp. 204			1	1	1	0	0	0

## Appendix 2: Continuation.

Id	Family	Species	lsma	bsma	lsmm	bsmm	laca	baca
sp. 206	Rubiaceae	<i>Psychotria pubescens</i> Sw.	0	0	0	0	1	1
sp. 207	Fabaceae		0	0	1	0	0	0
sp. 208			1	0	0	0	0	0
sp. 209			0	1	0	0	0	0
sp. 213			0	0	1	0	0	0
sp. 215			0	1	0	1	0	0
sp. 216	Flacourtiaceae	<i>Casearia nitida</i> Jacq.	0	0	1	1	0	0
sp. 218	Piperaceae	<i>Piper aduncum</i> L.	0	0	0	0	0	1
sp. 223			1	0	1	0	0	0
sp. 229	Commelinaceae		0	0	0	0	0	1
sp. 230	Fabaceae		0	0	0	0	1	0
sp. 231	Asteraceae	<i>Pseudelephantopus spicatus</i> (Juss. ex Aubl.) C.F. Baker	0	0	0	0	1	1
sp. 232			0	0	0	1	0	0
sp. 233	Poaceae		0	0	0	0	1	1
sp. 236			0	0	1	1	0	0
sp. 237	Myrsinaceae	<i>Ardisia nigropunctata</i> Oerst.	0	0	0	1	0	0
sp. 240	Moraceae		0	0	0	0	1	0
sp. 243			0	0	0	0	1	0
sp. 246	Rutaceae	<i>Citrus × limon</i> (L.) Osbeck	0	0	0	0	1	0
sp. 247	Amaranthaceae	<i>Iresine</i> sp.	0	0	0	0	1	1
sp. 249	Asteraceae	<i>Hebeclinium macrophyllum</i> (L.) DC.	0	0	0	1	1	1
sp. 250	Poaceae		0	1	0	0	0	1
sp. 252	Verbenaceae	<i>Lantana hispida</i> L.	0	0	0	0	0	1
sp. 253	Asteraceae	<i>Neurolaena lobata</i> (L.) Cass.	0	0	0	0	1	1
sp. 255	Asteraceae	<i>Baccharis trinervia</i> (Lam.) Pers.	0	0	0	0	1	0
sp. 256	Piperaceae	<i>Piper auritum</i> L.	0	0	0	0	0	1
sp. 257	Fabaceae	<i>Lonchocarpus</i> sp.	0	0	0	0	1	0
sp. 259	Burseraceae	<i>Bursera simaruba</i> (L.) Sarg.	0	0	0	0	1	0
sp. 262	Denstaedtiaceae	<i>Pteridium aquilinum</i> (L.) Kunth	0	0	0	0	1	0
sp. 263	Asteraceae	<i>Clibadium arboretum</i> Donn. Sm.	0	0	0	0	1	1
sp. 268	Cyperaceae	<i>Scleria gaertneri</i> Raddi	0	0	0	0	0	1
sp. 271	Caricaceae	<i>Vasconcellea cauliflora</i> (Jacq.) A. DC.	0	0	0	0	1	0
sp. 273	Solanaceae	<i>Lycianthes synanthera</i> (Sendt.) Bitter	0	0	0	0	0	1
sp. 275	Rubiaceae	<i>Hoffmannia riparia</i> Standl.	0	0	0	0	1	0
sp. 280			0	0	0	0	1	0
sp. 283	Moraceae		1	0	1	0	0	0
sp. 285			1	1	0	0	0	0
sp. 286			1	0	0	0	0	0
sp. 287			0	0	0	0	1	0
sp. 288	Rubiaceae		0	0	0	0	0	1
sp. 289			0	0	0	0	1	0
sp. 290			0	0	0	0	1	0
sp. 291			0	0	0	0	1	1

## Appendix 2: Continuation.

Id	Family	Species	lsma	bsma	lsmm	bsmm	laca	baça
sp. 293	Araceae		0	0	0	0	0	1
sp. 294			1	0	1	0	0	0
sp. 295			0	0	1	0	0	0
sp. 296	Polypodiaceae		0	0	1	0	0	0
sp. 297			1	0	0	0	0	1
sp. 298			1	0	1	0	0	0
sp. 299	Polypodiaceae		1	0	0	0	0	0
sp. 300	Polypodiaceae		0	0	0	1	0	0
sp. 301	Euphorbiaceae	<i>Acalypha diversifolia</i> Jacq.	0	0	0	1	1	1
sp. 303			0	0	0	0	0	1
sp. 304	Cyperaceae	<i>Rynchospora radicans</i> (Schltdl. & Cham.) H. Pfeiff.	0	0	0	0	0	1
sp. 305			0	0	0	1	0	1
sp. 306			1	0	0	0	0	1
sp. 307	Rubiaceae	<i>Borreria laevis</i> M. Martens & Galeotti	0	0	0	0	0	1
sp. 308	Fabaceae	<i>Mimosa ervendbergii</i> A. Gray	0	0	0	0	0	1
sp. 310			0	0	0	0	0	1
sp. 314	Commelinaceae		0	1	0	1	0	1
sp. 315			0	1	0	0	0	1
sp. 317			0	1	0	1	0	0
sp. 319			0	0	0	0	0	1
sp. 320			0	0	0	0	0	1
sp. 321			0	0	0	0	0	1
sp. 323			0	1	0	1	1	0
sp. 329	Poaceae	<i>Streptochaeta spicata</i> Schrad. ex Nees	0	1	0	1	0	0
sp. 331			0	0	0	1	0	0
sp. 332			0	1	0	0	0	0
sp. 333	Rubiaceae	<i>Psychotria</i> sp.	0	1	0	0	0	0
sp. 335	Orchidaceae		0	1	0	0	0	0
sp. 339	Moraceae	<i>Ficus</i> sp.	0	1	0	0	0	0
sp. 340	Iridaceae	<i>Neomarica gracilis</i> (Herb.) Sprague	0	1	0	0	0	0
sp. 341			0	1	0	0	0	0
sp. 342			0	1	0	0	0	0
sp. 343			0	1	0	0	0	0
sp. 345			0	1	0	0	0	0
sp. 346	Passifloraceae	<i>Passiflora</i> sp.	0	0	0	0	0	1
sp. 347			0	0	0	0	1	0
sp. 349	Araceae		0	0	1	0	1	0
sp. 350			0	1	0	1	1	1
sp351			1	0	0	0	1	0
sp. 352			0	0	0	0	1	1
sp. 353			1	0	0	0	1	0
sp. 355			0	0	1	0	0	0
sp. 356			1	0	0	0	0	0

## Appendix 2: Continuation.

Id	Family	Species	lsma	bsma	lsmm	bsmm	laca	baca
sp. 357			1	0	0	0	0	0
sp. 358			1	0	0	1	0	0
sp. 359			0	0	0	1	0	0
sp. 360			0	0	0	1	0	0
sp. 361			0	0	0	1	0	0
sp. 364			0	0	0	1	0	0
sp. 365	Rubiaceae		0	0	0	1	0	0
sp. 366			0	0	0	1	0	0
sp. 367	Araceae		0	0	0	1	0	0
sp. 368			0	1	0	1	0	0
sp. 369	Rubiaceae		0	1	0	0	0	0
sp. 372	Urticaceae	<i>Urera</i> sp.	0	0	0	0	0	1
sp. 377			0	0	0	0	0	1
sp. 392			1	0	0	0	0	0
sp. 394			0	0	0	0	0	1
sp. 398	Asteraceae		0	0	0	1	0	0
Total			69	96	74	96	67	59