



# Factors of selection, standard universals, and the standardisation of German relativisers

Simon Pickl<sup>1,2</sup> 

Received: 1 December 2018 / Accepted: 2 June 2019 / Published online: 16 July 2019  
© The Author(s) 2019

## Abstract

This contribution explores the concept of selection as an integral part of Haugen’s standardisation model from a theoretical as well as an empirical angle. It focuses on different types of factors of selection and how they are relevant to the study of selection processes both on the level of individual variants and whole varieties. The question of why standard languages appear to differ systematically from vernaculars and at the same time exhibit remarkable resemblances among each other is addressed, and characteristic features of standard languages are traced to general conditions of standardisation processes. A case study on the standardisation of German relativisers illustrates how different factors of selection combine in the dynamics of linguistic structure, variation, attitudes, and codification. It also shows how general tendencies of selection can lead to similar structures across standard languages, while it becomes clear that register variation and the historical development and changing evaluation of stylistic varieties can be crucial in order to explain the selection or de-selection of linguistic forms.

**Keywords** Selection · Einar Haugen · German · Historical linguistics · Relativisers · Standardisation

## Selection

In Haugen’s (1966) paper, he describes “the *selection* of some kind of model from which the norm can be derived” (Haugen 1966: 932) as crucial for the codification and elaboration of a language and differentiates between choosing an existing

---

✉ Simon Pickl  
simon.pickl@sbg.ac.at; sp886@cam.ac.uk

<sup>1</sup> Fachbereich Germanistik, Universität Salzburg, Erzabt-Klotz-Str. 1, 5020 Salzburg, Austria

<sup>2</sup> Faculty of Modern and Medieval Languages, Raised Faculty Building, University of Cambridge, Sidgwick Avenue, Cambridge CB3 9DA, UK

vernacular as model and constructing a new standard by way of combining existing or reconstructed forms to conceive a new norm. In Haugen (1982: 271), he characterizes selection as “a form of *policy planning*, which in this case establishes that a given linguistic *form*, be it a single item or a whole language, shall enjoy (or not enjoy) a given status in a society”. He thus refers to two types of selection: the selection of a variety on the one hand,<sup>1</sup> and the selection of variants on the other hand. Haugen calls these two types of selection “rival hypotheses concerning selection: (a) that an SL (standard language) is (or should be) based on a single dialect, that is, someone’s vernacular; (b) that an SL is (or should be) a composite of dialects (the nature of the composition being left unspecified). We may call the first the UNITARY thesis and the second the COMPOSITIONAL thesis” (Haugen 1982: 564). Deumert and Vandebussche (2003: 4) choose a less antithetical terminology in distinguishing between two types, rather than rival theses, of selection: “monocentric” selection—i.e. on the basis of an existing variety—and “polycentric” selection—i.e. as the eclectic combination of individual linguistic variants,<sup>2</sup> and van der Wal’s (2007) analogical distinction between “macro-” and “micro-selection”, which will be used in this paper, even seems to suggest that both types of selection should be combined in a unified model of selection.

In Haugen’s (1966: 932) discussion of selection, he refers to varieties spoken by socially or geographically distributed vernaculars, i.e. diastratic and diatopic varieties which are associated with “groups of people”, and describes arising conflicts as tensions between these groups. The diaphasic dimension, and therefore intraindividual and stylistic variation, is conspicuously absent here, perhaps because the relevance of register differences seems trivial. Selection on the macro-level is usually understood in the geographical or social sense; the relevance of formal or written registers, however, is pointed out frequently (e.g. Milroy and Milroy 2012: 30).

### Between micro-selection and macro-selection

Any standardisation history can be characterised in terms of whether the standard is a result of micro- or macro-variation. In their introduction to the volume *Germanic Standardizations: Past to Present*, Deumert and Vandebussche (2003: 4–5) note that “polycentric selection seems to be rather more common [than monocentric selection] in language history. Most standard languages are composite varieties which have developed over time, and which include features from several dialects.”

Arguably, however, some standardisation histories are based on a combination of both processes, by selection on the micro- and the macro-level. Even though Haugen (1972) presents the “unitary thesis” and the “composite thesis” of selection as competing rivals, he concedes “that both theses are true—and false—in varying degrees according to time and place” (Haugen 1972: 564). Van der Wal (2007), for instance, shows that Dutch was standardised mainly through a process of macro-selection in

<sup>1</sup> Note that this type is not part of Milroy and Milroy’s (2012: 22) definition of *selection*.

<sup>2</sup> Not to be confused with Stewart’s (1968: 534) distinction between monocentric and polycentric *standardisation*.

the sixteenth century, which led to a situation where the standardisation of Dutch was mainly focussed on the northern part of the Low Countries, whereas once the north was established as the focal point of standardisation the subsequent centuries saw a further consolidation of the norm through the selection of variants on the micro-level. German, on the other hand, was heading towards a supra-regional norm with distinctly East Upper German features around 1500, when a competing norm based on East Central German characteristics developed in the course of the Reformation and Luther's increasing influence (Mattheier 2003: 216–217), so that by the sixteenth century, two distinct major regional norms had formed: *Gemeines Deutsch* in the catholic south and *Lutherdeutsch* in the protestant regions, a situation which Mattheier (2003: 218) calls “norm dualism”. Both varieties were themselves the result of processes of micro-selection that incorporated variants from within the larger regions in question. The ensuing struggle between *Gemeines Deutsch* and *Lutherdeutsch*, in which the East Central German norm ultimately prevailed, is clearly an example for macro-selection; however, at the same time the southern norm incorporated more and more variants from the northern norm (Mattheier 2003: 218), so that it was considerably ‘diluted’ by the time it was finally replaced by the northern norm in the late eighteenth century.

In addition to various conceivable combinations of micro- and macro-variation, because of their very nature also gradations between the two processes are possible. If varieties are conceived of as sets of linguistic features which show a coherent (Guy and Hinskens 2016) social, geographical or situational distribution, then the transition between the selection of individual variants, small groups of similarly distributed variants and larger sets of co-occurring variants which give rise to linguistic varieties (Berruto 2010: 229) is gradual. If general factors that favour some variants over others because of their distribution can be identified, then these factors apply to potentially large numbers of variants equally, so that combinations of variants that can be understood as (parts of) coherent varieties are affected at once. Variants that are linguistically related, e.g. by exhibiting the same sound shift or the same suffix, will also tend to lend themselves similarly to being selected or de-selected. This is also true for variants that are selected or de-selected because of attitudes that are borne towards them: If a particular variant is held in high esteem, the same is probably also true for variants of the same variety, so that a larger group of features of that variety—or the variety as a whole—will be selected. What we could term ‘meso-selection’—the selection of sets of coherent variants—is likely to occur when several factors concerning the distribution, linguistic structure, or evaluation of variants are competing, so that different varieties are affected to differing degrees and contribute to the resulting standard in varying portions. In other words, it is likely for a variant that is (de-)selected to be (de-)selected as part of a variety. Quite often, the task of establishing the factors that have led to the selection of an individual variant will come down to identifying the variety it belongs to and the reason why this variety is likely to contribute variants to selection.

## Selection, codification, and selection criteria

Haugen (1966: 932–933) points out that the construction of a new standard from existing variants has “[t]o some extent [...] happened naturally in the rise of the traditional norms”. He refers to the fact that micro-selection can take place in an unguided manner, and possibly below the threshold of consciousness of the language users; we might call this ‘informal’ selection as opposed to ‘formal’ selection through codification<sup>3</sup> or speak of implicit selection ‘from below’ in such cases.<sup>4</sup> These are processes of levelling (Stewart 1968: 534; Mattheier 2003: 214) involving the reduction of variability (Milroy and Milroy 2012) which take place in the emergence of written norms but do not necessarily result in fully-fledged standardisation. Only with ensuing codification, more conscious and deliberate efforts of selecting variants take place in an explicit selection ‘from above’ which culminates in ideologies of language correctness. In other words: codification involves selection, but selection does not necessarily involve codification.

In this sense, we may understand codification as explicit (micro-)selection. Codification usually implies some form of selection, at least where it does not merely reproduce existing codices. Codification often not only tells us which forms were selected but also often give reasons why they were selected. In this sense, codification adds a layer to the mechanisms of selection: it informs us about actual or purported criteria that govern the process of selection. The motives that agents of codification give may be in line with reasons that we linguists would identify, but often linguists will dispel them as rationalisations of decisions made on the basis of ideologies and determine other reasons instead.<sup>5</sup> There is a difference between (alleged) selection **criteria**, which are adduced by grammarians and other codifiers, and (actual) **factors** of selection, which can be determined through linguistic scrutiny.<sup>6</sup>

As outlined above, selection criteria are understood to be reasons that are reported explicitly as motivations for selection in codices. As Davies and Langer (2006: 33) put it, “[t]hose involved in the selection process [...] have always tried to and still try to justify their judgments in various ways.” These justifications can be categorised in various ways and pigeonholed e.g. in the categories of function, analogy, (good) usage (usually that of a prestigious social group; Davies and Langer 2006: 28), moral and aesthetics. Since selection criteria are not central to this contribution, I refer the reader to their discussion in Davies and Langer (2006: 33–42).

<sup>3</sup> Based on Stewart’s (1968: 534) distinction between formal and informal standardisation.

<sup>4</sup> See Elspaß (2005) and Elspaß et al. (2007) for different uses of *from below* and *from above* in historical linguistics. Jones (1998: 330, 346) uses the concepts of *standardisation from below* and *from above*.

<sup>5</sup> Silverstein (1979: 193) argues that “[i]f we compare such [=linguistic] ideologies with what goes under the name of ‘scientific’ statements about language, we might find that in certain areas the ideological beliefs do in fact match the scientific ones, though the two will, in general, be part of divergent larger systems of discourse and enterprise.”

<sup>6</sup> It should be pointed out that it is not suggested that there is a fundamental distinction between the grammarians’ approach and the linguists’ approach (even more so since both groups can be said to consist of language experts): both are embedded in their own systems of ideas and therefore, in this sense, ideological.

## Factors of selection

In contrast to selection criteria, which are largely restricted to codification contexts and may or may not reflect the actual motives for selection, factors of selection help us describe the mechanisms of selection from a linguistic viewpoint irrespective of whether selection took place implicitly from below or explicitly from above. Prescriptive statements in codification may themselves be a factor (e.g. Auer 2009a; Anderwald 2016; Havinga 2018). Glaser (2003: 60–67), who discusses the selection of variants in the case of German from an areal perspective, maintains that the problem of identifying the causal factors of selection is unresolved (2003: 60–61). Besch (1967, 2003) has formulated five ‘explanatory principles’ which help to account for which variants prevailed in German. They will not be discussed in detail here (but see Footnotes 9, 10, and 12 below); for a critical discussion see Mattheier (1981), who calls into question their explanatory power, while Langer (2001: 44–45) finds them insufficient to explain the de-selection of periphrastic *tun* in German.

Besch formulated his five principles in the context of variant selection in the history of German, and at least one of his principles, (“Landschaftskombinatorik”<sup>7</sup>), which holds that variants that appear in a particular combination of dialect areas have higher chances of being selected, is restricted to the German context because it relies on specific regions in their specific historical context. In contrast, his other principles (“Geltungsareal”, “Geltungsgrad”, “strukturelle Disponiertheit”, and “Geltungshöhe”) are at least in virtue universally applicable (Mattheier 1981: 281). This distinction between **universal** factors which are relevant in any standardisation process and **historical** factors which affect the selection in the standardisation of a particular language is a crucial one because it concerns the generalisability of factors of selection.<sup>8</sup> For instance, the effect that a more widely used variant is more likely to be selected as a standard variant can be considered a universal factor. If, on the other hand, a particular region has proven to be more likely to lend variants to the emerging standard in a specific context due to historical reasons, this can be considered a historical factor.

A further distinction derives from the nature of the factors in question and their ontological relation to the respective linguistic forms. Factors of selection can, on the one hand, result from linguistic properties of the selection candidates, i.e. their phonological, morphological, syntactic etc. form or structure (potentially in relation to other forms). Such factors can be called **structural** factors of selection. For example, a linguistic form might have higher chances of being selected if it is morphologically more transparent or more regular, or if it is more clearly distinguishable

<sup>7</sup> The terms for Besch’s principle are rather opaque in German and virtually impossible to render in English. See Langer (2001: 44–45) for English periphrases.

<sup>8</sup> Mattheier (1981: 281) makes a similar distinction between ‘historical’ and ‘ahistorical’ principles in the emergence of the German supraregional written norm.

from other forms.<sup>9</sup> Factors can, however, also tend to favour some variants over others because of their distribution in space, society, or across registers; we can call these factors **distributional** factors. The examples for universal and historical factors above are both examples for distributional factors. In addition, the tendencies that variants used by the higher classes or variants that belong to formal registers are selected can be classified as distributional factors.<sup>10</sup> Because registers and social strata, and to some degree also the particular regions, are often linked to attitudes towards these domains, the prestige they are perceived to have has a direct impact on the valorisation of linguistic variants and varieties used in them, which in turn is a factor in selection.

Because of this, we must characterise factors as to whether—or to what degree—they are **attitudinal**. Attitudinal factors are an expression of language ideologies and can reflect covert or overt attitudes. They concern the evaluation of linguistic forms as appealing or unappealing, as better or worse, or, especially in a standardisation context, as correct or incorrect.<sup>11</sup> Just as positive attitudes can lead to a favourable assessment of a linguistic form in selection, negative attitudes can result in the de-selection of variants or entire varieties. This effect was particularly strong in the context of linguistic purism (e.g. Langer and Davies 2005) and can find expression in the stigmatisation of linguistic variants (Langer 2001), which leads to their de-selection (Davies and Langer 2006). Since, according to Silverstein (1979: 193), “ideologies about language, or linguistic ideologies, are any sets of beliefs about language articulated by the users as a rationalization or justification of perceived language structure and use”, attitudinal factors can be analysed with regard to language users’ rationalisations or justifications of their attitudes. Such ‘adduced reasons’ can be either structural (i.e. a variant is preferred because its linguistic properties are viewed as better than others) or distributional (i.e. a variant is preferred because the region/class/register in which it is used is viewed as more prestigious than others).<sup>12</sup>

<sup>9</sup> Besch (2003: 2262) calls this the principle of ‘structural propensity’ or simply the ‘structural principle’.

<sup>10</sup> Besch’s principles of “Geltungsareal”, “Geltungsgrad” and “Geltungshöhe” are all distributional factors of selection. They concern the effect of the size of the area in which a variant is used, the relative frequency with which a variant is used, and the social stratum in which the variant is used on the likelihood of being selected.

<sup>11</sup> It should be noted here that in a standardisation context, attitudes can be self-reinforcing: linguistic forms which are selected to become part of the standard because of their positive evaluation will be assessed even more positively as a result. The same goes, *mutatis mutandis*, for negatively evaluated forms. The cycle is complete when the (non-)selected variants are seen as iconic (Irvine and Gal 2000) of their users’ intrinsic traits: “(1) in a process of selection, certain variants are not elected as the correct ones; (2) the ones not elected receive a connotation as ‘vulgar’ and ‘dialectal’; (3) the people using these vulgar or dialectal forms are branded as socially and intellectually inferior.” (Stein 1994: 7).

<sup>12</sup> Besch’s principle of “Geltungshöhe” is distributional because it concerns the social distribution of a linguistic form; it is also attitudinal because the prestige of the social groups that use such a form has a positive effect on its likelihood of being selected (Besch 2003: 2262).

## Universal factors of selection and standard universals

If there are universal factors of selection, these will lead to specific linguistic characteristics that are typical of standard languages; conversely, features typically found in standard languages are likely the result of universal factors of selection. It seems fairly safe to say that there are no linguistic features which are shared by all standard languages; in this sense, there are no standard universals in the strict sense. In an account of attempts to list defining features of standard languages, Stein (1994: 3) concludes that “it is [...] clear that an attempt at such a definition must be, not categorical, but prototypical, so that it can accommodate the specific varietal and historical conditions of each individual case”. This may seem like a partial departure from the distinction between universal and historical features just introduced, but the key notion here is that standard universals need not be found in every standard language; they only need to be found typically in a standard language to be considered (relatively) universal, such that ‘standardness’ is a fuzzy concept.

The notion of **standard universals** (or ‘standardversals’; De Vogelaer and Seiler 2012: 14; Seiler 2019) can be understood as a complement to the concept of “vernacular universals” postulated by Chambers (2004) (see also Filppula et al. 2009a), i.e. nonstandard features that are found in vernaculars around the world and which “occur not only in working-class and rural vernaculars but also in child language, pidgins, creoles and interlanguage varieties” (Chambers 2004: 128). “Socially, the vernacular universals appear to fall into well-defined patterns in the acrolect-basilect hierarchy, but functionally there appear to be several disparate principles at work (from motor economy to cognitive overload)” (Chambers 2004: 130). Using the label *vernacular* for this concept raises the question of whether it has a non-vernacular counterpart, i.e. features that are found in standard languages anywhere in the world and which can be derived functionally from other principles than the ones envisaged for vernacular universals by Chambers. Vernacular universals are classified by Chambers as “primitive features” (a choice of term which may be disputed due to its connotations), which expresses that such features can be seen as largely untouched by language ideology or language policy. While the vernacular is “primitive”, the standard is “learned” (Chambers 2004: 139). The key idea here is that while vernacular universals are found in nonstandard varieties anywhere in the world because they emerge as a result of basic principles of language processing, standard universals can be found in standards around the world because they are the result of universal principles that govern variant selection in standardisation.

The very notion of vernacular universals testifies, to an extent, of standard language ideologies: The fact that we need a term for vernacular universals shows that non-vernacular (i.e. standard) features are, implicitly, still seen as the unmarked case, where the opposite seems more plausible (Filppula et al. 2009b: 5–8). In this sense, Trudgill (2009: 307) argues regarding multiple negation that “it is difficult to argue for it as a vernacular universal when in fact it is confined to the vernaculars simply because it has been lost in Standard English—because of a linguistic change that took place in (pre-)Standard English.” This means that vernacular universals are actually ‘normal’, unmarked language features, while standard universals

are ‘abnormal’, typologically marked and in need of explanation (De Vogelaer and Seiler 2012: 14; Seiler 2019).

This calls for a shift of focus from the “search for *vernacular universals*” (Trudgill 2009: 304), which, according to Trudgill (2009: 305), “has ultimately been in vain”, to the search for standard universals (bearing in mind that ‘universal’ is a prototypical, i.e. fuzzy, notion). According to Milroy and Milroy (2012: 6), “we do not, in fact, know whether *standard* languages can be conclusively shown to have *no* purely linguistic characteristics that differentiate them from non-standard forms of language (the matter has not really been investigated)”.<sup>13</sup> If it is true, however, that there are peculiarities which are typically found in standard languages (see Weiß’s (2004: 649) idea of “the linguistically exceptional nature of standard languages”), we need to understand what features these are, and why they are typical of standard languages. Such standard universals are necessarily the result of selection, and their (relative) universality derives from factors of selection which are universal across standardisation histories.

The notion of Standard Average European (SAE), coined by Whorf (1941) and itself a fuzzy category, is intended to describe the finding that several linguistic features—among them definite and indefinite articles, relative clauses with relative pronouns, HAVE-perfect, etc.—are found in most European languages but rarely elsewhere (hence Dahl’s (1990) notion of SAE “as an exotic language”). This circumstance has been interpreted as a *sprachbund* by Haspelmath (2001), who discusses a number of—typologically marked (Haspelmath 2001: 1492)—features which are shared by several European languages. More recently, however, it has been pointed out that the term *Standard Average European* acquires a new meaning when viewed in the light of standardisation:

The findings are usually explained as the result of structural convergence due to geographical adjacency: Standard Average European forms a *sprachbund*, thus it is an areal phenomenon. However, the European *sprachbund* is defined on the basis of features of the codified standard varieties in the first place. The term *Standard Average European* thus obtains another meaning which has not been intended in its original formulation by Whorf (1941) and his successors. If it turns out that Standard Average European features are significantly less pervasive in vernaculars as compared to codified standard languages, linguists will have to propose a different explanation for its historical emergence. It is then not a genuinely areal, but rather a sociolinguistic, or stylistic phenomenon, rooted in common strategies of codification or even in (ideologically motivated) metalinguistic beliefs rather than in geographical adjacency. (De Vogelaer and Seiler 2012: 14)

Such “common strategies of codification” can well be understood as (at least in the European context) universal factors of selection in that certain features are favoured over others in the shaping of a standard language. De Vogelaer and Seiler describe this as a “sociolinguistic, or stylistic phenomenon”, which relates

<sup>13</sup> Milroy and Milroy (2012: 6) argue that reduced optional variability is at least one linguistic characteristic of standard languages, but they concede that there may be more.



to distributional characteristics of the variants in question and their indexical value. They also identify the potential role of language ideology and metalinguistic beliefs, which leads us to posit factors of selection that are universal, distributional, and to an extent attitudinal. This raises the question of whether there can also be universal (attitudinal or non-attitudinal) structural factors, and how they interact with universal distributional factors.

There appear to be linguistic characteristics which are typical of standard languages by mere frequency, e.g. a high degree of nominalisation or hypotaxis (e.g. Stein 1994: 3), which may to an extent be down to their use in written language. A number of “systematic differences between dialects and standard languages” are discussed by van Marle (1997). Generally, there seems to be a tendency for standard languages to incorporate features which allow for flexible syntactic integration and semantic compaction. At the same time, standard languages seem to prefer (combinations of) linguistic variants which are functionally unambiguous, especially in the written mode, where there is limited scope for disambiguation through contextualisation or deictic operations (e.g. the functional reorganisation and differentiation of increasingly specialised conjunctions towards written standard German; Sonderegger 1979: 290; Betten 1987: 87). On the whole, many of the developments during selection seem to be aimed at optimising the linguistic code’s functioning in the written medium, which can be seen as differing fundamentally from language processing in oral speech (Auer 2009b).

Overall, during selection the future standard variety becomes more and more written-like; a process which Koch and Oesterreicher (1994) have called “Verschriftlichung” and which is linked to the standard language’s association with the written mode, especially in times when textualisation of society takes place. *Verschriftlichung* thus involves Givón’s (1979) notion of syntactization:

Spoken language [...] stands in close proximity to the pragmatic mode [Givón 1979]. However, it also exhibits a tendency towards detachment from the situation and ‘syntactization’. Written language uses these tendencies and develops them further in the direction of the syntactic mode with its rich and dense verbalization [...]. At the same time, more economical and less integrated strategies of verbalization contrasting with these communicative conditions remain unused, although they are available in the linguistic system. (Koch and Oesterreicher 2012: 453)

In Stein’s (1994: 5–6) words, “syntax becomes an organizational necessity to regulate expressive traffic above all in the written language, where the absence of nonlinguistic, gestural and situational context information necessitates the support of the conventionalized and socially controlled organization principles (Bartsch 1987: 15) to ensure its functioning” (see also Eisenberg’s (1995) distinction between symbol grammar and context grammar). In this sense, the selection of features in standardisation is to be seen in the context of a harnessing of—above all syntactic—features that prepare the standard variety for its functioning in the written medium (also Stein 1997: 45).

On the attitudinal level, too, there seem to be factors which are universal in standardisations. Grondelaers and Kristiansen (2013: 16) “suspect that the construction

of a standard language ideology (SLI) anywhere at any time requires the development of a ‘good vs. bad’ hierarchisation of varieties and a common ‘knowledge’ and acceptance of which variety is the ‘best language’”. Other hierarchies, such as between logical and illogical<sup>14</sup> or pure and impure may be universal within the European context but are historically linked to the rationalism of Enlightenment and the idea of the nation state. Stein (1994: 5) points out that “a constituent part of this ideology is the focus on written language as the paragon of language generally. This is related to the fact that most of the high functions [...] of language are carried out in the written medium.”

### Case study: relativisers in German<sup>15</sup>

One of the features that Haspelmath (2001) characterises as typically SAE features are relative pronouns, which we may read with De Vogelaer and Seiler (2012) in the literal sense as not only typically ‘European’, but also as typically ‘standard’:

The type of relative clause found in languages such as German, French or Russian seems to be unique to Standard Average European languages. It is characterized by the following four features: The relative clause is postnominal, there is an inflecting relative pronoun, this pronoun introduces the relative clause, and the relative pronoun functions as a resumptive, i.e. it signals the head’s role within the relative clause [...]. Furthermore, in most SAE languages the relative pronoun is based on an interrogative pronoun (this is true of all Romance, all Slavic and some Germanic languages, Modern Greek, as well as Hungarian and Georgian). (Haspelmath 2001: 1494)

Relative pronouns, thus, are typologically marked; they seem “to be a remarkable areal typological feature of European languages, especially the standard written languages” (Comrie 1998: 61). Relative particles,<sup>16</sup> on the other hand, are also features of several European standard languages alongside pronouns and “are also attested widely elsewhere in the world” (Haspelmath 2001: 1495). If relative pronouns have become standard variants, even though they are typologically marked and relative particles were also available, the question of why European standard languages typically have relative pronouns is a question of selection: Why were relative pronouns selected—usually at the expense of their uninflected particle alternatives—to become part of the standard? In this case study, I will focus on the standardisation of relativisers in German, which involved both relative pronouns and particles.

<sup>14</sup> “[S]tandard languages are the product of scrutinizing by generations of grammarians with regard to whether the constructions they contain are ‘logical’; hence the general aversion to, for instance, double negation” (van Marle 1997: 29).

<sup>15</sup> This case study was conducted at the same time as a related study by Luise Kempf (submitted), which was completed after this article was accepted. I would like to thank her for an inspiring discussion and for sharing a pre-print version of her paper.

<sup>16</sup> I use the terms *relative pronoun* and *relative particle* to distinguish between inflected and uninflected relativisers.

## Present and past of German relativisers

Today, the most usual relativiser, which is also one of two standard variants, is the relative pronoun *der/diēdas* (*d-*), which is phonologically and orthographically identical with the definite article in most inflected forms. It is attested as early as Old High German (750–1050) but “relatively rare in modern dialects” (Fleischer 2004: 232). A second standard variant is *welcher/welche/welches* (*welch-*), which is used rarely (in less than 1% of cases according to Sommerfeldt 1983: 162–163); it is stylistically marked as formal and unwieldy (Duden 2011). It is based on the interrogative adjective *welch-* (but is used today as a nominal rather than an adnominal relativiser). It is sometimes recommended as an alternative to *d-* where *d-* would stand next to a homonymous form of the definite article.

From amongst these relative pronouns, only *d-* is found in dialects and, despite its relative rarity, the only one ‘which is firmly rooted in spoken language’ (“die fest in der gesprochenen Sprache verankert ist”; Brooks 2006: 122). *Welch-* is attested for some Yiddish and Westphalian varieties, but Fleischer (2005: 176) assumes that this is ‘a rather artificial type’ (“einen eher künstlichen Typ”) due to contact with standard German. Von Polenz (1999: 356) characterises it as an educated written variant unfamiliar in the dialects and in colloquial language. There are a number of relative particles in the dialects which can be used on their own or in combination with *d-*, including *wo* and *was*, and also zero relatives are found in some dialects (Fleischer 2004, 2005).

Historically,<sup>17</sup> *d-* has been in use continuously since Old High German. In this first period, it was often accompanied by the relative particles *de* or *dar*; *de* could also function as a relative particle on its own. *D-* was the most frequent variant until it was met with increasing competition by *welch-* at the end of the sixteenth century (Brooks 2006: 135).

*Welch-* is thought to have originated in Dutch in the thirteenth and fourteenth centuries (Reichmann and Wegera 1993: 446) and spread first to Low German and later, in the fifteenth century, to High German (Brooks 2006: 123).<sup>18</sup> By the sixteenth century, it is associated with educated speech and academic writing (Reichmann and Wegera 1993: 446; Ebert 1986: 161; Brooks 2006: 123); its usage rises sharply toward the end of the sixteenth century (Brooks 2006: 135). According to Dal (2014: 241), *welch-* had almost supplanted *d-* in written German in the nineteenth century before being suppressed normatively (Ágel 2000: 1883) and declining in the nineteenth and twentieth centuries (von Polenz 1999: 5).

Relative particles, unknown in standard German, do not only occur in modern dialects but are also attested historically, e.g. *da*, *und* and *so*. The latter was highly frequent during the Early Modern period; it is the result of a reanalysis of comparative constructions with the relative adverbial *so*. It was still rare in Middle High

<sup>17</sup> Ebert (1986: 157–167) and Dal (2014: 236–245) provide a more comprehensive overview of historical German relativisers.

<sup>18</sup> According to Klein/Solms/Wegera (2018: 540), *welch-* was used ‘occasionally’ (“gelegentlich”) as a relative pronoun already in Middle High German (1050–1350).

German (Paul 2007: 405) and is found primarily in administrative texts of the fourteenth and fifteenth centuries before spreading to other genres in the sixteenth century (Reichmann and Wegera 1993: 447) and even appears in Dutch private correspondence in a case of language contact in the seventeenth century (van der Wal 2018). It reached its widest distribution in the sixteenth and seventeenth centuries (Dal 2014: 244) before falling into disuse in the eighteenth century (Brooks 2006: 135). It is considered a characteristic of *Kanzleisprache* ('chancery language') (Brooks 2006: 122–123; 132–133), a style of writing which originated in chanceries and was imitated widely as a supraregional prestige variety (Schwitalla 2002).

## Codification

Before turning to the analysis of usage data, I will briefly outline the codification of relativisers in German by focusing on the three most influential German grammarians: Justus Georg Schottelius (1612–1676), Johann Christoph Gottsched (1700–1766), and Johann Christoph Adelung (1732–1806). All three of them refer to the three variants *d-*, *welch-*, and *so* in their works.

In Schottelius's (1663: 534) two major works,<sup>19</sup> there is no explicit valorisation of any of the three forms. The only variant whose relative usage is described explicitly is *welch-* (1663: 730–731), but relative usage of *d-* and *so* is clearly implied (1663: 700–701). Even though Schottelius does not make any statements about which variant he thinks is preferable, he mentions *welch-* and *so* as alternatives for *d-* where it would stand next to a homonymous form of the definite article in order to avoid repetition (1663: 700–701).<sup>20</sup> Similarly, *so* is treated as an alternative for both *d-* and *welch-* (1663: 543, 735). We can therefore cautiously hypothesise that Schottelius's works may reflect a hierarchy *d-* > *welch-* > *so*, where *d-* is the least marked form and *so* the most highly marked form. Of all three variants, only *so* is treated in a subtly evaluative way:

Dieses *So* kan man zuweilen schicklich und wol anwenden/ wenn nemlich die Rede durch *welcher/welche/welches/* oder *der/die/das/* hart und unvernehmlich werden wil. (Schottelius 1663: 735)

'This *so* can sometimes be used decently and well, namely when the language would become hard and unpleasant by using *welcher, welche, welches* or *der, die, das.*' (my translation)

The implication here is clearly that *so* is usually improper and cannot be used in a decent way, unless to avoid using too many instances of *d-* and *welch-*. The fact that Schottelius stresses the cases where *so* can be used agreeably rather than the other

<sup>19</sup> Schottelius's *Teutsche Sprachkunst* (1641) and *Ausführliche Arbeit* (1663) are identical in virtually all relevant passages. I will therefore only refer to the more recent work.

<sup>20</sup> It has been shown that writers did use alternating relativisers to avoid repetition, among them Luther (e.g. Ebert 1986: 161; Brooks 2006: 123).

way around shows that attitudes against *so* in this usage must have existed at the time, to an extent that Schottelius took them for granted.

Gottsched (1748: 237) states that he views only *welch-* as a ‘proper’ relative pronoun. This assessment may be influenced by Latin and Romance relativisers, where relative pronouns are etymologically interrogative. He concedes, though, that *d-* can be counted among relative pronouns as well because it can be used interchangeably with *welch-* (1748: 238). He calls upon the model of ‘good writers’ (“gute Schriftsteller”), who alternate between *welch-* and *d-* depending on the requirements of ‘euphony’ (“Wohlklang”). In particular, he recommends *welch-* as a means of avoiding repetition when using *d-*. Gottsched goes on to say that *so*, which he views, like Schottelius, as an alternative to *welch-* or *d-* (1748: 366), is also used ‘very frequently’ (“sehr häufig”) and poses the question of ‘what should be thought of this?’ (“was davon zu halten sey?”, 1748: 238). Again, this is a passage that tells us that there must have been some underlying, implicit yet pervasive attitudes toward this form. Gottsched concludes that there is nothing wrong with *so* in principle; but since *so* is a highly frequent word, with a large range of different functions, it should be avoided ‘as far as possible’ (“so viel man kann”, 1748: 239) and used only where the gender of the antecedent is unclear or where it refers to several antecedents with mixed genders. Overall, Gottsched’s hierarchy of relativisers appears as *welch-* > *d-* > *so*, in which *d-* and *welch-* have swapped places compared to Schottelius, with a more explicit condemnation of *so*.

Like Gottsched, Adelung (1782: 711) gives an explicit endorsement of *welch-*, calling it ‘the most complete relativiser’ (“das vollständigste Relativum”), and also provides a stylistic assessment in saying that it is used most frequently ‘in solemn speech’ (“in der feyerlichen Rede”), whereas *d-* is used in ‘the private/familiar way of writing’ (“der vertraulichen Schreibart”). Like *d-*, which according to Adelung (1782: 711) is used ‘in ordinary life’ (“im gemeinen Leben”), *so* is ‘passable’ (“gangbar”) in ‘ordinary ways of speaking and writing’ (“den gemeinen Schreib- und Spracharten”; 1782: 713). This is not only a clear placement in terms of register, but also again a formulation which informs us *ex negativo* that *so* was not ‘passable’ in other domains. Adelung (1782: 713) expresses this sentiment more explicitly: in ‘more decent’ (“anständigern”) ways of speaking/writing, it is usually avoided as far as possible, except to avoid repetition of the other relativisers. Adelung thus also has a clear hierarchy, which is the same as Gottsched’s hierarchy, but this time with a clearer stylistic allocation to registers.

In the works of these three grammarians, we find a development of increasing explicitness as regards the acceptability of the individual forms and their stylistic assessment. The variant *so* becomes more overtly stigmatised (in the sense of Davies and Langer 2006: 75–76) and *welch-* receives an increasingly evaluative endorsement.<sup>21</sup> The criteria for both the condemnation of *so* and the endorsement of

<sup>21</sup> It is interesting to see that *so* continued to appear in grammars well into the nineteenth century (e.g. Heyse 1859: 543) even though it had been obsolete for almost a century; it was, however, flagged as dated.

*welch-* are implicit in the case of Schottelius, structural in the case of Gottsched, and stylistic in the case of Adelung.

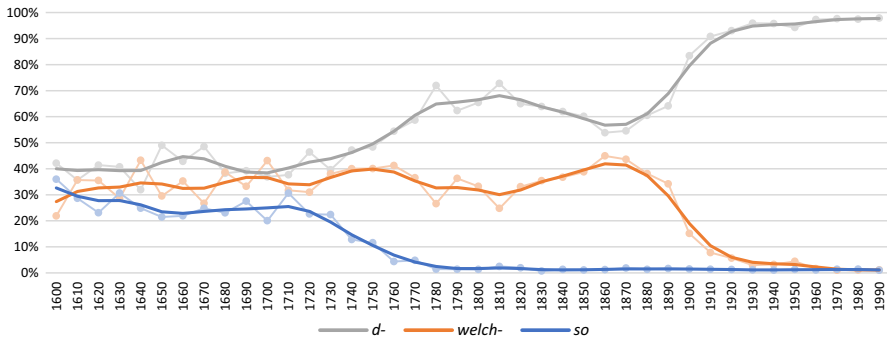
## Data and analysis

In order to assess the usage of the three variants diachronically, I carried out a combined corpus search in the DWDS reference corpora ([www.dwds.de](http://www.dwds.de)) comprising texts of the *Deutsches Textarchiv* (DTA, [www.deutschestextarchiv.de](http://www.deutschestextarchiv.de)) and the *Digitales Wörterbuch der Deutschen Sprache* (DWDS) from 1600 to 1999. This corpus currently comprises 3822 works from the four domains of Fiction, Functional Texts, Academic Writing, and Newspapers, but is not balanced with respect to region.

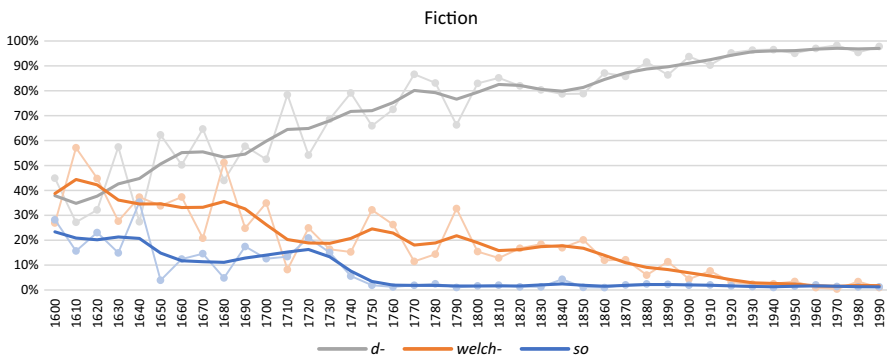
The search for the three variants proved difficult because the corpus is not tagged for relative particles (*so* is tagged as an adverb). *D-* and *welch-*, however, appear as relative pronouns. The relative particle *so* therefore had to be identified through its distribution. As German relative clauses are verb-final, word order was taken into account in order to capture relative clauses opened by *so*. A search for cases where *so* appears after a comma or virgule (in order to target clause-initial cases) and is not followed by a verb (in order to exclude non-subordinate clauses) yields a high proportion of relative clauses but is far from being specific enough: the results still contain many cases of adverbial clauses beginning with *so bald* or *so wohl* (in which *so* modifies an adverb, *bald* or *wohl*; both examples would today appear as one word). A further problem is that conditional clauses with *so* ('if') cannot be ruled out this way. I therefore decided to restrict the search to cases where *so* is followed by a preposition: this theoretically still includes some conditional clauses but due to word order regularities the probability is much lower. The results, therefore, only represent a fraction of all relative usages of *so*, but the risk of false positives is considerably smaller.<sup>22</sup> In order to achieve optimal comparability, *d-* and *welch-* were searched with the same restrictions that were used for *so*, albeit using the tag for relative pronouns. A search for *d-* and *welch-* using only distributional criteria for test purposes yielded practically identical results.

Our time window begins at a time when all three variants have rather stable relative frequencies for a century (Figure 1). The situation begins to change dramatically in the first half of the eighteenth century, when *so* starts to drop until it is virtually non-existent by 1780. Subsequently, *d-* and *welch-* compete for dominance with more than one turning point, until *d-* wins out at the beginning of the twentieth century and *welch-* becomes a niche form. Its percentages close to zero especially after 1960 are all the more remarkable as it is to this day a standard variant, which points to a discrepancy between implicit and explicit selection: implicitly, *welch-* was practically de-selected in the nineteenth century, but explicit selection (i.e. codification) has not followed suit (yet).

<sup>22</sup> A check of randomly chosen hits showed that the hits include almost exclusively relative cases of *so*, and the fact that after *so* becomes obsolete the numbers are close to zero further attest that the search query is sufficiently specific.



**Figure 1** Relative frequencies in the DTA corpus and DWDS core corpus ( $N=492,601$ ). [The light connected dots represent the actual hits in the corpus; the solid lines are trendlines obtained by applying smoothing to the raw data to compensate for statistical fluctuations. The method used is temporal density estimation (Blaxter 2017: 106–107; Pickl forthcoming a, b)]



**Figure 2** Relative frequencies in the Fiction subcorpus

In order to be able to assess register differences and the role of stylistic factors, we will now consider the results separately by domain (Figures 2, 3, 4 and 5).

Across the subcorpora, the demise of *so* begins c. 1700. Newspapers and Academic Writing generally have the highest percentages for *so*, Fiction the lowest. The loss of *so* is also fastest in Fiction. This clearly indicates the status of *so* as a written, formal variant, which was preferred in more formal registers. The development of *d-* and *welch-* shows some remarkable differences especially between Fiction and the remaining subcorpora, but also between Newspapers and the rest. In Fiction, there is a very steady increase of *d-* from the beginning until it almost reaches 100% towards the end of our time period while *welch-* performs a complementary movement. The other domains exhibit a more or less pronounced ‘struggle’ between *d-* and *welch-* with peaks for *welch-* in the first half of the seventeenth and the second half of the eighteenth century. *D-* is initially clearly preferred in Functional Texts and peaks remarkably around 1800 in Functional Texts and Academic Writing, with

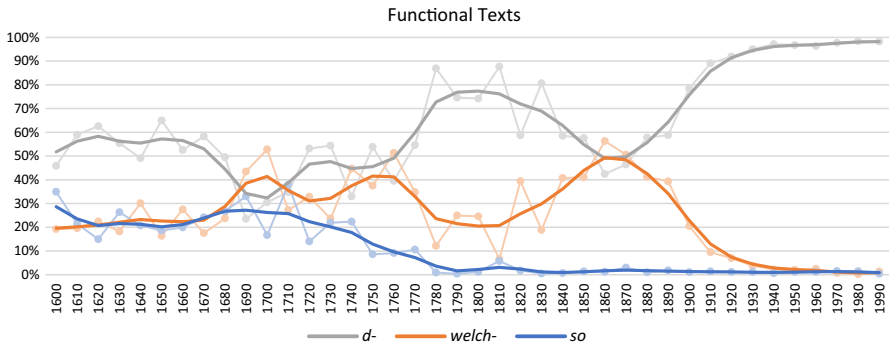


Figure 3 Relative frequencies in the Functional Texts subcorpus

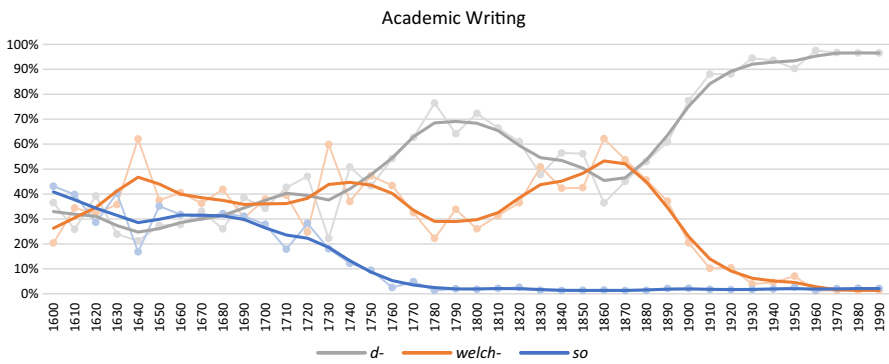


Figure 4 Relative frequencies in the Academic Writing subcorpus

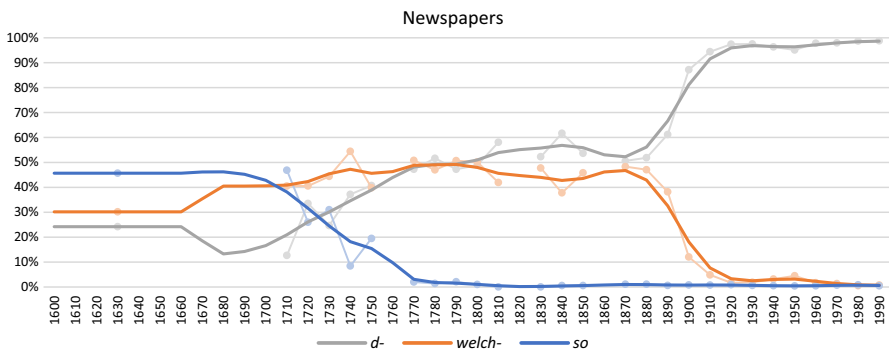


Figure 5 Figure 1: Relative frequencies in the Newspapers subcorpus. (In contrast to the other domains, the newspaper subcorpus contains some larger gaps, especially in the seventeenth century. Temporal density estimation can, to an extent, compensate for these gaps, but the trendlines are of course conjectural. The general trends visible seem to be plausible in the context of the results from the other subcorpora)



Newspapers showing a much less pronounced and somewhat delayed peak around 1840. The final decision for *d-* as the uncontested default variant happens shortly after 1900 and most quickly in the Newspapers subcorpus. In contrast to previous accounts, we see a lively development in all subcorpora apart from Fiction, and there is no indication that *welch-* had almost ousted *d-* in the nineteenth century, as previously claimed, in any of the four domains: only in Academic Writing there is a very short period where *welch-* is slightly more frequent than *d-*.

## Discussion

It is tempting to look for explanations for these movements in prescriptive comments. It has been suggested, for instance, that Gottsched's (1748) recommendation to avoid *so* has led to its demise (Jakob 1999: 36). The decrease of *so*, however, started much earlier (Brooks 2006: 135), so Gottsched might at best have contributed to it. It appears that the distaste of *so* which is palpable in Schottelius's (1641; 1663) comments was real and soon manifested itself in a lasting drop. If Gottsched's comments did have an effect, we must look for it in the decades following the publication of his *Grundlegung*. The time between 1750 and 1800 saw an extraordinary rise in the use of *d-*, which could be seen as contradicting Gottsched's more explicit endorsement of *welch-*, but his invocation of the example of 'good writers' might have led to a tendency towards imitating literary style—the percentages around 1800 in Functional Texts and Academic Writing are very close to those in Fiction. This trend was, however, reversed after 1800, leading to a new rise of *welch-*, which peaked c. 1870. It does not seem far-fetched to look for an explanation for this in Adelung's (1782) stylistic appraisal of *welch-* given that his *Umständliches Lehrgebäude* was highly influential. Grammars continued Gottsched and Adelung's tradition of listing *welch-* first and *d-* second (which is criticised by Wustmann 1891: 147) at least until the late nineteenth century, e.g. in later editions of Heyse (1859), which may also reflect an aspiration to make the unfamiliar *welch-* palatable to pupils (Schieb 1994: 377).<sup>23</sup> The first grammars to place *d-* before *welch-* were those that explicitly referred to Grimm's (1819–1837) historical-comparative *Deutsche Grammatik* as a model, which describes *d-*-type relativisers as characteristic of German and Germanic languages (Grimm 1819–1837, vol. 3: 195), such as Rinne (1836: 184) or Kehrein (1852: 95).<sup>24</sup> The latter points out 'that *der, die, das* is our oldest relative pronoun' ('daß *der, die, das* unser ältestes Relativpronomen ist'; 1852: 99). The first school grammars that listed *d-* before *welch-* appear to be from the 1860s (e.g. Jänicke 1863: 65; Koch 1868: 59)—the decade when *welch-* came closest to overtaking *d-* in usage and the tide was starting to turn. Towards the end of the nineteenth century, *welch-* became a controversial subject of language

<sup>23</sup> Language critic Wustmann (1891: 147) observes pointedly that *welch-* is the only variant which is taught in schools.

<sup>24</sup> Schieb (1994: 369–370; 377) critically outlines the effect of Grimm's historical approach on codification more generally, which was perceived as a restoration of written German to its spoken basis by contemporaries.

criticism (von Polenz 1999: 356). The final and decisive turn toward *d-* has been attributed to its normative and stylistic condemnation (Ágel 2000: 1883, 2010: 213; Dal 2014: 241). The trend reversal around 1870, however, seems to precede the first commentators to explicitly condemn *welch-* as part of a more general polemical onslaught on ‘paper style/language’ from c. 1890 onwards (e.g. Schroeder 1889; Wustmann 1891),<sup>25</sup> which makes it more likely that they picked up on—and probably boosted—a new trend that was already underway rather than causing it.

Rather than attributing the loss of *so* to the grammarians, Ágel (2010) argues that the loss of *so* was due to structural reasons: as an uninflected and ‘aggregative’ particle, it conflicted with the ideal of grammatical clarity in written standard language. This can be seen as an example for the tendency of (European) standard languages to favour relative pronouns over relative particles in order to increase syntactic transparency, which is a candidate for a standard universal, at least in the European context. A contributing aspect, according to Ágel, was the restricted functional range of *so*: it could only replace relative pronouns in subject or object functions,<sup>26</sup> which led to a structural ‘skew’ that, overall, favoured the more flexible relative pronouns. This, too, could be seen in the context of the (perceived) lack of structural ‘adequacy’ of a linguistic item for a written standard language. Ágel also mentions the role of contemporary negative attitudes towards *so*.

A further, crucial factor appears to lie in the stylistic ‘affiliation’ of *so*: it was clearly a feature of *Kanzleisprache*, and with the declining prestige of the chanceries in the eighteenth century (Brooks 2006: 133), this stylistic variety and the features associated with it fell out of ‘fashion’ as well. With *Kanzleisprache* becoming obsolete in the eighteenth century (Lange 2008: 188–189), a number of stylistic features suffer the same fate (Brooks 2006: 134), which exemplifies the gradual range between micro- and macro-selection which we have dubbed ‘meso-selection’. With *Kanzleisprache* being avoided for attitudinal reasons (Brooks 2001; Schwitalla 2002), an entire stylistic complex of variation is implicitly but effectively de-selected. This is all the more remarkable since *Kanzleisprache* had ticked most of the boxes which would have seemed to make it an ideal candidate to be selected for the future standard: it was a high-prestige, supraregional, formal, written variety, but as its prestige diminished, the rest of these factors appear to have become less relevant, and the stylistic tastes in Enlightenment fostered different linguistic preferences (Brooks 2001, 2006: 135), which might be linked to the rise of the ‘educated’ variant *welch-* and the more neutral *d-* as written language became ‘less written’ and closer to spoken German after the heyday of *Kanzleisprache* (Brooks 2006: 134).

For the de-selection of *so*, several intricately interwoven factors seem to have been at play: there was a prescriptivist negative attitude towards *so*, based largely on aesthetic judgements, which was partly reflected, partly fuelled by the grammarians; connected with this attitude was a structural factor, put forward in the grammars,

<sup>25</sup> See Schieb (1994: 377–389) for a discussion of the debate around *d-* and *welch-* in the late nineteenth century.

<sup>26</sup> Further restrictions made *so* incompatible with prepositions and largely limited it to restrictive relative clauses immediately following their head noun (Reichmann and Wegera 1993: 447).

which concerned the functional overload of homonymous forms; a further structural factor, apparently not reflected by the grammarians, made *so* functionally ill-suited as a syntactically transparent and versatile relativiser in a written norm; and finally, the stylistic distribution of *so* condemned it to go down with the ship as the attitudes toward the stylistic variety it was associated with changed and it was de-selected.

Like *so*, *welch-* is a polarised variant (Pickl forthcoming a) associated with writing with little foothold in spoken language. It lacked, however, the stylistic stigma of *Kanzleisprache* and was a structurally fit candidate in the ongoing selection. The rise of *d-* may have been related to its use in literary language (and thus distributional and attitudinal), perhaps sparked by Gottsched's comments. The idea that *welch-* was a more proper relative pronoun than *d-*, however, expressed by Gottsched and Adelung, is a structurally conditioned attitude which may have led to its rise in subsequent years. It was complemented by a tendency to favour the more formal registers in prescription (Milroy and Milroy 2012: 30), which is palpable in Adelung's stylistic comments. The availability of a relative pronoun, however, which was closer to spoken language, *d-*, proved a threat to *welch-*, a written, 'artificial' (Fleischer 2005) variant that was never rooted in spoken language (Brooks 2006). Moreover, Gottsched and Adelung's idea that *welch-*, being as an interrogative and hence 'Latin-type' relative pronoun, was a more rightful relative pronoun than *d-* might have lost its persuasiveness after the end of German classicism, also given the influence of Grimm's historically oriented grammar. The final blow for *welch-* came in the twentieth century, when its association with 'paper language' made it stand out as unwieldy—the fact that it is longer may have contributed to this impression—and the stylistically neutral and more 'natural'<sup>27</sup> *d-* took the lead for good and practically obliterated its rival.

The genre differences show a clear common pattern in Functional and Academic Writing, and to some extent in Newspapers, which Fiction was practically unaffected by. This demonstrates the relevance of the stylistic evaluation of the forms in question: *d-* was clearly perceived as an aesthetically agreeable variant, while the increasing avoidance of *welch-* in Fiction shows how it became more and more marked.<sup>28</sup> The 'oscillation' in the other domains between *welch-* and *d-* shows how written usage wavered between a norm rather detached from spoken usage, characterised by distinctly written forms, and a norm that was more firmly grounded in spoken language and stylistically more neutral (cf. Footnote 24).

<sup>27</sup> Even though *d-* seems to have emerged naturally and has always been a spoken variant, as a relative pronoun it is typologically marked, and many German dialects prefer relative particles instead (Fleischer 2004, 2005).

<sup>28</sup> The gradual trend away from a 'written' feature is reminiscent of the gradual convergence of spoken and written German between 1400 and 2000 put forward by Weiß (2005).

## Conclusion

Which variants or varieties are selected in standardisation is not a question of identifying a single cause, but a trade-off between several factors. These factors can be universal across standardisation histories or historically contingent, and they can stand in relation either to the linguistic form or distribution of the candidates in question. Also, attitudes based on either form or distribution have an often decisive effect on which candidate prevails. Register variation plays a crucial role in selection alongside geographical and social variation, especially in terms of written and formal language. Future studies may attempt to establish relative weights of importance between these (types of) factors. Because some factors appear to be (relatively) general, standard languages tend to develop similar linguistic structures, which were called ‘standard universals’ in analogy to Chambers’ ‘vernacular universals’. One of these features, at least in the European context, is the existence of relative pronouns instead of or in addition to relative particles. This can be traced to a universal factor of grammatical explicitness and unambiguity.

The case study focused on the standardisation of relativisers in German, which is an ideal example for the application of several of the concepts laid out in the first half of the paper. Its outcome was the result of a combination of several factors concerning the linguistic structure, the distribution across registers, and the evaluation of the three selection candidates by the speech community and agents of codification. Because *so* and *welch-* were de-selected as parts of larger stylistic complexes, this example also shows that register variation beyond the categories of formal and written has to be taken into account alongside social and geographical variation. At the same time, it exemplifies how universal factors of selection can lead to similar structures in several standard languages.

**Acknowledgements** This work was supported by the Alexander von Humboldt Foundation and the Isaac Newton Trust. I would like to thank the two anonymous reviewers and the editors of the special issue. I am indebted to Luise Kempf (Mainz) for a stimulating and inspiring exchange regarding many aspects of the case study.

**Open Access** This article is distributed under the terms of the Creative Commons Attribution 4.0 International License (<http://creativecommons.org/licenses/by/4.0/>), which permits unrestricted use, distribution, and reproduction in any medium, provided you give appropriate credit to the original author(s) and the source, provide a link to the Creative Commons license, and indicate if changes were made.

## References

- Adelung, J. C. (1782). *Umständliches Lehrgebäude der Deutschen Sprache [...]*. Leipzig: Breitkopf.
- Ágel, V. (2000). Syntax des Neuhochdeutschen bis zur Mitte des 20. Jahrhunderts. In W. Besch, A. Betten, O. Reichmann, & S. Sonderegger (Eds.), *Sprachgeschichte. Ein Handbuch zur Geschichte der deutschen Sprache und ihrer Erforschung* (pp. 1855–1903). Berlin: De Gruyter.
- Ágel, V. (2010). ±Wandel. Am Beispiel der Relativpartikeln *so* und *wo*. In D. Bittner & L. Gaeta (Eds.), *Kodierungstechniken im Wandel. Das Zusammenspiel von Analytik und Synthese im Gegenwartsdeutschen* (pp. 199–222). Berlin/New York: De Gruyter.

- Anderwald, L. (2016). *Language between description and prescription. Verbs and verb categories in nineteenth-century grammars of English*. Oxford: Oxford University Press.
- Auer, A. (2009a). *The subjunctive in the age of prescriptivism. English and German developments during the eighteenth century*. Basingstoke: Palgrave Macmillan.
- Auer, P. (2009b). On-line syntax. Thoughts on the temporality of spoken language. *Language Sciences*, 31, 1–13.
- Bartsch, R. (1987). *Sprachnormen. Theorie und Praxis*. Tübingen: Niemeyer.
- Berruto, G. (2010). Identifying dimensions of linguistic variation in a language space. In P. Auer & J. E. Schmidt (Eds.), *Language and space. An international handbook of linguistic variation. Theories and methods* (Vol. 1, pp. 226–241). Berlin: De Gruyter.
- Besch, W. (1967). *Sprachlandschaften und Sprachausgleich im 15 Jahrhundert*. München: Francke.
- Besch, W. (2003). Die Entstehung und Ausformung der neuhochdeutschen Schriftsprache/Standardsprache. In W. Besch, A. Betten, O. Reichmann, & S. Sonderegger (Eds.), *Sprachgeschichte. Ein Handbuch zur Geschichte der deutschen Sprache und ihrer Erforschung. 3. Teilband* (pp. 2252–2296). Berlin: De Gruyter.
- Betten, A. (1987). *Grundzüge der Prosasyntax. Stilprägende Entwicklungen vom Althochdeutschen zum Neuhochdeutschen*. Tübingen: Niemeyer.
- Blaxter, T. (2017). *Speech in space and time. Contact, change and diffusion in medieval Norway*. Doctoral thesis, University of Cambridge.
- Brooks, T. (2001). Vom Vorreiter zum Nachzügler. Überlegungen zum Prestigeverlust der Kanzleisprache am Übergang vom 17. zum 18. Jahrhundert. In A. Schwarz & L. Abplanalp Luscher (Eds.), *Textallianzen. Am Schnittpunkt der germanistischen Disziplinen* (pp. 291–302). Bern: Lang.
- Brooks, T. (2006). *Untersuchungen zur Syntax in oberdeutschen Drucken des 16.–18. Jahrhunderts*. Frankfurt a.M. etc: Lang.
- Chambers, J. K. (2004). Dynamic typology and vernacular universals. In Bernd Kortmann (Ed.), *Dialectology meets typology. Dialect grammar from a cross-linguistic perspective* (pp. 127–145). Berlin: De Gruyter.
- Cheshire, J., & Stein, D. (Eds.). (1997). *Taming the vernacular. From dialect to written standard language*. London: Longman.
- Comrie, B. (1998). Rethinking the typology of relative clauses. *Language Design*, 1, 59–86.
- Dahl, Ö. (1990). Standard Average European languages as an exotic language. In J. Bechert, G. Bernini, & C. Buridant (Eds.), *Toward a typology of European languages* (pp. 3–8). Berlin: Mouton de Gruyter.
- Dal, I. (2014). *Kurze deutsche Syntax auf historischer Grundlage*. Berlin: De Gruyter.
- Davies, W. V., & Langer, N. (2006). *The making of bad language. Lay linguistic stigmatisations in German: Past and present*. Frankfurt a.M. et al: Lang.
- De Vogelaer, G., & Seiler, G. (2012). The dialect laboratory: Introductory remarks. In G. De Vogelaer & G. Seiler (Eds.), *The dialect laboratory. Dialects as a testing ground for theories of language change* (pp. 1–31). Amsterdam: Benjamins.
- Deumert, A., & Vandenbussche, W. (2003). Standard languages: Taxonomies and histories. In A. Deumert & W. Vandenbussche (Eds.), *Germanic standardizations. Past to present* (pp. 1–14). Amsterdam/Philadelphia: Benjamins.
- Duden, (2011). *Richtiges und gutes Deutsch. Das Wörterbuch der sprachlichen Zweifelsfälle. Band 9*. Mannheim/Zurich: Dudenverlag.
- Ebert, R. P. (1986). *Historische Syntax des Deutschen II: 1300–1750*. Bern et al.: Lang.
- Eisenberg, P. (1995). Grammatik der geschriebenen Sprache als Symbolgrammatik. Ein Versuch an ausgewählten Themen der Morphologie. In V. Ágel & R. Brdar-Szabó (Eds.), *Grammatik und deutsche Grammatiken* (pp. 23–38). Tübingen: Niemeyer.
- Elspaß, S. (2005). *Sprachgeschichte von unten. Untersuchungen zum geschriebenen Alltagsdeutsch im 19. Jahrhundert*. Tübingen: Niemeyer.
- Elspaß, S., Langer, N., Scharloth, J., & Vandenbussche, W. (Eds.). (2007). *Germanic language histories 'from below' (1700–2000)*. Berlin: De Gruyter.
- Filppula, M., Klemola, J., & Paulasto, H. (Eds.). (2009a). *Vernacular universals and language contacts. Evidence from varieties of English and beyond*. New York: Routledge.
- Filppula, M., Klemola, J., & Paulasto, H. (Eds.). (2009b). Vernacular universals and language contacts: An overview. In *Vernacular universals and language contacts. Evidence from varieties of English and beyond* (pp. 1–16). New York: Routledge.

- Fleischer, J. (2004). A typology of relative clauses in German dialects. In B. Kortmann (Ed.), *Dialectology meets typology. Dialect grammar from a cross-linguistic perspective* (pp. 211–243). Berlin: De Gruyter.
- Fleischer, J. (2005). Relativsätze in den Dialekten des Deutschen: Vergleich und Typologie. *Linguistik online*, 24(3), 171–186.
- Givón, T. (1979). *On understanding grammar*. New York et al.: Academic Press.
- Glaser, E. (2003). Zu Entstehung und Charakter der neuhochdeutschen Schriftsprache: Theorie und Empirie. In R. Berthele, H. Christen, S. Germann, & I. Hove (Eds.), *Die deutsche Schriftsprache und die Regionen. Entstehungsgeschichtliche Fragen in neuer Sicht* (pp. 57–78). Berlin: De Gruyter.
- Gottsched, J. C. (1748). *Grundlegung einer Deutschen Sprachkunst [...]*. Leipzig: Breitkopf.
- Grimm, J. (1819–1837). *Deutsche Grammatik*. Göttingen: Dietrich.
- Grondelaers, S., & Kristiansen, T. (2013). On the need to access deep evaluations when searching for the motor of standard language change. In T. Kristiansen & S. Grondelaers (Eds.), *Language (de)standardisation in late modern Europe: Experimental studies* (pp. 9–52). Oslo: Novus.
- Guy, G. R., & Hinskens, F. (2016). Linguistic coherence: Systems, repertoires and speech communities. *Lingua*, 172(173), 1–9.
- Haspelmath, M. (2001). The European linguistic area: Standard Average European. In M. Haspelmath, E. König, W. Oesterreicher, & W. Raible (Eds.), *Language typology and language universals* (pp. 1492–1510). Berlin: De Gruyter.
- Haugen, E. (1966). Dialect, nation, language. *American Anthropologist*, 68(4), 922–935.
- Haugen, E. (1972 [1968]). The Scandinavian languages as cultural artefacts. In E. S. Firschow, K. Grimstad, N. Hasselmo & W. A. O'Neil (Eds.), *Studies by Einar Haugen. Presented on the occasion of his 65th birthday, April 19, 1971* (pp. 564–579). The Hague/Paris: Mouton.
- Haugen, E. (1982). The implementation of corpus planning: Theory and practice. In J. Cobarrubias & J. A. Fishman (Eds.), *Progress in language planning: International perspectives* (pp. 269–289). Berlin: De Gruyter.
- Havinga, A. D. (2018). *Invisibilising Austrian German. On the effect of linguistic prescriptions and educational reforms on writing practices in 18th-century Austria*. Berlin: De Gruyter.
- Heyse, J. C. A. (1859). *Deutsche Schulgrammatik oder kurzgefasstes Lehrbuch der deutschen Sprache, mit Beispielen und Übungsaufgaben*. Hannover: Hahn.
- Irvine, J. T., & Gal, S. (2000). Language Ideology and linguistic differentiation. In P. V. Kroskity (Ed.), *Regimes of language: Ideologies, politics, and identities* (pp. 35–84). Santa Fe: School of American Research Press.
- Jakob, K. (1999). Die Sprachnormierungen Johann Christoph Gottscheds und ihre Durchsetzung in der zweiten Hälfte des 18. Jahrhunderts. *Sprachwissenschaft*, 24, 1–46.
- Jänicke, O. (1863). *Deutsche Rechtschreibung und Formenlehre für die unteren und mittlen Klassen gelehrter Schulen*. Brandenburg: Wiesike.
- Jones, M. C. (1998). *Language obsolescence and revitalization. Linguistic change in two sociolinguistically contrasting Welsh communities*. Oxford: Clarendon.
- Kehrein, J. (1852). *Grammatik der neuhochdeutschen Sprache nach Jacob Grimms deutscher Grammatik*. Leipzig: Wigand.
- Kempf, L. (submitted). German *so*-relatives: Lost in grammatical, typological, and sociolinguistic change.
- Klein, T., Solms, H.-J., & Wegera, K.-P. (2018). *Mittelhochdeutsche Grammatik. Teil II: Flexionsmorphologie. Band 1: Substantive, Adjektive, Pronomina*. Berlin: De Gruyter.
- Koch, C. F. (1868). *Deutsche Elementargrammatik für höhere Lehranstalten, Gymnasien, Lyceen und Realschulen*. Jena: Mauke.
- Koch, P., & Oesterreicher, W. (1994). Schriftlichkeit und Sprache. In H. Günther & O. Ludwig (Eds.), *Schrift und Schriftlichkeit. Ein interdisziplinäres Handbuch internationaler Forschung* (Vol. 1, pp. 587–604). Berlin: De Gruyter.
- Koch, P., & Oesterreicher, W. (2012). Language of immediacy—language of distance: Orality and literacy from the perspective of language theory and linguistic history. In C. Lange, B. Weber, & G. Wolf (Eds.), *Communicative spaces. Variation, contact, and change. Papers in honour of Ursula Schaefer* (pp. 441–473). Frankfurt a.M.: Lang.
- Lange, M. B. (2008). *Sprachnormen im Spannungsfeld schriftsprachlicher Theorie und Praxis. Die Protokolle der Commerzdeputation Hamburg im 17. Jahrhundert*. Berlin: De Gruyter.
- Langer, N. (2001). *Linguistic purism in action. How auxiliary *tun* was stigmatized in Early New High German*. Berlin/New York: De Gruyter.

- Langer, N., & Davies, W. V. (Eds.). (2005). *Linguistic purism in the Germanic languages*. Berlin: De Gruyter.
- Mattheier, K. J. (1981). Wege und Umwege zur neuhochdeutschen Schriftsprache. Überlegungen zur Entstehung und Durchsetzung der neuhochdeutschen Schriftsprache unter dem Einfluß sich wandelnder Sprachwertssysteme, veranschaulicht am Beispiel von Köln. *Zeitschrift für Germanistische Linguistik*, 9(3), 274–307.
- Mattheier, K. J. (2003). German. In A. Deumert & W. Vandenbussche (Eds.), *Germanic standardizations. Past to present* (pp. 211–244). Benjamins: Amsterdam.
- Milroy, J., & Milroy, L. (2012). *Authority in language. Investigating Standard English*. London/New York: Routledge.
- Paul, H. (2007). *Mittelhochdeutsche Grammatik*. Tübingen: Niemeyer.
- Pickl, S. (forthcoming a). Polarisation and the emergence of a written marker. A diachronic corpus study of the adnominal genitive in German. *Journal of Germanic Linguistics*.
- Pickl, S. (forthcoming b). Wandel und Variation der Genitivstellung in einem diachronen Predigten-Korpus. Eine epochenübergreifende Längsschnitt-Studie. In L. Dücker, S. Hartmann, & R. Szczeplaniak (Eds.), *Historische Korpuslinguistik*. Berlin/Boston: De Gruyter.
- Reichmann, O., & Wegera, P. (Eds.). (1993). *Frühneuhochdeutsche Grammatik von Robert Peter Ebert, Oskar Reichmann, Hans-Joachim Solms und Klaus-Peter Wegera*. Tübingen: Niemeyer.
- Rinne, J. K. F. (1836). *Die deutsche Grammatik nach den Grundsätzen der historischen oder vergleichenden Grammatik im Auszuge aus Grimm's deutscher und Bopp's vergleichender Grammatik*. Stuttgart: Balz.
- Schieb, G. (1994 [1981]). Zu Stand und Wirkungsbereich der kodifizierten grammatischen Norm Ende des 19. Jahrhunderts. In Schieb, G., *Ausgewählte Schriften zur deutschen und niederländischen Sprach- und Literaturgeschichte. Gedenkschrift zu ihrem 75. Geburtstag herausgegeben von Rudolf Betzinger/Jochen Splett* (pp. 331–394). Göppingen: Kümmerle.
- Schottelius, J. G. (1641). *Teutsche Sprachkunst [...]*. Gruber: Braunschweig.
- Schottelius, J. G. (1663). *Ausführliche Arbeit von der Teutschen HauptSprache [...]*. Zillinger: Braunschweig.
- Schroeder, O. (1889). *Vom papiernen Stil*. Berlin: Walther.
- Schwitalla, J. (2002). Komplexe Kanzleisyntax als sozialer Stil. Aufstieg und Fall eines sprachlichen Imponierhabitus. In I. Keim & W. Schütte (Eds.), *Soziale Welten und kommunikative Stile. Festschrift für Werner Kallmayer zum 60. Geburtstag* (pp. 379–398). Tübingen: Narr.
- Seiler, G. (2019). Non-Standard Average European. In A. Nievergelt & L. Rübkeil (Eds.), *,athe in palice, athe in anderu sumeuuelicheru stedi'. Raum und Sprache. Festschrift für Elvira Glaser zum 65. pp. 541–554*. Heidelberg: Winter.
- Silverstein, M. (1979). Language structure and language ideology. In P. R. Clyne, W. F. Hanks, & C. L. Hofbauer (Eds.), *The elements: A parasession on linguistic units and levels* (pp. 193–247). Chicago: Chicago Linguistic Society.
- Sommerfeldt, K.-E. (1983). Entwicklungstendenzen im Gebrauch der deutschen Satzformen im 19. und 20. Jahrhundert. In D. Nerius (Ed.), *Entwicklungstendenzen der deutschen Sprache seit dem 18. Jahrhundert* (pp. 158–167). Berlin: Akademie.
- Sondererger, S. (1979). *Grundzüge deutscher Sprachgeschichte. Diachronie des Sprachsystems. Band I: Einführung – Genealogie – Konstanten*. Berlin/New York: De Gruyter.
- Stein, D. (1994). Sorting out the variants: Standardization and social factors in the English language 1600–1800. In D. Stein & I. Tiekens-Boon van Ostade (Eds.), *Towards a Standard English 1600–1800* (pp. 1–17). Berlin: De Gruyter.
- Stein, D. (1997). Syntax and varieties. In J. Cheshire & D. Stein (Eds.), *Taming the vernacular. From dialect to written standard language* (pp. 35–50). London: Longman.
- Stewart, W. A. (1968). A sociolinguistic typology for describing national multilingualism. In J. A. Fishman (Ed.), *Readings in the sociology of language* (pp. 530–545). Den Haag/Paris: Mouton.
- Trudgill, P. (2009). Vernacular universals and the sociolinguistic typology of English dialects. In M. Filpula, J. Klemola, & H. Paulasto (Eds.), *Vernacular universals and language contacts. Evidence from varieties of English and beyond* (pp. 304–322). New York: Routledge.
- van der Wal, M. (2007). Eighteenth-century linguistic variation from the perspective of a Dutch diary and a collection of private letters. In S. Elspaß, N. Langer, J. Scharloth, & W. Vandenbussche (Eds.), *Germanic language histories: 'from below' (1700–2000)* (pp. 83–98). Berlin/New York: De Gruyter.
- van der Wal, M. (2018). Early Modern migrants in a language contact setting: Characteristics of the Dutch Heusch correspondence (1664–1665). *Journal of Historical Sociolinguistics*, 4(2), 253–280.

- van Marle, J. (1997). Dialect versus standard language: nature versus culture. In J. Cheshire & D. Stein (Eds.), *Taming the vernacular. From dialect to written standard language* (pp. 13–34). London: Longman.
- von Polenz, P. (1999). *Deutsche Sprachgeschichte vom Spätmittelalter bis zur Gegenwart. Band III: 19. und 20. Jahrhundert*. Berlin/New York: De Gruyter.
- Weiß, Helmut. (2004). A question of relevance. Some remarks on standard languages. *Studies in Language*, 28(3), 648–674.
- Weiß, Helmut. (2005). The double competence hypothesis. On diachronic evidence. In S. Kesper & M. Reis (Eds.), *Linguistic evidence. Empirical, theoretical, and computational perspectives* (pp. 557–575). Berlin: De Gruyter.
- Whorf, B. L. (1941). The relation of habitual thought and behavior to language. In L. Spier (Ed.), *Language, culture, and personality: Essays in memory of Edward Sapir* (pp. 75–93). Menasha, WI: Sapir Memorial Publication Fund.
- Wustmann, G. (1891). *Allerhand Sprachdummheiten. Kleine deutsche Grammatik des Zweifelhafthen, des Falschen und des Häßlichen*. Leipzig: Grunow.

**Publisher's Note** Springer Nature remains neutral with regard to jurisdictional claims in published maps and institutional affiliations.

**Simon Pickl** is Assistant Professor for German Linguistics at the University of Salzburg and Affiliated Lecturer for German at the University of Cambridge. He obtained his Ph.D. from the University of Augsburg with a thesis on quantitative methods in dialectology. Currently he is pursuing a research project on syntactic and stylistic change in the history of German as Feodor Lynen Research Fellow / Isaac Newton Trust Fellow at the University of Cambridge. He is Review Editor of the *Journal of Historical Sociolinguistics* (De Gruyter) and has published on German dialectology and historical linguistics. His research focuses on various aspects of German language history, language variation and language change.