



THE AGA KHAN UNIVERSITY

eCommons@AKU

Department of Paediatrics and Child Health

Division of Woman and Child Health

4-1-2020

Global burden of respiratory infections associated with seasonal influenza in children under 5 years in 2018: A systematic review and modelling study

Xin Wang

University of Edinburgh, Edinburgh, UK.

You Li

University of Edinburgh, Edinburgh, UK.

Katherine L. O'Brien

Johns Hopkins Bloomberg School of Public Health, Baltimore, MD, USA.

Qalab Abbas

Aga Khan University, qalab.abbas@aku.edu

Syed Asad Ali

Aga Khan University, asad.ali@aku.edu

See next page for additional authors

Follow this and additional works at: https://ecommons.aku.edu/pakistan_fhs_mc_women_childhealth_paediatr



Part of the [Influenza Virus Vaccines Commons](#), [Pediatrics Commons](#), and the [Respiratory Tract Diseases Commons](#)

Recommended Citation

Wang, X., Li, Y., O'Brien, K. L., Abbas, Q., Ali, S., Respiratory Virus Global Epidemiology Network, ., Yousafzai, M. T., Bhutta, Z. A., Soofi, S., Zaidi, A. (2020). Global burden of respiratory infections associated with seasonal influenza in children under 5 years in 2018: A systematic review and modelling study. *Lancet Global Health*, 8(4), e497-e510.

Available at: https://ecommons.aku.edu/pakistan_fhs_mc_women_childhealth_paediatr/913

Authors

Xin Wang, You Li, Katherine L. O'Brien, Qalab Abbas, Syed Asad Ali, Respiratory Virus Global Epidemiology Network, Mohammad Tahir Yousafzai, Zulfiqar Ahmed Bhutta, Sajid Bashir Soofi, and Anita K. M. Zaidi

Global burden of respiratory infections associated with seasonal influenza in children under 5 years in 2018: a systematic review and modelling study



Xin Wang, You Li, Katherine L O'Brien, Shabir A Madhi, Marc-Alain Widdowson, Peter Byass, Saad B Omer, Qalab Abbas*, Asad Ali*, Alberta Amu*, Eduardo Azziz-Baumgartner*, Quique Bassat*, W Abdullah Brooks*, Sandra S Chaves*, Alexandria Chung*, Cheryl Cohen*, Marcela Echavarría*, Rodrigo A Fasce*, Angela Gentile*, Aubree Gordon*, Michelle Groome*, Terho Heikkinen*, Siddhivinayak Hirve*, Jorge H Jara*, Mark A Katz*, Najwa Khuri-Bulos*, Anand Krishnan*, Oscar de Leon*, Marilla G Lucero*, John P McCracken*, Ainara Mira-Iglesias*, Jennifer C Moisi*, Patrick K Munywoki*, Millogo Ourohiré*, Fernando P Polack*, Manveer Rahi*, Zeba A Rasmussen*, Barbara A Rath*, Samir K Saha*, Eric AF Simões*, Viviana Sotomayor*, Somsak Thamthitawat*, Florette K Treurnicht*, Marylene Wamukoya*, Lay-Myint Yoshida*, Heather J Zar*, Harry Campbell, Harish Nair, for the Respiratory Virus Global Epidemiology Network†

Summary

Background Seasonal influenza virus is a common cause of acute lower respiratory infection (ALRI) in young children. In 2008, we estimated that 20 million influenza-virus-associated ALRI and 1 million influenza-virus-associated severe ALRI occurred in children under 5 years globally. Despite this substantial burden, only a few low-income and middle-income countries have adopted routine influenza vaccination policies for children and, where present, these have achieved only low or unknown levels of vaccine uptake. Moreover, the influenza burden might have changed due to the emergence and circulation of influenza A/H1N1pdm09. We aimed to incorporate new data to update estimates of the global number of cases, hospital admissions, and mortality from influenza-virus-associated respiratory infections in children under 5 years in 2018.

Methods We estimated the regional and global burden of influenza-associated respiratory infections in children under 5 years from a systematic review of 100 studies published between Jan 1, 1995, and Dec 31, 2018, and a further 57 high-quality unpublished studies. We adapted the Newcastle-Ottawa Scale to assess the risk of bias. We estimated incidence and hospitalisation rates of influenza-virus-associated respiratory infections by severity, case ascertainment, region, and age. We estimated in-hospital deaths from influenza virus ALRI by combining hospital admissions and in-hospital case-fatality ratios of influenza virus ALRI. We estimated the upper bound of influenza virus-associated ALRI deaths based on the number of in-hospital deaths, US paediatric influenza-associated death data, and population-based childhood all-cause pneumonia mortality data in six sites in low-income and lower-middle-income countries.

Findings In 2018, among children under 5 years globally, there were an estimated 109·5 million influenza virus episodes (uncertainty range [UR] 63·1–190·6), 10·1 million influenza-virus-associated ALRI cases (6·8–15·1); 870 000 influenza-virus-associated ALRI hospital admissions (543 000–1 415 000), 15 300 in-hospital deaths (5800–43 800), and up to 34 800 (13 200–97 200) overall influenza-virus-associated ALRI deaths. Influenza virus accounted for 7% of ALRI cases, 5% of ALRI hospital admissions, and 4% of ALRI deaths in children under 5 years. About 23% of the hospital admissions and 36% of the in-hospital deaths were in infants under 6 months. About 82% of the in-hospital deaths occurred in low-income and lower-middle-income countries.

Interpretation A large proportion of the influenza-associated burden occurs among young infants and in low-income and lower middle-income countries. Our findings provide new and important evidence for maternal and paediatric influenza immunisation, and should inform future immunisation policy particularly in low-income and middle-income countries.

Funding WHO; Bill & Melinda Gates Foundation.

Copyright © 2020 The Author(s). Published by Elsevier Ltd. This is an Open Access article under the CC BY 4.0 license.

Introduction

Acute lower respiratory infections (ALRIs) are one of the leading causes of morbidity and mortality in children globally, accounting for 16% of mortality in children under 5 years in 2015.¹ We previously estimated that, in 2015, 138 million ALRI cases, 22 million cases of severe ALRI, and 0·9 million ALRI deaths occurred globally.²

Seasonal influenza virus is an important pathogen associated with ALRI, detected in 3–7% of ALRI hospital admissions in children under 5 years.^{3,4} We previously estimated that 20 million episodes of influenza-virus-associated ALRI, 1 million episodes of severe influenza-virus-associated ALRI and 28 000–111 000 influenza-virus-associated ALRI deaths occurred in

Lancet Glob Health 2020; 8: e497–510

Published Online
February 20, 2020
[https://doi.org/10.1016/S2214-109X\(19\)30545-5](https://doi.org/10.1016/S2214-109X(19)30545-5)

See [Comment](#) page e454

*Authors listed alphabetically

†Members listed at the end of the paper

Centre for Global Health, Usher Institute, Edinburgh Medical School, University of Edinburgh, Edinburgh, UK (X Wang MSc, Y Li PhD, A Chung BMedSci(H), M Rahi MChB, Prof H Campbell MD, Prof H Nair PhD); Department of International Health, International Vaccine Access Center, Johns Hopkins Bloomberg School of Public Health, Baltimore, MD, USA (Prof K L O'Brien MD, W Abdullah Brooks MD); Medical Research Council: Respiratory and Meningeal Pathogens Research Unit; Department of Science and Technology/ National Research Foundation: Vaccine Preventable Diseases, Faculty of Health Sciences, University of the Witwatersrand, Johannesburg, South Africa (Prof S A Madhi PhD, M Groome PhD); Division of Global Health Protection, Center for Global Health, Centers for Disease Control and Prevention, Nairobi, Kenya (M-Al Widdowson VetMB); Institute of Tropical Medicine, Antwerp, Belgium (M-Al Widdowson); Department of Epidemiology and Global Health, Umeå University, Umeå, Sweden (Prof P Byass PhD); Yale

Institute for Global Health; Section of Infectious Diseases, Department of Medicine, Yale School of Medicine; Department of Epidemiology of Microbial Diseases, Yale School of Public Health, New Haven, CT, USA (Prof S B Omer PhD); Department of Pediatrics and Child Health, Aga Khan University, Karachi, Pakistan (Q Abbas MBBS, A Ali MD); Dodowa Health Research Centre, Dodowa, Ghana (A Amu MD); Influenza Division, Centers for Disease Control and Prevention, Atlanta, GA, USA (E Azziz-Baumgartner MD); Barcelona Global Health Institute, Hospital Clinic—University of Barcelona, Barcelona, Spain (Prof Q Bassat MD); Centro de Investigaç o em Sa de de Manh a, Maputo, Mozambique (Prof Q Bassat); Institut  Catalana de Recerca i Estudis Avançats, Barcelona, Spain (Prof Q Bassat); Pediatric Infectious Diseases Unit, Pediatrics Department, Hospital Sant Joan de D u (University of Barcelona), Barcelona, Spain (Prof Q Bassat); Consorcio de Investigaci n Biom dica en Red de Epidemiolog a y Salud P blica, Madrid, Spain (Prof Q Bassat); Influenza Program, Centers for Disease Control and Prevention, Nairobi, Kenya (S S Chaves MD); Centre for Respiratory Disease and Meningitis, National Institute for Communicable Diseases, Johannesburg, South Africa (C Cohen MD); School of Public Health, Faculty of Health Sciences, University of the Witwatersrand, Johannesburg, South Africa (C Cohen); Clinical Virology Unit, Centro de Educaci n M dica e Investigaciones Cl nicas, Argentina (M Echavarr a PhD); Public Health Institute of Chile, Regi n Metropolitana, Chile (R A Fasce BSc); Ricardo Guti rrez Children Hospital, Buenos Aires, Argentina (Prof A Gentile MD); Department of Epidemiology, School of Public Health, University of Michigan, Ann Arbor, MI, USA (A Gordon PhD); Department of Pediatrics, University of Turku and Turku University Hospital,

Research in context

Evidence before this study

We previously estimated that in 2008, influenza virus was associated with 13% of all childhood acute lower respiratory infections ALRI episodes, and 2–10% of all childhood ALRI deaths, with 99% of these deaths occurring in developing countries. Since then, additional studies have estimated influenza-virus-associated or influenza-virus-attributable morbidity and mortality burden in children under 5 years globally using different methods. One systematic review (by the Global Respiratory Hospitalizations—Influenza Proportion Positive Working Group) estimated that there were 870 000 (95% CI 610 000–1 237 000) influenza-virus-associated ALRI hospitalisations in 2012 by applying the percentage of hospitalised children with ALRI positive for influenza virus to all-cause ALRI hospitalisations. Another study (by the Global Seasonal Influenza-associated Mortality Collaborator Network) estimated that there were 44 888 (95% credible interval 9243–105 690) influenza-virus-associated respiratory deaths in 2015 by use of excess respiratory mortality regression models on vital deaths records and influenza surveillance data. The third study (by the Institute for Health Metrics and Evaluation) estimated that there were about 8 million influenza-virus-attributable ALRI cases, 2 200 000 influenza-virus-attributable ALRI hospitalisations, and 23 400 influenza-virus-attributable ALRI deaths in children under 5 years in 2017; the mortality estimate was modelled on all-cause ALRI deaths, the population attributable fraction for influenza virus in ALRI, and the ratio of case-fatality between viral ALRI and bacterial ALRI.

Added value of this study

Our review was based on laboratory-confirmed influenza infection morbidity and mortality data. We incorporated an

increased number of studies (157 studies in total, of which 78% were new data) compared to our previous analysis in 2008. Moreover, 36% of these studies were high quality unpublished data, and 39% from low-income and lower-middle income countries. The emergence and circulation of influenza A/H1N1pdm09 might have impacted the influenza burden globally. Inclusion of new data enabled us to provide new evidence in the era with the new influenza virus' circulation, informing future immunisation policy, especially in low-income and lower middle-income countries. In this review, we reported influenza-virus-associated respiratory disease burden by severity and by World Bank income level for age groups relevant for vaccine policy decisions. We estimated that influenza virus was associated with 7% of ALRI cases (10.1 million cases [uncertainty range (UR) 6.8–15.1]), 5% of ALRI hospitalisations (870 000 [UR 543 000–1 415 000]), and 4% of ALRI deaths (34 800 [UR 13 200–97 200]) in children under 5 years. About 23% of hospitalisations and 36% of in-hospital deaths were in infants younger than 6 months. About 82% of in-hospital deaths occurred in low-income and lower-middle income countries.

Implications of all the available evidence

Our updated review reports new influenza-virus-associated ALRI morbidity and mortality estimates in the era with the circulation of influenza A/H1N1pdm09. A large proportion of influenza-associated burden occurs among young infants and among children in low-income and lower-middle-income countries. Our findings provide new and important evidence for maternal and paediatric influenza immunisation, and should inform future immunisation policy particularly in low-income and middle-income countries.

children under 5 years in 2008.⁵ Despite this substantial burden, only 10% of low-income countries (LICs) and lower-middle-income countries (LMICs) have adopted national maternal or child influenza immunisation policies (13% for pregnant women) and, where present, most have achieved only low or unknown levels of vaccine uptake.^{6,9} Influenza burden might have changed since we calculated these previous estimates due to the emergence and circulation of influenza A/H1N1pdm09. We aimed to incorporate new data to estimate the global number of cases, hospitalisations, and mortality from influenza-virus-associated ALRI in children under 5 years in 2018. These updated global burden estimates should inform the development of influenza immunisation policies and resource allocation decisions for young children.

Methods

Systematic review

We did a systematic review of the influenza-virus-associated disease burden in children under 5 years

(appendix pp 4–6). We updated our previous review by searching Medline (Ovid), Embase (Ovid), Global Health (Ovid), CINAHL, Web of Science, and the Global Health Library for studies published between Jan 1, 2009 and Dec 31, 2018; earlier studies published from 1995 onwards in the previous review were also included.⁵ We also did our systematic review in three Chinese databases (CNKI, Wanfang, and Chongqing VIP), searching for studies published between Jan 1, 1995, and Dec 31, 2018. To search the grey literature, we also did broad searches through Google. No language or publication restrictions were applied, and reviewers screened the titles and abstracts for eligibility, and extracted data independently. Articles in non-Chinese or non-English were translated into English using Google Translate. Four reviewers (XW, YL, MR, and AC) screened the English-language databases. Two reviewers (XW and YL) screened the Chinese-language databases. Disagreements were resolved by HN.

We included studies that were published between Jan 1, 1995, and Dec 31, 2018, and reported any of

the following data in children younger than 5 years: community incidence rates of respiratory diseases (eg, influenza-like-illness, ALRI, and more severe infections) with laboratory-confirmed influenza virus; hospitalisation rates of ALRI, ALRI with hypoxaemia, or very severe ALRI with laboratory-confirmed influenza virus; in-hospital case-fatality ratios (hCFRs) of ALRI with laboratory-confirmed influenza virus.

Studies had to use a clearly defined case definition for specimen collection and testing, and studies that reported incidence and hospitalisation rate data had to show data for at least one complete calendar year (or at least one full influenza season if in a temperate region). We included hCFR data for any length of period.

We excluded studies: without a clear denominator population at risk (limited to those reporting incidence and hospitalisation rate data); those in which influenza was studied as a co-infection rather than the primary outcome (ie, only including cases tested negative for other pathogens, or only including cases co-infected with influenza virus and other pathogens); reporting modelled burden estimates; studies in which influenza virus infections were diagnosed based on serology alone (strict requirement on sampling timing and serial sampling; poor sensitivity); explicitly stating that they included any nosocomial infections in the numerator; only including

population subgroups with high-risk conditions; or reporting data from the pandemic period (2009–10 season in temperate regions and the year of 2009 in tropical regions), or reporting combined data for the non-pandemic and pandemic periods.

Identification and assembly of high-quality unpublished data

The Respiratory Virus Global Epidemiology Network is a collaboration network including more than 70 investigator groups working on respiratory viral infections (eg, respiratory syncytial virus and influenza virus) and provided additional unpublished data to supplement the systematic review.¹⁰ We formulated common case definitions and shared data through agreed common approaches to data analysis. Other investigators with relevant data were also invited to contribute data and participate in the analysis.

Definitions

A study was defined as a dataset from one site in one published paper or from one research group in the collaboration network. Similar to our previous analysis, we used separate case definitions for community-based studies with active case ascertainment and hospital-based studies with passive case ascertainment (appendix p 2).¹⁰

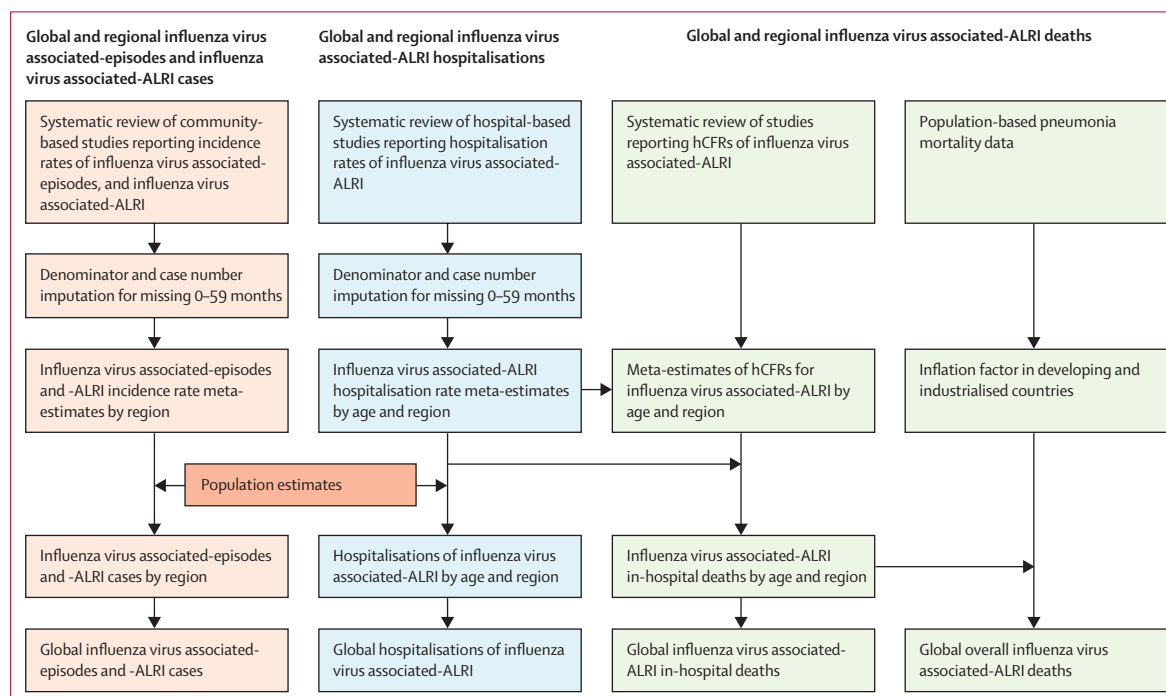


Figure 1: Approaches for estimation of global influenza virus morbidity and mortality in children under 5 years

We report the number of influenza virus episodes and the number of cases of influenza-virus-associated ALRIs, global influenza-virus-associated-ALRI hospitalisations, and global estimates of influenza-virus-associated ALRI deaths in hospital and overall deaths (in community). This figure summarises our approach for each outcome and also shows how they relate to each other. Global estimates of hospitalisations for influenza virus ALRI were estimated by applying hospitalisation rates to population estimates (2018). Influenza-virus-associated ALRI in-hospital deaths were estimated by combining in-hospital case fatality ratios (hCFRs) for cases and hospitalisations. The inflation factor was estimated using three approaches (appendix pp 20–26), and we determined to use the most conservative estimate to calculate the number of overall deaths (appendix pp 20–26). A detailed description of imputation is in the appendix (p 28). ALRI=acute lower respiratory infection.

Finland (Prof T Heikkinen MD); Vadu Rural Health program, KEM Hospital Research Centre, Pune, Maharashtra, India (S Hirve PhD); Center for Health Studies, Universidad del Valle de Guatemala, Guatemala City, Guatemala (J H Jara MD, O de Leon BSc, J P McCracken ScD); Chief Physician's Office, Clalit Health Services, Clalit Research Institute, Tel Aviv, Israel (M A Katz MD); Ben Gurion University of the Negev, School of Public Health and Medical School for International Health, Beer-Sheva, Israel (M A Katz); University of Michigan School of Public Health, Ann Arbor, MI, USA (M A Katz); Department of Pediatrics, University of Jordan School of Medicine, Amman, Jordan (Prof N Khuri-Bulos MD); Centre for Community Medicine, All India Institute of Medical Sciences, New Delhi, India (Prof A Krishnan MD); ARI Study Group, Research Institute for Tropical Medicine, Muntinlupa, Philippines (M G Lucero MD); Área de Investigación en Vacunas, Fundación para el Fomento de la Investigación Sanitaria y Biomédica de la Comunitat Valenciana (Salud Pública), Valencia, Spain (A Mira-Iglesias MSc); Agence de Médecine Préventive, Paris, France (J C Moisi PhD); KEMRI-Wellcome Trust Research Programme, Kilifi, Kenya (P K Munywoki PhD); Centre de Recherche en Santé de Nouna, Nouna, Burkina Faso (M Ouhouiré MD); Fundacion INFANT, Buenos Aires, Argentina (Prof F P Polack MD); Fogarty International Center, National Institutes of Health, Bethesda, MD, USA (Z A Rasmussen MD); Vienna Vaccine Safety Initiative, Berlin, Germany (Prof B A Rath MD); Department of Microbiology, Child Health Research Foundation, Dhaka, Bangladesh (Prof S K Saha PhD); Department of Pediatrics, Section of Infectious Diseases, University of Colorado, School of Medicine, Aurora, CO, USA (Prof E A F Simões MD); Department of Epidemiology and Center for Global Health, Colorado School of Public Health, Aurora CO, USA (Prof E A F Simões); Epidemiology Department,

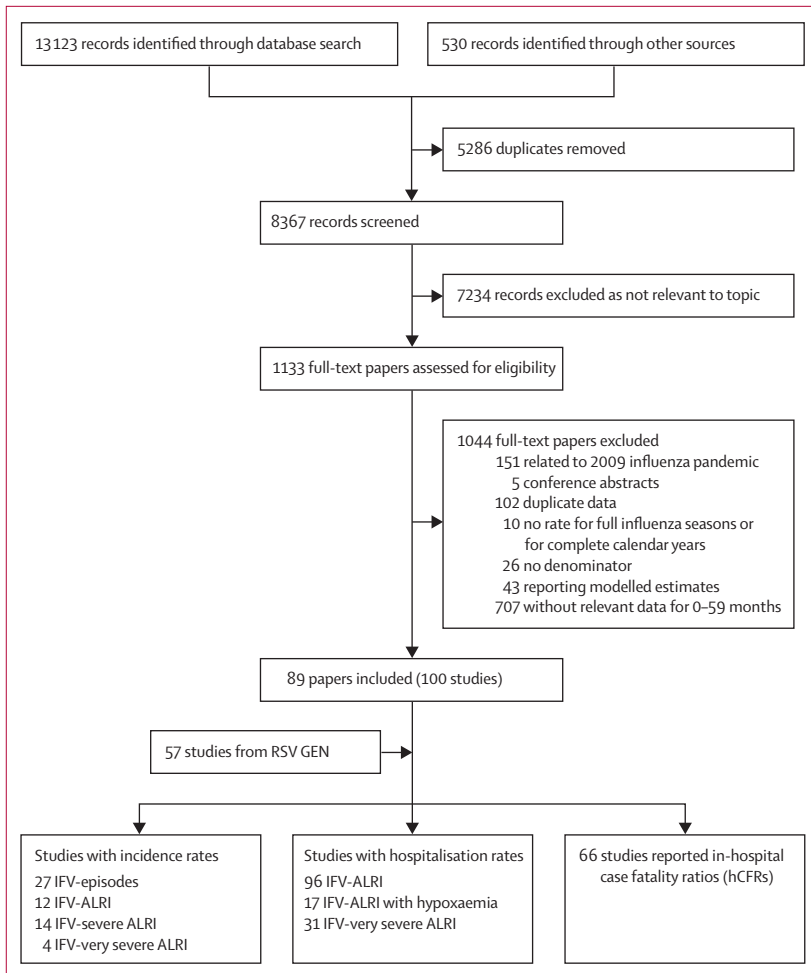


Figure 2: Flow diagram for selection of studies on seasonal influenza

For multisite papers, the site-specific data were extracted where available and were analysed as one study; in this way 100 studies were extracted from 89 papers. One study could provide data on multiple outcomes among the same population; therefore the total number of studies was greater than the sum of studies by outcomes. RSV GEN=Respiratory Virus Global Epidemiology Network. IFV=influenza virus. ALRI=acute lower respiratory infection.

Ministry of Health, Santiago, Chile (V Sotomayor MPH); Division of Global Health Protection, Thailand Ministry of Public Health; US CDC Collaboration, Nonthaburi, Thailand (S Thamthitawat MD); Department of Medical Virology, National Health Laboratory Service and School of Pathology, Faculty of Health Sciences, University of the Witwatersrand, Johannesburg, South Africa (F K Treurnicht PhD); African Population & Health Research Center, Nairobi, Kenya (M Wamukoya MPH); Department of Pediatric Infectious Diseases, Institute of Tropical Medicine, Nagasaki University, Nagasaki, Japan

For community-based studies, the 2005 WHO Integrated Management of Childhood Illnesses case definition¹¹ for clinical pneumonia was used to define ALRI since these definitions were used in most included community studies and have been widely used as indications for the treatment of pneumonia. Two further severity levels for community-based studies included severe ALRI (ie, ALRI with chest wall indrawing) and very severe ALRI (ie, ALRI with any general danger signs).¹¹ For hospital-based studies, where diagnoses were based on physicians' clinical judgment, we defined hospitalised ALRI as the physician-confirmed diagnosis of ALRI where hospitalisation was required or recommended. We defined two further severity levels: ALRI with hypoxaemia (SpO₂ <90%), and very severe ALRI (ie, children hospitalised with ALRI with any general danger signs,¹¹ admitted to intensive care units [ICUs], or requiring mechanical ventilation).

Assessment of risk of biases

We adapted the Newcastle-Ottawa Scale to assess the risk of bias in included studies.¹² The modified scale contains seven domains: study design, adjustment for health utilisation, patient groups excluded, case definition, sampling strategy (ie, how cases were selected for sample collection and testing), diagnostic testing, and hypoxaemia ascertainment (appendix pp 9–10). Critical assessments on the risk of bias (high or low) were made separately for each domain.

Statistical analysis

We extracted the number of cases and scaled the population-at-risk for the proportion of eligible patients who were tested per study where available (appendix p 27). We did stratified analyses by case ascertainment, severity, developing status according to UNICEF definitions, World Bank income level (LICs, LMICs, upper-middle-income [UMICs], and high-income countries [HICs]), and three non-overlapping age bands (0–5 months, 6–11 months, and 12–59 months).^{13,14} Due to the small number of studies in LICs (appendix pp 7–8), we combined LICs and LMICs (as LMICs) when reporting burden estimates. We imputed rates for missing 0–59 months using a multiple imputation approach to allow for the uncertainty in missing data, and imputed missing population-at-risks according to the population structure by country income group based on WHO life tables (appendix pp 28–29).^{15–17}

Figure 1 summarises our approach for burden estimation. We estimated incidence rates, hospital admission rates, and hCFRs of influenza virus-associated respiratory infections using a generalised linear mixed model.¹⁸ In our previous analysis, we used a classic random-effect model. Compared with the previous model, the current model has an advantage in analysing studies with few events and does not require adding a continuity correction in case of zero events. The meta-estimates of influenza-virus-associated ALRI hospitalisation rate from the mixed regression model were similar to those from the classic random-effects model for most age groups, except for infants under 3 months (appendix pp 62–63). We estimated influenza-virus-associated ALRI cases (severe and very severe) and hospitalisations as described previously.¹⁰ Incidence rates and hospitalisation rates were applied to the UN population estimates for 2018.^{19,20} The burden estimates and uncertainty ranges (URs) were calculated using Monte Carlo simulation, with the median value of 10 000 samples simulated from a log-normal distribution as the point estimate and the 2·5th and 97·5th percentiles as the 95% UR.¹⁰ We included all studies in the main analyses.

Previous evidence suggested that HIV infection²¹ was an important risk factor for influenza hospitalisation and death, and that the receipt of pneumococcal conjugate vaccine (PCV)^{22–25} was associated with reduced risk of

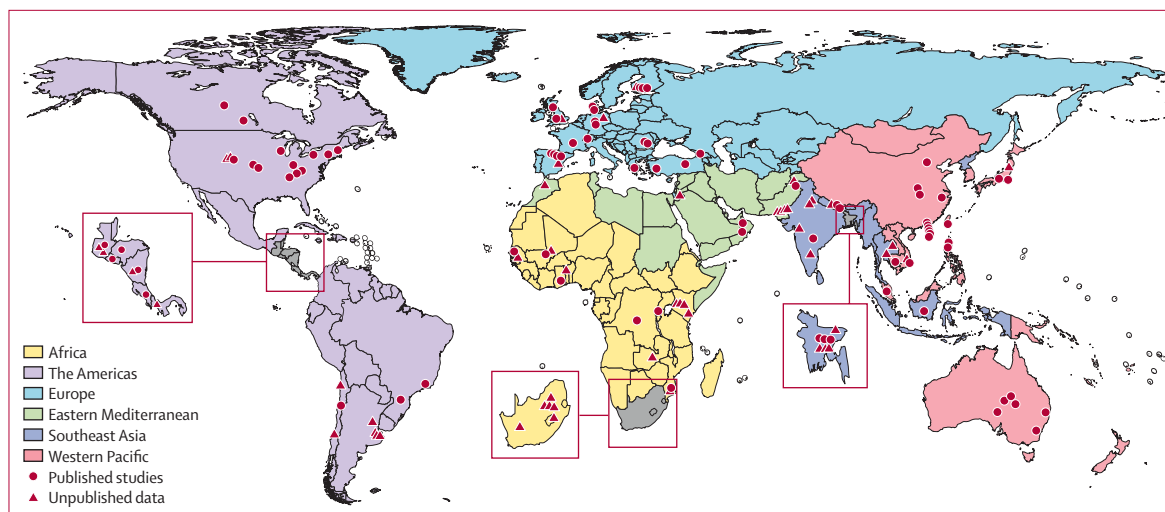


Figure 3: Location of included studies on influenza-virus-associated acute lower respiratory infection in children younger than 5 years

hospitalisation and death. As sensitivity analyses, we stratified data to assess how global influenza-virus-associated ALRI hospitalisations and in-hospital deaths were affected by (1) study bias (eg, a low risk of bias in sampling strategy), (2) low or high PCV coverage setting ($\leq 60\%$ or $>60\%$ in general population), and (3) low or high maternal HIV burden setting (according to the UNAIDS Global Plan; appendix pp 11–17).^{26,27} We considered maternal HIV burden a good proxy of HIV burden in young children because mother-to-child transmission of HIV accounted for most HIV infection in young children.²⁸ Results of sensitivity analyses are in the appendix (pp 11–19; 22–24). We also reported estimates for 2015 to enable comparisons with the 2015 estimates of respiratory syncytial virus ALRI burden (appendix, p 19).

We estimated in-hospital deaths by combining the influenza-virus-associated ALRI hospitalisations and hCFR meta-estimates as described previously.¹⁰ We included all studies in the main analysis of influenza-virus-associated ALRI in-hospital deaths, and conducted the same sensitivity analyses as described above for influenza-virus-associated ALRI hospitalisations (appendix pp 12–13, 16–17). For overall influenza-virus-associated ALRI mortality analysis, we invited investigators from the International Network for the Demographic Evaluation of Populations and their Health (INDEPTH) Network who had health and demographic surveillance data for defined populations to provide the numbers of pneumonia deaths occurring in and out of hospital.²⁹ We identified six sites (in Mozambique, Kenya, South Africa, Burkina Faso, and Ghana) with eligible data (appendix p 20). For industrialised countries, the US Influenza-Associated Pediatric Mortality Surveillance System reports the most relevant data to our knowledge: location-specific deaths for children under 18 years with laboratory-confirmed influenza virus infection.³⁰ For our analysis, we extracted the number of influenza-virus-associated

paediatric deaths occurring in communities, emergency departments, and hospitals over 14 years during 2004–18 (excluding the pandemic year of 2009–10). Location-specific data on deaths among children aged 0–4 years were unavailable. We assumed health-care access in the USA was similar to other industrialised countries.

We estimated overall influenza-virus-associated ALRI deaths by combining in-hospital deaths and the median inflation factor of overall influenza-virus-associated ALRI deaths versus in-hospital deaths.^{10,31} For industrialised countries we calculated the inflation factor directly by dividing the total number of paediatric influenza-virus-associated deaths by the number of deaths occurring in hospitals in the USA.³⁰ For developing countries where the number of influenza-virus-specific deaths by location was unavailable, we divided the total number of pneumonia deaths by in-hospital pneumonia deaths, and used the median value across countries to represent the inflation factor for influenza-virus-specific ALRI deaths. Using this approach, we assumed that the relative contribution of influenza to ALRI deaths was the same for hospital and community settings. In sensitivity analyses we used two alternative approaches (approaches 2 and 3 in appendix pp 20–26). Approach 2 and 3 shared the same strategy in applying the proportion of influenza-virus-associated ALRI deaths among all-cause ALRI deaths to national all-cause pneumonia deaths, then dividing the national number of influenza-virus-associated ALRI in-hospital deaths, to back-calculate the inflation factor.

All analyses were done in R version 3.5.2, specifically the metafor package.^{32,33} This study was done and reported in accordance with the Guidelines for Accurate and Transparent Health Estimates Reporting (GATHER) recommendations and the Strengthening the Reporting of Observational Studies in Epidemiology (STROBE) statement (appendix pp 72–74).^{34,35}

(Prof L-M Yoshida PhD); and Department of Paediatrics & Child Health and Medical Research Council unit on Child & Adolescent Health, University of Cape Town, Cape Town, South Africa (Prof HJ Zar PhD)

Correspondence to: Prof Harish Nair PhD, Centre for Global Health, Usher Institute, Edinburgh Medical School, University of Edinburgh, Teviot Place, Edinburgh EH8 9AG, UK harish.nair@ed.ac.uk

See Online for appendix

Role of the funding source

The funders of the study had no role in study design, data collection, data analysis, data interpretation, or writing of the report. XW and HN (the corresponding author) had full access to all the data in the study and HN had final responsibility for the decision to submit for publication.

Results

During 1995–2018, we identified 157 studies (123 new studies) providing data on community incidence, hospitalisation rates, and hCFRs (figure 2). Of these studies, 57 were unpublished and 100 were from published literature (89 papers). 106 studies (68%) were from developing countries; 14 studies (9%) were from LICs, 48 (31%) from LMICs, 29 (18%) from UMICs,

62 (39%) from HICs, and four studies from multiple countries from different country income groups (appendix pp 7–8; 30–58). Figure 3 shows where the included studies were conducted.

38 community-based studies reported incidence. 27 studies reported incidence of influenza virus episodes for 0–59 months, and 12 studies reported incidence for influenza-virus-associated ALRI cases (appendix pp 30–32). In 2018 among children under 5 years, we estimated 109·5 million (UR 63·1–190·6) influenza virus episodes and 10·1 million (UR 6·8–15·1) influenza-virus-associated ALRI cases globally. We were unable to estimate the burden in UMICs due to the scarcity of studies. We estimated 1·4 million (UR 0·6–3·4) severe influenza-virus-associated ALRI cases, and 0·4 million

	LMICs	UMICs	HICs	Developing countries	Industrialised countries	Global burden estimates*
Influenza virus episodes						
Age 0–5 months						
Studies	9	1	0	10
Incidence (per 1000 children per year)†	80·2 (40·9–151·6)	80·8 (44·2–143·1)
Episodes (1000s)	3552 (1848–6831)	5018 (2792–9023)
Age 6–11 months						
Studies	2	1	0	2
Incidence (per 1000 children per year)	165·9 (93·2–277·8)	164·8 (92·6–276·2)
Episodes (1000s)	7233 (4201–12 457)	10 162 (5902–17 502)
Age 12–59 months						
Studies	2	1	3	2	3	..
Incidence (per 1000 children per year)	138·6 (57·2–299·4)	..	147·3 (82·6–248·9)	138·6 (57·2–299·4)	147·3 (82·6–248·9)	..
Episodes (1000s)	47 524 (20 871–108 280)	..	7467 (4315–12 926)	67 125 (29 479–152 938)	8199 (4738–14 194)	74 448 (33 844–165 089)
Age 0–59 months						
Studies	8 (3)‡	1	9 (3)	8 (3)	10 (3)	..
Incidence (per 1000 children per year)	175·2 (101·5–302·3)	..	61·9 (32·5–117·9)	175·2 (101·5–302·3)	42·4 (17·2–104·8)	..
Episodes (1000s)	75 538 (43 911–129 996)	..	3925 (2068–7453)	106 557 (61 943–183 376)	2953 (1202–7259)	109 510 (63 145–190 635)
Influenza virus-associated ALRI cases						
Age 0–5 months						
Studies	4	1	0	5
Incidence (per 1000 children per year)	4·9 (2·2–10·8)	8·5 (2·6–26·9)
Episodes (1000s)	217 (98–479)	528 (165–1688)
Age 6–11 months						
Studies	4	1	0	5
Incidence (per 1000 children per year)	28 (23·6–33·3)	27·6 (23·4–32·6)
Episodes (1000s)	1229 (1036–1459)	1702 (1444–2008)
Age 12–59 months						
Studies	4	1	0	5
Incidence (per 1000 children per year)	16·7 (8·6–32·3)	15·6 (8·9–27·1)
Episodes (1000s)	5727 (29 66–11 062)	7556 (4344–13 149)
Age 0–59 months						
Studies	7 (3)‡	1	4 (3)	8 (3)	4 (3)	..
Incidence (per 1000 children per year)	14·6 (9·2–23·3)	..	9·3 (7·5–11·5)	15·6 (10·3–23·6)	9·3 (7·5–11·5)	..
Episodes (1000s)	6299 (3961–10 021)	..	590 (477–729)	9498 (6305–14 313)	648 (524–800)	10 145 (6829–15 113)

(Table 1 continues on next page)

	LMICs	UMICs	HICs	Developing countries	Industrialised countries	Global burden estimates*
(Continued from previous page)						
Severe influenza virus-associated ALRI cases						
Age 0–5 months						
Studies	11	1	0	12	0	..
Incidence (per 1000 children per year)	4.1 (1.8–9.3)	5.1 (2.2–11.9)
Episodes (1000s)	182 (80–411)	317 (137–733)
Age 6–11 months						
Studies	3	1	0	4	0	..
Incidence (per 1000 children per year)	3.9 (1.4–11.1)	6.1 (2.2–16.4)
Episodes (1000s)	171 (61–479)	376 (139–1021)
Age 12–59 months						
Studies	3	1	0	4	0	..
Incidence (per 1000 children per year)	1.2 (0.6–2.4)	1.9 (0.7–5.1)
Episodes (1000s)	412 (207–820)	920 (343–2471)
Age 0–59 months						
Studies	6 (3)‡	1	0	7 (3)	0	..
Incidence (per 1000 children per year)	1.7 (0.9–3.2)	2.4 (1.5–6)
Episodes (1000s)	727 (386–1371)	1438 (612–3384)
Very severe influenza virus-associated ALRI cases						
Age 0–5 months						
Studies	3	1	0	4	0	..
Incidence (per 1000 children per year)	0.1 (0–122.1)	0.3 (0–13.3)
Episodes (1000s)	4 (0–673)	19 (0–940)
Age 6–11 months						
Studies	3	1	0	4	0	..
Incidence (per 1000 children per year)	0.8 (0.2–4)	1 (0.3–3.5)
Episodes (1000s)	35 (8–156)	62 (18–209)
Age 12–59 months						
Studies	2	1	0	3	0	..
Incidence (per 1000 children per year)	0.3 (0–2)	0.5 (0.1–2.3)
Episodes (1000s)	103 (5–2024)	242 (51–1152)
Age 0–59 months						
Studies	3 (1)‡	1	0	4 (1)	0	..
Incidence (per 1000 children per year)	0.5 (0.1–2.8)	0.7 (0.2–2.7)
Episodes (1000s)	211 (37–1194)	416 (105–1641)
Data in parentheses are estimated uncertainty ranges. Data were imputed using a multiple imputation approach. ALRI=acute lower respiratory infection. LMICs=lower-middle income countries. UMICs=upper-middle income countries. HICs=high-income countries. ..=not available. *Global burden estimates were developed by summing up estimates for 0–59 months by country development status classified according to UNICEF definition. †Incidence was estimated using generalised linear mixed models. ‡Data in parentheses are the number of imputed studies.						
Table 1: Estimates of the incidence (per 1000 children per year), and number of influenza virus episodes and influenza virus-associated ALRI cases in children under 5 years in the community in 2018, by World Bank income level and development status						

(UR 0.1–1.6) very severe influenza-virus-associated ALRI cases in children under 5 years in developing countries (table 1).

We identified 96 studies reporting influenza-virus-associated ALRI hospital admission rates, including 59 studies with data on age groups 0–5 months, 6–11 months, or 12–59 months (appendix pp 37–43). Among children under 5 years, we estimated 870 000 hospital admissions (UR 543 000–1 435 000) for influenza-virus-associated ALRI globally, of which 23% and 21% were in infants aged 0–5 months and 6–11 months, respectively (table 2). An estimated

420 000 hospital admissions for influenza-virus-associated ALRI (UR 261 000–677 000) occurred in LMICs. In subgroup analyses of studies with low risk of bias and in analyses stratified by low or high national PCV coverage and by low or high national maternal HIV burden, the hospital admission estimates were similar to those in the main analysis; the point values ranged from 772 000 to 895 000 for hospital admissions, with wide and overlapping URs (appendix pp 11–15).

For infants under 1 year, incidence meta-estimates of influenza virus episodes and of influenza-virus-associated ALRI cases increased with age (p for linear trend <0.05 ,

	LMICs	UMICs	HICs	Developing countries	Industrialised countries	Global*
Influenza virus-associated ALRI						
Age 0–5 months						
Studies	13	9	13	24	11	..
Rate (per 1000 children per year)†	1.8 (1.1–3.1)	3.7 (1.8–7.4)	4.4 (3.1–6.3)	2.8 (1.8–4.3)	3.7 (2.7–5.3)	..
Hospital admissions (1000s)	80 (48–133)	68 (34–138)	28 (20–40)	174 (113–268)	26 (18–36)	200 (131–304)
Age 6–11 months						
Studies	11	8	9	21	7	..
Rate (per 1000 children per year)	1.5 (1–2.4)	3.8 (1.7–8.3)	3.5 (1.4–8.8)	2.7 (1.7–4.3)	2.6 (0.9–7.6)	..
Hospital admissions (1000s)	66 (43–102)	70 (32–154)	22 (9–55)	166 (105–264)	18 (6–52)	185 (111–317)
Age 12–59 months						
Studies	17	11	20	35	13	..
Rate (per 1000 children per year)	0.8 (0.5–1.3)	0.8 (0.3–2)	1.2 (0.6–2.2)	0.9 (0.6–1.5)	0.9 (0.4–1.8)	..
Hospital admissions (1000s)	274 (171–441)	117 (46–301)	61 (32–116)	436 (276–688)	50 (24–106)	486 (300–794)
Age 0–59 months						
Hospital admissions (1000s)	420 (261–677)	255 (111–593)	111 (60–211)	776 (494–1220)	94 (48–194)	870 (543–1415)
Influenza virus-associated ALRI with hypoxaemia						
Age 0–5 months						
Studies	8	2	..	10
Rate (per 1000 children per year)	0.9 (0.5–1.6)	0.9 (0.5–1.5)	..	0.9 (0.6–1.4)
Hospital admissions (1000s)	40 (22–71)	17 (10–29)	..	56 (37–85)
Age 6–11 months						
Studies	8	2	..	10
Rate (per 1000 children per year)	0.7 (0.3–1.4)	1 (0.7–1.6)	..	0.8 (0.5–1.1)
Hospital admissions (1000s)	31 (14–66)	18 (12–28)	..	49 (33–73)
Age 12–59 months						
Studies	8	1	2	9	2	..
Rate (per 1000 children per year)	0.2 (0.1–0.4)	..	0 (0–1.3)	0.2 (0.1–0.3)	0 (0–1.3)	..
Hospital admissions (1000s)	69 (34–137)	..	0 (0–4)	97 (56–167)	0 (0–4)	97 (56–172)
Age 0–59 months						
Hospital admissions (1000s)	139 (71–274)	202 (126–326)	7 (1–62)‡	209 (127–387)
Very severe influenza virus-associated ALRI						
Age 0–5 months						
Studies	9	3	2	12	2	..
Rate (per 1000 children per year)	0.6 (0.2–1.4)	0.2 (0.1–0.4)	0.3 (0.1–0.7)	0.3 (0.1–0.9)	0.3 (0.1–0.7)	..
Hospital admissions (1000s)	27 (10–70)	4 (2–7)	2 (1–5)	19 (6–56)	2 (1–6)	21 (7–61)
Age 6–11 months						
Studies	9	3	2	12	2	..
Rate (per 1000 children per year)	0.5 (0.3–0.9)	0.3 (0.1–1)	0.1 (0–0.6)	0.4 (0.2–0.8)	0.1 (0–0.6)	..
Hospital admissions (1000s)	22 (13–38)	6 (2–17)	1 (0–7)	25 (12–49)	1 (0–8)	25 (12–57)
Age 12–59 months						
Studies	9	5	8	16	6	..
Rate (per 1000 children per year)	0.1 (0–0.3)	0.1 (0–0.2)	<0.05	0.1 (0–0.2)	<0.05	..
Hospital admissions (1000s)	34 (4–263)	15 (2–92)	0 (0–0)	48 (8–303)	0 (0–0)	49 (8–304)
Age 0–59 months						
Hospital admissions (1000s)	83 (27–371)	24 (6–116)	3 (1–12)	92 (26–408)	3 (1–13)	95 (28–421)

Data in parentheses are estimated uncertainty ranges. ALRI=acute lower respiratory infection. LMICs=lower-middle income countries. UMICs=upper-middle income countries. HICs=high-income countries. ..=not available. *Global burden estimates were developed by summing up estimates in three non-overlapping age groups (0–5 months, 6–11 months, and 12–59 months), and in developing and industrialised countries classified according to UNICEF definition. †Hospital admissions rates were estimated using generalised linear mixed models. ‡In industrialised countries, two studies reported the hospital admission rates for influenza virus-associated ALRI with hypoxaemia for 0–59 months; the meta-estimate was 0.1 (<0.05–0.4), translating to 7000 (UR 1000–62 000) hospital admissions.

Table 2: Estimates of hospital admission rates (per 1000 children per year), and number of hospital admissions in children under 5 years with influenza virus-associated ALRI in 2018, by World Bank income level and development status

	LMICs	UMICs	HICs	Developing countries	Industrialised countries	Global*
Studies†	10	11	7	23	5	..
Age 0–5 months						
hCFR (%)‡	3.2 (0.6–15.4)	2.6 (0.9–7.5)	0.5 (0–4.6)	3.1 (1.3–6.9)	0.3 (0–6.9)	..
Deaths	2500 (500–13 800)	1800 (500–6200)	100 (0–4100)	5400 (2100–13 700)	100 (0–2700)	5500 (2100–16 300)
Age 6–11 months						
hCFR (%)	8.1 (4.1–15.3)	0.7 (0.1–7.4)	0.8 (0.2–3.2)	2.0 (0.6–6.2)	0.9 (0.2–3.4)	..
Deaths	5300 (2400–11 600)	500 (0–4700)	200 (0–900)	3300 (900–11 500)	200 (0–900)	3500 (1000–12 400)
Age 12–59 months						
hCFR (%)	3.3 (1.7–6.3)	0.8 (0.3–2.2)	0.4 (0.1–2.1)	1.4 (0.7–2.8)	0.4 (0.1–2.7)	..
Deaths	9100 (4000–20 100)	900 (200–3700)	200 (0–1300)	6100 (2700–13 800)	200 (0–1200)	6300 (2700–14 900)
Age 0–59 months						
Deaths	17 000 (6900–45 100)	3200 (800–14 400)	600 (100–6200)	14 800 (5700–39 000)	500 (100–4800)	15 300 (5800–43 800)

Data in parentheses are estimated uncertainty ranges. ALRI=acute lower respiratory infection. LMICs=lower-middle income countries. UMICs=upper-middle income countries. HICs=high-income countries. ..=not available. *Global estimates were calculated by summing up estimates in three non-overlapping age groups (0–5 months, 6–11 months, and 12–59 months), and in developing and industrialised countries according to UNICEF definitions. †hCFR meta-estimates were based on studies providing data for the three non-overlapping age bands. ‡hCFRs were estimated using generalised linear mixed models.

Table 3: In-hospital case fatality ratio (hCFR) meta-estimates and in-hospital deaths in children under 5 years with influenza virus-associated ALRI in 2018, by World Bank income level and development status

appendix p 67). The linear trend for hospital admission rates was not significant. However, the hospital admission rate of influenza-virus-associated ALRI was lower in neonates (0.9 per 1000 neonates per year, 95% CI 0.4–1.8), and was consistently higher in infants older than 1 month (1.6–1.9 per 1000 infants per year) in developing countries. Only two studies reported hospital admission rates of influenza-virus-associated ALRI by narrow age groups among infants in industrialised countries.

Based on 15 studies, we estimated 209 000 hospital admissions for influenza-virus-associated ALRI with hypoxaemia (UR 127 000–387 000) globally in children under 5 years. An estimated 139 000 (UR 71 000–274 000) hospital admissions occurred in LMICs (table 2). For very severe influenza-virus-associated ALRI, based on 24 studies, we estimated 95 000 (UR 28 000–421 000) hospital admissions in children under 5 years globally, 22% and 26% in infants aged 0–5 months and 6–11 months, respectively (table 2). An estimated 83 000 (UR 27 000–371 000) hospital admissions for very severe influenza-virus-associated ALRI occurred in LMICs.

66 studies reported hCFRs for influenza-virus-associated ALRI in children under 5 years, including 28 studies with data on three non-overlapping age bands (appendix pp 49–53). We estimated that hCFRs for influenza-virus-associated ALRI were 3.1% (95% CI 1.3–6.9), 2.0% (0.6–6.2), and 1.4% (0.7–2.8) in children aged 0–5 months, 6–11 months, and 12–59 months in developing countries, respectively (table 3). By country-income group, hCFRs were higher in LMICs (3.4%, 95% CI 1.4–7.9, for 0–59 months) than UMICs (1.4%, 0.6–3.5) and HICs (0.5%, 0.2–1.4). The analysis stratified by age and country development status yielded 15 300 influenza-virus-associated ALRI (UR 5800–43 800) in-hospital deaths in children

under 5 years, with 36% and 23% among infants aged 0–5 months and 6–11 months, respectively. About 82% of influenza-virus-associated ALRI in-hospital deaths occurred in LMICs. We did stratified analyses in studies with low risk of bias, by low or high national PCV coverage and by low or high maternal HIV burden. In these sensitivity analyses, in-hospital mortality estimates were similar to those in the main analysis; the point values ranged from 13 800 to 20 800 for in-hospital mortality, with wide and overlapping URs (appendix pp 12–13, 16–17).

For industrialised countries, we estimated an inflation factor of 1.6 (range 1.3–1.9 across 14 years) based on the data for US paediatric influenza-virus-associated deaths. For developing countries, we used an inflation factor of 2.3 in the main analysis (range 1.5–3.5 across six sites), and estimated an overall influenza-virus-associated ALRI mortality of 34 800 (UR 13 200–97 200) in children under 5 years globally. In sensitivity analyses, we estimated a higher inflation factor in approach 2 (3.0) and approach 3 (3.4). Using the two approaches, the point overall mortality estimate could increase by 30–47%, with wide and overlapping URs (appendix pp 20–26).

Discussion

We estimated that globally in 2018, in children under 5 years, there were 109.5 million influenza virus episodes, around 10 million cases of influenza-virus-associated ALRI, about 870 000 hospital admissions for influenza-virus-associated ALRI, 15 000 in-hospital deaths from influenza-virus-associated ALRI, and around 35 000 total deaths from influenza-virus-associated ALRI. The wide uncertainty ranges of the burden estimates reflected differences across studies, arising from the variation in influenza activity between seasons, variation

in influenza epidemiology between populations and methodological differences, and lack of data, especially mortality data.

The incidence rates of influenza virus episodes and influenza-virus-associated severe ALRI in children under 5 years were consistent with our previous estimates for 2008.⁵ However, we estimated a lower incidence of influenza-virus-associated ALRI compared with the previous review for 0–59 months in developing countries. In the previous review, the incidence of influenza-virus-associated ALRI was only based on three studies from two sites. Our updated estimate was refined by incorporating new data with larger sample sizes achieved by multiple-season observation and data from more geographically diverse areas (12 studies). Improved influenza vaccine uptake is not likely to be the reason for the lower incidence of influenza-virus-associated ALRI since paediatric influenza immunisation policy had not been introduced (in Bangladesh, India, and Pakistan), or was only introduced in children with chronic diseases (in Nicaragua), or achieved low coverage (in South Africa) during the study periods.³⁶ The national PCV coverage was above 60% midway in three studies in Nicaragua, Pakistan, and South Africa; increase in PCV uptake might contribute to the lower point value of incidence rates.^{26,37} The reduction in influenza-virus-associated ALRI incidence rates is consistent with a general decrease in the incidence of all-cause ALRI.² Our estimate of influenza-virus-associated ALRI cases, after accounting for the attributable fraction of influenza virus in influenza-virus-associated ALRI (80%), generally agreed with the number of influenza-virus-attributable ALRI cases (about 8 million) estimated by the Institute for Health Metrics and Evaluation (IHME).

We estimated about 870 000 influenza-virus-associated ALRI hospitalisations (about 5% of all-cause hospitalised ALRI), similar to our previous estimate.^{5,38} Our estimate developed using an incidence-based approach, is lower than the IHME estimate of influenza-virus-attributable ALRI hospitalisations for 2017 (about 2 200 000) derived from a proportion-based approach.³⁹ The difference in the two estimates might reflect the difference in analytical methods; data used in the two analytical methods were not directly comparable. Nevertheless, a previous study reported an estimate similar to our result, although using a proportion-based approach.⁴ Our global estimates for influenza-virus-associated ALRI hospitalisations changed marginally (if at all) in sensitivity analyses, suggesting that they were not affected by study biases, or inclusion of data from different settings—eg, with different PCV coverages and HIV burden. The primary objective of doing these sensitivity analyses was to assess to what extent the global estimates would be affected by these factors. It is important to note that the estimates in the stratified analyses by PCV coverage (and by 2009) were not directly comparable because most data were from different areas. We identified five studies reporting

influenza-virus-associated ALRI hospitalisation rates for at least 5 consecutive years with PCV introduced midway. In a pooled regression analysis of the five studies, we did not find a significant difference in influenza-virus-associated ALRI hospitalisation rates between high PCV coverage periods and low coverage periods. However, this finding needs to be interpreted with caution because the five studies had short observation periods (5–8 years). In the main analyses of influenza-virus-associated ALRI hospitalisations, most studies were from the post-2009 period, and hospitalisation estimates did not change after excluding pre-2009 data. Moreover, the estimate did not change after excluding 2010 data, when the influenza pandemic affected some regions.⁴⁰ 80% of influenza-virus-associated ALRI can be attributed to influenza based on a systematic review of case-control studies investigating the viral profile in children under 5 years with and without ALRI. Thus, based on our estimate, 696 000 ALRI hospitalisations could be attributed to influenza virus in children under 5 years.⁴¹

We estimated 15 300 influenza-virus-associated ALRI in-hospital deaths based on 28 hCFR studies. The estimates were not affected by risk of bias or by the inclusion of data from different PCV coverage settings and HIV burden settings. We estimated up to 4% of all childhood ALRI deaths were associated with influenza virus.² Our estimate was between the IHME influenza-virus-attributable ALRI mortality estimate (about 23 400 influenza-virus-attributable ALRI deaths in 2017) and the influenza-virus-associated respiratory mortality estimate in a study by Iuliano and colleagues (44 888, 95% credible interval 9243–105 690, in 2015) for 92 countries where 92% of respiratory deaths occurred.^{39,42} The IHME mortality estimate was modelled on all-cause ALRI deaths, the percentage of influenza virus in patients with ALRI from published literature, the attributable fraction of influenza virus for influenza-virus-confirmed ALRI, and the ratio of case-fatality between viral ALRI and bacterial ALRI (viral-to-bacterial case fatality ratio).³⁹ Iuliano and colleagues did a time series analysis using records for vital respiratory deaths and influenza circulation data in three countries, and extrapolated these to other countries. The different estimates in the two studies reflected the difference in case definitions (respiratory deaths vs ALRI deaths) and in statistical models;⁴³ we used three different approaches to model the number of overall deaths, and reported the most conservative influenza-virus-associated ALRI mortality burden.

For calculation of the upper bound of influenza-virus-associated ALRI mortality (overall influenza-virus-associated ALRI mortality), we estimated a more conservative inflation factor (2·3) for developing countries in the main analysis than those used in another two approaches in sensitivity analyses (3·0 in approach 2 and 3·4 in approach 3). Each approach has potential biases. One modelling study in South Africa estimated that

a significantly higher percentage of influenza-virus-attributable deaths occurred outside hospitals than the percentage of all-cause deaths occurring outside hospitals (57% versus 41%).⁴⁴ This finding suggests that using the inflation factor for all-cause pneumonia might underestimate the influenza-virus-specific estimate in the main analysis. Potential biases for approaches 2 and 3 are explained in the appendix, pp 20–24. Although estimated using data from six sites, the estimated inflation factor was still limited by lack of data. Health-care access varies significantly across the world; most data we included were from rural areas and from LMICs. The inflation factor and the upper bound of mortality estimate in developing countries might be overestimated due to the poor access to health care at these sites. Care-seeking has been investigated in national household surveys of 11 Middle East and North African countries: 34–80% (median 70% approximately) of children under 5 years with acute respiratory infections (caregiver's self-report) sought care in health facilities.⁴⁵ However, it is still challenging to understand the scenario of ALRI deaths from these data. For industrialised countries, we estimated the inflation factor using mortality data for 0–17 years, which might cause an underestimation if young children are more likely to die before being admitted, or an overestimation if young children are more likely to be taken to health-care facilities when they are sick.⁴⁶

We estimated the highest hCFRs in LMICs, and 82% of the in-hospital deaths occurred in these countries. However, only 10% of LICs and LMICs have had a national policy for influenza immunisation in children (13% for pregnant women) in 2014.⁹ Where present there were mostly very low or unknown levels of vaccine coverage.^{6,47–50} According to previous evidence, a high influenza vaccine coverage (about 70%) can substantially reduce influenza-associated hospitalisations and deaths in children under 5 years of age.⁵¹

A large proportion of influenza-virus-associated ALRI hospitalisations (44%) and in-hospital deaths (59%) occurred during infancy, with 23% of hospitalisations and 36% of the in-hospital deaths in infants under 6 months. Our estimates of influenza-virus-associated ALRI hospitalisations are likely to underestimate the effect of influenza. Influenza can cause primary infections or expose children to severe secondary bacterial infections while not being detected at specimen collection. Maternal influenza vaccination trials assessing vaccine efficiency against hospitalised ALRI might help to understand the direct and indirect effects of influenza in causing ALRI.^{52,53} The infant data we included were from developing countries with either no influenza immunisation policy or low influenza vaccine coverage in pregnant women during the study periods (ie, Bangladesh, Guatemala, India, Kenya, Mozambique, South Africa, and Thailand).^{36,54,55} Findings from two trials in Mali and South Africa suggested that maternal influenza immunisation is an effective

intervention against influenza infections in the first 3 months of age.^{56,57} Influenza virus predisposes individuals to secondary bacterial infection and adverse outcomes associated with such infections.⁵⁸ Therefore, preventing influenza virus through maternal immunisation could play a role in reducing the burden of all-cause ALRI. For example, in a pooled analysis of three maternal influenza immunisation trials in South Africa, Mali, and Nepal, there was a 20% reduction in all-cause severe clinical pneumonia in infants under 6 months.⁵³ However, there was heterogeneity in this effect between three trials; therefore, it would be challenging to quantify the global effect of maternal influenza immunisation on reducing all-cause ALRI in early infancy.

Our burden estimates were generally robust to the sensitivity analyses we performed. However, there were some limitations in our review. First, although we pre-specified case definitions, heterogeneity between studies still existed; for example, 50% of hospital-based studies used other definitions (eg, hospitalised acute respiratory infection). This might cause an overestimation of influenza-virus-associated ALRI hospitalisations. Second, PCR was used in about 70% of hospital-based studies to detect influenza, and diagnostic tools with lower sensitivity were used in 30% of studies. However, the hospitalisation estimates did not change when restricting the analysis to these PCR studies. Third, not all infections were tested for influenza virus. For incidence and hospitalisation rates, we have adjusted for underdetection, assuming the proportion of influenza virus in tested and untested cases was the same. Studies were systematically assessed, and the rates might have been biased in some studies: for influenza-virus-associated ALRI hospitalisation rates, at least 90% of eligible cases were tested in 50% of studies; less than 90% of cases were tested in 30% of studies, and the main reasons for not collecting specimens included cases being tested systematically (17%), refusal and discharge (10%), and unknown reasons (3%); in the remaining 20% of studies the proportion tested was unavailable. We reported unadjusted hCFRs, which might be underestimated because children who were very ill were less likely to be sampled and tested, as suggested by the higher hCFRs among untested cases than those tested (appendix p 26). Fourth, hospitalisation estimates were affected by access to health care and health-seeking behaviour, so the potential numbers of influenza-virus-associated ALRI hospitalisations are likely to be higher in resource-limited areas and in older children who are less likely to be taken to health-care facilities when they are sick.⁴⁶ Furthermore, influenza vaccine coverage has increased over the last decade in industrialised countries (eg, in the USA). Estimates based on data during the low vaccine coverage period could cause an overestimation. Due to the scarcity of influenza vaccine coverage data in most countries, we determined not to adjust influenza vaccine use in estimating influenza-associated burden.

Based on 157 studies of which 123 studies were not included in our 2008 estimates, we reported the new estimates in the era with the circulation of influenza A/H1N1pdm09. Although we included more studies than our previous review, estimates were still based on limited data. High-quality in-hospital mortality data, especially from LICs, are needed to improve the global in-hospital mortality estimate. Studies reporting age-stratified influenza-virus-associated ALRI morbidity and mortality burden should be encouraged. Moreover, further influenza-virus-associated ALRI mortality studies should ensure optimal sample size for robust mortality estimation. These efforts will help refine estimates of global burden of influenza in young children and understand the role of influenza in childhood disease, and inform policy. The initiation of post-mortem surveillance such as in the Child Health and Mortality Prevention Surveillance Network, will provide evidence to improve influenza-virus-associated mortality estimation.⁵⁹

Contributors

HN and HC conceptualised the study. XW led the literature review with contributions from YL, AC, and MR. XW led the data analysis with contributions from YL and M-AW. XW, HN, HC, KLO'B, SAM, M-AW, PB, and SBO led the data interpretation. XW wrote the first draft of the manuscript with input from HN, HC, KLO'B, SAM, M-AW, PB, and SBO. All named authors of the Respiratory Virus Global Epidemiology Network contributed to development of the analysis plan, collection and analysis of primary data, data interpretation, and critically reviewed the revised initial draft of the manuscript. All members of the Respiratory Virus Global Epidemiology Network contributed to data collection, data analysis, and critically reviewed the manuscript. All authors read and approved the final draft.

Respiratory Virus Global Epidemiology Network

Harish Nair, Harry Campbell, Xin Wang, You Li, Alexandria Chung, Manveer Rahi (University of Edinburgh, Scotland, UK); Qalab Abbas, Asad Ali, Zulfiqar A Bhutta, Bushra Saeed, Sajid B Soofi, Mohammad Tahir Yousafzai, Anita K Zaidi (The Aga Khan University, Pakistan); Alberta Amu, Elizabeth Awini (Dokowa Health Research Centre, Ghana); Eduardo Azziz-Baumgartner, Henry C Baggett, Sandra S Chaves, Nong Shang, Stephanie J Schrag, Marc-Alain Widdowson, Stefano Tempia (Centers for Disease Control and Prevention, Atlanta, GA, USA); Quique Bassat (ISGlobal, Hospital Clínic—Universitat de Barcelona, Barcelona, Spain; Centro de Investigação em Saúde de Manhiça, Maputo, Mozambique; Institució Catalana de Recerca i Estudis Avançats, Barcelona, Spain; Pediatric Infectious Diseases Unit, Pediatrics Department, Hospital Sant Joan de Déu, Barcelona, Spain; Consorcio de Investigación Biomédica en Red de Epidemiología y Salud Pública, Madrid, Spain); Miguel Lanasa (Centro de Investigação em Saúde de Manhiça, Maputo, Mozambique; ISGlobal, Barcelona Ctr. Int. Health Res., Hospital Clínic-Universitat de Barcelona, Spain); Sozinho Acácio (Centro de Investigação em Saúde de Manhiça, Mozambique); W Abdullah Brooks, Amanda Driscoll, Maria Deloria Knoll, Katherine L O'Brien, Christine Prosseri, Abdullah H Baqui, Luke Mullany (Johns Hopkins Bloomberg School of Public Health, Baltimore, MD, USA); Peter Byass (Umeå University, Sweden); Cheryl Cohen, Anne von Gottberg, Orienka Hellferscee, Florette K Treurnicht, Sibongile Walaza (National Institute for Communicable Diseases, Johannesburg, South Africa); Doli Goswami, Mustafizur Rahman, Nicholas E Connor, Shams El Arifeen (International Centre for Diarrhoeal Disease Research, Bangladesh, "icddr.b"); Marcela Echavarría, Débora N Marcone, Noelia Reyes (Clinical Virology Unit, Centro de Educación Médica e Investigaciones Clínicas "CEMIC", Argentina); Rodrigo A Fasce (Public Health Institute, Chile); Andrea Gutierrez (SEREMI de Salud, Concepcion, Bio Bio); Ivan Rodriguez (Hospital G. Grant Benavente, Concepcion, Chile); Olga Lopez, David Ortiz (Hospital Doctor Ernesto Torres Galdames,

Chile); Nathaly Gonzalez (SEREMI de Salud, Iquique, Tarapaca, Chile); Angela Gentile, Maria del Valle Juarez (Ricardo Gutierrez Children Hospital, Argentina); Aubree Gordon (University of Michigan, MI, USA); Clare Cutland, Michelle Groome, Shabir A Madhi, Marta C Nunes, Susan Nzenze (University of the Witwatersrand, Johannesburg, South Africa); Terho Heikkinen (University of Turku and Turku University Hospital, Finland); Siddhivinayak Hirve, Sanjay Juvekar (KEM Hospital Research Centre, India); Natasha Halasa (Vanderbilt University Medical Center, Nashville, TN, USA); Jorge H Jara, Chris Bernart (Universidad del Valle de Guatemala); Mark A Katz, Ilan Gofer (Clalit Research Institute, Israel); Yonat Shemer Avni (Ben Gurion University of the Negev, Israel); Najwa Khuri-Bulos (University of Jordan school of medicine, Jordan); Samir Faori (Ministry of Health, Amman, Jordan); Asem Shehabi (Department of Pathology-Microbiology, University of Jordan, Amman, Jordan); Anand Krishnan, Rakesh Kumar, Ritvik Amarchand (All India Institute of Medical Sciences, India); Carmen L Contreras, Oscar de Leon, Maria R Lopez, John P McCracken, Herberth Maldonado, Antonio P Samayoa, Ana B Gomez (Universidad del Valle de Guatemala, Guatemala); Marilla G Lucero, Leilani T Nillos, Socorro P Lupisan (Research Institute for Tropical Medicine, Philippines); Hanna Nohynek (National Institute for Health and Welfare, Helsinki, Finland); Ainara Mira-Iglesias, Joan Puig-Barberà, Javier Díez-Domingo (Fundación para el Fomento de la Investigación Sanitaria y Biomédica de la Comunitat Valenciana, Spain); Bradford D Gessner, Berthe-Marie Njanpop-Lafourcade, Jennifer C Moisi, Haoua Tall (Agence de Médecine Préventive, Paris, France); Patrick K Munywoki, Mwanjuma Ngama, D James Nokes (KEMRI-Wellcome Trust Research Programme, Kenya and School of Life Sciences, University of Warwick, UK); Saad B Omer, Dayna R Clark (Emory University Rollins School of Public Health, Atlanta, GA, USA); Millogo Ouhohiré, Sié Ali, Zabré Pascal, Bagagnan H Cheik (Centre de Recherche en Santé de Nouna, Burkina Faso); Mauricio T Caballero, Romina Libster, Fernando P Polack (Fundacion INFANT, Argentina); Zeba A Rasmussen, Elizabeth D Thomas, Julia M Baker (Fogarty International Center, National Institutes of Health [NIH], USA); Barbara A Rath, Patrick E Obermeier (Vienna Vaccine Safety Initiative, Germany); MD. Hassanuzzaman, Maksuda Islam, Mohammad S Islam, Samir K Saha (Child Health Research Foundation, Dhaka, Bangladesh); Pinaki Panigrahi (University of Nebraska Medical Center, NE, USA); Anuradha Bose, Rita Isaac (Christian Medical College, India); David Murdoch (University of Otago, Christchurch, New Zealand); Pritish Nanda (Asian Institute of Public Health, India); Shamim A Qazi (Department of Child and Adolescent Health and Development, World Health Organization, Switzerland); Danielle Hessong, Eric AF Simões (University of Colorado, Aurora CO, USA); Viviana Sotomayor (Ministry of Health, Chile); Somsak Thamthitawat (Thailand Ministry of Public Health-US Centers for Disease Control and Prevention Collaboration, Nonthaburi, Thailand); Malinee Chittaganpitch (Ministry of Public Health, Thailand); Halima Dawood (University of KwaZulu Natal, Pietermaritzburg, South Africa); Catherine Kyobutungi, Marylene Wamukoya, Abdhalah K Ziraba (African Population & Health Research Center, Nairobi, Kenya); Lay-Myint Yoshida, Keisuke Yoshihara (Institute of Tropical Medicine, Nagasaki University, Japan); Duc-Anh Dand, Minh-Nhat Le (National Institute of Hygiene and Epidemiology, Hanoi, Vietnam); Mark P Nicol, Heather J Zar (University of Cape Town, South Africa); Shobha Broor (Shree Guru Gobind Singh Tricentenary University, India); Mandeep Chadha (National Institute of Virology, Pune, India); Lola Madrid (London School of Hygiene & Tropical Medicine, London, UK); Lionel Gresh (Sustainable Sciences Institute, Managua, Nicaragua); Angel Balmaseda (National Virology Laboratory, Centro Nacional de Diagnóstico y Referencia, Ministry of Health, Managua, Nicaragua); Guillermina Kuan (Centro de Salud Sócrates Flores Vivas, Ministry of Health, Managua, Nicaragua); Niteen Wairagkar (Bill & Melinda Gates Foundation, Seattle, WA, USA; Vaccines for All, Pune, India); Milagritos D Tapia (University of Maryland School of Medicine, Baltimore, MD, USA); Stacey L Knobler (Sabin Vaccine Institute, Washington, DC, USA); Alfredo Barahona (Hospital Materno Infantil José Domingo De Obaldía, David, Panamá); Ericka Ferguson (Ministry of Health, Panamá); Brunhilde Schweiger (Robert Koch Institute, Unit Influenza and Other

Respiratory Viruses, National Reference Center for Influenza, Berlin, Germany).

Declaration of interests

AK has received funding reports grants from the US Centers for Disease Control and Prevention (CDC). AGE reports grants from the US National Institutes of Health during the conduct of the study. CC reports grants from Sanofi Pasteur, non-financial support from Parexel, grants from US CDC, and grants from the Program for Appropriate Technology in Health. HN reports grants and personal fees from the Bill & Melinda Gates Foundation, grants from WHO, grants from the Innovative Medicines Initiative, grants and personal fees from Sanofi Pasteur, personal fees from Janssen, grants from the National Institute of Health Research (NIHR), and grants and personal fees from the Foundation for Influenza Epidemiology. HC reports grants from the Bill & Melinda Gates Foundation, grants and personal fees from WHO, grants from the Innovative Medicines Initiative and grants from NIHR. TH reports personal fees from AstraZeneca, personal fees from Sanofi Pasteur, and personal fees from Seqirus. MAK reports having received consultant fees from Roche for work unrelated to this project. FPP reports grants and personal fees from Janssen, grants and personal fees from Novavax, personal fees from Bavarian Nordic, personal fees from Pfizer, personal fees from Sanofi, personal fees from Regeneron, and personal fees from Merck. SKS reports grants from WHO, grants from Bill & Melinda Gates Foundation, grants from GlaxoSmithKline, grants from Pfizer, and grants from Sanofi Pasteur. SAM reports grants and personal fees from BMGF, grants from Pfizer, grants from Sanofi, grants from GSK, and grants from Minervax. HJZ reports grants from Bill & Melinda Gates Foundation, grants from South Africa Medical Research Council, and grants from the National Research Foundation. JCM reports grants from Pfizer and grants from the Bill & Melinda Gates Foundation, and is an employee of Pfizer. All other authors declare no competing interests.

Acknowledgments

This study was funded by WHO and the Bill & Melinda Gates Foundation (OPP 1172551). HN and HC are members of the Respiratory Syncytial Virus Consortium in Europe, which has received funding from the Innovative Medicines Initiative 2 Joint Undertaking (116019) that receives support from the EU Horizon 2020 research and innovation programme and the European Federation of Pharmaceutical Industries and Associations. The community-based paediatric acute respiratory infection study (primary investigator: L-MY) in central Vietnam was supported by the Japan Initiative for Global Research Network on infectious Diseases from the Ministry of Education, Culture, Sport, Science & Technology in Japan, and Japan Agency for Medical Research and Development (JP18fm0108001). The data collection at the Guatemalan sites was supported by Cooperative Agreement Numbers U01-GH0000028 and U01-GH001003 funded by the US Centers for Disease Control and Prevention (CDC). The contents are solely the responsibility of the authors and do not necessarily represent the official views of the US CDC or the Department of Health and Human Services. XW and YL are supported by scholarships from China Scholarship Council. We thank Mark C Steinhoff, who led the maternal influenza immunisation trial in Nepal, for providing the influenza burden data among young infants. Dr Steinhoff sadly passed away when this manuscript was being drafted for publication. The findings and conclusions in this report are those of the authors and do not necessarily represent the official position of the US Centers for Disease Control and Prevention.

References

- WHO. WHO Media centre: Pneumonia. September 2016. <http://www.who.int/mediacentre/factsheets/fs331/en/> (accessed Sept 12, 2017).
- McAllister DA, Liu L, Shi T, et al. Global, regional, and national estimates of pneumonia morbidity and mortality in children younger than 5 years between 2000 and 2015: a systematic analysis. *Lancet Glob Health* 2019; 7: e47–57.
- Lukšić I, Kearns PK, Scott F, Rudan I, Campbell H, Nair H. Viral etiology of hospitalized acute lower respiratory infections in children under 5 years of age—a systematic review and meta-analysis. *Croat Med J* 2013; 54: 122–34.
- Lafond KE, Nair H, Rasooly MH, et al. Global role and burden of influenza in pediatric respiratory hospitalizations, 1982–2012: a systematic analysis. *PLoS Med* 2016; 13: e1001977.
- Nair H, Brooks WA, Katz M, et al. Global burden of respiratory infections due to seasonal influenza in young children: a systematic review and meta-analysis. *Lancet* 2011; 378: 1917–30.
- Hirve S, Lambach P, Paget J, Vandemaële K, Fitzner J, Zhang W. Seasonal influenza vaccine policy, use and effectiveness in the tropics and subtropics—a systematic literature review. *Influenza Other Respir Viruses* 2016; 10: 254–67.
- Palache A, Abelin A, Hollingsworth R, et al. Survey of distribution of seasonal influenza vaccine doses in 201 countries (2004–2015): the 2003 World Health Assembly resolution on seasonal influenza vaccination coverage and the 2009 influenza pandemic have had very little impact on improving influenza control and pandemic preparedness. *Vaccine* 2017; 35: 4681–86.
- Jorgensen P, Mereckiene J, Cotter S, Johansen K, Tsolova S, Brown C. How close are countries of the WHO European Region to achieving the goal of vaccinating 75% of key risk groups against influenza? Results from national surveys on seasonal influenza vaccination programmes, 2008/2009 to 2014/2015. *Vaccine* 2018; 36: 442–52.
- Ortiz JR, Perut M, Dumolard L, et al. A global review of national influenza immunization policies: analysis of the 2014 WHO/UNICEF Joint Reporting Form on immunization. *Vaccine* 2016; 34: 5400–05.
- Shi T, McAllister DA, O'Brien KL, et al. Global, regional, and national disease burden estimates of acute lower respiratory infections due to respiratory syncytial virus in young children in 2015: a systematic review and modelling study. *Lancet* 2017; 390: 946–58.
- WHO. Handbook: IMCI integrated management of childhood illness. Geneva: World Health Organization, 2005.
- Peterson J, Welch V, Losos M, Tugwell P. The Newcastle-Ottawa scale (NOS) for assessing the quality of nonrandomised studies in meta-analyses. 2011. www.ohri.ca/programs/clinical_epidemiology/oxford.asp (accessed Sept 1, 2017).
- UN Inter-agency Group for Child Mortality Estimation. Levels and trends in child mortality report 2015. New York: UNICEF, 2015.
- The World Bank. World Bank country and lending groups. <https://datahelpdesk.worldbank.org/knowledgebase/articles/906519> (accessed Feb 25, 2019).
- Sterne JA, White IR, Carlin JB, et al. Multiple imputation for missing data in epidemiological and clinical research: potential and pitfalls. *BMJ* 2009; 338: b2393.
- Rubin DB. Multiple imputation for nonresponse in surveys. New York: Wiley, 1987.
- Honaker J, King G, Blackwell M. Amelia II: a program for missing data. *J Stat Softw* 2011; 45: 47.
- Stijnen T, Hamza TH, Ozdemir P. Random effects meta-analysis of event outcome in the framework of the generalized linear mixed model with applications in sparse data. *Stat Med* 2010; 29: 3046–67.
- UN, Department of Economic and Social Affairs, Population Division. World population prospects: the 2017 revision. 2017. <https://population.un.org/wpp/Publications/> (accessed Feb 1, 2019).
- UN, Department of Economic and Social Affairs, Population Division. World population prospects: the 2015 revision. 2015. <https://population.un.org/wpp/Publications/> (accessed March 1, 2016).
- Cohen C, Walaza S, Moyes J, et al. Epidemiology of viral-associated acute lower respiratory tract infection among children <5 years of age in a high HIV prevalence setting, South Africa, 2009–2012. *Pediatr Infect Dis J* 2015; 34: 66–72.
- Klugman KP, Madhi SA, Ginsburg AS, Rodgers GL. The role of bacterial vaccines in the prevention of influenza mortality. *Lancet Glob Health* 2018; 6: e1268–69.
- Shrestha S, Foxman B, Weinberger DM, Steiner C, Viboud C, Rohani P. Identifying the interaction between influenza and pneumococcal pneumonia using incidence data. *Sci Transl Med* 2013; 5: 191ra84.
- Klugman KP, Chien YW, Madhi SA. Pneumococcal pneumonia and influenza: a deadly combination. *Vaccine* 2009; 27 (suppl 3): 9–14.

- 25 Joseph C, Togawa Y, Shindo N. Bacterial and viral infections associated with influenza. *Influenza Other Respir Viruses* 2013; 7 (suppl 2): 105–13.
- 26 International Vaccine Access Center (IVAC), Johns Hopkins Bloomberg School of Public Health. VIEW-hub. www.view-hub.org (accessed June 5, 2018).
- 27 UNAIDS. Global plan towards the elimination of new hiv infections among children by 2015 and keeping their mothers alive. Geneva: UNAIDS, 2011.
- 28 UNICEF. Elimination of mother-to-child transmission. July 2018. <https://data.unicef.org/topic/hiv/aids/emtct/> (accessed May 29, 2019).
- 29 Sankoh O, Byass P. The INDEPTH network: filling vital gaps in global epidemiology. *Int J Epidemiol* 2012; 41: 579–88.
- 30 US Centers for Disease Control and Prevention. Influenza-Associated Pediatric Mortality <https://gis.cdc.gov/grasp/fluview/pepdfdeath.html> (accessed March 20, 2019).
- 31 Nair H, Simões EA, Rudan I, et al. Global and regional burden of hospital admissions for severe acute lower respiratory infections in young children in 2010: a systematic analysis. *Lancet* 2013; 381: 1380–90.
- 32 R Core Team. R: A language and environment for statistical computing. Vienna: R Foundation for Statistical Computing, 2018.
- 33 Viechtbauer W. Conducting meta-analyses in R with the metafor package. *J Stat Softw* 2010; 36: 48.
- 34 Stevens GA, Alkema L, Black RE, et al. Guidelines for accurate and transparent health estimates reporting: the GATHER statement. *Lancet* 2016; 388: e19–23.
- 35 Elm Ev, Altman DG, Egger M, Pocock SJ, Gøtzsche PC, Vandenbroucke JP. Strengthening the reporting of observational studies in epidemiology (STROBE) statement: guidelines for reporting observational studies. *BMJ* 2007; 335: 806–08.
- 36 Ropero-Alvarez AM, El Omeiri N, Kurtis HJ, Danovaro-Holliday MC, Ruiz-Matus C. Influenza vaccination in the Americas: progress and challenges after the 2009 A(H1N1) influenza pandemic. *Hum Vaccin Immunother* 2016; 12: 2206–14.
- 37 Madhi SA, Klugman KP. A role for *Streptococcus pneumoniae* in virus-associated pneumonia. *Nat Med* 2004; 10: 811–13.
- 38 McAllister DA, Liu L, Shi T, et al. Global, regional, and national estimates of pneumonia morbidity and mortality in children younger than 5 years between 2000 and 2015: a systematic analysis. *Lancet Glob Health* 2019; 7: e47–57.
- 39 Troeger CE, Blacker BF, Khalil IA, et al. Mortality, morbidity, and hospitalisations due to influenza lower respiratory tract infections, 2017: an analysis for the Global Burden of Disease Study 2017. *Lancet Respir Med* 2019; 7: 69–89.
- 40 WHO. Situation updates—pandemic (H1N1) 2009. 2010. <https://www.who.int/csr/disease/swineflu/updates/en/> (accessed May 31, 2019).
- 41 Shi T, McLean K, Campbell H, Nair H. Aetiological role of common respiratory viruses in acute lower respiratory infections in children under five years: a systematic review and meta-analysis. *J Glob Health* 2015; 5: 010408.
- 42 Iuliano AD, Roguski KM, Chang HH, et al. Estimates of global seasonal influenza-associated respiratory mortality: a modelling study. *Lancet* 2018; 391: 1285–300.
- 43 Li L, Wong JY, Wu P, et al. Heterogeneity in estimates of the impact of influenza on population mortality: a systematic review. *Am J Epidemiol* 2017; 187: 378–88.
- 44 Cohen C, Walaza S, Treurnicht FK, et al. In- and out-of-hospital mortality associated with seasonal and pandemic influenza and respiratory syncytial virus in South Africa, 2009–2013. *Clin Infect Dis* 2018; 66: 95–103.
- 45 Assaf S, Horton L, Bornstein M, Pullum T. Levels and trends of maternal and child health indicators in 11 Middle East and North African Countries. Rockville: ICF International, 2017.
- 46 Noordam AC, Carvajal-Velez L, Sharkey AB, Young M, Cals JWL. Care seeking behaviour for children with suspected pneumonia in countries in sub-Saharan Africa with high pneumonia mortality. *PLoS One* 2015; 10: e0117919.
- 47 Pan American Health Organization/WHO. Immunization in the Americas: 2015 summary. Pan American Health Organization/World Health Organization: Washington DC, 2015.
- 48 Members of the Western Pacific Region Global Influenza Surveillance Response System, Dwyer D, Barr I, et al. Seasonal influenza vaccine policies, recommendations and use in the World Health Organization's Western Pacific Region. *Western Pac Surveill Response J* 2013; 4: 51–59.
- 49 Palache A, Oriol-Mathieu V, Abelin A, Music T. Seasonal influenza vaccine dose distribution in 157 countries (2004–2011). *Vaccine* 2014; 32: 6369–76.
- 50 Pan American Health Organization/WHO. Immunization in the Americas: 2016 summary. Pan American Health Organization/World Health Organization: Washington DC, 2016.
- 51 Rolfes MA, Flannery B, Chung JR, et al. Effects of influenza vaccination in the United States during the 2017–2018 influenza season. *Clin Infect Dis* 2019; 69: 1845–53.
- 52 Nunes MC, Cutland CL, Jones S, et al. Efficacy of maternal influenza vaccination against all-cause lower respiratory tract infection hospitalizations in young infants: results from a randomized controlled trial. *Clin Infect Dis* 2017; 65: 1066–71.
- 53 Omer SB, Clark DR, Aqil AR, et al. Maternal influenza immunization and prevention of severe clinical pneumonia in young infants: analysis of randomized controlled trials conducted in Nepal, Mali and South Africa. *Pediatr Infect Dis J* 2018; 37: 436–40.
- 54 Kittikraisak W, Suntarattiwong P, Levy J, et al. Influenza vaccination coverage and effectiveness in young children in Thailand, 2011–2013. *Influenza Other Respir Viruses* 2015; 9: 85–93.
- 55 Lu PJ, Santibanez TA, Williams WW, et al. Surveillance of influenza vaccination coverage—United States, 2007–08 through 2011–12 influenza seasons. *MMWR Surveill Summ* 2013; 62: 1–28.
- 56 Tapia MD, Sow SO, Tamboura B, et al. Maternal immunisation with trivalent inactivated influenza vaccine for prevention of influenza in infants in Mali: a prospective, active-controlled, observer-blind, randomised phase 4 trial. *Lancet Infect Dis* 2016; 16: 1026–35.
- 57 Nunes MC, Cutland CL, Jones S, et al. Duration of infant protection against influenza illness conferred by maternal immunization: secondary analysis of a randomized clinical trial. *JAMA Pediatr* 2016; 170: 840–47.
- 58 Mina MJ, Klugman KP. The role of influenza in the severity and transmission of respiratory bacterial disease. *Lancet Respir Med* 2014; 2: 750–63.
- 59 CHAMPS. Child Health and Mortality Prevention Surveillance. <https://champshealth.org/> (accessed Oct 6, 2019).