

Neurocase

The Neural Basis of Cognition

ISSN: 1355-4794 (Print) 1465-3656 (Online) Journal homepage: <https://www.tandfonline.com/loi/nncs20>

A cognitive chameleon: Lessons from a novel *MAPT* mutation case

Yuying Liang, Elizabeth Gordon, Jonathan Rohrer, Laura Downey, Rohan de Silva, Hans Rolf Jäger, Jennifer Nicholas, Marc Modat, M. Jorge Cardoso, Colin Mahoney, Jason Warren, Martin Rossor, Nick Fox & Diana Caine

To cite this article: Yuying Liang, Elizabeth Gordon, Jonathan Rohrer, Laura Downey, Rohan de Silva, Hans Rolf Jäger, Jennifer Nicholas, Marc Modat, M. Jorge Cardoso, Colin Mahoney, Jason Warren, Martin Rossor, Nick Fox & Diana Caine (2014) A cognitive chameleon: Lessons from a novel *MAPT* mutation case, *Neurocase*, 20:6, 684-694, DOI: [10.1080/13554794.2013.826697](https://doi.org/10.1080/13554794.2013.826697)

To link to this article: <https://doi.org/10.1080/13554794.2013.826697>



© 2013 The Author(s). Published by Taylor & Francis.



Published online: 02 Sep 2013.



[Submit your article to this journal](#)



Article views: 455



[View related articles](#)



[View Crossmark data](#)



Citing articles: 6 [View citing articles](#)

A cognitive chameleon: Lessons from a novel *MAPT* mutation case

Yuying Liang¹, Elizabeth Gordon¹, Jonathan Rohrer¹, Laura Downey¹, Rohan de Silva², Hans Rolf Jäger³, Jennifer Nicholas^{1,4}, Marc Modat^{1,5}, M. Jorge Cardoso^{1,5}, Colin Mahoney¹, Jason Warren¹, Martin Rossor¹, Nick Fox¹, and Diana Caine⁶

¹Dementia Research Centre, Department of Neurodegenerative Diseases, UCL Institute of Neurology, London WC1N 3BG, UK

²Reta Lila Weston Institute, Department of Molecular Neuroscience, UCL Institute of Neurology, London WC1N 1PJ, UK

³Lysholm Department of Neuroradiology, National Hospital for Neurology and Neurosurgery, London WC1N 3BG, UK

⁴Department of Medical Statistics, London School of Hygiene and Tropical Medicine, Keppel Street, London WC1E 7HT, UK

⁵Centre for Medical Image Computing, UCL, Gower Street, London WC1E 6BT, UK

⁶Department of Neuropsychology, National Hospital for Neurology and Neurosurgery, London WC1N 3BG, UK

We report a case of frontotemporal dementia caused by a novel *MAPT* mutation (Q351R) with a remarkably long amnesic presentation mimicking familial Alzheimer's disease. Longitudinal clinical, neuropsychological and imaging data provide convergent evidence for predominantly bilateral anterior medial temporal lobe involvement consistent with previously established neuroanatomical signatures of *MAPT* mutations. This case supports the notion that the neural network affected in *MAPT* mutations is determined to a large extent by the underlying molecular pathology. We discuss the diagnostic significance of anomia in the context of atypical amnesia and the impact of impaired episodic and semantic memory systems on autobiographical memory.

Keywords: Episodic memory; Semantic memory; Familial Alzheimer's disease; *MAPT* mutations; Frontotemporal dementia; Autobiographical memory; Brain networks.

Frontotemporal dementia (FTD) is a common cause of young onset dementia (Harvey, Skelton-Robinson, & Rossor, 2003; Ratnavalli, Brayne, Dawson, & Hodges, 2002). Around a third to a

half of patients with FTD have a family history with approximately 10–40% following an autosomal dominant inheritance pattern (Bird et al., 2003; Chow, Miller, Hayashi, & Geschwind, 1999; Rohrer

Address correspondence to Professor Nick Fox, Dementia Research Centre, Department of Neurodegenerative Diseases, UCL Institute of Neurology, Queen Square, London WC1N 3BG, UK. (E-mail: n.fox@ucl.ac.uk).

We thank the patient and the family for their participation. We thank Professor Lisa Cipolotti and other colleagues in the neuropsychology department at the National Hospital for Neurology and Neurosurgery for their help in assessing the patient. We thank Kelvin Leung for his assistance with the fluid registration and total intracranial volume estimation. We also thank Susie Henley for her review of the manuscript.

The Dementia Research Centre is an Alzheimer's Research UK Co-ordinating Centre and has also received equipment funded by Alzheimer's Research UK and Brain Research Trust. This project was funded by ARUK and supported by the NIHR Queen Square Dementia BRU.

© 2013 The Author(s). Published by Taylor & Francis.

This is an Open Access article distributed under the terms of the Creative Commons Attribution License (<http://creativecommons.org/licenses/by/3.0/>), which permits unrestricted use, distribution, and reproduction in any medium, provided the original work is properly cited. The moral rights of the named author(s) have been asserted.

et al., 2009). *MAPT*, *PGN*, and *C9ORF72* mutations have been identified as three major genetic causes. Studying patients with genetic forms of FTD can reveal potential relationships between specific molecular pathologies and clinical phenotypes which could in turn be helpful in elucidating the underlying disease mechanisms. *MAPT* mutations typically present with behavioral changes with subsequent emergence of semantic deficits, memory decline, and motor features (Rohrer & Warren, 2011). Occasionally one of the nonbehavioral features predominates, resulting in patients receiving an alternative diagnosis initially. We report a patient who presented with a remarkably long history of amnesia with early features of semantic loss followed later by behavioral changes.

CASE DESCRIPTION

CW (initials changed to preserve anonymity) is a right-handed lady who was born at term and reached normal developmental milestones. She completed a university degree and worked at a relatively senior level in the public sector. In her mid-40s, her work performance deteriorated. Around the same time, she became irritable and argumentative leading to strained relationships with her partner and children. With hindsight, her now former partner reports a subtle decline in her memory from her late thirties.

She was first seen in our cognitive disorders clinic at the age of 49 years old, with a principal complaint of poor memory. She was forgetting appointments and had started to keep a diary. She had been subjected to three separate capability assessments at work. In addition to relationship difficulties, there were also financial problems. She had had some depressive symptoms including low mood, an exaggeration of premorbid pessimism, and diminished interest and drive. General and neurological examinations were normal.

As detailed in Table 1, the first neuropsychological assessment showed a mild reduction in general intellectual function (FSIQ108 compared with NART-estimated FSIQ 118) (Nelson, 1982; Wechsler, 1981) with impaired performance on both verbal and visual versions of the recognition memory test (RMT both <5th percentile) (Warrington, 1984). Confrontation naming was poor (graded naming test (GNT): 5th percentile; Oldfield naming test: 25–50th percentile) (McKenna & Warrington, 1983; Oldfield & Wingfield, 1965) which, together with slightly reduced category fluency (animal names: 25th percentile) (Spree & Strauss, 1998), hinted at early semantic impairment, especially in comparison with preserved phonemic fluency (“s”: >90th percentile) (Spree & Strauss, 1998). The latter indicated preserved executive function as did sound cognitive estimates (50th percentile) (Shallice & Evans, 1978). Visual processing was intact (VOSP

TABLE 1
Select neuropsychology results at baseline, 8-year and 13-year follow-up visits

Session	Full-scale IQ	Recognition memory test (words)	Recognition memory test (faces)	WMS-delayed story recall	Rey complex figure recall	
					Concrete	Abstract
Baseline	108	36 (<5%)	35 (<5%)	–	–	–
8 yr	102	32 (<5%)	20 (<5%)	0 (<1%)	–	0 (<1%)
13 yr	86	27 (<5%)	25 (<5%)	0 (<1%)	–	0 (<1%)
Session	Graded naming test	Famous faces	Category fluency	Letter fluency	Synonym-matching	
					Concrete	Abstract
Baseline	5 (5%)	–	17 (25%)	21 (>90%)	–	–
8 yr	2 (<1%)	2	9 (<10%)	17 (50–70%)	–	–
13 yr	0 (<1%)	0	4 (<1%)	15 (44%)	16 (<1%)	18 (10%)
Session	Trail making test B	Stroop inhibition	Cognitive estimate			
Baseline	–	–	3 (50%)			
8 yr	140'' (10–25%)	20–24%	–			
13 yr	146'' (10–25%)	25–50%	15 (<1%)			

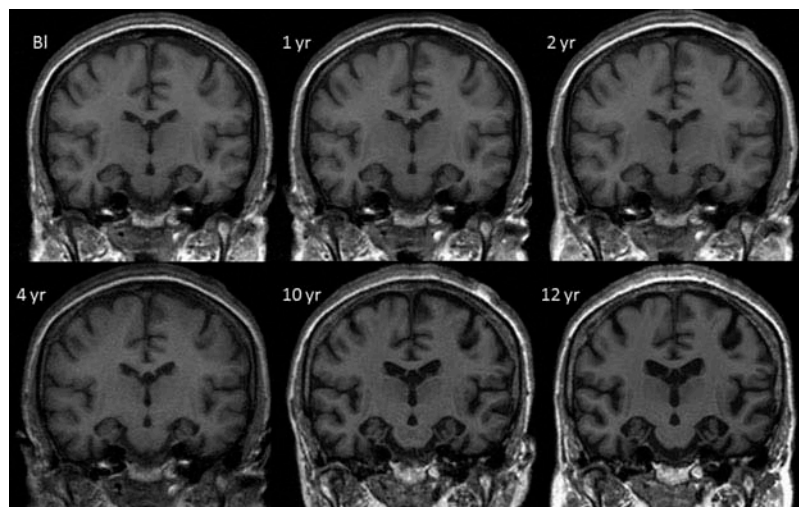


Figure 1. Mid-temporal axial volumetric T1-weighted MR images acquired at initial presentation and subsequent repeat visits (1-, 2-, 4-, 10-, and 12-year follow-up). All repeat images have undergone 12 degrees of freedom registration to spatially align them to the baseline (Bl).

incomplete letters: >5th percentile) (Warrington & James, 1991). Notwithstanding some reduced scores, inconsistencies were noted between poor naming, fluent spontaneous speech, and preserved vocabulary score on the WAIS-R; and between poor memory scores and her ability to provide details regarding her present circumstances. In addition, she showed no implicit learning on the Gollin figures test (Gollin, 1960). These factors, in the context of her relatively young age and reported changes in mood, suggested depression and additional functional component as possible causes for her cognitive problems. However, her MRI brain scan (Figure 1) showed small medial temporal lobes for age.

DISEASE PROGRESSION

The clinical impression that depression was a significant contributor to her cognitive complaints was revised 2 years later when, at the age of 51 years old, CW's memory had deteriorated significantly and she had had to give up work. She would now frequently forget the previous day's events and had difficulty finding familiar places while driving. Treatment with Citalopram for low mood and anxiety had had no impact on her cognitive function. At this point, a more detailed family history emerged. CW's father had developed apathy at the age of 39 years old followed by progressive memory

decline. He died at the age of 55 years old. Two of his three siblings were similarly affected.

Further investigations were performed. Cerebrospinal fluid was normal for cell counts, protein and glucose. S100 was 0.96 ng/ml (reference range: 99% below 0.55 ng/ml). Oligoclonal bands were negative in the CSF and serum. Tau and A β_{42} levels were not available. EEG demonstrated normal alpha rhythm with no epileptic activity. Repeat MRI brain appeared to show stable intracranial appearances but was now reported to be consistent with Alzheimer's disease (AD) (Figure 1). A provisional diagnosis of AD was made. On account of the strong family history, she was screened for mutations in the *PSEN1*, 2 and *APP* genes which were all negative.

Continuing cognitive deterioration followed in the succeeding years such that by 57 years of age, 8 years after the initial presentation, she required a support worker to assist with daily tasks. In addition to poor memory, occasional word-finding difficulties, the onset of a sweet tooth, and some weight gain were reported. She tended to oversleep, even during the day. She was no longer oriented in time. There was further decline in naming (GNT: 2/30, <1st percentile; Oldfield Naming test: 16/30, 10–25th percentile) and semantic fluency (animal names: <10th percentile) with a milder deterioration in phonemic fluency (50–70th percentile). There was mild executive impairment (trail making part B: 10–25th percentile; stroop inhibition: 20–24th percentile) (Table 1). At this time, the

profile comprising profound episodic and semantic memory loss together with milder executive problems was still thought to be consistent with a diagnosis of early onset AD. There was now the intimation of behavioral changes including some disinhibition on the letter fluency task in the form of sex-related words in addition to the change in eating habits.

Clear behavioral symptoms emerged when CW was 61 years old. She had become disinhibited and frequently gave strangers her phone number and address. She was increasingly apathetic and would lie in bed all day unless prompted and needed encouragement even to attend social functions that she continued to enjoy. She had become less empathic. Her intake of sweet food had increased and she had developed musicophilia. The latter took the form of listening to certain types of music continually. She was started on Donepezil to no great effect.

At this point, her baseline MRI and 4- and 10-year repeat scans were spatially aligned using a 12 degrees of freedom (d.o.f.) registration as part of her radiological review. This procedure allows regions of cortical change between timepoints to be quantified using the boundary shift integral (BSI) and aids in visual assessment of volume loss (Freeborough & Fox, 1997; Leung et al., 2010). Review of these registered images indicated a progression in the anterior–posterior gradient of volume loss across the medial temporal lobes with disproportionate loss anteriorly. This raised the possible diagnosis of familial FTD due to a tau mutation. She underwent another lumbar puncture and the CSF analysis revealed a tau level of 429 pg/ml (suggestive of neurodegeneration) (local reference range: abnormal >400 pg/ml) and an A β ₄₂ level of 723 pg/ml (non-AD like) (local reference range: AD profile if <300 pg/ml). Screening for *MAPT* mutations revealed a novel mutation in exon 12 with a single heterozygous nucleotide change c.1052A >G.

Presently, 13 years after initial presentation, CW is profoundly amnesic. She is very repetitive and her conversation is impoverished in content. She gives the same highly stereotyped and very restricted account of her childhood to everyone she meets.

The latest neuropsychology assessment at the age of 62 years showed general cognitive decline (WASI-II FSIQ 86) (Wechsler, 2011). Working memory as measured by digit span remained within normal limits scaled score 10) (Wechsler, 1987). Recognition memory was at chance. She had no

TABLE 2

Autobiographical memory interview at the age of 61 years old (12-year follow-up visit)

Total score summary	Personal semantic	Autobiographical incidents
Section A childhood	5.5/21	0/9
Section B early adult life	10/21	2/9
Section C recent Life	4.5/21	0/9
	20/63 (32%)	2/27 (7%)
Cut-off	<47	<12

recall of a short story in immediate or delayed recall conditions. Naming scores were progressively lower across all tests (GNT now 0/30, Boston Naming Test 18/30) (Kaplan, Goodglass, & Weintraub, 1983), with worsening semantic deterioration (animal names: 4, vegetable names: 0) also a feature. Phonemic fluency was further reduced but executive function *per se* remained otherwise relatively stable. On formal examination, recall of both personal semantic and autobiographic incidents was impaired (Kopelman, Wilson, & Baddeley, 1989), the latter more dramatically so (Table 2). Notably, posterior function remained relatively intact (VOSP object decision: >5% cut-off; complex figure copy: 25–50%). The profile thus remained one of profound episodic and semantic memory loss with less marked executive dysfunction but now in the context of striking behavioral change.

Neurologically she now has evidence of mild asymmetric parkinsonism and pyramidal signs. There is a mild resting tremor in her left hand associated with bradykinesia. She has pathologically brisk reflexes in her right arm and leg, Hoffman's sign in her right hand and an extensor right planter. Orofacial and limb praxis are normal.

NEUROIMAGING

As noted earlier, the first MRI brain scan at presentation (aged 49) was thought to show bilateral medial temporal atrophy. More recent blinded radiological review of these images also reported frontal and parietal lobe atrophy (Figure 2). Subsequent longitudinal MRI scans demonstrated progressive global cerebral atrophy with particularly striking changes in the anterior, inferior, and medial aspects of the temporal lobes (Figures 1 and 2).

The pattern of these early temporal lobe changes are more clearly demonstrated by whole brain fluid registration (Figure 3). This method involves nonlinear warping of each scan to match the baseline scan, generating a deformation field that

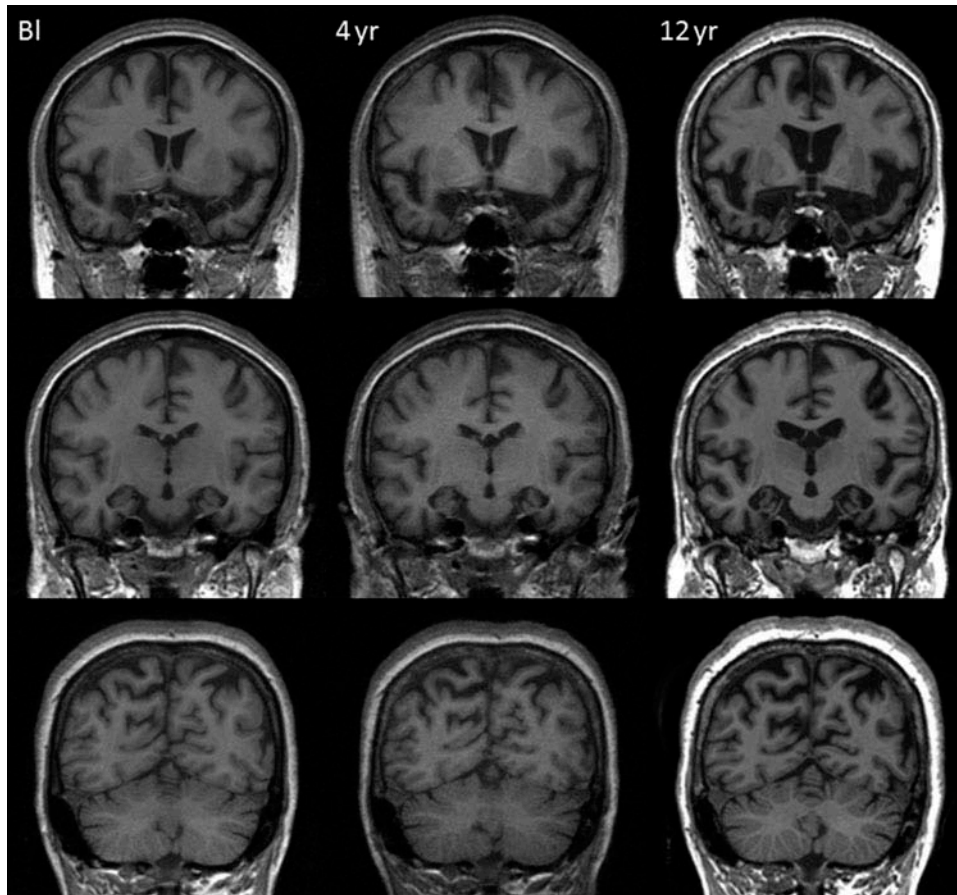


Figure 2. Spatially aligned coronal MR images from baseline (BI), 4-year and 12-year follow-up visits demonstrating progressive atrophy affecting frontal, temporal, and parietal lobes.

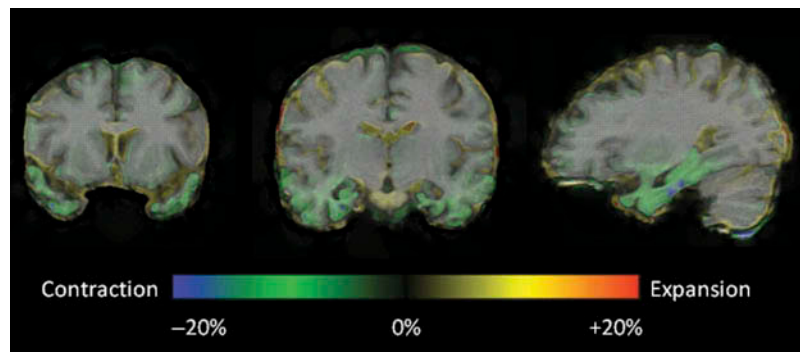


Figure 3. Representative coronal and sagittal MRI slices with voxel deformation mapping overlay, over an interval of 4 years post-presentation. These demonstrate relatively focal bilateral contraction (green/blue = volume loss) in the temporal lobes, particularly involving the temporal poles, parahippocampal and fusiform gyri, with an anterior–posterior gradient. [To view this figure in colour, please see the online version of this Journal.]

allows visualization of voxel-level expansion and contraction (Freeborough & Fox, 1998). These images show clear evidence of progressive atrophy in the temporal lobes, frontal gyri, and the insular cortices early in the disease process,

before it was detectable during routine radiological assessment.

Given the novel mutation and the atypical clinical presentation, we compared CW's scans with those of *9MPT* cases in our FTD cohort and

13 healthy controls matched for age and gender. All images underwent non-uniformity correction, manual whole-brain delineation, and affine 12 d.o.f. registration to quantify longitudinal whole brain change. Hippocampal volumes were derived using a template based method for automated segmentations (Cardoso et al., 2013) and used to investigate longitudinal hippocampal volume change for CW and the nine *MAPT* mutation cases with longitudinal imaging. We generated a head size measure by estimating total intracranial volumes (TIV) from the summation of the volumes of gray matter, white matter, and cerebral spinal fluid using the segmentation toolbox in Statistical Parametric Mapping version 8 (Wellcome Trust Centre for Neuroimaging, London, UK, <http://www.fil.ion.ucl.ac.uk/spm>; Leung et al., 2010).

CW's early global longitudinal profile appeared very stable with volumetric analysis revealing whole-brain volumes that ranged from 1017 mm³ (75.9% of TIV) at baseline to 1004 mm³ (75.0% of TIV) at 4-year follow-up (Figure 4). Between these two time points, her average annual loss of 0.28% of baseline whole-brain volume was comparable to our controls (mean = 0.27%, SD = 0.32) $T(12) = 0.05$, $p = .96$ (Crawford & Howell, 1998) and was also consistent with previously published rates for healthy controls (mean 0.32%, 95% CI 0.1–0.54%) (Scahill et al., 2003). Compared to the other *MAPT*

mutation cases, her whole-brain atrophy rate at this early stage was toward the lower end of the range but was not significantly different (mean = 1.44%, SD = 0.76, range = 0.20–2.53%) $T(8) = -1.45$, $p = .19$. When compared to three of the *MAPT* cases of similar disease duration, CW's whole-brain atrophy rate was again in the lower range. Her annualized hippocampal rate of change over the same time period (3.35%) was significantly higher than our controls (mean = 0.30%, SD = 1.30) $T(12) = 2.26$, $p = .04$ and was toward the higher end of the range compared to the other *MAPT* mutation cases but again not significantly different (mean = 2.16%, SD = 2.25, range = -1.66–5.40%) $T(8) = 0.50$, $p = .63$ (Figure 5). Her hippocampal atrophy rate, however, was similar to those of the three *MAPT* cases of comparable disease duration. Therefore, CW's hippocampal and whole-brain atrophy rates were not atypical compared to other *MAPT* mutation cases in our FTD cohort.

DISCUSSION

Here we report a novel *MAPT* mutation case in exon 12 with a predominantly amnesic presentation masquerading as AD initially. The mutation causes a glutamine to arginine substitution

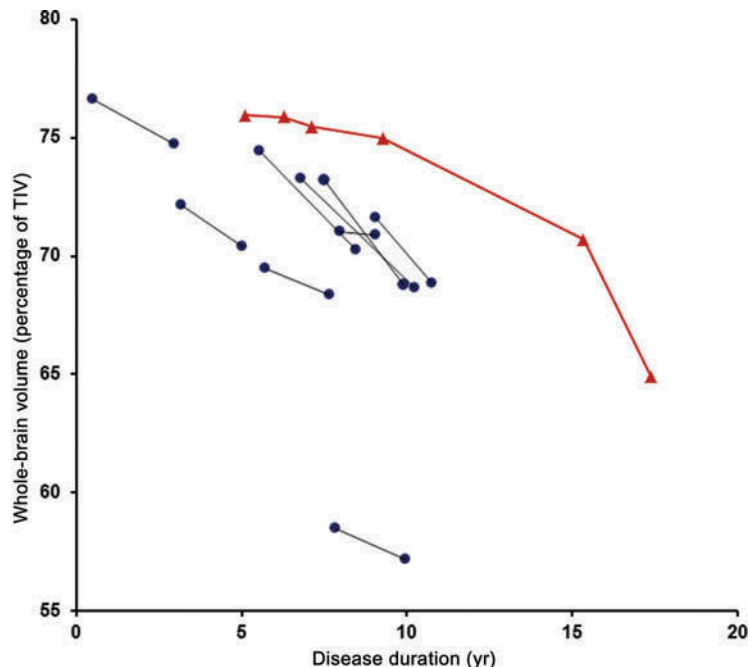


Figure 4. Longitudinal whole brain volumes (as percentage of total intracranial volume) for • *MAPT* mutation cases and ▲ CW against disease duration. [To view this figure in colour, please see the online version of this Journal.]

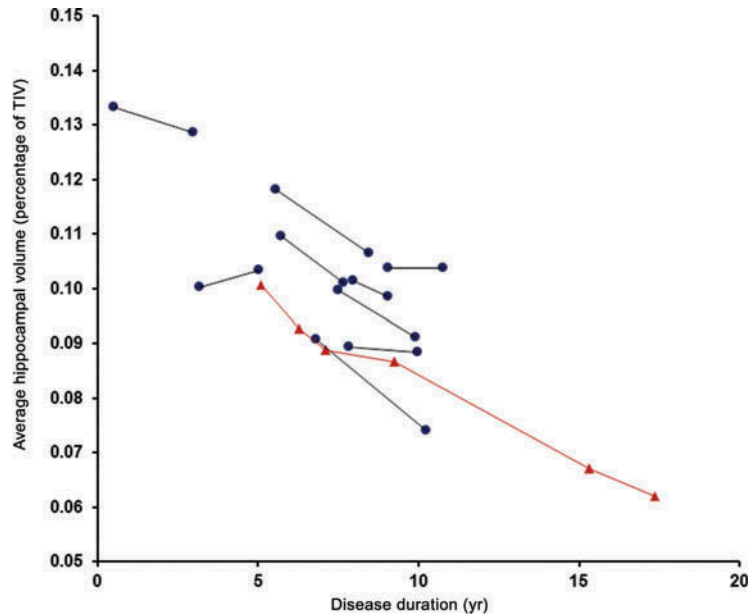


Figure 5. Longitudinal average hippocampal volumes (as percentage of total intracranial volume) for ● *MAPT* mutation cases and ▲ CW against disease duration. [To view this figure in colour, please see the online version of this Journal.]

at codon 351 (Q351R) in the fourth microtubule repeat domain with a PolyPhen-2 score of 0.891, i.e. possibly damaging (Adzubei et al., 2010). The substitution is likely to lead to reduced capacity of tau protein to bind to microtubules and, or increased fibrillogenicity (Hong et al., 1998; Spillantini, Van Swieten, & Goedert, 2000). Given the long duration of the case and the suggestion that disease severity of *MAPT* mutations are in part related to the relative reduction of the ability of the tau protein to interact with microtubules (Spillantini et al., 2000; Van Swieten et al., 1999), *in vivo* studies assessing tau functions in this mutation would be particularly instructive.

The key clinical features of *MAPT* mutations are behavioral changes, semantic impairment, episodic memory decline, and parkinsonism (Rohrer & Warren, 2011). Although behavioral changes are the prototypical presenting symptoms of *MAPT* cases (Rohrer et al., 2011), any of the other non-behavioral features may lead (Doran et al., 2007; Ishizuka, Nakamura, Ichiba, & Sano, 2011; Larner, 2008; Rohrer et al., 2011). When episodic memory impairment is prominent, it is not uncommon for AD to be diagnosed. This has been reported for mutations involving both the coding regions (Mirra et al., 1999) (Tolboom et al., 2010) and the intronic regions (Doran et al., 2007; Larner, 2008). As highlighted in a recent review (Hornberger & Piguet, 2012), the magnitude of anterograde

memory deficits in FTD can be very similar to that in AD. Our case illustrates this point and the importance of screening for *MAPT* mutations in families with an autosomal dominant history of an amnesic syndrome where mutations for familial AD have proven negative (Larner, 2008).

It is well established that the same *MAPT* mutation can give rise to different clinical phenotypes. For example, the P301L mutation has been reported to present with amnesia, behavioral change, semantic loss, or motor syndromes (Donker Kaat et al., 2009; Ishizuka et al., 2011; Mirra et al., 1999; Van Swieten et al., 1999). It has led to the suggestion that molecular pathologies do not necessarily specify a precise initial neuroanatomical locus of damage (Rohrer et al., 2010); other factors such as developmental vulnerability or environmental factors may possibly influence this (Mesulam, 2009). It remains to be seen whether other clinical phenotypes of the Q351R mutation would emerge in due course.

A significant aspect of the current case was the initial diagnostic difficulty. During the early years, there was a suggestion of a significant functional component to CW's presentation. It was thought that her very poor performance on tests of memory and confrontation naming were inconsistent with her fluent, articulate speech and reasonable account of day-to-day events. However, as naming deficits are very rarely a cognitive correlate

of depression (Emery & Breslau, 1989), in retrospect, her reduced confrontation naming—present even at the initial assessment—should have pointed to a neurogenic cognitive impairment suggesting early subtle semantic impairment which perhaps should have raised the suspicion of a non-AD diagnosis at the time. As mentioned earlier, semantic impairment is a frequent finding in cases of *MAPT* mutations (Rohrer & Warren, 2011; Seelaar et al., 2008) and can be present early or even in the presymptomatic phase of the illness (Garrard & Carroll, 2005; Ishizuka et al., 2011). Early profound anomia was also present in a family with an intron 10 + 16 mutation, many of whom presented with amnesic symptoms (Doran et al., 2007). Other evidence of semantic degradation in CW, including reduced semantic fluency and poor synonym-matching scores, emerged over time (Table 1). Interestingly, apart from the observation of poverty of speech content, no major concern with her language function has been raised at any time.

Similarly CW's poor performance on the retention trials of the Gollin figure test was seen as supportive evidence of a significant functional component as it was assumed that even amnesic patients would usually show some implicit learning (Warrington & Weiskrantz, 1968). The most likely explanation is that her profoundly impaired episodic memory system, together with weakened support from the visual semantic system resulted in an inability to support such implicit learning. There is little doubt that other apparent discrepancies between her scores on memory tests and her clinical presentations were over emphasized. This illustrates the difficulty in making such judgements based on relatively brief clinical contact.

Both MRI and CSF played a role in making the eventual diagnosis. Progressive medial temporal lobe atrophy along an anterior–posterior gradient provided a useful diagnostic pointer (Chan et al., 2001). Arguably, MR techniques such as fluid registration allow more focal measurements and regional visualization so could potentially detect these changes before routine radiological review. At the time of initial investigation and CSF examination, tau and A β ₄₂ protein assays were not available. When reinvestigation—10 years later—was prompted by the atypical clinical course and the MRI findings, these assays had been established and lent support to a non-AD pathology.

For the last few years, CW has given a very circumscribed and highly stereotyped account of

her autobiographical history. Her extremely limited repertoire of autobiographical accounts is unlike that typically seen in patients with either AD or semantic dementia (SD) (Graham & Hodges, 1997; Leyhe, Müller, Milian, Eschweiler, & Saur, 2009) and is likely to be the result of an interaction of her impaired episodic and semantic memory systems with additional contribution from impaired strategic retrieval mechanisms (Matuszewski et al., 2006). Autobiographical memory (AbM) has both an episodic component and a personal semantic memory component (Tulving, 1993). In AD, personal semantics scores correlate with bilateral anterior and posterior lateral temporal lobe volume and episodic AbM scores correlate with combined atrophy in bilateral medial temporal lobes and anterior lateral temporal neocortex (Gilboa et al., 2005). The impairment CW shows in both components of AbM is consistent with the neuroimaging findings of severe temporal lobe atrophy involving the anterior and medial aspects but also, to a lesser extent, the lateral temporal cortex. In terms of a temporal gradient, patients with early AD typically remember remote personal facts and incidents better than recent ones (maintenance of the reminiscence bump and absence of the “recency” effect) (Morris & Mograbi, 2013). The opposite pattern is seen in early SD (Graham & Hodges, 1997; Hou, Miller, & Kramer, 2005; Irish et al., 2011) although as disease progresses, memory for all time periods is degraded (Matuszewski et al., 2009). Interestingly, CW appeared to have slightly better recall of the AbM for early adulthood compared with childhood and recent life, namely a relatively preserved reminiscence bump, but with no other temporal gradient in either direction. The autobiographical memory interview (Kopelman et al., 1989) used in our study has a free recall and a general probing condition. A more detailed procedure such as one that employs specific probes could potentially yield more informative findings (Irish et al., 2011). Systematic study of the organization of AbM in patients with genetic FTD is needed to shed further light on this relatively little investigated area.

CW's serial volumetric MR images over a 12-year period and fluid registration of her MRI brain scans demonstrate a relatively symmetrical pattern of atrophy affecting the frontal, temporal and, to a lesser extent, parietal lobes with particular emphasis on the anterior, medial, and inferior aspects of the temporal lobes (Figures 1–3). This concurs with previous MRI findings of bilateral anteromedial

temporal lobe involvement in *MAPT* mutation (Rohrer et al., 2010, 2011; Whitwell et al., 2009, 2012). In contrast with Whitwell et al.'s findings that mutations which affect the structure of the tau protein preferentially involve the lateral temporal lobes with relative sparing of the medial temporal lobe (Whitwell et al., 2009), for this novel mutation with putative defect in tau structure, the medial temporal lobes are more atrophied.

The remarkably slow progression of this case is instructive for the discussion on FTD phenocopy syndrome (Kipps, Hodges, & Hornberger, 2010; Piguet, Hornberger, Mioshi, & Hodges, 2011) and suggests a need for caution in the diagnosis in such cases. On the basis of the slow pace of progression, similar cases, particularly those led by behavioral problems might have been diagnosed as phenocopies. As noted earlier, compared with other *MAPT* cases, during the early years, CW's whole-brain atrophy rate was toward the lower end of the range whilst her hippocampal atrophy rate was toward the higher end. This could suggest that the overall rate of clinical progression may be better correlated with the extent to which pathology spreads outside the initial focus. A caveat of making such comparisons with other *MAPT* mutation cases is that we were limited by the number of cases in the local FTD cohort with comparable disease duration.

In conclusion, despite the initial atypical presentation of the case, subsequent development of semantic deficits and behavioral changes as well as the MRI atrophy patterns are consistent with existing literature on *MAPT* mutations. This supports the hypothesis that in *MAPT* mutations, although the initial target of the disease may be stochastic, the subsequent propagation is likely to conform to a specific, intrinsic brain network according to the underlying molecular pathology (Warren, Rohrer, & Hardy, 2012).

This case also illustrates a number of clinical and neuropsychological issues: the significance of anomia in the context of atypical amnesia in pointing toward a non-AD diagnosis; the value of searching for a *MAPT* mutation in cases of early onset dementia characterized by amnesia and relevant family history with negative familial AD mutations; the complexity in differentiating organic and functional amnesia and the unique effect on autobiographical memory as a result of an interaction between damaged episodic and semantic memory systems.

Original manuscript received 13 March 2013

Revised manuscript received 17 June 2013

Revised manuscript accepted 06 August 2013

First published online 29 August 2013

REFERENCES

- Adzhubei, I., Schmidt, S., Peshkin, L., Ramensky, V., Gerasimova, A., Bork, P., . . . Sunyaev, S. R. (2010). A method and server for predicting damaging missense mutations. *Nature Methods*, *7*, 248–249. doi:10.1038/nmeth0410-248.A
- Bird, T., Knopman, D., VanSwieten, J., Rosso, S., Feldman, H., Tanabe, H., . . . Hutton, M. (2003). Epidemiology and genetics of frontotemporal dementia/Pick's disease. *Annals of Neurology*, *54*, S29–S31. doi:10.1002/ana.10572
- Cardoso, M. J., Leung, K., Modat, M., Keihaninejad, S., Cash, D., Barnes, J., . . . Ourselin, S. (2013). Alzheimer's disease neuroimaging initiative. STEPS: Similarity and truth estimation for propagated segmentations and its application to hippocampal segmentation and brain parcellation. *Medical Image Analysis*, *17*, 671–684. doi:10.1016/j.media.2013.02.006
- Chan, D., Fox, N. C., Scahill, R. I., Crum, W. R., Whitwell, J. L., Leschziner, G., . . . Rossor, M. N. (2001). Patterns of temporal lobe atrophy in semantic dementia and Alzheimer's disease. *Annals of Neurology*, *49*, 433–442.
- Chow, T. W., Miller, B. L., Hayashi, V. N., & Geschwind, D. H. (1999). Inheritance of frontotemporal dementia. *Archives of Neurology*, *56*, 817–822.
- Crawford, J. R., & Howell, D. C. (1998). Comparing an individual's test score against norms derived from small samples. *The Clinical Neuropsychologist (Neuropsychology, Development and Cognition: Section D)*, *12*, 482–486. doi:10.1076/clin.12.4.482.7241
- Donker Kaat, L., Boon, A. J. W., Azmani, A., Kamphorst, W., Breteler, M. M. B., Anar, B., . . . van Swieten, J. C. (2009). Familial aggregation of Parkinsonism in progressive supranuclear palsy. *Neurology*, *73*, 98–105. doi:10.1212/WNL.0b013e3181a92bcc
- Doran, M., Du Plessis, D. G., Ghadiali, E. J., Mann, D. M., Pickering-Brown, S., & Lerner, A. J. (2007). Familial early-onset dementia with tau intron 10 + 16 mutation with clinical features similar to those of Alzheimer disease. *Archives of Neurology*, *64*, 1535–1539. doi:10.1001/archneur.64.10.1535
- Emery, O. B., & Breslau, L. D. (1989). Language deficits in depression: Comparisons with SDAT and normal aging. *Journal of Gerontology*, *44*, M85–M92.
- Freeborough, P. A., & Fox, N. C. (1997). The boundary shift integral: An accurate and robust measure of cerebral volume changes from registered repeat MRI. *IEEE Transactions on Medical Imaging*, *16*, 623–629. doi:10.1109/42.640753

- Freeborough, P. A., & Fox, N. C. (1998). Modeling brain deformations in Alzheimer disease by fluid registration of serial 3D MR images. *Journal of Computer Assisted Tomography*, *22*, 838–843.
- Garrard, P., & Carroll, E. (2005). Presymptomatic semantic impairment in a case of fronto-temporal lobar degeneration associated with the +16 mutation in MAPT. *Neurocase*, *11*, 371–383. doi:10.1080/13554790500205421
- Gilboa, A., Ramirez, J., Köhler, S., Westmacott, R., Black, S. E., & Moscovitch, M. (2005). Retrieval of autobiographical memory in Alzheimer's disease: Relation to volumes of medial temporal lobe and other structures. *Hippocampus*, *15*, 535–550. doi:10.1002/hipo.20090
- Gollin, E. (1960). Developmental studies of visual recognition of incomplete objects. *Perceptual and Motor Skills*, *2*, 289–298.
- Graham, K. S., & Hodges, J. R. (1997). Differentiating the roles of the hippocampal complex and the neocortex in long-term memory storage: Evidence from the study of semantic dementia and Alzheimer's disease. *Neuropsychology*, *11*, 77–89.
- Harvey, R. J., Skelton-Robinson, M., & Rossor, M. N. (2003). The prevalence and causes of dementia in people under the age of 65 years. *Journal of Neurology, Neurosurgery, and Psychiatry*, *74*, 1206–1209.
- Hong, M., Zhukareva, V., Vogelsberg-Ragaglia, V., Wszolek, Z., Reed, L., Miller, B. I., . . . Lee, V. M. (1998). Mutation-specific functional impairments in distinct tau isoforms of hereditary FTDP-17. *Science*, *282*, 1914–1917. doi:10.1126/science.282.5395.1914
- Hornberger, M., & Piguet, O. (2012). Episodic memory in frontotemporal dementia: A critical review. *Brain: A Journal of Neurology*, *135*, 678–692. doi:10.1093/brain/aws011
- Hou, C. E., Miller, B. L., & Kramer, J. H. (2005). Patterns of autobiographical memory loss in dementia. *International Journal of Geriatric Psychiatry*, *20*, 809–815. doi:10.1002/gps.1361
- Irish, M., Hornberger, M., Lah, S., Miller, L., Pengas, G., & Nestor, P. J. (2011). Profiles of recent autobiographical memory retrieval in semantic dementia, behavioural-variant frontotemporal dementia, and Alzheimer's disease. *Neuropsychologia*, *49*, 2694–2702. doi:10.1016/j.neuropsychologia.2011.05.017
- Ishizuka, T., Nakamura, M., Ichiba, M., & Sano, A. (2011). Familial semantic dementia with P301L mutation in the tau gene. *Dementia and Geriatric Cognitive Disorders*, *31*, 334–340. doi:10.1159/000328412
- Kaplan, E., Goodglass, H., & Weintraub, S. (1983). *Boston naming test*. Philadelphia, PA: Lea & Febiger.
- Kipps, C., Hodges, J., & Hornberger, M. (2010). Nonprogressive behavioural frontotemporal dementia: Recent developments and clinical implications of the “bvFTD phenocopy syndrome”. *Current Opinion in Neurology*, *23*, 628–632.
- Kopelman, M. D., Wilson, B. A., & Baddeley, A. D. (1989). The autobiographical memory interview: A new assessment of autobiographical and personal semantic memory in amnesic patients. *Journal of Clinical and Experimental Neuropsychology*, *11*, 724–744.
- Larner, A. J. (2008). Mutation negative “early-onset familial Alzheimer disease”: Consider screening for tau gene mutations. *Alzheimer Disease and Associated Disorders*, *22*, 194–195. doi:10.1097/WAD.0b013e3181664ea4
- Leung, K. K., Barnes, J., Ridgway, G. R., Bartlett, J. W., Clarkson, M. J., Macdonald, K., . . . Ourselin, S. (2010). Automated cross-sectional and longitudinal hippocampal volume measurement in mild cognitive impairment and Alzheimer's disease. *NeuroImage*, *51*, 1345–1359. doi:10.1016/j.neuroimage.2010.03.018
- Leung, K. K., Clarkson, M. J., Bartlett, J. W., Clegg, S., Jack, C. R., Weiner, M. W., . . . Ourselin, S. (2010). Robust atrophy rate measurement in Alzheimer's disease using multi-site serial MRI: Tissue-specific intensity normalization and parameter selection. *NeuroImage*, *50*, 516–523. doi:10.1016/j.neuroimage.2009.12.059
- Leyhe, T., Müller, S., Milian, M., Eschweiler, G. W., & Saur, R. (2009). Impairment of episodic and semantic autobiographical memory in patients with mild cognitive impairment and early Alzheimer's disease. *Neuropsychologia*, *47*, 2464–2469. doi:10.1016/j.neuropsychologia.2009.04.018
- Matuszewski, V., Piolino, P., Belliard, S., De la Sayette, V., Laisney, M., Lalevée, C., . . . Desgranges, B. (2009). Patterns of autobiographical memory impairment according to disease severity in semantic dementia. *Cortex: A Journal Devoted to the Study of the Nervous System and Behavior*, *45*, 456–472. doi:10.1016/j.cortex.2007.11.006
- Matuszewski, V., Piolino, P., De la Sayette, V., Lalevée, C., Pélerin, A., Dupuy, B., . . . Desgranges, B. (2006). Retrieval mechanisms for autobiographical memories: Insights from the frontal variant of frontotemporal dementia. *Neuropsychologia*, *44*, 2386–2397. doi:10.1016/j.neuropsychologia.2006.04.031
- McKenna, P., & Warrington, E. (1983). *The graded naming test*. Windsor: NFER-Nelson.
- Mesulam, M. (2009). Defining neurocognitive networks in the BOLD new world of computed connectivity. *Neuron*, *62*, 1–3. doi:10.1016/j.neuron.2009.04.001
- Mirra, S., Murrell, J. R., Gearing, M., Spillantini, M., Goedert, M., Crowther, A., Ghetti, B. (1999). Tau pathology in a family with dementia and a P301L mutation in Tau. *Journal of Neuropathology and Experimental Neurology*, *58*, 335–345.
- Morris, R. G., & Mograbi, D. C. (2013). Anosognosia, autobiographical memory and self-knowledge in Alzheimer's disease. *Cortex*, *49*, 1553–1565. doi:10.1016/j.cortex.2012.09.006
- Nelson, H. (1982). *The national adult reading test*. Windsor: NFER-Nelson.
- Oldfield, R., & Wingfield, A. (1965). Response latencies in naming objects. *Quarterly Journal of Experimental Psychology*, *17*, 273–281.
- Piguet, O., Hornberger, M., Mioshi, E., & Hodges, J. R. (2011). Behavioural-variant frontotemporal dementia: Diagnosis, clinical staging, and management. *Lancet Neurology*, *10*, 162–172. doi:10.1016/S1474-4422(10)70299-4
- Ratnavalli, E., Brayne, C., Dawson, K., & Hodges, J. R. (2002). The prevalence of

- frontotemporal dementia. *Neurology*, 58, 1615–1621. doi:10.1212/WNL.58.11.1615
- Rohrer, J. D., Guerreiro, R., Vandrovцова, J., Uphill, J., Reiman, D., Beck, J., . . . Rossor, M. N. (2009). The heritability and genetics of frontotemporal lobar degeneration. *Neurology*, 73, 1451–1456. doi:10.1212/WNL.0b013e3181bf997a
- Rohrer, J. D., Lashley, T., Schott, J. M., Warren, J. E., Mead, S., Isaacs, A. M., . . . Warren, J. D. (2011). Clinical and neuroanatomical signatures of tissue pathology in frontotemporal lobar degeneration. *Brain: A Journal of Neurology*, 134, 2565–2581. doi:10.1093/brain/awr198
- Rohrer, J. D., Paviour, D., Vandrovцова, J., Hodges, J., De Silva, R., & Rossor, M. N. (2011). Novel L284R MAPT mutation in a family with an autosomal dominant progressive supranuclear palsy syndrome. *Neuro-degenerative Diseases*, 8, 149–152. doi:10.1159/000319454
- Rohrer, J. D., Ridgway, G. R., Modat, M., Ourselin, S., Mead, S., Fox, N. C., . . . Warren, J. D. (2010). Distinct profiles of brain atrophy in frontotemporal lobar degeneration caused by progranulin and tau mutations. *NeuroImage*, 53, 1070–1076. doi:10.1016/j.neuroimage.2009.12.088
- Rohrer, J. D., & Warren, J. D. (2011). Phenotypic signatures of genetic frontotemporal dementia. *Current Opinion in Neurology*, 24, 542–549. doi:10.1097/WCO.0b013e32834cd442
- Scahill, R. I., Frost, C., Jenkins, R., Whitwell, J. L., Rossor, M. N., & Fox, N. C. (2003). A longitudinal study of brain volume changes in normal aging using serial registered magnetic resonance imaging. *Archives of Neurology*, 60, 989–994. doi:10.1001/archneur.60.7.989
- Seelaar, H., Kamphorst, W., Rosso, S. M., Azmani, A., Masdjedi, R., & De Koning, I. (2008). Distinct genetic forms of frontotemporal dementia. *Neurology*, 71, 1220–1226. doi:10.1212/01.wnl.0000319702.37497.72
- Shallice, T., & Evans, M. (1978). The involvement of the frontal lobes in cognitive estimation. *Cortex*, 14, 294–303.
- Spillantini, M. G., Van Swieten, J., & Goedert, M. (2000). Tau gene mutations in frontotemporal dementia and parkinsonism linked to chromosome 17 (FTDP-17). *Neurogenetics*, 2, 193–205. doi:10.007/s100489900084
- Spreen, O., & Strauss, E. (1998). *A compendium of neuropsychological tests*. (2nd ed.) New York, NY: Oxford University Press.
- Tolboom, N., Koedam, E. L., Schott, J. M., Yaqub, M., Blankenstein, M. A., Barkhof, F., . . . van Berckel, B. N. (2010). Dementia mimicking Alzheimer's disease owing to a tau mutation: CSF and PET findings. *Alzheimer Disease and Associated Disorders*, 24, 303–307.
- Tulving, E. (1993). Self-knowledge of an amnesic individual is represented abstractly. In T. K. Scull & R. S. Wyer (Eds.), *Mental representation of trait and autobiographical knowledge about the self* (pp. 147–157). Hillsdale, NJ: Erlbaum.
- Van Swieten, J. C., Stevens, M., Rosso, S. M., Rizzu, P., Joosse, M., De Koning, I., . . . Heutink, P. (1999). Phenotypic variation in hereditary frontotemporal dementia with tau mutations. *Annals of Neurology*, 46, 617–626.
- Warren, J. D., Rohrer, J. D., & Hardy, J. (2012). Disintegrating brain networks: From syndromes to molecular nexopathies. *Neuron*, 73, 1060–1062. doi:10.1016/j.neuron.2012.03.006
- Warrington, E. K. (1984). *Recognition memory test manual*. Windsor: NFER-Nelson.
- Warrington, E. K., & James, M. (1991). *The visual object and space perception battery*. Bury St Edmunds: Thames Valley Test.
- Warrington, E. K., & Weiskrantz, L. (1968). New method of testing long-term retention with special reference to amnesic patients. *Nature*, 217, 972–974.
- Wechsler, D. (1987). *Manual for the Wechsler memory scale-revised*. New York, NY: The Psychological Corporation.
- Wechsler, D. (2011). *Wechsler abbreviated scale of intelligence II*. San Antonio, TX: Pearson Education.
- Wechsler, D. A. (1981). *Wechsler adult intelligence scale-revised: Manual*. New York, NY: Psychological Corporation.
- Whitwell, J., Jack, C., Boeve, B., Senjem, M., Baker, M., Ivnik, R. J., . . . Josephs, K. A. (2009). Atrophy patterns in IVS10+ 16, IVS10+ 3, N279K, S305N, P301L, and V337M MAPT mutations. *Neurology*, 73, 1058–1065. doi:10.1212/WNL.0b013e3181b9c8b9
- Whitwell, J. L., Jack, C. R., Boeve, B. F., Senjem, M. L., Baker, M., Rademakers, R., . . . Josephs, K. A. (2009). Voxel-based morphometry patterns of atrophy in FTLD with mutations in MAPT or PGRN. *Neurology*, 72, 813–820. doi:10.1212/01.wnl.0000343851.46573.67
- Whitwell, J. L., Weigand, S. D., Boeve, B. F., Senjem, M. L., Gunter, J. L., DeJesus-Hernandez, M., . . . Josephs, K. A. (2012). Neuroimaging signatures of frontotemporal dementia genetics: C9ORF72, tau, progranulin and sporadics. *Brain: A Journal of Neurology*, 135, 794–806. doi:10.1093/brain/aws001