

# Open Research Online

---

The Open University's repository of research publications and other research outputs

## The complex hierarchy of power relations among key actors in a hotspot mining district in Ghana

### Other

How to cite:

Obodai, Jacob (2020). The complex hierarchy of power relations among key actors in a hotspot mining district in Ghana. The Open University.

For guidance on citations see [FAQs](#).

© [not recorded]

Version: Poster

---

Copyright and Moral Rights for the articles on this site are retained by the individual authors and/or other copyright owners. For more information on Open Research Online's [data policy](#) on reuse of materials please consult the policies page.

---

[oro.open.ac.uk](http://oro.open.ac.uk)



# The complex hierarchy of power relations among key actors in a hotspot mining District in Ghana.

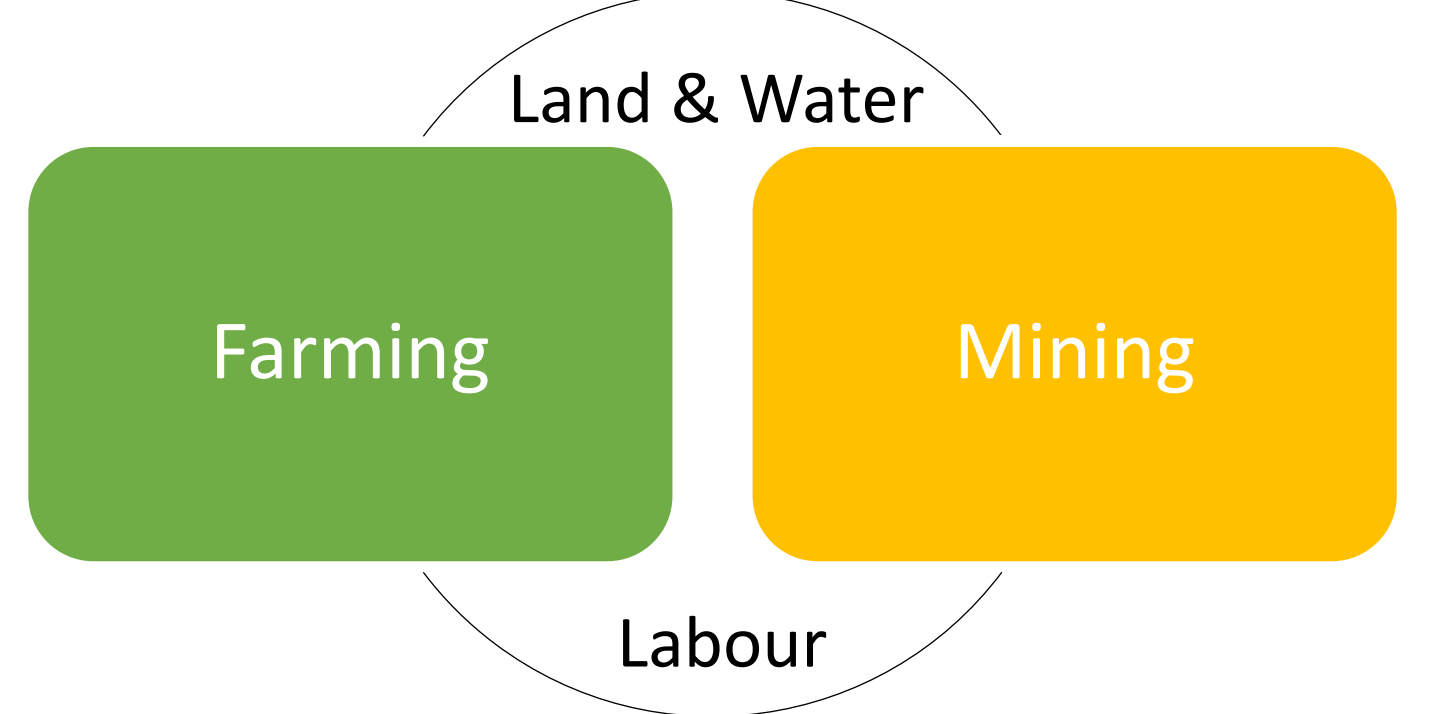
Jacob Obodai, Geography, FASS. The Open University. Email: [jacob.Obodai@open.ac.uk](mailto:jacob.Obodai@open.ac.uk)

Supervisors: Dr Shonil Bhagwat and Prof. Giles Mohan



## 1. Introduction

- ❖ Overlap of mining and farming activities in parts of Ghana's semi-deciduous rain forest agroecological zones



- ❖ Fierce competition for factors of production

## Introduction Con'd

- ❖ Development of complex power relations in accessing resources and accrued benefits
  - ❑ The State
  - ❑ Traditional Authority
  - ❑ Farmers and Miners

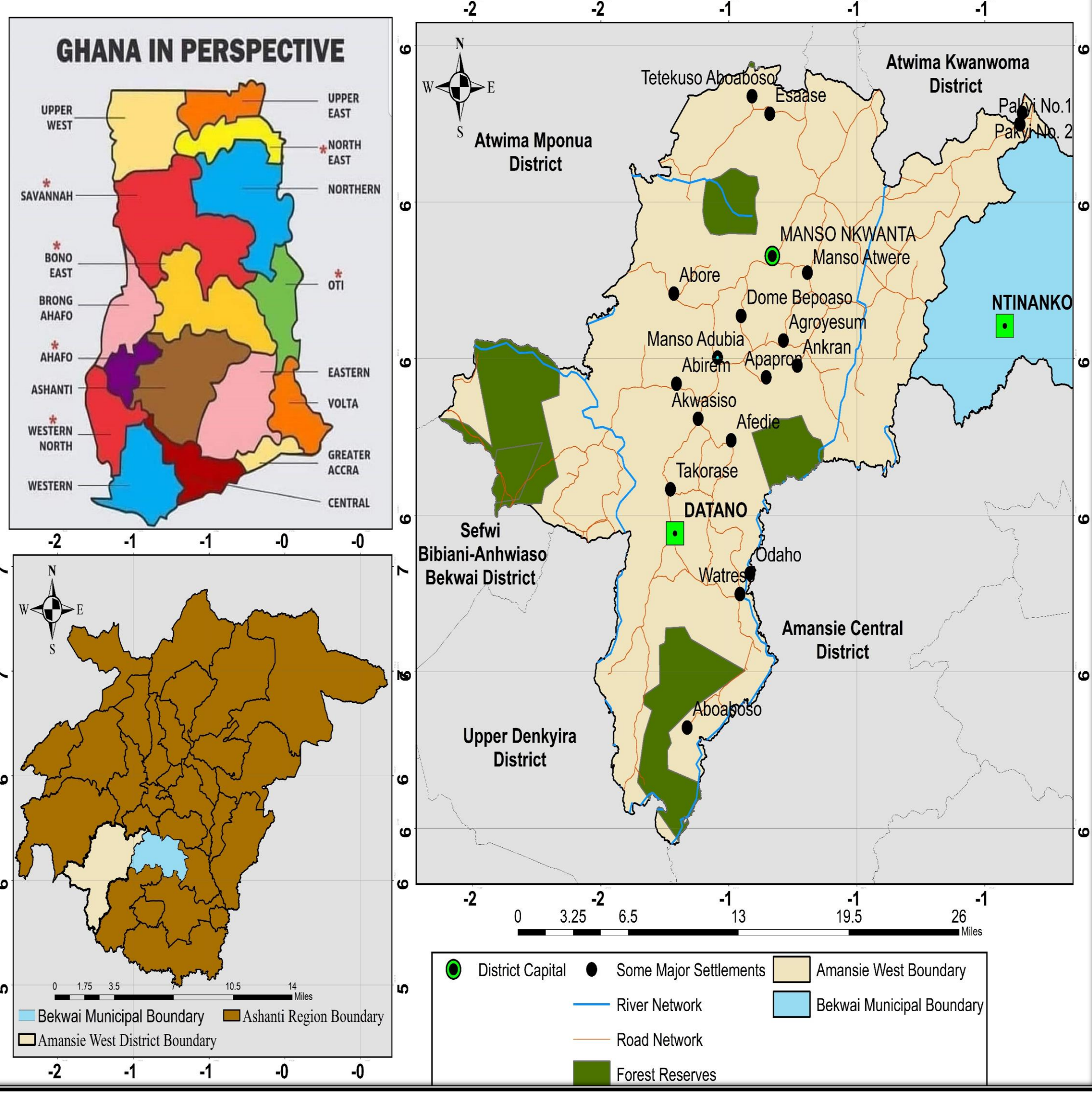
## 2. Aim

- ❖ To understand the complex power relations among key actors in a hotspot mining district in Ghana

## 3. Methods

- ❖ Theoretical Lens: A blend of Political Ecology and Capability Approach
- ❖ Research Approach: Qualitative
- ❖ Data Collection methods/instruments
  - ❑ Key Informant and Semi structured interviews, Focus Group Discussions
- ❖ Data Analysis
  - ❑ Thematic Analysis

## 4. Study Area



## 5. Preliminary Findings



## 6. Conclusions

- ❖ Excessive power of the State and traditional authority actors in accessing resources and benefits
- ❖ Migrant food crop farmers and female artisanal miners exercise the least power in relation to access to resources and the economic benefits accrued
- ❖ Pronounced social differential
  - Young miners verses old farmers
- ❖ The observed power relations hold great implications for food security (study ongoing to unearth these impacts)