

**Original Investigation** | Oncology

Association of Sperm-Associated Antigen 5 and Treatment Response in Patients With Estrogen Receptor-Positive Breast Cancer

Tarek M. A. Abdel-Fatah, PhD; Graham R. Ball, PhD; Pulari U. Thangavelu, PhD; Lynne E. Reid, PhD; Amy E. McCart Reed, PhD; Jodi M. Saunus, PhD; Pascal H. G. Duijf, PhD; Peter T. Simpson, PhD; Sunil R. Lakhani, MD; Lorinc Pongor, PhD; Balázs Gyórfy, PhD; Paul M. Moseley, BSc (Hons); Andrew R. Green, PhD; Alan G. Pockley, PhD; Carlos Caldas, DM; Ian O. Ellis, DM; Stephen Y. T. Chan, DM

Abstract

IMPORTANCE There is no proven test that can guide the optimal treatment, either endocrine therapy or chemotherapy, for estrogen receptor-positive breast cancer.

OBJECTIVE To investigate the associations of sperm-associated antigen 5 (*SPAG5*) transcript and *SPAG5* protein expressions with treatment response in systemic therapy for estrogen receptor-positive breast cancer.

DESIGN, SETTINGS, AND PARTICIPANTS This retrospective cohort study included patients with estrogen receptor-positive breast cancer who received 5 years of adjuvant endocrine therapy with or without neoadjuvant anthracycline-based combination chemotherapy (NACT) derived from 11 cohorts from December 1, 1986, to November 28, 2019. The associations of *SPAG5* transcript and *SPAG5* protein expression with pathological complete response to NACT were evaluated, as was the association of *SPAG5* mRNA expression with response to neoadjuvant endocrine therapy. The associations of distal relapse-free survival with *SPAG5* transcript or *SPAG5* protein expressions were analyzed. Data were analyzed from September 9, 2015, to November 28, 2019.

MAIN OUTCOMES AND MEASURES The primary outcomes were breast cancer-specific survival, distal relapse-free survival, pathological complete response, and clinical response. Outcomes were examined using Kaplan-Meier, multivariable logistic, and Cox regression models.

RESULTS This study included 12 720 women aged 24 to 78 years (mean [SD] age, 58.46 [12.45] years) with estrogen receptor-positive breast cancer, including 1073 women with *SPAG5* transcript expression and 361 women with *SPAG5* protein expression of locally advanced disease stage IIA through IIIC. Women with *SPAG5* transcript and *SPAG5* protein expressions achieved higher pathological complete response compared with those without *SPAG5* transcript or *SPAG5* protein expressions (transcript: odds ratio, 2.45 [95% CI, 1.71-3.51]; $P < .001$; protein: odds ratio, 7.32 [95% CI, 3.33-16.22]; $P < .001$). Adding adjuvant anthracycline chemotherapy to adjuvant endocrine therapy for *SPAG5* mRNA expression in estrogen receptor-positive breast cancer was associated with prolonged 5-year distal relapse-free survival in patients without lymph node involvement (hazard ratio, 0.34 [95% CI, 0.14-0.87]; $P = .03$) and patients with lymph node involvement (hazard ratio, 0.35 [95% CI, 0.18-0.68]; $P = .002$) compared with receiving 5-year endocrine therapy alone. Mean (SD) *SPAG5* transcript was found to be downregulated after 2 weeks of neoadjuvant endocrine therapy compared with pretreatment levels in 68 of 92 patients (74%) (0.23 [0.18] vs 0.34 [0.24]; $P < .001$).

(continued)

Key Points

Question Are sperm-associated antigen 5 (*SPAG5*) transcript or protein expressions associated with treatment response in patients with estrogen receptor-positive breast cancer?

Findings In this cohort study including 12 720 patients with estrogen receptor-positive breast cancer, *SPAG5* transcript and *SPAG5* protein overexpressions were associated with worse outcomes in patients who received endocrine therapy alone. Overexpressions of *SPAG5* transcript or *SPAG5* protein were associated with resistance to endocrine therapy but sensitivity to anthracycline-based combination chemotherapy, and downregulation of *SPAG5* during the course of preoperative systemic therapies was associated with clinical benefit.

Meaning These findings suggest that *SPAG5* transcript or *SPAG5* protein expression could be used as a clinical tool for selecting and monitoring response to neoadjuvant therapies and guide adjuvant therapy in estrogen receptor-positive breast cancer.

+ Supplemental content

Author affiliations and article information are listed at the end of this article.

 **Open Access.** This is an open access article distributed under the terms of the CC-BY License.

Abstract (continued)

CONCLUSIONS AND RELEVANCE These findings suggest that *SPAG5* transcript and *SPAG5* protein expressions could be used to guide the optimal therapies for estrogen receptor–positive breast cancer. Retrospective and prospective clinical trials are warranted.

JAMA Network Open. 2020;3(7):e209486. doi:10.1001/jamanetworkopen.2020.9486

Introduction

Among 1.38 million newly diagnosed breast cancer cases each year, 65% to 70% of them are estrogen receptor positive.¹ Although single-agent endocrine therapy has significantly extended survival for patients with estrogen receptor–positive breast cancer, resistance to endocrine therapy is common, reported in up to 50% of patients.² To extend treatment benefit and delay the development of endocrine therapy resistance, a combination of endocrine therapy with cytotoxic chemotherapy has been proven to be effective in up to 30% of estrogen receptor–positive breast cancers.^{3–6}

Currently, there is no proven test that can accurately predict response to endocrine therapy or chemotherapy. The current practice is largely based on assessment of the recurrence risk and overall survival (OS), using traditional clinicopathological prognostic factors (eg, lymph node status) and multigene tests (eg, Oncotype DX [Genomic Health], MammaPrint [Agendia], and Prosigna [Nanosting Technologies]).⁷ However, these tests are used to assess outcomes and do not predict if a patient will respond to endocrine therapy or chemotherapy; therefore, it can be difficult for clinicians and patients to determine the risk/benefit ratio associated with endocrine therapy or chemotherapy or to select the effective treatment for individual patients. Therefore, there is a need for an improved method of determining if an individual is likely to respond to chemotherapy or endocrine therapy.

Previously, we reported that sperm-associated antigen 5 (*SPAG5*; OMIM 615562) is a novel oncogene in estrogen receptor–positive luminal-B subtype breast cancer.^{8,9} The aim of this study was to analyze the association of *SPAG5* gene and *SPAG5* protein expression in estrogen receptor–positive breast cancer with treatment response, which may enable better management of estrogen receptor–positive breast cancer.

Methods

Study Design and Cohorts

This study was approved by the institutional review board, independent ethics committee, or hospital research and innovations department at all participating sites. Oral and written consent was obtained from participants prior to the investigation. The participants did not receive financial compensation. This study followed the Strengthening the Reporting of Observational Studies in Epidemiology (STROBE) reporting guideline for cohort studies. The study design and patient cohorts are summarized in **Figure 1**.

Patient Cohorts

The study was conducted in 11 cohorts of women with estrogen receptor–positive breast cancer from December 1, 1986, to November 28, 2019 (eAppendix in the [Supplement](#)): the Molecular Taxonomy of Breast Cancer International Consortium (METABRIC) cohort^{10,11}; The Cancer Genome Atlas–Breast Cancer project (TCGA-BRCA) cohort¹²; the Swegene cohort¹³; the multicenter Gene Expression databases (MC-GEDBs) cohort, which was derived from published microarray data sets as previously described¹⁴; the Nottingham University Hospital early stage breast cancers (NUH-ESBC) cohort; the estrogen receptor–positive Queensland breast cancer follow-up (QBCFU) cohort; the neoadjuvant

endocrine therapy (NET) cohort, which included patients who received aromatase inhibitors and was derived from 3 published microarray data sets (ie, GSE59515, GSE55374 and GSE20181) as previously described¹⁵; the multicenter neoadjuvant anthracycline combination chemotherapy (MC-NACT) cohort, which was derived from 11 databases; the NUH locally advanced breast cancer (NUH-LABC) cohort; the MD Anderson Cancer Center (MDACC) cohort,¹⁶ which included patients with recently diagnosed estrogen receptor–positive breast cancer who did not have *HER2* (OMIM 164870) gene expression and who were treated with NACT with taxane followed by 5-year adjuvant endocrine therapy¹⁶; and the multicenter adjuvant therapy (MC-AT) cohort, which was retrieved from 17 multicenter databases of patients with estrogen receptor–positive early stage breast cancer who had received systemic adjuvant therapy.

Measurement and Procedures

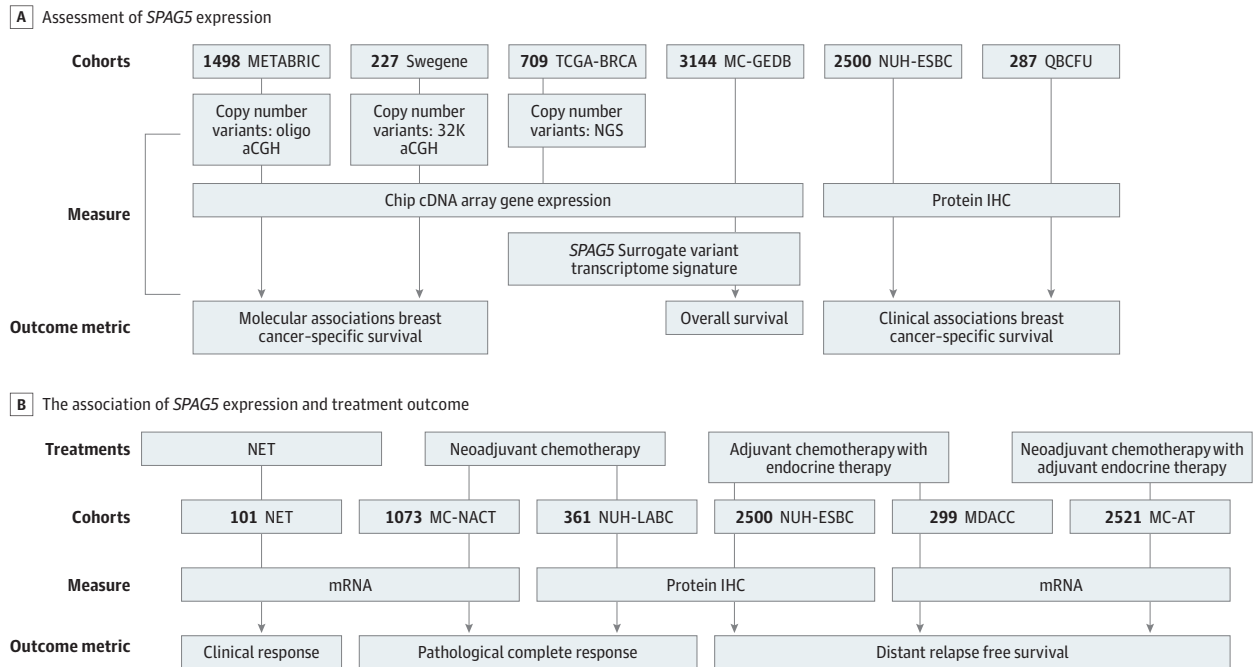
SPAG5 Copy Number Variants

Copy number variants at the *SPAG5* locus on chromosome 17q11.2 were retrieved from the METABRIC,^{10,11} TCGA-BRCA,¹² and Swegene consortium¹³ cohorts. For the Swegene cohort, bacterial artificial chromosome microarrays were produced by the SCIBLU Genomics Centre, Lund University, Lund, Sweden.¹³ For the METABRIC and TCGA-BRCA cohorts, breast cancers were assayed using Affymetrix 6.0 SNP arrays, and the whole exome sequencing data were obtained for the TCGA-BRCA cohort.¹² The aligned TCGA-BRCA data sets were downloaded using the CGHub download client software GeneTorrent version 3.8.5 as previously described.¹⁴

SPAG5 Surrogate Transcriptomic Signature

The *SPAG5* surrogate transcriptomic signature, which corresponded to each type of *SPAG5* variant and included upregulated and downregulated genes, was identified using *SPAG5* genotype. Data on

Figure 1. Cohort Flow Diagram



aCGH indicates array comparative genomic hybridization; AT, adjuvant therapy; IHC, immunohistochemistry; MC-GEDB, multicenter Gene Expression databases; MC-NACT, multicenter neoadjuvant anthracycline combination chemotherapy; MDACC, MD Anderson Cancer Center; METABRIC indicates Molecular Taxonomy of Breast Cancer International Consortium; NACT, neoadjuvant anthracycline-based combination

chemotherapy; NET, neoadjuvant endocrine therapy; NGS, next generation sequencing; NUH-ESBC, Nottingham University Hospital early stage breast cancer; NUH-LABC, Nottingham University Hospital locally advanced breast cancer; QBCFU, Queensland breast cancer follow-up; *SPAG5*, sperm-associated antigen 5; and TCGA-BRCA, The Cancer Genome Atlas-Breast Cancer project.

RNA sequence were derived from next generation sequencing in the TCGA-BRCA cohort, as previously described.¹⁴

SPAG5 Gene Expression

Expression of SPAG5 in mRNA was determined in publicly available gene expression data, including the METABRIC, TCGA-BRCA, Swegene, NET, MC-NACT, MDACC, and MC-AT cohorts. The gene expression raw data were downloaded using the raw data format as described previously.^{8,14}

SPAG5 Protein Expression

Immunohistochemistry (IHC) of SPAG5 protein expression and other breast cancer biomarkers were investigated in the NUH-LABC, NUH-ESBR, and QBCFU cohorts (eTable 1 in the [Supplement](#)).⁵ SPAG5 protein expression was also evaluated in post-NACT surgical specimens from patients who had not achieved pathological complete response (CR) in the NUH-LABC cohort. Immunohistochemistry was performed using an anti-SPAG5 antibody (HPAO22479; Sigma) at a dilution of 1:50.

Outcome Measurements

Molecular characteristic associations of SPAG5 expression (ie, copy number variants and mRNA) were determined in the METABRIC, TCGA-BRCA, and Swegene cohorts. The clinicopathological associations of SPAG5 protein expression were evaluated in the NUH-ESBC and QBCFU cohorts.

Survival

We defined OS as the number of months from diagnosis to the occurrence of death. Survival was censored if the patient was still alive or lost to follow-up by November 28, 2019. The association of SPAG5 variant transcriptomic signature with OS was analyzed in the MC-GEDBs cohort, as previously described.¹⁴

Breast cancer–specific survival (BCSS) was defined as the number of months from diagnosis to the occurrence of death caused by breast cancer. The association of the SPAG5 protein expression with BCSS was analyzed in the METABRIC, Swegene, NUH-ESBC, and QBCFU cohorts.

Distant relapse free survival (DRFS) was defined as the number of months from diagnosis to distant metastases relapse. The association of prechemotherapy SPAG5 mRNA expression with DRFS was evaluated in the MDACC cohort. The association of DRFS with SPAG5 mRNA expression was tested in the MC-AT cohort, and the association of SPAG5 protein expression was tested in the NUH-ESBC cohort. The associations of DRFS with SPAG5 protein expressions in pre- and post-NACT tissue samples were analyzed in NUH-LABC cohort.

Treatment Response

Serial dynamic clinical response to neoadjuvant endocrine therapy was determined in the NET cohort by measuring tumor volumes during a 3-month treatment period and verified by mammographic measurements. Nonresponse was defined by an increase in tumor volume or a partial reduction that never exceeded 50%.¹⁵ The associations of SPAG5 mRNA expression before (after 2 weeks) and during (after 3 months) treatment with clinical response were evaluated.

Pathological CR rate was defined as absence of any neoplastic cells in the primary breast site and lymph nodes after receiving NACT. The association of SPAG5 mRNA expression with pathological CR was evaluated in the MC-NACT cohort. The associations of SPAG5 protein expression in the pre-NACT diagnostic core biopsies with pathological CR after receiving NACT were investigated in the NUH-LABC cohort.

Statistical Analysis

Statistical analyses were performed using Statistica (Stat Soft) and SPSS version 17 (IBM). Where appropriate, Pearson χ^2 , *t* test, and analysis of variance tests were used. Expression of SPAG5 protein before and after chemotherapy was calculated and compared using McNemar test. Cumulative

survival probabilities, 10-year OS, and 5-year DRFS were estimated using the univariate Cox proportional hazards models and the Kaplan-Meier plot method where appropriate, and differences between survival rates were tested for significance using the log-rank test. Multivariable analysis for survival was performed using the Cox proportional hazard model. The proportional hazards assumption was tested using standard log-log plots. Hazard ratios (HRs) and 95% CIs were estimated for each variable. All tests were 2-sided, and $P < .05$ was considered statistically significant. The associations of *SPAG5* transcript and *SPAG5* protein expressions with chemotherapy were tested using Cox proportional hazard model. For multiple comparisons, P values were adjusted according to Benjamini-Hochberg method. Data were analyzed from September 9, 2015, to November 28, 2019.

Results

This study included 12 720 women aged 24 to 78 years (mean [SD] age, 58.46 [12.45] years) with estrogen receptor–positive breast cancer derived from 11 cohorts. The METABRIC cohort^{10,11} included 1498 patients with median (interquartile range [IQR]) follow-up time of 9.1 (5.2-12.9) years (eTable 2 in the Supplement). The TCGA-BRCA cohort¹² included 381 patients with a median (IQR) follow-up time of 1.9 (1.7-3.6) years (eTable 3 in the Supplement). The Swegene cohort¹³ included 227 patients with a median (IQR) follow-up time of 8.1 (5.0-14.0) years (eTable 4 in the Supplement). The MC-GEDBs cohort¹⁴ included 3144 patients. There were 2500 patients in the NUH-ESBC cohort, including 1175 patients (47%) who were adjuvant therapy–naïve, 1050 patients (42%) who received 5-year adjuvant endocrine therapy alone, and 275 patients (11%) who received adjuvant endocrine therapy and chemotherapy. Among 2105 patients in the NUH-ESBC cohort with *HER2* gene expression (7%), none received trastuzumab (eTable 5 in the Supplement). Median (IQR) follow-up time in the NUH-ESBC cohort was 13.4 (10.3-16.4) years. The QBCFU cohort included 287 patients. There were 101 patients in the NET cohort¹⁵ (eTable 6 in the Supplement). The MC-NACT cohort included 1073 patients, among whom 754 (70%) received NACT with taxane, 268 (25%) received NACT alone, and 51 (5%) received NACT with taxane and trastuzumab (eTable 7 and eTable 8 in the Supplement). The NUH-LABC cohort included 361 patients with a median (IQR) follow-up time of 5.1 (3.4-7.0) years, among whom 207 (58%) received NACT with taxane, 104 (29%) received NACT alone, and 45 (13%) received NACT with taxane and trastuzumab. Additionally, 25 patients (7%) did not receive adjuvant therapy, 180 patients (51%) received adjuvant endocrine therapy alone, and 151 patients (42%) received adjuvant endocrine therapy with chemotherapy. A total of 103 patients with *HER2* expression (29%) received adjuvant trastuzumab (eTable 9 in the Supplement). The MDACC cohort included 299 patients, and median (IQR) follow-up time was 9.0 (5.7-10.5) years (eTable 10 in the Supplement). The MC-AT cohort included 2521 patients with median (IQR) follow-up time of 5.4 (3.0-8.7) years (eTable 11 and eTable 12 in the Supplement). Among patients in the MC-AT cohort, 1408 patients (75%) received adjuvant endocrine therapy alone, including 1376 patients (75%) who received tamoxifen and 32 patients (2%) who received aromatase inhibitors, whereas 394 patients (28%) received chemotherapy in addition to adjuvant endocrine therapy; 253 patients (18%) received anthracycline with taxane, 85 patients (6%) received anthracycline alone, and 56 patients (4%) received cyclophosphamide, methotrexate, and fluorouracil. Among 282 patients with *HER2* expression (20%), only 11 patients (4%) received adjuvant trastuzumab.

Gain-amplification of *SPAG5* gene locus at chromosome 17q11.2 was more common in PAM50 luminal-B vs luminal-A (TCGA-BRCA: 72 of 230 patients [31%] vs 65 of 479 patients [14%]; $P < .001$; METABRIC: 87 of 488 patients [18%] vs 45 of 718 patients [6%]; $P < .001$; Swegene: 10 of 64 patients [16%] vs 1 of 89 patients [1%]; $P < .001$). Expression of *SPAG5* in mRNA was associated with luminal-B (determined via PAM50 and 4-IHC), *TP53* (OMIM 191170) variation, *HER2* expression, *BRCA2* (OMIM 600185) variation, luminal-complex genomic pattern, 17q12 genomic patterns, and high genomic instability integrative clusters (IntClust 1, 2 5, 6, 9 and 10) in the METABRIC and Swegene cohorts (eTable 13 and eTable 14 in the Supplement). In contrast, no *SPAG5* expression was associated with luminal-A, paucity of genomic changes, luminal-simplex genomic pattern (1q positive and 16q negative),

low genomic instability, and IntClust 3, 4, and 8 (METABRIC and Swegene cohorts) (eTable 13 and eTable 14 in the [Supplement](#)). Expression of SPAG5 in protein was associated with luminal-B (4-IHC), *HER2* expression, and *TP53* variation (eTable 15 in the [Supplement](#)).

Expressions of SPAG5 in copy number variant gain-amplification and mRNA and SPAG5 protein expression were associated with shorter BCSS compared with SPAG5 copy number variants loss-neutral (METABRIC: HR, 1.55 [95% CI, 1.18-2.04]; $P < .001$; Swegene: HR, 2.27 [95% CI, 1.14-4.45]; $P = .03$), no SPAG5 expression in mRNA (METABRIC: HR, 1.65 [95% CI, 1.31-2.09]; $P < .001$; Swegene: HR, 3.20 [95% CI, 2.25-5.70]; $P < .001$), and no SPAG5 expression in protein (NUH-ESBC: HR, 1.90 [95% CI, 1.51-2.47]; $P < .001$; QBCFU: HR, 2.57 [95% CI, 1.49-4.42]; $P = .02$) (eFigure 1 in the [Supplement](#)).

SPAG5 transcript expression was associated with shorter BCSS compared with no SPAG5 transcript expression in disease without lymph node involvement (METABRIC: HR, 2.07 [95% CI, 1.39-3.08]; $P < .001$) or with lymph node involvement (METABRIC: HR, 1.40 [95% CI, 1.05-1.87]; $P = .02$). Similarly, SPAG5 protein expression was associated with shorter BCSS compared with no SPAG5 protein expression in disease without lymph node involvement (NUH-ESBC: HR, 2.21 [95% CI, 1.52-3.21]; $P < .001$) or with lymph node involvement (NUH-ESBC: HR, 1.70 [95% CI, 1.25-2.39]; $P < .001$) (eFigure 2 in the [Supplement](#)).

In the MC-GEDs cohort, high SPAG5 amplification signature was significantly associated with shorter OS compared with low SPAG5 amplification signature in all patients (HR, 1.96 [95% CI, 1.72-2.22]), as well as in the subclass of patients without *HER2* expression (HR, 2.17 [95% CI, 1.81-2.63]) and with *HER2* expression (HR, 1.52 [95% CI, 1.27-1.85]) (eFigure 3 in the [Supplement](#)).

Multivariable Cox regression models for 10-year BCSS confirmed that SPAG5 transcript and SPAG5 protein expressions were associated with higher risk of death after controlling for other validated prognostic factors (METABRIC: HR, 1.96 [95% CI, 1.72-2.22]; adjusted $P < .001$; NUH-ESBC: HR, 1.68 [95% CI, 1.18-2.39]; adjusted $P < .001$; QBCFU: HR, 1.92 [95% CI, 1.11-3.35]; adjusted $P = .02$) (eTable 16 and eTable 17 in the [Supplement](#)).

After 2 weeks of preoperative endocrine therapy with aromatase inhibitors, mean (SD) SPAG5 transcript expression was found to be significantly downregulated compared with pretreatment levels in 68 of 92 patients (74%) (0.23 [0.18] vs 0.34 [0.24]; $Z = -5.24$; $P < .001$). There was no statistically significant further reduction in the level of SPAG5 transcript expression after 3 months compared with 2 weeks. In 73 of 92 patients with responding tumors (76%) in the NET cohort, a significant downregulation of mean (SD) SPAG5 transcript expression in 68 of 73 patients (93%) occurred by 2 weeks compared with pretreatment levels (0.21 [0.16] vs 0.36 [0.24]; $P < .001$). However, in patients with nonresponding tumors, there was no significant change in SPAG5 transcript levels by either 2 weeks or 3 months compared with pretreatment levels. By 3 months of treatment, median (IQR) SPAG5 transcript was highly expressed in patients with nonresponding tumors compared with patients with responding tumors (0.36 [0.14-0.48] vs 0.18 [0.11-0.25]; Mann-Whitney $P = .01$) (eFigure 4 in the [Supplement](#)).

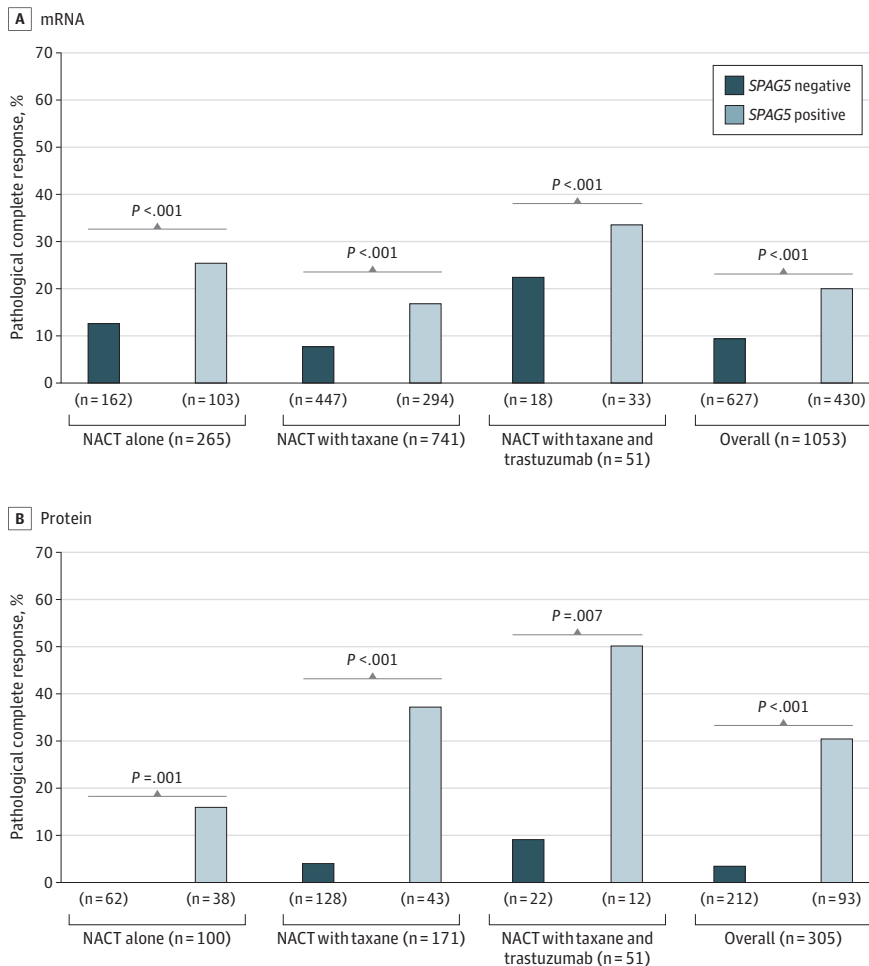
After receiving NACT, patients with SPAG5 transcript and SPAG5 protein expressions had higher pathological CR compared with patients without SPAG5 transcript and SPAG5 protein expressions (MC-NACT cohort: 86 of 430 patients [20%] vs 58 of 627 patients [9%]; odds ratio [OR], 2.45 [95% CI, 1.71-3.51]; $P < .001$; NUH-LABC: 28 of 118 patients [24%] vs 9 of 221 patients [4%]; OR, 7.32 [95% CI, 3.33-16.22]; $P < .001$). Expression of SPAG5 transcript or SPAG5 protein were associated with a higher pathological CR rates compared with no SPAG5 transcript or SPAG5 protein expressions in patients who received either NACT alone (transcript: 26 of 103 patients [25%] vs 19 of 162 patients [12%]; $P < .001$; protein: 6 of 38 patients [16%] vs 0 of 62 patients [0%]; $P < .001$), or NACT with taxane (transcript: 50 of 294 patients [17%] vs 36 of 447 patients [8%]; $P < .001$; protein: 16 of 43 patients [37%] vs 5 of 128 patients [4%]; $P < .001$). In patients with *HER2* expression who received NACT with taxane and trastuzumab, patients with SPAG5 protein expression had statistically significantly higher pathological CR compared with patients without SPAG5 protein expression (6 of 12 patients [50%] vs 2 of 22 patients [9%]; $P = .01$) (**Figure 2**).

Notably, patients without *HER2* expression but with *SPAG5* transcript expression had 2-fold higher pathological CR after receiving NACT alone compared with those who received NACT with taxane (21 of 74 patients [28%] vs 38 of 245 patients [16%]; OR, 2.16 [95% CI, 1.17-3.98]; $P = .01$). Strikingly, no patients without *HER2*, *SPAG5* transcript, or *SPAG5* protein expressions who received NACT alone achieved pathological CR. However, patients with *HER2* and *SPAG5* transcript expressions who received NACT with taxane had similar pathological CR compared with patients who received trastuzumab in addition to NACT with taxane (12 of 48 patients [25%] vs 10 of 33 patients [30%]; $P = .60$) (Figure 2). Multivariable logistic regression models revealed that expressions of *SPAG5* in transcript (MC-NACT cohort: OR, 1.92 [95% CI, 1.01-3.64]; $P = .05$; MDACC cohort: OR, 0.03 [95% CI, 0-0.50]; $P = .01$) and *SPAG5* protein (NUH-LABC cohort: OR, 23.03 [95% CI, 7.26-73.02]; $P = 0.01$) were independently associated with pathological CR (Table 1).

Of 57 patients with *SPAG5* protein expression before NACT, 31 patients (54%) had been converted to no *SPAG5* protein expression in their residual post-NACT surgical specimens after receiving NACT. Among 185 patients without *SPAG5* protein expression before NACT, 13 patients (7%) had *SPAG5* protein expression in the residual tissue (McNemar $P = .01$).

In patients without *HER2* overexpression who received NACT followed by 5-year adjuvant endocrine therapy, we observed a similar 5-year DRFS among patients with and without *SPAG5* transcript expression (MDACC: HR, 1.18 [95% CI, 0.74-1.88]; $P = .50$) and among patients with and without *SPAG5* protein expression (NUH-LABC: HR, 0.83 [95% CI, 0.48-1.42]; $P = .49$) (eFigure 5 in

Figure 2. The Association of Pathological Complete Response With Sperm-Associated Antigen 5 (*SPAG5*) Expression After Receiving Anthracycline With or Without Taxane and Trastuzumab Neoadjuvant Chemotherapy (NACT)



the Supplement). However, in patients with residual disease after NACT, SPAG5 protein expression was associated with shorter 5-year DRFS compared with no SPAG5 protein expression (NUH-LABC: HR, 3.73 [95% CI, 2.29-9.610]; $P < .001$) (Figure 3A).

Among patients without lymph node involvement, SPAG5 protein expression, compared with no SPAG5 protein expression, was associated with shorter DRFS in patients who did not receive systemic adjuvant therapy (HR, 1.82 [95% CI, 1.27-1.59]; $P = .001$) or received adjuvant endocrine therapy alone (HR, 2.52 [95% CI, 1.53-4.16]; $P < .001$) (eFigure 5 in the Supplement). Among patients who received adjuvant endocrine therapy and chemotherapy, there was no significant difference in DRFS between patients with or without SPAG5 protein expression (HR, 0.33 [95% CI, 0.04-2.67]; $P = .30$). Among patients without lymph node involvement, those with SPAG5 transcript expression who received adjuvant endocrine therapy with chemotherapy had longer 5 year DRFS (45 of 51 patients [89%]) compared with those who received adjuvant endocrine therapy alone (97 of 145 patients [67%]) or did not receive adjuvant therapy (125 of 205 patients [61%]). There were no significant differences in DRFS among patients without SPAG5 transcript expression (eFigure 6 in the Supplement).

In patients with lymph node involvement, SPAG5 protein expression was associated with shorter DRFS in those who received adjuvant endocrine therapy alone compared with those without SPAG5 protein expression (NUH-ESBC: HR, 2.24 [95% CI, 1.29-3.90]; $P = .004$) (Figure 3B). Among patients with lymph node involvement who received adjuvant endocrine therapy with chemotherapy, there was no significant difference in DRFS between patients with or without SPAG5 protein expression (NUH-ESBC: HR, 1.00 [95% CI, 0.61-1.64]; $P > .99$) (eFigure 6 in the Supplement). Patients with SPAG5 transcript expression and lymph node involvement who received adjuvant

Table 1. Multivariable Logistic Regression Model Analysis for Pathological Complete Response After Neoadjuvant Chemotherapy Among Patients With Estrogen Receptor–Positive Breast Cancer

Variables	OR (95% CI)	P value
Multivariable logistic regression models analysis for MC-NACT cohort		
High SPAG5 mRNA expression ^a	1.92 (1.01-3.64)	.047
HER2 overexpression ^a	3.03 (1.34-6.88)	.008
Histological grade 3 ^b	2.33 (1.25-4.34)	.008
PAM-50 molecular subclasses		
PAM50-LumA	1 [Reference]	
PAM50-LumB	0.24 (0.07-0.82)	
PAM50-HER2	0.97 (0.23-4.03)	.01
PAM50-Basal-like	0.72 (0.15-3.40)	
PAM50-Normal-like	0.32 (0.10-1.09)	
Received trastuzumab neoadjuvant chemotherapy ^c	0.66 (0.20-2.16)	.49
Multivariable logistic regression models analysis for MDACC cohort		
SPAG5 transcript ^d	0.03 (0.002-0.5)	.01
Ki67 expression ^d	1.33 (0.7-2.52)	.38
Histological grade 3 ^b	2.7 (1.25-5.82)	.01
SPAG5*Ki67*grade	1.62 (1.06-2.46)	.03
Chemosensitivity prediction	4.96 (2.79-8.83)	<.001
Pathological CR prediction signature ^a	2.27 (1.2-4.27)	.01
LumB ^e	0.2 (0.07-0.58)	.003
Multivariable logistic regression models analysis for NUH-LABC neoadjuvant cohort		
High SPAG5 protein expression ^a	23.03 (7.26-73.02)	<.001
Histological grade ^b	2.37 (1.15-4.89)	.02
Patient age ^f	0.99 (0.96-1.01)	.26
HER2 expression ^d	5.83 (1.97-17.22)	.001
Progesterone receptor ^d	0.23 (0.88-0.69)	.009
Received taxane neoadjuvant treatment ^c	1.52 (0.4-5.85)	.54

Abbreviations: CR, complete response; HER2, human epidermal growth factor receptor 2; MC-NACT, multicenter neoadjuvant anthracycline combination based chemotherapy; MDACC, MD Anderson Cancer Center taxane/anthracycline-based neo-adjuvant cohort; NUH-LABC, Nottingham University Hospital locally advanced breast cancer; OR, odds ratio; SPAG5, sperm-associated antigen 5.

- ^a Using low as the reference.
- ^b Using grade 1 or 2 as the reference.
- ^c Using not receiving the treatment as the reference.
- ^d Using no expression as the reference.
- ^e Using PAM50-LumA as the reference.
- ^f Continuous variable, OR is given per 1-year increase.

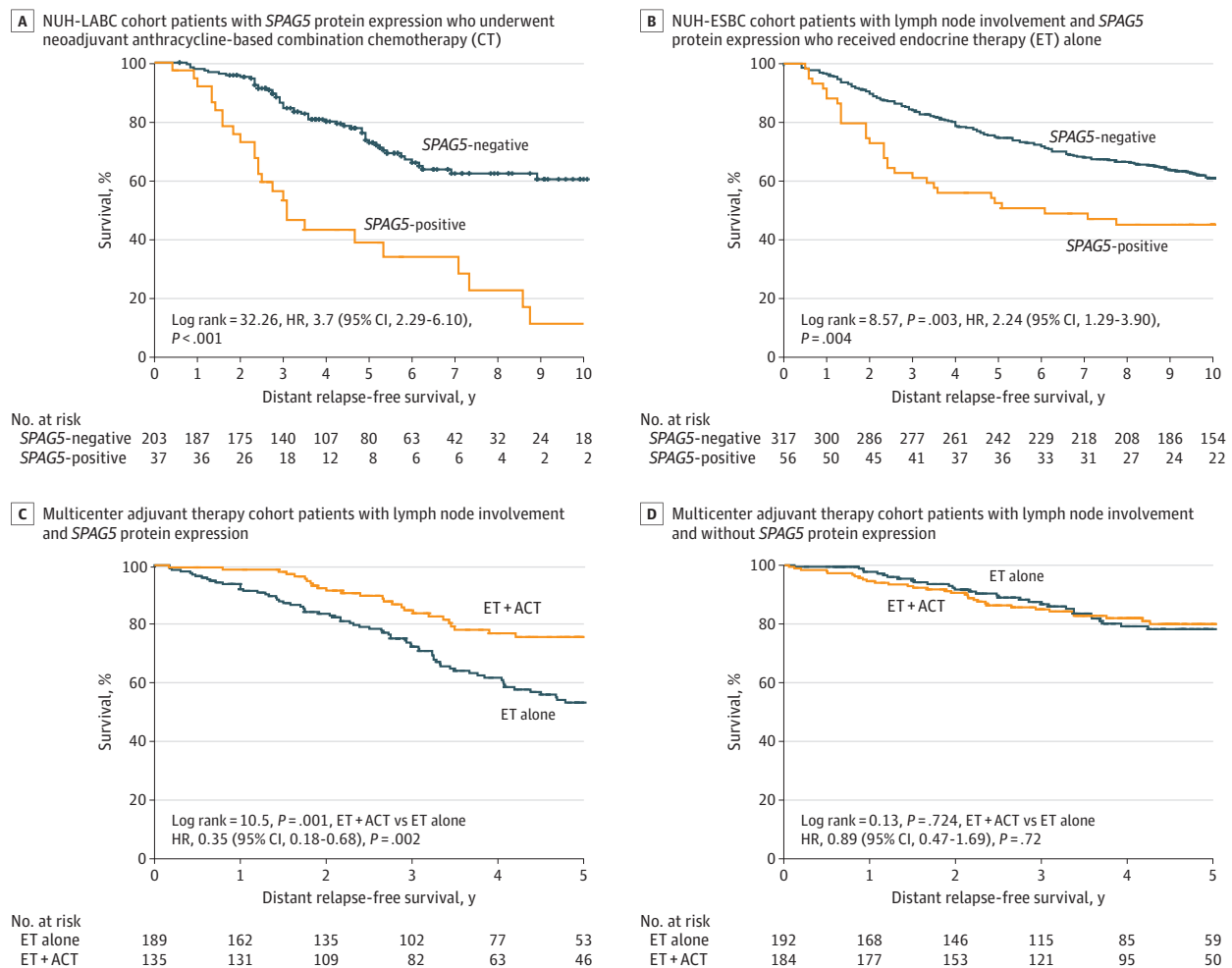
endocrine therapy with chemotherapy had longer 5-year DRFS (144 patients [76%]) compared with those who received adjuvant endocrine therapy alone (104 patients [54%]), whereas there was no significant difference among patients without SPAG5 transcript expression and with lymph node involvement (Figure 3C and D).

A multivariate Cox regression model for 5-year DRFS confirmed that SPAG5 transcript (HR, 2.59 [95% CI, 1.69-3.97]; $P < .001$) or SPAG5 protein (HR, 1.68 [95% CI, 1.18-2.93]; $P = .004$) were associated with poor prognosis after controlling for adjuvant endocrine therapy and other validated prognostic factors. The interaction-term of SPAG5 transcript expression with chemotherapy was statistically significant (HR, 0.33 [95% CI, 0.17-0.67]; $P = .002$) (Table 2).

Discussion

SPAG5 is a microtubule-associated protein required for mitotic spindle formation and chromosome segregation, and its depletion causes multipolar spindle formation, aneuploidy, and cell death.¹⁷ In this cohort study, we have validated SPAG5 as a biomarker associated with endocrine therapy and chemotherapy in estrogen receptor–positive breast cancers, in agreement with previous studies in breast,^{8,18} lung,¹⁹ and cervical cancers.¹⁷ Our data also suggested that SPAG5 could be an important genetic driver in estrogen receptor–positive breast cancer,^{8,9} as SPAG5 dysregulation could

Figure 3. Distant Relapse-Free Survival Associated With Sperm-Associated Antigen 5 (SPAG5) Expression in Patients with Estrogen Receptor–Positive Breast Cancer



ACT indicates anthracycline combination chemotherapy; ESBC, early stage breast cancer; HR, hazard ratio; and NUH, Nottingham University Hospital locally advanced breast cancer.

contribute to high chromosomal instability and aneuploidy, which are hallmarks of malignant cells and confer susceptibility to chemotherapy. Unlike most currently used clinicopathological and multigene tests, *SPAG5* has also potential as a predictive and monitoring tool for endocrine therapy and chemotherapy response. Moreover, *SPAG5* downregulation after neoadjuvant endocrine therapy and NACT is associated with the clinical outcome of the adjuvant endocrine therapy. *SPAG5* expression could be associated with differential sensitivity to anthracycline and taxane. These findings are in agreement with previous studies that suggested anthracycline works best in tumors

Table 2. Multivariable Cox Regression Models Analysis of 5-Year Distant Relapse Free Survival Among Patients With Estrogen Receptor-Positive Breast Cancer

Variables	HR (95% CI)	P value
MC-AT cohort		
Overall model for <i>SPAG5</i> transcript expression		
<i>SPAG5</i> mRNA ^a	2.59 (1.69-3.97)	<.001
<i>MKI67</i> mRNA ^a	0.99 (0.49-1.71)	.77
Lymph node status ^b	1.81 (1.01-1.29)	.001
Tumor size, cm		
≤2	1 [Reference]	.03
>2	1.46 (1.04-2.05)	
Progesterone receptor ^c	0.63 (0.43-0.91)	.01
Histologic grade		
Low	1 [Reference]	.005
Intermediate	2.59 (1.34-5.01)	
High	3.18 (1.59-6.36)	
Size	1.01 (1.007-1.015)	<.001
Endocrine and chemotherapies		
No systemic therapy	1 [Reference]	.004
Endocrine therapy alone	0.57 (0.27-1.18)	
Endocrine therapy with chemotherapy	0.29 (0.13-0.66)	
Anthracycline chemotherapy* <i>SPAG5</i>	0.33 (0.17-0.67)	.002
<i>SPAG5</i> vs PAM-50 molecular classes		
PAM-50 molecular subclasses		
PAM50-LumA	1 [Reference]	.09
PAM50-LumB	1.58 (0.91-2.72)	
PAM50- <i>HER2</i>	1.41 (0.85-2.34)	
PAM50-basal-like	0.86 (0.62-1.18)	
PAM50-normal-like	1.18 (0.85-1.64)	
<i>SPAG5</i> mRNA overexpression ^c	1.85 (1.26-2.70)	.002
NUH-ESBC cohort		
Overall model for <i>SPAG5</i> protein expression ^c		
<i>SPAG5</i> protein expression	1.68 (1.18-2.93)	.004
Ki67 protein expression	0.71 (0.47-1.06)	.09
TOP2A protein expression	0.91 (0.65-1.27)	.57
Tumor size ^d	1.59 (1.23-2.07)	<.001
Lymph node status		
Negative	1 [Reference]	<.001
Positive	1.72 (1.44-2.05)	
Histological grade		
Low or intermediate	1 [Reference]	<.001
High	2.63 (2.10-3.30)	
<i>HER2</i> overexpression ^c	1.68 (1.22-2.32)	.004
Anthracycline chemotherapy ^e	0.68 (0.48-0.94)	.02
Endocrine therapy ^e	0.76 (0.56-1.03)	.08

Abbreviations: *HER2*, human epidermal growth factor receptor 2; HR, hazard ratio; MC-AT, multicenter adjuvant therapy; *SPAG5*, sperm-associated antigen 5.

- ^a Using low as the reference.
- ^b Using no involvement as the reference.
- ^c Using no expression as the reference.
- ^d Continuous variable, HR is given per 1-cm increase.
- ^e Using not receiving the treatment as the reference.

with higher proliferation and chromosomal instability,^{20,21} whereas endocrine therapy and taxane work best in chromosomally stable low proliferative breast cancer.^{15,22}

Studies from 2013²³ and 2008²⁴ have shown that combining chemotherapy, and PI3K or mTOR inhibitors with endocrine therapy restores endocrine therapy responsiveness. In this study and our previous work,⁸ SPAG5 transcript and SPAG5 protein expressions were associated with factors that have been reported to be associated with endocrine therapy resistance and could be a target for novel therapeutic strategies in endocrine therapy resistance (eg, *FOXMT* [OMIM 602341], *mTOR* [OMIM 601231], and *ESPL1* [OMIM 604143] and their corresponding proteins).²⁵ SPAG5 downregulation has been reported to alter mTOR activity and eventually influence the apoptosis.¹⁷ Experiments in cervical cancer have demonstrated that SPAG5 exerts a vital moderating effect on taxol treatment by switching apoptosis off and on via mTOR.¹⁷ Moreover, downregulation of SPAG5 has been demonstrated after treatment with endocrine therapy,¹⁵ PI3K inhibitor, mTOR inhibitors, and trastuzumab when combined with taxol.^{23,24} Therefore, SPAG5 may not only monitor the response to endocrine therapy, but also could be used to select patients who would benefit from additional therapeutic drugs.

Examination of most breast cancer prognostic tests or assays shows that the proliferation cassette is common to all.²⁶ However, most of these tests do not predict the therapeutic benefit from chemotherapy or endocrine therapy. For instance, although the Oncotype DX test (Oncotype IQ) is informative, the decision regarding systemic therapy remains challenging for clinicians for more than 50% of patients with estrogen receptor–positive early breast cancer.^{26,27} Moreover, the routine use of Ki67 in clinical practice has been limited by the lack of its standardization assessment²⁸ and by its lack of success in treatment decision-making in several clinical trials.^{29,30}

Limitations

This study has some limitations. The main limitation of our study is that it was a retrospective observational study. Although it accumulated data from a large number of unselected patients, the patients were neither standardized nor uniformly treated. Therefore, validation of our results in a prospective clinical trial is recommended. Moreover, there is no direct comparison of SPAG5 with Oncotype DX.

Conclusions

This cohort study found that SPAG5 transcript and SPAG5 protein expressions were associated with therapeutic response. This gene and its associated protein could potentially be used to match and monitor effective drugs with individual patients.

ARTICLE INFORMATION

Accepted for Publication: February 25, 2020.

Published: July 7, 2020. doi:10.1001/jamanetworkopen.2020.9486

Open Access: This is an open access article distributed under the terms of the [CC-BY License](#). © 2020 Abdel-Fatah TMA et al. *JAMA Network Open*.

Corresponding Author: Stephen Y. T. Chan, DM, (steve.chan@nuh.nhs.uk), and Tarek M. A. Abdel-Fatah, PhD (abdelfatah_tarek@yahoo.co.uk), Department of Clinical Oncology, University of Nottingham City Hospital, NHS Trust, Hucknall Road, Nottingham, NG5 1PB, United Kingdom.

Author Affiliations: Department of Clinical Oncology, Nottingham University Hospitals NHS Trust, Nottingham, United Kingdom (Abdel-Fatah, Moseley, Chan); Department of Pathology, National Liver Institute, Menoufya University, Al Minufya, Egypt (Abdel-Fatah); John van Geest Cancer Research Centre, Nottingham Trent University School of Science and Technology, Nottingham United Kingdom (Ball, Pockley); Diamantina Institute, Translational Research Institute, The University of Queensland, Brisbane, Australia (Thangavelu, Duijf); UQ Centre for Clinical Research, Faculty of Research, The University of Queensland, Herston, Australia (Reid, McCart Reed, Saunus, Simpson, Lakhani); Pathology Queensland, The Royal Brisbane and Women's Hospital, Herston, Australia

(Lakhani); Lendület Cancer Biomarker Research Group, Second Department of Pediatrics, Semmelweis University, Budapest, Hungary (Pongor, Györffy); Nottingham Breast Cancer Research Center, Division of Cancer and Stem Cells, School of Medicine, University of Nottingham Biodiscovery Institute, University Park, Nottingham, United Kingdom (Green, Ellis); Department of Oncology and Cancer Research, UK Cambridge Institute, Li Ka Shing Centre, University of Cambridge, Cambridge, United Kingdom (Caldas).

Author Contributions: Drs Chan and Abdel-Fatah had full access to all of the data in the study and take responsibility for the integrity of the data and the accuracy of the data analysis.

Concept and design: Abdel-Fatah, Ball, Duijf, Chan.

Acquisition, analysis, or interpretation of data: Abdel-Fatah, Ball, Thangavelu, Reid, McCart Reed, Saunus, Simpson, Lakhani, Pongor, Györffy, Moseley, Green, Pockley, Caldas, Ellis, Chan.

Drafting of the manuscript: Abdel-Fatah, Ball, Thangavelu, Green, Pockley, Chan.

Critical revision of the manuscript for important intellectual content: Abdel-Fatah, Ball, Reid, McCart Reed, Saunus, Duijf, Simpson, Lakhani, Pongor, Györffy, Moseley, Green, Pockley, Caldas, Ellis, Chan.

Statistical analysis: Abdel-Fatah, Ball, McCart Reed, Saunus, Pongor, Györffy, Chan.

Obtained funding: Abdel-Fatah, Ball, Duijf, Chan.

Administrative, technical, or material support: Abdel-Fatah, Reid, Saunus, Simpson, Moseley, Green, Pockley, Ellis, Chan.

Supervision: Abdel-Fatah, Ball, Saunus, Duijf, Lakhani, Chan.

Conflict of Interest Disclosures: Drs Abdel-Fatah, Chan, and Ball reported being named as inventors on a Patent Cooperation Treaty patent application that is jointly held by the Nottingham University Hospitals and Nottingham Trent University (US patent publication No. US20170138947A1; published May 18, 2017). No other disclosures were reported.

Funding/Support: This work was funded by Nottingham Hospitals Charity and National Institute for Health Research.

Role of the Funder/Sponsor: The funders had no role in the design and conduct of the study; collection, management, analysis, and interpretation of the data; preparation, review, or approval of the manuscript; and decision to submit the manuscript for publication.

REFERENCES

1. Jemal A, Bray F, Center MM, Ferlay J, Ward E, Forman D. Global cancer statistics. *CA Cancer J Clin*. 2011;61(2):69-90. doi:10.3322/caac.20107
2. Lumachi F, Santeufemia DA, Basso SM. Current medical treatment of estrogen receptor-positive breast cancer. *World J Biol Chem*. 2015;6(3):231-239. doi:10.4331/wjbc.v6.i3.231
3. Osborne CK, Schiff R. Mechanisms of endocrine resistance in breast cancer. *Annu Rev Med*. 2011;62:233-247. doi:10.1146/annurev-med-070909-182917
4. Finn RS, Martin M, Rugo HS, et al. Palbociclib and letrozole in advanced breast cancer. *N Engl J Med*. 2016;375(20):1925-1936. doi:10.1056/NEJMoa1607303
5. Rugo HS, Keck S. Reversing hormone resistance: have we found the golden key? *J Clin Oncol*. 2012;30(22):2707-2709. doi:10.1200/JCO.2012.42.1271
6. Prat A, Perou CM. Deconstructing the molecular portraits of breast cancer. *Mol Oncol*. 2011;5(1):5-23. doi:10.1016/j.molonc.2010.11.003
7. Barrios CH, Sampaio C, Vinholes J, Caponero R. What is the role of chemotherapy in estrogen receptor-positive, advanced breast cancer? *Ann Oncol*. 2009;20(7):1157-1162. doi:10.1093/annonc/mdn756
8. Abdel-Fatah TMA, Agarwal D, Liu DX, et al. SPAG5 as a prognostic biomarker and chemotherapy sensitivity predictor in breast cancer: a retrospective, integrated genomic, transcriptomic, and protein analysis. *Lancet Oncol*. 2016;17(7):1004-1018. doi:10.1016/S1470-2045(16)00174-1
9. Bertucci F, Viens P, Birnbaum D. SPAG5: the ultimate marker of proliferation in early breast cancer? *Lancet Oncol*. 2016;17(7):863-865. doi:10.1016/S1470-2045(16)30092-4
10. Curtis C, Shah SP, Chin SF, et al; METABRIC Group. The genomic and transcriptomic architecture of 2,000 breast tumours reveals novel subgroups. *Nature*. 2012;486(7403):346-352. doi:10.1038/nature10983
11. European Genome-phenome Archive. Accessed June 1, 2020. <https://www.ebi.ac.uk/ega/home>
12. Cancer Genome Atlas Network. Comprehensive molecular portraits of human breast tumours. *Nature*. 2012;490(7418):61-70. doi:10.1038/nature11412

13. Jönsson G, Staaf J, Vallon-Christersson J, et al. Genomic subtypes of breast cancer identified by array-comparative genomic hybridization display distinct molecular and clinical characteristics. *Breast Cancer Res*. 2010;12(3):R42. doi:10.1186/bcr2596
14. Pongor L, Kormos M, Hatzis C, Pusztaí L, Szabó A, Gyórfy B. A genome-wide approach to link genotype to clinical outcome by utilizing next generation sequencing and gene chip data of 6,697 breast cancer patients. *Genome Med*. 2015;7:104. doi:10.1186/s13073-015-0228-1
15. Miller WR, Larionov A. Changes in expression of oestrogen regulated and proliferation genes with neoadjuvant treatment highlight heterogeneity of clinical resistance to the aromatase inhibitor, letrozole. *Breast Cancer Res*. 2010;12(4):R52. doi:10.1186/bcr2611
16. Symmans WF, Hatzis C, Sotiriou C, et al. Genomic index of sensitivity to endocrine therapy for breast cancer. *J Clin Oncol*. 2010;28(27):4111-4119. doi:10.1200/JCO.2010.28.4273
17. Yuan LJ, Li JD, Zhang L, et al. SPAG5 upregulation predicts poor prognosis in cervical cancer patients and alters sensitivity to taxol treatment via the mTOR signaling pathway. *Cell Death Dis*. 2014;5:e1247. doi:10.1038/cddis.2014.222
18. Buechler S. Low expression of a few genes indicates good prognosis in estrogen receptor positive breast cancer. *BMC Cancer*. 2009;9:243. doi:10.1186/1471-2407-9-243
19. Vålk K, Voeder T, Kolde R, et al. Gene expression profiles of non-small cell lung cancer: survival prediction and new biomarkers. *Oncology*. 2010;79(3-4):283-292. doi:10.1159/000322116
20. Gianni L, Zambetti M, Clark K, et al. Gene expression profiles in paraffin-embedded core biopsy tissue predict response to chemotherapy in women with locally advanced breast cancer. *J Clin Oncol*. 2005;23(29):7265-7277. doi:10.1200/JCO.2005.02.0818
21. Munro AF, Twelves C, Thomas JS, Cameron DA, Bartlett JM. Chromosome instability and benefit from adjuvant anthracyclines in breast cancer. *Br J Cancer*. 2012;107(1):71-74. doi:10.1038/bjc.2012.232
22. Peto R, Davies C, Godwin J, et al; Early Breast Cancer Trialists' Collaborative Group (EBCTCG). Comparisons between different polychemotherapy regimens for early breast cancer: meta-analyses of long-term outcome among 100,000 women in 123 randomised trials. *Lancet*. 2012;379(9814):432-444. doi:10.1016/S0140-6736(11)61625-5
23. Thedieck K, Holzwarth B, Prentzell MT, et al. Inhibition of mTORC1 by astrin and stress granules prevents apoptosis in cancer cells. *Cell*. 2013;154(4):859-874. doi:10.1016/j.cell.2013.07.031
24. Ghayad SE, Bieche I, Vendrell JA, et al. mTOR inhibition reverses acquired endocrine therapy resistance of breast cancer cells at the cell proliferation and gene-expression levels. *Cancer Sci*. 2008;99(10):1992-2003. doi:10.1111/j.1349-7006.2008.00955.x
25. Le XF, Lammayot A, Gold D, et al. Genes affecting the cell cycle, growth, maintenance, and drug sensitivity are preferentially regulated by anti-HER2 antibody through phosphatidylinositol 3-kinase-AKT signaling. *J Biol Chem*. 2005;280(3):2092-2104. doi:10.1074/jbc.M403080200
26. Coates AS, Winer EP, Goldhirsch A, et al; Panel Members. Tailoring therapies—improving the management of early breast cancer: St Gallen international expert consensus on the primary therapy of early breast cancer 2015. *Ann Oncol*. 2015;26(8):1533-1546. doi:10.1093/annonc/mdv221
27. Sparano JA, Gray RJ, Makower DF, et al. Prospective validation of a 21-gene expression assay in breast cancer. *N Engl J Med*. 2015;373(21):2005-2014. doi:10.1056/NEJMoa1510764
28. Sledge GW Jr. Put some PEPI in your step: Ki67's long road to respectability. *J Clin Oncol*. 2017;35(10):1031-1032. doi:10.1200/JCO.2016.71.2182
29. Regan MM, Pagani O, Francis PA, et al; SOFT and TEXT Investigators and International Breast Cancer Study Group. Predictive value and clinical utility of centrally assessed ER, PgR, and Ki-67 to select adjuvant endocrine therapy for premenopausal women with hormone receptor-positive, HER2-negative early breast cancer: TEXT and SOFT trials. *Breast Cancer Res Treat*. 2015;154(2):275-286. doi:10.1007/s10549-015-3612-z
30. Sonnenblick A, Francis PA, Azim HA Jr, et al. Final 10-year results of the Breast International Group 2-98 phase III trial and the role of Ki67 in predicting benefit of adjuvant docetaxel in patients with oestrogen receptor positive breast cancer. *Eur J Cancer*. 2015;51(12):1481-1489. doi:10.1016/j.ejca.2015.03.018

SUPPLEMENT.

eAppendix. Supplementary Methods

eTable 1. Table of Antibodies and Optimisation Conditions Used to Immunohistochemically Profile the Nottingham University Hospitals–Based Cohorts

- eTable 2.** Clinicopathological Characteristics of Molecular Taxonomy of Breast Cancer International Consortium Cohort
- eTable 3.** Clinicopathological Characteristics of The Cancer Genome Atlas-Breast Cancer Project Cohort
- eTable 4.** Clinicopathological Characteristics of the Swegene Cohort
- eTable 5.** Characteristics of Patients in the Nottingham University Hospital Early Stage Breast Cancer Cohort
- eTable 6.** Characteristics of Patients in the Neoadjuvant Endocrine Therapy Cohort
- eTable 7.** Gene Expression Platforms of Multicenter Neoadjuvant Anthracycline-Based Combination Chemotherapy Cohort
- eTable 8.** Characteristics of Patients in the Multicenter Neoadjuvant Anthracycline-Based Combination Chemotherapy Cohort
- eTable 9.** Characteristics of Patients in the Nottingham University Hospital Locally Advanced Breast Cancer Cohort
- eTable 10.** Clinicopathological Characteristics in the MD Anderson Cancer Center Cohort
- eTable 11.** Characteristics of Patients in the Multicenter Adjuvant Therapy Cohort
- eTable 12.** Gene Expression Platforms of Multicenter Adjuvant Therapy Cohort
- eTable 13.** Association of SPAG5 mRNA Expression and Clinicopathologic Variables in the Molecular Taxonomy of Breast Cancer International Consortium Cohort
- eTable 14.** Association of SPAG5 mRNA Expression and Clinicopathologic Variables in the Swegene Cohort
- eTable 15.** Clinicopathological Association of SPAG5 Protein Expression in the Nottingham Historical Early Stage Breast Cancer Cohort
- eTable 16.** Multivariable Cox Regression Models Analysis for 5-Year Overall Survival in the Nottingham University Hospital Early Stage Breast Cancer Cohort
- eTable 17.** Multivariable Cox Regression Models Analysis for 5-Year Overall Survival in Queensland Breast Cancer Follow-Up Cohort
- eFigure 1.** Clinical Outcome of SPAG5 Copy Number Variants and Transcript Expression and SPAG5 Protein Expression in the Estrogen Receptor-Positive Breast Cancer
- eFigure 2.** Clinical Outcome of SPAG5 Transcript and SPAG5 Protein Expression in the Molecular Taxonomy of Breast Cancer International Consortium and Nottingham University Hospital Early Stage Breast Cancer Cohorts
- eFigure 3.** Clinical Outcome of SPAG5 Amplification Transcriptomic Signature
- eFigure 4.** SPAG5 Transcript Expression and Clinical Response to Neoadjuvant Endocrine Therapy
- eFigure 5.** SPAG5 Transcript Expression and Clinical Response to Neoadjuvant Endocrine Therapy
- eFigure 6.** Kaplan-Meier Curves Showing the Outcomes of the Received Adjuvant Systemic Therapy on Distant Relapse Free Survival in Patients With Low and High SPAG5 Transcript, Without Lymph Node Involvement and High or Low SPAG5 Transcript in the Multicenter Adjuvant Therapy Cohort