

1-28-2020

Phylogenetic Afficity of *Genolopa* (Digenea: Monorchiidae) With Descriptions of Two New Species

Apryle J. Panyi
University of Southern Mississippi

Stephen S. Curran
University of Southern Mississippi

Robin M. Overstreet
University of Southern Mississippi

Follow this and additional works at: https://aquila.usm.edu/fac_pubs



Part of the [Parasitology Commons](#)

Recommended Citation

Panyi, A. J., Curran, S. S., Overstreet, R. M. (2020). Phylogenetic Afficity of *Genolopa* (Digenea: Monorchiidae) With Descriptions of Two New Species. *Diversity*, 12(2).
Available at: https://aquila.usm.edu/fac_pubs/17738

This Article is brought to you for free and open access by The Aquila Digital Community. It has been accepted for inclusion in Faculty Publications by an authorized administrator of The Aquila Digital Community. For more information, please contact Joshua.Cromwell@usm.edu.

Article

Phylogenetic Affinity of *Genolopa* (Digenea: Monorchiidae) with Descriptions of Two New Species

Apryle J. Panyi *, Stephen S. Curran and Robin M. Overstreet

Gulf Coast Research Laboratory, The University of Southern Mississippi, 703 E Beach Drive, Ocean Springs, MS 39564, USA; stephen.curran@usm.edu (S.S.C.); robin.overstreet@usm.edu (R.M.O.)

* Correspondence: apryle.panyi@usm.edu

<http://zoobank.org/urn:lsid:zoobank.org:pub:A7C45440-BF7F-4F0C-A3B1-D251A208E04C>



Received: 18 December 2019; Accepted: 21 January 2020; Published: 28 January 2020

Abstract: The validity of *Genolopa* Linton, 1910 has been controversial because the observation of presently recognized critical diagnostic morphological features (spines in the genital atrium and a bipartite, anteriorly spined terminal organ) were omitted from the original diagnosis, and these features were not universally appreciated as important diagnostic features until 2008. Modern taxonomists have been further challenged by inappropriate fixation techniques that have resulted in various interpretations of morphological features. Consequently, named species in the genus have fluctuated among other monorchiid genera depending on various interpretations by taxonomists, and a modern consensus on classifying these species is lacking. This study combines a molecular approach with modern conventional morphological techniques to investigate the validity of *Genolopa* as a lineage within the Monorchiidae. New morphology and molecular sequence data from the type-species of *Genolopa* were studied, and two new species in the genus were described, *Genolopa vesca* n. sp. and *Genolopa minuscula* n. sp. Interrelationships among the Monorchiidae were explored using Bayesian inference analysis of the partial 28S rDNA fragment, incorporating three species of *Genolopa* for the first time. The phylogenetic analysis revealed that the genus represents a natural lineage, supporting the presence of spines in the genital atrium in conjunction with a bipartite and anteriorly spined terminal organ as key features of the generic diagnosis. This study also provides for the first time partial 28S rDNA data for *Postmonorchis orthopristis*, *Lasiotocus trachinoti*, *Lasiotocus glebulentus*, and an unidentified species of *Lasiotocus*.

Keywords: *Genolopa ampullacea*; *Genolopa vesca* n. sp.; *Genolopa minuscula* n. sp.; *Lasiotocus* spp.; *Lasiotocus glebulentus*; *Lasiotocus trachinoti*; *Postmonorchis orthopristis*; 28S; Atlantic Ocean

1. Introduction

The Monorchiidae is a family of internal flukes (Trematoda: Digenea) parasitizing primarily estuarine and marine fishes globally as adults. There are currently over 250 nominal species of monorchiids in approximately 40 genera [1]. Known monorchiid life cycles consist of three hosts: a molluscan first intermediate host, an invertebrate second intermediate host (usually another mollusc), and a molluscivorous fish definitive host [1,2]. However, the first or second intermediate host is known for only 14 monorchiid species [3–6].

Taxonomy of monorchiids is based on morphological features present in adult stages like with most digenean families, and classification of the family has most recently been summarized by Madhavi [1]. The status of *Genolopa* Linton, 1910, originally erected for *Genolopa ampullacea* Linton, 1910 that parasitizes grunts (Perciformes: Haemulidae) in the Dry Tortugas near southern Florida, USA, has been controversial among taxonomists for nearly a century. Early confusion and controversy regarding the genus stemmed primarily from the failure by Linton to report genital atrium spination in his descriptions. Various taxonomists interpreted Linton's species in opposing ways and advocated

conflicting classifications of the species into other monorchiid genera [7–12]. Manter [8] noted that spines present in the genital atrium in Linton's specimens represent an important generic feature. Manter [8] also described the cirrus and terminal organ spines from the type specimens and additional specimens of *G. ampullacea* he collected from the Dry Tortugas.

Currently, the presence of spines in the genital atrium, along with the presence of a bipartite, anteriorly spined terminal organ are used as the primary features differentiating *Genolopa* from other similar monorchiid genera. For example, the diagnoses for *Lasiotocus* Looss, 1907, *Proctotrema* Odhner, 1911, and *Parachrisomon* Madhavi, 2008 are similar to that of *Genolopa*; however, these three genera all consist of species that lack spines in the genital atrium. The diagnoses for three other monorchiid genera (*Proctotrematoides* Yamaguti, 1938, *Paraproctorema* Yamaguti, 1934, and *Monorchicestrahelmins* Yamaguti, 1971) are also similar to that for *Genolopa*. *Proctotrematoides* is diagnosed by having spines in a distinctive muscular, "flask-shaped" diverticulum attached to the genital atrium [13]. The diagnosis for *Paraproctorema* includes presence of spines in the genital atrium similar to the arrangement in *Genolopa* spp., but the terminal organ is unipartite in *Paraproctorema* spp. rather than bipartite, the terminal organ is fully spined rather than partially spined, and a conspicuous bulb-like sphincter occurs where the uterus meets the terminal organ. Similarly, the diagnosis for *Monorchicestrahelmins* includes spines in the genital atrium, but *Monorchicestrahelmins* spp. have a unipartite, spined terminal organ without a bulb-like sphincter where the uterus meets the terminal organ [1].

Investigation of the accepted classification of the Monorchiidae using modern molecular techniques is highly desirable. To date, a paucity of molecular sequence data is available for members of the Monorchiidae. Only 15 of the approximately 40 monorchiid genera are represented in publicly accessible sequence databanks, and only three representative publicly available sequences are from the genera mentioned [4,6,14–23]. Only two genera have sequences of species from western Atlantic monorchiids [17,24]. Currently, no species of *Genolopa* is represented among the publicly available molecular data.

This study utilizes novel molecular sequence data from three species of *Genolopa*, including the type-species (*G. ampullacea*), to estimate the phylogenetic position of the genus among other monorchiids. Reliability of the two generic-level features currently used to differentiate species of *Genolopa* from other monorchiid genera (presence of a spiny genital atrium, and bipartite, anteriorly spined terminal organ) is scrutinized here using molecular analysis. We also describe two new species of *Genolopa* from fishes from the Florida Keys, USA, and additionally provide molecular sequence data for *Postmonorchis orthopristis* Hopkins, 1941 and three species of *Lasiotocus*.

2. Materials and Methods

2.1. Specimen Collection and Morphological Analysis

Various hosts (listed in the taxonomic summaries sections with specific localities) were sampled using baited hook and line and cast netting from areas Florida, USA (April 2017, March 2018, August 2018, September 2018), North Carolina, USA (August 2018), and New Jersey, USA (August 2018). Worms were collected from fish held on ice for no more than 12 h after capture following the methods described by Cribb and Bray [25]. One modification to the methods of Cribb and Bray [25] was post-fixing some worms in 10% formalin specifically for morphological analysis after they had originally been preserved in 70%–80% ethanol. Preserved worms were hydrated using distilled water, stained using VanCleave's hematoxylin or Mayer's hematoxylin, de-stained following methods of Curran et al. [26], and dehydrated in a graded ethanol series, before being cleared in clove oil or methyl salicylate. Cleared specimens were mounted on microscope slides in Canada balsam or Damar gum. Morphological data were collected using an Olympus BX53 compound microscope in conjunction with iSolutions Lite (Version 8.2) © software (IMT, Inc., Vancouver, BC, Canada). Measurements are provided as ranges in micrometers (μm) and, where appropriate, followed by the measurement taken directly from a holotype in parentheses. Specimens were illustrated using a drawing tube and

then digitized using Adobe® Photoshop® CS6 (Adobe Inc., San Jose, CA, USA). The type series for *G. ampullacea* was borrowed from the Smithsonian National Museum of Natural History (USNM), Washington DC, USA, for comparison with the present material. Herein we defined the regions of the bipartite terminal organ relative to the body axis of the worm. The “anterior region” of the terminal organ was the part that opened into the genital atrium, often spined, and the “posterior region” of the terminal organ was the blind portion that was opposite the anterior region, often not spined, vesicular, as defined by Madhavi [1] in reference to bipartite terminal organs. We did not use “proximal/distal” terminology in reference to regions of the terminal organ because those terms have been defined in contradicting ways previously when applied to the monorchiid terminal organ [1,27]. We also wanted to clarify our use of the terms dextral and sinistral. These terms were observer-independent, as if viewed from the body/specimen, not the view of the illustration. Additionally, we defined the terms median and submedian relative to the longitudinal axis or median plane that bisected a bilateral animal into two mirrored halves.

2.2. Molecular Sequencing

Molecular vouchers consisted of hologenophores and paragenophores [28]. Paragenophores were cleared in nuclease-free water, wet-mounted, and photographed for further potential morphological analysis before extraction [24]. Genomic DNA was extracted from molecular vouchers using a QIAgen DNAeasy blood and tissue kit (Qiagen Inc., Valencia, CA, USA) following the manufacturer’s instructions modified to extend the initial tissue lysing stage to 18 h.

The complete second internal transcribed spacer unit (ITS2) and the partial 28S rDNA regions (including domains D1-D3) were targeted and amplified from the extracted DNA by polymerase chain reaction (PCR) using a MJ mini cycler (Bio-Rad, Hercules, CA, USA). The ITS2 rDNA region was amplified using the forward primer ITSf and the reverse primer 300R [29]. Internal sequencing primers for the ITS2 rDNA region included dig12r [29] and d58r [30]. The partial 28S rDNA region was amplified using the forward primer digl2 [29] or LSU5 [31] and the reverse primer 1500R [29] targeting the 5’ end of the 28S rDNA region. Internal sequencing primers for the partial 28S rDNA region included 300F, ECD2, and 900F [29].

The PCR reactions were conducted in a total volume of 25 µL that contained 10.5 µL extracted DNA, 12.5 µL Taq buffer (DreamTaq Master Mix 2X, Thermo Fisher Scientific, Waltham, MS, USA), and 1 µL of each forward and reverse primer at 10 mM/µL concentration. The PCR cycling profile was as follows: 3 min denaturation at 94 °C; 40 cycles of 30 sec denaturation at 95 °C, 45 sec annealing at 52 °C, 2 min extension at 72 °C, and 3 min extension hold at 72 °C. Samples were then held at 4 °C after completion of the reaction protocol. The PCR products then underwent gel electrophoresis; subsequent bands were cut from the gel and extracted using a QIAquick Gel Extraction Kit following the manufacturer’s instructions (Qiagen Inc., Valencia, CA, USA). Sanger sequencing reactions were conducted by Eurofins Genomics LLC (Louisville, KY, USA) and GENEWIZ (South Plainfield, NJ, USA). Sequencing of the ITS2 rDNA region was successful for some of our species only. Consequently, the present phylogenetic analysis is based on sequence data from the partial 28S rDNA region. The 5’ end of the partial 28S rDNA region was determined by annotation in the ITS2 Database using the ‘Metazoa’ model [32,33]. Successfully generated sequence regions were provided to GenBank and accession numbers were provided below in Table 1, taxonomic summaries, and Appendix A. Although the ITS2 sequences were not used for phylogenetic analysis in this study, they were made publicly available for use in future works.

2.3. Phylogenetic Analysis

Contiguous sequences were assembled using Sequencher™ version 5.0 (GeneCodes Corp., Ann Arbor, MI, USA). New sequences derived from two new species of *Genolopa* (found in taxonomic summaries below) and five other newly generated monorchiid sequences were combined with available partial 28S rDNA sequences of some monorchiids and related species in GenBank (listed in Table 1).

Sequences were aligned and masked with the GUIDANCE2 web-server (<http://guidance.tau.ac.il>) [34,35] using the MAFFT alignment algorithm, 100 bootstrap repeats, 1000 cycles of iterative refinement, and the *localpair* algorithm. Alignment (column) positions with confidence scores < 0.413 were excluded from subsequent Bayesian inference (BI) analysis [24]. The alignment was then trimmed on both ends to the shortest sequence, excluding *Lasiotocus lizae* because the 28S rDNA sequence was much shorter than for the other species in the alignment, and edited by eye in BioEdit (version 7.0.5) (see supplemental data for .fas alignment file). Phylogenetic analysis was conducted using BI with MrBayes 3.2.7 software [36,37]. The best nucleotide substitution model was estimated with jModeltest version 2.1.10 [38] and both the Akaike information criterion (AIC) and Bayesian information criterion (BIC) predicted the GTR + I + Γ model as the best estimator. Therefore, the BI analysis was conducted using the closest approximation to this model. The BI analysis was performed using the following model parameters: “nst = 6”, “rates = invgamma”, “ngen = 1000000”, “samplefreq = 500”, “printfreq = 500”, and “diagfreq = 5000”. The values of the samples of the substitution model parameters were summarized using “sump”. Tree and branch lengths were summarized using “sumt”. The first 25% of trees were discarded using the following settings: “relburnin = yes”, “burninfrac = 0.25”. Nodal support was estimated by posterior probabilities. All other settings were left as default values. Two species in the Lepocreadiidae and one species in the Lissorchiidae were included in the alignment, with *Bianium arabicum* Sey, 1996 serving as the functional outgroup for the analysis [14,39]. FigTree version 1.4.3 [40] was used to visualize the phylogeny and Adobe® Photoshop® CS6 (Adobe Inc., San Jose, CA, USA) was used for subsequent editing.

Table 1. Partial 28S rDNA sequence data used in the phylogenetic analysis in this study.

Species	Host Species	GenBank Accession Number	Reference
Monorchiidae Odhner, 1911			
<i>Cableia pudica</i>	<i>Cantherines pardalis</i>	AY222251	[17]
<i>Diplomonorchis leiostomi</i> *	<i>Leiostomus xanthurus</i>	AY222252	[17]
<i>Genolopa ampullacea</i> *	<i>Haemulon flavolineatum</i>	MN984474	present study
<i>Helicometroides longicollis</i> *	<i>Diagramma labiosum</i>	KJ658287	[15]
<i>Hurleytrematoides chaetodoni</i> *	<i>Chaetodon striatus</i>	MH244116	[24]
<i>Hurleytrematoides galzini</i>	<i>Gnathanodon speciosus</i>	MK501988	[39]
<i>Hurleytrematoides loi</i>	<i>Gnathanodon speciosus</i>	MK501989	[39]
<i>Lasiotocus arrhichostoma</i>	<i>Diagramma labiosum</i>	KJ658289	[15]
<i>Lasiotocus glebulentus</i>	<i>Mugil curema</i>	MN984476	present study
<i>Lasiotocus lizae</i>	<i>Liza longimanus</i>	LN831723	[16]
<i>Lasiotocus</i> sp.	<i>Menidia menidia</i>	MN984477	present study
<i>Lasiotocus trachinoti</i>	<i>Trachinotus carolinus</i>	MN984478	present study
<i>Lasiotocus typicum</i>	<i>Trachurus trachurus</i>	AY222254	[17]
<i>Madhavia fellaminuta</i>	<i>Upeneus tragula</i>	MG920219	[14]
<i>Monorchis lewisi</i>	<i>Acanthopagrus australis</i>	MF503309	[21]
<i>Monorchis monorchis</i> *	<i>Diplodus vulgaris</i>	AF184257	[19]
<i>Ovipusillus mayu</i> *	<i>Gnathanodon speciosus</i>	MF503310	[21]
<i>Parachrisomon delicatus</i>	<i>Upeneus tragula</i>	MG920218	[14]
<i>Postmonorchis orthopristis</i> *	<i>Haemulon flavolineatum</i>	MN984475	present study
<i>Proctotrema addisoni</i>	<i>Diagramma labiosum</i>	KJ658291	[15]
<i>Provitellus chaometra</i>	<i>Gnathanodon speciosus</i>	MK501984	[39]
<i>Provitellus infrequens</i>	<i>Gnathanodon speciosus</i>	MK501985	[39]
<i>Provitellus turrum</i> *	<i>Pseudocaranx dentex</i>	AY222253	[17]
Lissorchiidae Magath, 1917			
<i>Lissorhis kritskyi</i>	<i>Minytrema melanops</i>	EF032689	[30]
Lepocreadiidae Odhner, 1905			
<i>Bianium arabicum</i>	<i>Lagocephalus lunaris</i>	MH157076	[41]
<i>Lepotrema adlardi</i>	<i>Abudefduf bengalensis</i>	MH730015	[42]

* Indicates type-species of the genus.

3. Results—Morphological

Monorchiidae Odhner, 1911

Genolopa Linton, 1910

3.1. *Genolopa ampullacea* Linton, 1910

3.1.1. Taxonomic Summary

Type host: *Haemulon macrostomum* (Günther, 1859), Spanish grunt, Haemulidae.

Type locality: Dry Tortugas, Florida, USA.

Other hosts reported by the cited authors but specimens not confirmed as *G. ampullacea* by us: Manter [8]: *H. album* (Cuvier, 1830), *H. carbonarium* (Poey, 1860), *H. flavolineatum* (Desmarest, 1823), *H. plumierii* (Lacepède, 1801), *H. sciurus* (Shaw, 1803), *Synodus foetens* (Linnaeus, 1766), Synodontidae; Manter [43]: *H. aurolineatum* (Cuvier, 1830), *H. chrysargyreum* (Günther, 1859), *H. album* (Cuvier, 1830), *H. carbonarium* (Poey, 1860), *H. flavolineatum* (Desmarest, 1823), *H. macrostomum* (Günther, 1859), *H. plumierii* (Lacepède, 1801), *H. sciurus* (Shaw, 1803), *H. striatum* (Linnaeus, 1758), *Synodus foetens* (Linnaeus, 1766); Sparks [44]: *H. sciurus* (Shaw, 1803); Sogandares-Bengal [45]: *H. album* (Cuvier, 1830), *H. parra* (Desmarest, 1823), *H. plumierii* (Lacepède, 1801), *H. sciurus* (Shaw, 1803); Nahhas and Cable [46]: *H. album* (Cuvier, 1830), *H. bonariense* (Cuvier, 1830), *H. flavolineatum* (Desmarest, 1823), *H. melanurum* (Linnaeus, 1758), *H. sciurus* (Shaw, 1803), *H. striatum* (Linnaeus, 1758); Rees [47]: *H. flavolineatum* (Desmarest, 1823); Nagaty and Abdel-Aal [48]: *Cheilinus lunulatus* (Forsskål, 1775), Labridae; Fischthal [49]: *H. flavolineatum* (Desmarest, 1823); Kohn et al. [50]: *H. sciurus* (Shaw, 1803); Centeno and Bashirullah [51]: *H. aurolineatum* (Cuvier, 1830), *H. bonariense* (Cuvier, 1830), *H. chrysargyreum* (Günther, 1859), *H. melanurum* (Linnaeus, 1758), *H. parra* (Desmarest, 1823), *H. steindchneri* (Jordan and Gilbert, 1882); Bashirullah and Díaz [52]: *H. flavolineatum* (Desmarest, 1823).

Other reported localities: Bahamas [44]; Panama and Bimini, British West Indies [45]; Curaçao and Jamaica [46]; Bermuda [47]; Red Sea [48]; Belize [49]; Rio de Janeiro State, Brazil [50]; Venezuela [51,52]; Puerto Rico [53].

Host (present study): *Haemulon flavolineatum* (Desmarest, 1823), french grunt, Haemulidae.

Locality: Islamorada, Florida, USA (24°53′53.3112″ N, 80°39′33.84″ W).

Sites: intestine, pyloric ceca.

Specimens examined: USNM 1321276 (5 syntypes).

Specimens deposited: 3 vouchers: USNM 1611654, 1611655, 1611656 2 hologenophores: USNM 1611657, 1611658.

Sequences deposited: Partial 28S rDNA, two identical replicates (one submitted to GenBank: accession number MN984474).

3.1.2. Supplemental Data (Figure 1) (Based on 5 Gravid, Adult Specimens from *H. flavolineatum*, Mounted without Pressure)

Body elongate, tapering slightly at both ends, widest near mid-body, 829 to 1265 long, 202 to 253 wide. Tegument spinose; spines larger and denser anteriorly, 4 to 6 long, 1 to 3 wide at base, smaller and less dense posteriorly, 3 to 4 long, 2 to 3 wide at base. Eyespot pigment absent. Oral sucker simple, subglobular, subterminal, 70 to 82 long or 5% to 9% of body length, 66 to 82 wide. Ventral sucker circular, weakly muscularized, near anterior third of body, 50 to 57 long or 4% to 6% of body length, 50 to 57 wide. Oral sucker to ventral sucker width ratio 1:0.66 to 1:0.77. Forebody 318 to 407 long or 29% to 36% of body length. Hindbody 519 to 833 long or 57% to 65% of body length. Pharynx slightly elongate to spherical, 36 to 40 long or 3% to 4% of body length, 29 to 37 wide; prepharynx about as long as pharynx. Esophagus 52 to 64 long or 5% to 6% of body length with cecal bifurcation closer to pharynx than ventral sucker. Ceca extending well into hindbody, terminating 114 to 204 from posterior end or 9% to 18% of body length.

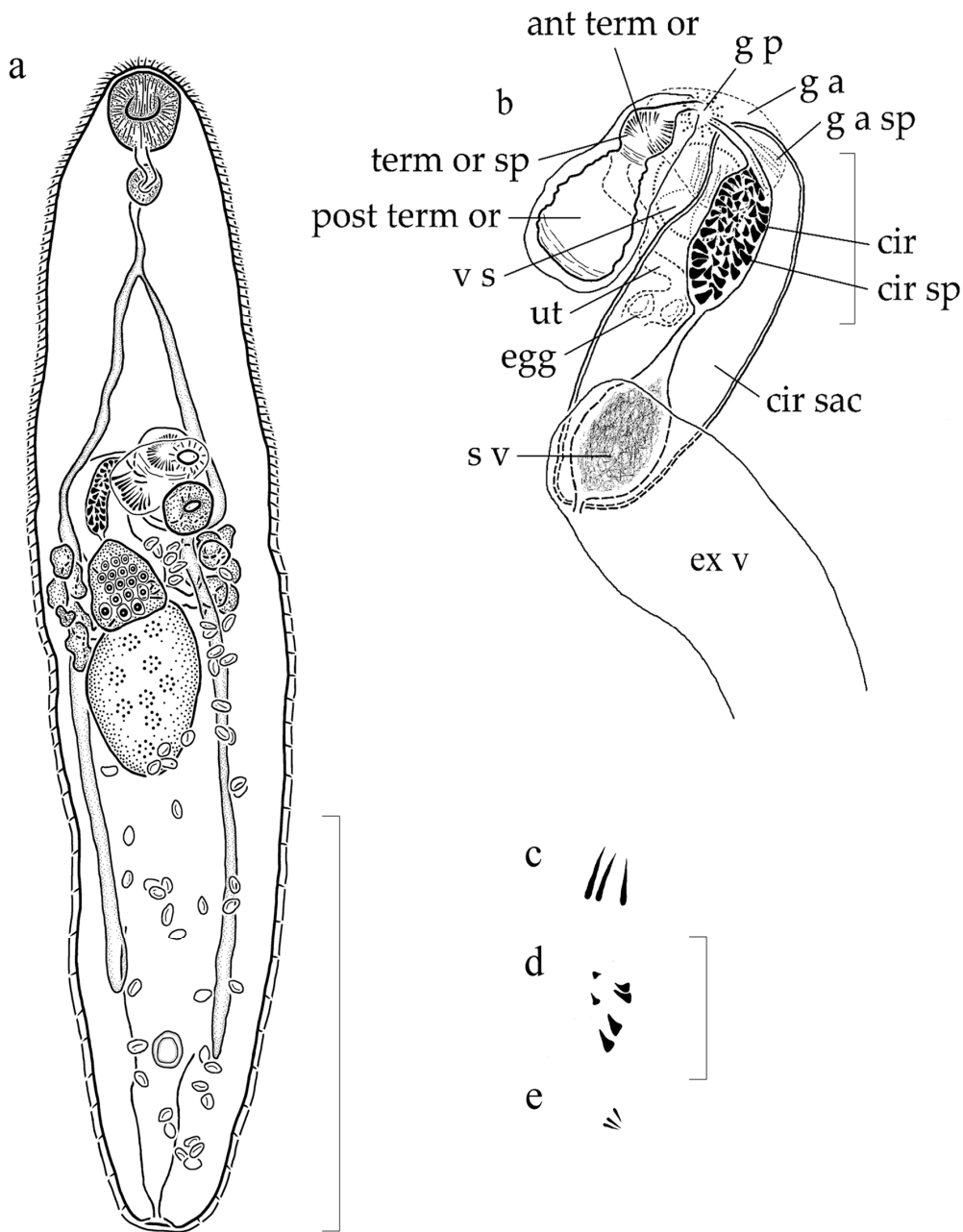


Figure 1. *Genolopa ampullacea* Linton, 1910, from *Haemulon flavolineatum* collected for this study. (a) Ventral view, whole mount, scale bar 400 µm; (b) dorsal view, terminal genitalia showing anterior region of the terminal organ (ant term or), posterior region of the terminal organ (post term or), terminal organ spines (term or sp), ventral sucker (v s), uterus (ut), eggs (egg), seminal vesicle (s v), excretory vesicle (ex v), cirrus sac (cir sac), cirrus (cir), cirrus spines (cir sp), genital atrium (g a), genital atrium spines (g a sp), and genital pore (g p), scale bar 100 µm; (c) genital atrium spines, scale bar 50 µm; (d) cirrus spines, note different sized spines, scale bar 50 µm; (e) anterior terminal organ spines, scale bar 50 µm.

Testis single, subellipsoidal to slightly elongate, median to submedian, dextral, 154 to 170 long or 13% to 19% of body length, 109 to 126 wide. Post-testicular space 324 to 495 long or 35% to 39% of body length. Cirrus sac elongate, curving dextrally, dorsal to ventral sucker and ovary, opening anteriorly into genital atrium, terminating at ovarian level or mid-level of testis, 178 to 240 long or 15% to 21% of body length, 53 to 79 wide (contents consisting of internal seminal vesicle, pars prostatica, prostatic cells, and cirrus); cirrus elongate, 73 to 80 long or 7% to 9% of body length, 19 to 34 wide

when not everted, spined; spines not uniform in size, with smaller spines anteriorly and interiorly, 5 to 8 long, 2 to 3 wide at base; larger spines posteriorly and exteriorly, 8 to 12 long, 3 to 7 wide at base; seminal vesicle unipartite, elongate, in posterior region of cirrus sac, 44 to 82 long or 4% to 10% of body length, 34 to 51 wide. Genital atrium spined; spines more numerous than depicted in Figure 1a,b; spines forming a half ring-like structure located near where cirrus entering atrium, 30 to 38 long, 1 to 3 wide at base when cirrus not everting into genital atrium. Genital pore median, opening 10 to 21 or 1% to 2% of body length anterior to ventral sucker.

Ovary subglobular to triangular, never distinctly lobed, submedian, dextral, ventral to and slightly overlapping anterior margin of testis, 67 to 85 long or 5% to 10% of body length, 61 to 81 wide. Terminal organ slightly flask-shaped when not curving ventrally into cross sectional view or constricted, distinct, bipartite, sinistral to cirrus sac, 122 to 136 long or 10% to 15% of body length, 49 to 52 wide; posterior region unspined, muscular, blind; anterior portion separated by muscular sphincter at mid-level, opening into genital atrium, spined; spines evenly distributed, 8 to 14 long, 1 to 3 wide at base. Mehlis' gland slightly antero-sinistral to ovary (observed in only one specimen). Seminal receptacle not observed. Laurer's canal descending sinistrally from region of female complex to testis level, coiling, ascending in straight line to ovarian level, opening dorsally between ovary and cirrus sac (observed in only one specimen). Vitellarium comprising 2 lateral groups of 7 to 9 follicles at ovarian level; follicles 27 to 37 long, 29 to 39 wide, meeting as common lateral duct, expanding as central, dorsal vitelline reservoir, connecting to female complex (usually obscured). Uterus voluminous, mostly intercecal, extending 28 to 55 or 3% to 6% of body length from posterior end to genital atrium, descending in coils from region of ootype at ovarian level, dorso-sinistral to testis, rarely overlapping testis, reaching posterior extent, ascending in coils ventrally, sinistral to testis, joining terminal organ at mid-level; post-testicular uterus occupying 271 to 454 or 83% to 92% of post-testicular space, 30% to 36% of body length. Eggs operculate, non-filamented, tanned, 15 to 20 long, 8 to 11 wide when distal.

Excretory vesicle I-shaped, extending to posterior end of cirrus sac, often obscured by voluminous egg-filled uterus; single concretion in one specimen; excretory pore terminal.

3.1.3. Remarks

Measurements derived from new and previous observations from the syntypes for *G. ampullacea*, from specimens collected from the southern Atlantic Ocean, and from new supplemental data are provided in Table 2 for comparison. Specimens of *G. ampullacea* collected and studied for taxonomic purposes prior to the present study were fixed using various methods, very commonly using an unheated acid applied to severely compressed worms; whereas the specimens used for the present supplemental data were preserved using the preferred modern method: specimens were heat-killed with near boiling water, preserved in ethyl alcohol (then post-fixed in formalin) or formalin, and mounted without added pressure. Major differences are apparent between specimens fixed under pressure and those heat-killed without pressure [54]. In flattened specimens, body width is nearly 2.5 to 3 times wider, both suckers are compressed to nearly twice their normal size, and the cirrus sac, cirrus, and terminal organs are all nearly twice as large (see Table 2). Comparison among these and other measurements demonstrates the importance of using fixation techniques that avoid artificial compression when conducting taxonomic comparisons. Furthermore, alcohol-formalin-acetic acid (AFA) and other acid fixation methods create slightly acidic conditions in the mounting medium that has been demonstrated to lead over time to the degradation of hard structures such as body spines and spines associated with terminal genitalia [55]. Indeed, tegumental spines appear degraded or are altogether lacking from areas in the syntypes of *G. ampullacea*, and the spines associated with the terminal genitalia are severely degraded. The present supplemental data derived from *G. ampullacea* from *H. flavolineatum* are provided for comparison with future works. Despite the obvious effects of fixation under pressure and with an acid, certain features present in syntypes and discernable from the available descriptions of *G. ampullacea* strongly suggest that the recently collected material from *H. flavolineatum* represents *G. ampullacea*. Specifically, the percentage of post-testicular space relative to

body length, the percentage of post-testicular space occupied by the uterus relative to body length, and the percentage of post-testicular space occupied by the uterus relative to the post-testicular space all agree.

Table 2. Comparison of measurements of *Genolopa ampullacea*. Measurements in micrometers (μm), dimensions shown as length by width.

Reference	Linton [56]	Manter [8]	Manter [8]	Kohn et al. [50]	Present Study	Present Study
Material examined	syntypes	syntypes	new material	new material	syntypes	new material
Under pressure?	yes	yes	no	yes	yes	no
Fixed with an acid?	yes	yes	unknown	yes	yes	no
Host	<i>H. macrostomum</i>	<i>H. macrostomum</i>	<i>H. album</i> , <i>H. carbonarium</i> , <i>H. flavolineatum</i> , <i>H. plumierii</i> , <i>H. sciurus</i> , <i>S. foetens</i>	<i>H. sciurus</i>	<i>H. macrostomum</i>	<i>H. flavolineatum</i>
Locality	Dry Tortugas, FL	Dry Tortugas, FL	Tortugas, FL	Rio de Janeiro, Brazil	Dry Tortugas, FL	Florida Keys
Genital atrium spines	-	34 to 36	34 to 36	5 to 10	30 to 36	30 to 38
Cirrus spines	-	12	12	X 7 to 12	X 4	X 2 to 3, 3 to 7 8 to 14
Terminal organ spines	-	17	17	-	-	X 1 to 3
Body length	1150 to 1420	-	425 to 1275	740 to 1580	1227	829 to 1265
Body width	630	-	187 to 365	310 to 590	602	202 to 253
Oral sucker	140 *	-	50 to 96	120 to 210 X 150 to 170	131 x 174	70 to 82 X 66 to 82
Ventral sucker	120 *	-	34 to 62	49 to 82 X 56 to 94	102 x 58	50 to 57 X 50 to 57
Sucker ratio	-	-	3:2	1:0.37 to 1:0.45	1:0.33	1:0.66 to 1:0.77
Pharynx	40 *	-	17 to 40 X 17 to 42	37 to 56 X 34 to 70	63 x 42	36 to 40 X 29 to 37 178 to 240
Cirrus sac	-	-	225 x 99	-	351 x 135	X 53 to 79 73 to 80
Cirrus	-	-	-	-	168 x 45	X 19 to 34 122 to 136
Terminal organ	-	-	150 x 85	-	242 x 106	X 49 to 52 154 to 170
Testis	-	-	-	150 to 300 X 100 to 180	186 x 155	X 109 to 126
Percentage of post-testicular space to body length	-	-	33%	-	37%	35 to 39%
Ovary	-	-	-	-	113 x 118	67 to 85 X 61 to 81
Eggs	17 x 10	-	18 to 22 X 9 to 11	21 to 28 X 9 to 12	14 to 16 X 7 to 10	15 to 20 X 8 to 11
Excretory vesicle	-	-	I - to ventral sucker	-	-	I - to posterior of cirrus sac

* Transverse diameter.

Despite problems associated with differences in fixation techniques, *G. ampullacea* can be differentiated from the 12 other nominal species in the genus. Herein, *G. ampullacea* is compared with these other nominal species.

Genolopa ampullacea is similar to *Genolopa plectorhynchi* (Yamaguti, 1934) Hopkins, 1941 but is most easily distinguished from the latter by having a subglobular, rounded oral sucker instead of a funnel-shaped oral sucker, a subglobular to triangular ovary rather than a distinctly trilobed ovary, smaller eggs (15 to 20 long, 8 to 11 wide compared with 26 to 29 long, 15 to 18 wide), and the cirrus spines are not bristle-like. Additionally, the description of *G. plectorhynchi* does not mention a spiny genital atrium; however, the illustration of the terminal genitalia of *G. plectorhynchi* appears to have spines surrounding the genital atrium. These spines do, however, look more similar in shape and size to those associated with the cirrus, so it is possible that the illustration shows a partially extruded spiny cirrus. We did not obtain type material of *G. plectorhynchi*, so we cannot confirm if true genital atrium spines exist. *Genolopa plectorhynchi* does have spines in the anterior region of the terminal organ.

Genolopa ampullacea may be differentiated from *Genolopa brevicaecum* (Manter, 1942) Manter and Pritchard, 1961 by the latter not having spines in the anterior region of the terminal organ. Additionally, the genital atrium spines shown in the illustrations of *G. brevicaecum* appear to be similar in shape and size to those associated with the cirrus compared with our material where there is a distinct difference in the size and shape of the genital atrium spines (30 to 38 long, 1 to 3 wide at base) compared with the cirrus spines (8 to 12 long, 3 to 7 wide at base). Possibly the genital atrium spines of *G. brevicaecum* are from a partially extruded spiny cirrus, but no measurement was given. We consider *G. brevicaecum* as *incertae sedis* because it violates the generic diagnosis by lacking spines in the anterior region of the terminal organ.

Genolopa ampullacea may be differentiated from *Genolopa anisotremi* (Nahhas and Cable, 1964) Yamaguti, 1971 and *Genolopa pritchardae* (Nahhas and Cable, 1964) Yamaguti, 1971 by neither *G. anisotremi* nor *G. pritchardae* having a spined genital atrium. Therefore, we consider *G. anisotremi* and *G. pritchardae* to be *incertae sedis*.

Genolopa ampullacea may be differentiated from *Genolopa microsoma* Lebedev, 1968 by the latter having a unipartite, unspined terminal organ and an unspined genital atrium both of which violate the generic diagnosis of *Genolopa*. As a result, we consider *G. microsoma* to be *incertae sedis*.

Genolopa ampullacea may be differentiated from *Genolopa cheilini* Nagaty and Abdel-Aal, 1972 by the latter having an unspined cirrus and an unspined genital atrium. The presence of spines on the cirrus is a family level trait. Therefore, we do not believe *G. cheilini* belongs in the Monorchidae and consider it *incertae sedis*.

Genolopa lunulata Nagaty and Abdel-Aal, 1972 is also likely not a monorchiid. The description of *G. lunulata* states the tegument is smooth, i.e., unspined, and there is no description or illustration of a terminal organ; both are key features of the familial diagnosis, so we consider *G. lunulata* to be *incertae sedis*.

Genolopa ampullacea may be differentiated from *Genolopa mintungensis* Wang, 1975 by the latter not having spines in the genital atrium and what appear to be spines in the posterior region of the terminal organ in the illustration. We were unable to obtain the original species description for *G. mintungensis*, so we are relying on supplemental data from a later publication for this comparison [57]. We consider *G. mintungensis* to be *incertae sedis* because the two aforementioned features violate the generic diagnosis.

Genolopa ampullacea may be differentiated from *Genolopa bychowskii* Zhukov, 1977 by the latter having an unspined tegument, an unspined genital atrium and unspined terminal genitalia. Tegumental spines and a spined cirrus are key to the familial diagnosis, so we do not believe *G. bychowskii* is a monorchiid and consider it *incertae sedis*.

Genolopa ampullacea may be differentiated from *Genolopa lobarichis* Wang, 1977 by the latter having a larger body size, a distinctly lobed ovary, an irregular, unsmooth testis, and fewer vitelline follicles per vitelline group. Additionally, it is unclear if the terminal genitalia and genital atrium are spined in *G. lobarichis*, so we consider it to be *incertae sedis*, possibly at the family level if the cirrus is truly unspined.

Genolopa ampullacea may be differentiated from *Genolopa mugilis* Knoff and Amato, 1992 by the smaller oral to ventral sucker width ratio (1:0.53 to 1:0.58) and smaller genital atrium spine size (7 to 13 long) in *G. mugilis* compared with the larger sucker width ratio (1:0.66 to 1:0.77) and larger genital

atrium spines (30 to 38 long, 1 to 3 wide at base) in *G. ampullacea*. The genital atrium spines of *G. mugilis* are more dispersed throughout the genital atrium and appear similar to the cirrus spines in size and shape compared with the genital atrium spines of *G. ampullacea* that form a ring-like structure of long bristles near where the cirrus enters the genital atrium.

Genolopa ampullacea may be differentiated from *Genolopa magnacirrus* Thatcher, 1996 by the latter having a Y-shaped excretory vesicle, apparent spines in the posterior portion of the terminal organ, and no description or illustration of a spiny genital atrium. Therefore, we consider *G. magnacirrus* to be *incertae sedis*.

We conclude, based on the review of morphological features in presently named species in *Genolopa*, that only three of the nominal species should be considered as valid, *G. ampullacea*, *G. plectorhynchi* and *G. mugilis*. This opinion is based on the fact that these are the only species that possess spines in the genital atrium and spines in the anterior region of the bipartite terminal organ. *Genolopa cheilini*, *G. lunulata*, *G. bychowskii* and possibly *G. loborchis* are considered to be *insertae sedis* at the family level because they do not follow the morphological diagnosis for members of the Monorchiidae. *Genolopa brevicacum*, *G. anisotremi*, *G. pritchardae*, *G. microsoma*, *G. mintungensis*, and *G. magnacirrus* violate the generic diagnosis of *Genolopa* as described above and are considered *incertae sedis*.

3.2. *Genolopa vesca* n. sp.

3.2.1. Taxonomic Summary

Type host: *Haemulon sciurus* (Shaw, 1803), blue striped grunt, Haemulidae.

Type locality: Long Key, Florida, USA (24°47'26.93" N, 80°53'2.96" W).

Sites: intestine, pyloric ceca.

Specimens deposited: Holotype: USNM 1611648; **4 paratypes:** USNM 1611649, 1611650, 1611651, 1611652 **1 hologenophore:** USNM 1611653.

Sequences deposited: Partial 28S rDNA, 1 sequence (one submitted to GenBank: accession number MN984471); ITS2 rDNA, 1 sequence (one submitted to GenBank: accession number MN984471).

Etymology: The specific epithet is a Latin feminine adjective meaning very small in reference to the smaller tegumental spines in this species relative to the type-species.

<http://zoobank.org/urn:lsid:34D4B1D8-D4BE-485B-9102-30436080EDE5>

3.2.2. Description (Figure 2) (Based on 6 Gravid, Adult Specimens and 1 Non-Gravid Specimen, All Mounted without Pressure)

Body elongate, slightly tapering at both ends, narrower anteriorly, widest near mid-body, 871 to 1223 (1223) long, 188 to 276 (211) wide. Tegument spinose; spines largest and densest anteriorly, 2 to 4 long, 1 to 3 wide at base, smaller, rounded, and less dense posteriorly, 1 to 3 long, 2 to 3 wide at base. Eyespot pigment absent. Oral sucker simple, spherical to subspherical, subterminal, 49 to 74 (74) long or 6% to 8% (6) of body length, 51 to 88 (83) wide. Ventral sucker circular, weakly muscularized, between anterior half and anterior third of body, 46 to 60 (60) long or 5% (5) of body length, 41 to 56 (56) wide. Oral sucker to ventral sucker width ratio 1:0.60 to 1:0.85 (1:0.67). Forebody 305 to 504 (504) long or 31% to 41% (41) of body length; hindbody 477 to 652 (652) long or 53% to 60% (53) of body length. Pharynx spherical to slightly elongate, 34 to 43 (43) long or 3% to 4% (4) of body length, 33 to 40 (40) wide. Prepharynx about half length of pharynx to about as long as pharynx, 21 to 40 (40) long or 2% to 3% (3) of body length. Esophagus length variable, 35 to 101 (98) long or 3% to 9% (8) of body length. Cecal bifurcation closer to level of pharynx than level of ventral sucker, 147 to 266 (266) anterior to ventral sucker or 15% to 22% (22) of body length. Ceca extending well into hindbody, terminating 81 to 157 (116) from posterior end or 8% to 16% (10) of body length.

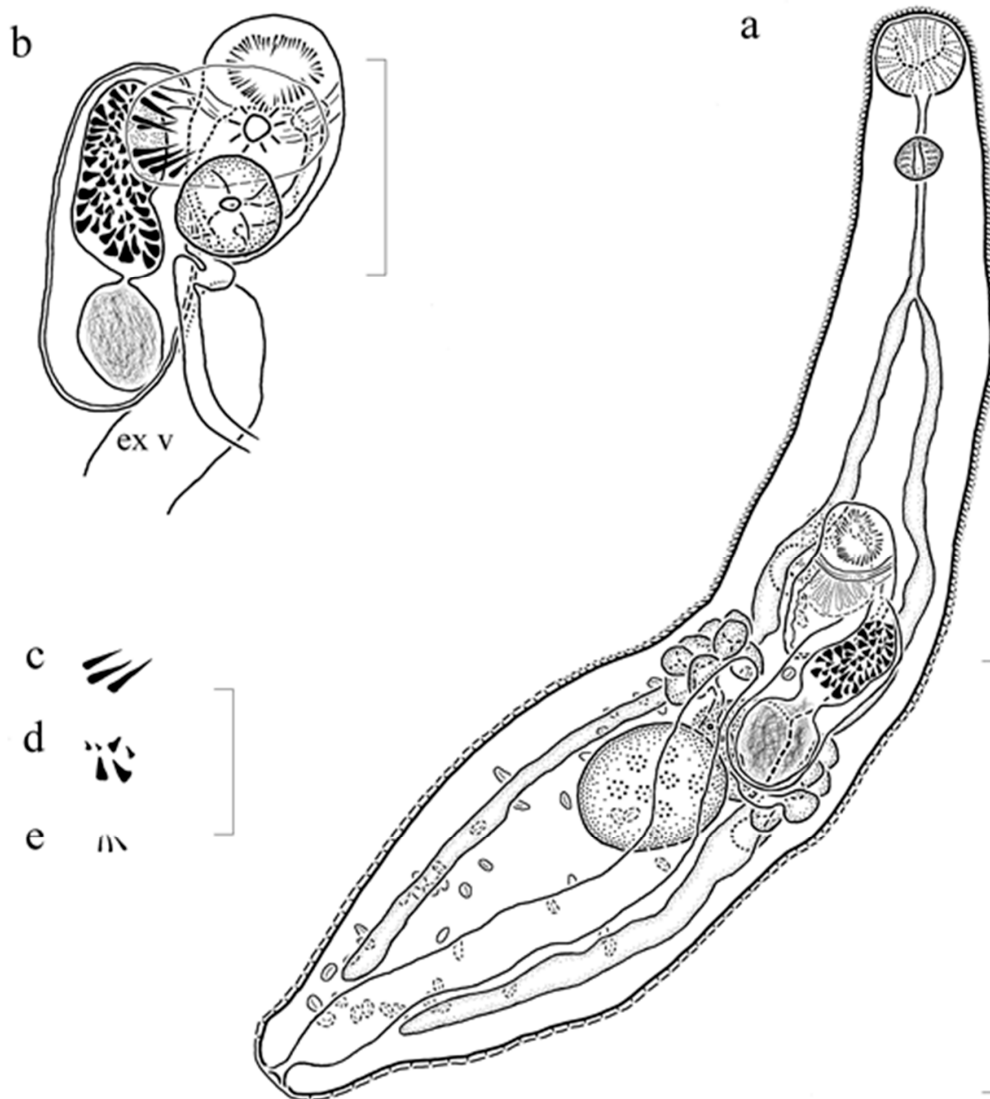


Figure 2. *Genolopa vesca* n. sp. from *Haemulon sciurus*. (a) Dorsal view, holotype, scale bar 400 μ m; (b) ventral view, terminal genitalia and anterior extent of the excretory vesicle (ex v), note anterior portion of the terminal organ is a cross sectional view, scale bar 100 μ m; (c) genital atrium spines, scale bar 50 μ m; (d) cirrus spines, note the different sized spines, scale bar 50 μ m; (e) anterior terminal organ spines, scale bar 50 μ m.

Testis singular, subglobular to slightly elongate, median to submedian, dextral, 106 to 150 (106) long or 9% to 17% (9) of body length, 105 to 129 (105) wide. Post-testicular space 194 to 375 (375) long or 22% to 32% (31%) of body length. Cirrus sac elongate, curving dextrally, dorsal to ventral sucker and ovary, terminating at ovarian level, 148 to 291 (193) long or 16% to 25% (16) of body length, 59 to 76 (70) wide (contents comprising internal seminal vesicle, pars prostatica, prostatic cells, and cirrus); cirrus elongate, 86 to 102 (98) long or 8% to 10% (8) of body length, 27 to 45 (45) wide when not everted, spined; spines not evenly distributed, with larger spines posteriorly and exteriorly, 6 to 9 long, 5 to 7 wide at base; smaller spines anteriorly and interiorly, 5 to 7 long, 2 to 4 wide at base; seminal vesicle internal, unipartite, elongate to spherical, in posterior region of cirrus sac, 53 to 95 (75) long or 6% to 9% (6) of body length, 51 to 75 (75) wide. Genital atrium spined; spines forming a half ring-like structure located near where cirrus entering atrium, 35 to 43 long, 2 to 4 wide at base when cirrus not everting into genital atrium, more numerous in specimens than portrayed in Figure 2a, b. Genital pore median, 8 to 19 anterior to ventral sucker.

Ovary subglobular to triangular, never distinctly lobed, submedian, dextral, pre-testicular or overlapping anterior margin of testis, 72 to 89 (89) long or 7% to 9% (7) of body length, 83 to 95 (91) wide. Terminal organ subarcuate, distinct, muscular, bipartite, sinistral to cirrus sac, 120 to 146 (144) long or 11% to 15% (12) of body length, 46 to 79 (79) wide; posterior region muscular, unspined, blind; anterior portion separated by a muscular sphincter, opening into genital atrium, spined; spines uniform, 8 to 11 long, 1 to 3 wide at base. Mehlis' gland not observed. Seminal receptacle not observed. Laurer's canal not observed. Vitellarium comprising 2 lateral groups of 8 to 9 follicles at level of ovary; follicles 28 to 43 long, 22 to 29 wide, connecting as common vitelline duct, expanding to central, dorsal vitelline reservoir. Uterus voluminous, mostly intercecal, extending 38 to 67 (67) or 4% to 7% (5) of body length from posterior end to genital atrium, descending in coils dorso-sinistral to testis from region of female complex, reaching posterior coiling extent, ascending in coils ventrally, sinistral to testis, entering terminal organ ventrally, slightly anterior to mid-level; post-testicular uterus occupying 123 to 305 (305) or 63% to 87% (81%) of post-testicular space, 14% to 28% (25%) of body length. Eggs operculate, non-filamented, tanned, 13 to 20 long, 6 to 11 wide when distal.

Excretory vesicle I-shaped, extending to level of internal seminal vesicle, curving sinistrally around cirrus sac, often obscured by voluminous egg-filled uterus, one specimen containing 1 concretion; excretory pore terminal.

3.2.3. Remarks

Genolopa vesca n. sp. is most similar morphologically to *G. ampullacea* based on the presence, shape, and size of the genital atrium spines, size and shape of the terminal organ and cirrus spines, extent of the ceca, size and size ratios of the oral and ventral suckers, size of the pharynx, extent of the excretory vesicle, location and shape of the ovary and testis, and location of cecal bifurcation. *Genolopa vesca* n. sp. may be differentiated from *G. ampullacea* by the amount of post-testicular space (22% to 32%) in *G. vesca* n. sp. compared with the amount of post-testicular space (35% to 39%) in *G. ampullacea* and the amount of post-testicular space occupied by the uterus relative to body length (14% to 28%) in *G. vesca* n. sp. compared with *G. ampullacea* (30% to 36%). Additionally, the tegumental spines in the forebody (2 to 4 long, 1 to 3 wide at base) and hindbody (1 to 3 long, 2 to 3 wide at base) are smaller in *G. vesca* n. sp. compared with those in the forebody (4 to 6 long, 1 to 3 wide at base) and hindbody (3 to 4 long, 2 to 3 wide at base) in *G. ampullacea*.

Genolopa vesca n. sp. may be differentiated from *G. plectorhynchi* by the latter having bristle-like cirrus spines, a funnel-shaped oral sucker, a distinctly trilobed ovary, and larger eggs (26 to 29 long, 15 to 18 wide compared with 13 to 20 long, 6 to 11 wide). In addition, the illustration of the terminal genitalia of *G. plectorhynchi* appears to have spines in the genital atrium even though the presence of spines in the genital atrium was not stated in the description. The spines illustrated appear more similar in shape and size to those associated with the cirrus, so it is likely the spines in the genital atrium region in the illustration of *G. plectorhynchi* are from a partially extruded spiny cirrus.

Genolopa mugilis may be differentiated from *G. vesca* n. sp. by the smaller sucker width ratio (1:0.53 to 1:0.58) in *G. mugilis* compared with the sucker width ratio (1:0.60 to 1:0.85) in *G. vesca* n. sp. and the smaller genital atrium spine size (7 to 13 long) in *G. mugilis* compared with the larger genital atrium spines (35 to 43 long, 2 to 4 wide at base) in *G. vesca* n. sp. The genital atrium spines of *G. mugilis* are more dispersed throughout the genital atrium and appear similar to the cirrus spines in size and shape (9 to 11 long), whereas the genital atrium spines of *G. vesca* n. sp. form a half ring-like structure of long bristles, near where the cirrus enters the genital atrium, that are distinct from the cirrus spines.

3.3. *Genolopa minuscula* n. sp.

3.3.1. Taxonomic Summary

Type host: *Anisotremus surinamensis* (Bloch, 1791), black margate, Haemulidae.

Type locality: Marathon, Florida, USA (24°41'58.2432" N, 81°10'12.702" W).

Sites: intestine, pyloric ceca.

Specimens deposited: Holotype: USNM 1611641; 3 paratypes: USNM 1611642, 1611643, 1611644 3 hologenophores: USNM 1611645, 1611646, 1611647.

Sequences deposited: Partial 28S rDNA, 4 identical replicates (one submitted to GenBank: accession number MN984472); ITS2 rDNA, 1 sequence (one submitted to GenBank: accession number MN984473).

Etymology: The specific epithet is a Latin feminine adjective meaning somewhat less in reference to the less extensive uterus in this species compared with the type-species.

<http://zoobank.org/urn:lsid:F9EA40EE-C8B4-42C2-B641-73297EEE6EE7>

3.3.2. Description (Figure 3) (Based on 7 Gravid, Adult Specimens and 1 Non-Gravid Specimen, All Mounted without Pressure)

Body elongate, tapering slightly at both ends, widest near mid-body, 716 to 1373 (1356) long, 228 to 347 wide (335). Tegument spinose; spines larger and denser anteriorly, 4 to 6 long, 2 to 4 wide at base, smaller and less dense posteriorly, 2 to 3 long, 2 to 3 wide at base. Eyespot pigment absent. Oral sucker subspherical, subterminal, 76 to 103 (100) long or 7% to 9% (7) of body length, 78 to 107 (107) wide. Ventral sucker circular to subrounded, very weakly muscularized, near mid-body, 45 to 72 (64) long or 4% to 7% (4) of body length, 47 to 73 (73) wide. Sucker width ratio 1:0.57 to 1:0.79 (1:0.68). Forebody 296 to 614 (614) long or 30% to 51% (45%) of body length; hindbody 320 to 696 (696) long or 43% to 60% (51%) of body length. Pharynx slightly elongate to spherical, 46 to 61 (61) long or 4% to 6% (4) of body length, 40 to 54 (53) wide. Prepharynx slightly more than half length of pharynx to shorter. Esophagus length variable, 28 to 140 (111) long or 2% to 11% (8) of body length with cecal bifurcation closer to pharynx than ventral sucker, 134 to 284 (284) anterior to ventral sucker. Ceca extending well into hindbody, terminating 100 to 136 (124) from posterior end or 8% to 12% (9%) of body length.

Testis single, subglobular to irregular, median to submedian, dextral, 97 to 204 (204) long or 11% to 16% (15) of body length, 62 to 142 (118) wide. Post-testicular space 163 to 411 (411) long or 22% to 31% (30%) of body length. Cirrus sac elongate, curving dextrally, dorsal to ventral sucker and ovary, terminating at level of or posterior to ovary, 156 to 299 (299) long or 16% to 27% (22) of body length, 54 to 90 (84) wide (contents consisting of internal seminal vesicle, pars prostatica, prostatic cells, and cirrus). Cirrus elongate, 78 to 141 long or 9% to 12% (everted in holotype) of body length, 24 to 45 wide when not everted, spined; spines not uniform in size with larger spines posteriorly and exteriorly, 10 to 15 long, 6 to 9 wide at base; smaller spines anteriorly and interiorly, 3 to 8 long, 2 to 4 wide at base. Seminal vesicle internal, unipartite, elongate, in posterior region of cirrus sac, 34 to 122 (122) long or 5% to 10% (9) of body length, 25 to 71 (60) wide. Genital atrium spined; spines 28 to 36 long, 3 to 4 wide at base when cirrus not everting into genital atrium, more numerous than shown in Figure 3a,b. Genital pore median, 7 to 21 anterior to ventral sucker.

Ovary subglobular to triangular, never distinctly lobed, submedian, dextral, pre-testicular or slightly overlapping anterior of testis, 33 to 106 (83) long or 5% to 8% (6) of body length, 45 to 105 (97) wide. Terminal organ subarcuate, conspicuous, bipartite, sinistral to cirrus sac, 112 to 146 (146) long or 11% to 14% (11) of body length, 56 to 78 (64) wide; posterior portion muscular, unspined, blind; anterior region separated by a muscular sphincter, opening into genital atrium, spined; spines uniformly spaced, 8 to 15 long, 1 to 2 wide at base. Mehlis' gland and female complex not observed. Seminal receptacle not observed. Laurer's canal opening dorsally, at ovarian level, dextral to ovary (observed in only one specimen). Vitellarium consisting of 2 lateral groups of 6 to 9 follicles at ovarian level; follicles 24 to 59 long, 14 to 40 wide, smaller in younger individuals, connecting with dorsal, common lateral duct, expanding dorsally as vitelline reservoir. Uterus voluminous, mostly intercecal, extending 98 to 202 (146) or 8% to 18% (11) of body length from posterior end to genital atrium, descending in coils from ovarian level, dorso-sinistral to testis, reaching posterior extent, ascending in coils ventrally, sinistral to testis, joining with terminal organ near mid-level; post-testicular uterus occupying 101 to 277 (264) or

41% to 76% (64) of post-testicular space, 12% to 21% (19) of body length. Eggs 14 to 23 long, 8 to 12 wide, typically 17 to 20 long, 9 to 11 wide when distal.

Excretory vesicle I-shaped, extending to ovarian level to posterior end of ventral sucker, occasionally curved in anterior half, usually obscured by eggs; excretory pore terminal.

3.3.3. Remarks

Genolopa minuscula n. sp. is most morphologically similar to *G. vesca* n. sp. and *G. ampullacea*. Similarities among the species include ovary and testis size, shape, location, the presence, size, and shape of the genital atrium spines, the size and shape of spines in the terminal organ, extension of the ceca well into the hindbody, extension of the excretory vesicle to the ovarian level or posterior edge of ventral sucker, and the oral sucker and ventral sucker size width ratios.

Genolopa minuscula n. sp. may be differentiated from *G. vesca* n. sp. by the latter having smaller tegumental spines in the forebody (2 to 4 long, 1 to 3 wide at base) and hindbody (1 to 3 long, 2 to 3 wide at base) compared with the size of tegumental spines in the forebody (4 to 6 long, 2 to 4 wide at base) and hindbody (2 to 3 long, 2 to 3 wide at base) of *G. minuscula* n. sp.

Genolopa minuscula n. sp. may be differentiated from *G. vesca* n. sp. and *G. ampullacea* by the slightly larger pharynx (46 to 61 long, 40 to 54 wide) and the slightly larger size of the “large” spines on the cirrus (10 to 15 long, 6 to 9 wide at base) in *G. minuscula* n. sp. compared with the pharynx (34 to 43 long, 33 to 40 wide) and “large” cirrus spines (6 to 9 long, 5 to 7 wide) in *G. vesca* n. sp. and compared with the pharynx (36 to 40 long, 29 to 27 wide) and “large” cirrus spines (8 to 12 long, 3 to 7 wide at base) in *G. ampullacea*.

Genolopa minuscula n. sp. may be further differentiated from *G. ampullacea* by the amount of post-testicular space (22% to 31%) in *G. minuscula* n. sp. compared with the space (35% to 39%) in *G. ampullacea*, the amount of post-testicular space occupied by the uterus relative to body length (12% to 21%) in *G. minuscula* n. sp. compared with the post-testicular space occupied by the uterus relative to body length (30% to 36%) in *G. ampullacea*, and the amount of post-testicular space occupied by the uterus relative to post-testicular space (41% to 76%) in *G. minuscula* n. sp. compared with the post-testicular space occupied by the uterus relative to post-testicular space (83% to 92%) in *G. ampullacea*; all three features are relatively reduced in *G. minuscula* n. sp. compared with *G. ampullacea*.

Genolopa minuscula n. sp. may be differentiated from *G. plectorhynchi* by the latter having a funnel-shaped oral sucker, a distinctly trilobed ovary, larger eggs (26 to 29 long, 15 to 18 wide compared with 14 to 23 long, 8 to 12 wide), bristle-like spines on the cirrus, and no mention of a spiny genital atrium. However, the illustration of the terminal genitalia of *G. plectorhynchi* appears to have spines surrounding the genital atrium, but these spines appear to more closely resemble cirrus spines in shape and size. It is possible that the spines near the genital atrium in the illustration are from a partially extruded cirrus.

Genolopa mugilis may be differentiated from *G. minuscula* n. sp. by the smaller size of the genital atrium spines (7 to 13 long) that are more evenly, widely dispersed throughout the whole genital atrium in *G. mugilis* compared with the larger genital atrium spines (28 to 36 long, 3 to 4 wide) that form a half ring-like structure of long bristles near where the cirrus enters the genital atrium in *G. minuscula* n. sp. The range of the sucker width ratios slightly overlaps between *G. minuscula* n. sp. (1:0.57 to 1:0.79) and *G. mugilis* (1:0.53 to 1:0.58).

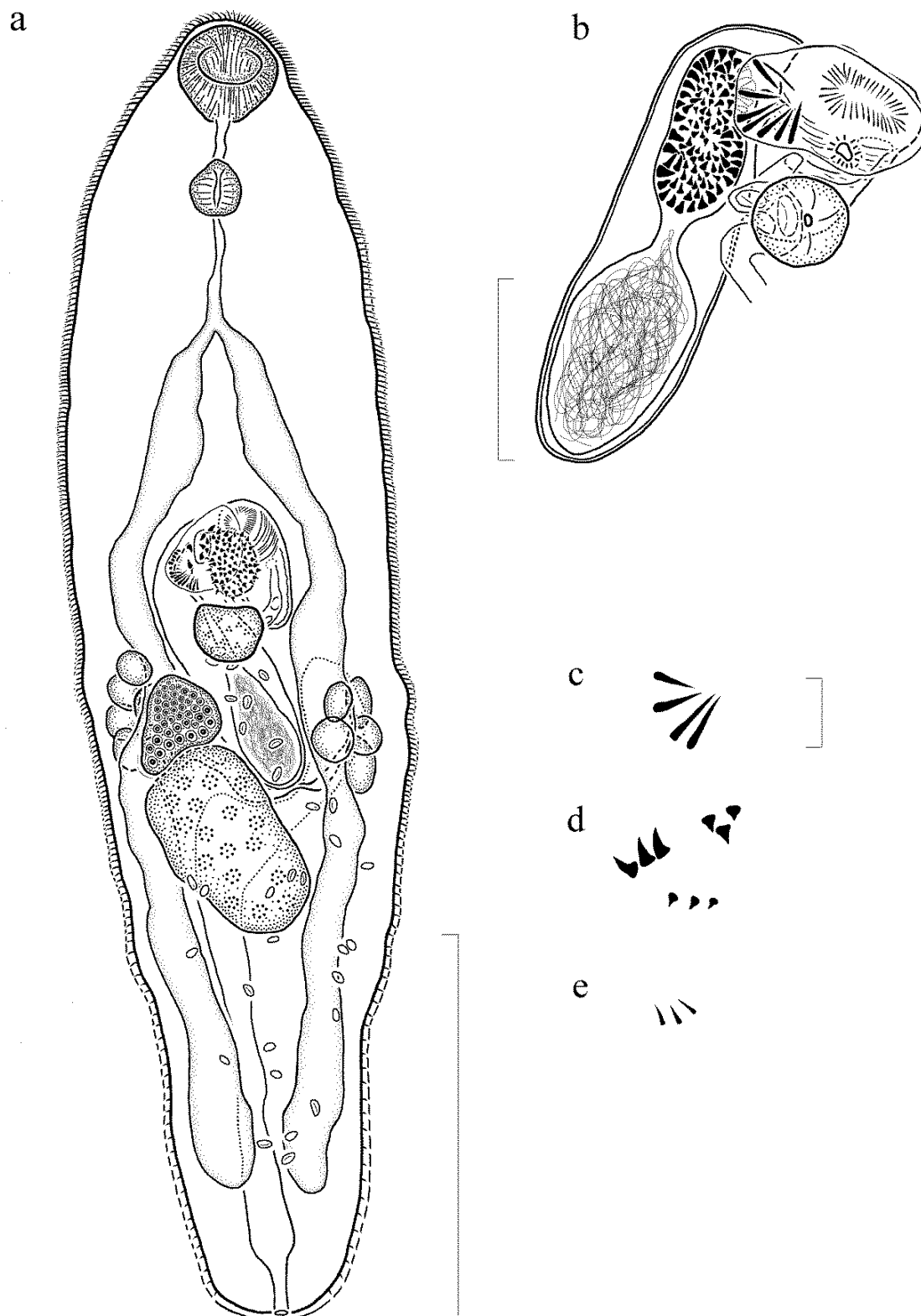


Figure 3. *Genolopa minuscula* n. sp. from *Anisotremus surinamensis*. (a) Ventral view, holotype, scale bar 400 μm , note cirrus everted; (b) ventral view, terminal genitalia, scale bar 100 μm , note anterior portion of terminal organ is a cross sectional view; (c) genital atrium spines, scale bar 40 μm ; (d) cirrus spines, note the different sized spines, scale bar 40 μm ; (e) anterior terminal organ spines, scale bar 40 μm .

3.4. Molecular Results

The trimmed multiple sequence alignment length of partial 28S rDNA fragments consisted of 1163 base pairs, including gaps. Masking revealed no ambiguous column, i.e., columns with confidence scores below the cut off value of 0.413, so no column was excluded in the phylogenetic analysis. BI analysis resulted in an estimated phylogeny (Figure 4) that is consistent with previously reported monorchiid phylogenies [14,21,39]. The present phylogeny indicates that the included species of *Genolopa* (all from western Atlantic Ocean) form a well-supported clade with *P. orthopristis* (Appendix A). This clade is separate from any species of *Lasiotocus*, *Parachrisomon*, or *Proctotrema*.

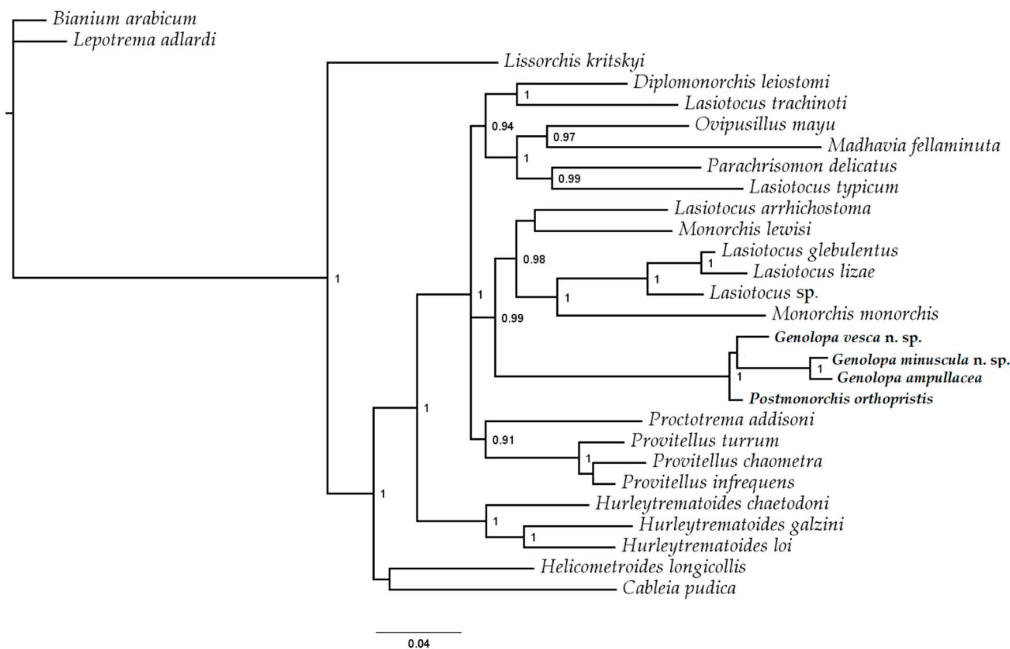


Figure 4. Interrelationships among members of the Monorchiidae based on Bayesian inference analysis of partial 28S rDNA data. Bayesian inference posterior probabilities are shown at the nodes; support values < 0.85 are not shown. *Genolopa-Postmonorchis* clade highlighted with bold text.

Importantly, the present phylogeny supports that *Genolopa* is a distinct lineage from *Lasiotocus*, *Parachrisomon*, and *Proctotrema* at the generic level. Pairwise comparisons of variable sites of the 28S rDNA gene among species of *Genolopa* and *Postmonorchis* are presented in Table 3. Sequences of *G. minuscula* n. sp. and *G. ampullacea* differed by 1.6% (19 bp). Sequences of *G. vesca* n. sp. and both *G. minuscula* n. sp. and *G. ampullacea* differed by 4.9% (57 bp). The sequence of *P. orthopristis* differed the least with *G. vesca* n. sp. by 2.1% (24 bp). Sequences of *P. orthopristis* and *G. minuscula* n. sp. differed by 3.9% (45 bp), and sequences of *P. orthopristis* and *G. ampullacea* differed by 4% (47 bp).

Table 3. Pairwise comparison among partial fragments (1163 base pairs long) of 28S rDNA from species of *Genolopa* and *Postmonorchis* in present study, shown as number of variable sites with (%) (above diagonal).

Species	<i>G. minuscula</i>	<i>G. ampullacea</i>	<i>G. vesca</i>	<i>P. orthopristis</i>
<i>P. orthopristis</i>	45 (3.9)	47 (4.0)	24 (2.1)	—
<i>G. minuscula</i>	—	19 (1.6)	57 (4.9)	—
<i>G. ampullacea</i>		—	57 (4.9)	—
<i>G. vesca</i>			—	—

The present phylogeny does not support a distinction between *Genolopa* and *Postmonorchis*, suggesting the two genera do not represent distinct generic lineages or more taxa are necessary to elucidate this relationship. The *Genolopa-Postmonorchis* clade is closely affiliated with a clade consisting

of species of *Monorchis* Monticelli, 1893 and some species of *Lasiotocus*. We also provide sequence data for three species of *Lasiotocus* that had no prior sequence data available (Appendix A). These new data further support that *Lasiotocus* is polyphyletic but at least some species of *Lasiotocus* are closely related to *Monorchis* [21].

4. Discussion

The estimated phylogeny of the Monorchiidae (Figure 4) was constructed using publicly available partial 28S rDNA sequence data from all genera thus far plus new material supported by vouchers; it also includes taxa from the Indo-Pacific Ocean, Mediterranean Sea, North Sea, and western Atlantic Ocean. Prior to the present study, molecular data were available for only two monorchiid species from the northwestern Atlantic Ocean: *Diplomonorchis leiostomi* Hopkins, 1941 and *Hurlytrematoides chaetodonti* (Manter, 1942) Yamaguti, 1954 [17,24]. This study contributed novel molecular data from six additional northwestern Atlantic Ocean monorchiid species in three genera. The novel molecular data from *Genolopa* spp. represent the first such available data for the genus, and novel molecular data from *Lasiotocus* spp. represent the first sequence data available from northwestern Atlantic species of that genus. As expected, the northwestern Atlantic species of *Lasiotocus* herein included did not represent a natural group as is apparent in this genus from other studies [14,21,39]; taxonomic and systematic problems among species of *Lasiotocus* will be the focus of a separate paper.

Interestingly, the novel molecular data from *P. orthopristis* does not represent the first available data for the genus; however, we disagree with the generic classification of these sequences (GenBank accession no. KC603478 [58] and MF374321 [59]) because one classification was made using the BLASTn tool with no morphological evidence derived from adult vouchers (MF374321), and the other was based on morphological examination of metacercariae, in which some of the key diagnostic features for *Postmonorchis* (uterus location and extent, spined cirrus, anteriorly spined terminal organ) are not yet manifested (KC603478). The two molecular data for *Postmonorchis* are publicly available partial 18S rDNA, complete ITS1, 5.8S rDNA, and ITS2, and partial 28S rDNA sequences. One is derived from metacercariae collected from the wedge clam in Italy (KC603478) [58], and the second is derived from the tissue of the European flat oyster in Italy (MF374321) [59]. The ITS2 sequences from both studies are identical; however, the published partial 28S rDNA sequences were too short to include with our analysis. We conducted a pairwise comparison of the ITS2 sequences from *Postmonorchis* sp. (KC603478) and our *P. orthopristis* material; there was a 26% bp difference between the two, suggesting *Postmonorchis* sp. (KC603478) is not actually a species in *Postmonorchis*. Our data are from morphologically identified adult material whereas *Postmonorchis* sp. (KC603478) data are based on metacercariae. This unidentified species may be included in analyses of the Monorchiidae once more ITS2 and 28S rDNA sequences become available.

The presented phylogeny provides evidence suggesting *Genolopa* represents a distinct evolutionary lineage that is closely related to *Postmonorchis* and distinct from *Parachrisomon*, *Proctotrema*, and *Lasiotocus*, three genera to which *Genolopa* is morphologically similar and that have available molecular data [14–17]. Similar to previous analyses, *Lasiotocus* is polyphyletic [14,21,39]. The present study contributed data from the type-species for *Genolopa* and *Postmonorchis*, but unfortunately, no molecular data are yet available from the type-species for *Parachrisomon*, *Proctotrema*, or *Lasiotocus*. Sequence data from the type-species is needed to determine the true lineage of *Lasiotocus*. We made several attempts to collect *Lasiotocus mulli* (Stossich, 1883) Odhner, 1911 (type-species) but were unsuccessful. Ferrer-Maza et al. [60] represents the most recent report of *L. mulli* collected in the Mediterranean Sea, but personal communication with the primary author revealed that the prevalence of *L. mulli* was very low in her study. Over 300 specimens of the definitive host were examined, and only 5 specimens of *L. mulli* were found.

The absence of molecular data from type-species for these related genera prevent us from making serious inferences regarding interrelationships among these five morphologically similar genera. Nevertheless, the novel molecular data from *Genolopa* spp. serve to confirm that the primary diagnostic

features for the genus (the presence of spines in the genital atrium along with the presence of a bipartite, anteriorly spined terminal organ), as proposed by Manter [8], serve reliably. Species in *Proctotrema* do not have spines in the genital atrium, and they have a unipartite terminal organ. Species in both *Lasiotocus* and *Parachrisomon* do not have spines in the genital atrium, and species in *Parachrisomon*, uniquely among these morphologically similar genera, have a vitellarium distributed well into the hindbody [1].

Despite the close similarity and phylogenetic relationship exhibited between *Genolopa* and *Postmonorchis*, there are several obvious morphologic differences between the genera ([1,20], present study). Species of *Postmonorchis* are smaller and oval compared with species of *Genolopa* that are larger and elongate. The uterus is mostly intercecal, with portions overlapping the ceca, with only a small portion extending into extracecal space in species of *Genolopa*, whereas the uterus is mostly extracecal and overlapping the ceca with only a small portion extending into the intercecal space in species of *Postmonorchis*. Furthermore, the uterus extends from the cecal bifurcation to the testis, not posterior to the testis, in species of *Postmonorchis*, but the uterus extends from the genital pore to posterior to the testis in species of *Genolopa*. The size of the cirrus sac is larger relative to body size in species of *Postmonorchis* (approximately 1/3 body size) compared with that in species of *Genolopa*. The testis is located at the posterior end in species of *Postmonorchis* but is located more medially in species of *Genolopa*. Finally, and perhaps most importantly, species of *Genolopa* have spines in the genital atrium whereas species of *Postmonorchis* do not have spines in the genital atrium based on the original generic description and the description of the type-species by Hopkins [11].

We accept *Genolopa* as a valid genus based on the evidence provided in this study. *Genolopa* currently contains 13 nominal species (Table 4). However, the authorities for only 3 of the 13 species attempted to discuss or illustrated the presence of spines in the genital atrium in conjunction with an anteriorly spined, bipartite terminal organ in original descriptions: *G. ampullacea*, *G. plectorhynchi*, and *G. mugilis* [8,56,61]. Therefore, tentatively we do not agree with the placement of the other nominal species in *Genolopa* and consider them to be *incertae sedis* with a few violating the diagnosis of the family. The type materials from these species should be reexamined to determine whether genital atrium spines are present and if the terminal organ is bipartiate and spined anteriorly to confirm if these species represent acceptable species of *Genolopa*. The genital atrium spines described or illustrated in *G. plectorhynchi*, *G. brevicaecum* and *G. mugilis* resemble cirrus spines in size and shape. Consequently, type materials of *G. plectorhynchi*, *G. brevicaecum* and *G. mugilis* should also be examined to clarify if the genital atrium spines are from a partially extruded cirrus or are in fact spines associated with the genital atrium. Moreover, representatives of these confounding species should be sequenced to verify their generic status.

Table 4. Nominal species of *Genolopa*.

Species	Authority
<i>Genolopa ampullacea</i> *	Linton, 1910
<i>Genolopa anisotremi</i> **	(Nahhas and Cable, 1964) Yamaguti, 1971
<i>Genolopa brevicaecum</i> **	(Manter, 1942) Manter and Pritchard, 1961
<i>Genolopa bychowskii</i> **	Zhukov, 1977
<i>Genolopa cheilini</i> **	Nagaty and Abdel-Aal, 1972
<i>Genolopa lobarchis</i> **	Wang, 1977
<i>Genolopa lunulata</i> **	Nagaty and Abdel-Aal, 1972
<i>Genolopa magnacirrus</i> **	Thatcher, 1996
<i>Genolopa microsoma</i> **	Lebedev, 1968
<i>Genolopa mintungensis</i> **	Wang, 1975
<i>Genolopa mugilis</i>	Knoff and Amato, 1992
<i>Genolopa plectorhynchi</i>	(Yamaguti, 1934) Hopkins, 1941
<i>Genolopa pritchardae</i> **	(Nahhas and Cable, 1964) Yamaguti, 1971

* Indicates type-species of the genus. ** Species considered *incertae sedis*.

Investigation of type material for *Genolopa longicaudata* Siddiqi and Cable, 1960 is also needed to clarify the validity of this species or its synonymy with *G. ampullacea*. Siddiqi and Cable [62] described *G. longicaudata* and differentiated it from *G. ampullacea* based on the post-testicular space and length of the terminal organ. We do not believe these are the appropriate features to use to distinguish the two species, if indeed they represent two species, because these features can exhibit high levels of variability in monorchiids. At present, we tentatively accept the validity of *G. longicaudata* because we believe hindbody size and a more anteriorly located ventral sucker (based on observations of illustrations and scale measurements by Siddiqi and Cable [62]) serve to better differentiate *G. longicaudata*. Forebody and hindbody lengths are 18.7% and 77% of overall body length, respectively, in the illustration of *G. longicaudata*, or close to one fifth of the body length. Siddiqi and Cable [62] stated that the ventral sucker of *G. longicaudata* is approximately one fifth the body length from the anterior end. Our observations of forebody and hindbody lengths of *G. ampullacea* range from 29–36% and 57–65% of body length, respectively (based on measurements of the type material and our newly collected material). The ventral sucker of *G. ampullacea* is located at approximately the anterior one third of the body length [8], showing these metrics are quite different between the species.

It is very difficult to decide on the validity of *G. ampullacea* from other reports without those reports having extensive descriptions, and very few do this; also, there is a need for molecular data. Many of these reports are not taxonomic papers; many are parasite community investigations of hosts from specific locations. No information about *G. ampullacea* other than host is provided in the reports by Manter [43], Sogandares-Bengal [45], Nahhas and Cable [46], Rees [47], Fischthal [49], Centeno and Bashirullah [51], and Bashirullah and Díaz [52]. The hosts listed from those reports (various grunt species) are like those of accurately identified specimens of *G. ampullacea*; however, without any additional information, we do not know if they are accurate identifications. Overstreet [63] noted some slight differences between his specimens of *G. ampullacea* and those by earlier works such as mostly smaller eggs, a distinctly trilobed ovary, and a pyriform oral sucker, but without a more detailed description of his specimens and molecular data, we are not sure if this is a valid report of *G. ampullacea*. Lozano et al. [64] reported *G. ampullacea* from the Iberian Peninsula (new location) and a similar host species (another grunt), but the few measurements provided, such as body size, pharynx size, and cirrus sac size, are much larger indicating that these specimens are likely not *G. ampullacea*. The specimens of *G. ampullacea* described from Mosquera et al. [65] had a distinctly trilobed ovary and much larger genital atrium spines suggesting they are likely not *G. ampullacea*.

To summarize, *Genolopa* has been provisionally considered synonymous with other genera (*Lasiotocus*, *Proctotrema*, *Parachrisomon*, *Proctotrematoides*, *Paraproctotrema*, and *Monorchicestrahelmins*) based on incomplete morphological data regarding terminal genitalia spination available for material. Our phylogenetic analysis indicates that *Genolopa* likely represents a distinct lineage from those genera and is closely related to *Postmonorchis*, a genus ironically with which it has not been confused or associated as a close relative due to several distinct morphological differences. Therefore, like Madhavi [1], we agree with Manter [8] in believing that the combination of spines in the genital atrium and a bipartite, anteriorly spined terminal organ represent cornerstones for the generic diagnosis of *Genolopa*. We also acknowledge the need for morphologic investigation of the other species of *Genolopa* considered *incertae sedis* and the need for additional molecular data to determine if these features consistently determine species of *Genolopa* or possibly just form a western Atlantic clade and to better clarify interrelationships within the Monorchiidae.

Supplementary Materials: The following are available online at <http://www.mdpi.com/1424-2818/12/2/51/s1>.

Author Contributions: Conceptualization, A.J.P., S.S.C. and R.M.O.; methodology, A.J.P., S.S.C. and R.M.O.; formal analysis, A.J.P. and S.S.C.; investigation, A.J.P. and S.S.C.; resources, R.M.O.; data curation, A.J.P.; writing—original draft preparation, A.J.P.; writing—review and editing, A.J.P., S.S.C. and R.M.O.; visualization, R.M.O.; supervision, R.M.O.; project administration, A.J.P.; funding acquisition, A.J.P. and R.M.O. All authors have read and agreed to the published version of the manuscript.

Funding: This research was funded in part by a grant from BP Exploration and Production, Inc. for R.M.O. It was also funded in part by the Robin M. Overstreet Coastal Sciences Endowment through The University of Southern Mississippi received by A.J.P. in 2017 and 2018. Some of the fish hosts were collected pursuant to FL SAL-16-0942-SR.

Acknowledgments: We would like to thank C. Hubbard; A. Claxton; A. Kuhn, N. Dix and the Guana Tolomato Matanzas National Estuarine Research Reserve (GTM NERR); and M. Sullivan, his undergraduate students, and the staff of the Marine Field Station at Stockton University for field assistance. We thank V. Tkach, J. Jovonovich Al Villar, J. Wright, and B. Jones for assistance with the molecular aspects of data collection. We also thank M. Andres for initial feedback on the manuscript structure, input on phylogenetic analysis techniques, and assistance with GenBank submissions, A. Phillips and A. Robinson for loaning type and voucher specimens, and A. Phillips and K. Ahlfeld for providing museum accession numbers.

Conflicts of Interest: The authors declare no conflict of interest. The funders had no role in the design of the study; in the collection, analyses, or interpretation of data; in the writing of the manuscript; or in the decision to publish the results.

Appendix A

Supplemental Molecular Data

Postmonorchis orthopristis Hopkins, 1941.

Host: *Haemulon flavolineatum* Desmarest, 1823, French grunt, Haemulidae.

Locality: Upper Matecumbe Key, Florida, USA (24°53'52.36" N, 80°39'33.84" W).

Site: intestine.

Specimens deposited: USNM 1611660, 1611661 (2 vouchers); USNM 1611659 (1 hologenophore).

Sequences deposited: Partial 28S rDNA, 2 replicates, one hologenophore, one paragenophore, (hologenophore submitted to GenBank: accession number MN984475); ITS2 rDNA, one hologenophore (submitted to GenBank: accession number MN984475).

Remarks: Our specimens agree well with the description by Hopkins (1941).

Lasiotocus trachinoti Overstreet and Brown, 1970.

Host: *Trachinotus carolinus* Linnaeus, 1766, Florida pompano, Carangidae.

Locality: Jacksonville, Florida, USA (30°01'25.8" N, 81°19'21.9" W).

Sites: intestine, pyloric ceca.

Specimens deposited: USNM 1611664, 1611665, 1611666 (3 vouchers).

Sequences deposited: All paragenophores; partial 28S rDNA, 6 replicates (one submitted to GenBank accession number MN984478); ITS2 rDNA, 6 replicates (one submitted to GenBank: accession number MN984478).

Remarks: Our specimens agree well with the description by Overstreet and Brown [66].

Lasiotocus glebulentus Overstreet, 1971.

Host: *Mugil curema* Valenciennes, 1836, white mullet, Mugilidae.

Locality: Beaufort, North Carolina, USA (34°41'03.5" N, 76°31'42.7" W).

Sites: intestine.

Specimens deposited: USNM 1611662, 1611663 (2 vouchers).

Sequences deposited: All paragenophores; partial 28S rDNA, 4 replicates (one submitted to GenBank: accession number MN984476).

Remarks: Our specimens agree well with the description by Overstreet [27].

Lasiotocus sp. unidentified

Host: *Menidia menidia* Linnaeus, 1766, Atlantic silverside, Atherinopsidae.

Locality: Great Bay Estuary, New Jersey, USA (39°31'11.0" N, 74°21.08.1" W).

Sequences deposited: Partial 28S rDNA, 2 replicates (one submitted to GenBank: accession number MN984477).

Remarks: Our specimens were in a condition too poor for species-level identification.

References

1. Madhavi, R. Family Monorchiidae Odhner, 1911. In *Keys to the Trematoda*; Bray, R.A., Gibson, D.I., Jones, A., Eds.; CAB International and Natural History Museum: Cambridge, MA, USA, 2008; pp. 145–175. ISBN 978.
2. Yamaguti, S. *A synoptical review of the life histories of digenetic trematodes of vertebrates*, 1st ed.; Yugaku-Sha, Ltd.: Tokyo, Japan, 1975.
3. Gilardoni, C.; Carballo, M.C.; Cremonte, F. The life cycle and geographical distribution of the monorchiid *Proctotrema bartolii* (Digenea) in the clam *Darina solenoides* from the Patagonian coast, Argentina. *J. Helminthol.* **2013**, *87*, 392–399. [[CrossRef](#)]
4. Bartoli, P.; Jousson, O.; Russell-Pinto, F. The life cycle of *Monorchis parvus* (Digenea: Monorchiidae) demonstrated by developmental and molecular data. *J. Parasitol.* **2000**, *86*, 479–489. [[CrossRef](#)]
5. Young, R.T. *Postmonorchis donacis*, a new species of monorchid trematode from the Pacific coast, and its life history. *J. Wash. Acad. Sci.* **1953**, *43*, 88–93.
6. Bagnato, E.; Gilardoni, C.; Pina, S.; Rodrigues, P.; Cremonte, F. Redescription and life cycle of the monorchiid *Postmonorchoides maclovini* Szidat, 1950 (Digenea) from the Southwestern Atlantic Ocean: morphological and molecular data. *Parasitol. Int.* **2016**, *65*, 44–49. [[CrossRef](#)]
7. Manter, H.W. Some digenetic trematodes of marine fishes of Beaufort, North Carolina. *Parasitology* **1931**, *23*, 396–411. [[CrossRef](#)]
8. Manter, H.W. Monorchiidae (Trematoda) from fishes of Tortugas, Florida. *Trans. Am. Microsc. Soc.* **1942**, *61*, 349–360. [[CrossRef](#)]
9. Manter, H.W.; Pritchard, M.H. Studies on the digenetic trematodes of Hawaiian fishes: families Monorchiidae and Haploporidae. *J. Parasitol.* **1961**, *47*, 483–492. [[CrossRef](#)]
10. Thomas, J.D. Trematodes of Ghanian sub-littoral Fishes. I. The Family Monorchiidae. *J. Parasitol.* **1959**, *45*, 95–113. [[CrossRef](#)]
11. Hopkins, S.H. New genera and species of the family Monorchiidae (Trematoda), with a discussion of the excretory system. *J. Parasitol.* **1941**, *27*, 395–407. [[CrossRef](#)]
12. Yamaguti, S. *Synopsis of Digenetic Trematodes of Vertebrates*; Keigaku: Tokyo, Japan, 1971.
13. Machida, M. Monorchiidae (Trematoda, Digenea) from fishes of Japanese and adjacent Waters. *Bull. Natl. Sci. Mus. Tokyo Ser. A Zool.* **2005**, *31*, 123–136.
14. Wee, N.Q.X.; Cutmore, S.C.; Cribb, T.H. Two monorchiid species from the freckled goatfish, *Upeneus tragula* Richardson (Perciformes: Mullidae), in Moreton Bay, Australia, including a proposal of a new genus. *Syst. Parasitol.* **2018**, *95*, 353–365. [[CrossRef](#)]
15. Searle, E.L.; Cutmore, S.C.; Cribb, T.H. Monorchiid trematodes of the painted sweetlips, *Diagramma labiosum* (Perciformes: Haemulidae), from the southern Great Barrier Reef, including a new genus and three new species. *Syst. Parasitol.* **2014**, *88*, 195–211. [[CrossRef](#)]
16. Atopkin, D.M.; Besprozvannykh, V.V.; Ngo, H.D.; Van Ha, N.; Van Tang, N.; Ermolenko, A.V.; Beloded, A.Y. Morphometric and molecular data of the two digenean species *Lasiotocus lizae* Liu, 2002 (Monorchiidae) and *Paucivitellosus vietnamensis* sp. n. (Bivesiculidae) from mullet fish in Tonkin Bay, Vietnam. *J. Helminthol.* **2017**, *91*, 346–355. [[CrossRef](#)]
17. Olson, P.D.; Cribb, T.H.; Tkach, V.V.; Bray, R.A.; Littlewood, D.T.J. Phylogeny and classification of the Digenea (Platyhelminthes: Trematoda). *Int. J. Parasitol.* **2003**, *33*, 733–755. [[CrossRef](#)]
18. McNamara, M.K.A.; Miller, T.L.; Cribb, T.H. Evidence for extensive cryptic speciation in trematodes of butterflyfishes (Chaetodontidae) of the tropical Indo-West Pacific. *Int. J. Parasitol.* **2014**, *44*, 37–48. [[CrossRef](#)]
19. Tkach, V.V.; Pawlowski, J.; Mariaux, J.; Swiderski, Z. Molecular phylogeny of the suborder Plagiorchiata and its position in the system of Digenea. In *Interrelationships of the Platyhelminthes*; Littlewood, D.T.J., Bray, R.A., Eds.; Taylor & Francis: London, UK, 2001; pp. 186–193.
20. Jousson, O.; Bartoli, P.; Pawlowski, J. Cryptic speciation among intestinal parasites (Trematoda: Digenea) infecting sympatric host fishes (Sparidae). *J. Evol. Biol.* **2000**, *13*, 778–785. [[CrossRef](#)]
21. Cribb, T.H.; Wee, N.Q.X.; Bray, R.A.; Cutmore, S.C. *Monorchis lewisi* n. sp. (Trematoda: Monorchiidae) from the surf bream, *Acanthopagrus australis* (Sparidae), in Moreton Bay, Australia. *J. Hazard. Mater.* **2018**, *92*, 100–108. [[CrossRef](#)]

22. Bray, R.A.; Palm, H.W.; Cutmore, S.C.; Cribb, T.H. Three members of Opisthomonorchaeidae Parukhin, 1966 (Digenea: Monorchidae) from carangid fishes (Perciformes) from Indonesia, with a review of the genus. *Syst. Parasitol.* **2017**, *94*, 443–462. [[CrossRef](#)]
23. Bagnato, E.; Gilardoni, C.; Di Giorgio, G.; Cremonese, F. A checklist of marine larval trematodes (Digenea) in molluscs from Argentina, Southwestern Atlantic coast. *J. Biodivers. Data* **2015**, *11*, 1–10. [[CrossRef](#)]
24. Andres, M.J.; Pulis, E.E.; Curran, S.S.; Overstreet, R.M. On the systematics of some marine haploporids (Trematoda) with the description of a new species of *Megasolena* Linton, 1910. *Parasitol. Int.* **2018**, *67*, 805–815. [[CrossRef](#)]
25. Cribb, T.H.; Bray, R.A. Gut wash, body soak, blender and heat-fixation: approaches to the effective collection, fixation and preservation of trematodes of fishes. *Syst. Parasitol.* **2010**, *76*, 1–7. [[CrossRef](#)]
26. Curran, S.S.; Overstreet, R.M.; Tkach, V.V. Phylogenetic affinities of *Plagiocirrus* Van Cleave and Mueller, 1932 with the description of a new species from the Pascagoula River, Mississippi. *J. Parasitol.* **2007**, *93*, 1452–1458. [[CrossRef](#)]
27. Overstreet, R.M. Some adult digenetic trematodes in striped mullet from the Northern Gulf of Mexico. *J. Parasitol.* **1971**, *57*, 967–974. [[CrossRef](#)]
28. Pleijel, F.; Jondelius, U.; Norlinder, E.; Nygren, A.; Oxelman, B.; Schander, C.; Sundberg, P.; Thollesson, M. Phylogenies without roots? A plea for the use of vouchers in molecular phylogenetic studies. *Mol. Phylogenet. Evol.* **2008**, *48*, 369–371. [[CrossRef](#)]
29. Tkach, V.V.; Snyder, S.D. *Aptorchis megacetabulus* n. sp. (Platyhelminthes: Digenea) from the northern long-necked turtle, *Chelodina rugosa* (Pleurodira: Chelidae), in Australia. *J. Parasitol.* **2007**, *93*, 404–408. [[CrossRef](#)]
30. Curran, S.S.; Tkach, V.V.; Overstreet, R.M. A review of *Polylekithum* Arnold, 1934 and its familial affinities using morphological and molecular data, with description of *Polylekithum catahouleensis* sp. nov. *Acta Parasitol.* **2006**, *51*, 238–248. [[CrossRef](#)]
31. Littlewood, D.T.J. Molecular phylogenetics of cupped oysters based on Partial 28S rRNA Gene Sequences. *Mol. Phylogenet. Evol.* **1994**, *3*, 221–229. [[CrossRef](#)]
32. Keller, A.; Schleicher, T.; Schultz, J.; Müller, T.; Dandekar, T.; Wolf, M. 5.8S-28S rRNA interaction and HMM-based ITS2 annotation. *Gene* **2009**, *430*, 50–57. [[CrossRef](#)]
33. Ankenbrand, M.J.; Keller, A.; Wolf, M.; Schultz, J.; Förster, F. ITS2 database V: Twice as much. *Mol. Biol. Evol.* **2015**, *32*, 3030–3032. [[CrossRef](#)]
34. Sela, I.; Ashkenazy, H.; Katoh, K.; Pupko, T. Guidance 2: Accurate detection of unreliable alignment regions accounting for the uncertainty of multiple parameters. *Nucleic Acids Res.* **2015**, *43*, W7–W14. [[CrossRef](#)]
35. Landan, G.; Graur, D. Local reliability measures from sets of co-optimal multiple sequence alignments. In Proceedings of the Pacific Symposium on Biocomputing, Kohala Coast, HI, USA, 4–8 January 2008; pp. 15–24.
36. Huelsenbeck, J.P.; Ronquist, F. MRBAYES: Bayesian inference of phylogenetic trees. *Bioinform. Appl. Note* **2001**, *17*, 754–755. [[CrossRef](#)]
37. Ronquist, F.; Teslenko, M.; Van Der Mark, P.; Ayres, D.L.; Darling, A.; Höhna, S.; Larget, B.; Liu, L.; Suchard, M.A.; Huelsenbeck, J.P. Mrbayes 3.2: Efficient bayesian phylogenetic inference and model choice across a large model space. *Syst. Biol.* **2012**, *61*, 539–542. [[CrossRef](#)]
38. Darriba, D.; Taboada, G.L.; Doallo, R.; Posada, D. jModelTest 2: More models, new heuristics and parallel computing. *Nat. Methods* **2012**, *9*, 772. [[CrossRef](#)]
39. Wee, N.Q.X.; Cutmore, S.C.; Cribb, T.H. Four new monorchids from the golden trevally, *Gnathanodon speciosus* (Forsskål) (Perciformes: Carangidae), in Moreton Bay, Australia. *Syst. Parasitol.* **2019**, *96*, 265–278. [[CrossRef](#)]
40. Rambaut, A.; Drummond, A.J. FigTree Version 1.4. 2012.
41. Bray, R.A.; Cribb, T.H.; Cutmore, S.C. Lepocreadiidae Odhner, 1905 and Aephaniogenidae Yamaguti, 1934 (Digenea: Lepocreadioidea) of fishes from Moreton Bay, Queensland, Australia, with the erection of a new family and genus. *Syst. Parasitol.* **2018**, *95*, 479–498. [[CrossRef](#)]
42. Bray, R.A.; Cutmore, S.C.; Cribb, T.H. *Lepotrema* Ozaki, 1932 (Lepocreadiidae: Digenea) from Indo-Pacific fishes, with the description of eight new species, characterised by morphometric and molecular features. *Syst. Parasitol.* **2018**, *95*, 693–741. [[CrossRef](#)]

43. Manter, H.W. The digenetic trematodes of marine fishes of Tortugas, Florida. *Am. Midl. Nat.* **1947**, *38*, 257. [[CrossRef](#)]
44. Sparks, A.K. Some digenetic trematodes of marine fishes of the Bahama Islands. *Bull. Mar. Sci.* **1957**, *7*, 255–265.
45. Sogandares-Bernal, F. Digenetic trematodes of marine fishes from the Gulf of Panama and Bimini, British West Indies. *Tulane Stud. Zool.* **1959**, *7*, 71–117.
46. Nahhas, F.M.; Cable, R.M. Digenetic and aspidogastriid trematodes from marine fishes of Curaçao and Jamaica. *Tulane Stud. Zool.* **1964**, *11*, 169–228. [[CrossRef](#)]
47. Rees, G. Some helminth parasites of fishes of Bermuda and an account of the attachment organ of *Alcicornis carangis* Maccallum, 1917 (Digenea: Bucephalidae). *Parasitology* **1970**, *60*, 195–221. [[CrossRef](#)] [[PubMed](#)]
48. Nagaty, H.F.; Abdel-Aal, T.M. Trematodes of fishes from the Red Sea, Part 20. On four monorchids, including a new genus and three new species. *J. Egypt. Veterinary Med. Assoc.* **1972**, *32*, 207–213.
49. Fischthal, J.H. Some sigenetic trematodes of marine fishes from the barrier reef and reef lagoon of Belize. *Zool. Scr.* **1977**, *6*, 81–88. [[CrossRef](#)]
50. Kohn, A.; Macedo, B.; Fernandes, B.M.M. About some trematodes parasites of *Haemulon sciurus* (Shaw, 1803). *Mem. Inst. Oswaldo Cruz* **1982**, *77*, 153–157. [[CrossRef](#)]
51. Centeno, L.; Bashirullah, A. Comunidades de parásitos metazoos en ocho especies de peces del género *Haemulon* (FAM: Haemulidae) del Golfo de Cariaco, Venezuela. *Ciencia* **2003**, *11*, 119–124.
52. Bashirullah, A.K.; Díaz, M.T. Helminth infracommunity of *Haemulon aurolineatum* Cuvier, 1830 (Haemulidae) from the Gulf of Cariaco, Venezuela. *Rev. Cient. la Fac. Ciencias Vet. la Univ. del Zulia* **2015**, *25*, 167–172.
53. Dyer, W.; Williams, E.; Bunkley-Williams, L. *Homalometron dowgialloi* sp. n. (Homalometridae) from *Haemulon flavolineatum* and additional records of digenetic trematodes of marine fishes in the West Indies. *J. Helminthol. Soc. Wash.* **1992**, *59*, 182–189.
54. Curran, S.S.; Overstreet, R.M.; Tat The, D.; Thi Le, N. *Singhiatrema vietnamensis* sp. n. (Digenea, Ommatobrephidae) and *Szidatia taiwanensis* (Fischthal and Kuntz, 1975) comb. n. (Digenea: Cyathocotyliidae) from colubrid snakes in Vietnam. *Comp. Parasitol.* **2001**, *68*, 219–227.
55. Curran, S.S.; Tkach, V.V.; Overstreet, R.M. A new species of *Homalometron* (Digenea: Apocreadiidae) from fishes in the Northern Gulf of Mexico. *J. Parasitol.* **2013**, *99*, 93–101. [[CrossRef](#)]
56. Linton, E. Helminth Fauna of the Dry Tortugas. *Pap. Tortugas Lab. Carnegie Inst. Wash.* **1910**, *1*, 157.
57. Parasitology Laboratory. Investigation of parasites in sea eel from Fujian. *J. Fujian Norm. Univ. Nat. Sci. Ed.* **1976**, *1*, 108–112.
58. Carella, F.; Culurgioni, J.; Aceto, S.; Fichi, G.; Pretto, T.; Luise, D.; Gustinelli, A.; De Vico, G. *Postmonorchis* sp. inq. (Digenea: Monorchidae) metacercariae infecting natural beds of wedge clam *Donax trunculus* in Italy. *Dis. Aquat. Org.* **2013**, *106*, 163–172. [[CrossRef](#)]
59. Mancini, E.; Furfaro, G.; Cervelli, M.; Di Giulio, A.; Oliverio, M.; Salvi, D.; Mariottini, P. Molecular detection of parasites (Trematoda, Digenea: Bucephalidae and Monorchidae) in the European flat oyster *Ostrea edulis* (Mollusca: Bivalvia). *Eur. Zool. J.* **2018**, *85*, 8–16. [[CrossRef](#)]
60. Ferrer-Maza, D.; Muñoz, M.; Lloret, J.; Faliex, E.; Vila, S.; Sasal, P. Health and reproduction of red mullet, *Mullus barbatus*, in the western Mediterranean Sea. *Hydrobiologia* **2015**, *753*, 189–204. [[CrossRef](#)]
61. Knoff, M.; Amato, J.F. Nova especie do genero *Genolopa* Linton, 1910 (Monorchidae, Lasiotocinae) parasite de tainha, *Mugil platanus* Gunther, 1880 da costa de estado do Rio de Janeiro, Brasil *. *Rev. Bras. Biol.* **1991**, *51*, 801–804.
62. Siddiqi, A.H.; Cable, R.M. Digenetic trematodes of marine fishes of Puerto Rico. *Scientific Survey of Porto Rico and the Virgin Islands* **1960**, *17*, 256–369.
63. Overstreet, R.M. Digenetic trematodes of marine teleost fishes from Biscayne Bay, Florida. *Tulane Stud. Zool. Bot.* **1969**, *15*, 119–176.
64. Lozano, C.; Úbeda Ontiveros, J.; Rojas Álvarez, M.; Ariza Astolfi, C.; Guevara Benítez, D. Estudio de digenidos de peces marinos del sur de la Península Ibérica. *Rev. Iber. Parasitol.* **2001**, *61*, 103–116.

65. Mosquera, O.; Mago, Y.; Chinchilla, O. Finding of *Genolopa ampullacea* Linton, 1910 (Digenea: Monorchidae, Monorchinae) in *Haemulon bonariense* Cuvier, 1830 from Mochima Bay, Sucre State, Venezuela. *Saber* **2014**, *26*, 121–126.
66. Overstreet, R.M.; Brown, C.E. *Lasiotocus trachinoti* sp. n. (Digenea: Monorchidae) from the pompano, *Trachinotus carolinus* (Linnaeus), along the East Coast of Florida. *J. Parasitol.* **1970**, *56*, 941–943. [[CrossRef](#)]



© 2020 by the authors. Licensee MDPI, Basel, Switzerland. This article is an open access article distributed under the terms and conditions of the Creative Commons Attribution (CC BY) license (<http://creativecommons.org/licenses/by/4.0/>).