



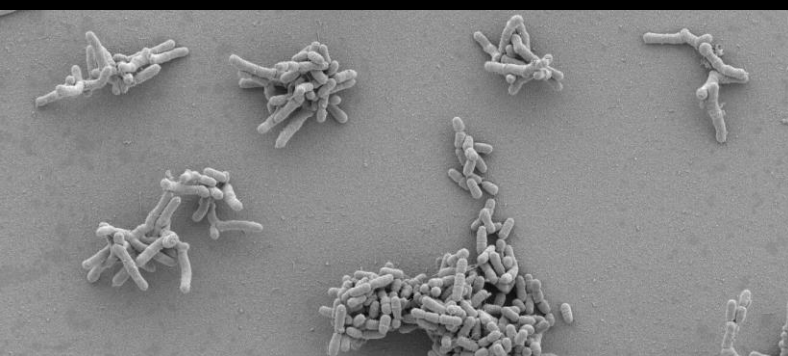
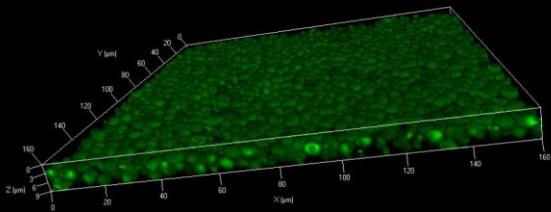
الجامعة الإسلامية العالمية ماليزيا
INTERNATIONAL ISLAMIC UNIVERSITY MALAYSIA
يُونِيسْكَوِي اِسْلَامِي اِنْتَارَا اَبْحَثِيَا مِلْسِيَا

Garden of Knowledge and Virtue

IJOHS

*International Journal
of Orofacial and
Health Sciences*

A scientific journal
published by Kulliyah of
Dentistry, IIUM, Malaysia



ISSN 2716-5434



9 772716 543003

VOL. 1 ISSUE 1

2020



International Journal of Orofacial and Health Sciences

Editorial Board

Chief Editor	: Professor Dr. Zainul Ahmad Rajion
Editor	: Dr. Salwana Supa'at
	: Dr. Basma Ezzat Mustafa Alahmad
	: Assoc. Prof. Dr. Khairani Idah Mokhtar@Makhtar
	: Assoc. Prof. Dr. Solachuddin J.A. Ichwan
	: Assoc. Prof. Dr. Muhannad Ali Kashmoola
	: Dr. Widya Lestari
	: Dr. Azlini Ismail
	: Dr. Mohd Hafiz Arzmi
	: Dr. Mohamad Shafiq Mohd Ibrahim

Aims and Scope:

International Journal of Orofacial and Health Sciences (IJOHS) is a peer reviewed biannual international journal dedicated to publish high quality of scientific research in the field of orofacial sciences, health sciences and interdisciplinary fields, including basic, applied and clinical research. The journal welcomes review articles, original research, case reports and letters to the editor. Areas that are covered include but are not limited to dental sciences, oral microbiology and immunology, oral maxillofacial and craniofacial surgery and imaging, dental stem cells and regenerative medicine, dental biomaterial, oral maxillofacial genetic and craniofacial deformities.

Published by:

Kulliyah of Dentistry,
International Islamic University Malaysia (IIUM),
Indera Mahkota,
25200 Kuantan, Pahang, Malaysia.

Printed and distributed by:

Kulliyah of Dentistry,
International Islamic University Malaysia (IIUM),
Indera Mahkota,
25200 Kuantan, Pahang, Malaysia.

All rights reserved; No part of this publication maybe reproduced, stored in a retrieval system, or transmitted in any form, or by any means, electronic or otherwise, without prior permission of the publisher.

CONTENTS

EDITORIAL

Introduction to IJOHS 3

REVIEW ARTICLES

Genetics of malocclusion: A review 4

ORIGINAL ARTICLES

Potential antibacterial effects of flaxseed and *Nigella sativa* extracts on *Streptococcus pyogenes* 11

Dental treatment needs among patients undergoing screening at a university-based dental institution in Kuantan, Pahang, Malaysia 18

Analysis of the anti-cancer effect of ethyl-p-methoxycinnamate extracted cekur (*Kaempferia galanga*) on cancer cell lines with wild-type and null p53 28

Radiographic findings in panoramic radiographs of patients attending Kulliyah of Dentistry, IIUM 34

Isolation of *Candida* species in children and their biofilm-forming ability on nano-composite surfaces 40

REVIEW ARTICLE

Genetics of malocclusion: A review

Khairani Idah Mokhtar^{1*}, Noraini Abu Bakar², Aisyah Hanani Bt Md Ali @ Tahir³

¹Department of Fundamental Dental and Medical Sciences, Kulliyah of Dentistry, IIUM Kuantan Campus.

²Department of Orthodontics, Kulliyah of Dentistry, IIUM Kuantan Campus,

³Department of Biomedical Science, Kulliyah of Allied Health Sciences, IIUM Kuantan Campus.

Abstract

Malocclusion is one of the most common craniofacial problems observed worldwide. Affected individuals suffer not only from aesthetic concerns but also from functional problems, such as with mastication and pronunciation. The prevalence of malocclusion in East Asians is higher than in other races. Reports have shown besides environmental factors, there is association between certain types of malocclusion with specific genes. Positive association of mandibular prognathism has been implicated to genes such as *Matrilin-1*; while mutation in *DUSP6* has also been shown to contribute to the incidence of malocclusion. This review aimed to briefly discuss the involvement of other additional genes such as *MYO1H* and *PAX9* in the incidence of malocclusion as observed from our local institution.

Keywords: malocclusion, genes

*Corresponding Author

Email address: drkhairani@iium.edu.my

Tel: +6013-927 8779

Introduction

Malocclusion is one of the most common dental problems in mankind, together with dental caries, gingival disease and dental fluorosis (Dhar *et al.*, 2007). A malocclusion is defined as an irregularity of the teeth or a mal-relationship of the dental arches beyond the range of what is accepted as normal (Walther *et al.*, 1994). Malocclusion should not be considered as abnormal or pathological, instead as a variation of occlusion in a continuous multifactorial trait (Nishio *et al.*, 2016).

Nonetheless, the condition of malocclusion may lead to distorted facial appearance, limited masticatory function, increased risk of dental trauma and compromise the quality of life (Claudino *et al.*, 2013).

Classification of skeletal and dental malocclusion

The deviations from normal occlusion can be presented clinically from skeletal and/or dental. Skeletal discrepancy is caused by the distortion of the proper mandibular and/or maxillary growth during fetal development (Joshi *et al.*, 2014). This can occur in any three plan of space:

anteroposterior, vertical and transverse (Alhammedi, 2019). Salzmann in 1950 was among the first to classify to the underlying skeletal structure into Class I, Class II (convex profile) and Class III (concave profile).

Dental malocclusion may be classified according to several classifications. One classification is by British Standard Institution (BSI, 1983) classifying the occlusion according to the incisor relationship, into Class I, Class II Division 1, Class II Division 2 and Class III. Class I incisor relationship is when the mandibular incisors edges occlude with or lie immediately below the cingulum plateau of the maxillary central incisors. Class II incisor relationship is subdivided into division 1 and division 2 according to the inclination of the upper incisors. Class II division 1 occurs when the maxillary central incisors are proclined (or with average inclination) with an increased overjet. Whereas, class II subdivision 2 happens when the maxillary central incisors are retroclined and the overjet can be minimum or maybe increased. Class III is when the mandibular incisors edges lie anterior to the cingulum plateau of the upper central incisors with the overjet reduced or reversed.

Angle classification used occlusal relationship of the first molar to classify type of malocclusion into three classes that are Class I, Class II and Class III (Weinberger, 1993). Class I molar relationship is characterized by normal mesio-distal relation of the jaws and dental arches, as indicated by the normal locking on eruption of the first permanent molars, at least in their mesio-distal relations, though one or more may be in buccal or lingual occlusion. Class II molar relationship can be explained by the molar relationship shows the buccal groove of the mandibular first molar distally positioned when in occlusion with the

mesio-buccal cusp of the maxillary first molar.

On the other hand, Class III molar relationship is classified when the molar relationship shows the buccal groove of the mandibular first molar mesially positioned to the mesio-buccal cusp of the maxillary first molar when the teeth are in occlusion.

Prevalence of malocclusion

The prevalence of dental malocclusion in East Asians especially Class III is higher than in other races (Soh *et al.*, 2005). This has been supported by a finding by Chu *et al.* (2007), which compared their study with those from surveys of young Caucasians, Africans and Asians. This study showed that the prevalence of Class I malocclusion in Chinese adults was higher than that in Caucasian adults (48% versus 23%), but was similar to that of Asian (48%) or African (50%) young adults. The prevalence of Class III malocclusion in Chinese and in Asian adults is higher than that in African adults (20% versus 14%). Although Class II malocclusion is less common in the Chinese young adults, a study using peer assessment rating index reported that Class II malocclusion being more severe than Class I or III malocclusion in young Asian males (Soh *et al.*, 2005). While in the Northern part of Saudi Arabia, Class I malocclusion was dominant, followed by Class II and Class III, respectively (Alajlan *et al.*, 2019).

Hardy *et al.* (2012) through his meta-analysis study reported that, Chinese from Hong Kong and Malaysian showed a relatively higher prevalence of Angle Class III malocclusion. In addition, Indian populations showed a relatively lower prevalence as compared to other races (Hardy *et al.*, 2012). Our own demographic study showed that Class III

(according to BSI Incisor Classification) represents the majority of malocclusion cases observed in our local setting, whereby Malays constitute the highest number of orthodontic patients followed by Chinese and Indians (Ismail *et al.*, 2017). The prevalence data indicated that the occurrence of different types of malocclusion varies according to geographical location.

Genetics and malocclusion

Aetiologically, skeletal malocclusions arise from skeletal disharmonies. Thus, it is essential to have a good understanding of the skeletal growth in general. In orthodontics, one of the most challenging aspects in treating patients is predicting their craniofacial growth patterns. In this respect, it is important to understand how genetic factors and their interactions with environmental factors affect facial growth in a particular individual.

Study of the aetiology of malocclusion is a complex subject since both genetic and environmental factors may affect craniofacial development (Mossey, 2014). Several studies have shown that there is a strong link of malocclusion especially skeletal malocclusion Class III or mandibular prognathism (MP), with both genetic as well as environmental factors (Jena *et al.*, 2005; Chaturvedi *et al.*, 2011; Hartsfield *et al.*, 2012).

The relative genetic contribution to Class III malocclusion has been the subject of interest of many researchers. Some evidence has been found suggesting that genetic factors contribute to the malocclusion susceptibility. In a review article, Moreno *et al.* (2015) mentioned that association studies have found positive correlations for mandibular prognathism and genes *EPB41*, *SSX21P*

and *PLXNA*, located within the locus 1p22-p36, while genes *COL2A1*, *TGFB3*, and *LTBP2* within the 12q13-q24 locus. *MATRILIN-1* is a cartilage matrix protein and its polymorphism has been shown to be associated with mandibular prognathism in Korean population (Jang *et al.*, 2010). Genotyping results showed that the *Matrilin-1* polymorphism haplotype TGC had a pronounced risk effect for mandibular prognathism compared with controls which suggest that polymorphisms in *Matrilin-1* could be used as a marker for genetic susceptibility to mandibular prognathism.

The mutation in *DUSP6* has also been identified in cases of malocclusion and reinforces that the 12q22-q23 region is biologically relevant to craniofacial development and may be genetically linked to the Class III malocclusion (Nikopensius *et al.*, 2013). Very recently, Nowrin *et al.* (2019) detected a missense mutation in EXON 3 of *DUSP6* gene in three members of a Malaysian Malay family with Class III malocclusion. This study further acknowledged the importance of *DUSP6* gene in skeletal functions (Nowrin *et al.*, 2019).

With the advancement of dentofacial phenotyping and the availability of large-scale genomic data analysis, the fundamental aspect of genetic mechanism which underlies the developmental process of craniofacial complex is unravelled. Additionally, available genetic analysis such as linkage analysis, whole exome sequencing, polymorphism or mutational analysis has enabled genetic association study to be performed on malocclusion cases, hence broadened the knowledge on the involvement of certain genes with the incidence of malocclusion.

Pax9 Genes

Alterations in genes which are important during the process of craniofacial development have been associated with the incidence of craniofacial abnormalities. Paired Box 9 gene (*PAX9 gene*) located at chromosome 14 (locus 14q13.3) is a gene family which is responsible in tooth as well as skeletal development (Ghergie *et al.*, 2013). Anne *et al.*, (2015) claimed that *PAX9* gene regulates cell proliferation, migration and determination in multiple neural crest-derived lineages, such as cardiac, sensory, and enteric neural crest, pigment cells, glia, craniofacial skeleton and teeth, or in organs developing in close relationship with the neural crest such as the thymus and parathyroids. *PAX9* gene is a protein encoding gene that encodes the transcription factor that is important for craniofacial and dental development (Seo *et al.*, 2013). Krivicka-Uzkurele *et al.*, (2016) stated *PAX9* gene is expressed in the developing facial processes and influence the formation of lower face. Kavitha *et al.*, (2010) found that *PAX9* gene has 4 exons which are highly conserved in human being. Mutated *PAX9* gene is frequently associated with oligodontia or hypodontia as well as Class II/Division 2 malocclusion (Ghergie *et al.*, 2013a). Animal studies conducted by Peter *et al.*, (1998) and Nakatomi *et al.*, (2010) found that mutated or absence of *PAX9* gene shown poor development of skeletal and odontogenesis with lack of coronoid process formation. Peter *et al.*, (1998) added this particular gene was highly expressed at the region of pharyngeal pouches, mesenchyme of nasal processes, maxillary and mandibular arches, as well as at the area of developing tooth buds hence supporting the importance of *PAX9* in craniofacial, tooth and skeletal development.

Polymorphism in *PAX9* gene; SNP marker rs8004560, has been suggested to

have an association with Class II/Division 2 malocclusion with hypodontia except the third molar (Wall *et al.*, 2009). Ghergie *et al.*, (2013a) also found association between *PAX9* SNP (rs8004560) with Class I malocclusion patients. We have performed sequencing analysis on patients with Class II skeletal base malocclusion for *PAX9* SNP (rs8004560). However, no significant association of *PAX9* SNP (rs8004560) with Class II skeletal base was observed from our local population (Saad *et al.*, 2018). This might be due to small number of samples recruited in our study.

Myo1H Genes

Another gene which has been shown to be associated with malocclusion is *MYO1H*. *MYO1H*, located at 12q24.11 is a class 1 myosin that is in a different protein grouping than the myosin heavy chain isoforms found in the skeletal muscle sacromeres, which are the basis of fibre typing. Myosin is superfamily of motor proteins that involve in generating force and movement along actin filaments (Mooseker and Cheney, 1995). Class 1 myosin is necessary for cell motility; phagocytosis and vesicle transport (Rowlerson *et al.*, 2005). Myosin heavy chain isoforms was revealed to be found in the masseter muscle via immunohistochemical staining and gene expression studies (Arun *et al.*, 2016). Few studies suggest that muscle affect the skeletal growth during embryonic stage, postnatal stage, and homeostatic relationship in adult and aging process (Brotto, 2015). Therefore, genetic alteration in genes responsible for muscle function will also affect the skeletal growth. In a recent article, Sun *et al.* (2018) have shown that the expression of *MYO1H* orthologous genes were detected at mandibular jaw of zebrafish model, whereby jaw cartilage defects were demonstrated in the *MYO1H* knockdown

model. These developmental and functional studies strongly demonstrate the importance of *MYO1H* gene for proper jaw growth and development and its contribution towards the pathogenesis of mandibular prognathism and mandibular retrognathism in human (Arun *et al.*, 2016; Sun *et al.*, 2018).

Tassopoulou-Fishell *et al.* (2013) reported significant association between *MYO1H* SNP (rs10850110) with mandibular prognathism patients whom are mostly Caucasian. Ghergie *et al.* (2013b) also performed single nucleotide polymorphism analysis of *MYO1H* gene (rs10850110) on malocclusion Class I, II and III from Romanian population. Their study also detected association of *MYO1H* SNP (rs10850110) allele and genotypes with different malocclusion cases. Arun *et al.* (2016) studied genetic association by performing PCR-RFLP methods on three SNP markers of *MYO1H* on mandibular retrognathism cases. These markers include rs10850110, rs11611277 and rs3825393. The SNP rs3825393 showed a statistically significant association with mandibular retrognathism, while no association was detected in other two polymorphism markers with mandibular retrognathism (Arun *et al.*, 2016). Due to these findings, we also initiated a preliminary analysis of *MYO1H* single nucleotide polymorphism of rs10850110 on mandibular prognathism cases, but no significant association was observed. Again, small sample size might contribute to this finding (Yahya *et al.*, 2018). Thus, we are proposing for larger number of samples to be recruited for future genetic association study. In addition, the criteria for inclusion and exclusion to fulfil the exact classification of the malocclusion must be followed strictly.

To date, most of the genetic studies looking into the polymorphism of these genes with malocclusion have

been done in other parts of the world. As far as we are aware, scanty data regarding dental malocclusion and its genetic analysis is available from our local population (Esa *et al.*, 2001). Thus, we hope that the ongoing studies carried out in this institution could provide new scientific information for the betterment of the knowledge in the management and treatment of malocclusion in this population. This could attribute to clinicians and researcher in the field of craniofacial research.

Acknowledgement

We would like to acknowledge IIUM Research Initiative Grant (RIGS 15-045-0045) for the financial support and staff of Department of Orthodontics and Center Research and Animal Facility (CREAM) for their assistance.

References

- Alajlan, S. S., Alsaleh, M. K., Alshammari, A. F., Alharbi, S. M., Alshammari, A. K., Alshammari, R. R. (2019). The prevalence of malocclusion and orthodontic treatment need of school children in Northern Saudi Arabia. *Journal of Orthodontics Science*. 8 (1),10
- Alhammadi, M. S. (2019). Dentoalveolar compensation in different anterioposterior and vertical skeletal malocclusions. *Journal of Clinical & Experimental Dentistry*. 11(8):e745-53.
- Anne H, Monsoro. B. (2015), PAX transcription factors in neural crest development. *Seminar in Cell & Development Biology*, 44, 87-96.
- Arun R. M., Lakkakula B. V. K. S., Chitharanjan A. B. (2016). Role of myosin 1h gene polymorphisms in mandibular retrognathism. *American Journal of Orthodontics & Dentofacial Orthopedics*, 149, 699-704
- Brotto M. & Bonewald L. (2015). Bone and muscle: interactions beyond mechanical. *Bone*, 80: 109-114
- Chaturvedi, S., Kamath, P., & Prasad, R. (2011). Class III malocclusion. Role of nature and nurture. *Virtual Journal of Orthodontics*, 9(1), 1-10.
- Chu, C. H., Choy, B. H., & Lo, E. C. (2009). Occlusion and orthodontic treatment demand among Chinese young adults in Hong

- Kong. *Oral Health & Preventive Dentistry*, 7(1), 83.
- Claudino, D., & Traebert, J. (2013). Malocclusion, dental aesthetic self-perception and quality of life in a 18 to 21 year-old population: a cross section study. *BMC Oral Health*, 13(1), 1.
- Dhar, V., Jain, A., Dyke, T. E.V., Kohli, A. (2007). Prevalence of gingival diseases, malocclusion and fluorosis in school-going children of rural areas in Udaipur district. *Journal of Indian Society of Pedodontics & Preventive Dentistry*, 25,103-105.
- Esa, R., Razak, I. A., & Allister, J. H. (2001). Epidemiology of malocclusion and orthodontic treatment need of 12-13-year-old Malaysian schoolchildren. *Community Dental Health*, 18(1), 31-36.
- Ghergie, M., Festila, D., Lupan, I., Popescu, O., & Kelemen, B. (2013a). Testing the association between orthodontic Classes I, II, III and SNPs (rs731236, rs8004560, rs731236) in a Romanian clinical sample. *Annals of the Romanian Society for Cell Biology*, 18(2), 43-51.
- Ghergie, M., Feștilă, D., Kelemen, B., & Lupan, I. (2013b). Myo1H gene single nucleotide polymorphism rs10850110 and the risk of malocclusion in the Romanian population. *Acta Medica Transilvanica*, 18(4),281-284.
- Hardy, D. K., Cubas, Y. P., & Orellana, M. F. (2012). Prevalence of angle class III malocclusion: a systematic review and meta-analysis. *Open Journal of Epidemiology*, 2(2012), 75-82.
- Hartsfield Jr, J. K., Otero, L. M., & Morford, L. A. (2012). Genetic factors affecting facial growth. *INTECH Open Access Publisher*, 125-140.
- Ismail, K., Ghazali@Suhaimi, S. S., Abu Bakar, N., Mokhtar, K. I., and Kharuddin, A. F. (2017). Demographic characteristics and analysis of malocclusions of orthodontic patients seen at IIUM Dental Specialist Clinic, Kuantan, Pahang. *International Medical Journal Malaysia*, 16(2), 107-111.
- Jang, J. Y., Park, E. K., Ryoo, H. M., Shin, H. I., Kim, T. H., Jang, J. S., Park, H.S., Choi, J.Y. & Kwon, T. G. (2010). Polymorphisms in the matrilin-1 gene and risk of mandibular prognathism in Koreans. *Journal of Dental Research*, 89(11), 1203-1207.
- Jena, A. K., Duggal, R., Mathur, V. P., & Parkash, H. (2005). Class-III malocclusion: genetics or environment? A twins study. *Journal of Indian Society of Pedodontics and Preventive Dentistry*, 23(1), 27.
- Joshi, N., Hamdan, A. M., Fakhouri, W. D. (2014). Skeletal malocclusion: a developmental disorder with long-life morbidity. *Journal of Clinical Medicine Research*. 6 (6):399-408.
- Kavitha B, Priyadarshini V, Sivapathasundharam, B, Saraswathi TR (2010). Role of genes in oro-dental diseases. *Indian Journal of Dental Res*, 21(2): 270-274.
- Krivicka-Uzkurele, B., Pilmane, M. (2016). Expression of interferon regulatory factor 6, muscle segment homeobox 1, paired box gene 9, homeobox b3, and related tyrosine kinases in human cleft-affected tissue. *Journal of Orofacial Sciences*, 8(1), 59-65.
- Mooseker M.S., Cheney R.E. (1995). Unconventional myosins. *Annual Review of Cell Review Biology*, 11:633-75
- Moreno Uribe L.M., Miller S.F. (2015). Genetics of the dentofacial variation in human malocclusion. *Orthodontics & Craniofacial Research*, 18(1), 91-99.
- Morford, L. A., Wall, M. D., Morrison, M. W., Kula, K. S., & Hartsfield Jr, J. K. (2010). Association analysis of class-II Division-2 (CII/D2) with PAX9 and MSX1. *Journal of Dental Research*, 89(Special Issue).
- Mossey, P. A. (2014). The heritability of malocclusion: part 1—genetics, principles and terminology. *British Journal of Orthodontics*.
- Nakatomi, M., Wang, X. P., Key, D., Lund, J. J., Turbe-Doan, A., Kist, R. and Peters, H. (2010). Genetic interactions between pax9 and msx1 regulate lip development and several stages of tooth morphogenesis. *Developmental Biology*, 340(2), 438-449.
- Nikopensius, T., Saag, M., Jagomägi, T., Annilo, T., Kals, M., Kivistik, P. A., Milani, L. & Metspalu, A. (2013). A missense mutation in DUSP6 is associated with Class III malocclusion. *Journal of Dental Research*, 92(10), 893-898.
- Nishio, C., & Huynh, N. (2016). Skeletal malocclusion and genetic expression: an evidence-based review. *Journal of Dental Sleep Medicine*, 3(2), 57-63.
- Nowrin, S. A., Basri, R., Alam, M. K., Jaafar, S., Mokhtar, K. I. (2019). Class III malocclusion: missense mutations in DUSP6 gene. *Pesquisa Brasileira em Odontopediatria e Clínica Integrada*. 19:e4709
- Peters, H., Neubüser, A., Kratochwil, K., & Balling, R. (1998). Pax9-deficient mice lack pharyngeal pouch derivatives and teeth and exhibit craniofacial and limb abnormalities. *Genes & Development*, 12(17), 2735-2747.
- Rowlerson, A., Raoul, G., Daniel, Y., Close, J., Mauragr, C. A., Ferri, J., et al. (2005). Fiber-type differences in masseter muscle

- associated with different facial morphologies. *American Journal of Orthodontics & Dentofacial Orthopedics*, 127, 37-46
- Saad, M. M., Abd Rahman, N. A., Mokhtar, K. I., Abu Bakar, N. (2018). Preliminary study of PAX9 single nucleotide polymorphism (rs8004560) in patients with class II skeletal base malocclusion contributed by mandibular retrognathism. *Archives of Orofacial Sciences*. 13 (2): 112-118.
- Salzmann, J. A. (1950) Principles of Orthodontics J. B. Lippincott Company; 2nd edition.
- Seo, Y. J., Park, J. W., Kim, Y. H., & Baek, S. H. (2013). Associations between the risk of tooth agenesis and single-nucleotide polymorphisms of MSX1 and PAX9 genes in nonsyndromic cleft patients. *The Angle Orthodontist*, 83(6), 1036-1042.
- Soh, J., Sandham, A., and Chan, Y. H. (2005) occlusal status in Asian Male adults: the angle orthodontist. *International Journal of Orthodontics and Dentofacial Orthopaedics*, 75(5), 814-820.
- Sun, R., Wang, Y., Jin, M., Chen, L., Cao, Y., Chen, F. Identification and functional studies of MYO1H for mandibular prognathism. (2018). *Journal of Dental Research*. 97 (13), 1501-1509.
- Tassopoulou-Fishell, M., Deeley, K., Harvey, E. M., Sciote, J., & Vieira, A. R. (2012). Genetic variation in myosin 1H contributes to mandibular prognathism. *American Journal of Orthodontics and Dentofacial Orthopedics*, 141(1), 51-59.
- Wall, M. D. (2009). Association analysis of class II division 2 malocclusion and two genes linked to hypodontia (MSX1 and PAX9) (Doctoral Dissertation).
- Walther, D.P., Houston, W. J. B., Jones, M. L., et al. (1994). *Walther and Houston's Orthodontic notes*. Oxford: Wright.
- Weinberger T. (1993) Angle classification. *American Journal Orthodontics and Dentofacial Orthopedics*. 103 (4), 26A, 28A, 30A.
- Yahya, S. N., Abdul Razak, N. S., Mokhtar, K. I., Abu Bakar, N. (2018). A preliminary study on MYO1H single nucleotide polymorphism (rs10850110) in mandibular prognathism in Malay Population. *Journal of International Dental and Medical Research*. 11 (2), 607-613.

Instruction to Authors

Submission

Complete manuscripts, written in English along with tables and illustrations should be submitted as softcopy to zainulrajion@iium.edu.my

Conditions

All manuscripts submitted for publication must be accompanied by a cover letter declaring originality of the work and certifies that the manuscript has not been published or submitted elsewhere, free from conflict of interest and conduct of research in accordance to ethical guidelines established for human subjects and animal welfare. In addition, a statement of agreement of all authors to transfer all the copyrights to the journal should also accompany the manuscript.

A copy of the certification form, which certifies that the manuscript has not been published or submitted before and all authors have contributed and are in agreement with the content of the manuscript, must be submitted to the journal's editorial office by uploading it as a PDF file.

Manuscripts submitted for publication are understood to be offered only to **IJOHS** and which have not been sent to other journals for consideration. There is no publication fee to submit or publish content in **IJOHS**.

Manuscript should be typed in **Arial, font size 11 with 1.5 spacing**.

The manuscript should be divided into the following sections with the sequence; Title Page, Abstract, Introduction, Materials and Methods, Results, Discussion, Acknowledgements, References, Tables, Illustrations and Figure Legends must be incorporated near to the text they are cited

Title Page:

Title page should be arranged in the following order: (1) a concise and informative title not exceeding 80 characters; (2) authors' full names (without degrees and titles) and affiliation including city and country. Superscript numbers may be used to affiliate authors to different departments or institutions; and (3) a complete mailing address, telephone, fax and e-mail address of the corresponding author.

Abstract:

Abstract should be unstructured and should not exceed 250 words. It should be a self-standing summary of the work that may be republished by information retrieval services. A maximum of 5 keywords should be listed at the end of the abstract.

Introduction:

Introduction should briefly and clearly describe the background and objective(s) of the study. Avoid exhaustive review of the literature and include only relevant recent studies.

Materials and Methods:

This section should be described in sufficient details so that it is reproducible. It should include technical information such as the study design, and specific procedures. Sub-headings may be used to enhance the clarity or to categorize the methods. Established methods or procedures should be named and cited. New methods or modifications of old methods should be described with complete details. Authors are advised to use generic names and terms rather than commercial names. Statistical methods applied, software used must also be stated clearly and concisely.

Results:

This section should be presented in a logical sequence in text, tables and illustrations. Subheadings may be used

to enhance clarity or to call attention to the most significant findings. Data appearing in tables or figures may be summarized but not duplicated in the text. Tables and figures should be numbered in the order in which they are described and cited in the text. Example, For tables, examples are Table 1, Table 2 and for figures, examples are Figure 1, Figure 2.

Discussion:

This section should summarize, explain and interpret the results with a scientifically critical view of previously published works in the field. Avoid repetition of the data already presented in the result section.

Acknowledgements:

This section is to be given to those who have provided assistance to the project and sponsors who have given financial support and funds.

References:

This section should list all sources cited in the paper. The citations should be arranged in alphabetical order by the surname of the first author without numbering in the text. Cite article as e.g. (Ahmad, 2016) for a single author, (Chu & Kim, 2019) for two authors and (Karim *et al.*, 2013) for more than three authors.

Standard journal article

References to journals should provide the name(s) of the author(s), year, title of the paper and journal, volume and issue number, page numbers. Please provide full name of journal. If there are more than six authors, the first six authors should be listed and followed by *et al.* in the list of References.

Sudbery, P. E. (2011). Growth of *Candida albicans* Hyphae. *Nature Reviews Microbiology*, 9(10), 737.

Book

References to books/monographs should give the name(s) of the author(s), year, title of book, edition number, place of publication, publisher and page numbers.

Conn, E.E., Stumpf, P.K., Brueing, G., Doi, R.H. (1987). *Outlines of Biochemistry*, 3rd edn. New York: John Wiley & Sons, pp. 45–52.

Chapter in book

References to chapter in books/monographs should give the name(s) of the author(s), year, chapter title, editors, title of book, edition number, place of publication, publisher and page numbers.

Fejerskov O, Nyvad B, Kidd EAM (2003). Clinical and histological manifestations of dental caries. In: Fejerskov O, Kidd EAM (eds.), *Dental Caries – The Disease and Its Clinical Management*. London: Blackwell Munksgaard, pp. 71–97.

Internet resources

Authors are required to include as much electronic retrieval information as needed for others to locate the sources they have cited.

López-Jornet P (2006). Labial mucocele: a study of eighteen cases. *The Internet Journal of Dental Science*, 3(2). Retrieved 7 February 2007, from <http://www.ispub.com/ostia/index.php?xmlFilePath=journals/ijds/vol3n2/labial.xml>

Tables

Each table should have a suitable title with footnotes wherever necessary. Do not use vertical lines in the table.

Illustrations

All figures and illustrations could be original photographs, artwork or high-quality digital images (submitted as CMYK - 8 bits per channel in TIFF format). Images must be at least 600 by 450 pixels (proportional height) in size when in landscape orientation with a resolution of at least 300 pixels per inch. Graphs should be approximately 500 pixels wide so that all labeling can be read with data points clearly visible. Figures should be numbered

consecutively in the order in which they appear in the manuscript, using Arabic numerals. A list of figure legends must be included on a separate page following the illustrations. The legend should explain each figure in detail. All figures will be printed as black and white. Colour figures will only appear in the PDF file.

Page proofs

On acceptance of the manuscripts for publication, page proofs should be reviewed meticulously by the contributors. Changes made in proof should be limited to the correction of typographical errors. Proofs must be returned for publication with corrections and responses to queries on the date specified by the Editor.



الجامعة الإسلامية العالمية ماليزيا
INTERNATIONAL ISLAMIC UNIVERSITY MALAYSIA
يُونِسُورِيَتِي اِسْلَامِيَّةَ اِنْتَرَا اِنجيسَا مَلِيسِيَا

Garden of Knowledge and Virtue