



Aberystwyth University

Soil Water Assessment Tool (SWAT) simulated hydrological impacts of land use change from temperate grassland to energy crops

Holder, Amanda Jane; Rowe, Rebecca; McNamarra, Niall; Donnison, Iain; McCalmont, Jon

Published in:
GCB Bioenergy

DOI:
[10.1111/gcbb.12628](https://doi.org/10.1111/gcbb.12628)

Publication date:
2019

Citation for published version (APA):

Holder, A. J., Rowe, R., McNamarra, N., Donnison, I., & McCalmont, J. (2019). Soil Water Assessment Tool (SWAT) simulated hydrological impacts of land use change from temperate grassland to energy crops: a case study in western UK. *GCB Bioenergy*, 11(11), 1298-1317. <https://doi.org/10.1111/gcbb.12628>

Document License CC BY

General rights

Copyright and moral rights for the publications made accessible in the Aberystwyth Research Portal (the Institutional Repository) are retained by the authors and/or other copyright owners and it is a condition of accessing publications that users recognise and abide by the legal requirements associated with these rights.

- Users may download and print one copy of any publication from the Aberystwyth Research Portal for the purpose of private study or research.
- You may not further distribute the material or use it for any profit-making activity or commercial gain
- You may freely distribute the URL identifying the publication in the Aberystwyth Research Portal

Take down policy

If you believe that this document breaches copyright please contact us providing details, and we will remove access to the work immediately and investigate your claim.

tel: +44 1970 62 2400
email: is@aber.ac.uk

MRS. AMANDA JANE HOLDER (Orcid ID : 0000-0002-5355-2525)

DR. JON MCCALMONT (Orcid ID : 0000-0002-5978-9574)

Article type : Original Research

Soil Water Assessment Tool (SWAT) simulated hydrological impacts of land use change from temperate grassland to energy crops: a case study in western UK

Running Head: Hydrology in conversion from grass to energy crops

Amanda J. Holder^{1*}, Rebecca Rowe³, Niall P. McNamara³, Iain S. Donnison¹ and Jon P. McCalmont²

¹Institute of Biological, Environmental and Rural Sciences (IBERS), Aberystwyth University, Gogerddan, Aberystwyth, Wales, SY23 3EQ, UK

²College of Life and Environmental Sciences, University of Exeter, Rennes Drive, Exeter, EX4 4RJ, UK

³Centre for Ecology & Hydrology, Lancaster Environment Centre, Library Avenue, Bailrigg, Lancaster, LA1 4AP, UK

*Corresponding author: Email: amh21@aber.ac.uk Tel: 44(0)1970 623111

Key words: Hydrology, *Miscanthus*, Short Rotation Coppice, flooding, bioenergy, streamflow, evapotranspiration

This article has been accepted for publication and undergone full peer review but has not been through the copyediting, typesetting, pagination and proofreading process, which may lead to differences between this version and the Version of Record. Please cite this article as doi: 10.1111/gcbb.12628

This article is protected by copyright. All rights reserved.

Abstract

When considering the large scale deployment of bioenergy crops it is important to understand the implication for ecosystem hydrological processes and the influences of crop type and location. Based on potential for future land use change (LUC) the 10,280 km² West Wales Water Framework Directive River Basin District (UK) was selected as a typical grassland dominated district, and the Soil Water Assessment Tool (SWAT) hydrology model with GIS interface was used to investigate implications for different bioenergy deployment scenarios. The study area was delineated into 855 sub-basins and 7108 hydrological response units based on rivers, soil type, land use, and slope. Changes in hydrological components for two bioenergy crops (*Miscanthus* and short rotation coppice, SRC) planted on 50% (2192 km²) or 25% (1096 km²) of existing improved pasture are quantified.

Across the study area as a whole, only surface runoff with SRC planted at the 50% level was significantly impacted, where it was reduced by up to 23% (during April). However, results varied spatially and a comparison of annual means for each sub-basin and scenario revealed surface runoff was significantly decreased and baseflow significantly increased (by a maximum of 40%) with both *Miscanthus* and SRC. Evapotranspiration was significantly increased with SRC (at both planting levels) and water yield was significantly reduced with SRC (at the 50% level) by up to 5%. Effects on streamflow were limited, varying between -5% and +5% change (compared to baseline) in the majority of sub-basins.

The results suggest that for mesic temperate grasslands adverse effects from the drying of soil and alterations to streamflow may not arise, and with surface runoff reduced and baseflow increased there could, depending on crop location, be potential benefits for flood and erosion mitigation.

Introduction

Land use change (LUC) involving different crop types or management can influence ecosystem level hydrological processes. Quantification of these impacts is necessary to inform policy decisions based on trade-offs between a range of potential positive and negative environmental impacts (DeFries & Eshleman, 2004; Foley *et al.*, 2005; Mohr & Raman, 2013). The use of bioenergy crops for renewable energy generation can help to reduce reliance on fossil fuels and attain climate change objectives (Chum *et al.*, 2011; CCC, 2018a). Although large scale uptake of dedicated energy crops in Europe has been slow to date (Lindgaard *et al.*, 2016) their use as part of the energy generation mix is increasing (BEIS, 2018a) and renewable energy from biomass remains part of international and European climate mitigation policies (IPCC, 2014; CCC, 2018b). In Europe, as part of the long term strategy and vision for a 'Climate neutral Europe by 2050', sustainable expansion of bioenergy crops is likely to target economically marginal lands, avoiding any perceived competition with food crops whilst maximizing returns for land owners (CCC, 2018b; European Commission, 2018). However, the implication of this LUC for ecosystem hydrological processing is not fully understood, particularly for second generation (non-food) bioenergy crops such as short rotation coppice (e.g. willow, *Salix* spp. and poplar, *Populus* spp.) and perennial grasses (e.g. switchgrass, *Panicum virgatum* L. and *Miscanthus*, *M. x giganteus*).

Temperate grasslands comprise a third of the utilized agricultural area across Europe and present a large potential area for the deployment of energy crops (Eurostat, 2018a). Changes in grazing management and reductions in agricultural subsidies, combined with typically poorer quality soils, are resulting in a large areas of grassland becoming economically unprofitable (Taube *et al.*, 2014; Donnison & Fraser, 2016; Eurostat, 2018b). This is particularly noticeable for European regions such as Wales (UK) with a grass dominated agricultural landscape and a high proportion of land (80%) designated by the European Commission as 'Less Favoured Areas' (agriculturally disadvantaged land in terms of soils, relief, aspect or climate, and receiving funding under the European Agricultural Fund for Rural Development EAFRD, European Commission, n.d.).

Land suitability modelling suggests large areas (2,093 km², 36% of west Wales) are suitable for bioenergy crops *Miscanthus* and SRC (Lovett *et al.*, 2014). Ambitious planting rates of up 50 km² yr⁻¹ have also been proposed as attainable with the potential for rural employment and diversification highlighted ((ADAS UK Ltd (ADAS) & Energy Technologies Institute (ETI) 2016), which is especially relevant in light of the uncertain future of UK (and indeed European) agricultural subsidies.

In comparison to grazed grassland, *Miscanthus* and SRC have the potential to impact on soil hydrological balance through an increased demand for water (Clifton-Brown *et al.*, 2002; Weih & Nordh, 2002), changes in root morphologies impacting water access through the soil profile (Neukirchen *et al.*, 1999; Crow & Houston, 2004), differences in leaf development and morphology influencing evapotranspiration and precipitation interception (Stephens *et al.*, 2001; Finch & Riche, 2010; Holder *et al.*, 2018), and taller, stronger stems changing hydraulic resistance to overland flows (Kort *et al.*, 1998; Marshall *et al.*, 2009). As a result there is generally an increase in evapotranspiration and a reduction in soil water recharge and surface runoff, compared to existing land uses (Rowe *et al.*, 2009; McCalmont *et al.*, 2017; Holder *et al.*, 2018). These traits could be of benefit in landscape flood mitigation schemes (Stephens *et al.*, 2001; Environment Agency, 2015) but can alter river flows and environments for aquatic and riparian species (Arthington *et al.*, 2010; Poff & Zimmerman, 2010) and adversely affect dryland areas (Langeveld *et al.*, 2012).

Resulting impacts of LUC to energy crops will be dependent on the extent of the area planted within river catchments and on regional climate, soil type, slope and altitude and stage of crop maturity (Stephens *et al.*, 2001; Vanlooche *et al.*, 2010; Hastings *et al.*, 2014). This is reflected in previous studies of the impacts of land use conversions involving grassland to *Miscanthus* and SRC. For example, in modelled conversions from mixed land uses (grassland, corn and soybean) to *Miscanthus* in different regions of the American Midwest, Cibir *et al.* (2015) found that streamflow was reduced by around 8%, whereas Feng *et al.* (2018) found a mean reduction in streamflow of 23% (reflecting differing percentages of each land use type and varying topography). For SRC compared to conventional pasture, Hartwich *et al.* (2016) found that decreases in modelled surface runoff varied from 20% to 78% in their study of the Northern German Plain with regional differences in climate and soils. These differences highlight the need for location specific modelling for the quantification of the potential impacts, positive or negative, of large scale bioenergy cultivation.

Hydrology simulation models linked to geographic information systems (GIS) can be used to gauge the effects of different LUC scenarios over varying spatial and temporal scales for specific locations, and a number of different models have been used in connection with biofuel scenarios (Finch *et al.*, 2004; Engel *et al.*, 2010; Vanlooche *et al.*, 2010). The Soil Water Assessment Tool (SWAT) is a

physically based (i.e. representation of hydrological processes based on known principles of energy and water flux) hydrology model (Arnold *et al.*, 1998) that can be incorporated into GIS software (Dile *et al.*, 2016). SWAT has been widely used to assess the impacts on hydrology and water quality of different land use management strategies (Engel *et al.*, 2010) and has been successfully improved and used to represent *Miscanthus* and SRC crops (Trybula *et al.*, 2015; Hartwich *et al.*, 2016) enabling the use of the model for grassland LUC scenarios in Europe where the implications are unclear.

In this study we aim to utilise the SWAT model with a GIS interface to quantify how water yield (amount of water leaving the catchment), soil water storage, evapotranspiration, surface runoff, baseflow (groundwater flow) and streamflow respond to LUC from grassland to *Miscanthus* and SRC in a typical temperate agricultural grassland region at two planting levels: an ambitious “maximum” (50% of available improved pasture) and more “limited” (25% of improved pasture) level. Differences in responses between planting levels and bioenergy crop are also considered.

Materials and methods

West Wales River Basin and model description

The West Wales Water Framework Directive River Basin District (area 10,280 km²), hereafter referred to as the watershed (Fig. 1, Environment Agency, 2014), is located in the western part of the UK and was chosen as a temperate region of Europe dominated by grass based agriculture and classed agriculturally as a ‘Less Favoured Area’ (LFA).

Hydrology for the watershed was modelled using the QSWAT v1.5 (rev. 664) extension with QGIS software (QGIS, 2014) and SWAT 2012 Editor interface (Arnold *et al.*, 1998; Dile *et al.*, 2016). A physical description of the watershed within the model (representing the baseline scenario of existing land use and conditions) was built up using the GIS layers detailed in Table 1.

The United Nations Food and Agriculture Organisations map (UNFAO, 2003), showing dominant soil types, was matched to the soil types given in the British Geological Survey soils map (British Geological Survey Materials, 2018) and the SWAT database soil codes. The watershed consists of mainly loamy soils with varying amounts of clay, silt and sand. Dystric cambisols account for 50% of the area, Dystric gleysols 23% and Gleyic cambisols 19%. The remainder consists of small areas of Podzol (5%) and Humic gleysols (2%). The watershed is predominately made up of low quality agricultural land (Welsh Government, n.d.), 40% of the watershed is >15% slope and 42% is >200 m a.s.l (Ordnance Survey, 2018). The dominant agricultural land is improved grass pasture (52%), with only 4% of the area designated as arable or horticulture. Urban areas account for 3% of the watershed with the remainder of the land cover made up of natural grasslands (19%), woodlands (18%), and small pockets of heath and marsh (4%) (Rowland *et al.*, 2017).

The watershed was delineated into 855 sub-basins based on the Digital Elevation Model (DEM) and river data. Hydrological Response Units (HRU’s) within each sub-basin were divided based on soil type, land use, and slope (divided into two bands, above and below 15%). Insignificant HRU’s were excluded using the following threshold filters to ignore areas of less than: 10% land use; 20% soil

class; and 10% slope band; and redistributed proportionally among those remaining (Dile *et al.*, 2018).

Climate data were obtained for 15 years from 1999 to 2013, the most recent period with all required data available (Table 1). The SWAT model was run on a monthly time step for the full duration using 1999 to 2003 as a 5 year warm up period (no results from the warm up period are used in the analysis). Climate data (precipitation, wind, relative humidity, and solar radiation) obtained from National Centers for Environmental Prediction (NCEP, n.d) were checked for accuracy with long term weather data ranges using four UK Met Office climate stations (Met Office, 2014) located within the watershed (Fig. 2). Mean annual precipitation in the watershed from 2004-2013 was 1,532 mm (Met Office, n.d.b). Potential evapotranspiration (PET) was calculated with the R (R Core Team, 2015) package 'Evapotranspiration' Penman Monteith formula for short grass (Guo & Westra, 2016) using data from a representative weather station (Fig. 2, Supplementary Information S1) and read into the SWAT model (Neitsch *et al.*, 2011). This resulted in the mean watershed PET being within estimates for the location and land cover type (based on Nisbet, 2005). Actual evapotranspiration was calculated within the SWAT model taking account of evaporation of canopy intercepted precipitation, crop transpiration and soil evaporation and sublimation, as detailed in the SWAT theoretical documentation (Neitsch *et al.*, 2011).

The curve number method (USDA, 1986) was used in relation to simulation of surface run off within the model with adjustments allowed based on the steepness of the slope.

Plant growth simulation and management

In order to reflect expected growth rates for the region, plant inputs for the different land cover types were adjusted from the SWAT default values using values from literature and, in the case of *Miscanthus*, some data was also obtained from measurements taken at a field scale trial site within the watershed. The main plant inputs used for the land use change crops and other land use cover plant types are shown in Tables 2 and 3, respectively. Arable agriculture in the watershed was based on typical crops grown in the region: wheat, barley, oats and oilseed rape (Welsh Government, 2018). Woodland biomass at the start of the simulations was input as 153 Mg DM ha⁻¹ for evergreen forests and 136 Mg DM ha⁻¹ for deciduous woodland (Forestry Commission, 2011, 2017).

Miscanthus field measurements

A number of plant growth input values available in literature for *Miscanthus* are based on measurements made in the American Midwest region from fertilized crops. Therefore, to check the suitability for their use in the region simulated in this project the main *Miscanthus* growth values were checked using data obtained from an established *Miscanthus* plantation (~6 ha) located within the watershed. A full description of the field site (planted in 2012) and methods used for biomass sampling are given in McCalmont *et al.* (2017).

Mean annual harvest yields simulated by the model (14.74 Mg ha⁻¹, 2004-2013) were checked against the mean peak autumn yield (14.95 Mg ha⁻¹, 2014-2016, unpublished data) recorded at the

site. The value used for radiation use efficiency (BIO_E: 41, Trybula *et al.*, 2015) was found to be similar to an estimate of 42 made using measurements of Photosynthetically Active Radiation (PAR) and gains in *Miscanthus* above and belowground biomass between May 2015 and November 2016 (unpublished data).

Canopy height was recorded weekly during the 2017 growing season at eight randomly located measuring points within the crop (locations as shown in Holder *et al.*, 2018) and reached a maximum of 3 m. Above ground biomass samples taken in February, June and August 2017 (from locations close to the eight measuring points) were freeze dried and subsequently ground to <2 mm using a Retsch mill (SM100, Retsch, Haan, Germany) before being further cryo-milled in liquid nitrogen to a fine powder (6870 Cryomill, SPEX, Stan-hope, UK). Samples were then analysed for total nitrogen (N) using a Vario Macro Cube Elementar (Analysensysteme GmbH, Langenselbold, Germany). Analysis of total phosphorus (P) was carried out by IBERs Analytical Chemistry (Aberystwyth, UK). This provided estimates of N and P at three seasonal time points (Table 4).

Management Operations

The following management operations were employed within the model depending on the land use/scenario for each HRU.

Improved grassland: Sheep grazing at a stocking density of 2 livestock units starting in April for a duration of 212 days (to a minimum biomass of 1.5 Mg DM ha⁻¹) (Genever & Buckingham, 2016). The daily dry weight of biomass eaten and trampled was set to 18 kg ha⁻¹ (each), and fresh manure inputs to 60% of biomass consumed. Nitrogen fertilizer was added in March, April, and July (40, 50, 20 kg N ha⁻¹ respectively) and phosphorus was added in March, April and September (25, 15, 10 kg P ha⁻¹ respectively) (DEFRA, 2017b). Pesticides were applied on a two year rotation: Year 1, Fluroxypyr MHE, Clopyralid and Triclopyr Amine (0.32, 0.23, 0.42 kg ha⁻¹) were added in mid April based on the contents of Pastor®; Year 2, Glyphosate Amine (0.54 kg ha⁻¹) was added at the beginning of October based on Roundup 360® (Ballingall, 2014; Fera Science Ltd, n.d.).

Miscanthus: Fertilizer was automatically added by SWAT (according to crop N stress levels) to a maximum of 60 kg N ha⁻¹ yr⁻¹ (amount required to obtain realistic yields within the model) and the above ground biomass was harvested annually in November at a 90% efficiency (based on field observations).

Short rotation coppice: Fertilizer was automatically added by SWAT (according to crop N stress levels) to a maximum of 5 kg N ha⁻¹ yr⁻¹ (being the amount required to obtain realistic yields within the model) and above ground biomass harvested in November on a three year rotation with a 70% efficiency (based on the SWAT database and Guo *et al.*, 2015).

Lawn grass: Fertilizer automatically added to a maximum of 40 kg N ha⁻¹ yr⁻¹. Grass cut from April to August every two weeks, and then once a month during September and October.

Arable: Fertilizer automatically added to a maximum of 26 kg P ha⁻¹ yr⁻¹ and 111 kg N ha⁻¹ yr⁻¹ (DEFRA, 2017b). All above ground biomass harvested (and plant growth killed) annually on 1st August (AHDB, 2018).

Natural grassland: Light cattle grazing at a stocking density of 1.2 livestock units from mid May for a duration of 90 days (to a minimum biomass of 3 Mg DM ha⁻¹) (Genever & Buckingham, 2016). The daily dry weight of biomass eaten and trampled was set as 22.5 kg ha⁻¹ (each), and fresh manure inputs were 60% of biomass consumed. Beef fresh manure was also automatically added to a maximum of 25 kg ha⁻¹ yr⁻¹ (DEFRA, 2017b; Welsh Government, 2018).

Calibration

The initial model (representing existing land use) was calibrated for streamflow using the SWAT-CUP 2012 v.5.1.6 Sequential Uncertainty Fitting (SUF12) procedure (Abbaspour, 2015a) and the protocol outlined in Abbaspour *et al.* (2015b). Water flow calibration and validation stations were selected from the National River Flow Archive (NERC & CEH, n.d.), discarding those with outside factors that may influence flow (e.g. private ground water extraction). To achieve calibration only watershed level parameters were amended (Table S2.1). Observed streamflow from gauging stations C1 to C4 (Fig. 2) was compared to modelled streamflow from the relevant sub-basin outlet and accuracy was assessed using R² and Nash Sutcliffe Efficiency results. Gauging stations located at V1 to V3 (Fig. 2) were used to validate the modelled streamflow data.

Scenarios

The baseline scenario is the calibrated model with existing land use. Four further simulations were run by splitting and changing the existing improved pasture land use and management to include the relevant percentage of energy crop (restricted to <15% slope, DEFRA, 2002; Lovett *et al.*, 2014). *Miscanthus* planted on 50% (M50) and 25% (M25) and SRC planted on 50% (SRC50) and 25% (SRC25) of existing improved grass pasture within each sub-basin. The maximum land use change scenario using 50% of existing pasture (2192 km²) is based on the potentially suitable land in the district suggested in Lovett *et al.* (2014). The reduced, limited, level of land use change at 25% (1096 km²) reflects a level that could be reached in ~20 years if potential ambitious planting schemes (ADAS & ETI, 2016) were taken up.

Analysis of results

Data analysis was performed in R version 3.5.1 (R Core Team, 2015) using linear models and linear mixed models (package 'nlme', Pinheiro *et al.*, 2017), with Tukey HSD (package 'multcomp', Hothorn *et al.*, 2008) post-hoc tests for significant results. Model residual plots were checked for the appropriateness of each model. Linear mixed model results were summarised using type III Anova (package 'car', Fox & Weisberg, 2011) which performs a Wald chi-square test.

For each level of planting, maximum (50%) or limited (25%), impacts of the crop type (baseline, *Miscanthus*, and SRC) and season on the hydrological components of surface runoff, baseflow, soil water content, evapotranspiration and water yield were explored using whole watershed means calculated for each month (2004-2013). For surface runoff, baseflow and water yield transformations were used to improve model residuals (cube root with surface runoff and square root with baseflow and water yield). Analysis was conducted separately for each planting level with models including crop type and month (and their interactions) as fixed factors and year as a random effect, with an auto correlation structure (AR1).

In addition to this, to compare between planting levels and bioenergy crop type, differences to the baseline (mm change in monthly means) were used. Linear mixed models included the fixed factors of LUC level (25% and 50%), crop type (*Miscanthus* and SRC), month, and the random effect of year and an auto correlation structure (AR1). Surface runoff and baseflow data were transformed before testing (cube root and natural logarithm transformations, respectively).

To allow for spatial effects to be examined, mean annual values (2004-2013) for all sub-basins were produced and impacts on surface runoff, baseflow, soil water content, evapotranspiration, water yield and streamflow were examined separately for each level of planting (50% or 25%) using linear models with crop type (SRC, *Miscanthus*, baseline) as a fixed factor. Streamflow data was transformed using the natural logarithm to improve residuals.

Results

Model Calibration

The watershed area was delineated into 855 sub-basins (Fig. 3) and 7108 hydrological response units (HRU). Satisfactory calibration between observed and modelled streamflow was achieved with Nash Sutcliffe Efficiency coefficient values of >0.50 for the baseline scenario representing existing land cover (Table 5, Fig. S2.1.1-S2.1.7). The curve numbers (CN) were increased from starting values for land in good hydrological condition in order to improve the correlation between observed and modelled streamflow. The final values used are shown in Table 6. Following amendments to plant growth parameters simulated yields were checked against published data (Table 7, Fig. S2.2.1-S2.2.4).

Effects at the West Wales River Basin watershed level

Impacts for the whole 10,280 km² watershed varied across the months with the greatest differences occurring during the growing season (May to September, Fig. 4). However, of the hydrological components tested (surface runoff, baseflow, soil water content, evapotranspiration and water yield) only surface runoff was significantly different compared to the baseline, where planting SRC at the 50% level resulted in significant reductions ($p = 0.03$) ranging from 17% (8 mm, January) to 23% (3 mm, April) (Fig. 4a).

Using the percentage change (compared to the baseline) to assess impacts of planting levels and bioenergy crop types, the 50% planting level (with both *Miscanthus* and SRC) led to greater reductions in overall surface runoff than at the 25% level ($\chi^2 (1) = 4.56$, $p = 0.03$). In contrast, although the 50% planting level resulted in greater increases in baseflow than the 25% level ($\chi^2 (1) = 49.94$ $p < 0.001$) impacts were significantly different between the bioenergy crop types, where baseflow was increased more during the spring with *Miscanthus* than with SRC ($\chi^2 (1) = 10.21$ $p = 0.001$) (Fig. 4b).

The direction of change for evapotranspiration following LUC differed with bioenergy crop type, where it was increased with SRC during the early part of the year (January to May), but decreased with *Miscanthus* during the same period ($\chi^2 (11) = 118.42$ $p < 0.001$) (Fig. 4c). From October to December both crop types showed a decrease following higher evapotranspiration over the growing season. Greater impacts generally resulted from the 50% planting level compared to the 25% level, although this also depended on crop species with greater differences found with *Miscanthus* than SRC ($\chi^2 (1) = 10.86$ $p = 0.001$).

Water yield showed a decrease during the growing season with both bioenergy crops, however, during the early part of the year the *Miscanthus* crop resulted in an increase, which was in contrast to the decreasing trend with SRC ($\chi^2 (11) = 27.85$ $p = 0.003$). Impacts were again greater at the 50% planting level compared to the 25% but differences between crop types and planting levels were low from October to December ($\chi^2 (1) = 10.92$ $p = 0.001$).

Sub-basin variation

LUC was simulated in 726 of the 855 sub-basins (Fig. 3) although it is also possible for non-LUC sub-basins to be impacted if, for example, they are downstream of the change. As changes in streamflow were limited in the majority of sub-basins (Fig. 5) and maximum changes in soil water content ranged from -3% to +2% across all the sub-basins, these components were not found to significantly vary spatially (soil water content $F_{(2,2562)} = 0.46$, $p = 0.63$; $F_{(2,2562)} = 1.83$, $p = 0.16$; streamflow $F_{(2,2562)} = 0.30$, $p = 0.74$; $F_{(2,2562)} = 0.38$, $p = 0.68$, at the 25% and 50% levels respectively). However, reductions in streamflow of more than 50% were found in the same 10 sub-basins for each LUC scenario. Streamflow in these 10 sub-basins ranged from 0.5 to 1.6 $\text{m}^3 \text{s}^{-1}$ (daily mean) in the baseline (existing land use) scenario

The different LUC levels and crops had varying impacts on the other hydrological components (Fig. 6, Table 8). Surface runoff was significantly lower than the baseline scenario for *Miscanthus* and SRC in both the 25% ($F_{(2,2562)} = 32.77$, $p < 0.001$) and 50% ($F_{(2,2562)} = 156.8$, $p < 0.001$) scenarios, with differences ranging from 0 to -182 mm (0 to -40%, Fig. 6a). No significant differences in surface runoff were found between *Miscanthus* and SRC.

Baseflow results also showed greater differences in *Miscanthus* compared to SRC in the 50% LUC scenario where a significant difference ($p=0.02$) was found between the two crops (Fig. 6b). 84 sub-basins in the M50 scenario increased baseflow by more than 30%, compared to 11 sub-basins in the SRC50 scenario. The maximum amount of the increase was 39% (136 mm) for M50 and 36% (127

mm) for SRC50. Baseflow was significantly higher than the baseline scenario for both *Miscanthus* and SRC in the 25% ($F_{(2,2562)} = 70.29$, $p < 0.001$) and 50% ($F_{(2,2562)} = 233.6$, $p < 0.001$) LUC scenarios.

Changes in evapotranspiration with *Miscanthus* and SRC compared to the pasture baseline ranged from -2% (-15 mm, M50) to 5% (+32 mm, SRC50) and whilst the difference was only significant for SRC ($p < 0.001$) a distinct difference was seen between the two crops ($p < 0.001$). Where changes in evapotranspiration relating to the *Miscanthus* scenarios occurred the result was a small reduction, however, with SRC increases were produced (Fig. 6c). The same trend was identified in the 25% LUC scenarios. It was also found that some of the sub-basins with the highest increase in evapotranspiration also had the highest reductions in water yield (Fig. 6c, d).

Changes in water yield compared to the baseline scenario were not significant at the 25% LUC level. However, for the 50% LUC scenarios SRC was significantly lower than both the *Miscanthus* ($p = 0.001$) and baseline ($p = 0.01$) scenarios (Fig. 6d). Differences in water yield ranged from a reduction of 4% (-30 mm, SRC50) to an increase of 2% (+16 mm, M50).

Discussion

This study has shown that large scale planting of *Miscanthus* or short rotation coppice crops does have a significant impact on the hydrological cycle for the West Wales River Basin. The simulated reductions in surface runoff and increases in baseflow for *Miscanthus* and SRC (at the limited and maximum LUC levels) correspond with previous predictions relating to land use change to *Miscanthus* and SRC (Stephens *et al.*, 2001; Environment Agency, 2015) where changes to these hydrological components followed a similar trend. The maximum monthly reduction (in mm) across the watershed for surface runoff with *Miscanthus*, 17 mm (in November, a 17% reduction compared to the baseline scenario), was similar to the 18 mm maximum reduction simulated by Cibir *et al.* (2015) in modelled LUC from grassland to *Miscanthus* within a US catchment. The 20% to 30% reduction in surface runoff found for the majority of the sub-basins is also within the range of 20% to 78% predicted by Hartwich *et al.* (2016) in modelled LUC from grassland to SRC (in different regions of the Northern German Plain).

It should be noted that the surface runoff calculations used in the model simulations are based on the curve number method (Soil Conservation Service, 1976) and Manning's roughness coefficients (e.g. Chow, 1959). These are well established for traditional crops, grassland and woodland but empirical measurements (to act as a basis for coefficient values) are lacking for *Miscanthus* and SRC (Environment Agency, 2015). The values we adopted for *Miscanthus* were previously used by Cibir *et al.* (2015) and are based on values for Alamo switchgrass (*Panicum virgatum* L.). Switchgrass is a similar perennial grass to *Miscanthus* but may exhibit morphological differences, for example an increased stem density compared to *Miscanthus* (Cassida *et al.*, 2005) that could result in differences in hydraulic resistance and hence surface runoff rates. Similarly, new *Miscanthus* varieties (currently in pre-commercial trials, Lewandowski *et al.*, 2016) can have significantly different morphologies. SRC curve numbers used were based on existing values for trees, but an SRC plantation differs in stand layout and density compared to natural woodland and therefore (for both SRC and *Miscanthus*) empirical measurements would improve model inputs. However, whilst accuracy of the model could be improved in this respect, replacing grassland in comparison to grassland with the

more rigid stems and greater height of both *Miscanthus* and SRC means that these crops would be expected to reduce runoff and sediment flow.

Due to both physiological and physical factors (e.g. higher water use and greater leaf area index) energy crops are generally associated with higher evapotranspiration than grassland, especially during the growing season (Cibin *et al.*, 2015; Hartwich *et al.*, 2016; Guo *et al.*, 2018), something also found in this study. Differences in SRC compared to *Miscanthus* in evapotranspiration and water yield are slightly more complex. Whilst the longer SRC growing season can, in part, account for the greater impact of SRC than *Miscanthus*, modelled differences are also likely to be linked to specific parameters used for the leaf area index (LAI) value during plant dormancy. In the *Miscanthus* scenarios this was set to zero (as in Trybula *et al.*, 2015), whereas the LAI for the SRC scenarios during dormancy was set to 0.75 (as per the SWAT database for willow and poplar species). Although SRC and *Miscanthus* are not transpiring during winter months, LAI influences calculations of canopy storage and hence the evaporation of intercepted precipitation.

Whilst changes in water quality were not modelled, measured soil N losses following the establishment of *Miscanthus* and SRC have been found to reduce in comparison to annual crops and grassland due to lower fertilizer use and differences in N use efficiency (Christian & Riche, 1998; Schmidt-Walter & Lamersdorf, 2012). Therefore, the reduction in fertilizer use with both *Miscanthus* and SRC (110, 60 and 5 kg N ha⁻¹ yr⁻¹ for pasture, *Miscanthus* and SRC respectively) could be expected to reduce nitrate leaching. In addition, whilst the model required the addition of fertilizer to obtain expected crop growth based on published data (Aylott *et al.*, 2008; Larsen *et al.*, 2014; Cunniff *et al.*, 2015), fertiliser use is not routine in UK commercial production of these crops, particularly when cultivating on previously fertilised pasture land (Aylott *et al.*, 2008; Terravesta Ltd, 2018). Fertilizer applications have been used in other SWAT based studies (e.g. 122 kg urea ha⁻¹ yr⁻¹ with *Miscanthus*, Cibin *et al.*, 2015, and 50 kg N ha⁻¹ yr⁻¹ with willow, Wang *et al.*, 2018) and although the best yield responses to N fertilization are generally achieved at around 60-100 kg N ha⁻¹ *Miscanthus* and SRC do not always show a response to fertilization (Cadoux *et al.*, 2012; Quaye & Volk, 2013; Aronsson *et al.*, 2014).

The different rooting structures and water requirements of SRC and *Miscanthus* have the potential to cause drying of the soil profile under rain limited conditions (Stephens *et al.*, 2001; Donnelly *et al.*, 2011). Such drying could have negative impacts such as reductions in yields (Knapp *et al.*, 2001; Richter *et al.*, 2008) and changes in microbial processes and associated nutrient availability with implications for soil carbon stocks and greenhouse gas emissions (Jensen *et al.*, 2003; Smith *et al.*, 2008). However, such drying did not occur in either scenario modelled in this study with soil moisture levels remaining similar to the pasture baseline. This is in contrast to Hartwich *et al.* (2016) where soil water content was reduced in simulated LUC from pasture to SRC crops in the drier Northern German Plain, where soils are likely to have a higher sand content. Rainfall levels in west Wales (1532 mm yr⁻¹) are also towards the top end of the range (of between 1000 to 1600 mm yr⁻¹) for areas including Ireland, western Great Britain, northern Italy, Switzerland, Austria, and northern Spain (European Environment Agency, 2012). The soils in this study also have a high clay and silt content, factors that are likely to limit drying impacts compared to drier locations or free draining, lighter soils (Marshall *et al.*, 1996; Balogh *et al.*, 2011). Therefore, in assessing the land suitability for the cultivation of energy crops, local conditions should be considered to ensure rainfall rates are sufficient to meet crop demand (Richter *et al.*, 2008). The fact that the majority of grasslands in

Europe (as a fraction of total agricultural land area) tend to be located in wetter areas (Smit *et al.*, 2008) confirms that these locations should perhaps be targeted for this kind of agricultural diversification.

Reductions in the amount of water leaving the sub-basins (water yield) was only significant for the maximum SRC LUC scenario, and changes in streamflow were not significant for any of the LUC scenarios. This indicates that changes in aquatic environments are likely to be limited across the whole watershed. However, some sub-basins did show reductions in streamflow of over 50% which, when coupled with the difficulties in understanding and predicting biotic responses to altered flow rates (Bunn & Arthington, 2002; Shafroth *et al.*, 2010), demonstrates the importance of local environmental flow assessments in proposed large scale energy crop planting (Poff *et al.*, 2010). The significant reduction in surface runoff and increase in baseflow found for both LUC levels and crop types could also impact on aquatic and riparian species (Gurnell *et al.*, 2012) which should be considered when selecting suitable locations for energy crop deployment.

However, improvements in soil water infiltration seen in this study may also benefit flood mitigation by increasing soil water capacity during periods of high rainfall, as has been found with the use of young trees (<7 years old) in shelterbelts (Marshall *et al.*, 2009). Although increases in baseflow were higher with *Miscanthus* than with SRC during the spring (possibly as a result of increased soil infiltration with *Miscanthus* due to the later leaf development) overall SRC in our modelling performed better than *Miscanthus* in terms of potential flood mitigation benefits. This is largely due to overall reductions in water yield (at the 50% LUC scenario) and increases in evapotranspiration (at both LUC levels). The annual *Miscanthus* harvest is also in contrast to SRC where the three year harvest cycle results in more over winter standing plant material for two out of three years. However, timing of the harvest for *Miscanthus* in the model was simulated as occurring in November, but *Miscanthus* can be (and often is in the UK) harvested as late as early spring where the presence of the senesced biomass continues to intercept precipitation (Holder *et al.*, 2018), and tall stalks would provide further resistance to overland flows and may reduce some of the differences between the two crops.

Reductions in surface runoff and increases in baseflow brought about by LUC can also act to slow and buffer high overland flows (Bronstert *et al.*, 2002; Marshall *et al.*, 2009; OECD, 2016) with the predicted impact of slowing the flow rate across floodplains. This factor could therefore potentially release currently excluded land in flood zone areas for the planting of biomass crops (Environment Agency, 2015). In the scenarios we tested slope was restricted to below 15% in order to allow for crop management and harvest, but if the crops were planted with the main aim of flood mitigation or nutrient buffering (e.g. as land margin buffer strips, Ferrarini *et al.*, 2017) with less demand for commercial return this assumption could be relaxed somewhat with the acknowledgment that annual harvest may sometimes be lost due to prevailing conditions preventing land access.

The large scale planting areas considered in this study were chosen to highlight the maximum effects of the land conversion scenarios. To set the more limited LUC scenario (1096 km²) in context, it has the potential to provide 12%, 1,639 GWh (assuming a yield of 12 Mg DM ha⁻¹, Larsen *et al.*, 2014; an energy content of 17.95 GJ Mg⁻¹ DM, Felten *et al.*, 2013; with a conversion efficiency of 25%, Nguyen & Hermansen, 2015) of the Welsh Government target for 70% 13,431 GWh (BEIS, 2018b) of Welsh electricity consumed to come from renewables (National Assembly for Wales, 2017).

Specific locations for planting of energy crops within the watershed will ultimately be based on economic and social constraints and it is not likely that just *Miscanthus* or SRC would be grown but rather a mix chosen to suit local conditions and opportunities. Projections based on profitability (using existing farm scales and energy crop prices) have suggested a commercially viable planting area of 390 km² of energy crops in Wales (Alexander *et al.*, 2014). However, there is scope for this to increase (by as much as 300 km² yr⁻¹ across the UK) due to improvements in agronomy, changes to climate resulting in greater yields, boosts in demand, and increases in prices paid for supply or if incentivized with subsidies (Alexander *et al.*, 2014; ADAS & ETI, 2016; Hastings *et al.*, 2017). Overall, whilst there is potential for negative impacts in a small number of sub-basins, this study shows that even with very ambitious levels of LUC the production of bioenergy crops within this catchment is unlikely to result in damaging impacts on basin level hydrological process. The impacts on other ecosystem services however were not addressed and would need to be considered in any policies that seek to support large scale planting of energy crops.

Acknowledgements

We are grateful for funding supplied by the Institute of Biology, Environment and Rural Sciences (IBERS), Aberystwyth University (IBERS receives strategic funding from BBSRC). Both IBERS and CEH were supported by MAGLUE (www.maglue.ac.uk); an EPSRC funded project; EP/ M013200/1. The field site used for some of the *Miscanthus* crop measurements was originally developed and instrumented as part of the Carbo-biocrop (NE/H01067X/1) and Energy Technologies Institute funded ELUM (www.elum.ac.uk) projects.

References

- Abbaspour, K. C. (2015a). *SWAT-CUP: SWAT Calibration and Uncertainty Programs - A User Manual*. Department of Systems Analysis, Integrated Assessment and Modelling (SIAM), Eawag. Swiss Federal Institute of Aquatic Science and Technology, Duebendorf, Switzerland. Retrieved from https://swat.tamu.edu/media/114860/usermanual_swatcup.pdf
- Abbaspour, K. C., Rouholahnejad, E., Vaghefi, S., Srinivasan, R., Yang, H., & Kløve, B. (2015b). A continental-scale hydrology and water quality model for Europe: Calibration and uncertainty of a high-resolution large-scale SWAT model. *Journal of Hydrology*, *524*, 733–752. <https://doi.org/10.1016/j.jhydrol.2015.03.027>
- ADAS UK Ltd, & Energy Technologies Institute. (2016). *Job implications of bioenergy*. Retrieved from <https://www.eti.co.uk/library/adas-relb-job-implications-of-establishing-a-bioenergy-market>
- Agriculture and Horticulture Development Board (AHDB). (2018). Wheat growth guide. *AHDB Cereals & Oilseeds*, 1–44. <https://doi.org/https://cereals.ahdb.org.uk/media/185687/g66-wheat-growth-guide.pdf>
- Alexander, P., Moran, D., Smith, P., Hastings, A., Wang, S., Sünnenberg, G., Lovett, A., Tallis, M.J., Casella, E., Taylor, G., Finch, J., & Cisowska, I. (2014). Estimating UK perennial energy crop supply using farm-scale models with spatially disaggregated data. *GCB Bioenergy*, *6*(2), 142–155. <https://doi.org/10.1111/gcbb.12121>
- Amougou, N., Bertrand, I., Cadoux, S., & Recous, S. (2012). Miscanthus × giganteus leaf senescence, decomposition and C and N inputs to soil. *GCB Bioenergy*, *4*(6), 698–707. <https://doi.org/10.1111/j.1757-1707.2012.01192.x>
- Arnold, J. G., Srinivasan, R., Muttiah, R. S., & Williams, J. R. (1998). Large area hydrologic modeling and assessment Part 1: Model development. *Journal of the American Water Resources Association*, *34*(1), 73–89.
- Aronsson, P., Rosenqvist, H., & Dimitriou, I. (2014). Impact of Nitrogen Fertilization to Short-Rotation Willow Coppice Plantations Grown in Sweden on Yield and Economy. *Bioenergy Research*, *7*(3), 993–1001. <https://doi.org/10.1007/s12155-014-9435-7>
- Arthington, A. H., Naiman, R. J., McClain, M. E., & Nilsson, C. (2010). Preserving the biodiversity and ecological services of rivers: New challenges and research opportunities. *Freshwater Biology*, *55*, 1–16. <https://doi.org/10.1111/j.1365-2427.2009.02340.x>
- Asner, G. P., Scurlock, J. M. O., & Hicke, J. A. (2003). Global synthesis of leaf area index observations: implications for ecological and remote sensing studies. *Global Ecology & Biogeography*, *12*, 191–205.
- Aylott, M. J., Casella, E., Tubby, I., Street, N. R., Smith, P., & Taylor, G. (2008). Yield and spatial supply of bioenergy poplar and willow short-rotation coppice in the UK. *New Phytologist*, *178*(2), 358–370. <https://doi.org/10.1111/j.1469-8137.2008.02396.x>
- Balogh, J., Pintér, K., Fóti, S., Cserhalmi, D., Papp, M., & Nagy, Z. (2011). Dependence of soil

respiration on soil moisture, clay content, soil organic matter, and CO₂ uptake in dry grasslands. *Soil Biology and Biochemistry*, 43, 1006–1013. <https://doi.org/10.1016/j.soilbio.2011.01.017>

Beale, C. V., Bint, D. A., & Long, S. P. (1996). Leaf photosynthesis in the C₄-grass *Miscanthus x giganteus*, growing in the cool temperate climate of southern England. *Journal of Experimental Botany*, 47(2), 267–273. <https://doi.org/10.1093/jxb/47.2.267>

BEIS (Department for Business Energy & Industrial Strategy). (2018a). *UK Energy in Brief*. Retrieved from <https://www.gov.uk/government/statistics/uk-energy-in-brief-2018>

BEIS (Department for Business Energy & Industrial Strategy). (2018b). *Electricity generation and supply figures for Scotland, Wales, Northern Ireland and England 2004 to 2017*. Retrieved from https://assets.publishing.service.gov.uk/government/uploads/system/uploads/attachment_data/file/770767/Electricity_regional_generation_2004-2017.xls

Belanger, G., Gastal, F., & Warembourg, F. R. (1994). Carbon Balance of Tall Fescue (*Festuca arundinacea* Schreb.): Effects of Nitrogen Fertilization and the Growing Season. *Annals of Botany*, 74, 653–659.

Bequet, R., Campioli, M., Kint, V., Vansteenkiste, D., Muys, B., & Ceulemans, R. (2011). Leaf area index development in temperate oak and beech forests is driven by stand characteristics and weather conditions. *Trees*, 25(5), 935–946. <https://doi.org/10.1007/s00468-011-0568-4>

British Geological Survey Materials (c) NERC 2018. Open Government Licence V3. (2018). Soil Parent Material. Retrieved September 22, 2018, from <https://www.bgs.ac.uk/products/onshore/soilPMM.html>

Bronstert, A., Niehoff, D., & Brger, G. (2002). Effects of climate and land-use change on storm runoff generation: Present knowledge and modelling capabilities. *Hydrological Processes*, 16, 509–529. <https://doi.org/10.1002/hyp.326>

Bullard, M. J., Mustill, S. J., Carver, P., & Nixon, P. M. I. (2002). Yield improvements through modification of planting density and harvest frequency in short rotation coppice *Salix* spp. - 2. Resource capture and use in two morphologically diverse varieties. *Biomass and Bioenergy*, 22(1), 27–39. [https://doi.org/10.1016/S0961-9534\(01\)00055-1](https://doi.org/10.1016/S0961-9534(01)00055-1)

Bunn, S. E., & Arthington, A. H. (2002). Basic principles and ecological consequences of altered flow regimes for aquatic biodiversity. *Environmental Management*, 30(4), 492–507. <https://doi.org/10.1007/s00267-002-2737-0>

Burgy, R. H., & Pomeroy, C. R. (1958). Interception losses in grassy vegetation. *Transactions, American Geophysical Union*, 39(6), 1095–1100. <https://doi.org/10.1029/TR039i006p01095>

Cadoux, S., Riche, A. B., Yates, N. E., & Machet, J. (2012). Nutrient requirements of *Miscanthus x giganteus*: Conclusions from a review of published studies. *Biomass and Bioenergy*, 38, 14–22.

Cassida, K. A., Muir, J. P., Hussey, M. A., & Read, J. C. (2005). Biomass yield and stand characteristics of switchgrass in south central US environments. *Crop Science*, 45, 673–681.

Centre for Ecology & Hydrology (CEH). (n.d.). UK Lakes Portal. Retrieved February 1, 2018, from <https://eip.ceh.ac.uk/apps/lakes/>

Chow, V. T. (1959). *Open-channel hydraulics*. McGraw-Hill, New York.

Christian, D. G., & Riche, A. B. (1998). Nitrate leaching losses under *Miscanthus* grass planted on a silty clay loam soil. *Soil Use and Management*, 14(May 1993), 131–135. <https://doi.org/10.1111/j.1475-2743.1998.tb00136.x>

Chum, H., Faaij, A., Moreira, J., Berndes, G., Dhamija, P., Dong, H., Gabrielle, B., Goss Eng, A., Lucht, W., Mapako, M., Masera Cerutti, O., McIntyre, T., Minowa, T., & Pingoud, K. (2011). *Chapter 2: Bioenergy*. In *IPCC Special Report on Renewable Energy Sources and Climate Change Mitigation*. (O. Edenhofer, R. Pichs-Madruga, Y. Sokona, K. Seyboth, P. Matschoss, S. Kadner, T. Zwickel, P. Eickemeier, G. Hansen, S. Schlömer, & von Stechow, C. Eds.). Cambridge University Press, Cambridge, United Kingdom and New York, NY, USA. Retrieved from <https://www.ipcc.ch/report/renewable-energy-sources-and-climate-change-mitigation/>

Cibin, R. A. J., Trybula, E., Chaubey, I., & Brouder, S. M. (2015). Watershed-scale impacts of bioenergy crops on hydrology and water quality using improved SWAT model. *GCB Bioenergy*, 1–12. <https://doi.org/10.1111/gcbb.12307>

Clifton-Brown, J. C., & Lewandowski, I. (2000). Water use efficiency and biomass partitioning of three different *Miscanthus* genotypes with limited and unlimited water supply. *Annals of Botany*, 86(1), 191–200. <https://doi.org/10.1006/anbo.2000.1183>

Clifton-Brown, J. C., Lewandowski, I., Bangerth, F., & Jones, M. B. (2002). Comparative responses to water stress in stay-green, rapid and slow senescing genotypes of the biomass crop, *Miscanthus*. *New Phytologist*, 154(2), 335–345. <https://doi.org/10.1046/j.1469-8137.2002.00381.x>

Committee on Climate Change (CCC). (2018a). *Biomass in a low-carbon economy*. Retrieved from www.theccc.org.uk/publications

Committee on Climate Change (CCC). (2018b). *Land use: Reducing emissions and preparing for climate change*. Retrieved from www.theccc.org.uk/publications

Cristiano, P. M., Posse, G., & Di Bella, C. M. (2015). Total and aboveground radiation use efficiency in C3 and C4 grass species influenced by nitrogen and water availability. *Grassland Science*, 61(3), 131–141. <https://doi.org/10.1111/grs.12086>

Crow, P., & Houston, T. J. (2004). The influence of soil and coppice cycle on the rooting habit of short rotation poplar and willow coppice. *Biomass and Bioenergy*, 26(6), 497–505. <https://doi.org/10.1016/j.biombioe.2003.09.002>

Cunniff, J., Purdy, S. J., Barraclough, T. J. P., Castle, M., Maddison, A. L., Jones, L. E., Shield, I.F., Gregory, A.S., & Karp, A. (2015). High yielding biomass genotypes of willow (*Salix* spp.) show differences in below ground biomass allocation. *Biomass and Bioenergy*, 80(0), 114–127. <https://doi.org/10.1016/j.biombioe.2015.04.020>

DeFries, R., & Eshleman, K. N. (2004). Land-use change and hydrologic processes: a major focus for the future. *Hydrological Processes*, 18(11), 2183–2186. <https://doi.org/10.1002/hyp.5584>

Department for Environment Food & Rural Affairs (DEFRA). (2002). *Growing Short Rotation Coppice: Best practice guidelines*. DEFRA Publications, London. Retrieved from <http://adlib.everysite.co.uk/resources/000/023/833/src-guide.pdf>

Department for Environment Food & Rural Affairs (DEFRA). (2017). *The British Survey of Fertiliser Practise (2016)*. Retrieved from <https://www.gov.uk/government/collections/fertiliser-usage>

Dile, Y. T., Daggupati, P., George, C., Srinivasan, R., & Arnold, J. (2016). Introducing a new open source GIS user interface for the SWAT model. *Environmental Modelling and Software*, 85, 129–138. <https://doi.org/10.1016/j.envsoft.2016.08.004>

Dile, Y. T., Srinivasan, R., & George, C. (2018). *QGIS Interface for SWAT (QSWAT)*. Retrieved from <https://swat.tamu.edu/software/qswat/>

Donnelly, A., Styles, D., Fitzgerald, J., & Finnan, J. (2011). A proposed framework for determining the environmental impact of replacing agricultural grassland with *Miscanthus* in Ireland. *GCB Bioenergy*, 3, 247–263. <https://doi.org/10.1111/j.1757-1707.2010.01086.x>

Donnison, I. S., & Fraser, M. D. (2016). Diversification and use of bioenergy to maintain future grasslands. *Food and Energy Security*, 5(2), 67–75. <https://doi.org/10.1002/fes3.75>

Dunkerley, D. (2000). Measuring interception loss and canopy storage in dryland vegetation: a brief review and evaluation of available research strategies. *Hydrological Processes*, 14, 669–678.

Engel, B., Chaubey, I., Thomas, M., Saraswat, D., Murphy, P., & Bhaduri, B. (2010). Biofuels and water quality: Challenges and opportunities for simulation modeling. *Biofuels*, 1(3), 463–477. <https://doi.org/10.4155/bfs.10.17>

Environment Agency. (2014). WFD River Basin Districts Cycle 2 (Open Government Licence v3.0). Retrieved February 1, 2018, from <https://data.gov.uk/dataset>

Environment Agency. (2015). *Energy crops and floodplain flows*. Environment Agency, Bristol.

European Commission. (n.d.). Agricultural and Rural Development. Less Favoured Areas Scheme. Retrieved March 15, 2019, from https://ec.europa.eu/agriculture/rural-development-previous/2007-2013/less-favoured-areas-scheme_en

European Commission. (2018). *A Clean Planet for all A European strategic long-term vision for a prosperous, modern, competitive and climate neutral economy*. Retrieved from https://ec.europa.eu/clima/sites/clima/files/docs/pages/com_2018_733_en.pdf

European Environment Agency. (2012). Average annual precipitation in the EEA area. Retrieved January 27, 2019, from <https://www.eea.europa.eu/data-and-maps/figures/average-annual-precipitation>

Eurostat. (2018a). Agri-environmental indicator - cropping patterns. Retrieved May 29, 2018, from <http://ec.europa.eu/eurostat/statistics-explained/index.php?title=Agri->

This article is protected by copyright. All rights reserved.

environmental_indicator_-_cropping_patterns

Eurostat. (2018b). Agricultural accounts and prices. Retrieved from http://ec.europa.eu/eurostat/statistics-explained/index.php?title=Agricultural_accounts_and_prices

Felten, D., Fröba, N., Fries, J., & Emmerling, C. (2013). Energy balances and greenhouse gas-mitigation potentials of bioenergy cropping systems (Miscanthus, rapeseed, and maize) based on farming conditions in Western Germany. *Renewable Energy*, 55, 160–174. <https://doi.org/10.1016/j.renene.2012.12.004>

Feng, Q., Chaubey, I., Cibin, R., Engel, B., Sudheer, K. P., Volenec, J., & Omani, N. (2018). Perennial biomass production from marginal land in the Upper Mississippi River Basin. *Land Degradation and Development*, 29(6), 1748–1755. <https://doi.org/10.1002/ldr.2971>

Fera Science Ltd. (2018). Pesticide Usage Surveys. Retrieved February 1, 2018, from <https://secure.fera.defra.gov.uk/pusstats/>

Ferrarini, A., Fornasier, F., Serra, P., Ferrari, F., Trevisan, M., & Amaducci, S. (2017). Impacts of willow and miscanthus bioenergy buffers on biogeochemical N removal processes along the soil–groundwater continuum. *GCB Bioenergy*, 9, 246–261. <https://doi.org/10.1111/gcbb.12340>

Finch, H. J. S., Samuel, A. M., & Lane, G. P. F. (2002). *Lockhart and Wiseman's Crop Husbandry* (8th Edition). Woodhead Publishing Ltd, Cambridge, England.

Finch, J. W., Hall, R. L., Rosier, P. T. W., Clark, D. B., Stratford, C., Davies, H. N., Marsh, T.J., Roberts, J.M., Riche, A., & Christian, D. (2004). *The hydrological impacts of energy crop production in the UK*.

Finch, J. W., & Riche, A. B. (2010). Interception losses from Miscanthus at a site in south-east England—an application of the Gash model. *Hydrological Processes*, 24(18), 2594–2600. <https://doi.org/10.1002/hyp.7673>

Foley, J. A., DeFries, R., Asner, G. P., Barford, C., Bonan, G., Carpenter, S. R., Chapin F.S., Coe, M.T., Daily, G.C., Gibbs, H.K., Helowski, J.H. Holloway, T., Howard, E.A., Kucharik, C.J., Monfreda, C., Patz, J.A., Prentice, I.C., Ramankutty, N., & Snyder, P. K. (2005). Global Consequences of Land Use. *American Association for the Advancement of Science*, 309(5734), 570–574. <https://doi.org/10.1126/science.1111772>

Food and Agriculture Organisation of the United Nations (UNFAO) (c) FAO/UNESCO 1995 All rights reserved worldwide. (2003). The Digital Soil Map of the World v3.6. Retrieved February 1, 2018, from http://www.waterbase.org/download_data.html

Fox, J., & Weisberg, S. (2011). *An {R} Companion to Applied Regression* (Second). Thousand Oaks CA: Sage. Retrieved from <http://socserv.socsci.mcmaster.ca/jfox/Books/Companion>

Garbulsky, M. F., Peñuelas, J., Papale, D., Ardö, J., Goulden, M. L., Kiely, G., Richardson, A.D., Rotenberg, E., Veenendaal, E.M., & Filella, I. (2010). Patterns and controls of the variability of radiation use efficiency and primary productivity across terrestrial ecosystems. *Global Ecology*

and *Biogeography*, 19(2), 253–267.

Genever, L., & Buckingham, S. (2016). Planning grazing strategies for Better Returns. *Beef and Sheep Better Returns Programme Manual*, 26.

Gonzalez, M., Augusto, L., Gallet-Budynek, A., Xue, J., Yauschew-Raguenes, N., Guyon, D., Trichet, P., Delerue, F., Niollet, S., Andreasson, F., Achat, D.L., & Bakker, M. R. (2013). Contribution of understory species to total ecosystem aboveground and belowground biomass in temperate *Pinus pinaster* Ait. forests. *Forest Ecology and Management*, 289, 38–47. Retrieved from <http://dx.doi.org/10.1016/j.foreco.2012.10.026>

Guo, D., & Westra, S. (2016). Evapotranspiration: Modelling Actual, Potential and Reference Crop Evapotranspiration. R package. Retrieved from <https://cran.r-project.org/package=Evapotranspiration>

Guo, T., Cibin, R., Chaubey, I., Gitau, M., Arnold, J. G., Srinivasan, R., Kiniry, J.R. & Engel, B. A. (2018). Evaluation of bioenergy crop growth and the impacts of bioenergy crops on streamflow, tile drain flow and nutrient losses in an extensively tile-drained watershed using SWAT. *Science of the Total Environment*, 613–614, 724–735. <https://doi.org/10.1016/j.scitotenv.2017.09.148>

Gurnell, A., Bertoldi, W., & Corenblit, D. (2012). Changing river channels: The roles of hydrological processes, plants and pioneer fluvial landforms in humid temperate, mixed load, gravel bed rivers. *Earth-Science Reviews*, 111, 129–141. <https://doi.org/10.1016/j.earscirev.2011.11.005>

Hartwich, J., Schmidt, M., Bölscher, J., Reinhardt-Imjela, C., Murach, D., & Schulte, A. (2016). Hydrological modelling of changes in the water balance due to the impact of woody biomass production in the North German Plain. *Environmental Earth Sciences*, 75(14). <https://doi.org/10.1007/s12665-016-5870-4>

Hastings, A., Clifton-Brown, J., Wattenbach, M., Mitchell, C. P., & Smith, P. (2009). The development of MISCANFOR , a new Miscanthus crop growth model : towards more robust yield predictions under different climatic and soil conditions. *GCB Bioenergy*, 1, 154–170. <https://doi.org/10.1111/j.1757-1707.2009.01007.x>

Hastings, A., Mos, M., Yesufu, J. A., McCalmont, J., Schwarz, K., Shafei, R., Ashman, C., Nunn, C., Schuele, H., Cosentino, S., Scalici, G., Scordia, D., Wagner, M., & Clifton-Brown, J. (2017). Economic and Environmental Assessment of Seed and Rhizome Propagated Miscanthus in the UK. *Frontiers in Plant Science*, 8(June), 1–16. <https://doi.org/10.3389/fpls.2017.01058>

Hastings, A., Tallis, M. J., Casella, E., Matthews, R. W., Henshall, P. A., Milner, S., Smith, P., & Taylor, G. (2014). The technical potential of Great Britain to produce ligno-cellulosic biomass for bioenergy in current and future climates. *GCB Bioenergy*, 6(2), 108–122. <https://doi.org/10.1111/gcbb.12103>

Hess, T. M., Holman, I. P., Rose, S. C., Rosolova, Z., & Parrott, A. (2010). Estimating the impact of rural land management changes on catchment runoff generation in England and Wales. *Hydrological Processes*, 24(10), 1357–1368. <https://doi.org/10.1002/hyp.7598>

Holder, A. J., McCalmont, J. P., McNamara, N. P., Rowe, R., & Donnison, I. S. (2018).

This article is protected by copyright. All rights reserved.

Evapotranspiration model comparison and an estimate of field scale *Miscanthus* canopy precipitation interception. *GCB Bioenergy*, 10(5), 353–366. <https://doi.org/10.1111/gcbb.12503>

Hörmann, G., Branding, A., Clemen, T., Herbst, M., Hinrichs, A., & Thamm, F. (1996). Calculation and simulation of wind controlled canopy interception of a beech forest in Northern Germany. *Agricultural and Forest Meteorology*, 79(3), 131–148.

Hothorn, T., Bretz, F., & Westfall, P. (2008). Simultaneous Inference in General Parametric Models. *Biometrical Journal*, 50(3), 346–363.

Hurtado-Uria, C., Hennessey, D., Shalloo, L., O'Connor, D., & Delaby, L. (2013) Relationships between meteorological data and grass growth over time in the south of Ireland. *Irish Geography*, 46(3), 175–201. <https://doi.org/10.1080/00750778.2013.865364>

IPCC. (2014). *Summary for Policymakers. In: Climate Change 2014: Mitigation of Climate Change. Contribution of Working Group III to the Fifth Assessment Report of the Intergovernmental Panel on Climate Change* (Edenhofer, O., R. Pichs-Madruga, Y. Sokona, E. Farahani, S. Kadner, K. Seyboth, A. Adler, I. Baum, S. Brunner, P. Eickemeier, B. Kriemann, J. Savolainen, S. Schlömer, C. von Stechow, T. Zwickel & J.C. Minx Eds.). Cambridge University Press, Cambridge, United Kingdom and New York, NY, USA. <https://doi.org/10.1017/CBO9781107415324>

Jensen, K. D., Beier, C., Michelsen, A., & Emmett, B. A. (2003). Effects of experimental drought on microbial processes in two temperate heathlands at contrasting water conditions. *Applied Soil Ecology*, 24, 165–176. [https://doi.org/10.1016/S0929-1393\(03\)00091-X](https://doi.org/10.1016/S0929-1393(03)00091-X)

Knapp, A. K., Briggs, J. M., & Koelliker, J. K. (2001). Frequency and extent of water limitation to primary production in a mesic temperate grassland. *Ecosystems*, 4, 19–28. <https://doi.org/10.1007/s100210000057>

Kort, J., Collins, M., & Ditsch, D. (1998). A review of soil erosion potential associated with biomass crops. *Biomass and Bioenergy*, 14(4), 351–359. [https://doi.org/10.1016/S0961-9534\(97\)10071-X](https://doi.org/10.1016/S0961-9534(97)10071-X)

Langeveld, H., Quist-Wessel, F., Dimitriou, I., Aronsson, P., Baum, C., Schulz, U., Bolte, A., Baum, S., Kohn, J., Weih, M., Gruss, H., Leinweber, P., Lamersdorf, N., Schmidt-Walter, P., & Berndes, G. (2012). Assessing Environmental Impacts of Short Rotation Coppice (SRC) Expansion: Model Definition and Preliminary Results. *Bioenergy Research*, 5, 621–635. <https://doi.org/10.1007/s12155-012-9235-x>

Larsen, S. U., Jørgensen, U., Kjeldsen, J. B., & Lærke, P. E. (2014). Long-Term *Miscanthus* Yields Influenced by Location, Genotype, Row Distance, Fertilization and Harvest Season. *Bioenergy Research*, 7, 620–635. <https://doi.org/10.1007/s12155-013-9389-1>

Lewandowski, I., Clifton-Brown, J., Trindade, L. M., van der Linden, G. C., Schwarz, K.-U., Müller-Sämman, K., Anisimov, A., Chen, C.-L., Dolstra, O., Donnison, I.S., Farrar, K., Fonteyne, S., Harding, G., Hastings, A., Huxley, L.M., Iqbal, Y., Khokhlov, N., Kiesel, A., Lootens, P., Meyer, H., Mos, M., Muylle, H., Nunn, C., Ozguven, M., Roldan-Ruiz, I., Schule, H., Tarakanov, I., van der Weijde, T., Wagner, M., Xi, Q., & Kalinina, O. (2016). Progress on Optimizing *Miscanthus*

Biomass Production for the European Bioeconomy: Results of the EU FP7 Project OPTIMISC. *Frontiers in Plant Science*, 7, 1620. <https://doi.org/10.3389/fpls.2016.01620>

Lindegaard, K. N., Adams, P. W. R., Holley, M., Lamley, A., Henriksson, A., Larsson, S., von Engelbrechten, H.-G., Lopez, G.E., & Pisarek, M. (2016). Short rotation plantations policy history in Europe: Lessons from the past and recommendations for the future. *Food and Energy Security*, 5(3), 125–152. <https://doi.org/10.1002/fes3.86>

Linderson, M. L., Iritz, Z., & Lindroth, A. (2007). The effect of water availability on stand-level productivity, transpiration, water use efficiency and radiation use efficiency of field-grown willow clones. *Biomass and Bioenergy*, 31(7), 460–468. <https://doi.org/10.1016/j.biombioe.2007.01.014>

Lovett, A., Sünnerberg, G., & Dockerty, T. (2014). The availability of land for perennial energy crops in Great Britain. *GCB Bioenergy*, 6(2), 99–107. <https://doi.org/10.1111/gcbb.12147>

Marshall, M. R., Francis, O. J., Frogbrook, Z. L., Jackson, B. M., McIntyre, N., Reynolds, B., Solloway, I., Wheeler, H.S., & Chell, J. (2009). The impact of upland land management on flooding: results from an improved pasture hillslope. *Hydrological Processes*, 23, 464–475. <https://doi.org/10.1002/hyp.7157>

Marshall, T. J., Holmes, J. W., & Rose, C. W. (1996). *Soil Physics* (3rd ed.). Cambridge University Press, Cambridge, United Kingdom and New York, NY, USA.

McCalmont, J. P., Hastings, A., McNamara, N. P., Richter, G. M., Robson, P., Donnison, I. S., & Clifton-Brown, J. (2017). Environmental costs and benefits of growing *Miscanthus* for bioenergy in the UK. *GCB Bioenergy*, 9(3), 489–507. <https://doi.org/10.1111/gcbb.12294>

Met Office. (n.d.). UK Meteorological Data: 30 year averages. Retrieved June 14, 2018, from <https://www.metoffice.gov.uk/public/weather/climate/gcm1y0vvu>

Met Office. (2014). Climate Stations. Retrieved February 1, 2018, from <https://www.metoffice.gov.uk/climate>

Mills, S. (2016). *Wetland Conservation Biomass to Bioenergy: End User Report*. Retrieved from https://ecosystemsknowledge.net/sites/default/files/wp-content/uploads/DECC Biomass to Bioenergy End User Report_0.pdf

Milne, J. A., Pakeman, R. J., Kirkham, F. W., Jones, I. P., & Hossell, J. E. (2002). Biomass production of upland vegetation types in England and Wales. *Grass and Forage Science*, 57(4), 373–388. <https://doi.org/10.1046/j.1365-2494.2002.00339.x>

Mohr, A., & Raman, S. (2013). Lessons from first generation biofuels and implications for the sustainability appraisal of second generation biofuels. *Energy Policy*, 63, 114–122. <https://doi.org/10.1016/j.enpol.2013.08.033>

National Assembly for Wales. (2017). The Record of Proceedings, 6. Statement: Energy. Retrieved January 24, 2019, from <http://www.assembly.wales/en/bus-home/pages/rop.aspx?meetingid=4644&assembly=5&c=Record of Proceedings#C494225>

This article is protected by copyright. All rights reserved.

National Centers for Environmental Prediction (NCEP). (n.d.). Global Weather Data for SWAT. Retrieved February 1, 2018, from http://www.waterbase.org/download_data.html

Natural Environment Research Council (NERC), & Centre for Ecology & Hydrology (CEH). (n.d.). National River Flow Archive 2018. Retrieved February 1, 2018, from <https://nrfa.ceh.ac.uk>

Natural Resources Wales (NRW). (2018). GB Lakes Inventory © Natural Resources Wales and Database Right. All rights Reserved. Contains Ordnance Survey Data. Ordnance Survey Licence number 100019741. Crown Copyright and Database Right. Retrieved February 1, 2018, from <http://lle.gov.wales/catalogue/item/GBLakesInventoryEnglandWales/?lang=en>

Neitsch, S., Arnold, J., Kiniry, J., & Williams, J. (2011). SWAT Theoretical Documentation Version 2009. *Texas Water Resources Institute*, 1–647. <https://doi.org/10.1016/j.scitotenv.2015.11.063>

Neukirchen, D., Himken, M., Lammel, J., Czymionka-Krause, U., & Olf, H.-W. (1999). Spatial and temporal distribution of the root system and root nutrient content of an established *Miscanthus* crop. *European Journal of Agronomy*, 11, 301–309.

Ng, T. L., Eheart, J. W., Cai, X., & Miguez, F. (2010). Modeling miscanthus in the Soil and Water Assessment Tool (SWAT) to simulate its water quality effects as a bioenergy crop. *Environmental Science and Technology*, 44(18), 7138–7144. <https://doi.org/10.1021/es9039677>

Nguyen, T. L. T., & Hermansen, J. E. (2015). Life cycle environmental performance of miscanthus gasification versus other technologies for electricity production. *Sustainable Energy Technologies and Assessments*, 9, 81–94. <https://doi.org/10.1016/j.seta.2014.12.005>

Nisbet, T. (2005). Water Use by Trees - Forestry Commission Information Note FCIN065, 1–8. Retrieved from [https://www.forestry.gov.uk/pdf/FCIN065.pdf/\\$file/FCIN065.pdf%0Ahttp://www.forestry.gov.uk/pdf/fcin065.pdf](https://www.forestry.gov.uk/pdf/FCIN065.pdf/$file/FCIN065.pdf%0Ahttp://www.forestry.gov.uk/pdf/fcin065.pdf)

Oak Ridge National Laboratory Distributed Active Archive Center (ORNL DAAC). (n.d.). A Global Database of Field-observed Leaf Area Index in Woody Plant Species, 1932-2011. Retrieved February 1, 2018, from https://daac.ornl.gov/VEGETATION/guides/LAI_Woody_Plants.html

Ordnance Survey. (2018). OS Terrain 50 & OS Open Rivers (c) Crown copyright and database right 2018. Retrieved February 1, 2018, from <https://www.ordnancesurvey.co.uk/business-and-government/products/terrain-50.html>

Organisation for Economic Co-operation and Development (OECD). (2016). *Mitigating Droughts and Floods in Agriculture: Policy Lessons and Approaches*. OECD Publishing, Paris. Retrieved from <https://dx.doi.org/10.1787/9789264246744-en>

Pellis, A., Laureysens, I., & Ceulemans, R. (2004). Growth and production of a short rotation coppice culture of poplar I. Clonal differences in leaf characteristics in relation to biomass production. *Biomass and Bioenergy*, 27(1), 9–19. <https://doi.org/10.1016/j.biombioe.2003.11.001>

Pinheiro, J., Bates, D., DebRoy, S., Sarkar, D., & R Core Team. (2017). nlme: Linear and Nonlinear

Mixed Effects Models. R package version 3.1-131. Retrieved from <https://cran.r-project.org/package=nlme>

- Poff, N. L., Richter, B. D., Arthington, A. H., Bunn, S. E., Naiman, R. J., Kendy, E., Acreman, M., Apse, C., Bledsoe, B.P., Freeman, M.C., Henriksen, J., Jacobson, R.B., Kennen, J.G., Merritt, D.M., O'Keeffe, J.H., Olden, J.D., Rogers, K., Tharme, R.E., & Warner, A. (2010). The ecological limits of hydrologic alteration (ELOHA): A new framework for developing regional environmental flow standards. *Freshwater Biology*, *55*, 147–170. <https://doi.org/10.1111/j.1365-2427.2009.02204.x>
- Poff, N. L., & Zimmerman, J. K. H. (2010). Ecological responses to altered flow regimes: A literature review to inform the science and management of environmental flows. *Freshwater Biology*, *55*, 194–205. <https://doi.org/10.1111/j.1365-2427.2009.02272.x>
- QGIS (Development Team). (2014). QGIS Geographic Information System. Open Source Geospatial Foundation Project. Retrieved from <http://qgis.osgeo.org>
- Quaye, A. K., & Volk, T. A. (2013). Biomass production and soil nutrients in organic and inorganic fertilized willow biomass production systems. *Biomass and Bioenergy*, *57*, 113–125. <https://doi.org/10.1016/j.biombioe.2013.08.002>
- R Core Team. (2015). R: A language and environment for statistical computing. R Foundation for Statistical Computing, Vienna, Austria. URL <https://www.R-project.org/>.
- Richter, G. M., Riche, A. B., Dailey, A. G., Gezan, S. A., & Powlson, D. S. (2008). Is UK biofuel supply from Miscanthus water-limited? *Soil Use and Management*, *24*(3), 235–245. <https://doi.org/10.1111/j.1475-2743.2008.00156.x>
- Rowe, R. L., Street, N. R., & Taylor, G. (2009). Identifying potential environmental impacts of large-scale deployment of dedicated bioenergy crops in the UK. *Renewable and Sustainable Energy Reviews*, *13*(1), 271–290. <https://doi.org/10.1016/j.rser.2007.07.008>
- Rowland, C. S., Morton, R. D., Carrasco, L., McShane, G., O'Neil, A. W., & Wood, C. M. (2017). Land Cover Map 2015 (25m raster, GB). *NERC Environmental Information Data Centre*. Retrieved from <https://doi.org/10.5285/bb15e200-9349-403c-bda9-b430093807c7>
- Schmidt-Walter, P., & Lamersdorf, N. P. (2012). Biomass Production with Willow and Poplar Short Rotation Coppices on Sensitive Areas—the Impact on Nitrate Leaching and Groundwater Recharge in a Drinking Water Catchment near Hanover, Germany. *Bioenergy Research*, *5*(3), 546–562. <https://doi.org/10.1007/s12155-012-9237-8>
- Shafroth, P. B., Wilcox, A. C., Lytle, D. A., Hickey, J. T., Andersen, D. C., Beauchamp, V. B., Hautzinger, A., McMullen, L.E. & Warner, A. (2010). Ecosystem effects of environmental flows: modelling and experimental floods in a dryland river. *Freshwater Biology*, *55*, 68–85. <https://doi.org/10.1111/j.1365-2427.2009.02271.x>
- Smit, H. J., Metzger, M. J., & Ewert, F. (2008). Spatial distribution of grassland productivity and land use in Europe. *Agricultural Systems*, *98*(3), 208–219. <https://doi.org/10.1016/j.agsy.2008.07.004>

Smith, P., Martino, D., Cai, Z., Gwary, D., Janzen, H., Kumar, P., McCarl, B., Ogle, S., O'Mara, F., Rice, C., Scholes, B., Sirotenko, O., Howden, M., McAllister, T., Pan, G., Romanenkov, V., Schneider, U., Towprayoon, S., Wattenbach, M., & Smith, J. (2008). Greenhouse gas mitigation in agriculture. *Philosophical Transactions of the Royal Society B: Biological Sciences*, 363(1492), 789–813. <https://doi.org/10.1098/rstb.2007.2184>

Soil Conservation Service. (1976). Section 4: Hydrology. In *National Engineering Handbook*. SCS.

Stephens, W., Hess, T., & Knox, J. (2001). *Review of the effects of energy crops on hydrology*. Retrieved from <https://dspace.lib.cranfield.ac.uk/handle/1826/3368>

Taube, F., Gierus, M., Hermann, A., Loges, R., & Schönbach, P. (2014). Grassland and globalization - challenges for north-west European grass and forage research. *Grass and Forage Science*, 69(1), 2–16. <https://doi.org/10.1111/gfs.12043>

Terravesta Ltd. (2018). Retrieved November 23, 2018, from <https://www.terravesta.com>

Trybula, E. M., Cibin, R., Burks, J. L., Chaubey, I., Brouder, S. M., & Volenec, J. J. (2015). Perennial rhizomatous grasses as bioenergy feedstock in SWAT: Parameter development and model improvement. *GCB Bioenergy*, 7(6), 1185–1202. <https://doi.org/10.1111/gcbb.12210>

United States Department of Agriculture (USDA). (1986). *Urban Hydrology for Small Watersheds - TR55. Technical Release 55*. [https://doi.org/Technical Release 55](https://doi.org/Technical%20Release%2055)

Vanloocke, A., Bernacchi, C. J., & Twine, T. E. (2010). The impacts of *Miscanthus x giganteus* production on the Midwest US hydrologic cycle. *Global Change Biology Bioenergy*, 2(4), 180–191. [https://doi.org/DOI 10.1111/j.1757-1707.2010.01053.x](https://doi.org/DOI%2010.1111/j.1757-1707.2010.01053.x)

Verlinden, M. S., Broeckx, L. S., Van den Bulcke, J., Van Acker, J., & Ceulemans, R. (2013). Comparative study of biomass determinants of 12 poplar (*Populus*) genotypes in a high-density short-rotation culture. *Forest Ecology and Management*, 307, 101–111. <https://doi.org/10.1016/j.foreco.2013.06.062>

Wang, D., Li, J. S., & Rao, M. J. (2006). Winter wheat canopy interception under sprinkler irrigation. *Scientia Agricultura Sinica*, 39(9), 1859–1864.

Welsh Government. (2018). *Welsh Agricultural Statistics 2016*. <https://doi.org/10.1039/c0mt00106f>

Wang, G., Jager, H. I., Baskaran, L. M., & Brandt, C. C. (2018). Hydrologic and water quality responses to biomass production in the Tennessee river basin. *GCB Bioenergy*, (May), 877–893. <https://doi.org/10.1111/gcbb.12537>

Weih, M., & Nordh, N. E. (2002). Characterising willows for biomass and phytoremediation: Growth, nitrogen and water use of 14 willow clones under different irrigation and fertilisation regimes. *Biomass and Bioenergy*, 23(6), 397–413. [https://doi.org/10.1016/S0961-9534\(02\)00067-3](https://doi.org/10.1016/S0961-9534(02)00067-3)

Welsh Government. (n.d.). Agricultural Land Classification Map. Retrieved November 27, 2018, from <https://beta.gov.wales/agricultural-land-classification-predictive-map>

Yang, Q., & Zhang, X. (2016). Improving SWAT for simulating water and carbon fluxes of forest

This article is protected by copyright. All rights reserved.

ecosystems. *Science of the Total Environment*, 569–570, 1478–1488.
<https://doi.org/10.1016/j.scitotenv.2016.06.238>

Accepted Article

Table 1 Description of data used within the SWAT hydrology model with source reference.

Data type	Resolution	Source
Digital Elevation Model	50 m	OS Terrain 50 (Ordnance Survey, 2018)
Soil	1 km	Soil Parent Material (British Geological Survey Materials, 2018)
	5 km	The Digital Soil Map of the World v3.6 (UNFAO, 2003)
Land use	25 m	Land Cover Map 2015 (Rowland <i>et al.</i> , 2017)
River network	15-30 m	OS Open Rivers (Ordnance Survey, 2018)
Inland water bodies	—	UK Lakes Portal (CEH, n.d.)
	—	GB Lakes Inventory (NRW, 2018)
Streamflow	7 locations	National River Flow Archive 2018 (NERC & CEH, n.d.)
Climate	19 locations	National Centres for Environment Prediction (NCEP, n.d.)
	4 locations	Met Office climate data (Met Office, 2014)

Table 2 Main plant growth inputs for the land use change crops used in the simulations: Pasture (based on the SWAT land use code CRDY), *Miscanthus* and Short Rotation Coppice. Values were taken from the SWAT database (SWAT: crop), measurements), or from the ranges suggested in the references. Where no reference is listed a best estimation value was used.

Input description	Pasture (CRDY)	<i>Miscanthus</i>	Short Rotation Coppice
Radiation use efficiency (kg ha ⁻¹ /MJ m ⁻²)	10 (Belanger <i>et al.</i> , 1994; Cristiano <i>et al.</i> , 2015)	42 (Trybula <i>et al.</i> , 2015) Measurements	28 (Bullard <i>et al.</i> , 2002; Linderson <i>et al.</i> , 2007; Verlinden <i>et al.</i> , 2013)
Max. stomatal conductance (m s ⁻¹)	0.005 (SWAT: Tall Fescue)	0.005 (Beale <i>et al.</i> , 1996; Clifton-Brown & Lewandowski, 2000)	0.004 (SWAT: poplar)
Light extinction coefficient	0 (SWAT: Tall Fescue)	0.68 (Clifton-Brown & Lewandowski, 2000)	0.5 (Linderson <i>et al.</i> , 2007)
Max. leaf area index	4 (Asner <i>et al.</i> , 2003)	11 (Trybula <i>et al.</i> , 2015)	9 (Pellis <i>et al.</i> , 2004; Schmidt-Walter & Lamersdorf, 2012; Hartwich <i>et al.</i> , 2016)
Min. leaf area index during dormancy	0.8	0 (Trybula <i>et al.</i> , 2015; Guo <i>et al.</i> , 2018)	0.75 (SWAT: poplar)
Max. canopy storage (mm)	0	2.2 (Stephens <i>et al.</i> , 2001)	2.2 (Stephens <i>et al.</i> , 2001; Schmidt-Walter & Lamersdorf, 2012)
Max. canopy height (m)	0.75	3 Measurements	8 (Hartwich <i>et al.</i> , 2016)
Max. root depth	2 (SWAT: Tall	2.5	2

(m)	Fescue)	(Neukirchen <i>et al.</i> , 1999)	(Hartwich <i>et al.</i> , 2016)
Optimum temperature (°C)	15 (SWAT: Tall Fescue)	20	15
Base temperature (°C)	0 (SWAT: Tall Fescue; Hurtado-Uria <i>et al.</i> , 2013)	8 (Hastings <i>et al.</i> , 2009)	5 (Hartwich <i>et al.</i> , 2016)

Table 3 Main plant growth values used in the simulations for the land use types of arable (AGRL), lawn grass (BERM), natural grassland (FESC), evergreen forest (FRSE), heather/shrub grassland (MIGS), deciduous woodland (OAK), heather (SHRB) and fen/marsh/bog/saltmarsh (WETL). The model input variable name (Code) and references are shown where used (SWAT denotes the SWAT database).

Description	Code	AGRL	BERM	FESC	FRSE	MIGS	OAK	SHRB	WETL
Radiation use efficiency (kg ha ⁻¹ /MJ m ⁻²)	BIO_E	33.5 (SWAT)	10 (Belanger <i>et al.</i> , 1994)	15 (Belanger <i>et al.</i> , 1994; Cristiano <i>et al.</i> , 2015)	15 (SWAT)	2 (Garbulsky <i>et al.</i> , 2010)	2 (Garbulsky <i>et al.</i> , 2010)	2 (Garbulsky <i>et al.</i> , 2010)	5 (Garbulsky <i>et al.</i> , 2010)
Max. leaf area index	BLAI	5 (Asner <i>et al.</i> , 2003; AHDB 2018)	4 (SWAT)	4 (SWAT)	6 (Asner <i>et al.</i> , 2003)	4 (Asner <i>et al.</i> , 2003)	6.5 (Asner <i>et al.</i> , 2003; ORNL DAAC, n.d.)	3.5 (Asner <i>et al.</i> , 2003; Gonzalez <i>et al.</i> , 2013)	5 (Asner <i>et al.</i> , 2003)
Max. canopy storage (mm)	CANMX	0.8 (Wang <i>et al.</i> , 2006)	—	1.2 (Burgy <i>et al.</i> , 1958)	3.7 (Hörmann <i>et al.</i> , 1996)	1.5 (Dunkerley, 2000)	2.3 (Hörmann <i>et al.</i> , 1996)	1.5 (Dunkerley, 2000)	1.2 (Burgy <i>et al.</i> , 1958)
Optimum temperature (°C)	TOPT	20 (Finch <i>et al.</i> , 2002)	15 (SWAT: FESC)	15 (SWAT)	20	15 (SWAT: FESC)	15 (Bequet <i>et al.</i> , 2011)	15	15

Base temperature (°C)	TBASE	5 (Finch <i>et al.</i> , 2002)	0 (SWAT: FESC)	0 (SWAT)	0 (SWAT)	0 (SWAT: FESC)	5 (Bequet <i>et al.</i> , 2011)	0	5
Fraction of tree biomass converted to residue	BIO_LEAF	—	—	—	0.0045 (Yang & Zhang, 2016)	—	0.003 (Yang & Zhang, 2016)	—	—
No. years to tree maturity	MAT_YRS	—	—	—	30 (SWAT)	—	100	—	—

Table 4 Model inputs relating to *Miscanthus* above ground biomass nutrient contents (N nitrogen, P phosphorus) and residue decomposition rate. 'Source reference' details whether the value used for the SWAT model input (Code) was sourced from literature (reference given) or derived from sampling at the field site within the watershed (measurement, with month samples taken).

Description	Code	Value	Source reference
fraction N in yield	CNYLD	0.0032	measurement (February)
fraction P in yield	CPYLD	0.0005	measurement (February)
fraction N in biomass at emergence	BN1	0.024	measurement (June)
fraction N in biomass at 50% maturity	BN2	0.009	measurement (August)
fraction N in biomass at maturity	BN3	0.005	(Ng <i>et al.</i> , 2010; Trybula <i>et al.</i> , 2015; Guo <i>et al.</i> , 2018)
fraction P in biomass at emergence	BP1	0.0024	measurement (June)
fraction P in biomass at 50% maturity	BP2	0.0016	measurement (August)
fraction P in biomass at maturity	BP3	0.0009	(Trybula <i>et al.</i> , 2015)
plant residue decomposition coefficient (fraction)	RDSCO_PL	0.002	(Amougou <i>et al.</i> , 2012)

Table 5 Results of the correlation (R^2 and Nash Sutcliffe (NS) values) between the observed streamflow at the calibration (C1-C4) and validation (V1-V3) locations (Fig. 2) and the streamflow predictions for the relevant sub-basin.

Location	R^2	NS
C1	0.65	0.50
C2	0.73	0.67
C3	0.84	0.67
C4	0.83	0.81
V1	0.87	0.56
V2	0.76	0.59
V3	0.88	0.76

Table 6 Values used for the SWAT input codes (Code) controlling water erosion (USLE_C) and surface run off via Manning's N roughness coefficient (OV_N) and Soil Conservation Service Curve Number for each hydrological soil group (SCS A – D, USDA, 1986). Details shown are for the land use types of arable (AGRL), lawn grass (BERM), improved grass pasture (CRDY), natural grassland (FESC), evergreen forest (FRSE), heather/shrub grassland (MIGS), deciduous woodland (OAK), heather (SHRB) and fen/marsh/bog/saltmarsh (WETL). Source reference or SWAT database crop type are shown for the land use change crops of CRDY, *Miscanthus* (MSXG) and short rotation coppice (WSRC).

Code	AGRL	BERM	CRDY	FESC	FRSE	MIGS	MSXG	OAK	SHRB	WETL	WSRC
USLE_C	0.2	0.003	0.003	0.003	0.001	0.003	0.003	0.001	0.003	0.003	0.001
			(SWAT: pasture)				(SWAT: alamo)				(SWAT: poplar)
OV_N	0.14	0.1	0.15	0.1	0.1	0.15	0.24	0.14	0.15	0.05	0.14
			(SWAT: pasture)				(Cibin <i>et al.</i> , 2015)				(SWAT: poplar)
SCS_A	72	49	68	49	45	48	31	45	48	49	30
SCS_B	81	69	79	69	66	67	59	66	67	69	55
SCS_C	88	79	86	79	77	77	72	77	77	79	70
SCS_D	91	84	89	84	83	83	79	83	83	84	77
			(Hess <i>et al.</i> , 2010; USDA, 1986: grazed, no mulch)				(Cibin <i>et al.</i> , 2015)				(USDA, 1986: trees, good)

Table 7 SWAT simulated and reference mean biomass (for the month of August, 2004 to 2013) or yield (Y & harvest month) in dry mass units of Mg DM ha⁻¹. The SWAT database code used as the basis for each land use is shown, short rotation coppice (WSRC) and *Miscanthus* (MSXG) were added to the internal project database.

Land Use	Code	Simulated (Standard Deviation)	Reference
Cereals/Oil Seed Rape	AGRL	Y Aug: 4 (2.5)	7 Cereals, 3 Oil Seed Rape (DEFRA, 2017)
Urban grass (mowed)	BERM	1.5 (0.4)	~4 cm sward height
Improved pasture (grazed)	CRDY	2.86 (2.6)	~2 depending on grazing strategy (Genever & Buckingham, 2016)
Natural grassland (light grazing)	FESC	3.5 (0.3)	3-7 (Mills, 2016); 1-3 (Milne, <i>et al.</i> , 2002)
Heather/shrub grassland	MIGS	9.75 (2.78)	6-27 (Mills, 2016) ; 5-10 (Milne <i>et al.</i> , 2002)
Heather	SHRB	9.10 (2.26)	6-10 (Mills, 2016); 5-10 (Milne <i>et al.</i> , 2002)
Fen/marsh/bog/saltmarsh	WETL	14.78 (10.74)	1-22 (Mills, 2016)
Short rotation coppice	(WSRC)	Y Nov: 13.71 (8.02)	5-16 (Aylott <i>et al.</i> , 2008); 10-15 (Cunniff <i>et al.</i> , 2015)
<i>M. x giganteus</i>	(MSXG)	Y Nov: 14.74 (9.92)	14 (Larsen <i>et al.</i> , 2014); 15 measurements

Table 8 Mean annual sub-basin surface runoff (SURQ), baseflow (GWQ), soil water content (SW), evapotranspiration (ET), and water yield (WY) in mm, and streamflow (daily mean, m^3s^{-1}) for each of the scenarios (standard error shown in brackets). The scenarios reflect planting *Miscanthus* (M) or short rotation coppice (SRC) on approximately 50% (2192 km^2) and 25% (1096 km^2) of existing improved pasture areas compared to the baseline (Base) of no land use change. Significance ($p < 0.001$) is shown for Base vs M/SRC.

	Base	25%		50%	
	(mm)	M	SRC	M	SRC
SURQ	344 ⁽⁴⁾	314 ^{(3)***}	311 ^{(3)***}	284 ^{(3)***}	278 ^{(3)***}
GWQ	387 ⁽²⁾	417 ^{(2)***}	413 ^{(2)***}	477 ^{(2)***}	439 ^{(2)***}
SW	166 ^(0.3)	166 ^(0.3)	166 ^(0.3)	167 ^(0.3)	167 ^(0.3)
ET	678 ⁽¹⁾	677 ⁽¹⁾	684 ^{(1)***}	676 ⁽¹⁾	691 ^{(1)***}
WY	851 ⁽³⁾	852 ⁽³⁾	845 ⁽³⁾	853 ⁽³⁾	838 ^{(3)***}
Flow out	1.27 ^(0.13)	1.25 ^(0.14)	1.24 ^(0.13)	1.25 ^(0.14)	1.24 ^(0.13)

Significance denoted by “***”

Fig 1 Environment Agency England and Wales Water Framework Directive river basin districts. The area covered by the West Wales River Basin used in this study is shown in black. This figure contains public sector information licensed under the Open Government Licence v3.0.

Fig 2 Land use as represented in the baseline SWAT model for west Wales watershed (based on the Land Cover Map 2015, Table 1). Observed river flow from calibration (C1 to C4) and validation (V1 to V3) gauging stations was used to calibrate SWAT model predictions. Weather data was obtained from the National Centers for Environmental Prediction (NCEP) climate locations and UK Met Office climate stations. Potential evapotranspiration (PET) was calculated using data from the circled climate location.

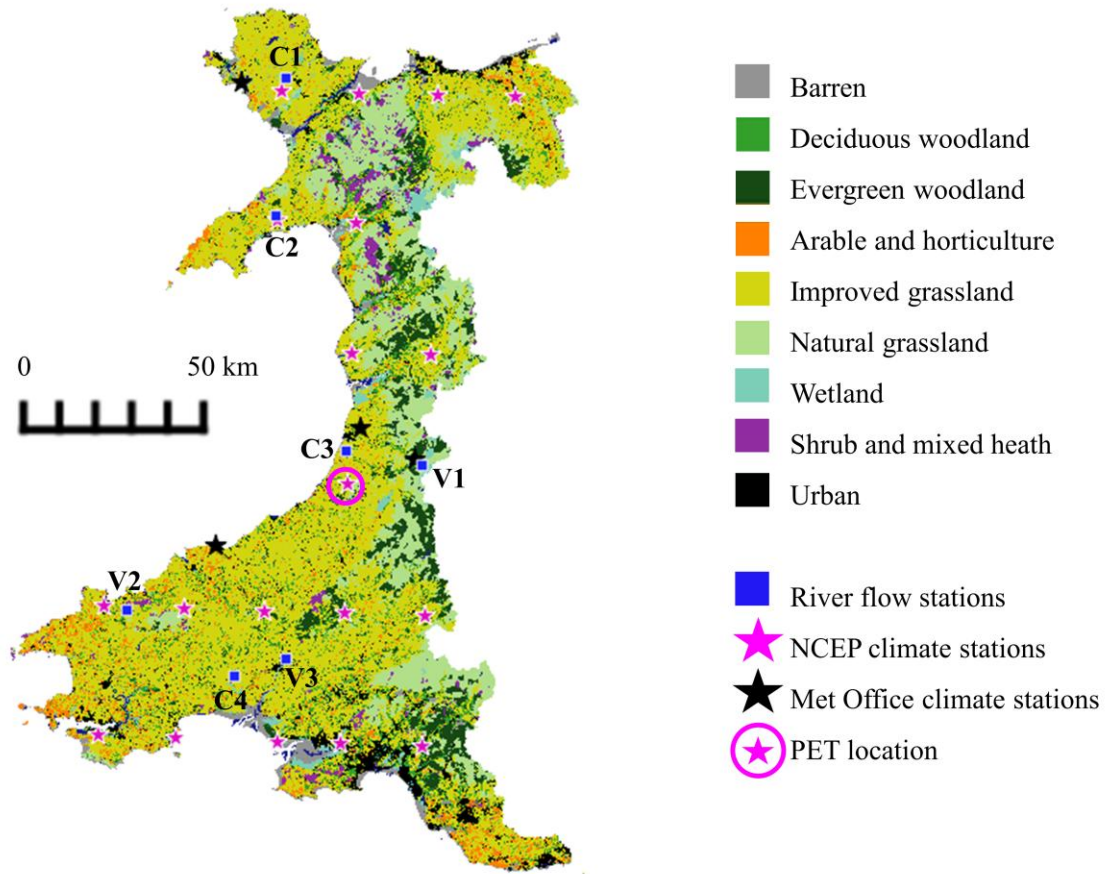
Fig 3 The West Wales River Basin District watershed delineated into 855 sub-basins. The spread of the **(a)** maximum and **(b)** limited land use change scenarios (50% and 25%, respectively, of improved pasture in each sub-basin) is represented.

Fig 4 Percentage difference in the mean monthly **(a)** surface runoff (SURQ) **(b)** baseflow (GWQ) **(c)** evapotranspiration (ET) and **(d)** water yield (WY), based on the 10 year simulation period, for each of the land use change scenarios compared to the baseline scenario of no land use conversion. The scenarios shown are *Miscanthus* (M50 and M25) and short rotation coppice (SRC50 and SRC25) planted on approximately 50% (2192 km²) or 25% (1096 km²) of improved pasture areas on or below a 15% slope.

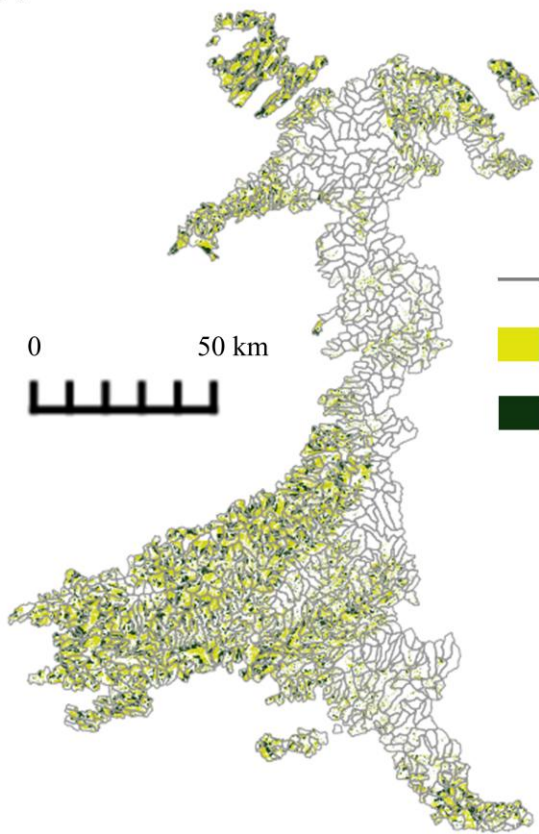
Fig 5 Mean percentage change in streamflow compared to the baseline. The change was the same for each of the land use change scenarios, and the percentage shown were the same for each crop type and land use change level.

Fig 6 Percentage difference in mean annual **(a)** surface runoff (SURQ), **(b)** baseflow (GWQ), **(c)** evapotranspiration (ET) and **(d)** water yield (WY) over the 10 year simulation period for the maximum land use change scenarios compared to the baseline case of no land use conversion. The scenarios shown are *Miscanthus* (M50) and short rotation coppice (SRC50) planted on approximately 50% (2192 km²) of improved pasture areas on or below a 15% slope.





(a)



(b)

