

Aberystwyth University

A user-friendly software to easily count Anopheles egg batches

Mollahosseini, Ali; Rossignol, Marie; Pennetier, Cédric; Cohuet, Anna; Anjos, António Dos; Chandre, Fabrice; Shahbazkia, Hamid Reza

Published in:
Parasites & Vectors

DOI:
[10.1186/1756-3305-5-122](https://doi.org/10.1186/1756-3305-5-122)

Publication date:
2012

Citation for published version (APA):

Mollahosseini, A., Rossignol, M., Pennetier, C., Cohuet, A., Anjos, A. D., Chandre, F., & Shahbazkia, H. R. (2012). A user-friendly software to easily count Anopheles egg batches. *Parasites & Vectors*, 5(1), [122]. <https://doi.org/10.1186/1756-3305-5-122>

Document License CC BY

General rights

Copyright and moral rights for the publications made accessible in the Aberystwyth Research Portal (the Institutional Repository) are retained by the authors and/or other copyright owners and it is a condition of accessing publications that users recognise and abide by the legal requirements associated with these rights.

- Users may download and print one copy of any publication from the Aberystwyth Research Portal for the purpose of private study or research.
- You may not further distribute the material or use it for any profit-making activity or commercial gain
- You may freely distribute the URL identifying the publication in the Aberystwyth Research Portal

Take down policy

If you believe that this document breaches copyright please contact us providing details, and we will remove access to the work immediately and investigate your claim.

tel: +44 1970 62 2400
email: is@aber.ac.uk

RESEARCH

Open Access

A user-friendly software to easily count *Anopheles* egg batches

Ali Mollahosseini¹, Marie Rossignol², Cédric Pernetier^{3,4}, Anna Cohuet², António dos Anjos⁵, Fabrice Chandre² and Hamid Reza Shahbazkia^{1*}

Abstract

Background: Studies on malaria vector ecology and development/evaluation of vector control strategies often require measures of mosquito life history traits. Assessing the fecundity of malaria vectors can be carried out by counting eggs laid by *Anopheles* females. However, manually counting the eggs is time consuming, tedious, and error prone.

Methods: In this paper we present a newly developed software for high precision automatic egg counting. The software written in the Java programming language proposes a user-friendly interface and a complete online manual. It allows the inspection of results by the operator and includes proper tools for manual corrections. The user can in fact correct any details on the acquired results by a mouse click. Time saving is significant and errors due to loss of concentration are avoided.

Results: The software was tested over 16 randomly chosen images from 2 different experiments. The results show that the proposed automatic method produces results that are close to the ground truth.

Conclusions: The proposed approaches demonstrated a very high level of robustness. The adoption of the proposed software package will save many hours of labor to the bench scientist. The software needs no particular configuration and is freely available for download on: <http://w3.uaig.pt/~hshah/eggcounter/>.

Background

Understanding the ecology and evolution of malaria vector species and populations is a key factor in controlling the disease they carry [1]. In several contexts, the estimation of the fitness of *Anopheles* mosquitoes is required. For instance, this may help to understand adaptation of different populations to given environmental conditions [2-4] or the opposite [5-7], interactions between the vectors and the parasites [8-12] or the vertebrate hosts [13]. More directly related to vector control, fitness measures can help deciphering the effect of insecticides [14], including new classes of insect growth regulators [15], effect of insecticide resistance [16,17], genetic manipulation of vector populations to make them resistant to parasites [18,19], or to impede their reproductive success. The

fecundity is a key variable to assess the fitness of populations. In mosquitoes, it can be measured at several stages, but the number of eggs laid by females is often considered as a good estimate. Depending on the case study, the experiments may involve hundreds of females, possibly over many gonotrophic cycles and generations. As female *Anopheles* can lay over one hundred eggs every 2-3 days, one experiment only, often involves counting thousands of eggs [20,21]. Such a task is obviously tedious, time-consuming and prone to errors. These facts make the identification and counting of eggs a natural task for automation.

As software capable of correctly counting *Anopheles* eggs laid on filter paper was not available, we developed a fully automatic software together with its own user-friendly interface. Egg-Counter v1.0 has the capacity of counting individual eggs as well as eggs laid in piles. At first, it counts the eggs laid on the paper, excluding the debris. Then, the user is able to modify any details of the presented result by means of a provided user-friendly

*Correspondence: hshah@uaig.pt

¹Departamento de Engenharia Eletrónica e Informática, Universidade do Algarve, 8008-139 Faro, Portugal

Full list of author information is available at the end of the article

interface. The software was tested by comparing the automatic and manually corrected results with the number of manually counted eggs, and a precision of 98% was obtained. Egg-Counter is fully written in Java and, therefore, completely platform-independent; it can be downloaded, installed and used within a couple of minutes.

The rest of this paper is organized as follows: In Methods, the proposed method for processing the images is elaborated. A brief description of the software provided and its features are introduced in Software. Experimental results on 16 different images, taken in different experiments are presented in Results and Discussion.

Methods

Figure 1 shows the diagram of the proposed algorithm for counting the eggs of an image. First the color image is converted to a grayscale by flattening the image. A binary map is extracted from the grayscale version of the image by means of image thresholding. Then, each connected component in the map is extracted as an object. To make the software as independent as possible from image resolutions and the camera settings, objects containing just one egg are detected and the size of one egg is estimated. Debris objects are detected and removed based on the original color image. Finally noise is removed and the number of eggs inside each of the remaining objects is calculated according to the estimated size of one egg.

Grayscale Conversion

Color images are converted to grayscale images. Luminance is typically computed as a weighed sum of the color components. The most often used weights were originally developed for encoding analog color television signals as:

$$I_i = 0.299 \times R_i + 0.587 \times G_i + 0.114 \times B_i, \quad (1)$$

where R_i , G_i and B_i are the intensity levels of the red, green, and blue channels of the i^{th} pixel respectively. Figures 2(a) and 2(b) show a sample color image of the mosquitoes' eggs and its resulting grayscale version.

Image Thresholding

As shown in Figure 2(b), the eggs and debris are the dark objects on the white paper. Therefore, a proper binary map of the image can be used to distinguish them from the background. This binary map is defined as:

$$B_i = \begin{cases} 1, & \text{if } I_i \geq T_{\text{auto}} \\ 0, & \text{otherwise.} \end{cases} \quad (2)$$

Where B_i and I_i are the binary value and intensity of the i^{th} pixel respectively and T_{auto} is the automatic threshold

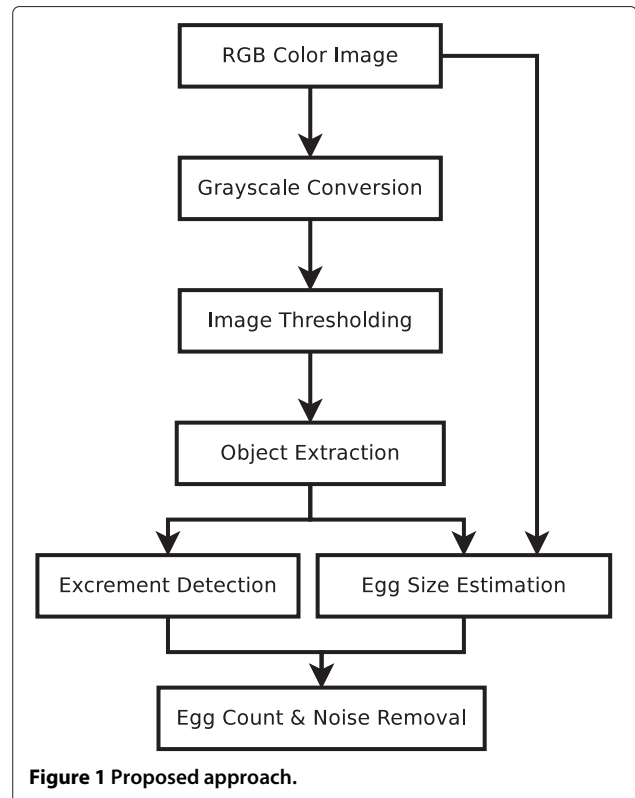


Figure 1 Proposed approach.

value based on an entropic thresholding method proposed in [22] as:

$$\arg \max_T C_B(T) + C_F(T), \quad (3)$$

with

$$C_B(T) = -\log \sum_{g=0}^T \left(\frac{p(g)}{p(T)} \right)^2, \quad (4)$$

and

$$C_F(T) = -\log \sum_{g=T+1}^{T'} \left(\frac{p(g)}{1 - p(T)} \right)^2. \quad (5)$$

Where T_{auto} is the value of T that makes $C_B(T) + C_F(T)$ maximum, $p(g)$ is the probability of intensity level g and $p(T)$ is the cumulative probability function. Unlike the original method [22], here T' controls the maximum value

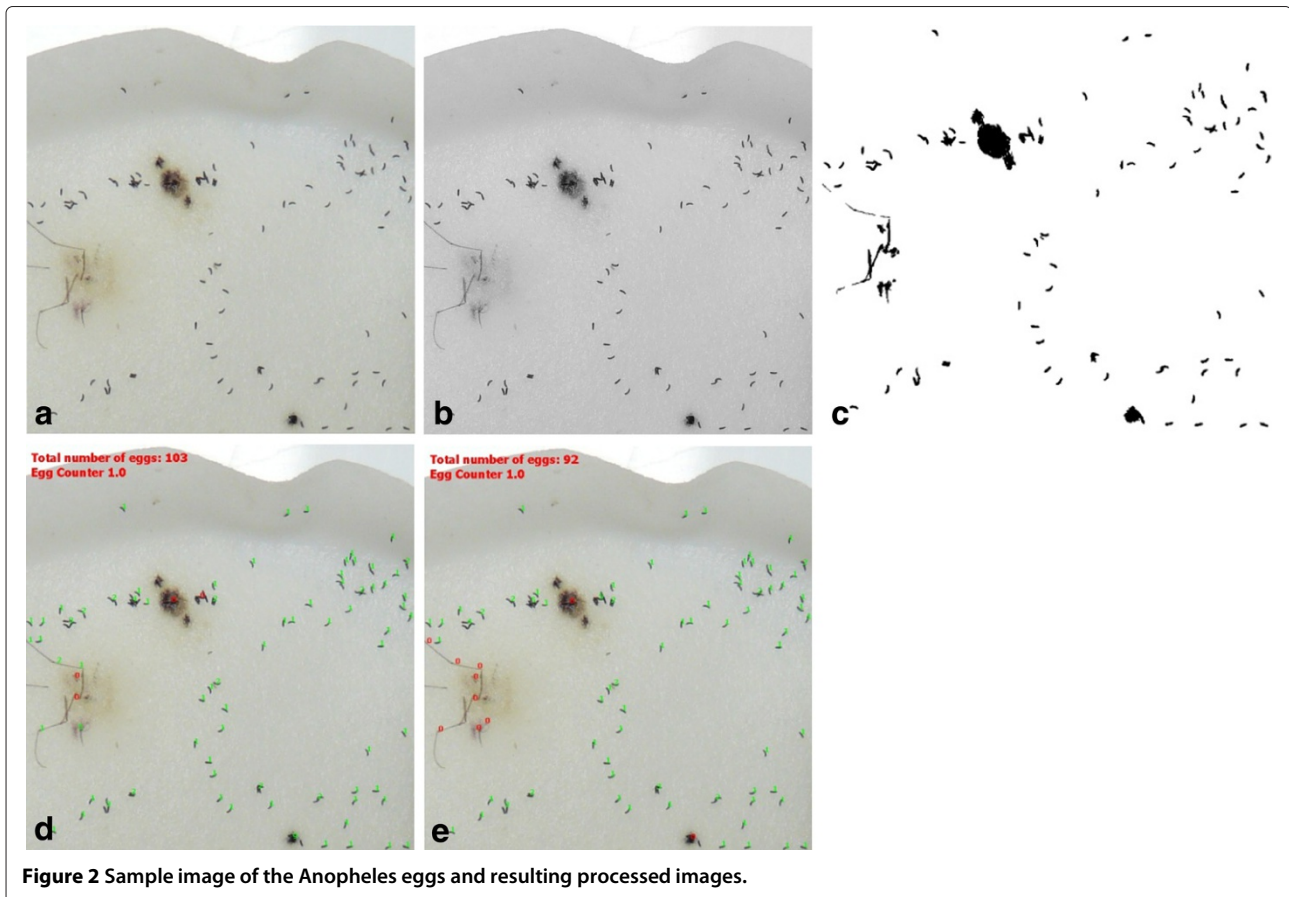


Figure 2 Sample image of the *Anopheles* eggs and resulting processed images.

of threshold in order to remove high exposure in the images caused by flash where empirically $T' \in [160, 180]$. Figure 2(c) shows the resulting binary map of the sample image. As it is shown eggs and debris are properly extracted, after the automatic threshold is found.

Object Extraction

In this step eggs and debris are detected by extracting eight-connected neighborhood components. Putting it simply, connected component labeling is the process of assigning labels to the foreground elements in such a way that adjacent foreground elements are assigned to the same label [23]. Here, adjacent means 8-adjacent pixels neighborhood.

Egg Size Estimation

Usually, a single mosquito egg has an elongated ellipse shape, while a pile of eggs looks more circular (see Figure 2(b)). Therefore, the eccentricity of the object is used to distinguish single eggs from the piles of eggs. Eccentricity measures how much an object deviates from being circular. It is the ratio of the distance between the foci and its major axis length [24], defined as:

$$e = \sqrt{1 - \frac{\lambda_1}{\lambda_2}}, \quad (6)$$

$$\lambda_i = \frac{\mu'_{20} + \mu'_{02}}{2} \pm \frac{\sqrt{4\mu'_{11} + (\mu'_{20} - \mu'_{02})^2}}{2}. \quad (7)$$

Where μ'_{mn} is the central moment of order (m, n) , defined as:

$$\mu'_{mn} = \sum_{(u,v) \in R} (u - \bar{x})^p (v - \bar{y})^q, \quad (8)$$

where (\bar{x}, \bar{y}) is the centroid of the object and $(u, v) \in R$ represents whole set of pixel coordinates inside the object. The value of the eccentricity falls in the interval $[0, 1]$. A value of one indicates a perfect circle and zero indicates a line segment. In this step, the objects with high eccentricity, $e_1 < e < e_2$, are selected as eggs. Values of e_1, e_2 can be set from 0.95 up to 0.99. Experimental results show that more than 80% of the components containing one egg are in this range. Finally, the mode of the size of the candidate objects is chosen as the estimated size for one egg.

Debris Detection

Debris are black regions extracted on the binary map (see Figure 2(b) and 2(c)) that could be assessed as eggs on the binary map. Nevertheless, a yellow brownish area often presents around the regions of debris (see Figure 2(a)) that can be used to detect debris. For extracting the brownish area near the debris, a chroma value for each pixel is defined as:

$$C_i = \max(R_i, G_i, B_i) - \min(R_i, G_i, B_i). \quad (9)$$

In this step, the objects that have at least X pixels with $C > C_E$ in their radii r are considered as debris. Parameter C_E is 0.15 by default, but the application allows the user to tune it, resulting in a change of the detection sensitivity. Because eggs have a dark color and the paper is white, the rate of true negatives (considering non-debris areas as debris) is negligible and it only happens for the eggs that are inside the yellow brownish area.

Egg Count and Noise Removal

The number of the eggs N inside the object i , is estimated as:

$$N(i) = \begin{cases} \left\| \frac{A(i)}{S} \right\|, & A(i) \leq 2 \times S \\ \left\| \frac{A(i) \times C}{S} \right\|, & \text{otherwise,} \end{cases} \quad (10)$$

where $A(i)$ is the area of the object, S is the estimated size of one egg, $\|\cdot\|$ is the round function and C is the accumulative ratio which should be less than one. The accumulative ratio is necessary due to the fact that regions in the intersection of the eggs inside a pile are shadowed by the eggs and are usually considered as a connected object in the binary map. Therefore, multiplying by this ratio allows better estimation of the number of eggs.

It should be mentioned that thresholding may produce noise, especially in the grid lines of the paper. There are many methods for noise reduction such as low-pass filters and other smoothing operators. However, these methods highly depend on the size of the filter. Here components

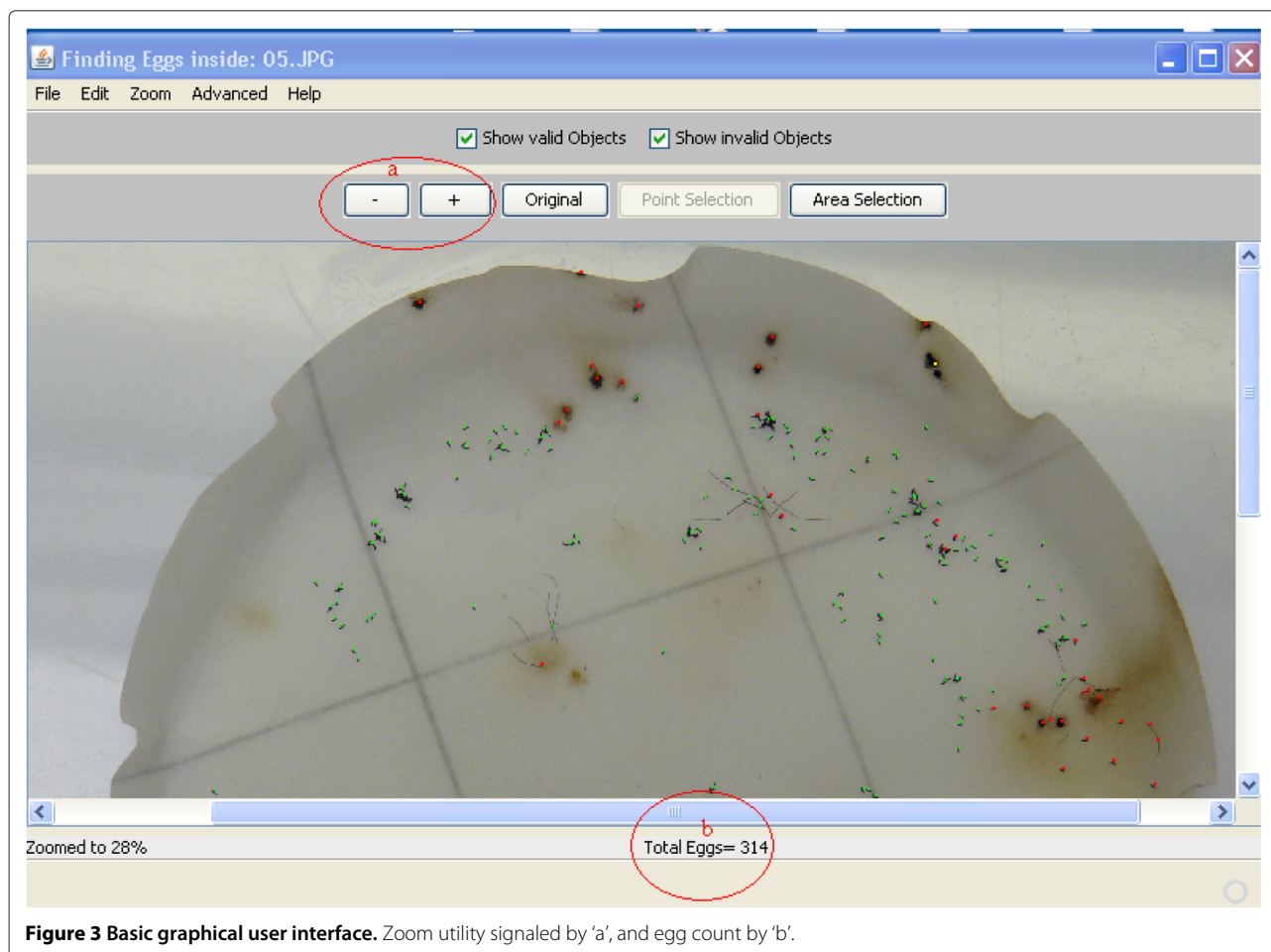


Figure 3 Basic graphical user interface. Zoom utility signaled by 'a', and egg count by 'b'.

smaller than half of the estimated size of one egg, are considered as noise in the Equation (10), and are removed.

Software

The algorithm explained above, has been implemented in Java as open source software. After the user opens an image, the software automatically computes the threshold value, detects and removes areas of debris, estimates the number of eggs inside each pile of the eggs and removes the noise. After that, the user is able to remove, add, and edit the automatically detected features by means of a user-friendly graphical interface. Figure 3 shows the basic graphical user interface of the software. The user can zoom, select single and/or multiple objects, modify their properties etc. and after each modification the total number of eggs is recalculated.

Figure 4 shows advanced options of the software, which allows the user to change the sensitivity of the thresholding as well as the sensitivity of the debris detection process. Finally, the user can save the results as an image indicating the number of eggs beside each object as well as

the total number of eggs. Figure 2(d) shows a sample output of the software, and Figure 2(e) shows the result after a small manually modification. The application estimated 103 eggs and, after manual modification, it showed 92 eggs. Corrections are mainly required on the debris areas without enough colorful pixels beside them, and eggs that fall in the neighborhood of debris areas.

Results and Discussion

The software was tested over 16 randomly chosen images from 2 different experiments. Table 1 shows the number of the eggs estimated by the software; the result after manually correction; the ground truth; the time that the application took in seconds; and the average time for manually counting in minutes.

As it is shown in the error rate column, the precision of the software after a first correction is on average more than 98%, whereas the time saved is enormous. For image number 3, the automatic processing was very poor and the user had to manually set the sensitivity parameters. It should be mentioned that a proper sensitivity can be easily

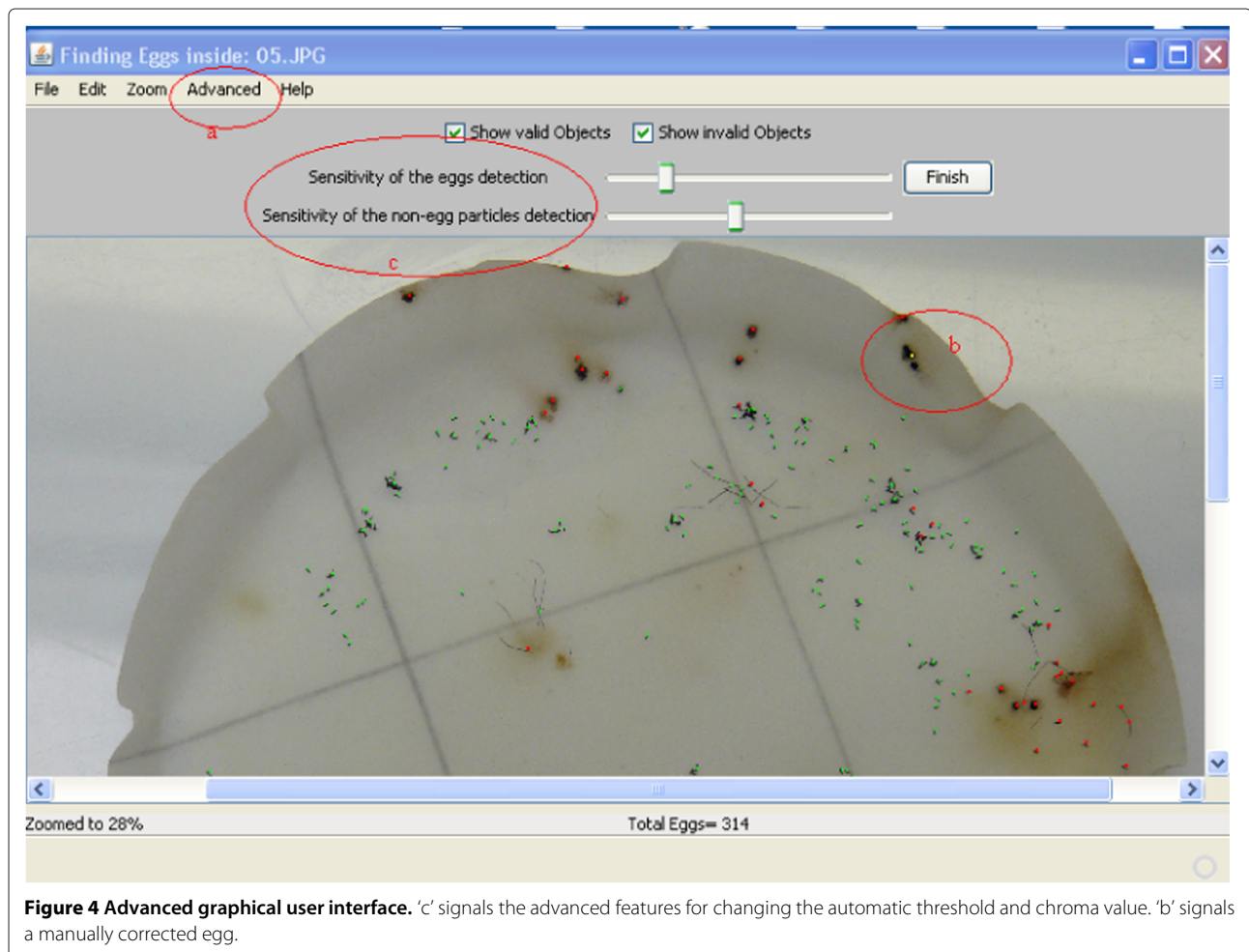


Figure 4 Advanced graphical user interface. 'c' signals the advanced features for changing the automatic threshold and chroma value. 'b' signals a manually corrected egg.

Table 1 Results of 16 different images

Image Ref.	Ground Truth/ MINUTES	Auto./ Sens.	Mouse Clicks	Output/ SECONDS	Missed Eggs
01	702 / 29	707	4	711 / 9	1%
02	342 / 20	320	8	366 / 18	7%
03	608 / 40 [#]	399 / 620	1 ^{1*}	620 / 35	2%
04	391 / 21	277 / 400	1 ^{2*}	400 / 35	2%
05	372 / 21	314 / 363	0 ^{3*}	363 / 25	2%
06	219 / 20	212	0	219 / 18	0%
07	460 / 27	478	3	455 / 20	1%
08	086 / 15	102	2	89 / 18	3%
09	114 / 20	118	1	119 / 18	4%
10	280 / 21	300	5	272 / 20	2%
11	352 / 25	342	5	360 / 20	2%
12	480 / 25	701	2	489 / 20	2%
13	022 / 06	23	1	22 / 15	0%
14	297 / 20	267	19	297 / 115	0%
15	331 / 21	358	9	331 / 110	0%
16	311 / 20	302	9	311 / 110	0%

[#]Automatic sensitivity failed and the software needed to be restarted.

*Results after correction of sensitivity.

Column "Auto. / Sens." presents both the automatically detected eggs using the default parameters and after adjusting the sensitivity parameter.

found by just adjusting a sliding bar. Manually counting all eggs of an image containing more than 500 eggs can take up to 30 minutes but, the same image, can be processed by Egg-Counter v1.0 in only a few seconds.

The results show that the proposed automatic method produces results that are close to the ground truth, and by making a few adjustments, mainly in the regions of debris and the paper's grid lines, these results get even closer to the ground truth. Multiplying the time gained by the number of images and experiments, results in economizing an extremely large amount of time. The sensitivity value of the test results for assessing the eggs is around 0.945 in the fully automatic use of the software and is higher after a few mouse clicks. The specificity value, in this case, makes no sense since the true negatives are not actually known. Elimination of thousands of noise pixels during different stages of the analysis does not allow a reliable calculation of the specificity of the software. Positive predictive value of the test is set around 0.921 for the full automatic version.

The proposed algorithm works well, if eggs are clearly darker than the background paper, even if they are brown or another dark color. To introduce better and higher contrast and a wider color difference between the paper and laid eggs, we suggest using white or semi-white paper. In addition, it is highly recommended to take images with a camera of at least 5M pixels, using the lowest ISO and

maximum shutter speed and avoiding re-sizing the images afterwards. Depending on your Laboratory lightning conditions, you might need to use a flash.

Conclusion

In this article, a promising new software package for automatically counting Anopheles eggs was presented. A very intuitive graphical user interface is available, that allows correction of the detection results, if needed. Additionally, in the parameters section of the interface it is possible to control the sensitivity to egg detection. Nevertheless, the proposed approaches involved in the processing of such images demonstrated a very high level of robustness, as it was shown by the results. The adoption of the proposed software package will save many hours of labor for the bench scientist.

Competing interests

The authors declare that they have no competing interests.

Author's contributions

Ali Mollahosseini, António dos Anjos and Hamid Reza Shahbazkia contributed with the proposed methods and software and Marie Rossignol, Cédric Pennetier, Anna Cohuet and Fabrice Chandre for testing and providing the necessary material. All authors read and approved the final version of the manuscript.

Acknowledgements

We would like to acknowledge IRD MIVEGEC Montpellier and DEEI UALG for having provided the necessary backup. We would like to thank Prof. Chris Arme, the editor of Parasites & Vectors, and the anonymous reviewers for their insightful and constructive comments.

Author details

¹Departamento de Engenharia Eletrónica e Informática, Universidade do Algarve, 8008-139 Faro, Portugal. ²Institut de Recherche pour le Développement, UMR MIVEGEC (UM1-UM2-CNRS 5290-IRD 224), 911 avenue Agropolis, B.P. 64501, 34394 Montpellier Cedex 5, France. ³Institut de Recherche pour le Développement, UMR MIVEGEC (UM1-UM2-CNRS 5290-IRD 224), Cotonou, Benin. ⁴Centre de Recherche Entomologique de Cotonou, Ministry of Health, Cotonou, Benin. ⁵Departamento de Ciências e Tecnologias, ISMAT - Instituto Superior Manuel Teixeira Gomes, 8500-508 Portimão, Portugal.

Received: 14 March 2012 Accepted: 10 May 2012

Published: 19 June 2012

References

1. Ferguson HM, Dornhaus A, Beeche A, Borgemeister C, Gottlieb M, Mulla MS, Gimnig JE, Fish D, Killeen GF: **Ecology: A prerequisite for malaria elimination and eradication.** *PLoS Med* 2010, **7**(8):e1000303.
2. Yaro AS, Dao A, Adamou A, Crawford JE, Traoré SF, Touré AM, Gwadz R, Lehmann T: **Reproductive output of female Anopheles gambiae (Diptera: Culicidae): comparison of molecular forms.** *J Med Entomol* 2006, **43**(5):833–839.
3. Sharma A, Parasher H, Singh OP, Adak T: **Species B of Anopheles culicifacies (Diptera: Culicidae) is reproductively less fit than species A and C of the complex.** *Acta Tropica* 2009, **112**(3):316–319.
4. Hogg JC, Thomson MC, Hurd H: **Comparative fecundity and associated factors for two sibling species of the Anopheles gambiae complex occurring sympatrically in The Gambia.** *Med Vet Entomol* 1996, **10**(4):385–391.
5. Manda H, Gouagna LC, Foster WA, Jackson RR, Beier JC, Githure JI, Hassanali A: **Effect of discriminative plant-sugar feeding on the survival and fecundity of Anopheles gambiae.** *Malaria Journal* 2007, **6**:113–124.

6. Gary RE, Foster WA: **Effects of available sugar on the reproductive fitness and vectorial capacity of the malaria vector *Anopheles gambiae* (Diptera: Culicidae).** *J Med Entomol* 2001, **38**:22–28.
7. Pfähler O, Oulo DO, Gouagna LC, Githure J, Guerin PM: **Influence of soil quality in the larval habitat on development of *Anopheles gambiae* Giles.** *J Vector Ecol* 2006, **31**(2):400–405.
8. Yaro AS, Touré AM, Guindo A, Coulibaly MB, Dao A, Diallo M, Traoré SF: **Reproductive success in *Anopheles arabiensis* and the M and S molecular forms of *Anopheles gambiae*: Do natural sporozoite infection and body size matter?** *Acta Tropica* 2012, **122**:87–93.
9. Hogg JC, Hurd H: **The effects of natural *Plasmodium falciparum* infection on the fecundity and mortality of *Anopheles gambiae* s. l. in north east Tanzania.** *Parasitology* 1997, **114**(Pt4):325–331.
10. Hogg JC, Hurd H: **Malaria-induced reduction of fecundity during the first gonotrophic cycle of *Anopheles stephensi* mosquitoes.** *Med Vet Entomol* 1995, **9**(2):176–180.
11. Ferguson HM, Read AF: **Why is the effect of malaria parasites on mosquito survival still unresolved?** *Trends in Parasitology* 2002, **18**(6):256–261.
12. Ahmed AM, Hurd H: **Immune stimulation and malaria infection impose reproductive costs in *Anopheles gambiae* via follicular apoptosis.** *Microbes and Infection* 2006, **8**(2):308–315.
13. Lyimo IN, Keegan SP, Ranford-Cartwright LC, Ferguson HM: **The impact of uniform and mixed species blood meals on the fitness of the mosquito vector *Anopheles gambiae* s.s: does a specialist pay for diversifying its host species diet?** *Journal of Evolutionary Biology* 2012, **25**(3):452–460.
14. Mosqueira B, Duchon S, Chandre F, Hougard JM, Carnevale P, Mas-Coma S: **Efficacy of an insecticide paint against insecticide-susceptible and resistant mosquitoes - part 1: laboratory evaluation.** *Malaria Journal* 2010, **9**:340–346.
15. Dhadialla TS, Carlson GR, Le DP: **New insecticides with ecdysteroidal and juvenile hormone activity.** *Annu Rev Entomol* 1998, **43**:545–569.
16. Okoye PN, Brooke BD, Hunt RH, Coetzee M: **Relative developmental and reproductive fitness associated with pyrethroid resistance in the major southern African malaria vector, *Anopheles funestus*.** *Bulletin of Entomological Research* 2007, **97**(6):599–605.
17. Djogbénou L, Labbé P, Chandre F, Pasteur N, Weill M: **Ace-1 duplication in *Anopheles gambiae*: a challenge for malaria control.** *Malaria Journal* 2009, **8**:70–76.
18. Li C, Marrelli MT, Yan G, Jacobs-Lorena M: **Fitness of transgenic *Anopheles stephensi* mosquitoes expressing the SM1 peptide under the control of a vitellogenin promoter.** *J Hered* 2008, **99**(3):275–282.
19. Lambrechts L, Koella JC, Boëte C: **Can transgenic mosquitoes afford the fitness cost?.** *Trends in Parasitology* 2008, **24**:4–7.
20. Munhenga G, Brooke BD, Chirwa TF, Hunt RH, Coetzee M, Govender D, Koekemoer LL: **Evaluating the potential of the sterile insect technique for malaria control: relative fitness and mating compatibility between laboratory colonized and a wild population of *Anopheles arabiensis* from the Kruger National Park, South Africa.** *Parasites & Vectors* 2011, **4**:208–11.
21. Kweka EJ, Owino EA, Mwang'onde BJ, Mahande AM, Nyindo M, Moshia F: **The role of cow urine in the oviposition site preference of culicine and *Anopheles* mosquitoes.** *Parasites & Vectors* 2011, **4**:184–190.
22. Yen JC, Chang FJ, Chang S: **A new criterion for automatic multilevel thresholding.** *Image Processing, IEEE Transactions on* 1995, **4**(3):370–378.
23. González R, Woods R. Boston, MA, USA: Addison-Wesley Longman Publishing Co., Inc.; 2001.
24. Burger W, Burge MJ: *Digital Image Processing: an algorithmic introduction using Java.* New York: Springer; 2008.

doi:10.1186/1756-3305-5-122

Cite this article as: Mollahosseini *et al.*: A user-friendly software to easily count *Anopheles* egg batches. *Parasites & Vectors* 2012 **5**:122.

Submit your next manuscript to BioMed Central and take full advantage of:

- Convenient online submission
- Thorough peer review
- No space constraints or color figure charges
- Immediate publication on acceptance
- Inclusion in PubMed, CAS, Scopus and Google Scholar
- Research which is freely available for redistribution

Submit your manuscript at
www.biomedcentral.com/submit

