

Aberystwyth University

Managing forests for global and local ecosystem services:

Kim, Yeon-Su; Latifah, Sitti; Afifi, Mansur; Mulligan, Mark; Burk, Sophia; Fisher, Larry; Siwicka, Ewa; Remoundou, Kyriaki; Christie, Michael; Masek Lopez, Sharon; Jenness, Jeff

Published in:
Ecosystem Services

DOI:
[10.1016/j.ecoser.2018.03.018](https://doi.org/10.1016/j.ecoser.2018.03.018)

Publication date:
2018

Citation for published version (APA):

Kim, Y-S., Latifah, S., Afifi, M., Mulligan, M., Burk, S., Fisher, L., Siwicka, E., Remoundou, K., Christie, M., Masek Lopez, S., & Jenness, J. (2018). Managing forests for global and local ecosystem services: A case study of carbon, water and livelihoods from eastern Indonesia. *Ecosystem Services*, 31(Part A), 153-168.
<https://doi.org/10.1016/j.ecoser.2018.03.018>

Document License CC BY-NC-ND

General rights

Copyright and moral rights for the publications made accessible in the Aberystwyth Research Portal (the Institutional Repository) are retained by the authors and/or other copyright owners and it is a condition of accessing publications that users recognise and abide by the legal requirements associated with these rights.

- Users may download and print one copy of any publication from the Aberystwyth Research Portal for the purpose of private study or research.
- You may not further distribute the material or use it for any profit-making activity or commercial gain
- You may freely distribute the URL identifying the publication in the Aberystwyth Research Portal

Take down policy

If you believe that this document breaches copyright please contact us providing details, and we will remove access to the work immediately and investigate your claim.

tel: +44 1970 62 2400
email: is@aber.ac.uk

1
2
3 Full title: Managing forests for global and local ecosystem services: A case study from
4 eastern Indonesia
5
6

7
8 **Abstract**

9
10 Despite a recent explosion of interest in global payment for ecosystem services (PES)
11 mechanisms, there has been little comprehensive assessment of PES impacts on ecosystem
12 services (ESs) at smaller scales. Better understanding of localized impacts of global PES can
13 help balance ES deliveries for global benefits with those for meeting landscape and local
14 level needs. Using a case study from eastern Indonesia, we assessed trade-offs and
15 potential synergies between global PES (e.g. REDD+ for forest carbon) and landscape level
16 ESs (e.g., water quantity, quality, regulation) and local ESs (e.g. forest products for food,
17 energy, livelihood). Realistic land use change scenarios and potential carbon credits were
18 estimated based on historical land use changes and in-depth interviews with stakeholders,
19 We applied a process-based hydrologic model to estimate changes in watershed services
20 due to land use changes. Finally, local community forest uses were surveyed to understand
21 locally realized ESs. The results show empirical evidence that, without careful
22 consideration of local impacts, a PES mechanism to protect global ESs can have negative
23 consequences for local ecosystem services. We present management alternatives designed
24 to maximize positive synergies between different ESs at varying scales.
25
26
27
28
29

30 **Keywords:** ecosystem services; carbon; REDD+; watershed services; livelihoods; Indonesia,
31
32
33
34
35
36
37
38
39
40
41
42
43
44
45
46
47
48
49
50
51
52
53
54
55
56

1 Introduction

Globally, tropical forests account for approximately 25% of all terrestrial carbon (Bonan, 2008). Deforestation is the largest source of carbon emissions from tropical developing countries (Pan et al. 2011). The 2015 UN climate change conference in Paris reconfirmed the importance of forests in global climate regulation. The agreement explicitly included the REDD+ mechanism¹ as part of the global climate regime, where tropical and sub-tropical countries could receive both public and private funding for reducing carbon emissions and conserving standing forests. Indonesia has the third largest tropical forest in the world, with one of the world's fastest rates of deforestation at more than 1,000 km² of forests (476 km² of primary forest) lost per year between 2000-2012 (Hansen et al., 2013; Margono et al., 2014). Indonesia has emerged as the major beneficiary of global negotiations to mitigate climate change through improved forest management (Simula, 2010). It has received the largest portion of REDD+ readiness commitments from the public sector (\$757 million out of \$2.8 billion total committed and dispersed from 2009 to 2014; Goldstein et al., 2015). In the private sector, carbon credits from protecting Indonesia's forests was 5.5% of all voluntary carbon transactions in 2015 (Hamrick and Goldstein, 2016).

Offering financial incentives for tropical developing countries to reduce deforestation and forest degradation can be a win-win-win solution for climate mitigation, ecosystem conservation and poverty alleviation (Pistorius, 2012). However, many previous studies have warned that international intervention in the form of Payments for Ecosystem Services (PES) can exacerbate internal social problems (Blom et al., 2010; Wunder, 2008). Failure to include consideration for local uses of resources in global PES design can undermine rights of indigenous and local communities, exacerbate food and water insecurity (UN-REDD programme, 2017; Fazey et al, 2010), diminish ecological integrity and equity (Motel et al., 2009), and result in less than optimal outcomes for the ecosystem service targeted (Enrici and Hubacek, 2016; Skutsch et al. 2011). Despite a recent explosion of interest in global PES mechanisms, there has been little comprehensive assessment of their impacts on localized ecosystem services (ES) and livelihoods. Better understanding of the localized impacts is needed to find ways of balancing ES that provide benefit at the global scale, while meeting local needs for water, food, energy and livelihoods. Using a case

¹ Reducing Emissions from Deforestation and Forest Degradation (REDD+) is an effort to offer financial incentives for developing countries to reduce emissions from forested lands. REDD+ projects include activities for (a) reducing emissions from deforestation, (b) reducing emissions from forest degradation, (c) while recognizing the role of conservation of forest carbon stocks, (d), sustainable management of forests, and (e) enhancement of forest carbon stocks (UN-REDD programme, 2017).

113
114
115 study from eastern Indonesia, we present a detailed assessment of trade-offs and potential
116 synergies among global ESs (forest carbon), landscape-level regulating services (e.g. water)
117 and localized provisioning services (e.g., forest products for food and energy). Specific
118 research questions are: 1) what are realistic land management scenarios to recover forest
119 area lost and improve forest conditions s?; 2) how do these scenarios affect global,
120 landscape and local ES provisions?; 3) how do global modelling results compare with local
121 perception in assessments of ecosystem service change; 4) what are the management
122 alternatives to maximize positive synergies among provisions of different ESs at varying
123 scales?
124
125
126

127 2 Literature review: Ecosystem Services trade-offs and synergies

128
129
130 The Millennium Ecosystem Assessment (MA 2005) placed the term “ecosystem services”
131 firmly in the policy agenda (MA 2005; Gómez-Baggethun et al., 2010). Since then, many
132 have advocated the urgent need to incorporate sustainable provisioning of ES into policies
133 and planning for managing landscapes (e.g., Daily et al. 2009). However, the flow of ES that
134 ecosystem functions and processes provide is unevenly distributed spatially, temporally
135 and societally, which makes it challenging to translate this into quantifiable measures (de
136 Groot et al., 2010; Rodriguez et al., 2006). In addition, spatially distributed beneficiaries of
137 different ES vary also in their social and economic status, which affect their ability to
138 influence decision-making process (TEEB 2010). Mouchet et al. (2014) advanced a
139 typology to understand ES trade-offs by merging ecological and socio-economic
140 considerations (Figure 1).
141
142
143

144 *Figure 1*

145
146 Despite recent advances in our understanding of ES and their associations, there have been
147 few studies that addressed the spatial scale of managing ES (e.g., Hein et al., 2006;
148 Willemsen et al., 2012 – both in the Netherlands). With the growing significance of global
149 carbon governance (Bierman, 2010), there is a critical need to understand how the
150 economic and political scale of decision-making affects ES at different scales. We chose
151 three groups of ES at global, landscape (watershed level) and local community scales to
152 contribute to our current understanding about ES associations and potential effects of
153 global PES schemes.
154
155
156

157 3 Methods

158 3.1 Study area

159
160 The case study area is Lombok island in Nusa Tenggara Barat (NTB) province, located in
161 eastern Indonesia (Figure 2). According to a recent analysis of Landsat images, the forested
162 area of Lombok decreased 28.6% from 1990 to 2010 (Bae et al., 2014). By comparison,
163
164
165
166
167
168

169
170
171
172
173
174
175
176
177
178
179
180
181
182
183
184
185
186
187
188
189
190
191
192
193
194
195
196
197
198
199
200
201
202
203
204
205
206
207
208
209
210
211
212
213
214
215
216
217
218
219
220
221
222
223
224

Indonesia's national average forest loss is 20.3% during the same period (FAO, 2010). Lombok is also one of the most densely populated and impoverished areas in Indonesia. Seventy percent of the population of NTB province lives in Lombok, although the island only constitutes a quarter of the total land area of the province (708 persons/km², compared to 237 persons/km² for NTB and 132 persons/km² nationally, as of 2014, BPS-NTB, 2015). Economic opportunities are limited to agriculture (24% of Gross Domestic Product (GDP) and 43% of employment of the province) and the mining and quarrying sector (15% of GDP and 1.8% employment) (as of 2014, BPS-NTB, 2015). NTB is among the poorest provinces of Indonesia, based on the Human Development Index (HDI), a metric that combines average life expectancy, education level, and *per capita* income (65.19 compared to the national average 69.55 as of 2015, BPS, 2016).

Figure 2

Although forestry is a relatively small contributor to the wider economy of NTB (0.1% of GDP as of 2014, BPS-NTB, 2015), the forests in the northern part of the island, surrounding the Rinjani volcano complex, are an important source of subsistence and income to local communities. The forest also represents an important watershed, providing municipal water for the city of Mataram and irrigation for the major rice production regions throughout Lombok Island. The development of a program of payment for watershed services between municipal rate-payers and forest margin communities is one of the very first examples of PES systems in Indonesia (Pirard 2012; Prasetyo *et al.*, 2009). The program supports forestry or agroforestry projects proposed by community groups with funds collected from the downstream city's water use fees. A multi-stakeholder group (IMP, *Institusi Multi-Pihak*) consisting of representatives from the World Wildlife Fund, the district forest service, a local university, a mineral water company, the district government and Mount Rinjani National Park, selects and distributes funds for selected projects (Schweizer *et al.* 2016; Pirard, 2012).

3.2 Research approach

To assess the potential impacts of different land use change scenarios on ES at different scales, we first identified alternative forest management scenarios that can be adopted by a future carbon PES scheme in Lombok. We then assessed the carbon, water and locally important services for food, energy and livelihood impacts of these PES scenarios.

3.2.1 Forest management scenarios

Forest carbon projects are designed to provide incentives to protect forests for the value of their standing carbon. Estimating carbon credits is essential for establishing the economic

225
226
227 value of forest carbon projects. It includes two components: land-use and land-cover
228 changes and the associated changes in carbon stock (VCS, 2012).
229

230 Future forest management scenarios were developed based on analysis of historical
231 changes in land-use and land-cover, along with analysis of drivers of deforestation and
232 forest degradation in the area. Detail of these changes have been reported in Bae et al.,
233 2014 and Kim et al., 2016. Table shows the changes in deforestation patterns in three 5-
234 year periods (1995-2000; 2000-2005; 2005-2010). Land use classes² following
235 deforestation were projected based on the satellite imagery footprint of the most recent
236 historical land cover pattern (2005-2010). We focus on the area around the Rinjani volcano
237 complex, where the majority of Lombok's remaining forests are located.
238
239
240

241 *Table 1*

242 The Suharto regime fell in 1998. This socio-political shift caused an abrupt interruption of
243 central government control of forest lands that encouraged massive forest encroachment
244 that was common throughout Indonesia at the time (e.g., Resosudarmo, 2004). Figure 3
245 graphically illustrates the deforestation patterns during the three 5-year periods studied.
246 Between 1995 and 2000, land use changes were driven by conversion of primary and
247 secondary forests to shrubland, indicating no immediate cultivation after clearing of forest
248 lands. After 2000, deforestation of primary forests decreased and some shrubland
249 transitioned back to secondary forest. However, deforestation of secondary forest
250 continued and secondary forest and shrubland are now being cultivated for dryland
251 agriculture.
252
253
254

255 *Figure 3*

256
257 In addition to examining the historical patterns of land use changes, we conducted a series
258 of in-depth interviews (January 2015) with key informants from provincial and local
259 government forest agencies, as well as international and local NGOs, to better understand
260 the varied contexts of forest management. Based on this information, we develop three
261 land-use change scenarios that represent a range of possible reforestation and restoration
262 outcomes. These scenarios are reported in Section 4.1.
263
264
265
266
267
268
269

270 ² Primary forest in this study is defined as mature or intact forest, where standing stock has reached stability.
271 The forest is generally of native tree species, there are no clear indications of human activities, and the
272 ecological processes are not significantly disturbed. Secondary forest is regenerated forest that has been
273 disturbed by human activities or natural disasters. Secondary forest may include a natural forest with timber
274 extraction, retaining artificial gaps in the canopy to 50-60%. This kind of forest includes agroforestry and
275 community forests. Shrubland refers to land with woody vegetation where the dominant woody elements are
276 shrubs, bushes and young generation trees, generally less than 5m in height. The latter appears usually after
277 forest clear-cutting activities without crop cultivation. (Source: Bae et al. 2014).
278
279
280

281
282
283 3.2.2 Carbon assessment
284

285 To estimate the impacts of the projected future land use changes on carbon stocks, we used
286 the area-weighted average of carbon stock for each carbon pool for forest and shrubland,
287 based on field inventory (Table 1, Source: Bae et al. 2014). The estimated changes of carbon
288 stock are based only on land use class change in each scenario and do not incorporate other
289 variations within land use classes. For all other land uses, the carbon stocks were assumed
290 to retain the level of soil carbon in shrubland³.
291
292

293 *Table 1*

294
295 3.2.3 Hydrological modelling
296

297 We utilized a process-based hydrologic model, WaterWorld, to project the hydrological
298 impacts of the three land-use change scenarios. WaterWorld (version 3) is a spatially
299 explicit, globally applicable model for calculating monthly water balance, runoff, water
300 quality (including agricultural pollutants and soil erosion) and their spatial distributions
301 under baseline and alternative land use change scenarios (Mulligan, 2013). The
302 WaterWorld uses globally available data sets from remote sensing, along with limited *in*
303 *situ* precipitation data to reveal how forest restoration can affect water provisioning and
304 regulating services (Mulligan 2013). WaterWorld calculates water balance as a sum of wind
305 driven rainfall, fog and snowmelt (not applicable in this case) minus actual
306 evapotranspiration. Water infiltrates according to regional infiltration capacities (Gleeson
307 et al., 2011), mediated by slope gradient and tree cover (lower gradient and greater tree
308 cover lead to higher infiltration rates within the geology-controlled regional limits).
309 Infiltration is calculated based on global permeability data using lithology developed by
310 Gleeson et al. (2011). The infiltration model takes the mean soil-conditioned hydraulic
311 conductivity as the infiltration rate and increases it towards one standard deviation higher
312 than the mean in each pixel as tree cover increases and slope decreases. Higher tree cover
313 encourages infiltration, shallower slopes provide greater opportunity for it to occur.
314 Infiltration is also limited by available porosity and declines in a linear fashion as the soil
315 store fills. Infiltrated water joins subsurface base flow and travels much more slowly to
316 streams than water running over the land surface. Tree cover also increases the rate of
317 evapotranspiration and the rate of interception of fog, where it occurs.
318
319
320
321
322

323 The model was applied to the current conditions in Lombok to produce information on the
324 current hydrological ESs and also model their changes under different land use change
325 scenarios. Evaluating watershed services is challenging because hydrological impacts can
326

327
328
329 ³ For carbon stock change, Verified Carbon Standard (VCS) guidelines state that the REDD+-related projects
330 should account for the following carbon pools: above-ground living biomass of trees and non-trees, and wood
331 products if harvested timbers are utilized to make long-lived wood products. Measuring and monitoring
332 other carbon pools, such as living below-ground biomass and dead organic matter, are optional or not
333 required.
334
335
336

337
338
339 occur anywhere downstream of the site of service production (van Noordwijk et al. 2016).
340 It is not easy to discern the roles of land use change from other influencing factors, such as
341 climate variability, landscape-level changes, and spatial distribution of soil and vegetation
342 types (Bruijnzeel, 2004). For that reason, we also assessed local perception of watershed
343 services linked with forest conditions through focus group discussions (FGD) and survey.
344
345

346 3.2.4 Locally important ecosystem services for food, energy and livelihoods 347

348 To understand how local community members utilize and benefit from forest ecosystem
349 services, in-person surveys were conducted at four locations (Figure 4). Survey locations
350 were selected based on their proximity to forests with different designated functions,
351 forest governance status, and permitted activities.
352

353 State forests in Indonesia are classified into three designated functional categories (ROI,
354 1999)⁴: 'Production Forest' for providing forest products; 'Protection Forest' for ecosystem
355 protection, such as watershed and soil conservation; and 'Conservation Forest' for
356 protecting biodiversity and ecosystem conservation. Production and Protection Forests in
357 NTB province are managed by Forest Management Units (*Kesatuan Pengelolaan Hutan*, or
358 KPH that were created by the central government but are more or less decentralized (See
359 Kim et al., 2016 and Sahide et al., 2016 for more complete information on the Forest
360 Management Units). Conservation Forest is directly managed by the national park
361 Conservation Forest is directly managed by the National Park (i.e. Conservation Forest
362 Management Unit) under the central government authority. We selected one community
363 adjacent to Production Forest (A), one near Protection Forest (B), and one near
364 Conservation Forest (C), i.e., near the Rinjani National Park (Figure 4). We also included an
365 additional community near a Protection Forest that recently gained official recognition as
366 "Community Forest" (*Hutan Kemasyarakatan*, or HKm) (D). Community Forest is one of the
367 legal mechanisms that communities can use to gain recognition for their usufruct rights
368 (ROI, 2007). However, the legal process of establishing HKm is complicated, involving both
369 local and central government agencies, and it can take years to gain formal approval
370 (Intarini et al., 2015), which explains why less than 1% of Indonesia's forests are managed
371 by communities with HKm status (Stevens et al. 2014). This particular community gained
372 HKm status through intense facilitation supported by an international NGO (Flora and
373 Fauna International) that initiated a REDD+ demonstration project in the area.
374
375
376
377
378
379

380 *Figure 4*
381
382
383
384
385

386 ⁴ Indonesian Law Number 41/1999 distinguishes "forest" as an ecosystem dominated by trees and "forest
387 area" defined as a particular area designated by the government. Thus, these administrative designations may
388 not necessarily represent actual forest cover and particular forest conditions (Bae et al. 2014).
389
390
391
392

393
394
395 The various forest designations offer alternative levels of forest protection. As such, they
396 differ in terms of the activities that local people are permitted to undertake in the forest.
397 Table 3 provides a summary of permitted activities by forest designation.
398

399 *Table 2*
400

401 We conducted surveys across locations A, B, C, and D (January 2015) to assess the
402 importance people attach to local forest ESs across the four locations. A list of locally
403 important forest ESs was drawn up following scoping focus group discussions with
404 community members and local stakeholders. These services were then grouped into three
405 groups of provisioning services and one regulating service:
406
407

- 408 • Naturally occurring non-timber forest products (NTFP), such as bamboo, honey and
409 cattle feed;
- 410 • Planted non-timber forest products, such as various fruits and cash crops (e.g.,
411 coffee and cacao);
- 412 • Timber forest products, including fuelwood; and
- 413 • Water regulation services.
414
415

416
417 Although cultural services of forests were also identified to be significant to these forest
418 margin communities, it is difficult to measure those services and link them to forest
419 conditions, and thus they were not explicitly investigated in our study.
420

421 The survey questionnaire comprised five sections. First, we collected background
422 information on the respondents, including their proximity to the forest. Next, we asked a
423 general question on the extent to which the services they obtain from the forest sustains
424 their needs and how this has changed over the past 5 years. The third and fourth sections
425 respectively collected detailed information on the levels of consumption of provisioning
426 and regulating services. Finally, we collected information on respondent's preferences for
427 alternative future forest management options. The surveys were administered in-person
428 by (trained) local enumerators, who conducted the surveys in the respondent's home in the
429 local language. A sampling frame was developed for identifying respondents following
430 consultation of community leaders and aimed to obtain a representative sample of
431 community members.
432
433

434
435 Survey data was analyzed separately for the four locations. After analyzing the data, we
436 held a workshop with community members in each location to share our findings, elicit
437 feedback on our preliminary results, and explore possible future options to more
438 effectively manage the forests (March 2016).
439
440
441
442
443
444
445
446
447
448

4 Results

4.1 Land use change scenarios

Three future (30 year projection) land use change scenarios were developed based on spatial data on recent land use changes (2005-2010), combined with current forest management plans obtained from key informant interviews (January 2015). The scenarios included a Business-As-Usual scenario and two management scenarios aimed at improving forest condition.

4.1.1 Business-As-Usual (BAU) scenario

There has been little decrease of primary forests in the study area since 2000, although secondary forest and shrubland have changed to other land uses, primarily dryland agriculture. Under this scenario, these current trends in land use change would continue unabated, resulting in ~10% of currently forested land being converted to dryland agriculture. We used the latest available land-use data (2010) as the starting point for our simulations. The projected land use changes for the next 10 and 30 years are shown in Table 3.

Table 3

4.1.2 Community Partnership (CP) scenario

Forest Management Units (KPHs) in Lombok currently use a spatial planning approach, in which the remaining primary forests are defined as core protected zones, and surrounding secondary forests are designated for community use. The agencies are developing programs to assure *de facto* usufruct rights for communities and allow agroforestry development through partnership agreements (*kemitraan*) in the secondary forest (Jang and Bae, 2014). The optimistic, yet realistic, scenario would be that this program will succeed at buffering encroachment into the primary forest, and the partnership agreements will expand to all forests around Mount Rinjani managed by KPHs. The resulting land use changes would increase the area of secondary forests to the 1995 level (i.e. before the period of rapid deforestation) with 50% of forest restoration occurring in the first 10 years. In this scenario, secondary forests would include well-managed agroforestry areas with dense forest cover converted from shrubland (32% increase of total forests in 30 years), while the area of primary forests would remain unchanged (Table 4).

Table 4

4.1.3. Forest Restoration (FR) scenario

This scenario presents the realistic upper limit of a reforestation scenario. It would require an intervention, for example a REDD+-type carbon project, that would lead to restoring all Lombok's forests to the 1995 levels with 50% of forest restoration occurring in the first 10 years. The resulting land use changes would include 7% increase of primary forest and 56% increase of total forest in 30 years (Table 5).

Table 5

4.2 Changes in carbon stock and potential carbon market values

Table 6 shows land use changes under two scenarios compared to the BAU scenario, as well as resulting total carbon stock changes. For example, secondary forests in Lombok, which contain an average of 181.1 metric tons of carbon per ha, are projected to increase by 24,060 ha in 10 years under CP scenario (from 65,462 ha under BAU to 89,522 ha under CP scenario). After combining changes in carbon stock with all land uses, total carbon stock under CP scenario would be a 4.0 million metric tCO₂e increase for the first 10-year period, and a 6.9 million metric tCO₂e over the thirty year project period. FR scenario will result in increase of 4.3 million metric tCO₂e from BAU scenario REL for first 10 years and 7.6 million metric tCO₂e over the 30 year project period.

Table 6

Carbon price (USD/ metric tCO₂e) in voluntary carbon market varies by sources, although it is generally higher for forest carbon. REDD+ projects for avoided planned deforestation (\$1.9) and avoided unplanned deforestation⁵ (\$5.5) generally resulted in forest carbon offsets whose values were lower than those from sustainable agriculture/agroforestry (\$7.4), tree planting (\$8.9) and improved forest management (\$9.8) projects (average prices per metric tCO₂e in 2014 from Goldstein et al., 2015). Even at the lower end of carbon price (\$5) and emission reduction, we can expect at least \$35 million of expected value generated for a 30-year forest carbon project in Lombok Table 7. However, this amount indicates the carbon credit potential, not necessarily the actual payments required to start a project.

Table 7

⁵ Carbon credits from REDD+ projects are based on different forms of avoided emission from planned (i.e. legally authorized and documented for conversion) and unplanned deforestation, as well as forest degradation (i.e. canopy cover remaining above the threshold for definition of forest and no change in land use).

4.3 Hydrological modelling results

WaterWorld model results predicted that CP and FR scenarios would result in decreased local annual water balance and runoff in most locations in Lombok due to increased evapotranspiration from tree cover. Figure 5 shows the changes in average surface water runoff and water balance under CP and FR scenarios (Figure 5). The differences between catchments reflect differences in the amount of tree cover change as well as the effects of varying fog frequency, rainfall totals and slope.

Figure 5

The WaterWorld metric for water quality is termed the human footprint on water quality (Mulligan, 2010; Mulligan, 2013) and indicates the impact of upstream land use on downstream water quality as a percent of water that fell as rain on human impacted land uses. Water quality was predicted to increase in the afforested areas because of reduced agricultural inputs, but reduced runoff through greater evapotranspiration can also translate to concentrated pollutants downstream from the remaining agricultural lands. Since most populations are at lower elevations (e.g. residents in the city of Mataram. For the location, see Figure 1) and most forest are at higher elevations, this can mean a minimal or negative effects from increasing forest cover on water quality to downstream beneficiaries. Moreover, although increased infiltration does lead to a greater fraction of water as subsurface flow, WaterWorld model shows the impact of reduced water balance is greater so dry season flows decrease as tree cover increases in this region. Overall, the water modeling showed no net benefits from recovering tree cover in terms of water supply and water quality downstream, except locally at a few remote very cloudy sites.

4.4 Local perceptions of forest ESs

To assess potential impacts of future land use change scenarios on provisioning services that sustain food, energy and livelihoods of local communities, we surveyed 408 individuals across the four forest locations. During the surveys, respondents were asked to report on their household's level of consumption of forest ESs obtained from the forest (NTFPs and timber products), and their perceived market values of these ecosystem services (Section 4.4.1). We also asked respondents to indicate what services they would like to see being enhanced in future forest management plans (Section 4.4.2).

4.4.1 Locally important provisioning services from forests

The majority (80%) of respondents reported that their household utilizes some forest ESs (Table 9). The community near the Protection forest (B) reported highest level of use (98% of respondents), followed by A near Production forest (86%), C near Conservation forest (81%), D Community forest (53%). Planted NTFP was utilized most widely (69%), while smaller portions of respondents reported utilization of Natural NTFP (49%) and

617
618
619 Timber (47%). The specific forest products utilized vary by locations: coffee (67%), banana
620 (56%) and fern (49%) were most popular in A community; jackfruit (86%) and banana
621 (82%) in the B community; fern (69%) and forage (58%) in C community; and coffee
622 (35%) and Jackfruit (34%) in D Community forest. Fuelwood collection was higher in A
623 near the Protection forest (79%), compared to other areas around where one-third of
624 respondents reported collection. These variations are due to differences in permitted
625 activities across different forest designations (See Table 3), as well as ease of access to
626 markets and other socio-economic variables. For example, a previous study showed that
627 domestic energy needs can be often met by deadwoods and branches collected in
628 household gardens and fuelwood extraction from forests is highly correlated with
629 opportunity to sell fuelwoods (Lee et al. 2015).
630
631

632
633 We also explored the economic value of the products collected from different locations. To
634 calculate these values, reported volumes collected were multiplied by reported prices.
635 When the price was missing but the respondent reported some level of extraction, the
636 mean price was used. To get a conservative estimate of the values and avoid outliers
637 skewing the data, we removed the top and bottom 10% of the value distribution. Average
638 overall values of forest ESs utilized per household per year were highest in the Production
639 forest (\$141), followed by Community forest (\$116), Protection Forest (\$85) and
640 Conservation forest (\$46).
641
642
643

644 Table 9 provides further detail of the distribution of values by ESs by location. Highest
645 values were found for Palm (\$918 for 6% of Community forest users), Coffee (\$262 for
646 67% of Production forest users and \$64 for 35% of Community forest) and Durian (\$81 for
647 13% of Community forest users and \$75 for 33% of Production forest users). Timber
648 products were largely restricted to fuelwood with relatively low value (\$4/household/yr).
649 Forest products most likely to be consumed by the household are: melinjo (94%), forage
650 (91%), jackfruit (88%), taro (83%) and fern (83%), while cacao (92%) and palm (83%)
651 were the products most likely to be sold. Our findings demonstrate that there was a
652 significant variability in terms of forest uses by communities.
653
654

655 *Table 8*

656 4.4.2 Perceived importance of forest ESs

657
658 We asked respondents to indicate which services they would like to see improved by future
659 forest management plans. Both water regulation (91% of respondents) and planted NTFPs
660 (81%) were considered to be important by most respondents; a finding that is consistent
661 across all four forest locations Table 10). The over-riding importance placed on water
662 regulation can be illustrated by a comment made by one respondent “[Other ecosystem
663 services] are what we need to live, but water is life”. The higher importance ranking of
664 planted NTFPs may be explained by the fact that more people used and attained higher
665
666
667
668
669
670
671
672

673 values of services from planted NTFP that the other forest ESs categories (Table 9).
674
675 However, it should be noted that many of the planted NTFPs (e.g. coffee and cacao) are
676 classified as “agricultural crops” under the Indonesian Law, thus cultivating these in the
677 state forest would be illegal.
678
679

680 Natural NTFP (40%) and timber (27%) were considered to be less important. However,
681 there were significant differences between locations in terms of the importance of these
682 services. Natural NTFPs were considered important (67%) in the Conservation forests,
683 while timber resources were considered important (76%) in the production forest. These
684 differences in preferences reflect the activities that are permitted in the different types of
685 forest. Analysis of the socioeconomic characteristics of respondents indicated that,
686 generally, there was little difference between the socio-economics of the people living in
687 the different forests.
688
689

690
691 *Table 9*
692

693 5 Discussion

694 5.1 Forest management, PES and the delivery of global and local services.

695
696 In this research, we explored the potential impacts of alternative land use change scenarios
697 on ecosystem services across different scales, from global to landscape and local levels.
698 Our analysis identified two scenarios: a community partnership (CP) scenario which
699 largely focused on increasing the area of secondary forest; and a forest restoration (FR)
700 scenario which increased the area of both secondary and primary forest. In terms of global
701 ES, it is clear that both of these scenarios can generate significant global carbon benefits:
702 over a 30-year period the CP scenario was estimated to generate between \$35 million to
703 \$69 million in carbon values, while the FR scenario would generate between \$38 million
704 and \$76 million (at carbon price \$5 to \$10 per metric tCO₂e). Unfortunately, impacts of
705 recovering primary and secondary forests on the ESs at landscape and local levels are
706 unclear. The results from the global hydrological model employed here, WaterWorld, were
707 inconclusive with regards to the impact of alternative scenarios on the delivery of
708 watershed services. Yet, evidence from the community surveys suggests that local
709 community members strongly believe that declining of watershed services, especially
710 water yield during dry season, is linked to historical events of deforestation and forest
711 degradation. In terms of local ESs, greatest benefits per household are found where
712 communities are allowed to cultivate and utilize planted NTFP (Table 9). Extraction of
713 natural NTFP and timber is important to some, but generally are valued less. Estimation of
714 an aggregate value of the local ESs in our study area is difficult due to overlapping land use
715 classes and forest functions (Table 3) and also uncertainty of land tenure arrangements.
716
717
718
719
720
721
722
723
724
725
726
727
728

729
730
731 For our analysis, we aggregated the average annual household value of forest ESs for each
732 forest type with the number of households in our study area that have agriculture as their
733 main occupation (Table 11). Our target population for this aggregation was the 23 sub-
734 districts surrounding mount Rinjani. These sub-districts had a population of 1.313 million
735 (with average household size of 3.57) as of 2010 and about 51.5% of population in the area
736 reported agriculture as their main occupation, according to the latest census (BPS/NTB,
737 2012). The total value of locally provided forest ESs, we aggregate the average household
738 values (Table 9) to the 51.5 % of households (Table 9). The value of local ESs delivered by
739 forests of Lombok is currently estimated at \$16 million to \$18 million annually.
740 Aggregated (undiscounted) over 30 years, the total value ranges from \$486 million to \$564
741 million.
742
743
744
745

746 *Table 10*

747
748 To allow a comparison of the carbon values (Table 7) with changes in values of locally
749 provided forest ESs under different land use scenarios, we assume increase in forests in CP
750 and FR scenarios (shown in Table 5 and 6) would be distributed to different forests
751 according to the current ratio.⁶
752

753 *Table 11*

754
755 Although the predicted changes in locally provided forest ESs values associated with the CP
756 or FR scenarios are approximate, we can demonstrate that these values are higher than the
757 carbon values (\$35.7 - \$69m over 30 years for the Community Partnership scenario and
758 \$38- \$76m for the Forest Restoration scenario).
759

760 Here we can draw a number of broad conclusions on the ES associations and potential
761 effects of global PES scheme. First, the value of local ESs are potentially greater than that of
762 global ES (carbon). Thus, carbon PES schemes (such as REDD+) need to be developed to
763 account for their impacts on local services. Second, higher benefits can be obtained by
764 encouraging secondary forests (retaining artificial gaps in the canopy to 50-60%), while
765 meeting community needs for NTFP and timber. Community partnership scenario is
766 focusing on recovery of secondary forests, which is possible through agroforestry with
767 dense forest covers. A previous study in the area shows that carbon stored in agroforestry
768 land with dense forest cover (178 metric ton/ha, Markum et al. 2013), is similar to that in
769 secondary forests (181 metric ton/ha, Table 2). Forest Restoration scenario included
770 additional reforestation to recover primary forests. From the community point of view,
771 primary forest does not generate significant benefits in terms of local ESs, although there
772 may be cultural and religious significance that this study did not capture.
773
774
775
776
777

778
779 ⁶ Forests in the NTB province includes 20% production forest, 48% protection forest and 32%conservation
780 forest.
781
782
783
784

5.2 Data discrepancies: reconciling global modelling and local perceptions

A key debate in ecosystem service assessments relates to identifying what is the most appropriate source of data to measure ecosystem service change (TEEB, 2010). In this research, we used both global models (e.g. WaterWorld) and local knowledge (in-person surveys) to assess the impact of forest management on water regulation. Global models have a wide appeal in that they are usually based on the theoretically sound scientific knowledge and can (in theory) be applied almost anywhere in the world at relatively low costs. In the absence of long term observation records, collecting local data may require surveys with local stakeholders/communities, which is often based on implicit and experiential knowledge rather than scientific evidence (Christie, 2012). In our research, we found discrepancies between these two data sources, particularly in terms of the predicted impact of forest management on water regulation services.

The WaterWorld model showed that more tree cover decreases baseflow in both dry and wet seasons in most places due to increased evapotranspiration, while increasing baseflow in some places due to enhanced infiltration. This is supported by many studies that indicate higher evapotranspiration of trees than other cover types (Kaimowitz, 2004; Calder, 2001; Van Dijk et al., 2007). The overall effects of both scenarios were negative on watershed services. However, residents frequently reported contrasting views based on experience and observation. In surveys conducted in Lombok communities in 2002, residents reported that springs had gone dry in response to forest clearing (WWF 2002). According to Pirard (2011), 43% of the large springs surrounding Rinjani dried up in the decade 1992-2002, while approximately 30% of the Mount Rinjani was deforested during the same decade. Klock and Sjah (2012) reported that, during the previous twenty years, more than 400 springs dried up on Mount Rinjani, most likely from deforestation. The Jakarta Post (2014) reported that there are 107 springs currently utilized in Lombok, with many other sources not yet recorded by the government and under the control of local residents. In the above article, a local Village Head is quoted as emphasizing the function of forests as a sponge, absorbing water and releasing it gradually, thus enhancing water quality. Our community survey also confirm that water regulation was considered important to people living in the forest margins and the follow-up focus group discussions highlighted the strong local belief that retaining and enhancing forest cover protected water supply and water quality.

On the one hand, it is possible that the WaterWorld model underestimates the increase in the rate of soil infiltration with forest cover. In contrast to other land use cover types, natural and recovered tropical rainforests throughout the world exhibit greater leaf litter, soil organic matter, and soil bioturbation by roots and fauna, as well as less soil surface sealing due to rainsplash, soil compaction by farm equipment, and impervious surface as part of infrastructure, all of which allow for enhanced infiltration and reduced soil erosion (Kumagai et al. 2009, Hairah et al. 2006, Bruijnzeel et al. 2004, Calder 2001, Mapa 1995).

841
842
843 The net result of enhanced infiltration beneath recovered forest can be greater
844 groundwater recharge, which can lead to improved dry season baseflow (Dias et al. 2015,
845 Ogden et al. 2013, Peña-Arancibia et al. 2012, Bruijnzeel et al. 2006, Bruijnzeel et al. 2004).
846 Forests do tend to increase evapotranspiration substantially compared with rain-fed
847 agriculture and even higher infiltration rates cannot compensate for less water being
848 available for infiltration and runoff. However, this basic assumption may be problematic in
849 a tropical setting where atmospheric moisture is abundant; low vapor pressure deficit may
850 result in reforestation having a negligible effect on evapotranspiration (Brauman 2012).
851 Malder et al. (2013) argued that the data to formulate hydrological effects of land use
852 change in global models are often generated outside the tropics with stable soil conditions
853 and there is “complete lack of research on how forestation on degraded land affect
854 hydrological functioning at the landscape scale”
855

856
857
858
859 On the other hand, relying only on anecdotal data could lead to an erroneous conclusion
860 regarding changes in spring discharge conditions caused by forest change. As noted above,
861 illegal logging, encroachment and occupation reached its peak after the fall of the Suharto
862 regime in 1998. Loss of forest cover notwithstanding, climate variation could have had a
863 bearing on residents’ perception of the effects of forest clearing. Long-term precipitation
864 records shows that there are a great deal variations in precipitation during dry season
865 among different locations and also years leading up to 1998 were dry, especially around
866 the Mataram city in low elevation. Figure 6 shows average precipitation records from six
867 weather stations around the city of Mataram and four weather stations near the survey
868 locations around Rinjani Mountain. It is very possible that declining spring discharge was
869 more directly related to climate than to land use change. Furthermore, the existence of the
870 PES mechanism between the city of Mataram and the communities in their upper
871 watershed area may have raised expectation of forest-margin communities that they may
872 be able to be compensated for managing forest for watershed services that they provide. It
873 may be especially true for the community D that gained Community Forest recognition and
874 their forest represents important watershed for another city (city of Praya).
875
876
877
878

879 *Figure 6*
880

881 In the absence of long-term spring discharge measurement data, the effects of two land use
882 change scenarios remain inconclusive. Empirical data are needed to compliment and refine
883 coarse models that are based on globally available datasets, in order to accurately evaluate
884 land management practices that enhance watershed services (Wohl et al. 2012, Jose 2009,
885 Locatelli and Vignola 2009). But what is clear from the above discussions is that there are
886 number of factors that might affect the accuracy of both the global models and local
887 opinions, and it is only through collecting data at both levels and exploring differences
888 between the data are we likely to come closer to accurate predictions.
889
890
891
892
893
894
895
896

5.3 Tradeoffs and synergies between global and local ecosystem services

In both land use change scenarios, there is significant potential for developing forest carbon projects in the study area. However, strict protection of forest as carbon stock in a densely populated region with complex social dynamics would be costly and ineffective (Skutsch et al. 2011). Most of the global forest carbon projects are financed input-based projects, which often set a flat-rate payment per hectare under a contractual agreement of inputs to increase carbon stock (e.g., not cutting trees, tree planting or other management activities) (Wunder, 2008; Skutch et al., 2011). Input-based carbon projects allow the inputs (e.g. agreed management actions) to be negotiated between project proponents and local communities, which makes the projects less politically contentious and allows broader management goals to be addressed (Skutch et al., 2011). However, input-based projects would likely generate fewer carbon credits overall while making it difficult to trace carbon to project activities (Skutch et al., 2011). Lack of reporting on actual performance of existing projects, in terms of carbon sequestration, poses a serious problem for the future of global carbon financing (Fischer et al., 2016).

We previously advocated for an input-based mechanism with readiness activities for capacity building of both institutions and communities in the study area (Kim et al. 2016). The results of this study show that simply increasing tree cover is not enough for enhancing ES at all scales. Reforestation to increase carbon stock without considering the landscape as a whole can have negative impacts on watershed services (e.g. reduced runoff, and concentrated pollutants downstream from the remaining agricultural lands). However, the results are inconclusive, as change in land cover and forest canopy structure have complex effects on fog input, rainfall interception, throughfall, stemflow, infiltration and runoff generation (Bruijnzeel et al., 2011; Deitz et al., 2006, Bruijnzeel et al., 2004) some of which the hydrologic model employed could not fully account for in the absence of detailed field studies on the hydrology of the study area. In addition, implementing reforestation projects without consideration for local livelihoods can be detrimental to forest-margin communities. Thus the details of agreed-upon management actions would dictate the nature of association among different ES.

Global forest carbon projects are unlikely to succeed without addressing food, energy and water provisions at the local level (Minang and van Noordwijk, 2013; van Noordwijk et al., 2016). Indeed, the findings from our community study demonstrate that local people obtain a wide range of benefits from forests. Mixed agroforestry systems can be a key strategy for increasing the multi-functionality of land uses (Minang et al., 2014) as well as enhancing the diversity of local communities' livelihood options (Hoang et al., 2014). Potential values of agroforestry systems for integrating forests into a multifunctional landscape have been recognized, although the benefits may vary depending on practices and landscape configurations (Table 9; Dewi et al., 2013; Prabhu et al. 2015). Impacts of

953
954
955 agroforestry systems on the landscape's ability to provide watershed services vary
956 depending on species selection of crops and shade trees and different cultivation practices
957 employed (Condon et al. 2002; Thierfelder et al. 2009). For example, different tropical tree
958 species have shown a wide range of production rates per cost of water loss by transpiration
959 (Cernusak et al. 2007) and different root depths for promoting soil infiltration of rainfall
960 (Ghestem et al. 2011). Local communities that we surveyed also recognized specific
961 "watershed trees" e.g. Beringin (*Ficus benjamina*), where soils underneath were observed
962 to be more moist, compared to other fast growing species, e.g. Sengon (*Albizia chinensis*).
963 Also the amount of water needed to produce different agroforestry crops varies greatly. For
964 example, coffee and cacao tend to have high water footprint (about 22,900 m³/ton for
965 coffee and 9,414 m³/ton for cacao), compared to other crops (e.g. 514 m³/ton for cassava)
966 (Bulsink et al. 2010). Thus it is essential for forest carbon projects to consider the effects of
967 increasing tree covers on a range of ESs in the landscape and mitigate potential negative
968 impacts. van Noordwijk et al. (2016) discussed several metrics for developing mitigation
969 actions through agroforestry that can enhance different watershed services, including
970 water yield, water flow and water quality, while improving local livelihood. The plausible
971 actions that can be incorporated into forest carbon projects include replacing fast-tree
972 plantations with low-evapotranspiration species and increasing presence of deep rooted
973 trees while promoting litter layers and agricultural practices that increase infiltration and
974 soil water content, enhancing sediment filter strips in fields and across landscape matrix, as
975 well as protecting river banks, riparian zones and landslide-prone slopes, springs and
976 sources of domestic water use.

977
978 It is clear from the community surveys that the value of forest ESs to local communities is
979 significant but vary by locations. Although it is difficult to fully untangle the underlying
980 reasons for this, these differences are reflective of different designated functions of forest,
981 suitability of land for agroforestry, and the security of land tenure. Community partnership
982 scenario focused on recovery of secondary forests through agroforestry to provide food,
983 energy and livelihood options for local communities. However, the synergy among global,
984 landscape and local ESs can be created only if the clear accountability can be established
985 for maintaining the threshold of forest covers (for carbon accounting) with specific species
986 selection and agroforestry practices to increase soil infiltration and water use efficiency
987 (for watershed services). Although the Forest Restoration scenario adds recovery of
988 primary forests, local communities may lack motivation for restoration activities for
989 ecological benefits. Global PES, such as REDD+, can help establishing technical guidelines
990 for agroforestry practices that maximize carbon and watershed benefits, as well as
991 developing community monitoring schemes, while promoting ecological restoration of
992 primary forest with added carbon values under Forest Restoration scenario.

6 Conclusions

In this paper, we assessed realistic forest management scenarios for reforestation in Eastern Indonesia and their effects on both global and local ES provisions. We have demonstrated that reforestation to increase carbon, i.e. global, ex-situ, ecosystem services, can have varying impacts on those ES recognized locally. In particular, our results point to the significance of water regulation and planted non-timber forest products to local communities. To create a sustainable local solution, we need to go beyond the zero-sum argument of livelihoods versus conservation. We demonstrated how global PES, such as REDD+, and landscape level PES, such as payment for watershed services, can help create, not dictate, such solution through agroforestry that meets global, landscape and local demands for ESs.

7 References

- Bonan, G.B. 2008. Forests and climate change: forcings, feedbacks, and the climate benefits of forests. *Science*, 320, 1444–1449.
- Bae, J.S., Kim, C., Kim, Y.-S., Latifah, S., Afifi, M., Fisher, L.A., Lee, S.M., Kim, I.-A., Kang, J., Kim, R., Kim, J.S., 2014. Opportunities for implementing REDD+ to enhance sustainable forest management and improve livelihoods in Lombok, NTB, Indonesia. Working Paper 151. CIFOR. Bogor, Indonesia
- Biermann, F., 2010. Beyond the intergovernmental regime: recent trends in global carbon governance. *Current Opinion in Environmental Sustainability*, 2(4), pp.284-288.
- Blom, B., Sunderland, T., Murdiyarso, D., 2011. Getting REDD to work locally, lessons learned from integrated conservation and development projects. *Environ. Sci. Policy* 13, 164–172.
- Brauman, K.A., Freyberg, D.L., and Daily, G.C. 2012. Potential evapotranspiration from forest and pasture in the tropics: A case study in Kona, Hawai'i. *Journal of Hydrology*, Volumes 440–441: 52–61.
- Bruijnzeel, L.A., M. Mulligan, and F.S. Scantena. 2011. Hydrometeorology of tropical montane cloud forests: emerging patterns. *Hydrological Processes*, 25, 465-498.
- Bruijnzeel, L.A., Burkard, R., Carvajal, A., Frumau, K.F.A., Köhler, L., Mulligan, M., Schellekens, J., Schmid, S. and Tobón-Marin, C., 2006. Hydrological impacts of converting tropical montane cloud forest to pasture, with initial reference to northern Costa Rica. DFID Project Report
- Bruijnzeel, L.A. 2004. Hydrological functions of tropical forests: not seeing the soil for the trees? *Agriculture, Ecosystems and Environment* 104 (2004) 185–228.

- 1065
1066
1067 BPS, 2016. . Indonesia Human Development Index. Available at:
1068 http://www.bps.go.id/eng/tab_sub/view.php?tabel=1&daftar=1&id_subyek=26&no
1069 [tab=2.](http://www.bps.go.id/eng/tab_sub/view.php?tabel=1&daftar=1&id_subyek=26&no) (accessed Aug. 10 2016).
1070
1071 BPS-NTB, 2015. Nusa Tenggara Barat dalam Angka (NTB Statistics) Tahun 2014. Badan
1072 Pusat Statistik Provinsi Nusa Tenggara Barat. Mataram.
1073
1074 BPS, 2012. Regional profile, Nusa Tenggara Barat, Available online:
1075 <http://www.bps.go.id/profile/ntb.shtml> (accessed Aug. 10 2013).
1076
1077
1078 Bulsink, F., Hoekstra, A.Y. and Booij, M.J., 2009. The water footprint of Indonesian provinces
1079 related to the consumption of crop products, Value of Water Research Report Series
1080 No. 37.
1081
1082 Calder, I.R. 2001. Canopy processes: implications for transpiration, interception and splash
1083 induced erosion, ultimately for forest management and water resources. *Plant*
1084 *Ecology*, 153: 203–214, 2001.
1085
1086 Cernusak, L.A., Winter, K., Aranda, J., Turner, B.L. and Marshall, J.D., 2007. Transpiration
1087 efficiency of a tropical pioneer tree (*Ficus insipida*) in relation to soil fertility.
1088 *Journal of Experimental Botany*, 58(13), pp.3549-3566.
1089
1090 Christie M, Fazey I, Cooper R, Hyde H and Kenter JO. 2012. An Evaluation of Monetary and
1091 Non-monetary Techniques for Assessing the Importance of Biodiversity and
1092 Ecosystem Services to People in countries with developing economies. *Ecological*
1093 *Economics*, 83, 69-80.
1094
1095 Condon, A.G., Richards, R.A., Rebetzke, G.J. and Farquhar, G.D., 2002. Improving intrinsic
1096 water-use efficiency and crop yield. *Crop Science*, 42(1), pp.122-131.
1097
1098 Daily, G.C., Polasky, S., Goldstein, J., Kareiva, P.M., Mooney, H.A., Pejchar, L., Ricketts, T.H.,
1099 Salzman, J. and Shallenberger, R., 2009. Ecosystem services in decision making: time
1100 to deliver. *Frontiers in Ecology and the Environment*, 7(1), pp.21-28.
1101
1102 De Groot, R.S., Alkemade, R., Braat, L., Hein, L. and Willemen, L., 2010. Challenges in
1103 integrating the concept of ecosystem services and values in landscape planning,
1104 management and decision making. *Ecological complexity*, 7(3), pp.260-272.
1105
1106 Dewi, S., van Noordwijk, M., Ekadinata, A. and Pfund, J.L., 2013. Protected areas within
1107 multifunctional landscapes: Squeezing out intermediate land use intensities in the
1108 tropics?. *Land Use Policy*, 30(1), pp.38-56.
1109
1110 Dias, L.C.P., Macedo, M.N., Costa, M.H., Coe, M.T. and Neill, C., 2015. Effects of land cover
1111 change on evapotranspiration and streamflow of small catchments in the Upper
1112 Xingu River Basin, Central Brazil. *Journal of Hydrology: Regional Studies*, 4, pp.108-
1113 122.
1114
1115 Enrici, A. and Hubacek, K., 2016. Business as usual in Indonesia: governance factors
1116 effecting the acceleration of the deforestation rate after the introduction of REDD+.
1117 *Energy, Ecology and Environment*, 1(4), pp.183-196.
1118
1119
1120

- 1121
1122
1123 Food and Agricultural Organization(FAO), 2010. Global Forest Resources Assessment 2010,
1124 Main report. FAO Forestry Paper No. 163. Rome, FAO, 340-41.
1125
1126 Fazey, I, Kesby, M, Evely, A, Latham, I, Wagatora, D, Hagasua, J-E, Reed, M, S, Christie, M
1127 2010. A three-tiered approach to participatory vulnerability assessment in the
1128 Solomon Islands. *Global Environmental Change*. 20, 713-728
1129
1130 Fischer, R., Hargita, Y. and Günter, S., 2016. Insights from the ground level? A content
1131 analysis review of multi-national REDD+ studies since 2010. *Forest Policy and*
1132 *Economics*, 66, pp.47-58.
1133
1134 Ghestem, M., Sidle, R.C. and Stokes, A., 2011. The influence of plant root systems on
1135 subsurface flow: implications for slope stability. *BioScience*, 61(11), pp.869-879.
1136
1137 Goldstein, A., Neyland, E. and Bodnar, E., 2015. Converging at the crossroads State of forest
1138 carbon finance 2015. *Forest Trends' Ecosystem Marketplace*. Washington, DC.
1139
1140 Griscom, B., D. Ganz, N. Virgilio, F. Price, J. Hayward, R. Cortez, G. Dodge, J. Hurd, F. L.
1141 Lowenstein, B. Stanley. 2009. *The Hidden Frontier of Forest Degradation: A Review*
1142 *of the Science, Policy and Practice of Reducing Degradation Emissions*. The Nature
1143 Conservancy, Arlington, VA. 76 pages.
1144
1145 Gómez-Baggethun E, de Groot R, Lomas PL, Montes C. 2010. The history of ecosystem
1146 services in economic theory and practice: from early notions to markets and
1147 payment schemes. *Ecological Economics* 69(6): 1209–1218. DOI:
1148 10.1016/j.ecolecon.2009.11.007
1149
1150 Gleeson, T., Smith, L., Moosdorf, N., Hartmann, J., Dürr, H.H., Manning, A.H., van Beek, L.P.
1151 and Jellinek, A.M., 2011. Mapping permeability over the surface of the Earth.
1152 *Geophysical Research Letters*, 38(2).
1153
1154 Hansen, M.C., Potapov, P.V., Moore, R., Hancher, M., Turubanova, S.A., Tyukavina, A., Thau,
1155 D., Stehman, S.V., Goetz, S.J., Loveland, T.R. and Kommareddy, A., 2013. High-
1156 resolution global maps of 21st-century forest cover change. *science*, 342(6160),
1157 pp.850-853.
1158
1159 Hamrick, K. and Goldstein, A., 2016. Raising ambition: State of the voluntary carbon
1160 markets 2016. *Forest Trends' Ecosystem Marketplace*. Washington, DC.
1161
1162 Hairiah, K., Sulistyani, H., Suprayogo, D., Purnomosidhi, P., Widodo, R.H. and Van Noordwijk,
1163 M., 2006. Litter layer residence time in forest and coffee agroforestry systems in
1164 Sumberjaya, West Lampung. *Forest Ecology and Management*, 224(1), pp.45-57.
1165
1166 Hein, L., Van Koppen, K., De Groot, R.S. and Van Ierland, E.C., 2006. Spatial scales,
1167 stakeholders and the valuation of ecosystem services. *Ecological economics*, 57(2),
1168 pp.209-228.
1169
1170 Hoang, M.H., Namirembe, S., van Noordwijk, M., Catacutan, D., Öborn, I., Perez-Teran, A.S.,
1171 Nguyen, H.Q. and Dumas-Johansen, M.K., 2014. Farmer portfolios, strategic diversity
1172 management and climate-change adaptation–implications for policy in Vietnam and
1173 Kenya. *Climate and Development*, 6(3), pp.216-225.
1174
1175
1176

- 1177
1178
1179 Intarini, D.Y., Resosudarmo, I.A.P., Komalasari, M., Ekaputri, A.E., 2015. Ketapang
1180 Community Carbon Pools, Ketapang, West Kalimantan, Indonesia, in: Sills E.O.,
1181 tmadja, S., de Sassi, C., Duchelle, A.E., Kweka, D., Resosudarmo, I.A.P., Sunderlin W.D.
1182 (Eds.), REDD+ on the Ground: A Case Book of Subnational Initiatives around the
1183 World, CIFOR. Bogor, Indonesia
1184
1185 Jakarta Post. 2014. Preserving Lombok's natural water sources. The Jakarta Post, Tuesday,
1186 June 24, 2014, 12:24 pm.
1187
1188 Jang, S.K., Bae, J. S., 2014. New Forest Governance in Indonesia: A Forest Partnership
1189 between Forest Management Units and Local Communities. *Southeast Asia Study* 24,
1190 95-144
1191
1192 Jose, S. 2009. Agroforestry for ecosystem services and environmental benefits: an
1193 overview. *Agroforestry Systems*, 76 (1) 1-10.
1194
1195 Kim, Y.S., Bae, J.S., Fisher, L.A., Latifah, S., Afifi, M., Lee, S.M. and Kim, I.A., 2016. Indonesia's
1196 forest management units: effective intermediaries in REDD+ implementation?.
1197 *Forest Policy and Economics*, 62, pp.69-77.
1198
1199 Klock, J., and Sjah, T. 2011. Farmer water management strategies for dry season water
1200 shortages in central Lombok, Indonesia. *Natural Resources*, 2011, 2, 114-124.
1201 doi:10.4236/nr.2011.
1202
1203 Kumagai, T.O., Yoshifuji, N., Tanaka, N., Suzuki, M. and Kume, T., 2009. Comparison of soil
1204 moisture dynamics between a tropical rain forest and a tropical seasonal forest in
1205 Southeast Asia: Impact of seasonal and year-to-year variations in rainfall. *Water*
1206 *Resources Research*, 45(4).
1207
1208 Lee, S.M., Kim, Y.S., Jaung, W., Latifah, S., Afifi, M. and Fisher, L.A., 2015. Forests, fuelwood
1209 and livelihoods—energy transition patterns in eastern Indonesia. *Energy Policy*, 85,
1210 pp.61-70.
1211
1212 Leimona, B., Lusiana, B., van Noordwijk, M., Mulyoutami, E., Ekadinata, A. and Amaruzaman,
1213 S., 2015. Boundary work: Knowledge co-production for negotiating payment for
1214 watershed services in Indonesia. *Ecosystem Services*, 15, pp.45-62.
1215
1216 Locatelli, B. and Vignola, R., 2009. Managing watershed services of tropical forests and
1217 plantations: can meta-analyses help?. *Forest Ecology and Management*, 258(9),
1218 pp.1864-1870.
1219
1220 Malmer, A., Murdiyarso, D. Bruijnzeel, L.A. and Ilstedt, U. 2010. Carbon sequestration in
1221 tropical forests and water: a critical look at the basis for commonly used
1222 generalizations. *Global Change Biology*, 16(2), pp.599-604.
1223
1224 Margono, B.A., Potapov, P.V., Turubanova, S., Stolle, F. and Hansen, M.C., 2014. Primary
1225 forest cover loss in Indonesia over 2000-2012. *Nature Climate Change*, 4(8), pp.730-
1226 735.
1227
1228 MA (Millennium Ecosystem Assessment). 2005. *Ecosystems and Human Well-being:
1229 Synthesis*. Island Press, Washington, DC.
1230
1231
1232

- 1233
1234
1235
1236
1237
1238
1239
1240
1241
1242
1243
1244
1245
1246
1247
1248
1249
1250
1251
1252
1253
1254
1255
1256
1257
1258
1259
1260
1261
1262
1263
1264
1265
1266
1267
1268
1269
1270
1271
1272
1273
1274
1275
1276
1277
1278
1279
1280
1281
1282
1283
1284
1285
1286
1287
1288
- Mapa, R.B., 1995. Effect of reforestation using *Tectona grandis* on infiltration and soil water retention. *Forest Ecology and Management*, 77(1-3), pp.119-125.
- Markum, M., Soesilaningsih, E.A., Suprayogo, D. and Hairiah, K., 2013 Contribution of Agroforestry System in Maintaining carbon stocks and reducing emission rate at Jangkok Watershed, Lombok island. *AGRIVITA, Journal of Agricultural Science*, 35(3), pp.207-217.
- Minang, P.A., van Noordwijk, M., Freeman, O.E., Mbow, C., de Leeuw, J. and Catacutan, D. eds., 2014. *Climate-smart landscapes: multifunctionality in practice*. ASB Partnership for The Tropical Forest margins.
- Minang, P.A. and van Noordwijk, M., 2013. Design challenges for achieving reduced emissions from deforestation and forest degradation through conservation: leveraging multiple paradigms at the tropical forest margins. *Land Use Policy*, 31, pp.61-70.
- Motel, P.C., Pirard, R. and Combes, J.L., 2009. A methodology to estimate impacts of domestic policies on deforestation: Compensated Successful Efforts for “avoided deforestation”(REDD). *Ecological Economics*, 68(3), pp.680-691.
- Mouchet, M.A., Lamarque, P., Martín-López, B., Crouzat, E., Gos, P., Byczek, C. and Lavorel, S., 2014. An interdisciplinary methodological guide for quantifying associations between ecosystem services. *Global Environmental Change*, 28, pp.298-308.
- Mulligan, M. 2013. *WaterWorld: a self-parameterising, physically based model for application in data-poor but problem-rich environments globally*. IWA Publishing, *Hydrology Research*, 44.5: 748-769.
- Mulligan, M. 2010. Modeling the tropics-wide extent and distribution of cloud forest and cloud forest loss, with implications for conservation priority in Bruijnzeel, L.A., Scatena, F.N., Hamilton, L.S. (editors), *Tropical Montane Cloud Forests: Science for Conservation and Management*. Cambridge University Press, Cambridge. pp14-39
- Ogden, F. L., Crouch, T.D., Stallard, R.F., and Hall, J.S. 2013. Effect of land cover and use on dry season river runoff, runoff efficiency, and peak storm runoff in the seasonal tropics of Central Panama. *Water Resources Research*, 49 (12) 8443–8462.
- Pan Y., R.A. Birdsey, J. Fang, R. Houghton, P.E. Kauppi, W.A. Kurz, O.L. Phillips, A. Shvidenko, S.L. Lewis, J.G. Canadell, P. Ciais, R.B. Jackson, S.W. Pacala, A.D. McGuire, S. Piao, A. Rautiainen, S. Sitch, D. Hayes. 2011. A large and persistent carbon sink in the world's forests. *Science* 333: 988-993.
- Peña-Arancibia, J.L., van Dijk, A.I.J., M., Guerschman, J.P. Mulligan, M. Bruijnzeel, A.L. and McVicar, T.R. 2012. Detecting changes in streamflow after partial woodland clearing in two large catchments in the seasonal tropics. *Journal of Hydrology* 416–417: 60–71.
- Pirard, R. 2012. Payments for Environmental Services (PES) in the public policy landscape: “Mandatory” spices in the Indonesian recipe. *Forest Policy and Economics*. 18:23-29

- 1289
1290
1291 Pistorius T. 2012. From RED to REDD+: The evolution of a forest-based mitigation
1292 approach for developing countries. *Current Opinion in Environmental Sustainability*
1293 4(6):638-45.
1294
- 1295 Prabhu, R., Barrios, E., Bayala, J., Diby, L., Donovan, J., Gyau, A., Graudal, L., Jamnadass, R.,
1296 Kahia, J., Kehlenbeck, K. and Kindt, R., 2015. Agroforestry: Realising the promise of
1297 an agroecological approach. In *Agroecology for Food Security and Nutrition:*
1298 *Proceedings of the FAO International Symposium, Rome, FAO* (pp. 201-224).
1299
- 1300 Prasetyo, F.A., Aritta, S., Purwanto, Hakim, H., 2009. Making Policies Work for Payment for
1301 Environmental Services (PES), Evaluation of the Experience of Formulating
1302 Conservation Policies in Districts of Indonesia. *Journal of Sustainable Forestry*. 28,
1303 415–433
1304
- 1305 Republic of Indonesia (RoI). 2007. Government Regulation No. 6/2007 Forest Arrangement
1306 and Establishment of Forest Management Plan as well as Forest Exploitation (in
1307 Indonesian). Republic of Indonesia, Jakarta. Indonesia
1308
- 1309 Resosudarmo, I.A.P., 2004. Closer to people and trees: will decentralisation work for the
1310 people and the forests of Indonesia?. *The European Journal of Development*
1311 *Research*, 16(1), pp.110-132.
1312
- 1313 Rosenbarger, A., Gingold, B., Prasodjo, R., Alisjahbana, A., Putraditama, A. and Tresya, D.,
1314 2013. How to change legal land use classifications to support more sustainable palm
1315 oil in Indonesia. World Resources Institute, Washington, DC.
- 1316 RoI. 1999. Law No. 41 of 1999 on Forestry. Republic of Indonesia, Jakarta. Indonesia
1317
- 1318 Rodríguez, J., Beard Jr, T.D., Bennett, E., Cumming, G., Cork, S., Agard, J., Dobson, A. and
1319 Peterson, G., 2006. Trade-offs across space, time, and ecosystem services. *Ecology*
1320 *and society*, 11(1).
1321
- 1322 Sahide, M. A. K., S. Supratman, A. Maryudi, Y.-S. Kim, and L. Giessen. 2016. Decentralisation
1323 Policy as Recentralisation Strategy: Forest Management Units and Community
1324 Forestry in Indonesia. *International Forestry Review*, 18(1), 78-95.
- 1325 Schweizer, R., Dupuis, J. and De Buren, G., 2016. Environmental innovation strategies:
1326 When and why NGOs go beyond public regulations. *Environmental Politics*, 25(5),
1327 pp.899-920.
1328
- 1329 Skutsch, M., Vickers, B., Georgiadou, Y. and McCall, M., 2011. Alternative models for carbon
1330 payments to communities under REDD+: A comparison using the Polis model of
1331 actor inducements. *Environmental Science & Policy*, 14(2), pp.140-151.
- 1332 Simula, M. 2010. Analysis of REDD+ financing gaps and overlaps. REDD+ partnership.
1333 <http://reddpluspartnership.org/65524/en/>(accessed 14 November 2011).
1334
- 1335 Stevens C, Winterbottom R, Springer J and Reytar K. 2014. Securing Rights, Combating
1336 Climate Change: How Strengthening Community Forest Rights Mitigates Climate
1337 Change. Washington DC: World Resources Institute and Rights and Resources
1338 Initiative.
1339
1340
1341
1342
1343
1344

- 1345
1346
1347 TEEB, 2010. The Economics of Ecosystems and Biodiversity: Ecological and Economic
1348 Foundations. Edited by Pushpam Kumar Earthscan, London and Washington.
1349
- 1350 Thierfelder, C. and Wall, P.C., 2009. Effects of conservation agriculture techniques on
1351 infiltration and soil water content in Zambia and Zimbabwe. *Soil and tillage*
1352 *research*, 105(2), pp.217-227.
1353
- 1354 UN-REDD Programme, 2017, About REDD+. Geneva, UN-REDD Programme. Available
1355 online: <http://www.un-redd.org/> (accessed March. 10 2017).
1356
- 1357 van Noorwijk, M., Y.-S. Kim, B. Leimona, K. Hairiah, L.A. Fisher. 2016. Metrics of Water
1358 Security, Adaptive Capacity, and Agroforestry in Indonesia. *Current Opinion in*
1359 *Environmental Sustainability* 21: 1-8 DOI: 10.1016/j.cosust.2016.10.00
- 1360 VCS. 2012 (updated in 2013) Estimation of baseline carbon stock changes and greenhouse
1361 gas emissions from unplanned deforestation (BL-UP), v3.2 Available <http://v-c->
1362 [s.org/methodologies/VM0007](http://v-c-s.org/methodologies/VM0007) Last accessed Nov. 2013.
1363
- 1364 Willemen, L., Hein, L., van Mensvoort, M.E. and Verburg, P.H., 2010. Space for people, plants,
1365 and livestock? Quantifying interactions among multiple landscape functions in a
1366 Dutch rural region. *Ecological Indicators*, 10(1), pp.62-73.
1367
- 1368 Wohl, E., Barros, A., Brunsell, N., Chappell, N.A., Coe, M., Giambelluca, T., Goldsmith, S.,
1369 Harmon, R., Hendrickx, J.M., Juvik, J. and McDonnell, J., 2012. The hydrology of the
1370 humid tropics. *Nature Climate Change*, 2(9), pp.655-662.
- 1371 Wunder, S., Engel, S., Pagiola, S., 2008. Taking stock: A comparative analysis of payments for
1372 environmental services programs in developed and developing countries. *Ecological*
1373 *Economics*. 65, 834-852.
1374
- 1375 WWF. 2008. Studi Analisis Hidrologis Dan Perubahan Tutupan Lahan (land use land cover
1376 change) Kawasan Gunung Rinjani, Lombok
1377
- 1378 WWF. 2002. Resource Economic Valuation of Rinjani Mountain Area. WWF Indonesia Nusa
1379 Tenggara Program, Mataram, Indonesia
1380
1381
1382
1383
1384
1385
1386
1387
1388
1389
1390
1391
1392
1393
1394
1395
1396
1397
1398
1399
1400

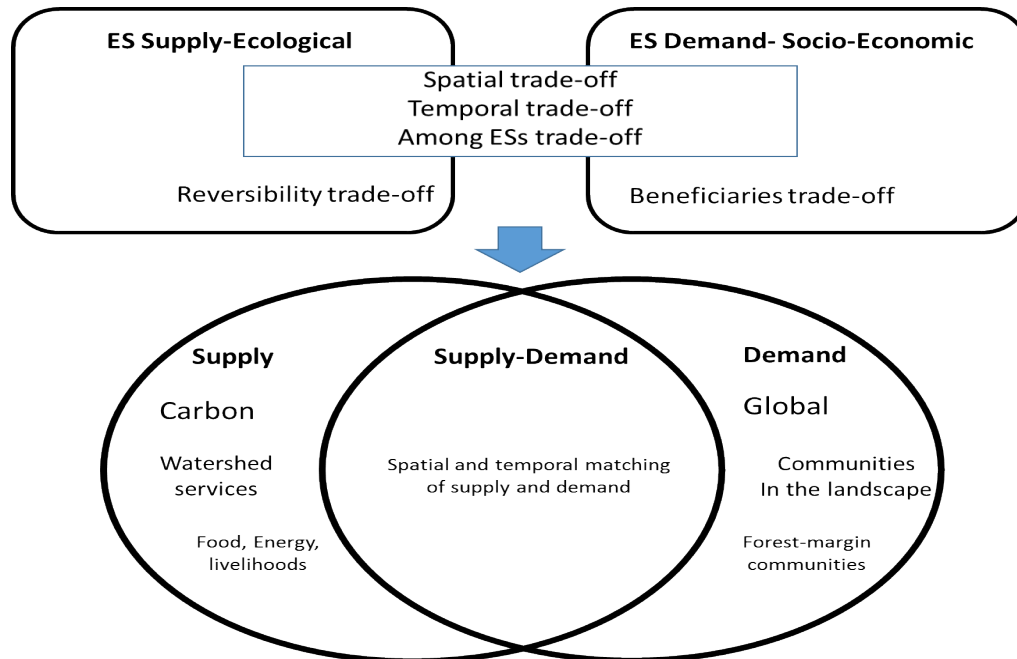


Figure 1: Conceptual framework to assess ecosystem services trade-offs (modified from Mouchet et al. 2014)

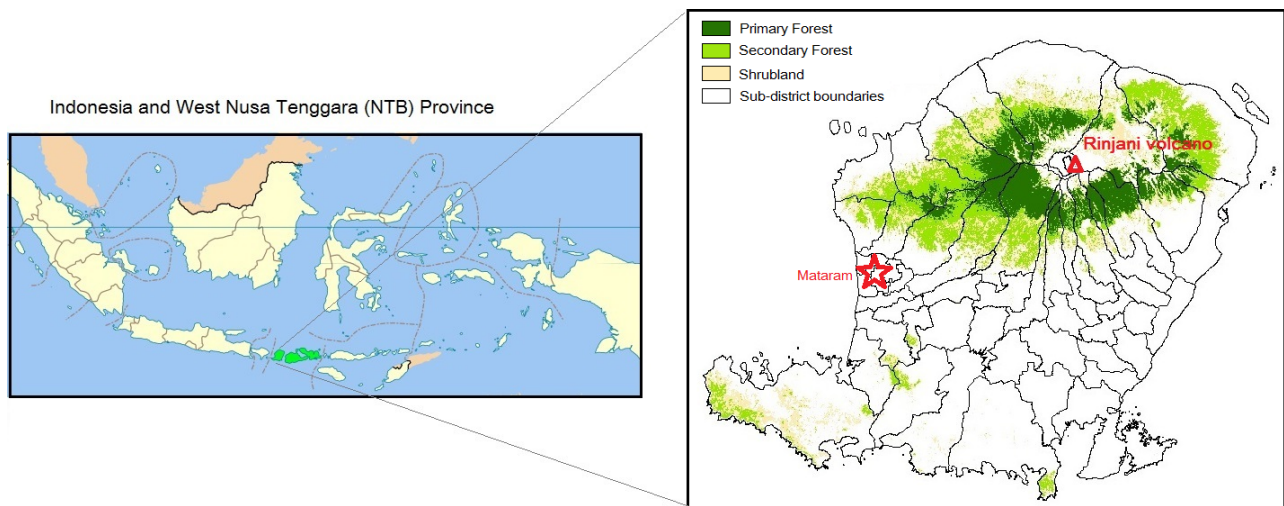


Figure 2: Map of West Nusa Tenggara province and the remaining forests in Lombok island (source: National Institute of Forest Science, South Korea)

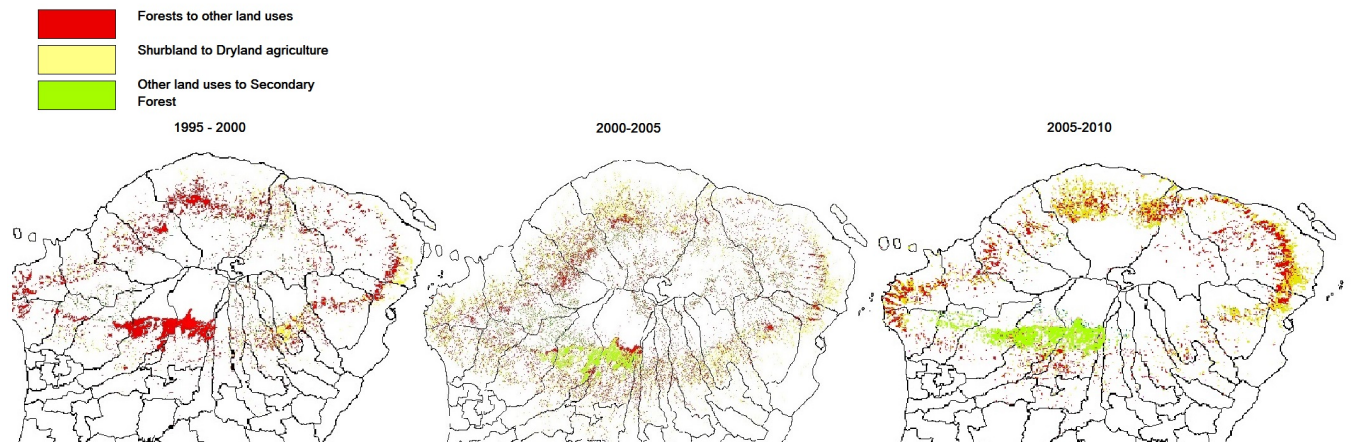


Figure 3. Changes in forested area for three 5-year periods (Data source: National Institute of Forest Science, South Korea).

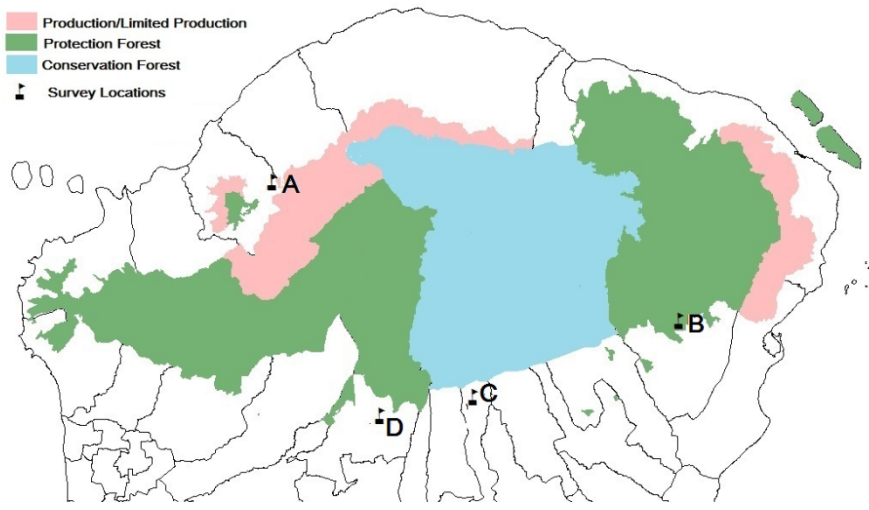
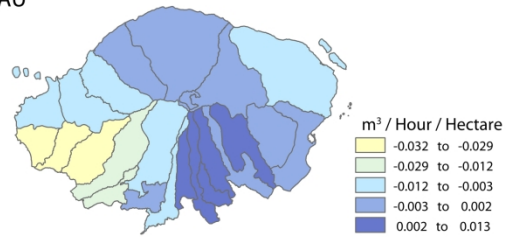
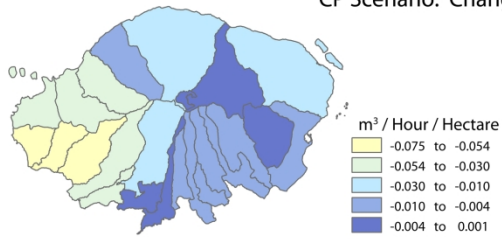


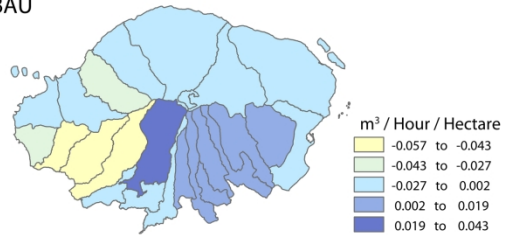
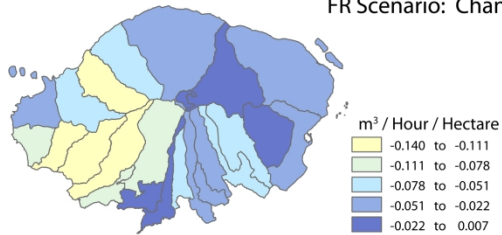
Figure 4: Survey locations (A, B, C, D) and designated forest functions.

Average Surface Runoff (in cubic meters/hour/hectare)

CP Scenario: Change from BAU



FR Scenario: Change from BAU

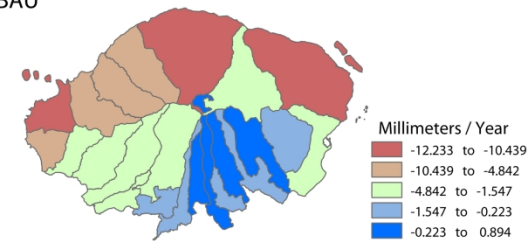
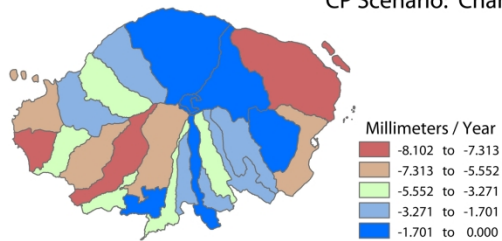


Wet Season

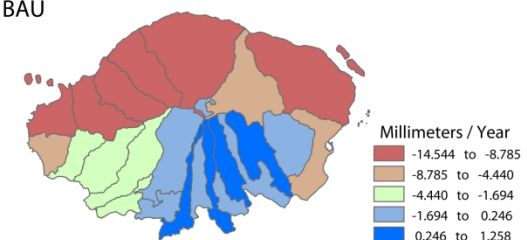
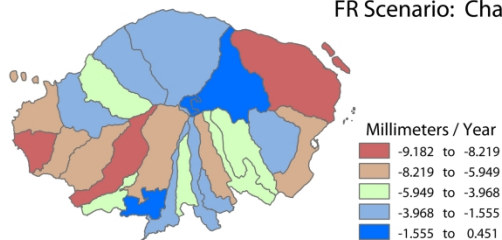
Dry Season

Average Water Balance (in mm/year)

CP Scenario: Change from BAU



FR Scenario: Change from BAU



Wet Season

Dry Season

Figure 5: Changes in Average Surface Runoff(m³/hour/ha) and Water Balance (mm/year) from recovery of secondary forests in Community Partnership (CP) scenario and recovery of secondary and primary forests in Forest Restoration (FR) scenario

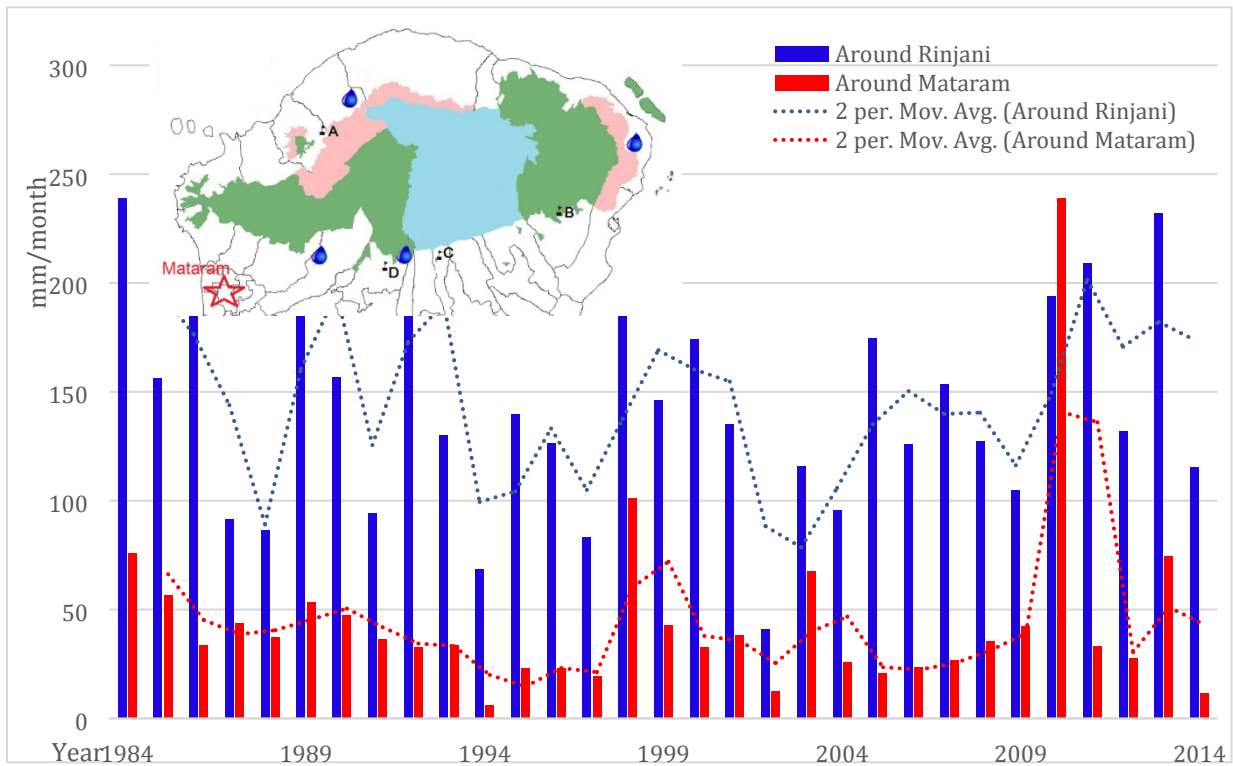


Figure 6: Precipitation records from 1984 to 2014 during dry season: average precipitation from four weather stations near the survey sites around Rinjani Mt and average of six weather stations around the City of Mataram, Lombok, Indonesia (Source: Information Board of Water Resources Province of NTB , 2016)

Table 1: Historical Land Use Changes in Lombok (Source: Bae at al. 2014)

Land Use Class	Area (Ha)				Changes 1995-2000	Changes 2000-2005	Changes 2005-2010
	1995	2000	2005	2010			
Primary forest	54,881	53,140	51,114	51,111	-1,741	-2,025	-4
Secondary forest	105,064	77,452	69,752	67,258	-27,612	-7,700	-2,494
Shrubland	12,767	33,627	42,052	34,419	20,859	8,425	-7,633
All other uses	285,495	293,989	295,289	305,419	8,494	1,300	10,131

Table 2: Carbon stock by land use type (metric ton of carbon/ha \pm standard deviation) (Source: Bae at al. 2014)

	Total	Living vegetation			Dead trees	Litters	Soils	
		Aboveground						
		Sub-total	Tree	Under growth				Below Ground
Primary forest	206.6 (± 76.66)	109.9	108.6 (± 59.89)	1.3 (± 1.15)	29.7 (± 16.12)	18.3 (± 26.05)	1.7 (± 1.25)	47.0 (± 17.52)
Secondary forest	181.1 (± 120.88)	97.8	96.2 (± 85.74)	1.6 (± 0.99)	26.4 (± 23.03)	21.4 (± 31.73)	1.8 (± 0.84)	33.7 (± 13.08)
Shrub land	75.3 (± 6.74)	26.5	24.8 (± 2.30)	1.7 (± 0.98)	7.2 (± 0.89)	16.7 (± 6.76)	1.6 (± 0.43)	23.4 (± 3.72)

Table 3: Forest Classification and Permitted Activities (Source: Rosenbarger et al. 2013¹)

Forest classification by function	Permitted activities ²				
	Timber Extraction	Cultivating medicinal/decorative plants, fungi, apiculture, swiftlet nests, capturing wildlife, cattle feed	Utilization of environmental services (water flow, ecotourism, biodiversity, environmental protection, carbon absorption and storage)	Extraction of non-timber forest products (rattan, bamboo, honey, resin, fruits, fungi)	Research, science, education, cultivation activities, cultural activities, and limited tourism
Production Forest (A)	Y ³	Y	Y	Y	Y
Protection Forest (B, D ⁴)		Y	Y	Y	Y
Conservation Forest (C)		Y ⁵		Y ⁵	Y

¹ Compiled from: Government Regulation No. 6 of 2007, Minister of Forestry Regulation No. 13 of 2009, Minister of Forestry Regulation No. 37 of 2007, Minister of Forestry Regulation No. 49 of 2008.

² These activities can be legally allowed with permits granted by regent/mayor/governor or minister (depending on area jurisdictions). Although these activities reflect *de facto* uses, two communities in the study area (A and B) do not hold permits.

³ There is no timber concession in the study area.

⁴ The “Community Forest” status of community D means that the forest utilization permit (IUPHKm) was granted to this community for a period of 35 years.

⁵ These activities are not allowed in Conservation Forest, but the community C is in “Traditional Zone”, specially designated for very limited community uses for their livelihood, including cattle feed.

Table 4: Potential Land Use Changes under the Business-As-Usual Scenario (ha)

Land Use Class	Present	In 10 years	In 30 years
Primary forest	51,111	51,111	51,111
Secondary forest	67,258	65,462	60,537
Shrubland	34,419	29,030	14,255
All other land uses	305,419	312,604	332,304

Table 5: Potential Land Use Changes under the Community Partnership Scenario (ha)

Land Use Class	Present	In 10 years	In 30 years
Primary forest	51,111	51,111	51,111
Secondary forest	67,258	89,522	105,064
Shrubland	34,419	33,675	12,767
All other land uses	305,419	283,899	289,265

Table 6: Potential Land Use Changes under the Forest Restoration Scenario (ha)

Land Use Class	Present	In 10 years	In 30 years
Primary forest	51,111	52,996	54,881
Secondary forest	67,258	89,522	105,064
Shrubland	34,419	33,675	12,767
All other land uses	305,419	282,014	285,495

Table 7: Land use and Carbon stock change under CP and FR scenarios

Land Use Class	Carbon Stock (metric ton /ha)	Community Partnership scenario (change from BAU) (ha)		Forest Restoration scenario (change from BAU) (ha)	
		in 10 years	in 30 years	in 10 years	in 30 years
Primary forest	206.6	0	0	1,885	3770
Secondary forest	181.1	24,060	44,527	24,060	44,527
Shrubland	75.3	4,645	-1,488	4,645	-1,488
All other land uses	23.4	-28,705	-43,039	-30,590	-46,809
Total carbon stock change (metric tCO ₂ e)		4,035,338	6,944,681	4,380,670	7,635,345

Table 8: Potential Undiscounted Total Market Values of Forest-sequestered Carbon in Lombok (USD millions).

Carbon Price (USD/ metric tCO ₂ e)	Carbon Value (in USD millions)			
	Community Partnership		Forest Restoration	
	10-year	30-year	10-year	30-year
\$5	20.18	34.72	21.90	38.18
\$7.50	30.27	52.09	32.86	57.27
\$10	40.35	69.45	43.81	76.35

Table 9: Level of use (% of respondents reporting collection from forests) and value of forest ESs (USD/household/yr)

Type of service	Forest ESs ¹	Production forest (A)		Protection forest (B)		Conservation forest (C)		Community forest (D)		All forests			
		%	Value	%	Value	%	Value	%	Value	%	Value	Consumed	Sold
Natural NTFP	Bamboo	2	18.52	18	13.35	6	4.23	26	11.25	13	10.83	51	49
	Forage	5	31.11	15	39.21	58	44.39	10	26.67	22	40.49	91	9
	Fern	49	4.22	4	1.63	69	1.48	13	5.04	34	2.86	83	17
	Sub-total	50	8.41	32	20.21	81	27.14	33	14.37	49	18.18		
Planted NTFP	Jackfruit	13	2.79	86	4.23	49	2.47	34	3.31	46	3.47	88	12
	Durian	33	74.80	7	38.27	8	16.89	13	81.63	16	66.46	60	40
	Avocado	17	8.63	29	18.45	43	5.42	3	18.04	23	10.20	44	56
	Mangosteen	3	18.89	0	0.00	0	0.00	1	18.52	1	18.80	44	56
	Melinjo	3	1.44	13	2.55	0	0.00	0	0.00	4	2.31	94	6
	Cacao	28	15.99	14	9.94	0	0.00	0	0.00	11	13.74	8	92
	Coffee	67	262.39	24	50.40	0	0.00	35	63.82	32	171.94	50	50
	Banana	56	14.95	82	15.01	0	0.00	23	13.66	42	14.89	36	64
	Taro	2	14.07	2	2.93	0	0.00	3	4.19	2	7.27	83	17
	Palm	0	0.00	0	0.00	0	0.00	6	918.52	1	918.52	17	83
	Candlenut	0	0.00	16	15.75	5	16.44	3	7.03	6	14.87	31	69
	Other NTFP	0	0.00	18	117.18	1	6.73	1	13.46	5	117.45	76	24
	Sub-total	84	142.86	96	49.04	57	14.15	40	103.89	69	77.70		
	Timber products	Fuelwood	35	7.17	80	3.59	36	2.99	35	5.92	48	4.56	87
Tools		4	0.74	0	0.00	0	0.00	1	1.85	1	0.96	100	0
Sub-total		37	6.66	79	3.59	37	2.99	34	5.40	47	4.41		
All forest ESs²		86	141.49	98	84.98	81	46.25	53	115.63	80	93.46		

¹ No uses were reported for some NTFPs (e.g. langsat, and rattan) and timber products (materials for building and fencing).

² Total % of respondents whose household obtained some values from forest ESs; Mean aggregate value of services obtained from the forest (USD/household/yr).

Table 10: Importance of local forest ESs in future forest management plans by study location

Forest service	Production forest	Protection forest	Conservation forest	Community forest	All respondents
	% of respondents stating that forest service was important				
Natural non-timber forest products	44	26	67	24	40
Planted non-timber forest products	92	70	1	86	81
Timber forest products	78	10	1	17	27
Water regulation	96	90	88	90	91

Table 11: Aggregate value of locally provided forest ESs

	Value per year (USD/Household) 1	Number of affected Households ²	Value per year (million USD)	Undiscounted value over 30 years ³ (million USD)
Production forest	\$121	44,104	\$6.2	\$187
Protection forest	\$83-\$61	84,311	\$7.2-\$9.7	\$241-\$292
Conservation forest	\$38	61,044	\$2.8	\$85
Total		189,460	\$16.2-\$18.8	\$486-\$564

¹ \$121 for Production Forest (\$141 for 86% of the community utilizing forest products); \$83 for Protection Forests (\$85 for 98% of the community utilizing forest products) and \$61 for Community Forests in Protection Forest (\$115 for 53% of the community utilizing forest products) and \$38 for Conservation Forest (\$46 for 81% of the community utilizing forest products)

² Aggregated population of sub-districts near each designated forest function X 51.5% with agriculture as the main occupation based on 2010 population.

³ Not accounting for population growth/discounting rate/forest product value change.

Table 12: Changes in value of locally provided forest ESs

	Undiscounted value over 30 years ³ (million USD)	CP scenario ¹		FR scenario ²	
		Forest area changes (%)	Changes in values (million USD)	Forest area changes (%)	Changes in values (million USD)
Production forest	\$187	7.52	\$14.1	8.20	\$15.3
Protection forest	\$241-\$292	18.05	\$43.5-52.5	19.68	\$47.4-57.5
Conservation forest	\$85	12.03	\$10.2	13.12	\$11.2
Total	\$486-\$564	37.6	\$67.8-76.8	41	\$73.9-84.0

¹ 44,527 ha or 37.6% increase in total forest area

² 48,297 ha or 41% increase in total forest area