



## Aberystwyth University

### *Surface velocity fluctuations for Glaciar Universidad, central Chile, between 1967 and 2015*

Wilson, Ryan; Mernild, Sebastian H.; Malmros, Jeppe K.; Bravo, Claudio; Carrión, Daniela

*Published in:*  
Journal of Glaciology

*DOI:*  
[10.1017/jog.2016.73](https://doi.org/10.1017/jog.2016.73)

*Publication date:*  
2016

*Citation for published version (APA):*

Wilson, R., Mernild, S. H., Malmros, J. K., Bravo, C., & Carrión, D. (2016). Surface velocity fluctuations for Glaciar Universidad, central Chile, between 1967 and 2015. *Journal of Glaciology*, 62(235), 847-860. <https://doi.org/10.1017/jog.2016.73>

#### **Document License** CC BY

#### **General rights**

Copyright and moral rights for the publications made accessible in the Aberystwyth Research Portal (the Institutional Repository) are retained by the authors and/or other copyright owners and it is a condition of accessing publications that users recognise and abide by the legal requirements associated with these rights.

- Users may download and print one copy of any publication from the Aberystwyth Research Portal for the purpose of private study or research.
- You may not further distribute the material or use it for any profit-making activity or commercial gain
- You may freely distribute the URL identifying the publication in the Aberystwyth Research Portal

#### **Take down policy**

If you believe that this document breaches copyright please contact us providing details, and we will remove access to the work immediately and investigate your claim.

tel: +44 1970 62 2400  
email: [is@aber.ac.uk](mailto:is@aber.ac.uk)

# Journal of Glaciology

<http://journals.cambridge.org/JOG>

Additional services for *Journal of Glaciology*:

Email alerts: [Click here](#)

Subscriptions: [Click here](#)

Commercial reprints: [Click here](#)

Terms of use : [Click here](#)

---

## Surface velocity fluctuations for Glaciar Universidad, central Chile, between 1967 and 2015

RYAN WILSON, SEBASTIAN H. MERNILD, JEPPE K. MALMROS, CLAUDIO BRAVO and DANIELA CARRIÓN

Journal of Glaciology / *FirstView* Article / July 2016, pp 1 - 14

DOI: 10.1017/jog.2016.73, Published online: 13 July 2016

Link to this article: [http://journals.cambridge.org/abstract\\_S0022143016000733](http://journals.cambridge.org/abstract_S0022143016000733)

### How to cite this article:

RYAN WILSON, SEBASTIAN H. MERNILD, JEPPE K. MALMROS, CLAUDIO BRAVO and DANIELA CARRIÓN Surface velocity fluctuations for Glaciar Universidad, central Chile, between 1967 and 2015. Journal of Glaciology, Available on CJO 2016 doi:10.1017/jog.2016.73

Request Permissions : [Click here](#)

# Surface velocity fluctuations for Glaciar Universidad, central Chile, between 1967 and 2015

RYAN WILSON,<sup>1,2</sup> SEBASTIAN H. MERNILD,<sup>3,4</sup> JEPPE K. MALMROS,<sup>5</sup>  
CLAUDIO BRAVO,<sup>1</sup> DANIELA CARRIÓN<sup>1</sup>

<sup>1</sup>*Glaciology and Climate Change Laboratory, Center for Scientific Studies/Centro de Estudios Científicos (CECs), Valdivia, Chile*

<sup>2</sup>*Department of Geography and Earth Sciences, Aberystwyth University, Ceredigion, SY23 3DB, UK*

<sup>3</sup>*Antarctic and Sub-Antarctic Program, Universidad de Magallanes, Punta Arenas, Chile*

<sup>4</sup>*Faculty of Engineering and Science, Sogn og Fjordane University College, Sogndal, Norway*

<sup>5</sup>*Department of Geosciences and Natural Resource Management, University of Copenhagen, 1350 Copenhagen K., Denmark*

Correspondence: Ryan Wilson <[ryw3@aber.ac.uk](mailto:ryw3@aber.ac.uk)>

**ABSTRACT.** For the Andes Cordillera, where observed mass-balance records are sparse, long-term glacier velocity measurements potentially represent a useful tool for assessing glacier health. Utilising manual and automatic feature-tracking techniques applied to Corona, Landsat and ASTER satellite imagery, this paper presents surface velocity fluctuations for Glaciar Universidad between 1967 and 1969, and 1985 and 2015, the longest such time series available for the Andes Cordillera, outside Patagonia. This time series reveals an increase in the surface velocities of the main glacier trunk between 1967 and 1987 (~90%) followed by a deceleration between 1987 and 2015 (~80%), with ice velocities observed between 2014 and 2015 possibly representing a 48 a low. In response to the surface velocity fluctuations, the glacier front advanced between 1985 and 1992 (cumulative change of  $137 \pm 14$  m), and again to a lesser magnitude during the 1996–98 and 2004–08 periods. Although having exhibited possible surge behaviour during the 1940s, the synchrony of the glacier changes presented for Glaciar Universidad with those reported for nearby glaciers, suggests that this glacier is responding to climatic trends. If the above scenario is true, the results indicate a general pattern of increasingly negative glacier mass-balance conditions since the late 1980s.

**KEYWORDS:** climate change, glacier mapping, ice velocity, mountain glaciers, remote sensing

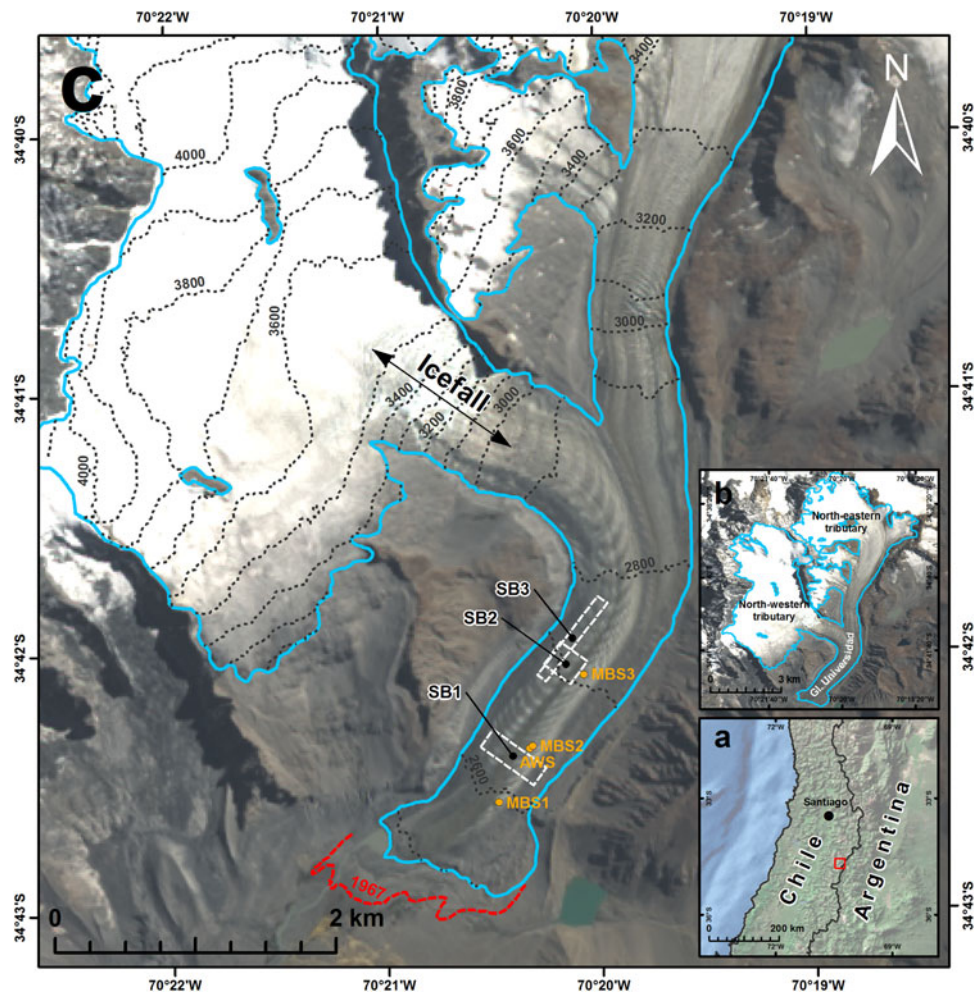
## 1. INTRODUCTION

In line with global trends (Mernild and others, 2013a), glaciers in South America have generally reduced in size since reaching their Little Ice Age maximums (~1850) (e.g. Georges 2004; Casassa and others, 2007; Rivera and others, 2007; Masiokas and others, 2008; Rabatel and others, 2011, 2013; Malmros and others, 2016). Such behaviour results from the predominance of negative glacier mass-balance conditions (e.g. Gardner and others, 2012; Mernild and others, 2013a) brought about by atmospheric warming and changes in precipitation patterns (e.g. Pellicciotti and others, 2007; Falvey and Garreaud, 2009).

In addition to initiating lagged responses in glacier length and area, changes in mass balance also influence ice surface velocities as a glacier redistributes ice mass in an attempt to reach a new equilibrium. When mass balance is negative, ice velocities should reduce, as a result of reductions in ice deformation (mainly due to changes in ice thickness) and upstream stresses (due to there being less ice mass to transport), and vice versa when it is positive (Cuffey and Paterson, 2010). This relationship was demonstrated by Vincent and others (2009), who recorded 20 a of thickening and velocity acceleration, followed by 30 a of thinning and velocity deceleration at Glacier d'Argentière, France. Long-term glacier velocity decreases observed in the Pamir and Caucasus mountains, Penny Ice Cap, Alaska Range, Patagonia and Southeast Greenland have

also been attributed to negative mass-balance conditions (Heid and Käab, 2012a; Mernild and others, 2013b).

However, the link between mass balance and ice velocity for some glaciers can be complicated by the influence of local topographic and climatic settings, subglacial hydrology and glacier surging behaviour, amongst other factors (Jobard and Dzikoski, 2006; Benn and others, 2007; Copland and others, 2011; Sundal and others, 2011). For the Patagonian icefields, for example, climate-induced mass loss has been enhanced when outlet glaciers have switched into retreat phases of individual tidewater calving cycles (Rivera and others, 2012). These retreat phases are initiated when tide-water or freshwater calving glacier fronts detach from local shallow pinning-points and recede rapidly into deep-water basins as a result of increased buoyancy and iceberg production (Post and others, 2011). Due to the subsequent reduction in resistive stresses at the glacier front, such phases are also accompanied by prolonged increases in glacier velocities (e.g. Upsala Glacier (49.70°S, 73.29°W); Mouginot and Rignot, 2015). There may also exist delays between mass balance and ice velocity fluctuations according to glacier size, bed slope and hypsometry (Oerlemans, 2008). Nevertheless, in the absence of detailed mass-balance records, ice velocity measurements acquired over long time periods can, in many cases, be a useful surrogate for assessing glacier health (long-term mass balance).



**Fig. 1.** Location and extent of Glaciar Universidad (highlighted in blue) in the central Chilean Andes (a, b, c). Ogive bands (consisting of alternate bands of dark and light ice) are shown flowing convexly down the main glacier trunk (c). These ogive bands are formed beneath the icefall, which intersects the North-western glacier tributary (c). The ice surface velocity (SB1 and SB2) and ogive width (SB3) sample boxes are marked by dashed boxes, while the location of the mass-balance stake (MBS, 1, 2 and 3) and AWS dGPS survey points (as of March 2009) are marked in orange (c). Background image: Landsat 8, 1 March 2015.

For South America, long-term glaciological mass-balance observations are spatially sparse, being limited to 22 glaciers and spanning the period 1976 to present (Mernild and others, 2015). To compensate for such under sampling, multi-temporal satellite data have been increasingly utilised to measure mass loss (e.g. Rignot and others, 2003; Gardner and others, 2012; Willis and others, 2012) and more prominently map glacier area and length fluctuations (e.g. Bown and others, 2008; Davies and Glasser, 2012; López-Moreno and others, 2014; Paul and Mölg, 2014; White and Copland, 2015). In comparison with the above analyses, long-term glacier velocity records are particularly sparse, being limited almost exclusively to the Patagonian Icefields. Using automated feature-tracking methodologies and repeat pass satellite imagery, a number of studies have now presented detailed glacier velocity and frontal position times series for the Patagonia Icefields revealing large inter-related annual fluctuations between 1984 and 2014 (e.g. Muto and Furuya, 2013; Sakakibara and Sugiyama, 2014; Mouginot and Rignot, 2015).

North of the Patagonian Icefields (located between  $46^{\circ}40'$  and  $51^{\circ}60'S$ ), the long-term fluctuation in velocities for glaciers of the Andes Cordillera is relatively unknown, being limited to a small number of in-situ stake measurements made as part of on-going mass-balance programs (as reported

in Gacitúa and others (2015)). In regards to satellite-based observations, this lack of glacier surface velocity measurements in the southern, central and northern Andes can be attributed to (1) the comparatively smaller size of the glaciers and (2) the slow movement of many of the glaciers. The main outlet glaciers of the Northern and Southern Patagonia icefields, for example, have an average size of  $\sim 33 \text{ km}^2$  (taken from the Randolph Glacier Inventory v.5.0 (RGI); [http://www.glims.org/RGI/rgi50\\_dl.html](http://www.glims.org/RGI/rgi50_dl.html)) and can reach speeds  $>3 \text{ km a}^{-1}$  (Mouginot and Rignot, 2015). In comparison, South American glaciers north of  $46^{\circ}40'S$ , have an average size  $>1 \text{ km}^2$  (RGI v.5.0) and have been reported as flowing  $<3 \text{ m a}^{-1}$  (e.g. Glaciar Olivares Alfa ( $33^{\circ}11'S$ ,  $70^{\circ}13'W$ ); Gacitúa and others, 2015). Both the aforementioned points hinder the ability of automated feature tracking techniques to distinguish ice surface features from widely used medium resolution repeat pass satellite datasets (e.g. Landsat and Advanced Spaceborne Thermal Emission and Reflection Radiometer (ASTER) data: 15–30 m resolution).

Located in the central Chilean Andes, Glaciar Universidad ( $34.69^{\circ}S$ ,  $70.33^{\circ}W$ ) is distinguishable from other glaciers in South America by (1) its relatively large size (estimated in this study to be  $28.1 \text{ km}^2$  as of 2015) and (2) the presence of band ogives on its surface (Fig. 1), which are discussed in Section 1.1. Utilising the movements of these band



ogives, the aim of this study is to examine surface velocity fluctuations for Glaciar Universidad on an almost annual frequency between 1985 and 2015. This is achieved through the use of an automated feature tracking procedure applied to Landsat and ASTER satellite image pairs. The velocity observations were extended further through the manual analysis of declassified Corona reconnaissance imagery acquired in 1967 and 1969. Together, the Corona, Landsat and ASTER derived glacier velocities presented in this study represent the longest ice surface velocity time series currently available in South America, outside Patagonia. In addition to estimating ice surface velocity, the satellite data presented are used to map (1) frontal fluctuations and (2) temporal variations in the longitudinal width of surface ogive bands. The ogive analysis was performed in order to test the hypothesis that during periods of increased glacier velocities newly formed ogive bands should be wider. This hypothesis would support the ogive formation theory put forward by Nye (1958) (Section 1.1).

### 1.1. Formation of band ogives

Forming below steep icefalls on some glaciers, band ogives consist of alternating bands of dark and light ice. These alternating bands flow convexly down-glacier giving the surface of glacier ablation zones a striped appearance. The exact formation mechanisms of ogives are yet to be fully understood and currently several theories exist (discussed in detail by Leighton (1951) and Goodsell and others (2002)). One theory, proposed by Nye (1958), suggests that dark and light ogive bands are the result of the seasonal preferences in debris and snow acquisition of ice passing through icefalls. According to this theory, dark ice bands are formed during summer when heightened ablation of the stretched and fractured ice flowing down icefalls allows for the collection of more wind-blown debris. In contrast, light bands are formed during winter when excess snow collected in the large crevasses of icefalls is transported down-glacier. In this instance, a single ogive comprising a dark and light band is formed each glaciological year (central Chile: 1 April–31 March). According to this theory, ogive surface geometry would then be dependent on the ice surface velocity of the previous year.

An alternative ogive formation theory, proposed by Goodsell and others (2002), suggests that ogives are the surface expression of shear planes. According to this theory, the rhythmic compression of flow at the base of icefalls results in zones of enhanced shearing along which basal ice and debris is uplifted to the surface via folding. These zones are subsequently characterised by areas of particularly dense foliation, which represent the dark ogive bands. This theory of ogive formation is supported by the 'reverse faulting' theory proposed by Posamentier (1978).

As indicators of glacier surface flow, band ogives are a useful feature for measuring ice velocities. The first detailed description of Glaciar Universidad and its ogive formations was published by Lliboutry (1958). Through observing the movements of the ogive features, Lliboutry (1958), for example, estimated that ice velocities for the central portion of the glacier were  $\sim 50 \text{ m a}^{-1}$  in 1956, assuming that when flows are steady the distance between two band ogives gives the annual velocity.

## 2. DATA AND METHODS

Surface glacier velocity, frontal margin and ogive width analysis were performed with the use of two declassified Corona

reconnaissance images, 33 Landsat 5 (Thematic Mapper) images, three Landsat 7 (Enhanced Thematic Mapper Plus) images, ten ASTER images and four Landsat 8 (Operational Land Imager) images acquired between 1967 and 2015 (Table 1). Where possible, images were chosen on the basis that they were cloud free, included minimum snow cover (typically at the end of the ablation season in February and March) and were acquired 1 a apart. Between 1999 and 2015, suitable imagery (medium resolution and cost effective) was available from the Landsat 5, Landsat 7, ASTER and Landsat 8 satellite archive. For the 2002 and 2003 observation periods, the Landsat 7 30 m sensor imagery was chosen over the 15 m panchromatic imagery available in order to (1) match with the resolution of the Landsat 5 imagery used and (2) limit CIAS (Correlation Image Analysis Software) bias introduced by comparing velocities obtained from image pairs of differing resolution. After 2003, the Landsat 7 image archive was not considered due to the failure of the sensors Scan Line Corrector (SLC). From 2013, the 15 m resolution Landsat 8 panchromatic imagery was preferred due to its improved geometric accuracy (Storey and others, 2014). For the surface velocity analysis, imagery was also chosen based on the performance of the feature tracking procedure (Section 2.1).

### 2.1. Surface velocity estimation

Glacier surface velocity fluctuations were estimated through the use of a feature tracking procedure based on automatic matching of image pairs. Several feature tracking or image matching techniques have been applied in earlier glaciological studies, including normalized cross correlation, Fourier cross correlation, least squares matching, phase correlation and orientation correlation (Kääb, 2005; Heid and Kääb, 2012b). Here, glacier velocity was estimated using the CIAS algorithm, which measures the displacement of surface features captured in overlapping satellite image pairs through Normalized Cross-Correlation (NCC) (Kääb and Volmer, 2000; Heid and Kääb, 2012b). CIAS was chosen in this study due to its operational simplicity and good performance on glaciers with high-visual contrast (Heid and Kääb, 2012b).

NCC obtains a velocity measurement by systematically correlating a block of pixel values sampled from an initial reference image (first epoch) to pixel values contained within a larger search window area contained in an overlapping image (second epoch). Horizontal displacements and flow directions are then automatically calculated by comparing the centre location of the highest block correlation, found inside a search window, with that of the initial block. In this case, after testing the effect of window size variation on the frequency of displacement errors produced, it was found that a block and search window of  $10 \times 10$  pixels and  $25 \times 25$  pixels, respectively, performed consistently well for all image pairs used. Once generated, ice surface displacement errors were removed using (1) magnitude and flow direction filters, which eliminated velocity points that were abnormally high and did not adhere to the flow direction of the main glacier trunk, (2) CIAS-derived point correlation coefficients (deleting points  $< 0.6$ ) and (3) manual editing. To allow for cross comparisons, the remaining displacement points were scaled to annual velocities before being converted into  $50 \text{ m} \times 50 \text{ m}$  raster grids for analysis.

**Table 1.** Satellite imagery used to derive ice velocities and map glacier front positions and ogive width variations

Sensor	Resolution m	Image pair date dd/mm/yyyy	Utility	Source
Corona KH4A/KH4B	2.75/1.8	23/02/1967–10/12/1969	IV, FM, OW	USGS
Landsat 5	30	30/03/1985–22/02/1986	IV, FM	USGS
Landsat 5	30	22/02/1986–25/02/1987	IV, FM, OW	USGS
Landsat 5	30	25/02/1987–15/03/1988	IV, FM, OW	USGS
Landsat 5	30	15/03/1988–17/03/1989	IV, FM, OW	USGS
Landsat 5	30	17/03/1989–01/02/1990	IV, FM, OW	USGS
Landsat 5	30	01/02/1990–20/02/1991	IV, FM, OW	USGS
Landsat 5	30	20/02/1991–10/03/1992	IV, FM, OW	USGS
Landsat 5	30	10/03/1992–29/03/1993	IV, FM, OW	USGS
Landsat 5	30	29/03/1993–12/02/1994	IV, FM, OW	USGS
Landsat 5	30	12/02/1994–19/03/1995	IV, FM, OW	USGS
Landsat 5	30	19/03/1995–21/03/1996	IV, FM, OW	USGS
Landsat 5	30	21/03/1996–03/01/1997	IV, FM, OW	USGS
Landsat 5	30	03/01/1997–29/11/1998	IV, FM, OW	USGS
Landsat 5	30	29/11/1998–28/01/2000	IV, FM, OW	USGS
Landsat 5	30	28/01/2000–10/03/2001	IV, FM, OW	USGS
Landsat 5/7	30/15	10/03/2001–01/02/2002	IV, FM, OW	USGS
Landsat 7	30/15	01/02/2002–20/02/2003	IV, FM, OW	USGS
ASTER	15	09/04/2003–23/02/2004	IV, FM, OW	NASA REVERB
ASTER	15	23/02/2004–02/02/2005	IV, FM, OW	NASA REVERB
Landsat 5	30	05/03/2005–08/03/2006	IV	USGS
ASTER	15	02/02/2005–21/02/2006	FM, OW	NASA REVERB
ASTER	15	21/02/2006–24/02/2007	IV, FM, OW	NASA REVERB
ASTER	15	24/02/2007–01/01/2008	IV, FM, OW	NASA REVERB
ASTER	15	01/01/2008–12/01/2009	IV, FM, OW	NASA REVERB
ASTER	15	12/01/2009–27/03/2010	IV, FM, OW	NASA REVERB
Landsat 5	30	28/03/2010–02/02/2011	IV	USGS
ASTER	15	27/03/2010–07/03/2011	FM, OW	NASA REVERB
ASTER	15	07/03/2011–11/12/2011	IV, FM, OW	NASA REVERB
ASTER	15	11/12/2011–03/03/2013	IV, FM, OW	NASA REVERB
Landsat 8	15	21/04/2013–10/02/2014	IV, FM, OW	USGS
Landsat 8	15	10/02/2014–01/03/2015	IV, FM, OW	USGS

For the 2001/02 and 2002/03 observation period, the Landsat 7 15 m panchromatic imagery was used to map ogive widths and frontal margins. IV, ice velocity; FM, frontal margin; OW, ogive width.

When suitable image pairs were available from different sensors, velocity points were chosen for analysis based on the spatial distribution of successful points post error removal.

Due to their differing resolution, image quality and geometric distortions, CIAS was unable to estimate glacier velocity from Corona imagery. For the two Corona images used here a manual approach was applied, whereby distinguishable ice surface features were manually identified in each image and their displacement measured using standard GIS tools. Prior to measuring feature displacement, the Corona images needed to be orthorectified into a common WGS84 Universal Transversal Mercator (UTM) map projection. Following a similar method to that of Galitsatos and others (2008), this procedure was performed using a non-metric camera model included within the Erdas Imagine Photogrammetry software module. Horizontal and vertical ground control points (GCPS) were manually obtained for the model from Landsat 8 15 m panchromatic imagery (acquired on the 10 January 2014) and the SRTM v.4.1 global DEM. The resulting horizontal RMSE for the Corona images equated to  $\pm 12$  m.

In order to aid interpretation, the resulting glacier velocity points for each time period were extracted (1) along a longitudinal profile (positioned in relation to ogive visibility) and (2) in two sample boxes (SB1 and SB2) located between 2630–36 and 2700–20 m a.s.l., respectively (Fig. 1). Velocity points contained within the two sample boxes

were then averaged for each time period. The two sample box locations were chosen where there was the greatest frequency of filtered velocity points in all 30 observations pairs.

## 2.2. Glacier frontal change and ogive width estimation

Fluctuations in the frontal position of Glaciar Universidad were calculated by manually measuring the difference in the location of terminus positions along a single polyline, following the central flow line, between each image in the 31 observation pairs (shown in Table 3). Additionally, the longitudinal width of individual ogive bands present along the central line of a third sample box (SB3; Fig. 1) were also manually measured for each separate image and then averaged (Table 2). The presence of debris cover within SB3 in the 1985 and 1986 images meant that ogive widths could not be measured. Overall, the number of individual ogive bands measured within SB3 ranged from 3 (1990–2000) to 7 (1967 and 2015) (Table 2). SB3 was located as close as possible to the icefall intersecting the main glacier trunk from its north-western tributary in order to measure the most recently formed ogive bands. However, this positioning was limited by the presence of snow cover close to the bottom of the icefall in the majority of the images acquired. For both the glacier front and ogive band measurements, the ASTER image pairs available for the 2005/06 and 2010/11 observations periods were preferred over the Landsat 5 alternatives

**Table 2.** The number and average width of individual ogive bands (consisting of a dark and light band) mapped longitudinally along the centre line of SB3

Year	Number of ogives	Average ogive width m	Mapping error ±m
1967	7	99	7
1969	5	106	4
1987	4	165	60
1988	3	180	52
1989	4	182	60
1990	3	201	52
1991	3	216	52
1992	3	221	52
1993	3	221	52
1994	3	218	52
1995	3	224	52
1996	3	213	52
1997	3	198	52
1998	3	190	52
2000	3	177	52
2001	4	165	60
2002	4	165	30
2003	4	140	30
2004	5	132	34
2005	5	124	34
2006	5	122	34
2007	5	118	34
2008	5	121	34
2009	5	120	34
2010	5	112	34
2011	5	107	34
2012	6	106	37
2013	6	106	37
2014	6	94	37
2015	7	88	40

due to their higher spatial resolution (Table 1). For the same reason, the 15 m Landsat 7 panchromatic imagery was used to measure these two variables in 2002 and 2003.

### 2.3. Error and bias

#### 2.3.1. Ice surface velocity error

For the Landsat 5, Landsat 7, Landsat 8 and ASTER derived glacier velocities, two main factors determined relative accuracy: (1) image co-registration accuracy; and (2) NCC image matching accuracy. In order to measure the first of these factors, each of the image pairs used were co-registered prior to image matching using a Helmert transformation, based on 50 GCPs sampled on stable terrain features located in close proximity to Glaciar Universidad. In this instance, error was taken from the RMSE of any horizontal image displacements. The accuracy of the NCC procedure was assessed through the RMSE calculation of 1000 non-glacier displacement points surrounding Glaciar Universidad in each of the image pair datasets. Error associated with each individual velocity image pair was then quantified through combining both the aforementioned RMSEs via error propagation. A summary of these errors for each of the satellite sensors used is given in Table 3. As NCC image matching was not performed for the Corona image pair, velocity accuracy in this case was based solely on image co-registration. Once orthorectified, the Corona image pair's co-registration RMSE was calculated using the

horizontal displacements of 50 corresponding tie points (Table 3).

The availability of repeat differential GPS points (with horizontal accuracies of  $\sim 0.1$  m), surveyed on three mass-balance stakes and one weather station located along the main glacier trunk (Fig. 1) between March 2009 and April 2010, allowed for an assessment of absolute error through comparison with the 2009/10 ASTER derived velocity dataset (Table 4). To perform this comparison, velocity measurements from the 2009/10 ASTER dataset were averaged within a 50 m radius of each of the 4 initial dGPS survey points. After scaling the measurements into annual velocities, the dGPS derived displacements were found to be consistently higher than the ASTER velocity measurements (+26%) with an RMSE equating to  $16.2 \text{ m a}^{-1}$  (Table 4). This absolute error matches similar comparisons made by other glaciological studies (e.g. Frezzotti and others, 1998; Redpath and others, 2013) and, relative to the magnitude of the velocities shown for Glaciar Universidad, is considered to be small.

One possible source of velocity bias that is not accounted for in this study is the effect of the differing temporal separations of the image pairs used. Although images were ideally acquired on an annual basis, captured at the end of the ablation season, these criteria were sometimes not met and the temporal separation of image pairs used ranged from 1021 (Corona) to 279 (ASTER) days. However, without knowledge of the interannual variations of ice velocities at Glaciar Universidad, the influence of temporal separation in this case was difficult to ascertain. Velocity bias may have also arisen from the cross comparison of velocities derived from satellite sensors with differing characteristics. Image matching techniques applied to Landsat and ASTER imagery, for example, have been found to be influenced, to varying degrees, by variations in sensor attitude (Heid and Käab, 2012b) and horizontal shifts brought about by orthorectification errors (Heid and 2012a). Although these sources of bias are not accounted for specifically in this study, the cross comparability of the velocities presented is assessed through the comparison of displacement points derived from different sensors for approximately the same time period. Here, sensor cross comparisons were made for Landsat 8 and ASTER (2013/14), and Landsat 5 and ASTER (2005/06; 2006/07; and 2010/11) (Table 5). These four comparisons were chosen based on image pair availability, successful velocity point distribution and temporal separation. Overall, the RMSEs attained for each cross comparison (derived from overlapping velocity points) were found to be similar, ranging from 8 to  $9.5 \text{ m a}^{-1}$ . Again, considering the magnitudes of the velocities shown for Glaciar Universidad, these cross sensor velocity differences are considered acceptable.

#### 2.3.2. Glacier frontal change and ogive widths

To calculate error in the frontal change measurements presented here, the method proposed by Williams and others (1997) and Hall and others (2003) was utilised. Error in the linear direction ( $d$ ) was therefore calculated using...

$$d = \sqrt{r_1^2 + r_2^2} + \text{RMSE} \quad (1)$$

where  $r_1$  represents the spatial resolution (pixel cell width) of the first image of an observation pair,  $r_2$  the spatial resolution of the second image and RMSE the image to image co-registration error. The resulting linear errors for frontal change

**Table 3.** Accuracy of the CIAS NCC-based feature tracking procedure assessed through the analysis of 1000 non-glacier displacements points calculated from each image pair observation date stated

Observation date	Sensor	Average displacement of stable terrain $\pm \text{m a}^{-1}$	Image co-registration error $\pm \text{m}$	Combined displacement error $\pm \text{m a}^{-1}$	Frontal change error $\pm \text{m}$
1967–69	Corona	–	8.0	8.0	11.3
1969–85	Corona/Landsat 5	–	30.0*	–	60.1
1985/86	Landsat 5	21.6	26.2	33.9	68.6
1986/87	Landsat 5	5.2	8.2	9.7	50.6
1987/88	Landsat 5	7.4	7.2	10.4	49.6
1988/89	Landsat 5	7.3	10.0	12.4	52.4
1989/90	Landsat 5	9.2	10.3	13.8	52.7
1990/91	Landsat 5	5.2	7.4	9.0	49.8
1991/92	Landsat 5	5.7	9.6	11.1	52.0
1992/93	Landsat 5	5.4	10.1	11.5	52.5
1993/94	Landsat 5	10.3	12.4	16.1	54.8
1994/95	Landsat 5	6.3	11.7	13.3	54.1
1995/96	Landsat 5	5.9	8.8	10.6	51.2
1996/97	Landsat 5	12.8	12.5	17.9	54.9
1997/98	Landsat 5	4.2	12.7	13.4	55.1
1998–2000	Landsat 5	6.3	12.6	14.1	55.0
2000/01	Landsat 5	7.1	10.2	12.4	52.6
2001/02	Landsat 5/7	7.9	9.2	12.1	42.7
2002/03	Landsat 7	6.6	9.5	11.6	30.7
2003/04	ASTER	10.0	14.0	17.2	35.2
2004/05	ASTER	12.1	14.2	18.7	35.4
2005/06	Landsat 5	9.6	12.3	15.6	–
2005/06	ASTER	9.2	14.4	17.1	35.6
2006/07	ASTER	7.3	8.6	11.3	29.8
2007/08	ASTER	12.3	12.5	17.6	33.7
2008/09	ASTER	8.9	14.1	16.7	35.3
2009/10	ASTER	8.8	17.1	19.2	38.3
2010/11	Landsat 5	13.5	12.1	18.1	–
2010/11	ASTER	11.5	10.3	15.4	31.5
2011/12	ASTER	14.0	13.6	19.5	34.8
2012/13	ASTER	8.3	12.8	15.2	34.0
2013/14	Landsat 8	8.2	8.3	11.7	29.5
2014/15	Landsat 8	3.1	4.1	5.1	25.3
	Average:	8.7	12.0	14.4	43.5

Also included is the estimated horizontal errors attributed to the frontal change measurements presented.

\* For the 1969–85 frontal change observation period, image co-registration (Corona to Landsat 5) was not performed. Therefore, a co-registration error of one Landsat 5 pixel was assumed.

measurements made from each observation pair are listed in Table 3. Error estimates presented for frontal change over a specified period (e.g. 1967–85) represent the average linear error of each observation pair included in that period.

For the ogive width measurements, a linear mapping error of one pixel was assumed for each ogive band measured within SB3. The total error attributed to the average ogive width measurements presented in Table 2 was then calculated via error propagation, depending on the number of ogive bands present within SB3 for a given year and the spatial resolution of the image used.

### 3. RESULTS

#### 3.1. Surface velocity fluctuations between 1967 and 2015

Figure 2 presents the longitudinal satellite-derived ice surface velocity profiles for each separate observation interval between 1967 and 2015. Surface velocities for the main trunk of Glaciar Universidad are shown to be at their highest close to the bottom of the icefall, which connects

the north-western tributary, before decreasing towards the ice terminus. In terms of annual surface velocity magnitude, Figures 2, 3 highlight four periods of transition for Glaciar Universidad. (1) Manual comparisons of ice surface features identified in Corona imagery acquired in 1967 and 1969 revealed average ice surface velocities of 91 and 134  $\text{m a}^{-1}$  for the SB1 and SB2, respectively. These values for the 1967–69 period were similar in magnitude to the velocities estimated between 1993 and 1997. However, between 1986 and 1987 (2), representing a period of increased ice surface velocities, average velocities estimated for the higher elevation SB2 had increased by 91% in comparison with 1967–69 estimates, reaching 256  $\text{m a}^{-1}$ . After reaching a possible peak between 1986 and 1987, average annual ice velocities for SB1 and SB2 then underwent an abrupt deceleration up to 1993 (3), reducing by 64 and 58%, respectively. The following 22 a were characterised by a general trend of deceleration with velocities reaching a minimum during the 2014/15 interval. However, this period is marked by two relatively minor ice surface velocity acceleration events, the first occurring between 1993 and 1997 and the second occurring between 2001 and 2008. (4) Between 2008 and



**Table 4.** Comparison of the 2009 with 2010 ASTER ice velocities, derived using the CIAS feature tracking algorithm, with mass-balance stake (MB1, 2, 3) and AWS repeat dGPS points surveyed over a similar period

Location	Start date dd/mm/yyyy	End date dd/mm/yyyy	Horizontal displacement $\text{m a}^{-1}$	Satellite derived horizontal displacement $\text{m a}^{-1}$	Difference $\text{m a}^{-1}$
MBS1	27/03/2009	21/11/2009	53.2	30.1	23.1
MBS2	28/03/2009	19/11/2009	59.3	54.0	5.3
MBS3	28/03/2009	08/05/2009	109.9	98.1	11.8
AWS	27/03/2009	14/04/2010	73.4	54.0	19.4
				RMSE	16.4

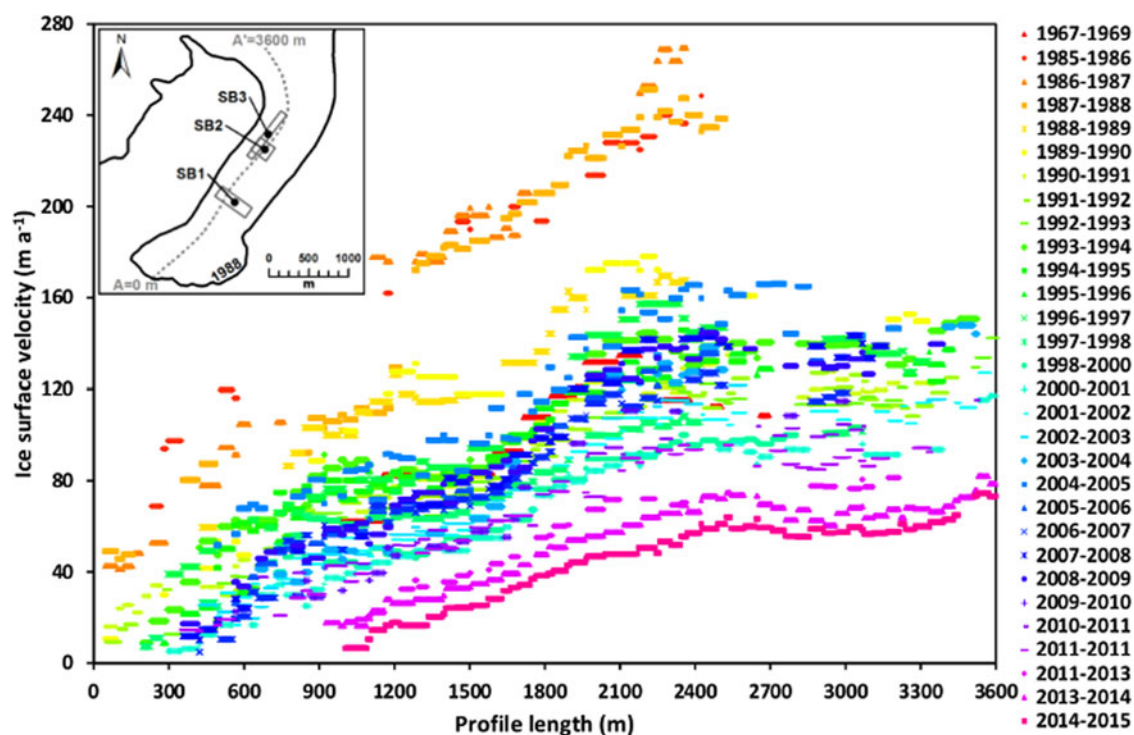
**Table 5.** Cross comparability of ice velocities derived from roughly same date Landsat 5, Landsat 8 and ASTER satellite image pairs using the CIAS feature tracking algorithm

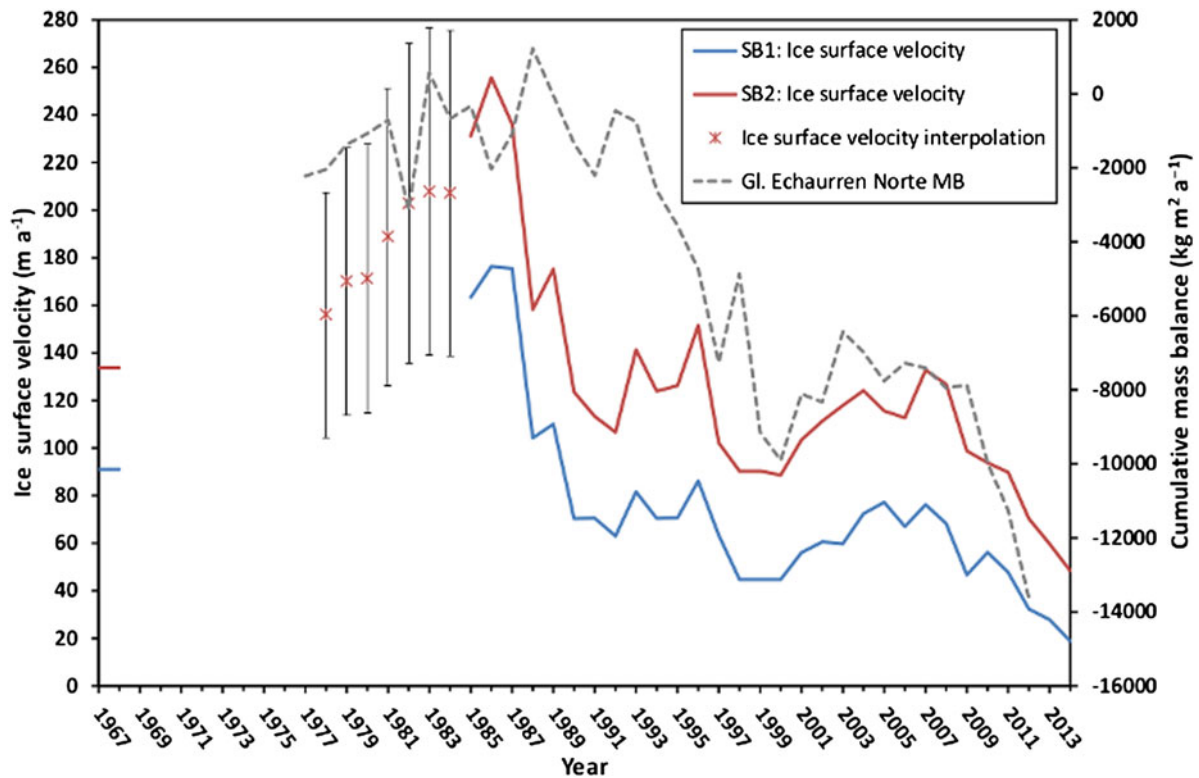
Comparison	Sensor comparison	Observation date dd/mm/yyyy	Temporal difference days	Ice surface velocity RMSE $\pm\text{m}$
1	Landsat 5 ASTER	25/01/2005–08/03/2006 02/02/2005–21/02/2006	23	9.2
2	Landsat 5 ASTER	08/03/2006–11/03/2007 21/02/2006–24/02/2007	0	8
3	Landsat 5 ASTER	28/03/2010–02/02/2011 27/03/2010–07/03/2011	34	9.5
4	Landsat 8 ASTER	21/04/2013–10/02/2014 03/03/2013–27/02/2014	66	8.7

2015, the rate of ice surface velocity deceleration then increases, with average values estimated within SB1 and SB2 reducing by 72 and 62%, respectively. Overall, the 2014/15 average ice velocities at SB1 and SB2 are shown to be 79 and 64% lower than estimated for the 1967–69 period, and 89% and 81% lower than the peak 1986/87 period, respectively. Considering Table 3, it is important to

note that only long-term surface velocity changes beyond estimated errors (average of  $\pm 14 \text{ m a}^{-1}$ ) are deemed significant.

In addition to reducing near the glacier terminus, by 2014/15 annual ice velocities have also reduced considerably towards the north-western icefall, resulting in a lowering of the longitudinal velocity gradient for the main glacier trunk.

**Fig. 2.** Ice surface velocities extracted along a longitudinal profile (see inset: A-A') of Glaciar Universidad between 1967 and 2015.



**Fig. 3.** Average ice surface velocity in SB1 and SB2 (location shown in Fig. 1) between 1967 and 2015. The ice surface velocity fluctuations measured for SB1 and SB2 show similarities with the mass-balance (MB) records available for Glaciar Echaurren Norte (1978–2012) located ~120 km north of Glaciar Universidad (sourced from the WGMS and Memild and others, 2015). Y-axis point labels represents first year of observation pair (e.g. 1990 = 1990/91). Note that the 1999 point represents the 29 November 1998–28 January 2000 observation pair, while the 2011 point represents the 7 March 2011–11 December 2011 observation pair. Applying the linear relationship between the average ogive width time series, which had been adjusted back in time by 8 a (SB3: 1995–2015), and the ice surface velocity (SB2: 1985–2007) time series (Fig. 7), ogive widths measured between 1987 and 1993, prior to time adjustment, were used to interpolate ice velocities between 1978 and 1985, extending the ice surface velocity time series for SB2 by 7 a. Error bars indicate the level of uncertainty included within the coefficient of determination stated in Figure 7 (33%).

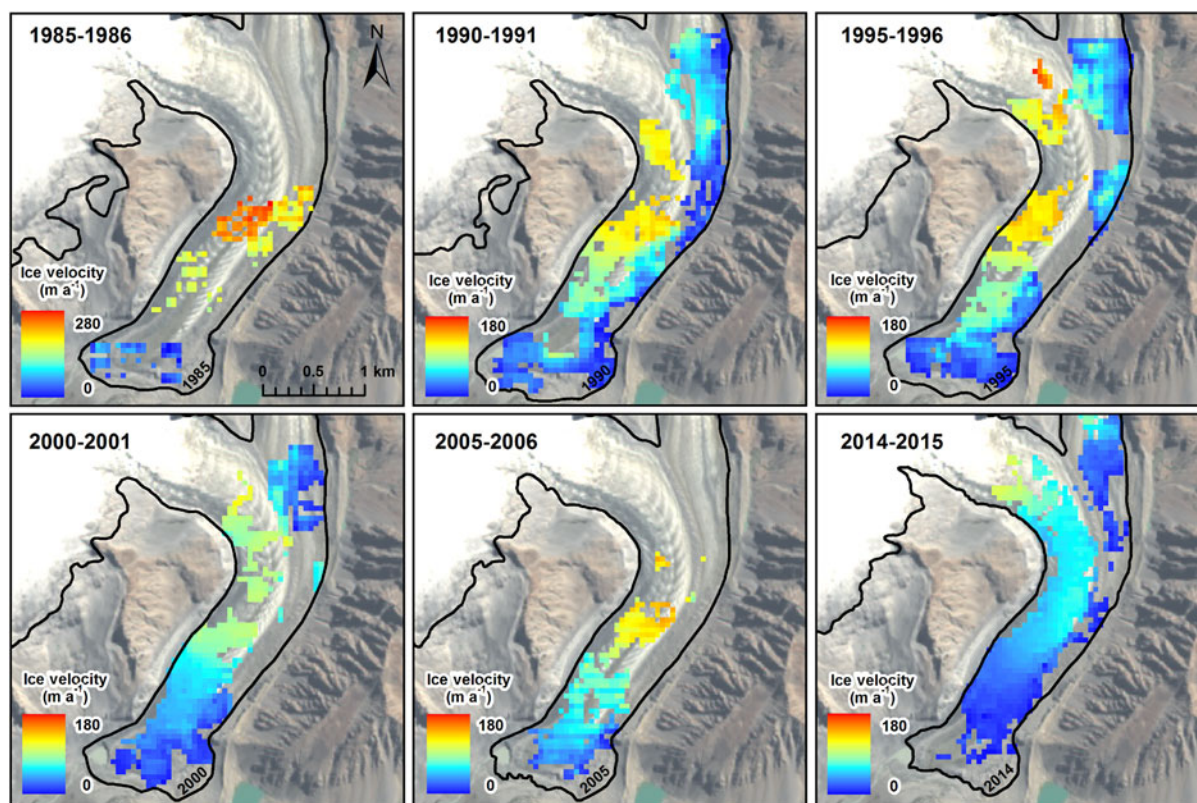
The spatial distribution of annual velocity magnitudes for selected dates between 1985 and 2015 is shown in Figure 4, highlighting the extent of aforementioned velocity reductions. In addition, Figure 4 reveals that the ice dynamics of the main glacier trunk are largely governed by the north-western tributary. The influence of the north-western tributary (Fig. 1) is delimited by a longitudinal central moraine originating at the convergence point of the north-western and north-eastern tributary (Fig. 5). Annual surface velocities for ice flows west of this moraine limit are consistently higher for all observation intervals and coincide with the location of the ogive features present on the surface of the main glacier trunk.

By tracking the temporal movements of surface moraines on Glaciar Universidad further information can be sought in regard to the characteristics of the ice surface velocity changes measured during the observation period. Most notably, despite being slower than the surface flow attributed to the north-western tributary, surface flows attributed to the north-eastern tributary may have also been increased during the 1985–88 period, indicated by the development of a bulge in the central moraine running along the main glacier trunk (see 1991 moraine map in Fig. 5). From 1991 onwards, the influence of the north-eastern tributary on the ice dynamics of the main glacier trunk is shown to continually diminish, marked by the gradual eastern migration of the main central moraine. By 2014/15, for example, ice flows from the north-eastern tributary are generally reduced to  $<15 \text{ m a}^{-1}$  at the convergence point with the north-western tributary.

### 3.2. Glacier front fluctuations and ogive widths between 1967 and 2015

A comparison of surface velocity and glacier front fluctuations for Glaciar Universidad revealed that the latter variable is fairly responsive to the former, with frontal fluctuations generally lagging behind surface velocity changes by 2 a. This frontal fluctuations lag is indicated by a peak cross correlation  $r^2$  value of 0.65 (Fig. 6). For example, after retreating by  $177 \pm 36 \text{ m}$  between 1967 and 1985, the glacier front advanced by  $147 \pm 18 \text{ m}$  between 1985 and 1988 corresponding closely to the period of increased surface velocities observed during 1985/86 and 1986/87. Following this event, two other minor periods of advance occurred between 1996–98 and 2004–08, these events matching periods of surface velocity increase observed between 1994–97 and 2000–05. Despite these periods of advance, frontal retreat has predominated since 1988, with the glacier reducing in length by a cumulative total of  $465 \pm 44 \text{ m}$  between 1967 and 2015.

Average ogive widths measured within SB3 are shown in Figure 7. Considering the ogive formation theory put forward by Nye (1958), it was expected that longitudinal ogive width would be larger when annual ice velocities were increased. Here, this relationship was complicated by the location of the ogive width SB3 ~1600–2300 m down-glacier of the formation zone at the icefall bottom. Consequently, ogive widths measured in SB3 for a given observation year likely



**Fig. 4.** Spatial distribution of selected ice surface velocity magnitudes. Note the larger ice surface velocity scale for the 1985/86 observation period.

indicate surface flow characteristics from previous years. Unfortunately, in this case the quantification of a precise ogive width lag time was hindered by the inability to track individual ogives close to the icefall, as this area was often covered in snow. In order to obtain a first order approximation of the relationship between ogive width and ice surface velocity, an 8 a lag was therefore assumed by matching the 1986/87 surface velocity peak to the ogive width peak observed for 1995. A subsequent Pearson's correlation between the adjusted ogive width time series and the corresponding ice surface velocity time series measured at SB2 (1985/86 to 2006/07) showed a significant  $r^2$  value of 0.67 (explaining 67% of the variance) ( $p < 0.05$ ; where  $p$  is the level of significance) (Fig. 7). To perform this correlation, firstly, surface velocities for both the 1997/98 and 1998/99 time periods were assumed to be  $102 \text{ m a}^{-1}$ . This initial assumption was made with reference to the annual ice surface velocity estimated for the 3 January 1997–29 November 1998 observation period. Secondly, once adjusted, surface velocity and average ogive width data for the 1990/91 time period were withdrawn due to ogive width measurements not being available for the non-adjusted 1999 data point.

Using the 8 a time adjustment there was then an opportunity to estimate ice velocities between 1978 and 1984 through the application of a simple linear regression model (see interpolation data presented in Fig. 3). The resulting ice surface velocity interpolations suggest that the 1986/87 period represents the peak of a period of ice surface velocity acceleration.

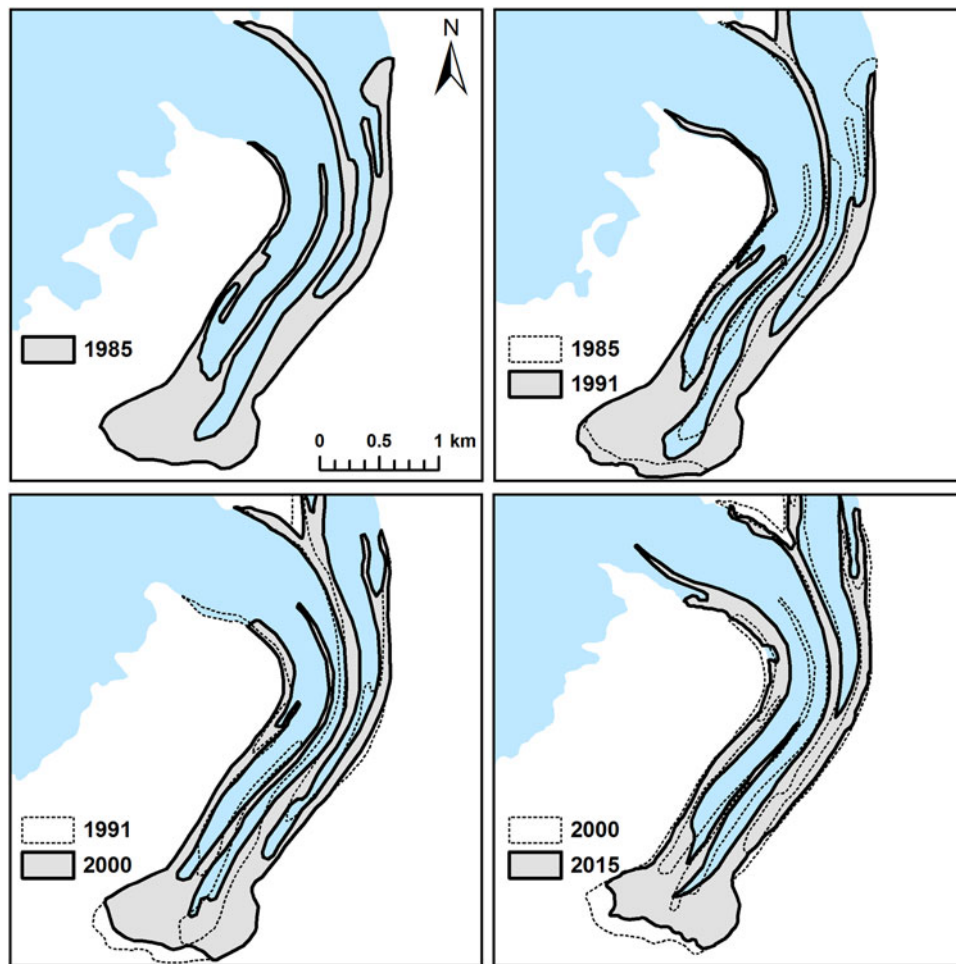
#### 4. DISCUSSION

In light of the temporal and spatial limitations of current glacier mass-balance datasets in the Andes Cordillera, one

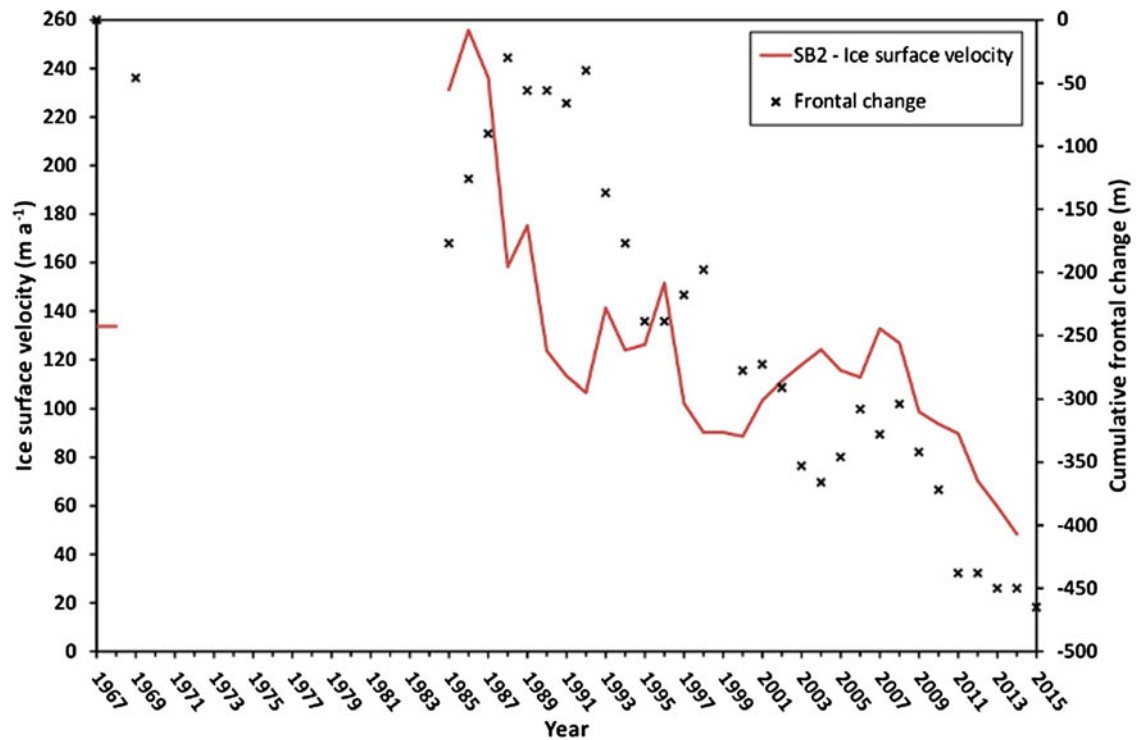
of the main aims of this study was to construct a long-term surface velocity record for Glaciar Universidad that could provide useful information for assessing glacier health. For steady-state glaciers, for example, ice velocities are strongly linked to mass balance, with the mass flux through a cross section of a glacier equalling the upstream mass balance (Paterson, 1994; Heid, 2011). For Glaciar Universidad, however, this link is complicated by the observation of possible surge behaviour in 1943 (Lliboutry, 1958). Triggered by internal glacier instabilities related to basal hydrology and thermal conditions, amongst others factors (Meier and Post, 1969; Björnsson, 1998; Dunse and others, 2015; Sevestre and others, 2015), glacier surging events are often decoupled from local climatic forcing (Raymond, 1987). In one scenario, the surface velocity fluctuations presented between 1967 and 2015 may thus only indicate different stages of a surge cycle (e.g. Melvold and Hagen, 1998) and would be of limited use for assessing changes in mass-balance conditions.

The abovementioned scenario, however, is challenged by the synchronicity of the surface velocity and glacier front fluctuations shown in this study with (1) the mass-balance records of the nearby Glaciar Echaurren Norte, which is located  $\sim 120 \text{ km}$  North of Glaciar Universidad ( $33.57^\circ\text{S}$ ,  $70.13^\circ\text{W}$ ) and (2) other glacier and climate observations available in the central Andes Cordillera. Available since 1976, Glaciar Echaurren Norte has the longest direct mass-balance record available for the Andes Cordillera (data presented in Fig. 3 are sourced from the World Glacier Monitoring Service (WGMS) (<http://www.wgms.ch>) and Mernild and others, 2015). Analysis of these records reveals periods of sustained positive mass balances in the 1980s and to a lesser extent in the 2000s (WGMS, 2013;



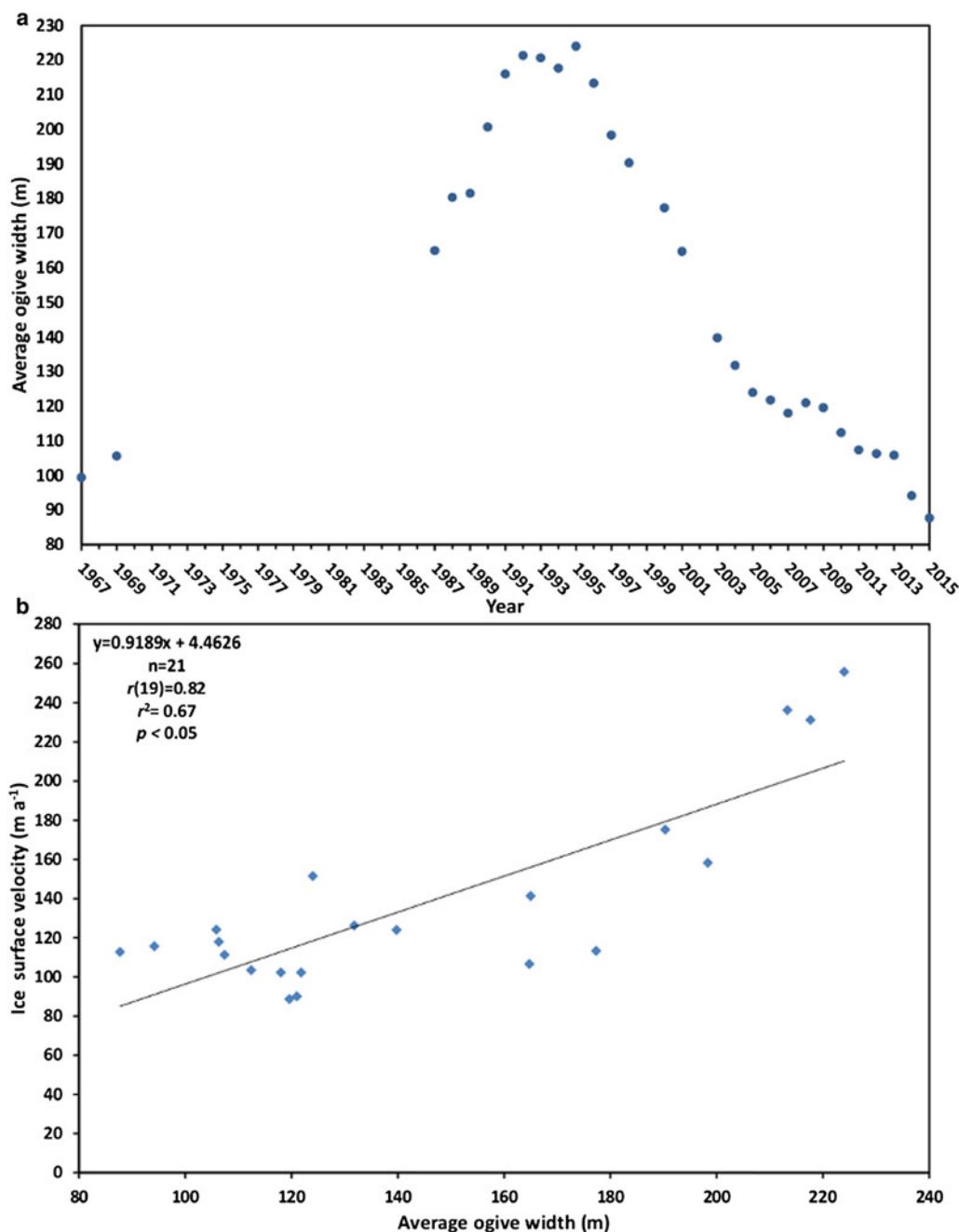


**Fig. 5.** Extent of ice surface moraines on the main trunk of Glaciar Universidad in 1985, 1991, 2000 and 2015. Ogive bands have been omitted to improve the visibility of temporal movements in the moraines delineated.



**Fig. 6.** Cumulative frontal change of Glaciar Universidad, between 1967 and 2015, compared with ice surface velocity fluctuations measured for SB2 (location shown in Fig. 1). Y-axis point labels for frontal change represent second year of observation period (e.g. 2015= frontal change between 2014 and 2015). Y-axis point labels for ice surface velocity are the same as stated in Figure 3.





**Fig. 7.** Average ogive width measured within SB3 (location shown in Fig. 1) between 1967 and 2015 (a.) and the linear relationship between average ogive width (SB3: 1995–2015) and ice surface velocity (SB2: 1985–2007) (including statistical information, where  $n$  is the number of data points used,  $r$  is Pearson's correlation (with the degrees of freedom in parentheses),  $r^2$  is the coefficient of determination and  $p$  is the level of significance (b). A time adjustment of  $-8$  a was applied to the ogive width time series in order to offset the distance newly formed ogives have to travel to before reaching SB2 (Section 3.2).

Masiokas and others, 2015). Mass-balance data for 1983, for example, was  $>10$  orders of magnitude greater than the overall mass-balance mean observed for Glaciar Echaurren Norte. In comparison with the 1980s and 2000s, mass-balance observations in the 1990s were largely negative, the overall pattern matching closely the surface velocity and glacier front fluctuations shown for Glaciar Universidad (see Figs 3, 6).

Advance behaviour similar to that shown for Glaciar Universidad has also been observed for a number of glaciers located in the central Andes Cordillera. Glaciers of the Rio Plomo basin Argentina ( $\sim 33.12^\circ\text{S}$ ,  $69.98^\circ\text{W}$ ), for example, underwent a general reactivation between 1982 and 1991,

characterised by rapid frontal advances (Llorens and Leiva, 1995; Llorens, 2002). Likewise, the glaciers surrounding Cerro Tupungato ( $33.35^\circ\text{S}$ ,  $69.77^\circ\text{W}$ ) were shown to have advanced between 1982 and 1985 (Llorens and Leiva, 2000). Glaciar Horcones Inferior ( $32.68^\circ\text{S}$ ,  $69.97^\circ\text{W}$ ) also experienced advances of several kilometres during the 1980s, and again between 2004 and 2006 (Unger and others, 2000; Llorens, 2002; Espizua and others, 2008).

Although glaciers in the central Andes Cordillera have been generally reducing in area over the past few decades, the corresponding periods of advance for Glaciar Universidad and other glaciers in the central Andes region,

particularly during the 1980s, suggests the direct influence of favourable climatic conditions. Snowfall analyses, for example, indicate a higher frequency of above average winter snowfall accumulation in the central Andes Cordillera since 1976 (Masiokas and others, 2009), with particularly large snow accumulation events occurring between 1980 and 1985 (Masiokas and others, 2006). These observations agree with the positive trend in rainfall measured for central Chile between 1970 and 2000 (Quintana, 2004), and 1979–2014 (Mernild and others, 2016). However, the influence of increased precipitation on glacier mass-balance conditions in the central Andes Cordillera has likely been offset through time by rising air temperatures reducing the amount of precipitation falling as snow. Falvey and Garreaud (2009) and Mernild and others (2016), for example, observed warming rates of  $0.25^{\circ}\text{C} (10 \text{ a})^{-1}$  between 1976 and 2006. Furthermore, in the 1990s, air temperature increase for the central Andes Cordillera coincided with a number of extreme drought events in central Chile (Quintana, 2000), which may have brought about negative mass-balance conditions, accounting for the reduced ice velocities observed for Glaciar Universidad during this period. If indeed the ice surface velocity and glacier front fluctuations shown are a direct response to climatic changes, the results presented here suggest that Glaciar Universidad has experienced increasingly negative mass-balance conditions since 1986, which were only partially reversed during the 1993–97 and 2001–09 periods before reducing further between 2009 and 2015. Such mass-balance behaviour agrees with what is shown for Glaciar Echaurren Norte.

The longitudinal width of the ogives present on the main trunk of Glaciar Universidad was temporally measured under the assumption that larger widths indicate higher ice surface velocities. After applying a time adjustment in order to offset the distance newly formed ogives have to travel to reach the sample box used, the surface velocity and ogive width measurements presented were shown to generally agree with the abovementioned assumption. Using this relationship, average ogive widths measured within a sample box between 1987 and 1993 could be used to interpolate ice velocities between 1978 and 1984, extending the velocity time series presented by 7 a. These interpolations suggest that the 1986/87 period represents the peak of a period of relatively increased ice surface velocities that began in the mid to late 1970s. However, these ice surface velocity interpolations contain a large amount of uncertainty and only represent a first-order approximation. In particular, the interpolations presented do not take into account the influence of temporal changes in compressional strain rates on the ogive width dataset presented. Such changes have likely occurred due to (1) changes in surface slope as a result of ice thickening and thinning, (2) changes in the longitudinal velocity gradient of the main glacier trunk and its north-western tributary and (3) changes in the ice flow influence of the north-eastern tributary. Additionally, the interpolations presented include ogive width mapping errors introduced through the use of relatively coarse satellite imagery. However, despite the aforementioned limitations, this study demonstrates the potential of surface ogive monitoring as a tool for assessing past glacier surface flow characteristics and should encourage further investigation of the relationship between these two variables using high-resolution satellite imagery and/or field based surveys.

## 5. CONCLUSION

Analysis of the remotely sensed datasets used in this study provides the following conclusions:

- (1) The main trunk of Glaciar Universidad experienced a large increase in ice surface velocity between 1967 and 1987. Rather than being confined to the north-western tributary, which dominates the ice flow of the main glacier trunk, moraine mapping suggests that the north-eastern tributary also underwent increased ice flows between 1967 and 1987. Following 1987, the main glacier trunk experienced a considerable surface velocity deceleration, with the 2014/15 period representing a possible 48 a low. This period of deceleration was interrupted by two periods of minor velocity increases from 1993 to 1997, and 2002–08.
- (2) Monitoring of the glacier terminus between 1967 and 2015 reveals that frontal fluctuations are fairly responsive to changes in ice surface velocity, responding with a 2 a lag between 1985 and 2015. In total, Glaciar Universidad experienced a  $465 \pm 44 \text{ m}$  cumulative frontal retreat between 1967 and 2015.
- (3) Assuming that the longitudinal width of ogives increases in response to accelerated ice surface velocities, ogive measurements obtained between 1987 and 1993 were used to interpolate ice surface velocity conditions between 1978 and 1984, extending the ice surface velocity time series presented by 7 a. Although only a first order approximation, this analysis suggests this assumed relationship to be true and highlights the potential use of glacier ogives to predict past ice flow characteristics.
- (4) Although having exhibited possible surge behaviour around 1943 (Lliboutry, 1958), the synchrony of the glacier changes presented for Glaciar Universidad with those reported for nearby glaciers suggests that this glacier is responding directly to climatic trends. If the above assumption is true, the results presented indicate a general pattern of increasingly negative glacier mass-balance conditions since the late 1980s. This pattern would match that shown in the mass-balance records (1978–2012) available for the nearby Glaciar Echaurren Norte (central Chilean Andes).
- (5) The automatically derived ice velocities presented were shown to compare well with repeat dGPS survey point movements ( $\pm 16 \text{ m a}^{-1}$ ), further validating the use of the CIAS feature tracking algorithm for estimating ice flow from satellite imagery. Despite the variation in image and sensor characteristics, error analyses also revealed close similarities between ice velocities derived from Landsat 5, Landsat 8 and ASTER satellite image pairs for roughly the same date, highlighting the cross comparability of CIAS displacements measurements taken from different sensor platforms.

## ACKNOWLEDGEMENTS

We thank the anonymous reviewers for their valuable critique of this article. The authors gratefully acknowledge the U.S. Geological Survey (Landsat imagery) and NASA Land Processes Distributed Active Archive centre (ASTER imagery) for free data access. We also thank Centro de Estudios Científicos (CECs) for the surveying of dGPS points during field campaigns conducted in 2009 and 2010. This

work was primarily supported by CECs, which is funded by the Chilean Government through the Centers of Excellence Base Financing Program of Comisión Nacional de Investigación y Tecnológica de Chile (CONICYT). Additional funding for this publication was also made available from: (1) the National Science Foundation of Chile (FONDECYT) under Grant Agreement #1140172; and (2) the Research Councils UK (RCUK), Natural Environment Research Council (NERC) and CONICYT under project code NE/N020693/1. RW outlined the study, analysed the data and wrote the manuscript, with revisions from SHM, and JKM provided the frontal fluctuations data. CB and DC assisted with data collection and analysis. We would also like to thank Monica Pinto (University of Chile) whose work on Glaciar Universidad provided inspiration for this study.

## REFERENCES

- Benn DI, Warren CR and Mottram RH (2007) Calving processes and the dynamics of calving glaciers. *Earth-Sci. Rev.*, **82**, 143–179 (doi: 10.1016/j.earscirev.2007.02.002)
- Björnsson H (1998) Hydrological characteristics of the drainage system beneath a surging glacier. *Nature*, **395**, 771–774 (doi: 10.1038/27384)
- Bown F, Rivera A and Acuña C (2008) Recent glacier variations at the Aconcagua basin, central Chilean Andes. *Ann. Glaciol.*, **48**, 43–48 (doi: <http://dx.doi.org/10.3189/172756408784700572>)
- Casassa G and 6 others (2007) Current status of Andean glaciers. *Global Planet. Change*, **59**, 1–9 (doi: 10.5194/tc-7-81-2013)
- Copland L and 7 others (2011) Expanded and recently increased glacier surging in the Karakorum. *Arct. Antarct. Alp. Res.*, **43**, 5013–5516 (doi: <http://dx.doi.org/10.1657/1938-4246-43.4.503>)
- Cuffey KM and Paterson WS (2010) *The physics of glaciers*, 4th edn. Elsevier, Butterworth-Heinemann, Oxford, 693 pp
- Davies BJ and Glasser NF (2012) Accelerating shrinkage of Patagonian glaciers from the Little Ice Age (~1870) to 2011. *J. Glaciol.*, **58**(212), 1063–1084 (doi: <http://dx.doi.org/10.3189/2012JoG12J026>)
- Dunse T and 5 others (2015) Glacier-surge mechanisms promoted by hydro-thermodynamic feedback to summer melt. *Cryosphere*, **9**, 197–215 (doi: 10.5194/tc-9-197-2015)
- Espizua LE, Pitte P and Ferri Hidalgo L (2008) Horcones Inferior glacier surge. In *Fluctuations of Glaciers for 2000–2005*. Vol. IX. Prepared by World Glacier Monitoring Service (WGMS) ICSU (FAGS)-IUGG (IACS)-UNEP-UNESCO-WMO, 41–42
- Falvey M and Garreaud RD (2009) Regional cooling in a warming period: recent temperature trends in the Southeast Pacific and along the west coast of subtropical South America (1979–2006). *J. Geophys. Res.*, **114**, D04102 (doi: 10.1029/2008JD010519)
- Frezzotti M, Capra A and Vittuari L (1998) Comparison between glacier velocities inferred from GPS and sequential satellite images. *Ann. Glaciol.*, **27**, 54–60
- Gacitúa G and 5 others (2015) 50 MHz helicopter-borne radar data for determination of glacier thermal regime in the central Chilean Andes. *Ann. Glaciol.*, **56**(70), 193–201 (doi: 10.3189/2015AoG70A953)
- Galiatsatos N, Donoghue DNM and Philip G (2008) High resolution elevation data derived from stereoscopic CORONA imagery with minimal ground control: an approach using IKONOS and SRTM data. *Photogramm. Eng. Remote Sens.*, **74**, 1093–1106 (doi: <http://dx.doi.org/10.14358/PERS.73.9.1093>)
- Gardner AS and 15 others (2013) Reconciled estimate of glacier contributions to sea level rise: 2003 to 2009. *Science*, **340**(6134), 852–857 (doi: 10.1126/science.1234532)
- Georges C (2004) The 20th century glacier fluctuations in the tropical Cordillera Blanca, Peru. *Arct. Antarct. Alp. Res.*, **36**, 100–107 (doi: 10.1657/1523-0430(2004)036[0100:TGFITT]2.0.CO;2)
- Goodsell B, Hambrey MJ and Glasser NF (2002) Formation of band ogives and associated structures at Bas Glacier d’Arolla, Valais, Switzerland. *J. Glaciol.*, **48**(161), 287–300 (doi: <http://dx.doi.org/10.3189/172756502781831494>)
- Hall DK, Bayr KJ, Schöner W, Bindschadler RA and Chien JYL (2003) Consideration of the errors inherent in mapping historical glacier positions in Austria from ground and space (1893–2001). *Remote Sens. Environ.*, **86**, 566–577 (doi: 10.1016/S0034-4257(03)00134-2)
- Heid T (2011) Deriving glacier surface velocities from repeat optical images. (PhD thesis, University of Oslo, Norway)
- Heid T and Käab A (2012a) Repeat optical satellite images reveal widespread and long term decrease in land-terminating glacier speeds. *Cryosphere*, **6**, 467–478 (doi: 10.5194/tc-6-467-2012)
- Heid T and Käab A (2012b) Evaluation of existing image matching methods for deriving glacier surface displacements globally from optical satellite imagery. *Remote Sens. Environ.*, **118**, 339–355 (doi: 10-1016/j.rse.2011.11.024)
- Jobarb S and Dzokoski M (2006) Evolution of glacier flow and drainage during the ablation season. *J. Hydrol.*, **330**(3–4), 663–71 (doi: 10.1016/j.jhydrol.2006.04.031)
- Käab A (2005) *Remote sensing of mountain glaciers and permafrost creep*. Schriftenreihe Physische Geographie, Department of Geography, Zurich, 48, 266 pages
- Käab A and Volmer M (2000) Surface geometry, thickness changes and flow fields on creeping mountain permafrost: automatic extraction by digital image analysis. *Permafrost. Periglacial Processes*, **11**, 315–326 (doi: 10.1002/1099-1530(200012)11:4<315::AID-PPP365>3.0.CO;2-J)
- Leighton FB (1951) Ogives of the East Twin Glacier, Alaska: their nature and origin. *J. Geol.*, **39**(132), 373–384
- Lliboutry L (1958) Studies of the shrinkage after a sudden advance, blue bands and wave ogives on Glaciar Universidad (central Chilean Andes). *J. Glaciol.*, **3**(24), 261–270.
- Llorens R and Leiva JC (1995) Glaciological studies in the high Central Andes using digital processing of satellite images. *Mountain Res. Dev.*, **15**(4), 323–330 (doi: 10.2307/3673808)
- Llorens R and Leiva JC (2000) Recent glacier fluctuations in the Southern Andes. In Smolka PP and Volkheimer W eds. *Southern hemisphere Paleoland Neoclimates, key sites, methods, data and models*. Springer, Berlin, 143–149
- Llorens RE (2002) Glacier advances or glacier retreats in the Argentine Central Andes. In Trombotto D and Villalba R eds. *IANIGLA, 30 years of basic and applied research on environmental sciences*. Zeta Editores, Mendoza, Argentina, 177–180
- López-Moreno JL and 9 others (2014) Recent glacier retreat and climate trends in Cordillera Huaytapallana, Peru. *Global. Planet. Change*, **112**, 1–11 (doi: 10.1016/j.gloplacha.2013.10.010)
- Malmros JK, Mernild SH, Wilson R, Yde JC and Fensholt R (2016) Glacier area changes in the central Chilean and Argentinean Andes 1955–2013/14. *J. Glaciol.*, **62**(232), 391–401 (doi: 10.1017/jog.2016.43)
- Masiokas MH, Villalba R, Luckman BH, Le Quesne C and Carlos Aravena J (2006) Snowpack variations in the Central Andes of Argentina and Chile, 1951–2005: large-scale atmospheric influences and implications for water resources in the region. *J. Climate*, **19**, 6334–6352 (doi: <http://dx.doi.org/10.1175/JCLI3969.1>)
- Masiokas MH and 5 others (2008) 20th-century glacier recession and regional hydroclimatic changes in northwestern Patagonia. *Global. Planet. Change*, **60**, 85–100 (doi: 10.1016/j.gloplacha.2006.07.031)
- Masiokas MH and 5 others (2009) Glacier fluctuations in extratropical South America during the past 1000 years. *Palaeogeogr. Palaeoclimatol.*, **281**, 242–268 (doi: 10.1016/j.palaeo.2009.08.006)
- Masiokas MH and 11 others (2015) Reconstructing glacier mass balances in the Central Andes of Chile and Argentina using local and regional hydro-climatic data. *Cryo. Disc.*, **9**, 4949–4980 (doi: 10.5194/tcd-9-4949-2015)

- Meier MF and Post A (1969) What are glacier surges? *Can. J. Earth Sci.*, **6**(4), 807–817
- Melvold T and Hagen JO (1998) Evolution of a surge-type glacier in its quiescent phase: Kongsvegen, Spitsbergen, 1964–95. *J. Glaciol.*, **44**, 394–404
- Mernild SH, Lipscomb WH, Bahr DB, Radić V and Zemp M (2013a) Global glacier retreat: a revised assessment of committed mass losses and sampling uncertainties. *Cryosphere*, **7**, 1565–1577 (doi: 10.5194/tc-7-1565-2013)
- Mernild SH and 7 others (2013b) Volume and velocity changes at Mittivakkat Gletscher, Southeast Greenland, 1994–2012. *J. Glaciol.*, **59**(216), 660–670 (doi: 10.3189/2013JoG13J017)
- Mernild SH and 6 others (2015) Mass loss and imbalance of glaciers along the Andes Cordillera to the sub-Antarctic islands. *Global Planet. Change*, **133**, 109–119 (doi: 10.1016/j.gloplacha.2015.08.009)
- Mernild SH and 5 others (2016) The Andes Cordillera. part I: snow distribution, properties, and trends (1979–2014). *Int. J. Climatol.*, (doi: 10.13140/RG.2.1.4929.3929)
- Mouginot J and Rignot E (2015) Ice motion of the Patagonian Icefields of South America: 1984–2014. *Geophys. Res. Lett.*, **42** (5), 1441–1449 (doi: 10.1002/2014GL062661)
- Muto M and Furuya M (2013) Surface velocities and ice-front positions of eight major glaciers in the Southern Patagonian Ice Field, South America, from 2002 to 2011. *Remote Sens. Environ.*, **139**, 50–59 (doi: 10.1016/j.rse.2013.07.034)
- Nye JF (1958) A theory of wave formation in glaciers (Cambridge Austerdals-bre Expedition). *International Association of Scientific Hydrology Publication 47* (Symposium at Chamonix 1958 – *Physics of the Movement of the Ice*), 139–154
- Oerlemans J (2008) *Minimal glacier models*. Utrecht University, Igitur.
- Paterson WSB (1994) *The physics of glaciers*, 3rd edn. Elsevier, Oxford
- Paul F and Mölg N (2014) Hasty retreat of glaciers in northern Patagonia from 1985 to 2011. *J. Glaciol.*, **60**(224), 1033–1043 (doi: 10.3189/2014JoG14j104)
- Pellicciotti F, Burlando P and Van Vliet K (2007) Recent trends in precipitation and streamflow in the Aconcagua River basin, central Chile. In *Glacier Mass Balance Changes and Meltwater Discharge, Selected Papers from Sessions at the IAHS Assembly in Foz do Iguaçu, Brazil, 2005*, IAHS Publication 318
- Posamentier HW (1978) Thoughts on ogive formation. *J. Glaciol.*, **20** (82), 218–220
- Post A, O’Neel R, Motyka R and Streveler G (2011) A complex relationship between calving glaciers and climate. *Eos Trans. Am. Geophys. Union*, **92**, 305–312 (doi: 10.1029/2011EO370001)
- Quintana JM (2000) The drought in Chile and la Niña. *Drought Network News*, **12**, 3–6
- Quintana JM (2004) *Factors affecting Central Chile rainfall variations at interdecadal scales (in Spanish)*. (MS thesis, Departamento de Geofisica, Universidad de Chile, Lincoln 88 pp)
- Rabatel A, Castebrunet H, Favier V, Nicholson L and Kinnard C (2011) Glacier changes in the Pascua-Lama region, Chilean Andes (29°S): recent mass balance and 50 yr surface area variations. *Cryosphere*, **5**, 1029–1041 (doi: 10.5194/tc-5-1029-2011)
- Rabatel A and 27 others (2013) Current state of glaciers in the tropical Andes: a multi-century perspective on glacier evolution and climate change. *Cryosphere*, **7**, 81–102 (doi: 10.5194/tc-7-81-2013)
- Raymond CF (1987) How do glaciers surge? A review. *J. Geophys. Res.*, **92**(B9), 9121–9134 (doi: 10.1029/JB092iB09p09121)
- Redpath TAN, Sirguey P, Fitzsimons SJ and Kääh A (2013) Accuracy assessment for mapping glacier flow velocity and detecting flow dynamics from ASTER satellite imagery: Tasman Glacier, New Zealand. *Remote Sens. Environ.*, **133**, 90–101 (doi: 10.1016/j.rse.2013.02.008)
- Rignot E, Rivera A and Casassa G (2003) Contribution of the Patagonia Icefields of South America to Sea Level Rise. *Science*, **302**(5644), 434–437 (doi: 10.1126/science.1087393)
- Rivera A, Benham T, Casassa G, Bamber J and Dowdeswell JA (2007) Ice elevation and areal changes of glaciers from the Northern Patagonia Icefield, Chile. *Global Planet. Change*, **59**, 126–137 (doi: 10.1016/j.gloplacha.2006.11.037)
- Rivera A, Koppes M, Bravo C and Aravena JC (2012) Little Ice Age advance and retreat of Glaciar Jorge Montt, Chilean Patagonia. *Clim. Past*, **8**, 403–414 (doi: 10.5194/cp-8-403-2012)
- Sakakibara D and Sugiyama S (2014) Ice-front variations and speed changes of calving glaciers in the Southern Patagonia Icefield. *J. Geophys. Res.-Sol. Earth*, **119**, 2541–2554 (doi: 10.1002/2014JF003148)
- Sevestre H, Benn DI, Hulton NRJ and Bælum K (2015) Thermal structure of Svalbard glaciers and implications for thermal switch models of glacier surging. *J. Geophys. Res. Earth Surf.*, **120**, 2220–2236 (doi: 10.1002/2015JF003517)
- Storey J, Choate M and Lee K (2014) Landsat 8 Operational Land Imager on-orbit geometric calibration and performance. *Remote Sens.*, **6**, 11127–11152 (doi: 10.3390/rs6111127)
- Sundal AV and 5 others (2011) Melt-induced speed-up of Greenland icesheet offset by efficient subglacial drainage. *Nature*, **469** (7331), 521–524 (doi: 10.1038/nature09740)
- Unger C, Espizua LE and Bottero R (2000) Untersuchung von Gletscherständen im Tal des Rio Mendoza (Zentralargentinische Andes) – Kartierung eines Surge-Vorstosses des Horcones Inferior. *Z. Fr. Gletsch. Glazial.*, **36**(1), 151–157
- Vincent C, Soruco A, Six D and Le Meur E (2009) Glacier thickening and decay analysis from 50 years of glaciological observations performed on Glacier d’Argentière, Mont Blanc area, France. *Ann. Glaciol.*, **50**, 73–79 (doi: 10.3189/172756409787769500)
- WGMS (2013) Glacier mass balance bulletin No. 12 (2010–2011). In Zemp M and 6 others eds. ICSU (WDS)/IUGG (IACS)/UNEP/UNESCO/WMO, World Glacier Monitoring Service, Zurich, Switzerland, 106 pp (doi: 10.5904/wgms-fog-201311)
- White A and Copland L (2015) Decadal-scale variations in glacier area changes across the Southern Patagonian Icefield since the 1970s. *Arct. Antarct. Alp. Res.*, **47**(1), 147–167 (doi: 10.1657/AAAR0013-102.)
- Williams RS, Jr, Hall DK, Sigurdsson O and Chien JYL (1997) Comparison of satellite-derived with ground-based measurements of the fluctuations of the margins of Vatnajökull, Iceland. *Ann. Glaciol.*, **24**, 72–80
- Willis MJ, Melkonian AK, Pritchard ME and Ramage JM (2012) Ice loss rates at the Northern Patagonian Icefield derived using a decade of satellite remote sensing. *Remote Sens. Environ.*, **117**, 184–198 (doi: 10.1016/j.rse.2011.09.017)