



## Aberystwyth University

### *The structural and dynamic responses of Stange Ice Shelf to recent environmental change*

Holt, T. O.; Glasser, N. F.; Fricker, H. A.; Padman, L.; Luckman, A.; King, O.; Quincey, D. J.; Siegfried, M. R.

*Published in:*  
Antarctic Science

*DOI:*  
[10.1017/S095410201400039X](https://doi.org/10.1017/S095410201400039X)

*Publication date:*  
2014

*Citation for published version (APA):*  
Holt, T. O., Glasser, N. F., Fricker, H. A., Padman, L., Luckman, A., King, O., Quincey, D. J., & Siegfried, M. R. (2014). The structural and dynamic responses of Stange Ice Shelf to recent environmental change. *Antarctic Science*, 26(6), 646-660. <https://doi.org/10.1017/S095410201400039X>

#### **General rights**

Copyright and moral rights for the publications made accessible in the Aberystwyth Research Portal (the Institutional Repository) are retained by the authors and/or other copyright owners and it is a condition of accessing publications that users recognise and abide by the legal requirements associated with these rights.

- Users may download and print one copy of any publication from the Aberystwyth Research Portal for the purpose of private study or research.
- You may not further distribute the material or use it for any profit-making activity or commercial gain
- You may freely distribute the URL identifying the publication in the Aberystwyth Research Portal

#### **Take down policy**

If you believe that this document breaches copyright please contact us providing details, and we will remove access to the work immediately and investigate your claim.

tel: +44 1970 62 2400  
email: [is@aber.ac.uk](mailto:is@aber.ac.uk)

# The structural and dynamic responses of Stange Ice Shelf to recent environmental change

T.O. HOLT<sup>1</sup>, N.F. GLASSER<sup>1</sup>, H.A. FRICKER<sup>2</sup>, L. PADMAN<sup>3</sup>, A. LUCKMAN<sup>4</sup>, O. KING<sup>5</sup>, D.J. QUINCEY<sup>6</sup> and M.R. SIEGFRIED<sup>2</sup>

<sup>1</sup>Centre for Glaciology, Department of Geography and Earth Sciences, Aberystwyth University, Aberystwyth SY23 3DB, UK

<sup>2</sup>Scripps Institution of Oceanography, UCSD, 9500 Gilman Drive, La Jolla, CA 92093, USA

<sup>3</sup>Earth & Space Research, Corvallis, OR 97333, USA

<sup>4</sup>Department of Geography, Swansea University, Singleton Park, Swansea SA2 8PP, UK

<sup>5</sup>British Antarctic Survey, NERC, High Cross, Madingley Road, Cambridge CB3 0ET, UK

<sup>6</sup>School of Geography, University of Leeds, Leeds LS2 9JT, UK

toh08@aber.ac.uk

**Abstract:** Stange Ice Shelf is the most south-westerly ice shelf on the Antarctic Peninsula, a region where positive trends in atmospheric and oceanic temperatures have been recently documented. In this paper, we use a range of remotely sensed datasets to evaluate the structural and dynamic responses of Stange Ice Shelf to these environmental changes. Ice shelf extent and surface structures were examined at regular intervals from optical and radar satellite imagery between 1973 and 2011. Surface speeds were estimated in 1989, 2004 and 2010 by tracking surface features in successive satellite images. Surface elevation change was estimated using radar altimetry data acquired between 1992 and 2008 by the European Remote Sensing Satellite (ERS) -1, -2 and Envisat. The mean number of surface melt days was estimated using the intensity of backscatter from Envisat's Advanced Synthetic Aperture Radar instrument between 2006 and 2012. These results show significant shear fracturing in the southern portion of the ice shelf linked to enhanced flow speed as a consequence of measured thinning. However, we conclude that, despite the observed changes, Stange Ice Shelf is currently stable.

Received 13 September 2013, accepted 12 May 2014

**Key words:** Antarctic Peninsula, Landsat, radar altimetry, remote sensing, Synthetic Aperture Radar

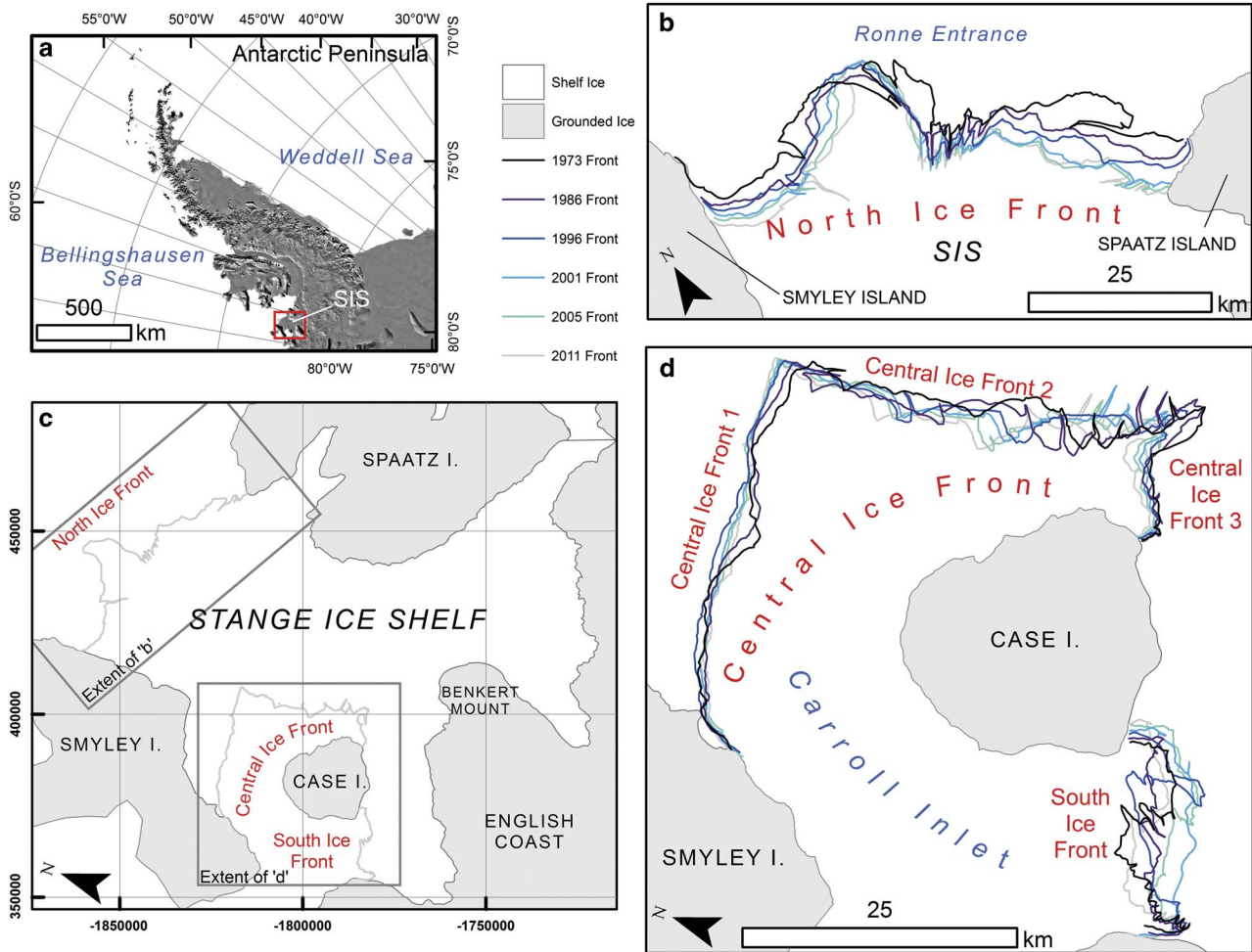
## Introduction

The stability of Antarctic Peninsula (AP) ice shelves has been extensively investigated (e.g. Reynolds 1988, Lucchitta & Rosanova 1998, Scambos *et al.* 2000, 2004, Braun *et al.* 2009, Holt *et al.* 2013) since Mercer (1978) commented on the role of atmospheric warming in the region. Particular interest has been paid to the Prince Gustav (Cooper 1997, Glasser *et al.* 2011), Larsen A (Rott *et al.* 1996) and Larsen B ice shelves (Scambos *et al.* 2004, Glasser & Scambos 2008), owing to the rapidity with which the final collapse phases occurred (weeks-to-months). The irregular and significant break-up patterns of the Wilkins Ice Shelf (e.g. Braun *et al.* 2009, Scambos *et al.* 2009) and recession of George VI Ice Shelf have also been examined, and illustrate the instability of the remaining ice shelves in this region (e.g. Lucchitta & Rosanova 1998, Holt *et al.* 2013).

Holt *et al.* (2013) concluded that there are several common glaciological characteristics that precede break-up phases of AP ice shelves. These include: i) sustained recession and a concave ice front towards the centre of an ice shelf from lateral pinning points (Doake *et al.* 1998),

ii) thinning from atmospheric or oceanic warming (Shepherd *et al.* 2004, Fricker & Padman 2012, Pritchard *et al.* 2012), iii) an increase in flow speed (Rack *et al.* 2000, Rack & Rott 2004, Vieli *et al.* 2007), and iv) structural weakening along suture zones (Glasser & Scambos 2008) and at the calving front (Braun *et al.* 2009).

The approximate timing of break-up events appears to be associated with the southward migration of the empirical -9°C mean annual isotherm (Morris & Vaughan 2003), caused by atmospheric warming in the region of c. 3°C since 1951 (King 1994, Meredith & King 2005). Barrand *et al.* (2013) identified that enhanced recession of ice shelves occurred when surface melt duration was lengthened, and Fyke *et al.* (2010) have suggested that break-up events occur when positive degree days exceed 200 days per annum. Other authors, including Shepherd *et al.* (2003, 2004), Pritchard *et al.* (2012), Fricker & Padman (2012), Padman *et al.* (2012) and Rignot *et al.* (2013), have highlighted the importance of basal melting on ice shelf mass balance, and in relation to this, a warming trend of intermittent and deep water in the Weddell Sea (e.g. Robertson *et al.* 2002), warming water on the continental shelf of the Bellingshausen Sea



**Fig. 1a.** Location of Stange Ice Shelf on the Antarctic Peninsula. **c.** Overview of Stange Ice Shelf from 1973–2011. **b. & d.** Changes at the north, central and south ice fronts.

(up to  $0.5^{\circ}\text{C}$  in the upper 100 m; Meredith & King 2005), intermittent thickening of the Bellingshausen Sea's Warm Deep Waters (WDW) (e.g. Holland *et al.* 2010), and a reduction in annual and seasonal sea ice extent in the western AP (Stammerjohn *et al.* 2008), all indicating environmental change across the region.

It has also been noted that widespread meltwater on the ice shelf surface acts as a driving force in fracture propagation that preconditions the ice shelf for rapid collapse (MacAyeal *et al.* 2003, Scambos *et al.* 2003), although the winter break-up events of the Wilkins Ice Shelf illustrated that this is not a precursor for all collapses (see Scambos *et al.* 2009). Other factors such as embayment geometry (Fox & Vaughan 2005) and the presence of ice rises (Hughes 1983, Reynolds 1988, Doake & Vaughan 1991, Braun *et al.* 2009) may also impact the response of individual ice shelves.

In this paper, we examine the structural and dynamic regimes of Stange Ice Shelf (SIS) between 1973 and 2011 using remote sensing data.

### Study area

The SIS is located on the south-west AP (Fig. 1). Morris & Vaughan (2003) showed that mean annual temperatures of SIS range from  $-11^{\circ}\text{C}$  at the north ice front to  $-15^{\circ}\text{C}$  at the English Coast grounding line, and thus is below the  $-9^{\circ}\text{C}$  mean annual isotherm. The ice shelf is fed by ice flowing from three grounded locations, and has three independent ice fronts. Consequently, SIS has a complex configuration, but it has rarely been documented, and little is known about its glaciological conditions and evolution over its recent history. Cook & Vaughan (2010) commented on the fluctuating ice fronts and identified a total areal decrease of 3% between 1973 and 2008 (from  $8286\text{ km}^2$  to  $8022\text{ km}^2$ ). Fricker & Padman (2012) showed that spatially-averaged elevation changes varied from  $-0.90$  to  $0.61\text{ m a}^{-1}$  from 1992–2008. Furthermore, Rignot *et al.* (2013) estimated that *c.* 85% of the SIS mass loss occurs through basal melting, with a mean rate of *c.*  $3.5\text{ m a}^{-1}$ , with only a small calving flux.

**Table I.** List of satellite images and their uses in this study.

Sensor	Scene ID	Date	Path	Row	Scene centre		M	P	S	F
					°Lat	°Long				
MSS	L1233113_11319730129	29/01/1973	233	113	-77.847	-74.051	✓		✓	
MSS	L1233112_11219730129	29/01/1973	233	112	-75.036	-72.85	✓		✓	
TM	L5220112_11219860218	18/02/1986	220	112	-76.856	-73.461	✓		✓	✓
TM	L5220111_11119860218	18/02/1986	220	111	-74.518	-72.233	✓		✓	✓
TM	L5220112_11219860306	06/03/1986	220	112	-76.931	-73.470	✓		✓	✓
TM	L4219112_11219890126	26/01/1989	219	112	-75.574	-73.441				✓
TM	L4219112_11219891212	12/12/1989	219	112	-75.520	-73.455				✓
ETM+	L72220112_11220010102	02/01/2001	220	112	-76.96	-73.383	✓		✓	✓
ETM+	L72219112_11220011127	27/11/2001	219	112	-75.667	-73.454	✓		✓	✓
ETM+	L72220112_11220011220	20/12/2001	220	112	-77.260	-73.450	✓		✓	✓
ETM+	L72220112_11220040315	15/03/2004	220	112	-77.130	-73.430		✓		✓
ETM+	L72221112_11220050205	05/02/2005	221	112	-77.122	-73.299	✓		✓	
ETM+	L72219112_11220051208	08/12/2005	219	112	-75.667	-73.454	✓		✓	
ETM+	L72220112_11220060116	16/01/2006	220	112	-77.075	-73.421		✓		
ETM+	L72220112_11220070103	03/01/2007	220	112	-76.961	-73.402		✓		
ETM+	L72220112_11220080122	22/01/2008	220	112	-76.955	-73.344		✓		✓
ETM+	L72220112_11220081207	07/12/2008	220	112	-76.877	-73.377		✓		✓
ETM+	L72221112_11220091115	15/11/2009	221	112	-77.122	-73.299		✓		✓
ETM+	L72220112_11220110114	14/01/2011	220	112	-76.967	-73.403	✓		✓	✓
ETM+	L72219112_11220110208	08/02/2011	219	112	-77.075	-73.421	✓		✓	✓
Sensor	Orbit/frame (Path)	Date			°Lat	°Long				
ERS-2 SAR	04282/5655 (Ascending)	14/02/1996	-	-	-72.955	-77.462			✓	

M = full glaciological mapping assessment, P = partial assessment, S = spatial assessment, F = used in surface feature tracking.

## Data and methods

### Ice-surface structural mapping

The following surface features and glaciological structures were digitized in various thermal, visible and microwave satellite images acquired between 1973 and 2011: ice front and ice shelf grounding line to estimate the area, rifts, fracture traces, crevasses, longitudinal structures (elsewhere termed flow stripes, streaklines, flowbands), pressure ridges, and ice rumpled (see Holt *et al.* 2013 for description and significance of structures). Two Landsat Multi-spectral Scanner (MSS), five Landsat Thematic Mapper (TM) and 13 Enhanced TM (ETM+) images were used for the years 1973, 1986, 1989, 2001, 2005 and 2011 (Table I). Mapping was performed using those image bands that offered the highest spatial and spectral resolution, noting that resolvable spatial scales increase with increasing wavelength. Landsat MSS Band 5 (0.6–0.7  $\mu\text{m}$ , red, 82 m), Landsat TM/ETM+ Band 4 (0.77–0.90  $\mu\text{m}$ , near infrared, 30 m) and Landsat ETM+ Panchromatic Band 8 (0.52–0.9  $\mu\text{m}$ , green/red/near infrared, 15 m) were used. A single ERS-2 Synthetic Aperture Radar (SAR) scene (spatial resolution *c.* 25 m) was used to calculate the area for February 1996 when there was a gap in the Landsat acquisition over Antarctica.

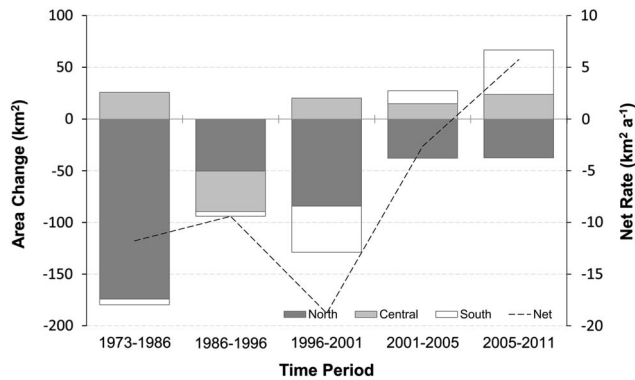
Digitizing was carried out at three main scales for consistency across all satellite scenes: i) 1:100 000 for large surface features such as longitudinal structures, ii) 1:50 000 for rifts, the ice front and the grounding zone,

and iii) 1:25 000 for crevasses and pressure ridges. For areas where significant change was observed, further mapping at finer spatial and temporal resolutions was carried out to provide detail of short-term changes.

### Ice shelf velocity

To estimate ice shelf flow speed, manual feature tracking was carried out for the years 1989, 2004 and 2010 following the method of Holt *et al.* (2013). A manual approach was chosen over automated alternatives for the following reasons: i) the considerable variations in surface-feature scale across the ice shelf limited automated procedures, ii) the ability to map displacements between multiple scenes over different paths and rows of the satellite image, and iii) the partial masking of features by fine clouds or atmospheric haze in a number of scenes.

Fourteen Landsat scenes with time differences of less than three years were used to calculate surface flow speeds (Table I). Landsat scenes were initially co-registered to within one pixel of each other, with displacement measurements also carried out to an estimated accuracy of one pixel, resulting in a maximum uncertainty for flow speed and direction of two pixels between image pairs. The datapoints were normalized to express displacement in metres per annum, and interpolated using a nearest-neighbour algorithm, selected because it performs equally well with regularly and irregularly distributed data



**Fig. 2.** Stange Ice Shelf area change at the north, central and south ice fronts (columns), and net rate of change (dashed line) from 1973–2011.

(Watson 1992). As an independent check, comparison of our 2010 feature tracking results with InSAR derived flow speeds (2007) by Rignot *et al.* (2011) show good agreement (typically  $\pm 30$  m) across SIS.

#### Surface elevation change

Surface elevation changes ( $dh/dt$ ) was estimated for the period 1992–2008 using ERS-1/2 and Envisat radar altimetry (RA) crossover data following the methods detailed by Fricker & Padman (2012). The RA data were obtained from NASA-GSFC's Ice Altimetry group (<http://icesat4.gsfc.nasa.gov/>). Data acquired during the summer (December–March) were excluded to avoid periods of potential surface melting that may have affected the radar altimeter return signal (Thomas *et al.* 2008). Therefore, this analysis is based on RA measurements acquired between 1 April and 30 November each year.

The data were subsetted to ice shelf areas using an ice shelf mask digitized from the image Mosaic of Antarctica (MOA) (Scambos *et al.* 2007), and adjusted accordingly using an InSAR-derived grounding zone map (Rignot *et al.* 2011). Crossover analysis was used to determine elevations at the intersecting points of ascending and

descending tracks; the precise location and surface elevation of the crossover points were determined by interpolating the surface elevation measurement either side of the crossover. A central reference point was then used for each crossover to allow comparisons through time. Any crossovers located within 10 km of the grounding zone were excluded to ensure the analysis was conducted only where hydrostatic equilibrium had been reached, and points near the ice fronts that were 'lost' to calving events during the data period were removed. One additional crossover was removed from the original Fricker & Padman (2012) dataset because it was close to an ice rumple, so that hydrostatic equilibrium may have been compromised at this point. In total, 13 crossover points were analysed across SIS, with the average distance between crossover locations being *c.* 27 km.

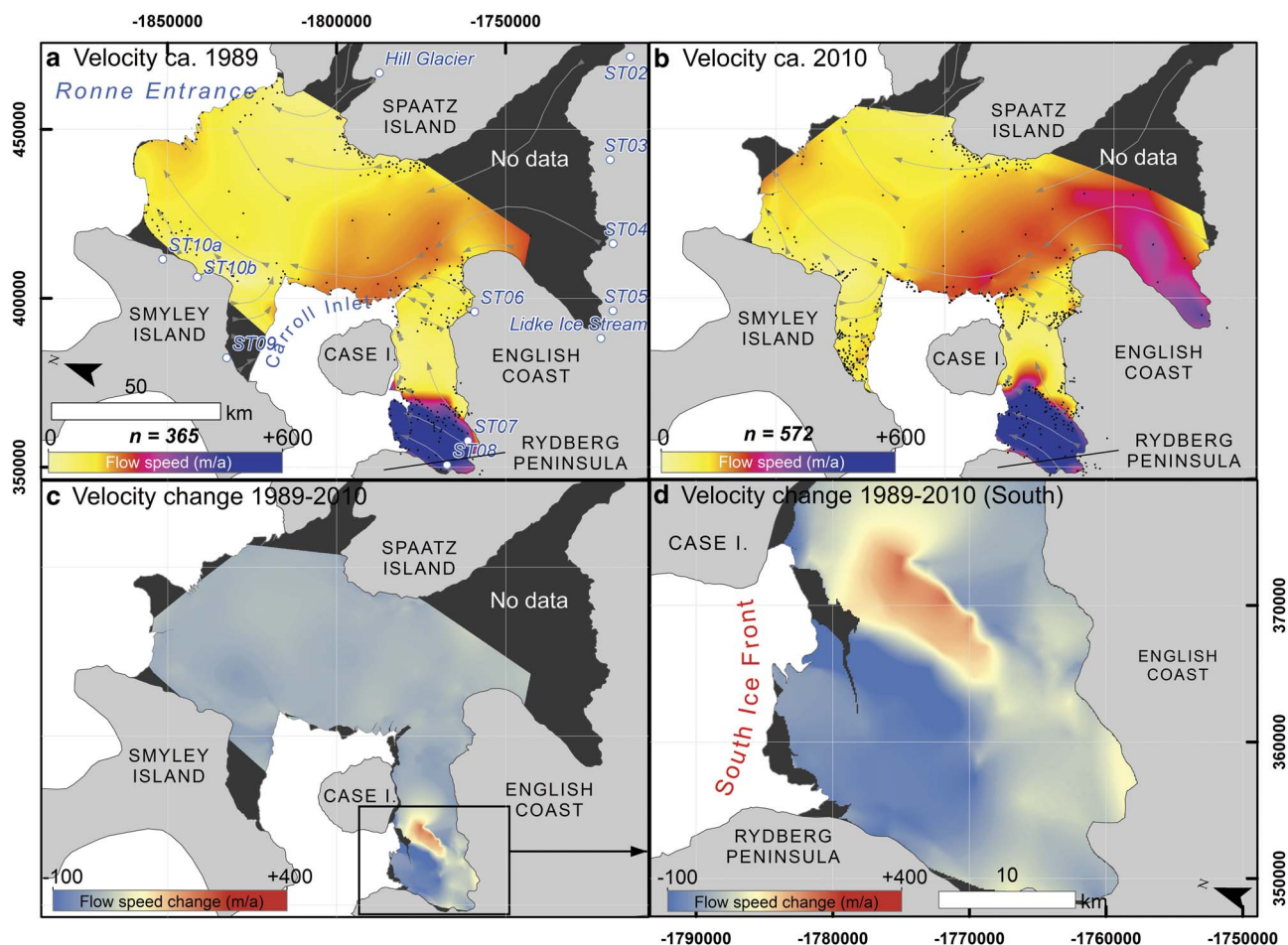
#### Surface melt calculation

Surface melt extent was estimated from Envisat ASAR Wide-Swath-Mode (WSM) data for all summers for which data from this mode of the instrument is available (2006, 2007, 2011, 2012). The ASAR WSM data have a spatial resolution of 150 m and the revisit time at the latitude of SIS is 2–3 days. Deriving surface melt from active microwave imagery such as scatterometry is well established (e.g. Tedesco & Monaghan 2009, Trusel *et al.* 2012), but SAR data were chosen for its higher spatial resolution (Luckman *et al.* 2014). In common with other studies, the radar backscatter in each image was compared with the mean value for all winter images. Radar backscatter is highly sensitive to water content; meltwater present at or near the surface absorbs the microwave radiation and the backscatter declines. A threshold of 3 dB below the winter mean was used to indicate the presence of surface meltwater (Nagler & Rott 2000). The decline in backscatter when water is present is so pronounced that the detection of surface melt is not very sensitive to the 3 dB threshold. Annual melt days are defined as the number of days for which melt was detected, assuming continued presence or absence of melt on intervening days when no imagery was available.

**Table II.** Loss, gain and net changes at each of the ice fronts of Stange Ice Shelf between 1973 and 2011.

Period	North			Central			South		
	Loss (km²)	Gain (km²)	Balance (km²)	Loss (km²)	Gain (km²)	Balance (km²)	Loss (km²)	Gain (km²)	Balance (km²)
1973–1986	184.2	10.1	<i>-174.1</i>	19.2	44.9	25.7	17.7	12.2	-5.5
1986–1996	70.3	19.9	<i>-50.3</i>	59.5	20.4	<i>-39.1</i>	15.5	10.8	-4.7
1996–2001	90.0	5.7	<i>-84.3</i>	8.9	29.1	20.2	47.5	2.8	<i>-44.6</i>
2001–2005	44.8	7.0	<i>-37.9</i>	6.7	21.4	14.8	5.2	17.7	12.5
2005–2011	52.4	14.9	<i>-37.4</i>	9.4	33.1	23.7	1.2	44.3	43.1
1973–2011	441.6	57.6	<i>-384.0</i>	103.7	149.0	45.2	87.1	87.9	0.8

Italics indicate periods where the net change was negative.



**Fig. 3.** Stange Ice Shelf flow velocities derived from manual feature tracking for **a. c.** 1989 and **b. c.** 2010. Grey arrows indicate flow direction, black dots are the points from which velocities have been interpolated (number of points used **a.**  $n = 365$ , **b.**  $n = 572$ ). **c.** Overall velocity change. **d.** Area of the greatest velocity change near the south ice front.

## Results

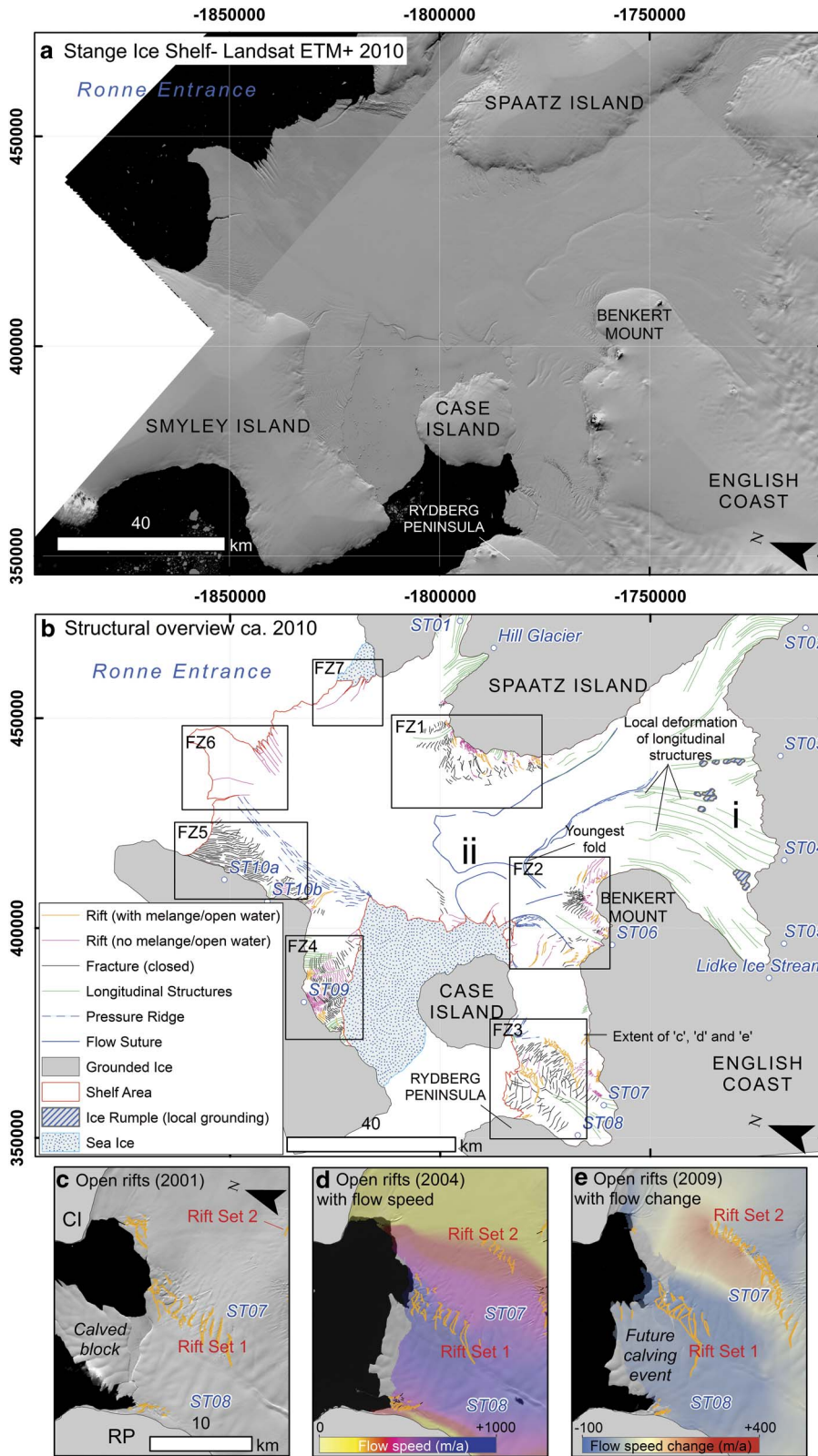
### *Spatial extent and geometry*

Our results show that SIS experienced a net loss of *c.* 338 km<sup>2</sup> of ice (4%) between 1973 and 2011 (Figs 1 & 2). Only the north ice front experienced a net loss (384.0 km<sup>2</sup>). The central and south ice fronts advanced by 45.2 km<sup>2</sup> and 0.8 km<sup>2</sup>, respectively, between 1973 and 2011 (Table II). The south ice front displayed cycles of ice front advance and calving along preconditioned structural weaknesses. Changes at the central ice front were largely a result of ice motion parallel to the ice front profile (i.e. not typical forward motion, Fig. 1c & d). Despite the observed retreat, the north ice front retained its distinctive shape, with a central ‘ice tongue’ protruding into Ronne Entrance (Fig. 1b). The three sub-components of the central ice front showed little change (Fig. 1d); central ice front 1 was almost linear, and central ice fronts 2 and 3 were slightly convex. The south ice front’s profile was comparable in 2011 to that in 1973 (Fig. 1d).

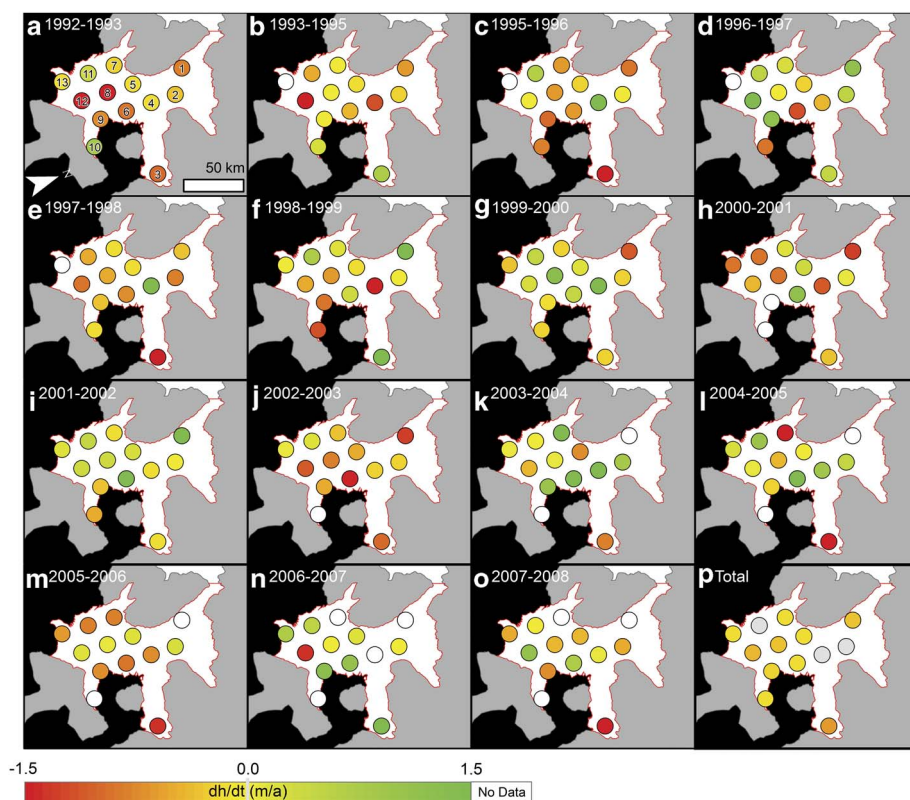
### *Ice shelf flow*

The greatest contributors to SIS by mass were located along the English Coast with the Lidke Ice Stream, ST07 and ST08 (previously unnamed tributaries, ST = Stange tributary) exhibiting the highest flow speeds (*c.* 500–1000 m a<sup>-1</sup>; see Fig. 3a for locations). The ST07 and ST08 ice streams had little impact on the main ice shelf because they terminate at the south ice front which is largely independent of the rest of SIS. Ice speed reduced as the ice flowed between Spaatz Island and Smyley Island towards the north ice front, impinging on slow moving ice from Smyley Island.

Over much of the ice shelf, no significant changes in flow speeds were found (Fig. 3c). However, two significant changes were observed towards the south ice front in flow units ST07 and ST08 (Fig. 3d). First, the majority of this section has slowed by up to 100 m a<sup>-1</sup>, particularly towards the western edge of the flow units. Second, an increase in flow speed of up to 400 m a<sup>-1</sup> was measured between the English Coast and Case Island.



**Fig. 4a.** Landsat ETM+ scenes showing Stange Ice Shelf *c.* 2010. **b.** Structural overview of SIS *c.* 2010 (FZ = fracture zone). A set of Landsat images showing structural changes near the south ice front between *c.* 2001, *d.* 2004, and *e.* 2009, with clear shearing where flow speed increases in ST07. Rift set 1 and rift set 2 refer to existing and new rift zones. CI = Case Island, RP = Rydberg Peninsula.



**Fig. 5a–o.** Annual surface elevation change ( $dh/dt$ ) measurements for the 13 ERS/Envisat RA crossovers on SIS between 1992 and 2008. Crossover labels are given in a. **p.** Total ice surface elevation change, displayed in metres per annum, for each crossover for the full observation period. See also Fig. 6 and Table III.

### Structural glaciology

Longitudinal structures emanated from the English Coast, Spaatz and Smyley islands, and their associated tributary glaciers (Fig. 4b). The clearest examples can be traced from the part of the grounding zone where ST02–ST05 and the Lidke Ice Stream flow into SIS ('i' in Fig. 4b), extending for 25 km into the ice shelf. Smaller clusters also emanated from ST01 and Hill Glacier on Spaatz Island, from ice flowing off Smyley Island, and in ice feeding the south ice front (ST07 and ST08). The trace of features originating from Smyley Island was limited by extensive fracturing of the ice in this area.

The clearest longitudinal features mark the boundary (sutures) of different units of English Coast tributaries ('ii' in Fig. 4b). Of particular interest are three deformed examples in the centre of the ice shelf. These three features demarcate ice sourced from ST02, ST03 and ST04, respectively. They spread towards their downstream limit and, in one case (ST03), fold back into the ice shelf. Other structures in this area (longitudinal structures) indicate a largely convergent flow regime.

There were also several key zones in which extensive fracturing occurred, in three distinct situations (Fig. 4b). Fracture zones 1 and 2 occurred at the suture of two flow units around headlands. At the grounding zones, these rifts had wide openings and were often filled with brash

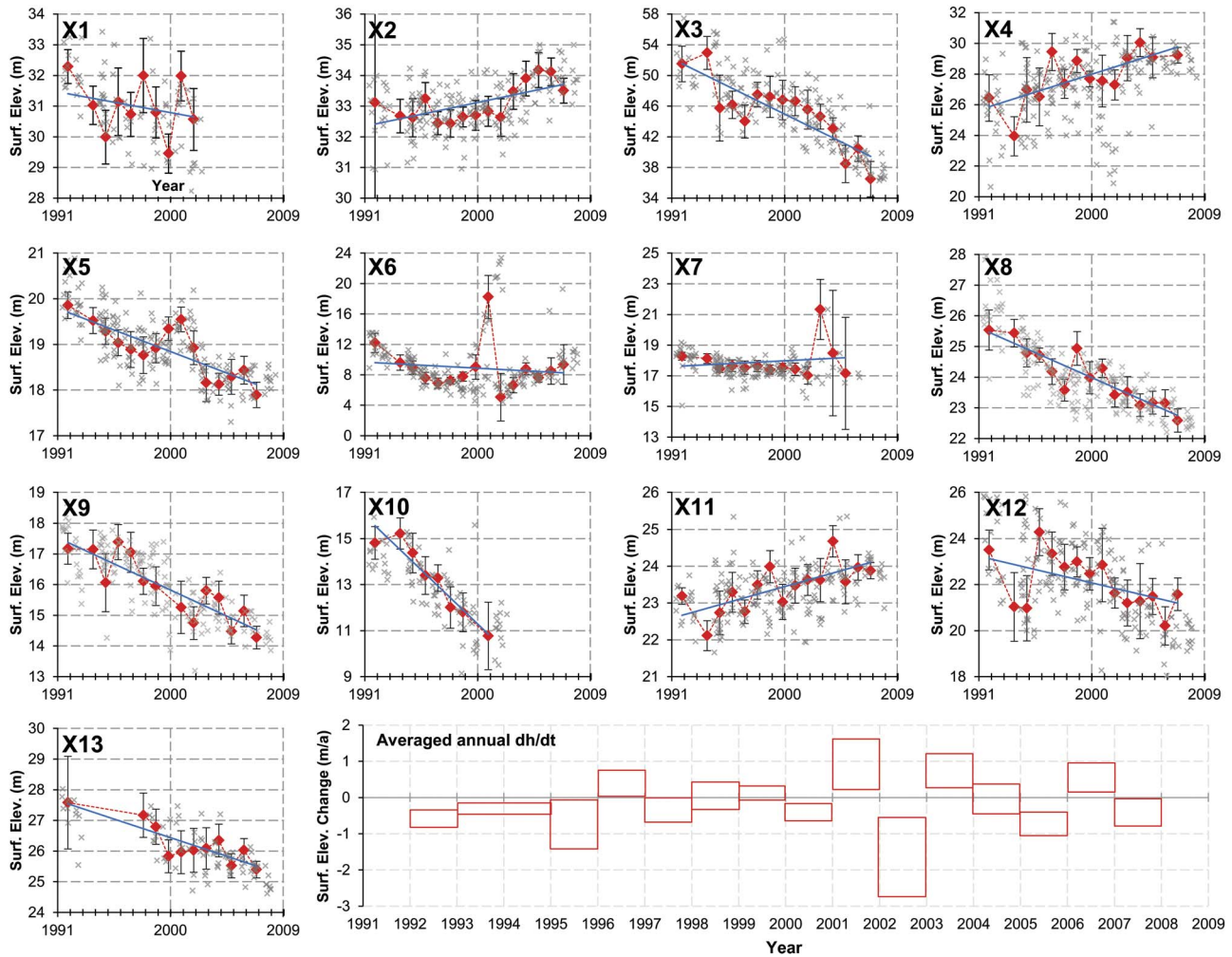
ice and calved blocks. Occasionally, open water was also visible at their base. As these rifts propagate along the ice flow-lines, they sealed to form fracture traces which remained visible in the ice for *c.* 15 km. Rifts in fracture zones 3, 4 and 5 emanated from the grounding zone and advected along-flow to their respective ice fronts. Rifts in these zones also formed at the suture zones between flow unit boundaries at the grounding line, which were typically filled with brash ice and calved blocks from the adjacent rift walls. In fracture zones 3 and 5, in particular, the form of fractures near the grounding line may be the surface expression of basal crevasses. Fracture zones 6 and 7 form at the north ice front and cut back longitudinally and transversely into the ice shelf. Individual features were also observed at the central ice front, but these were limited in quantity, extent and distribution.

### Structural evolution at the south ice front

A time series of structural maps constructed from imagery dating between 1973 and 2011 revealed relatively few significant changes in the number or distribution of structures at the surface of SIS. Those changes that did occur were focused around the three ice fronts, with the most significant of them being observed at the south ice front (Fig. 4c–e).

Tributaries ST07 and ST08 were the main sources of ice at the south ice front and, although this area of the ice





**Fig. 6.** Time series of surface elevation change for the 13 crossover locations on Stange Ice Shelf (X1–X13; see Fig. 5a for location of crossovers). Grey crosses indicate all surface elevation measurements, red diamonds show the mean surface elevation for the corresponding year (measured April–April), black bars show the standard deviation within the annual data, and the blue line indicates the trend over the whole period for each crossover. The box plot shows the shelf-averaged, annual  $dh/dt$ , with the width of each box indicating the length of the time period (April–April; typically one year, with the exception of 1993–95 due to an absence of RA data in 1994), and the height indicating the standard error of all datapoints within the corresponding period.

shelf was heavily fractured during the entire study period, the variable intensity and organization of fractures suggests that the flow regime significantly altered over that time. In particular, during 2001, a calving event ( $58 \text{ km}^2$ ) was observed from ice fed by ST08, and fragmentation of ice derived from ST07 close to the ice front continued with calved blocks and brash ice appearing behind the ice front (rift set 1, Fig. 4c). Most significantly, a new rift zone developed between ST07 and slower moving ice adjacent to Case Island, with their spread and complexity of arrangement increasing away from the grounding line (rift set 2, Fig. 4d). Rift set 2 expanded between 2001 and 2005, as did rift set 1 between ST07 and ST08. By 2011, large areas of the two flow units were fragmented, with calved blocks and brash ice filling

open rifts across large zones of this area of the ice shelf. Calved blocks within the rifts show a clockwise rotation between successive scenes (not shown here), illustrating a shearing motion between flow units. Additionally, the most southerly of this string of rifts had migrated westward and cut across the central region of the ST08 flow unit, effectively isolating a large block of ice close to the south ice front primed for calving.

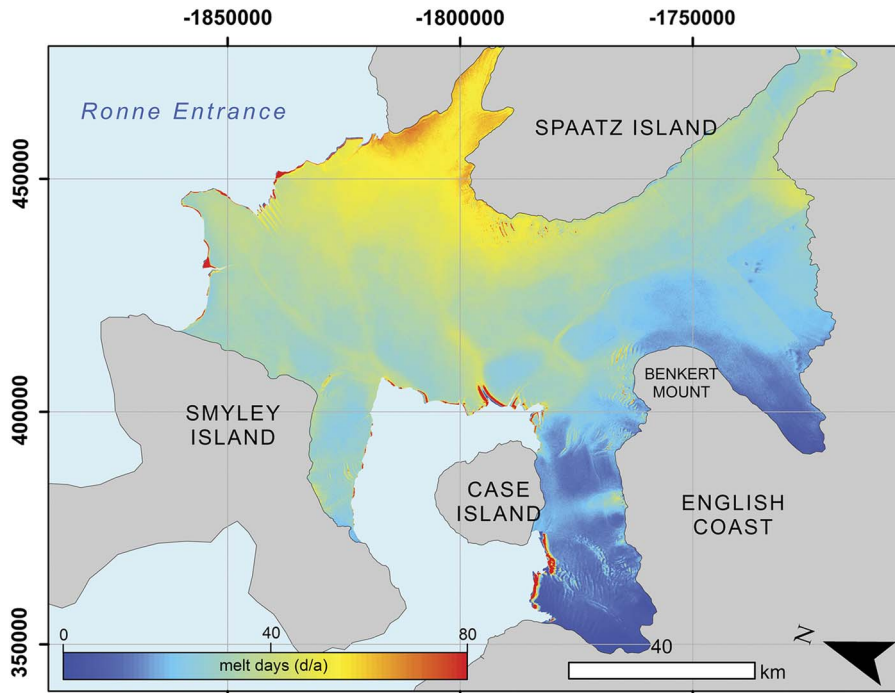
#### *Ice shelf surface elevation change: 1992–2008 (ERS/Envisat RA)*

There was considerable spatial and temporal variability in the surface elevation changes ( $dh/dt$ ) observed at 13 RA crossovers across SIS, (Figs 5 & 6, with the data

**Table III.** Mean dh/dt per annum (SD) per crossover between 1992 and 2008, and mean number of melt days (final column) for the corresponding crossovers.

	1992–93	1993–95	1995–96	1996–97	1997–98	1998–99	1999–2000	2000–01	2001–02	2002–03	2003–04	2004–05	2005–06	2006–07	2007–08	Overall mean per annum (SD) dh/dt	Mean melt days (2006–11)
X1	<i>-0.88</i> (0.55)	<i>-0.68</i> (0.62)	<i>-0.98</i> (0.88)	1.20 (1.10)	<i>-0.33</i> (0.72)	1.60 (1.21)	<i>-1.17</i> (0.83)	<i>-1.40</i> (0.64)	2.57 (0.81)	<i>-1.37</i> (1.01)	–	–	–	–	–	-0.39 (1.41)	33.37
X2	<i>-0.31</i> (4.27)	<i>-0.21</i> (0.55)	<i>-0.06</i> (0.62)	0.59 (0.52)	<i>-0.84</i> (0.37)	<i>-0.01</i> (0.44)	<i>-0.21</i> (0.32)	0.05 (0.48)	0.13 (0.49)	<i>-0.21</i> (0.61)	0.86 (0.58)	0.41 (0.57)	0.22 (0.57)	<i>-0.08</i> (0.45)	<i>-0.53</i> (0.40)	0.03 (0.43)	18.98
X3	<i>-1.10</i> (2.31)	0.72 (2.14)	<i>-7.32</i> (4.30)	0.41 (1.79)	<i>-2.26</i> (2.16)	3.31 (1.60)	<i>-0.30</i> (2.69)	<i>-0.39</i> (2.57)	<i>-0.15</i> (1.89)	<i>-1.05</i> (2.54)	<i>-0.87</i> (1.61)	<i>-1.78</i> (1.42)	<i>-3.68</i> (2.43)	2.69 (1.66)	<i>-3.39</i> (2.32)	<i>-0.69</i> (2.59)	17.98
X4	<i>-0.11</i> (1.52)	<i>-1.24</i> (1.28)	2.95 (2.10)	<i>-0.46</i> (1.89)	2.85 (1.21)	<i>-2.17</i> (0.95)	1.52 (0.76)	<i>-1.14</i> (0.51)	<i>-0.14</i> (1.69)	<i>-0.25</i> (0.98)	1.82 (1.48)	0.96 (0.91)	<i>-0.78</i> (1.32)	–	0.07 (0.51)	0.08 (1.54)	28.66
X5	<i>-0.17</i> (0.29)	<i>-0.17</i> (0.29)	<i>-0.22</i> (0.29)	<i>-0.26</i> (0.28)	<i>-0.15</i> (0.39)	<i>-0.12</i> (0.40)	0.16 (0.32)	0.40 (0.26)	0.22 (0.27)	<i>-0.59</i> (0.37)	<i>-0.80</i> (0.41)	<i>-0.04</i> (0.24)	0.13 (0.38)	0.19 (0.30)	<i>-0.46</i> (0.28)	<i>-0.11</i> (0.32)	48.54
X6	<i>-0.92</i> (1.26)	<i>-0.45</i> (1.01)	<i>-0.69</i> (0.88)	<i>-1.28</i> (0.74)	<i>-0.72</i> (0.68)	0.36 (0.43)	0.50 (0.60)	1.29 (1.61)	8.88 (2.84)	<i>-13.75</i> (3.13)	1.61 (1.00)	2.07 (0.78)	<i>-0.94</i> (0.58)	1.15 (1.74)	0.75 (2.59)	<i>-0.18</i> (4.5)	42.36
X7	<i>-0.26</i> (0.25)	<i>-0.07</i> (0.32)	<i>-0.66</i> (0.23)	0.21 (0.38)	<i>-0.12</i> (0.43)	0.11 (0.36)	<i>-0.25</i> (0.31)	0.14 (0.27)	<i>-0.10</i> (0.40)	<i>-0.36</i> (0.57)	4.65 (1.96)	<i>-2.97</i> (4.09)	<i>-0.89</i> (3.65)	–	–	<i>-0.11</i> (1.63)	51.02
X8	<i>-1.74</i> (0.65)	<i>-0.05</i> (0.45)	<i>-0.65</i> (0.45)	<i>-0.07</i> (0.23)	<i>-0.56</i> (0.42)	<i>-0.61</i> (0.36)	1.34 (0.55)	<i>-0.91</i> (0.52)	0.32 (0.30)	<i>-0.88</i> (0.39)	0.09 (0.50)	<i>-0.44</i> (0.37)	0.07 (0.37)	<i>-0.02</i> (0.43)	<i>-0.50</i> (0.38)	<i>-0.30</i> (0.69)	38.38
X9	<i>-0.73</i> (0.50)	<i>-0.01</i> (0.63)	<i>-1.06</i> (0.95)	1.25 (0.57)	<i>-0.37</i> (0.65)	<i>-0.93</i> (0.42)	<i>-0.16</i> (0.63)	–	<i>-0.34</i> (0.85)	<i>-0.50</i> (0.53)	1.00 (0.43)	<i>-0.24</i> (0.54)	<i>-0.75</i> (0.40)	1.40 (0.52)	<i>-0.72</i> (0.37)	<i>-0.23</i> (0.8)	38.11
X10	0.90 (0.71)	0.21 (0.68)	<i>-0.89</i> (0.86)	<i>-0.93</i> (0.82)	<i>-0.12</i> (0.58)	<i>-1.21</i> (0.90)	<i>-0.22</i> (0.84)	–	<i>-0.51</i> (1.46)	–	–	–	–	–	–	<i>-0.20</i> (0.69)	–
X11	0.33 (0.22)	<i>-0.52</i> (0.40)	0.65 (0.59)	0.58 (0.54)	<i>-0.50</i> (0.32)	0.76 (0.38)	0.47 (0.44)	<i>-1.00</i> (0.48)	0.42 (0.47)	0.16 (0.42)	0.00 (0.59)	1.10 (0.43)	<i>-0.88</i> (0.60)	0.51 (0.35)	<i>-0.08</i> (0.22)	0.01 (0.62)	43.82
X12	<i>-2.43</i> (0.86)	<i>-1.25</i> (1.50)	<i>-0.05</i> (1.42)	3.44 (1.02)	<i>-0.97</i> (0.94)	<i>-0.55</i> (0.99)	0.24 (0.65)	<i>-0.49</i> (0.70)	0.40 (1.60)	<i>-1.16</i> (0.65)	<i>-0.45</i> (1.00)	0.08 (1.63)	0.17 (0.78)	<i>-1.69</i> (0.83)	1.19 (0.71)	<i>-0.42</i> (1.36)	36.49
X13	<i>-0.14</i> (1.51)	–	–	–	–	<i>-0.07</i> (0.72)	<i>-0.36</i> (0.57)	<i>-0.96</i> (0.53)	0.13 (0.70)	0.07 (0.71)	0.06 (0.67)	0.27 (0.53)	<i>-0.66</i> (0.39)	0.71 (0.38)	<i>-0.53</i> (0.27)	<i>-0.18</i> (0.47)	35.72
Overall mean (SD) dh/dt	<i>-0.58</i> (1.12)	<i>-0.31</i> (0.56)	<i>-0.75</i> (1.12)	0.39 (0.54)	<i>-0.34</i> (0.52)	0.04 (0.4)	0.12 (0.62)	<i>-0.40</i> (0.7)	0.91 (0.78)	<i>-1.66</i> (0.89)	0.73 (0.53)	<i>-0.05</i> (1.1)	<i>-0.73</i> (1.06)	0.54 (0.56)	<i>-0.42</i> (0.88)	Total dh/dt -0.17	

Italics indicate periods where dh/dt was negative, dashes indicate no data available for that period, SD = standard deviation.



**Fig. 7.** Mean number of surface melt days per annum on Stange Ice Shelf over the period 2006–12 estimated from Envisat ASAR imagery. Red areas at the ice fronts indicate where ice has been lost to calving.

also summarized in Table III). Between 1992 and 2008, the dominant signal across the ice shelf was surface lowering; this lowering was widespread, but was spatially variable.

There was significant interannual variability in  $dh/dt$  at each crossover (Figs 5 & 6). There was strong surface lowering between 1992 and 1996, followed by a period of positive spatially-averaged  $dh/dt$  (1996–2002). The strongest surface-lowering signal ( $-1.66 \pm 0.32 \text{ m a}^{-1}$ ), averaged over the entire ice shelf, occurred during the period 2002 to 2003, and there was only a weak surface-lowering signal between 2003 and 2008 (Fig. 6).

Only three of the 13 crossovers (X2, X4 and X11) showed a positive elevation trend over the RA observation period (Fig. 6 and Table III (rows)). Of those locations that underwent surface lowering, crossover X3 exhibited the greatest change (*c.*  $-15 \text{ m}$ ). Overall, the estimated shelf-averaged elevation change between 1992 and 2008 was  $-0.17 \pm 0.01 \text{ m a}^{-1}$ .

#### Surface melt days: 2006–12

Figure 7 shows the mean annual number of surface melt days estimated from Envisat ASAR data for 2006, 2007, 2011 and 2012. The estimated number of melt days varied widely across the ice shelf; the highest number of surface melt days was observed adjacent to Spaatz Island (*c.*  $60\text{--}80 \text{ d a}^{-1}$ ) and the lowest number of melt days was adjacent to the English Coast (*c.*  $< 10 \text{ d a}^{-1}$ ) between ST03 and ST08. The rest of the ice shelf surface experienced melting for an average of *c.*  $35 \text{ d a}^{-1}$ .

## Discussion

### *Ice shelf flow stability*

The linear longitudinal structures emanating from the grounding zone of SIS indicate that in the recent past (centuries) it has been a largely stable and convergent system (Fahnestock *et al.* 2000, Glasser *et al.* 2009). Longitudinal structures only show evidence of deformation downstream of the series of ice rumples near the English Coast (Fig. 4). These probably represent localized flow divergence and shear drag around the ice rumples rather than any large-scale flow changes (Hambrey & Dowdeswell 1994).

The most pronounced longitudinal features are linked to flow sutures between ST02 and ST03, then subsequently with ST04. Their along-flow longevity (*c.*  $77 \text{ km}$ , equivalent to *c.*  $320 \text{ years}$  of advection) illustrates the dominance of flow from these active units, which is also illustrated by the current flow regime (Fig. 3b). These features (marked ‘ii’ in Fig. 4b) can be traced with flow from 1974–2011 without undergoing any further deformation, therefore they can be linked to a past change in flow regime. They may represent shear-folds, caused by the faster flowing ice from the English Coast tributaries impinging against the resistant headlands of Spaatz Island and Benkert Mount. The cause of the change to the flow regime is unclear, but it may be linked to increased discharge from the English Coast tributary glaciers or a shift in the stress and strain regimes in the ice shelf following changes to its mass. As there was no further deformation of these structures during our

observation period, we hypothesize that the flow dynamics over much of the ice shelf have remained consistent for *c.* 250 years, i.e. the minimum period of time it would have taken for the youngest fold (see Fig. 4b) to have advected to its current position from the grounding line, assuming present day flow speed and direction.

#### *Brittle deformation and shearing 2001–11*

Between 2001 and 2011, shear fractures propagated at the eastern margin of ST07 (rift set 2, Fig. 4c–e), steadily increasing in quantity, size and distance from the grounding line over this period. Examination of a February 2014 Landsat 8 image (not shown here) confirms that shear fracturing has continued in this region. Our flow speed estimates for the periods *c.* 1989 and *c.* 2010 show a clear increase along this boundary (Fig. 3d). The observed fracturing is probably caused by this increase in speed, coupled with rapid thinning of the ice shelf flowband that feeds the south ice front.

Conversely, flow towards the western side of tributary ST08 decreased over the same period. This is largely due to the grounded ice on Rydberg Peninsula providing a greater lateral drag as the ice shelf thins, as opposed to the shearing between the two floating flowbands discussed above. This situation is similar to that, observed and modelled on the Larsen B Ice Shelf prior to its collapse. Vieli *et al.* (2007) showed that as Larsen B thinned, its flow speed reduced but the sutures between floating flow units became weaker and consequently encouraged further shearing in these zones (Glasser & Scambos 2008). As the south ice front of SIS is largely independent of the rest of the shelf, we do not expect this shearing to induce widespread retreat, but it may lead to enhanced calving and recession in this area.

#### *Surface elevation change and thinning of Stange Ice Shelf*

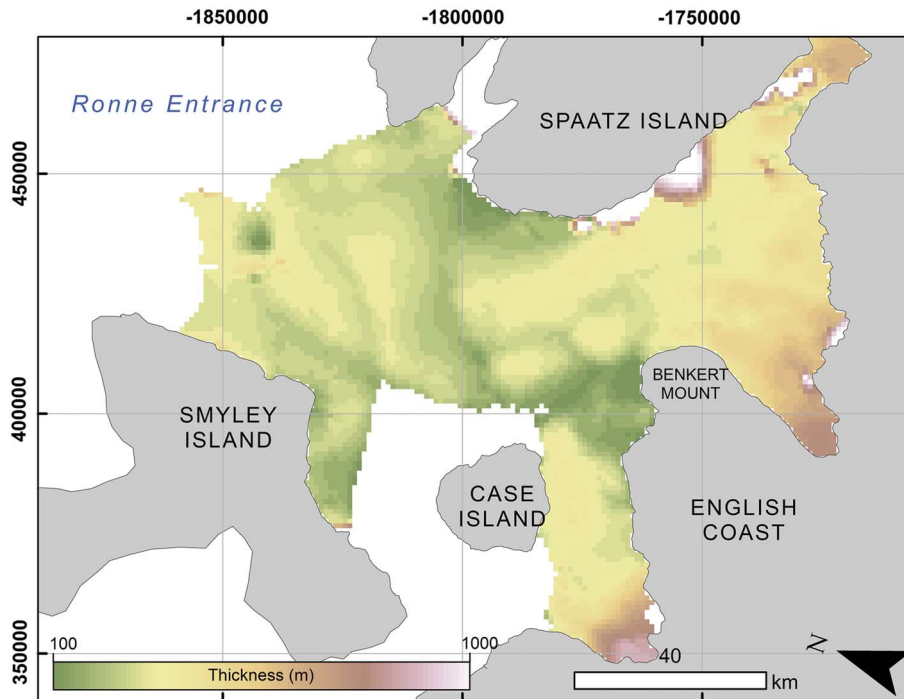
The rate of change of surface elevation ( $dh/dt$ ) of SIS, observed with satellite RA, varies significantly in both time and space (Figs 5 & 6). For the period 1992–2008,  $dh/dt$  averaged over the entire SIS was  $-0.17 \pm 0.01 \text{ m a}^{-1}$ . The greatest linear trend, calculated over the same period, was *c.*  $-0.69 \text{ m a}^{-1}$  recorded at crossover X3 within the flowbands for ST07 and ST08 on the south-eastern SIS (Fig. 6).

The general trend of surface lowering ( $dh/dt < 0$ ) of AP ice shelves has been attributed to a combination of basal melting and firn compaction exceeding ice advection and precipitation (Pritchard *et al.* 2012). Firn compaction has been implicated as the primary component of surface lowering on the northern Larsen C and the remnant Larsen B ice shelves (Holland *et al.* 2011, Pritchard *et al.* 2012), although there are large uncertainties in modelled firn state changes. An increase in the contribution of firn

compaction to surface lowering on these ice shelves is aided by lengthening melt seasons (e.g. Barrand *et al.* 2013). In contrast, a regional coupled ocean/ice shelf model (Holland *et al.* 2010) suggests that mass loss from both George VI and Wilkins ice shelves has been caused by increasing basal melting in response to regional changes in climate, in particular changes in wind stress. Padman *et al.* (2012) also found, from a mass budget of Wilkins Ice Shelf, that long-term surface lowering must be driven primarily by increased basal melting. However, on shorter time intervals (a few years) changes in surface mass balance and firn compaction rate may be significant (Padman *et al.* 2012 fig. 5).

We anticipate, from its setting, that the mass budget for SIS will have more in common with the nearby Wilkins and George VI ice shelves than with Larsen Ice Shelf in the Weddell Sea. Thus a change in delivery of ocean heat to the ice shelf base is the most probable cause of long-term variability of  $dh/dt$ . However, we first consider whether there is any evidence for firn compaction to contribute to  $dh/dt$ . The mean number of surface melt days on SIS (*c.* 35) is less than the 49-day mean value across the rest of the AP (Barrand *et al.* 2013), but the value varies between *c.* 10 and *c.* 80 days of melting in an average year (Fig. 7). The mean annual surface temperature of SIS ranges from  $-11^\circ\text{C}$  to  $-15^\circ\text{C}$  (Morris & Vaughan 2003), and neither summer temperatures nor melt durations over most of SIS are sufficient to induce the formation of melt pools. However, there is a positive trend in the number of melting days over the west AP from 1979–2008 (Tedesco 2009), increasing by between  $0.55 \text{ d a}^{-1}$  and  $1.8 \text{ d a}^{-1}$  for Wilkins and George VI ice shelves, respectively. With similar trends apparent over SIS, we hypothesize that some of the observed surface-elevation lowering is a consequence of increasing rates of firn densification (cf. Holland *et al.* 2011). For regions which have experienced long melt seasons for decades, increasing the number of annual melt days has a negligible effect on elevation as most firn is already compacted each year, thus the firn layer is very thin (Holland *et al.* 2011). Instead, the greatest potential for firn densification is where SIS presently experiences only occasional melting. For SIS, this is the region along the English Coast (Fig. 7).

If firn compaction does play a role in setting  $dh/dt$ , a temporal correlation might be expected between  $dh/dt$  (Figs 5 & 6) and the length of the melt season. Fahnestock *et al.* (2002) reported peninsula-wide surface melting during 1992–93, 1994–95 and 1997–8, and Barrand *et al.* (2013) reported extensive surface melting during 2002–03, with slightly higher-than-average melt during 2007–08 and 2008–09. Although we observed spatially-averaged elevation lowering for all of these periods (Fig. 5, Table III), there is no significant correlation between measured  $dh/dt$  and melt duration at any of the locations



**Fig. 8.** Thickness of Stange Ice Shelf estimated from RA data (Griggs & Bamber 2011).

of the satellite altimeter crossovers. Therefore, we conclude that firn compaction is probably not a primary cause of surface lowering of SIS.

The preceding tentative conclusion suggests that increased basal melting is required to explain observed  $dh/dt$ . This is consistent with regional modelling by Holland *et al.* (2010), analysis of the mass budget for nearby Wilkins Ice Shelf by Padman *et al.* (2012), and a measured rise in ocean temperatures over the continental shelf over the last two decades further north in the Bellingshausen Sea (Meredith & King 2005, Martinson *et al.* 2008). There are no long-term oceanographic measurements available to confirm trends in provision of ocean heat to the base of SIS. However, warm ( $> 1^\circ\text{C}$ ) Circumpolar Deep Water (CDW) reaches the SIS ice fronts at depths  $> 300$  m (see fig. 9a in Padman *et al.* 2012). This warm water fuels a SIS-averaged basal melt rate  $w_b$  of  $3.5 \pm 0.7 \text{ m a}^{-1}$  (Rignot *et al.* 2013, table 1), which is comparable to the rate for George VI and Wilkins ice shelves. The observed time-averaged  $dh/dt$  for SIS ( $-0.17 \text{ m a}^{-1}$  in our estimates based on RA for 1992–2008, and  $-0.07 \text{ m a}^{-1}$  reported by Rignot *et al.* (2013) based on laser altimetry for 2003–08) corresponds to around a 20–40% excess in  $w_b$  relative to the value required for steady-state. This amount of temporal change in  $w_b$  is consistent with the modelled variability of George VI Ice Shelf melting reported by Holland *et al.* (2010).

As with firn compaction, one potential validation for the role of basal melting in  $dh/dt$  is the interannual variability of the proposed forcing (in this case, circulation of ocean heat) and measured  $dh/dt$ . The inflow of warm

CDW near the sea floor provides the thermal forcing required to melt ice near the grounding zone, and CDW flux is expected to vary in this region (Holland *et al.* 2010). Furthermore, changes in basal melt rate may result from changes in depth of the thermocline separating the WDW from the cold upper ocean layers (Padman *et al.* 2012). The latter process is suggested by the existence of very cold water ( $< 0^\circ\text{C}$ ) at the depth of the ice draft near the three SIS ice fronts (*c.* 200 m; Fig. 8; see fig. 9b in Padman *et al.* 2012). Regions of the ice shelf near the ice fronts experience a wide range of  $dh/dt$ , including both lowering and increase (Figs 5 & 6), which may reflect variability of thermocline depth. This may, in turn, be primarily associated with changing wind-stress patterns driven by the En Niño–Southern Oscillation (ENSO) (see Dutrieux *et al.* 2014).

Holland *et al.* (2010), in their numerical model of the Bellingshausen Sea, found that most rapid increases in modelled basal melt rate for George VI Ice Shelf occurred during 1989–92 and 2004–06, corresponding to periods of elevated CDW layers in Ronne Entrance (Holland *et al.* 2010 fig. 7). The timing of these events is well-matched with the observed surface lowering for SIS ( $-0.58 \text{ m a}^{-1}$ , and  $-0.73 \text{ m a}^{-1}$  respectively; Fig. 5, Table III) and, given that the draft of SIS at its north and south fronts (*c.* 200 m and *c.* 340 m, Fig. 8) are greater than that at the southern margin of George VI Ice Shelf (*c.* 180 m), the raising of CDW may have also enhanced the basal melting from SIS. Due to the relatively shallow draft of much of SIS in relation to the depth of cold surface water, SIS may also experience a significant seasonal cycle in basal melting

regardless of the modulation of the CDW inflow, as reported for the relatively shallow Wilkins Ice Shelf (Dinniman *et al.* 2012, Padman *et al.* 2012).

In conclusion, based on comparisons with other studies and regional models, the most probable cause for SIS surface lowering from 1992–2008 is an increase in basal melting caused by changes in ocean circulation rather than an increase in firn compaction. This suggests that, in assessing the future stability of SIS, the focus should be on mechanisms for changing the ocean heat flux under the ice shelf.

### Summary

Remote-sensing data for the period 1973–2011 has provided a detailed description of the structural and dynamic regimes of SIS. Our main observations were as follows:

- i) Most of the ice shelf's flow regime has changed little over the last 250 years, since the formation of the youngest fold structure in ice flowing from the English Coast.
- ii) Flow speed changes were concentrated near the south ice front.
- iii) Structural evolution was most evident at the south ice front, where shear fractures developed between 2001 and 2011 at the eastern boundary of ST07.
- iv) Widespread surface lowering was observed across the ice shelf ( $-0.17 \pm 0.01 \text{ m a}^{-1}$ ), although there was large temporal and spatial variability. The greatest changes occurred in areas with less surface melting per annum (on average).
- v) Mean annual surface melt days ranged from *c.* 60–80 days in the northern portion, *c.* 35 days over much of the central section and < 10 days along the southern margins.

We suggest that shear fractures develop near the south ice front as a consequence of ice shelf thinning. Flow speed here increases along the eastern suture of ST07, but decreases where ST08 becomes subjected to increased side drag along Rydberg Peninsula. Overall, SIS is stable and no immediate break-up as observed elsewhere on the AP is expected. However, regular recession of the north ice front, a largely concave profile and diverging embayment preconditions the main body of SIS for rapid retreat when critical thresholds are met; the south ice front acts as an indicator that glaciological change is probable in this region. In conclusion, glaciological changes observed here relate to changes in ocean circulation rather than the atmosphere, thus future research should focus on mechanisms for changing the ocean heat flux beneath the ice shelf cavities.

### Acknowledgements

We thank Jay Zwally's Ice Altimetry group at the NASA Goddard Space Flight Center for processing, archiving and distributing their RA datasets for all satellite radar altimeter missions (see <http://icesat4.gsfc.nasa.gov>). HAF and LP were supported by two awards from NASA (NNX10AG19G and NNX13AP60G). The authors thank the editors and the two anonymous reviewers for their comments that greatly improved the manuscript.

### Author contributions

Holt carried out the structural mapping, velocity calculation and re-analysis of RA data, and wrote the majority of the paper unless stated below. Glasser was involved with developing the project's initial ideas, provided expert guidance and edited the manuscript. Fricker, Padman and Siegfried supplied the RA data and offered guidance on the interpretation and discussion. Fricker edited the final manuscript and Padman contributed heavily to the final section of the discussion as well as editing the final manuscript. Luckman supplied the surface melt data and contributed to the data and methods. King contributed to the structural interpretation. Quincey was involved with the initial project and provided expert guidance in its inception.

### References

- BARRAND, N.E., VAUGHAN, D.G., STEINER, N., TEDESCO, M., MUNNEKE, P.K., VAN DEN BROEKE, M.R. & HOSKING, J.S. 2013. Trends in Antarctic Peninsula surface melting conditions from observations and regional climate modeling. *Journal of Geophysical Research - Earth Surface*, **118**, 315–330.
- BRAUN, M., HUMBERT, A. & MOLL, A. 2009. Changes of Wilkins Ice Shelf over the past 15 years and inferences on its stability. *Cryosphere*, **3**, 41–56.
- COOK, A.J. & VAUGHAN, D.G. 2010. Overview of areal changes of the ice shelves on the Antarctic Peninsula over the past 50 years. *Cryosphere*, **4**, 77–98.
- COOPER, A.P.R. 1997. Historical observations of Prince Gustav Ice Shelf. *Polar Record*, **33**, 285–294.
- DINNIMAN, M.S., KLINCK, J.M. & HOFMANN, E.E. 2012. Sensitivity of Circumpolar Deep Water transport and ice shelf basal melt along the west Antarctic Peninsula to changes in the winds. *Journal of Climate*, **25**, 4799–4816.
- DOAKE, C.S.M. & VAUGHAN, D.G. 1991. Rapid disintegration of the Wordie Ice Shelf in response to atmospheric warming. *Nature*, **350**, 328–330.
- DOAKE, C.S.M., CORR, H.F.J., ROTT, H., SKVARCA, P. & YOUNG, N.W. 1998. Breakup and conditions for stability of the northern Larsen Ice Shelf, Antarctica. *Nature*, **391**, 778–780.
- DUTRIEUX, P., DE RYDT, J., JENKINS, A., HOLLAND, P.R., HA, H.K., LEE, S.H., STEIG, E.J., DING, Q.H., ABRAHAMSEN, E.P. & SCHRÖDER, M. 2014. Strong sensitivity of Pine Island Ice-Shelf melting to climatic variability. *Science*, **343**, 174–178.
- FAHNESTOCK, M.A., ABDALATI, W. & SHUMAN, C.A. 2002. Long melt seasons on ice shelves of the Antarctic Peninsula: an analysis using satellite-based microwave emission measurements. *Annals of Glaciology*, **34**, 127–133.

- FAHNESTOCK, M.A., SCAMBOS, T.A., BINDSCHADLER, R.A. & KVARAN, G. 2000. A millennium of variable ice flow recorded by the Ross Ice Shelf, Antarctica. *Journal of Glaciology*, **46**, 652–664.
- FOX, A.J. & VAUGHAN, D.G. 2005. The retreat of Jones Ice Shelf, Antarctic Peninsula. *Journal of Glaciology*, **51**, 555–560.
- FRICKER, H.A. & PADMAN, L. 2012. Thirty years of elevation change on Antarctic Peninsula ice shelves from multitemporal satellite radar altimetry. *Journal of Geophysical Research - Oceans*, **117**, 10.1029/2011JC007126.
- FYKE, J.G., CARTER, L., MACKINTOSH, A., WEAVER, A.J. & MEISSNER, K.J. 2010. Surface melting over ice shelves and ice sheets as assessed from modeled surface air temperatures. *Journal of Climate*, **23**, 1929–1936.
- GLASSER, N.F. & SCAMBOS, T.A. 2008. A structural glaciological analysis of the 2002 Larsen B ice-shelf collapse. *Journal of Glaciology*, **54**, 3–16.
- GLASSER, N.F., SCAMBOS, T.A., BOHLANDER, J., TRUFFER, M., PETTIT, E. & DAVIES, B.J. 2011. From ice-shelf tributary to tidewater glacier: continued rapid recession, acceleration and thinning of Røss Glacier following the 1995 collapse of the Prince Gustav Ice Shelf, Antarctic Peninsula. *Journal of Glaciology*, **57**, 397–406.
- GLASSER, N.F., KULESSA, B., LUCKMAN, A., JANSEN, D., KING, E.C., SAMMONDS, P.R., SCAMBOS, T.A. & JEZEK, K.C. 2009. Surface structure and stability of the Larsen C ice shelf, Antarctic Peninsula. *Journal of Glaciology*, **55**, 400–410.
- GRIGGS, J.A. & BAMBER, J.L. 2011. Antarctic ice-shelf thickness from satellite radar altimetry. *Journal of Glaciology*, **57**, 485–498.
- HAMBREY, M.J. & DOWDESWELL, J.A. 1994. Flow regime of the Lambert Glacier-Amery Ice Shelf system, Antarctica: structural evidence from Landsat imagery. *Annals of Glaciology*, **20**, 401–406.
- HOLLAND, P.R., JENKINS, A. & HOLLAND, D.M. 2010. Ice and ocean processes in the Bellingshausen Sea, Antarctica. *Journal of Geophysical Research - Oceans*, **115**, 10.1029/2008JC005219.
- HOLLAND, P.R., CORR, H.F.J., PRITCHARD, H.D., VAUGHAN, D.G., ARTHURN, R.J., JENKINS, A. & TEDESCO, M. 2011. The air content of Larsen Ice Shelf. *Geophysical Research Letters*, **38**, 10.1029/2011GL047245.
- HOLT, T.O., GLASSER, N.F., QUINCEY, D.J. & SIEGFRIED, M.R. 2013. Speedup and fracturing of George VI Ice Shelf, Antarctic Peninsula. *Cryosphere*, **7**, 797–816.
- HUGHES, T. 1983. On the disintegration of ice shelves: the role of fracture. *Journal of Glaciology*, **29**, 98–117.
- KING, J.C. 1994. Recent climate variability in the vicinity of the Antarctic Peninsula. *International Journal of Climatology*, **14**, 357–369.
- LUCCHITTA, B.K. & ROSANOVA, C.E. 1998. Retreat of northern margins of George VI and Wilkins ice shelves, Antarctic Peninsula. *Annals of Glaciology*, **27**, 41–46.
- LUCKMAN, A., ELVIDGE, A., JANSEN, D., KULESSA, B., MUNNEKE, P.K., KING, J. & BARRAND, N.E. 2014. Surface melt and ponding on Larsen C Ice Shelf and the impact of foehn winds. *Antarctic Science*, **26**, 10.1017/S0954102014000339.
- MACAYEAL, D.R., SCAMBOS, T.A., HULBE, C.L. & FAHNESTOCK, M.A. 2003. Catastrophic ice-shelf break-up by an ice-shelf-fragment-capsize mechanism. *Journal of Glaciology*, **49**, 22–36.
- MARTINSON, D.G., STAMMERJOHN, S.E., IANNUZZI, R.A., SMITH, R.C. & VERNET, W. 2008. Western Antarctic Peninsula physical oceanography and spatio-temporal variability. *Deep-Sea Research II - Topical Studies in Oceanography*, **55**, 1964–1987.
- MERCER, J.H. 1978. West Antarctic Ice Sheet and CO<sub>2</sub> greenhouse effect: a threat of disaster. *Nature*, **271**, 321–325.
- MEREDITH, M.P. & KING, J.C. 2005. Rapid climate change in the ocean west of the Antarctic Peninsula during the second half of the 20th century. *Geophysical Research Letters*, **32**, 10.1029/2005GL024042.
- MORRIS, E.M. & VAUGHAN, D.G. 2003. Spatial and temporal variation of surface temperature on the Antarctic Peninsula and the limit of viability of ice shelves. *Antarctic Research Series*, **79**, 61–68.
- NAGLER, T. & ROTT, H. 2000. Retrieval of wet snow by means of multitemporal SAR data. *IEEE Transactions on Geoscience and Remote Sensing*, **38**, 754–765.
- PADMAN, L., COSTA, D.P., DINNIMAN, M.S., FRICKER, H.A., GOEBEL, M.E., HUCKSTADT, L.A., HUMBERT, A., JOUGHIN, I., LENAERTS, J.T.M., LIGTENBERG, S.R.M., SCAMBOS, T. & VAN DEN BROEKE, M.R. 2012. Oceanic controls on the mass balance of Wilkins Ice Shelf, Antarctica. *Journal of Geophysical Research - Oceans*, **117**, 10.1029/2011JC007301.
- PRITCHARD, H.D., LIGTENBERG, S.R.M., FRICKER, H.A., VAUGHAN, D.G., VAN DEN BROEKE, M.R. & PADMAN, L. 2012. Antarctic ice-sheet loss driven by basal melting of ice shelves. *Nature*, **484**, 502–505.
- RACK, W. & ROTT, H. 2004. Pattern of retreat and disintegration of the Larsen B ice shelf, Antarctic Peninsula. *Annals of Glaciology*, **39**, 505–510.
- RACK, W., DOAKE, C.S.M., ROTT, H., SIEGEL, A. & SKVARCA, P. 2000. Interferometric analysis of the deformation pattern of the northern Larsen Ice Shelf, Antarctic Peninsula, compared to field measurements and numerical modeling. *Annals of Glaciology*, **31**, 205–210.
- REYNOLDS, J.M. 1988. The structure of Wordie Ice Shelf, Antarctic Peninsula. *British Antarctic Survey Bulletin*, No. 80, 57–64.
- RIGNOT, E., MOUGINOT, J. & SCHEUCHL, B. 2011. *MEaSURES InSAR-based Antarctica ice velocity map*. Boulder, CO: National Snow and Ice Data Center. Available at: <http://dx.doi.org/10.5067/MEASURES/CRYOSPHERE/nsidc-0484.001>.
- RIGNOT, E., JACOBS, S., MOUGINOT, J. & SCHEUCHL, B. 2013. Ice-shelf melting around Antarctica. *Science*, **341**, 266–270.
- ROBERTSON, R., VISBECK, M., GORDON, A.L. & FAHRBACH, E. 2002. Long-term temperature trends in the deep waters of the Weddell Sea. *Deep-Sea Research II - Topical Studies in Oceanography*, **49**, 4791–4806.
- ROTT, H., SKVARCA, P. & NAGLER, T. 1996. Rapid collapse of northern Larsen Ice Shelf, Antarctica. *Science*, **271**, 788–792.
- SCAMBOS, T., HULBE, C. & FAHNESTOCK, M. 2003. Climate-induced ice shelf disintegration in the Antarctic Peninsula. *Antarctic Research Series*, **79**, 79–92.
- SCAMBOS, T.A., BOHLANDER, J.A., SHUMAN, C.A. & SKVARCA, P. 2004. Glacier acceleration and thinning after ice shelf collapse in the Larsen B embayment, Antarctica. *Geophysical Research Letters*, **31**, 10.1029/2004GL020670.
- SCAMBOS, T.A., HULBE, C., FAHNESTOCK, M. & BOHLANDER, J. 2000. The link between climate warming and break-up of ice shelves in the Antarctic Peninsula. *Journal of Glaciology*, **46**, 516–530.
- SCAMBOS, T.A., HARAN, T.M., FAHNESTOCK, M.A., PAINTER, T.H. & BOHLANDER, J. 2007. MODIS-based Mosaic of Antarctica (MOA) data sets: continent-wide surface morphology and snow grain size. *Remote Sensing of Environment*, **111**, 242–257.
- SCAMBOS, T., FRICKER, H.A., LIU, C.C., BOHLANDER, J., FASTOOK, J., SARGENT, A., MASSOM, R. & WU, A.M. 2009. Ice shelf disintegration by plate bending and hydro-fracture: satellite observations and model results of the 2008 Wilkins Ice Shelf break-ups. *Earth and Planetary Science Letters*, **280**, 51–60.
- SHEPHERD, A., WINGHAM, D. & RIGNOT, E. 2004. Warm ocean is eroding West Antarctic Ice Sheet. *Geophysical Research Letters*, **31**, 10.1029/2004GL021106.
- SHEPHERD, A., WINGHAM, D., PAYNE, T. & SKVARCA, P. 2003. Larsen Ice Shelf has progressively thinned. *Science*, **302**, 856–859. Correction: *Science*, **303**, 1612–1612.

- STAMMERJOHN, S.E., MARTINSON, D.G., SMITH, R.C., YUAN, X. & RIND, D. 2008. Trends in Antarctic annual sea ice retreat and advance and their relation to El Niño–Southern Oscillation and Southern Annular Mode variability. *Journal of Geophysical Research - Oceans*, **113**, 10.1029/2007JC004269.
- TEDESCO, M. 2009. Assessment and development of snowmelt retrieval algorithms over Antarctica from K-band spaceborne brightness temperature (1979–2008). *Remote Sensing of Environment*, **113**, 979–997.
- TEDESCO, M. & MONAGHAN, A.J. 2009. An updated Antarctic melt record through 2009 and its linkages to high-latitude and tropical climate variability. *Geophysical Research Letters*, **36**, 10.1029/2009GL039186.
- THOMAS, R., DAVIS, C., FREDERICK, E., KRABILL, W., LI, Y.H., MANIZADE, S. & MARTIN, C. 2008. A comparison of Greenland ice-sheet volume changes derived from altimetry measurements. *Journal of Glaciology*, **54**, 203–212.
- TRUSEL, L.D., FREY, K.E. & DAS, S.B. 2012. Antarctic surface melting dynamics: enhanced perspectives from radar scatterometer data. *Journal of Geophysical Research - Earth Surface*, **117**, 10.1029/2011JF002126.
- VIEL, A., PAYNE, A.J., SHEPHERD, A. & DU, Z. 2007. Causes of pre-collapse changes of the Larsen B Ice Shelf: numerical modelling and assimilation of satellite observations. *Earth and Planetary Science Letters*, **259**, 297–306.
- WATSON, D.F. 1992. *Contouring: a guide to the analysis and display of spatial data*. Oxford: Pergamon, 340 pp.