

Aberystwyth University

Thin-layer effects in glaciological seismic amplitude-versus-angle (AVA) analysis: implications for characterising a subglacial till unit, Russell Glacier, West Greenland

Booth, A. D.; Clark, R.A.; Kulesa, B.; Murray, T.; Carter, J.; Doyle, Samuel Huckerby; Hubbard, Alun Lloyd

Published in:
Cryosphere

DOI:
[10.5194/tc-6-909-2012](https://doi.org/10.5194/tc-6-909-2012)

Publication date:
2012

Citation for published version (APA):

Booth, A. D., Clark, R. A., Kulesa, B., Murray, T., Carter, J., Doyle, S. H., & Hubbard, A. L. (2012). Thin-layer effects in glaciological seismic amplitude-versus-angle (AVA) analysis: implications for characterising a subglacial till unit, Russell Glacier, West Greenland. *Cryosphere*, 6, 909-922. <https://doi.org/10.5194/tc-6-909-2012>

General rights

Copyright and moral rights for the publications made accessible in the Aberystwyth Research Portal (the Institutional Repository) are retained by the authors and/or other copyright owners and it is a condition of accessing publications that users recognise and abide by the legal requirements associated with these rights.

- Users may download and print one copy of any publication from the Aberystwyth Research Portal for the purpose of private study or research.
- You may not further distribute the material or use it for any profit-making activity or commercial gain
- You may freely distribute the URL identifying the publication in the Aberystwyth Research Portal

Take down policy

If you believe that this document breaches copyright please contact us providing details, and we will remove access to the work immediately and investigate your claim.

tel: +44 1970 62 2400
email: is@aber.ac.uk



Thin-layer effects in glaciological seismic amplitude-versus-angle (AVA) analysis: implications for characterising a subglacial till unit, Russell Glacier, West Greenland

A. D. Booth^{1,2}, R. A. Clark³, B. Kulesa¹, T. Murray¹, J. Carter², S. Doyle⁴, and A. Hubbard⁴

¹Glaciology Group, Department of Geography, College of Science, Swansea University, Singleton Park, Swansea, SA2 8PP, UK

²Department of Earth Science and Engineering, Imperial College London, South Kensington Campus, London, SW7 2AZ, UK

³Institute of Geophysics and Tectonics, School of Earth and Environment, University of Leeds, Woodhouse Lane, Leeds, LS2 9JT, UK

⁴Institute of Geography and Earth Sciences, Aberystwyth University, Llandinam Building, Penglais Campus, Aberystwyth, SY23 3DB, UK

Correspondence to: A. D. Booth (a.booth@imperial.ac.uk)

Received: 17 January 2012 – Published in The Cryosphere Discuss.: 20 February 2012

Revised: 20 July 2012 – Accepted: 24 July 2012 – Published: 16 August 2012

Abstract. Seismic amplitude-versus-angle (AVA) methods are a powerful means of quantifying the physical properties of subglacial material, but serious interpretative errors can arise when AVA is measured over a thinly-layered substrate. A substrate layer with a thickness less than 1/4 of the seismic wavelength, λ , is considered “thin”, and reflections from its bounding interfaces superpose and appear in seismic data as a single reflection event. AVA interpretation of subglacial till can be vulnerable to such thin-layer effects, since a lodged (non-deforming) till can be overlain by a thin (metre-scale) cap of dilatant (deforming) till. We assess the potential for misinterpretation by simulating seismic data for a stratified subglacial till unit, with an upper dilatant layer between 0.1–5.0 m thick ($\lambda/120$ to $> \lambda/4$, with $\lambda = 12$ m). For dilatant layers less than $\lambda/6$ thick, conventional AVA analysis yields acoustic impedance and Poisson’s ratio that indicate contradictory water saturation. A thin-layer interpretation strategy is proposed, that accurately characterises the model properties of the till unit. The method is applied to example seismic AVA data from Russell Glacier, West Greenland, in which characteristics of thin-layer responses are evident. A subglacial till deposit is interpreted, having lodged till (acoustic impedance = $4.26 \pm 0.59 \times 10^6 \text{ kg m}^{-2} \text{ s}^{-1}$) underlying a water-saturated dilatant till layer (thickness < 2 m, Poisson’s

ratio ~ 0.5). Since thin-layer considerations offer a greater degree of complexity in an AVA interpretation, and potentially avoid misinterpretations, they are a valuable aspect of quantitative seismic analysis, particularly for characterising till units.

1 Introduction

Seismic reflection methods provide a powerful means of imaging the bed of glaciers and ice masses, and are increasingly used for quantifying substrate material properties (e.g. Smith, 1997; Nolan and Echelmeyer, 1999; Anandakrishan, 2003; Peters et al., 2007, 2008). Characterising the physical properties of subglacial material is a key research goal for improving the representation of basal dynamics in predictive ice-flow models (e.g. Pattyn, 1996; Payne, 1999; Truffer et al., 2001; Pimentel et al., 2010; Sergienko and Hulbe, 2011). A hard-bedded glacier is associated with different ice-flow regimes to a soft, sediment-bedded glacier, with the presence of englacial debris and/or subglacial water significantly impacting flow (Iverson et al., 2003; Cohen et al., 2005; Emerson and Rempel, 2007). Changes in the hydrological state of the subglacial system are invoked

in the onset of glacier surging (Murray et al., 2003; Woodward et al., 2003; Burgess et al., 2012). Furthermore, the style and efficiency of subglacial drainage is also influenced by substrate properties, with Darcian and canal flow regimes proposed for sediment substrates (Clarke, 1987; Walder and Fowler, 1994; Ng, 2000), and linked cavities and ice channels for hard-bedded glaciers (Röthlisberger, 1972; Iken and Bindschadler, 1986; Willis et al., 2012). Measurements of the hardness of previously-glaciated surfaces have also been used to inform palaeo-flow reconstructions (e.g. Reinardy et al., 2011).

Amplitude-versus-angle (AVA) analysis of seismic data is particularly useful, delivering at least two mechanical properties of a material, specifically acoustic impedance and Poisson's ratio (Aki and Richards, 2002; Gretener, 2003). AVA concerns the same seismic characteristics and principles to amplitude-versus-offset, AVO, but expresses the variation of reflectivity with actual incidence angle rather than its offset proxy. The method has had notable use in glaciology for identifying subglacial lakes (Peters et al., 2008), thick sequences of dilatant (deforming) till (Anandakrishnan, 2003; Peters et al., 2007) and transient changes in subglacial hydrology (Nolan and Echelmeyer, 1999; Kulesa et al., 2008).

Seismic AVA analysis has several key assumptions, including the requirement that a reflective interface separates two otherwise infinite half-spaces. The presence of thin-layering at that interface is a significant complicating factor in AVA interpretation (Swan, 1991; Bakke and Ursin, 1998; Nolan and Echelmeyer, 1999), as this condition can often be violated when surveying over a layered till. A till deposit can be structurally complex, with abrupt variations (both vertical and lateral) in physical properties (Evans et al., 2006) that, critically, are on a smaller spatial scale than the seismic wavelength (~ 10 m in glaciology, depending on source characteristics and ice thickness; Smith, 2007). We therefore present an investigation of the effect of thin-layering on AVA analysis.

Although AVA practitioners within glaciology may be aware of the potential for thin-layer problems (e.g. Richards, 1988; Nolan and Echelmeyer, 1999), there have been few reported investigations of alternate strategies for interpreting the resulting AVA responses. We therefore review AVA theory and consider the definition of "thin", from a seismic perspective. We then show how thin-layers distort an AVA response, using synthetic seismic data that simulate an acquisition over dilatant (deforming) and lodged (non-deforming) subglacial till layers (e.g. Evans et al., 2006; Peters et al., 2007). We propose an interpretation strategy that honours the structure of the till deposit, and apply this to seismic data acquired on the Russell Glacier outlet of the West Greenland Ice Sheet. By acknowledging the potential for a thinly-layered structure, we are able to recover more information from the AVA response than is possible with conventional interpretation methods.

2 Reflection coefficients and amplitude-versus-angle responses

A seismic wavelet undergoes partial reflection when it encounters an interface between contrasting acoustic properties. The fraction of wavelet amplitude reflected, termed the "reflection coefficient", R , is influenced both by the magnitude of that contrast (specifically in terms of the velocities of P- (pressure) and S- (shear) waves, density and, to a lesser extent, seismic quality factor, Q), and the incidence angle at which the wavelet arrives. For a wavelet propagating at normal incidence (i.e. $\theta = 0$) from the i th to the j th layer, the P-wave reflection coefficient is a simple function of the acoustic impedance within each layer:

$$R(0) = \frac{Z_j - Z_i}{Z_j + Z_i} \quad (1)$$

where Z denotes acoustic impedance (the product of density and P-wave velocity, v_P). Seismic quality factor, Q , also contributes to the observable reflectivity of an interface, although only significantly where the Q -contrast exceeds an order of magnitude (Bourbié and Nur, 1984; Odebeatu et al., 2006). Two proposed mechanisms for Q to contribute to the apparent reflectivity of an interface are (a) frequency dependency of the reflection coefficient, since different frequency components of a wavelet propagate at different velocities in dispersive materials (Xu et al., 2011), and (b) introduction of a phase lag into the recorded waveform (Lines et al., 2008), since the reaction time of a high-to-low- Q interface is frequency-dependant (Quintal et al., 2009; Morozov, 2011). Q -based reflectivity is undoubtedly an important consideration in quantitative seismic interpretation but, at this stage of analysis, we assume small Q -contrasts allowing the associated reflectivity contributions to be neglected.

In the general case of non-normal incidence (i.e. $\theta > 0$), a fraction of the incident P-wave is also converted to S-wave energy, hence reflectivity is also influenced by Poisson's ratio, σ , a measure of the stiffness of a material (Mavko et al., 2009):

$$\sigma = \frac{(v_P/v_S)^2 - 2}{2((v_P/v_S)^2 - 1)}, \quad (2)$$

where v_S is S-wave velocity. As v_S approaches zero, its velocity through a fluid, Poisson's ratio reaches its theoretical maximum of 0.5. The general expression for reflection coefficient with incidence angle, $R(\theta)$, is the "Knott-Zoeppritz equations", a complicated, non-linear system of angle and acoustic properties (Aki and Richards, 2002) and the variation of reflection coefficient with an angle is termed the "AVA response".

Figure 1 shows AVA responses modelled at glacier beds underlain by material of varying (a) acoustic impedance and (b) Poisson's ratio (see Table 1). Throughout, the overlying ice has an acoustic impedance of

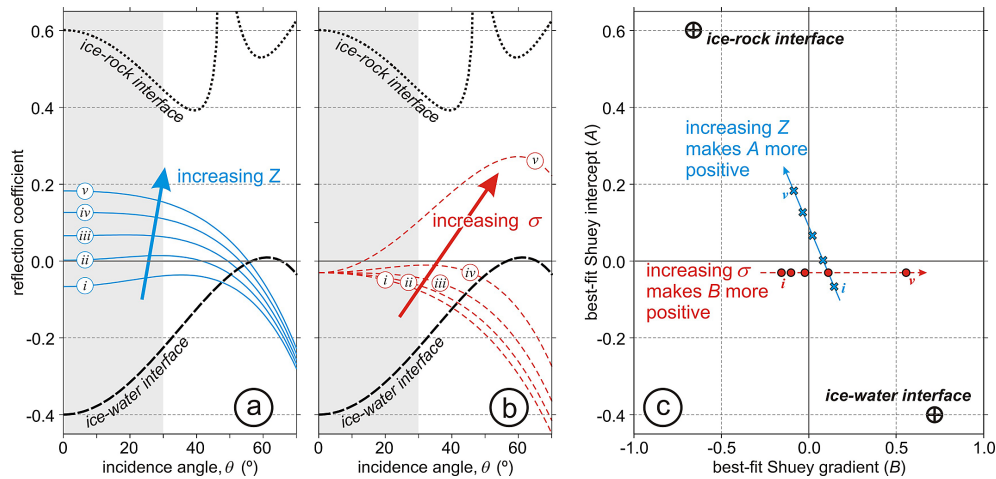


Fig. 1. Example amplitude-versus-angle (AVA) responses for glacier beds overlying till units with acoustic impedance and Poisson’s ratio as specified in Table 1. **(a)** Acoustic impedance is varied, while Poisson’s ratio is fixed. **(b)** Poisson’s ratio is varied while acoustic impedance is fixed. Black curves denote example cases of ice-water and ice-rock interfaces (the latter undergoing critical refraction at $\sim 47^\circ$). **(c)** AVA cross-plot of best-fit Shuey terms, A and B , from a linear regression of the Knott-Zoeppritz equations. Blue crosses plot data from **(a)**, red circles plot data from **(b)**. Black curves and symbols show reference models of ice-water and ice-bedrock interfaces. Best-fit Shuey terms are calculated only for the first 30° of incidence (grey shading in **a** and **b**), and have negligible uncertainty.

Table 1. Model properties for example AVA curves in Fig. 1. In Fig. 1a, Poisson’s ratio (σ) is fixed at 0.4; in Fig. 1b, acoustic impedance (Z) is fixed at $3.3 \times 10^6 \text{ kg m}^{-2} \text{ s}^{-1}$. Acoustic impedance for ice, bedrock and water are $3.5 \times 10^6 \text{ kg m}^{-2} \text{ s}^{-1}$, $14.0 \times 10^6 \text{ kg m}^{-2} \text{ s}^{-1}$ and $1.5 \times 10^6 \text{ kg m}^{-2} \text{ s}^{-1}$, respectively; corresponding Poisson’s ratios are 0.333, 0.296 and 0.500 (e.g., Peters et al., 2008).

Model	Fig. 1a; σ fixed at 0.4 $Z (\times 10^6 \text{ kg m}^{-2} \text{ s}^{-1})$	Fig. 1b; Z fixed at $3.3 \times 10^6 \text{ kg m}^{-2} \text{ s}^{-1}$ σ (dimensionless)
i	3.0	0.1
ii	3.5	0.2
iii	4.0	0.3
iv	4.5	0.4
v	5.0	0.5 (water; theoretical maximum)

$Z^{\text{ice}} = 3.50 \times 10^6 \text{ kg m}^{-2} \text{ s}^{-1}$ (Peters et al., 2008) and a Poisson’s ratio of $\sigma^{\text{ice}} = 0.33$ (Anandakrishnan, 2003). Reference curves for ice-rock and ice-water interfaces are also included as end-member contrasts in glaciological settings.

Where the substrate acoustic impedance exceeds that of ice (Fig. 1a, models ii–v), the zero-incidence reflection coefficient is positive and, for these models, switches to negative (i.e. a polarity reversal) between $40\text{--}55^\circ$ incidence. These polarity reversals can be highly diagnostic of material properties (Anandakrishnan, 2003). In Fig.1b, the acoustic impedance of the substrate is fixed, hence all models express equal $R(0)$, but AVA gradients (i.e. whether $R(\theta)$ increases or decreases) are strongly negative in model i , and strongly positive in model v (at least for $\theta < 55^\circ$). Contrasts in Poisson’s ratio therefore exert the strongest influence on AVA gradient,

with a positive AVA gradient associated with an increase in σ across the interface. In the glaciological context, strongly positive AVA gradients imply the presence of water in the substrate, either as a pore-fluid or as a free body (i.e. a subglacial lake).

The characteristics of numerous AVA responses can be summarised on an “AVA cross-plot” (Simm et al., 2000) (Fig. 1c for previous model curves). Shuey (1985) linearises the Knott-Zoeppritz equations, simplifying the angular variation in reflectivity as

$$R(\theta) = A + B \sin^2(\theta), \tag{3}$$

where A and B are functions of velocity and density contrasts, estimated by linear regression of the AVA curve where $\sin^2(\theta)$ is plotted against $R(\theta)$. An AVA cross-plot is therefore a representation of the best-fit Shuey A - and B -terms (e.g. Fig. 1c). Under certain circumstances, A and B can be used to derive quantitative information about subsurface physical properties, but Shuey’s linearisation is only strictly valid for cases of negligible refraction across an interface (i.e. for θ up to $\sim 30^\circ$, and for small velocity contrasts). Velocity contrasts across the bed of a glacier, including those applied in our models, typically violate the latter condition, hence A and B cannot be used quantitatively. Nonetheless, the cross-plot remains an efficient means of highlighting qualitative characteristics of AVA curves and we use it as such throughout this paper.

In Fig. 1c, A and B are derived and cross-plotted for each curve of Fig. 1a and b (cross and circle symbols, respectively). Term A approximates $R(0)$, hence the effect of changing the Poisson’s ratio of the substrate is only expressed in B (expected, since all curves in Fig. 1b share a

common zero-incidence reflectivity). Variations in substrate acoustic impedance modify both A and B , although A shows the greatest change. Uncertainties in either A and B are negligibly small. The cross-plot representation of AVA curves will be revisited in the later sections of this paper.

3 Thin-layers in glaciological AVA analysis

The Knott-Zoeppritz equations are strictly defined for the interface between two otherwise infinite, homogeneous, isotropic, half-spaces, and the presence of thin-layering between these half-spaces violates this condition (Bakke and Ursin, 1998; Aki and Richards, 2002; Nolan and Echelmeyer, 1999). In seismic terms, a layer is “thin” if it is thinner than one-quarter of the dominant wavelength, λ , of the seismic wavelet (Widess, 1973). At this threshold, termed the “tuning thickness” (Widess, 1973), reflections from the layer’s bounding interfaces superpose and a single interface is perceived. For thinner layers, with thickness around $\lambda/8$, the composite response approximates the derivative of the original signal and further thinning also reduces its amplitude (Bakke and Ursin, 1998). For such ultra-thin layers, the composite response may also be influenced by intrabed multiples and mode conversions (i.e. respectively, wavelets that reverberate within the thin layer, and those that convert between P- and S-wave modes). Thin bed effects introduce significant potential for misinterpretation, and Swan (1991) cautions that their impact can be stronger than the underlying lithological AVA effect.

How common are “thin-layers” in glaciological seismic settings? With a typical seismic wavelength of ~ 10 m (Smith, 2007; Anandakrishnan, 2003; Horgan et al., 2008), vertical stratifications spaced more closely than some 2–3 m would be considered seismically thin. Although glaciers themselves are clearly good approximations to half-spaces, subglacial tills frequently contain metre- (or sub-metre-) scale contrasts (Smith, 2007), such as the transitional boundaries between dilatant and lodged till (e.g. Clarke et al., 1984; Echelmeyer and Wang, 1987; Iverson et al., 1988, 1994; Truffer et al., 2001; Boulton et al., 2001; Porter and Murray, 2001; Evans et al., 2006; Iverson, 2011; Reinardy et al., 2011). It would therefore be prudent to consider how thin layering affects a seismic AVA response whenever surveys are conducted over till substrates.

Numerous strategies, developed principally in the hydrocarbon sector but also in glaciology, are available for thin-layer AVA interpretations, although certain simplifications and/or assumptions invalidate them in glaciological settings. Lin and Phair (1993) quantify the properties of a thin layer located in an otherwise homogeneous half-space, assuming that its upper and lower interfaces therefore have equal magnitude reflection coefficients. This is clearly unsuitable where a thin dilatant till layer may be located between ice and lodged till, with markedly different acoustic con-

trasts at either interface. Richards (1988) and Nolan and Echelmeyer (1999) derive generalised analytic expressions for thin-layer AVA responses by summing infinite series of intrabed multiples, but this approach neglects wavelet attenuation (effectively imposing an infinite quality factor). More realistically, a finite quality factor would more-rapidly attenuate intrabed multiples; furthermore, the longer a wavelet spends within an attenuating thin-layer, the greater the distortion of its waveform, hence the interference pattern between primaries and intrabed multiples varies with attenuation.

Here, we decompose the composite AVA response to a thin layer geometry using three approaches:

- travel-time analysis of the reflected wavelets that contribute to the composite response,
- assessment of the effective reflectivity of those reflections using the Knott-Zoeppritz equations, and
- forward modelling of seismic data for thin-layer geometries, and derivation of the corresponding AVA response.

3.1 Ray-tracing of reflected travel-times

Using Mathworks *Matlab*[®], we ray-traced travel-times for an isotropic, homogeneous glacier, overlying a horizontal, isotropic layer of dilatant till and a lodged till half-space (Table 2). An ice thickness of 1 km thick was modelled, although the AVA response is independent of ice thickness provided that the relative range of offsets is maintained. The acoustic impedance of the dilatant till, Z^{dil} , is $3.42 \text{ kg m}^{-2} \text{ s}^{-1}$ (Atre and Bentley, 1993; Vaughan et al., 2003) and its Poisson’s ratio, σ^{dil} , is 0.494, typical for water-saturated sediment (Gercek, 2007). Lodged till acoustic impedance, Z^{lod} , is $3.90 \text{ kg m}^{-2} \text{ s}^{-1}$ (Atre and Bentley, 1993; Vaughan et al., 2003) and its Poisson’s ratio, σ^{lod} , is 0.32, representative of average values for granular silty soil (Gercek, 2007). In Sect. 3.3, our synthetic wavelet has a dominant frequency of 150 Hz (consistent with that observed in later analysis of field data) and a nominal wavelength in the dilatant till of 12 m (with $v_P = 1800 \text{ m s}^{-1}$). We therefore vary the thickness of the dilatant till layer, h_d , from 0.1 to 5.0 m ($\lambda/120 \leq h_d \leq \lambda/2.4$).

Travel-times for nine reflected ray paths (Fig. 2) were calculated for a common midpoint (CMP) configuration of sources and receivers, offset from 0 to 5000 m (θ varies between 0–68°). Critical refractions are not considered at any interface since incidence angles are sub-critical for each wavelet mode. The nomenclature of each ray path describes the mode (i.e. P- or S-wave) of the wavelet as it crosses an interface, while upper- and lower-case letters respectively denote whether the section of the travel-path is a primary or intrabed multiple. We only consider ray paths that arrive at the surface as P-waves, since S-waves travel more slowly through ice ($v_P \approx 2v_S$) and do not interfere with the primary base-ice reflection, PP (Fig. 2a), nor the reflection from the

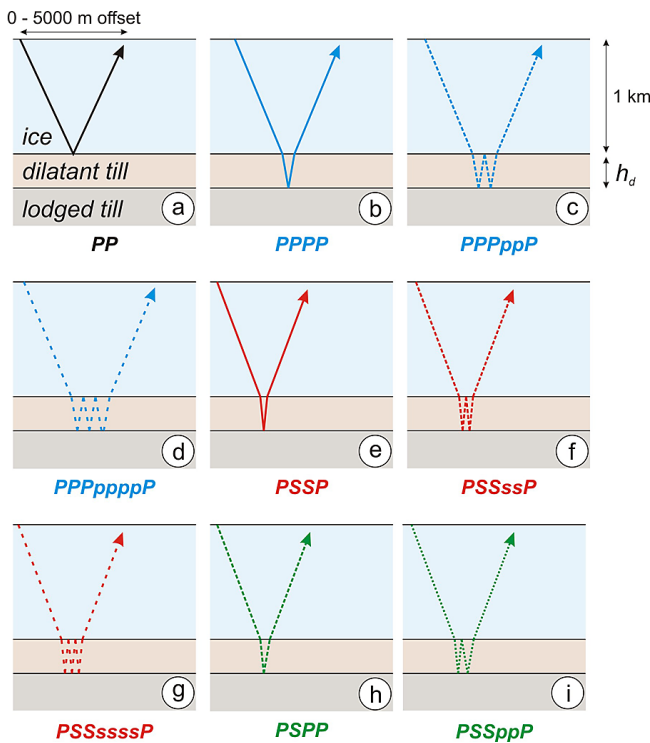


Fig. 2. Nomenclature and schematic representation of ray paths considered in modelling. Line colours and styles are equivalent to those in successive figures. Ray path (a) is the basal ice reflection (black), (b–d) comprise P-wave propagation along the whole travel-path (blue), (e–g) have S-wave mode conversions within the dilatant till (red), and (h) and (i) convert between S- and P-wave modes within the dilatant till (green).

base of the thin-layer, PPPP (Fig. 2b). Intrabed P-wave multiples within the thin-layer (Fig. 2c, d) are denoted PPPppP and PPPppppP. PSSP (Fig. 2e) undergoes mode conversions as it enters and exits the thin-layer, and PSSssP and PSSssssP (Fig. 2f, g) are its intrabed multiples. Finally, PSPP (Fig. 2h) converts between S- and P-wave modes in the thin-layer, and PSSppP (Fig. 2i) is a mode-converting intrabed multiple.

Example travel-times for $h_d = \lambda / 4 = 3.0$ m are derived, and plotted (Fig. 3a) for clarity as a lag behind the arrival time of PP. The strong velocity reduction across the ice-till boundary implies that wavelets are strongly refracted towards the vertical (at PP’s maximum incidence of 68° , PPPP and PSSP are refracted to 27.8° and 3.0° , respectively), hence the lag between PP any other event is almost constant with incidence angle. The first 3.4 ms lag behind PP is shaded grey in Fig. 3a, and corresponds to the normal-incidence travel-time of a P-wave through the thin-layer. Given that $\lambda / 4$ is the limit of resolution, no events arrive within this lag, hence we would conclude that the basal reflection can be resolved from successive events. However, Widess (1973) states that although resolution criteria are fulfilled at the $\lambda / 4$ threshold, this pertains specifically to the first-break of a wavelet and

factors including waveform and wavelet duration can still cause interference for successive wavelet half-cycles. In later analysis, our synthetic pulse has several half-cycles and amplitude picks are located within the second of these following the first-break. We therefore expect to observe interference effects beyond $h_d = \lambda / 4$, until all events lag the second half-cycle of PP by more than 3.4 ms.

3.2 Effective reflectivity

Deriving the individual AVA responses of these reflections allows their specific contributions to be identified within the composite response. We use the Knott-Zoeppritz equations to obtain the “effective” reflectivity, R_{eff} , of the nine events in Fig. 2 (Fig. 3b). Effective reflectivity differs from the reflectivity defined in Sect. 2 since it includes all reflection and transmission losses accrued by a wavelet along its propagation path. For the shallowest interface in a model there are no overlying interfaces; hence, a wavelet expresses R_{eff} identical to the reflectivity defined in Eq. (1). However, a primary reflection from the n th interface expresses

$$R_{\text{eff}_n} = R_n \prod_{i=1}^{n-1} T_i^2 \quad (4)$$

where $T_i (= 1 - R_i)$ is the transmission coefficient across an interface (squared since a wavelet crosses each interface twice as it propagates down from and up to the surface). If no correction for these losses is applied, effective reflectivity is the quantity derived from amplitude analysis of a seismic reflection. For this analysis, it is the effective reflectivity of an interface that governs how much each arrival contributes to the composite wavelet. In Fig. 3b, R_{eff} for each arrival is plotted against the incidence angle of PP at the glacier bed, as would be performed if only a single reflection could be perceived.

The base ice reflection, PP, shows AVA characteristics expected from a transition from low-to-high σ and high-to-low Z , specifically negative $R(0) (= -0.011)$, positive AVA gradient (here, for $\theta < 50^\circ$) and a polarity reversal (here, at $\theta \approx 10^\circ$). The P-wave reflection from the base of the thin-layer, PPPP, has the opposite character (positive $R(0) = +0.066$ and negative AVA gradient), although P-wave reflectivity within the dilatant till is low and its intrabed multiples are negligible. The equivalent reflectivity for S-waves is much higher: PSSP is very strong at 60° incidence (some 4-times stronger than the maximum magnitude of PP) and its multiple wavetrain remains significant even after two intrabed reverberations. However, both P- and S-wave intrabed multiples show successive polarity reversals causing them to interfere destructively in the composite wavelet. This is especially relevant for the S-wave, and their contribution to the composite is less than the large-magnitude reflectivity would suggest.

Together, travel-time and reflectivity models suggest that the strongest contributions to the composite AVA response will be PP and PPPP, with weaker contributions from PSPP

Table 2. Ice and till properties as used in “SKB2” forward-modelling of seismic data (with reference to Vaughan et al., 2003; Peters et al., 2008). Ice properties are fixed throughout, and S-wave quality factors are equated to reference values for P-waves. Nine thicknesses of dilatant till are simulated, from 0.1 m ($\lambda/120$) to 5.0 m ($\lambda/2.4$).

Quantity	Ice	Dilatant Till	Lodged Till
thickness (m) [as proportion of λ]	1000	0.1 [$\lambda/120$], 0.3 [$\lambda/40$] 0.5 [$\lambda/24$], 1.0 [$\lambda/12$] 1.5 [$\lambda/8$], 2.0 [$\lambda/6$] 2.5 [$\lambda/4.8$], 3.0 [$\lambda/4$] 5.0 [$\lambda/2.4$]	half-space
v_P ($m\ s^{-1}$)	3800	1800	1950
v_S ($m\ s^{-1}$)	1900	200	1000
density ($kg\ m^{-3}$)	920	1900	2000
acoustic impedance ($\times 10^6\ kg\ m^{-2}\ s^{-1}$)	3.50	3.42	3.90
Poisson’s ratio	0.33	0.49	0.32
quality factor (Q_P, Q_S)	430	256	256

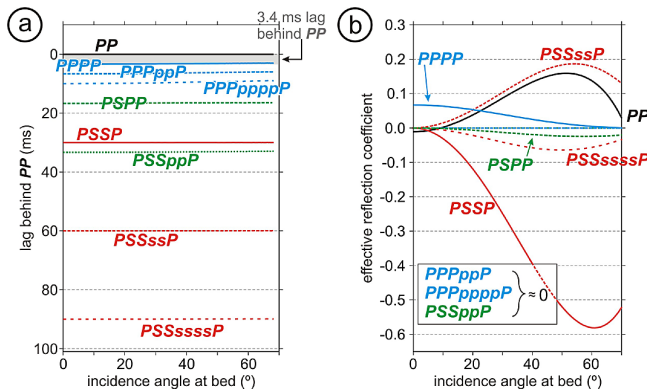


Fig. 3. Travel-time and effective reflectivity for model ray paths, as introduced in Fig. 2. (a) Ray-traced travel-times expressed, for clarity, as a lag behind PP. (b) Effective reflectivity of reflections in (a). Ray paths that feature intrabed P-wave multiples have negligible reflectivity.

and PSSP. Intrabed multiples of the latter may be significant but, given their slower propagation velocity through the thin-layer, they only interfere with the basal reflection in the thinnest h_d cases where their lag behind PP is sufficiently small.

3.3 Forward modelling of seismic data

The previous modelling approaches provide valuable insight into the character of composite AVA responses, but neglect wavelet attenuation. We therefore forward-modelled seismic data for the models in Table 2, using the software “SKB2” (Laboratoire de Géophysique Interne et Tectonophysique, University of Grenoble; Kennett and Kerry, 1979; Bouchon, 1981; Kennett, 1983; Mallick and Frazer, 1987),

which delivers the three-component (i.e. vertical, radial and transverse) seismic response to a one-dimensional reflectivity model (homogenous, isotropic, horizontal layering) for any prescribed range of CMP offsets. Here, we consider only the vertical component of the seismic wavelet since the geophones in our field acquisition (Sect. 5) are also vertical-component only. We model a source pulse with 150 Hz frequency, and CMP offsets from 0 to 5000 m.

The P-wave quality factor ($Q_P \approx 430$) is measured from real seismic data (Sect. 5). The S-wave quality factor, Q_S , is equated to Q_P (e.g. Abercrombie and Rice, 2005) in the absence of available englacial S-wave attenuation measurements. Since there appear to be no reported examples of quality factors for in situ subglacial till, we allocate a representative value of $Q_P = Q_S = 256$ (Sain et al., 2009) obtained for unconsolidated sea-floor mud. This analogue is deemed appropriate since the pore-pressure regime in sea-floor sediment is probably more representative of that beneath an ice sheet than a measurement made on a surface till exposure. Although lower quality factors have been recorded for sea-floor sediment (e.g. Best et al., 1994; Ayres and Theilen, 2001; Riedel and Theilen, 2001; Sain and Singh, 2011), we allocate the highest values to minimise the Q -contrast (and hence its reflectivity contribution) across the glacier bed.

Selected forward-modelled seismic responses are shown in Fig. 4, together with a control response corresponding to ice overlying a dilatant till half-space. Trace amplitudes are scaled for geometric spreading and attenuation losses (corrections defined for the dominant frequency of 150 Hz), assuming propagation in ice only. Travel-times correspond to the lag behind the first-break of PP, following the application of non-stretch normal-moveout (NMO) corrections (Perroud and Tygel, 2004) using $v_P = 3800\ m\ s^{-1}$ as measured from field data in Sect. 5. Although we cannot explain the residual moveout that is present in each gather, we consider it negligible since it is less than 0.6% of the reflection moveout originally displayed ($\sim 3\ ms$ vs. $\sim 500\ ms$). Included in each panel is the corresponding ray-traced travel-time model from Sect. 3.1. Since our amplitude picks (grey triangles; see next section) are located at the absolute maximum of the second wavelet half-cycle, travel-time models are referenced to the amplitude pick in zero-incidence traces.

The characteristics of PP are well-represented in the control response, which has a polarity reversal close to 10° and increasing reflectivity up to 50° incidence. In the thinnest case ($h_d = \lambda/120$), the most significant contributions to the composite follow within 2 ms of PP and a single reflection, featuring no polarity reversal, is perceived. The $\lambda/24$ case also shows a single reflection, but the interference pattern is different compared to the previous example. At $\lambda/12$, there is sufficient lag between PP and the S-wave modes that the strong PSSP phase can be resolved, yet the basal reflection still appears as a single event. At $\lambda/4$, the theoretical limit of resolution, characteristics of PP can be distinguished,

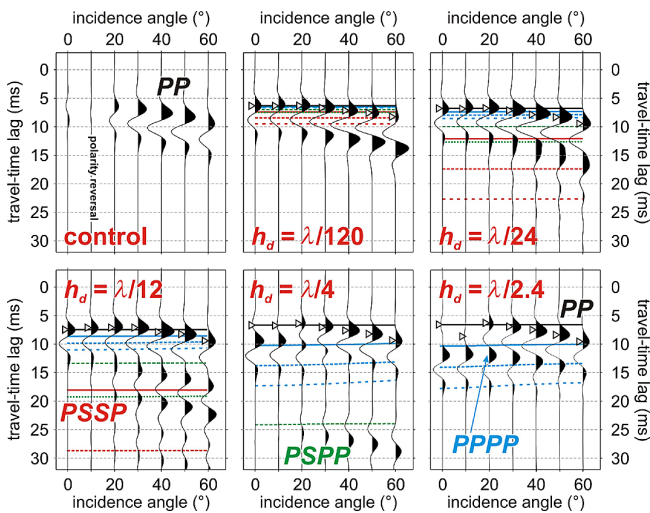


Fig. 4. Synthetic seismic responses to thin layers of h_d varying from $\lambda/120$ and beyond $\lambda/4$. Traces are non-stretch NMO corrected, and amplitudes are corrected for attenuation losses and geometric spreading. Coloured lines are the ray-traced travel-times, with the equivalent colour and line-style conventions as in Fig. 3. The control response shows the reflection from ice overlying a dilatant till half-space. Grey triangles show the location of amplitude picks used to generate AVA curves in Fig. 5.

although there is still interference with PPPP. A weak event arrives later than these events: this could be PSPP, implying that the remaining interference is exclusively between P-wave modes. Finally, as $\lambda/4$ is exceeded, PP and PPPP are sufficiently separated that interference is only apparent close to the low-amplitude polarity reversal, and the amplitude variation of PP is similar to the control response.

3.4 Composite AVA curves

Composite AVA curves derived from all modelled data are shown in Fig. 5 a and b showing h_d less and greater than $\lambda/8$, respectively). For reference, the effective reflectivities of PP and PPPP are also shown. However, since model curves only consider the vertical component of the synthetic wavelet, the equivalent component of the effective reflectivities of PP and PPPP is obtained by applying a $\cos(\theta)$ obliquity factor (e.g. Yilmaz, 2001). As stated in Sect. 3.1, amplitudes of synthetic wavelets are picked at the absolute maximum of the second wavelet half-cycle. The first-half cycle has very-low amplitude and is barely perceptible even in our noise-free synthetics, hence would most-likely be indistinct given noise conditions in real data. The composite $R(0)$ was obtained by comparing each zero-incidence amplitude to its equivalent in the control model, in which $R(0)$ is explicitly known (i.e. from substituting acoustic impedances for ice, Z^{ice} , and dilatant till, Z^{dil} , into Eq. 1). Since wavelet amplitude scales linearly with reflection coefficient, the ratio of amplitudes is equivalent to the ratio of reflection coefficients.

For $h_d < \lambda/8$, the observed AVA responses appear to be hybrids of PP and PPPP curves, with the positive AVA gradient of the former (for $\theta < 40^\circ$) but the positive $R(0)$ of the latter. For h_d between $\lambda/8$ and $\lambda/6$, AVA curves are more complicated and feature an abrupt switch in gradient near 20° incidence. In Fig. 3b, this is close to the angle where the effective reflectivity of PP first exceeds that of PPPP, hence we suggest that the character of the composite is influenced by the characteristics of PPPP at small incidence angles and by those of PP at $\theta > 20^\circ$. Furthermore, Fig. 4 implied that the high reflectivity PSSP phase would not contribute to the composite at $h_d > \lambda/8$, hence the apparently complex AVA response actually results from a simpler interference pattern between fewer reflections and mode conversions. As h_d approaches $\lambda/4$, the characteristics of PP emerge although, as suggested in Sect. 3.1, some interference is still observed: the zero-incidence reflectivity is shifted to more-negative values with respect to the model curve. Finally, for $h_d > \lambda/4$ ($= 5.0$ m), the characteristics of PP are resolved.

Composite curves are added to the AVA cross-plot (Fig. 5c, which also includes example models from Fig. 1c). As before, best-fit Shuey terms are derived for incidence angles between 0 – 30° . The cross-plot reaffirms the observation that AVA curves derived from models of $h_d \leq \lambda/8$ are hybrids of PP and PPPP, since their best-fit terms occupy a region of the cross-plot between the two model curves. Since the two events become distinct for the thickest h_d models, A and B tend towards those of PP. The intermediate-thickness h_d models ($\lambda/8 < h_d < \lambda/4$) have B -terms close to zero that are associated with greater uncertainties (uncertainties for all other regressions, and in the A -terms throughout, are negligibly small). Recall that the B -term is associated with the AVA gradient, hence the increased uncertainty here relates to the gradient switch in the associated AVA curves.

4 Glaciological interpretation of thin-layer AVA responses

Having shown the AVA variability caused by a change in h_d , we now consider its significance for a glaciological interpretation. The key interpretative issue is if a thin-layer AVA curve resembles a plausible AVA response to a single interface, it could be misdiagnosed as such. Whilst this is unlikely for the intermediate-thickness models (i.e. $\lambda/8 < h_d \leq \lambda/6$), as their abrupt gradient switch is implausible as a single-interface AVA curve, the other curves are vulnerable to misinterpretation and the incorrect acoustic impedance and/or Poisson's ratio could be allocated to the subsurface.

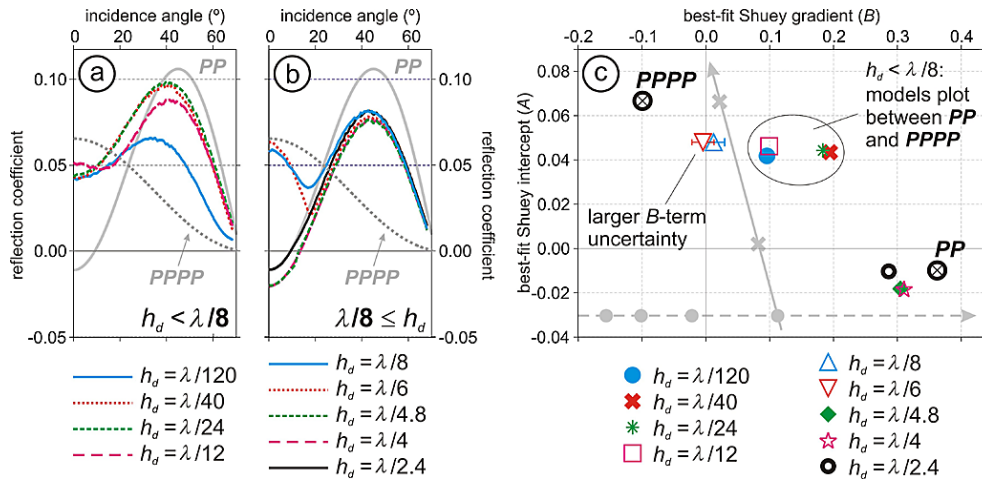


Fig. 5. AVA curves derived from forward-modelled seismic data. (a) Responses for $h_d < \lambda/8$. (b) Responses for $\lambda/8 \leq h_d$. Grey curves show effective reflectivities for PP and PPPP, with an obliquity factor applied, for reference. (c) AVA cross-plot for reflectivities in (a) and (b). For reference, the example models from Fig. 1c are also plotted (light grey).

4.1 Conventional interpretation of AVA responses

If it was assumed that the composite AVA curves actually are responses to single-interface geometries, Table 3 shows the apparent acoustic impedance, Z_{app} , and apparent Poisson's ratio, σ_{app} , that they define (also comparing them to model dilatant and lodged till values). To estimate Z_{app} , we rearrange Eq. (1) for Z_j and substitute the observed zero-incidence reflectivity, $R_{\text{obs}}(0)$, and the acoustic impedance allocated for ice ($Z^{\text{ice}} = 3.5 \text{ kg m}^{-2} \text{ s}^{-1}$). For σ_{app} , we define the best-fit AVA curve to the observed response, and record the Poisson's ratio that this defines. Curve fitting was performed by simulating many manifestations of AVA curves, for $\theta < 30^\circ$, with many trial values of density, v_p and v_s substituted into the Knott-Zoeppritz; the best-fit curve is defined by the parameter set that minimises the root-mean-square (RMS) error between the trial and observed AVA curve.

Tabulated Z_{app} and σ_{app} values suggest that it is only as h_d approaches its resolvable that the AVA analysis uniquely identified either till type, specifically the dilatant till. For the thinnest geometries, Z_{app} is indicative of lodged till, whereas σ_{app} may be more suggestive of dilatant till throughout. Although these parameters could be considered to deliver the bulk properties of the substrate, they are incompatible when allocated to a single till type: a subglacial till with a high acoustic impedance would not be expected to also have a high Poisson's ratio, since these quantities point towards opposing water saturation (e.g. Smith, 2007; Vaughan et al., 2003).

The observation of such “paradoxical” quantities could therefore indicate the presence of thin-layers in the substrate. We therefore suggest an interpretative strategy to extract more information about subglacial thin-layering from a composite AVA response.

4.2 Thin-layer interpretation for AVA responses

In Fig. 5c, the best-fit terms for all models with $h_d \leq \lambda/6$ plot between those of PP and PPPP. Likewise, despite changes in the AVA gradient, the observed zero-incidence reflectivity in Fig. 5a is always between those of PP and PPPP. The AVA curves for h_d of $\lambda/120$, $\lambda/40$ and $\lambda/24$ each express $R_{\text{obs}}(0)$ of 0.043, whereas that for $h_d = \lambda/12$ expresses $R_{\text{obs}}(0) = 0.052$. These are close to the sum of the effective zero-incidence reflectivity at the upper and lower interfaces of the thin-layer (-0.011 and $+0.066$, respectively, with a sum of $+0.055$). With this observation, we use Eqs. 1 and 4 to formulate a method for interpreting thin-layer characteristics from the composite AVA curve.

Since $R_{\text{obs}}(0)$ approximates the summed effective reflectivity of the two interfaces, it follows that:

$$R_{\text{obs}}(0) \approx R_{\text{eff}_1}(0) + R_{\text{eff}_2}(0), \quad (5)$$

and, by substituting Eq. (4),

$$R_{\text{obs}}(0) \approx R_1(0) + [1 - R_1(0)]^2 R_2(0), \quad (6)$$

assuming that the upper and lower interfaces of the thin-layer are the first two horizons that are encountered by the seismic wavelet.

We next assume that the acoustic impedances of ice, Z^{ice} , and dilatant till, Z^{dil} , can either be measured or assumed, and rearrange Eq. (6) to estimate the acoustic impedance of the lodged till, Z^{lod} . Substituting these into Eq. (1), we fix $R_1(0)$ and express $R_2(0)$ in terms of Z^{lod} and Z^{dil} , such that

$$R_{\text{obs}}(0) \approx R_1(0) + [1 - R_1(0)]^2 \frac{z^{\text{lod}} - z^{\text{dil}}}{z^{\text{lod}} + z^{\text{dil}}}. \quad (7)$$

Table 3. Apparent acoustic impedance, Z_{app} , and Poisson's ratio, σ_{app} , as measured from responses in Fig. 5 if thin-layer considerations were ignored in AVA interpretation. dZ and $d\sigma$ show the mismatch between observed and model properties for the dilatant and lodged till units. Modelled acoustic impedances of dilatant and lodged till are 3.42 and $3.90 \times 10^6 \text{ kg m}^{-2} \text{ s}^{-1}$, respectively; equivalent Poisson's ratios are 0.49 and 0.32 .

h_d	Z_{app} $\times 10^6 \text{ kg m}^{-2} \text{ s}^{-1}$	dZ (%) (dilatant)	dZ (%) (lodged)	σ_{app}	$d\sigma$ (%) (dilatant)	$d\sigma$ (%) (lodged)
$\lambda/120$	3.81	+11.4	-2.31	0.43	-12.2	+46.9
$\lambda/40$	3.81	+11.4	-2.31	0.47	-4.1	+46.9
$\lambda/24$	3.82	+11.7	-2.05	0.47	-4.1	+46.9
$\lambda/12$	3.88	+13.5	-0.52	0.43	-12.2	+34.4
$\lambda/8$	3.93	+15.0	+0.76	0.39	-20.4	+21.9
$\lambda/6$	3.97	+16.1	+1.79	0.36	-26.5	+12.5
$\lambda/4.8$	3.36	-1.75	-13.8	0.48	-2.0	50.0
$\lambda/4$	3.36	-1.75	-13.8	0.48	-2.0	+50.0
$\lambda/2.4$	3.41	-0.29	-12.6	0.48	-2.0	+50.0

Rearranging for Z^{lod} therefore gives

$$Z^{\text{lod}} \approx \frac{z^{\text{dil}}[(R_{\text{obs}}(0) - R_1(0)) + [1 - R_1(0)]^2]}{[1 - R_1(0)]^2 - (R_{\text{obs}}(0) - R_1(0))} \quad (8)$$

(note: the rearrangement of these equations is trivial if Z^{dil} is alternatively required).

For our models, $R_1(0) = -0.011$, $Z^{\text{ice}} = 3.5 \times 10^6 \text{ kg m}^{-2} \text{ s}^{-1}$ and $Z^{\text{dil}} = 3.42 \times 10^6 \text{ kg m}^{-2} \text{ s}^{-1}$. With the zero-incidence reflectivities observed in Fig. 5a, Eq. (8) predicts Z^{lod} of $3.81 \times 10^6 \text{ kg m}^{-2} \text{ s}^{-1}$ ($h_d = \lambda/120$, $\lambda/40$ and $\lambda/24$) and $3.88 \times 10^6 \text{ kg m}^{-2} \text{ s}^{-1}$ ($h_d = \lambda/12$). Models were simulated using $Z^{\text{lod}} = 3.90 \times 10^6 \text{ kg m}^{-2} \text{ s}^{-1}$, hence these estimates are within -2.3% of the model quantity. The composite AVA response can therefore be interpreted in terms of two acoustic impedances and h_d , which must have a maximum value of $\lambda/8$. It is difficult to resolve the Poisson's ratio for the lodged till, although the Poisson's ratio of the dilatant till can be assumed to be at least that expressed by the AVA curve.

For the responses to the thicker layers, where $h_d = \lambda/8$ and $h_d = \lambda/6$, the observed zero-incidence reflectivity is $+0.058$ and $+0.063$, respectively. These imply Z^{lod} is 3.93 and $3.97 \times 10^6 \text{ kg m}^{-2} \text{ s}^{-1}$, with respective errors of $+0.5\%$ and $+1.5\%$. Table 3 suggests that the Poisson's ratio expressed by these AVA responses is neither representative of dilatant nor lodged till, and it may therefore be difficult to constrain a representative value in this case. However, the observation of a gradient switch in an AVA response may indicate that the thickness of the thin-layer is between $\sim \lambda/8$ and $\sim \lambda/6$.

For the cases of h_d approaching $\lambda/4$, Table 3 suggests that both the acoustic impedance and Poisson's ratio of the dilatant till can be accurately estimated despite the remaining interference between PP and PPPP. However, this suggests that the AVA analysis is insensitive to the properties of the underlying lodged till, and it is therefore unlikely that the composite AVA curve would be recognised as the response to a thin-layer geometry. This represents a significant inter-

pretative risk, since dilatant till properties may be allocated to the whole substrate instead of the vertical thickness of the thin-layer. A careful interpretation of the actual seismic traces would be recommended, to check for events following immediately behind the basal reflection that could be identified as PPPP.

5 Application to real data

We now consider thin-layer effects in the interpretation of actual seismic AVA data, acquired on the Russell Glacier outlet of the West Greenland ice sheet ($\sim 70 \text{ km}$ inland of its western margin) during summer 2010. At the position of the AVA analysis, the ice is $1.08 \pm 0.01 \text{ km}$ thick ($v_p = 3800 \pm 40 \text{ m s}^{-1}$, from prestack migration velocity analysis, Sheriff and Geldart, 1999; Bradford et al., 2009) and the bed reflection is planar over $\sim 750 \text{ m}$ with an in-line dip less than 3° . An orthogonal seismic profile suggested there were no potential sources of out-of-plane-reflectivity in this area. The ice surface was non-uniform over the 4 km -long profile, varying from dry and solid in places to wet and channelised, and friable in others. Consequently, the interference between the primary arrival and its free-surface source ghost are unpredictable from shot-to-shot, hence ghosting represents a source of random error in this analysis. The topographic variation along the line was less than 40 m , and never more than 3 m between successive shot locations, 80 m apart. Sources were 250 g Pentex charges, installed at $\sim 3 \text{ m}$ depth, and data were recorded with a Geometrics *GEODE* system at 48 concrete-mounted, 100 Hz , vertical-component geophones installed at 10 m intervals.

5.1 Data pre-processing

Figure. 6a shows a series of traces from a CMP supergather (a combination of successive CMP records). For the measured velocity and ice thickness, the 550 m offset range of this record corresponds to an incidence range of $4\text{--}18^\circ$ at the glacier bed. For these angles, and elsewhere in the record (up to a maximum angle of $\sim 23^\circ$), the basal reflection shows no polarity reversal, either with respect to the direct wave or within the offset range of a gather. In conventional AVA analysis, the absence of a polarity reversal would immediately exclude a dilatant till substrate.

Minimal data processing was imposed to avoid the potential introduction of amplitude artefacts. We applied a static correction (25 ms) to remove the detonator delay from our traces, a bandpass filter to suppress noise outside of the useful signal bandwidth (centred on 150 Hz), and muting to suppress residual groundroll. Trace amplitudes were corrected for geometric spreading and attenuation losses. To correct for the latter, we obtained Q_p by considering the spectral ratio (Dasgupta and Clark, 1998) between primary reflections and their first multiple. Compared to other derivations,

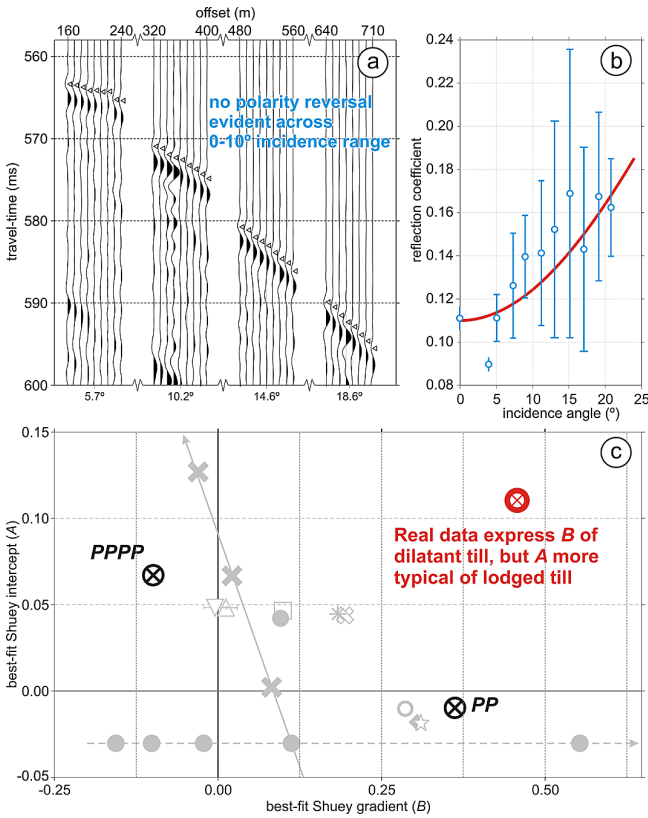


Fig. 6. AVA analysis of real data, from Russell Glacier, Greenland. **(a)** Representative seismic supergather, in which the basal reflection exhibits no polarity reversal. Grey triangles show location of amplitude picks. **(b)** AVA response of the basal reflection. Blue points are the observed AVA data, red curve is the best-fit curve following Bayesian statistical analysis. **(c)** AVA cross-plot. Best-fit Shuey quantities to real data (red) show positive *A*- and *B*-terms. Black points show reference *A*- and *B*-terms for PP and PPPP models, and model responses from Figs. 1c and 5c are shown (grey) for comparison.

involving spectral ratios of direct (Gusmeroli et al., 2010) and/or reflected waves (Peters et al., 2012), our approach delivers a depth-averaged quality factor for the whole ice column using wavelets that have sampled virtually the same volume of ice. The multiple arrivals we consider reflect twice from the glacier bed and once from the underside of its surface. This implies that our analysis is more vulnerable to effects of frequency-dependent reflectivity than that of Peters et al. (2012), who consider a primary and a direct arrival, but we consider than the benefit of deriving Q_P from wavelets that share a common propagation path to outweigh any such detrimental impacts. The quality factor we measure at this location was $Q_P = 436 \pm 140$.

Primary and multiple amplitudes were also compared to estimate the zero-offset reflection coefficient of the glacier bed (e.g. Roethlisberger, 1972; King et al., 2003), using primary-multiple pairs within a 0–10° incidence range. Be-

yond this range there is too great a contrast in the AVA response of a primary and its corresponding multiple to make this analysis reliable. The median of the $R_{\text{obs}}(0)$ values is +0.110, and observations at successive angles are normalised to this.

5.2 AVA analysis

Figure 6b shows the AVA response we derive at the glacier bed. The reflection points that contribute to this response span a 300 m-wide section of the bed, hence reflectivity is spatially-averaged. However, our wavelet has a Fresnel zone (Lindsey, 1989) of 165 m, hence this distance is comparable to the intrinsic spatial resolution in our data. The signal-to-noise ratio of response is enhanced by averaging bed reflectivity in 2° incidence angle bins. Uncertainty bars are centred on the median value within each bin, and span the interquartile range (Booth et al., 2011) in both the reflectivity and incidence angle directions. A key source of uncertainty is shot-to-shot variability in the coupling of sources and geophones, which was minimised by normalising each trace by the root-mean-square direct wave amplitude in common shot and common receiver gathers. However, given the additional imprecision of v_P , Q_P and ice thickness, we accept a wide range of potential error in this analysis.

A Bayesian statistical analysis was applied to derive the best-fit AVA curve (solid line, Fig. 6c) to the observed AVA data, honouring its uncertainties, and to establish the uncertainty in derivative parameters. Given a set of observations and their associated uncertainties, the Bayesian analysis assesses the probability that a given set of model parameters are explained by those observations. In our case, the observed data is $\overline{R}_{\text{obs}}$, denoting the mean reflectivity in any angle bin, model parameters, M , are the densities and seismic velocities to be substituted into the Knott-Zoeppritz equations, and the probability is denoted as $P(M | \overline{R}_{\text{obs}})$. If the uncertainty within a given angle bin, θ_i , has a Gaussian distribution, the probability, $P(\overline{R}_{\text{obs}} | M)$, that a set of observations is explained by the model is

$$P(\overline{R}_{\text{obs}} | M) = \prod_i \frac{1}{\psi_i \sqrt{2\pi}} \exp\left(-\frac{(\overline{R}_{\text{obs}}(\theta_i) - g(\theta_i, M))^2}{2\psi_i^2}\right) \quad (9)$$

where ψ_i is the standard deviation within each angle bin and $g(\theta_i, M)$ is the model value output by given θ_i and M values, with g here representing the system of Knott-Zoeppritz equations. $P(M | \overline{R}_{\text{obs}})$ and $P(\overline{R}_{\text{obs}} | M)$ are related through Bayes' rule that states

$$P(M | \overline{R}_{\text{obs}}) \propto P(\overline{R}_{\text{obs}} | M)P(M), \quad (10)$$

where $P(M)$ is the “prior” probability for the model parameters. Since we impose no preferred values on the model, we assume that $P(M)$ is constant and $P(M | \overline{R}_{\text{obs}}) = P(\overline{R}_{\text{obs}} | M)$.

The best-fit *M*-values are therefore those which maximise $P(M | \overline{R}_{\text{obs}})$ or $P(\overline{R}_{\text{obs}} | M)$. However, the distribution of

data in our angle bins has a double-Gaussian form. For the 12–14° angle bin, the RMS difference between the observed data and best-fit double-Gaussian distribution is 2.5×10^{-5} , rising to 1.9×10^{-3} for the best-fit single-Gaussian distribution (a hundred-fold increase in fitting error). To use a double-Gaussian distribution, Eq. (9) is modified to

$$P(\overline{R}_{\text{obs}} | M) = \prod_i \frac{1}{\psi_{i1} \sqrt{2\pi}} \exp\left(-\frac{(\overline{R}_{\text{obs}}(\theta_i) - g(\theta_i, M))^2}{\psi_{i1}^2}\right) \frac{1}{\psi_{i2} \sqrt{2\pi}} \exp\left(-\frac{(\overline{R}_{\text{obs}}(\theta_i) - g(\theta_i, M))^2}{\psi_{i2}^2}\right) \quad (11)$$

where the subscripts 1 and 2 in the $\overline{R}_{\text{obs}}(\theta_i)$ and ψ_i terms indicate the mean and standard deviation of the two components in the double-Gaussian distribution.

Aside from any earlier analysis so far conducted in this paper, we note at this point that the double-Gaussian distribution may be providing an independent indication of a thin-layer problem, and specifically a subglacial thin-layer that is laterally variable. If a proportion of our reflection points portray a thin-layer of a certain thickness, and that thickness changes beneath nearby reflection points, it is likely that the distribution of reflectivity will be bimodal within a given angle bin. Such statistical analyses may therefore be useful as an interpretative tool for thin-layer analysis, but we will revisit this in future research.

The best-fit AVA curve suggests that the substrate has an acoustic impedance of $4.36 \pm 0.18 \times 10^6 \text{ kg m}^{-2} \text{ s}^{-1}$ and Poisson's ratio close to 0.5 (the precision is difficult to establish since σ is insensitive to v_S at low S-wave velocity). The acoustic impedance is strongly indicative of a lodged till deposit with low porosity (e.g. Vaughan et al., 2003), yet Poisson's ratio suggests a highly water-saturated substrate. Accordingly, both *A*- and *B*-terms in the Shuey linearisation of this curve are also positive (cross-plotted in Fig. 6c). This contradictory set of observations may diagnose the presence of a thinly-stratified substrate.

5.3 Thin-layer analysis

We invoke a thin-layer argument in order to reinterpret the AVA response as a layered till geometry, using Eq. (8). We assume that there is negligible *Q*-contrast across the interface, and that the maximum thickness of the thin-layer is $\lambda/6$, given the observation of positive *A*- and *B*-terms in the Shuey linearisation.

With $Z^{\text{ice}} = 3.5 \times 10^6 \text{ kg m}^{-2} \text{ s}^{-1}$, the acoustic impedance suggested by the best-fit AVA curve suggests that $R_{\text{obs}}(0)$ at the base of the glacier is $+0.109 \pm 0.02$. With Z^{ice} fixed and a reference range of $Z^{\text{dil}} = 3.0 - 3.4 \times 10^6 \text{ kg m}^{-2} \text{ s}^{-1}$ (Atre and Bentley, 1993; Vaughan et al., 2003), the effective reflectivity at the upper interface of the thin-layer, R_1 , is between -0.077 and -0.015 . On substitution into Eq. (8), these quantities suggest that $Z^{\text{lod}} = 4.26 \pm 0.59 \times 10^6 \text{ kg m}^{-2} \text{ s}^{-1}$.

Assuming that maximum v_P through the thin-layer of dilatant till is 1800 m s^{-1} , the maximum wavelength of a 150 Hz wavelet is 12.0 m. Our $\lambda/6$ criterion therefore suggests that the thickness of the thin-layer does not exceed 2 m. For the lower velocity of 1600 m s^{-1} , as quoted in Peters et

al. (2008), the implied wavelength is 10.5 m and the maximum thickness of the thin-layer is 1.8 m.

We therefore conclude that our study site on Russell Glacier is underlain by a stratified till deposit, having dilatant till overlying a lodged till unit. The dilatant till has a maximum thickness of 2 m and a Poisson's ratio that approaches 0.5, indicating high water saturation and non-cohesive sediment (Gercek, 2007). The underlying lodged till has an acoustic impedance of $4.26 \pm 0.59 \times 10^6 \text{ kg m}^{-2} \text{ s}^{-1}$, suggesting both low porosity and water saturation. However, its acoustic impedance is unlikely to exceed $5 \times 10^6 \text{ kg m}^{-2} \text{ s}^{-1}$, hence the till is probably un lithified (Vaughan et al., 2003). Evidence from statistical analysis gives an initial indication that the thickness of the thin-layer may be laterally variable over a 300 m range.

6 Discussion and implications

By recognising and invoking a thin-layer AVA argument, we were able to interpret our data with a greater degree of complexity and consistency than with a conventional procedure. Although our approach is based on a qualitative similarity to previous model outputs, a meaningful numerical inversion would require measurement or assumption of additional properties, particularly Q_P and Q_S for subglacial till (and glacier ice in the latter case). We acknowledge that, throughout, we assume homogenous and isotropic layer properties, having measured both v_P and Q_P from depth-averaged observations. AVA analysis is complicated in anisotropic cases (e.g. Tsvankin, 2001), and numerous research papers have shown detectable englacial velocity and attenuation contrasts corresponding to changes in ice temperature (Kohnen, 1974; Peters and Anandakrishnan, 2010) and/or crystal orientation (Horgan et al., 2008; Gusmeroli et al., 2012). However, we consider that initial recognition of thin layer issues provides a significant improvement over a conventional interpretation approach. Alternative quantitative approaches to deriving the actual thickness of the thin layer include cepstral relationships, in which the periodicity within an amplitude spectrum can be used to interpret interference patterns (e.g. Hall, 2006; Rubino and Velis, 2009) but trials of these suggested that our data had an insufficient signal-to-noise ratio.

In some cases, thin-layer considerations may be irrelevant. For a glacier underlain by intact bedrock, thin-layer geometries may be neglected since the substrate is unlikely to have strong stratifications (although anisotropic AVA effects may be important if the bedrock is fractured; Xu and Tsvankin, 2001). Likewise, AVA studies of subglacial lakes (Peters et al., 2008) are likely to be free from thin-layer effects, provided that the free-water thickness is sufficient to avoid interference. Thin-layer effects should always be considered, however, where AVA analysis is conducted over a subglacial till, given the potential for these units to be thinly stratified. This is particularly relevant where the

interpretation is supplied to predictive models of glacier flow, given the sensitive relationship between the substrate of a glacier and its flow regime (Pattyn, 1996; Truffer et al., 2001; Pimentel et al., 2011; Sergienko and Hulbe, 2011).

The risk of neglecting thin-layer considerations is particularly acute where the thickness of a dilatant till approaches its nominally resolvable threshold. For these geometries (i.e. $h_d \approx \lambda/4$), Fig. 5 suggested that the composite AVA response was dominated by the reflection from the upper boundary of the thin-layer, and that from its lower boundary was masked. It is therefore possible that the properties of the underlying unit would be omitted from an interpretation. For example, Peters et al. (2007) use AVA responses to suggest that till deposits beneath Bindschadler Ice Stream (West Antarctica), between 5–20 m thick, are laterally variable and feature cyclic transitions between wet and stiff regimes. Thin-layer considerations allow an alternate model to be suggested, in which the substrate is extensively composed of stiff till, but with a wet till cap whose thickness varies laterally. Where the cap is absent, conventional AVA analysis is valid, and the properties of the stiff till can be recovered. However, where the thickness of the wet till approaches $\lambda/4$ (5 m for Peters et al., 2007), the reflection from the underlying stiff till is masked but the interface is nonetheless present in the substrate.

These interpretations are both plausible substrate geometries, but represent end-members of analysis. Conventional AVA interpretation accommodates all of the seismic variability in a bulk change in till properties and allocates a single set of quantities to the whole thickness of the substrate, whereas a thin-layer interpretation fixes those properties and accommodates any variability in a lateral change in the position of an additional interface. Both interpretations allow the presence of wet and stiff tills, but disagree on the nature of transitions between them. A useful progression from this research would therefore be determining a means of extracting the characteristics of two till types when the thin-layer is close to its resolvable threshold.

7 Conclusions

Seismic AVA analysis is a powerful method for quantifying the physical properties of subglacial material, although serious misinterpretations can result where thin stratifications are present in the substrate. Here, we have shown how thin layer effects manifest themselves in glaciological AVA responses, and how they can then be interpreted in terms of the thickness, acoustic impedance and Poisson's ratio of the subglacial material. The recognition of thin layer AVA issues is an important step forward in improving the potential to image and characterise the subglacial environment, a key aspect given the importance of subglacial processes in predictive ice-flow models and palaeo-reconstruction. We would therefore recommend that thin-layer AVA considerations become

a routine part of interpretation, particularly where stratified subglacial deposits are anticipated.

Acknowledgements. ADB was funded at Swansea University by a Leverhulme Trust Research Leadership project, F/00391/J, and the Climate Change Consortium of Wales (C3W). SD is funded by an Aberystwyth University grant. Field campaign supported by: Greenland Analogue Project: Sub-Project A, funded by SKB, Posiva and NWMO; Natural Environment Research Council grants NE/G007195/1 and NE/H0126889/1. Landmark Strategic University Alliance grants *ProMAX*TM access to the University of Leeds, under agreement 2004-COM-024982. Alessio Gusmeroli, Christine Dow and Glenn Jones assisted with data acquisition. Constructive discussions with Benedict Reinardy during manuscript preparation were greatly appreciated. Insightful and rigorous reviews from Andy Smith, Olaf Eisen and Rob Bingham greatly improved the quality of this paper.

Edited by: C. O'Cofaigh

References

- Abercrombie, R. E. and Rice, J. R.: Can observations of earthquake scaling constrain slip weakening?, *Geophys. J. Int.*, 162, 406–424, doi:10.1111/j.1365-246X.2005.02579.x, 2005.
- Aki, K. and Richards, P. G.: *Quantitative Seismology*, University Science Books, 2nd Ed., 123–144, 2002.
- Anandakrishnan, S.: Dilatant till layer near the onset of steaming flow of Ice Stream C, West Antarctica, determined by AVO (amplitude vs. offset) analysis, *Ann. Glaciol.*, 36, 283–286, 2003.
- Ayres, A. and Theilen, F.: Preliminary laboratory investigations into the attenuation of compressional and shear waves on near-surface marine sediments, *Geophys. Prospect.*, 49, 120–127, doi:10.1046/j.1365-2478.2001.00243.x, 2001.
- Bakke, N. E. and Ursin, B.: Thin-bed AVO effects, *Geophys. Prospect.*, 46, 571–587, doi:10.1046/j.1365-2478.1998.00101.x, 1998.
- Best, A. I., McCann, C., and Sothcott, J.: The relationships between the velocities, attenuations and petrophysical properties of reservoir sedimentary rocks, *Geophys. Prospect.*, 42, 151–178, doi:10.1111/j.1365-2478.1994.tb00204.x, 1994.
- Booth, A. D., Kulesa, B., Hubbard, A. L., Gusmeroli, A., Doyle, S., Dow, C. F., Jones, G., Murray, T., and Clark, R. A.: Seismic characterisation of subglacial material around a supraglacial meltwater lake, Russell Glacier, West Greenland, EGU General Assembly, Vienna, Austria, EGU2011-4682, 2011.
- Bouchon, M.: A simple method to calculate Green's Functions for elastic layered media, *B. Seismol. Soc. Am.*, 71, 959–971, 1981.
- Boulton, G. S., Dobbie, K. E., and Zatsepin, S.: Sediment deformation beneath glaciers and its coupling to the subglacial hydraulic system, *Quatern. Int.*, 86, 3–28, doi:10.1016/S1040-6182(01)00048-9, 2001.
- Bourbié, T. and Nur, A.: Effects of attenuation on reflections: experimental test, *J. Geophys. Res.*, 89, 6197–6202, doi:10.1029/JB089iB07p06197, 1984.
- Bradford, J. H., Nichols, J., Mikesell, T. D., and Harper, J. T.: Continuous profiles of electromagnetic wave velocity and water con-

- tent in glaciers: an example from Bench Glacier, Alaska, USA, *J. Glaciol.*, 50, 1–9, doi:10.3189/172756409789097540, 2009.
- Burgess, E. W., Forster, R. R., Larsen, C. F., and Braun, M.: Surge dynamics on Bering Glacier, Alaska, in 2008–2011, *The Cryosphere Discuss.*, 6, 1181–1204, doi:10.5194/tcd-6-1181-2012, 2012.
- Clarke, G. K. C.: Subglacial till: A physical framework for its properties and processes, *J. Geophys. Res.*, 92, 9023–9036, doi:10.1029/JB092iB09p09023, 1987.
- Clarke, G. K. C., Collins, S. G., and Thompson, D. E.: Flow, thermal structure and subglacial conditions of a surge-type glacier, *Can. J. Earth Sci.*, 21, 232–240, 1984.
- Cohen, D., Iverson, N. R., Hooyer, T. S., Fischer, U. H., Jackson M., and Moore, P. L.: Debris-bed friction of hard-bedded glaciers, *J. Geophys. Res.*, 110, F02007, doi:10.1029/2004JF000228, 2005.
- Dasgupta, R. and Clark, R. A.: Estimation of Q from surface seismic reflection data, *Geophysics*, 63, 2120–2128, doi:10.1190/1.1444505, 1998.
- Echelmeyer, K. and Wang, Z.: Direct observation of basal sliding and deformation of basal drift at sub-freezing temperatures, *J. Glaciol.*, 33, 83–98, 1987.
- Emerson, L. F. and Rempel, A. W.: Thresholds in the sliding resistance of simulated basal ice, *The Cryosphere*, 1, 11–19, doi:10.5194/tc-1-11-2007, 2007.
- Evans, D. J. A., Phillips, E. R., Hiemstra, J. F., and Auton, C. A.: Subglacial till: Formation, sedimentary characteristics and classification, *Earth-Sci. Rev.*, 78, 115–176, doi:10.1016/j.earscirev.2006.04.001, 2006.
- Gerçek, H.: Poisson's ratio values for rocks, *Int. J. Rock Mech. Min.*, 44, 1–13, doi:10.1016/j.ijrmm.2006.04.011, 2007.
- Greener, P.: AVO and Poisson's ratio, *The Leading Edge*, 22, 70–72, 2003.
- Gusmeroli, A., Clark, R. A., Murray, T., Booth, A. D., Barrett, B., and Kulesa, B.: Seismic wave attenuation in the uppermost glacier ice of Storglaciären, *J. Glaciol.*, 54, 939–942, doi:10.3189/002214310791968485, 2010.
- Gusmeroli, A., Pettit, E., Kennedy, J. H., and Ritz, C.: The crystal fabric of ice from full-waveform borehole sonic logging, *J. Geophys. Res.*, doi:10.1029/2012JF002343, in press 2012.
- Hall, M.: Predicting bed thickness with cepstral decomposition, *The Leading Edge*, 25, 199–204, 2006.
- Horgan, H. W., Anandakrishnan, S., Alley, R. B., Peters, L. E., Tsoflias, G. P., Voigt, D. E., and Winberry, J. P.: Complex fabric development revealed by englacial seismic reflectivity, Jakobshavn Isbræ, Greenland, *Geophys. Res. Lett.*, 35, L10501, doi:10.1029/2008GL033712, 2008.
- Iken, A. and Bindshadler, R. A.: Combined measurements of subglacial water pressure and surface velocity of Findelengletscher, Switzerland: conclusions about drainage system and sliding mechanism, *J. Glaciol.*, 32, 101–119, 1986.
- Iverson, N. R.: Shear resistance of subglacial till: hydrology rules, *J. Glaciol.*, 56, 1104–1114, doi:10.3189/002214311796406220, 2011.
- Iverson, N. R., Hoover, T. S., and Baker, R. W.: Ring-shear studies of till deformation: Coulomb-plastic behaviour and disturbed strain in glacier beds, *J. Glaciol.*, 44, 634–642, 1998.
- Iverson, N. R., Cohen, D., Hooyer, T. S., Fischer, U. H., Jackson, M., Moore, P. L., Lappégard, G., and Kohler, J.: Effects of basal debris on glacier flow, *Science*, 301, 81–84, 2003.
- Kennett, B. L. N.: Seismic wave propagation in stratified media, Cambridge University Press, 1983.
- Kennett, B. L. N. and Kerry, H. J.: Seismic waves in a stratified half-space, *Geophys. J. Roy. Astr. Soc.*, 57, 557–583, 1979.
- King, E. C., Smith, A. M., Murray, T., and Stuart, G. W.: Glacier-bed characteristics of midtre Lovénbreen, Svalbard, from high-resolution seismic and radar surveying, *J. Glaciol.*, 54, 145–156, doi:10.3189/002214308784409099, 2003.
- Kohnen, H.: The temperature dependence of seismic waves in ice, *J. Glaciol.*, 13, 144–147, 1974.
- Kulesa, B., Stuart, G., Hobbs, A., and Booth, A. D.: Subglacial hydromechanical processes from seismic amplitude versus offset (AVO) monitoring, European Geosciences Union General Assembly, Vienna, Austria, EGU2008-A-06080, 2008.
- Lin, L. and Phair, R.: AVO tuning, 63rd Society of Exploration Geophysicists Meeting, Washington DC, USA, Expanded Abstracts, 727–730, 1993.
- Lindsey, J. P.: The Fresnel zone and its interpretive significance, *The Leading Edge*, 8, 33–39, 1989.
- Lines, L., Vasheghani, F., and Treitel, S.: Reflections on Q, *CSEG Recorder*, 36–38, December 2008.
- Mallick, S. and Frazer, N. L.: Practical aspects of reflectivity modelling, *Geophysics*, 52, 1355–1364, doi:10.1190/1.1442248, 1987.
- Mavko, G., Mukerji, T., and Dvorkin, T.: The rock physics handbook, Cambridge University Press, 2nd Ed., 2009.
- Morozov, I. B.: Anelastic acoustic impedance and the correspondence principle, *Geophys. Prospect.*, 59, 24–34, doi:10.1111/j.1365-2478.2010.00890.x, 2011.
- Murray, T., Strozzi, T., Luckman, A., Jiskoot, H., and Christakos, P.: Is there a single surge mechanism? Contrasts in dynamics between glacier surges in Svalbard and other regions, *J. Geophys. Res.*, 108, 2237, doi:10.1029/2002JB001906, 2003.
- Ng, F. S. L.: Canals under sediment-based ice sheets, *Ann. Glaciol.*, 30, 146–152, 2000.
- Nolan, M. and Echelmeyer, K.: Seismic detection of transient changes beneath Black Rapids Glacier, Alaska, USA: II. Basal Morphology and processes, *J. Glaciol.*, 45, 132–146, 1999.
- Odebeatu, E., Zhang, J., Chapman, M., and Li, X.-Y.: Application of spectral decomposition to detection of dispersion anomalies associated with gas saturation, *The Leading Edge*, 25, 206–210, 2006.
- Pattyn, F.: Numerical modelling of a fast-flowing outlet glacier: experiments with different basal conditions, *Ann. Glaciol.*, 23, 237–246, 1996.
- Payne, A.: A thermomechanical model of ice flow in West Antarctica, *Clim. Dynam.*, 15, 115–125, 1999.
- Perroud, H. and Tygel, M.: Nonstretch NMO, *Geophysics*, 69, 599–607, doi:10.1190/1.1707080, 2004.
- Peters, L. E. and Anandakrishnan, S.: Measurements of seismic attenuation in ice: A potential proxy for englacial temperature?, American Geophysical Union, Fall Meeting 2010, San Francisco, USA, C21A-0511, 2010.
- Peters, L. E., Anandakrishnan, S., Alley, R. B., and Smith, A. M.: Extensive storage of basal meltwater in the onset region of a major West Antarctic ice stream, *Geology*, 35, 251–254, doi:10.1130/G23222A.1, 2007.
- Peters, L. E., Anandakrishnan, S., Holland, C. W., Horgan, H. J., Blakenship, D. D., and Voigt, D. E.: Seismic detection of a sub-

- glacial lake near South Pole, Antarctica, *Geophys. Res. Lett.*, 35, L23501, doi:10.1029/2008GL035704, 2008.
- Peters, L. E., Anandakrishnan, S., Alley, R. B., and Voigt, D. E.: Seismic attenuation in glacier ice: A proxy for englacial temperature, *Geophys. Res. Lett.*, 117, F02008, doi:10.1029/2011JF002201, 2012.
- Pimentel, S., Flowers, G. E., and Schoof, G. E.: A hydrologically coupled higher-order flow-band model of ice dynamics with a Coulomb friction sliding law, *J. Geophys. Res.*, 115, F04023, doi:10.1029/2009JF001621, 2010.
- Porter, P. R. and Murray, T.: Mechanical and hydraulic properties of till beneath Bakaninbreen, Svalbard, *J. Glaciol.*, 47, 167–175, doi:10.3189/172756501781832304, 2001.
- Quintal, B., Schmalholz, S. M., and Podladchikov, Y. Y.: Low-frequency reflections from a thin layer with high attenuation caused by interlayer flow, *Geophysics*, 74, N15–N23, doi:10.1190/1.3026620, 2009.
- Reinardy, B. T. I., Larter, R. D., Hillenbrand, C.-D., Murray, T., Hiemstra, J. F., and Booth, A.: Steaming flow of an Antarctic Peninsula palaeo ice-stream by both basal sliding and deformation of substrate, *J. Glaciol.*, 57, 596–608, doi:10.3189/002214311797409758, 2011.
- Richards, M. A.: Seismic evidence for a weak basal layer during the 1982 surge of Variegated Glacier, Alaska, USA, *J. Glaciol.*, 34, 111–120, 1988.
- Riedel, M. and Theilen, F.: AVO investigations of shallow marine sediments, *Geophys. Prospect.*, 49, 198–212, doi:10.1046/j.1365-2478.2001.00246.x, 2001.
- Roethlisberger, H.: Seismic exploration in cold regions, I. CRREL Monogr., 11-A 2a, Cold Reg. Res. and Eng. Lab., Hanover, N.H., 1972.
- Röthlisberger, H.: Water pressure in intra- and subglacial channels, *J. Glaciol.*, 11, 177–203, 1972.
- Rubino, J. G. and Velis, D.: Thin-bed prestack spectral inversion, *Geophysics*, 74, R49–R57, doi:10.1190/1.3148002, 2009.
- Sain, K., Singh, A. K., Thakur N. K., and Khanna, R.: Seismic quality factor observations for gas-hydrate-bearing sediments on the western margin of India, *Mar. Geophys. Res.*, 30, 137–145, doi:10.1007/s11001-009-9073-1, 2009.
- Sain, K. and Singh, A. K.: Seismic quality factors across a bottom simulating reflector in the Makran Accretionary Prism, Arabian Sea, *Mar. Pet. Geol.*, 28, 1838–1843, doi:10.1016/j.marpetgeo.2011.03.013, 2011.
- Sergienko, O. and Hulbe, C. L.: “Sticky spots” and subglacial lakes under ice streams of the Siple Coast, Antarctica, *Ann. Glaciol.*, 52, 18–22, 2011.
- Sheriff, R. E. and Geldart, L. P.: *Exploration Seismology*, Cambridge University Press, 2nd Ed., p. 138, 1999.
- Shuey, R. T.: A simplification of the Zoeppritz equations, *Geophysics*, 50, 609–614, doi:10.1190/1.1441936, 1985.
- Simm, R., White, R., and Uden, R.: The anatomy of AVO crossplots, *The Leading Edge*, February, 150–155, doi:10.1190/1.1438557, 2000.
- Smith, A. M.: Basal conditions on Rutford Ice Stream, West Antarctica, from seismic observations, *J. Geophys. Res.*, 102, 435–552, doi:10.1029/96JB02933, 1997.
- Smith, A. M.: Subglacial bed properties from normal-incidence seismic reflection data, *J. Env. Eng. Geoph.*, 12, 3–13, doi:10.2113/JEEG12.1.3, 2007.
- Swan, H. W.: Amplitude-versus-offset measurement errors in a finely layered medium, *Geophysics*, 64, 678–690, doi:10.1190/1.1442956, 1991.
- Truffer, M., Echelmeyer, K., and Harrison, W. D.: Implications of till deformation on glacier dynamics, *J. Glaciol.*, 47, 123–134, doi:10.3189/172756501781832449, 2001.
- Tsvankin, I.: Seismic Signatures and Analysis of Reflection Data, in: *Anisotropic Media, Handbook of Geophysical Exploration, Seismic Exploration*, edited by: Helbig, K. and Treitel, S., Pergamon, The Netherlands, 2001.
- Vaughan, D. G., Smith, A. M., Nath, P. N., and Le Meur, E.: Acoustic impedance and basal shear stress beneath four Antarctic ice streams, *Ann. Glaciol.*, 36, 225–232, doi:10.3189/172756403781816437, 2003.
- Walder, J. S. and Fowler, A.: Channelized subglacial drainage over a deformable bed, *J. Glaciol.*, 40, 3–15, 1994.
- Widess, M. B.: How thin is a thin bed?, *Geophysics*, 38, 1176–1180, doi:10.1190/1.1440403, 1973.
- Willis, I. C., Fitzsimmons, C. D., Melvold, K., Andreassen, L. M., and Giesen, R. H.: Structure, morphology and water flux of a subglacial drainage system, Midtdalsbreen, Norway, *Hydrol. Process.*, doi:10.1002/hyp.8431, early view, 2012.
- Woodward, J., Murray, T., Clark, R. A., and Stuart, G. W.: Glacier surge mechanisms inferred from ground-penetrating radar, Kongsvegen, Svalbard, *J. Glaciol.*, 49, 473–480, doi:10.3189/172756503781830458, 2003.
- Xu, D., Wang, Y., Qigan, G., and Jianming, T.: Frequency-dependant seismic reflection coefficient for discriminating gas reservoirs, *J. Geophys. Eng.*, 8, 508–513, doi:10.1088/1742-2132/8/4/003, 2011.
- Xu, X., and Tsvankin, I.: A case study of azimuthal AVO analysis with anisotropic spreading correction, *The Leading Edge*, 1552–1561, December 2007.
- Yilmaz, O.: *Seismic Data Analysis: Processing, Inversion and Interpretation of Seismic Data*, vol. 1, Society of Exploration Geophysics, Tulsa USA, p. 485, 2001.