

Research Article



Doi: 10.4274/npa.y6911

(Archives of Neuropsychiatry 2014; 51: 148-156)

(Nöropsikiyatri Arşivi 2014; 51: 148-156)

148

If Neurologists Establish The Diagnosis of Primary Sjogren's Syndrome? Nörologlar Nasıl Primer Sjögren Sendromu Tanısı Koyar?

Sibel KARACA¹, Emine Duygu ERSÖZLÜ BOZKIRLI², Başak KARAKURUM GÖKSEL¹, Meliha TAN¹, Ahmet Eftal YÜCEL³¹Başkent University Faculty of Medicine, Adana Research and Application Center, Department of Neurology, Adana, Turkey²Başkent University Faculty of Medicine, Adana Research and Application Center, Department of Rheumatology, Adana, Turkey³Başkent University Faculty of Medicine, Department of Rheumatology, Ankara, Turkey

ABSTRACT

Introduction: Neurological involvements were shown in 20% of patients with Primary Sjogren's Syndrome (pSS). Neurological symptoms may be the first signs of pSS in 57% of the cases. In addition, early diagnosis and treatment of neurological disorders may save or improve the quality of life of these cases. There have been reports about the neurologic manifestations of pSS but little is known about the details of neurologically presented cases.

Method: In this study, we described 11 pSS patients who presented with neurological manifestations.

Results: Central nervous system (CNS) involvement was recorded in 7 (63.7%) and peripheral nervous system (PNS) involvement in 4 cases (36.4%).

Conclusion: Our findings regarding the cases with neurological manifestations leading to the diagnosis of pSS suggest that: 1) The frequency of CNS involvement was higher than that of PNS, and the most frequent clinical pictures of CNS involvement are Multiple Sclerosis (MS)-like illnesses and optic neuritis, 2) Guillain Barre Syndrome (GBS) was the most frequent disease of PNS involvement; 3) Mononeuropathy multiplex (MM) might be the first sign of pSS; 4) Neurologists should consider pSS in the differential diagnosis of cases with MS, optic neuritis, GBS and neuropathies of unknown causes including MM; 5) There is an urgent need of therapeutical guidelines for the cases with neurological involvement associated with pSS. (*Archives of Neuropsychiatry 2014; 51: 148-156*)

Key words: Primary Sjogren's syndrome (pSS), neurological manifestations, central nervous system (CNS), peripheral nervous system (PNS)

Conflict of interest: The authors reported no conflict of interest related to this article.

ÖZET

Giriş: Primer Sjögren Sendromlu (PSS) hastaların %20'sinde nörolojik tutulum olduğu gösterilmiştir. Olguların %57'sinde ise ilk olarak nörolojik belirtiler ortaya çıkmaktadır. Nörologların bu belirtileri erkenden tespit etmesi ve PSS tedavisine başlanması ile hastaların yaşamı kurtarılabilen ve/veya yaşam kalitesi artırılabilir. PSS ile ilişkili nörolojik hastalıklar oldukça iyi tanımlanmıştır ancak nörolojik bulgularla prezante olan olgularda PSS tanısı için detaylı bilgi bulunmamaktadır.

Yöntem: Bu çalışmada nörolojik bulgular ile başvuran 11 hastada PSS tanımlanmıştır.

Bulgular: Yedi olguda (%63,7) merkezi sinir sistemi (CNS) tutulumu belirlenirken, 4 olguda (%36,4) periferik sinir sistemi (PNS) tutulumu saptanmıştır.

Sonuç: Nörolojik hastalıkları nedeniyle PSS tanısı alan bu olguların değerlendirilmesi sonucu bulgularımız şunlardır: 1) PSS'in ilk bulgusu olarak CNS tutulumu, PNS tutulumundan daha sık ortaya çıkmaktadır, CNS tutulumu ile giden klinik tablolardan en sık Multiple Skleroz (MS) benzeri hastalık ve optik nevrit görülmektedir; 2) Guillain Barre Sendromu (GBS) PNS tutulumu ile ilişkili en sık gözlenen klinik tablodur; 3) Mononöropati multipleks (MM) PSS'nin ilk işareti olabilmektedir; 4) Nörologların MS, optik nevrit ve GBS yanı sıra MM dâhil tüm nedeni bilinmeyen nöropati olgularının ayırıcı tanısında PSS düşünmesi gerekmektedir; 5) PSS ile ilişkili nörolojik tutulumu olan olgular için acil olarak tedavi kılavuzuna ihtiyaç bulunmaktadır. (*Nöropsikiyatri Arşivi 2014; 51: 148-156*)

Anahtar kelimeler: Primer Sjögren Sendromu (PSS), nörolojik bulgular, merkezi sinir sistemi (CNS), periferik sinir sistemi (PNS)

Çıkar çatışması: Yazarlar bu makale ile ilgili olarak herhangi bir çıkar çatışması bildirmemişlerdir.

Correspondence Address/Yazışma Adresi

Sibel Karaca MD, Başkent University Faculty of Medicine, Adana Research and Application Center, Department of Neurology, Adana, Turkey

Gsm: +90 505 675 74 47 E-mail: sibelemre2003@yahoo.com **Received/Geliş tarihi:** 21.12.2012 **Accepted/Kabul tarihi:** 08.02.2013

© Archives of Neuropsychiatry, published by Galenos Publishing. / © Nöropsikiyatri Arşivi Dergisi, Galenos Yayınevi tarafından basılmıştır.

Introduction

Sjogren's Syndrome (SS) is a chronic autoimmune disorder described as autoimmune epithelitis. It is characterized by dryness of the eyes (xerophthalmia) and mouth (xerostomia) due to lymphocytic infiltration of the exocrine glands (1). These two findings are called "sicca symptoms". After rheumatoid arthritis, SS is the second most common systemic autoimmune disease affecting adults in the United States, with an annual incidence of 3.9-5.3/100 000 inhabitants (2). As with other autoimmune diseases, SS is more common in females than in males; female to male ratio is 9:1 (3). SS can occur alone (primary Sjogren's syndrome: PSS) or secondary in association with other connective tissue disorders (mainly systemic lupus erythematosus, rheumatoid arthritis, or scleroderma) (4,5). Approximately 50% of the patients have PSS (3). The exact cause of SS is not known. It is known that genetic, infectious, endocrine and immunological mechanisms contribute to the development of the disease.

The American-European Consensus Criteria for SS are now widely accepted (6); this set of criteria includes two subjective measures of ocular and oral dryness and four objective measures of gland involvement and elevated autoantibody titers. Having PSS according to this classification requires four of six criteria, of which at least one to be a positive minor salivary gland biopsy or elevated titers of SS (A) and/or SS (B) antibodies. The diagnosis can also be made if three of the four objective criteria are present (6).

However, as a systemic rheumatic disease, there can be various "extra-glandular" complications of SS (similar mononuclear infiltrates invading visceral organs or vasculitic lesions), at least one third of the patients present with neurological, rheumatologic, pulmonary, or gastrointestinal manifestations (7). Systemic involvement can be divided as non-visceral (skin, arthralgia, and myalgia) and visceral involvement [liver, kidney, gastrointestinal, endocrine, central nervous system (CNS), peripheral nervous system (PNS)] (8). A wide variety of PNS and CNS complications are among some severe extra-glandular complications of SS (9,10,11,12,13).

Prevalence of PNS involvement in PSS varies widely from 10 to 60%, with pure or predominantly sensory polyneuropathies as the most common neurological manifestations (sensory ataxic or small fiber sensory painful neuropathy) (12,14,15,16). Mononeuropathy multiplex (MM), polyradiculopathy, symptomatic dysautonomia, myopathy, cranial neuropathy and CNS involvement are less common.

CNS manifestations due to PSS are still a matter of discussion and the reported prevalence of CNS involvement ranges from 2% to 25% (10,11,12,13,15,17). According to Massara et al., CNS involvement is frequently the initial manifestation of PSS when mild complaints of sicca symptoms could be overlooked (18). CNS involvement in PSS can be seen in 4 clinical types: 1) diffuse (encephalomyelitis, aseptic meningitis, neuropsychiatric dysfunctions) involvement-accounts for 40%-; 2) focal/multifocal (sensorial and motor deficits, brain stem, cerebellar lesions, seizure, migraine etc.) and spinal cord (myelopathy, transverse

myelitis, motor neuron disease etc.) findings-about 36%-; 3) multiple sclerosis (MS) -like illnesses (seen in 20%-; and 4) isolated optic neuritis-observed in 4% of patients- (18).

Extra-epithelial involvement (glomerulonephritis, polyneuropathy, vasculitis, purpura) increases morbidity and mortality (19). Thus, it is important to diagnose and treat these complications. Neurologist should be aware of neurological involvements of PSS which can be seen either in the course of the disease or as a presentation sign at onset.

In this report, 11 cases diagnosed with PSS based on the neurological findings are presented. The patients' clinical symptoms, neurological and laboratory findings, treatments and responses to the treatments are also discussed.

Methods

Eleven patients admitted to the neurology department with neurological findings were evaluated through detailed history and neurological examination. For the diagnosis, magnetic resonance imaging of the brain spine, electroencephalogram (EEG), electroneuromyography and cerebrospinal fluid (CSF) analyses were performed. Based on the clinical findings, further investigations were carried out for a definitive diagnosis.

All patients were evaluated for the presence of a connective tissue disorder, symptoms of xerostomia, xerophthalmia, and ulcers of external genitalia and/or the oral region, and they all underwent routine biochemical tests and urinalysis and fibrinogen, serum protein electrophoresis, antinuclear antibody (ANA), anti-double stranded nuclear antibody (anti-dsDNA), rheumatoid factor (RF), anti-SS (A), and anti-SS (B) antibodies tests. Later, they were evaluated by an ophthalmologist, and Schirmer tests were conducted. Salivary gland function tests were not carried out, but salivary gland biopsies from 6 patients were studied. Additionally, CSF analysis was made in 8 patients; 3 patients refused lumbar puncture.

Results

1. Clinical Results

Eight of the 11 cases (72.8%) admitted to the neurology department were female and 3 were (27.2%) male, with a mean age of 41.9 years (21-67 years). Neurological manifestations had started with either acute or subacute patterns. All the patients suffered from neurological symptoms first, and later, they were diagnosed as having PSS. Table 1 summarizes these patients' clinical, laboratory and outcome findings. Table 2 illustrates the diagnostic criteria of PSS for each case.

PNS manifestations were noted in 4 patients (36.4%): 3 were diagnosed with acute GBS due to PSS (80%), and 1 with MM.

Seven patients (63.7%) showed signs of CNS involvement, 2 were diagnosed with MS-like illnesses, 2 (18.2%) with cranial nerve involvements as isolated optic neuritis, 1 with recurrent form of ADEM, 1 with multiple contrast-enhanced lesions of the infratentorial cerebral region due to PSS, and 1 patient with

Table 1. Revised international classification criteria for Sjögren's syndrome (6)**I. Ocular symptoms: a positive response to at least one of the following questions:**

1. Have you had daily, persistent, troublesome dry eyes for more than 3 months?
2. Do you have a recurrent sensation of sand or gravel in the eyes?
3. Do you use tear substitutes more than 3 times a day?

II. Oral symptoms: a positive response to at least one of the following questions:

1. Have you had a daily feeling of dry mouth for more than 3 months?
2. Have you had recurrently or persistently swollen salivary glands as an adult?
3. Do you frequently drink liquids to aid in swallowing dry food?

III. Ocular signs—that is, objective evidence of ocular involvement defined as a positive result for at least one of the following two tests:

1. Schirmer's test, performed without anaesthesia (≤ 5 mm in 5 minutes).
2. Rose-bengal score or other ocular dye score (≥ 4 according to van Bijsterveld's scoring system).

IV. Histopathology: In minor salivary glands (obtained through normal-appearing mucosa) focal lymphocytic sialoadenitis, evaluated by an expert histopathologist, with a focus score ≥ 1 , defined as a number of lymphocytic foci (which are adjacent to normal-appearing mucous acini and contain more than 50 lymphocytes) per 4 mm² of glandular tissue.

V. Salivary gland involvement: objective evidence of salivary gland involvement defined by a positive result for at least one of the following diagnostic test:

1. Unstimulated whole salivary flow (≤ 1.5 ml in 15 minutes).
2. Parotid sialography showing the presence of diffuse sialectasis (punctate, caviatary or destructive pattern), without evidence of obstruction in the major ducts.
3. Salivary scintigraphy showing delayed uptake, reduced concentration and/or delayed excretion tracer.

VI. Autoantibodies: presence in the serum of the following autoantibodies: Antibodies to Ro (SSA) or La (SSB) antigens, or both.

For primary SS in 7 patients without any potentially associated disease, primary SS may be defined as follows:

- a) The presence of any 4 of the 6 items is indicative of primary SS, as long as either item IV Histopathology) or VI (Serology) is positive.
- b) The presence of any 3 of the 4 objective criteria items (that is, items III, IV, V, VI).
- c) The classification tree procedure represents a valid alternative method for classification, although it should be more properly used in clinical-epidemiological survey.

Exclusion criteria

- a) Past head and neck radiation treatment
- b) Hepatitis C infection
- c) Acquired immunodeficiency disease (AIDS)
- d) Pre-existing lymphoma
- e) Sarcoidosis
- f) Graft versus host disease
- g) Use of anticholinergic drugs (since a time shorter than 4-fold the half life of the drug)

Table 2. Clinical aspects, laboratory and outcome findings of 11 primary Sjogren's Syndrome (pSS) patients with initial neurologic manifestations

Patient	Age/sex	General signs/history	Neurological examination	Brain and Spine MRI	EMMG	CSF	Other Laboratory Tests	Treatment	Diagnosis/Outcome
1	34/F	Sense of oily taste, left hemiparesia, vertigo and ataxia, loss of weight	Dysarthria, left hemiparesia and cerebellar signs, bilateral Babinski, positive Romberg	Contrast enhanced lesions in pons, both cerebellar peduncles and left m. oblongata	ND	glucose: 76mg/dl (204) pro: 52 mg/dl 50 wbc (98%lymphocte, 2% PNML), 200 rbc	ESR:34 mm CRP<3	Pulse methylprednisolone; pulse cyclophosphamide	Recurrent acute disseminated encephalomyelitis (ADEM) due to pSS Exitus due to pontine hemorrhage
2	27/M	Ascendan numbness and paresia from legs to arms, skin eruptions on legs	Distally dominant paraparesia, loss of DTR and vibration, glove and socks type sensation disorder, steppage gait	Brain and whole spinal MRI: normal except multiple cysts on parotis glands	Mono-neuropathy multiplex	NL	SEP; no response in lower extremities VEP-BAEP: NL	Pulse methylprednisolone and azathioprine with klorkokin	Mononeuropathy multiplex (MM) due to pSS Stabil neurologic state with mild distal paresia
3	30/M	Acute onset right side hemiparesia	Right central facial paresia, moderate (3/5) right hemiparesia and dysarthria, hemihypo-aesthesia	Brain MRI: acute infarction on posterior leg of the left internal capsule Carotid anogram:NL	ND	ND	CRP:11 Homocystein:10.33 LDL:172 Triglyceride: 328 EKG and echo :NL Genetic predisposition to thrombosis tests: NL Carotid-vertebral Doppler USG: NL	Acetylsalisiic aside	Cerebral ischemic stroke related to pSS Full recovery
4	67/F	Acute onset loss of vision on right side	Right afferent pupil defect	Brain and Orbita MRI: expansion of subarachnoidal space around the right optic nerve with non specific ischemic lesions in cerebral hemispheres	NL	ND	VEP: Prechiasmatic visual pathway disorder Temporal artery Doppler: NL ESR:28 CRP:4 B12:93	Azathioprine after pulse cyclophosphamide	Optic Neuritis due to pSS Recovery with moderate neurologic deficits
5	53/F	Loss of weight, difficulty in speaking and walking, right sided hemihypo-aesthesia	Mild impairment of cerebellar tests, hyperactive DTR's, positive Romberg, wide based-ataxic gait	Cerebral MRI; contrast enhanced lesions in mesencephalon, pons, two cerebellar peduncles	NL	NL	Serebral angiogram: NL, thorax and abdominal CT: NL, mammography: NL, biomarkers for neoplasia and antineuronal antibodies: NL, serum infectious tests: NL	Pulse cyclophosphamide and methylprednisolone	Central nervous system (CNS) involvement of pSS Recovery with mild neurologic deficits
6	40/F	Ascending numbness of legs, ataxic gait difficulty	Moderate quadriparesia, hyperactive DTR's, nonresponsive Babinski reflexes	Brain MRI and angiogram: NL Spinal MRI: contrast enhancements of radices on lumbar level	Late responsive H reflexes and F responses due to polyradiculoneuritis	CSF/serum glucose: 65/122 mg/dl pro: 186 mg/dl acellular in microscopy, negative for oligoclonal bands, Ig G index: 0.54	SEP: delayed latency responses in upper extremities, no- response in lower extremities. Serum infectious test were negative for Lyme and brucella, HIV and CMV	Five courses of therapeutic plasma exchange (TPE), azathioprine after 8 cycles of pulse cyclophosphamide	Guillain Barre syndrome due to pSS Full recovery

7	39/F	Loss of vision in the right eye, she was previously diagnosed as Sjogren syndrome	Bilateral papilla edema with left hemifacial spasm	Brain and orbita MRI: bilateral enlargement of optic nerve sheaths Brain MRA: NL	ND	NL including pressure of CSF	VEP: Bilateral late latency and deformed responses Visual field: bilateral serious concentric restriction Thorax and abdomen CT: Fatty liver tissue with biliary stones	Methylprednisolone with pulse cyclophosphamide	Bilateral optic neuritis related to pSS Stable for disease course
8	47/F	Right sided pins and needles with spasms, rarely generalized spasms	Lhermit's sign with DTR hyperactivity	Brain and spinal MRI: cord lesion extending from craniocervical junction to vertebrae C3 with left mesencephalic lesion, multiple spinal lesions (demyelinating)	NL	pressure: 140 mm Hg Ig G index: 0.49 CSF/serum glucose: 53/104 mg/dl pro: 24mg/dl 60 rbc and 10 wbc in microscopy oligoclonal bands, Antiaquaporine Antibody: (-)	BAEP, VEP: NL SEP: small amplitude and deformed responses. Thorax and abdomen CT: NL Mammography: NL Tumoral markers: (-) Protein electrophoresis: NL	Pulse cyclophosphamide with methylprednisolone	Multiple sclerosis-like illnesses due to pSS Full recovery
9	39/F	Progressive loss of strength in arms and legs causing gait difficulty	Gower's sign due to proximal limb weakness, hypoaactive DTR, positive Romberg sign with spastic and ataxic gait disturbance	Brain MRI: NL Spinal MRI: contrast enhancements of lumbar radices with protrusion and indentation to cord in the level of C5-6	Late responsive H reflexes and F responses due to polyradiculo- neuritis	CSF/serum glucose: 58/113 mg/dl pro: 67mg/dl 30 wbc in microscopy. Brusella and oligoclonal bands: negative Ig G index: 0.36	Abdominopelvic ultrasonography: fatty liver, renal calculi in the left, Hepatitis markers: anti HBs: (+)	5 courses of TPE, azathioprine and prednisolone after 19 cycles of pulse cyclophosphamide	Guillain Barre syndrome due to pSS Full recovery
10	64/F	Progressive loss of strength and, pin and needles with severe pain in arms and legs causing gait difficulty	Mostly distal, moderate quadriparesia, hyperactive DTR's nonresponsive Babinski, severe truncal ataxia	Brain, cervical and Lumbar spinal MRI: chronic parietooccipital ischemic lesions in cerebrum and, C6-7 narrow spinal canal in cervical region and, grade I spondylyolsthesis in the level of lumbar L4-5	Left sided carpal tunnel syndrome and axonal type motor polyradiculo- neuritis affecting lower extremities mostly	CSF/serum glucose: 80/82 mg/dl pro: 49mg/dl 20 wbc and 180 rbc in microscopy. Brusella and oligoclonal bands: negative	Abdominopelvic ultrasonography: granular liver tissue, Hepatitis markers: anti HBs and anti HAV : (+); others were all negative including anti HIV.	IVIg 25 gr/day for 6 days for a acute motor axonal neuropathy, after the diagnosis of pSS, methylprednisolone and plaqueryl were given by recommendations of Rheumatology clinic	Guillain Barre syndrome due to pSS Full recovery
11	21/M	Pins and needles sensation ascending from toes to chest; right hemifacial spasm	Non-specific and patchy sensation deficits throughout the body	Brain MRI: Contrast enhanced left parietal millimetric lesion with 3 spinal cord lesion (2 of them were contrast enhanced); from C2 to cervicomedullar junction, C3-4 and T3-4	ND (patient refused)	SEP: delayed median and tibial responses on right side. Methylprednisolone	IV pulse 1gr Methylprednisolone during 7 days, and tapered oral Methylprednisolone	Multiple sclerosis-like illnesses due to pSS Full recover	

Abbreviations: ND; not done, NL: in normal limits, MRI: magnetic resonance imaging, CSF: cerebrospinal fluid, ENMG: electroneuromyography, DTR: deep tendon reflexes, SEP: somatosensory evoked potentials, VEP: visual evoked potentials, BAEP: brainstem auditory evoked potentials, ESR: erythrocyte sedimentation rate, CRP: C reactive protein, IVig: intravenous immunoglobulins

right hemiparesia due to acute ischemic cerebral lesion in the posterior leg of the left internal capsule.

2. Laboratory Results

Electrophysiological examination was performed for 7 patients with signs and symptoms of peripheral neuropathies. While three of these patients showed normal results, 4 displayed findings compatible with peripheral neuropathy showing GBS in 3 cases, and MM in one patient. Of the patients with GBS, 2 had acute demyelinating type, and 1 was with motor axonal-type polyradiculoneuritis.

MRI of the brain (orbital MRI in 2 patients; spinal MRI in 6 patients) was performed for patients with signs and symptoms of CNS involvements in order to assess the brain, optic nerve, spinal column and type of such involvements. Brain MRIs were normal in 3 cases; enlargements of optic nerve sheaths were observed in 2, contrast-enhanced cerebral and/or spinal lesions in 4 patients, ischemic cerebral lesion was recorded in 1 patient with stroke, and contrast enhancements of lumbosacral radices were established in 3 GBS patients. Figures 1,2,3,4 show the MRI results in PSS patients with CNS involvements.

Lumbar puncture and CSF analysis were performed in eight patients (3 patients refused this procedure: 1 patient with cerebral infarction; 1 patient with optic neuritis who initially applied to the ophthalmology clinic and, 1 with a MS-like illness). CSF analysis revealed normal results in 4 patients; mild and moderate protein elevation and/or CSF pleocytosis were recorded in the remaining 4 patients. Somatosensory evoked potential (SEP) recordings of the patients with MM, GBS and MS-like illnesses showed delayed responses or unresponsiveness; visual evoked potential (VEP) responses were also pathological in 2 cases with optic neuritis.

3. Results of the treatments

Initially, all the patients with CNS involvements were prescribed pulse methylprednisolone 1 gram/kg for 5-7 days. The 2 of GBS patients were treated with 5 cycles of therapeutic plasma exchange (TPE), and 1 with intravenous immunoglobulin (IVIg), at a dose of .4 mg/kg/day for 5 days. Following the PSS diagnosis, treatment was conducted by a rheumatologist and all the patients were treated with pulse cyclophosphamide at a dose of 600 mg/m²/month for 8-19 months. Then, the treatment was maintained with azathioprine at a dose of 2-3 mg/kg/day, alone or in combination with oral methylprednisolone. Oral methylprednisolone dosages were arranged as a dose of 1 mg/kg/day initially, and tapered to a maintenance dose of 10-20 mg/day.

Neurological deficits improved significantly in all patients; only the patient with ADEM-like picture died because of pontine hemorrhage during the course of treatment.

Discussion

In our study, eleven patients were diagnosed with PSS based on their neurological symptoms. Of these patients, 63.7% with initial neurological manifestations displayed CNS manifestations, while 36.4% had PNS manifestations. In the report of Massara et al., CNS involvement was detected in 25 (5.8%) of 424 PSS patients, of which 13 (52%) presented with neurological manifestations and were later diagnosed with PSS (18). Delalande et al. retrospectively

studied 82 patients with neurological manifestations associated with PSS in which neurological findings were the preceding sign in 47% (11). It seems obvious that in half of PSS patients, the disease onset is in a neurological form. However, in Delalande's study, all of the neurological involvements were discussed both before and after the diagnosis of PSS. Nevertheless, all of the 11 patients in our study population were diagnosed with PSS due to the development of neurological findings. For the previously diagnosed PSS cases, it was reported that neurological involvements had developed after a mean elapsing time of 7 (20) and 8.3 years (18).

Delalande and his colleagues reported similar rates of CNS (68%) and PNS (62%) involvements in PSS (11). As in our series, in their study, neurologic symptoms at the onset of PSS involved the CNS more frequently than PNS. Before the report of Delalande et al., PNS involvement was described more frequently than CNS involvement. They hypothesized that the highly heterogeneous CNS involvement in PSS in previous reports might be related to the different diagnostic criteria of PSS, the definition of neurological involvement, and the selection of patients from the neurology, internal medicine, or rheumatology departments. In our study group, all the patients were admitted to our neurology department, and they were later evaluated by a rheumatologist. It can help to reduce the potential bias in the proportion of CNS involvement at onset of PSS. Indeed, the high proportion of the CNS involvement may be related with selection of these 11 patients from the neurology outpatient clinic.

In our study, PNS complications were the first symptom of PSS in 4 patients (36.4%); 3 were diagnosed with acute GBS due to PSS (80%), and 1 with MM. Although there have been anecdotal reports about coexistence of GBS and PSS, Delalande et al. noted polyradiculoneuritis in only one patient with known PSS (11). MM is also a rare clinical entity and in the literature, to date, only 1 patient has been reported to be diagnosed with PSS after the

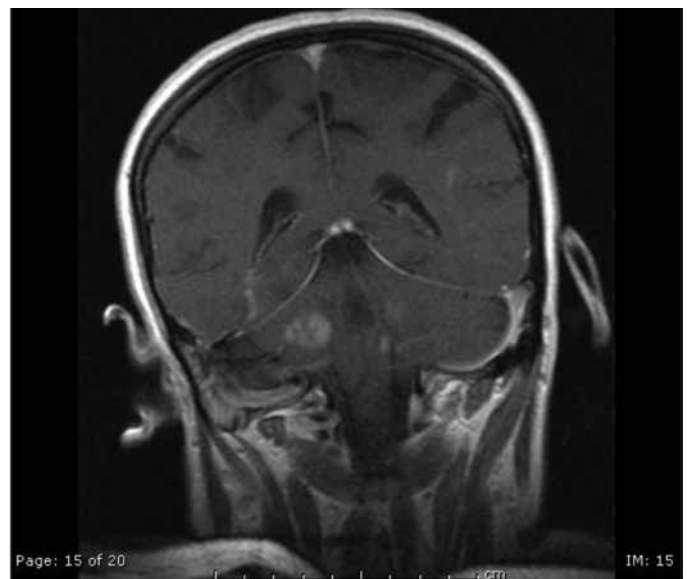


Figure 1. Contrast enhanced T1 weighted image revealed multiple, expansive hypointense lesions with contrast enhancements (Patient 1; Acute demyelinating encephalomyelitis (ADEM)-like picture due to primary Sjogren's Syndrome)

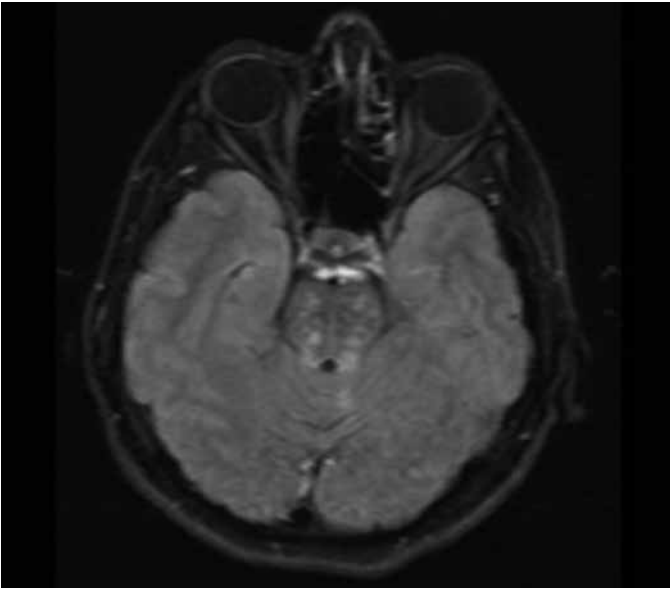


Figure 2. Axial fluid-attenuated inversion recovery (FLAIR) image demonstrates hyperintense lesions in pons (Patient 5; infratentorial cerebral lesions due to primary Sjogren's Syndrome)



Figure 4. T1 weighted post-contrast image of the cervical spine revealed contrast enhancement at the C1 and C3-4 region (Patient 11; Multiple Sclerosis-like illness due to primary Sjogren's Syndrome)

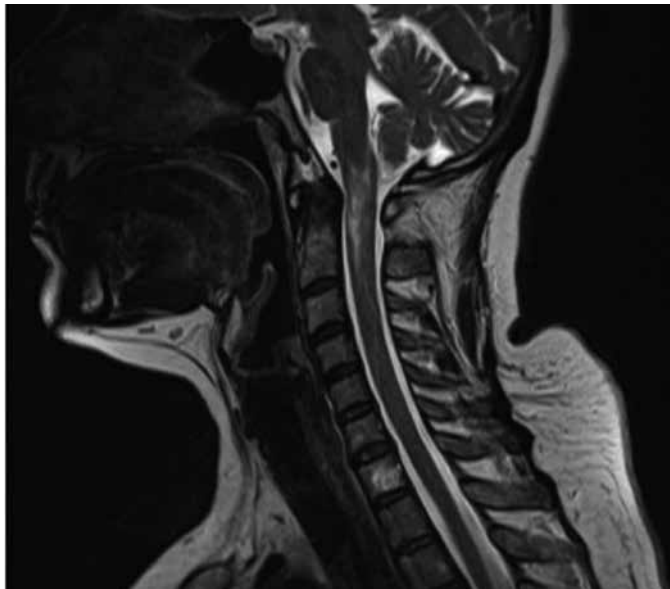


Figure 3. T2 weighted MRI images showed hyperintense lesion from medullar to C1 region (Patient 8; Multiple Sclerosis-like illness due to primary Sjogren's Syndrome)

diagnosis of MM (21). We suggest that the systematic screening for PSS is needed in cases of MM and polyradiculoneuritis as well as in cases of sensory, autonomic or trigeminal neuropathies of unknown causes.

Recent data concerning CNS involvement in PSS confirms the heterogeneity of clinical presentations that may mimic stroke or MS. In a report by Govoni et al., over a period of 5 years, CNS involvement was detected in 7 of 87 (8%) of unselected consecutive patients whose previous diagnosis was PSS (22). In our study, we identified 63.7% of patients (7/11) with CNS findings as initial clinical presentations of PSS; 5 of our patients had focal brain involvements yielding MS-like illnesses in 2 cases; one

patient had recurrent ADEM-like disease, infratentorial cerebral involvement, and acute ischemic stroke. Optic neuritis was observed in 2 patients.

MS-like syndromes could represent a particular subset of neuro-Sjögren, and may thus affect the outcome. One tenth to one third of the neurological forms of PSS cases presents with pictures like MS (9,11). Some researchers have also reported an increased frequency of PSS in patients with MS (20). In our study, 18.2% of the cases were diagnosed with MS-like illnesses. Although the rate is fairly high, when the patient showing ADEM-like picture is included, the rate would be much higher (27.3%). Therefore, a screening test for PSS should be considered in suspected MS cases. Delalende and coworkers described 23 of 82 patients (28%) with a clinical feature suggesting MS; they also observed that the delay between onset and the diagnosis of PSS was significantly longer (9.8 years) for their 10 patients with recurrent deficits mimicking relapsing-remitting MS (11). Thus, this finding underlines the need for screening test in PSS for the exact diagnosis in such MS-like cases. The neuroradiological features with serologic and CSF analysis could help to distinguish between these two inflammatory CNS diseases. MRI lesions are generally smaller and less pronounced in PSS than in MS (23). There are some characteristic features of MS-like illnesses of PSS, however, affecting patients of older age, involvement of PNS and/or cranial nerve, spinal cord MRI lesions spanning multiple spinal segments, MRI lesions of cerebral cortex, and absence of lesions in the corpus callosum are all atypical in MS (20,23,24). As it was also observed in our patients, the CSF profile of PSS strongly resembles the profile described in MS patients, yet in MS, there are multiple bands, often more than 3, whereas 1 or 2 bands can mostly be detected in PSS patients (9). Oligoclonal band studies

in our patients yielded negative results. Furthermore, Alexander et al. reported that the bands disappeared as a response to corticosteroid therapy in most neuro-Sjögren patients, contrary to that in those with MS (9).

Most of the cases with CNS manifestations associated with PSS had an acute, often recurrent course (11,18). It was concluded that severe disability was more frequent in cases of CNS involvement than in cases of PNS involvement, suggesting the need for intensive and early treatment in cases of CNS involvement (11). Contrary to this conclusion, spontaneous remission or only mild neurological impairment was deduced in patients with CNS involvement of PSS in another study (18). In line with the findings in the literature, the disease course of our patients with CNS involvements was in either acute or subacute fashion, and most of the patients recovered markedly (particular improvements were recorded in 4 patients) in spite of their serious clinical presentations. Only one patient with recurrent ADEM-like illness died due to a large pontine hemorrhage.

Bragoni reported a young woman with ischemic stroke as initial manifestations of SS (25). In our study, we defined PSS in a young man with right hemiparesia due to acute ischemic cerebral lesion in the posterior limb of the left internal capsule. Therefore, PSS should be considered among the causes of stroke, especially in young patients.

Although, optic neuritis was reported in 13 (15.9%) patients in Delalande's series of 82 patients with PSS, abnormal VEPs were obtained in 61% of tested patients (11). They did not provide any information on whether these optic involvements were seen at the onset or during the course of the disease. We defined isolated either unilateral or bilateral optic neuritis in two cases (18.2%) as initial manifestations of PSS, and, we also recommend the systematic screening for PSS in cases with optic neuropathy.

Treatments usually comprise symptomatic approach in milder cases, nevertheless, pulse cyclophosphamide and steroids or other immunosuppressants (chlorambucil or azathioprine) are required in cases with progressive symptoms leading to neurological impairment. We achieved fairly reliable results with TPE and IVIg in cases with GBS and, we used corticosteroids in a certain number of our patients. The need for therapeutic guidelines is obvious, and further research should be conducted to gain deeper insight into this area. It was demonstrated that corticosteroid therapy is a likely candidate for MM and multiple cranial neuropathies (26,27), and favorable improvement may be seen in painful dysaesthesia of painful sensory neuropathy and radiculoneuropathy forms with IVIg therapy (27,28,29,30). In addition to corticosteroids and IVIg, plasmapheresis (31), D-penicillamine (32), anti-TNF agent, and infliximab (33) have been used with variable responses. Patients with myelopathy or MM have responded well to cyclic application of cyclophosphamide (11). Alexander recommends cyclophosphamide pulse therapy combined with a corticosteroid therapy for at least one year in the beginning (34). We applied 8-19 cycles of cyclophosphamide in our patients, and significant improvements were achieved. Randomized controlled studies are needed to assess the actual efficacy of these treatments for neuro-Sjögren syndrome.

Conclusions

In this study, we reported 11 patients with PSS, whose initial manifestations were neurological, and our conclusions from this series of patients are listed below;

1. CNS involvement was the major presenting form at a rate of 63.7% in this group of patients; PNS involvement was established in 36.4%. MS-like illnesses and optic neuritis were the most frequent forms of CNS involvements.

2. GBS was the top initial clinical diagnosis in patients with PNS involvements, unlike what is suggested by previous studies illustrating sensory ataxic neuropathy in cases with PSS. We can, thus, state that sensory ataxic neuropathy occurs in advanced PSS cases.

3. Differential diagnosis for PSS could be performed in cases with optic neuritis, MS, GBS and ischemic stroke. Complete laboratory testing, including SS (A&B) antibody studies, and ophthalmological and salivary gland evaluation may lead to more reliable diagnosis.

4. Suspicion of PSS should be accounted for when evaluating patients (particularly females) with unknown causes of neuropathy including MM. Additionally, patients with atypical neurological findings (either clinical or radiological) deserve this evaluation, and rheumatological consultation should be requested for such cases.

5. Multi-centered, randomized, prospective, carefully controlled trials with quantitative neurological and patient-centered outcome measures should be conducted in order to obtain therapeutic guidelines.

References

1. Youinou Y. Sjögren's syndrome: a quintessential B cell-induced autoimmune disease. *Joint Bone Spine* 2008; 75:1-2.
2. Binard A, Devauchelle-Pensec V, Fautrel B, Jousse S, Youinou P, Saraux A. Epidemiology of Sjogren's syndrome: Where are we now? *Clin Exp Rheumatol* 2007; 25:1-4.
3. Pillemer SR, Matteson EL, Jacobsson LT, Martens PB, Melton LJ 3rd, O'Fallon WM, Fox PC. Incidence of physician-diagnosed primary Sjogren syndrome in residents of Olmsted County, Minnesota. *Mayo Clin Proc.* 2001; 76:593-599.
4. Carsons S. Sjögren's Syndrome. In: Harris ED, Jr Budd RC, Firestein GS, Genovese MC, Sargent JS, Ruddy S, Sledge BC, editors. *Kelley's Textbook of Rheumatology*. 6th ed. Philadelphia, USA: WB Saunders Company; 2005; s. 1105-1124.
5. Ramos-Casals M, Font J. Primary Sjögren's syndrome: current and emergent aetiopathogenic concepts. *Rheumatology (Oxford)* 2005; 44:1354-1367.
6. Vitali C, Bombardieri S, Jonsson R, Moutsopoulos HM, Alexander EL, Carsons SE, Daniels TE, Fox PC, Fox RI, Kassan SS, Pillemer SR, Talal N, Weisman MH, European Study Group on Classification Criteria for Sjogren's Syndrome. Classification criteria for Sjogren's syndrome: a revised version of the European criteria proposed by the American-European Consensus Group. *Ann Rheum Dis.* 2002; 61:554-558.
7. HM. Moutsopoulos. Sjögren's Syndrome. In: Kasper DL, Fauci AS, Longo DL, Braunwald E, Hauser SL, Jameson JL, editors. *Harrison's Principles of Internal Medicine*. 16th ed. New York, USA: McGraw-Hill Medical Publishing Division; 2005; s. 1990-1993.
8. Fox RI. Sjögren's syndrome. *Lancet* 2005; 366:321-331.
9. Alexander EL, Malinow K, Lejewski JE, Jerdan MS, Provost TT, Alexander GE. Primary Sjogren's syndrome with central nervous system disease mimicking multiple sclerosis. *Ann Intern Med* 1986; 104:323-330.
10. Alexander EL. Central nervous system (CNS) manifestations of primary Sjogren's syndrome: an overview. *Scand J Rheumatol Suppl* 1986; 61:161-165.
11. Delalande S, de Seze J, Fauchais AL, Hachulla E, Stojkovic T, Ferriby D, Dubucquoi S, Pruvo JP, Vermersch P, Hatron PY. Neurologic manifestations in primary Sjögren's syndrome. A study of 82 patients. *Medicine (Baltimore)* 2004; 83:280-291.
12. Chai J, Logigian EL. Neurological manifestations of primary Sjogren's syndrome. *Curr Opin Neurol.* 2010; 23:509-513.

13. Créange A, Laplane D, Habib K, Attal N, Assuérus V. Dementia disclosing primary Gougerot-Sjogren syndrome. *Rev Neurol (Paris)* 1992; 148:376-380.
14. Gemignani F, Marbini A, Pavesi G, Di Vittorio S, Manganelli P, Cenacchi G, Mancina D. Peripheral neuropathy associated with primary Sjogren's syndrome. *J Neurol Neurosurg Psychiatry* 1994; 57:983-986.
15. Lafitte C, Amoura Z, Cacoub P, Pradat-Diehl P, Picq C, Salachas F, Léger JM, Piette JC, Delattre JY. Neurologic complications of primary Sjogren's syndrome. *J Neurol* 2001; 248:577-584.
16. Mellgren SI, Conn DL, Stevens JC, Dyck PJ. Peripheral neuropathy in primary Sjogren's syndrome. *Neurology* 1989;39:390-394.
17. Alexander EL, Provost TT, Stevens MB, Alexander GE. Neurologic complications of primary Sjogren's syndrome. *Medicine (Baltimore)* 1982; 61:247-257.
18. Massara A, Bonazza S, Castellino G, Caniatti L, Trotta F, Borrelli M, Feggi L, Govoni M. Central nervous system involvement in Sjogren's syndrome: unusual, but not unremarkable—clinical, serologic characteristic and outcomes in a large cohort of Italian patients. *Rheumatology (Oxford)* 2010; 49:1540-1549.
19. Ramos-Casals M, Tzioufas AG, Font J. Primary Sjogren's syndrome: new clinical and therapeutic concepts. *Ann Rheum Dis* 2005; 64:347-354.
20. Soliotis FC, Mavragani CP, Moutsopoulos HM. Central nervous system involvement in Sjogren's syndrome. *Ann Rheum Dis* 2004; 63:616-620.
21. Viñas Gaya J. [3 cases of rare peripheral neuropathies associated with primary Gougerot-Sjogren syndrome]. *Rev Neurol (Paris)* 1993; 149:481-484.
22. Govoni M, Padovan M, Rizzo N, Trotta F. CNS Involvement in Primary Sjogren's syndrome: Prevalence, Clinical Aspects, Diagnostic Assessment and Therapeutic Approach. *CNS Drugs* 2001; 15:597-607.
23. Morgen K, McFarland HF, Pillemer SR. Central nervous system disease in primary Sjogren syndrome: the role of magnetic resonance imaging. *Semin Arthritis Rheum* 2004; 34:623-630.
24. Rosenbaum R, Barkhuizen A. Primary Sjogren's syndrome. In: Noseworthy JH, editor. *Neurological Therapeutics: Principles and Practice*. 2nd ed. London, UK: Informa Healthcare; 2006; s. 1587-1591.
25. Bragoni M, Di Piero V, Priori R, Valesini G, Lenzi GL. Sjogren's syndrome presenting as ischemic stroke. *Stroke* 1994; 25:2276-2279.
26. Griffin JW, Cornblath DR, Alexander E, Campbell J, Low PA, Bird S, Feldman EL. Ataxic sensory neuropathy and dorsal root ganglionitis associated with Sjogren's syndrome. *Ann Neurol* 1990; 27:304-315.
27. Mori K, Iijima M, Koike H, Hattori N, Tanaka F, Watanabe H, Katsuno M, Fujita A, Aiba I, Ogata A, Saito T, Asakura K, Yoshida M, Hirayama M, Sobue G. The wide spectrum of clinical manifestations in Sjogren's Syndrome-associated neuropathy. *Brain* 2005; 128:2518-2534.
28. Molina JA, Benito-León J, Bermejo F, Jiménez-Jiménez FJ, Oliván J. Intravenous immunoglobulin therapy in sensory neuropathy associated with Sjogren's syndrome. *J Neurol Neurosurg Psychiatry* 1996; 60:699.
29. Takahashi Y, Takata T, Hoshino M, Sakurai M, Kanazawa I. Benefit of IVIG for long-standing ataxic sensory neuropathy with Sjogren's syndrome. *Neurology* 2003; 60:503-505.
30. Taguchi Y, Takashima S, Takata M, Dougu N, Asaoka E, Inoue H. High-dose intravenous immunoglobulin in the treatment of sensory ataxic neuropathy with Sjogren's syndrome: a case report. *No To Shinkei* 2004; 56:421-424.
31. Chen WH, Yeh JH, Chiu HC. Plasmapheresis in the treatment of ataxic sensory neuropathy associated with Sjogren's syndrome. *Eur Neurol* 2001; 45:270-274.
32. Asahina M, Kuwabara S, Asahina M, Nakajima M, Hattori T. D-penicillamine treatment for chronic sensory ataxic neuropathy associated with Sjogren's syndrome. *Neurology* 1998; 51:1451-1453.
33. Caroyer JM, Manto MU, Steinfeld SD. Severe sensory neuropathy responsive to infliximab in primary Sjogren's syndrome. *Neurology* 2002; 59:1113-1114.
34. Alexander EL. Central nervous system disease in Sjogren's syndrome. New insights into immunopathogenesis. *Rheum Dis Clin North Am* 1992; 18:637-672.