



LJMU Research Online

Bakker, EA, Hartman, YAW, Hopman, MTE, Hopkins, ND, Graves, LEF, Dunstan, DW, Healy, GN, Eijsvogels, TMH and Thijssen, DHJ

Validity and reliability of subjective methods to assess sedentary behaviour in adults: a systematic review and meta-analysis.

<http://researchonline.ljmu.ac.uk/id/eprint/13152/>

Article

Citation (please note it is advisable to refer to the publisher's version if you intend to cite from this work)

Bakker, EA, Hartman, YAW, Hopman, MTE, Hopkins, ND, Graves, LEF, Dunstan, DW, Healy, GN, Eijsvogels, TMH and Thijssen, DHJ (2020) Validity and reliability of subjective methods to assess sedentary behaviour in adults: a systematic review and meta-analysis. International Journal of

LJMU has developed **LJMU Research Online** for users to access the research output of the University more effectively. Copyright © and Moral Rights for the papers on this site are retained by the individual authors and/or other copyright owners. Users may download and/or print one copy of any article(s) in LJMU Research Online to facilitate their private study or for non-commercial research. You may not engage in further distribution of the material or use it for any profit-making activities or any commercial gain.

The version presented here may differ from the published version or from the version of the record. Please see the repository URL above for details on accessing the published version and note that access may require a subscription.

For more information please contact researchonline@ljmu.ac.uk


<http://researchonline.ljmu.ac.uk/>

REVIEW

Open Access



Validity and reliability of subjective methods to assess sedentary behaviour in adults: a systematic review and meta-analysis

Esmée A. Bakker^{1,2} , Yvonne A. W. Hartman¹, Maria T. E. Hopman¹, Nicola D. Hopkins², Lee E. F. Graves², David W. Dunstan^{3,4}, Genevieve N. Healy⁵, Thijs M. H. Eijssvogels¹ and Dick H. J. Thijssen^{1,2*}

Abstract

Background: Subjective measures of sedentary behaviour (SB) (i.e. questionnaires and diaries/logs) are widely implemented, and can be useful for capturing type and context of SBs. However, little is known about comparative validity and reliability. The aim of this systematic review and meta-analysis was to: 1) identify subjective methods to assess overall, domain- and behaviour-specific SB, and 2) examine the validity and reliability of these methods.

Methods: The databases MEDLINE, EMBASE and SPORTDiscus were searched up to March 2020. Inclusion criteria were: 1) assessment of SB, 2) evaluation of subjective measurement tools, 3) being performed in healthy adults, 4) manuscript written in English, and 5) paper was peer-reviewed. Data of validity and/or reliability measurements was extracted from included studies and a meta-analysis using random effects was performed to assess the pooled correlation coefficients of the validity.

Results: The systematic search resulted in 2423 hits. After excluding duplicates and screening on title and abstract, 82 studies were included with 75 self-reported measurement tools. There was wide variability in the measurement properties and quality of the studies. The criterion validity varied between poor-to-excellent (correlation coefficient [*R*] range - 0.01- 0.90) with logs/diaries (*R* = 0.63 [95%CI 0.48–0.78]) showing higher criterion validity compared to questionnaires (*R* = 0.35 [95%CI 0.32–0.39]). Furthermore, correlation coefficients of single- and multiple-item questionnaires were comparable (1-item *R* = 0.34; 2-to-9-items *R* = 0.35; ≥10-items *R* = 0.37). The reliability of SB measures was moderate-to-good, with the quality of these studies being mostly fair-to-good.

Conclusion: Logs and diaries are recommended to validly and reliably assess self-reported SB. However, due to time and resources constraints, 1-item questionnaires may be preferred to subjectively assess SB in large-scale observations when showing similar validity and reliability compared to longer questionnaires.

Registration number: CRD42018105994.

Keywords: Sedentary behaviour, Sitting, Measurement, Self-report, Reliability, Validity

* Correspondence: Dick.Thijssen@radboudumc.nl

¹Radboud Institute for Health Sciences, Department of Physiology, Radboud University Medical Center, P.O. Box 9101, 6500, HB, Nijmegen, The Netherlands

²Research Institute for Sport and Exercise Sciences, Liverpool John Moores University, Liverpool, UK

Full list of author information is available at the end of the article



© The Author(s). 2020 **Open Access** This article is licensed under a Creative Commons Attribution 4.0 International License, which permits use, sharing, adaptation, distribution and reproduction in any medium or format, as long as you give appropriate credit to the original author(s) and the source, provide a link to the Creative Commons licence, and indicate if changes were made. The images or other third party material in this article are included in the article's Creative Commons licence, unless indicated otherwise in a credit line to the material. If material is not included in the article's Creative Commons licence and your intended use is not permitted by statutory regulation or exceeds the permitted use, you will need to obtain permission directly from the copyright holder. To view a copy of this licence, visit <http://creativecommons.org/licenses/by/4.0/>. The Creative Commons Public Domain Dedication waiver (<http://creativecommons.org/publicdomain/zero/1.0/>) applies to the data made available in this article, unless otherwise stated in a credit line to the data.

Introduction

Regular physical activity reduces the risk of premature death, cardio- and cerebrovascular disease, metabolic disorders and some forms of cancer [1, 2]. Based on the overwhelming evidence, the World Health Organization recommend adults to perform ≥ 150 -min moderate-intensity aerobic physical activity, or ≥ 75 -min vigorous-intensity aerobic physical activity per week [3]. More recently, the importance of sedentary behaviour (SB) for health has emerged. High levels of SB are associated with an increased risk of premature death, cardiovascular disease, metabolic disorders and cancer [4–6], with especially strong associations in those who are physically inactive. These observations highlight the importance of accurately measuring physical activity *and* SB in order to understand their respective roles in health outcomes.

Various devices [7] and questionnaires [8] are available to assess physical activity. Since SB is a distinct behavioural entity and not simply reflective of the lack of sufficient physical activity, these measures may not directly assess SB [9]. Furthermore, in contrast with structured exercise, SB occurs habitually throughout the day, making valid assessment of SB challenging. SB is defined as any activity during awake time with an energy expenditure ≤ 1.5 METs (i.e. sitting or activities in reclining posture) [9, 10]. Patterns and total volume of SB can be assessed using objective measures such as thigh-worn accelerometers combining acceleration and posture, which is currently regarded as the gold standard to quantify free-living SB and to distinguish between sitting or lying, standing and physical activity [11]. Nonetheless, used in isolation, these objective measures do not distinguish between different domains (e.g. occupation, transportation and leisure time) and settings (e.g. TV viewing, car driving and sitting while reading) of SB. This is important since some settings of sitting, e.g. TV viewing and screen time, are more strongly associated with poor health outcomes compared to total sedentary time [12–14] and may serve as useful intervention targets. These observations emphasise the need for valid subjective measures to assess SB within the various domains and settings in which it occurs. Ideally, these measures should be taken in combination with objective assessments [15]. However, given this is not always possible or feasible, it is also important to understand the measurement metrics of self-report methods when they are used in isolation.

Several self-reported tools (i.e. questionnaires, logs and diaries) have been developed recently to measure SB. These tools vary from single-item questions to extensive questionnaires about SB considering various domains. Currently, some reviews compared the

validity and reliability of these tools [15, 16]. However, previous reviews did not take the risk of bias across studies into account and did not combine the results into a meta-analysis. Knowledge about the validity, reliability and the quality of the studies performed is essential to plan, perform and correctly interpret results in this field of research, because measurement error may seriously impact study results. The aim of this systematic review and meta-analysis was to identify subjective methods to assess SB and, subsequently, to examine their validity and reliability to assess SB in adults. Where the sedentary time measured by subjective methods was compared to objective and other subjective methods. This overview will contribute to improved selection of appropriate subjective measures of SB (in relation to their research question), and to identify gaps of knowledge within this area of research.

Methods

Date source and literature search

A literature search was performed in databases of MEDLINE, EMBASE and SPORTDiscus. The search strategy combined three main search terms: sedentary behaviour, self-reported measures, and validity/reproducibility. The complete search strategy is shown in the Additional Table 1. The last search was performed on March 11th, 2020. All citations were imported into the bibliographic database of EndNote, version X7 (Thomas Reuters, New York City, NY). This review was registered in PROSPERO (number [CRD42018105994](https://doi.org/10.1186/1745-2974-42018105994)) and the 'Preferred Reporting Items for Systematic Reviews and Meta-Analyses' (PRISMA) [98] guidelines were used to perform the systematic review and meta-analyses.

Selection of papers

After importing all citations in Endnote, duplicates were removed, and title, abstract and full text were independently screened by two reviewers (EB, YH). In case of disagreement, a third reviewer (TE) was consulted. Inclusion criteria were: 1) assessment of SB, 2) evaluation of subjective measurement tools, 3) being performed in healthy adults, 4) manuscript written in English, and 5) paper was peer-reviewed. Papers were excluded if the study did not aim to determine any construct of SB, when studies did not investigate the validation or reliability of the tool and/or the aim was to cross-cultural validate the subjective tool in different languages. A flowchart of the search strategy and the inclusion of manuscripts is presented in Fig. 1.

Data extraction, synthesis and analysis

Study characters were extracted using an extraction form including: 1) study population, 2) number of

Table 1 Description of measurement tools to determine sedentary behaviour

Name of tool (reference)	Specific tool (no. of questions) ^a	Construct Domain ^b	Distinction in days (wk/wknd; work days)	Recall period	Format ^c	Unit
1-item questionnaires						
EEPAQ ; Elderly EXERNET Physical Activity Questionnaire [17]	Q (1)	To	yes	1 wk	T	Hrs (cat)
GPAQ ; Global Physical Activity Questionnaire [18–24]	Q (1)	To	no	–	T	Hrs + min
IPAQ (short); International Physical Activity Questionnaire [25–27]	Q (1)	To	no	1 wk	T	Hrs + min
Modified MOSPA-Q ; MONICA Optional Study on Physical Activity Questionnaire [28]	Q (1)	W	no	–	T	Hrs + min
PPAQ ; Paffenbarger Physical Activity Questionnaire [29]	Q (1)	To	no	–	T	Hrs
SED-GIH [30]	Q (1)	To	no	–	T	Hrs (cat)
SQ ; Single Question [31–33]	Q (1)	To	no	–	T	Hrs + min
TASST ; TAxonomy of Self-report SB Tools [31, 34] 1) Single item total times; 2) Single item proportion; 3) TV time	Q (1: 1, 2: 1, 3: 1)	To	no	1 d 1 wk	T	Hrs + min %
T-SQ ; Total sitting questionnaire [35]	Q (1)	To	no	7 d	T	Hrs + min
TV-Q ; TV viewing [35]	Q (1)	To	no	–	T	Hrs + min
YPAS ; Yale Physical Activity Survey for Older Adults [36]	I (1)	To	no	–	T	Hrs
Clemes et al. 2012 [33]	Q (1)	To	yes	–	T	Hrs + min
Gao et al. 2017 (57) 1) Single item proportion (3 months) 2) Single item proportion (1 day)	Q (1: 1, 2: 1)	W	no	1: 1 d 2: 3 mo	T	%
Gupta et al. 2017 [37]	Q (1)	To	no	3 d	T	Hrs + min
2–9-item questionnaires						
AQuAA ; Activity Questionnaire for Adults and Adolescents [38]	Q (4)	L	no	1 wk	T	Hrs + min
Cancer Prevention Study-3 Sedentary Time Survey [39]	Q (4)	To + L	yes	1 yr	T	Hrs (cat)
CHAMPS ; Community Health Activities Model Program for Seniors [36, 40]	Q (9)	L + other	no	4 wk	T	Hrs (cat)
FPACQ ; Flemish Physical Activity Computerized Questionnaire [41, 42]	Q (3)	To + W + Tr	no	–	T	Hrs
IPAQ (long); International Physical Activity Questionnaire [26, 43–47]	Q (2)	To	no	1 wk	T	Hrs + min
OPAQ ; Occupational Physical Activity Questionnaire [48]	Q (2)	W	no	–	T	Hrs
OSPAQ ; Occupational Sitting and Physical Activity Questionnaire [28, 49–51]	Q (3)	W	no	1 wk	T	% of sitting
PAS2 ; Physical Activity Scale [52]	Q (2)	L + W	no	–	T	Hrs + min
PASBAQ ; Physical Activity and Sedentary Behavior Assessment Questionnaire [53]	Q (3)	L + W	no	4 wk	T	Hrs + min
PASB-Q ; Physical Activity and Sedentary Behavior Questionnaire [54]	Q (3)	L + W	no	–	T / Br	Hrs (cat) number
PAST-U ; Past-day Adults' Sedentary Time University [55]	Q (9)	L + Tr + W	no	1 d	T	Hrs + min
PAT Survey ; Physical Activity and Transit Survey [56]	Q (2)	To	no	1 wk	T	Hrs + min
RPAQ ; Recent Physical Activity Questionnaire [57, 58]	Q (4)	L + Tr	no	4 wk	T	Hrs (cat)
Regicor Short Physical Activity Questionnaire [59]	Q (4)	L	yes	–	T	Hrs
SCCS PAQ ; Southern Community Cohort Study Physical Activity Questionnaire [60]	Q (6)	L + Tr + W	no	–	T	Hrs + min
SITBRQ ; Workplace Sitting Breaks Questionnaire [61]	Q (2)	W	yes	–	Br	Freq + duration
Stand Up For Your Health Questionnaire [36, 62]	I (7)	L + Tr + W	no	1 wk	T	Hrs + min
STAQ ; Sedentary, Transportation and Activity Questionnaire [63]	Q (7)	L + Tr + W	yes	4 wk	T	Hrs + min (cat)
TASST ; TAxonomy of Self-report SB Tools [31] 4) Patterns; 5) Sum of domains	Q (4: 2, 5: 13)	H + L + Tr + W	no	1 d 1 wk	T / Bou	Hrs + min no. of bouts +

Table 1 Description of measurement tools to determine sedentary behaviour (Continued)

Name of tool (reference)	Specific tool (no. of questions) ^a	Construct Domain ^b	Distinction in days (wk/wknd; work days)	Recall period	Format ^c	Unit
						duration
Survey of older adults' sedentary time [64]	Q (8)	L + Tr + W	No	1 wk	T	Hrs + min
Web-based physical activity questionnaire Active-Q [65]	Q (8)	L + Tr + W	no	1 mo	T	Hrs + min (cat)
WSWQ ; Percentage-Method Improves Properties of Workers' Sitting- and Walking-Time Questionnaire [66]	Q (3/7)	L + W	yes	1 mo	T	Hrs + min %
Clark et al. 2011 [67]	Q (2)	W	yes	1 wk	T / Br	Hrs + min / freq
Jefferis et al. 2016 [68]	Q (4)	L + Tr	no	–	T	Hrs
Lagersted-Olsen et al. 2014 [69]	Q (4)	L + W	no	1 wk	T / Bou	Hrs + min
Mielke et al. 2020 [70]	Q (5)	L + Tr + W	no	1 wk	T	Hrs + min
Sudholx et al. 2012 [71]	Q (2)	W	no	1 wk	T / Br	Hrs + min / freq
Cartmel et al. 1992 [72] Questionnaire A / B	Q (2)	Qa: H, L Qb: To	Qa: no Qb: yes	Qa: 1 yr Qb: -	T	Hrs + min
≥10-item questionnaires						
ASBQ ; Adult Sedentary Behaviour Questionnaire [21]	Q (12)	L + Tr + W	yes	1 wk	T	Hrs + min
D-SQ ; Domain-Specific Questionnaire [35]	Q (10)	L + Tr + W	yes	7 d	T	Hrs + min
MPAQ ; Madras Physical Activity Questionnaire [73]	Q (19)	L + Tr + W	no	–	T	Hrs + min / freq
MSTQ ; Multicontext Sitting Time Questionnaire [74]	Q (14)	L + Tr + W	no	–	T	Hrs + min
PAFQ ; Physical Activity Frequency Questionnaire [75]	Q (140)	L + W	no	1 wk	T	Hrs + min
PAST-WEEK-U [76]	Q (63)	L + Tr + W	no	1 wk	T	Hrs + min
NIGHTLY-WEEK-U [76]	Q (63)	L + Tr + W	no	1 d	T	Hrs + min
SBQ ; Sedentary Behaviour Questionnaire [24, 43, 77]	Q (18)	L + Tr + W	yes	–	T	Hrs + min (cat)
SIT-Q ; Sedentary Behavior Questionnaire [78]	Q (20)	L + Tr + W	yes	1 yr	T / Br	Hrs + min (cat) / freq
SIT-Q-7d ; last 7-d sedentary behavior questionnaire [79, 80]	Q (20)	L + Tr + W	yes	1 wk	T / Br	Hrs + min (cat) / freq
STAR-Q [81]	Q (17)	H + L + Tr + W	no	4 wk	T	Hrs + min
TASST ; TAxonomy of Self-report SB Tools [31] [34] 6) Sum of behaviours	Q (13)	H + L + Tr + W	no	1 d 1 wk	T	Hrs + min
WSQ ; Workforce Sitting Questionnaire [50, 82, 83]	Q (10)	L + Tr + W	yes	1 wk	T	Hrs + min
Clark et al. 2015 [84]	Q (10)	L + Tr + W	yes	1 wk	T	Hrs + min
Clemes et al. 2012 [33]	Q (10)	L + Tr + W	yes	–	T	Hrs + min
Ishii et al. 2018 [85]	Q (12)	L + Tr + W	Yes	1 wk	T	Hrs + min (cat)
Marshall et al. 2012 [86]	Q (10)	L + Tr + W	yes	–	T	Hrs + min
Van Cauwenberg et al. 2017 [87]	Q (12)	L + Tr	no	1 wk	T	Hrs + min
Visser et al. 2010 [88]	Q (20)	L + Tr + W	no	–	T	Hrs + min
Logs and diaries						
7-day SLIPA Log ; (7-day Sedentary and Light Intensity Physical Activity Log) [89]	L	L + Tr + W	yes	1 d	T	Hrs + min
BAR ; Bouchard Activity Record [90]	D	To	no	–	T	Hrs + min
BeWell24 Self-Monitoring App [91]	D	L + Tr + W	no	1 d	T	Hrs + min
cpar24 ; Computer-Based 24-Hour Physical Activity Recall Instrument [92]	D	L + Tr + W	no	1 d	T	Hrs + min

Table 1 Description of measurement tools to determine sedentary behaviour (Continued)

Name of tool (reference)	Specific tool (no. of questions) ^a	Construct Domain ^b	Distinction in days (wk/wknd; work days)	Recall period	Format ^c	Unit
EMA ; Ecological Momentary Assessment [93]	D	To	no	1 d	T	Hrs + min (cat)
MARCA ; Multimedia Activity Recall for Children and Adults [32, 94]	I	L + Tr + W	no	1 d	T	Hrs + min
PAMS ; Physical Activity Measurement Survey [95]	I	L + Tr + W	no	1 d	T	Hrs + min
PDR ; Previous Day Recall [45]	I	L + Tr + W	no	1 d	T	Hrs + min
Time Use Survey [96]	D	L + Tr + W	no	1 d	T	Hrs + min
Updated PDR ; Updated Previous Day Recall [97]	I	L + Tr + W	no	1 d	T	Hrs + min

^aQ = questionnaire; L = log; D = diary; I = interview

^bTo = Total; H=Household; L = Leisure; Tr = Transport; W=Work

^cT = Total time; Br = breaks; Bou = bouts

participants, 3) gender and age, 4) the construct of SB measured (domain, setting, recall period, number of questions), 5) measurement outcomes (e.g. total sedentary time, breaks in sitting time, bouts), 6) comparison measure when validity was assessed, 7) interval between first and second measure when reliability was assessed, and 8) results of the measurement properties (e.g. intra correlation coefficients [ICC], correlations, mean bias with limits of agreement, kappa values and sensitivity/specificity). The extraction form was created by one (EB) and piloted by both reviewers (EB, YH). The pilot was performed using 10 randomly selected studies and changes were made to improve the extraction form. The quality of the studies was determined using the checklist with 4-point scale of COSMIN (Consensus-based Standards for the selection of health Measurement Instruments) criteria [99–101]. The COSMIN checklist contained items about the criterion validity (Additional Table 2) and reliability (Additional Table 3). For each item different design requirements and statistical methods were rated on quality using a 4-point scale. A methodological quality score per item was obtained by taking the lowest rating of any score per item ('worse score counts') [101].

Assessment of construct validity and reliability

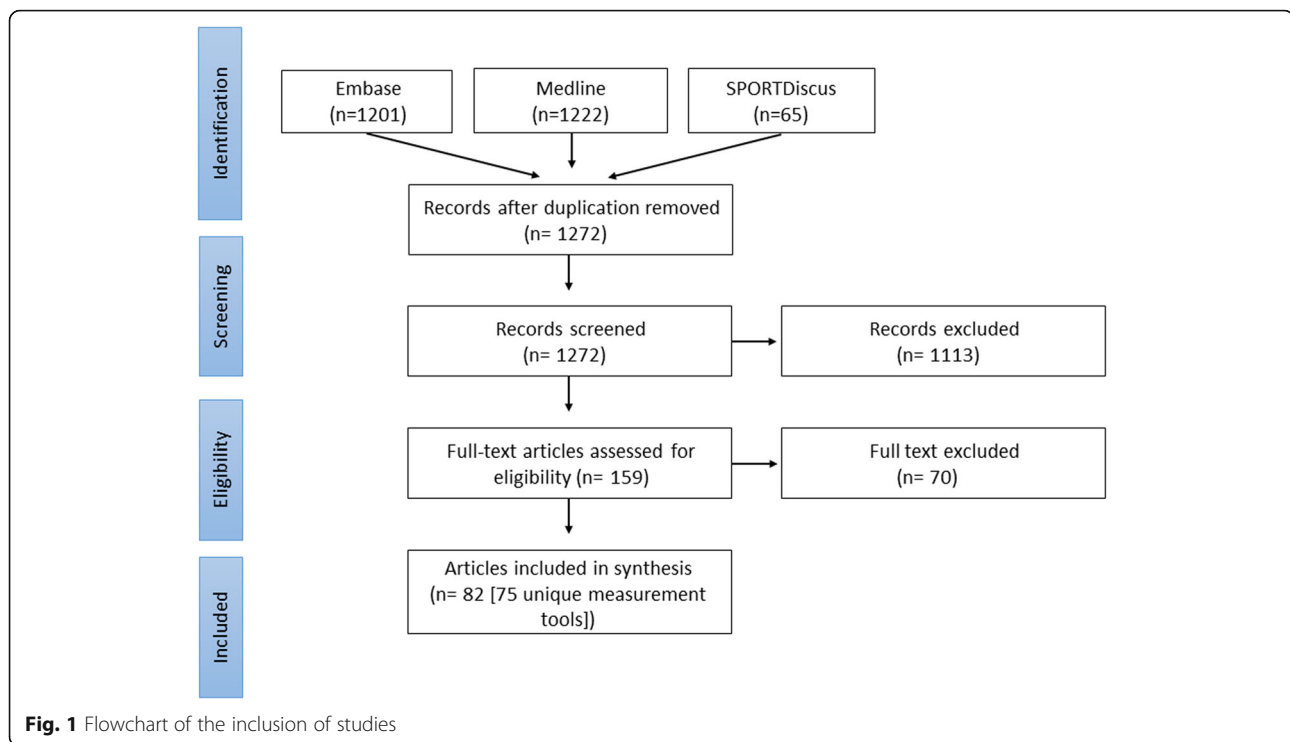
Criterion validity was defined as the degree to which the outcome measure measures the construct it purposes to measure [103]. Thigh-worn accelerometry (e.g. activPAL) was considered as the gold standard for total sedentary time, as they can more accurately distinguish between sitting and standing [11]. Hip-, waist- and wrist-worn accelerometers are frequently used as criterion measure. However, these accelerometers are not sensitive enough to distinguish between stationary standing and sitting [104]. On these grounds, studies using only hip-, waist- and wrist-worn accelerometers as criterion measure were graded with a lower level of evidence. In addition, if validity

results of both thigh-worn accelerometers or hip-, waist- and wrist-worn accelerometers were included in the study, only the results of the thigh-worn accelerometers were reported in this review.

Reliability was defined as the degree of consistency and reproducibility of a measurement tool. Test-retest reliability is often assessed using an ICC [103]. Since Pearson and Spearman correlation coefficients neglect systematic errors, the use of Pearson and Spearman correlation coefficient was considered as inadequate and these studies were graded with a lower level of evidence. In addition, if studies provided both ICCs and correlation coefficients, only ICCs were reported in this review. An ICC > 0.90 was considered as excellent, ICC between 0.75–0.90 was considered as good, ICC between 0.50–0.75 as moderate and > 0.50 as poor [105].

Data analyses

A meta-analysis using random effects [106] was performed to assess the pooled validity of the 1-item questionnaires, 2 to 9-item questionnaires, ≥10-item questionnaires and logs/diaries. A random effect model was used because it was unlikely that included studies were functional equivalent and results of the included studies had a large heterogeneity. Only studies expressing validity as Pearson or Spearman correlation coefficients were included in this analysis. When no correlation coefficient was provided for total sedentary time, an (unweighted) mean was calculated based on correlation coefficients of all setting and domains. Finally, I^2 was calculated, which describes the proportion of total variation in effect size that was due to systematic differences between effect sizes rather than by chance [106]. Stratified analyses including only studies examining questionnaires with a good-to-excellent quality were performed to investigate if the quality of the study affected the pooled validity. Meta-analyses were performed using R with



‘Meta-Analysis with Correlations’ (MAc) package, version 1.1.1.

Results

Search results

The literature search resulted in 2423 hits (Fig. 1). After excluding duplicates, 1272 studies were screened for title and abstract. Most papers were not eligible for this review because: *i.* the articles did not aim to determine SB, *ii.* no measurement properties were assessed, and/or *iii.* The study was performed in children or diseased populations. In total 82 studies and 75 self-reported measurement tools were included (Table 1).

Attributes of the questionnaires, logs and diaries

The majority of the subjective measures were questionnaires and contained different domains and settings of SB (Table 2). Measurement tools differed regarding the timing (week vs weekend), recall period and number of questions. Nearly all self-reported measurement tools expressed SB in total sitting time (hrs/day or hrs/week). The PASB-Q, SITBRQ, SIT-Q, SIT-Q-7d, TASST and several other questionnaires [31, 54, 61, 67, 69, 71, 78, 79] included total sitting time, but also information about sitting bout duration or breaks in sitting time.

Validity

A total of 80 studies examined the validity of one or more methods to assess SB, resulting in a comparison

of 96 unique methods (Table 2). Of the 96 results, 5 were ranked with an excellent quality of the study, 7 studies with a good quality, 9 with a fair quality and 75 with a poor quality. The most important shortcoming of the validation studies was the use of an accelerometer ($n = 62$) to examine criterion validity of the method to assess SB. A total of 29 studies used the gold standard approach (thigh-worn accelerometer), three studies used diaries/logs and one used direct observation to assess construct validity. Most studies calculated correlation coefficients between the criterion measure and the self-reported questionnaire, which ranged between -0.01 to 0.90 for total sedentary time and ranged between 0.02 to 0.39 for number of sedentary bouts or breaks (Table 3). Other studies used ICCs ($N = 8$), kappa values ($N = 2$), and sensitivity and specificity outcomes ($N = 1$) to determine the validity, and some added Bland-Altman plots with a mean difference and limits of agreement to examine the accuracy of the method to assess SB ($N = 48$). Figure 2a provides an overview of the correlation coefficient of all individual studies combined with the quality of the study.

Meta-analyses

The correlation coefficients of logs and diaries (correlation coefficient estimate [R] = 0.63 [95% CI 0.48 – 0.78], I^2 : 95%) were substantially higher than the coefficients of the questionnaires ($R = 0.35$ [95% CI 0.32 – 0.39], I^2 :

Table 2 Construct validity of subjective sedentary behaviour measurement tools

Subjective tool	Study population		Validity		Correlation (95%CI)	Other results	Quality of study
	N	gender male; mean age [SD] or age range; nationality	Comparison measure				
1-item questionnaires							
EEPAQ: Elderly EXERNET Physical Activity Questionnaire [17] Lopez-Rodriguez et al. 2017	73	15%; 71.96 (5.48) yr; ESP	Actigraph GT1 M		0.574 P < 0.01		Poor
GPAQ: Global Physical Activity Questionnaire [21] Chu et al. 2018	78	31%; 20–65 yr; SGP	Actigraph GT3X-BL		Self-administered: 0.46 (0.18; 0.68) Interview administered: 0.12 (– 0.11; 0.33)	MD – 175.8 min (LoA – 556.1; 206.5) <i>More details are provided in study</i>	Poor
GPAQ: Global Physical Activity Questionnaire [20] Cleland et al. 2014	65	54%; 44 (14) yr; GBR	Actigraph GT3X		0.187 P = 0.135	MD – 348.7 min (LoA – 721.1; 23.7)	Poor
GPAQ: Global Physical Activity Questionnaire [24] Kastelic et al. 2019	42	88%; M: 38 (8) yr F: 50 (7) yr; SVN	ActivPAL 3		0.317 P = 0.041	MD – 165 min (LoA – 429; 99)	Fair
GPAQ: Global Physical Activity Questionnaire [18] Laeremans et al. 2017	122	45%; 35 (10) yr; BEL, ESP, GBR	Sensewear armband		Mid-season: 0.09 P > 0.05 Summer: 0.25 P < 0.01 Winter: 0.24 P < 0.01	MD 8 min (LoA – 75; 92)	Poor
GPAQ: Global Physical Activity Questionnaire [22] Metcalfe et al. 2018	108	31%; 49.4 yr (range: 19.8–68.7); USA	ActiGraph GT9X		0.19		Poor
GPAQ: Global Physical Activity Questionnaire [23] Rudolf et al. 2020	54	43%; 28.3 (12.2) yr; DEU	ActiGraph GT3X+		GPAQ with illustration of exemplary physical activities: 0.32 P = 0.02 GPAQ without illustration: 0.29 P = 0.03	GPAQ with illustration: – 9.3 min/day (LoA – 322.1; 303.5) GPAQ without illustration: – 18.3 min/day (LoA – 313.7; 277.1)	Poor
GPAQ: Global Physical Activity Questionnaire [19] Wanner et al. 2017	366	49%; 47.0 (15) yr; CHE	Actigraph GT3X+		0.47 P ≤ 0.001		Poor
IPAQ (short); International Physical Activity Questionnaire [26] Craig et al. 2003	2721	25–73%; 18–65 yr; 12 countries	Accelerometer (CSA model 7164)		Range: 0.07–0.61		Poor
IPAQ (short); International Physical Activity Questionnaire [43] Prince et al. 2018	313	0%; 42.8 (11.9) yr; CAN	ActiGraph GT3X		0.31 (P < 0.001)	IPAQ: MD 451.9–0.826* min	Poor
IPAQ (short); International Physical Activity Questionnaire [44] Rosenberg et al. 2008	289	45%; 35.9 (11.3) yr; GBR, USA, NLD	Accelerometer (CSA model 7164)		0.34		Poor
Modified MOSPA-Q: MONICA Optional Study on Physical Activity Questionnaire [28]	70	40%; 19–60+ yr; AUS	ActiGraph GT1M		0.52 P < 0.01		Poor

Table 2 Construct validity of subjective sedentary behaviour measurement tools (Continued)

Subjective tool	Study population		Validity		Correlation (95%CI)	Other results	Quality of study
	N	gender male; mean age [SD] or age range; nationality	Comparison measure	Comparison measure			
Chau et al. 2012 PPAQ ; Paffenbarger Physical Activity Questionnaire [29] Simpson et al. 2015	419	49%; M: 43.8 (15.8) yr F: 44.3 (16.5) yr; USA	Actical	Actical	0.20 (0.14; 0.33)		Poor
SED-GIH [30] Larsson et al. 2018	284	33%; 42.9 (8.9) yr; SWE	ActivPAL	ActivPAL	0.31 (95% CI 0.20–0.41), P < 0.001		Excellent
SQ ; Single Question [32] Aguilar-Farías et al. 2015	37	34%; 74.5 (7.6) yr; AUS	ActivPAL 3	ActivPAL 3	0.33; wk. 0.31; wknd 0.28		Fair
SQ ; Single Question [33] Clermes et al. 2012	44	30%; 41.5 (12.8) yr; GBR	ActiGraph GT1M	ActiGraph GT1M	wk: 0.70 (P < 0.001) wknd: 0.55 (P < 0.001)	ICC wk.: 0.82 (P < 0.001) wknd: 0.69 (P < 0.001)	Poor
TASST ; Taxonomy of Self-report SB Tools [31] 1) Single item total times; 2) Single item proportion; 3) TV time Chastin et al. 2018	700	48%; 64–83 yr; GBR	ActivPal	ActivPal	Previous day 1) 0.20; 2) 0.28; 3) 0.24 Previous wk 1) 0.23; 2) 0.36; 3) 0.23 Unanchored 1) 0.20; 2) 0.32; 3) 0.26 All P-values < 0.001	Previous day 1) LoA – 147; 561 2) LoA – 22; 48 3) LoA 145; 733 Previous wk 1) LoA; – 150; 564 2) LoA; – 19; 43 3) LoA 81; 732 Unanchored 1) LoA – 135; 549 2) LoA – 19; 51 3) LoA 125; 705	Excellent
T-SQ ; Total sitting questionnaire [35] Kozey-Keadle et al. 2012	13	75%; 46.5 (10.8) yr; USA	ActivPal	ActivPal	wk 0.41; wknd 0.55	Wk MD 40.5 min (– 125.2; 22.3) Wknd MD 147.4 min (– 228.3; – 66.6)	Poor
TV-Q ; TV viewing [35] Kozey-Keadle et al. 2012	13	75%; 46.5 (10.8); USA	ActivPal	ActivPal	wk: 0.07; wknd: – 0.11		Poor
YPAS ; Yale Physical Activity Survey for Older Adults [36] Gennuso et al. 2015	58	21% 75.1 (6.5) yr; USA	ActiGraph GT1M	ActiGraph GT1M		kappa – 0.0003, (– 0.0025; 0.0019)	Poor
Gao et al. 2017 [102]	70	41.4%; 33.1 (10.7) yr; CHI, FIN	Thigh-mounted accelerometer	Thigh-mounted accelerometer	3 months: 0.53 (95% CI 0.34–0.68), P < 0.001 Previous day: 0.53 (95% CI 0.45–0.61) P < 0.001	3 months: MD 2.4% (LoA – 0.5%; 5.3%) Previous day: MD 2.2% (LoA 0.7%; 3.6%)	Poor

Table 2 Construct validity of subjective sedentary behaviour measurement tools (Continued)

Subjective tool	Study population		Validity		Correlation (95%CI)	Other results	Quality of study
	N	gender male; mean age [SD] or age range; nationality	Comparison measure	Comparison measure			
Gupta et al. 2017 [37]	183	60%; 44.9 (9.8) yr; DNK	Actigraph GT3X	Actigraph GT3X	0.32 P < 0.001	MD 204.1 min (LoA 112.4–0.6*min; 463.6+ 0.6*min)	Poor
2–9-item questionnaires							
AQuAA ; Activity Questionnaire for Adults and Adolescents [38] Chinapaw et al. 2009	47	36%; 30.1 (3.6) yr; NLD	Actigraph model 7164	Actigraph model 7164		ICC 0.15	Poor
Cancer Prevention Study-3 Sedentary Time Survey [39] Rees-Punia et al. 2018	713	41%; 51.7 yr (range 31–72); USA	Actigraph GT3x accelerometer + diary	Actigraph GT3x accelerometer + diary	0.41 (0.35; 0.47)		Poor
CHAMPS ; Community Health Activities Model Program for Seniors [40] Hekler et al. 2012	870	43%; 66–80+ yr; USA	Actigraph model 7164 and 71,256	Actigraph model 7164 and 71,256	0.12 P < 0.001	MD – 2841.6 min (LoA – 4476.7; – 1206.5)	Poor
CHAMPS ; Community Health Activities Model Program for Seniors [36] Gennuso et al. 2017	58	21%; 75.1 (6.5) yr; USA	ActiGraph GT1M	ActiGraph GT1M	0.14 P = 0.28	CHAMPS; MD – 5.21 hrs (LoA – 2.2; – 8.3)	Poor
FPACQ ; Flemish Physical Activity Computerized Questionnaire [41] Matton et al. 2007	81	77%; 22–78 yr; BEL	RT3 Triaxial Research Tracker + activity record	RT3 Triaxial Research Tracker + activity record	Employed / unemployed Eat: M 0.53 (P < 0.01); F 0.56 (P < 0.01) Sleep M 0.69 (P < 0.001); F 0.60 (P < 0.001) Tv M 0.69 (P < 0.001); F 0.83 (P < 0.001) Retired Eat M 0.33; F 0.15 Sleep M 0.57 (P < 0.01); F 0.51 (P < 0.05) Tv M 0.78 (P < 0.001); F 0.80 (P < 0.001)		Poor
FPACQ ; Flemish Physical Activity Computerized Questionnaire [42] Scheers et al. 2012	405	41.4 (9.8) yr; BEL	SenseWear + electronic activity diary	SenseWear + electronic activity diary	Total sedentary time 0.54 (P < 0.001) Screen time 0.57 (P = 0.648) Motorized transport 0.58 (P < 0.001)		Poor
IPAQ (long); International Physical Activity Questionnaire [27] Chastin et al. 2014	69	67%; 41.1 (9.0) yr; GBR	ActivPal	ActivPal	0.159 (P = 0.193)	ICC 0.149	Good
IPAQ (long); International Physical Activity Questionnaire [82] Chau et al. 2011	95	37%; 18–60+ yr; AUS	Actigraph GT1M	Actigraph GT1M	Wk: 0.47 Wknd: 0.31 Total: 0.46		Poor
IPAQ (long); International Physical Activity Questionnaire [46]	228	57%; 71.8 (6.6) yr;	Actigraph GT3X+	Actigraph GT3X+	Wk: 0.70 (P < 0.01) Wknd: 0.26	Wk: MD – 168.6 min (LoA – 451.8; 114.6)	Poor

Table 2 Construct validity of subjective sedentary behaviour measurement tools (Continued)

Subjective tool	Study population		Validity		Correlation (95%CI)	Other results	Quality of study
	N	gender male; mean age [SD] or age range; nationality	Comparison measure	Comparison measure			
Cleland et al. 2018		GBR				Wknd d: MD – 173.9 min (LoA – 441.6; 93.8)	
IPAQ (long); International Physical Activity Questionnaire [26] Craig et al. 2003	2721	25–73%; 18–65 yr; 12 countries	Accelerometer (CSA model 7164)	Accelerometer (CSA model 7164)	Range: 0.14–0.51		Poor
IPAQ (long); International Physical Activity Questionnaire [44] Rosenberg et al. 2008	289	45%; 35.9 (11.3) yr; GBR, USA, NLD	Accelerometer (CSA model 7164)	Accelerometer (CSA model 7164)	0.33		Poor
IPAQ (long); International Physical Activity Questionnaire [47] Ryan et al. 2018	86	48%; 73.7 (6.3) yr; GBR	GENEA; (GENEActiv Original)	GENEA; (GENEActiv Original)	0.29	MD 27.6 (LoA ± 26.5 hrs/week)	Poor
IPAQ (long); International Physical Activity Questionnaire [25] Wanner et al. 2016	346	45%; 54.6 yr; CHE	Actigraph GT3X	Actigraph GT3X	0.42 P ≤ 0.001	MD 26.4 min (LoA – 1.2.0; 64.9)	Poor
OPAQ ; Occupational Physical Activity Questionnaire [48] Reis et al. 2005	41	32%; 38.8 (9.9) yr; USA	Physical activity record	Physical activity record	0.37		Poor
OSPAQ ; Occupational Sitting and Physical Activity Questionnaire [28] Chau et al. 2012	76	40%; 19–60+ yr; AUS	ActiGraph GT1M	ActiGraph GT1M	0.65 P < 0.01	MD 22 min (LoA – 141.53; 185.18)	Poor
OSPAQ ; Occupational Sitting and Physical Activity Questionnaire [51] Jancey et al. 2014	41	41%; 18–50+ yr; AUS	ActiGraph GT3X + on the waist or thigh	ActiGraph GT3X + on the waist or thigh	0.58 (0.33; 0.75)	MD – 25.4 min (LoA – 784.7; 733.9)	Poor
OSPAQ ; Occupational Sitting and Physical Activity Questionnaire [49] Pedersen et al. 2016	34	25%; 45.62 (10.96) yr; AUS	ActivPal	ActivPal	0.90	MD 3.16% (LoA – 21.4%; 15.1%)	Poor
OSPAQ ; Occupational Sitting and Physical Activity Questionnaire [50] van Nassau et al. 2015	42	14%; 38 (11) yr; AUS	ActivPAL	ActivPAL	Day 1: 0.37 (P < 0.05) Day 2: 0.48 (P < 0.05) Day 3: 0.35 (P < 0.05)	only figures available for MD and LoA	Fair
PAS2 ; Physical Activity Scale [52] Pedersen et al. 2017	330	38%; 46.7 (8.5) yr; DNK	Actiheart	Actiheart	0.197 (P = 0.053)	MD – 2.3 hrs (LoA – 9.04; 4.34)	Poor
PASBAQ ; Physical Activity and Sedentary Behaviour Assessment Questionnaire [53] Scholes et al. 2014	2175	46%; M: 52.7 (17.7) yr F: 51.8 (17.8) yr; GBR	ActiGraph GT1M	ActiGraph GT1M	Sedentary time for different cut-off points M < 50 cpm 0.25 (0.19; 0.31); < 100 cpm 0.25 (0.19; 0.30); < 200 cpm 0.23 (0.17; 0.29) F		Poor

Table 2 Construct validity of subjective sedentary behaviour measurement tools (Continued)

Subjective tool	Study population		Validity		Correlation (95%CI)	Other results	Quality of study
	N	gender male; mean age [SD] or age range; nationality	Comparison measure	Comparison measure			
PASB-Q: Physical Activity and Sedentary Behavior Questionnaire [54] Fowles et al. 2017	32	19%; M: 63 (9) yr F: 55 (10) yr; USA	ActiGraph® GT3X		< 50 cpm 0.31 (0.25; 0.37); < 100 cpm 0.30 (0.24; 0.35); < 200 cpm 0.27 (0.21; 0.32) Total SB: 0.29 P = 0.13 Breaks: 0.02 P > 0.05		Poor
PAST-U: Past-day Adults' Sedentary Time University [55] Clark et al. 2016	57	53%; 26 (IQR 23; 31) yr; AUS	ActivPAL		0.63 (0.44; 0.76)	ICC 0.64 (0.45; 0.77) MD 0.08 hrs (LoA - 3.9; 4.1)	Good
PAT Survey: Physical Activity and Transit Survey [56] Yi et al. 2015	667	39%; 18-65+ yr; USA	ActiGraph GT3X		0.32 P < 0.001	MD: 49 min (LoA - 441; 343)	Poor
RPAQ: Recent Physical Activity Questionnaire [58] Besson et al. 2010	50	50%; F 34.3 (8.8) yr M 35.2 (9.9) yr; GBR	Doubly labeled water and accelerometer with heart rate		0.27 (P = 0.06)	0.7 hrs (LoA 6 2.8)	Poor
RPAQ: Recent Physical Activity Questionnaire [57] Golubic et al. 2014	1923	30%; F: 540 (9.3) yr; M: 55.0 (9.9) yr; EUR	Actiheart		F: 0.20 (0.14; 0.25) M: 0.25 (0.19; 0.31)	F: MD - 3.3 hrs (LoA - 9.0; 4.1) M: MD - 2.3 hrs (LoA - 8.3; 5.5) Total MD - 3.1 hrs (LoA - 9.6; 4.9)	Poor
Regior Short Physical Activity Questionnaire [59] Molina et al. 2017	114	45%; 54.5 (12.1) yr; ESP	SenseWear Pro3 Armband		0.244 (P = 0.020)		Poor
SCCS PAQ: Southern Community Cohort Study Physical Activity Questionnaire [60] Buchowski et al. 2012	118	48%; 54.5 (8.4) yr; USA	RT3 Stayhealthy		Range 0.17-0.30		Poor
SITBRQ: Workplace Sitting Breaks Questionnaire [61] Pedisic et al. 2014	143	37%; 18-60+ yr; AUS	Actigraph GT1M		Freq: 0.24 (0.07; 0.40) Duration: 0.05 (-0.12; 0.22)		Poor
Stand Up For Your Health Questionnaire [62] Gardiner et al. 2011	48	27%; 72.8 (8.1) yr; AUS	ActiGraph GT1M		0.30 (0.02; 0.54)	MD - 9.20 + 0.67 hrs (LoA ± 3.82)	Poor
STAQ: Sedentary, Transportation and Activity Questionnaire [63] Mensah et al. 2016	88	47%; 40.5 (14.3) yr; FRA	Actigraph GT3X+ + Log		Total 0.54 (P < 0.001) Work 0.88 (P < 0.001) Transport 0.35 (P = 0.001) Leisure time 0.19 (P = 0.09)	Total ICC 0.44 (0.25; 0.60)	Poor

Table 2 Construct validity of subjective sedentary behaviour measurement tools (Continued)

Subjective tool	Study population		Validity		Correlation (95%CI)	Other results	Quality of study
	N	gender male; mean age [SD] or age range; nationality	Comparison measure	Comparison measure			
TASST ; Taxonomy of Self-report SB Tools [31] 4) Sum of domains; 5) Patterns Chastin et al. 2018	700	48%; 64–83 yr; GBR	ActivPAL	TV/DVD 0.46 (P < 0.001) Computer/tablet/video game 0.42 (P < 0.001)	Previous day 4) LoA – 273; 533 5) LoA – 472; 748 Previous wk 4) 0.30; 5) 0.23 Unanchored 4) 0.16; 5) 0.02 All P-values < 0.001	Excellent	
Survey of older adults' sedentary time [64] Gennuso et al. 2016	44	36%; 70 (68–76) yr; USA	ActivPAL	0.06 (P = 0.72)	MD 0.31 hrs (LoA – 6.74; 7.37)	Fair	
Web-based physical activity questionnaire Active-Q [65] Bonn et al. 2015	148	100%; 65.4 (8.7) yr; SWE	GENEA Accelerometer	0.19 (0.04; 0.34)	MD – 178 min (LoA – 606,25)	Poor	
WSWQ ; Percentage-Method Improves Properties of Workers' Sitting- and Walking-Time Questionnaire [66] Matsoe et al. 2016	62	58%; F 35.8 (7.5) yr M 46.3 (8.0) yr; JPN	ActivPAL	Time method At work: 0.56 Work day, not at work: 0.51 Non-workday: 0.37 Percentage method At work: 0.65 Work day, not at work: 0.60 Non-workday: 0.53 All P < 0.05	Time method At work: MD –7 min (LoA – 241; 241) Non-workday: MD – 115 min (LoA – 588; 358) Percentage method At work: MD 35 min (LoA – 200; 269) Non-workday: MD – 56 min (LoA – 392; 281)	Good	
Cartmel et al. 1992 [72] Questionnaire A Questionnaire B	24	38%; M 69 (66–80) yr; F 74 (59–83) yr; USA	Diary		Time difference Qa 230 min P < 0.001 Qb 40 min, P = 0.47	Poor	
Clark et al. 2011 [67]	121	40%; Median 34.9 (28.5–46.0) yr; AUS	Accelerometer	Sedentary time 0.39 (0.22; 0.53) Sedentary breaks 0.26 (0.11; 0.44)	Sedentary time MD –2.75 + 0.47* hrs (LoA ±2.25)	Poor	
Ishii et al. 2018 [85]	392	39.8%; 50.1 (7) yr; JPN	Active style Pro, HIA-350IT	Total 0.49, P < 0.001 Workdays 0.57, P < 0.001 Non-workdays 0.23, P < 0.001	Total MD – 134 min/d (LoA – 361.9; 335.2) Workdays MD – 0.4 min/d (LoA – 378.9; 378.1) Non-workdays MD – 49.2 min/d (LoA – 477.7; 379.2)	Poor	

Table 2 Construct validity of subjective sedentary behaviour measurement tools (Continued)

Subjective tool	Study population		Validity		Correlation (95%CI)	Other results	Quality of study
	N	gender male; mean age [SD] or age range; nationality	Comparison measure	Comparison measure			
Jefferis et al. 2016 [68]	1377	100%; 79 (71–93) yr; GBR	ActiGraph GT3X+	ActiGraph GT3X+	0.17 P < 0.001	MD 300 min (LoA – 6; 607)	Poor
Lagersted-Olsen et al. 2014 [69]	26	53%; 40.9 (8.6) yr; DNK	ActiGraph GT3X+ + diary	ActiGraph GT3X+ + diary	Work: Total 0.081 (P = 0.699) Uninterrupted sitting 0.315 (P = 0.126) Leisure time at workday: Total – 0.185 (P = 0.366) Uninterrupted sitting – 0.069 (P = 0.762) Leisure day: Total 0.100 (P = 0.626) Uninterrupted sitting 0.063 (P = 0.770)	Work: MD 0.0 (LoA – 3.4; 3.4) Leisure: MD 2.4 (LoA – 7.8; 3.0) Uninterrupted sitting: MD 0.5 (LoA – 1.1; 2.1)	Poor
Sudholz et al. 2017 [71]	52	58%; 32.1 (9.9) yr; AUS	ActivPal	ActivPal	Sitting time 0.24 (– 1.0; 0.47) Breaks 0.39 (0.25; 0.74)		Good
≥10-item questionnaires							
ASBQ ; Adult Sedentary Behaviour Questionnaire [21] Chu et al. 2018	78	31%; 20–65 yr; SGP	Actigraph GT3X-BL	Actigraph GT3X-BL	Self-administered: 0.31 (– 0.02; 0.58) Interview administered: – 0.07 (– 0.37; 0.24)	MD 4.6 min/d (LoA – 431.2; 440.4) More details see full study	Poor
D-SQ ; Domain-Specific Questionnaire [35] Kozey-Keadle et al. 2012	20	75%; 46.5 (10.8) yr; USA	ActivPal	ActivPal	wk 0.30; wknd 0.17	Wk 176 min (96.1; 256.9) Wknd 157.6 min (22.1; 293.0)	Poor
MPAQ ; Madras Physical Activity Questionnaire [73] Anjana et al. 2015	520	53%; 44.4 (14.2) yr; IND	GT3X+ Triaxial	GT3X+ Triaxial	0.48 (0.32; 0.62)		Poor
MSTQ ; Multicontext Sitting Time Questionnaire [74] Whitfield et al. 2013	25	44%; 34.5 (7.7) yr; USA	ActiGraph GT1M	ActiGraph GT1M	Work 0.34 P = 0.13 Non-working 0.61 P = 0.01		Poor
PAFQ ; Physical Activity Frequency Questionnaire [75] Verhoog et al. 2019	1752	49%; 60.5 (9.4) yr; CHE	GENEActive	GENEActive	Total minutes 0.37 (0.33; 0.41) Total % of time 0.39 (0.35; 0.43)	No exact numbers available for MD and LoA, figure only	Poor
PAST-WEEK-U [76] Moulin et al. 2019	25	12%; ≤ 19 yr: 64% 20–24 yr: 36%; CAN	ActivPAL4	ActivPAL4		MD 0.09 hrs/day (LoA – 5.38; 5.55)	Poor
NIGHTLY-WEEK-U [76] Moulin et al. 2019	23	4%; ≤ 19 yr: 48%;	ActivPAL4	ActivPAL4		MD 0.21 hrs/day (LoA – 1.75; 2.17)	Poor

Table 2 Construct validity of subjective sedentary behaviour measurement tools (Continued)

Subjective tool	Study population		Validity		Correlation (95%CI)	Other results	Quality of study
	N	gender male; mean age [SD] or age range; nationality	Comparison measure	Comparison measure			
SBQ: Sedentary Behaviour Questionnaire [24] Kastelic et al. 2019	42	20–24 yr: 52%; CAN 88%; M: 38 (8) yr F: 50 (7) yr; SVN	ActiPAL 3	0.018, P = 0.910	MD – 181 min (LoA – 467; 105)	Fair	
SBQ: Sedentary Behaviour Questionnaire [43] Prince et al. 2018	313	5%; 42.8 (11.9) yr; CAN	ActiGraph GT3X	0.43 (P < 0.001)	MD 350.27–0.6685* min	Poor	
SBQ: Sedentary Behaviour Questionnaire [77] Rosenberg et al. 2010	842	48%; M: 43.9 (8.0) yr F: 41.2 (8.7) yr; USA	Actigraph (model WAM 7164)	Wk – 0.02 (0.78) Wknd – 0.005 (0.93) Total – 0.01 (0.81)		Poor	
SIT-Q: Sedentary Behavior Questionnaire [78] Lynch et al. 2014	34	41%; 38.0 (19.5) yr; CAN	1) Diary – postural definition 2) Diary MET-based definition	1) Postural definition Total 0.53 (P < 0.01) Meals 0.19 (P = 0.11) Transportation 0.37 (P < 0.01) Work, study, and volunteering 0.76 (P < 0.01) Care 0.49 (P < 0.01) Leisure time 0.26 (P = 0.03) 2) MET-based definition Total 0.52 (P < 0.01) Meals 0.29 (P = 0.01) Transportation 0.34 (P < 0.01) Work, study, and volunteering 0.75 (P < 0.01) Care 0.46 (P < 0.01) Leisure time 0.26 (P = 0.03)		Poor	
SIT-Q-7d: last 7-d sedentary behavior questionnaire [79] Busschaert et al. 2015	66	Adults: 36%; 47.7 (10.5) yr; Older adults: 61%; 72.2 (4.4) yr; BEL	ActiPAL	Adults: Average day 0.49 (0.18; 0.71) P = 0.004 Wk 0.52 (0.22; 0.73) P = 0.002 Wknd 0.36 (– 0.29; 0.40) P = 0.743 Older Adults: Average day 0.48 (0.16; 0.71) P = 0.005 Wk 0.50 (0.19; 0.72) P = 0.003 Wknd 0.38 (0.04; 0.64) P = 0.0030		Fair	
SIT-Q-7d: last 7-d sedentary behavior questionnaire [80] Wijndeale et al. 2014	53	38%; 38.4 (11.3) yr; BEL	ActiPAL + domain log	Dutch version Total 0.52 P < 0.001 Meals 0.21 P > 0.05 Transportation 0.46 P < 0.001 Occupation 0.63 P < 0.001 Screen time 0.76 P < 0.001	Dutch MD 59 min (LoA – 4.81; 8.17)	Good	

Table 2 Construct validity of subjective sedentary behaviour measurement tools (Continued)

Subjective tool	Study population		Validity		Correlation (95%CI)	Other results	Quality of study
	N	gender male; mean age [SD] or age range; nationality	Comparison measure	Comparison measure			
STAR-Q [81] Csizmadia et al. 2014	102	40%; M: 50.6 (6.9) yr F: 46.0 (8.6) yr; CAN	Doubly Labeled Water and 7-d activity diary		Other 0.36 P < 0.05 Total 0.40 P < 0.001 Occupational sitting 0.75		Poor
TASST Taxonomy of Self-report SB Tools [31] 6) Sum of behaviours Chastin et al. 2018	700	48%; 64–83 yr; GBR	ActivPal		Previous day 6) 0.23 Previous wk 6) 0.32 Unanchored 6) 0.33 All P-values < 0.001	Previous day 6) -651; 367 Previous wk 6) -755; 265 Unanchored 6) -725; 286	Excellent
WSQ Workforce Sitting Questionnaire [82] Chau et al. 2011	95	37%; 18–60+ yr; AUS	Actigraph GT1M		Work: 0.45 workday: 0.34 non-work: 0.23 Total: 0.40	Total MD 44.55 (LoA – 295.31; 384.41) Work day MD 1.58 (LoA – 227.86; 231.02)	Poor
WSQ Workforce Sitting Questionnaire [50] van Nassau et al. 2015	42	14%; 38 (11) yr; AUS	ActivPAL		Day 1: 0.25 (P > 0.05) Day 2: 0.29 (P > 0.05) Day 3: 0.30 (P > 0.05)	No exact numbers available for MD and LoA, figure only	Fair
WSQ Workforce Sitting Questionnaire [83] Toledo et al. 2019	546	25%; 45.1 (16.4) yr; USA	ActivPAL			MD (95% CI): Work hours 47.9 min (39.2; 56.6) Non work hours on workdays – 38.3 (– 47.4; – 29.1) Non work hours on non-workdays – 106.7 (– 124.0; – 89.5) Kappa agreement (95% CI): 0.13 (0.08; 0.18)	Poor
Clark et al. 2015 [84]	700	45%; 59 yr (range 35–65+); AUS	ActivPAL3		0.46 (0.40; 0.52)	0.53*average hrs (LoA ±4.32 h)	Excellent
Clemes et al. 2012 [33]	44	30%; 41.5 (12.8) yr; GBR	ActiGraph		Domain specific: wk: 0.54 (P < 0.001) wknd: 0.13 (P = 0.41)	ICC Domain: wk: 0.64 (P < 0.001) wknd: 0.20 (P = 0.23)	Poor
Marshall et al. 2010 [86]	101	38%; F: 51–59 yr M: < 50 - > 60 yr; AUS	7-d behaviour log for correlation coefficient and ActiGraph GT1M for Bland-Altman plots		Travel F wk. 0.47; wknd 0.20 M wk. 0.64; wknd 0.15 Work F wk. 0.69; wknd 0.38	F Wk:-63.6 (– 395.5; 268.4) Wknd: 10.8 (– 396.0; 419.7)	Poor

Table 2 Construct validity of subjective sedentary behaviour measurement tools (Continued)

Subjective tool	Study population		Validity		Other results	Quality of study
	N	gender male; mean age [SD] or age range; nationality	Comparison measure	Correlation (95%CI)		
Van Cauwenberg et al. 2014 [87]	442	45%; 74.2 (6.2) yr; BEL	Actigraph GT3X +	0.30 (P < 0.001)	MD -81.88 (LoA -364.16; 200.41) at 540 min/d	Poor
Visser et al. 2013 [88]	83	51%; 74.3 (6.9) yr; NLD	Actigraph Model GT3X	0.35 (P < 0.05)	MD -2.1 hrs (LoA -7.40; 3.25)	Poor
Logs and diaries						
7-day SLIPA Log: (7-day Sedentary and Light Intensity Physical Activity Log) [89] Barwais et al. 2014	22	48%; 26.5 (4.1) yr; USA	GT3X	0.86 (0.70; 0.94)	MD -0.3 hrs (LoA -2.1; 1.6)	Poor
BAR; Bouchard Activity Record [90] Hart et al. 2011	32	50%; F: 30.2 (9.5) yr; M: 29.1 (7.9) yr; USA	ActivPAL	0.87 P < 0.05		Fair
BeWell24 Self-Monitoring App Toledo et al. 2017 [91]	17	85%; 49.0 (8.9) yr; USA	ActivPAL3c		ICC 0.35 (0.04; 0.56) MD -160.4 min (LoA-179.8; -141.0)	Poor
cpa24; Computer-Based 24-Hour Physical Activity Recall Instrument [92] Kohler et al. 2017	49	49%; 50 (22-69) yr; DEU	ActiGraph GT3X	0.54	MD -31 min (LoA -380; 319)	Poor
EMA; Ecological Momentary Assessment [93] Knell et al. 2017	168	33%; 43.4 (13.1) yr; USA	ActiGraph GT3X	0.16 (P = 0.03)		Poor
MARCA; Multimedia Activity Recall for Children and Adults [92] Aguilar-Farías et al. 2015	33	34%; 74.5 (7.6) yr; AUS	ActivPAL 3	day 0.63; wk: 0.67; wknd: 0.47		Fair
MARCA; Multimedia Activity Recall for Children and Adults [94] Gomersall et al. 2015	58	52%; 28 (7.4) yr; AUS	ActivPAL	0.77 (0.64; 0.86) P < 0.01	MD 0.59 hrs (LoA -2.35; 3.53)	Good

Table 2 Construct validity of subjective sedentary behaviour measurement tools (Continued)

Subjective tool	Validity		Other results	Quality of study
	Study population	Comparison measure		
PAMS ; Physical Activity Measurement Survey [95] Kim et al. 2017	N gender male; mean age [SD] or age range; nationality 1356 42%; 46.2 (SE 0.4) yr; USA	SenseWear Armband Mini	Correlation (95%CI) Day 1: 0.45 (P = 0.04) Day 2: 0.49 (P = 0.04)	LoA – 618.6; 176.0 min Poor
PDR ; Previous Day Recall [45] Kozey Keadle et al. 2014	15 47%; 33.1 (11.5) yr; USA	Direct observation	Correlation (95%CI) Day 1: 0.39 (P < 0.05) Day 2: 0.49 (P < 0.05) Leisure time Day 1: 0.56 (P < 0.05) Day 2: 0.47 (P < 0.05) Transportation Day 1: 0.50 (P < 0.05) Day 2: 0.42 (P < 0.05) Non-occupational sedentary time Day 1: 0.57 (P < 0.05) Day 2: 0.59 (P < 0.05)	ICC Total 0.81 (0.58; 0.91) Home 0.96 (0.91; 0.98) Work/School 0.93 (0.86; 0.97) Community 0.71 (0.47; 0.86) Household activity 0.84 (0.69; 0.93) Work 0.88 (0.75; 0.94) Education 0.12 (- 0.29; 0.48) Transportation 0.62 (0.32; 0.81) Leisure 0.55 (0.23; 0.77) Poor
Time Use Survey van der Ploeg et al. 2010 [96]	129 59%; 18–63 yr; AUS	ActiGraph GT1M	Household Day 1: 0.39 (P < 0.05) Day 2: 0.49 (P < 0.05) Leisure time Day 1: 0.56 (P < 0.05) Day 2: 0.47 (P < 0.05) Transportation Day 1: 0.50 (P < 0.05) Day 2: 0.42 (P < 0.05) Non-occupational sedentary time Day 1: 0.57 (P < 0.05) Day 2: 0.59 (P < 0.05)	Poor
Updated PDR ; Updated Previous Day Recall [97] Matthews et al. 2013	88 46%; 41.3 (14.8) yr; USA	ActivPal	M 0.81 (0.05) F 0.81 (0.04)	M MD 0.72 hrs (LoA – 2.61; 4.05) F MD 0.75 hrs (LoA – 2.21; 3.71) Good

F: female, M: male, MD: mean difference, LoA: limits of agreement

Table 3 Reliability of subjective sedentary behaviour measurement tools

First author (year) Measure examined	Reliability		ICC (95%CI)	Other results	Quality of study
	Interval	n			
1-item questionnaires					
EEPAQ ; Elderly EXERNET Physical Activity Questionnaire [17] Lopez-Rodriguez et al. 2017	2 wk	73	0.68		Good
GPAQ ; Global Physical Activity Questionnaire [21] Chu et al. 2018	1 wk	78	Self-administered: 0.68 (0.47; 0.82) Interview-administered: 0.78 (0.64; 0.88)		Good
IPAQ (short); International Physical Activity Questionnaire [26] Craig et al. 2003	8–10 d	2721		Correlation Range: 0.18–0.95	Fair
IPAQ (short); International Physical Activity Questionnaire [44] Rosenberg et al. 2008	3–7 d	255/ 257	Wk 0.59 Wknd 0.72 Total 0.81		Good
Modified MOSPA-Q ; MONICA Optional Study on Physical Activity Questionnaire [28] Chau et al. 2012	1 wk	75	0.54 (0.36; 0.68)		Good
PPAQ ; Paffenbarger Physical Activity Questionnaire [29] Simpson et al. 2015	3–6 mo	130	0.71 (0.61; 0.74)	Correlation 3 mo 0.39 (0.33; 0.51) 6 mo 0.43 (0.43; 0.60)	Fair
SED-GIH [30] Larsson et al. 2018	5.2 d (min 1 d, max 16 d)	94	0.86 (95% CI 0.79–0.90)	Weighted Kappa 0.77 (95% CI 0.68–0.86)	Good
SQ ; Single Question [32] Aguilar-Farías et al. 2015	1 wk	38	D 0.79; wk. 0.80; wknd: 0.78		Fair
TASST ; Taxonomy of Self-report SB Tools [34] 1) Single item total times; 2) TV time Donijé et al. 2018	1d, 1 wk	18	Previous day recall: 1) 0.414 (0.227; 0.655) 2) 0.595 (0.412; 0.783) Previous week recall: 1) 0.531 (0.1; 0.794) 2) 0.856 (0.657; 0.944)		Poor
YPAS ; Yale Physical Activity Survey for Older Adults [36] Gennuso et al. 2015	10 d	58	0.588 P < 0.001		Good
Gao et al. 2017 [102]	1 d	70		Day-to-day variation: 9.4% ± 11.4%	Poor
2–9-item questionnaires					
AQUAA ; Activity Questionnaire for Adults and Adolescents [38] Chinapaw et al. 2009	2 wk	47	0.60 (0.40; 0.74)		Good
CHAMPS ; Community Health Activities Model Program for Seniors [40] Hekler et al. 2012	6 mo	748	0.56		Fair
CHAMPS ; Community Health Activities Model Program for Seniors [36] Gennuso et al. 2017	10 d	58	CHAMPS: 0.638 P < 0.001		Good
FPACQ ; Flemish Physical Activity Computerized Questionnaire [41] Matton et al. 2007	2 wk	102	Employed / unemployed Eat M 0.74 (0.53; 0.86); F 0.67 (0.43; 0.82) Sleep M 0.84 (0.70; 0.92); F 0.83 (0.70; 0.91)		Good

Table 3 Reliability of subjective sedentary behaviour measurement tools (Continued)

First author (year) Measure examined	Reliability		ICC (95%CI)	Other results	Quality of study
	Interval	n			
IPAQ (long); International Physical Activity Questionnaire [82] Chau et al. 2011	1 wk	95	Tv M 0.93 (0.86; 0.97); F 0.92 (0.84; 0.96) <i>Retired individuals</i> Eat M 0.24 (-0.20; 0.61); F 0.14 (-0.35; 0.58) Sleep M 0.94 (0.86; 0.98); F 0.90 (0.75; 0.97) Tv M 0.76 (0.49; 0.89); F 0.89 (0.72; 0.96) Wk: 0.69 (0.56; 0.78) Wknd: 0.65 (0.51; 0.76) Total: 0.73 (0.61; 0.81)		Good
IPAQ (long); International Physical Activity Questionnaire [26] Craig et al. 2003	8–10 d	2721		Range: 0.28–0.93	Fair
IPAQ (long); International Physical Activity Questionnaire [44] Rosenberg et al. 2008	3–7 d	255/ 257	Wk 0.81 Wknd 0.84 Total 0.82		Good
OPAQ ; Occupational Physical Activity Questionnaire [48] Reis et al. 2005	2 wk	41	0.78 (0.62; 0.87)		Fair
OSPAQ ; Occupational Sitting and Physical Activity Questionnaire [28] Chau et al. 2012	1 wk	84	0.89 (0.83; 0.92)		Good
OSPAQ ; Occupational Sitting and Physical Activity Questionnaire [51] Jancey et al. 2014	7 d	99	0.66 (0.49; 0.77)		Good
OSPAQ ; Occupational Sitting and Physical Activity Questionnaire [49] Pedersen et al. 2016	1 wk	75	0.44 (0.24; 0.60)		Good
PASB-Q ; Physical Activity and Sedentary Behavior Questionnaire [54] Fowles et al. 2017	7 d	35		Correlation Total SB: 0.85 Breaks: 0.86 Work: 0.88 Leisure: 0.66 All P < 0.05	Fair
Regicor Short Physical Activity Questionnaire [59] Molina et al. 2017	1 wk	114	0.908 (0.867; 0.937)		Fair
RPAQ ; Recent Physical Activity Questionnaire [58] Besson et al. 2010	F 14.3 (3.7) d M 16.4 (5.9) d	131	0.76 (P < 0.001)	No exact numbers available for MD and LoA, figure only	Good
SCCS PAQ ; Southern Community Cohort Study Physical Activity Questionnaire [60] Buchowski et al. 2012	12–15 mo	118		Correlation Total: 0.33, P = 0.002 In car/bus: 0.33, P = 0.002 At work: 0.48, P < 0.001 Viewing TV/movies: 0.53, P < 0.001 Using home computer: 0.25, P = 0.02 Other: 0.24, P = 0.02	Poor
SITBRQ ; Workplace Sitting Breaks Questionnaire [61] Pedisic et al. 2014	7–14 d	96		Correlation Freq breaks: 0.71 (0.59; 0.79)	Good

Table 3 Reliability of subjective sedentary behaviour measurement tools (Continued)

First author (year) Measure examined	Reliability		ICC (95%CI)	Other results	Quality of study
	Interval	n			
Stand Up For Your Health Questionnaire [62] Gardiner et al. 2011	7 d	48	Total: 0.52 (0.27; 0.70) TV viewing: 0.76 (0.62; 0.86) Computer use: 0.79 (0.65; 0.88) Reading: 0.74 (0.51; 0.86) Socializing: 0.38 (0.11; 0.60) Transport: 0.40 (0.14; 0.61) Hobbies: 0.35 (0.07; 0.58) Other: 0.04 (- 0.25; 0.32)	Duration breaks: 0.59 (0.45; 0.71) Cohen's kappa Freq breaks: 0.74 (0.64; 0.84) Duration breaks: 0.61 (0.38; 0.85)	Fair
STAQ : Sedentary, Transportation and Activity Questionnaire [63] Mensah et al. 2016	1 mo	32	Total 0.52 (0.22; 0.73) Leisure 0.37 (0.03; 0.62) Transport 0.28 (- 0.06; 0.56) Work 0.71 (0.49; 0.84) See article for more settings		Good
Survey of older adults' sedentary time [64] Gennuso et al. 2016	7 d	44	0.48 P < 0.001		Fair
Web-based physical activity questionnaire Active-Q [65] Bonn et al. 2015	3 wk	148	0.80 (0.74–0.86)		Good
WSWQ : Percentage-Method Improves Properties of Workers' Sitting- and Walking-Time Questionnaire [66] Matsoe et al. 2016	1 wk	62	Non-working time: Time = 0.49 (0.28–0.66) Percentage = 0.71 (0.56–0.81) Non-working day: Time = 0.64 (0.47–0.76) Percentage = 0.78 (0.66–0.86)		Good
Mielke et al. 2020 [70]	7 d	78		Lin's CCC 0.87 (0.81–0.92)	Poor
Sudholz et al. 2017 [71]	7 d	59	Sitting time 0.78 (0.65; 0.86) Breaks 0.65 (0.48; 0.78)		Good
≥10-item questionnaires					
ASBQ : Adult sedentary Behaviour Questionnaire [21] Chu et al. 2018	1 wk	84	Self-administered: Total 0.74 (0.51; 0.86) Work 0.70 (0.43; 0.84) Transport 0.59 (0.22; 0.78) Eating 0.73 (0.48; 0.86) TV 0.85 (0.73; 0.92) Computer 0.57 (0.32; 0.75) Other 0.33 (0.04; 0.57) Interview-administered Total 0.66 (0.37; 0.81) Work 0.89 (0.80; 0.94) Transport 0.78 (0.59; 0.88) Eating: 0.71 (0.47; 0.84)		Good

Table 3 Reliability of subjective sedentary behaviour measurement tools (Continued)

First author (year) Measure examined	Reliability		n	ICC (95%CI)	Other results	Quality of study
	Interval	n				
MPAQ : Madras Physical Activity Questionnaire [73] Anjana et al. 2015	1 mo	543	TV 0.81 (0.67; 0.89) Computer 0.62 (0.40; 0.78) Other 0.42 (0.13; 0.64)			Good
MSTQ : Multicontext Sitting Time Questionnaire [74] Whitfield et al. 2013	7.2 d (-3; 13.9)	21	Total: 0.81 TV viewing: 0.67 <i>Workday</i> : Total 0.76 (0.50; 0.89) Working/reading/studying: 0.83 (0.62; 0.93) TV/movie: 0.93 (0.84; 0.97) Computer/video games: 0.39 (0.00; 0.70) Transport: 0.97 (0.93; 0.99) Socializing: 0.27 (0.00; 0.62) <i>Non-working</i> : Total 0.72 (0.42; 0.87) Working/reading/studying: 0.65 (0.31; 0.84) TV/movies: 0.85 (0.67; 0.94) Computer/video games: 0.84 (0.64; 0.93) Transport: 0.70 (0.40; 0.87) Socializing: 0.62 (0.27; 0.83) <i>Weekdays</i> : Total: 0.85 (0.75; 0.91) TV: 0.86 (0.76; 0.92) Computer games: 0.83 (0.72; 0.90). Sit listen to music: 0.71 (0.54; 0.83). Sit and talk on telephone: 0.81 (0.68; 0.89). Work: 0.77 (0.63; 0.87). Reading: 0.64 (0.44; 0.78). Playing music: 0.90 (0.82; 0.94). Arts and crafts: 0.70 (0.53; 0.82). Sitting driving in car: 0.76 (0.61; 0.86). <i>Weekend</i> Total: 0.77 (0.63; 0.86) TV: 0.83 (0.72; 0.90). Computer games: 0.80 (0.67; 0.88). Sit listen to music: 0.67 (0.49; 0.80). Sit and talk on telephone: 0.73 (0.57; 0.84). Work: 0.64 (0.44; 0.61). Reading: 0.48 (0.24; 0.67). Playing music: 0.93 (0.87; 0.96). Arts and crafts: 0.51 (0.27; 0.69). Sitting driving in car: 0.72 (0.56; 0.83). Total: 0.65 (0.49; 0.78) Meals: 0.60 (0.42; 0.74) Transportation: 0.59 (0.41; 0.73) Work, study, and volunteering: 0.86 (0.78; 0.91) Leisure: 0.61 (0.43; 0.74)			Poor
SBOQ : Sedentary Behaviour Questionnaire [77] Rosenberg et al. 2010	2 wk	49	Adults: 14 ± 5 d Range 0.06; 1.00 Older adults: 9 ± 1 d Range - 0.20; 1.00 Average day			Fair
SIT-Q : Sedentary Behavior Questionnaire [78] Lynch et al. 2014	1 mo	64	3.3 wk. (2; 8 Dutch:			Good
SIT-Q-7d : last 7-d sedentary behavior questionnaire [79] Busschaert et al. 2015	Adults: 14 ± 5 d Older adults: 9 ± 1 d	42				Poor
SIT-Q-7d : last 7-d sedentary behavior questionnaire [80]	3.3 wk. (2; 8 Dutch:					Good

Table 3 Reliability of subjective sedentary behaviour measurement tools (Continued)

First author (year) Measure examined	Reliability		ICC (95%CI)	Other results	Quality of study
	Interval	n			
Wijndeale et al.2014	wk)	53 English: 281	<p><i>Dutch</i> Total: 0.68 (0.50; 0.81) Transportation: 0.58 (0.37; 0.74) Occupation: 0.66 (0.46; 0.79) Screen time: 0.50 (0.26; 0.68) Other leisure time: 0.52 (0.29; 0.70) Breaks occupation: 0.26 (-0.07; 0.54) Breaks TV viewing: 0.31 (-0.01; 0.57)</p> <p><i>English</i> Total: 0.53 (0.44; 0.62) Transportation: 0.50 (0.40; 0.58) Occupation: 0.74 (0.67; 0.80) Screen time: 0.61 (0.53; 0.67) Other leisure time: 0.45 (0.35; 0.54) Breaks occupation: 0.12 (-0.04; 0.28) Breaks TV viewing: 0.28 (0.15; 0.39) See article for more settings and weekdays / weekend days</p>		
STAR-Q [81] Csizmadia et al. 2014	3 mo	95	Total: 0.53 (0.37; 0.66) 0.45 (0.28; 0.59)		Fair
	6 mo	96	Work: 0.69 (0.57; 0.78) 0.69 (0.57; 0.78) TV viewing: 0.72 (0.61; 0.80) 0.63 (0.49; 0.74) Computer: 0.60 (0.46; 0.71) 0.62 (0.48; 0.73) Reading: 0.56 (0.41; 0.68) 0.39 (0.21; 0.55)		
TASST Taxonomy of Self-report SB Tools [34] Dontije et al. 2018	1 d, 1 wk	18	Previous day recall: Sum of behaviours 0.743 (0.591; 0.874) Previous week recall: Sum of behaviours 0.758 (0.462; 0.902)		Poor
	1 wk	95	<i>Workday</i> Total: 0.65 (0.51; 0.75) Transport: 0.67 (0.54; 0.77) Work: 0.63 (0.49; 0.74) TV: 0.91 (0.87; 0.94) Computer: 0.56 (0.40; 0.69) Other leisure activities: 0.68 (0.55; 0.78) <p><i>Non-work</i> Total: 0.80 (0.72; 0.87) Transport: 0.60 (0.45; 0.72) Work: 0.50 (0.33; 0.64) TV: 0.79 (0.69; 0.85) Computer: 0.81 (0.73; 0.87) Other leisure activities: 0.59 (0.44; 0.71) Total 0.73 (0.61; 0.81)</p>		
WSQ , Workforce Sitting Questionnaire [82] Chau et al. 2011	1 wk	34	Total 0.74 (0.55–0.86) <i>Workday</i>		Fair
	2 wk	34	Total 0.74 (0.55–0.86) <i>Workday</i>		
Ishii et al. 2018 [85]	1 wk	95	Total: 0.65 (0.51; 0.75) Transport: 0.67 (0.54; 0.77) Work: 0.63 (0.49; 0.74) TV: 0.91 (0.87; 0.94) Computer: 0.56 (0.40; 0.69) Other leisure activities: 0.68 (0.55; 0.78) <p><i>Non-work</i> Total: 0.80 (0.72; 0.87) Transport: 0.60 (0.45; 0.72) Work: 0.50 (0.33; 0.64) TV: 0.79 (0.69; 0.85) Computer: 0.81 (0.73; 0.87) Other leisure activities: 0.59 (0.44; 0.71) Total 0.73 (0.61; 0.81)</p>		Good
	2 wk	34	Total 0.74 (0.55–0.86) <i>Workday</i>		

Table 3 Reliability of subjective sedentary behaviour measurement tools (Continued)

First author (year) Measure examined	Reliability		ICC (95%CI)	Other results	Quality of study			
	Interval	n						
Marshall et al. 2010 [86]	mean 11 d (range 7–28 d)	101	Car 0.85 (0.71–0.92) Public transport 0.60 (0.33; 0.78) Work 0.89 (0.80; 0.95) TV 0.76 (0.58; 0.88) Computer 0.72 (0.51; 0.85) Leisure 0.45 (0.15; 0.68) Total 0.77 (0.60; 0.88) <i>Non-workday</i> Car 0.53 (0.24; 0.74) Public transport 0.20 (–0.15; 0.78) Work –0.07 (–0.40; 0.28) TV 0.79 (0.63; 0.89) Computer 0.72 (0.51; 0.85) Leisure 0.46 (0.14; 0.69) Total 0.53 (0.24; 0.73)	Total sedentary time M Wk MD –4.3 min (LoA –189.2; 180.7) Wknd MD –8.1 min (LoA –195.0; 178.8) F Wk MD –3.9 min (LoA –235.4; 227.5) Wknd MD –5.6 min (LoA –125.1; 113.9)	Good			
	Van Cauwenberg et al. 2014 [87]	8 d (1.7)	428	Work M 0.86 (0.79; 0.90) F 0.79 (0.73; 0.84) TV M wk. 0.65 (0.52; 0.75); wknd 0.62 (0.48; 0.73) Computer F wk. 0.63 (0.52; 0.71); wknd: 0.72 (0.64; 0.79) M wk. 0.62 (0.48; 0.73); wknd: 0.59 (0.44; 0.71) Total 0.77 (0.57; 0.89) TV viewing: 0.92 (0.83; 0.96) Computer use: 0.76 (0.54; 0.88) Reading: 0.60 (0.29; 0.79) Hobbies: 0.57 (0.26; 0.78) Seated conversation/listening: 0.40 (0.04; 0.67) Telephone: 0.69 (0.43; 0.84) Public transport: 0.46 (0.11; 0.71) Driving car: 0.79 (0.59; 0.90) Passenger in car: 0.11 (–0.27; 0.46) Household: 0.12 (–0.18; 0.53) Resting: 0.20 (–0.18; 0.53) Eating: 0.46 (0.11; 0.71)		Good		
		Visser et al. 2013 [88] Logs and diaries	23 d (SD 8)	63	0.71 (0.57; 0.81)		Fair	
			BeWell24 Self-Monitoring App [91] Toledo et al. 2017	2 wk	17	0.65 (0.43; 0.82)		Poor
				cpa24 : Computer-Based 24-Hour Physical Activity Recall Instrument [92] Kohler et al. 2017	3 hrs	67	0.75	

Table 3 Reliability of subjective sedentary behaviour measurement tools (Continued)

First author (year) Measure examined	Reliability		ICC (95%CI)	Other results	Quality of study
	Interval	n			
MARCA : Multimedia Activity Recall for Children and Adults [32] Aguilar-Farias et al. 2015	0.5–1 hrs	38	2 days before 0.72; yesterday 0.96		Fair
Time Use Survey [96] van der Ploeg et al. 2014	7 d	134	Non-occupational 0.55 (0.42; 0.66) Occupational 0.63 (0.51; 0.72)		Excellent

F: female, M: male, MD: mean difference, LoA: limits of agreement, d: day, wk: week, mo: month

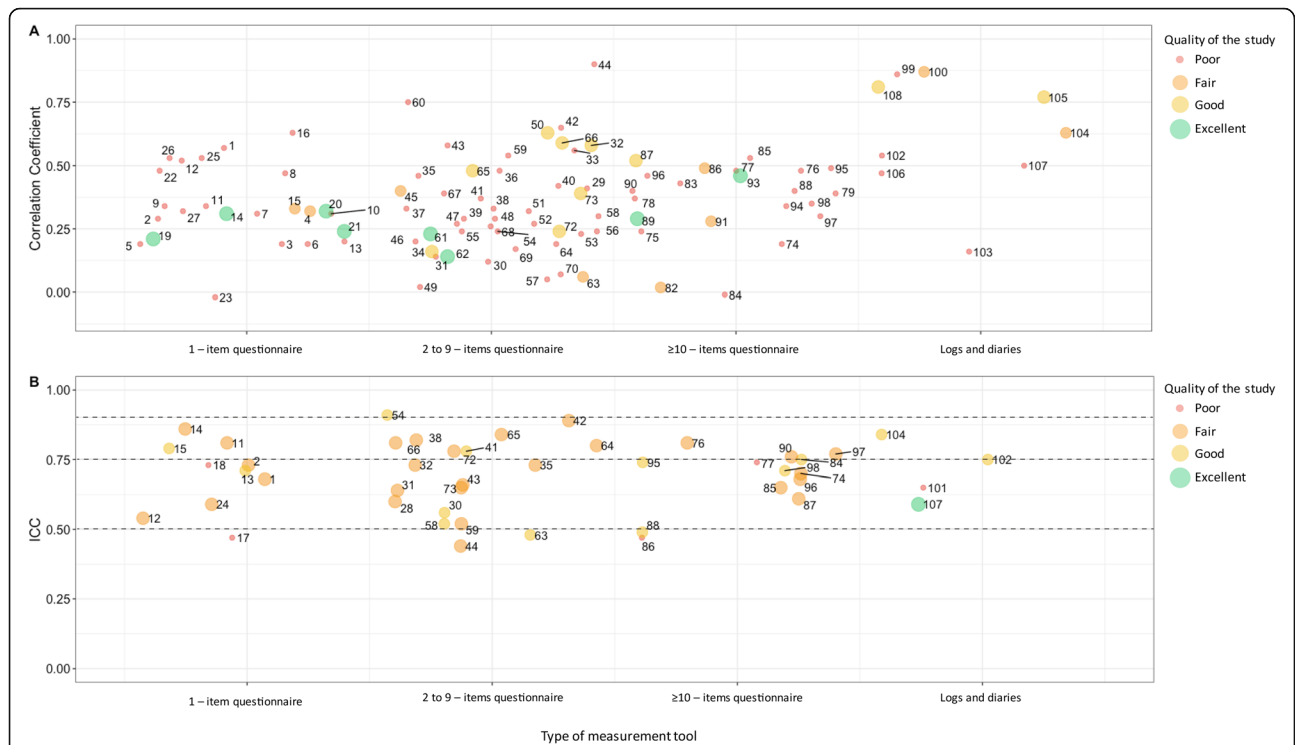


Fig. 2 Overview of construct validity (a) and test retest reliability (b). 1 EEPAQ, Lopez-Rodríguez et al. 2017; 2 GPAQ, Chu et al. 2018; 3 GPAQ, Cleland et al. 2014; 4 GPAQ, Kastelic et al. 2019; 5 GPAQ, Laeremans et al. 2017; 6 GPAQ, Metcalf et al. 2018; 7 GPAQ, Rudolf et al. 2020; 8 GPAQ, Wanner et al. 2017; 9 IPAQ (short), Craig et al. 2003; 10 IPAQ (short), Prince et al. 2018; 11 IPAQ (short), Rosenberg et al. 2008; 12 Modified MOSPA-Q, Chau et al. 2012; 13 PPAQ, Simpson et al. 2015; 14 SED-GIH; 15 SQ, Aguilar-Farías et al. 2015; 16 SQ, Clemes et al. 2012; 17 TASST Single item total times, Dontje et al. 2018; 18 TASST TV time, Dontje et al. 2019; 19 TASST Single item total times, Chastin et al. 2018; 20 TASST Single item proportion, Chastin et al. 2018; 21 TASST TV time, Chastin et al. 2018; 22 T-SQ, Kozey-Keadle et al. 2012; 23 TV-Q, Kozey-Keadle et al. 2012; 24 YPAS, Gennuso et al. 2015; 25 Single item proportion (3 months), Gao et al. 2017; 26 Single item proportion (1 day), Gao et al. 2017; 27 Gupta et al. 2017 [29]; 28 AQUAA, Chinpaw et al. 2009; 29 Cancer Prevention Study-3 Sedentary Time Survey, Rees-Punia et al. 2018; 30 CHAMPS, Hekler et al. 2012; 31 CHAMPS, Gennuso et al. 2017; 32 FPACQ, Matton et al. 2007; 33 FPACQ, Scheers et al. 2012; 34 IPAQ (long), Chastin et al. 2014; 35 IPAQ (long), Chau et al. 2011; 36 IPAQ (long), Cleland et al. 2018; 37 IPAQ (long), Craig et al. 2003; 38 IPAQ (long), Rosenberg et al. 2008; 39 IPAQ (long), Ruan et al. 2018; 40 IPAQ (long), Wanner et al. 2016; 41 OPAQ, Reis et al. 2005; 42 OSPAQ, Chau et al. 2012; 43 OSPAQ, Jancey et al. 2014; 44 OSPAQ, Pedersen et al. 2016; 45 OSPAQ, van Nassau et al. 2015; 46 PAS2, Pedersen et al. 2017; 47 PASBAQ, Scholes et al. 2014; 48 PASB-Q total SB, Fowles et al. 2017; 49 PASB-Q breaks, Fowles et al. 2017; 50 PAST-U, Clark et al. 2016; 51 PAT Survey, Yi et al. 2015; 52 RPAQ, Besson et al. 2010; 53 RPAQ, Golubic et al. 2014; 54 Regicor Short Physical Activity Questionnaire [47] Molina et al. 2017; 55 SCCS PAQ, Buchowski et al. 2012; 56 SITBRQ bout frequency, Pedisic et al. 2014; 57 SITBRQ bout duration, Pedisic et al. 2014; 58 Stand Up For Your Health Questionnaire, Gardiner et al. 2011; 59 STAQ, Mensah et al. 2016; 60 TASST, Sum of domains, Dontje et al. 2018; 61 TASST Sum of domains, Chastin et al. 2018; 62 TASST Patterns, Chastin et al. 2018; 63 Survey of older adults' sedentary time, Gennuso et al. 2016; 64 Web-based physical activity questionnaire Active-Q, Bonn et al. 2015; 65 WSWQ Time method, Matsoe et al. 2016; 66 WSWQ Percentage method, Matsoe et al. 2016; 67 Sedentary time, Clark et al. 2011; 68 Sedentary breaks, Clark et al. 2011; 69 Jefferis et al. 2016; 70 Lagersted-Olsen et al. 2014; 71 Mielke et al. 2020; 72 Sitting time, Sudholz et al. 2017; 73 Sitting breaks, Sudholz et al. 2017; 74 ASBQ, Chu et al. 2018; 75 D-SQ, Kozey-Keadle et al. 2012; 76 MPAQ, Anjana et al. 2015; 77 MSTQ, Whitfield et al. 2013; 78 PAFQ sitting time, Verhoog et al. 2019; 79 PAFQ sitting proportion, Verhoog et al. 2019; 80 PAST-WEEK-U, Moulin et al. 2020; 81 NIGHTLY-WEEK-U, Moulin et al. 2020; 82 SBQ, Kastelic et al. 2019; 83 SBQ, Prince et al. 2018; 84 SBQ, Rosenberg et al. 2010; 85 SIT-Q, Lynch et al. 2014; 86 SIT-Q-7d, Busschaert et al. 2015; 87 SIT-Q-7d, Wijndeale et al. 2014; 88 STAR-Q, Csizmadia et al. 2014; 89 TASST Chastin et al. 2018; 90 WSQ, Chau et al. 2011; 91 WSQ, van Nassau et al. 2015; 92 WSQ, Toledo et al. 2019; 93 Clark et al. 2015; 94 Clemes et al. 2012; 95 Ishii et al. 2018; 96 Marshall et al. 2010; 97 Van Cauwenberg et al. 2014; 98 Visser et al. 2013 [64]; 99 7-day SLIPA Log, Barwais et al. 2014; 100 BAR, Hart et al. 2011; 101 BeWell24 Self-Monitoring App, Toledo et al. 2017; 102 cpar24, Kohler et al. 2017; 103 EMA, Knell et al. 2017; 104 MARCA, Aguilar-Farías et al. 2015; 105 MARCA, Gomersall et al. 2015; 106 PAMS, Kim et al. 2017; 107 Time Use Survey, van der Ploeg et al. 2014; 108 Updated PDR, Matthews et al. 2013. The studies within each category are placed randomly to avoid overlap when they are aligned. An ICC > 0.90 was considered as excellent, ICC between 0.75–0.90 was considered as good, ICC between 0.50–0.75 as moderate and > 0.50 as poor

90%). Furthermore, correlation coefficient estimates of the questionnaires with ≥ 10 -item ($R = 0.37$ [95% CI 0.30–0.43], I^2 : 86%) did not differ much from the questionnaires with fewer items (1-item questionnaire $R = 0.34$ [95% CI 0.30–0.39], I^2 : 68%; 2 to 9-item questionnaires $R = 0.35$ [95% CI 0.29–0.41], I^2 : 93%) (Fig. 2a). Stratified analyses, including only studies examining questionnaires with a good-to-excellent quality, revealed similar results (R questionnaires = 0.35 [95% CI 0.28–0.42], I^2 : 87%).

Reliability

Reliability for total sitting time and number of breaks in sitting time was determined in 44 studies. One study was rated with excellent quality; other studies were rated with good ($n = 27$), fair ($n = 16$), and poor ($n = 8$) quality. Most studies with a lower quality of the study were limited by a small sample size and calculation of correlation coefficients instead of ICCs. The time interval between the first and second assessment ranged between 0.5 h and 15 months, but most studies had an interval of 1–2 weeks ($n = 40$, Table 3). The majority of the studies calculated the ICC to examine the test-retest reliability of SB, but some studies used correlation coefficients ($N = 6$), Bland-Altman plots with mean difference and limits of agreement ($N = 2$), and kappa values ($N = 2$). The ICC of the test-retest reliability of the subjective measures of SB ranged between 0.44 and 0.91 (Table 3, Fig. 2b). The ICC estimates were comparable between the logs and diaries, ≥ 10 -items questionnaires, 2 to 9-item questionnaires, and 1-item questionnaires.

Discussion

Time spent in SB has markedly increased over the last few decades and is expected to continue to increase even further [107]. Since SB is associated with many adverse health outcomes [4–6], exposure to excessive levels of SB represents an emerging health threat, particularly in the least physically active [108]. To improve quality and guide future studies in this rapidly expanding area of research, this systematic review assessed the validity and reliability of subjective measures of SB, taking the methodological quality into account. We present the following observations. First, despite the presence of several measures to assess SB, significant variability in measurement properties and quality of the studies is present. Second, criterion validity of the subjective measures ranged between poor to excellent (R range –0.01 to 0.90), in which the quality of most studies (i.e. level of evidence) was poor. Third, the validity of the logs/diaries was more favourable compared to the validity of questionnaires, with little improvement in validity of

questionnaires when including multiple questions. Fourth, a moderate-to-good reliability was found for questionnaires and logs/diaries, with the quality of these studies being largely fair-to-good. Taken together, logs and diaries are recommended to validly and reliably assess SB when only self-report measures are available. However, considering limitations pertaining to logs and diaries (e.g. time constraint, resources), one may prefer using questionnaires in larger scaled observations.

Validity of measures of SB

This meta-analysis showed that the overall validity for instruments to assess SB characteristics was moderate to low. These observations raise the question whether these results relate to the poor validity of methods to assess SB per se or the poor quality of the studies that were included. Excluding studies with lower quality from our meta-analyses reinforced the poor-to-moderate validity of the various methods, suggesting measures of SB possess poor validity. It is important to indicate that questionnaires examining physical activity show similarly poor level of validity [8]. This highlights the difficulty of examining subjective physical (in) activity behaviours with questionnaires, a finding that seems present across the whole physical activity spectrum: from SB to exercise. Due to the low validity and the large variation in quality, the results of different studies are difficult to compare or harmonise. More importantly, the large variety in validity and questionnaire characteristics (i.e. type and context of SBs) prevents the identification of one (or few) questionnaire(s) that can be recommended for all type of future research that aim to examine SB.

Factors explaining the poorer variation in validity of the questionnaires versus diaries/logs may relate to differences in qualitative attributes (e.g. recall period and questions/formats). For example, diaries/logs typically adopt a short recall period (e.g. every 15–30 min), whilst questionnaires are often filled in covering a longer recall period (i.e. day, week, and/or month). Consequently, diaries and logs are less reliant on long-term recall and can more accurately capture sporadic and intermittent behaviours. This fits with the higher validity of diaries/logs versus questionnaires. Unfortunately, this approach of using diaries/logs comes with the cost of high participant burden (in time), which subsequently may limit the response and compliance rate and introduce reporting bias. Another potential limitation of logs/diaries is that repeatedly filling in SBs may influence participants' behaviour and cause (unwanted) adjustment of SB. These factors should be considered when deciding on the preferred way to assess SB in a future study.

Previous work-related poor validity of questionnaires to systematic and random error, specifically reporting and recall bias which may lead to a low agreement with over- and underestimation (Table 2). For example, a potential underestimation of SB in single-item questionnaires was suggested [15, 104], whereas wider limits of agreement in questionnaires are present with multiple items [104]. Another factor contributing to validity of questionnaires may relate to the number of questions, and therefore detail of information, with more questions on SB potentially improving the criterion validity of the measurement tool. In contrast to this hypothesis, our analysis revealed no substantial differences between the criterion validity of the 1-item, 2-to-9-item and ≥ 10 -item questionnaires. One possible explanation is that participants find it difficult to recall SB, with multiple-item questionnaires making it even more complicated to replicate detailed and domain-specific patterns of SB [31]. Furthermore, some behaviours are easier to remember because these are more habitual and restricted to certain periods during the day, e.g. TV viewing, computer use or sitting at work [15, 31, 86]. Finally, multiple-item questionnaires may over-report SB because subjects may report sedentary activities twice when using sub-scales (e.g. driving while listening to music). Although more questions may cover multiple domains and provide more detailed information, the complexity of these questionnaires may contribute to the negligible improvement in criterion validity of multiple-item questionnaires for total sedentary time. Nonetheless, exploring multiple domains of sitting may still seem relevant. For example, some domains are more strongly associated with poor health outcomes [12–14], whilst detailed information about domains may provide insight for intervention development.

Reliability of subjective measures of SB

Despite the significant heterogeneity in validity of the various measures to assess SB, the reliability of the questionnaires and diaries or logs were moderate-to-good. Importantly, these conclusions are based on studies with a fair-to-good quality. A central question pertaining to the reliability of questionnaires is whether differences are present in reliability for weekdays versus weekend days or for workdays versus non-workdays, especially given the marked differences in (sedentary) behaviour that exist between these days [104]. Indeed, our study found that approximately 50% of included studies reported a $\geq 10\%$ better reliability to assess SB during weekdays versus weekend days or during workdays versus non-workdays (Table 3). These observations support a previous review,

which reported higher reliability for weekdays compared to weekend days [104]. Moreover, we found that reliability was better for specific behaviours, such as TV viewing, compared to a more general categories, such as 'other leisure time activities'. An explanation for this finding is that more specific and regularly performed behaviours have a higher reliability [15].

Choosing an appropriate measurement tool

Logs and diaries have a higher validity compared to the questionnaires, are less reliant on long-term recall and can more accurately capture sporadic and intermittent behaviours. Therefore, we recommend logs and diaries as self-reported measurement tools. However, important limitations such as time constraints, lack of resources and the potential to influence participants' behaviour, make them less useful for large-scale observational studies and/or intervention studies. Within the spectrum of questionnaires, there is no obvious preference for a single questionnaire. In fact, the most appropriate tool seems to depend on the nature of the study, especially since this review showed large variety in both validity and questionnaire characteristics (i.e. type and context of SBs). Therefore, some studies will benefit from questionnaires focusing on specific domains of SB, whilst others will benefit from a reliable estimate of total sedentary time or distribution of SB. Furthermore, when performing an intervention study, measures will benefit from the ability to measure changes across time. Since this ability was not examined within this review, we cannot make specific recommendations related to this type of studies. Nonetheless, these characteristics should be taken into account when planning such studies. Ultimately, and when feasible, a combination of objective and subjective assessments is preferred to provide valid and reliable insight into SB.

Conclusions

This review identified the widespread (and rapidly growing) use of a large range of self-reported measures of SB, which significantly differ in type, extensiveness, complexity and duration. Our results indicated that the criterion validity of subjective measures ranged between poor and excellent, whereas the quality of most studies was poor. The validity of the logs/diaries was significantly higher compared to the questionnaires, with little improvement in criterion validity of questionnaires when increasing items to assess SB. Therefore, when only self-report measures are feasible, logs and diaries are recommended to validly and reliably assess SB, but due to time

constraints and resources related to logs and diaries, 1-item questionnaires may be preferred in large-scale studies when showing similar validity and reliability compared to longer questionnaires. Whenever feasible, the combination of objective and subjective assessments will provide the most valid and reliable method to assess SB.

Supplementary information

Supplementary information accompanies this paper at <https://doi.org/10.1186/s12966-020-00972-1>.

Additional file :1 Table S1. Search strategy. **Table S2.** Assessing the quality of studies examining the criterion validity. **Table S3.** Assessing the quality of studies examining the reliability.

Abbreviations

ICC: Intra Correlation Coefficients; MET: Metabolic Equivalent of Task; R: Correlation Coefficient Estimate; SB: Sedentary Behaviour

Acknowledgements

Not applicable.

Role of the funding body

The content is solely the responsibility of the authors and does not necessarily represent the official views of previously mentioned the funding organizations described in the funding section.

Authors' contributions

All authors contributed to the study conception and design. EAB and YAW performed the literature searches, data extraction and quality assessments. The first draft of the manuscript was written by EAB and all authors commented on and revised previous versions of the manuscript. All authors read and approved the final manuscript.

Funding

T.M.H.E. is financially supported by a grant from the Dutch Heart Foundation (#2017 T051). G.N.H. is supported by an Australian NHMRC Career Development Fellowship (#1086029). D.W.D is supported by a NHMRC Senior Research Fellowship (NHMRC APP1078360) and supported in part by the Victorian Government's OIS Program.

Availability of data and materials

Not applicable.

Ethics approval and consent to participate

Not applicable.

Consent for publication

Not applicable.

Competing interests

The authors declare that they have no competing interests.

Author details

¹Radboud Institute for Health Sciences, Department of Physiology, Radboud University Medical Center, P.O. Box 9101, 6500, HB, Nijmegen, The Netherlands. ²Research Institute for Sport and Exercise Sciences, Liverpool John Moores University, Liverpool, UK. ³Baker Heart & Diabetes Institute, Melbourne, Australia. ⁴Mary MacKillop Institute for Health Research, Australian Catholic University, Melbourne, Australia. ⁵The University of Queensland, School of Public Health, Brisbane, Australia.

Received: 5 December 2019 Accepted: 12 May 2020

Published online: 15 June 2020

References

1. Warburton DE, Katzmarzyk PT, Rhodes RE, Shephard RJ. Evidence-informed physical activity guidelines for Canadian adults. *Can J Public Health*. 2007; 98(Suppl 2):S16–68.
2. Bauman A LM, Schöppe S. The Health Benefits of Physical Activity in Developing Countries. Geneva: World Health Organization; 2005.
3. 2010 WHO. Global recommendations on physical activity for health. 2010 [07-08-2017]. Available from: <http://www.who.int/dietphysicalactivity/publications/9789241599979/en/>.
4. Biswas A, Oh PI, Faulkner GE, Bajaj RR, Silver MA, Mitchell MS, et al. Sedentary time and its association with risk for disease incidence, mortality, and hospitalization in adults: a systematic review and meta-analysis. *Ann Intern Med*. 2015;162(2):123–32.
5. van der Ploeg HP, Chey T, Korda RJ, Banks E, Bauman A. Sitting time and all-cause mortality risk in 222 497 Australian adults. *Arch Intern Med*. 2012; 172(6):494–500.
6. Eijssvogels TM, George KP, Thompson PD. Cardiovascular benefits and risks across the physical activity continuum. *Curr Opin Cardiol*. 2016;31(5):566–71.
7. Plasqui G, Bonomi AG, Westerterp KR. Daily physical activity assessment with accelerometers: new insights and validation studies. *Obes Rev*. 2013; 14(6):451–62.
8. van Poppel MN, Chinapaw MJ, Mokkink LB, van Mechelen W, Terwee CB. Physical activity questionnaires for adults: a systematic review of measurement properties. *Sports Med*. 2010;40(7):565–600.
9. Sedentary Behaviour Research N. Letter to the editor: standardized use of the terms "sedentary" and "sedentary behaviours". *Appl Physiol Nutr Metab*. 2012;37(3):540–2.
10. Tremblay MS, Aubert S, Barnes JD, Saunders TJ, Carson V, Latimer-Cheung AE, et al. Sedentary behavior Research network (SBRN) - terminology consensus project process and outcome. *Int J Behav Nutr Phys Act*. 2017; 14(1):75.
11. Byrom B, Stratton G, Mc Carthy M, Muehlhausen W. Objective measurement of sedentary behaviour using accelerometers. *Int J Obes*. 2016;40(11):1809–12.
12. Hu FB, Li TY, Colditz GA, Willett WC, Manson JE. Television watching and other sedentary behaviors in relation to risk of obesity and type 2 diabetes mellitus in women. *JAMA*. 2003;289(14):1785–91.
13. Kim Y, Wilkens LR, Park SY, Goodman MT, Monroe KR, Kolonel LN. Association between various sedentary behaviours and all-cause, cardiovascular disease and cancer mortality: the multiethnic cohort study. *Int J Epidemiol*. 2013;42(4):1040–56.
14. Ekelund U, Steene-Johannessen J, Brown WJ, Fagerland MW, Owen N, Powell KE, et al. Does physical activity attenuate, or even eliminate, the detrimental association of sitting time with mortality? A harmonised meta-analysis of data from more than 1 million men and women. *Lancet*. 2016; 388(10051):1302–10.
15. Healy GN, Clark BK, Winkler EA, Gardiner PA, Brown WJ, Matthews CE. Measurement of adults' sedentary time in population-based studies. *Am J Prev Med*. 2011;41(2):216–27.
16. Dall PM, Coulter EH, Fitzsimons CF, Skelton DA, Chastin S, Seniors USPT. Taxonomy of self-reported Sedentary behaviour tools (TASST) framework for development, comparison and evaluation of self-report tools: content analysis and systematic review. *BMJ Open*. 2017;7(4):e013844.
17. Lopez-Rodriguez C, Laguna M, Gomez-Cabello A, Gusi N, Espino L, Villa G, et al. Validation of the self-report EXERNET questionnaire for measuring physical activity and sedentary behavior in elderly. *Archives of Gerontology & Geriatrics*. 2017;69:156–61.
18. Laeremans M, Dons E, Avila-Palencia I, Carrasco-Turigas G, Orjuela JP, Anaya E, et al. Physical activity and sedentary behaviour in daily life: A comparative analysis of the Global Physical Activity Questionnaire (GPAQ) and the SenseWear armband. *PLoS ONE [Electronic Resource]*. 2017;12(5):e0177765.
19. Wanner M, Hartmann C, Pestoni G, Martin BW, Siegrist M, Martin-Diener E. Validation of the global physical activity questionnaire for self-administration in a European context. *BMJ Open Sport Exerc Med*. 2017;3(1): e000206.
20. Cleland CL, Hunter RF, Kee F, Cupples ME, Sallis JF, Tully MA. Validity of the global physical activity questionnaire (GPAQ) in assessing levels and change

- in moderate-vigorous physical activity and sedentary behaviour. *BMC Public Health*. 2014;14:1255.
21. Chu AHY, Ng SHX, Koh D, Muller-Riemenschneider F. Domain-specific adult sedentary behaviour questionnaire (ASBQ) and the GPAQ single-item question: A reliability and validity study in an Asian population. *International Journal of Environmental Research and Public Health*. 2018;15 (4) (no pagination)(739).
 22. Metcalfe KM, Baquero BI, Coronado Garcia ML, Francis SL, Janz KF, Laroche HH, et al. Calibration of the global physical activity questionnaire to Accelerometry measured physical activity and sedentary behavior. *BMC Public Health*. 2018;18(1):412.
 23. Rudolf K, Lammer F, Stassen G, Frobose I, Schaller A. Show cards of the global physical activity questionnaire (GPAQ) - do they impact validity? A crossover study. *BMC Public Health*. 2020;20(1):223.
 24. Kastelic K, Sarabon N. Comparison of self-reported Sedentary time on weekdays with an objective measure (activPAL). *Meas Phys Educ Exerc Sci*. 2019;23(3):227–36.
 25. Wanner M, Probst-Hensch N, Kriemler S, Meier F, Autenrieth C, Martin BW. Validation of the long international physical activity questionnaire: influence of age and language region. *Prev Med Rep*. 2016;3:250–6.
 26. Craig CL, Marshall AL, Sjoström M, Bauman AE, Booth ML, Ainsworth BE, et al. International physical activity questionnaire: 12-country reliability and validity. *Med Sci Sports Exerc*. 2003;35(8):1381–95.
 27. Chastin SF, Culhane B, Dall PM. Comparison of self-reported measure of sitting time (IPAQ) with objective measurement (activPAL). *Physiol Meas*. 2014;35(11):2319–28.
 28. Chau JY, Van Der Ploeg HP, Dunn S, Kurko J, Bauman AE. Validity of the occupational sitting and physical activity questionnaire. *Med Sci Sports Exerc*. 2012;44(1):118–25.
 29. Simpson K, Parker B, Capizzi J, Thompson P, Clarkson P, Freedson P, et al. Validity and reliability of question 8 of the Paffenbarger physical activity questionnaire among healthy adults. *J Phys Act Health*. 2015;12(1):116–23.
 30. Larsson K, Kallings LV, Ekblom O, Blom V, Andersson E, Ekblom MM. Criterion validity and test-retest reliability of SED-GIH, a single item question for assessment of daily sitting time. *BMC Public Health*. 2019;19(1):17.
 31. Chastin SFM, Dontje ML, Skelton DA, Cukic I, Shaw RJ, Gill JMR, et al. Systematic comparative validation of self-report measures of sedentary time against an objective measure of postural sitting (activPAL). *International Journal of Behavioral Nutrition & Physical Activity*. 2018;15(1):21.
 32. Aguilar-Farías N, Brown WJ, Olds TS, Geeske Peeters GM. Validity of self-report methods for measuring sedentary behaviour in older adults. *Journal of Science & Medicine in Sport*. 2015;18(6):662–6.
 33. Clemes SA, David BM, Zhao Y, Han X, Brown W. Validity of two self-report measures of sitting time. *J Phys Act Health*. 2012;9(4):533–9.
 34. Dontje ML, Dall PM, Skelton DA, Gill JMR, Chastin SFM. Reliability, minimal detectable change and responsiveness to change: Indicators to select the best method to measure sedentary behaviour in older adults in different study designs. *PLoS ONE*. 2018;13 (4) (no pagination)(e0195424).
 35. Kozey-Keadle S, Libertine A, Staudenmayer J, Freedson P. The feasibility of reducing and measuring Sedentary time among overweight. Non-Exercising Office Workers *Journal of Obesity*. 2012;2012:282303.
 36. Gennuso KP, Matthews CE, Colbert LH. Reliability and validity of 2 self-report measures to assess Sedentary behavior in older adults. *J Phys Act Health*. 2015;12(5):727–32.
 37. Gupta N, Christiansen CS, Hanisch C, Bay H, Burr H, Holtermann A. Is questionnaire-based sitting time inaccurate and can it be improved? A cross-sectional investigation using accelerometer-based sitting time. *BMJ Open*. 2017;7(1):e013251.
 38. Chinapaw MJ, Sloopmaker SM, Schuit AJ, van Zuidam M, van Mechelen W. Reliability and validity of the activity questionnaire for adults and adolescents (AQuAA). *BMC Med Res Methodol*. 2009;9:58.
 39. Rees-Punia E, Matthews CE, Evans EM, Keadle SK, Anderson RL, Gay JL, et al. Demographic-specific validity of the Cancer prevention Study-3 Sedentary time survey. *Med Sci Sports Exerc*. 2019;51(1):41–8.
 40. Hekler EB, Buman MP, Haskell WL, Conway TL, Cain KL, Sallis JF, et al. Reliability and validity of CHAMPS self-reported sedentary-to-vigorous intensity physical activity in older adults. *J Phys Act Health*. 2012;9(2): 225–36.
 41. Matton L, Wijndaele K, Duvigneaud N, Duquet W, Philippaerts R, Thomis M, et al. Reliability and validity of the Flemish physical activity computerized questionnaire in adults. *Research Quarterly for Exercise & Sport*. 2007;78(4): 293–306.
 42. Scheers T, Philippaerts R, Lefevre J. Assessment of physical activity and inactivity in multiple domains of daily life: a comparison between a computerized questionnaire and the SenseWear armband complemented with an electronic diary. *International Journal of Behavioral Nutrition & Physical Activity*. 2012;9:71.
 43. Prince SA, Reid RD, Bernick J, Clarke AE, Reed JL. Single versus multi-item self-assessment of sedentary behaviour: a comparison with objectively measured sedentary time in nurses. *Journal of Science & Medicine in Sport*. 2018;08:08.
 44. Rosenberg DE, Bull FC, Marshall AL, Sallis JF, Bauman AE. Assessment of sedentary behavior with the international physical activity questionnaire. *J Phys Act Health*. 2008;5(Suppl 1):S30–44.
 45. Kozey Keadle S, Lyden K, Hickey A, Ray EL, Fowke JH, Freedson PS, et al. Validation of a previous day recall for measuring the location and purpose of active and sedentary behaviors compared to direct observation. *International Journal of Behavioral Nutrition & Physical Activity*. 2014;11:12.
 46. Ferguson S, Ellis G, Hunter RF. Validity of the international physical activity questionnaire (IPAQ) for assessing moderate-to-vigorous physical activity and sedentary behaviour of older adults in the United Kingdom. *BMC Med Res Methodol*. 2018;18(1):176.
 47. Ryan DJ, Wullems JA, Stebbings GK, Morse CI, Stewart CE, Onambele-Pearson GL. Reliability and validity of the international physical activity questionnaire compared to calibrated accelerometer cut-off points in the quantification of sedentary behaviour and physical activity in older adults. *PLoS ONE*. 2018;13 (4) (no pagination)(e0195712).
 48. Reis JP, Durbose KD, Ainsworth BE, Macera CA, Yore MM. Reliability and validity of the occupational physical activity questionnaire. *Med Sci Sports Exerc*. 2005;37(12):2075–83.
 49. Pedersen SJ, Kitic CM, Bird ML, Mainsbridge CP, Cooley PD. Is self-reporting workplace activity worthwhile? Validity and reliability of occupational sitting and physical activity questionnaire in desk-based workers. *BMC Public Health*. 2016;16(1):836.
 50. van Nassau F, Chau JY, Lakerveld J, Bauman AE, van der Ploeg HP. Validity and responsiveness of four measures of occupational sitting and standing. *International Journal of Behavioral Nutrition & Physical Activity*. 2015;12:144.
 51. Jancey J, Tye M, McGann S, Blackford K, Lee AH. Application of the occupational sitting and physical activity questionnaire (OSPAQ) to office based workers. *BMC Public Health*. 2014;14:762.
 52. Pedersen ESL, Mortensen LH, Brage S, Bjerregaard AL, Aadahl M. Criterion validity of the physical activity scale (PAS2) in Danish adults. *Scandinavian Journal of Public Health*. 2017;1403494817738470.
 53. Scholes S, Coombs N, Pedisic Z, Mindell JS, Bauman A, Rowlands AV, et al. Age- and sex-specific criterion validity of the health survey for England physical activity and Sedentary behavior assessment questionnaire as compared with accelerometry. *Am J Epidemiol*. 2014;179(12):1493–502.
 54. Fowles JR, O'Brien MW, Wojcik WR, d'Entremont L, Shields CA. A pilot study: validity and reliability of the CSEP-PATH PASB-Q and a new leisure time physical activity questionnaire to assess physical activity and sedentary behaviours. *Applied physiology, nutrition, & metabolism = Physiologie Appliquee. Nutrition et Metabolisme*. 2017;42(6):677–80.
 55. Clark BK, Pavey TG, Lim RF, Gomersall SR, Brown WJ. Past-day recall of sedentary time: validity of a self-reported measure of sedentary time in a university population. *Journal of Science & Medicine in Sport*. 2016;19(3): 237–41.
 56. Yi SS, Bartley KF, Firestone MJ, Lee KK, Eisenhower DL. Self-reported sitting time in New York City adults, the physical activity and transit survey, 2010–2011. *Prev Chronic Dis*. 2015;12:E85.
 57. Golubic R, May AM, Benjaminsen Borch K, Overvad K, Charles MA, Diaz MJ, et al. Validity of electronically administered Recent Physical Activity Questionnaire (RPAQ) in ten European countries. [Erratum appears in *PLoS One*. 2014;9(11):e114103]. *PLoS ONE [Electronic Resource]*. 2014;9(3):e92829.
 58. Besson H, Brage S, Jakes RW, Ekelund U, Wareham NJ. Estimating physical activity energy expenditure, sedentary time, and physical activity intensity by self-report in adults. *Am J Clin Nutr*. 2010;91(1):106–14.
 59. Molina L, Sarmiento M, Penafiel J, Donaire D, Garcia-Aymerich J, Gomez M, et al. Validation of the Regicor Short Physical Activity Questionnaire for the Adult Population. *PLoS ONE [Electronic Resource]*. 2017;12(1):e0168148.
 60. Buchowski MS, Matthews CE, Cohen SS, Signorello LB, Fowke JH, Hargreaves MK, et al. Evaluation of a questionnaire to assess sedentary and active

- behaviors in the southern community cohort study. *J Phys Act Health*. 2012; 9(6):765–75.
61. Pedisic Z, Bennie JA, Timperio AF, Crawford DA, Dunstan DW, Bauman AE, et al. Workplace sitting breaks questionnaire (SITBRQ): an assessment of concurrent validity and test-retest reliability. *BMC Public Health*. 2014;14: 1249.
 62. Gardiner PA, Clark BK, Healy GN, Eakin EG, Winkler EA, Owen N. Measuring older adults' sedentary time: reliability, validity, and responsiveness. *Med Sci Sports Exerc*. 2011;43(11):2127–33.
 63. Mensah K, Maire A, Oppert JM, Dugas J, Charreire H, Weber C, et al. Assessment of sedentary behaviors and transport-related activities by questionnaire: a validation study. *BMC Public Health*. 2016;16:753.
 64. Gennuso KP, Thraen-Borowski KM, Gangnon RE, Colbert LH. Patterns of sedentary behavior and physical function in older adults. *Aging-Clinical & Experimental Research*. 2016;28(5):943–50.
 65. Bonn SE, Bergman P, Trolle Lagerros Y, Sjolander A, Balter K. A validation study of the web-based physical activity questionnaire active-Q against the GENEa accelerometer. *JMIR Research Protocols*. 2015;4(3):e86.
 66. Matsuo T, Sasai H, So R, Ohkawara K. Percentage-method improves properties of Workers' sitting- and walking-time questionnaire. *Journal of Epidemiology*. 2016;26(8):405–12.
 67. Clark BK, Thorp AA, Winkler EA, Gardiner PA, Healy GN, Owen N, et al. Validity of self-reported measures of workplace sitting time and breaks in sitting time. *Med Sci Sports Exerc*. 2011;43(10):1907–12.
 68. Jefferis BJ, Sartini C, Ash S, Lennon LT, Wannamethee SG, Whincup PH. Validity of questionnaire-based assessment of sedentary behaviour and physical activity in a population-based cohort of older men; comparisons with objectively measured physical activity data. *International Journal of Behavioral Nutrition & Physical Activity*. 2016;13:14.
 69. Lagersted-Olsen J, Korshoj M, Skotte J, Carneiro IG, Sogaard K, Holtermann A. Comparison of objectively measured and self-reported time spent sitting. *Int J Sports Med*. 2014;35(6):534–40.
 70. Mielke GI, Crochemore M da Silva I, Gomersall SR, Owen N, Hallal PC. Reliability of a multi-domain sedentary behaviour questionnaire and comparability to an overall sitting time estimate. *J Sports Sci* 2020;38(3): 351–356.
 71. Sudholz B, Ridgers ND, Mussap A, Bennie J, Timperio A, Salmon J. Reliability and validity of self-reported sitting and breaks from sitting in the workplace. *Journal of Science & Medicine in Sport*. 2017;07:07.
 72. Cartmel B, Moon TE. Comparison of two physical activity questionnaires, with a diary, for assessing physical activity in an elderly population. *J Clin Epidemiol*. 1992;45(8):877–83.
 73. Anjana RM, Sudha V, Lakshmpriya N, Subhashini S, Pradeepa R, Geetha L, et al. Reliability and validity of a new physical activity questionnaire for India. *International Journal of Behavioral Nutrition & Physical Activity*. 2015; 12:40.
 74. Whitfield GP, Gabriel KK, Kohl HW 3rd. Assessing sitting across contexts: development of the multicontext sitting time questionnaire. *Research Quarterly for Exercise & Sport*. 2013;84(3):323–8.
 75. Verhoog S, Gubelmann C, Guessous I, Bano A, Franco OH, Marques-Vidal P. Comparison of the physical activity frequency questionnaire (PAFQ) with accelerometry in a middle-aged and elderly population: the CoLaus study. *Maturitas*. 2019;129:68–75.
 76. Moulin MS, Lee CJ, Tucker P, Prapavessis H, Irwin JD. Weekly recall of sedentary time: validity of 2 weekly self-reported measures in undergraduate students. *Translational Sports Medicine*. 2020;3(2):127–33.
 77. Rosenberg DE, Norman GJ, Wagner N, Patrick K, Calfas KJ, Sallis JF. Reliability and validity of the Sedentary behavior questionnaire (SBQ) for adults. *J Phys Act Health*. 2010;7(6):697–705.
 78. Lynch BM, Friedenreich CM, Khandwala F, Liu A, Nicholas J, Cszmadi I. Development and testing of a past year measure of sedentary behavior: the SIT-Q. *BMC Public Health*. 2014;14:899.
 79. Busschaert C, De Bourdeaudhuij I, Van Holle V, Chastin SF, Cardon G, De Cocker K. Reliability and validity of three questionnaires measuring context-specific sedentary behaviour and associated correlates in adolescents, adults and older adults. *International Journal of Behavioral Nutrition & Physical Activity*. 2015;12:117.
 80. Wijnndaele K, De Bourdeaudhuij I, Godino JG, Lynch BM, Griffin SJ, Westgate K, et al. Reliability and validity of a domain-specific last 7-d Sedentary time questionnaire. *Med Sci Sports Exerc*. 2014;46(6):1248–60.
 81. Cszmadi I, Neilson HK, Kopciuk KA, Khandwala F, Liu A, Friedenreich CM, et al. The Sedentary time and activity reporting questionnaire (STAR-Q): reliability and validity against doubly labeled water and 7-day activity diaries. *Am J Epidemiol*. 2014;180(4):424–35.
 82. Chau JY, van der Ploeg HP, Dunn S, Kurko J, Bauman AE. A tool for measuring workers' sitting time by domain: the workforce sitting questionnaire. *Br J Sports Med*. 2011;45(15):1216–22.
 83. Toledo MJL, Mullane SL, Larouche ML, Rydell SA, Mitchell NR, Pereira MA, et al. Stand and Move at Work sedentary behavior questionnaire: validity and sensitivity to change. *Annals of Epidemiology*. 2019;31:62–8.e1.
 84. Clark BK, Lynch BM, Winkler EA, Gardiner PA, Healy GN, Dunstan DW, et al. Validity of a multi-context sitting questionnaire across demographically diverse population groups: AusDiab3. *International Journal of Behavioral Nutrition & Physical Activity*. 2015;12:148.
 85. Ishii K, Shibata A, Kurita S, Yano S, Inoue S, Sugiyama T, et al. Validity and reliability of Japanese-language self-reported measures for assessing adult domain-specific Sedentary time. *Journal of epidemiology*. 2018;28(3):149–55.
 86. Marshall AL, Miller YD, Burton NW, Brown WJ. Measuring total and domain-specific sitting: a study of reliability and validity. *Med Sci Sports Exerc*. 2010; 42(6):1094–102.
 87. Van Cauwenberg J, Van Holle V, De Bourdeaudhuij I, Owen N, Deforche B. Older adults' reporting of specific sedentary behaviors: validity and reliability. *BMC Public Health*. 2014;14:734.
 88. Visser M, Koster A. Development of a questionnaire to assess sedentary time in older persons—a comparative study using accelerometry. *BMC Geriatr*. 2013;13:80.
 89. Barwais FA, Cuddihy TF, Washington T, Tomson LM, Brymer E. Development and validation of a new self-report instrument for measuring sedentary behaviors and light-intensity physical activity in adults. *J Phys Act Health*. 2014;11(6):1097–104.
 90. Hart TL, Ainsworth BE, Tudor-Locke C. Objective and subjective measures of sedentary behavior and physical activity. *Med Sci Sports Exerc*. 2011;43(3): 449–56.
 91. Toledo MJ, Hekler E, Hollingshead K, Epstein D, Buman M. Validation of a smartphone app for the assessment of Sedentary and active behaviors. *JMIR MHealth and UHealth*. 2017;5(8):e119.
 92. Kohler S, Behrens G, Olden M, Baumeister SE, Horsch A, Fischer B, et al. Design and evaluation of a computer-based 24-hour physical activity recall (cpar24) instrument. *J Med Internet Res*. 2017;19(5):e186.
 93. Knell G, Gabriel KP, Businelle MS, Shuval K, Wetter DW, Kendzor DE. Ecological momentary assessment of physical activity: validation study. *J Med Internet Res*. 2017;19(7):e253.
 94. Gomersall SR, Pavey TG, Clark BK, Jasman A, Brown WJ. Validity of a self-report recall tool for estimating Sedentary behavior in adults. *J Phys Act Health*. 2015;12(11):1485–91.
 95. Kim Y, Welk GJ. The accuracy of the 24-h activity recall method for assessing sedentary behaviour: the physical activity measurement survey (PAMS) project. *J Sports Sci*. 2017;35(3):255–61.
 96. van der Ploeg HP, Merom D, Chau JY, Bittman M, Trost SG, Bauman AE. Advances in population surveillance for physical activity and sedentary behavior: reliability and validity of time use surveys. *Am J Epidemiol*. 2010; 172(10):1199–206.
 97. Matthews CE, Keadle SK, Sampson J, Lyden K, Bowles HR, Moore SC, et al. Validation of a previous-day recall measure of active and sedentary behaviors. *Med Sci Sports Exerc*. 2013;45(8):1629–38.
 98. Liberati A, Altman DG, Tetzlaff J, Mulrow C, Gotzsche PC, Ioannidis JP, et al. The PRISMA statement for reporting systematic reviews and meta-analyses of studies that evaluate healthcare interventions: explanation and elaboration. *BMJ*. 2009;339:b2700.
 99. Mokkink LB, Terwee CB, Knol DL, Stratford PW, Alonso J, Patrick DL, et al. The COSMIN checklist for evaluating the methodological quality of studies on measurement properties: a clarification of its content. *BMC Med Res Methodol*. 2010;10:22.
 100. Mokkink LB, Terwee CB, Patrick DL, Alonso J, Stratford PW, Knol DL, et al. The COSMIN checklist for assessing the methodological quality of studies on measurement properties of health status measurement instruments: an international Delphi study. *Qual Life Res*. 2010;19(4):539–49.
 101. Terwee CB, Mokkink LB, Knol DL, Ostelo RW, Bouter LM, de Vet HC. Rating the methodological quality in systematic reviews of studies on measurement properties: a scoring system for the COSMIN checklist. *Qual Life Res*. 2012;21(4):651–7.

102. Gao Y, Cronin NJ, Nevala N, Finni T. Journal of Sport and Health Science: Validity of long-term and short-term recall of occupational sitting time in Finnish and Chinese office workers; 2017.
103. HCW de Vet CT, LB Mokkink, DL Knol. Measurement in Medicine : A Practical Guide. Cambridge: Cambridge University Press; 2011.
104. Atkin AJ, Gorely T, Clemes SA, Yates T, Edwardson C, Brage S, et al. Methods of measurement in epidemiology: sedentary Behaviour. *Int J Epidemiol.* 2012;41(5):1460–71.
105. Koo TK, Li MY. A guideline of selecting and reporting Intraclass correlation coefficients for reliability Research. *J Chiropr Med.* 2016;15(2):155–63.
106. Haddock S. Analyzing effect sizes: Fixed-effects models. *The handbook of research synthesis and meta analysis*: New York: Russell Sage Foundation; 2009. p. pp. 257–78.
107. Yang L, Cao C, Kantor ED, Nguyen LH, Zheng X, Park Y, et al. Trends in Sedentary behavior among the US population, 2001–2016. *JAMA.* 2019; 321(16):1587–97.
108. Ng SW, Popkin BM. Time use and physical activity: a shift away from movement across the globe. *Obes Rev.* 2012;13(8):659–80.

Publisher's Note

Springer Nature remains neutral with regard to jurisdictional claims in published maps and institutional affiliations.

Ready to submit your research? Choose BMC and benefit from:

- fast, convenient online submission
- thorough peer review by experienced researchers in your field
- rapid publication on acceptance
- support for research data, including large and complex data types
- gold Open Access which fosters wider collaboration and increased citations
- maximum visibility for your research: over 100M website views per year

At BMC, research is always in progress.

Learn more biomedcentral.com/submissions

