

University of Massachusetts Medical School  
eScholarship@UMMS

---

New England Graphic Medicine Conference

2020 NEGM Conference

---

Mar 28th, 9:30 AM

## Who's in the Room?

Cathy Leamy

Let us know how access to this document benefits you.

Follow this and additional works at: <https://escholarship.umassmed.edu/negm>



Part of the [Medical Humanities Commons](#)

---

### Repository Citation

Leamy C. (2020). Who's in the Room?. New England Graphic Medicine Conference. Retrieved from <https://escholarship.umassmed.edu/negm/2020/program/4>

This material is brought to you by eScholarship@UMMS. It has been accepted for inclusion in New England Graphic Medicine Conference by an authorized administrator of eScholarship@UMMS. For more information, please contact [Lisa.Palmer@umassmed.edu](mailto:Lisa.Palmer@umassmed.edu).

# Who's in the room?

New England Graphic Medicine Conference, March 2020

---

Cathy Leamy • [www.metrokitty.com](http://www.metrokitty.com) • Twitter: [@metrokitty](https://twitter.com/metrokitty)



GOOD <sup>♪</sup>  
MORNING!

THANK YOU FOR  
CALLING THE  
KIDNEY  
CLINIC!

THIS <sup>♪</sup>  
IS  
CATHY!

get your  
flu shot!  
<sup>♪</sup>

LITTLE BITTY  
GREAT  
BIG  
BARRIERS  
TO  
HEALTHCARE



CATHY LEAMY 



Who's in the room?



# What I'll cover

1. Portrayal in graphic medicine publications
2. Participation in the graphic medicine community

# Portrayal



Quantitative!







# Which comics to examine?

- Comics format - not text with spot illustrations
- It's about a health condition
- It's about a healthcare worker
- It takes place in a healthcare setting
- Would I put this on a shelf of graphic medicine comics?
- Would it fit in at the graphic medicine conference marketplace?

# How many comics total?

- 68 books
- 13 health ed publications
- 11 pamphlet-style comics (“floppies”)
- 70 minis

**Total: 162**

# What data to collect?

- For each publication:
  - Number of pages
  - Number of panels
- For each character in that publication:
  - Role
  - Name (if given)
  - Appearance - number of panels
  - Dialogue - number of panels

Ow! That's a wall!

PAGES: 84

PANELS: 333

THE LONG ROAD HOME

MAIN CHAR - 8.0.  
LT.

|||||  
|||||

|||||  
|||||

PART-TIME  
NANNY/  
FAMILY FRIEND - ZONKOR

17  
|||||  
|||||

75. MURDER - JAY (1, 1)  
BEHAVIORAL MURKIN (1, 1)

76. MURDER, DRUNK (1, 1)

18  
WIFE - BOOPSE - mes. 0  
|||||  
|||||

77. SOMEONE FROM WALTER KOPF/  
FISHER HOUSE - MURDER? SPACE?  
(4, 4)

|||||

78. DOCTOR (1, 2)  
MURDER (7, 6)

DAUGHTER - SAM

|||||  
|||||

82. PHYSICAL MURKIN (8, 8)

Wow! That's a plateau!

# Quantitative: 48 comics examined

- 9 books
  - 6 memoir, 3 fiction
- 11 health ed publications
- 6 pamphlet-style comics (“floppies”)
  - 5 memoir, 1 fiction
- 23 minis
  - 22 non-fiction/memoir
  - 1 fiction



PAGES: 39 (of course) PAGES: 301

ROLE	PRICE	PAID AMT	PAID BAL
WASH CAR	MEMO	204	103
WASH ADMIN			
DRIVER	DR. SHAWNET	5	5
DRIVER			
DRIVER		44	28
DRIVER		37	26
DRIVER (S)			
DRIVER		10	9
DRIVER		4	5
DRIVER		5	5
DRIVER		5	5
DRIVER		2	2
DRIVER		7	7
DRIVER		2	2
DRIVER		5	4
DRIVER		1	1
DRIVER		8	8
DRIVER		4	6
DRIVER		5	6
DRIVER		26	12
DRIVER		3	3
DRIVER		4	3
DRIVER		2	1
DRIVER		2	1
DRIVER		8	12
DRIVER		2	2
DRIVER		2	1
DRIVER		3	1
DRIVER		1	1

PAGES: 32 PAGES: 84 BEYOND THE SCENE

JANE - ASSISTANT, SHIRT  
 JANE'S ASSISTANT (1,1)  
 JANE'S ASSISTANT (0,7)  
 JANE'S ASSISTANT (4,7)  
 JANE'S ASSISTANT (8,8)  
 JANE'S ASSISTANT (3,2)  
 JANE'S ASSISTANT (4,5)  
 JANE'S ASSISTANT (2,1)  
 JANE'S ASSISTANT (5,2)  
 JANE'S ASSISTANT (4,1)  
 JANE'S ASSISTANT (4,3)

DR - NO SURVIVE  
 DR - NO SURVIVE (1,1)  
 DR - NO SURVIVE (2,1)  
 DR - NO SURVIVE (3,1)  
 DR - NO SURVIVE (4,1)  
 DR - NO SURVIVE (5,1)  
 DR - NO SURVIVE (6,1)  
 DR - NO SURVIVE (7,1)  
 DR - NO SURVIVE (8,1)  
 DR - NO SURVIVE (9,1)  
 DR - NO SURVIVE (10,1)  
 DR - NO SURVIVE (11,1)  
 DR - NO SURVIVE (12,1)  
 DR - NO SURVIVE (13,1)  
 DR - NO SURVIVE (14,1)  
 DR - NO SURVIVE (15,1)  
 DR - NO SURVIVE (16,1)  
 DR - NO SURVIVE (17,1)  
 DR - NO SURVIVE (18,1)  
 DR - NO SURVIVE (19,1)  
 DR - NO SURVIVE (20,1)

PAGES: 30 PAGES: 91 ANY GUES

STAGE 1 - [unclear] (1,2)  
 STAGE 2 - [unclear] (2,2)  
 STAGE 3 - [unclear] (3,2)  
 STAGE 4 - [unclear] (4,2)  
 STAGE 5 - [unclear] (5,2)  
 STAGE 6 - [unclear] (6,2)  
 STAGE 7 - [unclear] (7,2)  
 STAGE 8 - [unclear] (8,2)  
 STAGE 9 - [unclear] (9,2)  
 STAGE 10 - [unclear] (10,2)  
 STAGE 11 - [unclear] (11,2)  
 STAGE 12 - [unclear] (12,2)  
 STAGE 13 - [unclear] (13,2)  
 STAGE 14 - [unclear] (14,2)  
 STAGE 15 - [unclear] (15,2)  
 STAGE 16 - [unclear] (16,2)  
 STAGE 17 - [unclear] (17,2)  
 STAGE 18 - [unclear] (18,2)  
 STAGE 19 - [unclear] (19,2)  
 STAGE 20 - [unclear] (20,2)

PAGES: 84 PAGES: 333 THE LONG GALS HOME

MAIN CHAIR - 8.0  
 MAIN CHAIR (1,1)  
 MAIN CHAIR (2,1)  
 MAIN CHAIR (3,1)  
 MAIN CHAIR (4,1)  
 MAIN CHAIR (5,1)  
 MAIN CHAIR (6,1)  
 MAIN CHAIR (7,1)  
 MAIN CHAIR (8,1)  
 MAIN CHAIR (9,1)  
 MAIN CHAIR (10,1)  
 MAIN CHAIR (11,1)  
 MAIN CHAIR (12,1)  
 MAIN CHAIR (13,1)  
 MAIN CHAIR (14,1)  
 MAIN CHAIR (15,1)  
 MAIN CHAIR (16,1)  
 MAIN CHAIR (17,1)  
 MAIN CHAIR (18,1)  
 MAIN CHAIR (19,1)  
 MAIN CHAIR (20,1)

PAGES: 38 PAGES: 117 BOTS NOT IN THESE BOTTLES

WASH CAR (1,1)  
 WASH CAR (2,1)  
 WASH CAR (3,1)  
 WASH CAR (4,1)  
 WASH CAR (5,1)  
 WASH CAR (6,1)  
 WASH CAR (7,1)  
 WASH CAR (8,1)  
 WASH CAR (9,1)  
 WASH CAR (10,1)  
 WASH CAR (11,1)  
 WASH CAR (12,1)  
 WASH CAR (13,1)  
 WASH CAR (14,1)  
 WASH CAR (15,1)  
 WASH CAR (16,1)  
 WASH CAR (17,1)  
 WASH CAR (18,1)  
 WASH CAR (19,1)  
 WASH CAR (20,1)

PAGES: 75 PAGES: 210 PLEASE CAPITAL LETTER AND UNDERLINE FIRST

STAGE 1 - [unclear] (1,1)  
 STAGE 2 - [unclear] (2,1)  
 STAGE 3 - [unclear] (3,1)  
 STAGE 4 - [unclear] (4,1)  
 STAGE 5 - [unclear] (5,1)  
 STAGE 6 - [unclear] (6,1)  
 STAGE 7 - [unclear] (7,1)  
 STAGE 8 - [unclear] (8,1)  
 STAGE 9 - [unclear] (9,1)  
 STAGE 10 - [unclear] (10,1)  
 STAGE 11 - [unclear] (11,1)  
 STAGE 12 - [unclear] (12,1)  
 STAGE 13 - [unclear] (13,1)  
 STAGE 14 - [unclear] (14,1)  
 STAGE 15 - [unclear] (15,1)  
 STAGE 16 - [unclear] (16,1)  
 STAGE 17 - [unclear] (17,1)  
 STAGE 18 - [unclear] (18,1)  
 STAGE 19 - [unclear] (19,1)  
 STAGE 20 - [unclear] (20,1)

# Sidebar

# Visual shorthand and iconography

- Lab coat and clipboard
- White nurse cap
- Stethoscope around the neck
- Sitting behind a desk
- Man in short sleeve scrubs pushing a wheelchair



# Visual shorthand pitfalls

- Non-doctors can wear labcoats
- Lots of health professionals wear scrubs
- Non-specific coding: “Clinician”, “Clinic staff in scrubs”
- Review by healthcare subject matter expert



## Style challenges



# Character coding

- Handsome drink server
- Staff who came running
- Peppy classmate
- Donut/person
- Cartoonist with upset stomach
- *Home Alone* Macaulay Culkin
- Personified symptom (headache)
- Smoochy photo boy
- Mean nurse
- Manifestation of pancreas mass
- Tooth
- God



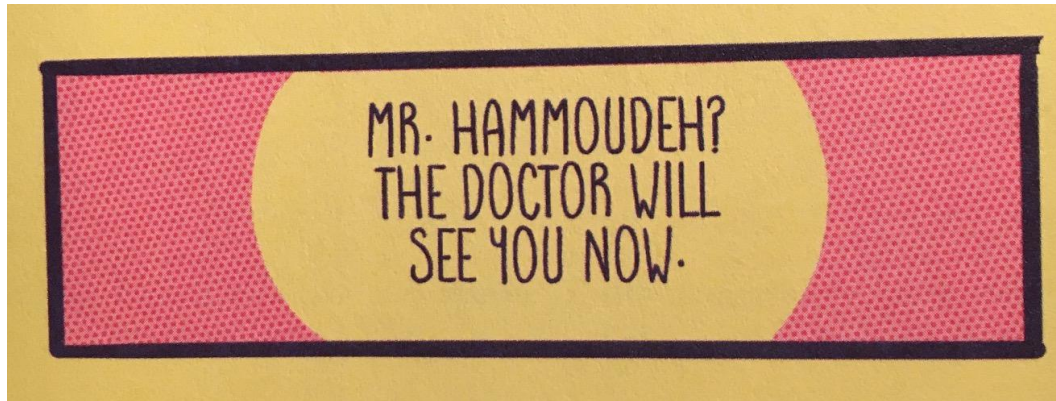
**Qualitative!**

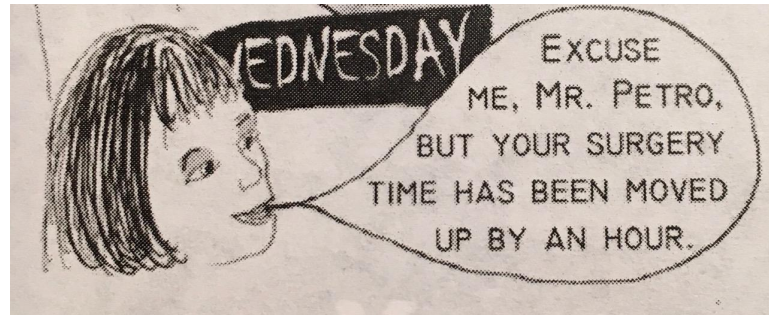
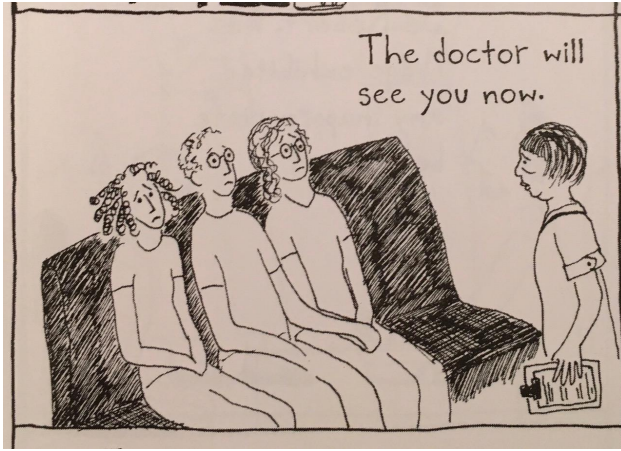
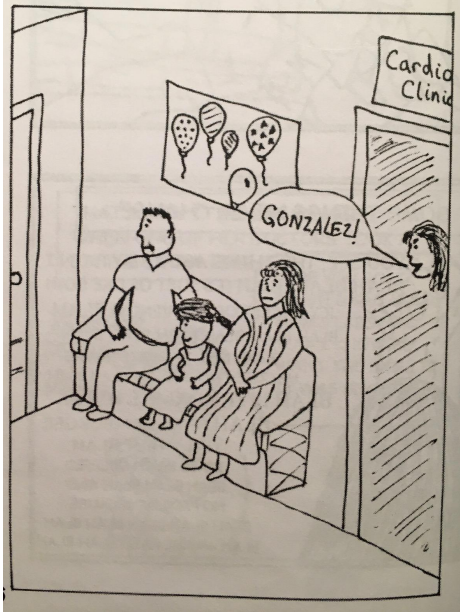
Out of 162 comics ...



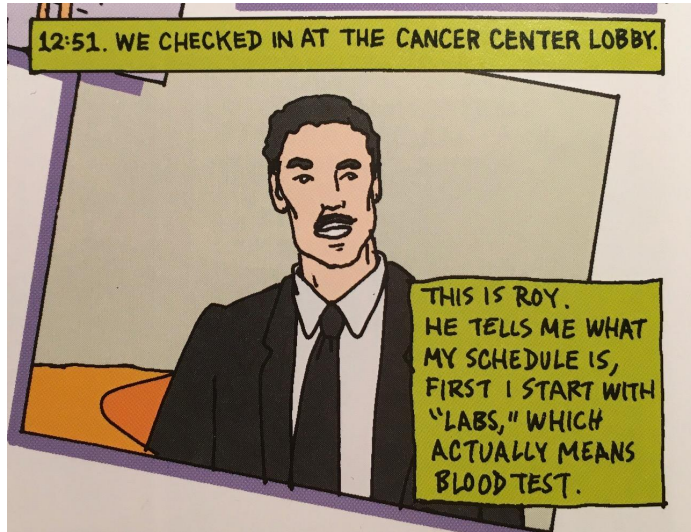








# Cancer Vixen—Marisa Acocella Marchetto



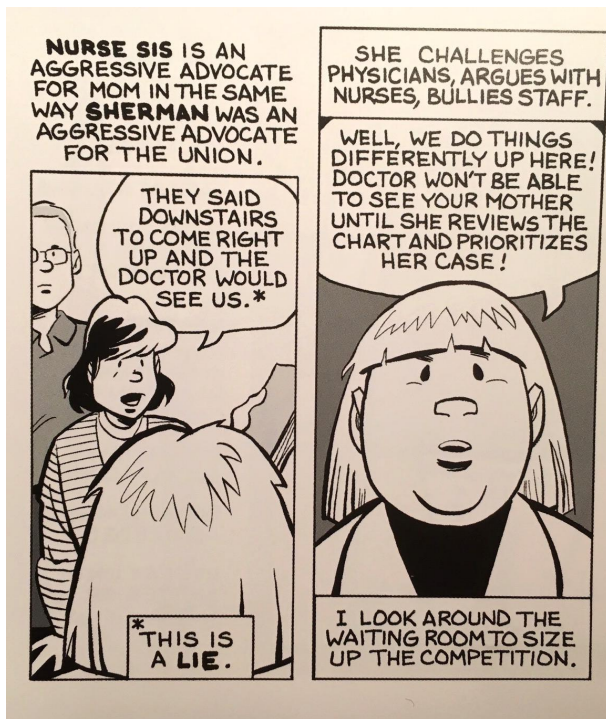
# Back, Sack, & Crack (& Brain)—Robert Wells



## Drinking at the Movies—Julia Wertz



# Mom's Cancer—Brian Fies

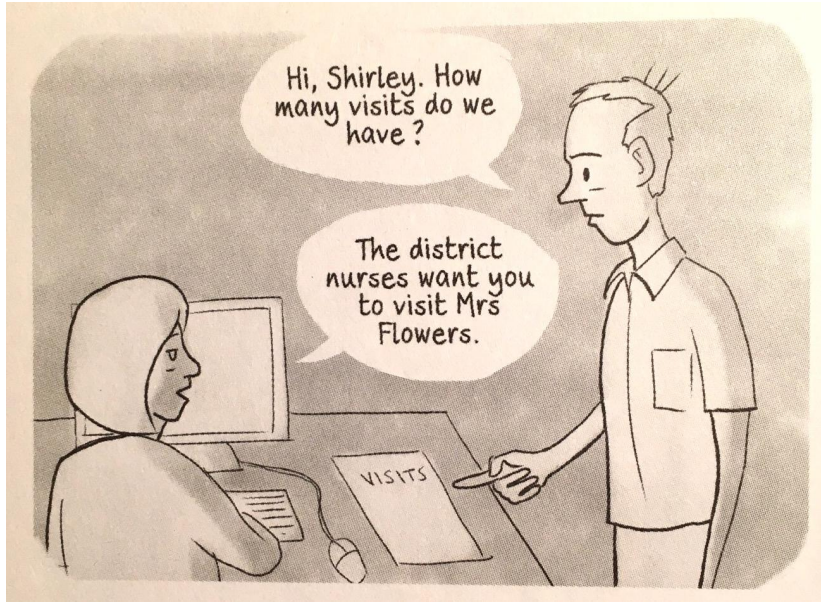


## *Doonesbury: The War Within*—G.B. Trudeau





# *The Bad Doctor and The Lady Doctor*—Ian Williams



## *Fear of Failure*—Ian Williams



# Qualitative: 34 publications

- Seen, not heard: 13
- Heard, not seen: 7
- Seen and heard: 14
- Meaningful: 8

# Participation



Do they want in?





Why?



# Challenges

- Social
  - Status and hierarchy
- Logistics
  - Time
  - Managerial support
  - Care commitments (childcare, eldercare)
  - Cost of event participation



What can we do?

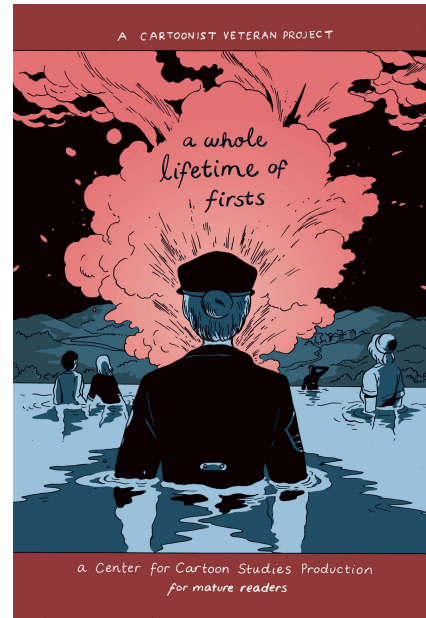
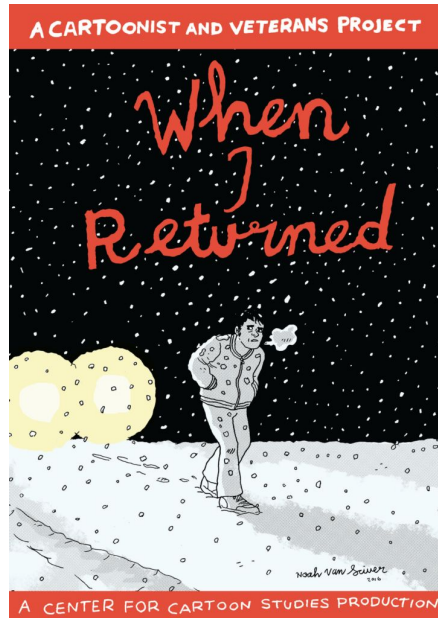




# Active outreach

- Not just “call for entries” or “registration is open”
- Reach out, do the footwork, find people
- Make them feel welcomed, invited, and safe

# Collaborations



<https://www.cartoonstudies.org/css-studio/cartoonist-veteran-project/>

# Start a conversation

- Those of you who work in healthcare: Just chat?

**In Closing...**

FIRST OPINION

## In hospitals, housekeepers are truly the 'keepers of the house'

By NEIL PROSE and RAY BARFIELD / FEBRUARY 5, 2020



ALEX HOGAN/STAT

<https://www.statnews.com/2020/02/05/hospital-housekeepers-truly-keepers-of-the-house/>

# Thank you!

---

Cathy Leamy • [www.metrokitty.com](http://www.metrokitty.com) • Twitter: [@metrokitty](https://twitter.com/metrokitty)