



Dendritic Epidermal T Cells in Allergic Contact Dermatitis

Mraz, Veronika; Geisler, Carsten; Bonefeld, Charlotte Menné

Published in:
Frontiers in Immunology

DOI:
[10.3389/fimmu.2020.00874](https://doi.org/10.3389/fimmu.2020.00874)

Publication date:
2020

Document version
Publisher's PDF, also known as Version of record

Document license:
[CC BY](https://creativecommons.org/licenses/by/4.0/)

Citation for published version (APA):
Mraz, V., Geisler, C., & Bonefeld, C. M. (2020). Dendritic Epidermal T Cells in Allergic Contact Dermatitis. *Frontiers in Immunology*, 11, [874]. <https://doi.org/10.3389/fimmu.2020.00874>



Dendritic Epidermal T Cells in Allergic Contact Dermatitis

Veronika Mraz, Carsten Geisler and Charlotte Menné Bonefeld*

The LEO Foundation Skin Immunology Research Center, Department of Immunology and Microbiology, Faculty of Health and Medical Sciences, University of Copenhagen, Copenhagen, Denmark

Allergic contact dermatitis (ACD) is a common inflammatory skin disease with a prevalence of approximately 20% in the European population. ACD is caused by contact allergens that are reactive chemicals able to modify non-immunogenic self-proteins to become immunogenic proteins. The most frequent contact allergens are metals, fragrances, and preservatives. ACD clinically manifests as pruritic eczematous lesions, erythema, local papules, and oedema. ACD is a T cell-mediated disease, involving both CD4⁺ and CD8⁺ T cells. In addition, $\gamma\delta$ T cells appear to play an important role in the immune response to contact allergens. However, it is debated whether $\gamma\delta$ T cells act in a pro- or anti-inflammatory manner. A special subset of $\gamma\delta$ T cells, named dendritic epidermal T cells (DETC), is found in the epidermis of mice and it plays an important role in immunosurveillance of the skin. DETC are essential in sensing the contact allergen-induced stressed environment. Thus, allergen-induced activation of DETC is partly mediated by numerous allergen-induced stress proteins expressed on the keratinocytes (KC). Several stress proteins, like mouse UL-16-binding protein-like transcript 1 (Mult-1), histocompatibility 60 (H60) and retinoic acid early inducible-1 (Rae-1) α - ϵ family in mice and major histocompatibility complex (MHC) class I—chain-related A (MICA) in humans, are upregulated on allergen-exposed KC. Allergen-induced stress proteins expressed on the KC are consequently recognized by NKG2D receptor on DETC. This review focuses on the role of $\gamma\delta$ T cells in ACD, with DETC in the spotlight, and on the role of stress proteins in contact allergen-induced activation of DETC.

Keywords: allergic contact dermatitis, skin, inflammatory disease, contact allergens, dendritic epidermal T cells, $\gamma\delta$ T cells, stress proteins

OPEN ACCESS

Edited by:

Weifeng He,
Army Medical University, China

Reviewed by:

Yashu Li,
Southwest University, China
Takeshi Nitta,
The University of Tokyo, Japan

*Correspondence:

Charlotte Menné Bonefeld
cmenne@sund.ku.dk

Specialty section:

This article was submitted to
T Cell Biology,
a section of the journal
Frontiers in Immunology

Received: 21 February 2020

Accepted: 16 April 2020

Published: 19 May 2020

Citation:

Mraz V, Geisler C and Bonefeld CM
(2020) Dendritic Epidermal T Cells in
Allergic Contact Dermatitis.
Front. Immunol. 11:874.
doi: 10.3389/fimmu.2020.00874

ALLERGIC CONTACT DERMATITIS

Allergic contact dermatitis (ACD), an inflammatory dermatosis caused by contact of the skin with substances from the environment, is known to humankind since ancient times (1). One of the first cases come from the first century A.D., where patients experienced pruritic eczema upon cutting pine trees (2).

ACD is a type IV hypersensitivity mainly orchestrated by allergen-specific T cells (3), and it is one of the most frequent forms of inflammatory skin diseases. ACD clinically manifests as pruritic eczematous lesions, erythema, local papules and oedema (4–6). In most cases, the dermatitis is localized to the site of contact with the contact allergen; however, systemic reactions can also occur (7, 8). In chronic lesions, the skin is scaly and thicker with erythema and often vesicles (9).

Allergy to contact allergens is diagnosed by patch testing. The most recent systematic review and meta-analysis conducted by *Alinaghi et al.* states that 20.1% of patch tested individuals from the general population suffer from contact allergy with twice as high prevalence in women than in men (10). The most common contact allergens are nickel, cobalt, fragrance allergens, chromium, *p*-phenylenediamine, methylchloroisothiazolinone/methylisothiazolanone, and colophonium (10). Treatment of ACD is still only symptomatic often including anti-inflammatory corticosteroids (11). A deeper understanding of the immune cells and signaling pathways involved in the response to contact allergens is central for the development of more specific treatments for ACD.

IMMUNE RESPONSE TO CONTACT ALLERGENS

Much of our knowledge on the immune response to contact allergens comes from studies using mouse models. Mouse models of ACD are often described as contact hypersensitivity (CHS) models. As ACD is a result of CHS, the abbreviations ACD and CHS will be used interchangeably in this review. ACD is mainly driven by T cells and its pathophysiology is divided into two phases, namely the sensitization and the elicitation/challenge phase (**Figure 1**). After penetrating the skin, contact allergens modify self-proteins into immunogenic proteins. The stability of the immunogenic proteins is crucial for a proper induction of an acquired immune response (12). Skin inflammation is rapidly induced upon exposure of the skin to contact allergens with interleukin (IL) IL-1 β and IL-18 being essential in the response (13–17). Blocking IL-1 β with neutralizing antibodies prior to sensitization with TNCB resulted in decreased ear swelling after challenge to TNCB, indicating that IL-1 β plays an important role in the induction of ACD in mice (18). IL-1 β -deficient mice showed no footpad swelling following sensitization with low concentration of TNCB and required high concentrations of TNCB to develop significant footpad swelling (19). Treatment of mice with the IL-1 receptor (IL-1R) antagonist anakinra suppressed the ear swelling in response to DNFB (20), and a similar effect was seen in IL-1R-deficient mice in response to TNCB (15). In brief, IL-1 β clearly seems to be an important mediator in both the sensitization and elicitation phases (15, 18–20).

The inflammatory response leads to activation and migration of antigen-presenting cells (APC) from the skin via afferent lymphatic vessels to the draining lymph nodes (dLN), where the priming and activation of naïve T cells occur (21–23). Following activation, T cells proliferate and differentiate into effector and memory T cells. By the generation of memory T cells an individual has become sensitized to the allergen and subsequent exposures to the same allergen will induce a challenge/elicitation response.

Both CD4⁺ and CD8⁺ T cells are important mediators of the immune response to contact allergens. However, whereas CD8⁺ T cells are involved in pro-inflammatory

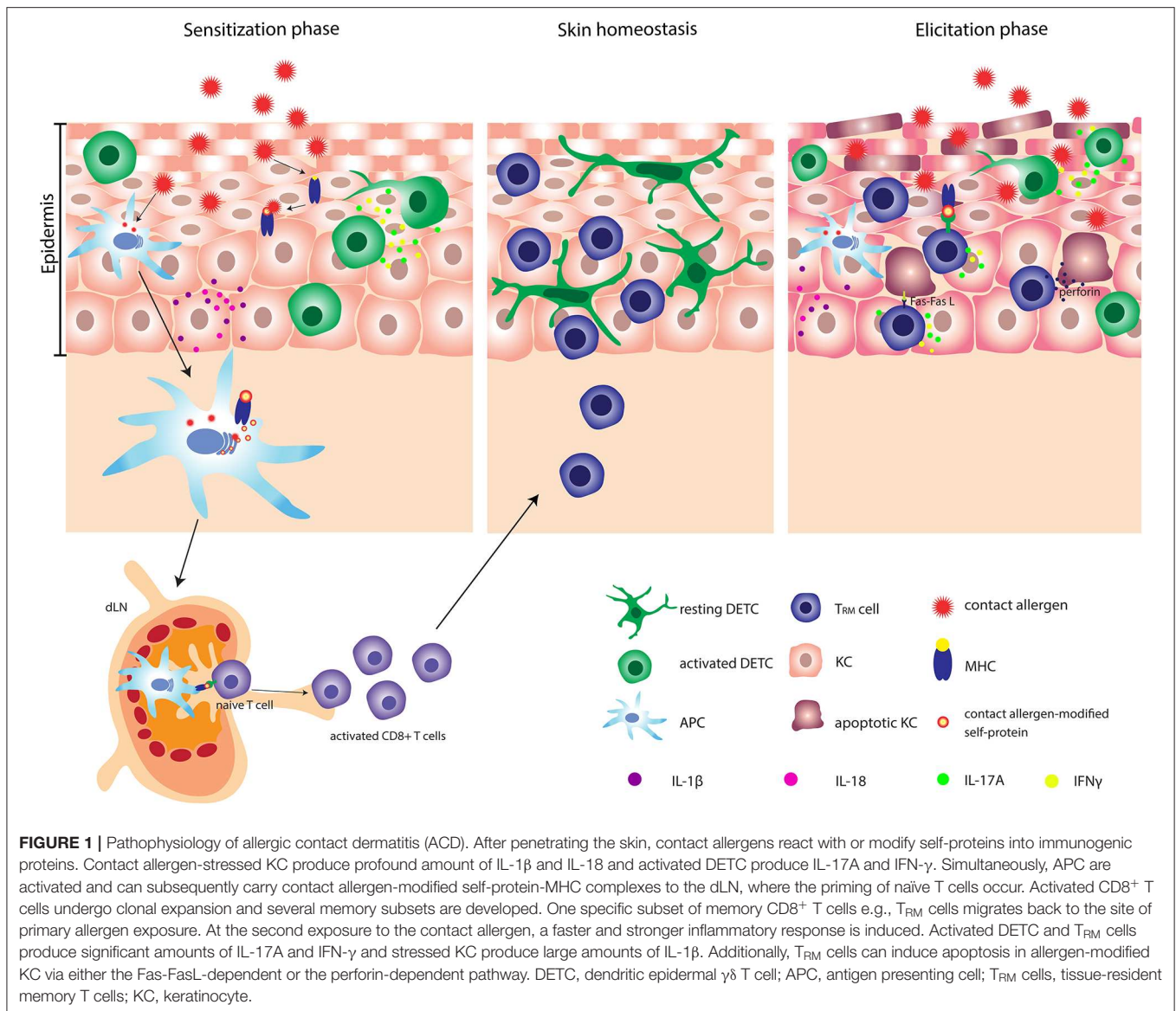
responses, CD4⁺ T cells can mediate both pro- and anti-inflammatory responses (24, 25). CD4⁺ and CD8⁺ T cells mediate inflammation via production of IFN γ and IL-17A (25–31). Different subsets of memory T cells, including circulating central and effector memory T cells and tissue-resident memory T (T_{RM}) cells develop during the sensitization phase (32). A specific subset of CD8⁺ T_{RM} cells is generated locally in the epidermis following exposure of the skin to contact allergens (32–34). Interestingly, a faster and stronger inflammatory response is induced in allergen-experienced skin compared to allergen-unexperienced skin. The increased response correlates with the production of IFN γ and IL-17A by T_{RM} cells (33).

ROLE OF $\gamma\delta$ T CELLS IN ACD

$\gamma\delta$ T cells are unconventional T cells (35, 36) and represent only a minor fraction of the T cells in the blood. However, $\gamma\delta$ T cells populate non-lymphoid tissues, like the skin at a high frequency (37–42). A specific subset of $\gamma\delta$ T cells is found in mouse epidermis, namely the dendritic epidermal T cells (DETC) that play an important role in skin homeostasis and repair (42–44). The DETC have a highly restricted TCR repertoire, expressing the invariant V γ 3V δ 1 TCR (35, 36, 45). An alternative nomenclature for $\gamma\delta$ TCR exists in which DETC are V γ 5V δ 1 (46). Thus, DETC are able to recognize only a limited pool of antigens (35, 36, 47). The antigens recognized by the DETC are yet to be discovered (42, 44, 48–52). However, DETC possess other receptors that recognize a variety of stress-induced molecules and heat shock proteins in a MHC-independent manner (53, 54). This characteristic makes DETC efficient responders to various environmental triggers (**Figure 2**).

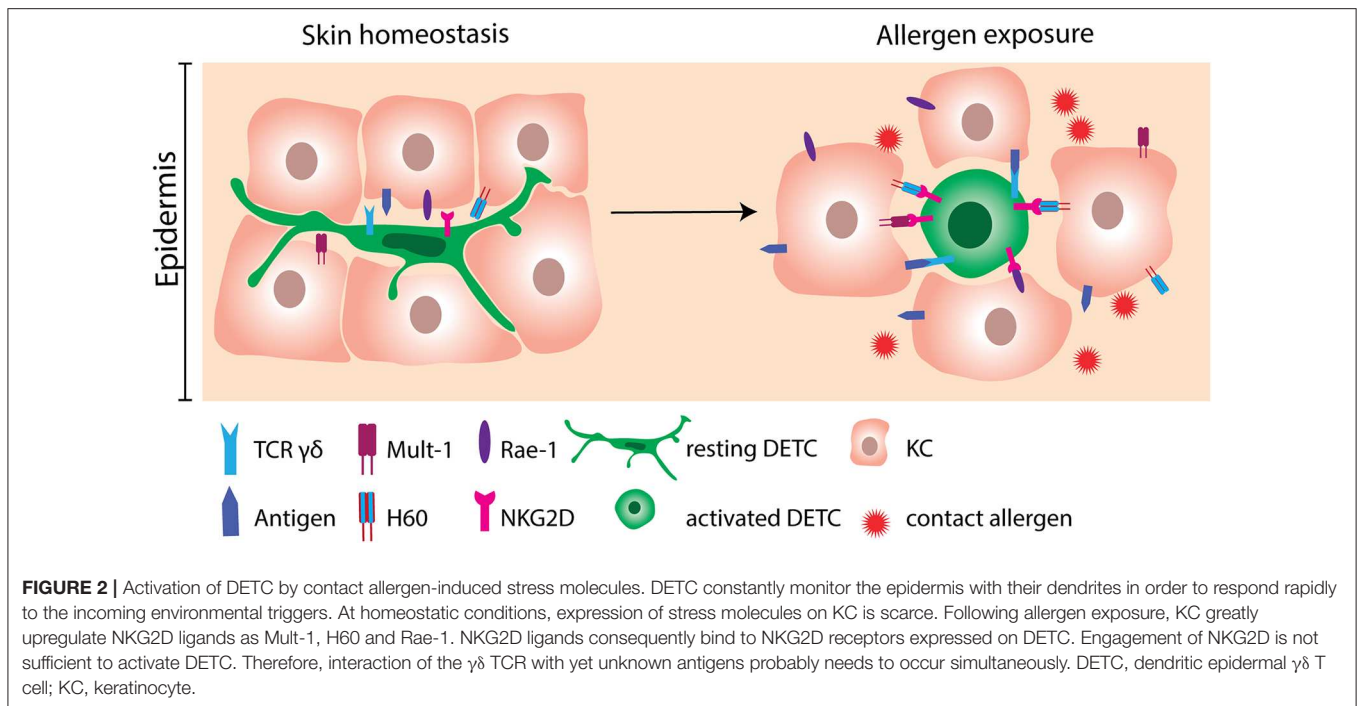
The role of $\gamma\delta$ T cells, including DETC, in ACD is debated (please see **Table 1** for an overview). Some studies have suggested that $\gamma\delta$ T cells play a pro-inflammatory role (20, 55–59, 67), whereas other studies have suggested an anti-inflammatory role of $\gamma\delta$ T cells in ACD (63–66). A role of $\gamma\delta$ T cells in the response to contact allergens was first shown by adoptive transfer of T cells isolated from the dLN of sensitized mice into allergen-naïve mice (55–57). It was shown that $\gamma\delta$ T cells assist $\alpha\beta$ T cells in the transfer of CHS from sensitized to naïve mice (55–57), as adoptive transfer of only $\alpha\beta$ T cells was not sufficient to transfer CHS. Both $\alpha\beta$ and $\gamma\delta$ T cells were required to transfer CHS (55, 57). It can be speculated, that the $\gamma\delta$ and $\alpha\beta$ T cells rely on each other with the production of different cytokines and chemokines required for the migration to allergen-exposed sites. Interestingly, transfer of $\alpha\beta$ T cells from mice sensitized with TNP-Cl together with $\gamma\delta$ T cells from mice sensitized with oxazolone (OXA) to allergen-naïve mice, which were subsequently challenged with TNP-Cl, resulted in increased CHS, indicating that $\gamma\delta$ T cells assist $\alpha\beta$ T cells in an allergen-unspecific manner (55).

The inflammatory role of $\gamma\delta$ T cells in response to contact allergens was further underlined in studies using TCR δ -deficient mice (20, 58). Lack of $\gamma\delta$ T cells resulted in more than a 50% reduction in the response to DNFB as measured by changes in



ear-thickness (20, 58). Interestingly, the $\gamma\delta$ T cells that assist the $\alpha\beta$ T cells were shown to be DETC (55, 56). In accordance, we have shown that exposure of the skin to DNFB results in activation of DETC (20). The contact allergen-induced DETC activation was mediated by an indirect pathway, probably via the KC, involving IL-1 β (20). In addition to DETC, the role of dermal $\gamma\delta$ T cells in inflammatory skin disorders has been extensively investigated (58, 68–70). It has been shown that chimeric mice deficient in dermal $\gamma\delta$ T cell but with normal amount of DETC have reduced ear swelling in response to DNFB treatment compared to WT mice. This indicated that dermal $\gamma\delta$ T cells play an important pro-inflammatory role in the acute CHS response (58). In accordance, it was shown that dermal $\gamma\delta$ T cells play a significant role in recruitment of neutrophils to the skin upon exposure to DNFB via an IL-17-dependent pathway (58).

Although these studies provide a strong evidence for a pro-inflammatory role of $\gamma\delta$ T cells in the response to contact allergens, other studies have suggested an anti-inflammatory role of $\gamma\delta$ T cells in ACD (63–66, 71). *Guan et al.* found that a lack of $\gamma\delta$ T cells correlated with an increased ear swelling following OXA challenge (65). They used two different models to investigate this; TCR δ deficient C57BL/6 mice and depletion of the $\gamma\delta$ T cells using the antibody UC7-13D5 (65). Interestingly, it has subsequently been shown that UC7-13D5 does not deplete $\gamma\delta$ T cells, but instead induces TCR internalization and thereby generates “invisible” $\gamma\delta$ T cells (72). Furthermore, as they only analyzed the response by changes in ear thickness, it is hard to conclude whether $\gamma\delta$ T cells are in fact anti-inflammatory. In contrast, *Girardi et al.* observed no significant difference in ear thickness between TCR δ -deficient C57BL/6 mice and C57BL/6 mice following DNFB challenge (66). However, in the



same study, an increase in ear thickness was found in TCR δ -deficient FVB-Tac mice compared to FVB-Tac mice using the same experimental setting. At first sight, this study suggested that DETC in C57BL/6 mice play a neutral role in ACD, whereas they play an anti-inflammatory role in FVB-Tac mice (66). However, it was subsequently shown that FVB-Tac mice have a defect in the development of DETC due to the lack of Skint-1 expression in the thymus (73–75). Interestingly, FVB-Tac mice develop spontaneous skin inflammation that correlates with infiltration of $\alpha\beta$ T cells in the epidermis (73). Furthermore, an increased spontaneous skin inflammation was seen in TCR δ -deficient FVB-Tac mice compared to FVB-Tac mice (66). We have recently shown that a low-grade steady-state inflammation in mice with normal DETC increases the responsiveness to various contact allergens (76). Therefore, we find it difficult to conclude whether the increased response to contact allergens found in TCR δ -deficient FVB-Tac mice compared to FVB-Tac mice is directly mediated by an anti-inflammatory role of DETC or caused by the increased spontaneous skin inflammation observed in TCR δ -deficient FVB-Tac mice. Sullivan *et al.* found that intravenously (i.v.) injection of Thy-1⁺ epidermal cells primed with 2,4,6-trinitrobenzenesulfonic acid (TNBS) *in vitro* resulted in decreased ear swelling in C57BL/6 mice sensitized with TNBS, and that the size of the ear swelling was inversely correlated with the numbers of Thy-1⁺ epidermal cells injected (63). However, it was later shown that only 27% of Thy-1⁺ epidermal cells co-expressed V γ 3 (64). This makes it difficult to conclude whether the tolerance induction is mediated by DETC or by another cell type. In addition, it was shown that *in vitro* FITC-conjugated Thy-1⁺ epidermal cells clones (AU4 and AU16) could induce tolerance in FITC-challenged C3H mice when injected subcutaneously (s.c.) but not when

injected i.v. (64). In contrast, unconjugated AU4 and AU16 were not able to suppress ear swelling when administered s.c. but only when injected i.v. However, whereas both AU4 and AU16 expressed Thy-1, neither of them expressed V γ 3 (64). Therefore, it is difficult to conclude that the induced tolerance is mediated by DETC. However, both studies showed that the tolerance was mediated in an allergen-specific manner (63, 64). Thus, it was found that downregulation of the CHS response occurred in C57BL/6 mice that received i.v. injections of TNBS-primed Thy-1⁺ epidermal cells prior to sensitization and challenge with TNBS but not in mice sensitized and challenged with OXA (63). Furthermore, FITC-conjugated AU16 cells ameliorated the ear swelling in C3H mice that were challenged with FITC, but not in the C3H mice challenged with DNFB (64).

The conflicting results on the role of $\gamma\delta$ T cells in the response to contact allergens seen in studies using TCR δ -deficient mice, might as discussed above be due to the level of spontaneous inflammation seen depending on different genetic background (20, 58, 65, 66). However, the diverging results on the role of $\gamma\delta$ T cells in the response to contact allergens were also seen in studies with TCR δ -deficient mice on a C57BL/6 background: a pro-inflammatory role (20, 58), an anti-inflammatory role (65) and no effect (66). The explanation for this might be the use of different mouse models to induce CHS. Girardi *et al.* and Guan *et al.* sensitized and challenged on different skin areas whereas Nielsen *et al.* and Jiang *et al.* sensitized and challenged on the same skin area. Finally, lack of $\gamma\delta$ T cells have been shown to lead to a repopulation of the skin by other cells, including innate lymphoid cells (ILC) and different types of $\alpha\beta$ T cells e.g., DETC-like $\alpha\beta$ T cells within the epidermis (48, 77). Interestingly, dermal ILC3 and CD4⁺ T helper 17 cells (Th17)

TABLE 1 | Pro-inflammatory and anti-inflammatory roles of $\gamma\delta$ T cells. DETC; dendritic epidermal $\gamma\delta$ T cell.

Species	Model	Cell type	Cell markers	Localization	Effect	Reference
Pro-inflammatory role in ACD						
Mouse	<i>In vivo</i> depletion with anti-TCR δ (UC7-13D5) in CBA/J mice	$\gamma\delta$ T cells	TCR $\gamma\delta$ (UC7-13D5)	Skin	Assist $\alpha\beta$ T cells in the transfer of CHS in an allergen-unspecific manner	(55)
	Adoptive transfer of allergen-derivatized lymphocytes in CHS model in CBA/J mice		TCR $\gamma\delta$ (GL3)			(56)
	<i>In vivo</i> allergen-derivatized $\gamma\delta$ T cells for adoptive transfer to CBA/J mice		TCR $\gamma\delta$ (UC7-13D5/GL4)			(57)
	C57BL/6 TCR δ KO mice		TCR $\gamma\delta$ (GL3), V γ 3 (536), V γ 4 (UC3-10A6)	Dermis	Produce IL-17, recruit neutrophils to the skin in the acute CHS response	(58)
	CHS model in CBA/J mice	DETC	TCR $\gamma\delta$ (UC7-13D5), V γ 3 (536)	Lymph nodes and peritoneal cavity	Assist $\alpha\beta$ T cells in the transfer of CHS in an allergen-unspecific manner	(55)
	Adoptive transfer of allergen-derivatized lymphocytes in CHS model in CBA/J mice		TCR $\gamma\delta$ (GL3), V γ 3 (536)	Skin		(56)
	C57BL/6 TCR δ KO mice and epidermis-derived DETC short-term cell line		TCR $\gamma\delta$ (GL3), V γ 3 (536)	Epidermis	Produce IFN- γ and IL-17A following allergen treatment	(20)
	DETC cell line 7-17				Produce IFN- γ following allergen treatment	(59)
Human	Skin biopsies from allergen-induced skin lesions of healthy donors	V δ 2 ⁺ V γ 9 ⁺ T cells	TCR δ 1, V δ 1 (δ TCS1), V δ 2 (BB3), V γ 9 (T γ A)	Epidermis and dermis	Amplification or resolution of ACD	(60)
	Skin biopsies from patients with allergy to heavy metal salts				Mediate skin defense against highly reactive heavy metals	(61)
	Skin biopsies from patients with nickel allergy	$\gamma\delta$ T cells	TCR $\gamma\delta$ (γ 3.20)		Produce IFN- γ , IL-17A and IL-22	(62)
Anti-inflammatory role in ACD						
Mouse	Allergen-derivatized Thy ⁺ cells used for adoptive transfer to C57BL/6 mice	Thy1 ⁺ cells	Thy-1.2 (30-H12)	Epidermis	Ameliorate CHS response in an allergen-specific manner	(63)
	Allergen-derivatized/non-derivatized epidermis-derived cell lines AU4, AU16 used for adoptive transfer to C3H mice					(64)
	C57BL/6 TCR δ KO mice and <i>in vivo</i> depletion with anti-TCR δ (UC7-13D5)	$\gamma\delta$ T cells		Skin		(65)
	FVB TCR δ KO mice	DETC	TCR $\gamma\delta$ (GL3), V γ 3 (536)	Epidermis		(66)

were found able to take over the functions of acutely depleted $\gamma\delta$ T cells (77). Additionally, the repopulation is likely to depend on the microbiotic environment within the specific animal facility. Thus, further investigations using combination of various $\gamma\delta$ T

cells ablation strategies like conditional depletion of $\gamma\delta$ T cells and TCR δ -deficient model, together with CHS model might bring new insights to the role of DETC during the response to contact allergens.

ALLERGEN-INDUCED ACTIVATION OF DETC

DETC were first described as Thy-1⁺ dendritic epidermal T cells (37, 38) and since then their role has been intensively investigated in healthy skin (48, 52, 78) and in different skin pathologies (20, 59, 66, 67, 79–84). Interestingly, contact allergens cannot directly activate DETC but must act via an indirect pathway to activate the DETC (20). Contact allergen-induced stress molecules expressed or secreted by KC likely mediate the contact allergen-induced DETC activation.

With their dendrites, DETC monitor the microenvironment of the epidermis (Figure 2). Since each DETC is in direct contact to multiple KC, they respond rapidly to stressed and damaged KC (42, 59, 78, 85). In line with this, KC and epidermal cells (EC) primed with DNFB *in vitro* or *in vivo* can activate cultured DETC. Additionally, EC primed with different contact allergens like TNCB, OXA can activate DETC, whereas EC primed with irritants like sodium lauryl sulfate (SLS) and croton oil cannot activate DETC (67). If the DETC are physically separated from the EC by a cytokine permeable membrane, their proliferation rate is reduced (67), showing the importance of cell to cell contact for proper DETC activation. Several molecules, such as the NKG2D ligands mouse UL-16-binding protein-like transcript 1 (Mult-1), histocompatibility 60 (H60) and retinoic acid early inducible-1 (Rae-1) α - ϵ family in mice and MHC class I-chain-related A (MICA) in humans have been investigated for their ability to provide activation signals to DETC (59, 86–90). In the absence of cellular stress, the NKG2D ligands are scarcely expressed (91). However, following treatment with 2,4-dinitrobenzenesulfonic acid (DNBS) the murine KC cell line PAM2.12 upregulates Mult-1, H60 and Rae-1 (59). Likewise, treatment of mice with DNFB resulted in upregulation of Mult-1 in the epidermis (59). Importantly, DETC seem to be the only cells expressing NKG2D in the skin of mice (59). In humans, MICA is upregulated on primary KC following exposure to nickel (59). Interestingly, in addition to cutaneous lymphocyte-associated antigen (CLA) positive $\gamma\delta$ T cells, a majority of CLA⁺ CD8⁺ T cells and of CLA⁺ natural killer (NK) cells express NKG2D in humans (59). Blocking NKG2D on DETC resulted in a reduction in allergen-induced IFN- γ production (59), which provides strong evidence for an important role of NKG2D and its ligands in allergen-induced DETC activation. In addition to NKG2D, two other co-stimulatory receptors, JAML and CD100, play important roles in DETC activation during wound repair (79, 87). Although, the role of JAML and CD100 have not been investigated in ACD, it may be speculated that they play a similar role in DETC activation and the inflammatory response in ACD as seen in wound repair.

$\gamma\delta$ T CELLS IN HUMAN ACD

The role of $\gamma\delta$ T cells in ACD in humans is poorly characterized. In normal adult skin, $\gamma\delta$ T cells represent around 1–15% of the CD3⁺ lymphocytes (41, 60, 92, 93) with $\gamma\delta$ T cells located within the basal KC layer of the epidermis and in the perivascular

areas of the dermis. The localization of $\gamma\delta$ T cells in perivascular areas suggests their origin from the circulation (39, 41, 92). In accordance, $\gamma\delta$ T cells infiltrate the epidermis and dermis at later time point after challenge with DNCB, namely at 48 h post challenge (60). This suggested a role for $\gamma\delta$ T cells in the amplification or the resolution of ACD reaction and not its initiation (60). In addition, $\gamma\delta$ T cells are found in the epidermis and the dermis in allergic skin reactions to gold chloride and some of them exert dendritic morphology (61). Finally, challenge of the skin with nickel in nickel-allergic patients, resulted in a rise of $\gamma\delta$ T cells that produced IFN- γ , IL-17A, and IL-22 in the dermis (62). This suggested a pro-inflammatory role of $\gamma\delta$ T cells in the response to nickel. Although $\alpha\beta$ T cells certainly are central mediators of ACD, more studies on human $\gamma\delta$ T cells should be conducted to fully characterize their role in ACD.

TARGETING NKG2D AS A POTENTIAL NOVEL TREATMENT FOR ACD

Avoidance of exposure to the specific contact allergen is the optimal preventive treatment and will ease the symptoms in many patients with ACD. However, some patients cannot avoid the contact allergen and others need active treatment in addition to allergen avoidance to resolve the symptoms. Thus, treatment with broad anti-inflammatory/immunosuppressive drugs such as corticosteroids and cyclosporine is crucial to restrain ACD symptoms. To date, no biologics have been proven successful in the treatment of ACD in man (94). A central role of NKG2D in responses to contact allergens suggests that targeting NKG2D might be a more specific way to treat ACD than the broad anti-inflammatory/immunosuppressive drugs used today (59). Thus, locally applied NKG2D blockers or antagonist should be tested for their use in treatment of ACD. Furthermore, it has been shown that ligation of NKG2D leads to DETC degranulation-mediated cytotoxicity (88) and consequently degranulation inhibitors might be alternative promising compounds in ACD. In brief, further basic and clinical studies investigating precision therapeutics are crucial for the development of more specific treatments of ACD.

CONCLUSION

$\gamma\delta$ T cells, including DETC, are crucial regulators of immune responses to contact allergens. Although some studies have suggested that $\gamma\delta$ T cells might play an anti-inflammatory role during ACD, the majority of studies point to a pro-inflammatory role of $\gamma\delta$ T cells in ACD. Contact allergens induce activation of DETC in mice via an indirect pathway that involves both cytokines and stress molecules expressed by KC which are subsequently recognized by NKG2D on the DETC. As human KC also produce and express cytokines and stress molecules in response to allergens, it is likely that these molecules could be potential targets in more specific treatments of ACD.

AUTHOR CONTRIBUTIONS

VM, CG and CB wrote the paper. VM made the table and figures.

FUNDING

VM receives a PhD-grant from the LEO Foundation.

REFERENCES

- Lachapelle JM. Historical Aspects. In: Frosch PJ, Menné T, Lepoittevin JP, editors. *Contact Dermatitis*. Berlin; Heidelberg: Springer (2006). doi: 10.1007/3-540-31301-X_1
- Castagne D. *Dermatoses Professionnelles Provoquées par Les Bois Tropicaux*. Thèse de Médecine, University of Bordeaux, Bordeaux (1976).
- Rustemeyer T, Hoogstraten IMW, Van Blomberg BME, Von Scheper RJ. Dermatitis In *Contact Dermatitis* (Heidelberg: Springer, Berlin), 11–43. doi: 10.1007/3-540-31301-X_2
- Martin SF, Esser PR, Weber FC, Jakob T, Freudenberg MA, Schmidt M, et al. Mechanisms of chemical-induced innate immunity in allergic contact dermatitis. *Allergy Eur J Allergy Clin Immunol*. (2011) 66:1152–63. doi: 10.1111/j.1398-9995.2011.02652.x
- Han JH, Lee HJ, Bang CH, Lee JHJY, Park YM, Lee JHJY. P-phenylenediamine hair dye allergy and its clinical characteristics. *Ann Dermatol*. (2018) 30:316–21. doi: 10.5021/ad.2018.30.3.316
- Ahlström MG, Thyssen JP, Wennervaldt M, Menné T, Johansen JD. Nickel allergy and allergic contact dermatitis: a clinical review of immunology, epidemiology, exposure, and treatment. *Contact Dermatitis*. (2019) 81:227–41. doi: 10.1111/cod.13327
- Jacob SE, Barland C, ElSaie ML. Patch-test-induced “flare-up” reactions to neomycin at prior biopsy sites. *Dermatitis*. (2008) 19:46–8. doi: 10.2310/6620.2008.08023
- Tan CH, Rasool S, Johnston GA. Contact dermatitis: allergic and irritant. *Clin Dermatol*. (2014) 32:116–24. doi: 10.1016/j.clindermatol.2013.05.033
- Blauvelt A, Hwang ST, Udey MC. Allergic and immunologic diseases of the skin. *J Allergy Clin Immunol*. (2003) 111:560–70. doi: 10.1067/mai.2003.78
- Alinaghi F, Bennike NH, Egeberg A, Thyssen JP, Johansen JD. Prevalence of contact allergy in the general population: a systematic review and meta-analysis. *Contact Derm*. (2019) 80:77–85. doi: 10.1111/cod.13119
- Karlberg AT, Bergström MA, Börje A, Luthman K, Nilsson JLG. Allergic contact dermatitis - Formation, structural requirements, and reactivity of skin sensitizers. *Chem Res Toxicol*. (2008) 21:53–69. doi: 10.1021/tx7002239
- Vocanson M, Hennino A, Rozières A, Poyet G, Nicolas JF. Effector and regulatory mechanisms in allergic contact dermatitis. *Allergy Eur J Allergy Clin Immunol*. (2009) 64:1699–714. doi: 10.1111/j.1398-9995.2009.02082.x
- Enk AH, Katz SI. Early molecular events in the induction phase of contact sensitivity. *Proc Natl Acad Sci USA*. (1992) 89:1398–402. doi: 10.1111/1523-1747.ep12668608
- Sutterwala FS, Ogura Y, Szczepanik M, Lara-Tejero M, Lichtenberger GS, Grant EP, et al. Critical role for NALP3/CIAS1/cryopyrin in innate and adaptive immunity through its regulation of caspase-1. *Immunity*. (2006) 24:317–27. doi: 10.1016/j.immuni.2006.02.004
- Watanabe H, Gaide O, Pétrilli V, Martinon F, Contassot E, Roques S, et al. Activation of the IL-1 β -processing inflammasome is involved in contact hypersensitivity. *J Invest Dermatol*. (2007) 127:1956–63. doi: 10.1038/sj.jid.5700819
- Vennegaard MT, Dyring-Andersen B, Skov L, Nielsen MM, Schmidt JD, Bzorek M, et al. Epicutaneous exposure to nickel induces nickel allergy in mice via a MyD88-dependent and interleukin-1-dependent pathway. *Contact Derm*. (2014) 71:224–32. doi: 10.1111/cod.12270
- Watanabe H, Gehrke S, Contassot E, Roques S, Tschopp J, Friedmann PS, et al. Danger signaling through the inflammasome acts as a master switch between tolerance and sensitization. *J Immunol*. (2008) 180:5826–32. doi: 10.4049/jimmunol.180.9.5826
- Enk AH, Angeloni VL, Udey MC, Katz SI. An essential role for Langerhans cell-derived IL-1 beta in the initiation of primary immune responses in skin. *J Immunol*. (1993) 150:3698–704.
- Shornick LP, De Togni P, Mariathan S, Goellner J, Strauss-Schoenberger J, Karr RW, et al. Mice deficient in IL-1 β manifest impaired contact hypersensitivity to trinitrochlorobenzene. *J Exp Med*. (1996) 183:1427–36. doi: 10.1084/jem.183.4.1427
- Nielsen MM, Lovato P, MacLeod AS, Witherden DA, Skov L, Dyring-Andersen B, et al. IL-1 β -Dependent activation of dendritic epidermal T cells in contact hypersensitivity. *J Immunol*. (2014) 192:2975–83. doi: 10.4049/jimmunol.1301689
- Kripke ML, Munn CG, Jeevan A, Tang J, Bucana C. Evidence that cutaneous antigen-presenting cells migrate to regional lymph nodes during contact sensitization. *J Immunol*. (1990) 145:2833–8.
- Weinlich G, Heine M, Stossel H, Zanella M, Stoitzner P, Ortner U, et al. Entry into afferent lymphatics and maturation *in situ* of migrating murine cutaneous dendritic cells. *J Invest Dermatol*. (1998) 110:441–8. doi: 10.1046/j.1523-1747.1998.00161.x
- Honda T, Nakajima S, Egawa G, Ogasawara K, Malissen B, Miyachi Y, et al. Compensatory role of Langerhans cells and langerin-positive dendritic cells in the sensitization phase of murine contact hypersensitivity. *J Allergy Clin Immunol*. (2010) 125: 1154–6.e2. doi: 10.1016/j.jaci.2009.12.005
- Gocinski BL, Tigelaar RE. Roles of CD4 + and CD8 + T cells in murine contact sensitivity revealed by *in vivo* monoclonal antibody depletion. *J Immunol*. (1990) 144:4121–8.
- Wang B, Fujisawa H, Zhuang L, Freed I, Howell BG, Shahid S, et al. CD4 + Th1 and CD8 + Type 1 Cytotoxic T Cells Both Play a Crucial Role in the Full Development of Contact Hypersensitivity. *J Immunol*. (2000) 165:6783–90. doi: 10.4049/jimmunol.165.12.6783
- Abe M, Kondo T, Xu H, Fairchild RL. Interferon- γ inducible protein (IP-10) expression is mediated by CD8+ T cells and is regulated by CD4+ T cells during the elicitation of contact hypersensitivity. *J Invest Dermatol*. (1996) 107:360–6. doi: 10.1111/1523-1747.ep12363337
- Xu H, Dilulio NA, Fairchild RL. T cell populations primed by hapten sensitization in contact sensitivity are distinguished by polarized patterns of cytokine production: interferon gamma-producing (Tc1) effector CD8+ T cells and interleukin (IL) 4/IL-10-producing (Th2) negative regulator. *J Exp Med*. (1996) 183:1001–12. doi: 10.1084/jem.183.3.1001
- Nakae S, Komiyama Y, Nambu A, Sudo K, Iwase M, Homma I, et al. Antigen-specific T cell sensitization is impaired in IL-17-deficient mice, causing suppression of allergic cellular and humoral responses. *Immunity*. (2002) 17:375–87. doi: 10.1016/S1074-7613(02)00391-6
- He D, Wu L, Kim HK, Li H, Elmetts CA, Xu H. CD8 + IL-17-Producing T Cells Are Important in Effector Functions for the Elicitation of Contact Hypersensitivity Responses. *J Immunol*. (2006) 177:6852–8. doi: 10.4049/jimmunol.177.10.6852
- Kish DD, Li X, Fairchild RL. CD8 T cells producing IL-17 and IFN- γ initiate the innate immune response required for responses to antigen skin challenge. *J Immunol*. (2009) 182:5949–59. doi: 10.4049/jimmunol.08.02830
- He D, Wu L, Kim HK, Li H, Elmetts CA, Xu H. IL-17 and IFN- γ mediate the elicitation of contact hypersensitivity responses by different mechanisms and both are required for optimal responses. *J Immunol*. (2009) 2:1463–70. doi: 10.4049/jimmunol.0804108
- Gaide O, Emerson RO, Jiang X, Gulati N, Nizza S, Desmarais C, et al. Common clonal origin of central and resident memory T cells following skin immunization. *Nat Med*. (2015) 21:647–53. doi: 10.1038/nm.3860
- Schmidt JD, Ahlstrom MG, Johansen JD, Dyring-Andersen B, Agerbeck C, Nielsen MM, et al. Rapid allergen-induced interleukin-17 and gamma interferon secretion by skin-resident memory CD8+ T cells. *Contact Derm*. (2017) 76:218–27. doi: 10.1111/cod.12715
- Gamradt P, Laoubi L, Nosbaum A, Mutez V, Lenief V, Grande S, et al. Inhibitory checkpoint receptors control CD8+ resident memory T cells to prevent skin allergy. *J Allergy Clin Immunol*. (2019) 143:2147–57.e9. doi: 10.1016/j.jaci.2018.11.048

35. Asarnow DM, Kuziel WA, Bonyhad M, Tigelaar RE, Tucker PW, Allison JP. Limited diversity of $\gamma\delta$ antigen receptor genes of thy-1+ dendritic epidermal cells. *Cell*. (1988) 55:837–47. doi: 10.1016/0092-8674(88)90139-0
36. Havran WL, Allison JP. Developmentally ordered appearance of thymocytes expressing different T-cell antigen receptors. *Nature*. (1988) 335:443–5. doi: 10.1038/335443a0
37. Bergstresser PR, Tigelaar RE, Dees JH, Streilein JW. Thy-1 antigen-bearing dendritic cells populate murine epidermis. *J Invest Dermatol*. (1983) 81:286–8. doi: 10.1111/1523-1747.ep12518332
38. Tschachler E, Schuler G, Hutterer J, Leibl H, Wolff K. Expression of Thy-1 Antigen by Murine Epidermal Cells. *J Invest Dermatol*. (1983) 81:282–5. doi: 10.1111/1523-1747.ep12518326
39. Dupuy P, Heslan M, Fraïtag S, Hercend T, Dubertret L, Bagot M. T-cell receptor- γ/δ bearing lymphocytes in normal and inflammatory human skin. *J Invest Dermatol*. (1990) 94:764–8. doi: 10.1111/1523-1747.ep12874626
40. Toulon A, Breton L, Taylor KR, Tenenhaus M, Bhavsar D, Lanigan C, et al. A role for human skin-resident T cells in wound healing. *J Exp Med*. (2009) 206:743–50. doi: 10.1084/jem.20081787
41. Dyring-Andersen B, Nielsen MM, Geisler C, Bonefeld CM, Skov L. IL-17A- and IFN γ -producing T cells in healthy skin. *Scand J Immunol*. (2016) 83:297–9. doi: 10.1111/sji.12412
42. Nielsen MM, Witherden DA, Havran WL. $\gamma\delta$ T cells in homeostasis and host defence of epithelial barrier tissues. *Nat Rev Immunol*. (2017) 17:733–45. doi: 10.1038/nri.2017.101
43. Jameson J, Havran WL. Skin $\gamma\delta$ T-cell functions in homeostasis and wound healing. *Immunol Rev*. (2007) 215:114–22. doi: 10.1111/j.1600-065X.2006.00483.x
44. MacLeod AS, Havran WL. Functions of skin-resident $\gamma\delta$ T cells. *Cell Mol Life Sci*. (2011) 68:2399–408. doi: 10.1007/s00018-011-0702-x
45. Garman RD, Doherty PJ, Raulet DH. Diversity, rearrangement, and expression of murine T cell gamma genes. *Cell*. (1986) 45:733–42. doi: 10.1016/0092-8674(86)90787-7
46. Heilig JS, Tonegawa S. Diversity of murine gamma genes and expression in fetal and adult T lymphocytes. *Nature*. (1986) 322:836–40. doi: 10.1038/322836a0
47. Holtmeier W, Pfänder M, Hennemann A, Zollner TM, Kaufmann R, Caspary WF. The TCR δ repertoire in normal human skin is restricted and distinct from the TCR δ repertoire in the peripheral blood. *J Invest Dermatol*. (2001) 116:275–80. doi: 10.1046/j.1523-1747.2001.01250.x
48. Jameson JM, Cauvi G, Witherden DA, Havran WL. A Keratinocyte-Responsive TCR Is Necessary for Dendritic Epidermal T Cell Activation by Damaged Keratinocytes and Maintenance in the Epidermis. *J Immunol*. (2004) 172:3573–9. doi: 10.4049/jimmunol.172.6.3573
49. Komori HK, Witherden DA, Kelly R, Sendaydiego K, Jameson JM, Teyton L, et al. Cutting Edge: Dendritic Epidermal $\gamma\delta$ T Cell Ligands Are Rapidly and Locally Expressed by Keratinocytes following Cutaneous Wounding. *J Immunol*. (2012) 188:2972–6. doi: 10.4049/jimmunol.1100887
50. Witherden DA, Ramirez K, Havran WL. Multiple receptor-ligand interactions direct tissue-resident $\gamma\delta$ T cell activation. *Front Immunol*. (2014) 5:602. doi: 10.3389/fimmu.2014.00602
51. Ramirez K, Witherden DA, Havran WL. All hands on DE(T)C: epithelial-resident $\gamma\delta$ T cells respond to tissue injury. *Cell Immunol*. (2015) 296:57–61. doi: 10.1016/j.cellimm.2015.04.003
52. Zhang B, Wu J, Jiao Y, Bock C, Dai M, Chen B, et al. Differential requirements of TCR signaling in homeostatic maintenance and function of dendritic epidermal T cells. *J Immunol*. (2019) 195:4282–91. doi: 10.4049/jimmunol.1501220
53. Born WK, Kemal Aydintug M, O'brien RL. Diversity of $\gamma\delta$ T-cell antigens. *Cell Mol Immunol*. (2013) 10:13–20. doi: 10.1038/cmi.2012.45
54. Wiest DL. Development of $\gamma\delta$ T Cells, the Special-Force Soldiers of the Immune System. In: Bosselut R, Vacchio M, editors. *T-Cell Development-Methods in Molecular Biology*. New York, NY: Humana Press (2016). p. 23–32. doi: 10.1007/978-1-4939-2809-5_2
55. Dieli F, Asherson GL, Sireci G, Dominici R, Gervasi F, Vendetti S, et al. $\gamma\delta$ cells involved in contact sensitivity preferentially rearrange the V γ 3 region and require interleukin-7. *Eur J Immunol*. (1997) 27:206–14. doi: 10.1002/eji.1830270131
56. Dieli F, Ptak W, Sireci G, Romano GC, Potestio M, Salerno A, et al. Cross-talk between V β 8+ and $\gamma\delta$ + T lymphocytes in contact sensitivity. *Immunology*. (1998) 93:469–77. doi: 10.1046/j.1365-2567.1998.00435.x
57. Ptak W, Askenase PW. Gamma delta T cells assist alpha beta T cells in adoptive transfer of contact sensitivity. *J Immunol*. (1992) 149:3503–8.
58. Jiang X, Park CO, Sweeney JG, Yoo MJ, Gaide O, Kupper TS. Dermal $\gamma\delta$ T cells do not freely re-circulate out of skin and produce IL-17 to promote neutrophil infiltration during primary contact hypersensitivity. *PLoS ONE*. (2017) 12:1–20. doi: 10.1371/journal.pone.0169397
59. Nielsen MM, Dyring-Andersen B, Schmidt JD, Witherden D, Lovato P, Woetmann A, et al. NKG2D-dependent activation of dendritic epidermal T cells in contact hypersensitivity. *J Invest Dermatol*. (2015) 135:1311–9. doi: 10.1038/jid.2015.23
60. Fujita M, Miyachi Y, Nakata K, Imamura S. $\gamma\delta$ T-cell receptor-positive cells of human skin. II Appearance in delayed-type hypersensitivity reaction. *Arch Dermatol Res*. (1993) 285:436–40. doi: 10.1007/BF00372140
61. Nordlind K, Lidén S. Gamma/delta T cells and human skin reactivity to heavy metals. *Arch Dermatol Res*. (1995) 287:137–41. doi: 10.1007/BF01262321
62. Dyring-Andersen B, Skov L, Løvendorf MB, Bzorek M, Søndergaard K, Lauritsen JPH, et al. CD4+ T cells producing interleukin (IL)-17, IL-22 and interferon- γ are major effector T cells in nickel allergy. *Contact Derm*. (2013) 68:339–47. doi: 10.1111/cod.12043
63. Sullivan S, Bergstresser PR, Tigelaar RE, Streilein JW. Induction and regulation of contact hypersensitivity by resident, bone marrow-derived, dendritic epidermal cells: Langerhans cells and Thy-1+ epidermal cells. *J Immunol*. (1986) 137:2460–7.
64. Welsh EA, Kripke ML. Murine Thy-1 + dendritic epidermal cells induce immunologic tolerance *in vivo*. *J Immunol*. (1990) 144:883–91.
65. Guan H, Zu G, Slater M, Elmets C, Xu H. $\gamma\delta$ T cells regulate the development of hapten-specific CD8+ effector T cells in contact hypersensitivity responses. *J Invest Dermatol*. (2002) 119:137–42. doi: 10.1046/j.1523-1747.2002.01830.x
66. Girardi M, Lewis J, Glusac E, Filler RB, Geng L, Hayday AC, et al. Resident skin-specific gammadelta T cells provide local, nonredundant regulation of cutaneous inflammation. *J Exp Med*. (2002) 195:855–67. doi: 10.1084/jem.20012000
67. Huber H, Descosy P, van Brandwijk R, Knop J. Activation of murine epidermal TCR-gamma delta+ T cells by keratinocytes treated with contact sensitizers. *J Immunol*. (1995) 155:2888–94.
68. Gray EE, Suzuki K, Cyster JG. Cutting Edge: Identification of a Motile IL-17–Producing $\gamma\delta$ T Cell Population in the Dermis. *J Immunol*. (2011) 186:6091–5. doi: 10.4049/jimmunol.1100427
69. Sumaria N, Roediger B, Ng LG, Qin J, Pinto R, Cavanagh LL, et al. Cutaneous immunosurveillance by self-renewing dermal $\gamma\delta$ T cells. *J Exp Med*. (2011) 208:505–18. doi: 10.1084/jem.20101824
70. Yihua C, Xiaoyan S, Chuanlin D, Chunjian Q, Kejia L, Xia L, et al. Pivotal Role of Dermal IL-17-producing $\gamma\delta$ T Cells in Skin Inflammation. *Immunity*. (2011) 35:596–610. doi: 10.1016/j.immuni.2011.08.001.Pivotal
71. Tamaki K, Fujiwara H, Katz SI. The Role of Epidermal Cells in the Induction and Suppression of Contact Sensitivity. *J Invest Dermatol*. (1981) 76:275–8. doi: 10.1111/1523-1747.ep12526115
72. Koenecke C, Czeloth N, Bubke A, Schmitz S, Kissenpfennig A, Malissen B, et al. Alloantigen-specific de novo-induced Foxp3+ Treg revert *in vivo* and do not protect from experimental GVHD. *Eur J Immunol*. (2009) 39:3091–6. doi: 10.1002/eji.200939432
73. Lewis JM, Girardi M, Roberts SJ, Barbee SD, Hayday AC, Tigelaar RE. Selection of the cutaneous intraepithelial $\gamma\delta$ + T cell repertoire by a thymic stromal determinant. *Nat Immunol*. (2006) 7:843–50. doi: 10.1038/n1363
74. Boyden LM, Lewis JM, Barbee SD, Bas A, Girardi M, Hayday AC, et al. Skint1, the prototype of a newly identified immunoglobulin superfamily gene cluster, positively selects epidermal $\gamma\delta$ T cells. *Nat Genet*. (2008) 40:656–62. doi: 10.1038/ng.108
75. Barbee SD, Woodward MJ, Turchinovich G, Mention JJ, Lewis JM, Boyden LM, et al. Skint-1 is a highly specific, unique selecting component for epidermal T cells. *Proc Natl Acad Sci USA*. (2011) 108:3330–5. doi: 10.1073/pnas.1010890108
76. Petersen TH, Jee MH, Gadsbøll ASØ, Schmidt JD, Sloth JJ, Sonnenberg GF, et al. Mice with epidermal filaggrin deficiency show increased immune

- reactivity to nickel. *Contact Derm.* (2019) 80:139–48. doi: 10.1111/cod.13153
77. Sandrock I, Reinhardt A, Ravens S, Binz C, Wilharm A, Martins J, et al. Genetic models reveal origin, persistence and nonredundant functions of IL-17-producing $\gamma\delta$ T cells. *J Exp Med.* (2018) 215:3006–18. doi: 10.1084/jem.20181439
 78. Sharp LL, Jameson JM, Cauvi G, Havran WL. Dendritic epidermal T cells regulate skin homeostasis through local production of insulin-like growth factor 1. *Nat Immunol.* (2005) 6:73–9. doi: 10.1038/ni1152
 79. Witherden DA, Verdino P, Rieder SE, Garijo O, Robyn E, Teyton L, et al. The adhesion molecule JAML is a costimulatory receptor for epithelial gammadelta T cell activation. *Science.* (2010) 329:1205–1210. doi: 10.1126/science.1192698
 80. Yoshida S, Mohamed RH, Kajikawa M, Koizumi J, Tanaka M, Fugo K, et al. Involvement of an NKG2D ligand H60c in epidermal dendritic T cell-mediated wound repair. *J Immunol.* (2012) 188:3972–9. doi: 10.4049/jimmunol.1102886
 81. Macleod AS, Witherden DA, Wendy L, Macleod AS, Hemmers S, Garijo O, et al. Dendritic epidermal T cells regulate skin antimicrobial barrier function. *J Clin Invest.* (2013) 123:4364–74. doi: 10.1172/JCI70064
 82. Keyes BE, Liu S, Asare A, Naik S, Levorse J, Polak L, et al. Impaired epidermal dendritic T cell signaling slows wound repair in aged skin. *Cell.* (2016) 167:1323–38.e14. doi: 10.1016/j.cell.2016.10.052
 83. Liu Z, Liang G, Gui L, Li Y, Liu M, Bai Y, et al. Weakened IL-15 production and impaired mTOR activation alter dendritic epidermal T cell homeostasis in diabetic mice. *Sci Rep.* (2017) 7:6028. doi: 10.1038/s41598-017-05950-5
 84. Ø Gadsbøll AS, Jee MH, Funch AB, Alhede M, Mráz V, Weber JF, et al. Pathogenic CD8+ epidermis-resident memory T cells displace dendritic epidermal T cells in allergic dermatitis. *J Invest Dermatol.* (2019) 140:806–15.e5. doi: 10.1016/j.jid.2019.07.722
 85. Chodaczek G, Papanna V, Zal MA, Zal T. Body-barrier surveillance by epidermal $\gamma\delta$ TCRs. *Nat Immunol.* (2012) 13:272–82. doi: 10.1038/ni.2240
 86. Verdino P, Witherden DA, Ferguson MS, Corper AL, Schiefner A, Havran WL, et al. Molecular insights into $\gamma\delta$ T cell costimulation by an anti-JAML antibody. *Structure.* (2011) 19:80–9. doi: 10.1016/j.str.2010.10.007
 87. Witherden DA, Watanabe M, Garijo O, Rieder SE, Sarkisyan G, Cronin SJF, et al. The CD100 receptor interacts with its plexin B2 ligand to regulate epidermal $\gamma\delta$ T cell function. *Immunity.* (2012) 37:314–25. doi: 10.1016/j.immuni.2012.05.026
 88. Ibusuki A, Kawai K, Yoshida S, Uchida Y, Nitahara-Takeuchi A, Kuroki K, et al. NKG2D triggers cytotoxicity in murine epidermal $\gamma\delta$ T cells via PI3K-dependent, Syk/ZAP70-independent signaling pathway. *J Invest Dermatol.* (2014) 134:396–404. doi: 10.1038/jid.2013.353
 89. Zhang C, Xiao C, Dang E, Cao J, Zhu Z, Fu M, et al. CD100-Plexin-B2 promotes the inflammation in psoriasis by activating NF- κ B and the inflammasome in keratinocytes. *J Invest Dermatol.* (2018) 138:375–83. doi: 10.1016/j.jid.2017.09.005
 90. Verdino P, Witherden DA, Havran WL, Wilson IA. The molecular interaction of CAR and JAML recruits the central cell signal transducer PI3K. *Science.* (2010) 329:1210–4. doi: 10.1126/science.1187996
 91. Raulet DH, Gasser S, Gowen BG, Deng W, Jung H. Regulation of ligands for the NKG2D activating receptor. *Annu Rev Immunol.* (2013) 31:413–41. doi: 10.1146/annurev-immunol-032712-095951
 92. Groh V, Porcelli S, Fabbi IM, Lanier LL, Picker LJ, Anderson T, et al. Human lymphocytes bearing T cell receptor γ/δ are phenotypically diverse and evenly distributed throughout the lymphoid system. *J Exp Med.* (1989) 169:1277–94. doi: 10.1084/jem.169.4.1277
 93. Alaibac M, Morris J, Yu R, Chu AC. T lymphocytes bearing the $\gamma\delta$ T-cell receptor: a study in normal human skin and pathological skin conditions. *Br J Dermatol.* (1992) 127:458–62. doi: 10.1111/j.1365-2133.1992.tb14840.x
 94. Martin SF, Rustemeyer T, Thyssen JP. Recent advances in understanding and managing contact dermatitis. *F1000Res.* (2018) 7:F1000 Faculty Rev-810. doi: 10.12688/f1000research.17242.1

Conflict of Interest: The authors declare that the research was conducted in the absence of any commercial or financial relationships that could be construed as a potential conflict of interest.

Copyright © 2020 Mráz, Geisler and Bonefeld. This is an open-access article distributed under the terms of the Creative Commons Attribution License (CC BY). The use, distribution or reproduction in other forums is permitted, provided the original author(s) and the copyright owner(s) are credited and that the original publication in this journal is cited, in accordance with accepted academic practice. No use, distribution or reproduction is permitted which does not comply with these terms.