

# HENRY

Hydraulic Engineering Repository

Ein Service der Bundesanstalt für Wasserbau

---

Conference Paper, Published Version

**Dorfmann, Clemens; Redtenbacher, Matthias; Zenz, Gerald**  
**Investigating the sediment transport processes in a river meander**

Zur Verfügung gestellt in Kooperation mit/Provided in Cooperation with:  
**TELEMAC-MASCARET Core Group**

---

Verfügbar unter/Available at: <https://hdl.handle.net/20.500.11970/104332>

Vorgeschlagene Zitierweise/Suggested citation:

Dorfmann, Clemens; Redtenbacher, Matthias; Zenz, Gerald (2015): Investigating the sediment transport processes in a river meander. In: Moulinec, Charles; Emerson, David (Hg.): Proceedings of the XXII TELEMAC-MASCARET Technical User Conference October 15-16, 2029. Warrington: STFC Daresbury Laboratory. S. 8-8.

**Standardnutzungsbedingungen/Terms of Use:**

Die Dokumente in HENRY stehen unter der Creative Commons Lizenz CC BY 4.0, sofern keine abweichenden Nutzungsbedingungen getroffen wurden. Damit ist sowohl die kommerzielle Nutzung als auch das Teilen, die Weiterbearbeitung und Speicherung erlaubt. Das Verwenden und das Bearbeiten stehen unter der Bedingung der Namensnennung. Im Einzelfall kann eine restriktivere Lizenz gelten; dann gelten abweichend von den obigen Nutzungsbedingungen die in der dort genannten Lizenz gewährten Nutzungsrechte.

Documents in HENRY are made available under the Creative Commons License CC BY 4.0, if no other license is applicable. Under CC BY 4.0 commercial use and sharing, remixing, transforming, and building upon the material of the work is permitted. In some cases a different, more restrictive license may apply; if applicable the terms of the restrictive license will be binding.



# Investigating the sediment transport processes in a river meander

Clemens Dorfmann<sup>1</sup>, Matthias Redtenbacher<sup>1</sup>, Gerald Zenz<sup>1</sup>

<sup>1</sup>Institute of Hydraulic Engineering and Water Resources,  
Graz University of Technology,

Stremaygasse 10/II, A-8010 Graz

Corresponding author: Clemens Dorfmann, clemens.dorfmann@tugraz.at

**Proposed session:** *River, estuaries, maritime, coastal sediment processes*

**Keywords:** Telemac-2D, Telemac-3D, secondary currents, suspended load transport modelling

**Speaker:** Clemens Dorfmann

**Abstract:** At the river Drau a river-hydro power plant has to confront severe sedimentation problems. In the river meander (Figure 1), which represents only a section of the reservoir, guide walls have been constructed as well as dredging activities have been carried out in order to facilitate the suspended load transport and to prevent the disordered deposition of sediments. However the bed elevation measurements carried out in recent years indicate that additional measures have to be adopted in order to reduce the sedimentation. The scope of the work presented herein is the evaluation of different construction measures in the river meander by means of numerical modelling. The numerical modelling is supported by high-resolution multibeam echosounding data and ADCP velocity measurements. To assess the performance of the different measures, one idea is, to run suspended load transport simulations using synthetic concentrations as well as sediment inflows and to evaluate the sediment outflows.

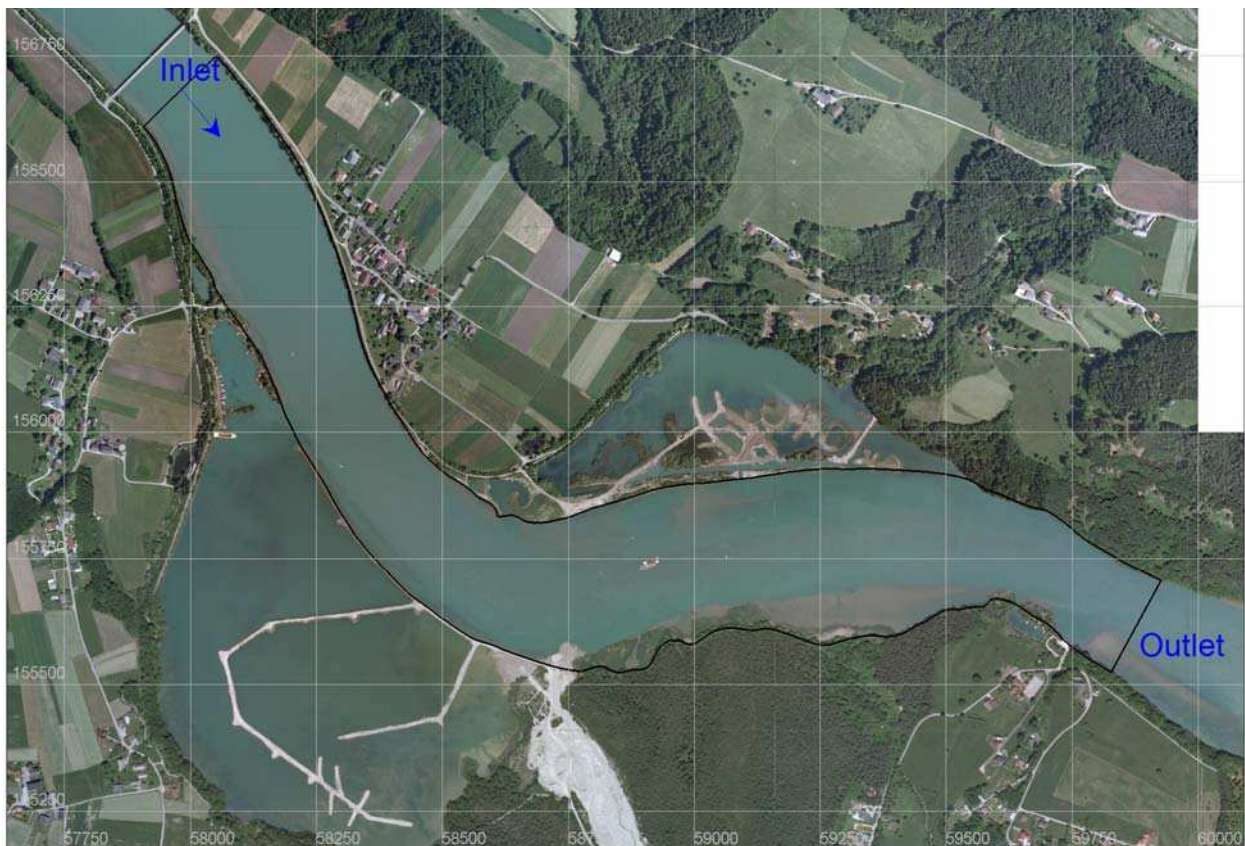


Figure 1 : Project area, (image source : Verbund VHP)