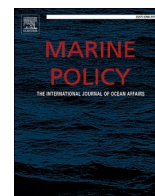


Contents lists available at [ScienceDirect](http://www.sciencedirect.com)

Marine Policy

journal homepage: <http://www.elsevier.com/locate/marpol>

Supporting the essential - Recommendations for the development of accessible and interoperable marine biological data products

D. Lear^{a,*}, P. Herman^b, G. Van Hoey^c, L. Schepers^d, N. Tonné^e, M. Lipizer^f, F. E. Muller-Karger^g, W. Appeltans^h, W.D. Kisslingⁱ, N. Holdsworth^j, M. Edwards^a, E. Pecceu^c, H. Nygård^k, G. Canonico^l, S. Birchenough^m, G. Graham^a, K. Deneudt^d, S. Claus^d, P. Oset^d

^a Marine Biological Association, Citadel Hill, Plymouth, UK

^b Deltares, Boussinesqweg 1, 2629 HV Delft, the Netherlands

^c Research Institute for Agriculture, Fisheries and Food, Ankerstraat 1, 8400, Oostende, Belgium

^d Flanders Marine Institute, Wandelaarkaai 7, 8400 Oostende, Belgium

^e EMODnet Secretariat, InnovOcean Site, Wandelaarkaai 7, 8400 Oostende, Belgium

^f Istituto Nazionale di Oceanografia e di Geofisica Sperimentale, Borgo Grotta Gigante 42/C, 34010, Sgonico TS, Italy

^g University of South Florida, 4202 E Fowler Ave, Tampa, FL 33620, USA

^h Intergovernmental Oceanographic Commission of UNESCO, Wandelaarkaai 7, 8400 Oostende, Belgium

ⁱ Institute for Biodiversity and Ecosystem Dynamics (IBED), University of Amsterdam, P.O. Box 94240, 1090 GE, Amsterdam, The Netherlands

^j International Council for the Exploration of the Seas, H. C. Andersens Blvd. 46, 1553 København, Denmark

^k Finnish Environment Institute, Latokartanonkaari 11, 00790 Helsinki, Finland

^l National Oceanic and Atmospheric Administration, 1315 East-West Highway 2nd Floor, Silver Spring, MD 20910, USA

^m Cefas, Pakefield Rd, Lowestoft, UK

ARTICLE INFO

Keywords:

Biodiversity
Data
Data products
Stakeholder engagement
EOV
EBV

ABSTRACT

In this paper we outline the stakeholder-led approaches in the development of biological data products to support effective conservation, management and policy development. The requirements of a broad range of stakeholders and iterative, structured processes framed the development of tools, models and maps that support the FAIR (Findable, Accessible, Interoperable, Reusable) data principles. By structuring the resultant data products around the emerging biological Essential Ocean Variables, and through the engagement with a broad range of end-users, the EMODnet (European Marine Observation and Data Network) Biology project has delivered a suite of demonstration data products. These products are presented in the European Atlas of Marine Life, an online resource demonstrating the value of open marine biodiversity data and help to answer fundamental and policy-driven questions related to managing the natural and anthropogenic impacts in European waters.

1. Introduction

The need for effective management and custodianship of our seas has never been greater, as highlighted by specific targets for the marine environment within Goal 14 of the UN Sustainable Development Goals [1], multiple Aichi Targets [2], the UN declaration of a Decade of Ocean Science for Sustainable Development (2021–2030) and increasing public awareness on the anthropogenic impacts on the marine environments [3,4]. Societal benefits of ocean observation and data include supporting human health, safety and economy through improved understanding of the changes in marine ecosystems [5], the status of living resources and the current health of the oceans. Knowledge of the marine environment

is essential to draft national and global policy agendas, such as the ocean-related Sustainable Development Goals [6], and to inform global ocean assessments and conservation targets (e.g., IPBES, World Ocean Assessment, CBD Aichi targets). In addition, the increased knowledge about the Earth's system and climate change helps to prepare society for natural risks, such as storms, droughts, rainfall anomalies and wet seasons [7,8].

These drivers require marine baseline data, especially biological data combined with physical and chemical parameters, to create effective, evidence-based information that is critical to support conservation and management of the marine environment. However, collecting robust and fit for purpose evidence in the marine environment is logistically

* Corresponding author.

E-mail address: dble@mba.ac.uk (D. Lear).

<https://doi.org/10.1016/j.marpol.2020.103958>

Received 15 March 2019; Received in revised form 20 March 2020; Accepted 23 March 2020

Available online 29 April 2020

0308-597X/© 2020 The Authors. Published by Elsevier Ltd. This is an open access article under the CC BY license (<http://creativecommons.org/licenses/by/4.0/>).

challenging, complex and expensive. The complexity is aggravated by the irreversibility of time. When new management and policy issues surface, historical time series suitable for detecting changes and effects of management policies are often lacking or of insufficient quality. This is especially true for biodiversity data, where data series are often too short to avoid the problem of ‘shifting baselines’, suitable control areas (e.g. areas without fishing pressure) are lacking and indicator development and application are limited because the necessary data have not been collected in the past. There is a growing need to assemble, standardize and make available whatever historic data on the marine ecosystem are available, in order to fill this gap in reference data.

1.1. EMODnet and essential variables

As a first step in this process, the European Marine Observation and Data Network (EMODnet) has undertaken unparalleled activity in the collation and standardisation of marine environmental data from all European seas and the wider North East Atlantic region since 2009 [9, 10] through a series of thematic projects and a coordinating secretariat. EMODnet Biology, the thematic lot on marine biological data, has currently collated and standardised more than 25 million species observations. Significant efforts have also been invested in the adoption and further development of standards, guidelines and best practices for the initial acquisition of biological and biodiversity observations, and their subsequent curation and publication [11–14] and how these can be maintained to meet future challenges [15].

Despite all efforts, it is clear that historic data on marine biodiversity and ecosystems are scattered, incomplete and insufficient for future policy needs in marine management. In order to improve this situation, targeted efforts by the international community have concentrated on the development of Essential Ocean Variables (EOVs) [16–18] to promote cost-effective, interoperable observations across multiple platform types and on Essential Biodiversity Variables (EBVs) to provide information on the traits, health and diversity of organisms and communities [19–21]. Efforts to collate existing historical data should complement this approach, by providing, wherever possible, databased descriptions of past conditions that are consistent with these selected variables and monitoring strategies.

Whilst these future-oriented approaches are valuable, a dedicated EMODnet Biology workstream on outreach and stakeholder engagement revealed an imminent need, amongst a broad range of stakeholders and communities, for scalable, information-rich data products describing past and present states of the marine system. A diversity of policy and operational needs have been identified. Emphasis was placed on the need to enable comparisons across member states and sea basins. Through being based on transparent (open-access) data and international standards, the products are requested to be interoperable, reproducible and as such facilitate the (re)creation of similar products across governments, regulatory authorities, academia, NGOs and industry.

In this paper we aim to showcase and analyse the work of EMODnet Biology in the development of stakeholder-led data products to support conservation, management and advisory decisions by regulators, industry and policy makers. Following a definition of the term ‘Data Product’ we explain the steps taken to ensure the resultant products are meeting specific use-cases, derived from a range of stakeholder engagement exercises and through the synthesis of previous exercises in reviewing the availability and applicability of marine biological data. We critically review the development of these products and illustrate what improvements could be achieved in subsequent iterations. The EMODnet Biology Engagement Lifecycle (Fig. 1) summarises the ongoing approach and methodology.

2. What is a data product?

In order to ensure a common understanding with stakeholders,

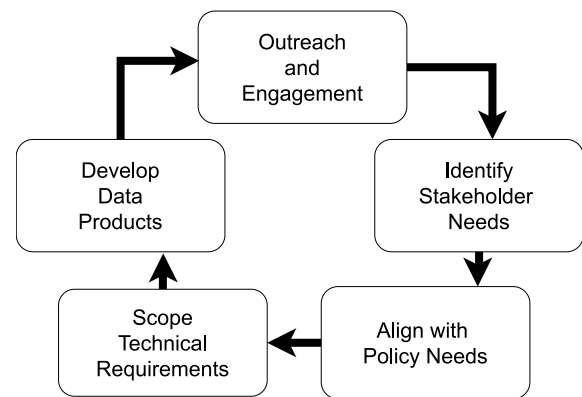


Fig. 1. EMODnet biology data product engagement lifecycle.

policy makers and the academic community it is vital that all parties can agree on what constitutes a biological data product.

The Remote Sensing community has a well-defined system for the definition of data products [22], but no similar standards exist for the ecological communities. Within EMODnet Biology a common set of definitions is essential to streamline development and to ensure stakeholders are working to a common set of standards in order to fulfil wider expectations.

The EU Horizon 2020 funded ENVRI Plus project sought to develop a common, cross-Research Infrastructure approach within the environmental science domain. Central to this is a standard Reference Model (<https://confluence.egi.eu/display/EC/ENVRI+Referenc+Model>). Within the context of the ENVRI Plus Reference Model a data product is ‘an instance of persistent [meta]data which has been processed to be offered to external users.’ [23]. This approach to defining data products has also been adopted by the Research Data Alliance based on the guidelines from DataONE (<https://www.dataone.org/best-practices/subscribe-method-create-derived-data-products>).

2.1. Data product categorisation

As a single definition this is adequate, however the range of potential data and data products required within the marine ecology community requires a tiered approach to describing a data product. EMODnet has developed a series of categories defining data and data products based on the amount of processing and/or analysis that has taken place to come to a particular level, as defined in Table 1. These categorisations align with the suggestions for EBV data products as outlined in Kissling et al., [20]. In the case of EMODnet each data category (from 0 to 4) implies an increased amount of processing and quality control with regards to the previous level(s), ranging from raw data to harmonized collections of thematic quality controlled (QC'd) data. Additionally, two categories of data products (from 5 to 6) are also defined according to the complexity of the processing needed. Data products of Level 5 (a,b and c) display the modelled distribution of a single parameter (e.g. species occurrence or abundance, chlorophyll), built upon QC'd data from levels described previously. Data products of Level 6 are the result of multi-variate modelling that may include both data and data products as inputs (e.g. predicted seabed habitats).

These categories have been developed as part of an effort undertaken to compile the current offer available across the EMODnet thematic lots in the EMODnet Data and Data Product Portfolio [24]. The definitions serve as a basis for communication among the seven EMODnet themes as well as with the wider community to help users to better understand the different types of available data and data products that could be used or deployed for multiple purposes and applications. The portfolio is a living document that will be updated regularly, through the EMODnet Central portal.

Table 1

Categories of Data Products as defined by EMODnet and developed by EMODnet Biology partners. *Note that data from EMODnet Biology are only distributed from L2 and above.

Level	Definition	Example
DATA		
L0	Raw data. Unprocessed instrument data at full resolution, including synchronisation methods (e.g. elimination of CTD up-down duplicates) and excluding communication artefacts	Table with identified plankton species and abundances per water sample, from the Continuous Plankton Recorder (CPR).
L1	Full resolution data reconstructed with calibration coefficients, geo and time-referenced	CPR abundance data, combined with sampling information (time, location) from cruise.*
L2	Geo- and time-referenced processed (derived) data with a minimum QC. Near-real time (NRT) with full spatial and/or temporal resolution.	CPR data that has undergone first quality check.*
L3	Delayed mode data with further QC, usually with some completeness, consistency and space/time uniformity. Data QC checks may include comparison with historical data and/or Level 5 products such as climatologies or gridded data.	Individual EMODnet Biology datasets, for example as IPT (http://ipt.vliz.be/eurobis/). Example for CPR data: http://ipt.vliz.be/eurobis/resource?r=sahfos-cpr-zoo
L4	Collated data from different measurements, samples and/or sources that have been integrated in a data system by means of standardisation and/or categorisation, and subset or otherwise selected or derived to fulfil a specific requirement. Data can represent numerical values and presence/absence of a category or entity. Integration of datasets at this level enables further QC based on parameter to parameter relationships (e.g. TS diagrams)	The combination of datasets available in the EMODnet Biology (EuroBIS) database.
DATA PRODUCT		
L5	Model or analysis output that uses data of Level 2 and/or 3 as input. Data products of this level represent the distribution of a single parameter derived from multiple measurements. Data are aggregated and undergo some level of geo-processing and spatial or temporal interpolation to cover data gaps and/or solve data discrepancies. L5A. One-dimensional distribution of a specific parameter, without variations on the temporal or depth dimensions. L5B. Two-dimensional distribution of a specific parameter, with variations on the spatial or temporal/depth dimensions. L5C. Three-dimensional distribution of a specific parameter.	Plankton gridded abundance map that is the result of temporal aggregation and spatial interpolation.
L6	Derived information from multi-variable model or analysis that has Level 5 data products and/or Level 2–3 data as input. These input data and data products might have been gathered or developed by the thematic lot itself, by other thematic lots or third parties.	The CPR zooplankton observations are being used in a L6 product that combines observations and environmental data to summary the environmental temperatures at which major functional groups (e.g. zooplankton) occur.

3. How data products can support global marine management

There is an increasing need to monitor the marine environment for conservation and legislative reasons which in response encourages global science-driven initiatives for development of state metrics such as ‘Essential Ocean/Biodiversity Variables’ (EOVs and EBVs) for the Global

Ocean Observing System (GOOS) and the Group on Earth Observations Biodiversity Observation Network (GEO BON). The network of EMODnet observations operating in the Atlantic as well as integrated observation programmes such as the EU Horizon 2020 project ‘AtlantOS’ are seen as a critical ongoing network for a sustained and internationally coordinated effort for biological observation at these ocean-basin scales [25].

Biology and ecosystem EOVs are currently in development with input from global experts and cover phytoplankton biomass and diversity; zooplankton biomass and diversity; fish abundance and distribution; marine turtles, birds and mammals abundance and distribution; hard coral cover and composition; seagrass cover and composition; mangrove cover and composition and macroalgal canopy cover and composition and ocean sound [16]; EOv list at <http://gooscean.org/eov>.

3.1. Challenges of indicator development

A key component for the development and then successful uptake of ocean monitoring indicators is the need for the essential variables to have a high impact in responding to scientific and societal needs and crucially are technically and practically sound hence have a high feasibility of sustained observation. These requirements are not necessarily mutually compatible. It is true that ocean observations are the ‘bread and butter’ of ocean and climate change science [26], but the research community does not have the resources to continue observations of variables that are unlikely to lead to new discoveries or scientific breakthroughs. There is a tendency to use advanced instrumentation and to document, describe and quantify newly-discovered and uncertain but potentially important processes. Scientists having to choose between sustained observation of chlorophyll, nutrients and phytoplankton species composition with sufficient spatial and temporal resolution using traditional methods, or application of new methods (e.g. omics, acoustics, optics, etc) as a potential means to automate these measurements, will rarely choose the former as their top priority. Scientific effort concentrates on expanding conceptual frameworks needed to understand new developments in natural systems and link them to governance and global change. This requires comprehensive sets of variables to be measured in order to abstract the most essential variables fit for evaluating policies and management actions. However, science typically works in relatively short cycles (e.g. PhD projects are normally 2 to 4 years) and can, in general, not sustain observations over time periods needed for the evaluation and correction of management policies.

On the European-level policy side, the International Council for the Exploration of the Sea (ICES) and the Regional Sea Commissions (OSPAR, HELCOM, BSC and UNEP-MAP) greatly influence the European science policy landscape. The Commissions are collaboratively implementing ecosystem-based management in their regions to meet the EU Marine Strategy Framework Directive [27] requirements to achieve Good Environmental Status (GES) of European seas by 2020. The legal requirements of the MSFD and Marine Spatial Planning Directive (MSPD) processes necessitate robust and defensible decisions based upon the best available evidence. The environmental monitoring required for implementing the MSFD presents high demands in terms of data collection methodologies, Quality Control and Assurance (QC/QA) and metadata. However, much of the information used to generate evidence is likely to be produced by bodies other than the responsible authorities, who lack the mandate and resources to execute the required monitoring efforts. Being dependent on monitoring and data collection performed by scientists, member states or regional authorities within those member states, the Commissions are forced to rely on heterogeneous and often poorly compatible datasets as a basis for their policies and policy evaluations. Therefore, the pursuit for more harmonized monitoring across member states borders increases the scientific and monetary value of each resulting dataset, support integrated status assessments and increase cost-efficiency [28]. At the other side, the

evidence-generating bodies often lack the resources to utilise raw data and need some kind of readily available and directly useable data sets (Type 4 as defined in Table 1) or products (Type 5–6 as defined in Table 1).

3.2. The role of EMODnet data products

EMODnet data products operate at the intersection of these different agents, interests and constraints. With respect to content, EMODnet Biology data products serve a function to provide historic background on the most important variables within the globally defined Essential Ocean Variables. EMODnet provides some of the critical data infrastructure to allow the distribution of European EOV data and the creation of data products and contributes to and also uses data from global networks such as the Ocean Biogeographic Information System (OBIS) of the International Oceanographic Data and Information Exchange programme (IODE) of IOC-UNESCO.

With respect to policy, governments and public bodies require evidence in a wide range of situations, from long-term policy development to urgent crisis management [29], often with an estimation of uncertainty. In many cases existing data were not purposefully collected to fulfil these needs. New needs arise as the state of the ocean changes (e.g. due to global change), the use of the sea changes (e.g. construction of wind farms, increased sand mining to protect shores, new forms of aquaculture, etc) or the interest of the public to particular aspects changes (e.g. increased importance of emblematic and charismatic species). One of the challenges in preparing data products is to make optimal use of existing data to fulfil these varied needs as much as possible. Ideally, the critical appraisal of the products should feed back into the (re)design of future monitoring programmes.

Since the challenges facing marine and coastal ecosystems are complex, decision making requires integration of new and evolving knowledge in a transparent and accountable manner. Such an approach is exemplified by the EMODnet Seabasin Checkpoint exercises detailed later in this paper, and the global development of EOVs and EBVs. Comparison between the policy needs and the availability of data and data products can lead to more informed and efficient environmental monitoring assessment strategies with benefits for governments, industry, society and the economy. Transparency, the flexibility to incorporate interdisciplinary and multi-sector datasets and the ability to visualise the decision-making process result in a powerful framework to support discussions with experts, stakeholders and policy makers [30].

4. Informing the discussion – the EMODnet Checkpoint Data Adequacy Reports

The EMODnet Sea-Basin Checkpoints exercises (<http://www.emodnet.eu/checkpoints>) were carried out to test the quality of the currently available observation data. These “Checkpoints” evaluate EMODnet-held data at the scale of regional sea-basins (Arctic, Atlantic, Baltic Sea, Black Sea, Mediterranean Sea, North Sea) by testing the data availability and quality against specific pre-defined end-user ‘challenges’. Common challenges were evaluated in all basins for 7 maritime applications, which were of an economic nature (wind farm, oil platforms, fisheries) or directly related to conservation policy (Marine Protected areas, eutrophication, alien species and river input).

4.1. Approach of the data adequacy reports

As part of the stakeholder engagement, as outlined in Section 4.3 below and to inform the development of data products with an end-user-centric approach, the Data Adequacy Reports [31–35], generated for the Sea-Basin checkpoint exercises were evaluated by the authors for biological data and product needs. These reviews were then used to identify data and data product gaps which, if met, would support the development of these challenges at the aforementioned sea-basin scales.

Therefore, we listed for each challenge what type of biological data (species, abundance or biomass data for certain ecosystem component) and data products (spatial maps, modelling, time series) were needed (Table 2).

Despite the common outline of the challenges (detailed below), they were tackled differently over the sea-basins. Existing data and products were used for some basins (Baltic, North Sea), whereas other basins mainly looked to potential data and known data gaps that need to be gathered and filled.

4.2. Summarising the checkpoint exercises

Our summary of the Checkpoint exercises (Table 2) shows that in relation to biological data needs, data about mammals, fish, birds and phytoplankton are most requested. Indirectly, sea-bottom fauna data are needed to construct habitat maps for the sea-basins. Spatial distribution maps and phytoplankton time-series were identified as data products that are requested to address several of the challenges.

For two of the challenges, bathymetric maps and coastal protection, the ecological aspects were not specified in the objective definition and therefore not further considered in detail. The *wind farm siting* challenge aimed to identify potential new wind farm sites, considering generating capacity, construction and maintenance, potential environment impacts and current sea-use factors. To serve this challenge, there was a clear requirement for distribution maps for cetaceans and seabirds and additionally, data on population characteristics (including migration) as summarised in Table 2.

For the *Marine Protected Area (MPA)* challenge spatial maps of ecologically important species (e.g. HELCOM, OSPAR species lists of ecologically important marine species) were needed to gain an understanding of whether the ecological coherence of a network of MPAs is robust enough to represent a series of processes and patterns that are reflecting the ecological nature and overall processes taking place in the wider environment.

The challenge relating to an *oil platform leak* was to determine the likely trajectory of the slick resulting from a (simulated) leak at an oil platform and the likelihood that sensitive coastal habitats, species or tourist beaches would be impacted. For this challenge, there was nothing reported on sensitive coastal habitats or species, except for the Arctic, where spatial maps of the occurrence of certain charismatic megafauna (birds, cetaceans, polar bears) can be helpful.

To serve the *climate change* challenge temporal data for selected climate (temperature, internal energy, ice and phytoplankton [not in North Sea – Med]) and coastal (sea level rise, sediment balance) variables were requested. The only biotic variable, phytoplankton time series were mostly available in the sea-basins, but were found to be both temporally and spatially ‘patchy’ (only present for certain sub-areas), resulting in a low confidence to predict climate related changes of the ecosystem on sea basin scale.

The *fisheries management* challenge aimed to produce basin-wide statistics on biomass, number of landings of commercial fish discards and bycatch (of fish, mammals, reptiles and seabirds) by species and year. Those fishery statistics were available for most sea-basins, however the collected data on fisheries discards and/or bycatch are less readily available (including fragmented or missing data on protected, endangered and threatened species) than commercial landings or catch data.

The *fisheries impact challenge* sought to evaluate where seabed habitats have been disturbed by bottom trawling (numbers of disturbances per month and how this changes over the past ten years) and damage to sea floor to both living and non-living components (Arctic). This challenge could not be met for the biological components, due to inadequate data (and product) availability at the time. The availability of data has increased since the Checkpoint exercise, but much still remains inaccessible. In all the sea-basins, well known issues related to fisheries data were mentioned (data limitations, resolution, gaps in the data with regard to fisheries discards, by-catch and spatial activity, fragmented data

Table 2

Overview of the biological data and product needs when executing the EMODnet Sea-Basin Checkpoint exercises. NC.: not considered; SO: species occurrence; D: density/biomass; P: population (behaviour, reproduction); div: diversity; SM: spatial maps; TS: time series, O: other (migration); ?: not specified.

Challenges	DATA						PRODUCTS					
	Arctic	Atlantic	Baltic	Black Sea	Med Sea	North Sea	Arctic	Atlantic	Baltic	Black Sea	Med Sea	North Sea
Wind Farm Siting	NC	Birds	Ecosystem	NC	Birds, Fish	Birds, Cetaceans	NC	?	SM, TS, O	NC	?	SM
Marine Protected Areas	NC	SO, D, P Birds, Cetaceans, Fish	SO, D HELCOM Red List	Ecosystem	P, D, Div Ecosystem	SO, P OSPAR spp.	NC	SM, O	SM	?	?	SM
Oil Platform Leak	Birds, Cetaceans, Polar Bears	NC	NC	NC	NC	NC	SM	NC	NC	NC	NC	NC
Climate Change ^a	Phyto D	Phyto D	Phyto D	Phyto D	NC	NC	TS	TS	SM, TS	TS	NC	NC
Fisheries Management	Fisheries Statistics						SM, TS					
Fisheries Impact ^b	Not Possible	Not Possible	Habitats	Fisheries Statistics	NC	NC	?	?	SM	?	NC	NC
Riverine Input	Salmon, Eel	Salmon, Eel	Salmon	NC	Fish	Salmon, Eel	Not Possible	O	No Info	NC	?	SM
Alien Species	D SO	D Ecosystem	Ecosystem	Zooplankton	D NC	D NC	SM, TS	?	SM	?	NC	NC
Eutrophication	NC	SO, D, Div NC	SO, P NC	D, Div Phyto D, Div	NC	Ecosystem SO	NC	NC	NC	?	NC	SM, TS

^a Specifically asked for Phytoplankton (Phyto).

^b Check if Fishery Pressure applied (VMS).

and privacy issues).

In relation to the *river inputs* challenge, the data adequacy reports outlined the need for data and products focused on the migration of salmon and eels. Migration data are a clear gap in the classic databases and products, as these types of data are collected by new technologies (E.g. species tagging and the use of biosensors), generating differing types of data.

The objective of the *alien species* challenge was to provide a table and digital map of alien species in each of the sea basins. The available information included: species name; classification (fish, algae, mammals, sponges etc); year of introduction; possible cause or vector of introduction (climate change, ballast water discharge etc); geographical area; impact on ecosystem and economy. In this challenge, products reflecting distributions over time are very useful, but difficult to make, due to lack of comprehensive, comparable datasets, the exception being for *Marzelleria* spp. in the Baltic Sea region.

In the *eutrophication* challenge data adequacy reports, no real focus on biological data was made, as the goal was to check for gridded data layers showing changes in eutrophication (seasonal, over past 10 years). Nevertheless, spatial maps and time series on phytoplankton would be useful in the assessment.

4.3. Stakeholder consultation

In a formal discussion with relevant stakeholders,¹ the EMODnet Biology project further specified data needs and priorities for product development. Even though most participants in the discussion were operating at large scales of regional seas and global initiatives, the need for data and knowledge at a diversity of scales was immediately apparent. Important data gaps were identified in a range of marine policy and management problems. These vary from relatively localized issues such as those arising from restoration assessment and conservation effectiveness, e.g. in restored coastal habitats or Marine Protected Areas, to linked local-regional scale marine spatial planning issues and identification of cumulative impacts on ecosystems to regional-sea scale issues such as eutrophication, fisheries, toxic substances and species invasions. However, even the latter type of issues tightly interacts with more local (national and subnational) policies, e.g. on nutrient and toxicant emissions, harbour policies, economic embedding of the fisheries sector etc., and thus also require the spatial downscaling of information.

In order to provide rational, empirically based policies in all of these domains, the stakeholders identified standardised, interoperable time-series data as being a major data gap. Other gaps identified included

¹ To explore the need of a range of stakeholders involved in environmental conservation, management, ecosystem, environmental and strategic assessments a workshop was organized to collect views and suggestions on relevant data products required for the sustainable use of the sea. A heterogeneous audience coming from the Regional Sea Conventions (OSPAR, HELCOM, UNEP-MAP and BSC), from conservation bodies (UNEP/WCMC, WWF), from the European Environmental Agency (EEA) and from global initiatives (GEO BON, OBIS, MBON) and industry (AECOM) participated in the workshop, contributing with different perspectives on data products needed to support the management of Europe's Regional Seas. To inform these discussions the Checkpoint Data Adequacy Reports review, as summarised above, was presented. Prior to the workshop participants were requested to provide feedback on their current needs for how data should be presented and what gaps were a barrier to their sectors' activities. The full outcomes of the workshop can be reviewed in Lear et al., [49].

data relating to deep sea species and habitats, and data relating to the effects of cumulative impacts on the marine environment. Participants expressed a desire to seamlessly integrate other environmental parameters with the biological data.

There was general consensus that the limiting factor for the provision of biological data products is not the technical format of the data or products, but the heterogeneous nature of the majority of underlying existing biological data. This can partly be overcome by providing high-quality metadata and provenance in order to increase confidence, transparency and traceability. However, it still requires the combination and standardisation of datasets from diverse origins. The provision of worked-up data sets (i.e. Level 4 data products as specified in Table 1) was therefore identified as the top priority.

Modelled presence and absence for key species and functional groups, and map-based data products including habitat maps underpinned by species records for seagrass, macroalgae and habitat condition, have been indicated as very relevant to demonstrate changes in habitat condition over time. This can inform restoration and conservation effectiveness and track changes related to policy developments. In addition, summary information on species listed in legislative documents (eg. Red Lists, Habitats Directive, etc) such as area statistics for different key geographic regions including Regional Seas, Marine Protected Areas and national waters, may facilitate the assessment of trends in environmental status and global ecological changes. The stakeholder participants also strongly advised EMODnet Biology to frame any data products within the context of the emerging biological EOVs and EBVs as outlined above, in order to align with global initiatives and to ensure interoperability between regions.

In line with the diversity of scales in marine policy and management challenges, clear needs were expressed for data products to cover a range of spatial and temporal scales, showing trends and changes over time to assess effective conservation, management and policy measures. These scalable products should, ideally, provide a link between mapped (gridded) biological data results and a diversity of environmental variables and drivers, while keeping the underlying data (e.g. occurrence of species or habitat types) visible. In addition, products demonstrating the relative importance of diverse habitat-determining variables for biodiversity could contribute to coherent data-driven story-telling, which underlies policy development. Assessing policies, especially when some spatial variation in the applied policies exist, can profit most from (spatially differentiated) time series analysis.

However, it is very clear that 'contributing to answering policy questions' is very distinct from directly answering these questions. Governance bodies such as Regional Sea Commissions have a need and obligation to tightly control the validity of the indicators used to evaluate policies. As such they cannot depend on external organisations or projects such as EMODnet Biology to fill in this essential part of their tasks. It is therefore imperative that the products of EMODnet Biology are as neutral as possible with respect to the questions and answers regarding policy. EMODnet's niche in the process is to provide the data and products needed to calculate the value of indicators and to establish temporal trends in these indicators. The choice of indicators and especially the final evaluation is outside this task.

These recommendations, taken in the context of the global, societal needs and informed by the gaps expressed through the Checkpoint Data Adequacy Reports, have led to the coordinated development of the European Atlas of Marine Life. This innovative showcase for EMODnet Biology data products delivers the tools, models and maps, demonstrating the value of open biodiversity data.

5. EMODnet biological data products, their relevance and utility

The EMODnet Biology data products were developed as example applications addressing, as much as possible, the diversity of requirements expressed during the stakeholder consultation. We aimed to cover the different types of data products, the different European

regional seas, and several of the most important EOVs in these example products. An important aim was also to establish workflows for biodiversity data integration [20] that can be re-used for the preparation of further data products in the future. In order to ensure that products align with FAIR guidelines [36], all workflows are made publicly available.² All products, including details of data used and procedures applied, are documented in the European Atlas of Marine Life website. Table 3 provides a short overview of the products.

All data products have been worked up to level Level L5B or L6 (as defined in Table 1), depending on whether some modelling was involved or not. Most products are based on more than one underlying data set, and all involve the compilation of a level L4 data layer at the basis of the analysis. These level L4 data layers are either directly available through the Github site, or following the procedures outlined in the workflow there.

5.1. Critique of gridded data products

A central data product of EMODnet Biology are gridded maps of species occurrences, as derived from the EurOBIS database. All species occurrences recorded in EMODnet, as well as other data, are stored in this database. It provides overviews or known places of occurrence for thousands of species. Combining this information with societal traits stored in WoRMS,³ such as invasiveness, protection status, status as endangered species, etc. can provide overviews of sensitive areas and areas with high known occurrences of species with special protection status. This is of direct relevance to conservation policy, choice of marine protected areas, project development and selection of areas where fishing disturbance should be reduced.

The major shortcoming of this dataset of gridded maps is that illustrating the uncertainty of these data products is not trivial. The maps only records affirmed positives, i.e. well-established places of occurrence, but that it gives no information on the nature of the absences. Places where a species has not been recorded can fall into two categories: either the species is absent, or the species has not been observed although in reality it is present. These false negatives are not unlikely. An option for how to visualise the uncertainty of gridded maps showing species presences is to in parallel show information on the sampling effort to give hints on the spatial and temporal coverage of data. This message is illustrated for the Southern Bight of the North Sea, which is a well-sampled area, illustrating that available presence records are very unevenly spread in space. Fig. 2C illustrates the spatial distribution, gridded on a 0.05 (longitude) x 0.1 (latitude) degrees grid, of the number of 'sampling events' of macrobenthos per grid cell. For this map, all campaigns targeting pelagic, epibenthic or meiobenthic groups have been excluded. Also records of single species, such as museum collections, have been excluded as they provide no basis for estimating diversity of the assemblage. Relatively large areas of the Southern Bight are represented in the database by very few samples, whereas some areas are sampled much more intensively (Fig. 2C). Areas known to be 'special', i.e. having rare species or exceptionally high species diversity (Fig. 2A shows the average number of species per sample and highlights some of these areas), are generally well sampled. However, there is considerable chance that this common knowledge overlooks high-value habitats in those areas where hardly any samples are available at all. The frequency distribution of number of samples per grid cell (Fig. 2B) is approximately log-normal, indicating that a large proportion of sampling and monitoring effort goes to a small proportion of the area. Although over 30,000 samples are recorded in the database, these only cover approximately one-third of the grid cells (2200 out of 6400). It is encouraging, however, that compared to many other regions which

² See the EMODnet Github site <http://github.com/search?q=topic%3Abiology+org%3AEMODnet&type=Repositories>.

³ World Register of Marine Species <http://www.marinespecies.org>.

Table 3
EMODnet Biology Data Products. Full metadata and citations are available through the European Atlas of Marine Life.

Product	Supported EOVS/ Audience	EMODnet Product Category	Impact/Importance	Issues Addressed	Doi
Gridded abundance maps of various species/groups	All EOVS	L5B	Evolution and distribution of key species/species groups.	Marine Spatial planning, Fisheries, Habitat specifications	
Neural network modelling of Baltic zooplankton abundances	Zooplankton abundance	L5B	Predicted gridded abundance maps of zooplankton in Baltic Sea, based on multiple sampling campaigns and using environmental information for abundance modelling	Marine Spatial planning, Eutrophication, Invasive Species	https://doi.org/10.14284/381
Distribution of fish living modes in European seas	Fish abundance and distribution	L5B	Distributions of the main functional types of benthic and benthopelagic fish species.	Marine Habitats specification	https://doi.org/10.14284/374
Distribution of benthic macroinvertebrate living modes in European seas	Benthic invertebrate abundance and distribution	L6	Distributions of the main functional types of benthic macroinvertebrates	Marine Habitats specification Fisheries policies, related to fishing pressure on benthos	https://doi.org/10.14284/373
Thermal affinities for European marine species	All EOVS	L6	Shows temperature and vulnerability to temperature change of species.	Global change effects on marine ecosystems	https://doi.org/10.14284/378
OOPS - Copepods: ICES Operational Oceanographic Products and Services - Gridded Copepod abundance data	Zooplankton biomass and diversity	L5B	Zooplankton data of Continuous Plankton Recorder in N.Atlantic, used to illustrate temporal change in spatial patterns. ICES uses this product in their Operational Oceanographic Products and Services (OOPS)	Global change, regime shifts in marine ecosystems	https://doi.org/10.14284/380
Invasive marine species occurring in European marine harbours	All EOVS	L6	Use EMODnet Biology and EUROBIS occurrence data of invasive species to check for false negatives in samples of invasive species in harbours	Basis for ballast water policy, Exemption policy from ballast water checks	https://doi.org/10.14284/375
Temporal trend of invasive species <i>Marezzellaria</i> in the Baltic Sea	Benthic invertebrate abundance and distribution	L5B	Temporal trend of invasive species	Invasive species	
Phytoplankton community analysis in the Northern and Middle Adriatic	Phytoplankton community composition	L5B	Show temporal patterns in species and species groups, and interpret in terms of seasonality and long-term trend	Eutrophication Pollution	https://doi.org/10.14284/377 https://doi.org/10.14284/376
Temporal trend of algal toxicity along the French coast	Phytoplankton community composition	L5B	Show spatio-temporal distribution of toxic algae along French coast	Eutrophication Pollution	
Long term zooplankton time series analysis from Villefranche, Western Mediterranean	Zooplankton biomass and diversity	L5B	Show temporal patterns in species and species groups, and interpret in terms of seasonality and long-term trend	Eutrophication, Pollution	https://doi.org/10.14284/379

often lack recent data, most of the observations here are relatively recent, with the most recent sample per grid cell coming most often from the past decade (Fig. 2D).

5.2. Traits-based approaches

The vast number of taxa encountered in the sea creates an obvious problem for the use of species distribution maps directly in policy analysis. One cannot judge the appropriateness of certain policies against occurrence maps of thousands of species, most of which have only been observed once or a relatively few times. Some form of information condensation is essential, as done through the development of indicators. A bewildering number of indicators have been proposed in the scientific literature [37]. Many of these are based on species abundance patterns, although recently the use of ecological traits of species has been proposed as an alternative approach [21,38], including life-history traits of benthic species related to sediment disturbance by fisheries [39,40], as well as to water quality and eutrophication [41,42]. Life-history traits are those traits such as animal adult size, time to maturity, number of offspring produced, etc. In the European Atlas of Marine Life, two products have been prepared that show the spatial distribution of life-history trait groups in macrobenthos and fish. For example, the macrobenthos product is used for further developing the

Fishery Benthic impact framework (FBIT) within ICES [43]. While not responding to policy needs directly, these intermediary products are of great importance to facilitate this type of indicator development. Other relevant intermediary products can be maps of the trait values themselves, e.g. mean, range, max of fish size. This application is restricted to traits with a continuous numerical scale, which is only a subset of the traits used. Other applications however, such as the calculation of the bioturbation potential of the benthic fauna, combine qualitative traits with quantitative information (abundance, size) to produce targeted products yielding insight in a particular ecosystem function [44].

5.3. Addressing cumulative effects

Analysis of cumulative effects on marine ecosystems has repeatedly been mentioned by stakeholders as one of the major gaps in marine policies. Cumulative effects are difficult to estimate, because of the large number of distinct human pressures on the marine ecosystem and the complex ways in which these pressures may interact and follow diverse causal pathways of influence on the ecosystem [45]. The construction, calibration and validation of such complex interaction matrices (e.g. Ref. [46] is clearly out of the scope of EMODnet, but the project can contribute by providing spatial (and where possible temporal) data layers on a multitude of species and communities. In the face of

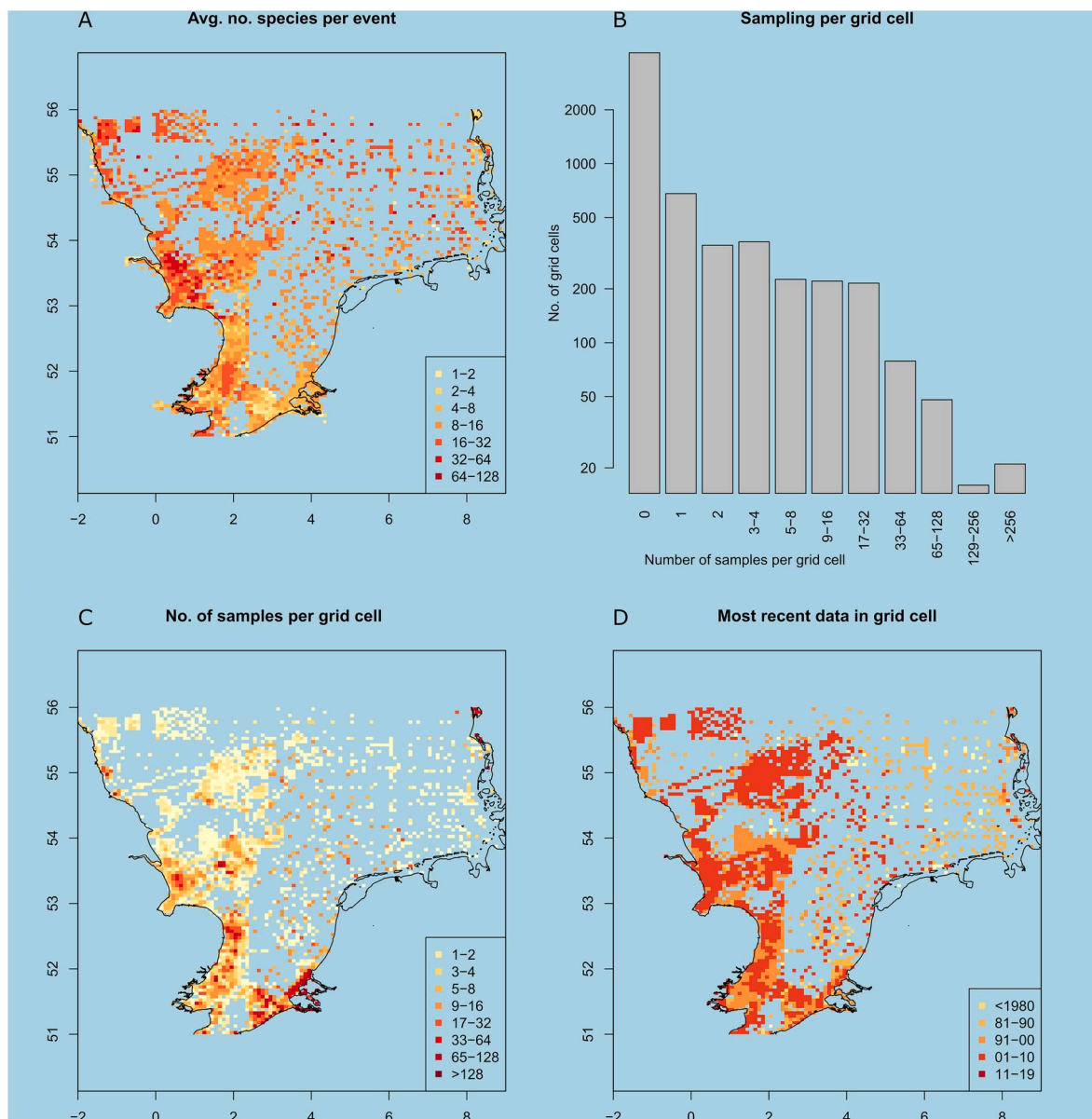


Fig. 2. Overview of data in EUROBIS containing information on benthic macrobenthic community composition. From all records within the polygon, only species known to be benthic were retained. Datasets focussing on plankton, fish, epibenthos or meiobenthos were subsequently removed, as were museum collections containing only a single specimen per sampling event. Sampling events were defined as all species records sharing date and location. These events were gridded in grid cells of 0.1 degree longitude by 0.05 degree latitude, which is order(5 km) in both directions. A. Number of sampling events per grid cell. B. Distribution of number of cells over the classes of sampling frequency. C. Diversity, expressed as the average number of species per sampling event in each of the sampled grid cells. D. Date of the most recent sample per grid cell, showing a clear west-east gradient in how up-to-date the information is.

incomplete and biased spatial coverage of the marine domain, modelling species distributions may be one way to improve the spatial distribution data. The ‘neural network modelling of Baltic zooplankton abundances’ data product is an example of such modelling approach, where the incomplete spatial coverage of zooplankton monitoring stations within the Baltic basin has been completed, using environmental information on such variables as salinity (probably the most important variable), oxygen content and others. The modelled distributions compare favourably with the observations, and moreover the temporal variation in subsequent years is usually very limited, demonstrating the robustness of the approach. This approach may form the basis for consistent space-covering indicators to be used in evaluating cumulative effects.

5.4. Species thermal tolerance & sensitivity to changes

Of particular importance for marine policy is the uncertainty in ecological background conditions created by global change. Whereas it is already challenging to predict the outcome of many different local or regional human pressures on the ecosystem, these effects might in addition be modulated by increases in temperature or acidification effects. Considerable uncertainty exists on the sensitivity of ecosystems to these global changes. The ‘thermal affinities for European marine species’ data product concentrates on these uncertainties. It uses the present and past spatial distribution of thousands of marine species to determine their optimal temperature and temperature sensitivity. These sensitivities compare favourably with experimentally obtained results for a subset of species. It can subsequently be used to map the sensitivity of species assemblages to temperature increase. The results demonstrate

that this sensitivity is not homogeneously distributed in space, with certain zones being much more likely affected than others. In contrast to the recent study by Burrows et al. [47]; the approach does not estimate realized trends in species' thermal affinity, as this requires consistent long time series and therefore limits the number of available data sets. Rather, it estimates the community's sensitiveness to such trends, which is a complementary approach with a broader taxonomic and methodological coverage.

5.5. Products to support invasive species management

Despite the inevitable incompleteness of the accumulated scientific information in the EurOBIS database, the product on 'invasive marine species occurring in European marine harbours' demonstrates that even limited datasets can be extremely useful in assessing policy decisions based on false negatives. This product illustrates a workflow to check a procedure proposed for a number of European harbours. By sampling the harbours for invasive species, the procedure proposed to determine which harbour pairs host all invasive species and could therefore be preempted from extensive checks on invasive species in ballast waters. Our workflow compares the currently used harbours database with known species occurrences in EuroBIS, and demonstrates the incompleteness of the restricted new datasets. It shows that collection of additional data can add, in a few cases, to new records of occurrence, but is generally flawed with respect to recording the absence of species in particular areas, e.g. because not all seasons or habitats have been sampled.

Precautionary policies with respect to species invasions are fraught with difficulties, because it is not always clear what species to look for, and what transport mechanisms to consider. Retrospective analysis of successful invasions can inform future-oriented policies, if sufficient data are available to document the course of the invasion. A product demonstrating such invasion was prepared on the 'temporal trend of invasive species *Marezzellaria* in the Baltic Sea'. Similar products cannot be made for many other species due to insufficient data, although the coverage by monitoring stations in certain areas may allow the workflow to be expanded to other examples.

5.6. Planktonic time series

Long-term time series, especially of phytoplankton variables, were emphasized by the stakeholders as very important information for the evaluation of policies aimed at addressing eutrophication and pollution. Several long-term monitoring stations for phytoplankton routinely collect data across Europe, but only few of these are available in the public domain. An EMODnet Biology data product using two of these series, one 30-years long and a shorter 13-year long series illustrates the 'phytoplankton community analysis in the Northern and Middle Adriatic'. The series can be examined by species, but furthermore a multivariate analysis shows the major seasonal trends and comparison over long time scales. In addition to the evaluation of eutrophication policies in the larger region, the second, shorter, series is also useful in the context of the evaluation of consequences of aquaculture in the near-shore region. The comparison of several of these time series would allow to better separate regional from local effects. The product of 'temporal trend of algal toxicity along the French coast' also concentrates on phytoplankton, focussing on Harmful Algal Blooms as the most prominent eutrophication indicator, and adds a spatial component to the analysis. This spatial component is also prominent in the maps of 'gridded copepod abundance', showing spatio-temporal series of zooplankton in the North-West Atlantic. It is based on the 60-year time series of the Continuous Plankton Recorder, and provides input to ICES' regular evaluation of the state of the ecosystem in this large sea region.

5.7. Do the data products meet the marine policy requirements?

Compared to the demands formulated by the Regional Checkpoints

and the stakeholders, the example products developed to date fulfil a number of requirements, while still missing some of the more prominent demands.

The most obvious gaps concern the population estimates of emblematic species (such as marine mammals and birds) over large spatial scales but also covering in some detail certain project areas. While data on mammals and birds are systematically collected, e.g. in the North Sea region, only older data are publicly available and are often incomplete in the EMODnet databases. Collection and analysis of these population estimates are a concerted action involving specialists and many volunteers. The results are held and curated by these groups themselves. Inclusion into the European Atlas of Marine Life will require co-operation projects to be set up, but cannot be fully covered within the scope of EMODnet Biology.

In general, we observe an inverse relation between the availability of data in the public domain, and the demand for this information from management authorities. There are exceptions, and notably the information gathered by public authorities themselves are usually freely available, but scientists or volunteer groups having heavily invested in data collection, act against their own interest when making the data available too early. This is also the reason why it is difficult to compose a comprehensive overview of phytoplankton time series across Europe. While the existence of many datasets is documented by the EMODnet metadata, availability is in many cases restricted.

The products developed now do, however, address many of the other demands from policy. Information on past and present condition of the ecosystem has been shown to contribute to data needs in the fields of fisheries policy (both with respect to fish stocks and effects of fisheries on the rest of the ecosystem), eutrophication control, conservation efforts and selection of marine protected areas, control of invasive species, marine spatial planning, evaluation of the effect of global change.

The heterogeneity in data products proposed in terms of typology, temporal and spatial coverage reflects the large heterogeneity in marine biological data, covering several levels of the trophic web and several degrees of taxonomic as well as functional precision (eg. from species level to functional traits). Nevertheless, this effort represents the first initiative, at European level, to propose a shared and harmonized approach to represent spatial and/or temporal variability of biological EOVs in the European seas, using several data sources and sampling programmes. By combining data from several programmes, these products particularly address the need of wider areas - covering information that is essential for maritime spatial planning and for the assessment of regional policies. These products represent examples that can be applied also to other areas, where data availability allows, and can be further implemented and adapted upon user needs. The demonstrated biological data products provide valuable information for environmental management, biodiversity conservation, maritime spatial planning, as well as for scientific research and for the improvement of marine policies.

6. Improvements to data and products

At the same time, the development of these prototype products has highlighted the inherent limitations of data products that depend on the random process of data collection in the marine environment by a wide variety of uncoordinated bodies, each pursuing disparate goals. The most fundamental limitation is the irreversibility of time. One can never know the true value of a variable in the past unless you have measured it in the past. This is problematic in combination with the ever-changing nature of marine policy priorities. In addition the external (climatic) conditions in the ocean are changing, as is the human use of the ocean and the political focus on particular aspects of the ocean ecosystem. The implication of these changes is that today's priority questions differ from those of the past, and most probably also those of the future. Monitoring programmes that are tightly focussed to only address the challenges of today (with all other questions being regarded as lower priority) will

undoubtedly lead to a shortage of useable data in the future. However, budget and time constraints prohibit the measurement of all variables, in all places and at all times. Defining monitoring programmes in terms that are generic enough to withstand future changes in policy questions, while remaining feasible from a budgetary point of view, is a major challenge. Overviews of where it failed in the past, in terms of e.g. unbiased spatial coverage but also type of variables measured, and where it was successful, should inform decisions on how to better allocate the resources for monitoring. Thus, the large uncertainty in gridded products in certain areas can inspire improvements or reallocations of efforts and resources in the future.

Preparing the products has also revealed other weaknesses in the present practice of data collection and curation. Large effort has been spent in many data series to remove the artefacts caused by the ‘market model’ for the organisation of monitoring. Agencies executing monitoring change on average every four to five years, with enormous consequences for changes in taxonomy and how species are recorded, data formats and other details that can render long time series close to useless for product development. It is questionable whether this problem can be solved with better protocols, or that a replacement of the market model is required. In comparison, long term data collected by research institutes usually show more consistency in the approach to taxonomy, but suffer from other disruptions. Scientists have an endless desire to adopt to the most modern technology, and to swiftly concentrate all their effort on the latest scientific questions. As a result, it is rare to find scientific time series without methodological shifts. Reconstructing the time series of zooplankton from Villefranche demanded an overview of who had been working on what thesis in what year, in order to know what species had been looked for in what series of samples. The usability of the time series as a whole has suffered much under these switches, despite the large efforts invested in it. More detailed and comprehensive metadata and provenance information would go some way to mitigating these short-comings.

A concern expressed by one of the Regional Checkpoints was that the same dataset, curated by different organisations, was found to have inconsistent versions. There appears to be an inverse relation between the number of curators of a dataset and its quality and consistency. We observed that the quality of the average dataset was far insufficient to be used ‘as is’. All datasets needed extensive checks and corrections in taxonomy, methodological details, and to account for changes in approach etc. This is a common situation for whoever tries to make single datasets useable, let alone compile overarching datasets based on different sources. No two curators will do this in the same way, and if too many people are involved in the preparation of data products, parallel and inconsistent results may appear, diminishing utility and raising concerns of trust in the product. This problem is larger when the basic quality of the underlying dataset is poorer. Setting high standards for the collection and reporting of the basic monitoring data is therefore called for, in order to reduce the impact of this problem in the future. In addition the openness of the workflows applied to dataset can avoid many problems, as they will at least show which corrections have been applied and why.

7. Stakeholder evaluation and enhancement

At the current stage, the European Atlas of Marine Life has been launched with a set of data products that can help to address the key issues, summarised in Section 5, that were highlighted by the stakeholders. However, the full utility of these products still has to be evaluated.

This evaluation will be achieved, as during other stages of data product development within EMODnet Biology, through focussed and targeted stakeholder engagement. Each of the nascent data products will be presented as case-studies alongside relevant examples of the issues they address from a diverse range of stakeholders. We then discuss the product limitations and scope for further enhancement within focussed

breakout groups to capture feedback and potential refinements that can be integrated into the next product iteration, as illustrated in Fig. 1.

A number of these iterations have already taken place within the context of EMODnet Biology, but also with wider communities including recent European Maritime Day and European Ocean Observing System events.

In the next phase of EMODnet Biology there will be opportunity to expand and further develop the prototype products in addition to the development of guidance and training in their implementation. The products provide a demonstration of what can be achieved with quality assured, open marine biological data, and should empower the creation of sector and use-case specific products across the marine domain.

The proposed principals for data products to support Essential Biodiversity Variables [48], the ‘Bari Manifesto’, lays out ten desirable outcomes to improve interoperability and FAIRness of biological data products. The application of these principles to the EMODnet Biology data products provides an indication of their level of maturity and in steering the direction of future product development.

The underlying data infrastructure supporting the EMODnet Biology products provided by EurOBIS, clearly meets many of the principles relating to data quality, structure, metadata, services and preservation. For the products defined within the European Atlas of Marine Life, many have well described workflows and are as open and FAIR as possible. However further work is required to implement transparent, standards-based provenance information alongside the products. Such information provides any data product users with the necessary information to reproduce the product development, using new or updated raw data. Guidance for the creation of future EMODnet Biology data products will include recommendations to ensure such guiding principles are considered.

We hope that a critical evaluation of the present EMODnet Biology data products can also contribute to the discussion, at national and European levels, on how to improve the entire chain of data collection, curation and interpretation for evaluation of marine policies.

8. Summary/conclusions

The development of scientifically robust and user-friendly data products is key to communicating with, and engaging the broadest range of stakeholders, in order to inform, educate and improve the capacity to respond to the challenges facing the marine environment. Such products have, for a long time, been developed in isolation, or with limited end-user engagement, especially when resulting from time-limited projects or initiatives.

The EMODnet Biology community has demonstrated the benefits and limitations of utilising existing resources to inform and steer such product development in an engaged and interactive manner. Such an approach increases the utility and value of the original data as well as resulting products, facilitates information sharing within a broader community and ensures the highest degree of interoperability. If global integration is to be achieved, and support for the EOVS approach necessitates this, then such engagement models need to be expanded and resourced to facilitate effective management of the world’s seas and oceans.

Funding

This work was supported by the European Union under Regulation (EU) No 508/2014 of the European Parliament and of the Council of May 15, 2014 on the European Maritime and Fisheries Fund.

Declaration of competing interest

None.

CRediT authorship contribution statement

D. Lear: Conceptualization. **P. Herman:** Conceptualization. **G. Van Hoey:** Writing - original draft, Writing - review & editing. **L. Schepers:** Writing - original draft, Writing - review & editing. **N. Tonné:** Writing - original draft, Writing - review & editing. **M. Lipizer:** Writing - original draft, Writing - review & editing. **F.E. Muller-Karger:** Writing - original draft, Writing - review & editing. **W. Appeltans:** Writing - original draft, Writing - review & editing. **W.D. Kissling:** Writing - original draft, Writing - review & editing. **N. Holdsworth:** Writing - original draft, Writing - review & editing. **M. Edwards:** Writing - original draft, Writing - review & editing. **E. Peccu:** Writing - original draft, Writing - review & editing. **H. Nygård:** Writing - original draft, Writing - review & editing. **G. Canonico:** Writing - original draft, Writing - review & editing. **S. Birchenough:** Writing - original draft, Writing - review & editing. **G. Graham:** Writing - original draft, Writing - review & editing. **K. Deneudt:** Writing - original draft, Writing - review & editing. **S. Claus:** Writing - original draft, Writing - review & editing. **P. Oset:** Writing - original draft, Writing - review & editing.

References

- [1] UN DESA, The Sustainable Development Goals Report 2018, UN, New York, 2018, <https://doi.org/10.18356/7d014b41-en>.
- [2] P.W. Leadley, C.B. Krug, R. Alkemade, H.M. Pereira, U.R. Sumaila, M. Walpole, A. Marques, T. Newbold, L.S.L. Teh, J. van Kolck, C. Bellard, S.R. Januchowski-Hartley, P.J. Mumby, Progress towards the Aichi Biodiversity Targets: an Assessment of Biodiversity Trends, Policy Scenarios and Key Actions. Secretariat of the Convention on Biological Diversity, vol. 78, Technical Series, Montreal, Canada, 2014, p. 500.
- [3] S. Gelcich, P. Buckley, J.K. Pinnegar, J. Chilvers, I. Lorenzoni, G. Terry, M. Guerrero, J.C. Castilla, A. Valdebenito, C.M. Duarte, Public awareness, concerns, and priorities about anthropogenic impacts on marine environments, *Proc. Natl. Acad. Sci. U. S. A.* 111 (42) (2014) 15042–15047.
- [4] J.P. Hawkins, B.C. O'Leary, N. Bassett, H. Peters, S. Rakowski, G. Reeve, C. M. Roberts, Public awareness and attitudes towards marine protection in the United Kingdom, *Mar. Pollut. Bull.* 111 (Issues 1–2) (2016) 231–236, <https://doi.org/10.1016/j.marpolbul.2016.07.003>. ISSN 0025-326X.
- [5] UN, Summary of the First Global Integrated Marine Assessment, United Nations General Assembly, 2015, 22 July 2015, A/70/112.
- [6] UN, Transforming Our World: the 2030 Agenda for Sustainable Development, United Nations, Division for Sustainable Development, Department of Economic and Social Affairs, New York, 2015.
- [7] M. Hoerling, S. Schubert, Oceans and drought, 2009 available at: <http://www.oceanobs09.net/proceedings/pp/5A2-Hoerling-OceanObs09.pp.22.pdf>.
- [8] P.M. Cury, Y.-J. Shin, B. Planque, J.M. Durant, J.-M. Fromentin, S. Kramer-Schadt, N.C. Stenseth, M. Travers, V. Grimm, Ecosystem oceanography for global change in fisheries, *Trends Ecol. Evol.* 23 (2008) 338–346, <https://doi.org/10.1016/j.tree.2008.02.005>.
- [9] I. Shepherd, European efforts to make marine data more accessible, *Ethics Sci. Environ. Polit.* 18 (2018) 75–81, <https://doi.org/10.3354/esep00181>.
- [10] J.B. Calewaert, P. Weaver, V. Gunn, P. Gorringer, A. Novellino, The European marine data and observation network (EMODnet): your gateway to European marine and coastal data, in: B. Zerr, et al. (Eds.), *Quantitative Monitoring of the Underwater Environment. Ocean Engineering & Oceanography*, vol. 6, Springer, Cham, 2016.
- [11] D. De Pooter, W. Appeltans, N. Bailly, S. Bristol, K. Deneudt, M. Eliezer, E. Fujioka, A. Giorgetti, P. Goldstein, M. Lewis, M. Lipizer, K. Mackay, M. Marin, G. Moncoiffe, S. Nikolopoulou, P. Provoost, S. Rauch, A. Roubicek, C. Torres, A. Van de Putte, L. Vandepitte, B. Vanhoorne, M. Vinci, N. Wambij, D. Watts, E.K. Salas, F. Hernandez, Toward a new data standard for combined marine biological and environmental datasets - expanding OBIS beyond species occurrences, *Biodivers. Data J.* 5 (2017), e10989. [hdl.handle.net/10.3897/BDJ.5.e10989](https://doi.org/10.3897/BDJ.5.e10989).
- [12] OBP, Ocean Best Practices Repository, Intergovernmental Oceanographic Commission of UNESCO, 2018. www.oceanbestpractices.net.
- [13] J. Frederick Grassle, The Ocean biogeographic information system (OBIS): an online, worldwide Atlas for accessing, modeling and mapping marine biological data in a multidimensional geographic context, *Oceanography* 13 (3) (2000) 5–7. JSTOR, www.jstor.org/stable/43924357.
- [14] M.J. Costello, P. Bouchet, G. Boxshall, K. Fauchald, D. Gordon, et al., Global coordination and standardisation in marine biodiversity through the world register of marine species (WoRMS) and related databases, *PLoS One* 8 (1) (2013), e51629, <https://doi.org/10.1371/journal.pone.0051629>.
- [15] J. Pearlman, M. Bushnell, L. Coppola, J. Karstensen, P.L. Buttigieg, F. Pearlman, P. Simpson, M. Barbier, F.E. Muller-Karger, C. Munoz-Mas, P. Pissierssens, C. Chandler, J. Hermes, E. Heslop, R. Jenkyns, E.P. Achterberg, M. Bensi, H. C. Bittig, J. Blandin, J. Bosch, B. Bourles, R. Bozzano, J.J.H. Buck, E.F. Burger, D. Cano, V. Cardin, M.C. Llorens, A. Cianca, H. Chen, C. Cusack, E. Delory, R. Garello, G. Giovanetti, V. Harscoat, S. Hartman, R. Heitsenrether, S. Jirka, A. Lara-Lopez, N. Lantéri, A. Leadbetter, G. Manzella, J. Maso, A. McCurdy, E. Moussat, M. Ntomas, S. Pensieri, G. Petihakis, N. Pinaridi, S. Pouliquen, R. Przeslawski, N.P. Roden, J. Silke, M.N. Tamburri, H. Tang, T. Tanhua, M. Telszewski, P. Testor, J. Thomas, C. Waldmann, F. Whoriskey, Evolving and sustaining ocean best practices and standards for the next decade, *Front. Mar. Sci.* 6 (2019) 277, <https://doi.org/10.3389/fmars.2019.00277>.
- [16] P. Miloslavich, N.J. Bax, S.E. Simmons, E. Klein, W. Appeltans, O. Aburto-Oropeza, M.A. Garcia, S.D. Batten, L. Benedetti-Cecchi, D.M. Checkley Jr., S. Chiba, J. M. Duffy, D.C. Dunn, A. Fischer, J. Gunn, R. Kudela, F. Marsac, F.E. Müller-Karger, D. Obura, Y.-J. Shin, Essential ocean variables for global sustained observations of biodiversity and ecosystem changes, *Global Change Biol.* (2018), <https://doi.org/10.1111/gcb.14108>.
- [17] F.E. Muller-Karger, P. Miloslavich, N.J. Bax, S. Simmons, M.J. Costello, I. Sousa Pinto, G. Canonico, W. Turner, M. Gill, E. Montes, B. Best, J. Pearlman, P. Halpin, D. Dunn, A. Benson, C.S. Martin, L.V. Weatherdon, W. Appeltans, P. Provoost, E. Klein, C. Kelble, R.J. Miller, F. Chavez, K. Iken, S. Chiba, D. Obura, L.M. Navarro, H.M. Pereira, V. Allain, S. Batten, L. Benedetti-Cecchi, J.E. Duffy, R. Kudela, L.-M. Rebelo, Y. Shin, G. Geller, Advancing marine biological observations and data requirements of the complementary Essential Ocean Variables (EOVs) and essential biodiversity variables (EBVs) frameworks, *Front. Mar. Sci.* (2018), <https://doi.org/10.3389/fmars.2018.00211>.
- [18] A.J. Constable, D.P. Costa, O. Schofield, L. Newman, E.R. Urban, E.A. Fulton, J. Melbourne-Thomas, T. Ballerini, P.W. Boyd, A. Brandt, W.K. de la Mare, M. Edwards, M. Eléaume, L. Emmerson, K. Fennel, S. Fielding, H. Griffiths, J. Gutt, M.A. Hindell, E.E. Hofmann, S. Jennings, H. Sul La, A. McCurdy, B.G. Mitchell, T. Moltmann, M. Muelbert, E. Murphy, A.J. Press, B. Raymond, K. Reid, C. Reiss, J. Rice, I. Salter, D.C. Smith, S. Song, C. Southwell, K.M. Swadling, A. Van de Putte, Z. Willis, Developing priority variables ("ecosystem Essential Ocean Variables" — eEOVs) for observing dynamics and change in Southern Ocean ecosystems, *J. Mar. Syst.* 161 (2016) 26–41, <https://doi.org/10.1016/j.jmarsys.2016.05.003>. ISSN 0924-7963.
- [19] H.M. Pereira, S. Ferrier, M. Walters, G.N. Geller, R.H.G. Jongman, R.J. Scholes, M. W. Bruford, et al., Essential biodiversity variables, *Science* 339 (2013) 277–278.
- [20] W.D. Kissling, J.A. Ahumada, A. Bowser, M. Fernandez, N. Fernández, E.A. García, R.P. Guralnick, N.J.B. Isaac, S. Kelling, W. Los, L. McRae, J.-B. Mihoub, M. Obst, M. Santamaria, A.K. Skidmore, K.J. Williams, D. Agosti, D. Amariles, C. Arvanitidis, L. Bastin, F. De Leo, W. Egloff, J. Elith, D. Hobern, D. Martin, H. M. Pereira, G. Pesole, J. Peterseil, H. Saarenmaa, D. Schigel, D.S. Schmeller, N. Segata, E. Turak, P.F. Uhlir, B. Wee, A.R. Hardisty, Building essential biodiversity variables (EBVs) of species distribution and abundance at a global scale, *Biol. Rev.* 93 (2018) 600–625.
- [21] W.D. Kissling, R. Walls, A. Bowser, M.O. Jones, J. Kattge, D. Agosti, J. Amengual, A. Basset, P.M. van Bodegom, J.H.C. Cornelissen, E.G. Denny, S. Deudero, W. Egloff, S.C. Elmendorf, E. Alonso García, K.D. Jones, O.R. Jones, S. Lavorel, D. Lear, L.M. Navarro, S. Pawar, R. Pirz, N. Rieger, S. Sal, R. Salguero-Gómez, D. Schigel, K.-S. Schulz, A. Skidmore, R.P. Guralnick, Towards global data products of Essential Biodiversity Variables on species traits, *Nat. Ecol. Evol.* 2 (2018) 1531–1540.
- [22] FGDC, Federal Geographic Data Committee. FGDC-STD-012-2002. Content Standard for Digital Geospatial Metadata: Extensions for Remote Sensing Metadata, Federal Geographic Data Committee, Washington, D.C., 2002. http://www.fgdc.gov/standards/projects/csdgm_rs_ext/MetadataRemoteSensingExtensions.pdf.
- [23] A. Nieva de la Hidalga, B. Magagna, M. Stocker, A. Hardisty, P. Martin, Z. Zhao, M. Atkinson, K. Jeffery, The ENVRI Reference Model (ENVRI RM) Version 2.2, 30th October 2017, 2017, <https://doi.org/10.5281/zenodo.1050349>.
- [24] EMODnet Secretariat and Flanders Marine Institute, EMODnet. Data and data product portfolio, Available at: <http://www.emodnet.eu/data-portfolio>, 2019.
- [25] M. Edwards, D. Broughton, R. Camp, G. Graham, P. Helouet, R. Stern, AtlantOS Plankton Report: Based on Observations from the Continuous Plankton Recorder Survey, vol. 12, SAHFOS Technical Report, Plymouth, U.K., 2017, pp. 1–17. ISSN 1744-0750.
- [26] W. Cai, S.K. Avery, M. Leinen, K. Lee, X. Lin, M. Visbeck, Institutional coordination of global ocean observations, *Nat. Clim. Change* 5 (2014) 4–6, <https://doi.org/10.1038/nclimate2482>.
- [27] MSFD, MSFD directive 2008/56/EC of the European parliament and the Council of 17 June 2008 establishing a framework for community action in the field of marine environmental policy (marine Strategy framework directive). http://ec.europa.eu/environment/water/marine/index_en.htm, 2008.
- [28] G. Van Hoey, J. Wischniewski, J. Craeymeersch, J. Dannheim, L. Enserink, L. Guerin, F. Marco-Rius, J. O'Connor, H. Reiss, A.F. Sell, M. Vanden Bergh, M. L. Zettler, S. Degraer, S.N.R. Birchenough, Methodological elements for optimising the spatial monitoring design to support regional benthic ecosystem assessments, *Environ. Monit. Assess.* 191 (2019) 423, <https://doi.org/10.1007/s10661-019-7550-9>.
- [29] OECD, Scientific advice for policy making: the role and responsibility of expert bodies and individual scientists. <https://doi.org/10.1787/5js331jcpwb-en>, 2015.
- [30] J.E. Tamis, P. de Vries, R.H. Jongbloed, S. Lagerveld, R.G. Jak, C.C. Karman, J. T. Van der Wal, D.M.E. Slijkerman, C. Klok, Toward a harmonized approach for environmental assessment of human activities in the marine environment, *Integrated Environ. Assess. Manag.* 12 (4) (2015) 632–642.
- [31] P. de Vries, J. Tamis, M. van den Heuvel-Greve, P. Thijss, B. Kater, Adequacy of Data Available for the Arctic Sea Basin: First Data Adequacy Report, Arctic Sea Basin Checkpoint, IMARES Wageningen UR (University & Research centre), IMARES report Final draft, Wageningen, 2016, p. 212. http://www.emodnet.eu/sites/emodnet.eu/files/public/Checkpoints/FirstDAR_Arctic.pdf.

- [32] E. Moussat, J. Populus, F. Blanc, V. Fernandez, Literature Survey Initial Assessment of Data Fitness for Use, Ifremer report, 2016. https://www.emodnet.eu/sites/emodnet.eu/files/public/Checkpoints/Atlantic Literature Survey_report.pdf.
- [33] J. She, J. Murawski, K.S. Madsen, C. McLaverty, M. Eero, P. Alenius, D. Daunys, S. Olenin, S.-T. Stoicescu, R. Lindgren, A. Soderberg, Å. Johnsen, Growth and Innovation in Ocean Economy – Gaps and Priorities in Baltic Sea Basin Observation and Data, First Data Adequacy Report EMODnet Baltic Sea CheckPoint. DMI report, 2016. https://www.emodnet.eu/sites/emodnet.eu/files/public/Checkpoints/FirstDAR_BalticSea.pdf.
- [34] N. Pinardi, V. Lyubartsev, G. Manzella, A. Palasov, V. Slabakova, L. Buga, G. Kallos, G. Zodiatis, S. Stylianou, F. Blanc, C. Cesarini, EMODnet Black Sea Checkpoint Data Adequacy Report, CMCC report, 2016. http://www.emodnet.eu/sites/emodnet.eu/files/public/Checkpoints/FirstDAR_BlackSea.pdf.
- [35] N. Pinardi, S. Simoncelli, E. Clementi, G. Manzella, E. Moussat, E. Quimbert, S. Stylianou, EMODnet MedSea CheckPoint Second Data Adequacy Report (Version 1), European Marine Observation and Data Network, 2017. https://doi.org/10.25423/cmcc/medsea_checkpoint_dar2.
- [36] M.D. Wilkinson, M. Dumontier, I.J. Aalversberg, G. Appleton, M. Axton, Comment : the FAIR Guiding Principles for scientific data management and stewardship, *Nat. Commun.* 3 (160018) (2016) 1–9, <https://doi.org/10.1038/sdata.2016.18>.
- [37] A. Borja, J.M. Garmendia, I. Menchaca, A. Uriarte, Y. Sagarmínaga, Yes, we can! Large-scale integrative assessment of European regional seas, using open access databases, *Front. Mar. Sci.* 6 (2019) 19, <https://doi.org/10.3389/fmars.2019.00019>.
- [38] O. Beauchard, H. Veríssimo, A. Queiros, P. Herman, The use of multiple biological traits in marine community ecology and its potential in ecological indicator development, *Ecol. Indic.* 76 (2017) 81–96, <https://doi.org/10.1016/j.ecolind.2017.01.011>.
- [39] A.D. Rijnsdorp, S.G. Bolam, C. Garcia, J.G. Hiddink, N.T. Hintzen, P.D. Denderen, T. Kooten, Estimating sensitivity of seabed habitats to disturbance by bottom trawling based on the longevity of benthic fauna, *Ecol. Appl.* 28 (2018) 1302–1312, <https://doi.org/10.1002/eap.1731>.
- [40] J.G. Hiddink, S. Jennings, M. Sciberras, S.G. Bolam, G. Cambie, R. A. McConnaughey, T. Mazaris, R. Hilborn, J.S. Collie, C.R. Pitcher, A.M. Parma, P. Suuronen, M.J. Kaiser, A.D. Rijnsdorp, Assessing bottom-trawling impacts based on the longevity of benthic invertebrates, *J. Appl. Ecol.* 56 (No. 5) (2019) 1075–1084.
- [41] T.H. Pearson, R. Rosenberg, Macrobenthic succession in relation to organic enrichment and pollution of the marine environment, *Oceanogr. Mar. Biol. Annu. Rev.* 16 (1978) 229–311.
- [42] A. Borja, J. Franco, V. Perez, A marine biotic index to establish the ecological quality of soft-bottom benthos within European estuarine and coastal environments, *Mar. Pollut. Bull.* 40 (2000) 1100–1114.
- [43] ICES, Interim Report of the Working Group on Fisheries Benthic Impact and Trade-Offs (WGFBIT), 12–16 November 2018, ICES Headquarters, 21, ICES CM 2018/HAPISG, Copenhagen, Denmark, 2019, p. 74. <http://ices.dk/sites/pub/Publication%20Reports/Expert%20Group%20Report/HAPISG/2018/01%20WGFBIT%20-%20Report%20of%20the%20Working%20Group%20on%20Fisheries%20Benthic%20Impact%20and%20Trade-offs.pdf>.
- [44] M. Gogina, M.L. Zettler, J. Vanaverbeke, J. Dannheim, G. Van Hoey, N. Desroy, A. Wrede, H. Reiss, S. Degraer, V. Van Lancker, A. Foveau, U. Braeckman, D. Fiorentino, J. Holstein, S.N.R. Birchenough, Interregional comparison of benthic ecosystem functioning: community bioturbation potential in four regions along the NE Atlantic shelf, *Ecol. Indic.* 110 (2020) 105945.
- [45] V. Stelzenmüller, M. Coll, A.D. Mazaris, S. Giakoumi, S. Katsanevakis, M. E. Portman, R. Degen, P. Mackelworth, A. Gimpel, P.G. Albano, V. Almpnidou, J. Claudet, F. Essl, T. Evagelopoulou, J.J. Heymans, T. Genova, S. Kark, F. Micheli, M.G. Pennino, G. Rilov, B. Rumes, J. Steenbeek, H. Ojaveer, A risk-based approach to cumulative effect assessments for marine management, *Sci. Total Environ.* 612 (2018) 1132–1140, <https://doi.org/10.1016/j.scitotenv.2017.08.289>.
- [46] G.J. Piet, A.M. Knights, R.H. Jongbloed, J.E. Tamis, P. de Vries, L.A. Robinson, Ecological risk assessments to guide decision-making: methodology matters, *Environ. Sci. Pol.* 68 (2017) 1–9, <https://doi.org/10.1016/j.envsci.2016.11.009>.
- [47] M.T. Burrows, A.E. Bates, M.J. Costello, M. Edwards, G.J. Edgar, C.J. Fox, B. S. Halpern, J.G. Hiddink, M.L. Pinsky, R.D. Batt, J.G. Molinos, B.L. Payne, D. S. Schoeman, R.D. Stuart-Smith, E.S. Polczanska, Ocean community warming responses explained by thermal affinities and temperature gradients, *Nat. Clim. Change* 9 (2019) 959–963, <https://doi.org/10.1038/s41558-019-0631-5>.
- [48] A.R. Hardisty, W.K. Michener, D. Agosti, E.A. Garcia, L. Bastin, L. Belbin, A. Bowser, P.L. Buttigieg, D.A.L. Canhos, W. Egloff, R. De Giovanni, R. Figueira, Q. Groom, R.P. Guralnick, S. Hobern, W. Hugo, D. Koureas, L. Ji, W. Los, J. Manuel, D. Manset, J. Poelen, H. Saarenmaa, D. Schigel, P.H. Uhlir, W.D. Kissling, The Bari Manifesto: an interoperability framework for essential biodiversity variables, *Ecol. Inf.* 49 (2019) 22–31, <https://doi.org/10.1016/j.ecoinf.2018.11.003>. ISSN 1574-9541.
- [49] D. Lear, H. Millburn, A. Pasquale, C. Lynham, W.D. Kissling, D. Vaughan, F. Hernandez, F. MullerKarger, G. Canonico, G. Graham, G. Vanhoey, H. Lillis, I. Shepherd, I. Makarenko, J. Kaitaranta, J. Martin, K. Deneudt, L. Avellan, L. Dodds, M. Lipizer, M. Dickey-Collas, P. Herman, W. Appeltans, J. Hill, S. Claus, Report of the EMODnet Biology: Essential Marine Biological Data Products Workshop, London, UK, 10th October 2017, Marine Biological Association, Plymouth, 2017.