

RESEARCH LETTER

Open Access



Prolonged prone position ventilation for SARS-CoV-2 patients is feasible and effective

Andrea Carsetti^{1,2}, Agnese Damia Paciarini^{1,2}, Benedetto Marini², Simona Pantanetti², Erica Adrario^{1,2} and Abele Donati^{1,2*} 

Keywords: SARS-CoV-2, Prone position ventilation

Recently, novel coronavirus 2019 (nCoV-19) is spreading all around the world causing severe acute respiratory syndrome (SARS-CoV-2) requiring mechanical ventilation in about 5% of infected people [1, 2]. Prone position ventilation is an established method to improve oxygenation in severe acute respiratory distress syndrome (ARDS), and its application was able to reduce mortality rate [3]. Although the severity of critically ill patients with SARS-CoV-2 may require pronation [4], the huge number of patients requiring intensive care unit (ICU) admission may create management problems due to the limited number of healthcare workers compared to the number of patients. Often, sustained oxygenation improvement can only be achieved after several cycles of pronation, with a work overload for healthcare staff. To face these problems, we implemented a pronation protocol that allows to extend the time for the prone position beyond 16 h, aiming to reduce the number of pronation cycles per patient. Thus, the aim of this report was to assess the feasibility and efficacy of prone position ventilation beyond the usual 16 h.

We retrospectively collected data from 10 critically ill patients intubated and mechanically ventilated for SARS-CoV-2. Six patients underwent both standard and prolonged pronation, the latter after one standard cycle

failure; 3 patients underwent prolonged pronation only and 1 patient just to the standard one. We recorded PaO₂/FiO₂ values before pronation (T0), during pronation (T1), and in the supine position after the pronation cycle (T2). Friedman's test has been used for comparisons, considering a *p* value < 0.05 as significant.

All patients were male, with a median age of 58 years (IQR 50; 64). Six patients (54.4%) were obese. All standard pronation cycles lasted for 16 h whereas the median duration of prolonged pronation cycles was 36 h (IQR 33.5–39). Ventilatory parameters before the first pronation trial are listed in Table 1. Oxygenation significantly improved during ventilation in prone position (Fig. 1). Interestingly, PaO₂/FiO₂ recorded in the supine position after a prolonged pronation trial was significantly higher than PaO₂/FiO₂ measured before pronation (*p* = 0.034). On the other hand, the gain in oxygenation was not maintained after the standard pronation cycle (*p* = 0.423). Static compliance of the respiratory system did not change significantly following prone position ventilation (*p* > 0.05). Application of prolonged prone position did not expose patients to an increased incidence of skin pressure lesions, and other complications were not reported.

Our report showed that prone position beyond 16 h may probably be safely performed in patients with SARS-CoV-2 and severe hypoxemia not responsive to conventional mechanical ventilation. This approach might have several potential advantages. First, oxygenation improvement might be higher during prolonged pronation than during standard pronation, and the gain

* Correspondence: a.donati@univpm.it

¹Department of Biomedical Sciences and Public Health, Università Politecnica delle Marche, Ancona, Italy

²Anesthesia and Intensive Care Unit, Azienda Ospedaliero Universitaria Ospedali Riuniti, Ancona, Italy



© The Author(s). 2020 **Open Access** This article is licensed under a Creative Commons Attribution 4.0 International License, which permits use, sharing, adaptation, distribution and reproduction in any medium or format, as long as you give appropriate credit to the original author(s) and the source, provide a link to the Creative Commons licence, and indicate if changes were made. The images or other third party material in this article are included in the article's Creative Commons licence, unless indicated otherwise in a credit line to the material. If material is not included in the article's Creative Commons licence and your intended use is not permitted by statutory regulation or exceeds the permitted use, you will need to obtain permission directly from the copyright holder. To view a copy of this licence, visit <http://creativecommons.org/licenses/by/4.0/>. The Creative Commons Public Domain Dedication waiver (<http://creativecommons.org/publicdomain/zero/1.0/>) applies to the data made available in this article, unless otherwise stated in a credit line to the data.

Table 1 Patients' baseline characteristics

FiO ₂	0.7 (0.18)
PEEP (cmH ₂ O)	14 (1.49)
Pplat (cmH ₂ O)	24 (1.94)
ΔP (cmH ₂ O)	9.5 (2.87)
Cstat (ml/cmH ₂ O)	49 (9.24)
PaO ₂ /FiO ₂ (mmHg)	119 (33.65)

Data reported as mean (standard deviation)

Cstat static compliance of the respiratory system, ΔP driving pressure, FiO₂ fraction of inspired oxygen, PaO₂ arterial partial pressure of oxygen, PEEP positive end-expiratory pressure, Pplat plateau pressure

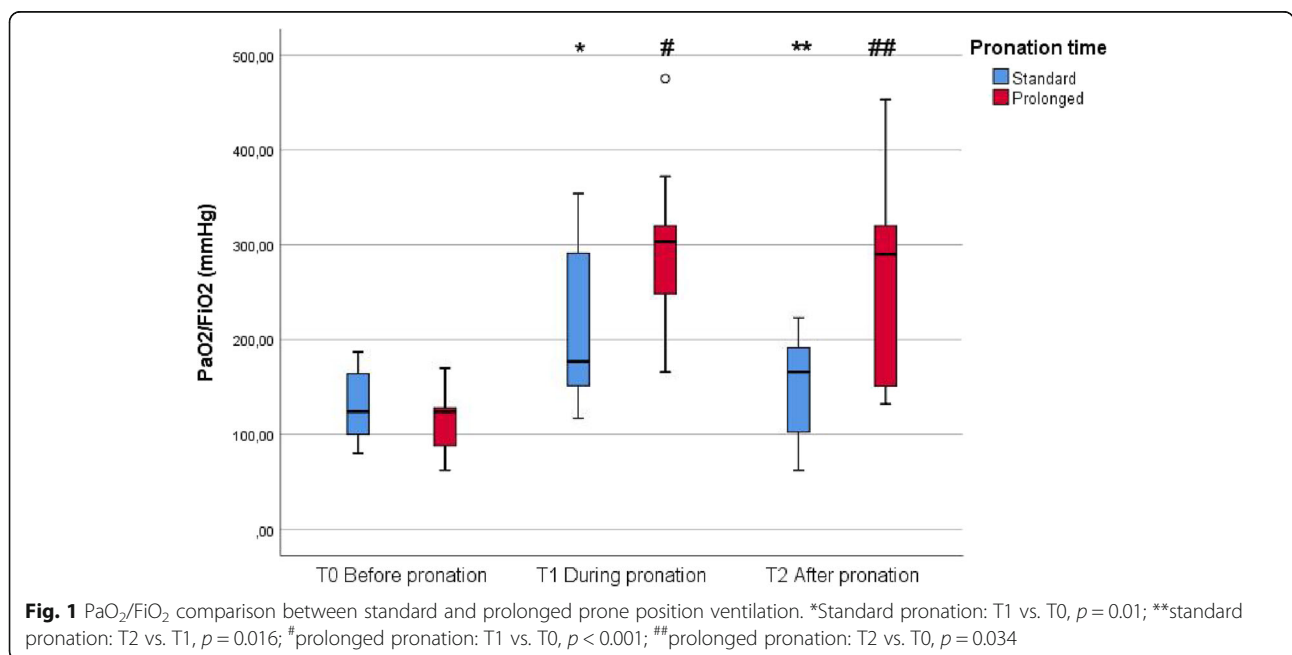


Fig. 1 PaO₂/FiO₂ comparison between standard and prolonged prone position ventilation. *Standard pronation: T1 vs. T0, $p = 0.01$; **standard pronation: T2 vs. T1, $p = 0.016$; #prolonged pronation: T1 vs. T0, $p < 0.001$; ##prolonged pronation: T2 vs. T0, $p = 0.034$

might be more sustained over time. Second, in the condition of work overload for healthcare assistants, this strategy might reduce the number of pronation cycles needed for a single patient. Finally, no adverse events have been observed following this approach. However, a well-trained healthcare team is mandatory to perform the procedure, to rapidly face potential complications, and to guarantee appropriate patient preparation to reduce the risk of bedsores lesions. The team experience may be a potential problem during the pandemic because the recruitment of staff without a critical care background may be needed in ICUs to cope with personnel shortage. Obviously, these data must be interpreted with caution and need to be confirmed because of the small number of patients considered and the retrospective design of the study.

In conclusion, we showed that prolonged prone position up to 36 h is feasible, safe, and may offer potential clinical and organizational advantages.

Abbreviations

ΔP : Driving pressure; ARDS: Acute respiratory distress syndrome; Cstat: Static compliance of the respiratory system; FiO_2 : Fraction of inspired oxygen; ICU: Intensive care unit; IQR: Interquartile range; nCoV-19: Novel coronavirus 2019; PaO_2 : Arterial partial pressure of oxygen; PEEP: Positive end-expiratory pressure; Pplat: Plateau pressure; SARS-CoV-2: Severe acute respiratory syndrome

Acknowledgements

Not applicable

Authors' contributions

AC performed the statistical analysis, interpreted the results, and drafted the manuscript. ADP collected the data and interpreted the study results. BM, SP, and EA interpreted the study result and substantially revised the manuscript. AD designed the study and substantially revised the manuscript. All authors read and approved the final manuscript.

Funding

None.

Availability of data and materials

The datasets used and/or analyzed during the current study are available from the corresponding author on reasonable request.

Ethics approval and consent to participate

As a retrospective study design, the study protocol has been submitted to the Ethics Committee "Comitato Etico Regione Marche" for acknowledgment.

Consent for publication

Not applicable.

Competing interests

The authors declare that they have no competing interests.

Received: 10 April 2020 Accepted: 7 May 2020

Published online: 15 May 2020

References

1. Yang X, Yu Y, Xu J, Shu H, Xia J, Liu H, et al. Clinical course and outcomes of critically ill patients with SARS-CoV-2 pneumonia in Wuhan, China: a single-centered, retrospective, observational study. *Lancet Respir. Med.* 2020;[Epub ahead of print].

2. Guan W-J, Ni Z-Y, Hu Y, Liang W-H, Ou C-Q, He J-X, et al. Clinical characteristics of coronavirus disease 2019 in China. *N. Engl. J. Med.* 2020; [Epub ahead of print].
3. Guérin C, Reignier J, Richard JC, Beuret P, Gacouin A, Boulain T, et al. Prone positioning in severe acute respiratory distress syndrome. *N Engl J Med.* 2013;368:2159–68.
4. World Health Organization. Clinical management of severe acute respiratory infection (SARI) when COVID-19 disease is suspected: interim guidance; 2020. p. 1–19.

Publisher's Note

Springer Nature remains neutral with regard to jurisdictional claims in published maps and institutional affiliations.

Ready to submit your research? Choose BMC and benefit from:

- fast, convenient online submission
- thorough peer review by experienced researchers in your field
- rapid publication on acceptance
- support for research data, including large and complex data types
- gold Open Access which fosters wider collaboration and increased citations
- maximum visibility for your research: over 100M website views per year

At BMC, research is always in progress.

Learn more biomedcentral.com/submissions

