

*Review*

# Role of viruses in the pathogenesis of Multiple Sclerosis

Tarlinton Rachael<sup>1</sup>, Martynova Ekaterina<sup>2</sup>, Rizvanov Albert<sup>2</sup>, Khaiboullina Svetlana<sup>3</sup>, Verma Subhash<sup>3</sup>

<sup>1</sup>School of Veterinary Medicine and Science, University of Nottingham, UK

<sup>2</sup>Kazan Federal University, Kazan, Russia

<sup>3</sup>University of Nevada, Reno, USA

Corresponding author: Verma Subhash, Ph.D. Associate Professor, E-mail: [scverma@med.unr.edu](mailto:scverma@med.unr.edu)

**Abstract:** Multiple sclerosis (MS) is an immune inflammatory disease, where the underlying etiological cause remains elusive. Multiple triggering factors have been suggested including environmental, genetic and gender components. However underlying infectious triggers to the disease are also suspected. There is an increasing abundance of evidence supporting a viral etiology to MS, including the efficacy of interferon therapy and over detection of viral antibodies and nucleic acids when compared with healthy patients. Several viruses have been proposed as potential triggering agents, including Epstein-Barr virus, Human herpesvirus 6, Varicella-zoster virus, Cytomegalovirus, John Cunningham virus and Human endogenous retroviruses. These viruses are all near ubiquitous and have a high prevalence in adult populations (or in the case of the retroviruses are actually part of the genome). They can establish lifelong infections with periods of reactivation, which may be linked to the relapsing nature of MS. In this review, the evidence for a role for viral infection in MS will be discussed with an emphasis on immune system activation related to MS disease pathogenesis.

**Keywords:** Multiple sclerosis; human herpesvirus-6; varicella-zoster virus; Cytomegalovirus; John Cunningham virus; human endogenous retroviruses; Epstein-Barr virus

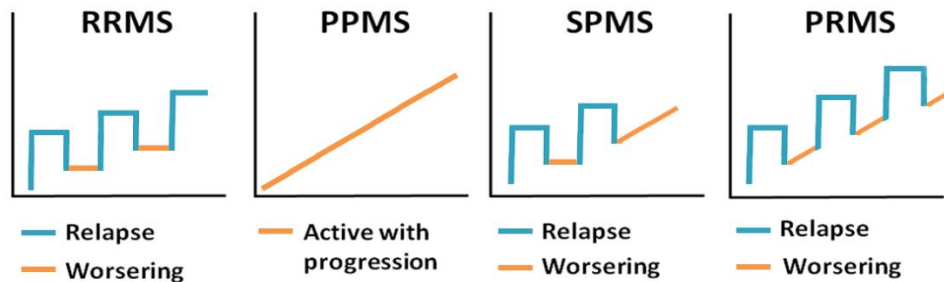
---

## 1. Introduction

Multiple sclerosis (MS) is a severely debilitating progressive inflammatory disease of the central nervous system (CNS) [1]. The basic pathology is thought to be auto-immune mediated damage to the myelin sheaths of central nerves [2]. This is supported by the finding of plaques, areas of the damage, particularly within the white matter around the lateral ventricles of the brain and optic nerves [3,4]. Demyelination of the white matter in MS is routinely demonstrated by conventional MRI techniques [5]; however, lesions in the grey matter are also demonstrated [6]. It appears that the degree of cortical demyelination reflects the clinical progression of MS with demyelination of the grey matter associated with the progressive form of the disease along with neuronal loss, while myelin destruction is detected in relapsing-remitting MS [7,8]. Cortical lesions can also be detected at the early stages and they correlate with the disease severity [9].

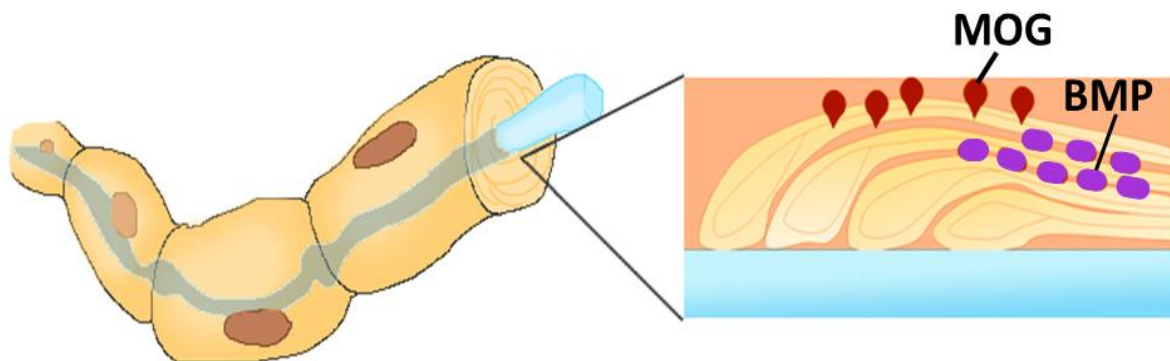
The clinical course of the disease varies greatly from relapsing remitting, where patients have periods of remission, to progressive forms. There are four clinical forms of MS: primary progressive MS (PPMS), secondary progressive MS (SPMS), relapsing remitting MS (RRMS) and progressive relapsing (PRMS) all of which are characterized by periods of active disease with evidence of new pathology interspersed with inactive periods [10] (Figure 1). RRMS is the most common form of the disease, which is characterized by worsening of clinical symptoms followed by periods of partial or complete recovery [11]. RRMS often transitions into a secondary progressive course with worsening and steady progression of symptoms [12], which is referred to as SPMS. A small group of patients

will develop PPMS with steady progression of neurological symptoms without periods of remission [13-15]. PRMS is somewhat similar to PPMS, but these patients have periods of recovery characterized by concomitant progression of MS symptoms [15]. The remitting phase of the disease, where the periods of remission are followed by worsening of symptoms, closely resembles the progression of some viral infections, herpes viruses, in particular. Although, permanent tissue destruction and loss of function is not common for reactivation of most of herpesviruses, still, neurological complications have shown in some chronic herpesviruses infections [16].



**Figure 1.** Clinical presentation of MS. RRMS- has worsening of clinical symptoms followed by periods of recovery; PPMS - has steady progression of clinical symptoms; SPMS – initial relapsing-remitting course followed by steady progression of symptoms; PRMS - steadily progression of clinical symptoms with occasional relapses.

Myelin is the multilamellar sheath formed around the neurons and axons by neuroglial cells [17]. Myelin formation is complex process requiring expression of several myelin-specific proteins: myelin basic protein (MBP), myelin-associated glycoprotein and proteolipid protein [18]. Additionally, several minor glycoproteins are present in the myelin sheath including myelin oligodendrocyte glycoprotein (MOG) (Figure 2). MOG is expressed on the surface of the myelin, covering the neurons and axons [19]. While the function of MOG remains largely unknown, it is believed that this protein serves as an adhesion molecule or cellular receptor.



**Figure 2.** Myelin-associated glycoprotein (MOG) expression on the surface of the myelin, covering the axon. The myelin sheets are held together with Myelin basic protein (MBP) , while MOG is located on the surface and exposed to the autoreactive leukocytes.

A number of risk factors including ethnicity, particular HLA loci, gender (it is more common in women), latitude (and therefore sunlight and vitamin D levels) and viral infections have been identified as risk factors of MS [20]. A variety of immune modulatory treatments are used with none fully able to halt or reverse disease progression. Nevertheless, the effectiveness of interferon beta (IFN $\beta$ ) treatment of MS suggests that antiviral immunity plays a role in the etiology of MS, as this cytokine has a potent anti-viral activity [21]. A role in MS pathogenesis has been suggested for many viruses including Epstein-Barr virus (EBV), Human herpesvirus 6 (HHV-6), Varicella-zoster virus

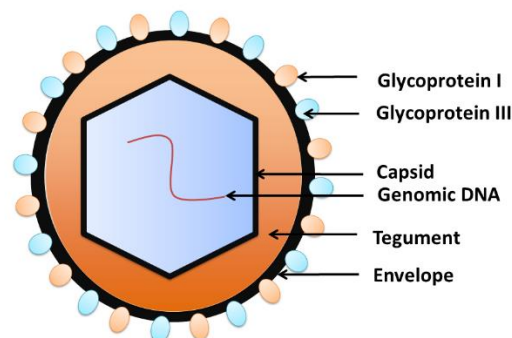
(VZV), Cytomegalovirus (CMV), John Cunningham virus (JCV) and Human endogenous retroviruses (HERVs)[22-26]

The association between viral infection and MS is a complex. Although belonging to different families, these viruses have in common an ability to manipulate host gene expression, potentially leading to immune dysregulation, myelin destruction and inflammation. These are all viruses with either a DNA phase or DNA viruses, can cross the blood brain barrier (BBB) and can all establish lifelong chronic infection [27]. In this review, the role of several viruses in MS pathogenesis will be discussed.

## 2. Herpesviruses

There is an established epidemiological link between herpesvirus infection status and the risk of MS. Herpesviruses have a near ubiquitous prevalence in adult populations and are usually contracted in the early childhood with little overt disease [28]. There are several herpes virus types known to be human pathogens: alpha, beta and gamma [29]. Members of each group, alpha (varicella zoster virus, VZV), beta (cytomegalovirus CMV and human herpesvirus 6 HHV-6) and gamma (Epstein Barr virus EBV) are all suspected of having potential role in MS. Herpesviruses can establish two replication cycles: latency and reactivation. Herpesviruses have multiple targets including neuronal (alpha-herpesviruses) and non-neuronal (beta and gamma herpesviruses), macrophages and B cells [30,31]. Herpesviruses targeting neurons directly or indirectly, via immune response, could contribute to the tissue damage found in MS.

Herpes viruses share many features in their structure including the capsid and tegument proteins as well as the envelope (Figure 4). Typically, virus genome is covered by the nucleocapsid [32], which is surrounded by the tegument protein [33] [34]. The envelope containing glycoprotein spikes wraps the virus outside [35]. The envelop glycoproteins bind to the cell receptors and assist with penetration of the target cell [36]. Virus DNA replication, transcription and encapsidation take place in the nucleus of infected cells [37,38]. In immunocompetent hosts infection is usually asymptomatic, followed by lifelong latency and reactivation [36] [39]. Virus can reactivate, resulting in the initiation of a replication cycle and cytopathic effect in infected cell [40].



**Figure 4.** Structure of Herpesviruses. The viral DNA is packed inside the capsid, which is wrapped by the tegument. The envelope, the outer layer of the virion, is composed by the phospholipids bilayer embedded with glycoproteins.

### 2.1 Alphaherpesviruses (VZV, HSV-1 and 2)

VZV reactivation is a recognized complication of the immunosuppressive therapies used in MS treatment, in particular Fingolimod (a sphingosine-1-phosphate receptor modulator that acts by sequestering lymphocytes in lymph nodes). [41] A history of VZV and an increased antibody response to it is more common in MS patients than the general population[41,42]. VZV is also frequently detected during active disease phases of MS[43]. It is not clear however whether this detection has

any connection to a role in pathogenesis in MS or is an incidental escape of VZV from immune control due to MS treatment or disease[44].

Similarly for HSV-1 and 2 viral encephalitis as complication of the various immunosuppressive drugs used in MS therapy is seen [45-47] and there has been some suggestion of increased antibody prevalence of HSV-1 and or 2 in MS patients (though potentially only in some cohorts of patients [48,49] and this is not repeatable across different cohorts of patients [50]. HSV-1 in rats and mice can induce demyelinating encephalitis but it is not clear that this cross species transmission event pathology is relevant in humans [51,52].

## 2.2 Beta-herpesviruses. CMV.

The association of CMV and MS pathogenesis remains inconclusive. In two studies higher loads of CMV DNA were demonstrated in an Iranian cohort of MS patients when compared to controls [53,54]. Corroborating these data were findings that opportunistic reactivation of CMV infection can also occur in MS patients with this reactivation potentially exacerbating existing MS [55,56]. In contrast, multiple other studies have demonstrated a negative correlation between CMV seropositivity and MS diagnosis [25,57-60] [61]. A large meta-analysis including 1341 MS and 2042 controls however failed to conclusively define the relationship between CMV infection and the disease [62] These differences may potentially be explained by an effect similar to that described for Epstein Barr virus whereby the small number of people who have never been infected with CMV have a decreased risk of MS in contrast with reactivation of latent CMV in the active disease phase of MS potentially exacerbating existing damage

Evidence from the two murine models of MS is also conflicting with Pirko et al 2012 , a protective effect of the murine version of CMV, MCMV infection in the Theiler's murine encephalitis virus (TMEV) model MS [63]. Whereas Vanheusden et al demonstrated expansion of CD4+CD28<sup>null</sup> T cells in MCMV infection in mice with these cells associated with

, aggravation of the inflammation, demyelination and worsening symptoms of experimental autoimmune encephalomyelitis (EAE), a mouse model of MS induced by the injection of myelin antigens with adjuvant EAE [64]. These authors identified circulating CD4+CD28<sup>null</sup> T cells as the leading pathogenic lymphocytes in mice, as their counts correlated with demyelination and disease severity. These T cells lack to CD28 co-stimulation factor necessary for activation of T cells and are typically expanded in chronic inflammation [65]. The EAE model in mice is not however a perfect mirror of MS disease in humans Although a strong correlation between CD4+CD28<sup>null</sup> T lymphocytes and EAE progression has been demonstrated in mice, these cells were expanded only in a small group of MS patients and demonstrated limited autoreactivity [66]. Alternative work in the non-human primate model (the marmoset) with a closer pathology to the human disease has also highlighted that the T-cell driven responses in the murine models may not be as important in primates and humans [23].

## 2.2 Beta-herpesviruses HHV6.

There are a number of studies linking HHV6 with MS pathogenesis [67]. Strong evidence of the role of HHV6 in MS pathogenesis includes an increased prevalence of viral DNA and proteins within MS plaques and CSF as compared to healthy patients indicating HHV6 neurotropism [68,69]. Also, expression of viral RNA and proteins in periventricular lesions, which are commonly found in MS, supports the involvement of HHV6 in MS pathogenesis [70,71]. These findings have been countered by other studies failing to report HHV6 detection in MS [72]. However, a recent systematic review and Meta-analysis supports an association between HHV-6 antibody and DNA positivity and MS [73]. There is also some suggestion of HHV-6 proteins having cross reactivity with myelin basic

protein, an essential component of the myelin sheath, which could contribute to CD8+ T cell mediated oligodendrocyte death [72].

### 2.3 Gamma Herpesviruses EBV.

Gamma-herpesvirus EBV association with MS is complex. It appears that EBV seronegative status correlates with a decreased risk of MS [74]. Accordingly, patients with infectious mononucleosis (IM), have an increased risk of MS as compared to those who are seropositive but with no history of IM [75]. Whether the presence of EBV DNA is more likely in MS than “healthy” patients is more controversial and remains unproven [75,76] [77]. Also virus detection in the periphery, may not correlate with its presence in the CNS [76]. Therefore, some authors hypothesize that EBV invasion of the CNS before adaptive immune responses have developed is a crucial factor in MS pathogenesis [78]. Multiple mechanisms of EBV MS pathogenesis are currently proposed including cross reactivity between virus and myelin epitopes [79], auto-immune responses against alpha- $\beta$ -crystallin (a stress protein expressed in lymphoid cells and oligodendrocytes)[80], antibody-dependent cell-mediated cytotoxicity and complement-dependent cytotoxicity [81]. Despite its well-established role as one of the triggers of the disease, shedding or detection of EBV in either the blood or CNS does not appear to be related to relapses or progression of MS [82,83].

Intriguingly there is also an increasing body of evidence pointing at the role of Epstein-Barr Nuclear antigen 2 (EBNA2) in the pathogenesis of MS. EBNA2 can upregulate host gene expression and recruit transcription activation factors [84-87]. Interestingly EBNA2 binding in the host cells occurs within the known genetic loci associated with MS susceptibility [88]. In this respect, two binding sites appear to be most interesting: Recombination signal binding protein for immunoglobulin kappa J region (RBPJ) and the vitamin D receptor (VDR). It has been shown that EBNA2 can convert resting B cells into immortal cells by engaging the transcription factor RBPJ [89]. These immortal B cells could maintain pathogenic autoreactive leukocytes in MS circulatory and brain tissue. The EBNA2 overlap with VDR [88] is also of importance as vitamin D deficiency as a predisposing factor in MS is well established [90]. Many of the same sites are also implicated in systemic lupus erythematosus (SLE), another disease with strong epidemiological links to EBV infection [88,91]. These associations are particularly marked in B cells and it would seem that there is a competitive interaction for transcription binding sites between EBNA2, promoting B cell proliferation, and Vitamin D which down regulates B cell function.

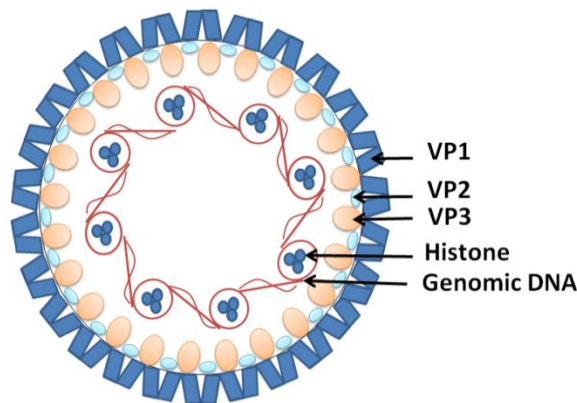
Further more complicated evidence for a direct role of EBV in MS pathology is provided by the marmoset model of MS, which closely mimics the human immune response to EBV [92]. In this model, the role of Calithricine herpesvirus 3 (CalHV3) in pathogenesis of MS-like disease was explained by direct infection of B cells [93]. Therefore, it appears that the therapeutic efficacy of marmoset treatment with anti CD20 monoclonal antibodies (anti B cell antibodies) was associated with the depletion of CalHV3 infected B cells [94]. An important aspect of this is the antigen presenting capacity of CalHV3 infected B cells is affected resulting in the presentation of citrullinated epitopes of MOG, which is resistant to degradation [95]. It was suggested that these epitopes can stimulate autoreactive cytotoxic T cells, which can escape thymic deletion.

The evidence for EBV involvement in MS pathogenesis has been compelling enough for at least one trial of EBV specific autologous T cell therapy with in-vitro expanded T cells stimulated to target EBV nuclear antigen 1 (EBNA1), latent membrane proteins 1 and 2A (LMP1, LMP2A) and reinfused in the donor patient. Seven of the 10 patients treated showed clinical and neurological improvement, though it is important to note that this was primarily a safety trial with no control arm[96]

## 3. Non-herpes viruses associated with MS.

### 3.1 JCV

JCV (human polyomavirus 2 or John Cunningham Virus) is another near ubiquitous DNA viral infection acquired in childhood [97]. JCV is a non-enveloped double-stranded DNA virus which associates with cellular histones to form minichromosomes in infected cells [98,99] (Figure 5). It is believed that JCV infection occurs during childhood and remains dormant in the stage of latency in most individuals [100]. This explains the fact that up to 90% of adults are seropositive for the virus, with about 20% shedding it in urine [101,102]. JCV infection does not cause overt disease in individuals with functional immune systems [103]. However, in immunocompromised individuals, the virus can trigger progressive multifocal encephalopathy (PML), characterized by lytic JCV infection of oligodendrocytes and astrocytes in the CNS [104]. It appears that the virus has to undergo several mutations to enable it to cross the BBB and replicate in the CNS [105,106].



**Figure 5.** Structure of JCV. The viral DNA is packed around the Histones in a chromatin-like complex. Covered by viral structural proteins VP1, forming the capsid with VP2 and VP3 proteins incorporated.

Although JCV targets oligodendrocytes and demyelination, it is not thought to have any role in triggering MS pathogenesis. An increased risk of development of PML in MS patients treated with natalizumab (a monoclonal antibody targeting alpha integrin and therefore inhibiting all white blood cell migration) is a known risk factor of this treatment regime [107]. Currently, the use of this drug is therefore limited to only highly active RRMS and patients with tolerance to first-line treatments such as IFN  $\beta$  [108]. Why this syndrome should be prevalent with natalizumab and not with other MS treatments is not clear; however, it is thought to be related to the induction of increased B cell numbers alongside reduced immune surveillance of the CNS [109]. Withdrawal of treatment can exacerbate the condition as the influx of suddenly reconstituted immune cells can worsen the inflammation caused by JCV, which is often fatal [110]. Hence despite its effectiveness in RRMS, risk assessment and monitoring of patients based on JCV seropositivity and antibody titer is necessary in treatment decisions with this drug in MS [24].

### 3.2 HERVs

HERVs are replication defective retroviral proviruses integrated into the human genome and comprising up to 8% of it [111]. Over the millennia, HERV proviral sequences have been integrated into the human genome regulatory machinery by functioning as promoters, repressors, poly(A) signals, enhancers and alternative splicing sites for many non-viral genes [112,113]. Along with beneficial effects, inappropriate expression of HERVs has been shown to cause inflammation, aberrant immune reaction and dysregulated gene expression [114–116]. HERVs can be grouped into three main classes: class I Gammaretrovirus- and Epsilonretrovirus-like HERVs; class II



Betaretrovirus-like HERVs; and class III HERV-L [117]. Expression of Gammaretrovirus HERV family members, HERVs-H and W has been shown to be associated with MS diagnosis [118,119]. Although not capable of completing a full replication cycle, transcription and translation of individual HERV proteins, particularly the HERV-W Env protein syncytin in the human placenta, does occur and has been demonstrated in the CNS in MS cases and in some healthy individuals [120-122]. There are substantial variations in the proportion of MS patients that test positive for HERV-W viral RNA in the serum, which can vary between 50 to 100% and in the viral load detected [123-125] with our systemic Meta-analysis confirming the association between MS and HERV-W expression [22]. The wide variation in HERV detection is potentially explained by population differences in HERV expression as well as the differing detection methods used in each study. It appears that the detection of HERV-W products in the blood of MS patients is associated with a poor prognosis and could serve as a predictive marker for conversion of optic neuritis into MS [126,127]. HERV load also correlates positively with Expanded Disability Status Scale (EDSS) and Multiple Sclerosis Severity Score (MSSS) ratings [128]. The higher HERV-W expression in female as compared to male patients, corresponds to the gender differences within MS [127]. Further evidence of HERV association with MS pathogenesis is provided by the detection of HERV-W particles in CSF, changing with the disease progression: increasing in relapse and decreasing during remission [129]. HERV antigens can be immunogenic and higher antibody reactivity against HERV-W and HERV-H Env epitopes was demonstrated in MS patients during relapse [130]. These data suggest that HERV antigens could trigger auto-immune responses, leading to systemic activation of T cell-mediated neuropathology and brain tissue damage as shown in a SCID mouse model [131].

There is an increasing body of data demonstrating that HERV-W protein expression leads to immune activation and inflammation. HERV-W proteins display cross reactivity with MOG and have been demonstrated to bind with the HLA DR2 locus implicated in genetic susceptibility to MS [132,133] [134] [135-137]. HERV-W env proteins bind to CD14 and TLR4 triggering pro-inflammatory cytokines IL-1 $\beta$ , IL-6, or TNF- $\alpha$  [138-140]. The HERV-W Env derived protein syncytin is expressed, specifically in monocytes, T and B lymphocytes and NK cells displaying an activated phenotype with expression increasing when these cells were stimulated with LPS. In addition binding of syncytin activated monocytes, increased the proportion of the type of non-classical monocyte (CD14<sup>low</sup>CD16<sup>+</sup>) associated with MS [141]. Both HERV-W and HERV-H are overexpressed in these non-classical monocytes in MS patients [142,143]. Intriguingly the use of HERV driven enhancers (the LTR regions in HERVs can turn on nearby genes) is increased in T cells from MS patients specifically activating the immune genes CCL20 and IL1R2 [144]. While there is argument over whether peripheral immune responses in PBMC can induce CNS disease it is also clear that a leaky blood brain barrier in MS can allow the migration of blood borne monocytes to the CNS triggering inflammation and myelin damage [145].

HERV-W or syncytin (there is some argument over whether HERV-W env proteins, can be reliably distinguished from each other [146]) have also been shown to inhibit oligodendrocyte precursor cell formation and remyelination, an effect that can be blocked by the anti-HERV monoclonal antibody GNbAC1 [147]. This antibody despite a disappointing lack of effect on clinical disease scores in treatment trials with patients did more promisingly demonstrate a reduction in new lesions as measured by MRI in treated patients compared with placebo [148]. Recent work has in addition demonstrated that HERV-W is present in microglia (brain resident myeloid cells) associated with axons in MS patients and that expression of HERV-W in myeloid cells induces a degenerative phenotype resulting in damage to myelinated axons [149].

An interesting cooperation between EBV and HERVs has also been demonstrated in MS patients. Irizar et al have shown that EBV reactivates in B cells of female RRMS patients during relapse [150]. It appears that EBV-encoded glycoprotein 350 expression stimulates the expression of the syncytin-1, HERV-W coded protein in B cells as well as in astrocytes and monocytes [150]. We have also shown a similar effect with EBV infection of B cells triggering increased expression of HERV-W RNA and protein [151]. This effect is also seen in young adults with infectious mononucleosis (EBV induced

disease) [152] It could be suggested that EBV infection or reactivation could serve as a trigger for HERV reactivation, which acting as antigens, could induce an auto-immune response targeting neural tissue.

A similar effect has been recently reported with HHV-6 infection of PBMC and astrocytoma cell lines where viral infection or activation of its receptor CD46 triggers HERV-W expression and TLR4 activation [153] Similarly HSV-1 infection in neuroepithelioma cell lines with HSV-1 also activated HERV-W transcription and protein expression in neuronal and brain endothelial cells in culture [154] [155], the activation potentially mediated by HSV-1 intermediate early protein (IE1) binding to the HERV-W LTR [156]. Interestingly there is also work showing that the addition of both herpesviral and HERV-H antigens to PBMC triggered enhanced cellular immune responses [157]

#### 4. Antiviral effects of MS treatment

The treatments available for MS are all variants of immunomodulatory therapies, most of which produce their primary effect via induction of lymphopenia or a shift to a more TH2 driven phenotype [158]. Many of them are also used in cancer therapy and common side effects include an increased incidence of opportunistic infections or reactivation of latent infections. Interestingly the first drug successfully used in MS is IFN $\beta$ , which is also one of the principal antiviral cytokines produced by virus infected fibroblasts [159]. It may seem a counterintuitive use of an antiviral cytokine to treat an inflammatory disorder but the feedback loops induced by IFN $\beta$  inhibit many T cell functions [158]

The more recent MS treatments include humanized monoclonal antibodies against lymphocyte surface antigens [160]. These include Natalizumab which targets VLA4 (very late antigen 4) which is expressed on various leukocytes [161,162]. This is thought to inhibit the interaction between VLA-4 and vascular cell adhesion molecule-1 (VCAM-1) which facilitates leukocyte migration across the BBB [163-165]. The success of the Natalizumab as MS therapeutic has however been hindered by PML developing in some patients [166,167]. Another humanized antibody MS therapeutic is Alemtuzumab which targets CD52 expressing lymphocytes, monocytes and dendritic cells [168]. It appears that the mechanism of Alemtuzumab action is associated with depletion of circulating T and B lymphocytes via antibody-dependent and complement-dependent cytotoxicity [168,169]. Post Alemtuzumab hyper-rebounding of the B cell population can, however, result in a variety of other autoimmune diseases, a common side effect of this treatment [170]. The most recently introduced drug of this class Ocrelizumab, and its predecessor Rituximab, targets the B cell surface protein CD20, resulting in selective depletion of this lymphocyte population [171]. In the context of this review all of these therapies, which have been quite successful in MS therapy target immune cells in which EBV or HERV expression has been demonstrated and part of the effect of these monoclonal antibody therapies may be in reducing the EBV and HERV-W autoreactive cells and antigen load.

#### 6. Conclusions

There is increasingly solid evidence for a pathogenic role in the triggering of MS auto-immune responses by a failure to control chronic viral infections. Evidence for the herpesviruses EBV and CMV points towards patients who have never been infected with these viruses having a decreased risk of disease, whereas virus activation and the immune responses associated with this are linked to MS pathology. Similarly EBV infection appears to trigger expression of the HERVs that have been associated with MS pathogenesis and for both HERVs and Herpesviruses significant cross reactivity between viral protein epitopes and the MOG (myelin oligodendrocyte protein) and myelin basic proteins that are major targets in MS autoimmunity are evident. Directly opposing effects of vitamin D (protective) and EBV EBNA2 (associated with disease) at a molecular level are also apparent. Significantly a number of the most commonly used and effective MS treatments also directly induce antiviral responses or remove the cells that these herpesviruses (and subsequently retroviruses) replicate and are expressed in adding further evidence to a role for these viral infections in MS pathogenesis.



**Conflicts of Interest:** The authors declare no conflict of interest.

Acknowledgments.

## References

1. Popescu, B.F.G.; Pirko, I.; Lucchinetti, C.F. Pathology of multiple sclerosis: where do we stand? *CONTINUUM: Lifelong Learning in Neurology* **2013**, *19*, 901.
2. Tarlinton, R.E.; Khaibullin, T.; Granatov, E.; Martynova, E.; Rizvanov, A.; Khaiboullina, S. The interaction between viral and environmental risk factors in the pathogenesis of multiple sclerosis. *International journal of molecular sciences* **2019**, *20*, 303.
3. Horowitz, A.L.; Kaplan, R.D.; Grewe, G.; White, R.; Salberg, L.M. The ovoid lesion: a new MR observation in patients with multiple sclerosis. *American journal of neuroradiology* **1989**, *10*, 303-305.
4. Lucchinetti, C.; Brück, W.; Parisi, J.; Scheithauer, B.; Rodriguez, M.; Lassmann, H. Heterogeneity of multiple sclerosis lesions: implications for the pathogenesis of demyelination. *Annals of Neurology: Official Journal of the American Neurological Association and the Child Neurology Society* **2000**, *47*, 707-717.
5. Geurts, J.J.; Bö, L.; Pouwels, P.J.; Castelijns, J.A.; Polman, C.H.; Barkhof, F. Cortical lesions in multiple sclerosis: combined postmortem MR imaging and histopathology. *American journal of neuroradiology* **2005**, *26*, 572-577.
6. Bø, L.; Vedeler, C.A.; Nyland, H.; Trapp, B.D.; Mørk, S.J. Intracortical multiple sclerosis lesions are not associated with increased lymphocyte infiltration. *Multiple Sclerosis Journal* **2003**, *9*, 323-331.
7. Geurts, J.J.; Bö, L.; Roosendaal, S.D.; Hazes, T.; Daniëls, R.; Barkhof, F.; Witter, M.P.; Huitinga, I.; van der Valk, P. Extensive hippocampal demyelination in multiple sclerosis. *Journal of Neuropathology & Experimental Neurology* **2007**, *66*, 819-827.
8. Lin, W.; Stone, S. The unfolded protein response in multiple sclerosis. *Frontiers in neuroscience* **2015**, *9*, 264.
9. Calabrese, M.; De Stefano, N.; Atzori, M.; Bernardi, V.; Mattisi, I.; Barachino, L.; Morra, A.; Rinaldi, L.; Romualdi, C.; Perini, P. Detection of cortical inflammatory lesions by double inversion recovery magnetic resonance imaging in patients with multiple sclerosis. *Archives of neurology* **2007**, *64*, 1416-1422.
10. Lublin, F.D.; Reingold, S.C. Defining the clinical course of multiple sclerosis: results of an international survey. *Neurology* **1996**, *46*, 907-911.
11. Noseworthy, J.H. Progress in determining the causes and treatment of multiple sclerosis. *Nature* **1999**, *399*, A40.
12. Trapp, B.D.; Nave, K.-A. Multiple sclerosis: an immune or neurodegenerative disorder? *Annu. Rev. Neurosci.* **2008**, *31*, 247-269.
13. Koch, M.; Kingwell, E.; Rieckmann, P.; Tremlett, H. The natural history of primary progressive multiple sclerosis. *Neurology* **2009**, *73*, 1996-2002.
14. Khaleeli, Z.; Ciccarelli, O.; Manfredonia, F.; Barkhof, F.; Brochet, B.; Cercignani, M.; Dousset, V.; Filippi, M.; Montalban, X.; Polman, C. Predicting progression in primary progressive multiple sclerosis: A 10-year multicenter study. *Annals of Neurology: Official Journal of the American Neurological Association and the Child Neurology Society* **2008**, *63*, 790-793.
15. Lublin, F.D.; Reingold, S.C.; Cohen, J.A.; Cutter, G.R.; Sørensen, P.S.; Thompson, A.J.; Wolinsky, J.S.; Balcer, L.J.; Banwell, B.; Barkhof, F. Defining the clinical course of multiple sclerosis: the 2013 revisions. *Neurology* **2014**, *83*, 278-286.

16. Meyding-Lamadé, U.; Strank, C. Herpesvirus infections of the central nervous system in immunocompromised patients. *Therapeutic advances in neurological disorders* **2012**, *5*, 279-296.
17. Dubois-Dalcq, M.; Armstrong, R. The cellular and molecular events of central nervous system remyelination. *Bioessays* **1990**, *12*, 569-576.
18. Dubois-Dalcq, M.; Behar, T.; Hudson, L.; Lazzarini, R. Emergence of three myelin proteins in oligodendrocytes cultured without neurons. *The Journal of cell biology* **1986**, *102*, 384-392.
19. Peschl, P.; Bradl, M.; Höftberger, R.; Berger, T.; Reindl, M. Myelin oligodendrocyte glycoprotein: deciphering a target in inflammatory demyelinating diseases. *Frontiers in immunology* **2017**, *8*, 529.
20. Tarlinton, R.E.; Khaiboullin, T.; Granatov, E.; Martynova, E.; Rizvanov, A.; Khaiboullina, S. The Interaction between Viral and Environmental Risk Factors in the Pathogenesis of Multiple Sclerosis International Journal of Molecular Sciences. *International Journal of Molecular Sciences*. **2019**, *20*, 303.
21. Madsen, C. The innovative development in interferon beta treatments of relapsing-remitting multiple sclerosis. *Brain and behavior* **2017**, *7*, e00696.
22. Morandi, E.; Tanasescu, R.; Tarlinton, R.E.; Constantinescu, C.S.; Zhang, W.; Tench, C.; Gran, B. The association between human endogenous retroviruses and multiple sclerosis: A systematic review and meta-analysis. *PLoS One* **2017**, *12*, e0172415, doi:10.1371/journal.pone.0172415.
23. tHart, B.A.; Kap, Y.S.; Morandi, E.; Laman, J.D.; Gran, B. EBV Infection and Multiple Sclerosis: Lessons from a Marmoset Model. *Trends in molecular medicine* **2016**, *22*, 1012-1024, doi:10.1016/j.molmed.2016.10.007.
24. Bartsch, T.; Rempe, T.; Leypoldt, F.; Riedel, C.; Jansen, O.; Berg, D.; Deuschl, G. The spectrum of progressive multifocal leukoencephalopathy: a practical approach. *Eur J Neurol* **2019**, 10.1111/ene.13906, doi:10.1111/ene.13906.
25. Makhani, N.; Banwell, B.; Tellier, R.; Yea, C.; McGovern, S.; O'Mahony, J.; Ahorro, J.M.; Arnold, D.; Sadovnick, A.D.; Marrie, R.A., et al. Viral exposures and MS outcome in a prospective cohort of children with acquired demyelination. *Multiple sclerosis (Houndmills, Basingstoke, England)* **2016**, *22*, 385-388, doi:10.1177/1352458515595876.
26. Simpson, S., Jr.; Taylor, B.; Dwyer, D.E.; Taylor, J.; Blizzard, L.; Ponsonby, A.L.; Pittas, F.; Dwyer, T.; van der Mei, I. Anti-HHV-6 IgG titer significantly predicts subsequent relapse risk in multiple sclerosis. *Multiple sclerosis (Houndmills, Basingstoke, England)* **2012**, *18*, 799-806, doi:10.1177/1352458511428081.
27. Niedobitek, G.; Meru, N.; Delecluse, H.J. Epstein-Barr virus infection and human malignancies. *International journal of experimental pathology* **2001**, *82*, 149-170.
28. Sehrawat, S.; Kumar, D.; Rouse, B.T. Herpesviruses: Harmonious pathogens but relevant cofactors in other diseases? *Frontiers in cellular and infection microbiology* **2018**, *8*.
29. Whitley, R. Herpesviruses. **1996**.
30. Kelly, G.L.; Milner, A.E.; Baldwin, G.S.; Bell, A.I.; Rickinson, A.B. Three restricted forms of Epstein-Barr virus latency counteracting apoptosis in c-myc-expressing Burkitt lymphoma cells. *Proceedings of the National Academy of Sciences* **2006**, *103*, 14935-14940.
31. Baird, N.L.; Yu, X.; Cohrs, R.J.; Gilden, D. Varicella zoster virus (VZV)-human neuron interaction. *Viruses* **2013**, *5*, 2106-2115.

32. Chen, D.H.; Jiang, H.; Lee, M.; Liu, F.; Zhou, Z.H. Three-dimensional visualization of tegument/capsid interactions in the intact human cytomegalovirus. *Virology* **1999**, *260*, 10-16.
33. *Cytomegaloviruses*. Mocarski ES, S.T., Pass RF, Ed.; Philadelphia : Wolters Kluwer Health/Lippincott Williams & Wilkins, ©2007: 2007.
34. Wang, B.; Nishimura, M.; Tang, H.; Kawabata, A.; Mahmoud, N.F.; Khanlari, Z.; Hamada, D.; Tsuruta, H.; Mori, Y. Crystal structure of human herpesvirus 6B tegument protein U14. *PLoS pathogens* **2016**, *12*.
35. Smatti, M.K.; Al-Sadeq, D.W.; Ali, N.H.; Pintus, G.; Abou-Saleh, H.; Nasrallah, G.K. Epstein–Barr virus epidemiology, serology, and genetic variability of LMP-1 oncogene among healthy population: an update. *Frontiers in oncology* **2018**, *8*, 211.
36. Crough, T.; Khanna, R. Immunobiology of human cytomegalovirus: from bench to bedside. *Clinical microbiology reviews* **2009**, *22*, 76-98.
37. Gibson, W. Structure and formation of the cytomegalovirus virion. In *Human cytomegalovirus*, Springer: 2008; pp. 187-204.
38. Hammerschmidt, W.; Sugden, B. Replication of Epstein–Barr Viral DNA. *Cold Spring Harbor perspectives in biology* **2013**, *5*, a013029.
39. Arbuckle, J.H.; Medveczky, M.M.; Luka, J.; Hadley, S.H.; Luegmayer, A.; Ablashi, D.; Lund, T.C.; Tolar, J.; De Meirleir, K.; Montoya, J.G. The latent human herpesvirus-6A genome specifically integrates in telomeres of human chromosomes in vivo and in vitro. *Proceedings of the National Academy of Sciences* **2010**, *107*, 5563-5568.
40. Kondo, K.; Kondo, T.; Okuno, T.; Takahashi, M.; Yamanishi, K. Latent human herpesvirus 6 infection of human monocytes/macrophages. *Journal of General Virology* **1991**, *72*, 1401-1408.
41. Manouchehrinia, A.; Tanasescu, R.; Kareem, H.; Jerca, O.P.; Jabeen, F.; Shafei, R.; Breuer, J.; Neal, K.; Irving, W.; Constantinescu, C.S. Prevalence of a history of prior varicella/herpes zoster infection in multiple sclerosis. *Journal of neurovirology* **2017**, *23*, 839-844, doi:10.1007/s13365-017-0569-1.
42. Jarius, S.; Eichhorn, P.; Franciotta, D.; Petereit, H.F.; Akman-Demir, G.; Wick, M.; Wildemann, B. The MRZ reaction as a highly specific marker of multiple sclerosis: re-evaluation and structured review of the literature. *Journal of neurology* **2017**, *264*, 453-466, doi:10.1007/s00415-016-8360-4.
43. Hernández-González, O.; Martínez-Palomo, A.; Sotelo, J.; Chávez-Munguía, B.; Ordoñez, G.; Talamás-Lara, D.; Pineda, B.; de Jesús Flores-Rivera, J.; Espinosa-Cantellano, M. Varicella-Zoster Virus in Cerebrospinal Fluid at Relapses of Multiple Sclerosis is Infective in Vitro. *Archives of medical research* **2018**, *49*, 350-355, doi:10.1016/j.arcmed.2018.10.001.
44. Sotelo, J.; Ordoñez, G.; Pineda, B.; Flores, J. The participation of varicella zoster virus in relapses of multiple sclerosis. *Clin Neurol Neurosurg* **2014**, *119*, 44-48, doi:10.1016/j.clineuro.2013.12.020.
45. Pfender, N.; Jelcic, I.; Linnebank, M.; Schwarz, U.; Martin, R. Reactivation of herpesvirus under fingolimod: A case of severe herpes simplex encephalitis. *Neurology* **2015**, *84*, 2377-2378, doi:10.1212/wnl.0000000000001659.
46. Perini, P.; Rinaldi, F.; Puthenpampil, M.; Marcon, M.; Perini, F.; Gallo, P. Herpes simplex virus encephalitis temporally associated with dimethyl fumarate-induced lymphopenia in a multiple sclerosis patient. *Mult Scler Relat Disord* **2018**, *26*, 68-70, doi:10.1016/j.msard.2018.09.009.

47. Dudek, M.I.R.; Thies, K.; Kammenhuber, S.; Bösel, J.; Rösche, J. HSV-2-encephalitis in a patient with multiple sclerosis treated with ocrelizumab. *Journal of neurology* **2019**, *266*, 2322-2323, doi:10.1007/s00415-019-09391-0.
48. Nourbakhsh, B.; Rutatangwa, A.; Waltz, M.; Rensel, M.; Moodley, M.; Graves, J.; Casper, T.C.; Waldman, A.; Belman, A.; Greenberg, B., et al. Heterogeneity in association of remote herpesvirus infections and pediatric MS. *Ann Clin Transl Neurol* **2018**, *5*, 1222-1228, doi:10.1002/acn3.636.
49. Etemadifar, M.; Izadi, A.; Sabeti, F.; Noorshargh, P. Anti-HSV-2 antibody in patients with MS and NMO. *Mult Scler Relat Disord* **2019**, *28*, 286-289, doi:10.1016/j.msard.2019.01.004.
50. Czarnowska, A.; Kapica-Topczewska, K.; Zajkowska, O.; Świerzbńska, R.; Chorąży, M.; Tarasiuk, J.; Zajkowska, J.; Kochanowicz, J.; Kułakowska, A. Herpesviridae Seropositivity in Patients with Multiple Sclerosis: First Polish Study. *European neurology* **2018**, *80*, 229-235, doi:10.1159/000496402.
51. Boukhvalova, M.S.; Mortensen, E.; Mbaye, A.; Lopez, D.; Kastrukoff, L.; Blanco, J.C.G. Herpes Simplex Virus 1 Induces Brain Inflammation and Multifocal Demyelination in the Cotton Rat *Sigmodon hispidus*. *J Virol* **2019**, *94*, doi:10.1128/jvi.01161-19.
52. Lee, D.H.; Zandian, M.; Kuo, J.; Mott, K.R.; Chen, S.; Ardit, M.; Ghiasi, H. Suppression of IL-12p70 formation by IL-2 or following macrophage depletion causes T-cell autoreactivity leading to CNS demyelination in HSV-1-infected mice. *PLoS pathogens* **2017**, *13*, e1006401, doi:10.1371/journal.ppat.1006401.
53. Najafi, S.; Ghane, M.; Poortahmasebi, V.; Jazayeri, S.M.; Yousefzadeh-Chabok, S. Prevalence of cytomegalovirus in patients with multiple sclerosis: a case-control study in northern Iran. *Jundishapur journal of microbiology* **2016**, *9*.
54. Sanadgol, N.; Ramroodi, N.; Ahmadi, G.A.; Komijani, M.; Moghtaderi, A.; Bouzari, M.; Rezaei, M.; Kardi, M.T.; Dabiri, S.; Moradi, M. Prevalence of cytomegalovirus infection and its role in total immunoglobulin pattern in Iranian patients with different subtypes of multiple sclerosis. *Microbiologica-Quarterly Journal of Microbiological Sciences* **2011**, *34*, 263.
55. Clerico, M.; De Mercanti, S.; Artusi, C.A.; Durelli, L.; Naismith, R.T. Active CMV infection in two patients with multiple sclerosis treated with alemtuzumab. *Multiple sclerosis (Houndmills, Basingstoke, England)* **2017**, *23*, 874-876, doi:10.1177/1352458516688350.
56. Vanheusden, M.; Stinissen, P.; t Hart, B.A.; Hellings, N. Cytomegalovirus: a culprit or protector in multiple sclerosis? *Trends in molecular medicine* **2015**, *21*, 16-23, doi:10.1016/j.molmed.2014.11.002.
57. Sundqvist, E.; Bergström, T.; Daialhosein, H.; Nyström, M.; Sundström, P.; Hillert, J.; Alfredsson, L.; Kockum, I.; Olsson, T. Cytomegalovirus seropositivity is negatively associated with multiple sclerosis. *Multiple Sclerosis Journal* **2014**, *20*, 165-173.
58. Zivadinov, R.; Nasuelli, D.; Tommasi, M.A.; Serafin, M.; Bratina, A.; Ukmar, M.; Pirko, I.; Johnson, A.J.; Furlan, C.; Pozzi-Mucelli, R.S. Positivity of cytomegalovirus antibodies predicts a better clinical and radiological outcome in multiple sclerosis patients. *Neurological research* **2006**, *28*, 262-269.
59. Waubant, E.; Mowry, E.M.; Krupp, L.; Chitnis, T.; Yeh, E.; Kuntz, N.; Ness, J.; Chabas, D.; Strober, J.; McDonald, J. Common viruses associated with lower pediatric multiple sclerosis risk. *Neurology* **2011**, *76*, 1989-1995.
60. Langer-Gould, A.; Wu, J.; Lucas, R.; Smith, J.; Gonzales, E.; Amezcua, L.; Haraszti, S.; Chen, L.H.; Quach, H.; James, J.A., et al. Epstein-Barr virus, cytomegalovirus,

- and multiple sclerosis susceptibility: A multiethnic study. *Neurology* **2017**, *89*, 1330-1337, doi:10.1212/wnl.0000000000004412.
61. Alari-Pahissa, E.; Moreira, A.; Zabalza, A.; Alvarez-Lafuente, R.; Munteis, E.; Vera, A.; Arroyo, R.; Alvarez-Cermeno, J.C.; Villar, L.M.; Lopez-Botet, M., et al. Low cytomegalovirus seroprevalence in early multiple sclerosis: a case for the 'hygiene hypothesis'? *Eur J Neurol* **2018**, *25*, 925-933, doi:10.1111/ene.13622.
  62. Pakpoor, J.; Pakpoor, J.; Disanto, G.; Giovannoni, G.; Ramagopalan, S.V. Cytomegalovirus and multiple sclerosis risk. *Journal of neurology* **2013**, *260*, 1658-1660.
  63. Pirko, I.; Cardin, R.; Chen, Y.; Lohrey, A.K.; Lindquist, D.M.; Dunn, R.S.; Zivadinov, R.; Johnson, A.J. CMV infection attenuates the disease course in a murine model of multiple sclerosis. *PloS one* **2012**, *7*, e32767.
  64. Vanheusden, M.; Broux, B.; Welten, S.P.; Peeters, L.M.; Panagioti, E.; Van Wijmeersch, B.; Somers, V.; Stinissen, P.; Arens, R.; Hellings, N. Cytomegalovirus infection exacerbates autoimmune mediated neuroinflammation. *Scientific reports* **2017**, *7*, 663.
  65. Dumitriu, I.E. The life (and death) of CD 4+ CD 28null T cells in inflammatory diseases. *Immunology* **2015**, *146*, 185-193.
  66. Fraussen, J.D.; Stinissen, P. Marielle Thewissen, Veerle Somers, Niels Hellings, Judith. *Journal of immunology (Baltimore, Md. : 1950)* **2007**, *179*, 6514-6523.
  67. Leibovitch, E.C.; Jacobson, S. Evidence linking HHV-6 with multiple sclerosis: an update. *Current opinion in virology* **2014**, *9*, 127-133.
  68. Merelli, E.; Bedin, R.; Sola, P.; Barozzi, P.; Mancardi, G.; Ficarra, G.; Franchini, G. Human herpes virus 6 and human herpes virus 8 DNA sequences in brains of multiple sclerosis patients, normal adults and children. *Journal of neurology* **1997**, *244*, 450-454.
  69. Liedtke, W.; Malessa, R.; Faustmann, P.M.; Eis-Hübinger, A.-M. Human herpesvirus 6 polymerase chain reaction findings in human immunodeficiency virus associated neurological disease and multiple sclerosis. *Journal of neurovirology* **1995**, *1*, 253-258.
  70. Opsahl, M.L.; Kennedy, P.G. Early and late HHV-6 gene transcripts in multiple sclerosis lesions and normal appearing white matter. *Brain* **2005**, *128*, 516-527.
  71. Challoner, P.B.; Smith, K.T.; Parker, J.D.; MacLeod, D.L.; Coulter, S.N.; Rose, T.M.; Schultz, E.R.; Bennett, J.L.; Garber, R.L.; Chang, M. Plaque-associated expression of human herpesvirus 6 in multiple sclerosis. *Proceedings of the National Academy of Sciences* **1995**, *92*, 7440-7444.
  72. Hogestyn, J.M.; Mock, D.J.; Mayer-Proschel, M. Contributions of neurotropic human herpesviruses herpes simplex virus 1 and human herpesvirus 6 to neurodegenerative disease pathology. *Neural regeneration research* **2018**, *13*, 211-221, doi:10.4103/1673-5374.226380.
  73. Pormohammad, A.; Azimi, T.; Falah, F.; Faghihloo, E. Relationship of human herpes virus 6 and multiple sclerosis: A systematic review and meta-analysis. *Journal of cellular physiology* **2018**, *233*, 2850-2862, doi:10.1002/jcp.26000.
  74. Pakpoor, J.; Disanto, G.; Gerber, J.E.; Dobson, R.; Meier, U.C.; Giovannoni, G.; Ramagopalan, S.V. The risk of developing multiple sclerosis in individuals seronegative for Epstein-Barr virus: a meta-analysis. *Multiple Sclerosis Journal* **2013**, *19*, 162-166.
  75. Santiago, O.; Gutierrez, J.; Sorlozano, A.; de Dios Luna, J.; Villegas, E.; Fernandez, O. Relation between Epstein-Barr virus and multiple sclerosis: analytic study of scientific production. *European journal of clinical microbiology & infectious diseases*

- : official publication of the European Society of Clinical Microbiology **2010**, *29*, 857-866, doi:10.1007/s10096-010-0940-0.
76. Hassani, A.; Corboy, J.R.; Al-Salam, S.; Khan, G. Epstein-Barr virus is present in the brain of most cases of multiple sclerosis and may engage more than just B cells. *PLoS One* **2018**, *13*, e0192109, doi:10.1371/journal.pone.0192109.
  77. Giess, R.M.; Pfuhl, C.; Behrens, J.R.; Rasche, L.; Freitag, E.; Khalighy, N.; Otto, C.; Wuerfel, J.; Brandt, A.U.; Hofmann, J., et al. Epstein-Barr virus antibodies in serum and DNA load in saliva are not associated with radiological or clinical disease activity in patients with early multiple sclerosis. *PLoS One* **2017**, *12*, e0175279, doi:10.1371/journal.pone.0175279.
  78. Ruprecht, K.; Wildemann, B.; Jarius, S. Low intrathecal antibody production despite high seroprevalence of Epstein-Barr virus in multiple sclerosis: a review of the literature. *Journal of neurology* **2018**, *265*, 239-252, doi:10.1007/s00415-017-8656-z.
  79. Lang, H.L.; Jacobsen, H.; Ikemizu, S.; Andersson, C.; Harlos, K.; Madsen, L.; Hjorth, P.; Sondergaard, L.; Svejgaard, A.; Wucherpfennig, K. A functional and structural basis for TCR cross-reactivity in multiple sclerosis. *Nature immunology* **2002**, *3*, 940.
  80. van Noort, J.M.; Bajramovic, J.J.; Plomp, A.C.; van Stipdonk, M.J. Mistaken self, a novel model that links microbial infections with myelin-directed autoimmunity in multiple sclerosis. *Journal of neuroimmunology* **2000**, *105*, 46-57.
  81. Pouly, S.; Antel, J.P. Multiple sclerosis and central nervous system demyelination. *Journal of autoimmunity* **1999**, *13*, 297-306.
  82. Lindsey, J.W. Antibodies to the Epstein-Barr virus proteins BFRF3 and BRRF2 cross-react with human proteins. *Journal of neuroimmunology* **2017**, *310*, 131-134, doi:10.1016/j.jneuroim.2017.07.013.
  83. Simpson, S., Jr.; Taylor, B.; Burrows, J.; Burrows, S.; Dwyer, D.E.; Taylor, J.; Ponsonby, A.L.; Blizzard, L.; Dwyer, T.; Pittas, F., et al. EBV & HHV6 reactivation is infrequent and not associated with MS clinical course. *Acta neurologica Scandinavica* **2014**, *130*, 328-337, doi:10.1111/ane.12268.
  84. Kaiser, C.; Laux, G.; Eick, D.; Jochner, N.; Bornkamm, G.W.; Kempkes, B. The proto-oncogene c-myc is a direct target gene of Epstein-Barr virus nuclear antigen 2. *Journal of virology* **1999**, *73*, 4481-4484.
  85. Nikitin, P.A.; Yan, C.M.; Forte, E.; Bocedi, A.; Tourigny, J.P.; White, R.E.; Allday, M.J.; Patel, A.; Dave, S.S.; Kim, W. An ATM/Chk2-mediated DNA damage-responsive signaling pathway suppresses Epstein-Barr virus transformation of primary human B cells. *Cell host & microbe* **2010**, *8*, 510-522.
  86. Cohen, J.I. A region of herpes simplex virus VP16 can substitute for a transforming domain of Epstein-Barr virus nuclear protein 2. *Proceedings of the National Academy of Sciences* **1992**, *89*, 8030-8034.
  87. Wang, L.; Grossman, S.R.; Kieff, E. Epstein-Barr virus nuclear protein 2 interacts with p300, CBP, and PCAF histone acetyltransferases in activation of the LMP1 promoter. *Proceedings of the National Academy of Sciences* **2000**, *97*, 430-435.
  88. Ricigliano, V.A.; Handel, A.E.; Sandve, G.K.; Annibaldi, V.; Ristori, G.; Mechelli, R.; Cader, M.Z.; Salvetti, M. EBNA2 binds to genomic intervals associated with multiple sclerosis and overlaps with vitamin D receptor occupancy. *PloS one* **2015**, *10*, e0119605.
  89. Zhao, B.; Zou, J.; Wang, H.; Johannsen, E.; Peng, C.-w.; Quackenbush, J.; Mar, J.C.; Morton, C.C.; Freedman, M.L.; Blacklow, S.C. Epstein-Barr virus exploits intrinsic B-lymphocyte transcription programs to achieve immortal cell growth. *Proceedings of the National Academy of Sciences* **2011**, *108*, 14902-14907.

90. Sintzel, M.B.; Rametta, M.; Reder, A.T. Vitamin D and multiple sclerosis: a comprehensive review. *Neurology and therapy* **2018**, *7*, 59-85.
91. Harley, J.B.; Chen, X.; Pujato, M.; Miller, D.; Maddox, A.; Forney, C.; Magnusen, A.F.; Lynch, A.; Chetal, K.; Yukawa, M., et al. Transcription factors operate across disease loci, with EBNA2 implicated in autoimmunity. *Nature genetics* **2018**, *50*, 699-707, doi:10.1038/s41588-018-0102-3.
92. Fox, D.M.; Mundinano, I.C.; Bourne, J.A. Prehensile kinematics of the marmoset monkey: Implications for the evolution of visually-guided behaviors. *Journal of Comparative Neurology* **2019**, *527*, 1495-1507.
93. Ehlers, B.; Spieß, K.; Leendertz, F.; Peeters, M.; Boesch, C.; Gatherer, D.; McGeoch, D.J. Lymphocryptovirus phylogeny and the origins of Epstein-Barr virus. **2009**.
94. Jagessar, S.A.; Fagrouch, Z.; Heijmans, N.; Bauer, J.; Laman, J.D.; Oh, L.; Migone, T.; Verschoor, E.J.; Bert, A. The different clinical effects of anti-BLyS, anti-APRIL and anti-CD20 antibodies point at a critical pathogenic role of  $\gamma$ -herpesvirus infected B cells in the marmoset EAE model. *Journal of Neuroimmune Pharmacology* **2013**, *8*, 727-738.
95. Bert, A.; Kap, Y.S.; Morandi, E.; Laman, J.D.; Gran, B. EBV infection and multiple sclerosis: lessons from a marmoset model. *Trends in molecular medicine* **2016**, *22*, 1012-1024.
96. Pender, M.P.; Csurhes, P.A.; Smith, C.; Douglas, N.L.; Neller, M.A.; Matthews, K.K.; Beagley, L.; Rehan, S.; Crooks, P.; Hopkins, T.J., et al. Epstein-Barr virus-specific T cell therapy for progressive multiple sclerosis. *JCI insight* **2018**, *3*, doi:10.1172/jci.insight.124714.
97. Tan, C.S.; Koralnik, I.J. Progressive multifocal leukoencephalopathy and other disorders caused by JC virus: clinical features and pathogenesis. *The Lancet Neurology* **2010**, *9*, 425-437.
98. Del Valle, L.; White, M.K.; Khalili, K. Potential mechanisms of the human polyomavirus JC in neural oncogenesis. *Journal of Neuropathology & Experimental Neurology* **2008**, *67*, 729-740.
99. Meneguzzi, G.; Pignatti, P.F.; Barbanti-Brodano, G.; Milanesi, G. Minichromosome from BK virus as a template for transcription in vitro. *Proceedings of the National Academy of Sciences* **1978**, *75*, 1126-1130.
100. Khalili, K.; Gordon, J.; White, M.K. The polyomavirus, JCV, and its involvement in human disease. In *Polyomaviruses and human diseases*, Springer: 2006; pp. 274-287.
101. Walker, D.L. The epidemiology of human polyomaviruses. *Progress in Clinical & Biological Research* **1983**, *105*, 99-106.
102. Chang, H.; Wang, M.; Tsai, R.-T.; Lin, H.-S.; Huan, J.-S.; Wang, W.-C.; Chang, D. High incidence of JC viraemia in JC-seropositive older individuals. *Journal of neurovirology* **2002**, *8*, 447-451.
103. Beltrami, S.; Gordon, J. Immune surveillance and response to JC virus infection and PML. *Journal of neurovirology* **2014**, *20*, 137-149.
104. Saribaş, A.S.; Özdemir, A.; Lam, C.; Safak, M. JC virus-induced progressive multifocal leukoencephalopathy. *Future virology* **2010**, *5*, 313-323.
105. Gorelik, L.; Reid, C.; Testa, M.; Brickelmaier, M.; Bossolasco, S.; Pazzi, A.; Bestetti, A.; Carmillo, P.; Wilson, E.; McAuliffe, M. Progressive multifocal leukoencephalopathy (PML) development is associated with mutations in JC virus capsid protein VP1 that change its receptor specificity. *Journal of Infectious Diseases* **2011**, *204*, 103-114.



106. Sabath, B.F.; Major, E.O. Traffic of JC virus from sites of initial infection to the brain: the path to progressive multifocal leukoencephalopathy. *The Journal of infectious diseases* **2002**, *186*, S180-S186.
107. Kleinschmidt-DeMasters, B.; Tyler, K.L. Progressive multifocal leukoencephalopathy complicating treatment with natalizumab and interferon beta-1a for multiple sclerosis. *New England Journal of Medicine* **2005**, *353*, 369-374.
108. Warnke, C.; Menge, T.; Hartung, H.-P.; Racke, M.K.; Cravens, P.D.; Bennett, J.L.; Frohman, E.M.; Greenberg, B.M.; Zamvil, S.S.; Gold, R. Natalizumab and progressive multifocal leukoencephalopathy: what are the causal factors and can it be avoided? *Archives of neurology* **2010**, *67*, 923-930.
109. Stüve, O.; Marra, C.M.; Jerome, K.R.; Cook, L.; Cravens, P.D.; Cepok, S.; Frohman, E.M.; Phillips, J.T.; Arendt, G.; Hemmer, B. Immune surveillance in multiple sclerosis patients treated with natalizumab. *Annals of Neurology: Official Journal of the American Neurological Association and the Child Neurology Society* **2006**, *59*, 743-747.
110. Assetta, B.; Atwood, W.J. The biology of JC polyomavirus. *Biological chemistry* **2017**, *398*, 839-855, doi:10.1515/hsz-2016-0345.
111. Lander, E.; Linton, L.; Birren, B.; Nusbaum, C.; Zody, M.; Baldwin, J. Initial sequencing and analysis of the human genome. Nature [Internet]. Nature Publishing Group: 2001.
112. Jern, P.; Coffin, J.M. Effects of retroviruses on host genome function. *Annual review of genetics* **2008**, *42*, 709-732.
113. Medstrand, P.; Landry, J.-R.; Mager, D.L. Long terminal repeats are used as alternative promoters for the endothelin B receptor and apolipoprotein CI genes in humans. *Journal of Biological Chemistry* **2001**, *276*, 1896-1903.
114. Ariza, M.-E.; Williams, M.V. A human endogenous retrovirus K dUTPase triggers a TH1, TH17 cytokine response: does it have a role in psoriasis? *Journal of Investigative Dermatology* **2011**, *131*, 2419-2427.
115. Saito, T.; Miyagawa, K.; Chen, S.-Y.; Tamosiuniene, R.; Wang, L.; Sharpe, O.; Samayoa, E.; Harada, D.; Moonen, J.-R.A.; Cao, A. Upregulation of human endogenous retrovirus-K is linked to immunity and inflammation in pulmonary arterial hypertension. *Circulation* **2017**, *136*, 1920-1935.
116. Grandi, N.; Tramontano, E. Type W human endogenous retrovirus (HERV-W) integrations and their mobilization by L1 machinery: contribution to the human transcriptome and impact on the host physiopathology. *Viruses* **2017**, *9*, 162.
117. Vargiu, L.; Rodriguez-Tomé, P.; Sperber, G.O.; Cadeddu, M.; Grandi, N.; Blikstad, V.; Tramontano, E.; Blomberg, J. Classification and characterization of human endogenous retroviruses; mosaic forms are common. *Retrovirology* **2016**, *13*, 7.
118. Christensen, T.; Sørensen, P.D.; Riemann, H.; Hansen, H.; Møller-Larsen, A. Expression of sequence variants of endogenous retrovirus RGH in particle form in multiple sclerosis. *The Lancet* **1998**, *352*, 1033.
119. Perron, H.; Garson, J.; Bedin, F.; Beseme, F.; Paranhos-Baccala, G.; Komurian-Pradel, F.; Mallet, F.; Tuke, P.; Voisset, C.; Blond, J. Molecular identification of a novel retrovirus repeatedly isolated from patients with multiple sclerosis. *Proceedings of the National Academy of Sciences* **1997**, *94*, 7583-7588.
120. Johnston, J.B.; Silva, C.; Holden, J.; Warren, K.G.; Clark, A.W.; Power, C. Monocyte activation and differentiation augment human endogenous retrovirus expression: implications for inflammatory brain diseases. *Annals of Neurology: Official Journal of the American Neurological Association and the Child Neurology Society* **2001**, *50*, 434-442.

121. Perron, H.; Lazarini, F.; Ruprecht, K.; Péchoux-Longin, C.; Seilhean, D.; Sazdovitch, V.; Créange, A.; Battail-Poirot, N.; Sibai, G.; Santoro, L. Human endogenous retrovirus (HERV)-W ENV and GAG proteins: physiological expression in human brain and pathophysiological modulation in multiple sclerosis lesions. *Journal of neurovirology* **2005**, *11*, 23-33.
122. Mameli, G.; Astone, V.; Arru, G.; Marconi, S.; Lovato, L.; Serra, C.; Sotgiu, S.; Bonetti, B.; Dolei, A. Brains and peripheral blood mononuclear cells of multiple sclerosis (MS) patients hyperexpress MS-associated retrovirus/HERV-W endogenous retrovirus, but not Human herpesvirus 6. *Journal of General Virology* **2007**, *88*, 264-274.
123. Garson, J.; Tuke, P.; Giraud, P.; Paranhos-Baccala, G.; Perron, H. Detection of virion-associated MSR-V-RNA in serum of patients with multiple sclerosis. *The Lancet* **1998**, *351*, 33.
124. Serra, C.; Sotgiu, S.; Mameli, G.; Pugliatti, M.; Rosati, G.; Dolei, A. Multiple sclerosis and multiple sclerosis-associated retrovirus in Sardinia. *Neurological Sciences* **2001**, *22*, 171-173.
125. Tarlinton, R.; Wang, B.; Morandi, E.; Gran, B.; Khaiboullin, T.; Martynova, E.; Rizvanov, A.; Khaiboullina, S. Differential Expression of HERV-W in Peripheral Blood in Multiple Sclerosis and Healthy Patients in Two Different Ethnic Groups. *Frontiers in Pharmacology* **2020**, *10*, 1645.
126. Sotgiu, S.; Arru, G.; Mameli, G.; Serra, C.; Pugliatti, M.; Rosati, G.; Dolei, A. Multiple sclerosis-associated retrovirus in early multiple sclerosis: a six-year follow-up of a Sardinian cohort. *Multiple Sclerosis Journal* **2006**, *12*, 698-703.
127. Garcia-Montojo, M.; Dominguez-Mozo, M.; Arias-Leal, A.; Garcia-Martinez, Á.; De las Heras, V.; Casanova, I.; Faucard, R.; Gehin, N.; Madeira, A.; Arroyo, R. The DNA copy number of human endogenous retrovirus-W (MSRV-type) is increased in multiple sclerosis patients and is influenced by gender and disease severity. *PloS one* **2013**, *8*, e53623.
128. García-Montojo, M.; de la Hera, B.; Varadé, J.; de la Encarnación, A.; Camacho, I.; Domínguez-Mozo, M.; Arias-Leal, A.; García-Martínez, Á.; Casanova, I.; Izquierdo, G. HERV-W polymorphism in chromosome X is associated with multiple sclerosis risk and with differential expression of MSR-V. *Retrovirology* **2014**, *11*, 2.
129. Dolei, A.; Serra, C.; Mameli, G.; Pugliatti, M.; Sechi, G.; Cirotto, M.; Rosati, G.; Sotgiu, S. Multiple sclerosis-associated retrovirus (MSRV) in Sardinian MS patients. *Neurology* **2002**, *58*, 471-473.
130. Brudek, T.; Christensen, T.; Aagaard, L.; Petersen, T.; Hansen, H.J.; Møller-Larsen, A. B cells and monocytes from patients with active multiple sclerosis exhibit increased surface expression of both HERV-H Env and HERV-W Env, accompanied by increased seroreactivity. *Retrovirology* **2009**, *6*, 104.
131. Firouzi, R.; Rolland, A.; Michel, M.; Jouvin-Marche, E.; Hauw, J.; Malcus-Vocanson, C.; Lazarini, F.; Gebuhrer, L.; Seigneurin, J.; Touraine, J. Multiple sclerosis-associated retrovirus particles cause T lymphocyte-dependent death with brain hemorrhage in humanized SCID mice model. *Journal of neurovirology* **2003**, *9*, 79-93.
132. de Luca, V.; Martins Higa, A.; Malta Romano, C.; Pimenta Mambrini, G.; Peroni, L.A.; Trivinho-Strixino, F.; Lima Leite, F. Cross-reactivity between myelin oligodendrocyte glycoprotein and human endogenous retrovirus W protein: nanotechnological evidence for the potential trigger of multiple sclerosis. *Micron* **2019**, *120*, 66-73, doi:10.1016/j.micron.2019.02.005.

133. Ramasamy, R.; Mohammed, F.; Meier, U.C. HLA DR2b-binding peptides from human endogenous retrovirus envelope, Epstein-Barr virus and brain proteins in the context of molecular mimicry in multiple sclerosis. *Immunology letters* **2020**, *217*, 15-24, doi:10.1016/j.imlet.2019.10.017.
134. do Olival, G.S.; Faria, T.S.; Nali, L.H.; de Oliveira, A.C.; Casseb, J.; Vidal, J.E.; Cavenaghi, V.B.; Tilbery, C.P.; Moraes, L.; Fink, M.C., et al. Genomic analysis of ERVWE2 locus in patients with multiple sclerosis: absence of genetic association but potential role of human endogenous retrovirus type W elements in molecular mimicry with myelin antigen. *Frontiers in microbiology* **2013**, *4*, 172, doi:10.3389/fmicb.2013.00172.
135. de Luca, V.; Higa, A.M.; Romano, C.M.; Mambrini, G.P.; Peroni, L.A.; Trivinho-Strixino, F.; Leite, F.L. Cross-reactivity between myelin oligodendrocyte glycoprotein and human endogenous retrovirus W protein: nanotechnological evidence for the potential trigger of multiple sclerosis. *Micron* **2019**, *120*, 66-73.
136. Ramasamy, R.; Joseph, B.; Whittall, T. Potential molecular mimicry between the human endogenous retrovirus W family envelope proteins and myelin proteins in multiple sclerosis. *Immunology letters* **2017**, *183*, 79-85, doi:10.1016/j.imlet.2017.02.003.
137. Tu, X.; Li, S.; Zhao, L.; Xiao, R.; Wang, X.; Zhu, F. Human leukemia antigen-A\* 0201-restricted epitopes of human endogenous retrovirus W family envelope (HERV-W env) induce strong cytotoxic T lymphocyte responses. *Virologica Sinica* **2017**, *32*, 280-289.
138. Rolland, A.; Jouvin-Marche, E.; Viret, C.; Faure, M.; Perron, H.; Marche, P.N. The envelope protein of a human endogenous retrovirus-W family activates innate immunity through CD14/TLR4 and promotes Th1-like responses. *The Journal of Immunology* **2006**, *176*, 7636-7644.
139. Duperray, A.; Barbe, D.; Raguenez, G.; Weksler, B.B.; Romero, I.A.; Couraud, P.O.; Perron, H.; Marche, P.N. Inflammatory response of endothelial cells to a human endogenous retrovirus associated with multiple sclerosis is mediated by TLR4. *International immunology* **2015**, *27*, 545-553, doi:10.1093/intimm/dxv025.
140. Perron, H.; Dougier-Reynaud, H.L.; Lomparski, C.; Popa, I.; Firouzi, R.; Bertrand, J.B.; Marusic, S.; Portoukalian, J.; Jouvin-Marche, E.; Villiers, C.L., et al. Human endogenous retrovirus protein activates innate immunity and promotes experimental allergic encephalomyelitis in mice. *PLoS One* **2013**, *8*, e80128, doi:10.1371/journal.pone.0080128.
141. Garcia-Montojo, M.; Rodriguez-Martin, E.; Ramos-Mozo, P.; Ortega-Madueño, I.; Dominguez-Mozo, M.I.; Arias-Leal, A.; García-Martínez, M.; Casanova, I.; Galan, V.; Arroyo, R., et al. Syncytin-1/HERV-W envelope is an early activation marker of leukocytes and is upregulated in multiple sclerosis patients. *Eur J Immunol* **2020**, *50*, 685-694, doi:10.1002/eji.201948423.
142. Gjelstrup, M.C.; Stilund, M.; Petersen, T.; Møller, H.J.; Petersen, E.L.; Christensen, T. Subsets of activated monocytes and markers of inflammation in incipient and progressed multiple sclerosis. *Immunology and cell biology* **2018**, *96*, 160-174, doi:10.1111/imcb.1025.
143. Carstensen, M.; Christensen, T.; Stilund, M.; Møller, H.J.; Petersen, E.L.; Petersen, T. Activated monocytes and markers of inflammation in newly diagnosed multiple sclerosis. *Immunology and cell biology* **2020**, 10.1111/imcb.12337, doi:10.1111/imcb.12337.

144. Azébi, S.; Batsché, E.; Michel, F.; Kornobis, E.; Muchardt, C. Expression of endogenous retroviruses reflects increased usage of atypical enhancers in T cells. *The EMBO journal* **2019**, *38*, doi:10.15252/embj.2018101107.
145. Kouwenhoven, M.; Teleshova, N.; Ozenci, V.; Press, R.; Link, H. Monocytes in multiple sclerosis: phenotype and cytokine profile. *Journal of neuroimmunology* **2001**, *112*, 197-205, doi:10.1016/s0165-5728(00)00396-9.
146. Ruprecht, K.; Mayer, J. On the origin of a pathogenic HERV-W envelope protein present in multiple sclerosis lesions. *Proc Natl Acad Sci U S A* **2019**, *116*, 19791-19792, doi:10.1073/pnas.1911703116.
147. Kremer, D.; Forster, M.; Schichel, T.; Gottle, P.; Hartung, H.P.; Perron, H.; Kury, P. The neutralizing antibody GNbAC1 abrogates HERV-W envelope protein-mediated oligodendroglial maturation blockade. *Multiple sclerosis (Houndmills, Basingstoke, England)* **2014**, 10.1177/1352458514560926, doi:10.1177/1352458514560926.
148. Diebold, M.; Derfuss, T. The monoclonal antibody GNbAC1: targeting human endogenous retroviruses in multiple sclerosis. *Ther Adv Neurol Disord* **2019**, *12*, 1756286419833574, doi:10.1177/1756286419833574.
149. Kremer, D.; Gruchot, J.; Weyers, V.; Oldemeier, L.; Göttle, P.; Healy, L.; Ho Jang, J.; Kang, T.X.Y.; Volsko, C.; Dutta, R., et al. pHERV-W envelope protein fuels microglial cell-dependent damage of myelinated axons in multiple sclerosis. *Proc Natl Acad Sci U S A* **2019**, *116*, 15216-15225, doi:10.1073/pnas.1901283116.
150. Irizar, H.; Muñoz-Culla, M.; Sepúlveda, L.; Sáenz-Cuesta, M.; Prada, Á.; Castillo-Triviño, T.; Zamora-López, G.; de Munain, A.L.; Olascoaga, J.; Otaegui, D. Transcriptomic profile reveals gender-specific molecular mechanisms driving multiple sclerosis progression. *PloS one* **2014**, *9*, e90482.
151. Morandi, E.; Tanasescu, R.; Tarlinton, R.E.; Constantin-Teodosiu, D.; Gran, B. Do Antiretroviral Drugs Protect From Multiple Sclerosis by Inhibiting Expression of MS-Associated Retrovirus? *Frontiers in immunology* **2018**, *9*.
152. Mameli, G.; Madeddu, G.; Mei, A.; Uleri, E.; Poddighe, L.; Delogu, L.G.; Maida, I.; Babudieri, S.; Serra, C.; Manetti, R., et al. Activation of MSR-type endogenous retroviruses during infectious mononucleosis and Epstein-Barr virus latency: the missing link with multiple sclerosis? *PLoS One* **2013**, *8*, e78474, doi:10.1371/journal.pone.0078474.
153. Charvet, B.; Reynaud, J.M.; Gourru-Lesimple, G.; Perron, H.; Marche, P.N.; Horvat, B. Induction of Proinflammatory Multiple Sclerosis-Associated Retrovirus Envelope Protein by Human Herpesvirus-6A and CD46 Receptor Engagement. *Frontiers in immunology* **2018**, *9*, 2803, doi:10.3389/fimmu.2018.02803.
154. Ruprecht, K.; Obojes, K.; Wengel, V.; Gronen, F.; Kim, K.S.; Perron, H.; Schneider-Schaulies, J.; Rieckmann, P. Regulation of human endogenous retrovirus W protein expression by herpes simplex virus type 1: implications for multiple sclerosis. *Journal of neurovirology* **2006**, *12*, 65-71.
155. Nellaker, C.; Yao, Y.; Jones-Brando, L.; Mallet, F.; Yolken, R.H.; Karlsson, H. Transactivation of elements in the human endogenous retrovirus W family by viral infection. *Retrovirology* **2006**, *3*, 44.
156. Lee, W.J.; Kwun, H.J.; Kim, H.S.; Jang, K.L. Activation of the human endogenous retrovirus W long terminal repeat by herpes simplex virus type 1 immediate early protein 1. *Molecules and cells* **2003**, *15*, 75-80.
157. Brudek, T.; Luhdorf, P.; Christensen, T.; Hansen, H.J.; Moller-Larsen, A. Activation of endogenous retrovirus reverse transcriptase in multiple sclerosis patient lymphocytes by inactivated HSV-1, HHV-6 and VZV. *Journal of neuroimmunology* **2007**, *187*, 147-155.

158. Fox, E.J.; Buckle, G.J.; Singer, B.; Singh, V.; Boster, A. Lymphopenia and DMTs for relapsing forms of MS: Considerations for the treating neurologist. *Neurology: Clinical Practice* **2019**, *9*, 53-63.
159. Ivashkiv, L.B.; Donlin, L.T. Regulation of type I interferon responses. *Nature reviews Immunology* **2014**, *14*, 36-49.
160. Wootla, B.; Watzlawik, J.O.; Stavropoulos, N.; Wittenberg, N.J.; Dasari, H.; Abdelrahim, M.A.; Henley, J.R.; Oh, S.-H.; Warrington, A.E.; Rodriguez, M. Recent advances in monoclonal antibody therapies for multiple sclerosis. *Expert opinion on biological therapy* **2016**, *16*, 827-839.
161. Bossowski, A.; Urban, M.; Stasiak-Barmuta, A.; Turowski, D. Expression of very late antigen-4 and lymphocyte function-associated antigen-1 on peripheral blood lymphocytes from patients with graves disease. *Pediatric research* **2002**, *52*, 533.
162. Yaldizli, Ö.; Putzki, N. Natalizumab in the treatment of multiple sclerosis. *Therapeutic advances in neurological disorders* **2009**, *2*, 115-128.
163. Yednock, T.A.; Cannon, C.; Fritz, L.C.; Sanchez-Madrid, F.; Steinman, L.; Karin, N. Prevention of experimental autoimmune encephalomyelitis by antibodies against  $\alpha 4\beta 1$  integrin. *Nature* **1992**, *356*, 63.
164. Burkly, L.C.; Jakubowski, A.; Newman, B.M.; Rosa, M.D.; Chi-Rosso, G.; Lobb, R.R. Signaling by vascular cell adhesion molecule-1 (VCAM-1) through VLA-4 promotes CD3-dependent T cell proliferation. *European journal of immunology* **1991**, *21*, 2871-2875.
165. Damle, N.K.; Aruffo, A. Vascular cell adhesion molecule 1 induces T-cell antigen receptor-dependent activation of CD4+ T lymphocytes. *Proceedings of the National Academy of Sciences* **1991**, *88*, 6403-6407.
166. Assetta, B.; Atwood, W.J. The biology of JC polyomavirus. *Biological chemistry* **2017**, *398*, 839-855.
167. Brandstadter, R.; Sand, I.K. The use of natalizumab for multiple sclerosis. *Neuropsychiatric disease and treatment* **2017**, *13*, 1691.
168. Rao, S.P.; Sancho, J.; Campos-Rivera, J.; Boutin, P.M.; Severy, P.B.; Weeden, T.; Shankara, S.; Roberts, B.L.; Kaplan, J.M. Human peripheral blood mononuclear cells exhibit heterogeneous CD52 expression levels and show differential sensitivity to alemtuzumab mediated cytotoxicity. *PloS one* **2012**, *7*, e39416.
169. Hu, Y.; Turner, M.J.; Shields, J.; Gale, M.S.; Hutto, E.; Roberts, B.L.; Siders, W.M.; Kaplan, J.M. Investigation of the mechanism of action of alemtuzumab in a human CD52 transgenic mouse model. *Immunology* **2009**, *128*, 260-270.
170. Malmeström, C.; Andersson, B.A.; Lycke, J. First reported case of diabetes mellitus type 1 as a possible secondary autoimmune disease following alemtuzumab treatment in MS. *Journal of neurology* **2014**, *261*, 2016-2018.
171. OCREVUS. (Ocrelizumab). Prescribing Information. Available online: <https://www.ocrevus.com/> (accessed on

