

# Accepted Manuscript

Production and characterization of a  $\beta$ -glucosidase from *Issatchenkia terricola* and its use for hydrolysis of aromatic precursors in Cabernet Sauvignon wine

Stefani de Ovalle, Ivana Cavello, Beatriz M. Brena, Sebastian Cavalitto, Paula González-Pombo



PII: S0023-6438(17)30701-6

DOI: [10.1016/j.lwt.2017.09.026](https://doi.org/10.1016/j.lwt.2017.09.026)

Reference: YFSTL 6541

To appear in: *LWT - Food Science and Technology*

Received Date: 26 May 2017

Revised Date: 13 September 2017

Accepted Date: 17 September 2017

Please cite this article as: de Ovalle, S., Cavello, I., Brena, B.M., Cavalitto, S., González-Pombo, P., Production and characterization of a  $\beta$ -glucosidase from *Issatchenkia terricola* and its use for hydrolysis of aromatic precursors in Cabernet Sauvignon wine, *LWT - Food Science and Technology* (2017), doi: 10.1016/j.lwt.2017.09.026.

This is a PDF file of an unedited manuscript that has been accepted for publication. As a service to our customers we are providing this early version of the manuscript. The manuscript will undergo copyediting, typesetting, and review of the resulting proof before it is published in its final form. Please note that during the production process errors may be discovered which could affect the content, and all legal disclaimers that apply to the journal pertain.

1 **Production and characterization of a  $\beta$ -glucosidase from**  
2 ***Issatchenkia terricola* and its use for hydrolysis of aromatic**  
3 **precursors in Cabernet Sauvignon wine.**

4  
5 **Stefani de Ovalle <sup>a</sup>, Ivana Cavello <sup>b</sup>, Beatriz M. Brena <sup>a</sup>, Sebastian**  
6 **Cavalitto <sup>b</sup>, Paula González-Pombo <sup>a\*</sup>.**

7 a- Área Bioquímica, Departamento de Biociencias, Facultad de Química, General Flores  
8 2124, CC1157 Montevideo, Uruguay.

9 b - Research and Development Center for Industrial Fermentations, CINDEFI (CONICET,  
10 La Plata, UNLP), Calle 47 y 115 (B1900ASH), La Plata, Argentina

11 \* Corresponding author. Tel.: +598 2 9241806; fax: +598 2 9241906. E-mail address:  
12 [pgonzale@fq.edu.uy](mailto:pgonzale@fq.edu.uy)

13  
14 Keywords: non-*Saccharomyces*, enzyme production, bioreactor, sensorial  
15 analysis, aroma.

16  
17 **INTRODUCTION**

18 In grapes, a major part of the aroma compounds are present as non-volatile  
19 glycosidic precursors constituting a reserve of potential active aroma molecules  
20 that can be released during the winemaking process, increasing wine  
21 complexity (Hernandez-Orte et al., 2009). The application of enzymes in  
22 oenology has increased over the past decade. Nowadays, in industrial  
23 production, the hydrolysis of aromatic precursors is often enhanced using fungal  
24 commercial enzymes preparations not adequately purified, and thus containing  
25 different glycosidase activities (Maicas & Mateo, 2005). However, such  
26 preparations are known to promote collateral reactions that damage wine  
27 quality and lead to the loss of wine typicity (Arévalo-Villena, Úbeda-Iranzo,

28 Cordero-Otero & Briones-Pérez, 2005; Fia, Olivier, Cavaglioni, Canuti, &  
29 Zanoni, 2016).

30 It is well known that in oenological ecosystems,  $\beta$ -glucosidases from non-  
31 *Saccharomyces* yeasts could impact in the development of varietal aroma and  
32 contribute to wine typicity (Palmeri & Spagna, 2007; Romo-sánchez, Arévalo-  
33 villena, Romero, & Ramirez, 2013). Thus, in search of alternatives to the use of  
34 commercial preparations, studies have been focused in the isolation and  
35 characterization of specific enzymes from non-*Saccharomyces* yeasts, isolated  
36 from the biodiversity of native wine ecosystems. Strains of *Issatchenkia*  
37 *terricola* yeast are found in soils, sea water, and spoiled fruit. They can also be  
38 part of grape native flora and often act as a spoilage yeast in fruit juices  
39 (Chavan et al., 2009). Due to its low fermentative characteristics and its  
40 capability to increase ethyl acetate concentrations, the use of *Issatchenkia*  
41 *terricola* in mixed fermentations has been discarded (Clemente-Jimenez,  
42 Mingorance-Cazorla, Martínez-Rodríguez, Las Heras-Vázquez, & Rodríguez-  
43 Vico, 2004). A previous report of an extracellular  $\beta$ -glucosidase from  
44 *Issatchenkia terricola* isolated from Tannat grapes of Uruguayan vineyards  
45 showed activity on white wine glucosides, and was tolerant to acidic pH (over  
46 3.0) and high concentrations of glucose and ethanol (González-Pombo, Fariña,  
47 Carrau, Batista-Viera, & Brena, 2011). All these properties suggest that it could  
48 be exploited to release wine aroma. However, the constitutive production of  
49 these extracellular enzymes is usually poor, which limits their applicability in  
50 biotechnological processes. Therefore, in order to carry out a successful  
51 process, the production needs to be enhanced. In the present work, the-effect of  
52 environmental and nutritional conditions for the production of the  $\beta$ -glucosidase

53 from *Issatchenkia terricola* have been studied in batch and fed batch processes,  
54 and kinetic and stoichiometric parameters were determined.

55 The purified enzyme was biochemically characterized and its specificity towards  
56 aroma precursors as well as anthocyanin glucosides from Cabernet Sauvignon  
57 wine were also studied. Cabernet Sauvignon is originated in the Bordeaux  
58 region, France, but now it is planted in vineyards all over the world. The aroma  
59 of Cabernet Sauvignon wines is usually described as fruity or floral with roasted,  
60 wood-smoke, and cooked meat nuances (Peynaud, 1980) and often as  
61 herbaceous (Ugliano & Henschke, 2009).

62

## 63 **2. MATERIALS AND METHODS**

### 64 **2.1 Chemical and reagents**

65 The enzyme substrates: *p*-nitrophenyl- $\beta$ -D-glucopyranoside, *p*-nitrophenyl- $\alpha$ -D-  
66 glucopyranoside, *p*-nitrophenyl- $\beta$ -D-galactopyranoside, *o*-nitrophenyl- $\beta$ -D-  
67 galactopyranoside, *p*-nitrophenyl- $\alpha$ -L-rhamnopyranoside, *p*-nitrophenyl- $\alpha$ -L-  
68 arabinopyranoside, D-(+) cellobiose, sucrose, maltose and  
69 carboxymethylcellulose were purchased from Sigma-Aldrich (St. Louis, MO,  
70 USA). The standards of molecular weight were purchased from General  
71 Electric (Fairfield, CT, USA). EUPERGIT C 250L was kindly donated by  
72 RohmPharma (Darmstadt, Germany). *Issatchenkia terricola* yeast was supplied  
73 by the Laboratorio de Enología (Facultad de Química, Montevideo, Uruguay).  
74 The glucose determination kit was purchased from Spinreact (Girona, Spain).  
75 Bradford's reagent was purchased from Bio-Rad laboratories (Richmond, CA,  
76 USA). Pure standards were purchased from Sigma-Aldrich Corp. (Milwaukee,  
77 WI, USA) and Fluka (Buchs, Switzerland). Solvents were of spectrophotometric

78 grade from Merck (USA). ISOLUTE ENV+ was purchased from Biotage AB  
79 (Uppsala, Sweden). All other chemicals were of analytical grade.

## 80 **2.2 Culture media**

81 A Strain of *Issatchenkia terricola*, isolated from Tannat grapes of Uruguayan  
82 vineyards, was screened at pH 4.0 for  $\beta$ -glucosidase activity, in Esculin Glycerol  
83 Agar medium as previously reported (Pérez et al., 2011). *I. terricola* was grown  
84 using eight cultures media with different carbon sources. Control medium  
85 (YPG): composed by (per liter) 25 g Yeast extract, 1 g peptone, 8 mL glycerol;  
86 wheat medium, composed by (per liter): 3 g wheat bran, 3 g yeast extract; 3 g  
87  $\text{KH}_2\text{PO}_4$ , 6 g  $\text{K}_2\text{HPO}_4$ , 0.5 g  $\text{CaCl}_2 \cdot 2\text{H}_2\text{O}$ , 0.2 g  $\text{MgSO}_4 \cdot 7\text{H}_2\text{O}$ . For the remaining  
88 six culture media, the carbon source (per liter) was: 10 g glucose as limiting  
89 substrate (synthetic medium), 10 mL commercial vegetable juice V8  
90 (Campbell's Oblimar, MI, USA), 8 mL glycerol, 10 g sugarcane molasses, 1.25  
91 g hesperidin, 1.25 g naringin, respectively. Additionally, the remaining media  
92 contained (per liter): 4 g urea, 1 g  $\text{K}_2\text{HPO}_4$ , 0.45 g sodium citrate, 0.1 g,  $\text{CaCl}_2$ ;  
93 0.6 g  $\text{MgSO}_4$  and 1 mL of vitamin solution, 1 mL trace element solution C, and 1  
94 mL of trace element solution A. All medium were adjusted to pH 5.0. The  
95 vitamin solution contained (per liter): 6 mg folic acid, 6 mg myo-inositol, 6 mg d-  
96 biotin, 0.8 g calcium pantothenate, 0.8 g *p*-aminobenzoic acid, 0.8 g riboflavin,  
97 and 1.6 g pyridoxine. Trace element solution C contained (per liter): 0.6 g citric  
98 acid, 0.15 g  $\text{CoCl}_2$ , 3 g  $\text{MnSO}_4 \cdot \text{H}_2\text{O}$ , 5 g  $\text{ZnSO}_4 \cdot 7\text{H}_2\text{O}$ , 15 g  $\text{FeSO}_4 \cdot 7\text{H}_2\text{O}$ , and  
99 0.75 g  $\text{CuSO}_4 \cdot 5\text{H}_2\text{O}$ , pH 1.5. Trace element solution A contained (per liter): 0.65  
100 g  $\text{Na}_2\text{MoO}_4 \cdot 2\text{H}_2\text{O}$ , 0.1 g KI, and 0.1 g  $\text{H}_3\text{BO}_3$ , pH 1.5.

## 101 **2.3 Culture conditions**

102 Erlenmeyer flasks filled to 10% of their nominal volume were inoculated with a  
103 72-h-old preculture grown on YPG medium and incubated in the media  
104 previously described at 28°C with shaking at 150 rpm. Liquid samples were  
105 withdrawn at regular intervals, and used for growth monitoring by measuring  
106 optical density at 600 nm and analytical determination (pH, substrate and  
107 enzyme activity).

108 Batch and fed-batch cultures were carried out in a 5-litre LH-210 Bioreactor  
109 (Inceltech, Toulouse, France) with synthetic medium, with aeration of 1 vvm  
110 (volume of air per volume of medium per minute) and stirred at 650 rpm. The  
111 culture pH was measured with a glass electrode MettlerToledo (Columbus, OH,  
112 USA). The outlet gas was analyzed with a paramagnetic O<sub>2</sub> detector (Series  
113 1100, Servomex, Crowborough, UK) and an infrared CO<sub>2</sub> detector (Pir 2000,  
114 Horiba, Japan). The O<sub>2</sub> uptake and CO<sub>2</sub> production rates were calculated  
115 according to Cooney, Wang, & Wang, 2006.

116 The fed-batch protocol was designed according to the equations derived from  
117 the mass balances for the substrate and biomass in carbon-limited cultures by  
118 means of the kinetic and stoichiometric parameters calculated in the batch  
119 cultures.

120 (Eq. 1)

121 where  $S_r$  is the concentration of limiting substrate in the feeding medium;  $X_0$ ,  $X_f$   
122 are the biomass concentration at the beginning and the end of the feeding  
123 phase (g/L), respectively;  $V_0$  and  $V_f$ , the initial and final volume (L);  $F$ , the  
124 feeding rate (L/h),  $\mu$ , the specific growth rate ( $h^{-1}$ ); and  $Y_{X/S}$ , cellular yield  
125 coefficient based on carbon source consumption (g cell/g carbon source).

## 126 **2.4 Enzyme assay**

127  $\beta$ -Glucosidase activity was determined using a chromogenic substrate: *p*-  
128 nitrophenyl- $\beta$ -D-glucopyranoside (*p*NPG). A sample volume of 0.1 mL of  
129 enzyme solution was added to 1.25 mL of 25 mmol/L *p*NPG in 0.1 mol/L  
130 sodium acetate buffer, pH 4.5 (activity buffer). The reaction mixture was  
131 incubated at  $23^{\circ} \pm 1^{\circ}\text{C}$  (room temperature). Initial velocity was determined by  
132 taking 0.5 mL aliquots of the reaction mixture at regular intervals and added to  
133 0.5 mL of carbonate buffer (0.2 mol/L; pH 10) to stop the reaction. The liberated  
134 *p*-nitrophenol (*p*NP) was measured spectrophotometrically at 405 nm in  
135 Shimadzu UV-Visible spectrophotometer, UV-1603 (Nakagyo-ku, Kyoto,  
136 Japan). The molar extinction coefficient used was  $18,300 \text{ mol/L}^{-1} \text{ cm}^{-1}$ . (Blondin,  
137 Ratomahenina, Arnaud, & Galzy, 1983; Gueguen, Chemardin, Labrot, Arnaud,  
138 & Galzy, 1997). Enzyme activity is expressed in katals.

## 139 **2.5 Enzyme characterization**

140 The following characterization studies were performed with the purified enzyme  
141 extract prepared as reported in González-Pombo et al., 2011.

### 142 **Polyacrylamide gel electrophoresis (PAGE)**

143 Sodium dodecyl sulfate (SDS)-PAGE and isoelectric focusing electrophoresis  
144 (IEF) were carried out with Phast System apparatus (Pharmacia LKB,  
145 Stockholm, Sweden) SDS-PAGE was performed with Homo 12.5 Phast Gels.  
146 The isoelectric point (*I*<sub>p</sub>) was determined using the broad *I*<sub>p</sub> calibration kit, run  
147 on PhastGel IEF 3-9 and staining with the specific fluorogenic substrate; 4-  
148 methyl-umbelliferyl- $\beta$ -D-glucopyranoside (5 mmol/L) for 10 min at  $30^{\circ}\text{C}$ . The  
149 proteins in the polyacrylamide gels were stained with Coomassie Brilliant Blue.

#### 150 **2.5.1 Determination of molecular weight**

151 Enzyme molecular weight was determined by size-exclusion chromatography in  
152 AKTA system (AKTA Purifier 10, General Electric, Fairfield, CT, USA), using a  
153 Superdex 200 10/300 GL column (GE Healthcare, Fairfield, CT, USA) in sodium  
154 phosphate buffer 50 mmol/L, pH 7.0, 0.15 mol/L NaCl at 0.25 mL per minute.  
155 The following molecular weight standards were used: Blue Dextran (MW > 2000  
156 kDa), Thyroglobulin (669 kDa), Ferritin (440 kDa), Catalase (232 kDa), Aldolase  
157 (158 kDa), Bovine Serum Albumin (67 kDa), Ovalbumin (43kDa), and  
158 Ribonuclease (13.7 kDa).

### 159 **2.5.2 Kinetic properties**

160 The kinetic parameters  $K_m$  (mmol/L),  $K_{cat}$  ( $s^{-1}$ ) and  $K_{cat}/K_m$  were determined with  
161 using the substrate *p*NPG (in the range 1-10 mmol/L) at room temperature. The  
162 rates were measured in duplicate.  $K_m$  and  $K_{cat}$  values were determined using  
163 linear regression (Lineweaver Burk plot).

### 164 **2.5.3 Effect of Metal ions and EDTA on enzyme activity**

165 The effect of different metal ions ( $Na^+$ ,  $Ca^{2+}$ ,  $Mg^{2+}$ ,  $Zn^{2+}$ ) on enzyme activity was  
166 studied. Each cation (or EDTA) at 10 mmol/L was added to 25 mmol/L of *p*NPG,  
167 prior to enzyme activity determination. Hundred per cent of activity was defined  
168 as the activity obtained in absence of metal ions and EDTA.

### 169 **2.5.4 Substrate specificity**

170  $\beta$ -Glucosidase activity was assayed against aryl-glycosides: *p*-nitrophenyl- $\beta$ -D-  
171 glucopyranoside, *p*-nitrophenyl- $\alpha$ -D-glucopyranoside, *p*-nitrophenyl- $\beta$ -D-  
172 galactopyranoside, *o*-nitrophenyl- $\beta$ -D-galactopyranoside, *p*-nitrophenyl- $\alpha$ -L-  
173 rhamnopyranoside and *p*-nitrophenyl- $\alpha$ -L-arabinopyranoside. The activity  
174 towards aryl-glycosides was measured by the method previously described for  
175 *p*NPG. For disaccharides (D-(+) cellobiose, sucrose, maltose) and the



176 polysaccharide carboxymethylcellulose, the activity was determined by  
177 assaying the amount of glucose released by the glucose oxidase method  
178 (Trinder & Infirmary, 1969) using the glucose oxidase/peroxidase enzymatic  
179 assay kit.

## 180 **2.6 Treatment of Cabernet Sauvignon young red wine**

### 181 **2.6.1 Enzymatic treatment of wine**

182 The  $\beta$ -glucosidase of *I. terricola* was previously immobilized onto Eupergit C  
183 250L according to González-Pombo et al., 2011. Immobilized enzyme (20 nkat)  
184 was incubated with a Cabernet Sauvignon red wine (500 mL adjusted to pH 4.0  
185 with 2 mol/L NaOH) at room temperature with stirring (Treated wine). A control  
186 experiment without enzyme was performed by incubating the matrix (Eupergit C  
187 250 L with the epoxy-groups previously blocked with 3 mol/L glycine), in the  
188 same conditions (control wine).

### 189 **2.6.2 Glycosyl–Glucose (G–G) assay**

190 The G-G assay was used to determine the total concentration of glycosides in  
191 wine samples in order to follow the time course of the enzymatic treatment. The  
192 total concentration of glycosides in Cabernet Sauvignon wine samples was  
193 determined using a C18 reverse phase column (Iland, Cynkar, Francis,  
194 Williams, & Coombe, 1995). In the first step, C18 reverse phase was activated  
195 with 10 mL of methanol followed by 10 mL distilled water. A volume of 10 mL of  
196 wine was loaded on the column and washed with 50 mL distilled water.  
197 Glycosides were eluted with 1.5 mL ethanol followed with distilled water to a  
198 final volume of 5 mL. In the second step, glycosides were hydrolyzed in acidic  
199 conditions according to the method of Iland et al., 1995. Then, samples were

200 neutralized using 1 mol/L of buffer Tris-HCl, pH 7.6 and 2 mol/L of NaOH  
201 solution. In the final step, the concentration of the released D-glucose was  
202 determined by spectrophotometric method using a glucose oxidase/peroxidase  
203 enzymatic assay kit. For each independent experiment, G–G analysis was  
204 performed in triplicate.

205

### 206 **2.6.3 Isolation of volatiles**

207 Volatiles were adsorbed on Isolute ENV+ cartridge packed with 1 g of highly  
208 cross-linked styrene-divinylbenzene (SDVB) polymer (40–140 µm, cod. no. 915-  
209 0100-C) as previously reported Boido et al., 2003. The cartridges were  
210 equilibrated sequentially with methanol (15 mL) and distilled water (20 mL). A  
211 sample of wine (50 mL diluted with 50 mL of distilled water) containing internal  
212 standard (0.1 mL of a 230 mg/L of 1-heptanol hydroalcoholic solution) was  
213 applied at 4–5 mL/min and the residue was washed with 15 mL of distilled  
214 water. The volatile fractions were eluted with 30 mL of dichloromethane; the  
215 solution was dried with Na<sub>2</sub>SO<sub>4</sub> and concentrated to 1.5 mL on a Vigreux  
216 column. Samples were stored at –10° C, and further concentrated to 100 µL  
217 under nitrogen just immediately prior to GC–MS analysis.

### 218 **2.6.4 Identification and quantification of aroma compounds**

219 Extracts were analyzed by GC–MS using a Shimadzu QP 5050 mass  
220 spectrometer with reference libraries (Adams, 2001; McLafferty & Stauffer,  
221 1991; Marais, Versini, van Wyk, & Rapp, 1992; Strauss, Gooley, Wilson, &  
222 Williams, 1987; Strauss, Wilson, & Williams, 1987) using a BP 20 (SGE,  
223 Ringwood, Australia) bonded fused silica capillary column (25m×0.25mm i.d.),  
224 coated with polyethylene glycol (0.25µm phase thickness) (Fariña, Boido,

225 Carrau, Versini, & Dellacassa, 2005). The identification of compounds was  
226 confirmed by injection of pure standards and comparing their retention index  
227 and relevant MS-spectra. Volatile compounds were quantified by GC, using 1-  
228 heptanol as the internal standard. In cases where pure reference compounds  
229 were not used, the identification was indicated as tentative and the  
230 quantification was performed using the characteristic fragments (Loscos,  
231 Hernandez-Orte, Cacho, & Ferreira, 2007).

232

### 233 **2.6.5 Wine sensory analysis**

234 The panel that carried out the sensory evaluation was composed of 14 subjects  
235 (5 women and 9 men) belonging to the staff of Enology lab of the Food  
236 Department of Faculty of Chemistry (UdelaR) and expert sommeliers. All of  
237 them participate regularly in sensory tests. Samples (30 mL, 18°C) were  
238 presented in a random order in coded tulip-shaped wine glasses covered with a  
239 Petri dish in individual testing booths. In the extended triangle test, one cup of  
240 enzymatic treated wine was confronted to two cups of the control wine  
241 (untreated wine). The panelists were instructed to smell the samples from left to  
242 right and to identify the different sample. When a significant difference was  
243 detected, the judges were asked to freely note the descriptors.

244

### 245 **2.6.6 Analysis of wine color**

246 Concentration of free anthocyanin was estimated by the method of sulfur  
247 dioxide (Ribéreau-Gayon, & Stonestreet, 1965). Aliquots of 1 mL of young wine  
248 and 1 mL of ethanol (containing 1 mL/L v/v of HCl) were mixed and added to 20  
249 mL of 20 mL/L v/v, HCl. An aliquot of 10 mL of that mixture was taken and 4 mL

250 of 15 g/L of potassium bisulfite was added. For blank, the latter was replaced by  
251 distilled water. Absorbances at 520 nm was determined after incubated samples  
252 for 5 minutes, at 23°C.

### 253 **3. RESULTS AND DISCUSSION**

#### 254 **3.1 Optimization of culture conditions**

255 In order to optimize the production of the extracellular  $\beta$ -glucosidase, different  
256 culture media, and the influence of the initial pH and incubation temperature  
257 were studied. In all the media tested, optical density increased concomitantly  
258 with  $\beta$ -glucosidase production reaching its maximum in the exponential phase  
259 (data not shown). So,  $\beta$ -glucosidase production is associated with yeast  
260 growth. As shown in Fig. 1, the culture medium had a profound effect on the  
261 amount of enzyme activity produced. For most media (wheat, cane molasse,  
262 vegetable juice and glycerol) the yeast growth was low and as consequence the  
263 enzyme production was very poor. It is well known that the presence of  
264 substrates in culture media could contribute to enzyme production (Lee,  
265 Prometto, Demirci, & Hinz, 1998), however, the natural flavonoids tested  
266 (naringin and hesperidin) did not increase the enzyme production (Fig. 1). A  
267 similar result was obtained in presence of 5 g/L of the D-(+)-cellobiose  
268 (González-Pombo et al., 2011). For the synthetic medium the production of  $\beta$ -  
269 glucosidase was increased two fold with respect to the YPG and 3 to 8-fold with  
270 respect to the other media assayed. The synthetic medium differs from the  
271 other media tested, mainly in the carbon source composition. The fact that it is  
272 the only medium containing glucose, suggests that it acts not only as a carbon  
273 source but also as a stimulator of  $\beta$ -glucosidase production. This result is  
274 remarkable since most  $\beta$ -glucosidases are inhibited by the presence of glucose

275 and means that this glucose-tolerant enzyme could be used in some glucose-  
276 rich products such as fruit juices (Sarry, & Günata; 2004). Noteworthy, in  
277 synthetic medium, maximum production was attained one day before than in the  
278 control (YPG medium) and the others culture media assayed.

## 279 **FIG. 1**

280 The productivity of the enzyme was increased by rising the culture temperature  
281 from room temperature to 28°C in synthetic medium. With respect to the  
282 influence of pH (pH 4 to 6), the use of an initial pH of 5 or 6 almost doubled the  
283 enzyme production with respect to pH 4, increasing it from 130 pkat to 250 pkat  
284 (Supplementary Material 1). Thus, the optimized culture conditions for synthetic  
285 medium were: initial pH of 5.0, 28°C and 96 h.

286

## 287 **3.2 Scaling up of $\beta$ -glucosidase production**

### 288 **3.2.1 Batch cultures at bioreactor scale**

289 For synthetic medium, the time-course of cell growth and substrate  
290 consumption (Fig. 2) as well as the rates of oxygen consumption and carbon  
291 dioxide production (Fig. 3) were studied in batch culture. The respiratory  
292 quotient was always near 1, typical of a full respiratory metabolism. The  
293 stoichiometric and kinetic parameters of the culture are reported in Table 1. The  
294 carbon and energy balances were calculated according to Erickson, Minkevich,  
295 & Eroshin, 2000. A respiratory quotient close to unity indicates that only  
296 biomass and CO<sub>2</sub> are produced during cultivation under these conditions.  
297 Although the  $\beta$ -glucosidase is an extracellular enzyme, the amount of the  
298 produced protein is low enough compared to biomass, to impact on the carbon  
299 balance.

300 **FIG. 2**

301 **FIG. 3**

302 **TABLE 1**

303

### 304 **3.3.2 Fed-batch cultures in bioreactor**

305 Fed-batch is known to be the optimal cultivation process to produce cell-growth  
306 associated products due to its high volumetric productivity, as well as high final  
307 product concentration, stability and reproducibility of the process (Dodge, 2009).  
308 Considering that most protein production processes are based on fed-batch  
309 protocols, and in an attempt to increase  $\beta$ -glucosidase productivity, a fed-batch  
310 fermentation experiment using synthetic medium was performed. Indeed, this  
311 process allows controlling the rate of glucose feeding so as to avoid  
312 accumulation of the carbon and energy source, and a consequent non-restrict  
313 growth profile. The fundamental fermentation parameters were previously  
314 estimated from the batch-culture data (Table 1). For a desired final biomass  
315 concentration of 30 g/L, according to Eq 1 and based on the physiological  
316 values in Table 1 ( $Y_{x/s} = 0.488 \text{ g}_X/\text{g}_S$  and a  $\mu_{\max} = 0.144 \text{ h}^{-1}$ ), the corresponding  
317 parameters were:  $X_0=6 \text{ g/L}$ ,  $V_0=3.0 \text{ L}$  and  $V_f=4.0 \text{ L}$ ,  $S_F=200 \text{ g/L}$ ,  $F=50 \text{ mL/h}$ ,  
318 where  $X_0$  and  $V_0$  are biomass concentration and volume at initial condition  
319 respectively,  $V_f$  is final volume,  $S_F$  is substrate feeding concentration,  $F$  is  
320 feeding flux. To our knowledge, this is the first report of kinetic and  
321 stoichiometric studies of this yeast.

322 Although fed-batch system is usually the most suitable to enzyme production in  
323 submerged culture, in the case of  $\beta$ -glucosidase, the final enzyme activity was  
324 practically the same as in batch culture. This behavior could be due to the fact

325 that some enzymes are synthesized in greater quantity when the microorganism  
326 grows at high rate. This is called growth-associated enzyme production. For the  
327 production of these enzymes, batch culture is the best selection because it is  
328 easier and faster than fed-batch. Thus, in batch culture, the volumetric  
329 productivity (in katal $\text{s mL}^{-1} \text{ h}^{-1}$ ) resulted higher than the fed batch (Dodge,  
330 2009).

331

### 332 **3.4 Enzyme characterization**

#### 333 **3.4.1 Biochemical properties**

334 The precipitation with ammonium sulfate allowed a one-step preparation of a  
335 purified extract of the enzyme as reported in González-Pombo et al.,  
336 2011. The SDS-PAGE (Fig. 4 lane 1), shows the presence of a single band at  
337 49 kDa confirming the purity of the enzyme preparation used. Size-exclusion  
338 chromatography revealed that the molecular weight of native  $\beta$ -glucosidase was  
339 of about 48 kDa, suggesting that the enzyme is monomeric. Specific staining of  
340 isoelectric focusing gels with the fluorogenic substrate 4-methyl- $\beta$ -umbelliferyl- $\beta$ -  
341 D-glucoside (MUG) reveals that the isoelectric point of the enzyme is 3.5. Both  
342 results are similar to those of the majority of the  $\beta$ -glucosidases described  
343 previously, as those enzymes are acidic and commonly have monomers no  
344 bigger than 65 kDa (Esen, 1993).

345 The Michaelis-Menten constant ( $K_m$ ) using *p*-nitrophenyl- $\beta$ -D-glucopyranoside  
346 (*p*NPG) was 4.35 mmol/L. This  $K_m$  value is higher than those of other  $\beta$ -  
347 glucosidases from non-*Saccharomyces* yeasts. The  $K_{cat}$  value was 460  $\text{s}^{-1}$ .  $K_{cat}/$   
348  $K_m$  is  $1.1 \times 10^5 \text{ s}^{-1} (\text{mol/L})^{-1}$ .

349 Fig. 4

### 350 **3.4.2 Effect of metal ions and EDTA on activity**

351 As shown in Table 2, 10 mmol/L of K<sup>+</sup> practically did not affect enzyme activity,  
352 however, K<sub>2</sub>SO<sub>4</sub> showed a stimulating effect (30% increased) suggesting that  
353 K<sup>+</sup> could have a stimulatory effect, depending on its concentration. The  
354 stimulatory effect of K<sup>+</sup> in the activity of β-glucosidases has been previously  
355 reported (Souza et al., 2010). The presence of 10 mmol/L of Ca<sup>2+</sup>, Mg<sup>2+</sup> and  
356 Na<sup>+</sup> cations did not influence the enzyme activity. These results are similar to  
357 other β-glucosidases (Chen, Hayn, & Esterbauer, 1992) but different to those  
358 observed for β-glucosidase from *Issatchenkia orientalis*, in which Ca<sup>2+</sup> and Mg<sup>2+</sup>  
359 ions increased enzyme activity (de Ovalle, Brena, Fariña, & González-Pombo,  
360 2016). Similarly to other β-glucosidases, the presence of Co<sup>2+</sup> decreased the  
361 activity by approximately 30 % (Baffi et al., 2013). An analogous behavior to the  
362 Co<sup>2+</sup>, was observed in the presence of Mn<sup>2+</sup>. Like other non-Saccharomyces β-  
363 glucosidases, the chelating agent EDTA practically did not affect enzyme  
364 activity, indicating that divalent cations are not required for enzyme activity  
365 (Chen, Li, & Zong, 2012; González-Pombo et al., 2008; de Ovalle et al., 2016).

### 366 **Table 2**

367

### 368 **3.4.3 Substrate specificity**

369 Concerning specificity for synthetic substrates, the enzyme was much more  
370 active on *p*-nitrophenyl-β-D-glucopyranoside than on other nitrophenyl-  
371 glucosides of α and β configurations (Table 3). So, both the sugar moiety and  
372 the type of glycosidic linkage are essential to substrate recognition. The enzyme  
373 strongly preferred glucose over other monosaccharides, and there was also  
374 striking specificity difference between *p*-nitrophenyl-β-D-glucopyranoside over  
375 the corresponding an isomer (*p*-nitrophenyl-α-D-glucopyranoside). This



376 suggests that this enzyme is much more specific for  $\beta$  (1 $\rightarrow$ 4) bonds, as  
377 compared to  $\alpha$  (1 $\rightarrow$ 4) linkages. Accordingly, the enzyme was quite active on the  
378 disaccharide cellobiose containing  $\beta$  (1 $\rightarrow$ 4) linkages and only slightly active on  
379 maltose with  $\alpha$  (1 $\rightarrow$ 4) glucosidic linkages. However, it was active on sucrose  
380 containing  $\alpha$  (1 $\rightarrow$ 2) linkages and it did not hydrolyze the polysaccharide  
381 carboxymethylcellulose, with  $\beta$  (1 $\rightarrow$ 4) glucosidic bonds. Clearly, the  $\beta$ -  
382 glucosidase from *I. terricola* showed to be more selective than the one from *I.*  
383 *orientalis*, which showed a broad range of activity against different substrates  
384 (de Ovalle et al., 2016).

### 385 **Table 3**

#### 386 **3.5 Hydrolysis of aromatic precursors in Cabernet Sauvignon young wine.**

387 The activity of  $\beta$ -glucosidase on the aromatic precursors was tested by the  
388 incubation of immobilized biocatalyst with a Cabernet Sauvignon wine. The  
389 activity of the  $\beta$ -glucosidase on red wine aroma precursor was tested during 19  
390 days using the enzyme immobilized on Eupergit C 250L. The enzyme-treated  
391 wine showed a significant effect with respect to the control, decreasing 40% the  
392 amount of wine glycosides, from a G-G value of 500  $\mu\text{mol/L}$  to 290  $\mu\text{mol/L}$ .

393 After the enzyme treatment of the wine, the concentration of acids, esters and  
394 alcohols remained unchanged (Table 4). The enzyme treatment had a  
395 significant effect on the release of different aglycones and resulted in increased  
396 phenols and norisoprenoids with respect to control wine (Table 4). The volatile  
397 phenols and norisoprenoids increased significantly. Phenols  
398 increased (83%), from 607  $\mu\text{g/L}$  to 1113  $\mu\text{g/L}$  and norisoprenoids increased  
399 65%, from 17  $\mu\text{g/L}$  to 28  $\mu\text{g/L}$  with respect to control wine. Concerning phenols,  
400 guaiacol is an established indicator of the smoke taint and at low levels it could  
401

402 add complexity to wine flavor, however at higher concentration it may cause  
403 undesirable aromas (Kennison, Wilkinson, Pollnitz, Williams, & Gibberd, 2009;  
404 Parker et al., 2012; Ristic et al., 2011). As a result of the enzymatic treatment  
405 although an increase of its concentration around its threshold was observed  
406 (Table 4), its presence was not detected by the judges in the sensorial extended  
407 triangle test.

408 As for norisoprenoids and other carotenoid-derived aroma compounds they are  
409 recognized as aroma contributors in both, red and white wines and in grape  
410 juices, including the Chardonnay, Chenin blanc, Semillon, Sauvignon blanc,  
411 Riesling, Cabernet Sauvignon, and Shiraz varieties (Winterhalter & Rouseff,  
412 2002). After enzymatic treatment of wine, the norisoprenoids, such as vomifoliol  
413 and 3-oxo-alpha ionol presented significant differences with respect to the  
414 control. Even though the threshold of these compounds has not been reported,  
415 they are known to be very low, and norisoprenoids have been characterized as  
416 enhancers of fruity, dried raisin or red plum notes (Escudero, Campo, Fariña,  
417 Cacho & Ferreira, 2007; Wang, Kang, Xu, & Li, 2011). Consistently, the judges  
418 of the triangle test, detected raisin and dried fruits notes in the treated wine.

419 The concentration of C6 compounds particularly (Z)-3-hexen-1-ol, was  
420 increased significantly by 30% (from 68 to 89 ug/L) with respect to control.  
421 Some authors describe C6 compounds as contributors of vegetative and green  
422 flavor attributes (Escudero et al., 2007). However, the contribution of C6-derived  
423 compounds with green attributes in wines is poorly understood (Bindon et al.,  
424 2014). Anyway, as odor threshold of (Z)-3-hexen-1-ol (400 ug/L) was not  
425 reached after the enzyme treatment, its contribution to wine aroma is expected

426 to be insignificant (Fariña et al., 2015). Accordingly, herbaceous aromas were  
427 not detected in the sensorial test in any of the wines.

428 For the extended triangle test, in a total of 28 trials, 21 found differences in the  
429 treated wine with respect to the control (level of significance < 0.001). The panel  
430 of judges considered that the control wine was sweet and fruity whereas the  
431 treated one had notes of dried fruits and raisins. As previously mentioned, the  
432 latter notes are in agreement with the increase in the concentration of  
433 norisoprenoids. This increase occurs slowly during the aging of wine (Loscos,  
434 Hernández-Orte, Cacho, & Ferreira, 2010), in a process that takes until 6  
435 months in barrel (Oberholster et al., 2015). Noteworthy, these  
436 notes were achieved in a very short time (19 days), using  $\beta$ -glucosidase from *I.*  
437 *terricola*

438  
439 Table 4.

440  
441 Besides aroma profiles, color in red wines is one of the main attributes and  
442 anthocyanins are the major pigment compounds (Corduas, Cinquanta, & levoli,  
443 2013). Since the main anthocyanins are mono-glucosides, attention has been  
444 focused in the role of  $\beta$ -glucosidases in the decrease of red wine color  
445 (Barbagallo, Palmeri, Fabiano, Rapisarda, & Spagna, 2007). *I. terricola*  $\beta$ -  
446 glucosidase had no activity onto anthocyanin glucosides since the concentration  
447 of anthocyanin after the enzymatic treat-wine remained unchanged ( $210 \pm 22$   
448 mg/L). The high selectivity shown by this enzyme represents an advantage for  
449 its application since it could be used to develop aroma without compromised  
450 wine color.

451 **4. CONCLUSIONS**

452

453 The current work contributes to the investigation of the role and the assessment  
454 of the potential applications of native  $\beta$ -glucosidases to release aromatic  
455 compounds in wines. The analysis of the released aglycones after the  
456 enzymatic hydrolysis, revealed significant increases in the concentration of  
457 several volatile compounds.  $\beta$ -Glucosidase showed high ability to liberate  
458 norisoprenoids and phenols from their precursors, resulting in a wine with dried  
459 fruits and raisins notes without compromised red wine color. These results  
460 reinforce those previously obtained in Muscat wine (González-Pombo et al.,  
461 2011) and suggest that *Issatchenkia terricola*  $\beta$ -glucosidase, may be an  
462 approach to develop aroma in both white and red wines in very short times. For  
463 industrial application, even though there was an increase in enzyme production  
464 using optimal cultivation conditions, there is still the need to improve enzyme  
465 yield by means of for example recombinant DNA-technology using heterologous  
466 expression in *Saccharomyces cerevisiae*. The strain of *Issatchenkia terricola*  
467 yeast was not patented and its genome has not been sequenced yet.

468

## 469 **5. ACKNOWLEDGEMENTS**

470 Authors acknowledge the support from Comisión Sectorial de Investigación  
471 Científica (CSIC), Program for the Development of Basic Sciences,  
472 (PEDECIBA-Química) and Agencia Nacional de Investigación e Innovación  
473 (ANII) POS\_NAC\_2014\_1\_102369. Authors are very grateful to Laboratorio de  
474 Enología, Facultad de Química, UdelaR for supplied the yeast and to Laura  
475 Fariña for GC-MS analysis.

476

## 477 **6. REFERENCES**

- 478 Adams, R. P. (2001). Identification of essential oil components by gas chromatography/  
479 quadrupole mass spectroscopy. (2nd ed.). Stockton: Allured-Carol Steam IL, (469 pp).
- 480 Arévalo -Villena, M., Úbeda- Iranzo, J. F., Cordero- Otero, R. R., & Briones- Pérez, A. I. (2005).  
481 Optimization of a rapid method for studying the cellular location of  $\beta$ -glucosidase activity  
482 in wine yeasts. *Journal of Applied Microbiology*, *99*, 558–564.
- 483 Baffi, M. A., Martin, N., Tobal, T. M., Ferrarezi, A. L., Lago, J. H. G., Boscolo, M., ... Da-Silva, R.  
484 (2013). Purification and characterization of an ethanol-tolerant  $\beta$ -glucosidase from  
485 *Sporidiobolus pararoseus* and its potential for hydrolysis of wine aroma precursors.  
486 *Applied Biochemistry and Biotechnology*, *171*, 1681–1691.
- 487 Barbagallo, R. N., Palmeri, R., Fabiano, S., Rapisarda, P., & Spagna, G. (2007). Characteristic of  
488  $\beta$ -glucosidase from Sicilian blood oranges in relation to anthocyanin degradation. *Enzyme  
489 and Microbial Technology*, *41*, 570–575.
- 490 Bindon, K., Holt, H., Williamson, P. O., Varela, C., Herderich, M., Francis, I. L. (2014).  
491 Relationships between harvest time and wine composition in *Vitis vinifera* L. cv .  
492 Cabernet consumer preference. *Food Chemistry*, *154*, 90–101
- 493 Blondin, B., Ratomahenina, R., Arnaud, A., & Galzy, P. (1983). Purification and properties of  
494 the  $\beta$ -glucosidase of a yeast capable of fermenting cellobiose to ethanol: *Dekkera  
495 intermedia* Van der walt. *European Journal of Applied Microbiology and Biotechnology*,  
496 *17*, 1–6.
- 497 Boido, E., Lloret, A., Medina, K., Fariña, L., Carrau, F., Versini, G., & Dellacassa, E. (2003). Aroma  
498 composition of *Vitis vinifera* cv. Tannat: The typical red wine from Uruguay. *Journal of  
499 Agricultural and Food Chemistry*, *51*, 5408–5413.
- 500 Chavan, P., Mane, S., Kulkarni, G., Shaikh, S., Ghormade, V., Nerkar, D. P., ... Deshpande, M. V.  
501 (2009). Natural yeast flora of different varieties of grapes used for wine making in India.  
502 *Food Microbiology*, *26*, 801–808.
- 503 Chen, H., Hayn, M., & Esterbauer, H. (1992). Purification and characterization of two  
504 extracellular  $\beta$ -glucosidases from *Trichoderma reesei*. *Biochimica et Biophysica Acta*,  
505 *1121*, 54–60.
- 506 Chen, L., Li, N., & Zong, M. H. (2012). A glucose-tolerant  $\beta$ -glucosidase from *Prunus domestica*  
507 seeds: Purification and characterization. *Process Biochemistry*, *47*, 127–132.

- 508 Clemente-Jimenez, J. M., Mingorance-Cazorla, L., Martínez-Rodríguez, S., Las Heras-Vázquez, F.  
509 J., & Rodríguez-Vico, F. (2004). Molecular characterization and oenological properties of  
510 wine yeasts isolated during spontaneous fermentation of six varieties of grape must.  
511 *Food Microbiology*, *21*, 149–155.
- 512 Cooney, C.L., Wang, H.Y., Wang, D.I.C. (2006). Computer-Aided Material Balancing for  
513 Prediction of Fermentation Parameters. *Biotechnology and Bioengineering*, *95*, 327–332.
- 514 Corduas, M., Cinquanta, L., & Ievoli, C. (2013). The importance of wine attributes for purchase  
515 decisions: A study of Italian consumers' perception. *Food Quality and Preference*, *28*,  
516 407–418.
- 517 de Ovalle, S., Brena, B., Fariña, L., & González-Pombo, P. (2016). Novel  $\beta$ -glucosidase from  
518 *Issatchenkia orientalis*: Characterization and assessment for hydrolysis of muscat wine  
519 glycosides. *Global Journal of Biochemistry and Biotechnology*, *4*, 174–183.
- 520  
521 Dodge, T. (2009). Enzymes in Food Technology. In R. J. Whitehurst, & M. van Oort (  
522 Eds.), *Production of Industrial Enzymes* (pp. 44–56). Oxford: Wiley-Blackwell  
523
- 524 Erickson, L.E., Minkevich, I.G., & Eroshin, V.K. (2000). Application of Mass and Energy Balance  
525 Regularities in Fermentation. *Biotechnology and Bioengineering*, *20*, 1595–1621.
- 526 Escudero, A., Campo, E., Fariña, L., Cacho, J., & Ferreira, V. (2007). Analytical Characterization  
527 of the Aroma of Five Premium Red Wines . Insights into the Role of Odor Families and the  
528 Concept of Fruitiness of Wines. *Journal of Agricultural and Food Chemistry*, *55*, 4501–  
529 4510.
- 530 Esen, A., (1993).  $\beta$ -Glucosidasas- Biochemistry and Molecular Biology. (1st ed.). Washington  
531 DC: American Chemical Society, (267 pp).
- 532 Fariña, L., Boido, E., Carrau, F., Versini, G., & Dellacassa, E. (2005). Terpene Compounds as  
533 Possible Precursors of 1 , 8-Cineole in Red Grapes and Wines. *Journal of Agricultural and*  
534 *Food Chemistry*, *53*, 1633–1636.
- 535 Fariña, L., Villar, V., Ares, G., Carrau, F., Dellacassa, E., & Boido, E. (2015). Volatile composition  
536 and aroma profile of Uruguayan Tannat wines. *Food Research International*, *69*, 244–255.
- 537 Fia, G., Olivier, V., Cavaglioni, A., Canuti, V., & Zanoni, B. (2016). Side activities of commercial

- 538 enzyme preparations and their influence on the hydroxycinnamic acids, volatile  
539 compounds and nitrogenous components of white wine. *Australian Journal of Grape and*  
540 *Wine Research*, 22, 366–375.
- 541 González-Pombo, P., Fariña, L., Carrau, F., Batista-Viera, F., & Brena, B. M. (2011). A novel  
542 extracellular  $\beta$ -glucosidase from *Issatchenkia terricola*: Isolation, immobilization and  
543 application for aroma enhancement of white Muscat wine. *Process Biochemistry*, 46,  
544 385–389.
- 545 González-Pombo, P., Pérez, G., Carrau, F., Guisán, J. M., Batista-Viera, F., & Brena, B. M. (2008).  
546 One-step purification and characterization of an intracellular  $\beta$ -glucosidase from  
547 *Metschnikowia pulcherrima*. *Biotechnology Letters*, 30, 1469–1475.
- 548 Gueguen, Y., Chemardin, P., Labrot, P., Arnaud, A., & Galzy, P. (1997). Purification and  
549 characterization of an intracellular  $\beta$ -glucosidase from a new strain of *Leuconostoc*  
550 *mesenteroides* isolated from cassava. *Journal of Applied Microbiology*, 82, 469–476.
- 551 Hernandez-Orte, P., Cersosimo, M., Loscos, N., Cacho, J., Garcia-Moruno, E., & Ferreira, V.  
552 (2009). Aroma development from non-floral grape precursors by wine lactic acid bacteria.  
553 *Food Research International*, 42, 773–781.
- 554 Iland, P. G., Cynkar, W., Francis, I. L., Williams, P. J., & Coombe, B. C. G. (1995). Optimisation of  
555 methods for the determination of total and red-free glycosyl glucose in black grape  
556 berries of *Vitis vinifera*. *Australian Journal of Grape and Wine Research*, 2, 171–178.
- 557 Kennison, K. R., Wilkinson, K. L., Pollnitz, A. P., Williams, H. G., & Gibberd, M. R. (2009). Effect  
558 of timing and duration of grapevine exposure to smoke on the composition and sensory  
559 properties of wine. *Australian Journal of Grape and Wine Research*, 15, 228–237.
- 560 Lee, B., Prometto, A. L., Demirci, A., & Hinz, P. N. (1998). Media Evaluation for the Production  
561 of Microbial Enzymes. *Journal of Agricultural and Food Chemistry*, 46, 4775–4778.
- 562 Loscos, N., Hernández-Orte, P., Cacho, J., & Ferreira, V. (2010). Evolution of the aroma  
563 composition of wines supplemented with grape flavour precursors from different  
564 varieties during accelerated wine ageing. *Food Chemistry*, 120, 205–216.
- 565 Loscos, N., Hernandez-Orte, P., Cacho, J., & Ferreira, V. (2007). Release and formation of  
566 varietal aroma compounds during alcoholic fermentation from nonfloral grape odorless  
567 flavor precursors fractions. *Journal of Agricultural and Food Chemistry*, 55, 6674–6684.

- 568 Maicas, S., & Mateo, J. J. (2005). Hydrolysis of terpenyl glycosides in grape juice and other fruit  
569 juices: A review. *Applied Microbiology and Biotechnology*, *67*, 322–335.
- 570 Marais, J., Versini, G., Van Wyk, C. J., & Rapp, A. (1992). Effect of region on free and bound  
571 monoterpene and C<sub>13</sub>-norisoprenoid concentrations in Weisser Riesling wines. *South  
572 African Journal for Enology and Viticulture*, *13*, 71–77.
- 573 McLafferty, F. W., & Stauffer, D. B. (1991). *The Wiley/NBS Registry of Mass Spectral Data*. (5th  
574 ed.). New York: Wiley and Sons, (7872 pp).
- 575 Oberholster, A., Elmendorf, B. L., Lerno, L. A., King, E. S., Heymann, H., Brenneman, C. E., &  
576 Boulton, R. B. (2015). Barrel maturation, oak alternatives and micro-oxygenation:  
577 Influence on red wine aging and quality. *Food Chemistry*, *173*, 1250–1258.
- 578 Palmeri, R., & Spagna, G. (2007).  $\beta$ -Glucosidase in cellular and acellular form for winemaking  
579 application. *Enzyme and Microbial Technology*, *40*, 382–389.
- 580 Parker, M., Osidacz, P., Baldock, G. A., Hayasaka, Y., Black, C. A., Pardon, K. H., ... Francis, I. L.  
581 (2012). Contribution of several volatile phenols and their glycoconjugates to smoke-  
582 related sensory properties of red wine. *Journal of Agricultural and Food Chemistry*, *60*,  
583 2629–2637.
- 584 Pérez, G., Fariña, L., Barquet, M., Boido, E., Gaggero, C., Dellacassa, E., & Carrau, F. (2011). A  
585 quick screening method to identify  $\beta$ -glucosidase activity in native wine yeast strains:  
586 Application of Esculin Glycerol Agar (EGA) medium. *World Journal of Microbiology and  
587 Biotechnology*, *27*, 47–55.
- 588 Peynaud, E. (1980). *Le Gout Du Vin - Le Grand Livre De La Degustation*. Paris:Dunod, (237pp).
- 589 Ribéreau-Gayon, P., & Stonestreet, E. (1965). Determination of Anthocyanins in Red Wine.  
590 *Bulletin de la Societe Chimique de France*, *9*, 2649-2652.
- 591 Ristic, R., Osidacz, P., Pinchbeck, K. A., Hayasaka, Y., Fudge, A. L., & Wilkinson, K. L. (2011). The  
592 effect of winemaking techniques on the intensity of smoke taint in wine. *Australian  
593 Journal of Grape and Wine Research*, *17*, 29–40.
- 594 Romo-Sánchez, S., Arévalo-villena, M., Romero, E. G., & Ramirez, H. L. (2013). Immobilization  
595 of  $\beta$  -Glucosidase and Its Application for Enhancement of Aroma Precursors in Muscat  
596 Wine. *Food and Bioprocess Technology*. doi.org/10.1007/s11947-013-1161-1



- 597 Sarry, J., & Günata, Z. (2004). Plant and microbial glycoside hydrolases: Volatile release from  
598 glycosidic aroma precursors. *Food Chemistry*, *87*, 509–521.
- 599 Souza, M., Vanderlei, C., Prazeres, R., Furriel, M., Masui, D. C., & Leone, F. A. (2010).  
600 Purification and biochemical characterization of a mycelial glucose- and xylose-stimulated  
601  $\beta$ -glucosidase from the thermophilic fungus *Humicola insolens*. *Process Biochemistry*, *45*,  
602 272–278.
- 603 Strauss, C. R., Gooley, P. R., Wilson, B., & Williams, P. J. (1987). Application of Droplet  
604 Countercurrent Chromatography to the Analysis of Conjugated Forms of Terpenoids,  
605 Phenols, and Other Constituents of Grape Juice. *Journal of Agricultural and Food*  
606 *Chemistry*, *35*, 519–524.
- 607 Strauss, C. R., Wilson, B., & Williams, P. J. (1987). 3-Oxo- $\alpha$ -Ionol, Vomifoliol and Roseoxide in  
608 *Vitis Vinifera* Fruit. *Phytochemistry*, *26*, 1995–1997.
- 609 Trinder, P., & Infirmay, R. (1969). Determination of blood glucose using an oxidase-  
610 peroxidase system with a non-carcinogenic chromogen. *Journal of Clinical Pathology*, *22*,  
611 158–161.
- 612 Ugliano, M., & Henschke, P. A. (2009). Wine Chemistry and Biochemistry. In M. V. Moreno-  
613 Arribas, & C. Polo (Eds.), *Yeasts and Wine Flavour* (pp. 314–374). Glen Osmond: Springer.
- 614 Wang, Y., Kang, W., Xu, Y., & Li, J. (2011). Effect of Different Indigenous Yeast  $\beta$ -Glucosidases  
615 on the Liberation of Bound Aroma Compounds. *Journal of the Institute of Brewing*, *117*,  
616 230–237.
- 617 Winterhalter, P., & Rouseff, R. L. (2001). Carotenoid-Derived Aroma Compounds. In P.  
618 Winterhalter, & R. L. Rouseff (Eds.), *Carotenoid-Derived Aroma Compounds: An*  
619 *introduction* (pp. 1–17). Washington DC: American Chemical Society.
- 620
- 621

**TABLES**

**Table 1.** Stoichiometric and kinetic parameters of the *I. terricola* culture using synthetic medium.  $Y_{x/s}$  and  $Y_{CO_2/s}$  represent, cellular and  $CO_2$  yield coefficient based on carbon source consumption, respectively;  $b$  is the moles of  $O_2$  consumed related with substrate consumption; Carbon balance and Reduction degree balance represent the way that carbon and energy of the substrate are distributed in the products of the growth reaction;  $\mu$  is the specific growth rate (in  $h^{-1}$ ).

$Y_{x/s}$	$Y_{CO_2/s}$	$b$	Carbon balance	Reduction degree balance	$\mu$ ( $h^{-1}$ )
0.488	0.567	0.511	1.055	1.023	0.144

**Table 2.** Effect of metal ions on the activity of *I. terricola*  $\beta$ -glucosidase. Residual activity (%) in presence of 10 mmol/L of different cations and EDTA. Assays were performed in triplicates.

Compound (10 mmol/L)	% Residual activity* $\pm$ S.D
CaCl <sub>2</sub>	113 $\pm$ 13
MgCl <sub>2</sub>	114 $\pm$ 18
KCl	106 $\pm$ 9
NaCl	113 $\pm$ 10
K <sub>2</sub> SO <sub>4</sub>	131 $\pm$ 8**
MnCl <sub>2</sub>	70 $\pm$ 4**
CoCl <sub>2</sub>	72 $\pm$ 5**
EDTA	91 $\pm$ 8

\*residual activity value of 100% ( $2 \times 10^{-9}$  katals) was determined in absence of these compounds using 10 mmol/L *p*NPG in 0.1 mol/L of sodium acetate buffer, pH 4.5.

\*\*Values with significant differences with respect to the activity in the absence of metals ( $p < 0.05$ ).

**Table 3.** Substrate specificity of  $\beta$ -glucosidase from *I. terricola* against different substrates. Each substrate was tested at a concentration of 10 mmol/L, except for Carboxymethylcellulose (5 g/L). Assays were performed in triplicates.

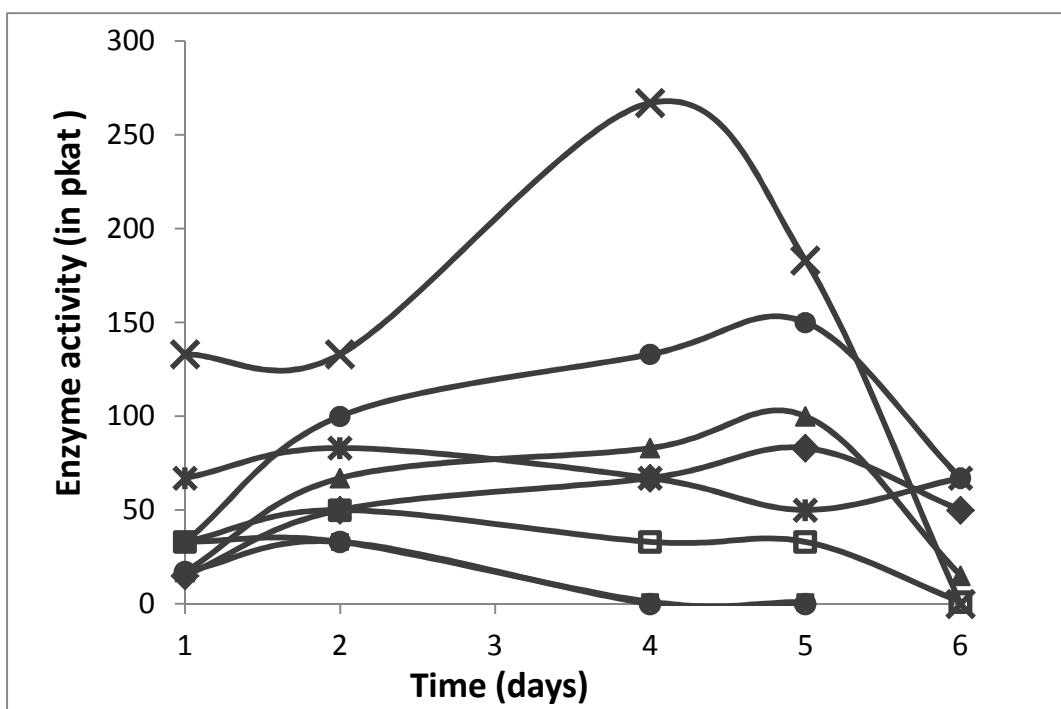
Substrate	Glycosidic linkage	% Relative activity* $\pm$ S.D.
<i>p</i> -nitrophenyl- $\beta$ -D-glucopyranoside	(1 $\rightarrow$ 4) – $\beta$	100 $\pm$ 5.0
<i>p</i> -nitrophenyl- $\alpha$ -L-arabinopyranoside	(1 $\rightarrow$ 6) – $\alpha$	5.0 $\pm$ 1.0
<i>p</i> -nitrophenyl- $\beta$ -D-galactopyranoside	(1 $\rightarrow$ 4) – $\beta$	3.0 $\pm$ 0.5
<i>o</i> -nitrophenyl- $\beta$ -D-galactopyranoside	(1 $\rightarrow$ 4) – $\beta$	1.0 $\pm$ 0.1
<i>p</i> -nitrophenyl- $\alpha$ -D-glucopyranoside	(1 $\rightarrow$ 4) – $\alpha$	<1
<i>p</i> -nitrophenyl- $\alpha$ -L-rhamnopyranoside	(1 $\rightarrow$ 6) – $\alpha$	<1
D-(+) Cellobiose	(1 $\rightarrow$ 4) – $\beta$	10 $\pm$ 1.0
Sucrose	(1 $\rightarrow$ 2) – $\alpha$	12 $\pm$ 1.0
Maltose	(1 $\rightarrow$ 4) – $\alpha$	3.0 $\pm$ 0.2
Carboxymethylcellulose	(1 $\rightarrow$ 4) – $\beta$	<1

\*Relative activity value of 100% was determined using 10 mmol/L pNPG in 0.1 mol/L sodium acetate buffer, pH 4.5.

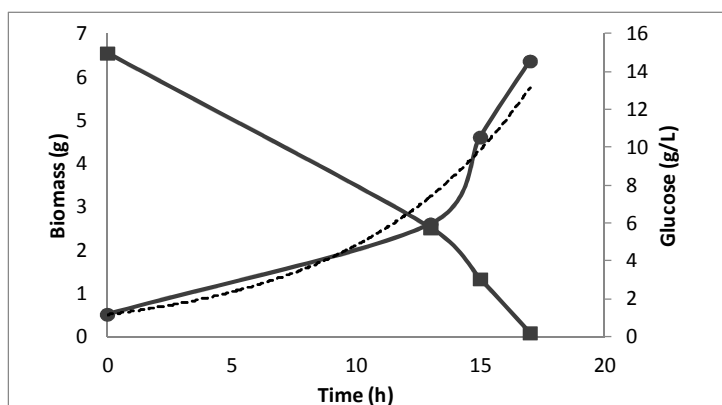
Table 4. Concentration of free volatile compounds (in  $\mu\text{g/L}$ ) for both, control and treated-wine. Odor threshold (in  $\mu\text{g/L}$ ) and descriptors of some compounds are shown. <sup>a, b</sup> Letters indicate the level of significant difference ( $p < 0.05$ ) according to a LSD test of ANOVA. N/A represent not available data. LRI refers to lineal retention index. Assays were performed in duplicates.

	Volatile compounds	LRI	Identity assignment <sup>c</sup>	Control $\mu\text{g/L} \pm \text{S.D.}$	Treated wine $\mu\text{g/L} \pm \text{S.D.}$	Odor threshold $\mu\text{g/L}$	Odor Descriptor
Acids	butyric acid	1670	B (1)	322 $\pm$ 15	387 $\pm$ 2		
	isovaleric acid	1705	B (1)	685 $\pm$ 3	725 $\pm$ 27	33	sweat, acid, rancid
	hexanoic acid	1845	A	904 $\pm$ 66	1032 $\pm$ 91	420	fatty, cheese
	octanoic acid	2072	A	990 $\pm$ 37	930 $\pm$ 236	500	fatty
	SUBTOTAL			22889 $\pm$ 1006	28926 $\pm$ 5556		
Alcohols	isobutyl alcohol	1093	A	3704 $\pm$ 222	3684 $\pm$ 233	40.000	fuel
	1-butanol	1155	A	138 $\pm$ 15	195 $\pm$ 26	150.000	like wine, medicine
	2-phenylethanol	1918	A	19988 $\pm$ 885	25852 $\pm$ 5200	N/A	N/A
	3-methyl-1-butanol	1221	A	94469 $\pm$ 1973	107957 $\pm$ 2386	30.000	whisky, malt, smoked
	tyrosol	2999	B (4)	8175 $\pm$ 300	9380 $\pm$ 417	N/A	N/A
	benzyl alcohol	1882	A	122 $\pm$ 12	145 $\pm$ 24	200.000	floral, rose, phenolic, balsamic
	SUBTOTAL			106608 $\pm$ 2522	121361 $\pm$ 3086		
Esters	ethyl lactate	1353	A	213216 $\pm$ 5123	250722 $\pm$ 6225	60.000	strawberry, rapsberry
	ethyl-3-hydroxybutyrate	1527	A	280 $\pm$ 7	324 $\pm$ 11	N/A	N/A
	diethyl succinate	1714	A	5383 $\pm$ 19	6115 $\pm$ 300	100.000	overripe melon, lavender
	diethyl malate	2058	A	368 $\pm$ 4	383 $\pm$ 35	760.000	green
	ethyl succinate	2370	B (1)	57507 $\pm$ 1937	85516 $\pm$ 20000	1.000.000	toffee, coffee
	ethyl hexanoate	1237	A	51 $\pm$ 17	32 $\pm$ 12	14	green apple
	ethyl octanoate	1436	A	42 $\pm$ 4	40 $\pm$ 7	500	sweet, banana, pineapple
	ethyl decanoate	1684	A	10 $\pm$ 2	12 $\pm$ 3	200	sweet, hazelnut oil
	SUBTOTAL			276857 $\pm$ 7113	343144 $\pm$ 26593		
C6	1-hexanol	1368	A	742 $\pm$ 16	781 $\pm$ 14	2500	grass just cut
	(Z)-3-hexen-1-ol	1382	A	68 $\pm$ 2 <sup>a</sup>	89 $\pm$ 3 <sup>b</sup>	400	green, kiwi
	SUBTOTAL			810 $\pm$ 18	870 $\pm$ 17		
Norisoprenoids	vomifoliol	3167	B (2)	9 $\pm$ 1 <sup>a</sup>	15 $\pm$ 1 <sup>b</sup>	N/A	N/A
	3-oxo-alpha-ionol	2651	B (3)	8 $\pm$ 1 <sup>a</sup>	13 $\pm$ 1 <sup>b</sup>	N/A	honey, apricorts
	SUBTOTAL			17 $\pm$ 2 <sup>a</sup>	28 $\pm$ 2 <sup>b</sup>		
Phenols	2,6-dimethoxyphenol	2240	A	595 $\pm$ 82 <sup>a</sup>	1039 $\pm$ 189 <sup>b</sup>	570	nutty, smoky
	guaiacol	1855	A	15 $\pm$ 6 <sup>a</sup>	71 $\pm$ 1 <sup>b</sup>	75	smoky
	SUBTOTAL			610 $\pm$ 88 <sup>a</sup>	1110 $\pm$ 190 <sup>b</sup>		

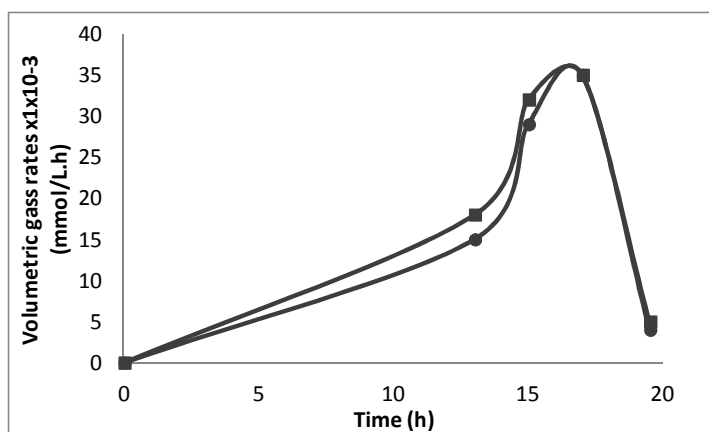
<sup>c</sup> A: identities confirmed by comparing mass spectra and retention times with those of authentic standards supplied by Aldrich (Milwaukee, WI) and Fluka (Buchs, Switzerland), B: identities tentatively assigned by comparing mass spectra with those obtained from the literature [(1) Adams, R. P. (2001). Identification of essential oil components by gas chromatography/ quadrupole mass spectroscopy. (2nd ed.). Stockton: Allured-Carol Steam IL, (469 pp); McLafferty, F. W., & Stauffer, D. B. (1991). The Wiley/NBS Registry of Mass Spectral Data. (5th ed.). New York: Wiley and Sons, (7872 pp). (2) Strauss, C. R., Wilson, B., & Williams, P. J. (1997). 3-Oxo- $\alpha$ -Ionol, Vomifoliol and Roseoxide in *Vitis Vinifera* Fruit. *Phytochemistry*, 26, 1995–1997. (3) Marais, J., Versini, G., Van Wyk, C. J., & Rapp, A. (1992). Effect of region on free and bound monoterpene and C<sub>13</sub>-norisoprenoid concentrations in Weisser Riesling wines. *South African Journal for Enology and Viticulture*, 13, 71–77.(4) Strauss, C. R., Gooley, P. R., Wilson, B., & Williams, P. J. (1987). Application of Droplet Countercurrent Chromatography to the Analysis of Conjugated Forms of Terpenoids, Phenols, and Other Constituents of Grape Juice. *Journal of Agricultural and Food Chemistry*, 35(4), 519–524.].



**Figure 1.** Extracellular Activity of  $\beta$ -glucosidase from *Issatchenkia terricola* in different culture media: (x) Synthetic; (●) YPG; (▲) Wheat; (✱) Narangi; (◻) Hesperidium; (■) Cane molasses; (⊙) Vegetable juice and (○) Glycerol. All cultures were performed in Erlenmeyer flasks at 150 rpm, 28°C and pH 5.

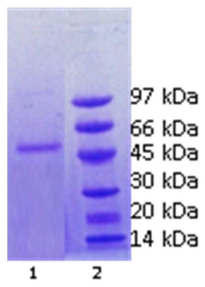


**Figure 2.** Time course of substrate consumption (—■—) and biomass production (—●—) in batch culture at bioreactor scale, using synthetic medium. Exponential distribution (-----) of biomass conversion equation is  $Y = 0.4984e^{0.1439x}$ ,  $r^2 = 0.983$ .



**Figure 3.** Time course of O<sub>2</sub> consumption (●) and CO<sub>2</sub> production (■) in batch culture at bioreactor in synthetic medium.





**Figure 4.** Sodium dodecyl sulfate electrophoresis in polyacrylamide in a Phast gel (Homo12.5%)  
Lane 1: purified enzyme extract; Lane 2: molecular weight marker.

1. The production of  $\beta$ -glucosidase from *Issatchenkia terricola* was optimized.
2.  $\beta$ -Glucosidase was very active on the hydrolysis of red wine glucosides.
3. GC-MS analysis of treated wine revealed the release of several volatile compounds.
4. Sensory evaluation showed significant differences between treated and control wine.
5.  $\beta$ -Glucosidase developed wine aroma without compromising its color.

ACCEPTED MANUSCRIPT