




Left ventricular global longitudinal strain in bicuspid aortic valve patients: head-to-head comparison between computed tomography, 4D flow cardiovascular magnetic resonance and speckle-tracking echocardiography

Allard T. van den Hoven¹ · Sultan Yilmazer¹ · Raluca G. Chelu^{1,2} · Roderick W. J. van Grootel¹ · Savine C. S. Minderhoud^{1,2} · Lidia R. Bons^{1,2} · An M. van Berendoncks¹ · Anthonie L. Duijnhouwer³ · Hans-Marc J. Siebelink⁴ · Annemien E. van den Bosch¹ · Ricardo P. J. Budde^{1,2} · Jolien W. Roos-Hesselink¹ · Alexander Hirsch^{1,2} 

Received: 26 January 2020 / Accepted: 14 May 2020
© The Author(s) 2020

Abstract

Left ventricular global longitudinal strain (LVGLS) analysis is a sensitive measurement of myocardial deformation most often done using speckle-tracking transthoracic echocardiography (TTE). We propose a novel approach to measure LVGLS using feature-tracking software on the magnitude dataset of 4D flow cardiovascular magnetic resonance (CMR) and compare it to dynamic computed tomography (CT) and speckle tracking TTE derived measurements. In this prospective cohort study 59 consecutive adult patients with a bicuspid aortic valve (BAV) were included. The study protocol consisted of TTE, CT, and CMR on the same day. Image analysis was done using dedicated feature-tracking (4D flow CMR and CT) and speckle-tracking (TTE) software, on apical 2-, 3-, and 4-chamber long-axis multiplanar reconstructions (4D flow CMR and CT) or standard apical 2-, 3-, and 4-chamber acquisitions (TTE). CMR and CT GLS analysis was feasible in all patients. Good correlations were observed for GLS measured by CMR ($-21 \pm 3\%$) and CT ($-20 \pm 3\%$) versus TTE ($-20 \pm 3\%$, Pearson's r : 0.67 and 0.65, $p < 0.001$). CMR also correlated well with CT (Pearson's r 0.62, $p < 0.001$). The inter-observer analysis showed moderate to good reproducibility of GLS measurement by CMR, CT and TTE (Pearson's r : 0.51, 0.77, 0.70 respectively; $p < 0.05$). Additionally, ejection fraction (EF), end-diastolic and end-systolic volume measurements (EDV and ESV) correlated well between all modalities (Pearson's $r > 0.61$, $p < 0.001$). Feature-tracking GLS analysis is feasible using the magnitude images acquired with 4D flow CMR. GLS measurement by CMR correlates well with CT and speckle-tracking 2D TTE. GLS analysis on 4D flow CMR allows for an integrative approach, integrating flow and functional data in a single sequence. Not applicable, observational study.

Keywords Echocardiography · Computed tomography · Cardiac magnetic resonance imaging · 4D flow · Global longitudinal strain · Bicuspid aortic valve

Abbreviations

LV	Left ventricular	CT	Computed tomography
GLS	Global longitudinal strain	BAV	Bicuspid aortic valve
TTE	Transthoracic echocardiography	EF	Ejection fraction
CMR	Cardiovascular magnetic resonance	EDV	End-diastolic volume
		ESV	End-systolic volume measurements
		SSFP	Steady state free-precession
		DLP	Dose length product
		2D	Two dimensional
		3D	Three dimensional
		4D	Four dimensional
		COV	Coefficient of variation

Electronic supplementary material The online version of this article (<https://doi.org/10.1007/s10554-020-01883-9>) contains supplementary material, which is available to authorized users.

✉ Alexander Hirsch
a.hirsch@erasmusmc.nl

Extended author information available on the last page of the article

LVOT Left ventricular outflow tract
SD Standard deviation

Introduction

For decades left ventricular (LV) ejection fraction (EF) has been the gold standard for quantification of systolic LV function [1]. It has been a key metric in therapy and prognostication, in particular in patients with valvular heart disease. However, more sensitive methods have since been in development; [2] of which LV global longitudinal strain (GLS) is currently accepted as a more sensitive measurement, that may already be reduced before a decrease in LV EF can be observed. Moreover LV GLS allows for quantitative assessment of global and segmental ventricular function by measuring myocardial deformation, largely independent of angle and ventricular geometry [3–5]. GLS is defined as the percentage of shortening between the end-diastolic and end-systolic length of the myocardium. This technique of deformation measurement has been validated in different populations using speckle-tracking echocardiography [5–15]. More recently it was shown that GLS can also be derived from multiphase Computed Tomography (CT) datasets and conventional Cardiovascular Magnetic Resonance (CMR) steady state free-precession (SSFP) cine imaging using feature-tracking algorithms [16, 17]. However, these techniques, especially GLS measurement using CT are still new and not yet very well validated. In this study we propose a novel method that uses this feature-tracking algorithm on magnitude images acquired during 4D flow CMR to quantify LV volumes and GLS. 4D flow CMR allows for comprehensive post-hoc evaluation of blood flow patterns by 3D blood flow visualization and quantification of flow parameters [18]. Previous studies have shown that quantification of ventricular volume and function can be accomplished with 4D flow MRI with precision and inter-observer agreement comparable to that of SSFP cine imaging [19, 20]. Strain analysis would be a valuable additional feature of 4D flow CMR, as this would allow for integrative analysis of flow and function in one sequence.

The aim of this study was to assess the feasibility of left ventricular global longitudinal strain (LVGLS) measurement using magnitude 4D flow Cardiovascular Magnetic Resonance (CMR) and dynamic computed tomography (CT) datasets, and to provide data on the correlation between these novel approaches and the ‘gold standard’ of speckle-tracking derived GLS values using two-dimensional echocardiography (TTE).

Methods

In this prospective cohort study, adult patients with a bicuspid aortic valve (BAV) were included [21–23] The study protocol consisted of TTE, CT and CMR on the same day. The inclusion criteria were age ≥ 18 year and one of the following: [1] aortic stenosis (gradient > 2.5 m/s), [2] aortic regurgitation (at least moderate) or [3] ascending aortic dilation ≥ 40 mm and/or aortic size index > 2.1 cm/ m^2 . Patients with contra-indications to CT, CMR or contrast agents were excluded. For the current study we only included patients who underwent at least two of the three imaging modalities. The study complied with the Declaration of Helsinki and was approved by the medical ethical committee of the Erasmus Medical Center (MEC14-225). Written informed consent was provided by all patients.

Echocardiography

One of two experienced sonographers performed a standard two-dimensional transthoracic echocardiogram. All studies were acquired using harmonic imaging on an EPIQ7 ultrasound system (Philips Medical Systems, Best, the Netherlands) equipped with an $\times 5$ –1 matrix-array transducer (composed of 3040 elements with 1–5 MHz). A non-foreshortened apical (A) four-chamber (ch), A3ch and A2ch were recorded with manual rotation. All echocardiographic images were obtained with a frame rate > 60 frames per second.

Computed tomography

Acquisition was performed using a dual-source CT (Somatom Force or Somatom Definition Flash, Siemens Healthcare, Forchheim, Germany). Retrospective ECG-gated spiral acquisition was applied, and kV was modulated to patient size and a vascular exam type. Dose modulated ECG-pulsing was employed with nominal tube current during the 0 to 40% window of the R-R interval, and tube current reduced to 20% of the nominal output for the remainder to reduce the radiation dose. Reference tube current was set at 150 mAs per rotation. The pitch was adapted to increase proportionally with higher heart rates. No beta blockers were administered prior to the scan. Reconstructions were made with a medium smooth kernel. In total 20 different reconstructions with a slice thickness of 1.5 mm and 1.0 mm overlap were made in each patient at every 5% of the R–R interval. The mean dose length product (DLP) was 362 mGy-cm (estimated effective dose 5 mSv, using a conversion factor of $k = 0.017$). A 65 ml

bolus of iodinated contrast material (Iodixanol 320, Visipaque, GE Healthcare, Cork, Ireland) was administered through an antecubital vein followed by a 40 ml 70/30% saline/contrast medium bolus, both at 5 ml/s.

Cardiovascular magnetic resonance imaging

Image acquisition was performed using a 1.5 T clinical MRI scanner (Discovery MR450, GE Medical Systems, Milwaukee, WI, USA) using a 32-channel phased-array cardiac surface coil. The imaging protocol consisted of black blood TSE aorta, 2D phase contrast images for pulse wave velocity measurements, SSFP for aortic distensibility measurements, contrast enhanced MR angiography and 4D flow CMR of the entire heart and aorta. The 4D flow CMR was acquired immediately after the bolus injection of 0.1–0.2 mmol/kg gadolinium-based contrast agent (Gadovist 1 mmol/ml, Bayer, Mijdrecht, The Netherlands). The 4D flow sequence has been described before [24]. In short the sequence was prescribed in axial plane, including the entire thorax in the field of view. The k-space was filled with variable-density Poisson-disc under sampling with acceleration factors of 1.8×1.8 (phase \times slice) and the parallel imaging algorithm used was ESPIRiT. Typical scan parameters were: matrix $192 \times 160 \times 78$, acquired resolution $2.1 \times 1.8 \times 2.8$ mm, reconstructed resolution $2.1 \times 1.8 \times 1.4$ mm, flip angle 15° , views per segment 4, bandwidth 63 kHz, number of

reconstructed phases 20 per cardiac cycle, and a velocity encoded value set at 250 cm/s. Due to restricted scan time per patient no SSFP cine images were acquired.

Image analysis

All images (CMR, CT and TTE) were analyzed by one observer (A.T.), who had 6 years of experience in cardiovascular imaging, in a random order and blinded to the results of the other image modalities. The TTE, CT, and CMR data was then re-measured by a second observer (S.Y.), who has one year of experience, blinded to the results of the first observer and to the corresponding measurements of the other modalities. For 2D TTE, speckle tracking analysis was performed using dedicated commercially available software (2D Cardiac Performance Analysis, Tomtec Imaging Systems). End-systolic and end-diastolic frames were identified manually; additionally the annulus and apex were identified manually in end-systole (Fig. 1). Subsequently, the software semi-automatically detected the end-diastolic and end-systolic myocardial contours. These contours were visually checked and corrected if necessary. This process was performed in all apical views (A2ch, A3ch, and A4ch).

All CT and CMR images were analyzed semi-automatically using commercially available software from Medis Medical Imaging Systems, Leiden The Netherlands. All images were loaded into the Medis Suite software (version:

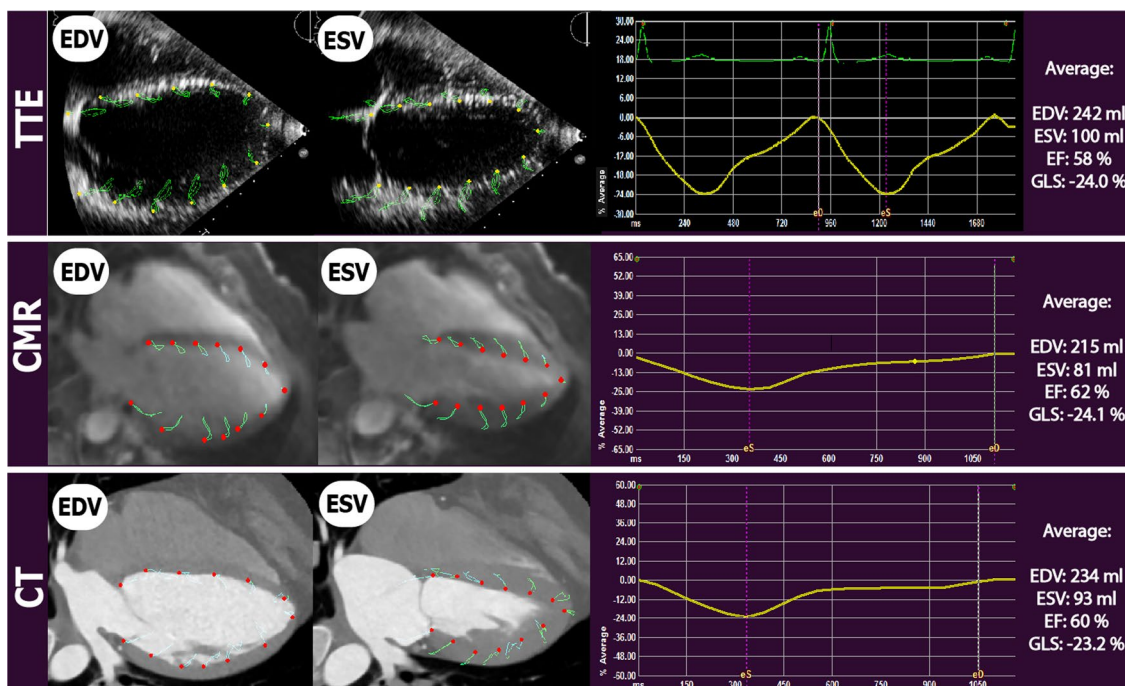


Fig. 1 Left ventricular parameters by three different modalities in the same patient. *TTE* Transthoracic Echocardiography, *CT* Computed Tomography, *CMR* Cardiovascular Magnetic Resonance, *EDV* end-

diastolic volume, *ESV* end-systolic volume, *EF* Ejection Fraction, *GLS* Global Longitudinal Strain. Yellow lines depict GLS during the cardiac cycle. *eS* end-systolic phase, *eD* End-diastolic phase

3.1.16.6). A2ch, A3ch, and A4ch reconstructions were made from the 3D data sets using Medis 3D View (version: 3.1.18.1). For the CMR analysis only the magnitude images, which contain the anatomical data, of the 4D flow data set were used. All cardiac phases were included in the multi-plane reconstructions and endocardial contours were drawn manually at both end-diastole and end-systole using Medis QMass software (version: 8.1.30.4) where the papillary muscles and trabeculations were included in the LV lumen. Subsequently GLS, ejection fraction (EF), end-diastolic and end-systolic volume (EDV and ESV) were calculated using QStrain software (version: 3.1.16.6). Volumes were corrected for body surface area (BSA). BSA was calculated according to the Dubois formula [25]. In QMass LV contours were drawn manually and focused on adequate tracking of the myocardium for precise strain analysis. However, changes to the contours necessary for optimal tracking of the myocardium caused an underestimation of the ESV. Therefore, in order to provide data on the inter-modality variability of the volumes, a second set of separate endocardial contours had to be drawn for the measurement EDV, ESV and EF. The second trace of endocardial contours, drawn for the volumetric analysis, used standard anatomical landmarks (Supplemental Video 1). However, for adequate strain analysis the left ventricular outflow tract (LVOT) had to be excluded, and the first trace therefore started more apically in both end-systole and end-diastole, (Supplemental Video 2) to prevent highly positive segmental strain disturbing GLS measurement. For the inter-observer variability, twenty patients were chosen at random.

Statistical analysis

The IBM SPSS® statistics 21.0 software was used to analyze the data. Continuous variables were presented as mean \pm standard deviation (SD) or as median with an interquartile range. Categorical variables were presented as frequencies and percentages. We tested for normality by calculating Z-values of skewness and kurtosis, using the Shapiro–Wilk test and by visually assessing the data. For comparison of normally distributed continuous variables between two groups the student's t-test was used. To quantify correlations the Pearson correlation test was applied. Inter-observer agreement between two investigators was assessed using Bland–Altman analysis [26]. The bias was defined as the mean absolute difference (i.e. the average absolute difference between two modalities). The limits of agreement between two measurements were determined as the mean of the difference \pm 1.96 SD. Additionally, the coefficient of variation (COV) was provided to compare the dispersion of two variables. The COV was defined as the SD of the differences of two measurements divided by the

mean of their means. The statistical tests were two sided and a p-value < 0.05 was considered significant.

Results

Fifty-nine patients were included, of whom 37 men (63%). Their baseline characteristics are presented in Table 1. In 56 patients (95%) echo measurements could be performed, two patients did not undergo echocardiography due to organizational reasons and one patient was excluded because of insufficient image quality. In total 53 patients underwent a CT scan, of which one patient was excluded due to technical limitations, therefore 52 (88%) patients were included for CT analysis. In six patients no CT scan was done due to organizational reasons. In 48 patients (83%) 4D flow CMR was performed. In eleven patients 4D flow CMR was missing due to organizational reasons (scan time per patient was restricted and therefore 4D flow could not always be performed in all patients). The results of all measurements

Table 1 Baseline characteristics

Baseline characteristics	Median [IQR] (n = 59)
Age, years	34 [19]
Height, cm	180 [23]
Weight, kg	75 [19]
BMI, kg/m ²	24 [3]
BSA, m ²	1.9 [0.4]
SBP, mmHg	123 [17]
DBP, mmHg	79 [16]
Aortic valve	
V _{max} , m/s	2.2 (1.6)
Peak Gradient, mmHg	19 (32)
AoI grade—none	12 (20)
AoI grade—moderate	34 (58)
AoI grade—severe	13 (22)
Sievers type*	
Type 0—lat	6 (10)
Type 0—ap	7 (12)
Type 1—LR	23 (49)
Type 1—RN	7 (12)
Type 1—LN	1 (2)
Type 2—LR/RN	7 (12)
Undetermined	2 (2)

Data are presented as median [IQR] or n(%)

BMI body-mass index, BSA body surface area, SBP and DBP systolic and diastolic blood pressure, V_{max} peak aortic valve velocity, AoI aortic valve insufficiency

*Valve type according to Sievers classification

Table 2 Left ventricular parameters per imaging modality

	All patients*			All three modalities completed ^a		
	CT (n=52)	CMR (n=48)	TTE (n=56)	CT (n=39)	CMR (n=39)	TTE (n=39)
GLS (%)	-20 ± 3	-21 ± 3	-20 ± 3	-21 ± 2	-21 ± 3	-20 ± 3
EF (%)	58 ± 6	54 ± 7	55 ± 6	58 ± 5	55 ± 7	55 ± 5
EDV (ml)	192 ± 65	203 ± 62	185 ± 64	183 ± 58	193 ± 62	180 ± 57
EDV/BSA (ml/m ²)	99 ± 26	105 ± 26	95 ± 26	95 ± 24	100 ± 24	94 ± 24
ESV (ml)	82 ± 33	94 ± 34	83 ± 33	77 ± 28	87 ± 32	81 ± 29
ESV/BSA (ml/m ²)	42 ± 13	48 ± 15	42 ± 15	40 ± 12	45 ± 13	42 ± 12

EDV end-diastolic volume, ESV end-systolic volume, EF ejection fraction, GLS global longitudinal strain, BSA body surface area, TTE transthoracic echocardiography, CT computed tomography, CMR cardiovascular magnetic resonance

*In this analysis all patients that completed 2 or more imaging modalities were considered

^aIn this sensitivity analysis data is shown when only patients are considered that completed all three imaging modalities Data are presented as mean ± standard deviation

Table 3 Inter-modality agreement

	All Patients					All three modalities				
	Pearson's r ^a	Bias ^b	Mean difference	Lower LOA	Upper LOA	Pearson's r ^a	Bias ^b	Mean difference	Lower LOA	Upper LOA
	CMR vs. TTE (n=45)					CMR vs. TTE (n=39)				
GLS (%)	0.67	3	-2	-7	3	0.69	2	-2	-6	3
EF (%)	0.61	4	0	-11	10	0.62	4	0	-10	11
EDV (ml)	0.84	31	16	-53	85	0.86	28	13	-50	75
ESV (ml)	0.82	17	8	-32	47	0.85	15	6	-28	40
	CT vs. TTE (n=49)					CT vs. TTE (n=39)				
GLS (%)	0.65	2	-1	-5	4	0.65	2	-1	-5	3
EF (%)	0.67	4	2	-6	11	0.69	4	3	-5	11
EDV (ml)	0.85	26	8	-61	77	0.88	23	3	-54	59
ESV (ml)	0.83	13	0	-36	36	0.87	12	-4	-33	25
	CT vs. CMR (n=42)					CT vs. CMR (n=39)				
GLS (%)	0.62	2	1	-4	6	0.56	2	1	-5	6
EF (%)	0.68	5	3	-8	14	0.56	5	3	-8	14
EDV (ml)	0.93	19	-11	-56	35	0.93	18	-10	-54	33
ESV (ml)	0.90	14	-11	-40	19	0.90	13	-10	-38	18

LOA limit of agreement, EDV end-diastolic volume, ESV end-systolic volume, EF ejection fraction, GLS global longitudinal strain, TTE transthoracic echocardiography, CT computed tomography, CMR cardiovascular magnetic resonance

^aall significant with a p < 0.001

^bDefined as the mean absolute difference

are presented per modality in Table 2. The results of the inter-modality agreement are presented in Table 3. All CT and MR scans were included. No scans (CT or CMR) were excluded because of insufficient image quality. A sensitivity analysis was conducted which showed that there was no significant difference when only the patients who underwent all three modalities were considered (n = 39) (Tables 2 and 3).

Left ventricular global longitudinal strain and ejection fraction

When comparing CMR and CT versus TTE, strong correlations (Table 3: Pearson's r: 0.67, p < 0.001 and Pearson's r: 0.65, p < 0.001 respectively) were found for GLS. However, especially CMR seemed to slightly overestimate GLS with a mean difference -2% and a bias of 3% when compared

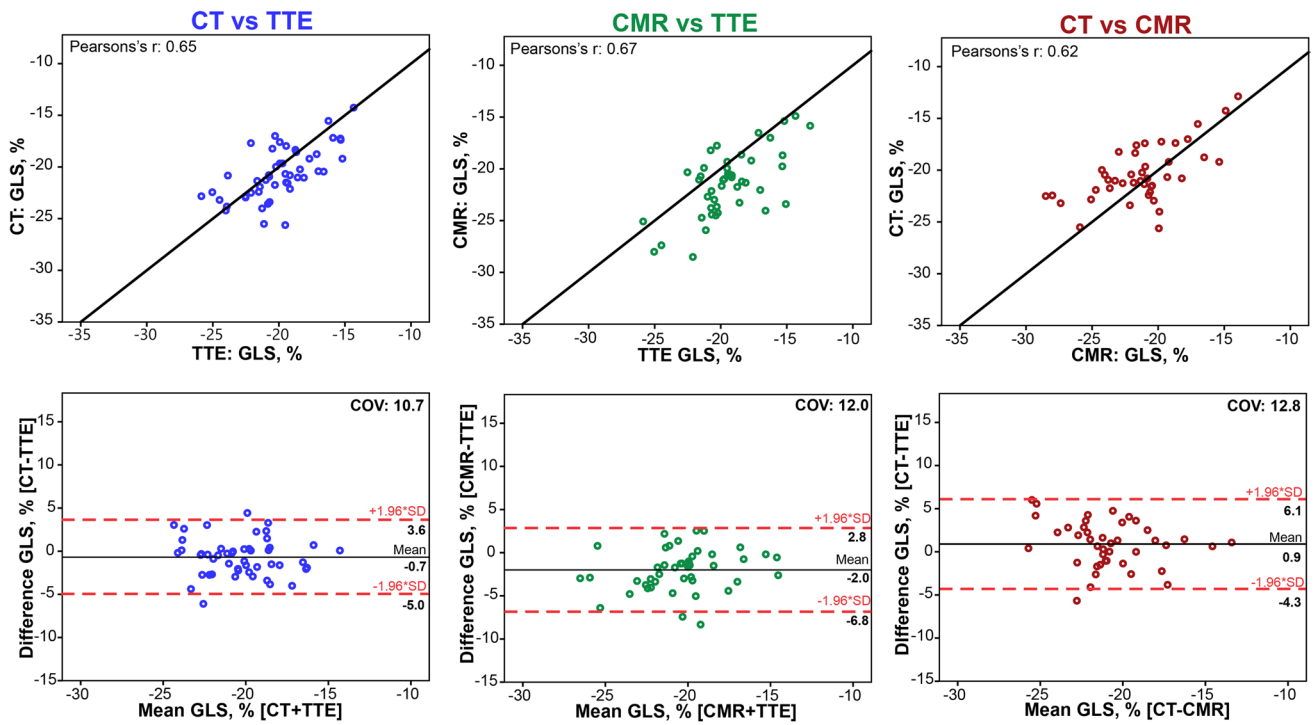


Fig. 2 Inter-modality agreement for global longitudinal strain. Agreement between TTE Transthoracic Echocardiography, CT Computed Tomography, CMR Cardiovascular Magnetic Resonance, GLS global longitudinal strain. Bland–Altman plots and identity line (black) for

CT versus TTE (blue) and CMR versus TTE (green) and CT versus CMR (red). Dashed red lines indicate ± 1.96 SD. COV coefficient of variation

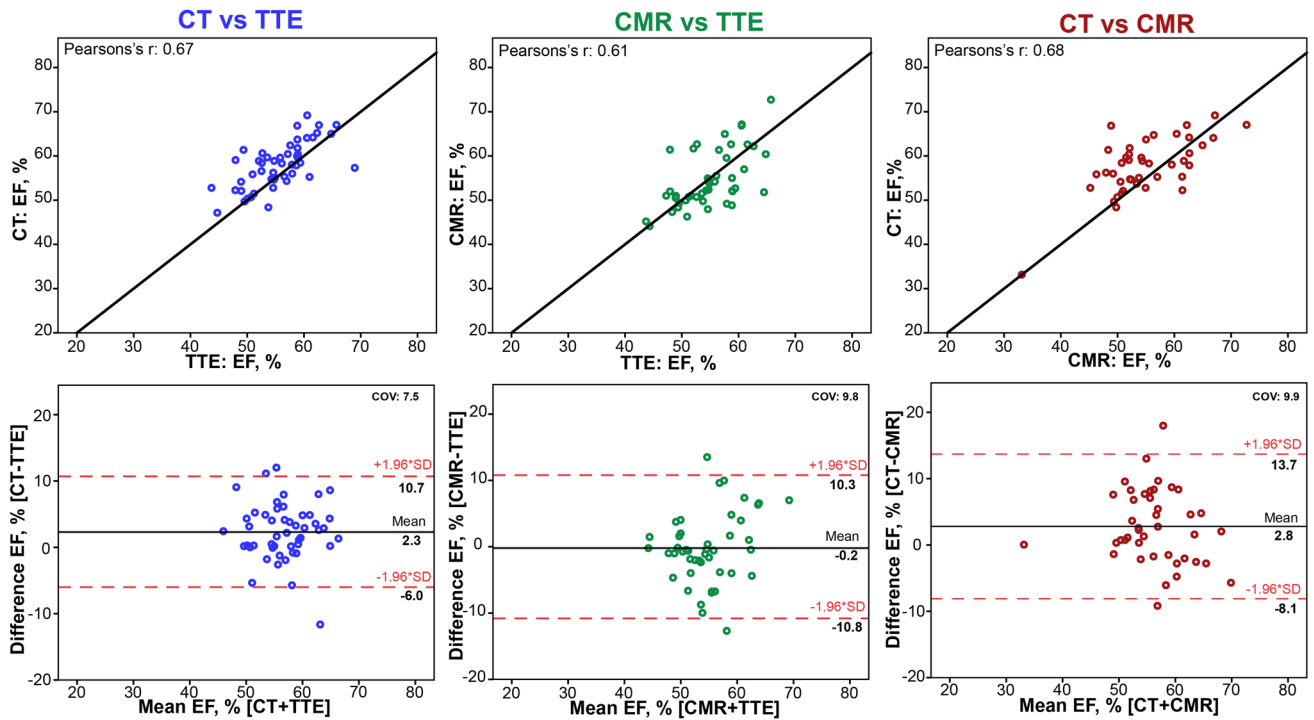


Fig. 3 Inter-modality agreement for ejection fraction. Agreement between TTE Transthoracic Echocardiography, CT Computed Tomography, CMR Cardiovascular Magnetic Resonance, EF ejection

fraction. Bland–Altman plots and identity line (black) for CT versus TTE (blue) and CMR versus TTE (green) and CT versus CMR (red). Dashed red lines indicate ± 1.96 SD. COV coefficient of variation

to TTE (Fig. 2). The results of the EF measurements per modality are presented in Table 2; results for the agreement analysis of EF are shown in Table 3 and Fig. 3. Of all three modalities EF, measurement by CT yielded the highest mean EF: $58 \pm 6\%$, where CMR yielded the lowest mean EF of the three modalities ($54 \pm 7\%$).

Volume measurement

Correlations for LV end-diastolic volumes (Supplemental Fig. 4) were strong for both CMR and CT compared to TTE (Table 3, Pearson's r : 0.84 and 0.85, both $p < 0.001$ respectively), where the mean difference was smallest between CT and TTE. As shown in Table 2, EDV measurements were larger on CMR (203 ± 62 ml) compared with TTE (185 ± 64 ml), which resulted in the largest bias of 31 ml and limits of agreement ranging between -53 ml and 85 ml.

Correlations for ESV were comparable to those found for EDV (Supplemental Fig. 5). ESV measured by CMR and CT correlated strongly with TTE (Pearson's r : 0.82 and 0.83 respectively, both $p < 0.001$). Here too CT compared best with TTE with a mean difference of -0.3 ml (bias: 13 ml) versus 7.8 ml on average for CMR compared with TTE (bias: 17 ml).

Inter-observer variability

Inter-observer variability was assessed for all three modalities; the results of the second observer agreement analysis for TTE are presented in Supplemental Fig. 6. Both for GLS and EF good inter-observer agreement was found (Pearson's r : 0.70, $p < 0.001$ and 0.60, $p = 0.006$ respectively), and also for EDV and ESV (Pearson's r : 0.96 and 0.90, $p < 0.001$ respectively). The relatively large mean difference for EF (-9.4%) for TTE, was mainly driven by observer 1 overestimating both EDV (mean difference: 13.7 ml) and ESV, with a tendency towards a more significant overestimation of the ESV (mean difference: 27.2 ml) relative to the EDV. Inter-observer variability for CT is presented in Supplemental Fig. 7, where a strong correlation between observers was found for GLS with a mean difference of -1.8% on average. Finally, inter-observer variability for CMR is presented in Supplemental Fig. 8, where a moderate correlation for GLS (Pearson's r : 0.51, $p = 0.023$) was found.

Discussion

In this prospective cohort study we demonstrated for the first time that the assessment of GLS is feasible using a feature-tracking algorithm on the magnitude images acquired by 4D flow CMR directly after gadolinium contrast. This opens the way for an integrative one-sequence approach in which both

flow and functional information can be acquired simultaneously. Moreover, in this study functional LV parameters measured by CMR correlated well with 2D TTE, with a mean difference comparable to that found in other studies using 'conventional' SSFP cine CMR images [27–30]. On average GLS in our cohort of BAV patients was similar to that found using SSFP CMR images in a healthy adult population [31].

Although LV functional analysis by CT has been possible for a number of years there is limited data available on the value of CT in GLS assessment [16, 32–34]. CT has been shown to correlate closely with CMR and TTE for left ventricular assessment, [28] and more recently also for GLS analysis [29]. Additionally, studies have described good correlations between CT and TTE [16, 33]. Our study confirms these correlations with TTE and CMR for both GLS and EF. Furthermore, CT had the best reproducibility of all three modalities, reflected in the lowest coefficient of variation in the second-observer analysis. The observed overestimation of EF by CT compared to CMR could be explained by the fact that, especially on the long axis A3ch-view, papillary muscles are often difficult to discern resulting in a smaller ESV and subsequent high EF. Furthermore, unlike TTE and CMR, CT has the disadvantage of significant radiation exposure for the patient, since imaging of the complete cardiac cycle is necessary for GLS analysis.

CT and CMR correlated well both for GLS and EF. Based on the high spatial resolution CT could have been expected to outperform CMR, as CMR may require more observer interpretation in determining the endocardial contour. Indeed we observed a lower coefficient of variation for CT versus TTE (COV: 10.7) compared to CMR versus TTE (COV: 12.0) for both GLS and for EF (COV: 7.5 vs 9.8). Additionally, second observer analysis for CT showed a lower COV for all LV measurements.

A clear limitation of this study is the need for separate contours for the GLS and volumes, caused by the frequent inadequate tracking of the basal and mid and anterior septal segments by the feature-tracking algorithm on CT and CMR (Supplemental Fig. 9). Tracing the endocardial contour in the apical three chamber view from the mitral valve to the aortic valve orifice (Supplemental Video 1) often resulted in positive strain values in these segments, lowering the GLS. This could be resolved by placing the endocardial marker more apically (Supplemental Video 2) resulting in an underestimation of the EDV and ESV. A third video shows the same process for MR in apical three and 4 chamber views (Supplemental Videos 3 and 4 respectively). The difficulty here is that when abandoning the anatomical landmark there is no clear alternative, which introduces possible inter-observer variability. Although more time consuming we chose to draw a second endocardial tracing focusing on the volume quantification when this problem occurred. With

regard to the post-processing process, we found the TTE workflow to be significantly less time intensive compared to CT and CMR, partly because with TTE the sonographer directly acquired the apical 2-, 3-, and 4-chamber views. Both with CT and CMR the observer had to create these views retrospectively. This may allow for more precise reconstruction and analysis, but it is also more time intensive as it increases workflow complexity, and creates a possible source of bias between observers. It has been shown that both observer experience and the software used for analysis can have a significant influence on the agreement for CMR (30, 31) as for TTE (32). And although outside the scope of this study we agree that user experience is an important factor in LV functional analysis. This is perhaps best reflected in the second observer analysis for TTE, where a small but consistent difference in EDV and ESV resulted in a systematically lower EF for the second observer. Another limitation is that we did not have SSFP CMR cine images available for these patients, which would have allowed to also compare 4D flow CMR with the ‘gold standard’ for volume quantification and feature-tracking strain analyses on SSFP images. We feel that part of the variation between CMR and the other modalities could be explained by the inferior spatial resolution of the magnitude image datasets. Furthermore, the standard deviation of GLS and EF in this patient cohort is small, as all patients had relatively preserved LV function. A future study could evaluate how this technique performs in patients with a reduced LV function.

Conclusion

Feature-tracking GLS analysis is feasible using the magnitude images acquired by 4D flow CMR with adequate imaging quality. GLS measurement by CMR correlates well with CT and speckle-tracking 2D TTE. GLS analysis on 4D flow CMR allows for an integrative approach in which flow and functional data can be acquired in one sequence. Future studies should aim to validate these findings in a healthy control population, preferably compared with SSFP cine imaging.

Author contributions AT, SY, JW and AH drafted the work, additionally AL, HJ and AE made substantial contributions to the conception and design of the work and RG, RWJ, SM, LR and AM contributed to the acquisition, analysis and/or interpretation of data. All authors have substantially revised and approved the submitted version; and have agreed both to be personally accountable for the author’s own contributions and to ensure that questions related to the accuracy or integrity of any part of the work, even ones in which the author was not personally involved, are appropriately investigated, resolved, and the resolution documented in the literature.

Funding This study was funded by a grant of the Dutch Heart Foundation (The Hague, The Netherlands, Grant Number: 2013T093).

Data availability The data that support the findings of this study are available on request from the corresponding author [A.H.]. The data are not publicly available due to them containing information that could compromise individual research participant privacy.

Compliance with ethical standards

Conflict of interest R.G. Chelu works as consultant for Arterys Inc. None of the other authors have a financial association that might pose a conflict of interest in connection with this article at the time of submission. We did not have any contact with Medis during the conception of this work; they did not aid nor influence the study, either financially or intellectually.

Ethics approval The study complied with the Declaration of Helsinki and was approved by the medical ethical committee of the Erasmus Medical Center (MEC14-225).

Informed consent Written informed consent was provided by all patients.


Open Access This article is licensed under a Creative Commons Attribution 4.0 International License, which permits use, sharing, adaptation, distribution and reproduction in any medium or format, as long as you give appropriate credit to the original author(s) and the source, provide a link to the Creative Commons licence, and indicate if changes were made. The images or other third party material in this article are included in the article’s Creative Commons licence, unless indicated otherwise in a credit line to the material. If material is not included in the article’s Creative Commons licence and your intended use is not permitted by statutory regulation or exceeds the permitted use, you will need to obtain permission directly from the copyright holder. To view a copy of this licence, visit <http://creativecommons.org/licenses/by/4.0/>.

References

1. Bartle SH, Sanmarco ME, Dammann JF (1965) Ejected fraction: an index of myocardial function. *Am J Cardiol* 15(1):125
2. Marwick TH (2013) Methods used for the assessment of LV systolic function: common currency or tower of Babel? *Heart* 99(15):1078–1086
3. Stokke TM, Hasselberg NE, Smedsrud MK, Sarvari SI, Haugaa KH, Smiseth OA et al (2017) Geometry as a confounder when assessing ventricular systolic function: comparison between ejection fraction and strain. *J Am Coll Cardiol* 70(8):942–954
4. Menting ME, McGhie JS, Koopman LP, Vletter WB, Helbing WA, van den Bosch AE et al (2016) Normal myocardial strain values using 2D speckle tracking echocardiography in healthy adults aged 20 to 72 years. *Echocardiography* 33(11):1665–1675
5. Nagueh SF, Smiseth OA, Appleton CP, Byrd BF 3rd, Dokainish H, Edvardsen T et al (2016) Recommendations for the evaluation of left ventricular diastolic function by echocardiography: an update from the American Society of Echocardiography and the European Association of Cardiovascular Imaging. *Eur Heart J Cardiovasc Imaging* 17(12):1321–1360

6. Dokainish H, Sengupta R, Pillai M, Bobek J, Lakkis N (2008) Usefulness of new diastolic strain and strain rate indexes for the estimation of left ventricular filling pressure. *Am J Cardiol* 101(10):1504–1509
7. Amundsen BH, Crosby J, Steen PA, Torp H, Slordahl SA, Stoylen A (2009) Regional myocardial long-axis strain and strain rate measured by different tissue Doppler and speckle tracking echocardiography methods: a comparison with tagged magnetic resonance imaging. *Eur J Echocardiogr* 10(2):229–237
8. Ng AC, Delgado V, Bertini M, van der Meer RW, Rijzewijk LJ, Shanks M et al (2009) Findings from left ventricular strain and strain rate imaging in asymptomatic patients with type 2 diabetes mellitus. *Am J Cardiol* 104(10):1398–1401
9. Cheung YF, Liang XC, Chan GC, Wong SJ, Ha SY (2010) Myocardial deformation in patients with Beta-thalassemia major: a speckle tracking echocardiographic study. *Echocardiography* 27(3):253–259
10. Mu Y, Qin C, Wang C, Huojiaabudula G (2010) Two-dimensional ultrasound speckle tracking imaging in evaluation of early changes in left ventricular diastolic function in patients with essential hypertension. *Echocardiography* 27(2):146–154
11. Garceau P, Carasso S, Woo A, Overgaard C, Schwartz L, Rakowski H (2012) Evaluation of left ventricular relaxation and filling pressures in obstructive hypertrophic cardiomyopathy: comparison between invasive hemodynamics and two-dimensional speckle tracking. *Echocardiography* 29(8):934–942
12. de Bie MK, Ajmone Marsan N, Gaasbeek A, Bax JJ, Groeneveld M, Gabreels BA et al (2012) Left ventricular diastolic dysfunction in dialysis patients assessed by novel speckle tracking strain rate analysis: prevalence and determinants. *Int J Nephrol* 2012:963504
13. Chen S, Yuan J, Qiao S, Duan F, Zhang J, Wang H (2014) Evaluation of left ventricular diastolic function by global strain rate imaging in patients with obstructive hypertrophic cardiomyopathy: a simultaneous speckle tracking echocardiography and cardiac catheterization study. *Echocardiography* 31(5):615–622
14. Panoulas VF, Sulemane S, Konstantinou K, Bratsas A, Elliott SJ, Dawson D et al (2015) Early detection of subclinical left ventricular myocardial dysfunction in patients with chronic kidney disease. *Eur Heart J Cardiovasc Imaging* 16(5):539–548
15. Morris DA, Takeuchi M, Nakatani S, Otsuji Y, Belyavskiy E, Aravind Kumar R et al (2018) Lower limit of normality and clinical relevance of left ventricular early diastolic strain rate for the detection of left ventricular diastolic dysfunction. *Eur Heart J Cardiovasc Imaging* 19(8):905–915
16. Fukui M, Xu J, Abdelkarim I, Sharbaugh MS, Thoma FW, Althouse AD et al (2018) Global longitudinal strain assessment by computed tomography in severe aortic stenosis patients: feasibility using feature tracking analysis. *J Cardiovasc Comput Tomogr*. 13(2):157–162
17. Burris NS, Lima APS, Hope MD, Ordovas KG (2018) Feature tracking cardiac MRI reveals abnormalities in ventricular function in patients with bicuspid aortic valve and preserved ejection fraction. *Tomography* 4(1):26–32
18. Stankovic Z, Allen BD, Garcia J, Jarvis KB, Markl M (2014) 4D flow imaging with MRI. *Cardiovasc Diagn Ther* 4(2):173–192
19. Hanneman K, Kino A, Cheng JY, Alley MT, Vasanawala SS (2016) Assessment of the precision and reproducibility of ventricular volume, function, and mass measurements with ferumoxytol-enhanced 4D flow MRI. *J Magn Reson Imaging* 44(2):383–392
20. Hsiao A, Yousaf U, Alley MT, Lustig M, Chan FP, Newman B et al (2015) Improved quantification and mapping of anomalous pulmonary venous flow with four-dimensional phase-contrast MRI and interactive streamline rendering. *J Magn Reson Imaging* 42(6):1765–1776
21. van den Hoven AT, Mc-Ghie JS, Chelu RG, Duijnhouwer AL, Baggen VJM, Coenen A et al (2017) Transthoracic 3D echocardiographic left heart chamber quantification in patients with bicuspid aortic valve disease. *Int J Cardiovasc Imaging* 33(12):1895–1903
22. Bons LR, Duijnhouwer AL, Boccacini S, van den Hoven AT, van der Vlugt MJ, Chelu RG et al (2019) Intermodality variation of aortic dimensions: how, where and when to measure the ascending aorta. *Int J Cardiol* 276:230–235
23. van den Hoven AT, Chelu RG, Duijnhouwer AL, Demulier L, Devos D, Nieman K et al (2017) Partial anomalous pulmonary venous return in Turner syndrome. *Eur J Radiol* 95:141–146
24. Chelu RG, Horowitz M, Sucha D, Kardys I, Ingremeau D, Vasanawala S et al (2019) Evaluation of atrial septal defects with 4D flow MRI-multilevel and inter-reader reproducibility for quantification of shunt severity. *MAGMA* 32(2):269–279
25. Dubois M, Empl AM, Jaudzems G, Basle Q, Konings E (2019) Determination of 2- and 3-MCPD as well as 2- and 3-MCPD Esters and Glycidyl Esters (GE) in infant and adult/pediatric nutritional formula by gas chromatography coupled to mass spectrometry method first action 2018.03. *J AOAC Int* 102(3):903–914
26. Bland JM, Altman DG (1986) Statistical methods for assessing agreement between two methods of clinical measurement. *Lancet* 1(8476):307–310
27. Padiyath A, Gribben P, Abraham JR, Li L, Rangamani S, Schuster A et al (2013) Echocardiography and cardiac magnetic resonance-based feature tracking in the assessment of myocardial mechanics in tetralogy of Fallot: an intermodality comparison. *Echocardiography* 30(2):203–210
28. Greupner J, Zimmermann E, Grohmann A, Dubel HP, Althoff TF, Borges AC et al (2012) Head-to-head comparison of left ventricular function assessment with 64-row computed tomography, biplane left cineventriculography, and both 2- and 3-dimensional transthoracic echocardiography: comparison with magnetic resonance imaging as the reference standard. *J Am Coll Cardiol* 59(21):1897–1907
29. Kinno M, Nagpal P, Horgan S, Waller AH (2017) Comparison of echocardiography, cardiac magnetic resonance, and computed tomographic imaging for the evaluation of left ventricular myocardial function: part 1 (global assessment). *Curr Cardiol Rep* 19(1):9
30. Onishi T, Saha SK, Delgado-Montero A, Ludwig DR, Onishi T, Schelbert EB et al (2015) Global longitudinal strain and global circumferential strain by speckle-tracking echocardiography and feature-tracking cardiac magnetic resonance imaging: comparison with left ventricular ejection fraction. *J Am Soc Echocardiogr* 28(5):587–596
31. Mangion K, Burke NMM, McComb C, Carrick D, Woodward R, Berry C (2019) Feature-tracking myocardial strain in healthy adults- a magnetic resonance study at 3.0 tesla. *Sci Rep* 9(1):3239
32. Buss SJ, Schulz F, Mereles D, Hosch W, Galuschky C, Schummers G et al (2014) Quantitative analysis of left ventricular strain using cardiac computed tomography. *Eur J Radiol* 83(3):e123–e130
33. Ammon F, Bittner D, Hell M, Mansour H, Achenbach S, Arnold M et al (2019) CT-derived left ventricular global strain: a head-to-head comparison with speckle tracking echocardiography. *Int J Cardiovasc Imaging* 35(9):1701–1707
34. Marwan M, Ammon F, Bittner D, Rother J, Mekkhala N, Hell M et al (2018) CT-derived left ventricular global strain in aortic valve stenosis patients: a comparative analysis pre and post anscatheter aortic valve implantation. *J Cardiovasc Comput Tomogr* 12(3):240–244

Affiliations

Allard T. van den Hoven¹ · Sultan Yilmazer¹ · Raluca G. Chelu^{1,2} · Roderick W. J. van Grootel¹ ·
Savine C. S. Minderhoud^{1,2} · Lidia R. Bons^{1,2} · An M. van Berendoncks¹ · Anthonie L. Duijnhouwer³ ·
Hans-Marc J. Siebelink⁴ · Annemien E. van den Bosch¹ · Ricardo P. J. Budde^{1,2} · Jolien W. Roos-Hesselink¹ ·
Alexander Hirsch^{1,2} 

Allard T. van den Hoven
a.vandenhoven@erasmusmc.nl

Sultan Yilmazer
s.yilmazer@erasmusmc.nl

Raluca G. Chelu
raluca.saru@gmail.com

Roderick W. J. van Grootel
r.vangrootel@erasmusmc.nl

Savine C. S. Minderhoud
s.minderhoud@erasmusmc.nl

Lidia R. Bons
l.bons@erasmusmc.nl

An M. van Berendoncks
an.vanberendoncks@uantwerpen.be

Anthonie L. Duijnhouwer
Toon.Duijnhouwer@radboudumc.nl

Hans-Marc J. Siebelink
H.J.Siebelink@lumc.nl

Annemien E. van den Bosch
a.e.vandenbosch@erasmusmc.nl

Jolien W. Roos-Hesselink
j.roos@erasmusmc.nl

¹ Department of Cardiology, Erasmus MC, University Medical Center Rotterdam, Room Rg-419, P.O. Box 2040, 3000 CA Rotterdam, The Netherlands

² Department of Radiology and Nuclear Medicine, Erasmus MC, University Medical Center Rotterdam, Rotterdam, The Netherlands

³ Department of Cardiology, Radboud University Medical Center Rotterdam, Rotterdam, The Netherlands

⁴ Department of Cardiology, Leiden University Medical Center Rotterdam, Rotterdam, The Netherlands