

## Integrating fire-scar, charcoal and fungal spore data to study fire-events in the boreal forest of northern Europe

Journal:	<i>The Holocene</i>
Manuscript ID	HOL-19-0026
Manuscript Type:	Paper
Date Submitted by the Author:	19-Feb-2019
Complete List of Authors:	Stivrins, Normunds; University of Latvia, Department of Geography, Faculty of Geography and Earth Sciences; Tallinna Tehnikaulikool, Department of Geology Aakala, Tuomas; Helsingin Yliopisto, Department of Forest Sciences Ilvonen, Liisa; University of Oulu, Department of Mathematical Sciences Pasanen, Leena; Oulun Yliopisto, Research Unit of Mathematical Sciences Kuuluvainen, Timo; Helsingin Yliopisto, Department of Forest Sciences Vasander, Harri; Helsingin Yliopisto, Department of Forest Sciences Gałka, Mariusz; Adam Mickiewicz University, Department of Biogeography and Palaeoecology Disbrey, Helena; Helsingin Yliopisto, Department of Geosciences and Geography Liepins, Janis; Latvijas Universitate, Institute of Microbiology and Biotechnology Holmström, Lasse; University of Oulu, Department of Mathematical Sciences Seppä, Heikki; University of Helsinki, Department of Geology
Keywords:	forest hollow, Neurospora, tree rings, non-pollen palynomorphs, Finland, Russia
Abstract:	Fire is a major disturbance agent in the boreal forest, influencing many current and future ecosystem conditions and services. Surprisingly few studies have attempted to improve the accuracy of fire-event reconstructions even though the estimates of the occurrence of past fires may be biased, influencing the reliability of the models employing those data (e.g. C stock, cycle). This study aimed to demonstrate how three types of fire proxies – fire-scars from tree rings, sedimentary charcoal and, for the first time in this context, fungal spores of <i>Neurospora</i> – can be integrated to achieve a better understanding of past fire dynamics. By studying charcoal and <i>Neurospora</i> from sediment cores from forest hollows, and the fire scars from tree rings in their surrounds in southern Fennoscandian and western Russian boreal forest we produced composite fire-event data sets and fire-event frequencies, and estimated fire return intervals. Our estimates show that the fire return interval varied between 126–237 years during the last 11 thousand years. The highest fire frequency during the 18th–19th century can be associated with the anthropogenic influence, which abruptly decreased in the 20th century due to changes in the human use of fire. Importantly, statistical

1  
2  
3  
4  
5  
6  
7  
8  
9  
10  
11  
12  
13  
14  
15  
16  
17  
18  
19  
20  
21  
22  
23  
24  
25  
26  
27  
28  
29  
30  
31  
32  
33  
34  
35  
36  
37  
38  
39  
40  
41  
42  
43  
44  
45  
46  
47  
48  
49  
50  
51  
52  
53  
54  
55  
56  
57  
58  
59  
60

	tests revealed a positive relationship between other fire event indicators and Neurospora occurrence allowing us to pinpoint past fire-events at times when the sedimentary charcoal was absent, but Neurospora were abundant. We demonstrated how fire proxies with different temporal resolution can be linked, providing potential improvements in the reliability of fire history reconstructions from multiple proxies.

SCHOLARONE™  
Manuscripts

1  
2  
3 **Integrating fire-scar, charcoal and fungal spore data to study fire-events in the**  
4  
5  
6 **boreal forest of northern Europe**  
7

8  
9 **Normunds Stivrins,<sup>1,2,3</sup> Tuomas Aakala,<sup>4</sup> Liisa Ilvonen,<sup>5,6</sup> Leena Pasanen,<sup>5</sup> Timo Kuuluvainen,<sup>4</sup>**  
10  
11 **Harri Vasander,<sup>4</sup> Mariusz Galka,<sup>7</sup> Helena R Disbrey,<sup>2</sup> Janis Liepins,<sup>8</sup> Lasse Holmström,<sup>5</sup> and**  
12  
13 **Heikki Seppä<sup>2</sup>**  
14  
15

16  
17  
18  
19 <sup>1</sup>Department of Geography, University of Latvia, Latvia  
20

21  
22 <sup>2</sup>Department of Geosciences and Geography, University of Helsinki, Finland  
23

24  
25 <sup>3</sup>Department of Geology, Tallinn University of Technology, Estonia  
26

27  
28 <sup>4</sup>Department of Forest Sciences, University of Helsinki, Finland  
29

30  
31 <sup>5</sup>Research Unit of Mathematical Sciences, University of Oulu, Finland  
32

33  
34 <sup>6</sup>Department of Mathematics and Statistics, University of Helsinki, Finland  
35

36  
37 <sup>7</sup>Department of Geobotany and Plant Ecology, University of Lodz, Poland  
38

39  
40 <sup>8</sup>Institute of Microbiology and Biotechnology, University of Latvia, Latvia  
41  
42  
43

44 **Abstract**  
45

46  
47 Fire is a major disturbance agent in the boreal forest, influencing many current and future ecosystem  
48 conditions and services. Surprisingly few studies have attempted to improve the accuracy of fire-  
49 event reconstructions even though the estimates of the occurrence of past fires may be biased,  
50 influencing the reliability of the models employing those data (e.g. C stock, cycle). This study aimed  
51 to demonstrate how three types of fire proxies – fire-scars from tree rings, sedimentary charcoal and,  
52 for the first time in this context, fungal spores of *Neurospora* – can be integrated to achieve a better  
53  
54  
55  
56  
57  
58  
59  
60

1  
2  
3 understanding of past fire dynamics. By studying charcoal and *Neurospora* from sediment cores from  
4 forest hollows, and the fire scars from tree rings in their surrounds in southern Fennoscandian and  
5 western Russian boreal forest we produced composite fire-event data sets and fire-event frequencies,  
6 and estimated fire return intervals. Our estimates show that the fire return interval varied between  
7 126–237 years during the last 11 thousand years. The highest fire frequency during the 18<sup>th</sup>–19<sup>th</sup>  
8 century can be associated with the anthropogenic influence, which abruptly decreased in the 20<sup>th</sup>  
9 century due to changes in the human use of fire. Importantly, statistical tests revealed a positive  
10 relationship between other fire event indicators and *Neurospora* occurrence allowing us to pinpoint  
11 past fire-events at times when the sedimentary charcoal was absent, but *Neurospora* were abundant.  
12 We demonstrated how fire proxies with different temporal resolution can be linked, providing  
13 potential improvements in the reliability of fire history reconstructions from multiple proxies.  
14  
15  
16  
17  
18  
19  
20  
21  
22  
23  
24  
25  
26  
27  
28  
29  
30  
31

32 **Keywords:** forest hollow, *Neurospora*, tree rings, Finland, Russia  
33  
34  
35  
36

## 37 Introduction

38  
39  
40 Forest fires are a key disturbance in boreal forests, and characteristics of fire regimes are among the  
41 most important factors explaining the variation in forest and landscape structure and species  
42 composition (Aakala et al., 2018). Climate change is predicted to strongly influence fire occurrence  
43 in forest ecosystems in the future (Girardin et al., 2009; Khabarov et al., 2016). Boreal forests contain  
44 approximately one-third of the global forest area and one-third of terrestrial carbon stocks, and hence  
45 changes in fire activity will have a substantial impact on global carbon emissions (Flannigan, 2015).  
46 Fire regime changes can have additional impacts because high-intensity crown and low-intensity  
47 surface fires result in different net effects on climate as a consequence of their contrasting impacts on  
48 terrestrial albedo (Rogers et al., 2015). Given the current and future societal importance of forest fires  
49  
50  
51  
52  
53  
54  
55  
56  
57  
58  
59  
60

1  
2  
3 and their long-term influence on many ecological processes, it is necessary to improve our  
4  
5 understanding of fire occurrence over long time scales.  
6  
7

8 Documentary records can provide detailed information on fires and their occurrence over  
9  
10 large areas, but their temporal coverage in the boreal zone is limited to 100–150 years at best  
11  
12 (Wallenius, 2011). However, there are several ways of acquiring information about past fire activity  
13  
14 from biological archives, such as tree rings or organic sediments. These archives differ in their  
15  
16 resolution and their temporal coverage. Tree-ring-based reconstructions of past fire activity employ  
17  
18 either information on the age structures of trees or stands that initiated after fire (Bergeron et al.,  
19  
20 2004), the presence of fire scars on trees that were damaged but survived the fires (Wallenius et al.  
21  
22 2010, Aakala 2018), or both (Lankia et al., 2012). While of high temporal resolution, tree-ring-based  
23  
24 fire history reconstructions in the boreal forest rarely cover more than a few centuries (Wallenius et  
25  
26 al., 2010). Low-intensity fires may not always leave fire scars, potentially causing bias in fire regime  
27  
28 reconstructions concerning surface fires (Dieterich and Swetnam, 1984).  
29  
30  
31  
32  
33

34 Charcoal particles that are formed during incomplete combustion of organic compounds in  
35  
36 forest fires and become deposited within organic sediments are another widely applied proxy in fire  
37  
38 reconstructions. Every forest fire has a unique combination of fuels and temperatures that define the  
39  
40 intensity and severity of the fire and produce a range of different charcoal forms (Feurdean et al.,  
41  
42 2017; Keeley, 2009; Marcisz et al., 2017; Ohlson, 2012). Although there is no consensus on how  
43  
44 resistant soil charcoal particles are to fragmentation over millennia in different biogeographical  
45  
46 settings, and the dispersal of airborne charcoal particles is somewhat difficult to assess, it is clear that  
47  
48 charcoal provide evidence on fire occurrence in the past (de Lafontaine and Asselin, 2011; Ohlson,  
49  
50 2012; Oris et al., 2014; Patterson et al., 1987). Compared to fire-scars, the temporal resolution of  
51  
52 sedimentary charcoal is relatively poor, due to the uncertainty associated with the dating methods and  
53  
54 natural sedimentation processes. Additionally, evidence indicates that charcoal can be absent from  
55  
56 the sediments during times of known forest fires (Ohlson, 2012; Ohlson and Tryterud, 2000), which  
57  
58  
59  
60

1  
2  
3 leads to problems in evaluating the fire occurrence or characteristics based on the charcoal record  
4  
5 alone.  
6  
7

8  
9 Several authors have attempted to correlate different fire proxies such as fire-scars and  
10 sedimentary charcoal for obtaining a more complete picture of the long-term fire occurrence (Brossier  
11 et al., 2014; Higuera et al., 2005; Remy et al., 2018), but only a few of them have been successful.  
12  
13 Higuera et al. (2005) studied the calibration of fire scars and sedimentary charcoal from a small forest  
14 hollow (<0.1 ha wet depression in the forest) and concluded that the fire detection from sedimentary  
15 charcoal depends strongly on fire severity and that the fine-scale spatial patterns of lower-severity  
16 burns play an essential role in determining the charcoal signal of these events. An additional  
17 discrepancy between these two proxies stems from differences in their origins: sedimentary charcoal  
18 is produced during medium to high-intensity fires at temperatures between 280 and 500 °C (Whitlock  
19 and Larsen, 2001), whereas the formation of fire scars requires that some of the trees survive and are  
20 hence usually formed after low-intensity (surface) fires (Gill, 1974). Characterization of the fire  
21 regime and its changes is thus dependent on the fire regime, and the methods applied, and integration  
22 of different proxies to a more reliable composite data set would significantly increase our  
23 understanding of the long-term fire history of the boreal forest.  
24  
25  
26  
27  
28  
29  
30  
31  
32  
33  
34  
35  
36  
37  
38  
39  
40

41 Traces for the presence of pyrophilous fungal species (i.e., species whose growth depends  
42 on fire) activity could potentially serve as another proxy for wildfire events. The formation of  
43 “blossoms” on charred wood after a fire is well-known characteristic of some species of moulds.  
44  
45 These include the *Neurospora* spp., which is a mould known to grow on charred tree and shrub bark  
46 after a fire and thus could potentially serve as another fire proxy (Jacobson et al., 2004, 2006; Kuo et  
47 al., 2014; Luque et al., 2012). Ascospores of *Neurospora* remain dormant until exposed to moist heat  
48 above 65° C, i.e. temperatures that in the boreal forests only occur during fires (Perkins et al., 1975).  
49  
50 After a fire ascospores of the *Neurospora* germinate and form characteristic “orange bloom” on the  
51  
52  
53  
54  
55  
56  
57  
58  
59  
60 black, charred tree trunks.

1  
2  
3 Here, we use composite data sets to estimate fire-event frequencies and return intervals over  
4 the Holocene in the boreal forest of northern Europe. In comparison with earlier studies that have  
5 employed two proxies (fire-scars and sedimentary charcoal; e.g., Higuera et al., 2005; Remy et al.,  
6 2018), we take one step further, and use three independent fire-event indicating proxies: fire-scars,  
7 sedimentary charcoal and *Neurospora* from small forest hollows. We specifically select small forest  
8 hollows under a closed tree canopy to reveal local fire-events. Studied time includes both periods of  
9 natural conditions and anthropogenic impacts on fire-event dynamics in the European boreal forest.  
10 We propose an approach for linking fire-scar and sedimentary fire proxies that is applicable to other  
11 similar studies.  
12  
13  
14  
15  
16  
17  
18  
19  
20  
21  
22  
23  
24  
25  
26

## 27 **Material and methods**

### 28 *Study area*

29  
30 The study sites are located in the boreal forest of Fennoscandia and the taiga forest in north-western  
31 Russia (Fig. 1). All study sites are small forest hollows within closed-canopy forest stands. Polttiais  
32 hollow (unofficial name; 1x1 m; N62°16'33", E36°45'3") is located in the Vodlozersky National  
33 Park western Russia and is surrounded mainly by stands of Scots pine (*Pinus sylvestris*) and birch  
34 (*Betula* sp.). Mean annual temperature is 3.4°C (17.6°C in July, and -9.9°C in February), and the  
35 annual precipitation sum 660 mm (mean data 1981–2010, from the nearest city Vytegra; Peterson and  
36 Vose, 1997). Naava hollow (unofficial name; 15x20 m; N61°14'29", E25°3'22") and Kämmekkä  
37 hollow (unofficial name; 10x20 m; N61°14'33", E25°3'19") are located 90 m from each other in  
38 southern Finland. Both Kämmekkä and Naava hollow are surrounded by spruce dominated forest,  
39 situated within a protected area of old-growth forest. The forest cover consists mainly of old-growth  
40 mixed stands of Norway spruce (*Picea abies*) and deciduous species such as birch, aspen (*Populus*  
41 *tremula*) and alder (*Alnus glutinosa* and *Alnus incana*), and occasional large individuals of Scots pine.  
42  
43  
44  
45  
46  
47  
48  
49  
50  
51  
52  
53  
54  
55  
56  
57  
58  
59  
60

1  
2  
3 The mean annual temperature is around 4 °C (16.5 °C in July, and -7 °C in February), and the mean  
4  
5 annual precipitation is 645 mm (Pirinen et al., 2012).  
6  
7  
8  
9

### 10 11 *Sediment sampling* 12

13  
14 Fieldwork was conducted in August-October 2015. We extracted a 125 cm long core from Kämmeikkä  
15  
16 hollow, a 127 cm long core from Naava hollow and a 143 cm long core from Polttiais hollow, using  
17  
18 a Russian peat sampler. We examined the cores in the field for visible charcoal layers, placed them  
19  
20 in PVC semi-tubes, and wrapped in plastic. After fieldwork, the samples were stored in a cold room  
21  
22 (air temperature of 4–5° C) for further analysis.  
23  
24  
25  
26  
27  
28

### 29 *Sediment dating and age-depth models* 30

31  
32 All cores were dated using accelerator mass spectrometry <sup>14</sup>C dating (<sup>14</sup>C AMS), in Poznań, Poland  
33  
34 (Table 1). All <sup>14</sup>C dates were calibrated using the IntCal13 calibration dataset (Reimer et al., 2013)  
35  
36 with a two  $\sigma$  (95.4%) confidence level, and the age-depth models of each sequence were developed  
37  
38 using Bacon 2.2 package (Blaauw and Christen, 2011), in the R environment (R Core Team, 2014).  
39  
40 In addition, we used a biostratigraphic correlation to define the lowermost age of Kämmeikkä hollow,  
41  
42 based on Naava hollow and *Picea* expansion in southern Finland (Table 1; Seppä et al., 2009a;  
43  
44 Stivrins et al., 2017).  
45  
46  
47  
48  
49  
50  
51

### 52 *Sediment analyses* 53

54  
55 We analysed consecutive 1-cm samples for sedimentary charcoal and non-pollen palynomorphs from  
56  
57 Kämmeikkä, Naava and Polttiais hollows. We extracted a record of sedimentary charcoal and  
58  
59  
60



1  
2  
3 categorized them according to size: 1) microscopic charcoal (20–150  $\mu\text{m}$ ), 2) macroscopic charcoal  
4 (>150  $\mu\text{m}$ –1 mm), and 3) large charcoal pieces (>1 mm).  
5  
6  
7

8 *Microscopic charcoal* was counted from the pollen slides. These particles are in the range  
9 from 20–150  $\mu\text{m}$ , but commonly 20–80  $\mu\text{m}$  in size due to pollen preparation method which involves  
10 centrifuge usage that can break larger charcoal fragments into smaller pieces. We prepared each  
11 sample (volume 1  $\text{cm}^3$ , thickness 1 cm), using common pollen preparation procedures (HCl 10%,  
12 HOK 10%, acetolysis 3 min, mounted in glycerol; Berglund and Ralska-Jasiewiczowa, 1986). We  
13 added known quantities of *Lycopodium* spores to each sample to allow calculation of charcoal  
14 concentrations (Stockmarr, 1971), and counted microscopic charcoal particles according to Finsinger  
15 et al. (2008).  
16  
17  
18  
19  
20  
21  
22  
23  
24  
25  
26

27 *Macroscopic charcoal* analysis was used to estimate the concentration of charcoal pieces  
28 >150  $\mu\text{m}$  in size in each sample. For this, we treated each sediment sample (volume 1  $\text{cm}^3$ , thickness  
29 1 cm) with dilute NaOCI to promote sediment bleaching and disaggregation before sieving at 150  
30  $\mu\text{m}$ . The sediment residue was added to 20 ml distilled water and decanted to a petri dish for charcoal  
31 analysis. Charcoal was identified as brittle, black crystalline particles with angular broken edges using  
32 a stereomicroscope at 30–60x magnification, (Swain, 1973).  
33  
34  
35  
36  
37  
38  
39  
40  
41

42 *Large charcoal pieces* >1 mm in size were recorded during plant macrofossil analysis, which  
43 followed the procedure described by Gałka et al. (2017). Sediment samples (volume 3  $\text{cm}^3$ ) were wet-  
44 sieved and analysed using a Nikon SMZ800 stereoscopic microscope at magnifications of 10–200  
45 and a transmitted light microscope.  
46  
47  
48  
49  
50

51 Finally, we identified and counted the *Neurospora* (HdV-55c in size 22–28x15–18  $\mu\text{m}$ ; with  
52 a grooved surface with longitudinal ribs; Miola, 2012; Shear and Dodge, 1927; van Geel, 1978) and  
53 *Gelasinospora* (HdV-1, HdV-2, HdV-528 in size ca 22–33x14–20  $\mu\text{m}$ ; with a pitted wall; Dowding,  
54 1933; van Geel, 1972, 1978) ascospores from the pollen slides. Based on molecular methods  
55  
56  
57  
58  
59  
60

1  
2  
3 *Gelasinospora* and *Neurospora* species were treated as a synonym of *Neurospora* genus within the  
4 order *Sordariales* (Dettman et al., 2001; García et al., 2004). Hence, identified spores of  
5  
6 *Gelasinospora* and *Neurospora* were merged and treated as *Neurospora* spp.  
7  
8  
9

#### 10 11 12 13 *Fire dates from scarred trees*

14  
15  
16 We sampled fire scars at the Polttiais hollow site in August 2015, at the same time when sediment  
17 samples were taken. For this, we searched the vicinity of Polttiais hollow for fire-scarred trees, at  
18 approx. 100 m radius around the hollow, but so that we remained in the same stand in which the  
19 hollow was located. When encountered, we extracted a partial stem disk that contained the tip of the  
20 fire scar for dating the year of fire. In the lab, samples were dried and sanded to fine grit (600). We  
21 visually cross-dated the year of fire under a microscope, using marker rings (Yamaguchi, 1991) from  
22 samples obtained from live trees in the same stand.  
23  
24  
25  
26  
27  
28  
29  
30  
31  
32

33 For the Naava and Kämmeikkä hollow, we used the fire dates from Tuominen (1990). Based  
34 on this data, fires occurred in 1773, 1827, 1857, and 1886. Fires have been absent from the stand  
35 since 1886. These fire dates were originally obtained from tree ring samples from 18 fire scarred  
36 pines in the study stand, by inspecting the changes in tree growth rates typically associated with  
37 surface fires as described by Mikola (1950).  
38  
39  
40  
41  
42  
43  
44  
45  
46  
47

#### 48 *Data analyses*

49  
50  
51 We used CharAnalysis (CHAR; Higuera et al., 2009), to identify fire events from the sedimentary  
52 charcoal record. This analysis is based on the charcoal peak screening process (Gavin et al., 2006),  
53 in which a threshold value is used to separate the background charcoal deposition (noise) from the  
54 occurrence of peaks that are indicative of actual fire events. CharAnalysis was originally designed  
55  
56  
57  
58  
59  
60

1  
2  
3 for the analysis of lake sediments, and hence we adjusted the procedure for using it for small forest  
4 hollow data (see Supplementary material 1). CharAnalysis was used for screening the macroscopic  
5 and microscopic charcoal, whereas the observations of *Neurospora* and large charcoal pieces were  
6  
7  
8  
9  
10 treated as a dichotomous fire indicator.

11  
12  
13 For assessing the usefulness of *Neurospora* as a fire indicator, we tested its connection with  
14 other fire indicators (fire scars, macro- and microcharcoal) using a permutation test. In the test, we  
15 used the number of samples (slices) where *Neurospora* and other indicators were observed as our test  
16  
17  
18  
19  
20  
21  
22  
23  
24  
25  
26  
27  
28  
29  
30  
31  
32  
33  
34  
35  
36  
37  
38  
39  
40  
41  
42  
43  
44  
45  
46  
47  
48  
49  
50  
51  
52  
53  
54  
55  
56  
57  
58  
59  
60

For assessing the usefulness of *Neurospora* as a fire indicator, we tested its connection with other fire indicators (fire scars, macro- and microcharcoal) using a permutation test. In the test, we used the number of samples (slices) where *Neurospora* and other indicators were observed as our test statistic. As the slicing of the sediment core may cause different indicators to be in separate slices even if they indicate the same fire-event, *Neurospora* and charcoal were considered to match if they were in the same or in the neighboring samples. We assigned the fire scar-based fire events into a sediment sample whose dating appears to match it the best. In the permutations, *Neurospora* observations were randomly assigned to sediment samples (slices). The *p*-value was obtained as the proportion of matches that were at least as high as those obtained in the random permutations. We conducted the test separately for each sequence and by pooling the area-wise test statistics together. Furthermore, we examined whether the existence of charcoal in a sample increased the probability of observing *Neurospora*. This was estimated as the risk ratio *RR*:

$$RR = \frac{c}{N}, \text{ where}$$

*c* is proportion of slices with *Neurospora* among a sample with charcoal in the same or neighboring sample, and *N* is the proportion of slices with *Neurospora* among samples without another fire indicator in the same or neighboring sample

Risk ratio above one indicates that *Neurospora* was observed more often when another fire indicator is present than when another fire indicator was absent. The confidence intervals of the risk ratio were calculated using the function *riskratio* in package *fmsb* of R software.

1  
2  
3 While combining the three separate fire indicators into a composite indicator, a sample was  
4 considered as a “fire sample” if at least one proxy indicated a fire. Using CharAnalysis, we then  
5 estimated fire frequencies, as well as the mean and median fire return (mFRI) intervals. Usually (and  
6 as implemented in the CharAnalysis software), the confidence intervals for the mFRI are obtained,  
7 using bootstrapping. However, as these intervals omit the effect of timing uncertainty which is  
8 available from the Bayesian age-depth model, we augmented the computation of confidence intervals  
9 by considering both the sampling distribution of the mean fire return interval and the timing  
10 uncertainty. To quantify and compare these two sources of uncertainty, we also report the uncertainty  
11 intervals obtained only considering the timing uncertainty and the bootstrap intervals without the  
12 timing uncertainty.  
13  
14  
15  
16  
17  
18  
19  
20  
21  
22  
23  
24  
25

26 While computing the time-varying fire frequency, CharAnalysis sums the total number of  
27 fires within a 1000-yr period and smooths the obtained series with a Lowess smoother. Preliminary  
28 analyses showed that Naava, Kämmeikkä and Polttiais sediment sequences all had higher  
29 sedimentation rate towards the present day. The topmost section of sediment sequence was formed  
30 mainly of moss peat matrix that was less decomposed and not suppressed as subsequent lowermost  
31 sediment layers (similarly to bogs). As a result, the sampling density was considerably higher during  
32 the last 200 years (sediment is less compacted at the top – higher temporal resolution than for  
33 lowermost sediment), and we therefore binned the samples into 120-year bins that correspond to the  
34 smallest of the 95% quantiles of the sampling resolution over the period. We show the timing  
35 uncertainty also in the fire frequency estimates in the form of highest posterior density intervals.  
36  
37  
38  
39  
40  
41  
42  
43  
44  
45  
46  
47  
48  
49  
50  
51  
52

## 53 **Results**

### 54 *Sediment chronology*

55  
56  
57  
58  
59  
60

1  
2  
3 Age-depth modelling of all three sediment sequences reveal overall superposition sedimentation. Few  
4  
5 samples were excluded from the age-depth models as they indicated outliers (Table 1). Because plant  
6  
7 remains for AMS  $^{14}\text{C}$  dating were not available throughout the sediment sequences, several bulk peat  
8  
9 samples were dated. A bulk sample consists of a mixture of terrestrial plant remains and tend to be  
10  
11 slightly older than the date of plant macrofossil. These differences may arise due to a composition of  
12  
13 the bulk sample (e.g. roots, fungi, humic acids), trampling of animals or change in peat decomposition  
14  
15 rate (see for example Väiliranta et al., 2014). Hence, establishing a chronology of small forest hollow  
16  
17 is somewhat challenging as possible hiatus, and non-linear sedimentation may occur.  
18  
19  
20  
21

22 The chronology for the basal section of Kämmeikkä hollow was established based on the rise  
23  
24 of spruce (*Picea*) pollen values, as the AMS  $^{14}\text{C}$  date of wood was an outlier (too young age).  
25  
26 According to the Naava hollow pollen data (Stivrins et al., 2017), and general knowledge of spruce  
27  
28 migration into Finland (Seppä et al., 2009a), the appearance of spruce 4800 years ago be used as a  
29  
30 biostratigraphic marker. Considering the proximity of Naava hollow, we adjusted the basal age of  
31  
32 Kämmeikkä hollow according to this biostratigraphic marker. An example of circumstances that result  
33  
34 in younger-than-expected wood remains is the fall of a tree branch that penetrates into an older  
35  
36 sediment section. Except for this younger piece of wood, we found no signs of significant disturbance  
37  
38 in sediment or the pollen spectra (Stivrins et al., 2017).  
39  
40  
41  
42  
43  
44  
45  
46  
47

#### 48 *Tree-ring and sedimentary data of fire events*

49 The tree-ring record from the stand surrounding Polttiais hollow indicated four fires: 1654, 1734,  
50  
51 1914 and 1949. While the number of fires from tree rings was the same for both Finnish and  
52  
53 Russian sites, their spread in time was very different (the record from Tuominen (1990) showing  
54  
55 fires for Naava and Kämmeikkä hollows in 1773, 1827, 1857, and 1886).  
56  
57  
58  
59  
60

1  
2  
3 All sediment sequences contained charcoal (microscopic to large charcoal pieces) which  
4  
5 were further analysed individually and combined into a composite dataset (Figure 3). Interestingly,  
6  
7 we observed several samples with macrocharcoal pieces in size of >1 mm but no significant  
8  
9 microcharcoal (20–150 µm) values and *vice versa*.

#### 15 16 *The connection between Neurospora and other fire indicators*

17  
18 *Neurospora* abundance in samples was low and did not exceed eight spores per sample. In Kämmeikkä  
19  
20 hollow, nine out of eleven, Polttiais hollow six out of seven and in Naava hollow 18 out of 19  
21  
22 *Neurospora* observations were in the same or neighboring slice with another fire indicator. The  
23  
24 permutation test yielded *p*-values 0.16 for Kämmeikkä, 0.21 for Polttiais and 0.09 for Naava, whereas  
25  
26 the *p*-value for pooled data was 0.01. Hence, even though the connection was not significant in  
27  
28 separately analysed sequences, a statistically significant connection was found when all the sequences  
29  
30 were pooled together.  
31  
32  
33

34  
35 The risk ratios for Kämmeikkä hollow was 3.5 (95% confidence interval (CI) 0.8–15.5), for  
36  
37 Polttiais hollow 3.4 (CI 0.4–27.7) and Naava hollow 5.3 (CI 0.7–38.2) and when combining all the  
38  
39 areas, the risk ratio was 4.3 (CI 1.5–11.8). All the risk ratios were well above one (3.4–5.3), but the  
40  
41 confidence intervals were wide, and above one only for the pooled data.  
42  
43  
44  
45  
46  
47

#### 48 *Composite data for fire-event reconstructions*

49  
50 We used the composite of fire proxies (Figure 3) to compute the fire return intervals (FRI) (Table 2).  
51  
52 The median FRIs were smaller than the mean FRIs indicating a skewed distribution of FRIs. In  
53  
54 addition, it appeared that the uncertainty related to the sampling distribution was more significant  
55  
56 than the uncertainty related to the timing.  
57  
58  
59  
60

1  
2  
3 The composite fire record from Polttiais hollow in western Russia showed that the fire  
4 frequency was lower 11–8 ka years ago but increased 8–4 ka years ago (Figure 4). Fire frequency  
5 slightly decreased 4–2 ka years ago but increased substantially over the last 1000 years. In Finland,  
6 the fire return interval was lower in Kämmeikkä hollow from 6.5 to 4 ka years ago and increased from  
7 two to seven fires per 1000 years in a period from 4 to 1.5 ka years ago. Fire frequency decreased  
8 from 1.5 ka to 600 years ago followed by an abrupt rise up to nine fires per 1000 years towards the  
9 present day. Naava hollow had on average four to five fire events per 1000 years 7.5 to 4 ka years  
10 ago, with a slight decrease 3–2 ka years ago and distinct increase in fire frequency afterwards,  
11 particularly over the last 600 years. A common feature in all fire reconstructions was the abrupt  
12 increase in fire frequency over the last 1000 to 500 years.  
13  
14  
15  
16  
17  
18  
19  
20  
21  
22  
23  
24  
25  
26  
27  
28  
29

## 30 Discussion

### 31 *Proxies of fire*

32  
33 Prior to further exploration of the results and their interpretation, it is necessary to discuss the validity  
34 and strength of proxies used in fire reconstructions. In palaeoecology, sedimentary charcoal has been  
35 used in numerous publications, but to a lesser extent as a compilation of different size categories.  
36 Empirical studies show that larger charcoal particles ( $>150\ \mu\text{m}$ ) fall out relatively close to its emission  
37 source ( $<100\ \text{m}$ ), and smaller particles ( $20\text{--}150\ \mu\text{m}$ ) can be windblown from a broader region ( $>100$   
38 m) (Clark and Patterson, 1997; Conedera et al., 2009; Whitlock and Larsen, 2001). Recently, Adolf  
39 et al. (2018) provided the first European-scale geospatial training set relating the charcoal signal in  
40 surface lake sediments to fire parameters recorded by moderate satellite resolution imaging  
41 spectroradiometer sensors. According to these findings, the source area for both microscopic and  
42 macroscopic charcoal particles is very similar and can regionally be 40 km in diameter. However,  
43 these results were obtained from somewhat open European vegetation conditions and lakes. In the  
44  
45  
46  
47  
48  
49  
50  
51  
52  
53  
54  
55  
56  
57  
58  
59  
60

1  
2  
3 current study, only small (< 0.1 ha) forest hollows from densely forested conditions were analysed  
4  
5 with a closed forest canopy. It is difficult to assess the source area of the smallest charcoal particles  
6  
7 as they can spread over long distance in the air, but considering that for pollen, the source area in  
8  
9 forest hollow usually is limited to 100 m (Overballe-Petersen and Bradshaw, 2011), it seems likely  
10  
11 that also the sedimentary charcoal from such depository might reflect local fire events. Small-scale  
12  
13 variability in fire occurrence can be seen from our results where two nearby hollows Naava and  
14  
15 Kämmeikkä (located 90 m apart) did not record the same fire events. Nevertheless, as noted by Remy  
16  
17 et al. (2018) and Pitkänen et al. (2001), fire events detected from terrestrial sedimentary environments  
18  
19 are more spatially and temporally precise and robust than those detected from lake sediments.  
20  
21  
22  
23

24  
25 The spatial and temporal precision of the fire record is not an issue for fire scar-based  
26  
27 reconstructions. Trees record fires at specific locations and, when cross-dated, at an annual resolution.  
28  
29 However, compared to the sediments, the time span of the tree-ring-based fire record is in most cases  
30  
31 more limited rarely dating back more than the last several centuries (but see Wallenius et al., 2010).  
32  
33 This time limitation is generally due to the short life span of the tree species, and the disappearance  
34  
35 of fire scars with advancing decomposition following tree death. In addition, also fire scar-based  
36  
37 reconstructions may suffer from imperfect detection, depending on the fire regime. In high-intensity  
38  
39 fires all trees may be killed, leaving no fire scar record. In such instances, fires can still be deduced  
40  
41 from tree age structures (Dansereau and Bergeron, 1993), but this information gradually disappears  
42  
43 as post-fire age cohorts die. On the other hand, low-intensity fires may pass through a forest without  
44  
45 leaving a scar (Piha et al., 2013), as large fire-adapted trees can sustain low-intensity fires without  
46  
47 being damaged. In such a case, fires could locally produce charcoal and/or raise temperatures enough  
48  
49 to induce growth of pyrolytic fungi (such as the *Neurospora* spp.), producing evidence of fire that is  
50  
51 visible only in the sediment data.  
52  
53  
54  
55

56  
57 In the field of non-pollen palynomorphs, ascospores of *Neurospora* (HdV-55c; with  
58  
59 longitudinal ribs) and *Gelasinospora* (HdV-1, HdV-2, HdV-528; pitted spores) are usually counted



1  
2  
3 separately. However, genetic data suggest, that these two genera of Sordariaceae family should be  
4  
5 united (Dettman et al., 2001; García et al., 2004). In a palaeoecological context, ascospores of  
6  
7 *Gelasinospora* found in sediments have been associated with fires when found in sediment layers  
8  
9 containing charcoal (Dietre et al., 2017; Kuhry, 1985, 1997; van Geel, 1978), or during dry conditions  
10  
11 (van Geel, 1972). Likewise, *Neurospora* (HdV-55c) ascospores in palaeoecology are associated with  
12  
13 fires, as they have been found in charred sediment layers (van Geel, 1978). The palaeoecological  
14  
15 context of these ascospores usually refer to bog sediment sequences and thus far have not been used  
16  
17 as a forest fire proxy.  
18  
19  
20  
21

22  
23 Most field collections of *Neurospora* species contain isolates from tropical and subtropical  
24  
25 regions, originating from either prescribed or natural fires. In general, natural populations of  
26  
27 *Neurospora* often occur where fires are an essential part of the ecosystem (Perkins et al., 1975). The  
28  
29 ascospores do not germinate under ambient temperatures, but they do germinate after being exposed  
30  
31 to moist heat at 65–70° C for a few minutes. Therefore, for comparatively long time *Neurospora* spp.  
32  
33 were thought to belong only to moist tropical and subtropical regions, but more recent literature has  
34  
35 made it clear that particular species are common primary colonizers of trees and shrubs after the forest  
36  
37 fires also in North America and Europe (Jacobson et al., 2006; Luque et al., 2012). In particular, Kuo  
38  
39 et al. (2014) showed that *Neurospora* spp. can grow as a symbiont (endophyte) within Scots pine,  
40  
41 rapidly shifting to a parasitic or saprophytic lifestyle following a fire. Moreover, *Neurospora* spp.  
42  
43 ascospores were not detectable in the soil after wildfire (in samples taken after wildfire from  
44  
45 Indonesia and Finland), rather *Neurospora* spp. survive the wildfire within the tree trunk (Kuo et al.,  
46  
47  
48  
49  
50  
51  
52  
53  
54  
55  
56  
57  
58  
59  
60  
2014).

52  
53 Typical “orange bloom” developing on the charred tree trunks consists mainly of conidia  
54  
55 containing conidium spores – micro and macro conidiospores with a typical size of 3 µm × 4 µm and  
56  
57 5 µm × 9 µm respectively (Lee, 2012; Maheswari et al., 1999). In contrast to the ascospores, increased  
58  
59 heat is not necessary for conidiospores to develop (Maheswari et al., 1999). In our samples, none of  
60

1  
2  
3 the particles detected corresponded to a size characteristic to the conidium spores, only ascospores  
4  
5 with their characteristic surface morphology (ribbed or pitted) and size 20–30  $\mu\text{m}$ . All in all, the use  
6  
7 of *Neurospora spp.* as a fire proxy requires a completion of a full life cycle, starting with germination  
8  
9 of ascospore initiated by heat, continued by the formation and development of perithecium, and  
10  
11 culminating in the maturation of new asci that produce significant amounts of ascospores.  
12  
13

14  
15 Compared to the use of charcoal as a fire proxy, *Neurospora spp.* has the additional  
16  
17 advantage that it can potentially be used to constrain the season of fire occurrence. The minimum  
18  
19 temperature for *Neurospora spp.* development from the germinated ascospores is 4°C (Dix and  
20  
21 Webster, 1995). In laboratory settings, the development of perithecium, generation of asci and spore  
22  
23 maturation has taken approximately one month. It is likely that in a forest setting this process takes  
24  
25 an even longer time (Lee, 2012). Therefore, hypothetically, if a wildfire has occurred in the boreal  
26  
27 forest during late autumn/winter time, it is most likely that no *Neurospora spp.* perithecium will  
28  
29 develop even if the heat treatment from a wildfire was present, leaving no trace from such late season  
30  
31 fires. Hence, findings of *Neurospora spp.* indicate fires occurring during spring/summer.  
32  
33  
34  
35  
36  
37  
38

#### 39 *Fire-events in the Northern Europe Boreal forest*

40  
41  
42 For the period for which we had data for fire proxies, *Neurospora* was linked with the two other,  
43  
44 well-known proxies. Based on this relationship and the autecology of this fungus (i.e., its dependence  
45  
46 on high temperatures), we suggest that integrating these different proxies complements the fire record  
47  
48 and helps to improve our understanding of fire occurrence in the boreal forest. The fire history  
49  
50 reconstructions developed here indicated that, on average, the fire occurred every 126 to 237 years  
51  
52 (median 52 to 137 years) in these studied forests (Table 2).  
53  
54  
55

56  
57 Analyzed separately, the mean and median fire return intervals in the Polttiais hollow in  
58  
59 western Russia were 237 and 137 years over the last 11 ka years. For the Finnish sites, the mean fire  
60

1  
2  
3 return intervals were 126–143. These long-term estimates of fire return interval are within the range  
4  
5 for modern boreal forest fire intervals of 50–200 years (Bonan and Shugart, 1989), but shorter than  
6  
7 many previous long-term fire history reconstructions from these regions indicate (Pitkänen et al.,  
8  
9 2002). For example, Kuosmanen et al. (2014) used microscopic charcoal particles to study the effect  
10  
11 of local fire on the forest in western Russia (in the same region as Polttiais hollow; Fig.1) and  
12  
13 suggested relatively few fire events, or even an absence of local fires during the Holocene (last ca 12  
14  
15 ka years), depending on the site. In a similar study, Clear et al. (2013) used macroscopic charcoal  
16  
17 data from the small forest hollow to study the fire frequency variability in Vesijako, Finland. The  
18  
19 mean fire frequency was estimated as 430 years in semi-natural conditions (5–2 ka years ago), 180  
20  
21 years during anthropogenic influence (2 ka to 750 years ago) and no fires over the last 750 years  
22  
23 (Clear et al., 2013). In fire-scar based reconstruction, Wallenius et al. (2007) estimated a 50-year fire  
24  
25 interval for the 17<sup>th</sup> and 18<sup>th</sup> century for the region, before the cessation of fires in the mid-19<sup>th</sup>  
26  
27 century.  
28  
29  
30  
31  
32

33  
34 Variability of the fire return interval can be partly explained by the substantial changes in  
35  
36 climate over the entire Holocene, and changes in human impact especially in the more recent past.  
37  
38 During the 11.7–8.2 ka years ago, air temperatures were lower than present in western Russia and  
39  
40 Finland (Kuosmanen et al., 2016). The warmest period appeared within the 8.2–4.2 ka years ago and  
41  
42 during the last 4.2 ka years temperatures decreased gradually (Seppä et al., 2009b). However, while  
43  
44 analyses on fire-climate relationships often rely on temperature reconstructions as the primary driver  
45  
46 of the forest dynamics (Kuosmanen et al., 2016), the use of recently accomplished precipitation  
47  
48 reconstructions have shown that concomitant decreases in precipitation may induce increased fire  
49  
50 occurrence during colder time periods in the European boreal forest (Aakala et al., 2018). This makes  
51  
52 explaining changes in fire frequency as a function of climate variability less straightforward.  
53  
54  
55

56  
57 A much stronger signal in the fire record was the increased fire frequency in the last ca 1000  
58  
59 years that is likely linked to increased human activities. While the timing and the intensity of changes  
60

1  
2  
3 in human activities have differed between the study regions, both have been subjected to similar fire-  
4  
5 conducive human impact in the past (Tikkanen and Chernyakova, 2014; Wallenius, 2011). These  
6  
7 have included slash-and-burn agriculture which has been an active use of fire to alter the landscape,  
8  
9 but also probably unintentionally from other human activities such as fire spread from hunters'  
10  
11 campfires. Huttunen (1980) notes that the Evo region, where Naava and Kämmeikkä hollows are  
12  
13 located, comprises only 1–2% arable land and slash and burn cultivation with the clearing of forest  
14  
15 for agricultural purposes was carried out rarely, whereas around 20 km towards the south at Lammi,  
16  
17 the land becomes more fertile and as such more suitable for cultivation. In line with this, Stivrins et  
18  
19 al. (2017) showed that the first crop pollen indicating agricultural practices appeared only 400 years  
20  
21 ago at Naava and Kämmeikkä hollow, while in other areas of Finland, an intensification of slash and  
22  
23 burn activity can be seen in the charcoal records after 1000 cal yr BP due to the expansion of  
24  
25 cultivation and establishment of more permanent settlements (Alenius et al., 2013; Lagerås, 1996;  
26  
27 Taavitsainen et al., 1998).

28  
29  
30  
31  
32  
33 Earlier studies have demonstrated that using various charcoal size categories with a  
34  
35 combination of fire-scar data may aid in gaining more comprehensive information about the  
36  
37 occurrence of forest fires. However, we suggest that including *Neurospora* as a complementary proxy  
38  
39 for fire reconstructions can further improve our understanding of fire occurrence. An additional  
40  
41 advantage of *Neurospora* is that the germination and spread of their spores occurs over more extended  
42  
43 time (e.g. days to weeks) compared to charcoal production during a fire event and are hence less  
44  
45 dependent on short-term weather (particularly wind) conditions, increasing the probability of  
46  
47 detection from sediments. Using multiple types of evidence for tracking past fires still need more  
48  
49 experimental studies to understand the strengths and weaknesses of these different fire proxies.  
50  
51  
52  
53  
54  
55  
56  
57

## 58 **Conclusions**

59  
60

1  
2  
3 In this study, we presented a novel approach for past fire event reconstruction. We utilized three types  
4 of independent fire proxies – fire scar, charcoal and fungal spore of *Neurospora* spp. – to create a  
5 composite data set that was statistically analysed and used to reconstruct fire events in two study areas  
6 in the boreal forest. While each proxy has its strengths and weaknesses that require further research,  
7 our findings suggest that adding an additional complementary proxy (here: the spores of *Neurospora*  
8 spp.) complements the fire record, suggesting that fire reconstructions based on singly proxy  
9 technique may provide underestimates about past fire activity.  
10  
11  
12  
13  
14  
15  
16  
17  
18  
19  
20  
21  
22

### 23 **Acknowledgements**

24  
25 We would like to thank the referees.  
26  
27

### 28 **Funding**

29  
30 The research was funded by the Academy of Finland (Proj. nos. 276255, 252629, and 275969), by  
31 the Kone Foundation. Additional support was provided by the University of Latvia project “Studies  
32 of the fire impact on the bog environment and recovery” with partners JSC “Latvia’s State Forests”,  
33 The Nature Conservation Agency and Latvian Peat Association, the Latvian Council of Science  
34 project No. LZP-2018/1-0171, National basic funding for science Y5-AZ03-ZF-N-110 and the  
35 Estonian Research Council grants IUT1-8 and PRG323.  
36  
37  
38  
39  
40  
41  
42  
43  
44  
45  
46  
47  
48

### 49 **References**

50  
51 Aakala T (2018) Forest fire histories and tree age structures in Värriö and Maltio Strict Nature  
52 Reserves, northern Finland. *Boreal Environment Research* 23: 209–219.  
53  
54  
55  
56  
57  
58  
59  
60

- 1  
2  
3 Aakala T, Pasanen L, Helama S et al. (2018) Multiscale variation in drought controlled historical  
4 forest fire activity in the boreal forests of eastern Fennoscandia. *Ecological Monographs*  
5 88: 74–91.  
6  
7  
8  
9  
10 Adolf C, Wunderle S, Colombaroli D et al. (2018) The sedimentary and remote-sensing reflection of  
11 biomass burning in Europe. *Global Ecology and Biogeography* 27: 199–212.  
12  
13  
14 Alenius T, Mökkönen T and Lahelma A (2012) Early farming in the northern Boreal zone: reassessing  
15 the history of land use in southeastern Finland through high-resolution pollen analysis.  
16  
17  
18  
19  
20  
21  
22  
23  
24  
25  
26  
27  
28  
29  
30  
31  
32  
33  
34  
35  
36  
37  
38  
39  
40  
41  
42  
43  
44  
45  
46  
47  
48  
49  
50  
51  
52  
53  
54  
55  
56  
57  
58  
59  
60
- Bergeron Y, Gauthier S, Flannigan M et al. (2004) Fire regimes at the transition between mixed wood and coniferous boreal forest in northwestern Quebec. *Ecology* 85: 1916–1932.
- Berglund BE and Ralska-Jasiewiczowa M (1986) Pollen analysis and pollen diagrams. In: Berglund B (ed.) *Handbook of Holocene Palaeoecology and Palaeohydrology*. New York: Wiley, pp. 455–484.
- Blaauw M and Christen A (2011) Flexible paleoclimate age-depth models using an autoregressive Gamma process. *Bayesian Analysis* 6: 457–474.
- Bonan GB, Shugart HH (1989) Environmental factors and ecological processes in boreal forests. *Annual Review of Ecology and Systematics* 20: 1–28.
- Brossier B, Oris F, Finsinger W et al. (2014) Using tree-ring records to calibrate peak detection in fire reconstructions based on sedimentary charcoal records. *The Holocene* 24: 635–645.
- Clark JS and Patterson WA (1997) Background and local charcoal in sediments: scales of fire evidence in the paleorecord. In: Clark JS, Cachier H, Goldammer JG and Stocks B, (Eds.) *Sediment Records of Biomass Burning and Global Change*. NATO ASI Series 1: Global Environmental Change, vol. 51, Springer, Berlin: 23-48.

- 1  
2  
3 Clear JL, Seppä H, Kuosmanen N et al. (2013) Holocene fire frequency variability in Vesijako, Strict  
4 Nature Reserve, Finland, and its application to conservation and management. *Biological*  
5 *Conservation* 166: 90–97.  
6  
7  
8  
9  
10 Clear JL, Seppä H, Kuosmanen N et al. (2015) Holocene stand-scale vegetation dynamics and fire  
11 history of an old-growth spruce forest in southern Finland. *Vegetation History and*  
12 *Archaeobotany* 24: 731–741.  
13  
14  
15  
16  
17 Conedera M, Tinner W, Neff C et al. (2009) Reconstructing past fire regimes: methods, applications,  
18 and relevance to fire management and conservation. *Quaternary Science Reviews* 28:  
19 435–456.  
20  
21  
22  
23  
24 Dansereau P-D and Bergeron Y (1993) Fire history in the southern boreal forest of northwestern  
25 Quebec. *Canadian Journal of Forest Research* 23: 25–32.  
26  
27  
28  
29 De Lafontaine G and Asselin H (2011) Soil charcoal stability over the Holocene across boreal  
30 northeastern North America. *Quaternary Research* 76: 196–200.  
31  
32  
33 Dettman JR, Harbinski F and Taylor JW (2001) Ascospore morphology is a poor predictor of the  
34 phylogenetic relationships of *Neurospora* and *Gelasinospora*. *Fungal Genetics and*  
35 *Biology* 34: 49–61.  
36  
37  
38  
39  
40 Dieterich, J.H., and Swetnam, T.W. 1984. Dendrochronology of a fire-scarred ponderosa pine. *Forest*  
41 *Science* 30: 238–247.  
42  
43  
44  
45 Dietre B, Walser C, Kofler W et al. (2017) Neolithic to Bronze Age (4850-3450 cal. BP) fire  
46 management of the Alpine Lower Engadine landscape (Switzerland) to establish pastures  
47 and cereal fields. *The Holocene* 27: 181-196.  
48  
49  
50  
51  
52 Dietze E, Theuerkauf M, Bloom K et al. (2018) Holocene fire activity during low-natural  
53 flammability periods reveals scale-dependent cultural human-fire relationships in Europe.  
54 *Quaternary Science Reviews* 201: 44–56.  
55  
56  
57  
58  
59  
60 Dix NJ and Webster J (1995) Fungal ecology. Chapman & Hall, pp 549.

- 1  
2  
3 Dowding ES (1933) *Gelasinospora*, a new genus of pyrenomycetes with pitted spores. *Canadian*  
4 *Journal Research* 9: 294–305.  
5  
6  
7  
8 Feurdean A, Veski S, Florescu G et al. (2017) Broadleaf deciduous forest counterbalanced the direct  
9 effect of climate on Holocene fire regime in hemiboreal/boreal region (NE Europe).  
10 *Quaternary Science Reviews* 169: 378–390.  
11  
12  
13  
14 Finsinger W, Tinner W and Hu FD (2008) Rapid and accurate estimates of microcharcoal content in  
15 pollen slides. In: Fiorentino G and Magri D (Eds.) *Charcoals From The Past. Cultural and*  
16 *Palaeoenvironmental Implications Proceedings of the Third International Meeting of*  
17 *Anthracology, Cavallino – Lecce (Italy) June 28<sup>th</sup> – July 1<sup>st</sup> 2004.* Oxford: Archaeopress,  
18 pp. 121–124.  
19  
20  
21  
22  
23  
24  
25  
26 Flannigan M (2015) Fire evolution split by continent. *Nature Geoscience* 8: 167–168.  
27  
28  
29 Gałka M, Tobolski K, Lamentowicz Ł et al. (2017) Unveiling exceptional Baltic bog ecohydrology,  
30 autogenic succession and climate change during the last 2000 years in CE Europe using  
31 replicate cores, multi-proxy data and functional traits of testate amoebae. *Quaternary*  
32 *Science Reviews* 156: 90–106.  
33  
34  
35  
36  
37 García D, Stchigel AM, Cano J et al. (2004) A synopsis and re-circumscription of *Neurospora* (syn.  
38 *Gelasinospora*) based on ultrastructural and 28S rDNA sequence data. *Mycological*  
39 *Research* 108: 1119–1142.  
40  
41  
42  
43  
44 Gavin DG, Hu FS, Lertzman K et al. (2006) Weak climatic control of stand-scale fire history during  
45 the Late Holocene. *Ecology* 87: 1722–1732.  
46  
47  
48  
49 Gill AM (1974) Toward an understanding of fire-scar formation: field observation and laboratory  
50 simulation. *Forest Science* 20:198–205.  
51  
52  
53  
54 Girardin MP, Ali AA, Carcaillet C et al. (2009) Heterogeneous response of circumboreal wildfire risk  
55 to climate change since the early 1900s. *Global Change Biology* 15: 2751–2769.  
56  
57  
58  
59  
60



- 1  
2  
3 Higuera P (2009) CharAnalysis 0.9: Diagnostic and analytical tools for sediment-charcoal analysis.  
4  
5 User's Guide, Montana State University, University of Illinois.  
6  
7  
8 Higuera PE, Sprugel DG and Brubaker LB (2005) Reconstructing fire regimes with charcoal from  
9  
10 small-hollow sediments: a calibration with tree-ring records of fire. *The Holocene* 15:  
11  
12 238–251.  
13  
14  
15 Huttunen P (1980) Early land use, especially the slash-and-burn cultivation in the commune of Lamni,  
16  
17 southern Finland, interpreted mainly using pollen and charcoal analyses. *Acta Botanica*  
18  
19 *Fennica* 113: 1–45.  
20  
21  
22 Jacobson DJ, Dettman JR, Adams RI et al. (2006) New findings of *Neurospora* in Europe and  
23  
24 comparisons of diversity in temperate climates on continental scales. *Mycologia* 98: 550–  
25  
26 559.  
27  
28  
29 Jacobson DJ, Powell AJ, Dettman JR et al. (2004) *Neurospora* in temperate forests of western North  
30  
31 America. *Mycologia* 96: 66–74.  
32  
33  
34 Keeley JE (2009) Fire intensity, fire severity and burn severity: a brief review and suggested usage.  
35  
36 *International Journal of Wildland Fire* 18: 116–126.  
37  
38  
39 Khabarov N, Krasovskii A and Obersteiner M (2016) Forest fires and adaption options in Europe.  
40  
41 *Regional Environmental Change* 16: 21–30.  
42  
43  
44 Kuhry P (1985) Transgressions of a raised bog across a coverstand ridge originally covered with an  
45  
46 oak-lime forest. *Review of Palaeobotany and Palynology* 44: 313–353.  
47  
48  
49 Kuhry P (1997) The palaeoecology of a treed bog in western boreal Canada: a study based on  
50  
51 microfossils, macrofossils and physico-chemical properties. *Review of Palaeobotany and*  
52  
53 *Palynology* 96: 182–224.  
54  
55  
56 Kuo H-C, Choi J, Asiegbu FO et al. (2014) Secret lifestyles of *Neurospora crassa*. *Scientific Reports*  
57  
58  
59  
60 4: 5135.

- 1  
2  
3 Kuosmanen N, Fang K, Bradshaw RHW et al. (2014) Role of forest fires in Holocene stand-scale  
4 dynamics in the unmanaged taiga forest of northwestern Russia. *The Holocene* 24: 1503–  
5 1514.  
6  
7  
8  
9  
10 Kuosmanen N, Seppä H, Reitalu T et al. (2016) Long-term forest composition and its drivers in taiga  
11 forest in NW Russia. *Vegetation History and Archaeobotany* 25: 221–236.  
12  
13  
14 Lagerås P (1996) Long-term history of land-use and vegetation at Femtingagölen – A small lake in  
15 the Småland Uplands, southern Sweden. *Vegetation History and Archaeobotany* 5: 215–  
16 228.  
17  
18  
19  
20  
21 Lankia H, Wallenius T, Várkonyi G et al. (2012) Forest fire history, aspen and goat willow in a  
22 Fennoscandian old-growth landscape: are current population structures a legacy of  
23 historical fires? *Journal of Vegetation Science* 23: 1159–1169.  
24  
25  
26  
27  
28 Lee K (2012) Asexual and sexual developments of *Neurospora crassa* on natural substrata. *Fungal*  
29 *Ecology*, 5: 223–229  
30  
31  
32  
33 Luque EM, Gutierrez G, Navarro-Sampedro L et al. (2012) A relationship between carotenoid  
34 accumulation and the distribution of species of the fungus *Neurospora* in Spain. *PLOS*  
35 *ONE* 7: e33658.  
36  
37  
38  
39  
40 Maheshwari R (1999) Microconidia of *Neurospora crassa*. *Fungal Genetics and Biology* 26: 1–18.  
41  
42  
43 Marcizs K, Gałka M, Pietrala P et al. (2017) Fire activity and hydrological dynamics in the past 5700  
44 years reconstructed from Sphagnum peatlands along the oceanic-continental climatic  
45 gradient in northern Poland. *Quaternary Science Reviews* 177: 145–157.  
46  
47  
48  
49 Mikola P (1950) On variations in tree growth and their significance to growth studies.  
50 *Communicationes Instituti Forestales Fenniae* 38: 1–131.  
51  
52  
53  
54 Miola A (2012) Tools for non-pollen palynomorphs (NPPs) analysis: A list of Quaternary NPP types  
55 and reference literature in English language (1972-2011). *Review of Palaeobotany and*  
56 *Palynology* 186: 142–161.  
57  
58  
59  
60

- 1  
2  
3 Ohlson M (2012) Soil charcoal stability over the Holocene – Comment to the paper published by de  
4  
5 Lafontaine and Asselin, *Quaternary Research*, v. 76, 2011, pp. 196-200. *Quaternary*  
6  
7 *Research*, 78: 154.  
8  
9  
10 Ohlson M and Tryterud E (2000) Interpretation of the charcoal record in forest soils: forest fires and  
11  
12 their production and deposition of macroscopic charcoal. *The Holocene* 10: 519–525.  
13  
14 Oris F, Ali AA, Asselin H et al. (2014) Charcoal dispersion and deposition in boreal lakes from 3  
15  
16 years of monitoring: Differences between local and regional fires. *Geophysical Research*  
17  
18 *Letters* 41:6743–6752.  
19  
20  
21 Overballe-Petersen MV and Bradshaw RHW (2011) The selection of small forest hollows for pollen  
22  
23 analysis in boreal and temperate forest regions. *Palynology* 35: 146–153.  
24  
25  
26 Patterson WA, Edwards KJ and Maguire DJ (1987) Microscopic charcoal as a fossil indicator of fire.  
27  
28 *Quaternary Science Reviews* 6: 3–23.  
29  
30  
31 Perkins DD, Turner BC and Barry EG (1975) Strains of *Neurospora* collected from nature. *Evolution*  
32  
33 30: 281–313.  
34  
35  
36 Peterson TC and Vose, RS (1997) An overview of the Global Historical Climatology Network  
37  
38 temperature database. *Bulletin of the American Meteorological Society* 78: 2837–2849.  
39  
40  
41 Piha A, Kuuluvainen T, Lindberg H and Vanha-Majamaa I (2013) Can scar-based fire history  
42  
43 reconstructions be biased? An experimental study in boreal Scots pine. *Canadian Journal*  
44  
45 *of Forest Research* 43: 669–675.  
46  
47  
48 Pirinen P, Henriikka S, Aalto J et al. (2012) Climatological Statistics of Finland 1981-2010. Finnish  
49  
50 Meteorological Institute, Climate Change.  
51  
52 Pitkänen A, Huttunen P, Jugner K et al. (2002) A 10000 year local forest fire history in a dry heath  
53  
54 forest site in eastern Finland, reconstructed from charcoal layer records of a small mire.  
55  
56 *Canadian Journal of Forest Research* 32: 1875–1880.  
57  
58  
59  
60

- 1  
2  
3 Pitkänen A, Tolonen K, Junger H (2001) A basin-based approach to the long-term history of forest  
4  
5 fires as determined from peat strata. *The Holocene* 11: 599–605.  
6  
7  
8 R Core Team (2014) R: A Language and Environment for Statistical Computing. Vienna: R  
9  
10 Foundation for Statistical Computing. Available at: <http://www.R-project.org/>.  
11  
12 Reimer PJ, Bard E, Bayliss A et al. (2013) IntCal13 and Marine13 radiocarbon age calibration curves  
13  
14 0-50,000 years cal BP. *Radiocarbon* 55: 1869–1887.  
15  
16  
17 Remy CC, Fouquemberg C, Asselin H et al. (2018) Guidelines for the use and interpretation of  
18  
19 palaeofire reconstructions based on various archives and proxies. *Quaternary Science*  
20  
21 *Reviews* 193: 312–322.  
22  
23  
24 Rogers BM, Soja AJ, Goulden ML et al. (2015) Influence of tree species on continental differences  
25  
26 in boreal fires and climate feedbacks. *Nature Geoscience* 8: 228–234.  
27  
28  
29 Seppä H, Bjune AE, Telford RJ et al. (2009a) Last nine-thousand years of temperature variability in  
30  
31 Northern Europe. *Climate of the Past* 5: 523–535.  
32  
33  
34 Seppä H, Alenius T, Bradshaw RHW et al. (2009b) Invasion of Norway spruce (*Picea abies*) and the  
35  
36 rise of the boreal ecosystem in Fennoscandia. *Journal of Ecology* 97: 629–640.  
37  
38  
39 Shear CL and Dodge BO (1927) Life histories and heterothallism of the red bread-mold fungi of the  
40  
41 *Monilia sitophila* group. *Journal of Agricultural Research* 34: 1019–1042.  
42  
43  
44 Stivrins N, Buchan MS, Disbrey HR et al. (2017) Widespread, episodic decline of alder (*Alnus*)  
45  
46 during the medieval period in the boreal forest of Europe. *Journal of Quaternary Science*  
47  
48 32: 903–907.  
49  
50  
51 Stockmarr J (1971) Tablets with spores used in absolute pollen analysis. *Pollen et Spores* 13: 615–  
52  
53 621.  
54  
55  
56 Swain AM (1973) A history of fire and vegetation in northeastern Minnesota as recorded in lake  
57  
58  
59  
60

- 1  
2  
3 Taavitsainen J-P, Simola H and Grönlund E (1998) Cultivation history beyond the periphery: early  
4  
5 agriculture in the north European taiga. *Journal of the World Prehistory* 12: 199–253.  
6  
7  
8 Tikkanen O-P and Chernyakova IA (2014) Past human population history affects current forest  
9  
10 landscape structure of Vodlozero National Park, Northwest Russia. *Silva Fennica* 48:  
11  
12 1207.  
13  
14  
15 Tuominen S (1990) Kotisten aarniometsän metsähistoria ja puustorakennetyypit. M.Sc. thesis,  
16  
17 University of Helsinki, Helsinki. 77p.  
18  
19  
20 Väiliranta M, Oinonen M, Seppä H et al. (2014) Unexpected problems in AMS <sup>14</sup>C dating of fen peat.  
21  
22 *Radiocarbon* 56: 95–108.  
23  
24  
25 Van Geel B (1972) Palynology of a section from the raised peat bog “Wietmarscher Moor”, with  
26  
27 special reference to fungal remains. *Acta Botanica Neerlandica* 21: 261–284.  
28  
29  
30 Van Geel B (1978) A palaeoecological study of Holocene peat bog sections in Germany and the  
31  
32 Netherlands, based on the analysis of pollen, spores and macro- and microscopic remains  
33  
34 of fungi, algae cormophytes and anymals. *Review of Palaeobotany and Palybology* 25:  
35  
36 1–120.  
37  
38  
39 Wallenius T (2011) Major decline in fires in coniferous forests-reconstructing the phenomenon and  
40  
41 seeking for the cause. *Silva Fennica* 45: 139–155.  
42  
43  
44 Wallenius T, Lilja S and Kuuluvainen T (2007) Fire history and tree species composition in managed  
45  
46 *Picea abies* stands in southern Finland: implications for restoration. *Forest Ecology and*  
47  
48 *Management* 250: 89–95.  
49  
50  
51 Wallenius TH, Kauhanen H, Herva H et al. (2010) Long fire cycle in northern boreal *Pinus* forests in  
52  
53 Finnish Lapland. *Canadian Journal of Forest Research* 40: 2027–2035.  
54  
55  
56 Whitlock C and Larsen C (2001) Charcoal as a fire proxy. In: Smol JP, Birks HJB and Last WM  
57  
58 (Eds.), *Tracking Environmental Change Using Lake Sediments. Volume 3: Terrestrial,*  
59  
60

Algal, and Siliceous Indicators. Kluwer Academic Publishers, Dordrecht, The Netherlands.

Yamaguchi DK (1991) A simple method for cross-dating increment cores from living trees. *Canadian Journal of Forest Research* 21: 414–416.

Zackrisson O (1977) Influence of forest fires on the north Swedish boreal forest. *Oikos* 29: 22–32.

**Figure 1.** Location of studied sites in Fennoscandia and western Russia (A): 1 – Naava hollow (B); 2- Kämmekkä hollow (C); 3 – Polttiais hollow (D). We compared our findings to nearby sites studied earlier: 4 – Sudenpesä (Clear et al., 2015); 5 – Vesijako (Clear et al., 2013); 6 – Kukka hollow, 7 – Larix hollow, 8 – Mosquito hollow and 9 – Olga hollow (Kuosmanen et al., 2014).

**Figure 2.** Bacon age-depth models for (A) Naava hollow, (B) Kämmekkä hollow and (C) Polttiais hollow. The calibrated  $^{14}\text{C}$  AMS dates are shown in transparent blue, and the age-depth model is shown in grey (darker greys indicate more likely calendar ages; grey stippled lines show 95% confidence intervals). The red curve is the posterior mean chronology. The laboratory numbers for the  $^{14}\text{C}$  AMS dates are also shown (see Table 1). Biostratigraphic marker of *Picea* pollen values according to Naava hollow data and southern Finland *Picea* pollen-stratigraphical patterns.

**Figure 3.** Fire proxies in Naava (A), Kämmekkä (B) and Polttiais (C) hollow, as a function of depth. Fire proxies are represented by quadrats – microscopic charcoal (20–150  $\mu\text{m}$ ), stars – macroscopic charcoal (150  $\mu\text{m}$ –1 mm), diamonds – large charcoal pieces (>1 mm), asterisk – fire scar (assigned into a sediment sample whose age appears to match it the best) and filled circles – *Neurospora*.

**Figure 4.** Fire frequency for Kämmekkä (A), Polttiais (B) and Naava (C) hollow. Dots at the top of boxes indicate the sampling density, a higher row of crosses – the inferred fires and the lower row of crosses – the fires in 120-year bins. Black curve – the posterior mean of the fire frequency and

1  
2  
3 gray band – the 95% highest density interval. X-axis – age and y-axis fire frequency data in 120-  
4  
5 year bins.  
6  
7

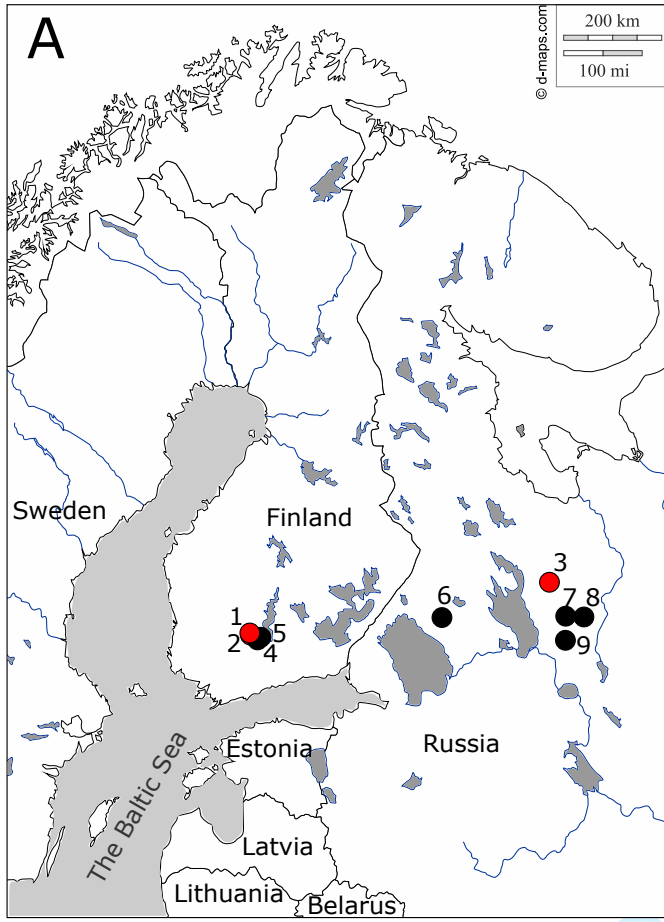
8 **Table 1.**  $^{14}\text{C}$  Accelerator mass spectrometry and biostratigraphic dates used in age-depth models of  
9  
10 Kämmeikkä, Naava and Polttiais hollows.  
11  
12

13 **Table 2.** The mean and median fire return intervals with three different sources of uncertainty.  
14

15  
16 Timing: posterior mean of the mean or median fire return interval along with the credibility interval  
17  
18 computed from the Bacon chronologies. Bootstrap: the mean and median of the fire return intervals  
19  
20 using the mean chronology along with the bootstrap-based confidence interval. Both: The posterior  
21  
22 mean of the mean (median) fire return interval along with the uncertainty limits that considers the  
23  
24 timing uncertainty and the uncertainty from the estimation of the sampling distribution of the mean  
25  
26 (median).  
27  
28  
29  
30  
31  
32  
33  
34  
35  
36  
37  
38  
39  
40  
41  
42  
43  
44  
45  
46  
47  
48  
49  
50  
51  
52  
53  
54  
55  
56  
57  
58  
59  
60

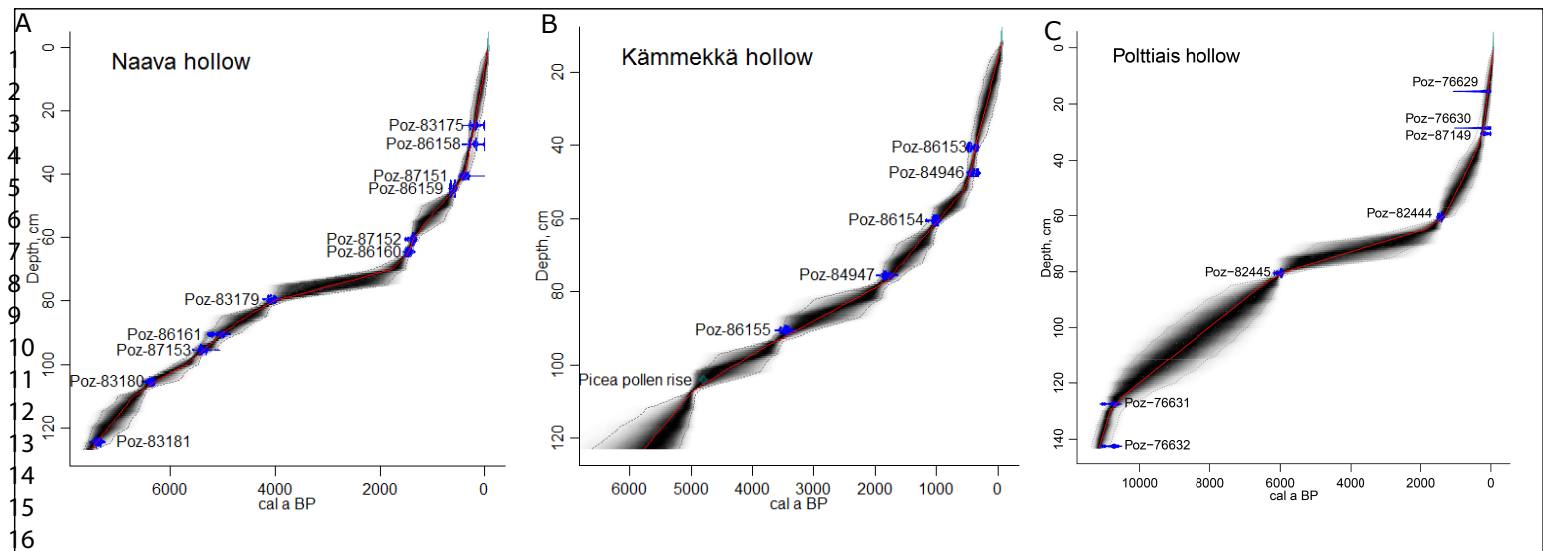


1  
2  
3  
4  
5  
6  
7  
8  
9  
10  
11  
12  
13  
14  
15  
16  
17  
18  
19  
20  
21  
22  
23  
24  
25  
26  
27  
28  
29  
30  
31  
32  
33  
34  
35  
36  
37  
38  
39  
40  
41  
42  
43  
44  
45  
46  
47  
48  
49  
50  
51  
52  
53  
54  
55  
56  
57  
58  
59  
60



Peer Review

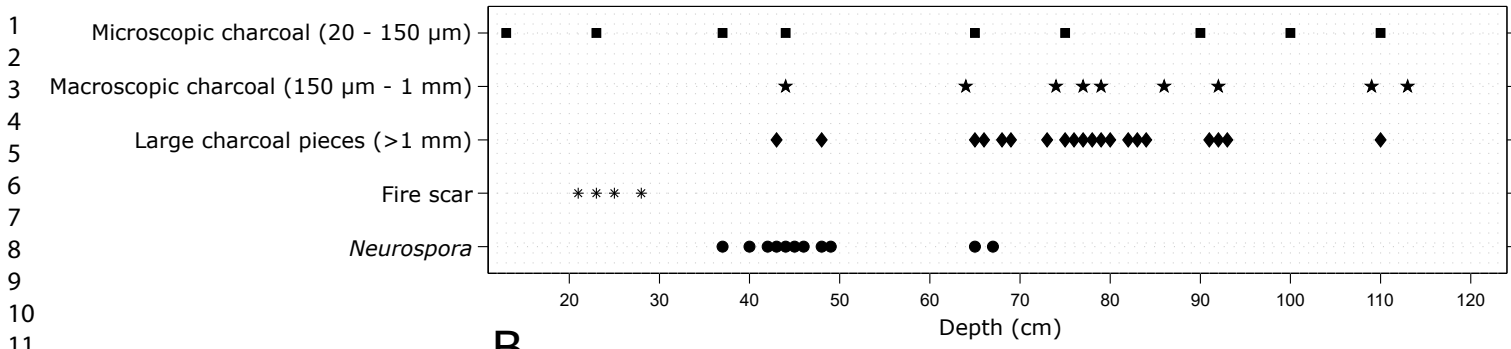




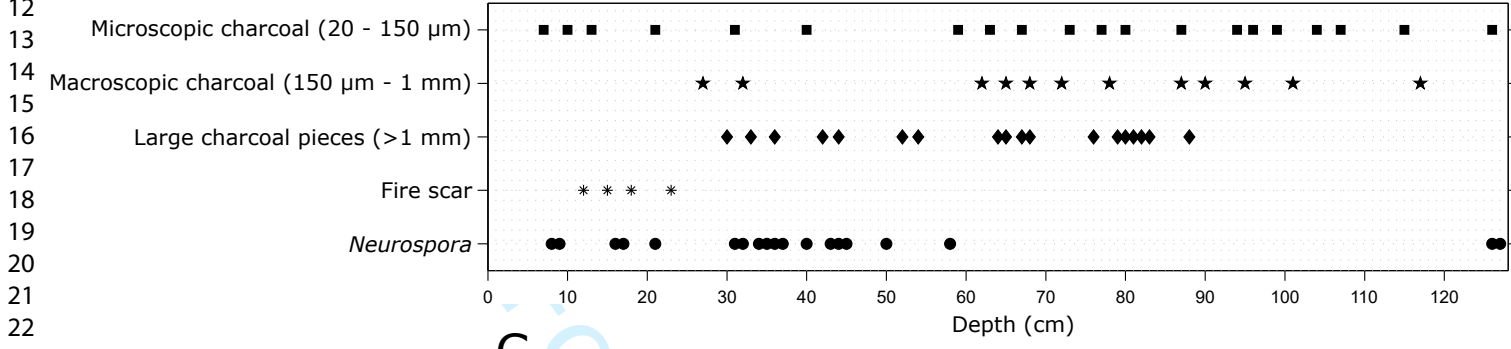
17  
18  
19  
20  
21  
22  
23  
24  
25  
26  
27  
28  
29  
30  
31  
32  
33  
34  
35  
36  
37  
38  
39  
40  
41  
42  
43  
44  
45  
46  
47  
48  
49  
50  
51  
52  
53  
54  
55  
56  
57  
58  
59  
60

For Peer Review

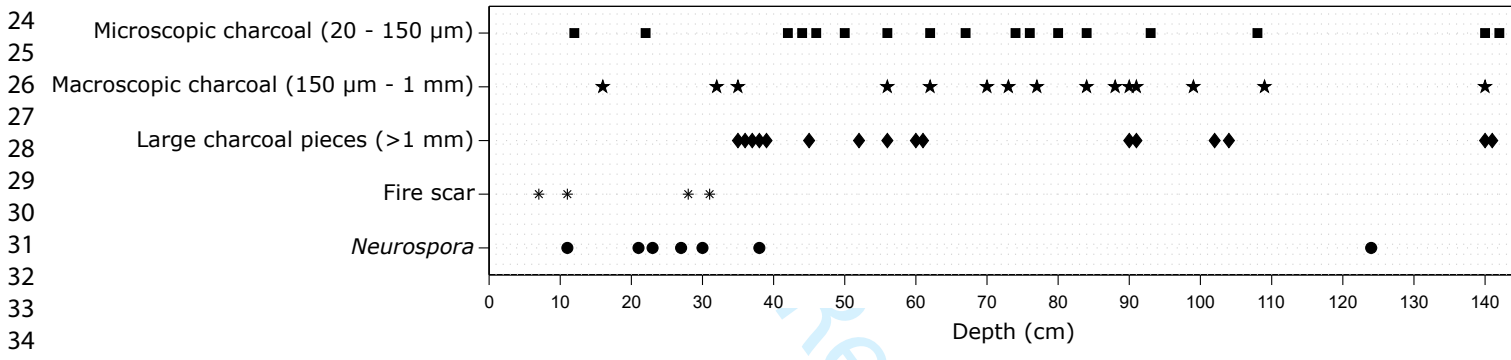
A

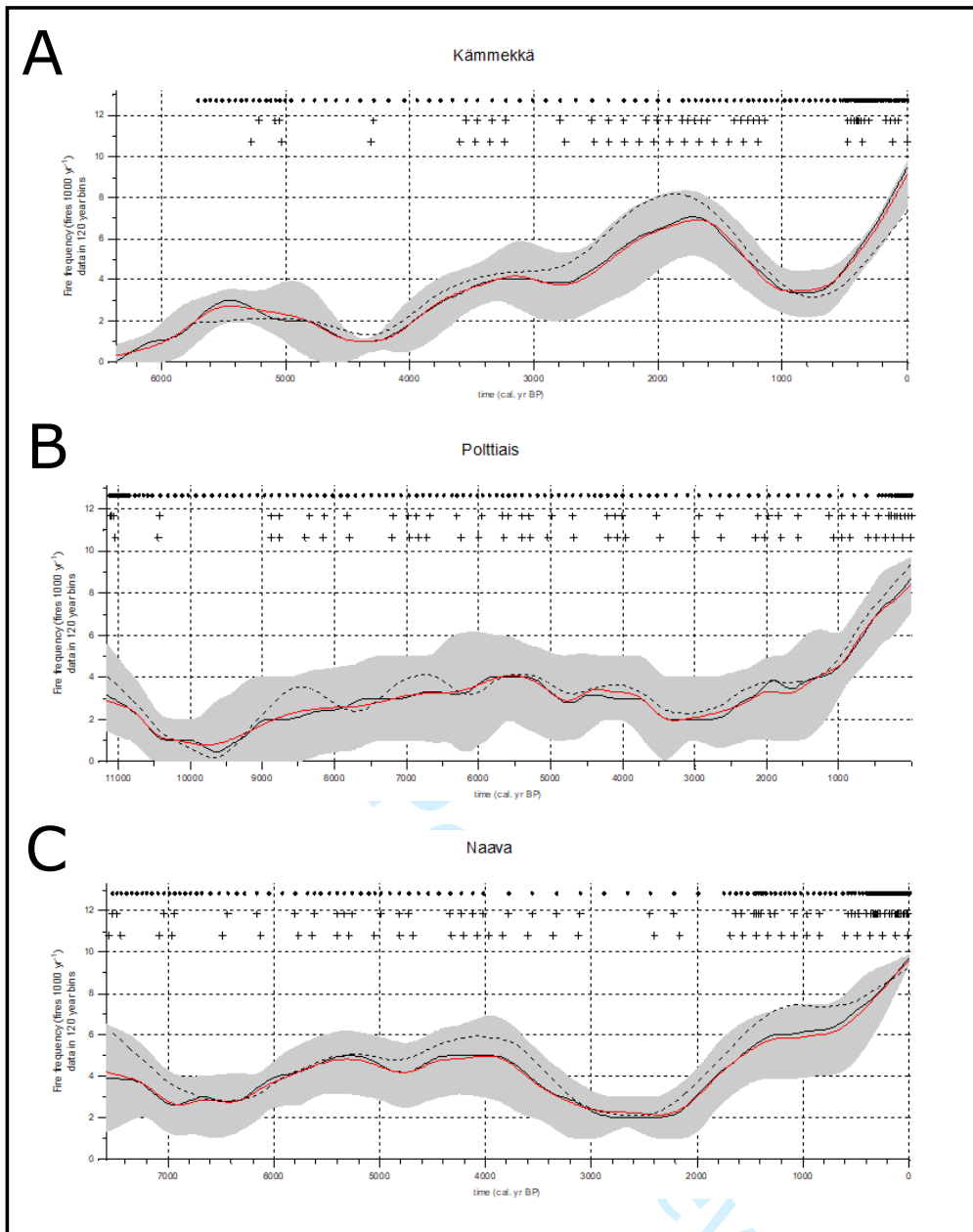


B



C





**Table 1.**  $^{14}\text{C}$  Accelerator mass spectrometry and biostratigraphic dates used in age-depth models of Kämmekkä, Naava and Polttiais hollows.

Site	Depth, cm	Laboratory number	Age, $^{14}\text{C}$	Cal yr BP, 95% ranges	Material dated/notes
Kämmekkä hollow	40–41	Poz-86153	370±30	320–500	Bulk, peat
Kämmekkä hollow	47–48	Poz-84946	335±30	310–475	<i>Picea abies</i> needle + wood
Kämmekkä hollow	60–61	Poz-86154	1115±30	940–1170	Bulk, peat
Kämmekkä hollow	75–76	Poz-84947	1880±35	1725–1890	Charcoal
Kämmekkä hollow	90–91	Poz-86155	3240±35	3390–3560	Bulk, peat
Kämmekkä hollow	104			4800	<i>Picea</i> pollen rise
Kämmekkä hollow	123.5	Poz-84948	3820±35	4090–4400	Wood; excluded from the age-depth model due to outlier.
Naava hollow	24–25	Poz-83175	190±30	-5–300	Plant remains
Naava hollow	30–31	Poz-86158	210±30	-5–305	Bulk, peat
Naava hollow	40–41	Poz-87151	315±30	300–465	Bulk, peat
Naava hollow	44–45	Poz-86159	655±30	560–670	Bulk, peat
Naava hollow	60–61	Poz-87152	1495±30	1310–1515	Bulk, peat
Naava hollow	64–65	Poz-86160	1560±30	1390–1530	Bulk, peat
Naava hollow	79–80	Poz-83179	3730±30	3980–4150	Plant remains
Naava hollow	90–91	Poz-86161	4445±30	4890–5280	Bulk, peat
Naava hollow	95–96	Poz-87153	4635±35	5305–5465	Bulk, peat
Naava hollow	105–106	Poz-83180	5600±40	6300–6450	Plant remains
Naava hollow	124–125	Poz-83181	6480±40	7315–7465	Plant remains

Polttiais hollow	15–16	Poz-76629	125.07±0.37 pMC	75–115	Two seeds of <i>Picea abies</i> , one stem of <i>Polytrichum</i> sp.
Polttiais hollow	28–29	Poz-76630	122.33±0.37 pMC	70–120	Stems of <i>Polytrichum</i> sp. and <i>Sphagnum</i> sp.
Polttiais hollow	30–31	Poz-87149	155±30	155–285	bulk, peat
Polttiais hollow	40–41	Poz-82443	3743±35	3985–4230	bulk, peat; Not used in the model because of an outlier
Polttiais hollow	60–61	Poz-82444	1530±30	1350–1525	bulk, peat
Polttiais hollow	80–81	Poz-82445	5240±35	5920–6180	bulk, peat
Polttiais hollow	100–101	Poz-87150	3185±35	3350–3480	bulk, peat; Not used in the model because of an outlier
Polttiais hollow	127–128	Poz-76631	9480±50	10580–11070	<i>Sphagnum teres</i> stems
Polttiais hollow	142–143	Poz-76632	9480±60	10573–11080	Three fruits + two fragm. of fruit scales of <i>Betula</i> sec. Alba, one fruit scales of <i>Populus</i> sp.

**Table 2** The mean and median fire return intervals with three different sources of uncertainty. Timing: posterior mean of the mean or median fire return interval along with the credibility interval computed from the Bacon chronologies. Bootstrap: the mean and median of the fire return intervals using the mean chronology along with the bootstrap-based confidence interval. Both: The posterior mean of the mean (median) fire return interval along with the uncertainty limits that considers the timing uncertainty and the uncertainty from the estimation of the sampling distribution of the mean (median).

		Mean	Median
Kämmekkä	Timing	143 (130–161)	64 (41–94)
	Bootstrap	135 (84–194)	54 (47–114)
	Both	143 (72–259)	64 (25–135)
Polttiais	Timing	237 (231–244)	137 (91–181)
	Bootstrap	237 (167–312)	168 (106–267)
	Both	237 (139–373)	137 (45–262)
Naava	Timing	126 (123–129)	52 (34–71)
	Bootstrap	125 (91–170)	62 (34–105)
	Both	126 (78–183)	52 (21–128)

## Supplementary Material 1

### Using CharAnalysis for small hollow data

CHAR provides useful statistical considerations about the thresholds that is crucial aspect when screening possible fire-events from the background charcoal noise. CharAnalysis is a set of diagnostic and analytical tools designed for analysing sediment-charcoal records when the goal is peak detection to reconstruct 'local' fire history (Higuera, 2009, CHAR manual).

The macro- and microcharcoal records underwent statistical analysis using the program CharAnalysis (Higuera et al. 2009), which decomposed the record into peak ( $C_{\text{peak}}$ ) and background ( $C_{\text{background}}$ ) components in order to determine fire episodes. Charcoal concentration was interpolated to constant time steps (using the age-depth model; Figure 2) to produce equally spaced intervals and then calculated the macrocharcoal accumulation rate ( $\text{CHAR particles cm}^{-2} \text{ yr}^{-1}$ ). Brossier et al. have found that the median temporal resolution from the entire sequence to interpolate the CHAR series (the default in CharAnalysis) is too large and therefore suggest that the optimal sampling interval for detecting individual fires should be  $<0.12\text{--}0.20$  times the mFFI (median fire free interval). Based on the fire scars observed (see Table 2 in the article) this resulted 5-year time steps for us. The non-log transformed CHAR series was then fitted with a Lowess smoother, robust to outliers, to smooth the series and as such identify  $C_{\text{background}}$ .  $C_{\text{peak}}$  was what remained after the  $C_{\text{background}}$ , smooth, was subtracted from the CHAR time series. We followed the guidelines of Brossier et al and selected the smoothing window as the smallest smoothing window the resulted signal to noise index (SNI)  $>3$  also checking that the goodness of fit test is smaller than 0.1. This resulted us with the following windows Kämmekkä 800, Naava 800 and Polttiais 1200. A statistically robust proxy for local fire episodes (Higuera et al. 2010); charcoal peaks, were identified as positive residuals exceeding the 95<sup>th</sup> percentile threshold of the Gaussian mixture CHAR background model.

After this CharAnalysis performs a "minimum count" screening before indicating the final peaks by assessing whether the charcoal counts in 75-year window before and after the oldest charcoal above the threshold are from the same Poisson distribution. If the sequence passes the test, the first slice of the sequence is indicated as a fire peak.

However, in small hollow sediments the charcoal profiles are not as spiked as in lake sediments. This causes the fact that the first slice above threshold may not be the highest in the sequence. Hence, we adjusted the identified the slice with the largest charcoal abundance in

1  
2  
3 the sequence or the middlemost slice in the case when no single value is clearly higher. Also,  
4 a larger window that 75 years may be needed at some cases when applying CharAnalysis on  
5 small hollow data, but this was not the case here.  
6  
7

8  
9 The macro and micro charcoal abundancies along with the identified peaks are shown  
10 in Figure 1–3. The figure show that without the adjustment the peak locations would be  
11 remarkably different.  
12  
13

14  
15  
16  
17 Figure 1. Micro- and macroscopic charcoal abundance and identified fire peaks from CHAR for  
18 Naava, Kämmeikkä and Plttiais hollow.  
19

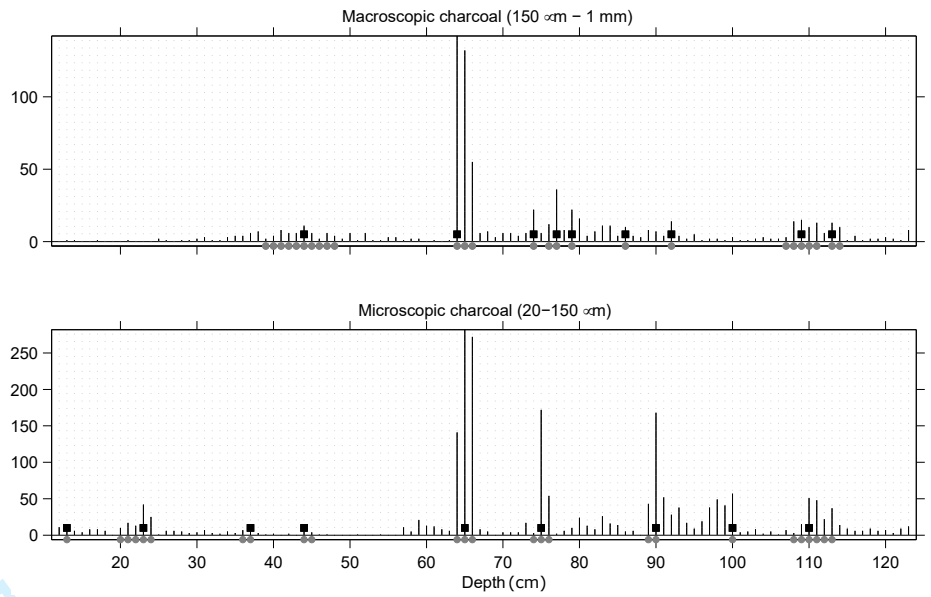
## 20 21 22 23 24 **References**

25 Higuera P (2009) CharAnalysis 0.9: Diagnostic and analytical tools for sediment-charcoal  
26 analysis. User's Guide, Montana State University, University of Illinois.  
27

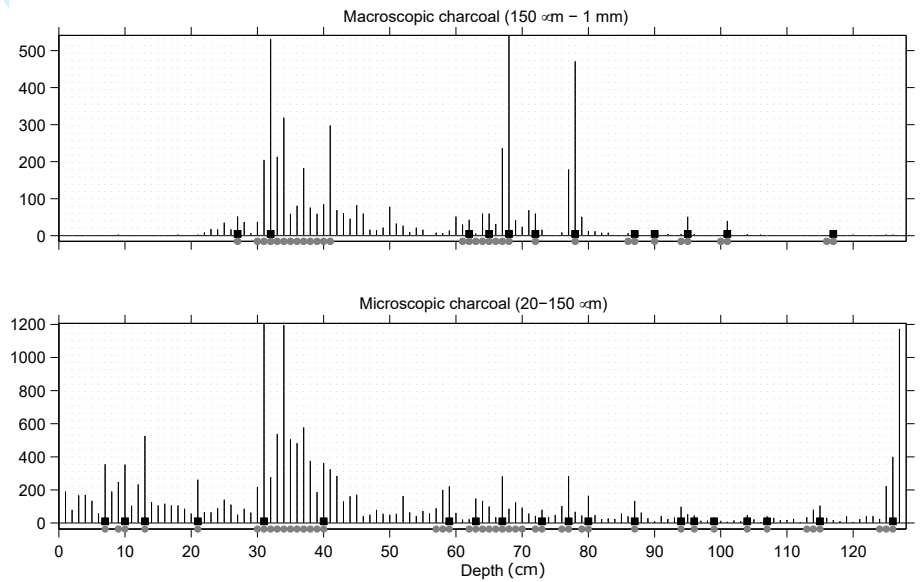
28 Higuera PE, Gavin DG, Bartlein PJ et al. (2010) Peak detection in sediment-charcoal records:  
29 impacts of alternative data analysis methods on fire-history interpretations.  
30  
31  
32  
33  
34  
35  
36  
37  
38  
39  
40  
41  
42  
43  
44  
45  
46  
47  
48  
49  
50  
51  
52  
53  
54  
55  
56  
57  
58  
59  
60  
*International Journal of Wildland Fire* 19: 996–1014.



# A Kammekka



# B Naava



# C Polttiais

