

DNA RESEARCH pp. 1–8, (2014)

doi:10.1093/dnares/dsu015

Efficient DNA Fingerprinting Based on the Targeted Sequencing of Active Retrotransposon Insertion Sites Using a Bench-Top High-Throughput Sequencing Platform

YUKI Monden¹, AYAKA Yamamoto², AKIKO Shindo¹, and MAKOTO Tahara^{1,*}

Graduate School of Environmental and Life Science, Okayama University, 1-1-1 Tsushima-Naka, Kita-ku, Okayama 700-8530, Japan¹ and Faculty of Agriculture, Okayama University, 1-1-1 Tsushima-Naka, Kita-ku, Okayama 700-8530, Japan²

*To whom correspondence should be addressed. Tel. +81 86-251-8312. Fax. +81 86-251-8388.
E-mail: tahara@cc.okayama-u.ac.jp

(Received 22 November 2013; accepted 11 April 2014)

Abstract

In many crop species, DNA fingerprinting is required for the precise identification of cultivars to protect the rights of breeders. Many families of retrotransposons have multiple copies throughout the eukaryotic genome and their integrated copies are inherited genetically. Thus, their insertion polymorphisms among cultivars are useful for DNA fingerprinting. In this study, we conducted a DNA fingerprinting based on the insertion polymorphisms of active retrotransposon families (*Rtsp-1* and *Lib*) in sweet potato. Using 38 cultivars, we identified 2024 insertion sites in the two families with an Illumina MiSeq sequencing platform. Of these insertion sites, 91.4% appeared to be polymorphic among the cultivars and 376 cultivar-specific insertion sites were identified, which were converted directly into cultivar-specific sequence-characterized amplified region (SCAR) markers. A phylogenetic tree was constructed using these insertion sites, which corresponded well with known pedigree information, thereby indicating their suitability for genetic diversity studies. Thus, the genome-wide comparative analysis of active retrotransposon insertion sites using the bench-top MiSeq sequencing platform is highly effective for DNA fingerprinting without any requirement for whole genome sequence information. This approach may facilitate the development of practical polymerase chain reaction-based cultivar diagnostic system and could also be applied to the determination of genetic relationships. **Key words:** DNA fingerprinting; high-throughput sequencing; molecular marker; retrotransposon; sweet potato

1. Introduction

Globally, the sweet potato [*Ipomoea batatas* (L.) Lam] is an important food crop with an annual production of 104 million tons (Food and Agriculture Organization of the United Nations; <http://faostat3.fao.org/>, 20 May 2014, date last accessed). This crop is known to be a valuable food source that contains various nutrients, including a high starch content, complex carbohydrates, dietary fibre, vitamins and anthocyanins. In addition to its high nutrient content, this crop is resilient, easy to propagate and grows relatively well in infertile and nitrogen-poor soils. There are over 8000 varieties, including wild accessions, landraces and breeding lines registered with the International Potato Center ([\[cipotato.org/sweetpotato/\]\(http://cipotato.org/sweetpotato/\), 20 May 2014, date last accessed\). Thus, the sweet potato is grown widely and is used for various purposes throughout the world. However, the sweet potato is a hexaploid \(\$2n = 6x = 90\$ \) outbreeding species with a high degree of heterozygosity, and genome sequence information is not available for this species, which has hindered genetic analyses, the development of molecular markers and DNA fingerprinting.^{1–5}](http://</p></div><div data-bbox=)

Retrotransposons are major components of eukaryotic genomes and they are present in high copy numbers in most of the plants.^{6–8} Retrotransposons are divided into two major groups: a group with a long terminal repeat (LTR) sequence at both ends and another group without LTRs (non-LTR). The non-LTR

© The Author 2014. Published by Oxford University Press on behalf of Kazusa DNA Research Institute.

This is an Open Access article distributed under the terms of the Creative Commons Attribution Non-Commercial License (<http://creativecommons.org/licenses/by-nc/3.0/>), which permits non-commercial re-use, distribution, and reproduction in any medium, provided the original work is properly cited. For commercial re-use, please contact journals.permissions@oup.com

retrotransposons are further divided into long interspersed nuclear elements (LINEs) and short interspersed nuclear elements (SINES).^{6–8} In our previous study, we identified two active retrotransposon families in sweet potato, i.e. an LTR-type *Rtsp-1* and a LINE-type *Llb*.^{9,10} These two families exhibited a high degree of insertion polymorphism and newly inserted copies were inherited steadily throughout clonal propagation.¹⁰ The retrotransposon insertion polymorphisms found in different cultivars can be used for DNA fingerprinting.^{11–16}

Next-generation sequencing technology has developed rapidly in the past few years and it has been utilized in various fields of genetics, thereby accelerating genomic and genetic research dramatically. More recently, bench-top high-throughput sequencing instruments such as the Roche/454 GS Junior (Roche, Basel, Switzerland), Illumina MiSeq and Ion Torrent PGM (Life Technologies) have been released, which are capable of sequencing several megabase to gigabase pairs in a single lane-sequencing run with enhanced speed and cost performance.^{17,18} In particular, the MiSeq system has the highest throughput per run and the lowest error rate,¹⁷ and the latest version enables to generate up to 15 Gb per run with 2×300 bp reads using new reagent kits (<http://www.illumina.com/systems/miseq>, ilmn, 20 May 2014, date last accessed). These bench-top systems produce smaller sequence datasets than traditional high-throughput sequencing instruments (Roche/454 GS FLX+ and Illumina HiSeq 2000), but their utilization is increasingly widespread because of their greater time and cost performance during sequencing analysis, although with modest performance.

In the present study, we conducted DNA fingerprinting based on the insertion polymorphisms of the active retrotransposon families (*Rtsp-1* and *Llb*) in sweet potato. Using a bench-top sequencing platform, we successfully identified 2024 insertion sites in 38 cultivars based on a single lane-sequencing run. It should be noted that the insertion sites of the active retrotransposon families were highly polymorphic among those cultivars. Using the cultivar-specific insertion sites, we successfully developed sequence-characterized amplified region (SCAR) markers, which may facilitate the precise identification of cultivars. Moreover, the genotyping data related to the insertion sites can be used to determine the genetic relationships among cultivars. The sweet potato is a non-model crop species and its whole genome sequencing data are not available, but our method enables efficient genotyping based on a number of polymorphic retrotransposon insertion sites.

2. Materials and methods

2.1. DNA samples

DNA samples from the 38 sweet potato cultivars listed in Supplementary Table S1 were provided by the

National Agriculture and Food Research Organization, Kyusyu Okinawa Agricultural Research Center. Young leaves were collected from field grown plants and genomic DNA was extracted using a DNeasy Plant Mini Kit (Qiagen, Inc., Germany).

2.2. MiSeq library construction

Genomic DNA (5 μ g) was separated into fragments of ~ 6 kb by g-TUBE (Covaris) centrifugation and purified using a QIAquick PCR Purification Kit (Qiagen). The purified products were treated with DNA polymerase I and T4 DNA polymerase to convert the heterogeneous ends via their physical fragmentation into blunt ends. The blunt ends were adenylated at the 3' end using a Klenow fragment that lacked a 5' to 3' exonuclease activity. A forked adapter with a T overhang at the 5' double-stranded end was ligated using T4 DNA ligase. The retrotransposon insertion sites were specifically amplified using nested polymerase chain reaction (PCR), where the first PCR was performed with retrotransposon-specific (*Rtsp-1*_ppt or *Llb*_L_D4) and adapter-specific (AP2) primer combinations using the ligated products as the template, and the second PCR was performed with primers for the 3' end sequence of *Rtsp-1* or *Llb* [adjacent to the 3' end polyadenosine sequence (poly(A))] and an adapter sequence (AP3) using the initial PCR products as the template. The PCR comprises an initial denaturation at 94°C for 2 min, which was followed by 30 cycles at 94°C for 30 s, 80°C for 30 s, 58°C for 30 s and 72°C for 1 min, with a final extension at 72°C for 15 min. The PCR products were selected by size (300–500 bp) using gel electrophoresis and purified with a QIAquick Gel Extraction Kit (Qiagen). The MiSeq sequencing adapters were ligated to the size-selected products from each cultivar using a TruSeq DNA-Sampling Preparation Kit (Illumina) to obtain cultivar-specific combinations of the dual index sequences in the adapters (Fig. 1). Equal amounts of the ligated products from the 38 cultivars were pooled before MiSeq sequencing, and a

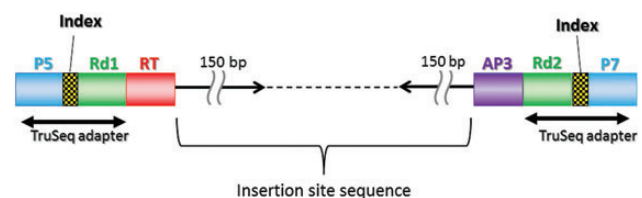


Figure 1. Scheme of the MiSeq sequencing library in this study. The 150-bp paired reads (black arrow) represent the junction sequence of the retrotransposon (*Rtsp-1* or *Llb*) (red box) and the insertion site sequence from the AP3 adapter (purple box). The TruSeq adapters used in this study were indexed with short 6–8 bp sequences to facilitate multiplexing in a single sequencing run. The P5 and P7 sequences (blue box) allowed the final products to hybridize to the Illumina flow cell. The Rd1 and Rd2 sequences (green box) served as sequencing primers.

paired-end sequence of 150 bp was determined at each end (Fig. 1). MiSeq sequencing was conducted using the MS-102-1001 MiSeq Reagen Kit (300 cycles) (Illumina). In sequencing run, we added a PhiX Control v3 (Illumina) at 50% of our library, because Illumina recommends spike-in a PhiX control DNA for low diversity library where a significant number of the reads have the same sequence. It is known that a high-concentration spike-in (40% or higher) of PhiX improves matrix generation and phasing/prephasing calculations and helps balance the overall lack of sequence diversity. Our library was considered to have low diversity nucleotide composition because of the *Rtsp-1* or *Llb* sequences, or an adaptor AP3 sequence at the beginning of one read of a sequence pair. This should be combined with a reduction of the amount of library used. The sequences of the adapters and primers are reported in Supplementary Table S2. The MiSeq reads of this study have been submitted to DDBJ (<http://www.ddbj.nig.ac.jp/>, 20 May 2014, date last accessed) under accession no. DRA001340.

2.3. Data analysis

The MiSeq output was divided into each cultivar based on the dual index TruSeq sequence. The sequencing data were handled using Maser, the pipeline execution system of the Cell Innovation Program at the National Institute of Genetics (http://cell-innovation.nig.ac.jp/index_en.html, 20 May 2014, date last accessed). When one read of a sequence pair was filtered for invalid *Rtsp-1* or *Llb* primer sequences, the entire pair was discarded. The LINE element of *Llb* has a poly(A) tail with variable lengths at the integration site.^{10,19} Those poly(A) sequences were removed from the *Llb* reads using the PRINSEQ tool²⁰ before subsequent data processing. After trimming the *Rtsp-1* or *Llb* sequences from the reads, they were trimmed further to 50 bp from the retrotransposon junction and filtered based on the quality value (QV) for all base calls ≥ 20 . Next, the outliers were filtered by trimming them to a specific length that included most of the sequences (>99 or $>98\%$), whereas reads shorter than this specific length were filtered out. Identical sequences observed in ≥ 10 reads were treated as a single sequence using the FASTA format with read count information, whereas those with <10 reads were discarded. Using the sequences that passed through these processes, we determined *Rtsp-1* and *Llb* insertion sites according to the following steps: (i) we conducted all-to-all comparison of these sequences to reveal their similarities, which were used to build clusters that represent an individual insertion site. It started with the self-alignment of the produced sequences via BLAT analysis²¹ using the following parameter settings: `-tileSize = 8`, `-minMatch = 1`, `-minScore = 10`, `-repMatch = -1` and `-oneOff = 2`.

BLAT is one of the local pairwise alignment programmes.²¹ (ii) We clustered these sequences into groups based on their sequence similarity with the results of pairwise alignments. In each cluster, sequences were collected in FASTA format. (iii) We performed a multiple sequence alignment using these FASTA files for each cluster to reveal the sequence similarity with ClustalW program,²² which produced an alignment file per cluster. Then, we determined the representative sequence in each cluster based on the number of sequence. The sequence with the highest number was extracted as the representative sequence in each cluster. Our results showed that the sequences to be aligned in each cluster were very similar to each other (identity of $>90\%$). These processes generated the cluster of sequence or non-clustered sequence with ≥ 10 reads as an individual insertion site that a copy of *Rtsp-1* or *Llb* was inserted in at least one or more cultivars. However, assigning the insertion sites to cultivars would probably have caused some errors, because sequence errors in the index sequence may have allocated the reads to an incorrect cultivar while sequences with small read numbers may have been incorrectly included in large clusters by the BLAT analysis. These erroneous assignments would have resulted in a very small number of reads. Thus, we set a critical value for determining the presence of *Rtsp-1* and *Llb* insertions, i.e. if the reads for a cultivar at a specific insertion site comprise $<0.01\%$ of the entire reads for that cultivar, we assumed that the retrotransposon was absent from that site. Each cultivar was genotyped by combining the presence (1) or absence (0) of information at each site for all the insertion sites (Supplementary Tables S3 and S4).

2.4. Development of SCAR markers

We designed the PCR primers to amplify the junction of the retrotransposon and its insertion site. Supplementary Tables S3 and S4 showed all genotyping information (scores 0 and 1) in the cultivars, the representative sequence in each cluster and non-cluster sequence. We focused on the putative cultivar-specific insertion site that was present in one cultivar (scoring; 1) and absent from others (scoring; 0). The primer sequence of SCAR marker was designed based on the representative sequence for the cluster of these cultivar-specific insertion site (Supplementary Table S2). The PCR was performed with *Rtsp-1*-specific primer (*Rtsp-1_ppt*) and insertion site-specific (RP_*) primer combinations using the genomic DNA as the template (Supplementary Table S2). The PCR comprises an initial denaturation at 95°C for 2 min, which was followed by 30 cycles at 95°C for 30 s, 58°C for 30 s and 72°C for 30 s, with a final extension at 72°C for 15 min. The PCR products were visualized using 1.5% agarose gel electrophoresis.

Table 1. Summary of the MiSeq read data processing

Retrotransposon	Analysis	No. of read pairs	No. of collapsed reads (≥ 10)	Ratio (%)	No. of clusters
<i>Rtsp-1</i>	Raw data	3,567,587		100	
	Validation of retrotransposon sequence	3,095,771	16,428	86.8	
	Trimming to 50 bp	3,095,771	8038	86.8	
	QV filtering (≥ 20)	2,292,344	5245	64.3	
	Outlier filtering ($>99\%$)	2,273,707	5218	63.7	
	Clustering with BLAT ^a				
<i>Llb</i>	Raw data	834,052		100	
	Validation of retrotransposon sequence	743,945	3608	89.2	
	Poly(A) tail trimming ($A \geq 3$)	743,935	3571	89.2	
	Trimming to 50 bp	743,935	3154	89.2	
	QV filtering (≥ 20)	434,502	1619	52.1	
	Outlier filtering ($>98\%$)	427,120	1603	51.2	
	Clustering with BLAT ^a				

^aThe clusters include groups of two or more sequences and non-clustered single sequences for the insertion sites of *Rtsp-1* and *Llb*, where the minimum number of reads for an identical sequence was 10.

2.5. Phylogenetic analysis

A distance matrix was calculated from the presence/absence matrices using Nei's and Li's coefficient index²³ with the FreeTree program (Supplementary Tables S5 and S6).²⁴ The phylogenetic reconstruction was based on the neighbour-joining method. Support for the internal branches in the phylogeny was assessed using 1000 bootstrap replicates. A dendrogram was constructed with MEGA5.²⁵

3. Results

3.1. MiSeq sequencing of the *Rtsp-1* and *Llb* insertion sites

We constructed a MiSeq sequencing library to screen the junction sequences of the *Rtsp-1* and *Llb* insertion sites in 38 sweet potato cultivars (Fig. 1). Each cultivar sample was labelled using a TruSeq DNA-Sampling Preparation Kit with dual indexing (Fig. 1). The *Rtsp-1* and *Llb* libraries were mixed at a ratio of 4:1 to prepare a single sequencing sample, because the copy number of *Rtsp-1* was estimated to be approximately four times higher than that of *Llb*.^{9,10}

A total of 4,401,639 read pairs were obtained from a single lane-sequencing run using the MiSeq platform, i.e. 3,567,587 and 834,052 read pairs represented *Rtsp-1* and *Llb* insertion sites, respectively (Table 1). The results indicated that the read number ratio in each library (*Rtsp-1* reads = 81.1% and *Llb* reads = 18.9%) was close to the expected value (*Rtsp-1* reads = 80% and *Llb* reads = 20%). Of these read pairs, 86.8% for *Rtsp-1* and 89.8% for *Llb* had valid retrotransposon-specific sequences (Table 1), which indicated that nested PCR could specifically amplify DNA fragments from the junction sequences of these elements. The read numbers for each sample are presented in Supplementary Table S1.

Table 2. Summary of the insertion sites identified

	All insertion sites	No. of polymorphic sites	Polymorphic ratio (%)	No. of cultivar-specific sites	Cultivar-specific ratio (%)
<i>Rtsp-1</i>	1497	1327	88.6	291	19.4
<i>Llb</i>	527	523	99.2	85	16.1
Total	2024	1850	91.4	376	18.6

3.2. Identification of the *Rtsp-1* and *Llb* insertion sites in 38 cultivars

To identify the *Rtsp-1* and *Llb* insertion sites, we selected one end of a paired read that contained the junction sequence of the *Rtsp-1* and *Llb* ends and their insertion sites. A sequence of 150 bp in the read was filtered based on the valid retrotransposon sequences and QV scores with base calls ≥ 20 in the insertion site sequence of 50 bp (see Materials and Methods) (Table 1). After these filtering processes, 63.7 and 51.2% of the reads remained for *Rtsp-1* and *Llb*, respectively (Table 1). These reads were used in the clustering analysis to obtain sequence information for each insertion site (Table 1). The clustering process was conducted using BLAT,²¹ where the parameter settings were -tileSize = 8, -minMatch = 1, -minScore = 10, -repMatch = -1 and -oneOff = 2, which generated 1497 and 527 clusters or non-clustered single sequences for the insertion sites of *Rtsp-1* and *Llb*, respectively, where the minimum number of reads required for an identical sequence was 10 (Tables 1 and 2). We detected *Rtsp-1* and *Llb* in each insertion site of the 38 cultivars (Supplementary Tables S3 and S4). In the 38 cultivars, the median number of *Rtsp-1* insertion sites per cultivar was 257.5 (range = 216–347), whereas that for *Llb* was 92.5 (range =

67–147) (Fig. 2). Also, the average number of *Rtsp-1* insertion sites among 38 cultivars was 259, whereas that of *Llb* was 102.6, respectively. Of the 1 497 *Rtsp-1* insertion sites, 88.6% were polymorphic among cultivars and 19.4% were identified as cultivar-specific sites, which were present in only one cultivar and absent from others (Table 2). For *Llb*, the same figures were 99.2 and 16.1%, respectively (Table 2). Thus, the insertion sites of these two active retrotransposon families

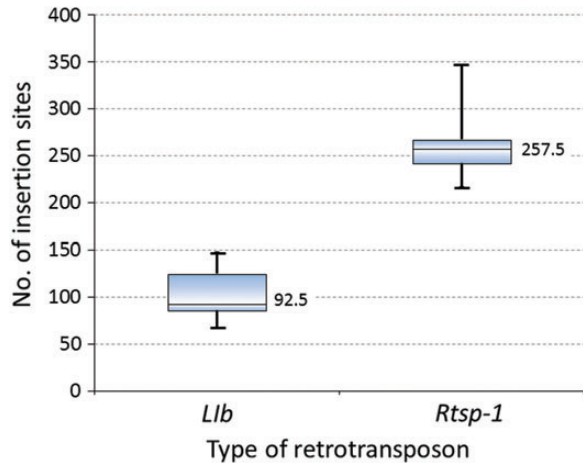


Figure 2. The numbers of *Rtsp-1* and *Llb* insertion sites identified in this study. The box plots show the distributions of these sites in the 38 cultivars. The central rectangle spans the first quartile to the third quartile. The line inside the rectangle shows the median number (257.5 and 92.5 for *Rtsp-1* and *Llb*, respectively), and the whiskers above and below the box show the maximum and minimum number, respectively.

were found to be highly polymorphic among sweet potato cultivars.

3.3. Development of SCAR markers for cultivar identification

We designed PCR primers using the *Rtsp-1* insertion sequences of five cultivar-specific sites (Supplementary Table S2). We conducted PCR amplification with the 38 sweet potato cultivars using these cultivar-specific insertion primer (RP_*) and *Rtsp-1*-specific primer (*Rtsp-1*_ppt), which produced single, distinct and clear bands (Fig. 3). The SCAR markers developed in this study can be treated as dominant markers and used for the simple and rapid screening of cultivars.

3.4. Genetic relationships among sweet potato cultivars

To investigate the genetic relationships among the 38 sweet potato cultivars, we conducted a phylogenetic analysis based on the *Rtsp-1* and *Llb* insertion sites. Basically, sweet potato is cultivated by vegetative propagation. However, Japanese sweet potato cultivars had been developed with crossing the limited number of cultivars, which indicated most cultivars used in this study were genetically related. The genetic distance scores were calculated based on Nei's and Li's coefficient index (Supplementary Tables S5 and S6). The phylogenetic trees were constructed using the neighbour-joining method (Fig. 4 and Supplementary Fig. S1). The genetic relationships among cultivars based on the *Rtsp-1* and *Llb* insertion polymorphisms were consistent well each other (Fig. 4 and Supplementary Fig. S1). Pedigree

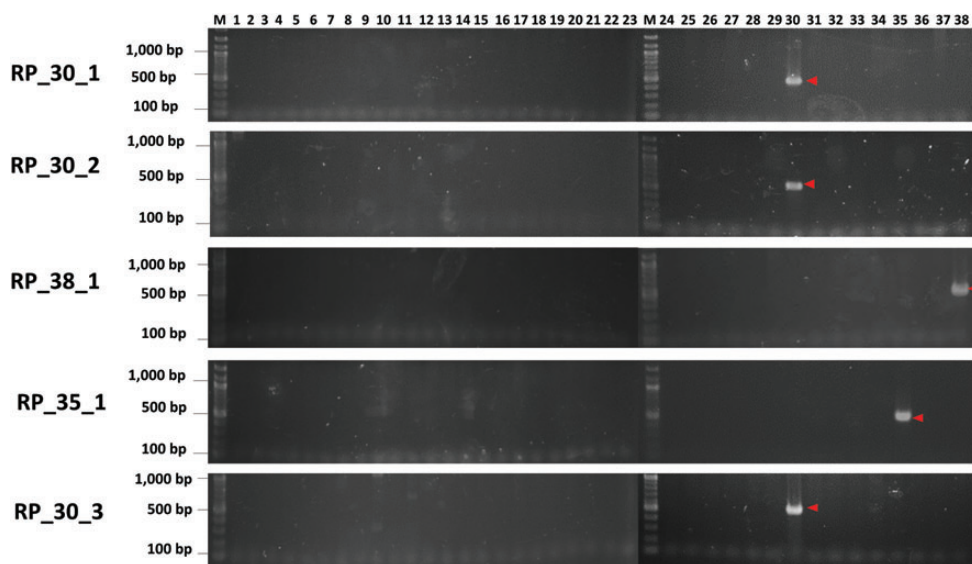


Figure 3. Agarose gel image showing the SCAR markers developed in this study. PCR amplification was conducted using the cultivar-specific insertion primer (RP_*) and the *Rtsp-1*-specific primer (*Rtsp-1*_ppt). Descriptions of these primers are provided in Supplementary Table S2. The arrows indicate the strong and reproducible bands that were specific for each cultivar. Lanes 1–38 correspond to the cultivars listed in Supplementary Table S1.

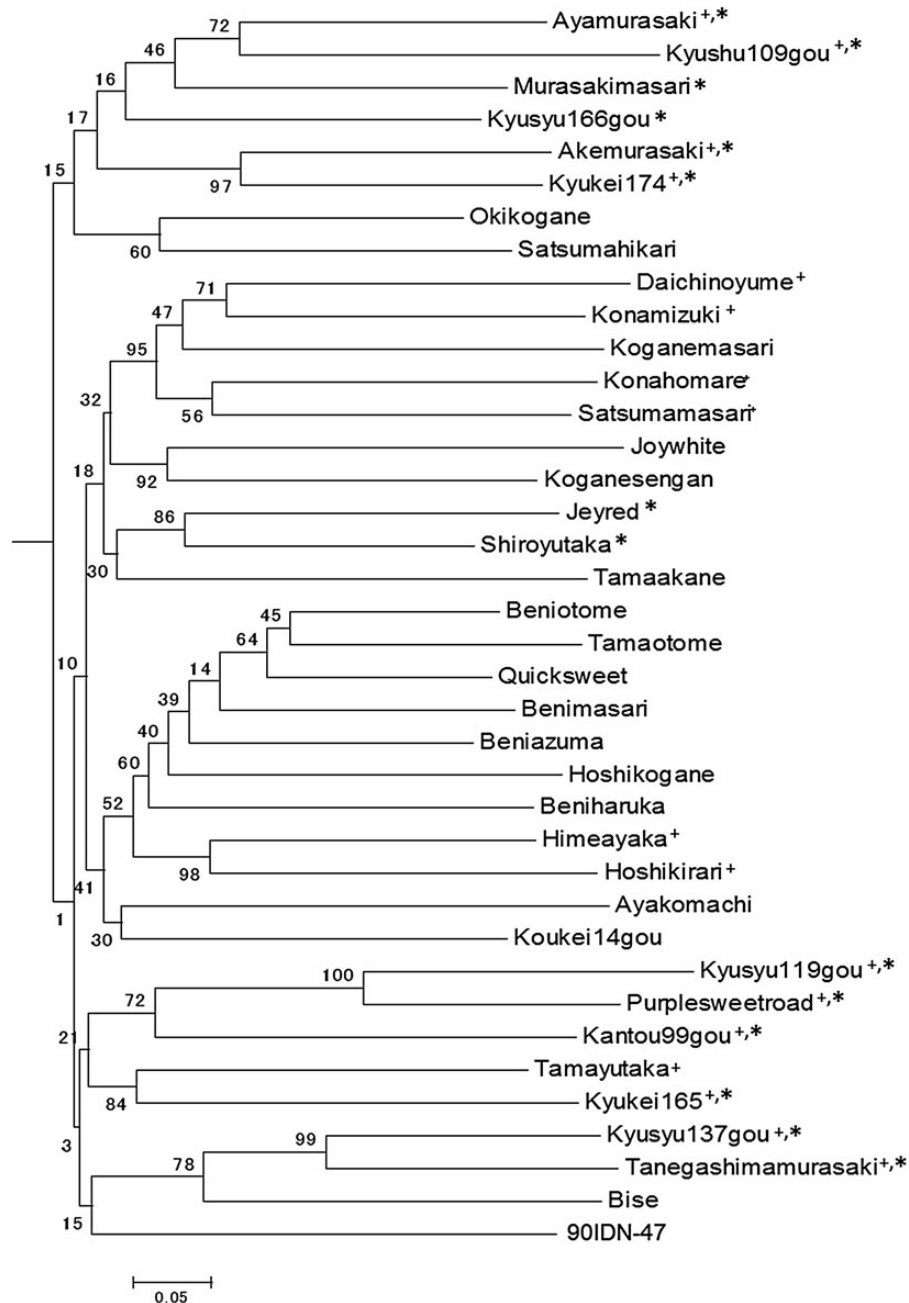


Figure 4. Phylogenetic analysis based on the *Rtsp-1* insertion polymorphisms of the cultivars. The phylogenetic tree was constructed using the neighbour-joining method. The bootstrap values are shown. ⁺The genetic relationships based on the *Rtsp-1* and *Lib* (Supplementary Fig. S1) insertion polymorphisms were well consistent. ^{*}The genetic relationships among cultivars agreed well with the pedigree information (Supplementary Fig. S2).

information was known for some cultivars (Supplementary Fig. S2), which was also consistent with the genetic relationships in the phylogenetic trees. In addition, the parent and offspring cultivars shown in the pedigree information had lower genetic distance (Supplementary Tables S5 and S6), which indicated they are genetically closely-related. This suggests that obtaining genotyping information based on the active retrotransposon insertion sites may be useful for

determining the genetic relationships among sweet potato cultivars.

4. Discussion

In this study, we conducted DNA fingerprinting based on the insertion polymorphisms of the active retrotransposon families (*Rtsp-1* and *Lib*) in the sweet

potato. The application of a MiSeq sequencing platform, which is a bench-top high-throughput sequencer, allowed >1.3 Gb of high-quality sequencing data to be produced at a low cost in a short time. We successfully identified 2024 insertion sites for two types of retrotransposon families and obtained 76,912 (2024 insertion sites \times 38 cultivars) genotyping data points in a single sequencing run. We developed several SCAR markers based on the cultivar-specific insertion sites (Fig. 3). This type of marker has several advantages compared with simple sequence repeat (SSR) marker or amplified fragment length polymorphism (AFLP) marker, because they can be used to produce specific and easily recognizable bands by agarose gel electrophoresis (Fig. 3).^{26–28} Thus, the SCAR markers developed in this study could be used for the rapid and precise screening of sweet potato cultivars in breeding programmes. Furthermore, the genetic relationships among sweet potato cultivars can be determined based on the genotyping data, which were demonstrated by the phylogenetic analysis (Fig. 4 and Supplementary Fig. S1). Our methods should accelerate sweet potato genotyping and they provide a practical method for cultivar identification.

The sweet potato is a non-model crop species and its whole genome sequence information is not available. It is a hexaploid plant ($2n = 6x = 90$) with an estimated genome size of 2200–3000 Mb.²⁹ Recently, comprehensive transcriptome sequencing of the sweet potato was reported in three studies.^{29–31} Thus, genetic analyses of the sweet potato based on molecular markers have been delayed compared with other plant species. In general, genotyping with a high-throughput sequencing system, such as the Illumina HiSeq 2000, has been conducted based on single nucleotide polymorphism (SNP) loci in model species.^{32–38} If a reference genome sequence is available, whole genome resequencing or exome resequencing may be effective for genome-wide SNP and/or indel calling using multiple samples after mapping the reads to the reference genome. In non-model crop species such as the sweet potato, however, these resequencing methods cannot be applied because of the lack of reference sequences. Thus, targeting the sequences of highly polymorphic sites in cultivars may be an efficient alternative method for genotyping these species. Moreover, high-sensitivity targeted sequencing is far less expensive and requires less sequencing data per sample than whole genome resequencing.^{14,16,19} Our results demonstrated that the active retrotransposon insertion sites were highly polymorphic in cultivated sweet potato varieties, and the targeted sequencing of these sites could be achieved using a MiSeq bench-top system. Thus, the low cost and time-saving DNA fingerprinting methods developed in this study could facilitate the precise identification of cultivars, as well as being used for

assessments of genetic diversity and conducting linkage analyses.

Acknowledgements: We thank Drs Yoshihiro Okada and Yasuhiro Takahata at the National Agriculture and Food Research Organization, Kyusyu Okinawa Agricultural Research Center, for providing plant materials and their experimental support. We also thank Drs Nobuyuki Fujii and Kazuho Ikeo at the National Institute of Genetics for the development of data analysis pipelines.

Supplementary Data: Supplementary data are available at www.dnaresearch.oxfordjournals.org

Funding

This work was supported by a Research and Development Project for Application in Promoting the New Policy of Agriculture Forestry and Fisheries grant from the Ministry of Agriculture, Forestry and Fisheries of Japan and by the Programme to Disseminate Tenure Tracking System, from the Ministry of Education, Culture, Sports, Science and Technology (MEXT), Japan (to Y.M.).

References

1. Ukoskit, K. 1997, Autopolyploidy versus allopolyploidy and low-density randomly amplified polymorphic DNA linkage maps of sweetpotato, *J. Am. Soc. Hort. Sci.*, **122**, 822–8.
2. Kriegner, A., Burg, K. and Mwanga, R.O. 2003, A genetic linkage map of sweetpotato (*Ipomoea batatas* (L.) Lam.) based on AFLP markers, *Mol. Breeding*, **11**, 169–85.
3. Cervantes-Flores, J.C., Sosinski, B., Pecota, K.V., et al. 2010, Identification of quantitative trait loci for dry-matter, starch, and β -carotene content in sweetpotato, *Mol. Breeding*, **28**, 201–16.
4. Li, A.X., Liu, Q.C., Wang, Q.M., Zhang, L.M., Zhai, H. and Liu, S.Z. 2010, Establishment of molecular linkage maps using SRAP markers in sweet potato, *Acta Agronom. Sin.*, **36**, 1286–95.
5. Zhao, N., Yu, X., Jie, Q., et al. 2013, A genetic linkage map based on AFLP and SSR markers and mapping of QTL for dry-matter content in sweetpotato, *Mol. Breeding*, doi:10.1007/s11032-013-9908-y.
6. Kumar, A. and Bennetzen, J.L. 1999, Plant retrotransposons, *Annu. Rev. Genet.*, **33**, 479–532.
7. Feschotte, C., Jiang, N. and Wessler, S.R. 2002, Plant transposable elements: where genetics meets genomics, *Nat. Rev. Genet.*, **3**, 329–41.
8. Levin, H.L. and Moran, J.V. 2011, Dynamic interactions between transposable elements and their hosts, *Nat. Rev. Genet.*, **12**, 615–27.
9. Tahara, M., Aoki, T., Suzuka, S., et al. 2004, Isolation of an active element from a high-copy-number family of

- retrotransposons in the sweetpotato genome, *Mol. Genet. Genomics*, **272**, 116–27.
10. Yamashita, H. and Tahara, M. 2006, A LINE-type retrotransposon active in meristem stem cells causes heritable transpositions in the sweetpotato genome, *Plant Mol. Biol.*, **61**, 79–94.
 11. Waugh, R., McLean, K., Flavell, A.J., et al. 1997, Genetic distribution of Bare-1-like retrotransposable elements in the barley genome revealed by sequence-specific amplification polymorphisms (S-SAP), *Mol. Gen. Genet.*, **253**, 687–94.
 12. Kumar, A. and Hirochika, H. 2001, Applications of retrotransposons as genetic tools in plant biology, *Trends Plant Sci.*, **6**, 127–34.
 13. Syed, N.H., Sureshsundar, S., Wilkinson, M.J., Bhau, B.S., Cavalcanti, J.J.V. and Flavell, A.J. 2005, Ty1-*cop* retrotransposon-based SSAP marker development in cashew (*Anacardium occidentale* L.), *Theor. Appl. Genet.*, **110**, 1195–202.
 14. Kalendar, R. 2011, The use of retrotransposon-based molecular markers to analyze genetic diversity, *Ratar. Povrt.*, **48**, 261–74.
 15. Kalendar, R., Flavell, A.J., Ellis, T.H.N., Sjakste, T., Moisy, C. and Schulman, A.H. 2011, Analysis of plant diversity with retrotransposon-based molecular markers, *Heredity*, **106**, 520–30.
 16. Poczai, P., Varga, I., Laos, M., et al. 2013, Advances in plant gene-targeted and functional markers: a review, *Plant Methods*, **9**, 6.
 17. Loman, N.J., Misra, R.V., Dallman, T.J., et al. 2012, Performance comparison of benchtop high-throughput sequencing platforms, *Nat. Biotechnol.*, **30**, 434–9.
 18. Pallen, M.J. 2013, Reply to updating benchtop sequencing performance comparison, *Nat. Biotechnol.*, **31**, 296.
 19. Xing, J., Witherspoon, D.J. and Jorde, L.B. 2013, Mobile element biology: new possibilities with high-throughput sequencing, *Trends Genet.*, **29**, 280–9.
 20. Schmieder, R. and Edwards, R. 2011, Quality control and preprocessing of metagenomic datasets, *Bioinformatics*, **27**, 863–4.
 21. Kent, W.J. 2002, BLAT—The BLAST-like alignment tool, *Genome Res.*, **12**, 656–64.
 22. Larkin, M.A., Blackshields, G., Brown, N.P., et al. 2007, Clustal W and Clustal X version 2.0, *Bioinformatics*, **23**, 2947–8.
 23. Nei, M. and Li, W.H. 1979, Mathematical model for studying genetic variation in terms of restriction endonucleases, *Proc. Natl. Acad. Sci. USA*, **76**, 5269–73.
 24. Pavlicek, A., Hrdá, S. and Flegr, J. 1999, FreeTree—Freeware program for construction of phylogenetic trees on the basis of distance data and bootstrap/jackknife analysis of the tree robustness. Application in the RAPD analysis of genus, *Folia Biol.*, **45**, 97–9.
 25. Tamura, K., Peterson, D., Peterson, N., Stecher, G., Nei, M. and Kumar, S. 2011, MEGA5: molecular evolutionary genetics analysis using maximum likelihood, evolutionary distance, and maximum parsimony methods, *Mol. Biol. Evol.*, **28**, 2731–9.
 26. Monden, Y., Naito, K., Okumoto, Y., et al. 2009, High potential of a transposon *mPing* as a marker system in *japonica* times *japonica* cross in rice, *DNA Res.*, **16**, 131–40.
 27. Kiran, U., Khan, S., Mirza, K.J., Ram, M. and Abidin, M.Z. 2010, SCAR markers: a potential tool for authentication of herbal drugs, *Fitoterapia*, **81**, 969–76.
 28. Cirillo, A., Gaudio, S.D., Bernardo, G.B., Galano, G., Galderisi, U. and Cipollaro, M. 2012, A new SCAR marker potentially useful to distinguish Italian cattle breeds, *Food Chem.*, **130**, 172–6.
 29. Tao, X., Gu, Y.H., Wang, H.Y., et al. 2012, Digital gene expression analysis based on integrated de novo transcriptome assembly of sweet potato [*Ipomoea batatas* (L.) Lam], *PLoS ONE*, **7**, e36234.
 30. Schafleitner, R., Tincopa, L.R., Palomino, O., et al. 2010, A sweetpotato gene index established by de novo assembly of pyrosequencing and Sanger sequences and mining for gene-based microsatellite markers, *BMC Genomics*, **11**, 604.
 31. Wang, Z., Fang, B., Chen, J., et al. 2010, *De novo* assembly and characterization of root transcriptome using Illumina paired-end sequencing and development of cSSR markers in sweet potato (*Ipomoea batatas*), *BMC Genomics*, **11**, 726.
 32. Brachi, B., Faure, N., Horton, M., et al. 2010, Linkage and association mapping of *Arabidopsis thaliana* flowering time in nature, *PLoS Genet.*, **6**, e1000940.
 33. Clark, R.M. 2010, Genome-wide association studies coming of age in rice, *Nat. Genet.*, **42**, 926–7.
 34. Huang, X., Wei, X., Sang, T., et al. 2010, Genome-wide association studies of 14 agronomic traits in rice landraces, *Nat. Genet.*, **42**, 961–7.
 35. Lam, H.M., Xu, X., Liu, X., et al. 2010, Resequencing of 31 wild and cultivated soybean genomes identifies patterns of genetic diversity and selection, *Nat. Genet.*, **42**, 1053–9.
 36. Li, Y., Huang, Y., Bergelson, J., Nordborg, M. and Borevitz, J.O. 2010, Association mapping of local climate-sensitive quantitative trait loci in *Arabidopsis thaliana*, *Proc. Natl. Acad. Sci. USA*, **107**, 21199–204.
 37. Nielsen, R., Paul, J.S., Albrechtsen, A. and Song, Y.S. 2011, Genotype and SNP calling from next-generation sequencing data, *Nat. Rev. Genet.*, **12**, 443–51.
 38. Yamamoto, T., Nagasaki, H., Yonemaru, J.I., et al. 2010, Fine definition of the pedigree haplotypes of closely related rice cultivars by means of genome-wide discovery of single-nucleotide polymorphisms, *BMC Genomics*, **11**, 267.