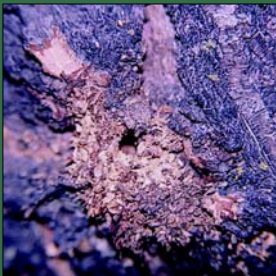


# 10 Top 10 Tree Problems in Northern Utah



## Aphids

- Common problem from late May through July
- Small pear shaped insects found on and under leaves
- Leaves may curl around insects
- Leaves will be sticky from a honeydew substance the aphids excrete; this honeydew substance may drip from the tree sticking to anything below the tree
- Tree may appear a little off color
- Wasps and ants may be attracted to the honeydew the aphids produce



## Borer Damage

- Prevalent throughout growing season
- More common on willow, poplar, ash, birch, aspen and locust
- Small borer holes and frass (sawdust-like material) may be found on limbs, trunk, and in crotches
- One or more branches may die
- Sparse growth throughout the tree is common
- Often the branch or stem will swell where infested



## Broad-leaf Weed Killer Damage (2,4-D)

- Frequently caused by herbicide applications made during hot weather (85°F+)
- Prevalent May through September
- Leaves curl or cup inward
- Veins become prominent
- Small stems may curl



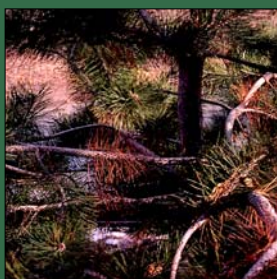
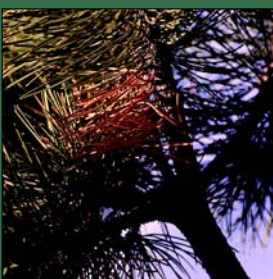
## Iron Chlorosis

- Prevalent throughout the growing season
- Veins remain green while the area between veins turns yellow
- Newer growth is usually more susceptible than older
- Excess soil moisture reduces the availability of iron
- In severe cases leaves can turn almost white, will be smaller than normal, and can have brown spots or edges and scorch in hot weather
- Some tree species (peach, silver maple, catalpa, pines) are more susceptible than others



## Mechanical Damage

- Damage around the base of trunk caused from trimmers, mowers, and other equipment
- Damage to the internal transport/vascular system from tight tie wires or ropes
- Bark may sluff off above the wound
- Tree will show restricted growth and may be weaker on one side
- Branches above wound may be weakened and show signs of stress



## Root Rot

- Tree is loose in the soil and if the trunk is rocked back and forth the soil around the crown may move
- Soil around roots may have a distinct odor of rot or mildew
- Roots are soft, and may be streaked internally with the colors of purple, brown or black
- Leaves may be yellow, sparse and drop early
- Skin of small roots may slip easily
- Few or no small white feeder roots

## Slime Flux

- It is a bacterial infection of the vascular system, fermenting the sap and causing pressure to build up under the bark
- Prevalent throughout the year
- Frequently affects poplars, elms, willows, and mulberries
- Slime, foam, or ooze exudes from the tree, sometimes associated with a wound
- The area may have a fermented putrid smell that attracts insects
- The oozing discolors the bark where it runs down the tree

## Summer Scorch

- Caused by very hot dry weather or a compromised root system
- Symptoms are most prevalent June through September
- Leaf margins and interveinal areas turn brown and die
- Southwest side of the tree and branches over driveways, roads, and other hard surfaces may be more affected
- Larger tree leaves may be more affected than smaller leaves
- Iron deficient trees scorch more easily

## Verticillium Wilt

- Caused by a soil born fungus that invades the vascular system reducing sap flow
- Affects tree throughout growing season
- One or many branches may wilt, become weakened, sparse or die
- When wood is cut into, a characteristic brown to gray streaking may be found
- The disease can be fatal

## Normal Needle Drop

- Common on many pines, arborvitae and other evergreens
- Interior needles turn brown
- New or outer needles remain green
- More common in fall but may occur anytime