

2015

Sustainability Service Learning at St. Johnsbury Academy

James Bentley
St. Johnsbury Academy

Follow this and additional works at: <https://scholarworks.umass.edu/necsc2015>



Part of the [Sustainability Commons](#)

Bentley, James, "Sustainability Service Learning at St. Johnsbury Academy" (2015). *NECSC Conference 2015*. 4.
Retrieved from <https://scholarworks.umass.edu/necsc2015/4>

This Article is brought to you for free and open access by the Sustainable UMass at ScholarWorks@UMass Amherst. It has been accepted for inclusion in NECSC Conference 2015 by an authorized administrator of ScholarWorks@UMass Amherst. For more information, please contact scholarworks@library.umass.edu.

Sustainability Service Learning at St. Johnsbury Academy

James Bentley

Director of Environmental Stewardship
St. Johnsbury Academy

welcome to our campus



- 1 Newell Hall
- 2 South Congregational Church
- 3 Ranger Hall
Headmaster's Office
Main Office
- 4 Colby Hall
- 5 Fuller Hall
- 6 Severance Hall
Resident Life Office
- 7 Headmaster's Residence

- 8 Faculty Residence
- 9 Waterman
- 10 Maintenance
- 11 Fairbanks Cottage
Admissions Office
Business Office
- 12 Tinker House
- 13 Brantview
- 14 The Barn
- 15 Streeter Hall

- 16 Mayo Center
Grace Stuart Orcutt Library,
Colwell Center for Global
Understanding, and
Student Center
- 17 Alumni Memorial
Gymnasium
- 18 Field House
- 19 Charles Hosmer Morse
Center for the Arts
- 20 Sheepcote
- 21 Straszko Center
at Graham's Place
Alumni Office

- 22 Cramton House
- 23 Christensen Hall
- 24 Green Dorm
- 25 Hilltopper Restaurant
- A Tennis Court
- B Burlingame Field
Baseball
- C Cary Field
Field Hockey
- D Soccer/Lacrosse Field
- E Fairbanks Field and
Ray Frey Track
Football / Track
- F Softball Field



What is a Stewardship Day?

Winter

Stewardship Day

- **Part I:** Learn about local environmental issues
- **Parts II and III:** Design and pitch a service learning project

Spring

Stewardship Day

- **Part IV:** Execute a service learning project that benefits sustainability in the local area

Stakeholder Engagement

Figure 1.1: Typical Primary and Secondary Stakeholders



AccountAbility. (2005). *From Words to Action: The Stakeholder Engagement Manual; Volume 1: The Guide to Practitioners' Perspectives on Stakeholder Engagement*. AccountAbility, United Nations Environment Programme, Stakeholder Research Associates Canada Inc.



Part I: Learn



Winter 2014 Stewardship Day Stations						
Advisories	Students	Station 1, 8:30-8:50	Station 2, 8:55-9:15	Station 3, 9:20-9:40	Station 4, 10:05-10:25	Station 5, 10:30-10:50
Dunnells/Meunier/Brothers	27	Ranger 208 - Eva Loomis	Ranger 215 - Joe Fox	Ranger 213 - Al Robertson	Ranger 212 - Ben Copans	Ranger 210 - Barbara Hatch
Choiniere/Ashmankas	20	Ranger 209 - James Bentley	Ranger 208 - Eva Loomis	Ranger 215 - Joe Fox	Ranger 213 - Al Robertson	Ranger 212 - Ben Copans
Rexhepi/Orozco	19	Ranger 210 - Barbara Hatch	Ranger 209 - James Bentley	Ranger 208 - Eva Loomis	Ranger 215 - Joe Fox	Ranger 213 - Al Robertson
Cunningham/Stark/Bugbee	19	Ranger 212 - Ben Copans	Ranger 210 - Barbara Hatch	Ranger 209 - James Bentley	Ranger 208 - Eva Loomis	Ranger 215 - Joe Fox
Murphy/McCaffrey	23	Ranger 213 - Al Robertson	Ranger 212 - Ben Copans	Ranger 210 - Barbara Hatch	Ranger 209 - James Bentley	Ranger 208 - Eva Loomis
Stanton/Fadden	19	Ranger 215 - Joe Fox	Ranger 213 - Al Robertson	Ranger 212 - Ben Copans	Ranger 210 - Barbara Hatch	Ranger 209 - James Bentley
Cummings/Kennedy	23	Ranger 108 - Tim Tierney	Ranger 117 - Marcia Gauvin	Ranger 113 - Maria Young	Ranger 112 - Kerry Obrien	Ranger 110 - Chris Rice
Eckhardt/Meranze	21	Ranger 110 - Chris Rice	Ranger 108 - Tim Tierney	Ranger 117 - Marcia Gauvin	Ranger 113 - Maria Young	Ranger 112 - Kerry Obrien
Quinn/Connolly	19	Ranger 112 - Kerry Obrien	Ranger 110 - Chris Rice	Ranger 108 - Tim Tierney	Ranger 117 - Marcia Gauvin	Ranger 113 - Maria Young
Wilbur/Bosco	19	Ranger 113 - Maria Young	Ranger 112 - Kerry Obrien	Ranger 110 - Chris Rice	Ranger 108 - Tim Tierney	Ranger 117 - Marcia Gauvin
Drew/Staffaroni/Sayarath	22	Ranger 117 - Marcia Gauvin	Ranger 113 - Maria Young	Ranger 112 - Kerry Obrien	Ranger 110 - Chris Rice	Ranger 108 - Tim Tierney

Reflect

13*

4. Which presenter left you most interested in the idea that he/she exhibited and you were challenged to do something about his/her findings or to join him/her in their work?

- Maria Young, Northwoods Stewardship Center
- Al Robertson, Lamoille Valley Rail Trail/Vermont Association of Snow Travelers (VAST)
- Eva Loomis, Vermont Technical College
- Joe Fox, St. Johnsbury Academy
- Tim Tierney, Kingdom Trails Association
- Barbara Hatch, St. Johnsbury Area Chamber of Commerce
- James Bentley, St. Johnsbury Academy
- Ben Copans, Agency of Natural Resources
- Chris Rice, St. Johnsbury Area Local Food Alliance
- Marcia Gauvin, St. Johnsbury School
- Kerry O'Brien, Caledonia County Conservation District

14

How did he/she achieve this? Name three reasons to support your answer.

Part II: Design a Project



Part III: Pitch a Project



Part IV: Do a Project



Coordinating Projects

Project Name and Location Will Be Here

Sophomore Stewardship Day, May 1, 2015

<p><u>Schedule</u> 8:15 Chapel in Fuller (Advisors take attendance) 8:45 (Fuller) Mrs. Morris dismisses advisories by bus→ Depart to Brantview Drive, pick up tools & lunches, get on busses. 9:00 Departure from campus 9:30-12:00 Site work 12:00-1:00 lunch 1:00-2:00 advisory activity OR more work. *** 2:00 return to campus</p>
--

<p><u>Advisories</u> Names of Advisors and Numbers will be listed here 2 Bus trips. Split up relatively evenly.</p>	<p><u>Nature of Work:</u> Example: You will be working on clearing brush from "skid roads" created in the past year. You will be mostly picking up sticks and moving them off of the road. In some cases, rakes may be helpful, though you will be mostly using your hands.</p>
<p><u>Tools for WHOLE group:</u> (Pick up & return on Brantview Drive.)</p> <ul style="list-style-type: none"> -6 steel rakes -40 pairs gloves -2 garbage bags for lunch waste 	<p><u>Bus #:</u> 26 (Details will be here. Ex: Dave L driving. This bus only has a capacity for 44 passengers. You will likely need to do 2 trips on the bus.)</p> <p><u>Lunches & Snacks:</u> -Pick up and on Brantview Drive -See separate advisory list for food preference & allergy info. Please grab appropriate lunches.</p> <p>*Some of your advisees may be helping out with Freshman Challenge or Capstone. See the advisory list for information</p>
<p><u>Contact Person:</u> Conni Morris (802) 424-6821</p>	<p>See map on back OR next page</p>

Why is it good for learning?

Academic **buzzwords:**

Authentic

Collaborative

Multi-disciplinary

Hands-on

Where does it fit?

Environmental Sciences

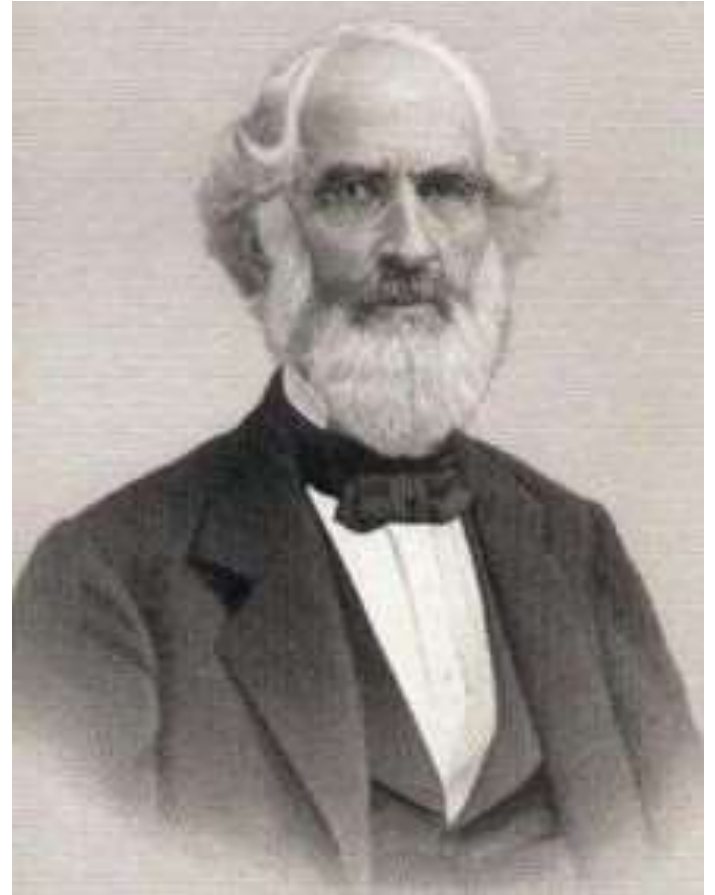
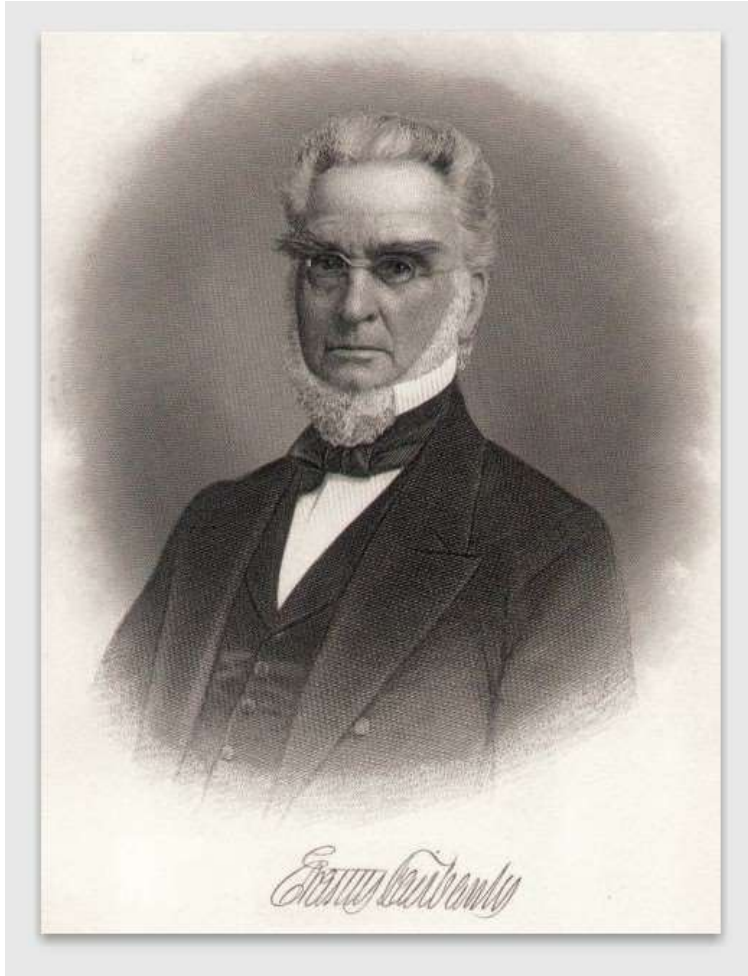
Communications

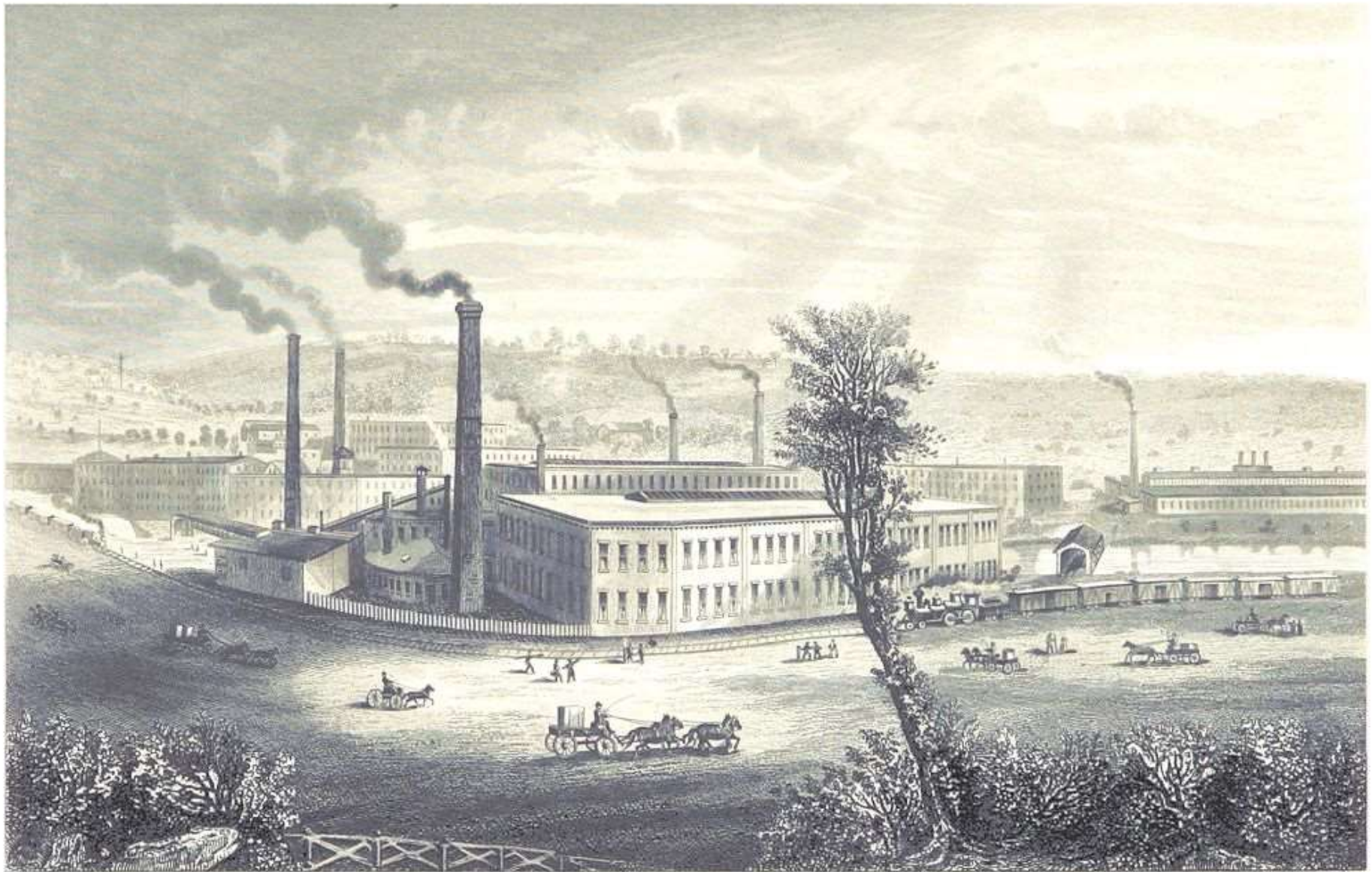
Service Learning

Stewardship Day Takeaways

1. Stakeholder engagement: include the community in what your program is doing and give local organizations the opportunity to engage with your program.
2. This model does not require a lot of resources.
3. Make it idiot-proof.
4. Build relevant, local, environmental literacy in your student body and involve them directly in local issues.
5. Give the students ownership and opportunities to lead.

Erastus and Thaddeus Fairbanks





E & T Fairbanks Scale Factory, St. Johnsbury, Vermont, in the 1800's

THE CALEDONIAN RECORD

Established 1837

11/6/2014 8:04:00 AM

St. Johnsbury: Students Investigate Life On River

Taylor Reed
Staff Writer

ST. JOHNSBURY -- Seventh and eighth graders at St. Johnsbury School are getting scientific with the Sleepers River.

The youngsters weekly trek behind the school with Ziploc protected notebooks to document the river's vital signs including depth, temperature, turbidity, bacteria content, flow rate, and macroinvertebrate life like crayfish and stoneflies. About 135 students are involved.

Seventh graders Max Jones and Damion Marcy on Wednesday were hunting for macroinvertebrates. Jones found a stonefly.

"Most of the macroinvertebrates depend on water's healthiness," Jones said while searching rocks. "If you have a dragonfly or mayfly or stonefly, you've got some healthy water. I think we have some pretty good water here."



[+ click to enlarge](#)

PHOTO BY TAYLOR REED

St. Johnsbury School students Max Jones, left, and Damion Marcy, search for macroinvertebrates in the Sleepers River on Wednesday.





Stakeholder Engagement

Figure 1.1: Typical Primary and Secondary Stakeholders



AccountAbility. (2005). *From Words to Action: The Stakeholder Engagement Manual; Volume 1: The Guide to Practitioners' Perspectives on Stakeholder Engagement*. AccountAbility, United Nations Environment Programme, Stakeholder Research Associates Canada Inc.

James Bentley
jbentley@stjacademy.org

