

## African Diaspora Archaeology Newsletter

---

Volume 8  
Issue 1 May 2005

Article 1

---

5-1-2005

### Rediscovering New Philadelphia: Race and Racism on the Illinois Frontier

Paul A. Shackel  
*University of Maryland*, pshackel@umd.edu

Terrance J. Martin  
*Illinois State Museum*, tmartin@museum.state.il.us

Joy D. Beasley

Tom Gwaltney

Follow this and additional works at: <https://scholarworks.umass.edu/adan>

---

#### Recommended Citation

Shackel, Paul A.; Martin, Terrance J.; Beasley, Joy D.; and Gwaltney, Tom (2005) "Rediscovering New Philadelphia: Race and Racism on the Illinois Frontier," *African Diaspora Archaeology Newsletter*: Vol. 8 : Iss. 1 , Article 1.  
Available at: <https://scholarworks.umass.edu/adan/vol8/iss1/1>

This Articles, Essays, and Reports is brought to you for free and open access by ScholarWorks@UMass Amherst. It has been accepted for inclusion in African Diaspora Archaeology Newsletter by an authorized editor of ScholarWorks@UMass Amherst. For more information, please contact [scholarworks@library.umass.edu](mailto:scholarworks@library.umass.edu).

# Illinois Antiquity

## PRESIDENT'S POINTS

Why archaeology? As members of IAAA and readers of *Illinois Antiquity* and probably other publications that share a common theme, why do we do it? Like the light that attracts a bug – what is it that we share in our makeup that attracts us to archaeology?

Some of you may be left-brained enough to see the art in the stone, bone, wood, shell, fiber, and other craftwork that has been found. Thus you are an admirer of these artifacts because they touch something in you that says they are pretty. Perhaps you see a part of your ancestry in the handiwork of a weathered flake, recognized as having been very sharp thousands of years ago when it was used to butcher an animal, thus allowing a long- lost relative to survive to the next meal. Maybe you like to feel the artifact in your hand and imagine how it must have felt to the maker. In finding the right “feel” you get an insight as to the use of the tool.

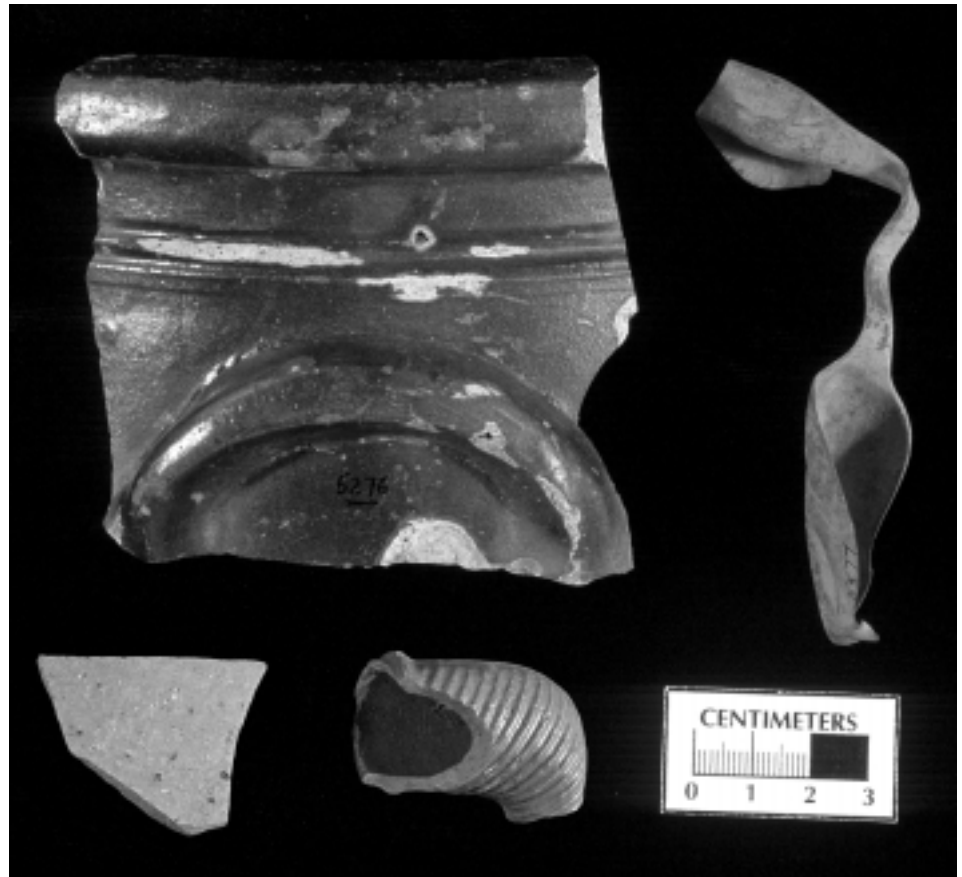
If you are like me you want to know how these things are made. You read about the crafts and attend demonstrations for flint knapping, cordage making, engraving, fire making, and any of the many other crafts that were the fabric of life many years ago. Through the technology you get an idea as to how time was spent and then thoughts of family, food gathering, making shelter, story telling, visiting with neighbors, religion, losing loved ones, ...Life of one time period becomes similar to ours and yet very different too.

Can we become one with our past? Maybe that is what brings us together through IAAA and *Illinois Antiquity*.

*Al Lookofsky*

## ILLINOIS ASSOCIATION FOR ADVANCEMENT OF ARCHAEOLOGY

Member of the Society for American Archaeology Council of Affiliated Societies



## CONTENTS

### *REDISCOVERING NEW PHILADELPHIA: RACE AND RACISM ON THE ILLINOIS FRONTIER*

*By Paul A. Shackel, Terrance J. Martin, Joy D. Beasley, and Tom Gwaltney . . . 3*

### *ANOTHER MISSISSIPPIAN SOLSTITIAL OBSERVATORY ON FOUNTAIN BLUFF, JACKSON COUNTY, ILLINOIS*

*By Jim Jung . . . . . 8*

*FIELDWORK OPPORTUNTIES . . . . . 10*

*SOCIETY BUSINESS . . . . . 14*

## IAAA CHAPTER CONTACTS AND MEETING DATES

### Cahokia Archaeological Society:

Meets at Cahokia Mounds Interpretive Center, Collinsville, IL; 7:30 p.m. the third Thursday of the month except July and August. Contact Gloria Iseminger, 414 N. Morrison, Collinsville, IL 62234.

### Central Wabash Archaeological Society:

Meets at north end of Lincoln Trails College, Robinson, IL; 7:00 p.m. the first Monday of the month. Contact Vera Kirts, 304 N. Division St., Oblong, IL 62449.

### Chicago Archaeological Society:

Meets at Evanston Public Library, 1703 Orrington Ave., Evanston, IL at 3:00 p.m. the 4th Sunday of the month. Contact Robert Stelton, 12 S 675 Knoebel Dr., Lemont, IL 60439.

### East Central Illinois Archaeological Society:

Meets at Urbana Free Library the third Sunday of the month. Contact Brenda Beck, 3002 E. Oaks Rd., Urbana, IL 61802.

### Illinois Valley Archaeological Society:

Meets at Dickson Mounds Museum, Lewistown, IL at 7:00 p.m. the first Tuesday of the month. Contact Alan Harn (309) 547-3721.

### Kaskaskia Archaeological Society:

Meets at Shelbyville Visitors Center, Shelbyville, IL; 7:00 p.m. standard time (7:30 daylight savings time) the third Monday of the month. Contact Laura Mentzer, Rte 1, Box 61, Assumption, IL 62510.

### Mississippi Valley Archaeological Society:

Meets at Salem Lutheran Church, Mendon, IL; 7:00 p.m. standard time (7:30 daylight savings time) the third Wednesday of the month.

### Quad Cities Archaeological Society:

Meets at the Tom-Tom Room, Blackhawk State Park; 7:30 p.m. the last Tuesday of the month. Contact Ferrel Anderson, 1923 E. 13th St., Davenport, IA 52803.

### Sauk Trail Archaeological Society:

Contact Nancy Marcotte, 6317 Anvil Rd., Crystal Lake, IL, 60012 or Margaret Lindsley, 2 S. 526 Arrowhead, Wheaton, IL 60187.

### South Suburban Archaeological Society:

Meets at the Marie Irwin Community Center, 18120 Highland Ave., Homewood, IL; 7:30 p.m. the third Thursday of the month. Contact Barbara McDonough, 18442 Gottschalk, Homewood, IL 60430.

### Three Rivers Archaeology Society:

Meets at the Stone Church, Route 75 & Union Sts., Rockton, IL; the second Monday every month.



## FROM THE EDITOR . . .

The New Philadelphia site in Pike County has earned national recognition, even before the first full season of field investigations at this nineteenth-century town site. Paul Shackel, Terrance Martin, Joy Beasley, and Tom Gwaltney collaborated on an article that explains the background and significance of the town, which was incorporated 1836 by Frank McWorter, a former slave from Kentucky. They outline the history of New Philadelphia and recent systematic surface surveys that delineated areas for further investigations beginning this summer. Our thanks to the authors for introducing us to an extraordinary site that we will be following closely.

New Philadelphia is just one of many locations where students can gain field experience this summer. We have nine programs included in our annual fieldwork listings, some with multiple opportunities geared toward avocational participants. Lack of space precluded printing all information, so please get in touch with the program director for any project in which you are interested.

Also in this issue, Jim Jung revisits the idea of southern Illinois rock shelters as the location of Mississippian period solstice observatories. We include a follow-up to his article from the July, 1996 *Illinois Antiquity*. Many thanks to the author for sharing his thoughts and photos from his investigations.

Be sure to set aside a little time to travel to Champaign-Urbana on May 1 for the IAAA annual meeting. The meeting information and a registration form appear on page 15. You can meet fellow members, find out what's happening in archaeology around the state, and visit a new museum on the University of Illinois campus. Hope to see everyone there!

*Alice Berkson*

## ON THE COVER . . .

A selection of Historic Period artifacts from New Philadelphia. Photo courtesy of the Illinois State Museum.

*Illinois Antiquity* is published quarterly by the Illinois Association for Advancement of Archaeology. Editor, Alice Berkson; Asst. Editors, Kelvin W. Sampson (layout and design) Duane Esarey and Karen M. Sank (copy and circulation).

Material to be published should be submitted to Editor, *Illinois Antiquity*, 904 Mayfair Road, Champaign, IL 61821, e-mail: berksonalice@insightbb.com, Facsimile: (217) 398-1952. Quarterly issues are scheduled in February, May, September, and De-

ember. Submission deadlines are January 10, April 15, August 10, and October 15. Material may be prepared using a word processing program and submitted, either accompanied by a disk or through electronic mail. Artifact photos should be accompanied by a scale or label of size. Citations should be in a "References Cited" section rather than in footnotes.

*Illinois Antiquity* is distributed to the members of the Illinois Association for Advancement of Archaeology. Items published in *Illinois*

*Antiquity* reflect the views of the authors. Publication does not imply IAAA endorsement. Subscription information is presented on the back cover. Bulk mailing prohibits return of undelivered issues. Please send address corrections to both Editor and IAAA Secretary. For more information contact IAAA Secretary Betsy Lookofsky, 420 N. Broadway, Shelbyville, IL 62565.

ISSN 8756-0070  
copyright 2004

## **REDISCOVERING NEW PHILADELPHIA: RACE AND RACISM ON THE ILLINOIS FRONTIER**

**By Paul A. Shackel, Terrance J. Martin, Joy D. Beasley, and Tom Gwaltney**

The story of New Philadelphia, Illinois is nationally significant since it is the earliest known incorporated town by an African American in the antebellum United States. Its founder, Frank McWorter, hired out his time and established his own saltpeter mining operation while enslaved in Kentucky. With the money he earned he purchased his freedom, and in 1836 McWorter acquired lands in a sparsely populated area known as Pike Country, Illinois, situated in the rolling hill region between the Illinois and Mississippi Rivers (Figure 1). McWorter incorporated a town, subdivided it and sold lots. He used the revenue from these sales and from farming to purchase family members out of bondage (Walker 1983). New Philadelphia existed for almost 100 years as an integrated place.

During several long weekends in the fall of 2002 and the spring of 2003 the University of Maryland, Illinois State Museum, University of Illinois-Springfield, HistArc Consultants, and the New Philadelphia Association collaborated in a field survey to locate and identify the town of New Philadelphia (Beasley and Gwaltney 2003). This effort, initiated by Vibert White (UIS), and supported by the above-mentioned organizations, is helping to reveal a significant portion of Illinois' historic past and it provides insight into how race and racism can be discovered on the Illinois landscape.

The town was abandoned by the 1940s and all that exists today are a few foundations in fields covered with sod, prairie grass and wheat. Without any visible sign of preexisting landscape features, the research team used historic and topographic maps and aerial pho-

tographs to determine the location of the town. Initial deed research (Whitt 2000) indicates that all of the lots were sold many times by both blacks and whites. Census data analysis (King 2003) indicates that as many as 200 people lived in the town in the post-Civil War era. The town existed as an integrated entity into the twentieth century. After the Illinois frontier closed, racism set limits to New Philadelphia expansion. Businessmen from Pike County lobbied to have a new railroad placed adjacent to another community. By 1885 the town was unincorporated, and by the early twentieth century only a few houses survived. Today, all signs of the town have been removed from the landscape and the fields are planted in prairie grass and wheat.

### **NEW PHILADELPHIA**

The founding and incorporation of

the town of New Philadelphia in west-central Illinois by Free Frank, a freed African American, in 1836 is both a compelling and heroic story. Historian Juliet Walker's (1983) biography of Free Frank describes that while he was enslaved he also worked in the saltpeter mines of Kentucky when he did not have plantation obligations. He earned enough money to purchase his freedom from his master and eventually traveled westward with his wife and a few of his freed children to Pike County, Illinois. The McWorters were the first settlers in Hadley Township.

While African Americans developed towns before 1836 (see Cha-Jua 2000), New Philadelphia is the earliest known town incorporated by an African American. Both Euro-Americans and African Americans purchased

property in New Philadelphia and moved to the community. The small rural integrated town boomed in the 1860s. Because of Walker's (1983) research, we know a significant amount about Frank McWorter's experience with New Philadelphia from its founding until his death in 1854. The goal of this collaborative New Philadelphia project is to provide a more in-depth social history of the town, documenting the rise of the town from 1836 through its demise during the Jim Crow era. This project is building on Walker's research and will look at the histories of all of the residents of New Philadelphia, describe social relations between blacks and whites through the early twentieth century, and place this work in a larger context of small rural nineteenth-century black and bi-racial towns. Enhancing the story of New Philadelphia will contribute an important episode to our national memory.

The New Philadelphia story is important because it adds a new dimension to the study of black settlement and inter-racial living in the United States. Before the American Civil War, most free blacks lived in urban areas and suffered deteriorating social and economic conditions. They were restricted to few opportunities and often had irregular and/or seasonal employment. "They had a low incidence of property ownership in most cities, and were universally described by contemporary observers as in large part poverty stricken" (Curry 1981:122). Blacks in urban areas increasingly called for reforms. At the same time, the *American Colonization Society* aggressively promoted the relocation of free blacks to Liberia.

In response to the promotion of resettlement in Africa, during the 1830s the *Organized Negro Communities Movement* proposed that separate agricultural settlements should be established for free blacks in undeveloped rural areas. The organization also encouraged the migration of African Americans to the western frontiers. Both of these proposals would allow African Americans the opportunity to develop new economic opportunities for themselves (Pease and Pease 1962:19-34).

In 1819 the first manumission colony in Edwardsville, Illinois stood as one of the most prominent settlements of the *Organized Negro Communities Movement*. The Edwardsville Settlement operated as a paternalistic endeavor by Edward Cole, who freed



Figure 1. Location of New Philadelphia

thirteen slaves and purchased land so that they could develop farms. Other paternalistic settlements developed following Cole's lead, although many of these settlements failed, in-



Figure 2. 1836 plat of New Philadelphia overlaid on a recent aerial photograph of the site. (Courtesy, HistArc, Consultants, LLC).

cluding Edwardsville. These planned agricultural communities usually consisted of farms too small to be self-sufficient and the communities were undercapitalized (Pease and Pease 1962:23).

Other settlements, however, did succeed. Sundiata Keita Cha-Jua (2000) describes the settlement of Brooklyn, Illinois, founded in 1830 by several black families adjacent to St. Louis, Missouri. Five white settlers platted the area in 1837, and citizens finally incorporated the town after the Civil War. Because of racism and industrialists' unwillingness to establish businesses in the town, Brooklyn struggled financially through the beginning of the twentieth century. In another settlement, Reverend Lewis Woodson believed that African Americans should establish separate communities, separate businesses, and separate churches. His father's settlement in Jackson County, Ohio in 1830 served as a prime example that showed that separate black communities could survive and prosper. By 1838 it was "socially independent" (Miller 1975:315).

Black Codes established before the Civil War often restricted the freedoms of African Americans, and they frequently were left with no choice but to work on farms or perform menial tasks. Although a vacuum created by the expanding frontier allowed people to take risks on entrepreneurial activities, blacks were not always on equal footing with white settlers. Being a free African American in southern Illinois met some resistance from the local

populations. For instance, about 50 miles south of New Philadelphia in Alton, Elijah Lovejoy ran his abolitionist newspaper and founded the Illinois Anti-Slavery Society. An angry mob attacked his newspaper in 1837, one year after the founding of New Philadelphia. They killed Lovejoy while he tried to protect his press (Dillon 1961; Beecher 1838; Tanner 1881).

Only thirteen miles east of New Philadelphia in the town of Griggsville, violence broke out after an 1838 anti-slavery meeting. Residents signed a petition calling for the abolition of slavery in Washington, D.C. and for rejecting the admission of Texas into the Union as a slave state. In reaction to this meeting, pro-slavery citizens met at the local grocery and they passed a resolution "that the parties who signed this obnoxious petition should be compelled to erase their signatures from it" (Chapman 1880:516). The pro-slavery mob seized the document and "then waited upon those parties and demanded of them that they should immediately erase their names" (Chapman 1880:516). Hearing this news, the people of Griggsville and the surrounding country confronted the pro-slavery gathering. They said that they "must disband, or else they would be dealt with harshly" (Chapman 1880:516).

A rural market town like New Philadelphia in the heart of this racial tension could offer African Americans an alternative to isolated rural farmsteads and the hostile environment of urban ghettos, although the town sat less than 25 miles east of the Mississippi River and the slave state of Missouri. While situated in a free state, once the Illinois frontier closed, racism set limits to New Philadelphia's economic expansion (see Davis 1998). In 1853 the Pike County Rail Road Company, made up of prominent

farmers and businessmen in the area, met to create a route for a new railroad line, although it would not be built until after the Civil War. The interests of New Philadelphia were not represented on the board. The route for the Hannibal & Naples Railroad came from the east, and if it continued in a direct easterly direction it would have intersected New Philadelphia. Instead, the railroad company routed the line to New Salem about a mile north of New Philadelphia. In order to reach New Salem, the line looped north and around New Philadelphia. When the line reached a point west of New Philadelphia, it swung south to a point directly west of the town, and it again ran in an east to west direction until it reached the town of Barry (Pike County Railroad 1853; Chapman 1880:904; Matteson 1964:9).

While New Philadelphia existed as a small rural town through the 1850s, it boomed in the 1860s as newly freed African Americans joined the community, making a new start in life after emancipation. As a commitment to educating all of the citizens of the community, the town supported an integrated one-room schoolhouse from 1874 until it closed in the 1940s (Matteson 1964:19-20; Pike County Illinois Schools 1996:153). The town population dwindled quickly in the 1870s after the railroad company constructed the line through a more northern town.

New Philadelphia was finally unincorporated in 1885. Oral histories of former residents performed in the early 1960s indicate that an unincorporated New Philadelphia survived as an integrated town into the twentieth



Figure 3. Terrance Martin of the Illinois State Museum and Lisa Winhold, now a graduate student in zoology at Eastern Michigan University, record and collect artifact information. (Courtesy, HistArc, Consultants, LLC)

century with only a few households (Matteson 1964). Today, nothing remains of the community except a few foundations and a grave-

yard that contains the headstones of some of the former community residents. The town has all but disappeared from the landscape. New Philadelphia is an archaeological site covered by prairie grass, sod, and wheat. The few exposed foundations serve as a reminder of a great achievement in the African-American experiment, a sojourn toward self-determination, freedom and the will to exist. The history of the entire town, black and white, from the 1830s through 1920s, waits to be rediscovered with the objective of making this story a part of our national heritage.

### THE PEDESTRIAN SURVEY

In 1996 a group of Pike County citizens formed the New Philadelphia Association (NPA) as a non-profit group in order to strive for the preservation of the site. In 2001 they invited the University of Illinois at Springfield (UIS) to provide scholarly oversight for the study of the former community. In turn, the NPA and UIS invited the University of Maryland (UM) and the Illinois State Museum (ISM) to organize an archaeological survey to find and document the exact location of the former town of New Philadelphia in order to help broaden the scope of research.

In the fall 2002 and spring 2003, the collaborative project to rediscover New Philadelphia began with a pedestrian archaeological survey. The survey had two goals; 1) to determine that archaeological resources exist at the New Philadelphia site, and 2) to identify surface concentrations that could co-register with the known 1836 New Philadelphia plat (Figure 2). These areas of concentration provide important clues that indicate the town lots occupation and functions. Census and deed data shows that both domestic and work functions occurred within the town's boundaries. Oral histories also indicate that New Philadelphia stood as a small hamlet into the early twentieth century. The results of the survey provide information that will guide further archaeological explorations.

Prior to the survey the archaeology team decided to have lands that have been under agriculture plowed and disked. While the local farmers practice no-till agriculture today, two local farmers still owned a moldboard plow and they helped with the process. The plowing broke up the prairie grasses and sod,

which covered areas formerly under cultivation. This process generally provided greater than 75 per cent ground visibility over the majority of the plowed field. Subsequent precipitation and weathering improved artifact visibility. The plowing allowed for about 26.5 acres (10.6 ha), or approximately 63 per cent of the 42-acre (16.8 ha) site, to be exposed (Beasley and Gwaltney 2003).



Figure 4. Map showing the distribution of all historic artifacts found in the New Philadelphia pedestrian survey. (Courtesy, HistArc, Consultants, LLC).

Two areas were not plowed. The first, in the northern portion of the site, contained some historic foundations and local informants claimed that the area was never plowed (Figure 2). The archaeology team did not want to impact areas that may not have been previously plowed, so we decided not to plow and disk this area. Also, at the time of the survey the project did not receive permission to perform survey work on property situated in the southern portion of the site. Plowing did not occur where terracing had occurred, in tree-covered areas, and in roadways (Beasley and Gwaltney 2003).

The volunteer effort for the New Philadelphia pedestrian survey was coordinated by University of Illinois-Springfield and the Illinois State Museum. These institutions coordinated the efforts of 31 student volunteers from UIS, Illinois College, Hannibal-LaGrange College, and Lincoln Land Community College over the three separate weekend expeditions. Members of the New Philadelphia Association provided necessary logistical support. Archaeologists conducted the survey over three long weekends: October 11-14 and November 8-10, 2002, and March 14-16, 2003.

The volunteers and archaeologists formed a line at the edge of a plowed field, with each team member spaced approximately 5 ft. (1.5m) apart. The survey team systematically walked over the survey area in transects, marking each historic period and prehistoric artifact visible on the ground with a flag. Once a transect or survey area had been completed, the teams regrouped and systematically surveyed the adjacent transect or survey area. The process was repeated until the team surveyed the entire project area.

Archaeologists then collected the flagged artifacts (Figure 3). Working in teams of two to four members, archaeologists systematically collected each flagged artifact and accounted for the artifacts on a log sheet. Archaeologists then assigned a unique number to the flag marking the collected artifact. These flagged "targets" were then surveyed sequentially using an electronic total station and each target's spatial location was recorded with an electronic data recorder. The site-specific spatial location information was annotated with the artifact's unique provenience ID assigned by the artifact collection team. The spatial location and annotation recorded for each target were downloaded from the data record to a computer for translation to and analysis by geographic information system (GIS) (Beasley and Gwaltney 2003).

### RESULTS

A total of 7,073 historic period and prehistoric artifacts were identified, collected, and mapped over the 10-day survey. Domestic artifacts include small ceramic sherds, bottles, drinking vessels, smoking pipes, buttons, doll parts, horseshoes, miscellaneous iron objects and small animal remains. Architectural materials consist of brick fragments, nails, and window glass. At the Illinois State Museum the artifacts have been cleaned and labeled. About 83 per cent (5,895 items) are historic period artifacts and 15 per cent (1,076 items) are prehistoric artifacts. About two per cent, or 102 artifacts, could not be specified as cultural or non-cultural. At this point in the analysis process the materials have been identified into nine broad categories. They include historic period ceramics (2,320 items, 32%), curved glass (1,031 items, 15%), buttons and toy parts (28 items, 0.4%), flat glass (1,093 items, 15%), brick/plaster/mortar (328 items, 5%), nails/spikes (185 items, 2.6%), other historic period artifacts (910 items, 13%), prehistoric artifacts (1,076 items, 15%), and unidentified artifacts (102 items, 2%) (Beasley and Gwaltney 2003).

The survey results provide a general sense of the areas settled at New Philadelphia. In addition, the historic period materials are found in dense concentrations and indicate the location and remains of domestic houses and

commercial enterprises (Figure 4). All of the historic period household sites appear to cluster near the center of town on about 25 per cent



Figure 5. A distribution of domestic artifacts. The squares are doll parts, the hexagons are buttons, the triangles are curved glass, and the circles are ceramics. (Courtesy, HistArc, Consultants, LLC).

of the land close to the town's major road. This concentration is located on the highest elevation in town.

While Frank McWorter lived on a parcel just north of New Philadelphia, it is clear that he and his family kept close ties with the town. His son, Squire McWorter, lived on the lot that is indicated by the southernmost cluster of artifacts and just south of the road running in an east-west direction (Figures 5 and 6). Other black and white families are known to have lived along the main road in the northern portion of the town along the road running in a north-south direction. Many of the other lots were never settled, although deed records indicate that every lot changed hands at least several times over the century. McWorter planned on building a church on the property, but that idea never materialized. It appears that others purchased New Philadelphia lots and used the lands as extensions of their houses for gardening and/or other utility functions. We can also assume that others purchased the lands to speculate on the arrival of the railroad. When the road did not arrive, the town was unincorporated and the eastern section of the town was returned to agriculture.

The archaeological survey at New Philadelphia provides a good starting point for future in-depth excavations and analysis. One of the goals of this project is to list the New

Philadelphia site on the National Register of Historic Places. National Register status will allow this collaborative effort to pursue additional avenues of funding for further research. The analysis will also provide information so that the project can plan a more in-depth and long-term archaeology project (Figure 7).

Many studies in African-American archaeology and material culture have been concerned with the pre-emancipation era. An archaeological study of New Philadelphia will provide the opportunity to examine the development of an integrated community on the western frontier during the pre- and post-emancipation eras. Racism probably influenced the social and economic interactions between residents within the community as well as with people who lived outside of the town. The archaeological material from New Philadelphia will reveal aspects of life there that cannot

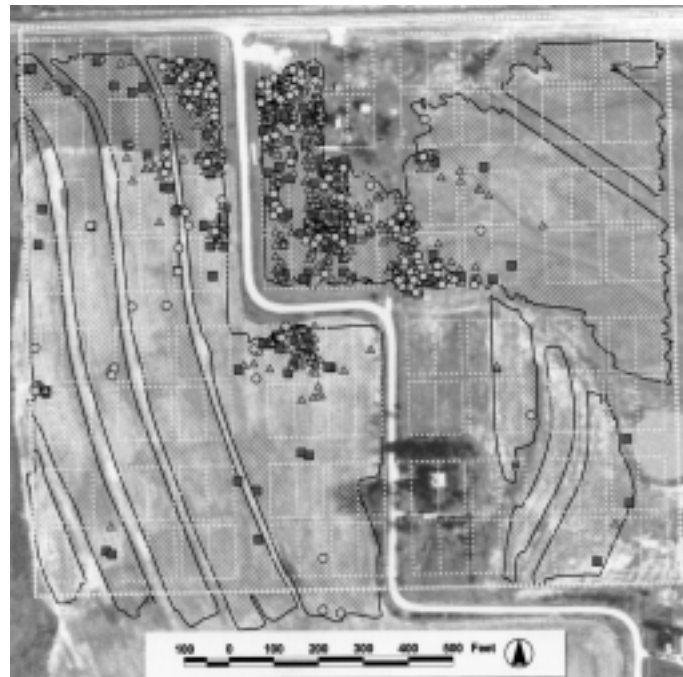


Figure 6. A distribution of architectural artifacts. The red squares are brick/plaster/mortar, the blue triangles are flat glass, and the yellow circles are nails and spikes. (Courtesy, HistArc, Consultants, LLC).

be found in historical records. It will be important to examine the material culture record and the social history of the town and look for variability in the archaeological record. We may see how the material culture may have changed as racism influenced the development of New Philadelphia and the everyday lives of its inhabitants. The town's rediscovery by a dedicated team of archaeologists and historians, and the analysis and reporting of these discoveries, helps show how its story is an important part of our national heritage.

The National Science Foundation's Research Experiences for Undergraduates (NSF-REU) has funded three summers of excavations and laboratory work for this project. Our goal is to incorporate students in the research design, data collection, and analysis of the archaeological materials. The University of Maryland will be the host institution with substantial cooperation from the Illinois State Museum and the University of Illinois at Urbana-Champaign. The New Philadelphia Association, a local non-profit group, and the University of Illinois at Springfield will provide support. This cooperative program brings various professionals and community members together, and it will help enhance the quality and availability of undergraduate research experiences.

The NSF-REU program will accept 9 students for 10 weeks for the summers of 2004-2006 (For an application follow the links <http://www.heritage.umd.edu>). We will recruit a diversified pool of talented students

who will participate in all aspects of the project. A significant proportion of the students will come from outside the host institution. Our goal is to increase the participation of women and underrepresented minorities. Regional colleges and universities will be another of our target areas since many of these schools have limited research programs.

The program will be divided into three components. First, a one-week orientation and background session that includes the geophysical testing of archaeological sites; a four week archaeology field season collecting data; a five week session at ISM scientifically analyzing material culture

and archaeobiological data. Students will work in a collaborative effort while also receiving mentorship from an interdisciplinary team of professionals. Students will receive training in archaeological field methods, artifact iden-



Figure 7. Greg Butterfield of Illinois College working on the artifacts from the New Philadelphia site at the ISM Research and Collections Center. (Courtesy, Illinois State Museum).

tification, and cataloguing, as well as in faunal and floral analysis.

#### ACKNOWLEDGEMENTS

Many people and organizations are responsible for the success of this survey. While Paul Shackel (Center for Heritage Resource Studies, University of Maryland) coordinated the project, HistArc carried out the field survey under the direction of Joy Beasley and Tom Gwaltney in October and November 2002 and March 2003. Their dedication and hard work made the field survey an overwhelming success. The National Park Service now employs Beasley. Illinois State Museum (Terry Martin) and the University of Illinois at Springfield (Vibert White and Lynn Fisher) coordinated the volunteer effort and also provided logistical support for the project.

The volunteers for the field survey included: Heather Bangert, Erin Brand, Greg Butterfield, Roberta Codemo, Jessica Dix, Brandon Eckhoff, Sarah Edmiston, Cinda Farris, James Farris, Sridhar Gaddam, Justina Garcia, Jeff Gheens, Tammy Hamilton, Michelle Huttes, Fran Knight, Ellen Marr, Carol McCartney, Norvel McIntyre, Donald McWilliams, Elizabeth Netherton, Terry Ransom, Lisa Schnell, Julie Senger, Tim Sorrill, Mary Thomas, Sreekanth Vudumula, Debbie White, Heater Wichens, Seth Wilson, Lisa Winhold, Linda Woods, and Carolyn Wrightam.

The laboratory work was conducted at the Illinois State Museum and supervised by Terry Martin. These volunteers included: Jim Farris, Roberta Codemo, Greg Butterfield,

Don McWilliams, Tim Sorrill, Jennifer Schwarz, Carolyn Wrightam, Lisa Winhold, Tiffany Winhold, Julie Senger, Brianne Senger, Mary Thomas, and Kati Fay. Jim Farris and Debbie White have worked with Michael Wiant and Lynn Fisher on the New Philadelphia lithic assemblage.

Our thanks to Mayor Pat Syrcle and the community of Barry, Illinois for making us welcome. Roger Woods helped with the preparation of the site before the survey. Our deep appreciation goes to Marvin and Pat Likes. Marvin and his survey team at Likes Land Surveyors provided support and they laid out the town grid from the historic plat. Carolyn Dean was stationed at the tent ensuring that the archaeology team had all that we need. Larry and Natalie Armistead opened their homes to the survey team. We appreciate their willingness to allow us to survey their property. We extend a special thanks to Mr. Phil Bradshaw, president of the New Philadelphia Association. He supplied logistical support and ensured that all of our needs were met for the survey.

#### REFERENCES

- Beecher, Edward  
1838 *Narratives of the Riots at Alton: In Connection with the Death of Rev. Elijah P. Lovejoy*. George Holton, Alton, IL.
- Beasley, Joy and Tom Gwaltney  
2003 *New Philadelphia Project Field Survey: Interim Report. Phase I Archaeology at the Historic Town of New Philadelphia, Illinois*. HistArc Consultants, LLC, Baltimore, MD.
- Cha-Jua Sundiata Keita  
2000 *Americas First Black Town, Brooklyn, Illinois, 1830-1915*. University of Illinois Press, Urbana, IL.
- Chapman, Charles C.  
1880 *History of Pike County, Illinois*. C.C. Chapman, Chicago, IL.
- Curry, Leonard P.  
1981 *The Free Blacks in Urban America, 1800-1850: The Shadow of the Dream*. University of Chicago Press, Chicago, IL.
- Davis, James E.  
1998 *Frontier Illinois*. Indiana University Press, Bloomington, IN.

Dillon, Merton L.  
1961 *Elijah P. Lovejoy: Abolitionist Editor*. University of Illinois Press, Urbana, IL.

King, Charlotte  
2003 *Passed by Time: America's All-Black Towns*. Honor's Thesis. Department of Anthropology. University of Maryland, College Park, MD.

Matteson, Grace  
1964 *"Free Frank" McWorter and the "Ghost Town" of New Philadelphia, Pike County, Illinois*. Pike County Historical Society, Pittsfield, IL.

Miller, Floyd J.  
1975 *The Search for Black Nationality: Black Emigration and Colonization, 1787-1863*. University of Illinois Press, Urbana, IL.

Pease, William and Jane Pease  
1962 *Organized Negro Communities: A North American Experiment*. *Journal of Negro History* 47(1):19-34.

Pike County Railroad Company  
1853 *Record of the Pike County Rail Road Company*. Record no. SC2287. Illinois State Historical Society, Springfield, IL.

Pike County Illinois Schools  
ca. 1996 *Pike County Illinois Schools, 1823-1995: History and Pictures*. Pike County Historical Society, Pittsfield, IL.

Tanner, Henry  
1881 *The Martyrdom of Lovejoy—An Account of the Life, Trials, and Perils of Rev. Elijah P. Lovejoy Who was Killed by a Pro-Slavery Mob at Alton, Illinois the Night of November 7, 1838*. Fergus Printing Co., Chicago.

Walker, Juliet E. K.  
1983 *Free Frank: A Black Pioneer on the Antebellum Frontier*. University Press of Kentucky, Lexington, KY.

Whitt, Robin  
2000 *New Philadelphia: A Case Study of a Free African-American Settlement and the Underground Railroad in Pike County, Illinois*. Honor's Thesis. Department of Anthropology. University of Maryland, College Park, MD.

*Paul A. Shackel is Professor of Anthropology and Director of the Center for Heritage Resource Studies at the University of Maryland; Terrance J. Martin, Curator of Anthropology, Illinois State Museum; Joy D. Beasley, Cultural Resource Program Manager, Monocacy National Battlefield, National Park Service; and Tom Gwaltney, President, arGIG Consultants, LLC.*