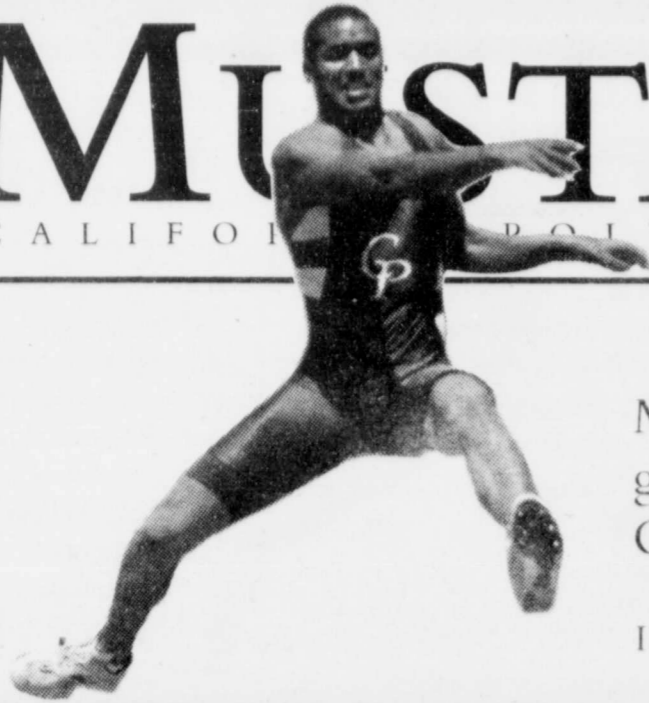


## TODAY'S WEATHER

High 71°

Low 50°

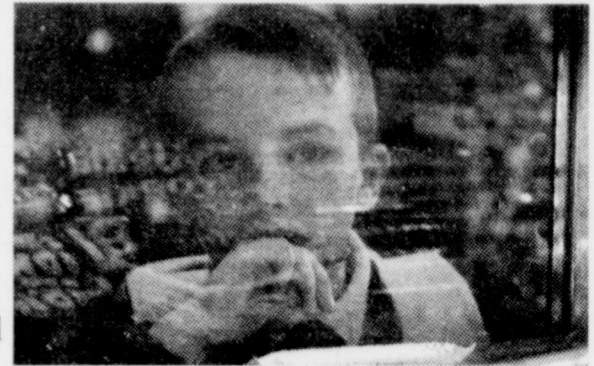


Mustang track and field goes to the Big West Championship

IN SPORTS, 24

What would you do if you were a young British boy with a million dollars?

IN ARTS&amp;CULTURE, 21



## New major doctors up college of engineering

There are 125 students with a biomedical concentration; 23 students hope to receive a master's degree in the field

Cory Harris  
MUSTANG DAILY

Cal Poly's college of engineering received a boost with the addition of biomedical engineering to their list of majors.

Current sophomores and freshmen will be able to graduate with the degree.

According to a FAQ produced by the college of engineering, "biomedical engineering is a branch of engineering in which knowledge and skills are developed and applied to define and solve problems in biology and medicine."

So how does this relate to Cal Poly students? Ben Cull, an engineering senior, explains biomedical engineering's significance to a community.

"In biomedical engineering, we

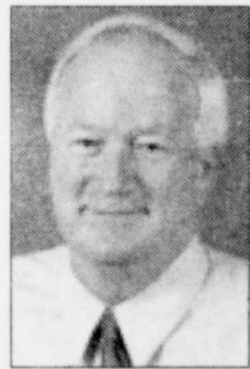
do anything from designing artificial implants like hips and knees to pace makers and surgical tools," Cull said. "It's pretty much anything a doctor would use in the surgery room."

Some students believe that the major will be impacted within its first years.

"The demand is high for biomedical engineering," engineering senior Jessie Wood said.

Both Wood and Cull will graduate from Cal Poly with a concentration in biomedical engineering. It would not be a surprise to Cull to see many engineering students jump to the biomedical major.

"It is attractive to a lot of engineering students," he said. "You get to help people out in a direct way see Biomedical, page 2



Dan Walsh



SHEILA SOBCHIK MUSTANG DAILY

Cal Poly construction management students and graduates work alongside rotary clubs to build a gazebo at Mitchell Park between Santa Rosa and Osos Street.

## Students build a better SLO

Construction management students and graduates help build a gazebo at Mitchell Park on Santa Rosa and Osos street

Jonathan Drake  
MUSTANG DAILY

Construction management students are working on the gazebo visible from Santa Rosa and Osos streets near downtown at Mitchell Park.

Three undergraduate and two

graduate students are working to complete the gazebo that will also function as a bandstand as part of their senior project.

The students have been working alongside the Rotary Club of San Luis Obispo and the Tuesday Daybreak Rotary Club. The clubs initiated the idea for the bandstand in celebration of the Rotary International's 100th anniversary.

The octagonal structure was

designed by architect Tom Brajkovich. It stands 22 feet tall and measures at 28 feet in diameter. The crown of the structure will feature a vaulted ceiling.

Erik Hoffman, one of the construction management graduate students working on the project, is the son of Jim Hoffman, president of the Rotary Club of San Luis Obispo.

The other students working on the see Gazebo, page 2

## High cost of diesel hitting farm industry hard

A barrel of crude oil costs as much as \$55, up from \$35 this time last year

Juliana Barbassa  
ASSOCIATED PRESS

FRESNO — The farmers who grow many of the fresh fruit and vegetables for the nation's dinner tables say the rising cost of oil is making this one of their toughest planting seasons yet, and might shove some of them out of business.

Drivers nationwide have had to pay more as political volatility and increased demand worldwide push up gas prices, said Ron Planting, an economist with the American Petroleum Institute. A barrel of crude oil now sells for as much as \$55, up from \$35 this time last year.

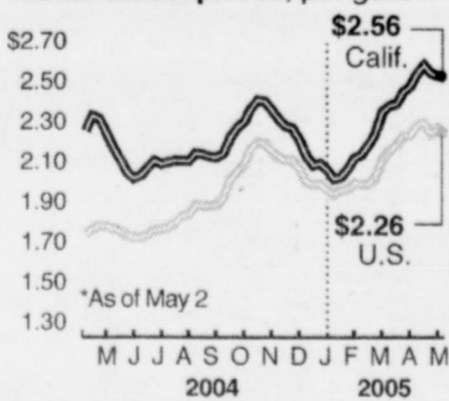
Farmers nationwide have seen the price of fuel more than double, from 96 cents a gallon in April 2002 to \$1.97 in April 2005. In California alone, they use more than 1.5 million gallons of diesel a day at the peak of harvest. Truckers in the state, which has the highest fuel prices in the country, pay about \$2.56 a gallon at the pump, 28 cents more than this time last year, for diesel, which sells for about \$2.26 a gallon nationally.

Nationally, U.S. farmers will spend

### High diesel prices burden farmers

California farmers and truckers pay 30 cents more per gallon for diesel than the national average.

Retail diesel prices, per gallon\*



ASSOCIATED PRESS

about 10 percent more this year, about \$3 billion, on costs including fuel and fertilizer, even as the price consumers pay for fruits and vegetables remains relatively stable, said Terry Francl, senior economist with the American Farm Bureau Federation, a Washington, D.C.-based group representing farm interests.

"Farmers are price takers, not price makers," he said. "This means they've just had their income reduced by \$3 billion."

## Floral team wins national competition

Cal Poly flower judging team member Audrey Chaney wins the top judge in the country

Kristen Oato  
MUSTANG DAILY

The Cal Poly flower judging team has done it again. Crop science professor Virginia Walter and her team seized Cal Poly's fourth straight win in the National Intercollegiate Floral Judging Contest. This marks the 10th win for Cal Poly in the past 16 years of competition.

The contest is divided into 28 categories. There are 14 fresh flower classes and 14 potted flowering or foliage classes. First through fourth place judges are determined by professional coaches nationwide.

"In order to become a floral judge, you must know the standards of quality. Students enroll in my flora culture grades and standards class, and from there, they compete for a position on the team," Walter said.



COURTESY PHOTO

Cal Poly flower judging team members from left to right Micheala Vanoni, Audrey Chaney, Elizabeth Bledsoe, and Layci Gragnani.

Environmental horticulture science major and team member Audrey Chaney stood out by winning the top judge in the country. She was award-

ed an average score of 95 percent. With an almost perfect 100 percent average, Chaney also won the best cut

see Flowers, page 2



## Biomedical

*continued from page 1*

with the quality of their life. You really will get a lot of satisfaction at what you accomplish."

Wood and a few of her fellow classmates have made the helpful push for biomedical engineering to go from a concentration to an actual major.

"It's a nice way to be visible on campus. We have become the intermediate between the students and the faculty," Wood said. "We even had a booth at open house. It was called 'place the implant on the patient.' It was a fun little game where kids had to fish out an implant and place it on a patient."

The Biomedical Engineering Society played a crucial part in getting the major accepted. Along with the help from engineering professor Dr. Dan Walsh, the club spoke out to gain attention.

"He (Dr. Walsh) calls us the ambassadors of biomedical engineering," Cull said.

There are currently 125 students who have a concentration in biomedical engineering and 23 students hope to receive their master's degree in the field.

The major focuses on other engineering concepts as it deals with biomechanics, bioremediation, bioelectric signals, communications, and microbiological interaction with materials.

## Gazebo

*continued from page 1*

project include Devin O'Neill, Eben Schriber, Nick Ciuffo and Eric Scheidlinger.

The total cost of the project is about \$35,000 and is funded primarily through donations.

"We've had some very generous donors and we've really enjoyed working with the students," Jim Hoffman said. "They are smart, motivated and eager to have an actual project to work on."

Construction management

department chair Allan Hauck is pleased with the students' project.

"Cal Poly student projects have contributed to the community in many ways, with this gazebo project the most recent example," he said. "... This project benefits the community and provides our students with real-world experience as they prepare to enter the construction profession."

Completion of the project is pending, but an inauguration ceremony open to the public is scheduled for June 5. A live band will perform onstage.

## Flowers

*continued from page 1*

flower judge. "Audrey has remarkable talent in floral judging. Her strengths are judging cut flowers, but she worked hard to become a great potted flower judge," said Walter.

Agriculture science major and team member Michela Vonani also won the third best judge in the country. Vonani earned a 99-percent average.

The Cal Poly team was also awarded top honors for their floral design. The competition was part of the three event.

"This was an amazing accomplishment. It's almost impossible for a team to rake the entire contest," Walter said. "To win the floral design portion was remarkable."

# Stenner Glen

"Student living at its finest"

[www.stennerglen.com](http://www.stennerglen.com)

## Student Spring Special Tune Up

Full Wash

Adjust Brakes

Relube Drive Train / Cables

Adjust Hubs, Bottom Brackets, Headset

Adjust derailleurs

True Both Wheels

**Full Tune Up \$ 34.99**

\*Student tune up special

Compare from other shops in town at \$65!

**FOOTHILL** Cyclery

University Square Shopping Center

San Luis Obispo, CA 93405

Tel: 805.541.4101

[www.foothillcyclery.com](http://www.foothillcyclery.com)

**24 HOUR** turn around

DON'T MISS IT...

JOURNALISM AWARDS BANQUET

MAY 13, 2005 FROM 6 TO 9 P.M.

AT THE VIEW IN MORRO BAY

TICKETS \$10 FOR STUDENTS AVAILABLE IN THE JOURNALISM DEPARTMENT OFFICE



The Superior Court and the Bar Association invite you to...

## Community Law Night & Superior Court Open House

SLO Courthouse, Monterey Street  
Thursday, May 12 • 6:00pm - 8:30pm

### Activities include:

Meet the Judge • Courthouse Tour • Resource Fair • "Law & Order 101" • "How To" Legal Advice Clinics led by attorneys, topics include: Small Claims, Traffic Court, Probate/Estate Planning, Landlord/Tenant, Debt Collections, Bad Checks, Child Support Orders and Identity Theft/Consumer Fraud.

**781-5421**  
for more information

No Cost!

FIRST BANK

ScanLife PRINT COPY

## When You're Old Enough to Know Better



## Pint Night

Wednesdays 8 - 11 PM

KEEP THE GLASS!

Refills as low as \$1

Voted Cal Poly's Favorite Pizza! - Mustang Daily Readers' Poll

Check our menu & more at: [www.woodstocksslo.com](http://www.woodstocksslo.com) • 1000 Higuera St. • 541-4420

Dine-In Take-Out Groups Catering

## We Deliver!

Lunch Dinner (Late)

# WOODSTOCK'S PIZZA



## STATE NEWS

**SAN DIEGO** — Two city councilmen, including the man in line to become interim mayor, went on trial Tuesday on federal charges for taking money from a Las Vegas adult club owner in exchange for trying to ease restrictions on touching strippers.

Councilmen Michael Zucchet and Ralph Inzunza pleaded not guilty to charges they participated

in the alleged scheme to repeal San Diego's "no-touch" law in exchange for tens of thousands of dollars from club owner Michael Galardi.

"This is a case about the corruption of the political process through bribery, undue influence and deceit," Assistant U.S. Attorney Paul Cook said in his opening statement Tuesday.

**PINE MEADOW** — Six bodies were found Tuesday in a sprawl-

ing ranch home in rural Riverside County, authorities said. Deputies responded to a 911 call around 4:30 a.m. discovered the bodies in the home on Devil Ladder Road, Riverside County Fire Department spokesman Patrick Chandler said.

**SAN LEANDRO** — Alameda County supervisors are considering a proposal to open a medical marijuana clinic at a county hospital as an alternative to private pot clubs that have generated complaints

from neighbors.

If a majority of the Board of Supervisors approve, Alameda County could become the nation's first public entity to run a medical marijuana dispensary.

The idea of opening a clinic at San Leandro's Fairmont Hospital, which now has rehabilitation and HIV services, was proposed by Supervisor Nate Miley at a committee hearing Monday and will come before the full board on May 24.

—Associated Press

## IN OTHER NEWS

**MUNCIE, Ind.** — A Ball State University student always teased her mother for being unable to cook well, but she never imagined it would land the two a spot on NBC's "Today" show.

Courtney Brown and her mother, Suzi Brown of Columbus, appeared Wednesday on the morning news program as one of four families featured in a series titled "My Mom's Not the Greatest Cook."

"This all has been a little embarrassing, but if there is anyone who deserves it, it's me," said Suzi Brown, 52. "Everybody who knows me knows that I've always considered myself a poor cook." For the segment, a Today show crew came to the Browns' home in Columbus and requested that the mom bake something. But she had problems with her stove, which she had cleaned the night before.

"I washed the knobs, and when I shoved them back on, I put them on the wrong places!" she said.

As Courtney Brown was helping her mother with some sloppy joes, sandwich bread her mom had placed in a toaster began to burn.

"Smoke was coming out of the toaster," Suzi Brown said.

At this point, the daughter noticed something else about the sloppy joes.

"The can expired in 2003," she said. "I was like, 'This is disgusting!'"

—Associated Press

## NATIONAL NEWS

**ATLANTA** — Runaway bride Jennifer Wilbanks checked herself into an inpatient medical treatment program to deal with "physical and mental issues" that drove her to skip town just days before her wedding, a spokesman for her family's church said Tuesday.

The news about the treatment came as more details about Wilbanks' previous brushes with

the law emerged. She was charged with shoplifting on three occasions in the 1990s, including one case in which she allegedly swiped \$1,740 in merchandise from a mall, according to court records.

That felony charge was dropped after the then 24-year-old Wilbanks completed community service and paid restitution, according to court records.

**ZION, Ill.** — Police on Tuesday

questioned the father of one of two young girls found stabbed to death off a bicycle path and confiscated clothes and computers from the family's home, the girl's grandfather said. Arthur Hollabaugh, 51, said investigators were interviewing his son-in-law Jerry Hobbs, father of 8-year-old Laura Hobbs, and talking to the girl's siblings.

**CHICAGO** — Children who are poor often don't get the med-

ical follow-up they need for lead exposure, and those at highest risk for lead poisoning are the least likely to get additional testing, a study in Michigan found.

The study involved 3,682 children in the Medicaid program whose blood tests showing levels of lead that could harm mental function. Only about half the children — 54 percent — had follow-up testing within six months, the researchers said.

—Associated Press

## INTERNATIONAL NEWS

**BAGHDAD, Iraq** — U.S. forces hunting down followers of Iraq's most wanted terrorist pushed into a lawless region near the Syrian border Tuesday after meeting unexpected resistance from insurgents hidden in remote desert outposts along the southern banks of the Euphrates River. Marines fought house-to-house Monday

against dozens of well-armed insurgents firing at them from balconies, rooftops and sandbagged bunkers in the border town of Obeidi and surrounding villages, the Los Angeles Times reported.

**TBILISI, Georgia** — Cheered by tens of thousands in a former Soviet republic, President Bush urged the spread of democracy Tuesday across the former communist world and beyond, declaring

that oppressed people "are demanding their freedom and they shall have it."

Bush said that Georgia, where the peaceful Rose Revolution in 2003 sparked a domino effect of governmental change in the region, was inspiring democratic reformers around the world.

"Freedom will be the future of every nation and every people on Earth," Bush said in speech from the Freedom Square that symbol-

izes the city's democratic pursuits.

**SEOUL, South Korea** — North Korea accused the United States on Tuesday of "making a fuss" by notifying allies of the communist nation's possible preparations for a nuclear test, and maintained it would stay away from international disarmament talks. However, the North didn't confirm or deny it was planning such a test.

—Associated Press



# UNDER FOUR? OR IN THE ER?

69% of students never injure themselves due to drinking. The average CP student drinks less than 4 in a sitting.



# Philanthropist complains about Montanans' attitudes

Rifts between non-resident landowners and locals prompted a "no" response to a Montana university's grant request

Susan Gallagher  
ASSOCIATED PRESS

HELENA, Mont. — The rejection letter to the University of Montana fundraising drive was just five sentences, straight and to the point: Until Montanans start showing that out-of-state landowners are "more appreciated," the writer said, don't expect a donation.

The animosity of longtime Montanans toward wealthy non-residents buying up land — and often fencing it off — is not new. The letter last month from the Atlanta-based James M. Cox Jr. Foundation was a rare example of the financial consequences.

The University of Montana had approached the Cox foundation for money to help construct a \$3 million auditorium for the university's journalism school on the campus in

Missoula.

The foundation replied: "As you may know, many Montana residents are making it known that they are not happy with nonresident landowners in their state. In addition, stream and river access issues are also being raised. Until these issues are resolved and our presence in the state is more appreciated, we have decided not to make any further contributions in Montana."

The views expressed were those of philanthropist James C. Kennedy, chairman of Cox Enterprises Inc., the TV, radio and newspaper empire founded by his grandfather. Kennedy said he has owned land in Montana for more than 10 years. His holdings include about 3,200 acres along the Ruby River, a prized trout stream at the center of a dispute over public access for fishing.

"There are a lot of non-resident landowners who do a lot of good things for Montana, and who are upset by this constant harping about

nonresident landowners," Kennedy said in a telephone interview from his Atlanta office.

Kennedy said the main reason the foundation declined to donate was that Cox has no businesses in

*"This is both baffling and humorous and it sounds like the melodrama of the New West: 'Wealthy outside landowner and locals clash over stream access.'"*

— JERRY BROWN

University of Montana's dean of journalism

Montana — though that point was not made in the letter. When the letter was being prepared, Kennedy said, he told an assistant to "lob in something about this other issue."

"Sometimes your emotions get carried away," said Kennedy, whose personal giving in Montana includes scholarships for high school students in Twin Bridges and White Sulphur Springs, near his property.

Jerry Brown, the university's dean of journalism, responded to the letter by saying, "This is both baffling and humorous and it sounds like the melodrama of the New West: 'Wealthy outside landowner and locals clash over stream access.'"

Other wealthy people have bought land in Montana only to find conflict is part of the package.

After Ted Turner began buying ranch property more than 25 years ago, some Montana cattlemen complained when he brought in bison, which ranchers feared could transmit disease to cattle. He refused to allow hunting on a ranch, and neighbors complained that elk wandering from his place damaged their land.

Last year, former NBC anchorman Tom Brokaw, who gave the University of Montana \$40,000 for its journalism building, obtained a court order revoking permits that would have allowed an outfitter to

take more hunters onto land next to Brokaw's Montana ranch. Brokaw said he did not oppose hunting in general but was worried that he or his family would get hit by a stray bullet.

In Montana's Bitterroot Valley, rock singer Huey Lewis has been involved in a dispute for several years over water running through his property. Lewis maintains that it is nothing more than a ditch and is not covered by a Montana law that says all navigable streams are public. Some 50 anglers ignored Lewis' "no trespassing" signs one day last summer to fish the waters. As for Kennedy, critics say fences allowed for control of livestock on his land are keeping people from reaching the Ruby River.

Jerry Johnson, a political scientist at Montana State University, has studied what he calls "the out-of-stater-new-comer thing" for more than a decade.

"It's really easy to blame the out-of-staters for putting up 'no trespassing' signs and wanting privacy, which is why they buy the big holdings here," Johnson said.

## Need a summer class?

Are the Cal Poly classes you need full or not offered this summer? Take an online course from Allan Hancock College and pay just \$26 a unit!

Complete general ed., support, and major classes at Allan Hancock College. Hundreds of Hancock courses fulfill your Cal Poly lower division graduation requirements.

### Examples of online classes available this summer

CAL POLY COURSE	AHC EQUIVALENT
Ant 201	= Anthro 102
Ant 250	= Anthro 101
Art 111	= Art 101
Econ 201	= Econ 102
Econ 222	= Econ 101
ES 114	= ECS 116 or SOC 120
KINE 250	= H ED 100
STAT 211 & 212, 217, 218, 221, 251	= MATH 123

For a complete list of Allan Hancock College summer 2005 online and onsite courses, go to [www.hancockcollege.edu](http://www.hancockcollege.edu) and click on "University Programs."

Register online  
May 2-June 11, 2005  
[www.hancockcollege.edu](http://www.hancockcollege.edu)

The AHC summer session runs  
June 20-August 11, 2005.

Visit the AHC info table at the U.U.  
**Thursday, May 12,**  
from 11 a.m. to 12:30 p.m.



ALLAN HANCOCK COLLEGE

A California public community college  
800 South College Drive, Santa Maria  
toll free 1-866-DIAL AHC (342-5242) ext. 3363

## Want to be a teacher with a multiple subject credential?

HAVE YOU WONDERED IF YOU CAN?

Find a credentialing program that doesn't cost as much as a house down payment?

Yes, you can do that...

Learn to teach hands-on while working in real classrooms?

Yes, you can do that....

Enroll in a fully accredited, quality multiple subject program wherever you are in the state?

Yes, you can do that.....

Learn about the CSU Fresno's web-supported, multiple subject credential program by visiting our website at [www.calstateteach.net](http://www.calstateteach.net) or contact Dr. Walter J. Ullrich at 278-0234 or [wullrich@csufesno.edu](mailto:wullrich@csufesno.edu)



## TRADER JOE'S



The Fun Place to Shop!

- ✓ Great Prices
- ✓ Fun Crew
- ✓ Extensive Organic Selection
- ✓ Come Shop with Us

#1 Supermarket  
#1 Place to Buy Wine  
& one of the Best Health Food Stores



3977 South Higuera Street, SLO • 783-2780



# Career Fair Issue

SPECIAL ADVERTISING SECTION

• a directory of companies for the spring job fair •

## Abercrombie & Fitch

Abercrombie & Fitch is the most successful specialty retailer in operation today. Our casual, classic, all-American lifestyle brand of clothing is synonymous with quality. Based in Columbus, Ohio, the Abercrombie & Fitch brands have never been more powerful or more profitable.

## AEDIS Inc.

AEDIS Architecture & Planning is a full service architectural firm with strong expertise in educational and educational-related facilities. Located in San Jose, AEDIS maintains a staff of more than 45 professionals. AEDIS is well recognized for our strong management framework, which allows innovation to flourish, resulting in projects that not only meet but surpass every client's expectations.

## American Express Financial

Across America, in communities large and small, nearly 10,000 American Express financial advisers provide over 2 million clients with the financial products and services they need to help make the most of their lives. They offer a wide range of products and services from financial planning to brokerage services and retirement accounts to life insurance and annuities. They're a

hugely diverse group — men and women, young and old, from all walks of life, cultural backgrounds and lifestyles.

## Amgen, Inc.

Amgen, the world's leading biotechnology company, discovers, develops, manufactures and delivers important human therapeutics based on advances in cellular and molecular biology including EPOGEN (Epoetin alfa), Aranesp (darbepoetin alfa), NEUPOGEN (Filgrastim), Neulasta (pegfilgrastim), Enbrel (etanercept), and Sensipar (cinacalcet HCl). Amgen's dedication to scientific excellence is driven by our mis-

sion to serve patients.

## Amit Apel Design, Inc.

We are a full service design firm, providing our clients with both architectural design and structural engineering. We are small but growing to meet our clients needs. Our focus is upon high-end residential, commercial and retail throughout the greater Los Angeles area. Our designs offer a unique opportunity as an engineer to encounter uncommon challenges.

## Anritsu Company

Anritsu Company is the North American subsidiary of Anritsu Corporation based in Atsugi, Japan. Anritsu has been recognized as a

leading provider of communications solutions for more than 100 years. Anritsu has become a global leader in the telecommunications, optical and wireless industries by providing diverse product offerings ranging from test and measurement solutions to high-speed devices and components for use in R&D, production, and maintenance.

## Applied Technologies Associates

Applied Technologies Associates, a division of Scientific Drilling International, is a world leader in the research, development and manufacturing of leading edge technologies for the petroleum industry. Our dynamic team of

engineers and technicians designs and produces the most advanced navigational, surveying, and computer electronics for drilling operations worldwide. Located in beautiful Paso Robles wine country, our expansive, modern facilities provide a work environment that promotes individual achievement, creativity and engineering excellence.

## ARCADIS G&M

ARCADIS is an international firm specializing in environmental remediation of complex soil and groundwater sites. We have 2200 employees in the US and 8000 worldwide. We are looking for motivated candidates to support our Northern and Southern California operations.

## Asymtek

We design and manufacture automated fluid dispensing systems for high-speed, accurate applications, including semiconductor package assembly, printed circuit board assembly, opto-electronics assembly, and precision industrial manufacturing.

## Bassenian/Lagoni Architects

Bassenian/Lagoni Architects is an international architectural and land planning firm specializing in the

see Directory, page 6

**Thursday**

• all majors •

**Friday**

• College of Architecture  
and Environmental Design •

**Chumash Auditorium**

Open forum: 9:30 a.m. - 1 p.m.

Interviews: 2 - 4:30 p.m.

**Are you serious about working for a major competitor in heavy civil construction?**

**Do you like teamwork? Do you want to build some of the most challenging projects in California?**

**Do you want to grow with a great company? Do you like to get your hands and feet dirty?**

**If you answered YES to these questions,  
we want to talk to you!**

**Shimmick Construction** is currently recruiting for the position of Construction Engineer.

This position demands an energetic and dynamic person. It is very "hands on" as well as technically challenging. The duties involve managing the field personnel, procuring materials and equipment and other company assets. Other duties include scheduling, cost estimating, and project management/procurement of varying responsibility levels. Project management will include submittals, progress payment requests, management of subcontractors, and many other types of contractual documents. Engineers typically work in a support role directly for project superintendents/engineers and work closely with the crews.

**Minimum Requirements:** Pursuing a B.S. in Civil Engineering; Engineering Technology, or Construction Management preferably with an interest in construction

**Internships are also available.**

Please E-mail or fax your resume to Chemene Hooker at info@shimmick.com fax 510/293-1110. Please visit www.shimmick.com for our current job openings.

Shimmick Construction Co., Inc. is a General Engineering/Heavy Civil Contractor headquartered in Northern and Southern California. The Company performs heavy engineering projects for various government agencies in the greater Bay Area and Southern California. Shimmick Construction is an Equal Employment Opportunity Employer



**SHIMMICK**  
CONSTRUCTION

**Shimmick Construction will be on recruiting on campus on the following dates:**

**Thursday, May 12th**

**What:** Career Fair and Interviews

**Where:** Chumash Auditorium

**Time:** 9:30am - 1:00pm Career Fair  
2:00pm - 4:30pm Interviews

Make sure you stop by our table

**Friday, May 13th**

**What:** Career Fair and Interviews

**Where:** Chumash Auditorium

**Time:** 9:30am - 1:00pm Career Fair  
2:00pm - 4:30pm Interviews

Make sure you stop by our table

For more information about Shimmick Construction Co. Inc. Visit our website at [www.shimmick.com](http://www.shimmick.com)



Directory

continued from page 5

design of residential communities. Our firm's award-winning expertise in single family residential, multi-family residential and mixed use design is reflected in projects across a broad range of densities where we create innovative solutions with lifestyle-oriented, consumer-driven design. We use an integrated approach to community planning and architectural design to provide a comprehensive service. Bassenian/Lagoni operates from Newport Beach, at the heart of much of the country's innovative design, with a staff of over 100 people. We couple creative design leadership with uncompromising service and are pleased to deliver this award-winning combination throughout California and the West, across the United States and into international markets such as Mexico, Canada, Japan, Indonesia, United Arab Emirates and China.

**Beauchamp Engineering, Inc.**

Beauchamp Engineering, Inc. is a Structural Engineering consulting firm based in Phoenix, Ariz. Current staff includes five licensed professional engineers, three structural inspectors, two structural draftsmen and two support staff. Beauchamp Engineering, Inc. is the Engineer of Record for the Dysart School District, one of the fastest growing school districts in the state.

**Berchtold Equipment Company**

Berchtold Equipment Company is a full-service Agriculture and Construction Equipment Dealership. We sell, lease, and rent several brands of equipment includ-

ing New Holland, Kubota, and Bobcat. We have professional parts and service departments to support the products we sell. We have been family-owned since 1910, and we have three locations in California (Delano, Bakersfield and Santa Maria).

**Bill Gould Design Art & Architecture**

Bill Gould Design Art & Architecture (BGD) is a small, progressive, design-oriented architecture firm in San Jose focusing on public and institutional work and with a unique specialty of public art design. BGD's work has been the recipient of many awards and has been widely published in the South Bay, Bay Area, and beyond. BGD focuses on conceiving unusual, creative solutions for highly visible public projects with an emphasis on community involvement.

**Bobrick Washroom Equipment, Inc.**

Bobrick, a leading manufacturer of high quality commercial washroom equipment, has been serving the washroom accessory and toilet partition needs of North American and International building owners, designers, architects and distributors since 1906. The Bobrick system for total washroom design combines innovative engineering, quality manufacturing and outstanding service, to offer a wide variety of accessory and partition products to meet the requirements of all building types.

**Bovis Lend Lease Inc.**

Bovis Lend Lease is one of the world's leading companies in the project management and construction services industry. Areas of operation Bovis Lend Lease oper-

ates in 38 countries spanning six continents. The company operates through three geographic regions; the Americas, Asia Pacific and Europe.

**Brereton Architects**

For 25 years, Brereton Architects has continued to be a leading architecture, planning and design firm based in San Francisco. We consistently create well-designed working environments for commercial offices, medical and sports facilities. We effectively develop solutions with consideration for the individuality and unique environment of each business, their schedules and budget requirements.

**Bridge Bank**

Bridge Bank combines the resources and services typically associated with larger banks with an unparalleled commitment to personal service. Bridge Bank offers banking solutions created specifically to help businesses grow and prosper.

**California Air Resources Board**

California Air Resources Board (ARB) is a state board within the California Environmental Protection Agency (government). Since its formation in 1967, the ARB has worked with the public, the business sector, and local governments to protect the public's health, the economy, and the state's ecological resources through the most cost-effective reduction of air pollution.

**California Department of Toxic Substances Control**

The California Department of Toxic Substances Control (DTSC) protects Californians from exposures to hazardous wastes. Approximately 1,000 scientists,

engineers and specialized support staff work in nine offices statewide.

**California Department of Water Resources**

California Department of Water Resources (CDWR) main purpose is to provide water supply — that is, to divert and store water during the wet period and distribute it to the areas of the need from Northern California to Southern California.

**California State Board of Equalization**

One of California's largest taxing agencies. In charge of administering the sales/use tax, property tax, special tax, and tax appellate programs for the State of California. The State Board of Equalization offers a challenging career to anyone wishing to actively participate in an internationally recognized tax agency. As one of California's largest tax agencies, we have set the standard for the effective and sophisticated administration of tax programs.

**Callander Associates**

Callander Associates is a privately owned landscape architecture and planning firm with offices located in San Mateo and Rancho Cordova.

**Calpo Hom & Dong Architects, Inc.**

Calpo Hom & Dong Architects, Inc. (CH&D) is a Sacramento-based architectural firm which offers a full range of architectural services, including master planning, programming, feasibility studies, design, interior design, space planning, facilities management, construction administration, historic preservation, and consulting services.

**The Capital Group Companies**

The Capital Group Companies is an investment management firm dedicated to helping its mutual fund shareholders and institutional clients realize their financial goals. For more than 70 years, we have provided consistent long-term results and excellent services for our investors. We manage over \$900 billion in assets and have more than 13 million shareholders in our American Funds, making us the third-largest mutual fund family in the United States.

**Cargill Animal Nutrition**

Cargill Animal Nutrition provides customized animal productivity solutions to commercial producers across the Americas, Europe, and Asia. Rather than focusing on standardized nutrition products, we create customized ingredient blends and management programs to fit each situation. Our research-proven management and nutrition technologies suit the specific needs of our diverse array of customers. And our animal nutrition and management experts offer the scope and creativity to serve the unique needs of each customer.

**Carlile Coatsworth Architects, Inc.**

Carlile Coatsworth Architects, Inc. was formed in 1989, and has continued to grow and prosper, while building a solid, reputable architectural firm. Carlile Coatsworth Architects has a diverse background with office, commercial, retail, industrial, warehouse and residential project experience. We provide full architectural services for speculative buildings, build-to-suits, remodels and tenant improvements.

see Directory, page 7



LANDSCAPE ARCHITECTS, INC.



Designing great landscapes.  
Building great careers.

A Leader in Landscape Architecture on the Central Coast for 16 years

Come Join Our Team

See us on Career Day, Friday, May 13th

303 Potrero Street, Suite 40-C | Santa Cruz, CA 95060-2778 | Phone: 831.459.0455 | Fax: 831.459.0484 | www.ssala.com



## Directory

continued from page 6

### Carbollo Engineers

ENR Top 100 engineering firm specializing in the planning, design, and construction management of water and wastewater facilities.

### CAS Architects Inc.

Founded in 1978, CAS Architects Inc. is one of the top architectural firms in Silicon Valley. We offer opportunities to be involved in a wide range of interior and new building projects for high tech, bio tech, internet, restaurant and retail companies.

### Central Valley Regional Water Quality Control Board

Our mission is to preserve and enhance the quality of California's water resources for the benefit of present and future generations. The primary duty of this Regional Board is to protect the quality of the waters within the Central Valley Region for all beneficial uses. This duty is performed by formulating and adopting water quality control plans for specific ground and surface water basins and by prescribing and enforcing requirements on waste discharges.

### Citibank

Citibank, citigroup's branch-based banking business, has 29 million customer accounts in 47 countries and territories and is well on its way to offering one-stop availability of products and services for every stage of one's financial life.

### Cole Chrysler Dodge

We have been in business for over 56 years. Seven of our sales people are all Cal Poly Graduates. We offer a great pay plan and fan-

tastic schedule. If you are interested in making a great living and staying in San Luis Obispo then this is the opportunity of a lifetime.

### Colombo Construction

For over 55 years Colombo Construction has been serving the Central Valley in Commercial Construction. Colombo offers construction services in Construction Management, General Construction and Design-Build Services. In addition, Colombo has its own rough and finish carpentry crews as well as concrete and Steel erection crews.

### Conceptual Design and Planning

We are a Landscape Architecture firm specializing in commercial, retail and urban design, park and recreation programming and planning, environmental and public participation services. Most of our projects are located in California; recent expansion includes other states. We provide innovative and creative design solutions in a team effort based on open communication and exchange of ideas.

### CSG Consultants, Inc

CSG Consultants, Inc is a privately owned company providing professional building and safety consulting services to Cities and Counties to verify conformance with California Building Codes. We are currently seeking plans examiners for our Northern and Southern California offices to review architectural and structural plans for code compliance. We offer competitive pay, benefits and flexible schedules.

### Dahlin Group

Dahlin Group is dedicated to the enhancement of community and the built environment through

creative, quality and appropriate design. This includes the following professional services: Urban Design, Community Residential, Custom Homes, Commercial Recreational, and Design Visualization. We have four offices with over 100 employees.

### Deems Lewis McKinley

Deems Lewis McKinley is an award winning architectural and structural engineering firm that specializes in educational and civic facilities. DLM has been honored with 5 statewide design award in the past two years.

### Del Monte Foods

Del Monte Foods Hanford facility is the companies only fresh-pack tomato processing facility. We process in excess of 400,000 tons of fresh tomatoes each processing season. We are a part of the larger organization that operates 16 production facilities and 15 distribution centers in 14 states, and nine operations in American Samoa, Canada, Ecuador and Venezuela.

### Design Partnership

The Design Partnership is a unique architecture and planning firm that has been providing high quality designs for over 25 years. Since it was founded in 1979, the firm has built its foundation on meeting the individual needs of its clients. Our mission is to become a partner with our clients and their communities to create exceptional design solutions.

### Drug Enforcement Administration

The drug Enforcement Administration (DEA) is a federal law enforcement agency whose primary responsibility is to conduct investigation on major violators of

the federal drug laws. DEA special agents conduct criminal investigations and prepare for the prosecution of major violators of the drug laws of the United States.

### E & J Gallo Winery

The E & J Gallo Winery currently employs more than 4,600 people and markets its wines throughout the U.S. and over 90 foreign countries, making it one of the largest winemaking operations in the world.

### Equal Opportunity Commission of San Luis Obispo

Designated by the Board of Supervisors in 1965 as the county's private nonprofit Community Action Agency, EOC provides comprehensive community-based programs, which strive to alleviate poverty and promote self-sufficiency among economically and socially disadvantaged residents. Annually, EOC serves more than 40,000 persons across San Luis Obispo County and ten other central and southern California counties including San Diego, Orange, Ventura, Santa Barbara, Fresno, Kern, Monterey, San Benito, Tulare, and San Joaquin.

### EDO Corporation

EDO Corporation is a publicly traded company listed on the New York Stock Exchange and headquartered in New York City with 14 Business Units in the United States and the United Kingdom. EDO employs over 2500 personnel with approximately 300 employees at the Communications and Countermeasures Systems (CCS) Business Unit in Thousand Oaks.

### Edwards Air Force Base

The Air Force Flight Test Center,

at Edwards Air Force Base is the Air Force Material Command Center of Excellence for research, development, test and evaluation of aerospace systems for the United States and our allies. It also operates the U.S. Air Force Test Pilot School and supports non-military government agencies.

### Enterprise Rent-A-Car

Enterprise is the largest car rental company in North America and arguably the world. We are a \$7.4 billion company with more than 735,000 vehicles in our rental and leasing fleet, more than 57,000 employees and over 6,000 locations in the U.S., Canada, Germany, the United Kingdom and Ireland. Since our origin in 1957, our employees have always been empowered to make decisions that greatly effect their work and their career. It is this philosophy along with an unyielding dedication to the customer that has made Enterprise a true success story and a truly unique place to work. Everyday isn't so much like a workday as it is an MBA crash course. At Enterprise, you'll gain valuable and highly marketable skills in every aspect of business management from sales and marketing and developing a staff to customer service and accounting. Yet, we're not all business all the time. Enterprise is also a tight knit culture, where great people really enjoy each other's company both in and outside of work.

### EwingCole

EwingCole is a multidisciplinary design firm offering architecture,

see Directory, page 8

## Nunhems' Vision & Mission

### Nunhems is:

A globally integrated group of teams dedicated to the development and marketing of innovative vegetable genetics and related science and services for the production of healthy food.

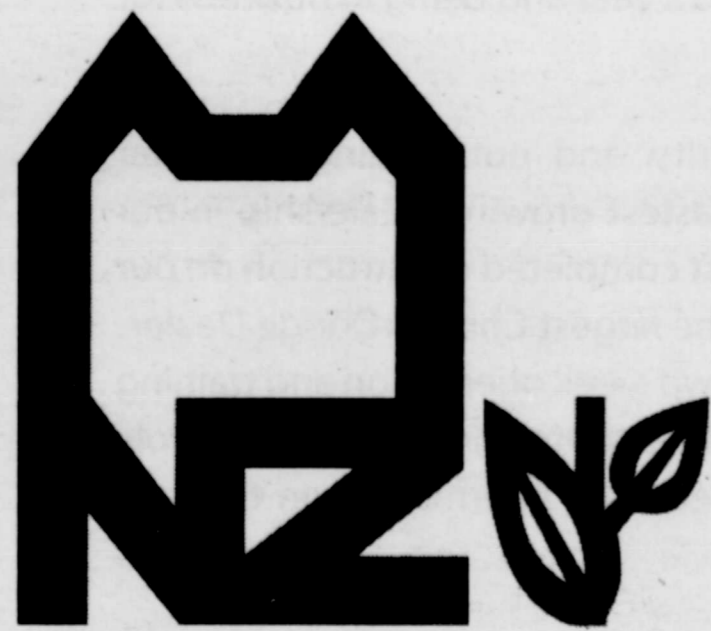
### Nunhems stands for:

- Well-being of its customers and employees
- Long-term value growth
- Ideas and innovations
- Functional and cultural diversity and an open mind for everybody's contribution
- Entrepreneurship with professionalism and integrity

Nunhems employs a highly trained workforce in research, plant breeding, seed production, seed processing, and marketing and sales. All members, whether in research, operations or sales, are dedicated to the creation and marketing of state of the art vegetable seed varieties with an added value to Nunhems' customers.

Nunhems' responsibility does not end with the supply of the seeds. For better results, Nunhems has organized their marketing and sales into crop teams to better focus on our customer's needs. Cell biotechnology, seed technology, molecular biotechnology and information technology departments support the plant breeding technology. Nunhems considers the health benefits of its products an essential part of plant breeding and marketing strategies. Nunhems strives for long-term value growth for all shareholders; customers, and employees. Ideas and innovations are founded on the creativity to apply and implement advancements of science and technology. As an international company, Nunhems respects cultural differences in the many countries they operate in and do business. Nunhems pursues excellence inside and outside the company, and emphasizes entrepreneurship in all aspects of our business.

Our result is founded on entrepreneurship



nunhems®

## The following positions are currently open to application:

**Food Scientist** - Support breeding and product development activities through vegetable quality analysis. Identify and implement novel vegetable quality traits. Interact in a globally coordinated group as part of the research and development Division. Interact with global marketing. PhD in food science or related analytical chemistry field or MS in food science with five years related industry experience.

**Assistant Breeder** - Together with the Breeder assist in providing direction to the breeding program in designing and executing the process of continuous variety creation and development in order to develop commercially successful varieties. BS in horticulture, plant breeding, genetics or closely related field with 1-2 years experience in plant breeding. Working knowledge of horticultural practices and procedures, genetics and plant breeding preferred.

**Sales Specialist** - Introduce new varieties and realize sales within an international environment in order to realize long-term profitability and partnership with customers.



**Directory**

*continued from page 7*

engineering, interior design, and planning services to domestic and international clients. With five offices across the country, including one in Irvine, EwingCole has grown from a small firm in the early 1960s to over 300 professionals. The firm's portfolio includes a diverse collection of projects in the research and development, health-care, corporate interiors, sports and entertainment, academic, cultural, government, and senior living practices.

**Fastenal Company**

Fastenal is the fastest growing industrial supplier in North America and we are looking for motivated individuals that are interested in starting a fast paced career. With over 1500 locations and over 1.2 billion dollars in sales in 2004 and a growth rate of over 20 percent since 1967.

**FCI Constructors, Inc.**

FCI Constructors, Inc., a Flatiron Company has been serving California since 1991; specializing in Transportation & Heavy Civil Construction Projects. Our experience encompasses major bridge, highway projects, toll roads, light rail transit, tunnels, and other transportation and infrastructure projects. AGC of California has been an integral part of our projects and business development.

**Fetzer Five Rivers Ranch**

Fetzer Five Rivers Ranch located in Paso Robles is a progressively designed 5,000 ton red wine facility and one of the largest growers of

organically grown grapes. Fetzer values its employees and is committed to quality wine production while maintaining a high level of environmental stewardship. We have two to three temporary harvest intern positions open for fall 2005.

**Field Paoli Architects**

Field Paoli is a diverse, design-oriented architectural practice with a national reputation in complex large-scale community, mixed-use and retail projects. Since our inception in the 1970s our design efforts focus on the integration of multiple uses within a community and our expertise includes the design of community centers and libraries.

**Gillespie Design Group**

Gillespie Design Group is a 35+ person Landscape Architect firm involved in all aspects of landscape architectural design for residential master planned communities, urban developments, hotels and resorts and commercial developments. We are located in La Jolla, a suburb of San Diego.

**Golba Architecture Inc.**

Full service architecture firm located in San Diego specializing in Coastal housing, both single and multi-family work as well as specific commercial use projects. Great opportunity for the right person to work in our relaxed and fun environment while being challenged with unlimited opportunities and experience.

**Gothic Landscape**

Gothic Landscape is committed to proudly create an unparalleled client experience that enhances our environment and demonstrates our passion for extraordinary service. We work primarily in the home

building industry dealing with the largest builders in the Southwest. We are into landscaping and maintenance services. We are looking for motivated individuals that we can train and promote in the landscaping industry.

**Harris & Associates**

Harris & Associates has been committed to serving public and institutional clients since 1974. Since our inception, our firm has seen dramatic growth within the size of our firm and the expansion of services we provide. Given the ever-changing needs of the communities around us, we are constantly faced with new challenges and opportunities to create a dynamic and exciting work environment.

**HBE Corporation**

The HBE Corporation is a fully integrated design-build organization headquartered in St. Louis, MO. We continue to be a major force in the highly fragmented engineering, architectural, and construction industries. HBE has been selected by Forbes magazine as one of the top privately held companies within the U.S. and currently ranks among Engineering News Records list of top design-build firms. Our unique single-source, design-build format allows employees to be exposed to every aspect of design, engineering, and construction within one organization.

**HDR Engineering Inc.**

Engineering Firm, Traditional A&E — Civil, Water, Wastewater, Transportation, Water Resources, Architecture.

**The Henry Wine Group**

The Henry Wine Group is a

wholesaler/broker/importer of fine wines from around the world. We are a company focused on wine education and sales training.

**HGA Architects and Engineers**

HGA is a full-service architecture and engineering firm with six offices nationwide. HGA teams listen and lead. The firm is about helping clients fulfill their needs and realize their aspirations. Delivering lasting, flexible and environmentally intelligent design is the legacy on which HGA was built and the one it intends to leave for future generations.

**Hitachi Global Storage Technologies**

Hitachi Global Storage Technologies is a global storage technology company that brings a customer — focused and full — service approach to solutions for the hard disk drive marketplace. Hitachi Global Storage Technologies is positioned to inspire and lead the evolution of storage component technologies in the spirit of its founders.

**HKS Architects Inc.**

HKS began in Dallas, Texas with Harwood K. Smith. The firm has been in operation since that time — growing and expanding, becoming one of the most recognized and successful architectural firms in the country — with significant commissions in the commercial, health care, hospitality, education, sports, aviation, justice, and religious practices. The firm is headquartered in Dallas with offices in Atlanta, Los Angeles, Mexico City, Orlando, Richmond, Salt Lake City, Tampa, Washington DC, and alliances in the United Kingdom.

**HLA Group, Landscape Architects & Planners, Inc.**

The HLA Group, Landscape Architects & Planners, Inc. is an innovative and established firm providing landscape architecture and planning services to vast array of client types. The firm's landscape architecture, urban design, and site planning services have been demonstrated on many projects varying in scope and size throughout California. Expertise within The HLA Group covers a wide variety of landscape and planning projects a demonstrated over its 25 year establishment period.

**HMR Architects Inc.**

HMR is a young enthusiastic Architecture Firm with a proven 55 year track record. We specialize in educational facilities, governmental projects, historical restorations and retail developments.

**HOK**

HOK is celebrating its 50th year in 2005. We have 22 offices around the world. Our office in Culver City has both Architecture and Interior Design. We work on a wide variety of large-scale projects — healthcare, science + technology, higher education/university, justice, corporate, aviation, general civic. We have a major focus in sustainable design and a keen interest in enriching people's lives through the built environment

**HRP LanDesign**

HRP LanDesign offers an excellent professional environment. With four design studios and a technical support studio, we offer employees the opportunity to work

see Directory, page 9

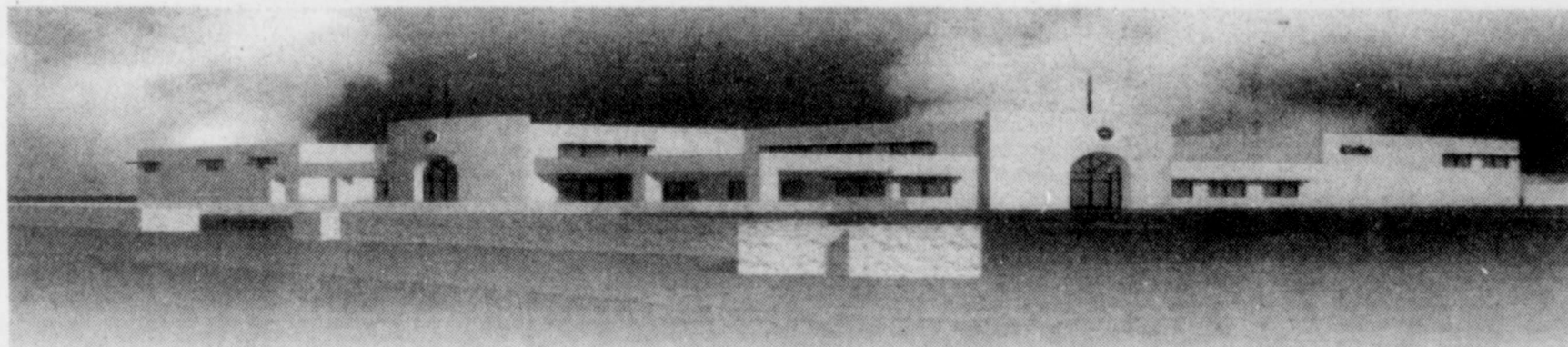
COLE CHRYSLER - DODGE

Local Sales Career Opportunity

Attention Graduating Seniors that want to stay in San Luis Obispo and earn a great Living in Sales.

Cole Chrysler - Dodge has an opportunity for you. We are offering a tremendous pay plan, 40 hour work week, 401K/profit sharing plan, medical, dental and vision. If you are interested in earning upwards of \$60,000 a year and being in business for yourself, then this is the opportunity of a lifetime!

At Cole Chrysler - Dodge we've established a 56 year reputation of honesty, integrity, and outstanding customer service...before and after the sale. With the hottest products on the market and as the fastest growing dealership in our county, we're adding sales professionals to help expand our market penetration. Having just completed construction on our state of the art, multi million dollar sales and service facility. Our new facility will make us the largest ChryslerDodge Dealership between Thousand Oaks and San Jose. When you join our team you will experience a two week orientation and training class with continuing and ongoing training. Our management team is one of the best in the county, and we are all Cal Poly Graduates that are here to help you succeed. See us at the CalPoly Spring Job Fair to get more information on this rare opportunity.



Cole Chrysler - Dodge  
3550 Broad Street, San Luis Obispo, CA

Phone. (805) 543-7321 www.colechryslerdodge.com  
EMAIL. dcole@colechryslerdodge.com OR twait@colechryslerdodge.com



## Directory

continued from page 8

on a variety of project types and at every level of project development — from conceptual design through construction. We work closely with developers, master builders, architects, and others on some of the foremost master planned communities, destination hotels and resorts, town centers, golf courses, and multi-family complexes in their locales.

### HSBC Card Services

HSBC — North America is one of the top 10 financial services companies in the United States with assets approaching \$300 billion. HSBC - North America includes all of HSBC's U.S. and Canadian businesses, including HSBC Finance Corporation (formerly Household International) businesses.

### ILA & Zammit Engineering Group

Our diverse and experienced staff offers independent engineering services in the following areas of expertise: Architectural Lighting Design including advanced lighting technology, architectural integration, energy efficiency and lighting control systems; Electrical Systems Design including campus-wide system, co generation facilities, emergency and standby, power distribution, substation design and power generation; Leadership in Energy and Environmental Design (LEED) including daylighting, energy optimization, light pollution reduction, renewable power (Photovoltaic) and systems integration; Specialized Systems including

data/LAN/WAN, fire alarm and life safety, security and telecommunications.

### Ima+design

Landscape architects, urban designers, planners, ima+design is derived from the Japanese word "ima" which translates philosophically to "between the past and the future." ima+design is led by Senior Principals Ron Izumita and Bill Schulz.

### Indyne Inc.

A highly diversified technology firm providing cost-effective, quality services and solutions: Enterprise Management, Information Technology & Communications, Science & Engineering, and Technical & Administrative Services.

### Inland Pacific Builders, Inc.

Inland Pacific Builders, Inc is a very successful Real Estate Development Company located in Santa Maria, California. Inland Pacific Builders offers exceptional and lucrative opportunities here on the Central Coast.

### Internal Revenue Service

The Internal Revenue Service is the largest bureau within the Department of Treasury. The mission of the Internal Revenue Service is to provide America's taxpayers top quality service by helping them understand and meet their tax responsibilities and by applying the tax law with integrity and fairness to all.

### J.D. Power and Associates

J.D. Power and Associates is an ISO 9001:2000 registered global marketing information services firm that helps businesses and consumers make better decisions through cred-

ible, meaningful, and easily accessible customer-based information. Headquartered in Westlake Village, California, the firm has five U.S. offices and international offices in London, Tokyo, Singapore, Sydney, and Toronto.

### J.R. Filanc Construction Company

J.R. Filanc Construction Company is a Class A general engineering contractor specializing in the construction of wastewater and water treatment facilities. Filanc has been in the business of constructing, renovating and expanding new and existing wastewater and water treatment facilities since 1952. Led by a team of experienced engineering and construction professionals, the company functions as a pure general contractor, often performing over 70 percent of the work with its own forces.

### Jacobs Facilities Inc.

From concept to completion and on to operation and maintenance, Jacobs provides clients with the full range of services: planning, configuration studies, energy optimization, environmental permitting, architecture, process and detailed engineering design, procurement, design/build, program/construction management, commissioning, turn-around planning and asset management.

### Jensen Corporation

Jensen Corporation and Jensen Landscape Services specialize in high-end landscape site work and Maintenance. Our services lines specialize in large commercial installation, commercial landscape maintenance, residential estate installation and maintenance, water management, irrigation, sports turf,

integrated pest management and design build.

### JMA Architecture Studios

JMA Architecture Studios was established in 1945 and today is the largest and oldest architectural firm in Nevada. JMA has evolved into six studios that specialize in the areas of Commercial, Interiors, Hospitality, Health Care, Education, and Public facilities. JMA brings together the best possible team of knowledge, talent and resources for the benefit of our clients. We have offices in Las Vegas and San Diego.

### JZMK Partners

JZMK Partners is a full service architectural and planning firm with over 40 years of experience in a variety of design types. JZMK Partners believes in quality design and we make every effort to insure that we deliver it. JZMK Partners has built a reputation based on the premise that design solutions should be creative as well as provide long term value.

### Katie O'Reilly Rogers Landscape Architecture

The Office of Katie O'Reilly Rogers, ASLA, is a progressive and dynamic Landscape Architectural firm dedicated to high quality creative design. The firm's expertise spans a wide range within the field of landscape architecture and environmental design, from estate residential and historical restoration to high-end commercial projects. The firm is composed of three Landscape Architects, as well as a talented support staff.

### The Keith Companies

Whatever your talents TKC is interested in having you become a part of our team of professionals.

TKC offers opportunities in many fields. Whether your interests are in engineering or one of the other professional disciplines, there is a place for you. The Keith Companies (TKC), founded in 1983 by its namesake Aram H. Keith, is a fully integrated, multi-disciplined engineering and consulting services firm. With specialized departments in land planning, civil engineering, surveying, mapping, environmental services, and water and cultural resources, TKC can service virtually any type of real estate development or public works project. In addition, TKC also provides other types of engineering disciplines such as structural, mechanical, electrical, instrumentation, chemical/process, and control systems integration.

### Keyence Corporation

Keyence provides high quality, cutting-edge sensing solutions to manufacturing companies all over the nation. We are an internationally recognized company with 13 affiliates across the globe. Keyence is experiencing rapid growth since its beginning back in 1974, with 30 percent annually being the norm. Our sales engineers are trained to be experts on our products and are highly regarded by our customers as a resource for solutions.

### Klassen Corporation

Klassen Corporation is a privately held architectural firm, general contractor, design-build constructor, and construction project manager. We take great pride in our quality performance and ethical business practices that have earned

see Directory, page 10

## Irrigation Designer Position Available

KTU+A, a San Diego-based land planning & landscape architecture firm, has a position available for an irrigation designer. The position will require close coordination with the Irrigation Project Manager, production of computer-generated drawings, specifications, cost estimates and as-builts for a variety of project types. Assignments may include site analysis, water audits, site visits, writing inspection reports, memos and technical reports.

### Minimum requirements:

- Current or completed college course work in landscape irrigation system design construction documents.
- Proficiency in AutoCAD 2004-2005, Microstation experience desired.
- Must be self-motivated, with good organization and communication skills.
- Field experience and construction administration a plus.
- Positive attitude and the ability to smile, even while working on deadlines.

KTU+A has a staff of 37 landscape architects, planners and support personnel. We are located in a restored Art Deco building in the Uptown area of San Diego, close to Balboa Park, the beach and restaurants. We offer competitive salaries, health and dental plans, and a 401(k) plan. KTU+A is an equal opportunity employer.

For consideration, please contact:

Bernard Everling  
KTU+A  
3916 Normal Street  
San Diego, CA 92103  
619 294-4477  
FAX 619 294-9965  
email: [bernard@ktua.com](mailto:bernard@ktua.com)  
[www.ktua.com](http://www.ktua.com)



### Great Employment Opportunities Available!

Join the leading suppliers of sustainable forest products in a rewarding and challenging environment. Located in beautiful Mendocino County, **Mendocino Redwood Company** and **Mendocino Forest Products** will be attending the Cal Poly job fair on May 12 to recruit for multiple employment opportunities including:

- Management/Executive Trainees
- Financial Analyst
- Industrial Engineer
- Forest Engineer
- Quality Assurance
- Geologist
- Inventory Technician
- Supply Chain Facilitator

The companies offer excellent compensation and benefits and encourage new college graduates and those returning to the workforce to apply. Interested applicants should submit a cover letter and resume to: [recruiter@mendoco.com](mailto:recruiter@mendoco.com). Please reference the job you are seeking in the e-mail subject line. To learn more about the companies visit [www.mrc.com](http://www.mrc.com) & [www.mfp.com](http://www.mfp.com).  
EOE/ADA



Directory

continued from page 9

the company a loyal list of repeat business clientele including major corporations, educational institutions, health care providers and agricultural industry members.

**KTU+A**  
KTU+A celebrates its thirty-fifth year providing planning and landscape architectural services to our clients in Southern California and beyond. We strive to expand our professional abilities and technology capabilities in seeking projects that strike a balance between the preservation of natural resources and appropriate levels of development. Landscape architectural services include urban design, recreation facilities, public facilities, transportation, revegetation and restoration, health care facilities, education facilities, corporate facilities, housing and military design. Planning capabilities include land use planning, transportation planning, recreation planning, habitat planning, environmental studies, design guidelines, military planning, visual impact assessments and GIS analysis.

**LGraphico**

LGraphico's focus and commitment is to be the Graphics Solution Provider of choice to the Entertainment, Advertising and Promotional industries. We are determined to build partnerships based on confidence and trust, supported by our ongoing leadership role in technology applications and our commitment to our excellence. Each employee is dedicated to providing exceptional quality, service and support to our clients.

**Landscape Development, Inc.**

Landscape Development, Inc. was founded in 1982 with the goal of delivering the highest quality landscape services to the California market. Landscape Development's headquarters is in Valencia. In 2000, Landscape Development, Inc., expanded to open an office in San Diego, Ca. Since the launch of the San Diego Division, we have added divisional offices in Norco, Bakersfield, and Ventura.

**Lim Chang Rohling & Associates**

Lim Chang Rohling & Associates is a medium sized architectural firm providing high quality residential design services. LCRA's primary focus is on single and multi-family luxury housing throughout California for the publicly held builder/developer clientele. Our informal office atmosphere provides every staff member a broad range of responsibilities in both design and production with opportunities in hand drawn conceptual design and computer aided graphics. Located in the heart of vibrant Old Town Pasadena, we offer comfortable working conditions in a contemporary environment.

**Lionakis Beaumont Design Group, Inc.**

LBDG's in-house architectural, structural engineering, planning and interiors teams collaborate to provide our clients with award winning & comprehensive design solutions. Key to Lionakis Beaumont — and important to a project's ultimate success — are respect and integrity. We honor ideas and expressions as part of our team approach. At LBDG we value challenge and enjoy the excitement and

opportunities presented by our work. We have fun working together to meet our client needs. LBDG as a growth oriented firm has strategic goals which promote opportunity for all staff.

**LPA, Inc.**

LPA, Inc. is one of the largest architectural, planning, landscape, and interior design firms in California. Founded in 1965, LPA has a long history of architectural design and project management experience. LPA provides a full scope of architectural, planning, landscape architecture, and interior design services from early program development to final design documents through completion of construction administration.

**LPA Sacramento, Inc.**

LPA Sacramento, Inc. is a multiple discipline design firm offering services in architecture, planning, landscape architecture, interior design, and graphics. For over 25 years we have focused on how the total physical environment, from open space and landscape, to buildings and their interiors, affects people. We are committed to uniting function, aesthetics, environmental quality and economic considerations to provide our clients' projects with a distinctive sense of identity and place. We work with public and private clients to maximize site potentials with architecture, landscape and interior design elements, and create places that are functional and inspiring.

**LR Design Associates**

LR Design Associates is a moderate sized, award winning, service oriented firm located in Oceanside, California. Project emphasis is in

the area of K-12 through Junior College educational facilities. Projects range from the modernization and additions to existing school campuses to new Elementary and Middle School projects, multi-story Science and Technology Buildings, to Junior College Libraries, Science Labs and Student Union Centers.

**LSI Logic Corp.**

LSI Logic is valued for its technology leadership and ability to provide complete solutions for our customers. We offer three enabling system-on-a-chip technologies — Platform ASICs, standard-cell ASICs, and standard products — as well as host bus adapters and supporting software for our global customer base.

**Lynx Iron Corp.**

Incorporated in June of 2000, Lynx Iron has emerged as one of the largest and most respected steel fabrication companies in Central California — a testament to our determination, hard work, and superior performance on a broad spectrum of projects. The company's primary plant, located in Bakersfield, sits on more than 9 acres and houses a 35,000 square foot structural fabrication facility, and a 15,000 square foot facility for our main operations and clerical offices. In addition our in house detailing and production staff are located in an adjoining facility.

**MacKay & Soms**

MacKay & Soms was founded in Sunnyvale by Donald G. MacKay and George E. Soms in 1953. Today MacKay & Soms employs approximately 180 engineers, surveyors, planners and support staff

and is consistently listed among the largest 300 design firms in the United States by the Engineering News Record (ENR). The firm offers a broad range of civil engineering, surveying and land planning services from offices in the San Francisco Bay Area, and the Sacramento Valley.

**Masterfoods USA**

Masterfoods USA is a diversified, multinational company, operating on a global scale in more than 30 countries, yet is privately owned. We are a world leader in each of our main businesses, consisting of more than five product groups, including snack foods, main meal foods, pet care products, electronics and information. We offer an excellent compensation package, competitive benefits package, unique work environment and opportunities for professional growth.

**Maxim Healthcare Services**

Maxim Healthcare Services provides medical staffing, home health and wellness services. Founded in 1988, Maxim has rapidly expanded to include nine divisions and over 200 branch offices in 38 states. We have earned a position as an innovative competitor in the health care industry through our quality of patient care, commitment to employee development and emphasis on customer service.

**Maxim Integrated Products**

Established in 1983, Maxim Integrated Products is a worldwide leader in design, development, and manufacture of linear and mixed-signal integrated circuits (ICs). Maxim circuits "connect" the real world and digital world by detect-

see Directory, page 13

See Yourself at



See Yourself Here. See a company like no other. See the rewards. See a world of opportunity. See yourself in red. See you soon.

**Executive Team Leaders \* Executive Team Interns**

- Deliver fast, fun and friendly service to our Guests
- Drive profitable sales by leading the store team in all areas including instocks, great looking store, speed and service, and freshness
- Coaching, developing, and assessing direct reports to ensure successful job performance
- Evaluate and analyze store financial reports and develop and implement adjustments to meet financial goals

**We're looking for:**

- Four-year college degree
- Previous retail merchandising and operations management
- Strong cognitive skills including problem analysis, decision making, and quantitative analysis
- Ability to demonstrate strong leadership skills relating to Guest and team member interaction
- Flexible work schedule (e.g., nights, overnights, weekends, holidays, long hours)

**\* Assets Protection**

- Create a safe environment for Guests and Team Members
- Identify, investigate and resolve internal and external theft issues
- Build strong relationships with law enforcement and other community agencies
- Utilize reports, intelligence data and equipment to develop and implement solutions to investigative issues

**We're looking for:**

- Four-year college degree
- Two years investigativs and/or retail store experience
- Ability to work with highly confidential information
- Flexible work schedule (e.g., nights, overnights, weekends, holidays, long hours)
- Ability to apprehend and confront Guests or team members in a calm, professional manner

**See the rewards:**

- Competitive compensation package, including exceptional 401(k)
- Competitive benefits
- Bonus eligibility
- Professional growth opportunities
- Target merchandise discount

To apply, please visit our booth at the Spring Job Fair, or send your resume to Tasha.Clark@Target.com



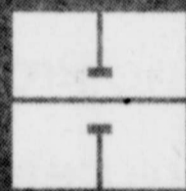
©2005 Target Stores. The Bullseye Design is a registered trademark of Target Brands, Inc. All rights reserved.





# Shaping the Future One Project at a Time

- Program Management
- Project/Construction Management
- Civil Design
- Management Services
- Financial & Assessment Engineering
- Asset Management / GASB
- Development Management & Plan Checking
- Building & Safety Services



**Harris & Associates** SM

800.827.4901  
harris-assoc.com

## CHOOSE YOUR FUTURE TODAY.

**KLASSEN CORPORATION** has served the Central Valley for nearly 30 years.

As an Architecture and Construction firm, Klassen carries the distinct mark of a Master Builder. This dual expertise provides employees with a dynamic and rewarding work environment, and the opportunity to participate on a winning team.

We are currently seeking qualified applicants for the following positions in...

**ARCHITECTURE:**

Project Architect  
Job Captain  
CADD Draftsman

**CONSTRUCTION:**

Project Manager  
Superintendent  
Estimator

For information about a career at Klassen Corporation or for details about our Intern Development and Mentoring Programs...

**VISIT OUR WEBSITE:**

[www.klassencorp.com](http://www.klassencorp.com)

**SEND YOUR RESUME:**

2021 Westwind Drive  
Bakersfield, CA 93301

**CONTACT HUMAN RESOURCES:**

661-324-3000 phone  
661-324-3900 fax

*Klassen Corporation is an Equal Opportunity Employer.*



**Klassen**  
corporation

Architecture • Construction

*"A tradition of excellence in design and construction"*



# LAgraphico

CREATIVE IMAGING, PREMEDIA, PRINTING  
3800 Vanowen Street • Burbank, CA 91505 • 818.295.6100

One of the premier companies of its kind in the industry, LAgraphico is celebrating 25 successful years in the business of providing graphic solutions for its enviable list of entertainment, corporate and advertising agency clients through pre-media and pre-press/print production. It's been a long but enjoyable road for the founders of the company, Alan Shapiro (President) and his wife Liz (CEO).

## **Mission Statement:**

LAgraphico's focus and commitment is to be the Graphics Solution Provider of choice to the Entertainment, Advertising and Promotional industries.

We are determined to build partnerships based on confidence and trust, supported by our ongoing leadership role in technology applications and our commitment to excellence.

Each employee is dedicated to providing exceptional quality, service and support to our clients.

[www.lagraphico.com](http://www.lagraphico.com)

The Keith Companies

**TKC**

The Keith Companies (NASDAQ:TKCI), is a multi-disciplined engineering and consulting services firm with over 18 locations in the West and Midwest United States.

With specialized departments in land planning, civil engineering, surveying, mapping, environmental services, and water and cultural resources, TKC can service virtually any type of real estate development or public works project. *Visit us at [www.keithco.com](http://www.keithco.com)!*

Bring your resume and come visit us on Thursday, May 12th on campus at the Cal Poly San Luis Obispo Spring Job Fair and learn about current opportunities including:

### **Landscape Designer – San Marcos, Calif. (North San Diego County)**

Working with the Landscape Project Manager, responsibilities will include support for the landscape design team in the preparation of landscape conceptual plans, presentation graphics, construction documents, specifications, details, quantity take-offs, and landscape calculations. Candidate should possess design skills and education in all aspects of Landscape Architecture including planting design, irrigation design, site design, and general landscape construction detailing. Proficiency in AutoCAD a must.

### **Jr. Engineer – Locations throughout California**

Requires a BS degree in Civil Engineering; EIT preferred. Good verbal and written communication skills. Strong computer skills with drainage and AutoCAD software preferred. Some previous engineering experience preferred. Will perform entry-level civil engineering design under Project Managers and Engineers, including basic design work for street, storm drains, sewer and other public works facilities. Computes earthwork quantities, quantity of materials estimates; assists w/ preparing grading plans and plot plans; assists w/AutoCAD plan sheet set-up.

We look forward to seeing you on Thursday, May 12th at The Keith Companies' booth. If you are not able to attend, please apply online at <http://www.keithco.com/eop.asp>.

EOE.



**BASSENIAN**  
*architects*  
**LAGONI**

Are you creative, highly motivated and a team player?

We are an Internationally recognized award winning Architectural and Land Planning firm with immediate career opportunities for you. We offer an outstanding work environment and competitive compensation/benefit package.

[www.bassenianlagoni.com](http://www.bassenianlagoni.com)

**JUNIOR DESIGNER**

Possess strong organizational and presentation skills.

**JOB CAPTAIN/JR. DRAFTERS**

Single/Multi-Family residential and Mixed Use experience, utilizing AutoCAD or DataCAD.

**GRAPHICS + COLOR DEPT. ASSISTANT**

Jr./Intermediate  
Strong organizational/presentation skills, knowledge in Photoshop helpful.

**BASSENIAN/LAGONI ARCHITECTS**

Human Resource Dept.

2031 Orchard Drive

Newport Beach, CA 92660

FAX 949.553.0548

**CAREER FAIR**

Wednesday, May 11, 2005 13

**Directory**

*continued from page 10*

ing, measuring, amplifying, and converting real-world signals, such as temperature, pressure, or sound, into the digital signals necessary for computer processing.

**McCall Design Group**

McCall Design Group was established in 1989 as a full service architecture firm. Currently employing approximately 40 people, the firm specializes primarily in retail and hospitality projects. We work with national and international retail and hospitality giants such as Limited Brands, Inc.; Starwood Hotels and Resorts Worldwide, Inc.; Gap, Inc.; and

Williams-Sonoma, Inc.  
**Mendocino Forest Products Company**

Mendocino Forest Products Company, LLC, located in Northern California, is a leader in the manufacture and supply of superior quality decking and fencing products. The Company partners with major retailers by leveraging innovative approaches to manufacturing, distribution, supply chain management, marketing, merchandising, and customer service. Stewardship is a core value: Mendocino Forest Products aims to exceed the collective interests of the environment, community, customers and partners.

see Directory, page 15

» LIM CHANG ROHLING & ASSOCIATES

Lim Chang Rohling & Associates is a medium sized architectural firm providing high quality residential design services. LCRA's primary focus is on single and multi-family luxury housing throughout California for the publicly held builder/developer clientele.

Our informal office atmosphere provides every staff member a broad range of responsibilities in both design and production with opportunities in hand drawn conceptual design and computer aided graphics.

Located in the heart of vibrant Old Town Pasadena, we offer comfortable working conditions in a contemporary environment. Among our benefits are generous insurance and 401K programs that rival those of much larger firms.

We are searching for enthusiastic architectural designers and production staff members with a desire for professional growth and long-term commitment. Practical residential experience and good communication skills are a strong advantage. In addition to having a skilled hand for sketching and drafting, applicants should also be proficient at AutoCAD 2002.



See yourself here. See yourself in red. See where risk-taking is applauded. See your next ground-breaking idea be rewarded. See community giving being celebrated. See the hip new thing. See the new style. See your future. See you soon.

**INTERNS & GRADUATES**

Target is growing across the country at an incredible pace...and that requires a strong, responsive supply chain team to ensure our success. Our Distribution Center in

**Bakersfield, CA**

has opportunities for both interns and Full Time graduates to join our team! We will be on Campus

**Thursday, May 12th, 2005 • 9:30am - 1:00pm**  
**at the Spring Jobfair**

We offer an attractive compensation package, relocation assistance, a fun yet professional culture and excellent opportunity for career growth.

**To apply, visit [target.com/careers](http://target.com/careers).**

Opportunities are available nationwide.

©2005 Target Stores. The Bullseye Design is a registered trademark of Target Brands, Inc. All rights reserved. Target is an equal opportunity employer and is committed to a smoke-free/drug-free workplace.



[target.com/careers](http://target.com/careers)

**EXCELLENCE IN SCHOOL PLANNING & DESIGN FOR 42 years**

**SPRING JOB FAIR**  
**MAY 13, 2005**



- SEEKING GRADS - FULL TIME AS AN INTERN ARCHITECT.
- PJHM SUPPORTS THE INTERN DEVELOPMENT PROGRAM.

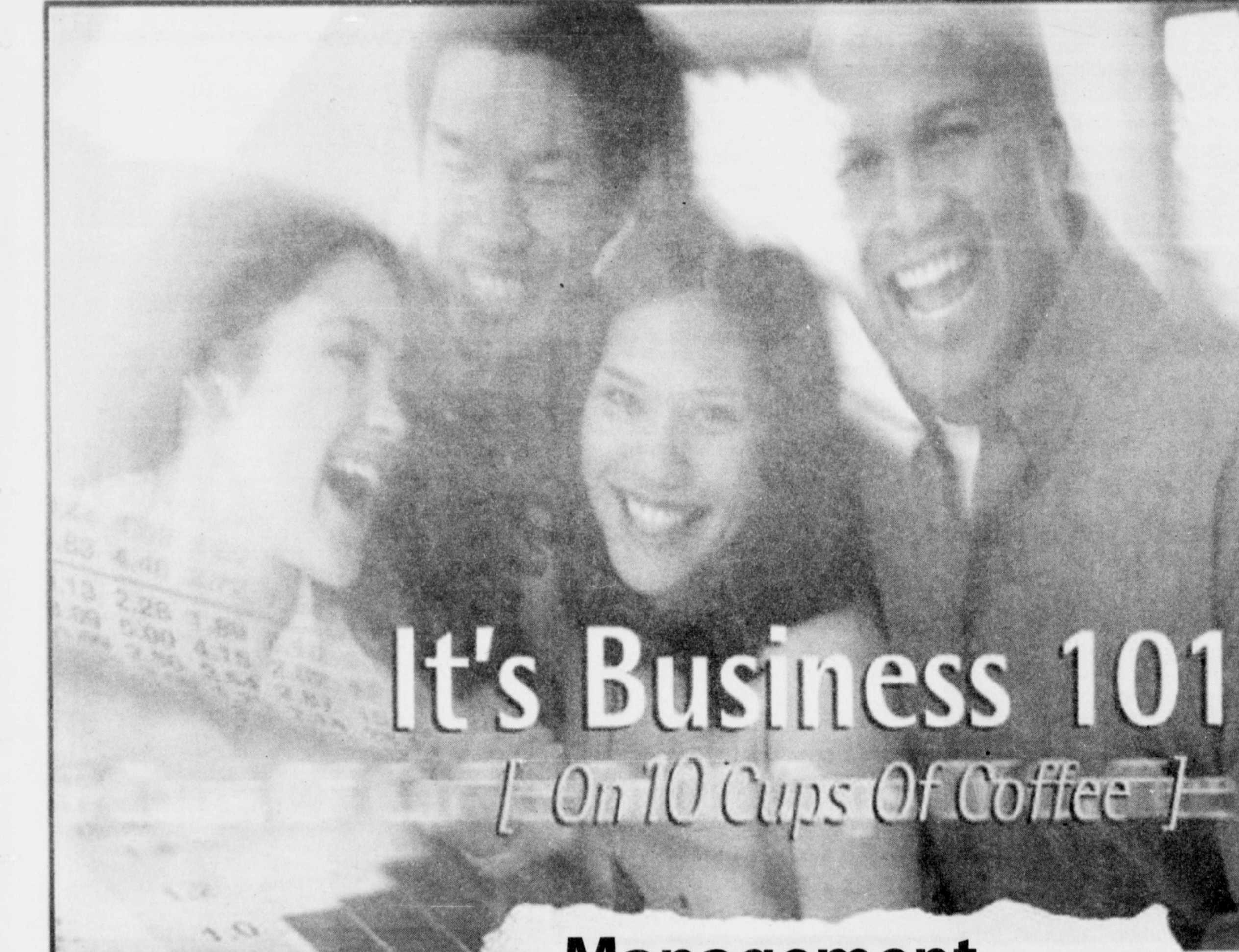


**LIONAKIS BEAUMONT DESIGN GROUP INC.**  
Sacramento | Modesto

The largest A/E firm in the Sacramento and Central Valley regions, presents exceptional career opportunities for skilled architects and designers in our Sacramento and Modesto offices. Imagine the possibilities to influence and transform the future of our community and regions. We are currently seeking highly motivated candidates with a passion to contribute and create endless possibilities in a teaming environment within our Healthcare, Education and Civic/Commercial Studios. Candidates must have a Bachelor's degree in Architecture.

For a complete listing of all job opportunities visit our website at: [www.lbdg.com](http://www.lbdg.com). Please apply via the careers page of our website, e-mail [HR@lbdg.com](mailto:HR@lbdg.com), or FAX to 916/558-1924. EOE.





# It's Business 101

*[ On 10 Cups Of Coffee ]*

## Management

**Have you..... Opportunities!!**

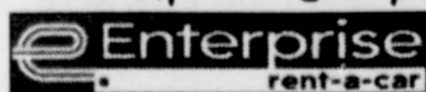
- Had your 10 cups of coffee?
- Created your resume?
- Bought your Suit?
- Set up Interview with Enterprise?**

OR

Apply online at [www.enterprise.com/careers](http://www.enterprise.com/careers) and  
Contact your local Enterprise Recruiter

David Dutchen  
College Relations Manager  
[David.a.dutchen@erac.com](mailto:David.a.dutchen@erac.com)  
909-821-7785

*my personal enterprise.*



*We are an equal opportunity employer. MFDV*



Directory

continued from page 13

Moonstone Hotels

Moonstone Hotels is a growing hotel company based out of Cambria on the beautiful central coast of California. The majority of Moonstone Hotel Properties are located on Moonstone Beach in Cambria however additional locations include Monterey, Carmel, Yosemite and Cottage Grove, Ore.

**US Navy**  
US Navy, Naval Facilities Engineering Command-Southwest, Integrated Product Team (IPT) West manages master planning, environmental planning, real estate acquisition/leasing/disposal, environmental compliance and cleanup, design, and construction management for U.S. Navy shore bases in Northern and Central California, western Nevada, and Travis Air Force Base located near Sacramento.

**Nevada County Economic Resource Council**

The Nevada County Economic Resource Council serves as a central point of contact for employers requiring business assistance or considering expansion or relocation. We are a non-profit organization composed of business, government, community, and educational entities. Translated into real terms, that means the entity you need to reach is probably a member.

**Northwestern Mutual Financial Network**

The mission of Northwestern Mutual Financial Network is to develop enduring relationships with our clients by providing expert guidance for a lifetime of

financial security.  
**Nunhems USA, Inc.**  
Nunhems USA, Inc. a world leader in the development, production and marketing of hybrid vegetable seed and seed technology. For more than 150 years, the company has emphasized quality in every step of their operations from the development of high-yielding, disease resistant varieties to our highly trained technical and support staff. Headquartered in Parma, Idaho and part of an international enterprise in research, breeding, production, marketing and sales of vegetable seeds, Nunhems USA, Inc. is committed to providing quality hybrid seed throughout the Americas.

**NUVIS**  
NUVIS influences design for residential community living, public spaces, natural experiences, image infrastructure, urban sustainability, transportation corridors, and entertainment. Our goal is to create inspired outdoor venues that exhibit a sense of place, opportunity for interaction, and dramatic results from texture, form, color, and pattern.

**Odyssey Design Group**  
Odyssey Design Group is a growing Landscape Architecture firm in Stockton, CA and is a division of Odyssey Landscape Company, Inc. We offer candidates the opportunity to advance their abilities, goals and responsibilities based upon the individuals drive and aspirations. We are involved in a broad spectrum of projects ranging from streetscapes, parks, common areas, model homes, typical development front yards, apartments, town houses and commercial build-

ings as well as Storm Water Pollution Prevention Plans.  
**Opus West Construction Corp.**  
The Opus Group is composed of full-service companies offering vertically integrated services and expertise in real estate development, architecture, engineering, construction, property management, financing, leasing and sales under one roof. Our design-build approach offers imaginative design, development know-how, emphasis on quality, commitment to on-time and on-budget construction, and sound financial strength and flexibility to clients nationwide.

**The Panda Restaurant Group**  
Picture yourself working for a company committed to their employees development, a company that trains and empowers its employees to grow! The Panda Restaurant Group is the parent company of restaurants that include Panda Express, Panda Inn and Hibachi-San, each providing different flavors, settings and service styles. Together, the success of these unique dining concepts has made their family-owned parent company, Panda Restaurant Group, the largest Chinese food service provider in the nation. With annual sales approaching \$600 million a growth rate of 20 percent, and more than 700 restaurant locations, the privately-held Panda Restaurant Group, dramatically outperforms its competitors.

**Parsons Corporation**  
Parsons, a premier full-service engineering and construction firm, is a leader in many diversified markets, such as facilities, industrial processes, communications, infra-

structure, transportation, water, advanced technology, environmental, and planning. Parsons provides technical and managerial solutions to private industrial customers worldwide as well as federal, regional, and local government agencies. Parsons is a pioneer in many first-of-a-kind projects and has earned a reputation for developing and using leading-edge concepts to solve complex and challenging problems. Parsons has a sixty-year history and tremendous global presence with more than 250 offices and 9,100 current employees.

**Perkowitz & Ruth Architects**  
In our 25 years of business, Perkowitz & Ruth has earned a reputation as creative and dedicated professionals. Today P+R is recognized as an expert in retail and entertainment retail design and is currently expanding its scope to include hospitality and recently developed a subdivision, called Studio One Eleven. The company's goals are to ensure that a project attains its design, budget and scheduling goals and is successful in the eyes of all team members, each of whom plays an important role in its success.

**Phillips Metsch Sweeney Moore Architects**  
Phillips Metsch Sweeney Moore Architects (PMSM) is a full-service design practice providing public education, healthcare, and municipal clients with planning, strategic programming, architectural design, project management, and construction administration services.

**PJHM Architects Southwest, Inc.**  
PJHM Architects Southwest, Inc., is a 40-year-old design firm special-

izing in the primary and secondary educational facility arena. Our clients are school districts throughout California. We currently employ several CalPoly graduates and are looking for a few more!

**Pulte Homes**  
For more than 50 years, Pulte Homes has been helping individuals, couples and families build a better life. Today, the Company's operations span more than 40 markets throughout the United States. Through its Del Webb brand, the Company is now the country's leading builder of Active Adult communities.

**Quad Knopf Inc.**  
Quad Knopf has become one of central California's largest civil engineering firms and offers employees competitive salaries and a comprehensive benefits package. Quad Knopf fosters an entrepreneurial work environment and offers excellent opportunities for highly motivated team players that thrive in a collaborative work atmosphere.

**R&S Tavares Associates**  
Structural Engineering and Architectural Design firm located in Riverbank, providing engineering and design services to California and other states.

**Radix Technologies**  
Radix Technologies designs, develops and delivers state-of-the-art signal reconnaissance, communications, navigation, and signal processing products and solutions. Radix is a leader in the development of advanced signal processing techniques and products. We specialize in solving signal reconnais-

see Directory, page 18



Looking for a career in Law Enforcement?  
Great Pay and Benefits?

The Santa Barbara County Probation Department is recruiting for  
**Juvenile Institution Officers &  
Deputy Probation Officers**

JIO - \$38,626 - \$47,133/YR DOE  
DPO - \$40,602 - \$49,546/YR DOE

To apply, or for more information, see our Website at [www.sbcountyjobs.com](http://www.sbcountyjobs.com) or call 805-568-2800

**OPEN HOUSE**

To learn more about becoming a Juvenile Institution Officer or a Deputy Probation Officer join us for our Open-House, Saturday, May 14, from 1 PM-4 PM at:

**Susan J. Gionfriddo Juvenile Justice Center Court Complex  
4263 California Blvd., (off 812 W. Foster Rd)  
Santa Maria, CA 93455**

- ▶ Free food and drinks!
- ▶ See our new Juvenile Justice Center!
- ▶ Learn about Probation Department Careers!



Building Excellence in California

**LOCAL CAREER OPPORTUNITIES  
in Project Management  
and Construction Management  
in Santa Barbara, Riverside  
and Kern Counties.**

**Come visit us at the Spring Job Fair  
on May 13th or fax your resume to  
805-346-6584**

**NOW HIRING DESIGNERS**

LPA Sacramento, Inc. is currently hiring entry-level **architecture** and **landscape architecture designers** to join our team of award-winning professionals. One of the largest architectural firms in the California Central Valley, LPA Sacramento, Inc. represents a sophisticated, vital organization with a rich 28-year history. With over 200 national and state-wide design awards, our firm offers the opportunity to work on the most exciting projects in the region.

- /architecture:
- /planning:
- /landscape architecture:
- /interiors:
- /graphics:

Visit us at the Cal Poly Spring Job Fair, Friday, May 13 2005 at Chumash Auditorium.

[www.lpasacramento.com](http://www.lpasacramento.com)





# Award Winning Firm Seeking Creative, Cutting-Edge Architects

To Fulfill Your Career Potential, JMA Architecture Studios, Nevada's Largest Architecture Firm, Can Provide You Outstanding Project Opportunities. Our Las Vegas Office, San Diego Office and New Sacramento Office (Coming Soon) have Immediate Openings for the Following Full Time Positions:

Designers  
Intern Architects  
Project Managers

## JMA Architecture Studios

- Six Studio Format
  - Commercial
  - Hospitality
  - Healthcare
  - Education
  - Public
  - Interiors
- Nevada's Largest and Oldest Architecture Firm
- 2004 AIA Western Mountain Region FIRM OF THE YEAR
- Selected #1 2004 Best Place to Work by Southern Nevada Human Resource Association

Send your Portfolio and Salary History to:

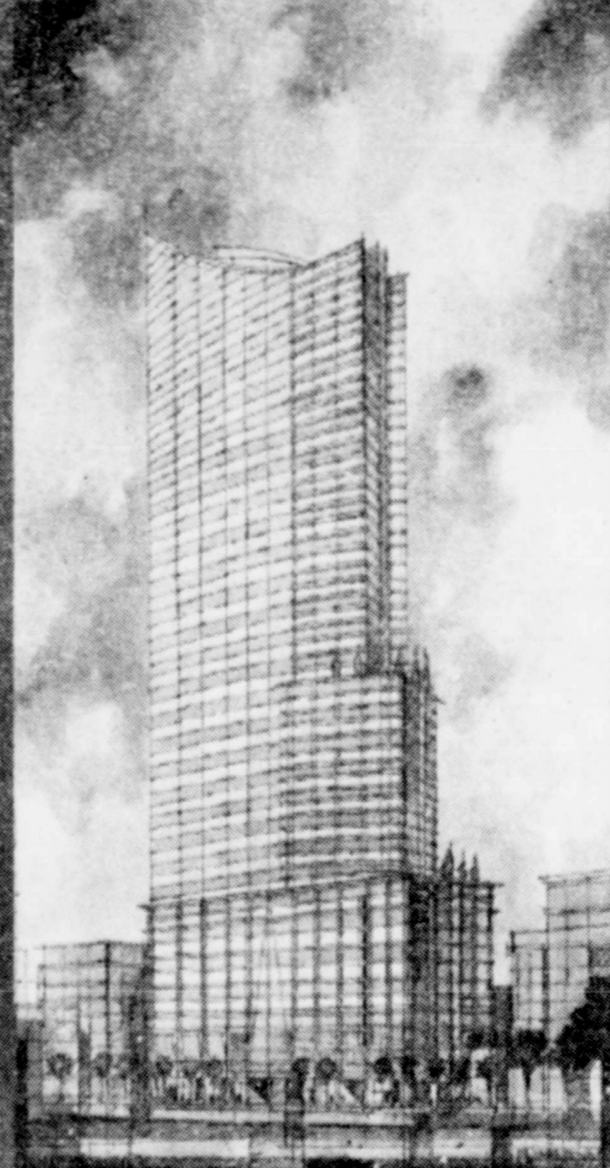
JMA ARCHITECTURE STUDIOS  
Attn: Human Resources Manager  
10150 Covington Cross  
Las Vegas, NV 89144  
Email: [hr@jmaarch.com](mailto:hr@jmaarch.com)  
Fax: 702.731.2039

Equal Opportunity Employer

If you have any questions please stop by our booth at the Spring Job Fair, Friday, May 13, 2005.

JMA ARCHITECTURE STUDIOS

Thomas J. Schenman, AIA, President





# Spring Job Fair

## Chumash Auditorium

Open Forum: 9:30 am - 1:00 pm

Interviews: 2:00 - 4:30 pm

**Thursday**  
**May 12, 2005**

All Majors

**Friday**  
**May 13, 2005**

CAED

Targeting the College of Architecture  
& Environmental Design

### Companies on Thursday \*

ABERCROMBIE & FITCH  
AMERICAN EXPRESS FINANCIAL  
AMGEN, INC.  
ANRITSU COMPANY  
APPLIED TECHNOLOGIES ASSOCIATES  
ARCADIS G&M  
ASYMTEK  
BERCHTOLD EQUIPMENT COMPANY  
BOBRICK WASHROOM EQUIPMENT, INC.  
BRIDGE BANK  
CALIFORNIA AIR RESOURCES BOARD  
CALIFORNIA DEPT OF TOXIC SUBSTANCES CONTROL  
CALIFORNIA DEPT OF WATER RESOURCES  
CALIFORNIA STATE BOARD OF EQUALIZATION  
CARGILL ANIMAL NUTRITION  
CAROLLO ENGINEERS  
CENTRAL VALLEY REGIONAL WATER QUALITY CONTROL BD.  
CITIBANK  
COLE CHRYSLER DODGE  
CSG CONSULTANTS, INC.  
DEL MONTE FOODS  
DRUG ENFORCEMENT ADMINISTRATION  
E & J GALLO  
ECONOMIC OPPORTUNITY COMMISSION OF SAN LUIS OBISPO  
EDO CORPORATION  
EDWARDS AIR FORCE BASE  
ENTERPRISE  
FASTENAL COMPANY  
FCI CONSTRUCTORS, INC.  
FETZER FIVE RIVERS  
HALLIBURTON ENERGY SERVICES  
HDR ENGINEERING INC.  
HENRY WINE GROUP  
HITACHI GLOBAL STORAGE TECHNOLOGIES  
HSBC CARD SERVICES  
IEC CORPORATION  
ILA + ZAMMIT ENGINEERING GROUP  
INDYNE, INC.  
INTERNAL REVENUE SERVICE  
J.D. POWER & ASSOCIATES  
JENSEN CORP. LANDSCAPE CONTRACTORS  
KEITH COMPANIES  
LAGRAPHICO  
LSI LOGIC CORPORATION  
LYNX IRON CORP  
MASTERFOODS USA  
MAXIM HEALTHCARE SERVICES  
MAXIM INTEGRATED PRODUCTS  
MENDOCINO FOREST PRODUCTS  
MOONSTONE HOTELS  
NAVFAC-SW AND US NAVY, INTEGRATED PRODUCT TEAM WEST  
NEVADA COUNTY ECONOMIC RESOURCE COUNCIL  
NORTHWESTERN MUTUAL FINANCIAL NETWORK  
NUMHENS USA, INC.  
PARSONS CORPORATION  
PULTE HOMES  
QUAD-KNOPF INC.  
RADIX TECHNOLOGIES  
RAYTHEON COMPANY  
RELIANCE STANDARD LIFE INSURANCE  
ROLF JENSEN & ASSOCIATES, INC.  
SABROSO COMPANY  
SANTA BARBARA COUNTY  
SCORE! EDUCATIONAL CENTERS  
SHERWIN-WILLIAMS COMPANY  
SHIMMICK CONSTRUCTION COMPANY INC.  
SOUTHERN CALIFORNIA EDISON  
SOUTHERN WINE AND SPIRITS  
STRYKER ENDOSCOPY  
TARGET DISTRIBUTION  
TARGET STORES  
UNITED DEFENSE LP  
USS POSCO INDUSTRIES  
VISA  
WALGREENS  
WALSH ENGINEERS, INC.  
WD PARTNERS  
WELLS FARGO FINANCIAL  
WM. WRIGLEY JR. COMPANY  
YAHOO! INC.

### Companies on Friday \*

AEDIS, INC.  
AMIT APEL DESIGN, INC.  
BASSENIAN LAGONI ARCHITECTS  
BEAUCHAMP ENGINEERING, INC.  
BILL GOULD DESIGN ART & ARCHITECTURE  
BOVIS LEND LEASE INC.  
BRERETON ARCHITECTS  
CALLANDER ASSOCIATES LANDSCAPE ARCHITECTURE, INC.  
CALPO HOM & DONG ARCHITECTS  
CARLILE COATSWORTH ARCHITECTS, INC.  
CAROLLO ENGINEERS  
CAS ARCHITECTS  
COLLABORATIVE WEST  
COLOMBO CONSTRUCTION CO., INC.  
CONCEPTUAL DESIGN AND PLANNING  
CSG CONSULTANTS, INC.  
DAHLIN GROUP ARCHITECTURE PLANNING  
DEEMS LEWIS MCKINLEY, ARCHITECTS/ENGINEERS  
DESIGN CONSORTIUM  
DESIGN PARTNERSHIP  
DRUG ENFORCEMENT ADMINISTRATION  
EWINGCOLE  
FIELD PAOLI ARCHITECTS  
GILLESPIE DESIGN GROUP  
GOLBA ARCHITECTURE, INC.  
GOTHIC LANDSCAPING  
HARRIS & ASSOCIATES  
HBE CORPORATION  
HGA ARCHITECTS AND ENGINEERS  
HKS ARCHITECTS INC  
HLA GROUP, LANDSCAPE ARCHITECTS & PLANNERS  
HMR ARCHITECTS, INC.  
HOK  
HRP LANDESIGN  
ILA + ZAMMIT ENGINEERING GROUP  
IMA+DESIGN  
INLAND PACIFIC BUILDERS, INC.  
JACOBS FACILITIES, INC. (JFI)  
JMA ARCHITECTURE STUDIOS  
JZMK PARTNERS  
KATIE O'REILLY ROGERS, LANDSCAPE ARCHITECTURE  
KLASSEN CORPORATION  
KTGY GROUP, INC.  
KTU + A  
LANDSCAPE DEVELOPMENT, INC.  
LIM CHANG ROHLING & ASSOCIATES  
LIONAKIS BEAUMONT DESIGN GROUP, INC.  
LPA INC.  
LPA SACRAMENTO, INC.  
LR DESIGN ASSOCIATES  
LYNX IRON CORP  
MACKAY & SOMPS  
MCCALL DESIGN GROUP  
MOONSTONE HOTELS  
NEVADA COUNTY ECONOMIC RESOURCE COUNCIL  
NUVIS  
ODYSSEY LANDSCAPE COMPANY, INC.  
OPUS WEST CONSTRUCTION CORP.  
PANDA RESTAURANT GROUP  
PARSONS CORPORATION  
PERKOWITZ + RUTH ARCHITECTS  
PHILLIPS METSCH SWEENEY MOORE ARCHITECTS  
PJHM ARCHITECTS SOUTHWEST, INC.  
PULTE HOMES  
R&S TAVARES ASSOCIATES  
RRM DESIGN GROUP  
SACRAMENTO, CITY OF  
SANTA BARBARA COUNTY  
SDG ARCHITECTS, INC.  
SHIMMICK CONSTRUCTION COMPANY INC.  
SHLEMMER+ALGAZE+ASSOCIATES  
SSA LANDSCAPE ARCHITECTS, INC.  
STEINBERG GROUP  
SUPERIOR TILE & STONE  
TETER A&E  
UCI CONSTRUCTION, INC.  
VANDERTOOLEN ASSOCIATES  
VANIR CONSTRUCTION MANAGEMENT, INC.  
WARNER GROUP ARCHITECTS, INC.  
WD PARTNERS  
WENELL, MATTHEIS, BOWE  
WILLIAM HEZMALHALCH ARCHITECTS, INC.  
WIMBERLY ALLISON TONG & GOO

\* For the complete list of companies and job descriptions, logon to [my.calpoly.edu](http://my.calpoly.edu), click on *Mustang Jobs* and look under *Events!*

Career Services

Cal Poly, Building 124  
805-756-2501

[www.careerservices.calpoly.edu](http://www.careerservices.calpoly.edu)



**Directory**

*continued from page 15*

sance, communications, location and classification problems in the presence of severe spectral congestion using advanced signal process-

ing algorithms.

**Raytheon Company**

Raytheon Company is a global leader in defense electronics and complex integrated information systems. We are focused on defense, government and commercial elec-

tronics and business aviation and special mission aircraft. The company is well positioned for growth in missile defense, intelligence, surveillance and reconnaissance; precision strike; homeland security and technical services.

**Reliance Standard Life Insurance Company**

Reliance Standard Life Insurance Company (RSL), is a leading national insurer of employee benefits founded in 1907, and a subsidiary of the Delphi Financial Group, Inc. (DFG), a highly successful integrated employee benefit services company with 25 Regional Sales Offices and approximately \$5.0 billion in assets.

**Rolf Jensen & Associates**

Rolf Jensen & Associates provides a comprehensive range of engineering and consulting services for clients on projects around the world. Since our very first consulting assignment in 1969 stemming from the devastating fire at

Chicago's McCormick Place, Rolf Jensen & Associates has earned a reputation for performance. "Technical excellence and fast response" is not a slogan, it's our professional mission.

**RRM Design Group**

RRM Design Group is a multi-disciplined design firm with four offices and exciting projects throughout California. We hire talented architects, landscape architects, planners, urban designers, civil engineers, and surveyors to be a part of our team in the following project types: Community Planning and Design, Public Safety Planning & Design, Parks, Trails & Open Space, Education Campuses & Facilities, Urban Revitalization, and local practice.

**Sabroso Company**

Sabroso Company manufactures products in Medford & Woodburn Oregon and in Oxnard. We have a large product line that includes purees, puree concentrates, juice concentrates, individually quick and block frozen fruits and sugar added products.

**City of Sacramento**

The City of Sacramento is the cultural, educational, business, and governmental center of a four-county metropolitan region. A dynamic business sector; an expanding light rail system; affordable housing; growing cultural, educational, and medical facilities serve the needs of the 1.5 million people in the greater Sacramento area. The Development Services Department plans and implements the policies of the City Council for growth, development and enhancement of the City of Sacramento. The Planning Division consolidates city-wide planning, community planning; environmental and toxics review; planning, design review and preservation application processing. The Building Division reviews commercial and residential construction plans for compliance with codes and ordinances, conducts on-site inspections.

**Santa Barbara County**

Santa Barbara County government is a service-oriented organization with a \$600 million budget. The County has 23 departments and a workforce of approximately 4,600 employees in over 700 different jobs. Whatever your career interests, you can use your talents to improve the lives of the 405,000 people of diverse socioeconomic and cultural backgrounds who live in the County. Whether you prefer working outdoors, in a courtroom, in a clinic, or in a professional office environment, the County has the perfect career that's right for you. At the County you'll find variety, challenge, and job satisfaction, as well as the opportunity to work with colleagues who are dedicated to making a positive difference in their community.

**SCORE!**

Founded in 1992, SCORE! Educational Centers, Inc. ([www.escore.com](http://www.escore.com)) is a leading provider of after-school learning programs for children in grades K-10.

**SDG Architects, Inc.**

SDG Architects, Inc. is a full service Architecture and Planning firm located in Brentwood, CA (Northern California). Established in 1993 by architect Ralph D. Strauss, the firm's objectives are to fulfill the needs of our clients with effective, creative, and state-of-the-art Architectural and Planning ser-

**EwingCole**

Architects  
Engineers  
Interior Designers  
Planners

**EwingCole is a multidisciplinary design firm offering architecture, engineering, interior design, and planning services to domestic and international clients.**

With offices in Cleveland, OH; Irvine, CA; Las Vegas, NV; Philadelphia, PA; and Washington, DC, EwingCole has grown from a small firm in the early 1960's to over 300 professionals. The firm's portfolio includes a diverse collection of projects in the research and development, healthcare, corporate interiors, sports and entertainment, academic, cultural, government, and senior living practices.

We invest in understanding your business and work with you to discover and develop the ideas that best realize your goals. Why experienced professionals who anticipate the evolving future of your business lead our project teams.

Leadership, careful listening, and creative thinking are applied in our practice to encourage value-based decision-making. Why we are not afraid to ask the tough questions that challenge conventional thought and stimulate new strategies.

At EwingCole, we measure our success by the success of our clients.

We welcome interested students to please visit us at our table at the Job Fair!

Visit our website at [www.ewingcole.com](http://www.ewingcole.com).

Leadership. Ideas. Results.



**GWEN ALWAYS HAD A REAL THIRST FOR SUCCESS.**

**SOMETHING SHE DRAWS UPON AS A FINANCIAL ADVISOR.**

Across the U.S., individual investors have come to understand that comprehensive plans are the best path to financial success. Why not use this trend for your own career development?

As a member of our team, you'll be taught the financial knowledge and marketing, prospecting and selling skills you need to navigate the first steps toward managing your own practice.

E-mail your resume now to [aefacampusrecruiting@aexp.com](mailto:aefacampusrecruiting@aexp.com).

**THE PERSONAL FINANCIAL ADVISORS OF**

Equal Employment Opportunity Employer. TTY: 1-800-766-2979. American Express Financial Advisors Inc. Member NASD. American Express Company is separate from American Express Financial Advisors Inc. and is not a broker-dealer. © 2005 American Express Financial Corporation. All rights reserved.

**THE COUNTY OF SANTA BARBARA: The place to be after graduation**



**Whether you want to work outdoors, in a courtroom, a clinic, or in a professional office environment, the County has a perfect career that's right for you.**



**No experience? No Problem! The County offers many entry-level professional positions that require only a 4-year degree and the desire to work in a great location!**



**Find out more about working for the County of Santa Barbara at your Campus Career Center. You'll find a video, brochures, and lots of information about the services the County provides.**

**[www.sbcountyjobs.com](http://www.sbcountyjobs.com)**

**Visit our online employment center and start a rewarding career of Public Service in Paradise!**

**1226 Anacapa Street Santa Barbara, CA 93101 805-568-2800 FAX 805-568-2833**



**Directory**

*continued from page 18*

vices and to do so with the highest quality and greatest efficiency in the industry. Our portfolio includes the following types of projects: Feasibility and Land Planning Studies, Custom Residential, Production Residential Developments, Commercial Developments, Office/Retail, Communities/Public Recreation..

**Sherwin-Williams**  
Sherwin-Williams is a U.S. corporation that sells paint & coatings through a network of 2550 sales branches. We are a Fortune 500 corporation listed on the NYSE. Our primary customers include painting contractors, builders, property managers, homeowners and others who apply paint. The company was established in 1866 and today employs 24,000 in the USA, Canada, Mexico & So. America.

**Shimmick Construction Company, Inc.**  
Established in 1990, Shimmick Construction Company, Inc. (SCCI) a general engineering contractor based in Hayward, has rapidly succeeded in earning a reputation for excellence in heavy construction. This was achieved by following its founders, John C. Shimmick and Mike Stranberg's, simple yet effective business philosophies of, "Get work for the right price, construct high-quality projects on or ahead of schedule and complete the projects within budget," but, above all, "Make It Happen." (SCCI's company motto).

**Shlemmer & Algaze**  
Shlemmer & Algaze & Associates is an interiors and architecture firm dedicated to creating better working environments for business. With an experienced staff of designers and architects, Shlemmer & Algaze & Associates is one of the largest regional firms in Southern California.

**Southern California Edison**  
Southern California Edison (SCE) is one of the nation's largest investor-owned, regulated electric utilities, and the largest subsidiary of Edison International.

**Southern Wine and Spirits**  
Southern Wine and Spirits is the nation's largest distributor of wine and spirits with distributorship's in 12 states soon to be 19. Our being the "best" in the industry is directly related to the professionalism and dedication of our workforce, the quality of the products we represent, and the Company's commitment to excellent customer service.

**SSA Landscape Architectures Inc.**  
A growing landscape architecture and planning firm located in Santa Cruz with projects all over California and the Nation. Projects range from small residential to urban design and planning. We offer competitive salary, full benefits, 401k and more

**Steinberg Group**  
Steinberg Architects is an architectural, planning and interior design firm involved in a broad spectrum of building types including civic, religious, and educational. Steinberg Architects is nationally recognized for innovative design of residential facilities including senior, student, multi-family, single-family and custom homes.

**Stryker Endoscopy**  
Stryker Corporation, a leader in the worldwide orthopedic market, has been serving it's customers since 1941 and has achieved 20 percent profit growth for over 25 years.

Stryker Endoscopy, a division of Stryker Corporation, is located in San Jose and specializes in the design, development, and manufacture of leading-edge video, powered instruments and disposable equipment for minimally invasive surgery. Stryker Endoscopy employs talented professionals with numerous business and engineering degrees in various challenging and rewarding positions. If you are looking to make a difference in your career, this is the team to join. Come grow with the best!

**Superior Tile and Stone**  
Since 1929, Superior has dedicated itself to quality work, exceptional service and innovative solutions in the tile and stone installation business. For the past 35 years the company and its customers have benefited from a consistent management team whose expertise is unmatched in the industry.

**Target Distribution**  
Target is a pro-team culture and we really strive to empower all levels of our workforce. This is reflected in the amount of emphasis on executive training and development. As executives, we see supporting our teammates and making our work environment "fast, fun, and friendly" as two of our primary responsibilities. We're also extremely committed to community service, giving more than \$2M/week back to the community. Our Web site, target.com is a great place to go to learn more about the company's culture.

**Target Stores**  
We are an upscale discount retailer that provides quality, trend-right merchandise and everyday basics at attractive prices in clean, spacious and friendly stores. America's fourth largest retailer; 23rd on the Fortune 500 list; annual revenues over \$48 billion; more than 1,200 stores in 47 states; and Target gives back more than \$2 million a week to our communities. Visit us at: [www.target.com/careers](http://www.target.com/careers)

**Teter A&E**  
Teter A&E was established in 1979. The firm began in Visalia as a structural engineering firm and has expanded to provide architectural, structural, electrical and mechanical engineering services. The firm opened an additional office in Fresno in 1996. That office has developed into the corporate office for the firm. Currently our staff is comprised of approximately sixty professionals, which include fourteen architects and ten architectural interns.

**The Design Consortium**  
The Design Consortium is a young, energetic, talented and accomplished design firm specializing in Landscape Architecture, Land Planning and Urban Design. The principal foundation of The Design Consortium is communication and service to our Clients. Our objective is to provide our Clients with a total commitment to excellence, by means of the highest degree of professionalism.

**UCI Construction, Inc.**  
UCI Construction, Inc., is a full service general engineering contractor to numerous markets including food processing, petrochemical, manufacturing and energy. The main branches of the company are located in the Bay Area and Bakersfield, from which projects all over California are managed. UCI Construction, Inc. is a Merit system contractor which strives for continued growth while

exceeding customer expectations and keeping safety a top priority.

**United Defense**

United Defense (NYSE:UDI) is a leader in design, development and production of combat vehicles, artillery, naval guns, missile launchers and precision munitions used by the U.S. Department of Defense and allies worldwide.

**USS POSCO Industries**  
World-class steel manufacturer located in Pittsburg. USS-POSCO Industries was founded in 1910. We are now a joint venture established in 1986-United States Steel and Pohang Iron and Steel of South Korea. One of the most modern steel facilities in the world.

**vanderToolen Associates**  
Landscape Architecture firm with two established office specializing in model homes, multi housing communities and commercial design. Vanir Construction Management, Inc. (Vanir) is one of the nation's leading program/project/construction management firms.

**Visa**  
Visa is the world's leading payment brand and the largest payment system, enabling banks to provide their customers with a wide variety of payment alternatives. Nearly 21,000 financial institutions worldwide rely on Visa's processing system, VisaNet, to facilitate 2.5 trillion in annual transaction volume with virtually 100-percent reliability.

**Walgreens**  
Walgreens, the nation's premier retail drugstore, has opportunities nationwide. With 7,000 stores planned by the year 2010, we're creating opportunities for talented, ambitious individuals to be ready to contribute to future success.

**Walsh Engineers**  
Walsh Engineers is a San Diego based Mechanical Consulting Engineering firm which specializes in HVAC, Plumbing, Process Piping and Cogeneration plant design for large commercial clients. Check out our website at [www.walshengineers.com](http://www.walshengineers.com).

Warner Group Architects, Inc.  
see Directory, page 20

**Jensen Corporation Landscape Contractors**

CUSTOM ESTATES • MAINTENANCE • COMMERCIAL • SPORTS TURF

**BUILD YOUR CAREER**  
WITH A NATIONAL AWARD WINNING LANDSCAPE COMPANY

Jensen Corporation Landscape Contractors services the Bay Area from Gilroy to Napa Valley. We are located in Cupertino, California with offices in Napa, Belmont, Palo Alto, Redwood City and San Jose.

Our services include large commercial installation, commercial landscape maintenance, residential estate installation and maintenance, water management, irrigation, sports turf, integrated pest management and design build.

**WE HAVE IMMEDIATE JOB OPENINGS FOR:**

- ♦ Landscape Supervisors
- ♦ Water Management
- ♦ Senior Foremen
- ♦ Landscape Construction

We offer a competitive salary with excellent benefits including medical, dental, ESOP and 401K. Contact: Human Resources: [hr@jensencorp.com](mailto:hr@jensencorp.com) or fax resume to 408/255-4981. For more company information go to [www.jensencorp.com](http://www.jensencorp.com).

Please visit us at the job Fair on Thursday May 12th!! We hope to see you there.

**MACKAY & SOMPS CIVIL ENGINEERS, INC.**

*Since 1953*

**Development Consultants, Civil Engineers, Planners and Land Surveyors**

Serving the land development and home building community

*We are looking forward to talking with Planners, Designers, and Civil Engineers at the Career Fair on Friday, May 13th!*

Offices throughout Northern California

*Pleasanton • Sacramento • San Ramon • Roseville*

[www.msce.com](http://www.msce.com)



**Directory**

*continued from page 19*

The Warner Group Architects, Inc. is a leading high-end residential architecture firm with numerous awards and publications. We have appeared in prestigious publications internationally and in Architectural Digest twenty times, including three cover stories and three inclusions in the AD 100, a list of the top 100 architecture and design

firms in the world.

**WD Partners**

WD Partners is a multi-unit design and development company. Our uniquely integrated approach streamlines store development, and continues to set a new standard for companies looking for innovative ways to improve their efficiency, profitability, and geographic reach.

**Wells Fargo & Company**

Wells Fargo & Company (NYSE:WFC) is a diversified finan-

cial services company - providing banking, insurance, investments, mortgages and consumer finance from more than 5,900 stores, the internet (wellsfargo.com) and other distribution channels across North America.

**Wenell Mattheis Bowe**

Wenell Mattheis Bowe is a diversified firm providing architecture, interior design and planning services to public, institutional and commercial clients in Northern

California.

**William Hezmalhalch Architects, Inc.**

Established in 1981, William Hezmalhalch Architects, Inc. (WHA) specializes in the shaping of new distinguished communities, and the reshaping of existing urban districts and downtown neighborhoods.

**Wimberly Allison Tong & Goo**

Wimberly Allison Tong & Goo (WATG), is a global Architecture and Design firm, specializing in hospitality and leisure architecture including resorts and urban hotels, theme parks, conference centers, entertainment facilities and residen-

tial properties.


**Wm. Wrigley Jr. Company**

We're the Wm. Wrigley Jr. Company, the World's leading manufacturer and marketer of confectionary products. Wrigley's brands of chewing gum have been a refreshing part of everyday life for more than 100 years.

**Yahoo!**

When Yahoo! was founded in 1994 by Stanford Ph.D. students, David Filo and Jerry Yang, it began as their hobby and has evolved into a global brand that has changed the way people communicate with each other, find and access information, and make purchases.

Corporate Opportunities



**Grow with the Panda.**

Bring your passion for excellence to our national support center team.

Yummy food. Hot jobs. Call us.

Email: [corpjobs@pandarg.com](mailto:corpjobs@pandarg.com)  
[www.pandarg.com](http://www.pandarg.com)

1833 Walnut Grove Ave., Rosemead, CA 91770 Tel: (626) 295-9888

**Join an exciting and growing company committed to employee's development**

**...a company that trains and empowers its employees to grow!**

With our firm dedication to providing high quality Chinese cuisine at an affordable price, Panda Restaurant Group, Inc. (PRG) has become the largest Chinese food service provider in the nation and the third largest minority-owned firm in Los Angeles County. For 30 years, we have delighted our guests with attentive service, convenience and the finest in Asian fare.

With annual sales approaching \$725 million, a growth rate of 20%, and more than 700 restaurant locations, the privately-held Panda Restaurant Group, dramatically outperforms its competitors.

**We are now hiring for an Associate Accountant, Food Technologist, Staff Auditor, Training Coordinator and many more corporate as well as management positions.**

**Come stop by our table to learn more about these great opportunities!**

**RECYCLE TIP #642**

Use this Mustang Daily to clean your windows




**ILA ZAMMIT**  
engineering

ILA | Zammit Engineering is an award winning electrical engineering firm that specializes in architectural lighting design, electrical systems design, LEED design, and specialized systems design. Our project experience includes universities and schools, hotels and high-rises, restaurants, high-tech and communications, hospitals and medical facilities, theaters and casinos, corporate office buildings, public works and government jobs. We are currently seeking friendly and outgoing people who are quick learners to fill the entry level positions in Electrical and Lighting Design fields. Our firm will be present at the Job Fair on Thursday, May 12th and Friday, May 13th. Please bring your resumes and be prepared for an interview.

5473 Kearny Villa Rd., Suite 300, San Diego, CA 92123  
858.279.0242 858.279.0711 FAX [www.ilaz.com](http://www.ilaz.com)

City of Sacramento  
California



The City of Sacramento Development Services Department is actively seeking qualified candidates to fill the following positions:

**Senior Planner - Environmental Planning\***  
Salary: \$55,050 - \$82,574 Annual (DOE)  
FFD: 6/10/05 - Job Code #01822-05

**Associate Civil Engineers**  
Salary: \$4,702.76 - \$6,617.26 Per Month (DOE)  
Open/Continuous Filing - Job Code #11012-05

**Fire Protection Engineers**  
Salary: \$ 4,478 - 6,302 Per Month (DOE)  
FFD: 5/20/2005 - Job Code #11018-05

**Assistant Civil Engineers**  
Salary: \$3,874.64 - \$5,452.03 Per Month (DOE)  
Open/Continuous Filing - Job Code #11011-04

**Junior Engineers (Civil/Mechanical/Electrical)**  
Salary: \$3,176.61 - \$4,469.80 Per Month (DOE)  
Open/Continuous Filing - Job Code #11010-05

**Associate Planners**  
Salary: \$3,935.31 - \$5,537.34 Per Month (DOE)  
Open/Continuous Filing - Job Code #17003-05

**Assistant Planners**  
Salary: \$3,265.50 - \$4,594.89 Per Month (DOE)  
Open/Continuous Filing - Job Code #17002-05

**Junior Planners**  
Salary: \$2,955.73 - \$4,159.01 Per Month (DOE)  
FFD: 6/10/05 - Job Code #17004-05

**Building Inspectors 1/2/3**  
BI-1 Salary: \$3,275 - 4,608 Per Month (DOE)  
BI-2 Salary: \$3,439 - 4,838 Per Month (DOE)  
BI-3 Salary: \$3,610 - 5,080 Per Month (DOE)  
Open/Continuous Filing - Job Code #16011-05

**Building Technicians**  
Salary: \$2,913.30 - \$4,099.32 Per Month (DOE)  
Open/Continuous Filing - Job Code #16013-05

For applications, benefits and additional information regarding these positions, contact:  
City of Sacramento Employment Office  
921 10th Street, 1st Floor, Sacramento, CA 95814  
916-808-8568  
or visit our website at [www.cityofsacramento.org/personnel](http://www.cityofsacramento.org/personnel)



## REVIEW

## A movie worth 'Millions'

Tonya Strickland  
MUSTANG DAILY

British boys with cute accents and freckles never fail to entertain, but in director Danny Boyle's film, "Millions," the imaginative plot in which they are intertwined is also enchanting.

In Northeast England, seven-year-old Damian (Alex Etel) and his nine-year-old brother, Anthony, (Lewis Owen McGibbon) start fresh when their father, Ronnie (James Nesbitt), moves them out of their family home, where the walls echo from a once happier time and into a suburban neighborhood after the death of the boys' mum.

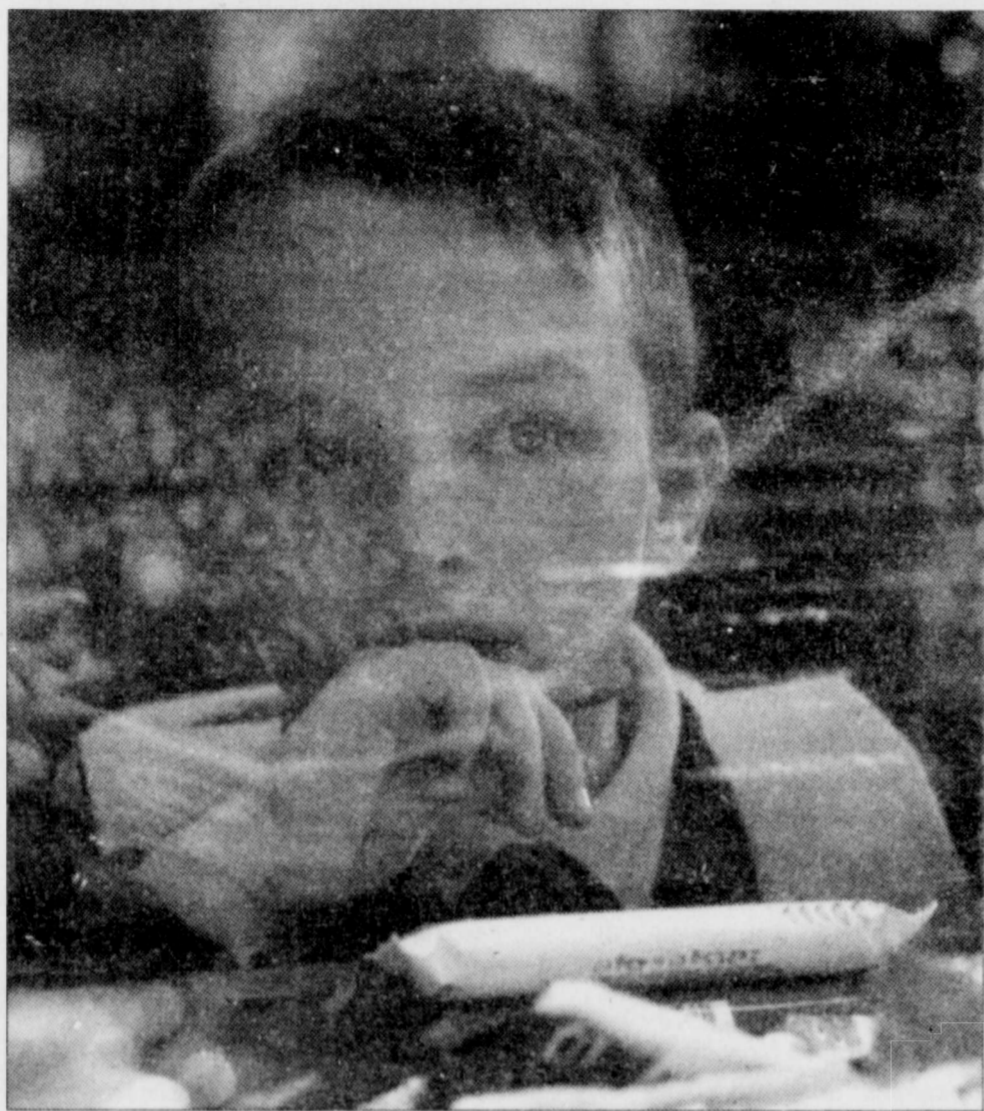
Once in the new place, Damian retreats to his thought haven, a makeshift rocketship built of cardboard boxes and packing tape.

It is here the story develops. Damian hears a rumble, peeks out the window of his ship and sees a duffel bag of cash falling from the sky.

In what could be a depressing tale of grievance, morals and greed, Damian's outlook on life and money transforms this film into a world of imaginative plots and a child's fantasy.

The rest of the film is amusing and touching. Practical Anthony sees the money as an investment to gain status among friends at school, while Damian sees it as a miracle to help the poor and drops cash into the hands, or mailboxes, of anyone he sees in need.

The two boys struggle with what to do with the money and when the adults find the loot, it is apparent that even though people may be older, they are not necessarily wiser. There is a scene in which a drunken spectacle of the



COURTESY PHOTO

Newcomer Alex Etel stars in the British heartwarmer, 'Millions.' The film revolves around two boys who find a duffel bag filled with cash.

dad and his new girlfriend, ridiculously giddy on champagne and sudden wealth, are pasting money on the wall to form paper letters spelling "Merry Christmas."

Solid acting and the adorably honest and talented performance from Etel is worth much attention. However, overly obvious advertising plugs from corporate giants, such as Coca-Cola and Nike, in addition to the slight undertones of faith and miracles, may irk some people.

Nonetheless, the advertising is a given in films these days and the spiritual references are a simple

rendering of life through Damian's eyes, a physical embodiment of his child-like honesty. Boyle illustrates this with a faint spotlight that shines upon Damian in the night as he hides the money. At times, a single star in the sky seems to guide him to the next scene.

Through the combination of Etel's infectious little boy charm and Boyle's delightful mix of fantasy and reality, even skeptical cynics should be able to leave the theater with complex thoughts, a few sniffles and an inkling to take their friends to see it again.

## COMMENTARY

## Jem is no hologram

Jem is adorable — but she has every reason not to be. The Welsh singer/songwriter (2003's "Finally Woken") worked with Madonna and some of today's top producers. She performs at major festivals and will soon be touring with the Dave Matthews Band. She hauntingly covered Paul McCartney's most gorgeous solo song, "Maybe I'm Amazed," for her role as a wedding singer on TV's teen-angst explosion "The O.C."

The petite star has the passport to be a holy rolling British brat, but she's actually quite charming with a lilting accent and an excited tendency to wave her hands in emphasis. (And she uses cool across-the-pond slang.)

The Art Beat caught up with Jem backstage at the Coachella Festival, and amid scorching heat and persistent insects, chatted with her about music, her boss (he goes by Dave) and getting elegantly wasted.

**Art Beat:** I bet you've been doing interviews all day.

**Jem:** Actually, no, I haven't because I went on earlier, and I have just an hour of press. Then I can finally get drunk. I didn't want to for the last two days — I wouldn't want a hangover here. I bet that's one of the worst things that can ever happen to you.

**AB:** And you're from Wales, which has a slightly different climate.

**Jem:** I know. So it's been amazing here. They booked me last year, but my band wasn't put together, so I thought, "I hope they won't be mad." I was so happy to see how many people were watching. It was early.

**AB:** It's funny; when you went onstage, girls and guys all went, "Ohh, she's so cute."

**Jem:** (laughs) I know, it's so funny. It's good. I get sexy guys and hot lesbians, know what I mean?

**AB:** You can't go wrong. So tell me how you got involved with music. Didn't you used to work more behind the scenes?

**Jem:** I used to run a record label ... that was an amazing experience. I also used to run production on festivals in the U.K. — and it's really weird because once you've done that, you're so aware of what's going on, just in production. It's everything but the music — like the stage is falling down, or there's press and hospitality. I loved it. It's not like paying your dues, but I really know so many different jobs because I did them all.

**AB:** Is (Coachella) run efficiently?

**Jem:** I think this one is run very well. People are nice. Also, it's funny, because with the weather, it's all quite posh. There's a beautiful polo field, whereas in the U.K., it always rains, and you'll always have some dirt. Everything gets so dirty. But it's so nice here; I can't wait 'til the Prodigy. I haven't seen them since I was 15.

(temporary derailment as we squeal loudly over The Prodigy)

So that's what today is for — relaxing, listening to music and getting drunk.

**AB:** For the readers not so familiar with you, how would you describe your music and your influences?

**Jem:** Well, my influences are wide. Someone told me I should call it "Welsh eclectic."

**AB:** And that means ... what?

**Jem:** Nothing. Really, the album is representative of a lot — soul, hip-hop, reggae, classical, rock, love ballads. Basically, I listened to all of that and then I threw it all in a mixing bowl, with samples and bits. I wanted to make an album where people could be in the car, cleaning the house or wanting to go party, and they could sing along to it. That's what I like in music.

**AB:** My friend and I listened to you in the car as we drove down here. Seriously.

**Jem:** Wicked. It's weird; it's a difficult approach because if you don't get it quite right, then there's no edge. I think because I had a hip-hop and dance background, I worked that in. I'm really pleased with it.

**AB:** You mentioned "The O.C." during your set, calling it a guilty pleasure. How was your experience on that show?

**Jem:** They were really good to me. It was nothing I ever thought I'd do — TV, singing in a show, let alone playing a wedding singer. It was a great experience.

**AB:** Would you want to do something like that again, try a different medium?

**Jem:** Maybe — before I did my videos, I always wanted to try more. I quite like writing, stuff like that. For acting ... I might have a bug. I always feel like that's not something you ever want to say, but we'll see. The important thing for me is the music.

**AB:** What's coming up for you in the near future?

**Jem:** This summer, things are going to be a bit crazy. We do the Glastonbury Festival and then Australia, Europe ... then dates with Dave Matthews.

**AB:** Right, you're on his record label (ATO Records).

**Jem:** Yeah, and they've been great to us. We've got the Sasquatch Festival, a huge festival with the Pixies in Seattle. Then I do an American tour for two months and then it's October. Maybe then I'll get to sleep for a day. But it's going so well now, you just have to do it while it's available. No rest for the wicked.

Stacey Anderson is a journalism and music junior, KCPR DJ and sparkling diamond. (Maybe.) Catch her Sundays from 6 to 7 p.m. and Thursdays from 10 a.m. to noon on 91.3 FM or e-mail her at [standers@calpoly.edu](mailto:standers@calpoly.edu).



the  
**ART**  
beat

film, art, music and everything in between

**LOW TO NO COST BIRTH CONTROL**  
STI screening and treatment  
Pap and cancer screening  
Minor urgent care  
Free birth control pills  
Free Condoms  
Emergency Contraception

**HealthWorks**  
Affordable. Confidential. Caring.  
San Luis Obispo at University Square  
[www.healthworksc.com](http://www.healthworksc.com) phone: 542-0900

**MONTAG**  
Indie Electronic, for fans of Hood and M83  
[www.montag.ca](http://www.montag.ca)  
(from Montreal)  
[www.carparkrecords.com](http://www.carparkrecords.com)

KCPR 91.3 fm presents

hip hop/ electronic, for fans of DJ SHADOW and RJD2

**DAEDELUS**  
**Daedelus**  
[www.daedelusdarling.com](http://www.daedelusdarling.com)

**Carousel**  
experimental electronic

@ the Dwelling 1060 osos st 8:00 pm  
wednesday MAY 11th [www.KCPR.org](http://www.KCPR.org)  
tickets at doors

**MISSION GRILL**  
STEAKS • SEAFOOD • BISTROT PRIME RIB

**Happy Hour**  
every day  
2:30 PM - 6 PM

**Champagne & Oysters**  
cocktail night  
WEDNESDAY AND SUNDAY • 6 PM - 9 PM

**Jazz Brunch**  
every Sunday  
9 AM - 3 PM

**Live DJs**  
TUESDAY - SATURDAY • 10 PM - 2 AM

**Turn Table Tuesdays**  
with HOLLA BACK ENTERTAINMENT

**80's Night Wednesdays**

[www.missiongrill.com](http://www.missiongrill.com)  
805.547.5544  
1023 Chorro Street, SLO



# Abortion should be 'rare, safe and legal'

We've seen their bumper stickers that read, "Abortion is the ultimate sin." We've seen their "funerals" for these "murdered babies." It's the "anti-choice" or "pro-life" movement at its worst. But have you ever taken the time to talk to these people?

Well, I almost did.

A great adventure in San Luis Obispo is to visit the Planned Parenthood. You don't even need to go inside because the protesters outside offers great entertainment. Not too long ago when I strolled by the Planned Parenthood, a "horizontally challenged" woman approached me and asked, "How can you be complacent when they're killing babies inside?" She acted like there was a doctor inside "slicing and dicing" away at one of those cute babies in the diaper commercials.

Not knowing how to respond, I decided to humor myself and hopefully offend her. I thought about asking her if she had a day job, or if she got paid to sit outside and protest. Maybe she could offer me a job, who knows? After 30 seconds of silence, I quoted something I once heard in a stand-up by comedian Bill Maher: "You know what, I'm pro-abortion," I forcefully said to the woman. "And it's not just that," I continued, "but I'm pro-suicide, pro-assisted suicide and pro-death penalty. Anything that gets the freeway moving, I'm for!"

That would be the first time a protester would call me "crazy" and stop talking to me. So if you ever find yourself caught in an argument with these anti-choice people, remember Maher's quote. It's like a "get-out-of-jail-free card."

On a more serious note, abortion is a "non-issue" on which many social conservatives concentrate huge amounts of resources, money and time. Just imagine if they spent that time fighting world poverty or protesting the current genocide in Darfur? But of course they wouldn't do that. They must focus their energy on not just opposing abortion, but promoting abstinence-only education, preventing people from receiving condoms and opposing all forms of birth control. If you're against abortion, wouldn't it make sense to at least promote the use of birth control?

If our goal is to limit and decrease the amount of abortions that take place, the "pro-life" movement should be actively involved in condom distribution. They should also be educating people on other birth control options like "the pill," "the patch" and "the morning after pill."

People who are against abortion need to ask themselves, "What would Jesus do?" I'm pretty sure he would be passing out all forms of birth control in order to limit the number of abortions taking place.

This issue should not be about ideology, but just plain common sense. If you believe abortion is against your religion, that's completely fine, as long as you don't try to prevent someone else from obtaining one. Because, like the gay marriage issue, religions differ on views about abortion. For instance, many Christians oppose abortion even if the mother's life is at stake. On the other hand, Judaism "mandates" an abortion in order to save the life of the mother. This leaves us with our governmental laws which can neither "advance nor inhibit religion."

Overall, when it comes to abortion, I think most people would agree with former President Bill Clinton when he said it should always be "safe, rare and legal."

*Josh Kob is a political science senior and Mustang Daily columnist.*

## COMING TOMORROW

Campus Troubleshooter with Mustang Daily columnist Carrie McGourty



from **LEFT field**  
political viewpoint

## LETTERS TO THE EDITOR

### Journalists should be honest messengers, not misleaders

There is one simple tenet journalists are taught upon entrance into their major: Journalism is the communication of truth. But this ideal is clearly problematic. As we saw in the interaction of the Mustang Daily's coverage of the ASI elections and referenda, truth became a serious commodity.

As a journalism sophomore, I am appalled at the coverage of this election. As a current and reelected ASI College of Liberal Arts Board of Director, I ask you, Mustang Daily, why haven't you been to the board meetings all year? Why did you only attend the meeting prior to the election? Was that the only meeting worth your time?

If you truly wanted the full breadth of the story on the referenda and the elections for your readers, you should have attended the board meetings and board workshops each quarter. They are not weekly; you could have made the time.

Don't let me inconvenience the staff schedule, making the ASI news coverage more complicated than it should have been. Report only on what you want your readers to read. Don't inform them about what the ASI truly is. Don't interview the board candidates to see if they truly understand what they are running for. Pick the people with the message you like and run it.

Or maybe do what you are taught every day in the major. Be the messenger, the communicator of truth — not the misleader.

**Colin Rizzo**  
Journalism sophomore

### Triple fines are discrimination against Cal Poly students

Urination in public: \$350.  
And that's for the first offense.

## MUSTANG DAILY CORRECTIONS

The Mustang Daily staff takes pride in publishing a daily newspaper for the Cal Poly campus and the neighboring community. We appreciate your readership and are thankful for your careful reading. Please send your correction suggestions to editor@mustangdaily.net.

Now I am no lawyer, but I know that the recent permanent triple fines are a blatant student discrimination. Noise complaints, minor in possession and drunk in public are obviously associated with students, and now we have to worry about these obscene fines.

Thanks a lot San Luis Obispo. Don't mention how this college keeps the town on the map. There is no doubt in my mind that the police department is anti-student. What else would you call this fine increase? I was under the impression it was a temporary thing with Mardi Gras, but I guess it is this town's way of showing its appreciation for the calm and low-key Mardi Gras weekend.

Apparently, the City Council used Santa Barbara's UIP fine as an example of how triple increase is reasonable. They pay \$134. We will be paying more than double that. Now maybe my math is wrong, but it seems like that would serve to show our increase is ludicrous.

Come on Cal Poly. Are we going to let this small town slowly chip away at our freedom to be students?

**James Shimamoto**  
General engineering sophomore

### ASI posters mocking the election are quite amusing

Within the clutter of the ASI vote-for-me flyers, I happened to come across a few that were a little different. The best one proclaimed "Vote this Pole for ASI President because nobody really cares." This is great that someone is mocking these ASI elections.

Unlike presidential elections where each candidate is thoroughly joked and jeered at this person didn't pick on one candidate but summed up the ASI candidates (represented by the Pole) and said what a lot of us were probably thinking: The only people who care about ASI elections are the people that are running for the positions.

I'm going to say that that statement holds water, and will be proven when the statistics of how many Cal Poly students actually voted is published.

I'll be eager to see what, if any-

thing is accomplished with those \$10 million that ASI is chillin' on. In future elections I would like to see more of these humorous and ridiculing posters plastered around campus.

They get people thinking. Do you really care who gets voted into the position of ASI president?

**Matt Tarlecki**  
Civil engineering sophomore

### Bikes save money; campus should be bicycle-friendly

Recently, Cal Poly has further promoted bicycle use across campus. With the rising parking problems, bicycles are a great way to get to class. New bike racks have been distributed all over campus to increase ease of use. They are a wonderful method of transportation for a college student.

But what about the signs posted across campus: "Bicycle Walk Zone." Nearly every bit of the campus core is labeled a no-bicycle zone. Perimeter Road and Via Carta are the only accessible ways through campus. Recently, I was removed from my bicycle on South Polyview Drive near Fisher Science. Do you know how severe of a fine UPD gives a bicyclist? A heinous \$120. I was let off with my first and last warning.

If a gigantic campus dining truck or maintenance vehicle is allowed on these streets, why aren't bicycles? It is excruciatingly annoying being forced to walk a bike down a hill. Look at UC Davis and other bicycle-friendly campuses. Cycling is a very efficient means of university travel, though I can see where complaints may arise. I have witnessed many cyclists tear through crowds without a bit of consideration for others. But of Polyview drive, it would take minimal effort to separate pedestrians from bicyclists.

Why not apply them through the horseshoe nightmare of Polyview Drive? Students don't want another reason to hate UPD. Given crap like this, what other option do we have?

**Rudy Zacher**  
General engineering sophomore

## LETTER POLICY

Send us your love, hate and more

Mustang Daily reserves the right to edit letters for grammar, profanities and length. Letters, commentaries and cartoons do not represent the views of the Mustang Daily. Please limit length to 250

words. Letters should include the writer's full name, phone number, major and class standing. Letters must come from a Cal Poly e-mail account. Do not send letters as an attachment. Please send the text in the body of the e-mail.

**By e-mail:**  
opinion@mustangdaily.net

**By mail:**  
Letters to the Editor  
Building 26, Room 226  
Cal Poly, SLO, CA 93407

# MUSTANG DAILY

Graphic Arts Building, Suite 226  
California Polytechnic State University  
San Luis Obispo, CA 93407

(805) 756-1796 editorial  
(805) 756-1143 advertising  
(805) 756-6784 fax  
mustangdaily@calpoly.edu e-mail

"We're all squeals and hugs — like pigs."

May 11, 2005  
Volume LXVII, No. 116  
©2005 Mustang Daily

printed by University Graphics Systems

editor in chief Emily Wong  
managing editor Allison Terry  
news editor Micah Paulson  
sports editor Dan Watson  
assistant sports editor Graham Womack  
arts&culture Devin Kingdon  
wire editor Ashlee Bodenhamer  
design editor Katie Zealar  
special sections editor Rachel Musquiz  
photo editor Matt Wechter  
assistant photo editor Sheila Sobchik  
photographers Kiel Carreau,  
Nick Hoover, Tom Sanders  
head copy editor Kim Thomson  
copy editor Justin Fivella

production manager Allison Jantos  
production assistant Eric Battiato  
advertising manager Carrie McGourty  
assistant ad manager Taiga Young  
classified ad manager Jackie Chan  
national ad manager Andrea Bittick  
ad designers Jacob Zukerman,  
Christina Gray, Tiffany Mine,  
Alan Navarro, Jessica Greenwalt  
advertising representatives Daryl Wiser,  
Lucy Bouweraerts, Andrea Ausilio,  
Nadia Lee, Kevin Blanquies, Phing Yam,  
Chelsea Rustrum, Jamie Ransom  
faculty adviser George Ramos  
business manager Paul Bittick



## Qualify

continued from page 16

holds leading marks in the triple jump, the high jump, the hurdles and the 800.

On the men's side, the Mustangs have the leading mark in the 100, the steeplechase, the 5,000 and the pole vault.

"I can't say that one event is our strongest event," Wagner said. "But any time we lead the conference, we're really pleased with that."

In preparation for the meet, the track team has tapered off its workouts and weight training. The team has also been advised by coaches to eat well in the days leading up to the meet.

"We kind of rest our bodies

right before we go into the bigger competitions," sophomore pole-vaulter Adrian Ruark said. This will be Ruark's first time competing in the Big West Championships.

Members usually also have routines they do the night before of the day of to prepare themselves mentally and physically.

"We try and head over to the track if we can and I'll do some mental stuff," Ruark said. "I'll stand on the runway and do some run-throughs without a pole and just think about what I need to do."

friday  
FLASHBACK

## Baseball

continued from page 16

better than ones in years past, with the Mustangs hitting .301 as a team, winning 21 of their past 28 games, sweeping four teams in this time and in contention for a national playoff spot.

The Mustangs also played No. 1 Fullerton close last weekend. The Titans won the Friday and Sunday contests with identical 3-1 scores, although Garrett Olson pitched a one-hitter over the final seven innings in the opener. The

Mustangs won Saturday's game 7-1, behind Jimmy Shull's five-hitter and Brandon Roberts' four RBIs.

Shull has since been named Big West Pitcher of the Week.

The Mustang pitching rotation for the series will be Olson (10-3, 2.64 ERA) Friday, Shull (7-5, 4.50 ERA) Saturday and sophomore right-hander Gary Daley (5-1, 4.71 ERA) on Sunday. The Mustang closer is senior right-hander Mike Bille (1-1, 3.48 ERA, 11 saves).

Mustang starters this weekend will be Bret Berglund (.277) at

first, Brent Walker (.303) at second, Drew Gillmore (.230) at shortstop, Josh Lansford (.289) at third, Matt Cooper (.309) in left field, Brandon Roberts (.345) in center, Jimmy Van Ostrand (.381) in right, Kyle Blumenthal (.396) behind the plate and JJ Owen (.344) as designated hitter.

Cal Poly is currently in the midst of playing 20 of 31 games at home. Next week the Mustangs return to Baggett for their final home series of the season, hosting UC Riverside for a three-game conference series.

## The New York Times Crossword

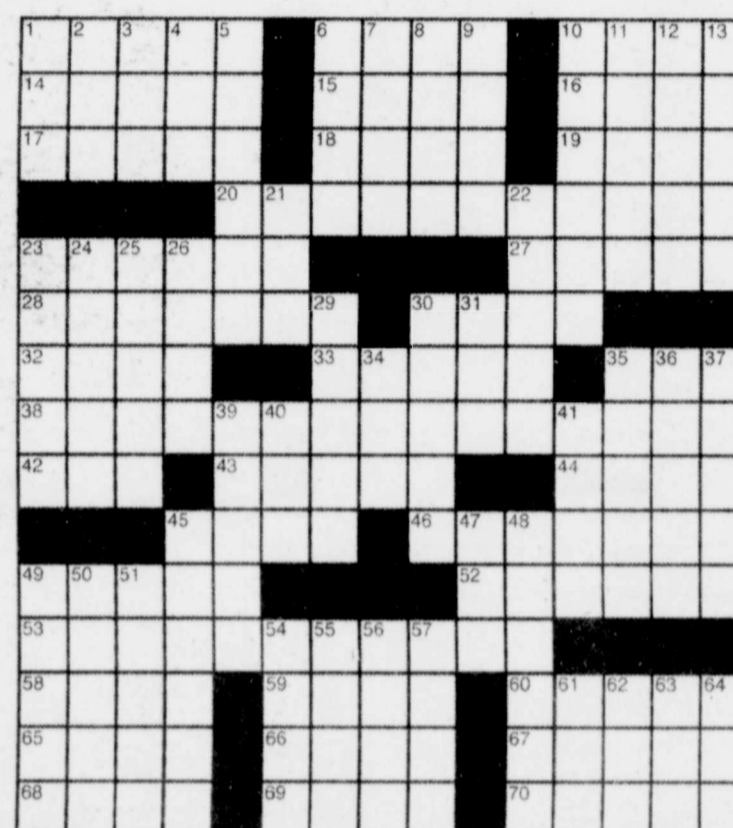
Edited by Will Shortz

No. 0330

- ACROSS**
- 1 Cousin of a cockatoo  
6 Read on the run  
10 Lip  
14 Sultanate citizen  
15 Shower square  
16 Fall preceder  
17 Informal head cover  
18 Housing \_\_\_\_  
19 First name in architecture  
20 One who gets a piece of the pie?  
23 Kind of sauce  
27 Religious commemoration  
28 Fearful  
30 Baltimore partner  
32 Ticked off
- 33 Allude  
35 Copy  
38 Borderline logic?  
42 Ring site  
43 Cockamamie  
44 Roll  
45 Sing the praises of  
46 Kind of ring  
49 Bee-related  
52 Ally in movies  
53 "Stay away from the swamp grass?"  
58 Poe product  
59 Bridge  
60 It may be well-taken  
65 Pastry chef's aide  
66 2003 A.L. M.V.P., familiarly
- 67 Displaced person  
68 Some M & M's  
69 Bank (on)  
70 Durable fabric

### DOWN

- 1 In style  
2 Start of a Latin conjugation  
3 Elevator part  
4 Baptist leader?  
5 Passamaquoddy home  
6 Formal accessory  
7 Double checker  
8 Rival of Bjorn  
9 Parcel  
10 Sound setup  
11 Final Four site  
12 Horse fathers  
13 Wear  
21 Poetic conjunction  
22 Combusted  
23 Try a tidbit  
24 Luau greeting  
25 Not so common  
26 Palm, e.g.  
29 Huge worry  
30 Did in  
31 Part of H.M.S.  
34 Many millennia  
35 To the left or right



Puzzle by Richard Silvestri

- 36 Put forward  
37 Diary note  
39 "Cheers" role  
40 Savanna sight  
41 Tissue additive  
45 Some brews  
47 Key abbr.  
48 Masticated
- 49 Moving  
50 Sign of the 1960's  
51 Sat around  
54 Open a bit  
55 Scale start  
56 Old fiddle
- 57 Dr. Jones, to friends  
61 Fire truck accessory  
62 Canterbury can  
63 Elm City collegian  
64 "Stand" band, 1989

For answers, call 1-900-285-5656, \$1.20 a minute; or, with a credit card, 1-800-814-5554.

Annual subscriptions are available for the best of Sunday crosswords from the last 50 years: 1-888-7-ACROSS.

Online subscriptions: Today's puzzle and more than 2,000 past puzzles, nytimes.com/crosswords (\$34.95 a year).

Share tips: nytimes.com/puzzleforum. Crosswords for young solvers: nytimes.com/learning/xwords.

## Three Good Reasons to Register for HISTORY this Summer:

### First Five Weeks:

- HIST 207, Freedom and Equality in American History**  
GE D1 and USCP  
#10904 MTWR 9:10-11:00 AM
- HIST 310, East Asian Culture and Civilization**  
GE D5 (Non-Western elective for History majors)  
#10581 MTWR 9:10-11:00 AM  
#10582 MTWR 12:10-2:00 PM

### Second Five Weeks:

- HIST 214, Political Economy of Latin America and the Middle East**  
GE D2  
#10583 MTWR 12:10-2:00 PM

### ANSWER TO PREVIOUS PUZZLE

GAPED WATTS HON  
ABACI IDAHO APE  
SELLSOLDIER VEX  
ANDES DECENT  
RELIED BASEHIT  
HAIRY BRA PLATO  
ERGS FOOTHOLD  
ASH POTSHOT DNA  
TOUGHIES COUP  
SPLAT END GECKO  
TRISTAR BONKED  
RETTON AGENT  
OFT SITSATURDAY  
DEE EMITS TAUPE  
ERR AESOP SLOTS

# CLASSIFIED

### HELP WANTED

**Dancers wanted**  
\$100+ per hr, no exp. necessary,  
18+, male/female. Call toll free  
1-866-401-9009  
Heatwave Entertainment

Help wanted for irrigation work on  
Paso Robles Orchard  
Approx. 18 hrs/week  
(877) 576-8424  
Please call Steve

Kids Camp Counselors

City Morro Bay; P/t 20-40 hr/wk;  
\$7.14-9.40/hr; supervise kids  
in day camp setting & assist in  
prep of activities & field trips.  
Deadline: 5/27/05. Apply  
City Morro Bay, 595 Harbor,  
772-6207

LA Area Summer Camps  
www.daycampjobs.com/slo

### HELP WANTED

Day Camps Seek Summer Staff.  
San Fernando and Conejo Valley  
\$2800+ (888) 784-CAMP  
www.workatcamp.com/slo

### Jobs

**Rec Sports is hiring for the following leadership positions.**  
Graduate Assistant-HR  
Student Manager-Front line  
Student Manager-Exercise Room  
Student Manager-Event Mngmt.  
Student Manager-Public relations,  
marketing, and outreach.  
**Job descriptions for these and many other positions available online at**  
<http://www.asi.calpoly.edu/HR/>

**Horseriding Instructor teaching children and adults starting immediately and through summer**  
**\$8-10/hr and 10-30 hr/week**  
call: 235-3834

### HELP WANTED

**FUN - SUMMER CAMP JOBS**  
www.daycampjobs.com/slo

Sports Camp Counselors  
Day camps in Palo Alto, CA  
4 or 8 week positions  
www.DecathlonSportsClub.com

### HOMES FOR SALE

Free list of all houses and condos for sale in SLO. Call Nelson Real Estate 546-1990 or email [steve@slohomes.com](mailto:steve@slohomes.com)

Active list of houses & condos for sale. 20 years experience.  
Marguerite 440-2417 or  
[mmaxwell@calpoly.edu](mailto:mmaxwell@calpoly.edu)

2 bed, 1 bath condo perfect for students and close to downtown.  
\$348,000 709-9092

### RENTAL HOUSING

SLO Now leasing for fall  
2br, 2 bath, furnished. One block to Poly. Cable, HBO, Hi-spd internet included.  
\$1400-1460  
748-0760

Your Off Campus Housing Center-  
Farrel Smyth Real Estate and Property Management.  
For rental information call:  
543-2636  
Online rental list at  
[www.farrellsmyth.com](http://www.farrellsmyth.com)  
For information and a list of homes and condos for sale call:  
543-2172

### ANNOUNCEMENTS

AA Meetings are back!  
Wed. 3:30-4:30pm. Health Center  
Bldg. 27 Room 153-Medical  
Library

### FOR SALE

Leer 100/r Campershell Fits  
'01 Chevy Shortbed White \$700  
OBO 541-5345

### LOST AND FOUND

**REWARD-**  
For finding stolen laptop  
Sony Vaio  
Contact Danielle: (909) 633-4148

Missing a CD/mp3 player and Victor CD. Lost at the Rec Center since 4/22. If found please return to the disability resource center bldg. 124

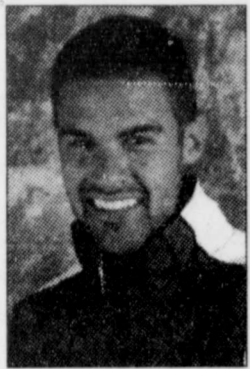
Missing San Disk USB Key on either 4/26 or 4/27.  
If found please email me at [lmitchel@calpoly.edu](mailto:lmitchel@calpoly.edu). It contains all my pictures and class projects.

GET YOUR CLASSIFIED AD IN THE DAILY NOW!! 756-1143



## THE ATHLETE'S TURN

This week's spotlight on ...



Track and field's Ryan Moorcroft

Rebecca Laman  
MUSTANG DAILY

Ryan Moorcroft is closing in on the finish of his Cal Poly career.

Certainly, his career has been distinguished, with the 1500-meter victory, run in 3:45 at last year's Big West Championships. Now, with June commencement pending for the graphic communications senior, Moorcroft says his biggest focus, aside from track, is preparing for graduation and maintaining his social life.

**Q.** — How did you first get involved in track and field?

**A.** — This is actually a funny story. I was originally a basketball player in high school and at our school, there was a turkey trot which was a 1.5 mile run. I went out and ran it and afterward the coach came up to me and told me I ran it in 10:45 and that I should run track. I just knew I loved it from then on. I liked the politics of it and the variety of events that are involved and that everyone got to participate no matter what their strengths are.

**Q.** — What's been your biggest challenge so far this season?

**A.** — Trying to graduate and getting everything lined up with school. On the track side — staying injury free. I've had little nicks here and there, so just focusing on just staying healthy has been the biggest challenge for me along with preparing to graduate.

**Q.** — What do you typically do in preparation for a competition?

**A.** — I have a warmup routine where I warm up an easy two miles just to get the sweat going. I do drills to isolate different muscles in my body so they're ready. I don't typically listen to music because I find it to be too much of a distraction. I try to focus on what the particular meet is going to be like and then mentally prepare for what the race is going to be like by picturing it mentally.

**Q.** — What do you like to do in your spare time?

**A.** — I love to do a lot of things — rest, obviously from running. I enjoy watching movies with my friends, I like to go to Avila and Pismo beach to body surf and throw a Frisbee around. I listen to music, which includes anything but country. I talk on the phone with friends and my family. I'm also a mentor for a child and I spend two to four hours every week with him.

**Q.** — Do you think it is difficult to balance your sport with school?

**A.** — Running has been a major part of my college career, so I have learned to balance my social life and school along with the amount or volume of running I do. I wish I could commit myself better to class, but it has been tough for me. It's never fun to sit in class after a hard work out when you're hot and sweaty.

## Track and field sprints for the top three

The Big West Championship begins today for Cal Poly, which had the second place men's team and third place women's squad last year.

Emily Rancer  
MUSTANG DAILY

Cal Poly's track and field team will bring 44 of its members to compete in the Big West Championship Friday and Saturday at UC Irvine with hopes of earning a spot in the top three.

The men's team took second last year and finished just 12 points out of first place. The women's team finished third. CSU Northridge claimed both the men's and women's conference titles.

"I don't think we're in a position to challenge Northridge," track and field coach Terry Wagner said of this year's team. "But if we have a really good day and the other teams don't perform as well, we could be anywhere from second to fourth."

Battling Cal Poly for the top spots in the Big West will be Idaho and Utah State.

Wagner noted that while this year's team is not as deep as it has been in the past, the quality of the individuals may be enough to carry the Mustangs to the leading spots.

"We're going to have to count on the quality points as opposed to lots of bodies," Wagner said. "So we're counting on our top performers to go out and really control their event and hopefully gain us big points in first or second place."



SHEILA SOBCHIK MUSTANG DAILY

Jason Holmes in mid-jump in the long jump at the Five-Way Tournament hosted by Cal Poly.

One of those top performers is distance runner Ben Bruce, a senior who is currently ranked first in the nation in the 3,000-meter steeplechase and eighth in the 5,000.

"He's going to be one of several people that we'll count on to win big points in their own specialties," Wagner said.

As the top distance runner in the Big West, Bruce faces pressure from both his team and himself to remain No. 1, but he's trying not to let it effect his performance.

"You have to get used to that," Bruce said. "You've got to learn to put the pressure aside and trust your fitness."

Other top athletes include junior Kaylene Wagner (No. 3, high jump), sophomore Sharon Day (No. 5, high jump), senior Maggie Vessey (No. 16, 800m) and senior Cortney Stafford (No. 4, triple jump).

Of all women track and field members in the Big West, Cal Poly

see Qualify, page 15

## Men's golf makes NCAA West Regional

MUSTANG DAILY STAFF REPORT

For the first time since reinstating men's golf at Cal Poly five years ago, the Mustangs have qualified for the NCAA Regionals.

Having finished second in the Big West Championships two weeks ago, the Mustangs will compete in the West Regional at the Stanford Golf Course on May 19 to 21.

Cal Poly is seeded 19th in the West Regional, behind top seed UNLV. The Mustangs quintet of

golfers for the Regional will be led by 2005 Big West champion Travis Bertoni.

The junior and two-time Big West Golfer of the Year is averaging 70.7 shots per round and has won three tournaments this season.

Other Mustangs expected to compete are freshman J.J. Scurich, sophomore Brycen Wagner, junior Casey Strohsahl and freshman Colin Peck. The Big West will also be represented by conference

champion UC Riverside, ranked 14th and Garrett Sapp of UC Irvine, who will compete as an individual.

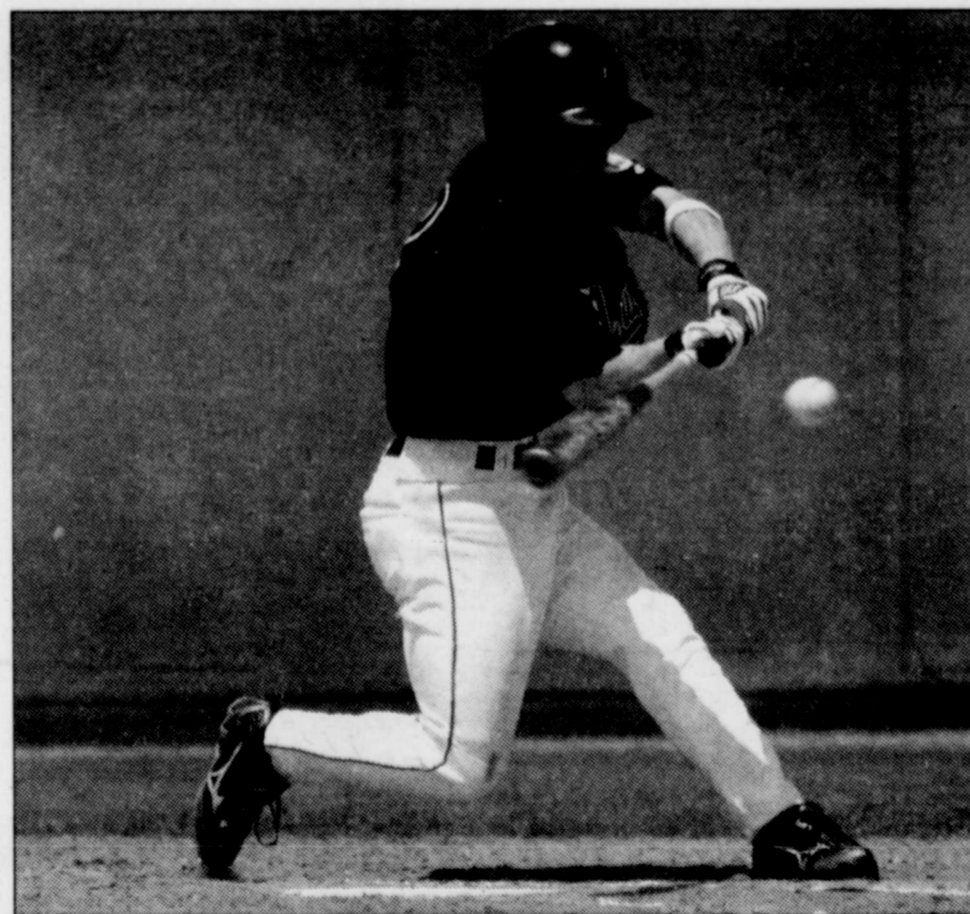
A total of 27 schools and six individual golfers have been placed in each of the three Regionals.

The East Regional will be played at the Golf Club of Tennessee in Nashville while the Central Regional is slated for the Warren Golf Course in South Bend, Ind.

Ten teams and two golfers not

on advancing teams from each regional qualify for the NCAA Division I National Championships, scheduled for June 1-4 at Caves Valley Golf Club in Owings Mills, Md. Loyola College of Maryland is the host school.

Cal won last year's national championships at Cascades Golf Course in Hot Springs, Va, overcoming an eight-stroke deficit in the final round to beat UCLA by six strokes.



NICK HOOVER MUSTANG DAILY

Taking one-of-three games from the national champion Cal State Fullerton Titans, the Mustangs moved up to No. 19 in the standings.

## Baseball continues climb

MUSTANG DAILY STAFF REPORT

Lose two out of three and move up a spot in the national rankings — that's what happens when you play the top-ranked college baseball team in the nation.

Cal Poly moved up one spot to No. 19 in the Collegiate Baseball Newspaper following its series against defending national champion Cal State Fullerton. The Mustangs won the middle game of the series, but out-hit the Titans in all three games outscoring them 9-7 overall.

Cal Poly fell a spot in another poll, to 32nd in the National College Baseball Writers Association rankings, and is 31-16 overall.

Now, the Mustangs can prepare for another big series, when they travel to face the Long Beach State

49ers this weekend. Cal Poly is in second place in the Big West Conference with a 9-3 record, and just barely ahead of the third place 49ers, who are 11-4 in conference.

The 49ers are coming off a rough last weekend as they fell twice to UC Santa Barbara last weekend before salvaging a win in the finale. However, Long Beach strikes a menacing pose next to Cal Poly in many respects.

The 49ers have a Big West-leading 2.30 ERA, are hitting .288 as a team and feature three All-Americans — shortstop Troy Tulowitzki, pitcher Cesar Ramos and closer Neil Jamison. Long Beach has also swept the Mustangs the past two years and has won 27 of the last 33 match-ups.

But this Cal Poly team could be

see Baseball, page 15