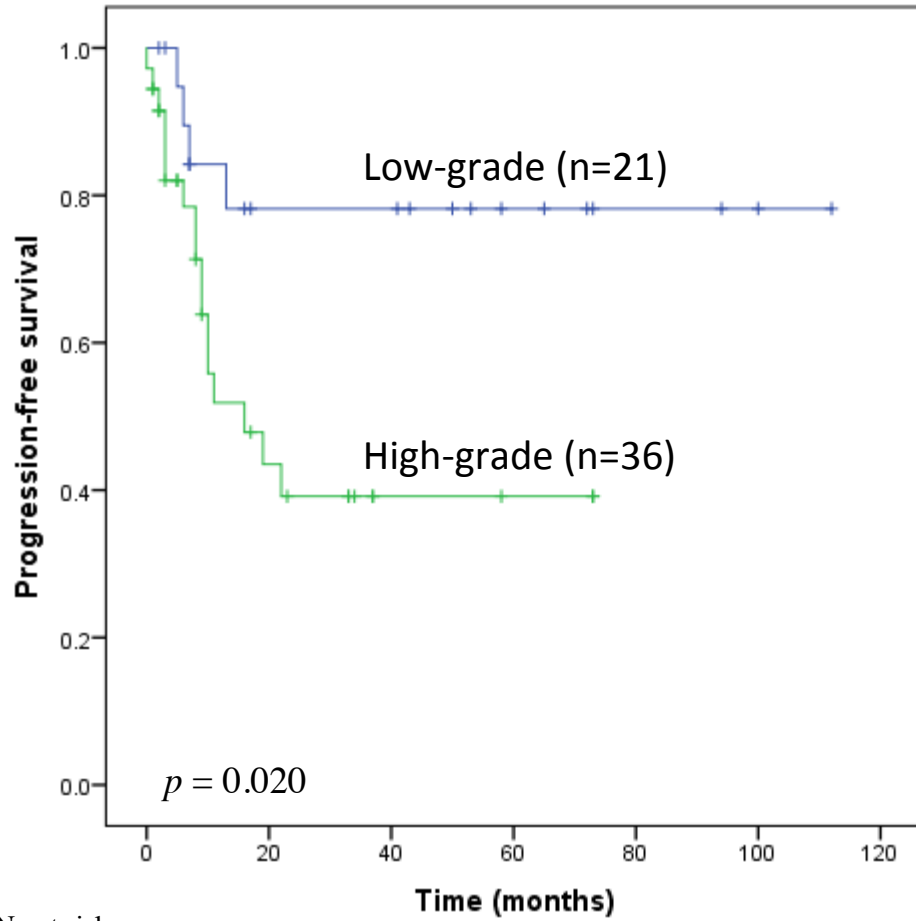
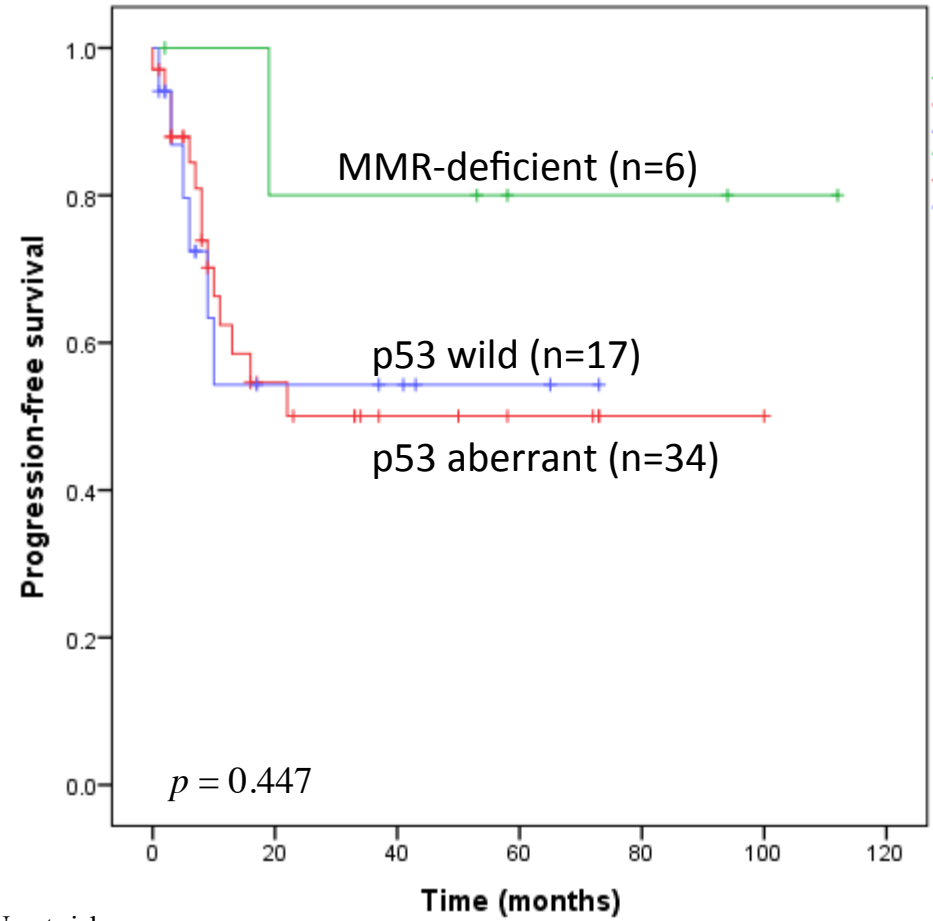


**a**

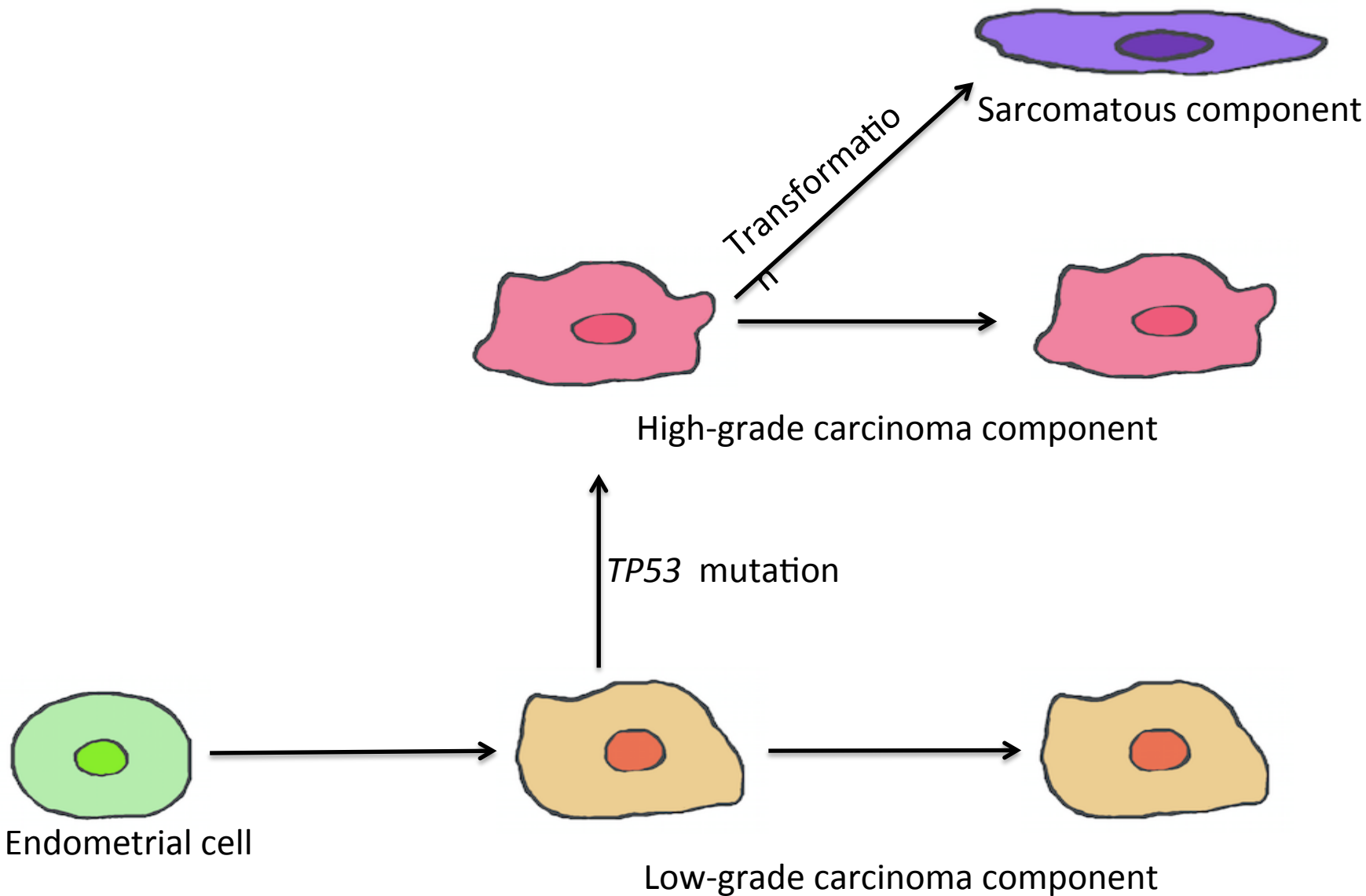
No.at risk

21	11	11	6	3	2
36	10	3	2		

**b**

No.at risk

6	4	4	2	2	1
34	12	6	4	1	
17	5	4	2		



**Table 1 Clinicopathological characters of patients of this study**

	Numbers (%) (n=57)
FIGO Stage	
IA	21 (36.8)
IB	11 (19.2)
II	6 (10.5)
IIIA	5 (8.8)
IIIB	1 (1.8)
IIIC1	1 (1.8)
IIIC2	6 (10.5)
IVB	6 (10.5)
Histology	
Epithelial component	
Endometrioid G1	16 (28.1)
Endometrioid G2	5 (8.8)
Endometrioid G3	14 (24.6)
Serous	13 (22.8)
Small cell	1 (1.8)
Undifferentiated	1 (1.8)
Mixed	7 (12.3%)
Mesenchymal component	
Homologous	25 (43.9)
Heterologous	32 (56.1)
Myometrial invasion	
≤ 1/2	35 (61.4)
> 1/2	22 (38.6)
Cervical invasion	
Absent	48 (84.2)
Present	9 (15.8)
LVSI	
Absent	33 (57.9)
Present	24 (42.1)
Peritoneal cytology	
Negative	35 (61.4)
Positive	22 (38.6)
Ovarian metastasis	
Absent	52 (91.5)
Present	5 (8.5)
Lymph node metastasis	
Absent	31 (54.3)
Present	9 (15.8)
Not evaluated	17 (29.8)
Recurrent disease	
Absent	36 (63.2)
Present	21 (36.8)
Local	18 (31.6)
Distant	6 (10.5)

Abbreviation: LVSI, lymphovascular space invasion.



**Table 2 Histological type of epithelial component and clinicopathological characters**

	<b>Low-grade (n=21)</b>	<b>High-grade (n=36)</b>	<b>p-value</b>
Age (median)	58	67	0.002*
BMI (median)	22.8	23.4	0.912
p53 expression			
aberrant (E)	9 (42.9)	27 (75)	0.023*
aberrant (M)	10 (47.6)	30 (83.3)	0.007*
MMR-deficient	5 (23.8)	1 (2.8)	0.022*
Mesenchymal component			0.565
Homologous	9 (42.9)	16 (44.4)	
Heterologous	12 (57.1)	20 (55.6)	
Stage (III/IV)	9 (42.9)	10 (27.8)	0.261
Myometrial invasion (> 1/2)	7 (33.3)	15 (41.7)	0.584
Cervical invasion (present)	4 (19.0)	5 (13.9)	0.712
LVSI (present)	7 (33.3)	17 (47.2)	0.407
Peritoneal cytology (positive)	11 (52.4)	11 (30.6)	0.158
Ovarian metastasis	3 (14.3)	3 (8.3)	0.659
Lymph node metastasis	3 (14.3)	6 (16.7)	0.564
Recurrence			
Local	4 (19.0)	14 (38.9)	0.149
Distant	1 (4.8)	5 (13.9)	0.397

Abbreviations: BMI, body mass index; LVSI, lymphovascular space invasion; MMR, mismatch repair.



**Table 3 p53 IHC of epithelial component and clinicopathological characters**

	<b>p53 wild type (%) (n=21)</b>	<b>p53 aberrant (%) (n=36)</b>	<b>p-value</b>
Age (median)	59	67	0.079
BMI (median)	22.8	23.4	0.908
Epithelial type			0.023*
Low-grade	12 (57.1)	9 (25.0)	
High-grade	9 (42.9)	27 (75.0)	
Mesenchymal component			0.784
Homologous	10 (47.6)	15(41.7)	
Heterologous	11(52.4)	21 (58.3)	
MMR-deficient	4 (19.0)	2 (5.6)	0.179
Stage (III/IV)	4 (19.0)	15 (41.7)	0.144
Myometrial invasion (> 1/2)	7 (33.3)	15 (41.7)	0.584
Cervical invasion (present)	5 (23.8)	4 (11.1)	0.266
LVSI (present)	8 (38.1)	16 (44.4)	0.782
Peritoneal cytology (positive)	7 (33.3)	15 (41.7)	0.584
Ovarian metastasis	1 (4.8)	5 (13.9)	0.397
Lymph node metastasis	2 (9.5)	7 (19.4)	0.461
Recurrence			
Local	6 (28.6)	12 (33.3)	0.775
Distant	2 (9.5)	4 (11.1)	0.851

Abbreviations: BMI, body mass index; IHC, immunohistochemistry; LVSI, lymphovascular space invasion; MMR, mismatch repair.



**Table 4 MMR IHC and clinicopathological characters**

	<b>MMR-intact (%) (n=51)</b>	<b>MMR-deficient (%) (n=6)</b>	<b>p-value</b>
Age (median)	64	57	0.204
BMI (median)	23	22.1	0.603
Epithelial type			0.022*
Low-grade	16 (31.4)	5 (83.3)	
High-grade	35 (68.6)	1 (16.7)	
Mesenchymal component			0.388
Homologous	21 (41.2)	4 (66.7)	
Heterologous	30 (58.8)	2 (33.3)	
p53 expression			
aberrant (E)	38 (74.5)	2 (33.3)	0.058
aberrant (M)	34 (66.7)	2 (33.3)	0.179
Stage (III/IV)	16 (31.4)	3 (50.0)	0.389
Myometrial invasion (> 1/2)	18 (35.3)	4 (66.7)	0.192
Cervical invasion (present)	8 (15.7)	1 (16.7)	0.662
LVSI (present)	21 (41.2)	3 (50.0)	0.689
Peritoneal cytology (positive)	20 (39.2)	2 (33.3)	0.575
Ovarian metastasis	5 (9.8)	1 (16.7)	0.504
Lymph node metastasis	7 (13.7)	2 (33.3)	0.237
Recurrence			
Local	18 (35.3)	0 (0)	0.162
Distant	5 (9.8)	1 (16.7)	0.504

Abbreviations: BMI, body mass index; IHC, immunohistochemistry; LVSI, lymphovascular space invasion; MMR, mismatch repair.



**Table 5. Prognostic factors for progression-free survival with endometrial carcinosarcoma selected by Cox's univariate analysis**

	<b>Hazard ratio</b>	<b>95% CI</b>	<b><i>p</i>-value</b>
Age ( $\geq 75$ year)	1.794	0.695-4.628	0.227
Epithelial component (High-grade)	3.352	1.124-9.991	0.030*
Mesenchymal component (Homologous type)	1.559	0.661-3.677	0.31
Stage (Stage III-IV)	1.821	0.773-4.289	0.17
Myometrial invasion ( $> 1/2$ )	1.135	0.476-2.704	0.776
Cervical invasion (Present)	0.827	0.244-2.811	0.762
LVSI (Present)	1.813	0.764-4.305	0.177
Peritoneal cytology (Present)	1.222	0.514-2.904	0.65
Ovarian metastasis (Present)	0.891	0.207-3.833	0.877
Lymph node metastasis (Present)	1.65	0.603-4.512	0.33
Epithelial component with aberrant expression of p53	1.017	0.410-2.522	0.97
Mesenchymal component with aberrant expression of p53	1.187	0.570-2.472	0.648
MMR - intact	3.368	0.450-25.195	0.237

Abbreviations: LVSI, lymphovascular space invasion; MMR, mismatch repair.

\*  $p < 0.05$