



Lighting Dark Places

John Kanemoto, Dr. Constance Walker, Dr. John Barentine, and Amy Juan

National Optical Astronomy Observatory, 950 N Cherry Ave, Tucson, AZ 85719

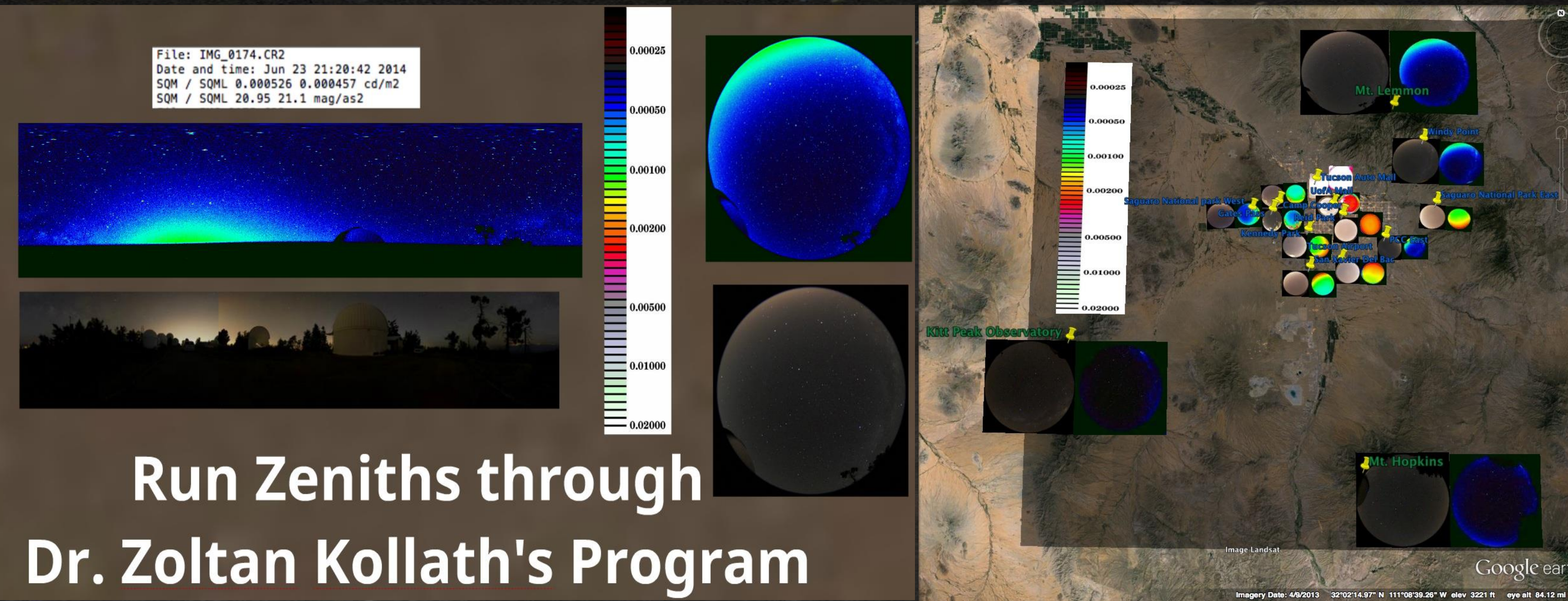


Introduction

Light pollution (LP), as defined by the International Dark Sky Association, is "any adverse effect of artificial light". Caused by unshielded, overly bright, and continuously lit residential/commercial lights, LP causes sleep disorders/anxiety, instigates diabetes, and halts the production of melatonin. Melatonin regulates wake and sleep cycles. Preliminary research has found melatonin can improve the immune system, as well as, prevent the onset and side effects of breast/prostate cancer.

The goal of my research at the NOAO was to inter-compare these LP measurement systems: Globe at Night (GaN), Dark Sky Meter (DSM), Loss of the Night (LoN), Digital Single-Lens Reflex (DSLR), and Sky Quality Meter with Lens (SQM-L).

Visual Analysis



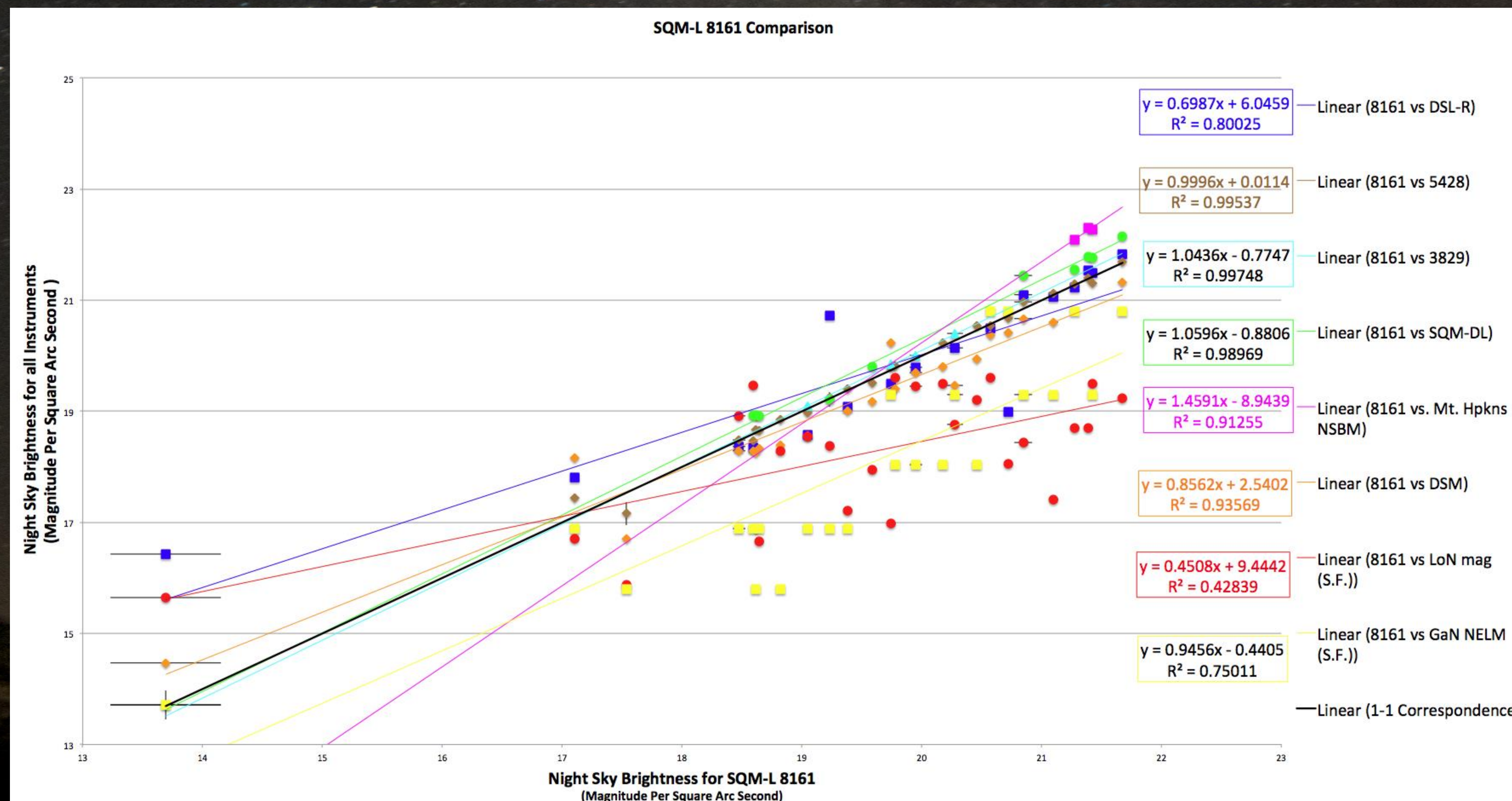
Run Zeniths through Dr. Zoltan Kollath's Program



Results

Focusing on the linear equations of the form $y=Mx+b$, the M-value depicts the correlation of that LP measurement device to the SQM-L 8161. $M=1$ and $b=0$ demonstrates a perfect correlation (1-1 Correspondence). The closer M is to one, the better the correlation. Therefore, GaN is the highest correlated cell phone application with $M=.9456$.

Data Acquisition



Conclusion

All three cell phone applications offer Dark Sky conservationists a window into an extraordinary future. With students, teachers, and community members recording LP data internationally, more sites can be identified as either: Dark Sky certified or in need of night sky conservation/education/legislation.

Next Steps for Research

Take more inter-city data to help strengthen the correlations and fill in the gap between 13 and 17 Magnitude Per Square Arc Second

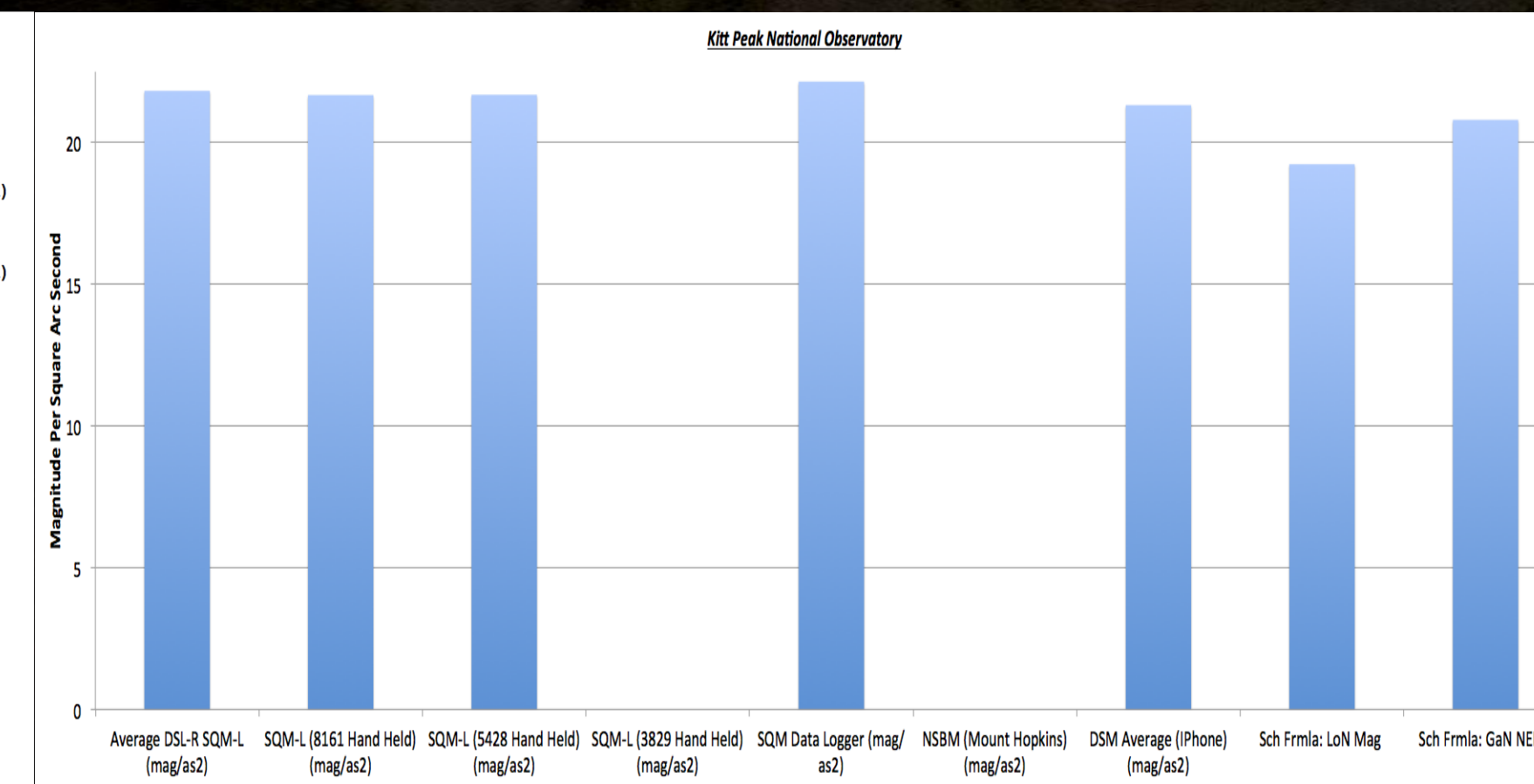
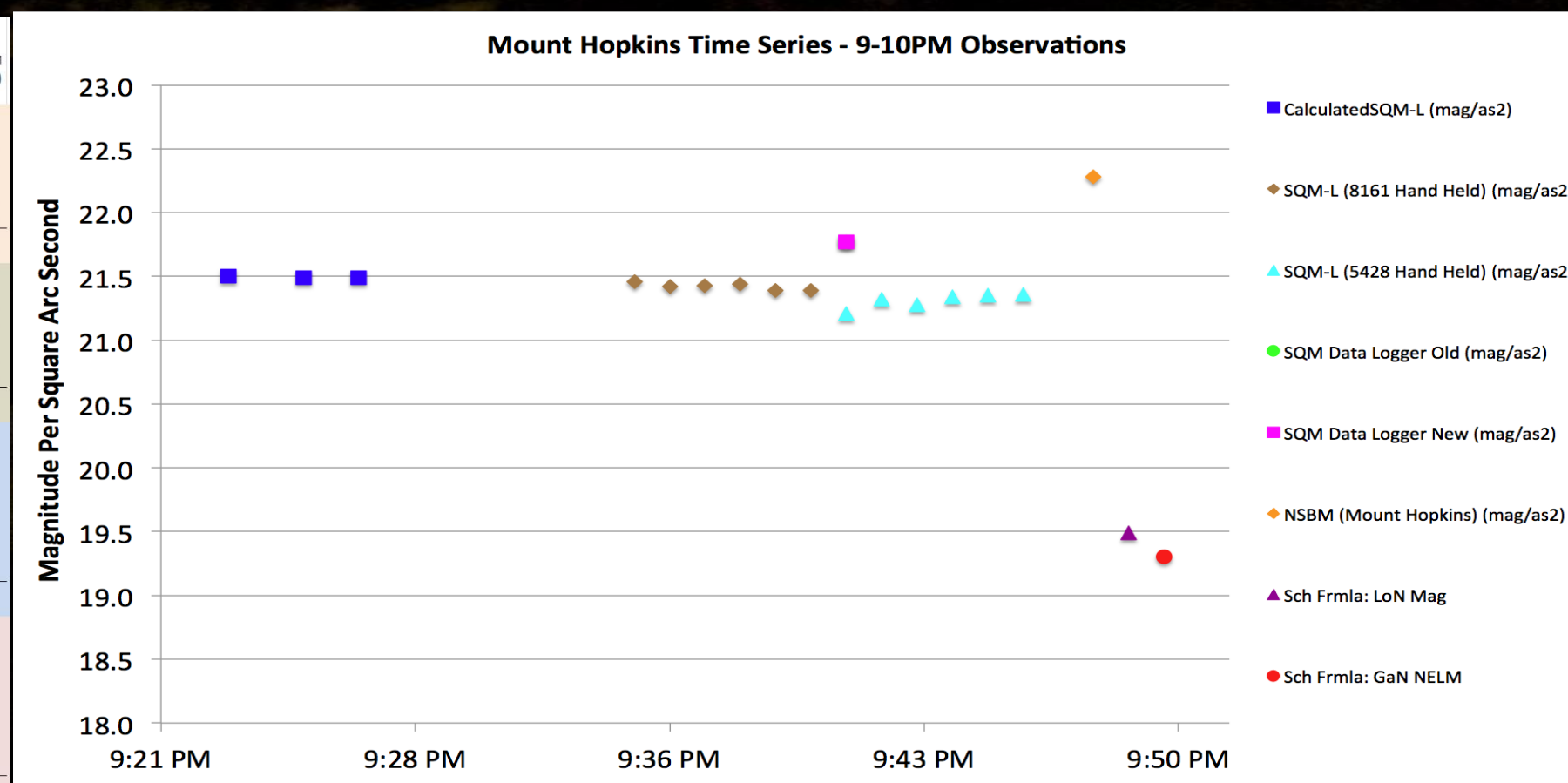
Take more Loss of the Night data to better constrain the correlation line of best fit

Conduct Tohono O'odham Nation Research

Create a Light Pollution Curriculum aligned with the United States of America Common Core and the Next Generation Science Standards

Table with 10 columns: Date, Time, Location, etc. for data recording.

Table with 10 columns: Date, Time, Location, etc. for data recording.



This material is based upon work supported by the Chevron Corporation, Howard Hughes Medical Institute, the National Marine Sanctuary Foundation, National Science Foundation, and S.D. Bechtel, Jr. Foundation. Any opinions, findings, and conclusions or recommendations expressed in this material are those of the authors and do not necessarily reflect the views of the funders. The STAR program is administered by the Cal Poly Center for Excellence in STEM Education (CESAME) on behalf of the California State University.

