

P83 A pilot study to assess peak systolic velocity as a possible marker of atherosclerotic burden using ultrasound

KOENIG, Carola, ATHERTON, Mark, CAVAZZUTI, Marco, RAMACHANDRAN, Sudarshan, GOMM, Corinna, STRANGE, Richard, HALLIDAY, Ian <<http://orcid.org/0000-0003-1840-6132>> and SCHENKEL, Torsten <<http://orcid.org/0000-0001-5560-1872>>

Available from Sheffield Hallam University Research Archive (SHURA) at:

<http://shura.shu.ac.uk/26365/>

This document is the author deposited version. You are advised to consult the publisher's version if you wish to cite from it.

Published version

KOENIG, Carola, ATHERTON, Mark, CAVAZZUTI, Marco, RAMACHANDRAN, Sudarshan, GOMM, Corinna, STRANGE, Richard, HALLIDAY, Ian and SCHENKEL, Torsten (2017). P83 A pilot study to assess peak systolic velocity as a possible marker of atherosclerotic burden using ultrasound. *Artery Research*, 20 (C), p. 76.

Copyright and re-use policy

See <http://shura.shu.ac.uk/information.html>



Artery Research

ISSN (Online): 1876-4401

ISSN (Print): 1872-9312

Journal Home Page: <https://www.atlantis-press.com/journals/artres>

P83: A PILOT STUDY TO ASSESS PEAK SYSTOLIC VELOCITY AS A POSSIBLE MARKER OF ATHEROSCLEROTIC BURDEN USING ULTRASOUND

Carola Koenig, Mark Atherton, Marco Cavazzuti, Sudarshan Ramachandran, Corinna Gomm, Richard Strange, Ian Halliday, Torsten Schenkel

To cite this article: Carola Koenig, Mark Atherton, Marco Cavazzuti, Sudarshan Ramachandran, Corinna Gomm, Richard Strange, Ian Halliday, Torsten Schenkel (2017) P83: A PILOT STUDY TO ASSESS PEAK SYSTOLIC VELOCITY AS A POSSIBLE MARKER OF ATHEROSCLEROTIC BURDEN USING ULTRASOUND, Artery Research 20:C, 76–76, DOI: <https://doi.org/10.1016/j.artres.2017.10.099>

To link to this article: <https://doi.org/10.1016/j.artres.2017.10.099>

Published online: 7 December 2019

Results: 5 female SCAD patients and 9 healthy controls (C) were enrolled (age 45 ± 9 vs 45 ± 13 years, $p = 0.95$; BMI 21 ± 3 vs $23 \pm \text{kg/m}^2$, $p = 0.22$; mean BP 77 ± 5 vs 85 ± 10 mmHg, $p = 0.053$). 2nd interface peak was reduced in the SCAD group (97 ± 29 vs 130 ± 19 , $p = 0.04$), whereas RMSE/mean was increased (1.89 ± 0.68 vs 0.97 ± 0.30 , $p = 0.02$). Similar values were found for the 1st interface. IMT (0.165 ± 0.031 vs 0.125 ± 0.022 mm, $p = 0.03$), but not AT (0.095 ± 0.020 vs 0.081 ± 0.020 mm, $p = 0.20$) and IMAT (0.260 ± 0.049 vs 0.206 ± 0.030 mm, $p = 0.053$), was significantly higher in SCAD.

Radial internal diameter and wall/lumen ratio were similar; conversely WCSA was increased in SCAD (1.69 ± 0.48 vs 1.07 ± 0.37 mm², $p = 0.02$).

Conclusions: Radial arteries of SCAD patients were characterized by increased wall thickness. Furthermore, the 2nd echogenic layer exhibited loss of echogenicity and inhomogeneity, features similar to FMD patients.

P82

IMAGE-BASED CHARACTERIZATION OF PLAQUE LIPID CONCENTRATION CHANGES IN TIME AND THE ROLE OF STATIN THERAPY

Kristen Meiburger¹, Gianfranco Varetto², Pietro Rispoli², Filippo Molinari¹

¹Dipartimento di Elettronica e Telecomunicazioni, Politecnico di Torino, Italy

²Dipartimento di Scienze Chirurgiche, AOU Città della salute e della scienza di Torino, Italy

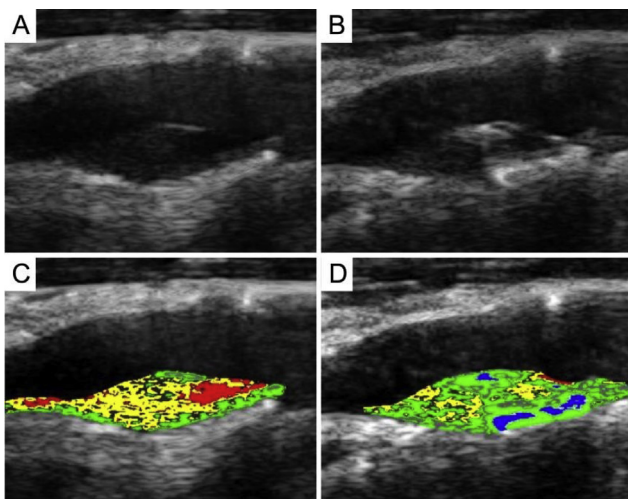
Introduction: Carotid artery atherosclerosis is an established risk factor for cerebrovascular events. Core lipid-rich plaques are considered at a higher risk of embolization compared to fibrous or calcified lesions. Contrast enhanced ultrasound (CEUS) is effective for studying carotid plaques, providing a virtual histology [1]. Here we assess the behavior of non-surgical carotid plaques in terms of lipid variation over time.

Methods: Eleven patients were enrolled (University of Turin) with a 50–69% (ECST) carotid asymptomatic stenosis. Seven patients were on statin therapy. All patients signed an informed consent and underwent standard carotid ultrasound (MyLab25 Gold, Esaote). A 1.5ml bolus of SonoVue (Bracco Spa) was injected; then a 5ml saline flush. Post-contrast Bmode images (180s after injection) were saved and analyzed offline. All patients repeated this protocol after 6 months.

The plaques were segmented, intensity normalized [2], and characterized according to a previous method [3].

Results: We evaluated small cohorts according to lipid concentration changes, identifying four categories. One patient had a plaque showing no lipid variation; four patients showed a slight decrease; four patients a remarkable decrease; two patients an increase.

Seven patients with a decrease in lipid concentration were on statin therapy, while both patients with an increase in lipids were not.



Example of image-based characterization. (A) B-mode post contrast agent injections at t1. (B) B-mode post contrast agent injections at t2, 6 months after t1. (C) Characterization of B-mode image at t1 (40% lipids). (D) Characterization of B-mode image at t2 (13% lipids). Red: blood; Yellow: lipids; Green: fibrous; Blue: Calcified; Black: non-classified.

Conclusions: A method for asymptomatic carotid plaque characterization using CEUS is presented. We focused on plaque lipid variations and the possible influence of statin therapy. We showed that carotid plaques are rarely stable, but rather continuously change composition over time and how statins could play an important role in this process.

References

- [1] Lal BK, Hobson RW, Pappas PJ, Kubicka R, Hameed M, Chakhtura EY, Jamil Z, Padberg FT, Haser PB, Durán WN. Pixel distribution analysis of B-mode ultrasound scan images predicts histologic features of atherosclerotic carotid plaques. *Journal of vascular surgery*. 2002 Jun 30;35(6):1210-7.
- [2] Kakkos SK, Griffin MB, Nicolaidis AN, Kyriacou E, Sabetai MM, Tegos T, Makris GC, Thomas DJ, Geroulakos G, Risk of Stroke (ACSRS) Study Group. The size of juxtaluminar hypochoic area in ultrasound images of asymptomatic carotid plaques predicts the occurrence of stroke. *Journal of vascular surgery*. 2013 Mar 31;57(3):609-18.
- [3] Molinari F, Liboni W, Giustetto P, Pavanelli E, Marsico A, Suri JS. Carotid plaque characterization with contrast-enhanced ultrasound imaging and its histological validation. *Journal for Vascular Ultrasound*. 2010 Dec 1;34(4):175-84.

P83

A PILOT STUDY TO ASSESS PEAK SYSTOLIC VELOCITY AS A POSSIBLE MARKER OF ATHEROSCLEROTIC BURDEN USING ULTRASOUND

Carola Koenig¹, Mark Atherton¹, Marco Cavazzuti¹, Sudarshan Ramachandran², Corinna Gomm², Richard Strange³, Ian Halliday⁴, Torsten Schenkel⁴

¹Brunel University London, UK

²Heart of England Foundation NHS Trust, UK

³Keele University, UK

⁴Sheffield Hallam University, UK

Introduction: Ischemic heart disease (IHD) has been associated with lower peak systolic velocity (PSV) on penile Doppler measurements [1]. This study establishes whether carotid ultrasound (US) PSV was associated with computational fluid dynamics (CFD) outputs, which in turn may contribute to IHD pathogenesis.

Methods: A sample of 57 subjects (with IHD: 27, without IHD: 30) had US velocity profiles (left- common carotid artery) determined between 10–12 equispaced points. Bezier curve fitting was used to fit the profile through the measured velocity points for a normalised diameter. PSV was correlated against CFD results such as wall shear stress (WSS) [2]. Difference in PSV between individuals with/without IHD was studied via t-test. Linear regression was carried out to see if peak systolic velocity was associated with CFD outputs. Any significant associations were analysed within stratified groups (with/without IHD).

Results: PSV was significantly lower ($p = 0.042$) in subjects with IHD (with IHD: 53.6 ± 17.3 cm/s, without IHD: 62.8 ± 16.1 cm/s). PSV was associated with carotid bulb average pressure drop ($p < 0.001$), area of average bulb WSS (<1 Pa: $p = 0.016$, <2 Pa: $p = 0.006$, <3 Pa: $p = 0.001$). All the above associations remained significant in individuals with IHD (average bulb pressure drop: $p = 0.001$, average bulb WSS (<1 Pa: $p = 0.013$, <2 Pa: $p = 0.008$, <3 Pa: $p = 0.003$). In subjects without IHD, PSV was associated with only average bulb pressure drop ($p = 0.016$).

Conclusions: This study suggests that further work on PSV and its associations with CFD outputs is required in individuals with and without IHD in various vascular beds.

Reference

- [1] Ei-Sakka A, Morsy AM. *Urology* 2004; 64: 346-50. [2] Cecchi E. et al., 1, *Atherosclerosis*. 2011 Feb; 214(2): 249-56

P84

HIGH-FRAME RATE VECTOR FLOW IMAGING: RELATIONSHIP BETWEEN CAROTID BIFURCATION GEOMETRY AND FLOW PATTERNS

A. Alfredo Goddi¹, L. Luca Aiani¹, Y. Yigang Du², X. Xujin He², Y. Yingying Shen², L. Lei Zhu²

¹Centro Medico SME – Diagnostica per Immagini (SME Medical Center – Diagnostic Imaging), Varese, Italy

²Shenzhen Mindray Bio-Medical Electronics Co. Ltd., Shenzhen, China

Background: The laminar flow movement in straight arteries is affected by anatomical factors such as bifurcation, lumen diameter changes or plaques.