

# Journal Pre-proof

Maternal presence or absence alters nociceptive responding and cortical anandamide levels in juvenile female rats

Grace O'Sullivan, Rachel M. Humphrey, Aoife M. Thornton, Daniel M. Kerr, Brian E. McGuire, Line Caes, Michelle Roche



PII: S0166-4328(20)30411-3  
DOI: <https://doi.org/10.1016/j.bbr.2020.112712>  
Reference: BBR 112712

To appear in: *Behavioural Brain Research*

Received Date: 28 February 2020  
Revised Date: 21 April 2020  
Accepted Date: 16 May 2020

Please cite this article as: O'Sullivan G, Humphrey RM, Thornton AM, Kerr DM, McGuire BE, Caes L, Roche M, Maternal presence or absence alters nociceptive responding and cortical anandamide levels in juvenile female rats, *Behavioural Brain Research* (2020), doi: <https://doi.org/10.1016/j.bbr.2020.112712>

This is a PDF file of an article that has undergone enhancements after acceptance, such as the addition of a cover page and metadata, and formatting for readability, but it is not yet the definitive version of record. This version will undergo additional copyediting, typesetting and review before it is published in its final form, but we are providing this version to give early visibility of the article. Please note that, during the production process, errors may be discovered which could affect the content, and all legal disclaimers that apply to the journal pertain.

© 2020 Published by Elsevier.

## Maternal presence or absence alters nociceptive responding and cortical anandamide levels in juvenile female rats

Grace O'Sullivan<sup>a,b</sup>, Rachel M. Humphrey<sup>a,c,e</sup>, Aoife M. Thornton<sup>c,e</sup>, Daniel M. Kerr<sup>d,e</sup>, Brian E. McGuire<sup>a,b</sup>, Line Caes<sup>f</sup>, Michelle Roche<sup>a,c,e\*</sup>

*<sup>a</sup> Centre for Pain Research, National University of Ireland Galway, Ireland; <sup>b</sup> School of Psychology, National University of Ireland Galway, Ireland; <sup>c</sup> Physiology, School of Medicine, National University of Ireland Galway, Ireland; <sup>d</sup> Pharmacology, School of Medicine, National University of Ireland Galway, Ireland; <sup>e</sup> Galway Neuroscience Centre, National University of Ireland Galway, Ireland; <sup>f</sup> Psychology, Faculty of Natural Sciences, University of Stirling, Scotland, UK*

\*Corresponding Author: \*Dr Michelle Roche, Physiology, School of Medicine, National University of Ireland, Galway, University Road, Galway, Ireland.

Tel: 353 91 495427 Fax: 353 91 494544

Email: [Michelle.roche@nuigalway.ie](mailto:Michelle.roche@nuigalway.ie)

### Highlights

- Juvenile female rats exhibit mechanical and heat hypoalgesia when tested following acute isolation compared with maternal presence
- Juvenile female rats exhibit cold and inflammatory hyperalgesia when tested following acute isolation compared with maternal presence

- Maternal presence during nociceptive testing is associated with reduced cortical anandamide levels
- Nociceptive testing is associated with reduced cortical CB<sub>2</sub> receptor expression

## **Abstract**

The influence of parental support on child pain experiences is well recognised. Accordingly, animal studies have revealed both short- and long-term effects of early life stress on nociceptive responding and neural substrates such as endocannabinoids. The endocannabinoid system plays an important role in mediating and modulating stress, social interaction, and nociception. This study examined the effects of maternal support or acute isolation on nociceptive responding of female rats to a range of stimuli during the juvenile pre-adolescent period and accompanying changes in the endocannabinoid system. The data revealed that juvenile female Sprague Dawley rats (PND21-24) isolated from the dam for 1hr prior to nociceptive testing exhibited increased latency to withdraw in the hot plate test and increased mechanical withdrawal threshold in the Von Frey test, compared to rats tested in the presence of the dam. Furthermore, isolated rats exhibited reduced latency to respond in the acetone drop test and enhanced nociceptive responding in the formalin test when compared to dam-paired counterparts. Anandamide, but not 2-AG, levels were reduced in the prefrontal cortex of dam-paired, but not isolated, juvenile rats following nociceptive testing. There was no change in the expression of CB<sub>1</sub>, FAAH or MAGL; however, CB<sub>2</sub> receptor expression was reduced in both dam-paired and isolated rats following nociceptive testing. Taken together the data demonstrate that brief social isolation or the presence of the dam modulates nociceptive responding of juvenile rat pups in a modality specific manner, and

suggest a possible role for the endocannabinoid system in the prefrontal cortex in sociobehavioural pain responses during early life.

**Abbreviations:** 2-AG: 2-Arachidonoylglycerol, AEA: anandamide; ADT: Acetone drop test; CB<sub>1</sub>: cannabinoid receptor 1; CB<sub>2</sub>: cannabinoid receptor 2; CNS: central nervous system; CPS: Composite Pain Score; FAAH: Fatty acid amide hydrolase; HPT: Hot plate test; MAGL: Monoacylglycerol lipase; PFC: prefrontal cortex; VFT: Von Frey test

**Keywords:** nociception; social isolation; maternal presence; juvenile; cannabinoid

## 1. Introduction

It is well recognised that parental presence during painful experiences can modulate a child's responses to pain from the neonatal period through to adolescence (1-3). For the most part the effects reported are positive, with parental presence associated with reductions in pain experienced by the child, however, the effects depend on the nature, timing and stress status of the caregiving (4-7). Similarly, preclinical animal studies have manipulated dam-pup interactions during the first 2 weeks of life to model early-life stress (8, 9), an effect which results in an array of physiological changes including altered nociceptive responding (for reviews, see: 10, 11). For example, several studies have demonstrated that short term (up to 30 minutes) isolation of neonatal rodent pups from the dam and siblings result in thermal hypoalgesia (12-17), while longer-term isolation (4-6hr) is associated with either no change (16) or thermal hyperalgesia (18). High levels of maternal care to pups following an early-life pain experience has been shown to result in reduced nociceptive responding (hypoalgesia) to thermal noxious stimuli in adulthood (19). Female rats experiencing social rejection during

adolescence exhibit decreased thermal sensitivity in adulthood (20, 21). Furthermore, social reunion between male, but not female adult sibling mice, following separation at weaning, has been shown to result in an increased heat nociceptive threshold (22-24). While the effects of maternal support or early neonatal/post-weaning isolation on thermal nociceptive responding have been examined, there has been a lack of studies examining the effects on nociceptive responding to mechanical, cold or inflammatory stimuli or examining effects during the juvenile pre-weaning period.

The endocannabinoid system (ECS) is a retrograde neuromodulatory lipid signalling system known to play a key role in a host of physiological functions including stress, pain and social responding (21, 25-27). Comprised of the CB<sub>1</sub> and CB<sub>2</sub> receptors, the naturally-occurring endogenous ligands (endocannabinoids) – namely, anandamide and 2-arachadonyl glycerol (2-AG) - and the enzymes involved in the synthesis and degradation of the endocannabinoids, the ECS is uniquely positioned to modulate synaptic transmission and plasticity. Early-life stress has been shown to result in immediate and lasting alterations in the ECS (28-30). Furthermore, several studies have revealed an important role for the ECS in mediating and modulating social behaviour during adolescence and its impact on nociceptive responding (20, 31, 32). In addition to its role in executive and social functioning, the prefrontal cortex (PFC) is a key brain structure involved in sensory and affective pain processing [(for reviews see (33, 34)]. Furthermore, several studies have demonstrated an important modulator role for the ECS in the PFC in mediating and modulating nociceptive responding in preclinical pain models (35-37). However, there have been no studies examining whether the ECS in the PFC is altered during acute social withdrawal and pain during the juvenile period.

The present study examined the effects of maternal presence versus absence on nociceptive responding to thermal heat, cold, mechanical and inflammatory noxious stimuli in juvenile female rat pups. Despite calls to include females in preclinical research (38), pain studies continue to be predominantly conducted in males. There has been a lack of studies examining pain responses to brief social isolation and to our knowledge no study investigating such responses in female rodents. Female rats have been demonstrated to exhibit pronounced changes in pain sensitivity and endocannabinoid function as a result of prolonged isolation and peer rejection (20, 21, 31). Thus a further aim of this study was to examine endocannabinoid levels and expression of receptors and enzymes of the ECS in the prefrontal cortex, and determine if maternal presence/absence-induced changes in nociceptive responding in female rats are associated with alterations in the ECS.

## **2. Materials and Methods**

### **2.1. Animals and Experimental Design**

Male and female Sprague-Dawley (200–340 g; Charles River Laboratories, UK) rats were group housed under controlled conditions (temperature 20-24°C, 40-50% relative humidity, and 12/12h light cycle with lights on at 07:00) and allowed 7 days to acclimatise before mating. Food and water were available *ad libitum*. Ten pregnant females were singly housed and allowed to raise their own pups. Litters ranged in size from 7-12 pups (3-7 females per litter; no litters were exclusively male or female) and weaning took place between PND21-24 (PND21: 4 litters; PND23: 5 litters; PND24:1 litter). At the time of weaning, three female pups from each litter were assigned to one of three groups (1) Dam-paired nociceptive tested, (2) Isolated nociceptive tested, and (3) Behaviourally-naïve (n = 10 per group). Male and unselected female pups were rehoused in same-sex groups and used in other experiments. Pups assigned to the dam-paired nociceptive tested group were kept in the original home cage

with the dam (siblings removed 1hr prior to testing), and the dam was present during nociceptive testing. The pups in the isolated group were taken from the dam and siblings and singly housed in a new cage for 1hr prior to, and throughout, nociceptive testing (total period of isolation approx. 4 hours). Nociceptive responding was carried out between 09:00-15:00 hr and each animal was tested in the same sequential order: responding to noxious heat was assessed using the hot plate (HPT), followed by mechanical responding using the Von Frey (VFT), cold hypersensitivity using the acetone drop test (ADT) and inflammatory nociception using the formalin test. In order to ensure that all testing occurred between 09:00-15:00, and animal were isolated/weaned between PND21-24, the experiment was conducted over a five day period with pups from two litters tested in the three experimental groups per day (2 pups x 3 groups x 5 days = 30 animals). Animals were sacrificed immediately following nociceptive testing (group 1 and 2), or taken directly from the home cage (group 3) and sacrificed. The brain was removed and frozen at -80°C. PFC dissection involved cutting a 1.5mm coronal tissue section containing the PFC (Bregma 4.7 to 3.2mm) from the frozen brain using a rat brain matrix. The olfactory bulbs were removed from the section and PFC was dissected from the right and left sides (Fig 2; (39)) and randomly assigned for either the assessment of endocannabinoid levels or mRNA expression of enzymes and receptors. The experimental protocol was carried out in accordance with the guidelines of the Animal Care and Research Ethics Committee, National University of Ireland Galway under licence from the Health Products Regulatory Authority, in compliance with the European Communities Council directive 2010/63/EU and the ARRIVE guidelines.

## **2.2. Behavioural testing**

### **2.2.1. The Hotplate Test (HPT)**

The HPT apparatus (Harvard Apparatus, Kent, United Kingdom) was set to a test temperature of  $55 \pm 1^\circ\text{C}$ , in line with previous studies (40, 41). The latency to hind-paw lick was recorded with a maximum cut-off at 40 seconds, to prevent tissue damage. To accommodate the dam-paired pups, their home cage (open top cage containing the dam only) was placed at a maximum distance of 40cm from the HPT apparatus while the pup was tested. The animal was returned to its home cage (containing the dam (dam-paired) or singly (isolated)) following testing and the test arena was cleaned and wiped down between uses, using 0.5% acetic acid solution.

### 2.2.2 *The Von Frey test (VFT) and Acetone Drop Test (ADT)*

Both the VFT and ADT were conducted sequentially in a six-compartment Perspex arena (11cm x 20cm x 15cm) with wire mesh flooring, as previously described (42, 43). To accommodate the dam-pup group, the divider walls were substituted for Perspex partitions punched with holes of 0.5 cm diameter at 2 cm intervals, to enable the dam and pup to see and smell each other without physical contact during both habituation and testing. Pups in the isolated group were tested in the same arena, but with no animal in the second testing chamber. Five minutes following the HPT, pups (+/- dam) were habituated to the arena for 25 minutes, after which time von Frey filaments (Touch-Test®Sensory Evaluators; North Coast Medical Inc., Gilroy, CA, USA) of increasing forces (0.16g – 180g) were applied perpendicular to the plantar surface of the hind paw, for up to a maximum of 5 seconds or until flinching, licking or withdrawal of the paw occurred. Each filament was applied five times on each hind paw (alternating between right and left paws, for a total of ten withdrawals), and filament force was increased until a 100% positive response (5 responses to 5 applications) was observed for two consecutive filaments. Results were expressed as the



lowest filament to elicit a response and the percentage response frequency of paw withdrawals (number of withdrawals/10 x 100) and an EC50 value generated for each animal.

Immediately following VFT, the animals remained in the apparatus for ten minutes, before being assessed for cold allodynia with the ADT. In brief, a 0.2ml droplet of acetone (Sigma-Aldrich, Dublin, Ireland) was applied to the plantar surface of each hind paw in turn, ensuring to avoid foot pads. Behaviours were scored for latency to first response (flinch, lick, paw shake, or withdrawal of paw) within the cut-off time of 60 seconds. If the animal did not respond within 60s, the cut-off time was recorded as the latency. Three trials per paw were conducted, and the average of the 3 trials for each hind paw was calculated.

### 2.2.3 Formalin test

Immediately following the ADT, the pups were placed back into their home cage and transferred to a new procedure room where they were immediately placed into the formalin arena for a 10 minute habituation period. The arena consisted of a black Perspex observation chamber (30 x 30 x 30 cm), divided in 2 equal parts by a Perspex panel (holes of 0.5 cm diameter punched at 2 cm intervals); this enabled the dam-pup pairs to see and smell each other, but not interact, during both the habituation and the formalin trial (Fig. 1). Light intensity was maintained at 35 lux and behaviour recorded by a video camera mounted beneath the observation chamber. Testing was carried out as previously described (41, 44)

Distance moved, rearing and grooming during the 10 minute habituation trial was recorded. Immediately following habituation, the pup was removed, gently restrained and the right hind paw diameter was measured using Vernier callipers, before administering an intra-plantar injection of 20µl 1% formalin in sterile saline. The pup was then placed back into the arena for 60 minutes and behaviour was recorded onto video and analysed with the aid of EthoVision® XT11.5 video-tracking software (Noldus, Netherlands). Formalin-evoked

nociceptive behaviour was scored over the entire 60 min trial and analysed in 5 minute time bins using the weighted composite pain scoring technique (CPS-WST<sub>0,1,2</sub>) (45): time spent elevating the injected paw (C1), and licking, shaking, biting, or holding the injected paw (C2) were combined to obtain a composite pain score ( $CPS = C1 + 2(C2) / (\text{duration of analysis period})$ ). There are 3 distinct phases to the formalin test (46), phase 1 (0-5 min time period: which represents direct activation of peripheral nociceptors), the interphase (5-10min period; hyperpolarization of nociceptors) and phase 2 (>10 min period: which represents engagement of inflammatory and/or central nociceptive responses including sensitization). As such, CPS was also calculated for phase 1 (0-5 min) and phase 2 (10-20min) of the formalin test. Distance moved, duration of rearing and grooming were also recorded. At the end of the test period, paw diameter were recorded again before sacrifice. Two pups from the isolated cohort received incorrect concentration of formalin into the hind paw and thus were excluded from formalin and post-mortem analysis (final group number for the formalin test are Dam-Pup group, n=10; Isolated group, n=8).

### **2.3. Quantification of endocannabinoid levels in the PFC using LC-MS/MS**

Quantitation of endocannabinoids using mass spectrometry was carried out as described previously (44, 47). In brief, PFC samples were homogenized in 400  $\mu$ l 100% acetonitrile containing deuterated internal standards (0.014 nmol AEA-d8, 0.48 nmol 2-AG-d8), centrifuged at 14,000g for 15 min at 4°C, and then the supernatant was evaporated to dryness. Lyophilized samples were re-suspended in 40  $\mu$ l 65% acetonitrile and separated on a Zorbax C18 column by reversed-phase gradient elution (65% to 100% acetonitrile with 0.1% formic acid). Analyte detection was carried out in electrospray-positive ionization and multiple reaction monitoring mode on an Agilent 1100 HPLC system coupled to a triple quadrupole 6460 mass spectrometer (Agilent Technologies Ltd, Cork, Ireland). Quantification of each

analyte was performed by ratiometric analysis using Masshunter Quantitative Analysis Software (Agilent Technologies, Cheshire, UK) and expressed as nmol or pmol per gram of tissue.

#### **2.4. Expression of endocannabinoid-related catabolic enzymes and receptors in the PFC**

PFC tissue was placed into RA1 buffer and mRNA was extracted using the NucleoSpin RNA II total RNA isolation kit, in accordance with manufacturer instructions (Macherey-Nagel, Germany). mRNA was reverse transcribed into cDNA using a High Capacity cDNA Archive kit (Applied Biosystems, UK) and Taqman gene expression assays (Applied Biosystems, UK) were used to quantify the gene of interest using real-time PCR performed using a StepOne Plus instrument (Applied Biosystems, UK), as previously described (44, 47). Assay IDs for the genes were CB<sub>1</sub> (Rn02758689), CB<sub>2</sub> (Rn03993699), FAAH (Rn00577086) and MAGL (Rn00593297), and VIC-labelled  $\beta$ -actin was used as an endogenous control to normalize gene expression data. PCR was performed using Taqman PCR Master Mix, and samples were run in duplicate. The cycling conditions were 90°C for 10 min and 40 cycles of 90°C for 15 min followed by 60°C for 1 min. Relative gene expression was calculated using the  $\Delta\Delta$ CT method and expressed as % change from behaviourally-naïve control group.

#### **2.5. Statistical analysis**

The SPSS 24.0 (IBM Corp, Armonk, NY) statistical program was used to analyse all data. Normality and homogeneity of variance were assessed using Shapiro-Wilk and Levene's test, respectively. Data from the two behavioural groups were analysed using unpaired t-tests, and CPS in the formalin test was assessed using repeated measures analysis of variance (ANOVA). Endocannabinoid levels and gene expression were assessed using one-way ANOVA with post-hoc Fisher LSD tests. If data were found to be non-parametric, three

transformations were applied, in this order: square root of the data values, log of the data values, and ranking of the data values. Also, it was checked if the highest standard deviation was less than or equal to 2 times the smallest standard deviation for the particular data set being analysed (48). All data was parametric prior to or following these transformations. Statistical significance was set at  $p \leq 0.05$ . All graphs were constructed using GraphPad Prism and data are presented as group mean  $\pm$  standard error of the mean (SEM).

### 3. Results

#### ***3.1. Isolated juvenile female rats exhibit thermal and mechanical hypoalgesia and cold allodynia when compared to pups tested in the presence of the dam***

The effect of acute isolation versus social support (presence of dam) of juvenile rat pups on nociceptive responding to heat, cold and mechanical stimuli was examined. There was a significant difference on latency to respond in the hot plate test, with isolated juvenile pups demonstrating longer withdrawal latencies than dam-paired counterparts [ $t(18)=2.29$ ,  $p=0.034$ ] (Fig. 1a). During the acetone drop test, isolated juvenile pups demonstrated significantly reduced withdrawal latencies compared to dam-paired juveniles [ $t(16)=2.33$ ,  $p=0.033$ ] (Fig. 1b). Analysis of the sensitivity to mechanical stimuli during Von Frey testing revealed that isolated juvenile pups required heavier filaments to provoke a withdrawal response [ $t(18)=3.74$ ,  $p=0.002$ ] (Fig. 1c), and demonstrated a significantly increased paw withdrawal threshold compared to dam-paired juvenile pups [ $t(18)=4.15$ ,  $p=0.0006$ ] (Fig. 1d).

#### ***3.2 Nociceptive responding to an inflammatory stimulus is increased in isolated juvenile female rat pups compared to pups tested in the presence of the dam***

Rats were exposed to a novel Perspex arena for 10 minutes; analysis of this habituation period revealed no significant difference between isolated and dam-paired juvenile pups in relation to distance moved, rearing or grooming behaviour (Table 1).

In order to examine the effect of isolation vs social support on inflammatory nociceptive responding, juvenile rats received an intra-plantar formalin administration and behaviour was assessed over a 60 minute period. Repeated measures ANOVA revealed a significant effect of time [ $F_{(11, 176)} = 83.61, p < 0.001$ ] on the composite pain score (CPS) per 5 min time bin over the course of the 60 minute formalin trial (Fig. 1e). Further discrete analysis of the two main phases of the formalin test revealed that isolated pups exhibited a significant increase in CPS during the first phase of the formalin trial ( $p = 0.035$ ), with a trend for a significant increase in responding in the second phase which just failed to reach statistical significance ( $p = 0.06$ ) (Fig. 1f). There were no differences between dam-paired and isolated pups in relation to paw oedema at 60 mins post-formalin administration [ $t(16) = 0.063, p = 0.950$ ] (Fig. 1g).

During the 60 minute formalin trial, isolated juvenile pups moved significantly less [ $t(16) = 4.621, p = 0.0003$ ] and reared less [ $t(16) = 3.30, p = 0.004$ ] than dam-paired pups (Table 1). There was no significant difference between the groups in relation to the duration of grooming during the test [ $t(16) = 0.318, p = 0.755$ ] (Table 1).

### ***3.2. PFC anandamide levels are reduced in pups with a dam present during nociceptive testing***

Endocannabinoid levels were assessed in the PFC following nociceptive testing and in a behaviourally-naïve control group. Analysis revealed a significant effect of nociceptive testing on levels of the endocannabinoid anandamide (AEA) in the PFC [ $F_{(2,28)} = 5.176, p = 0.013$ ] (Fig. 2a). *Post-hoc* analysis revealed that levels of AEA were significantly lower in the PFC of dam-paired pups following nociceptive testing ( $p = 0.010$ ), an effect not observed

in isolated pups (Fig 2a). There was no significant difference in 2-AG levels in the PFC between any of the groups [ $F_{(2,28)}= 1.32, p=0.284$ ] (Fig. 2b).

### **3.3. Nociceptive testing is associated with decreased in $CB_2$ receptor expression in the PFC**

Fatty acid amide hydrolase (FAAH) is the enzyme primarily responsible for the catabolism of anandamide, while monoacylglycerol lipase (MAGL) preferentially metabolises 2-AG. There were no significant difference between the groups in mRNA expression of FAAH [ $F_{(2,27)}= 0.01, p=0.990$ ], MAGL [ $F_{(2,27)}= 2.16, p=0.137$ ] or the  $CB_1$  receptor [ $F_{(2,27)}= 0.730, p=0.493$ ] in the PFC (Fig. 2c-e). Analysis revealed a significant effect group on the mRNA expression of  $CB_2$  in the PFC [ $F_{(2,27)}= 18.84, p=0.0001$ ]. *Post-hoc* analysis revealed that levels of  $CB_2$  were significantly lower in both isolated ( $p = 0.0001$ ) and dam-paired pups ( $p = 0.0001$ ), compared to the behaviourally-naïve control group (Fig. 2f).

## **4. Discussion**

The data presented here demonstrate that nociceptive responding of juvenile female rat pups is altered depending on maternal presence or acute isolation. Specifically, isolated juvenile pups exhibit enhanced inflammatory and cold nociceptive responding, and reduced mechanical and heat nociceptive responding, when compared to pups tested in the presence of a dam. Conversely, the presence of the dam resulting in cold and inflammatory hypoalgesia, and mechanical and heat hyperalgesia in juvenile pups, when compared to pups tested in isolation. Taken together, the data indicating that maternal presence/isolation modulates nociceptive responding of juvenile female rat pups depending on the modality being examined.

To date, studies examining the effects of short term isolation and/or maternal support on nociceptive responding have been carried out in the early postnatal period and have only examined heat nociceptive thresholds. For example, 6 day old rats isolated from the dam for 30 minutes exhibit increased tail flick latencies (12) and 10-12 day old rat pups isolated for 5-8 minutes exhibit longer latencies in the hot plate test (i.e. hypoalgesia), (13-17). Longer-term pup isolation (4-6 hr) has been associated with either no change (16) or reduced (18) latency to respond in the hotplate test. Thus short, but not long term, isolation induces a decrease in nociceptive responding to noxious heat stimuli in the early neonatal period. The current data expand on this data demonstrating that juvenile pups (PND21-24) isolated from the dam and siblings for a 1hr period also exhibit an increase in nociceptive thresholds to a thermal noxious stimulus and expand this to include an increase in thresholds to mechanical noxious stimuli. Although this is the first study to examine effects in the juvenile period, it has been demonstrated that mice isolated for 1 hour at 6-8 weeks of age exhibit increased mechanical thresholds and paw withdrawal latencies compared to non-isolated cage mates (49). The precise mechanisms mediating isolation-induced thermal and mechanical hypoalgesia remain to be determined, however effects may be due to isolation stress-induced engagement of the descending pain pathway and resultant analgesia (stress-induced analgesia) (27, 50). Stress-induced analgesia is an important survival mechanism which results in reduced nociceptive responding to demanding acute internal and/or external stressors. However, stress-induced analgesia can be modality specific and effects are dependent on the type and intensity of the stressful event (psychological vs physical; conditioned vs unconditioned) (50, 51). Accordingly, while acute isolation results in inhibition of nociceptive responding to heat and mechanical noxious stimuli, our data demonstrated that rat pups tested in isolation exhibited enhanced responding to a cold innocuous stimulus (cold allodynia) compared to dam-paired counterparts. Thus, the effects of acute isolation on nociceptive responding of juvenile female

pups depends on the modality under investigation, which may reflect the involvement of the different spinal and/or supraspinal mechanisms mediating the nociceptive responses to these varying heat, cold and mechanical stimuli.

During the formalin test, pups tested in isolation exhibited increased inflammatory nociceptive responding when compared to those tested in the presence of the dam. The increase in nociceptive responding occurred during the first phase, with a tendency for an increase during the second phase also noted. Furthermore, isolated rats exhibit reduced locomotor activity and rearing during the formalin test which may reflect indirect behavioural responses to pain (i.e. less movement due to greater pain). These data highlight effects of brief isolation on nociceptive responding on both the initial somatosensory processing and the longer term supraspinal modulation of the inflammatory pain response. Although the mechanism mediating these effects remains to be determined, it is possible that the presence of the dam may act as a distractor from the inflammatory pain (distraction-induced analgesia). This is supported by the data demonstrating that rats tested in the presence of the dam exhibited greater distance moved and rearing during the formalin trial, primarily directed towards the partition separating the dam and pup (Fig1). Previous studies have demonstrated that the presence of a confined conspecific does not alter formalin-induced inflammatory nociceptive responding (52) or results in hyperalgesia to visceral inflammatory pain (acetic acid) (53). However, the conspecific used in the aforementioned studies were unfamiliar to the test animal and testing was conducted using adult rodents. Furthermore, Langford et al demonstrated that mild social threat produces hyperalgesia (53). Thus, the presence of the dam may result in a distraction that promotes engagement of social circuits and descending pain pathways to modulate nociceptive responding.

It should be noted that isolated animals exhibit hypoalgesia the first two nociceptive tests conducted (hot plate and von frey tests) and hyperalgesia in the subsequent two tests



(acetone and formalin tests). We cannot rule out that the heat and mechanical hypoalgesia was a transient effect of acute isolation or that sequential testing of the animals impacted on subsequent nociceptive responses. However regardless of the direction of change, the data confirm that acute isolation/maternal support alters nociceptive responding of female juvenile rat pups.

The ECS is a key modulator of stress- and distraction-induced analgesia (50, 54) and plays an important role in the prefrontal cortex in mediating and modulating nociceptive responding (34, 36, 55). The data herein demonstrate that AEA, but not 2-AG, levels were reduced in dam-paired, but not isolated, pups that underwent nociceptive testing. The decrease in AEA was not associated with a change in the expression of the metabolic enzyme FAAH, although activity of the enzyme may be altered. Recent data from our laboratory has demonstrated that increasing AEA tone within subregions of the prefrontal cortex modulates inflammatory nociceptive responding only under conditions of stress (attenuates fear-conditioned analgesia) (36). Thus a decrease in AEA levels in the PFC may mediate stress- and/or distraction-induced analgesia. However, given the time at which the tissues were collected, it is possible and even likely that the decrease in AEA reflects an earlier increase in release, mobilisation and utilisation. Accordingly, Ford et al demonstrated that distraction-induced analgesia was associated with an increase in AEA (and 2-AG) levels and could be attenuated by CB<sub>1</sub> antagonism (54). Thus while additional studies are required to determine the precise mechanisms underlying the changes in nociceptive responding the presence or absence of the dam in juvenile rats, the data here suggest a possible role for AEA signalling in the PFC in mediating or modulating these effects. Interestingly both dam-paired and isolated juvenile rats that underwent nociceptive testing exhibited a decrease in CB<sub>2</sub> expression in the PFC. It is unknown if this effect is due to exposure to any one particular

nociceptive test, removal from the homecage during testing, or an effect of cumulative nociceptive testing over a 3hr period. CB<sub>2</sub> receptors are expressed on glia and discrete populations of neurons within the brain, and increasing data suggests an important role for CB<sub>2</sub> receptors in the mediation and modulation of pain (26). Accordingly, recent data from our laboratory has demonstrated that enhancing 2-AG tone within the PFC attenuates fear-conditioned analgesia via CB<sub>2</sub> receptor activation (35). However, the expression of CB<sub>2</sub> receptors are low under non-pathological conditions, which was confirmed in the current study (CB<sub>1</sub>: average CT = 21 vs CB<sub>2</sub> average CT = 30). Future studies will be required determine if the decrease in CB<sub>2</sub> receptor expression following nociceptive testing translates into a change in protein expression, the location of such changes (neurons and/or glia, discrete areas of the PFC) and the physiological significance.

## **Conclusions**

This study provides key insight into the effects of maternal presence vs acute isolation on nociceptive responding in juvenile female rat pups, effects dependent on the modality under investigation. The data also demonstrate that AEA levels are altered in a key brain region (PFC) involved in affect and nociception and thus provides further support for the ECS as a mediator and/or modulator of social support on nociceptive responding. This data contribute to our limited understanding of parent-child interactions during pain experiences, and may provide a framework for evaluating the role of the ECS in sociobehavioural responding during childhood painful experiences.

## **Author statement**

GOS, BMcG, LC, and MR were involved in the experimental design and writing of the manuscript. GOS, RH, AT, DK and MR conducted and analysed the experiments. All authors read and approved the manuscript prior to submission.

### **Author roles**

GOS, BMcG, LC, and MR were involved in the experimental design and writing of the manuscript. GOS, RH, AT, DK and MR conducted and analysed the experiments. All authors read and approved the manuscript prior to submission.

### **Declaration of interest**

None.

### **Acknowledgements**

The authors would like to thank Dr Edel Hughes and Mr Ambrose O'Halloran for their technical assistance. The authors gratefully acknowledge funding from the Hardiman Postgraduate Research Scholarship, the discipline of Physiology, and the Research Office, all at National University of Ireland, Galway. The funding sources did not have input into the study design, the collection, analysis and interpretation of the data, or the writing of the manuscript.

## References

1. Piira T, Sugiura T, Champion GD, Donnelly N, & Cole ASJ (2005) The role of parental presence in the context of children's medical procedures: a systematic review. *Child: care, health and development*, 31(2):233-243.
2. Schinkel MG, Chambers CT, Caes L, & Moon EC (2017) A Comparison of Maternal versus Paternal Nonverbal Behavior During Child Pain. *Pain Practice* 17(1):41-51.
3. Vervoort T, *et al.* (2011) Social modulation of facial pain display in high-catastrophizing children: An observational study in schoolchildren and their parents. *PAIN* 152(7):1591-1599.
4. Grunau RE, *et al.* (2009) Neonatal pain, parenting stress and interaction, in relation to cognitive and motor development at 8 and 18 months in preterm infants. *Pain* 143(1):138-146.
5. Caes L, *et al.* (2016) Personal distress and sympathy differentially influence health care professional and parents' estimation of child procedure-related pain. *Pain Medicine* 18(2):275-282.
6. Caes L, Vervoort T, Eccleston C, & Goubert L (2012) Parents who catastrophize about their child's pain prioritize attempts to control pain. *Pain* 153(8):1695-1701.
7. Filippa M, *et al.* (2019) Pain, parental involvement, and oxytocin in the neonatal intensive care unit. *Frontiers in psychology* 10:1-15.
8. Viveros MP, *et al.* (2009) Sex-dependent alterations in response to maternal deprivation in rats. *Psychoneuroendocrinology* 34((Suppl 1)):S217-S226.
9. Ellenbroek BA, Derks N, & Park HJ (2005) Early maternal deprivation retards neurodevelopment in Wistar rats. *Stress* 8(4):247-257.

10. Burke NN, Finn DP, McGuire BE, & Roche M (2017) Psychological stress in early life as a predisposing factor for the development of chronic pain: Clinical and preclinical evidence and neurobiological mechanisms. *J Neurosci Res* 95(6):1257-1270.
11. Vilela FC, Vieira JS, Giusti-Paiva A, & da Silva ML (2017) Experiencing early life maternal separation increases pain sensitivity in adult offspring. *International Journal of Developmental Neuroscience* 62:8-14.
12. Spear LP, Enters EK, Aswad MA, & Louzan M (1985) Drug and environmentally induced manipulations of the opiate and serotonergic systems alter nociception in neonatal rat pups. *Behavioral and Neural Biology* 44(1):1-22.
13. Kehoe P & Blass EM (1986a) Opioid-mediation of separation distress in 10-day-old rats: Reversal of stress with maternal stimuli. *Developmental Psychobiology* 19(4):385-398.
14. Kehoe P & Blass EM (1986b) Behaviorally functional opioid systems in infant rats: II. Evidence for pharmacological, physiological, and psychological mediation of pain and stress. *Behavioral neuroscience*, 100(5), 624. 100(5):624-630.
15. Nizhnikov ME, Kozlov AP, Kramskaya TA, Varlinskaya EI, & Spear NE (2014) Central effects of ethanol interact with endogenous mu-opioid activity to control isolation-induced analgesia in maternally separated infant rats. *Behavioural Brain Research* 260:119-130.
16. Kozlov AP, Nizhnikov ME, Kramskaya TA, Varlinskaya EI, & Spear NE (2013) Mu-opioid blockade reduces ethanol effects on intake and behavior of the infant rat during short-term but not long-term social isolation. *Pharmacology Biochemistry and Behavior* 103(4):773-782.
17. Kozlov AP, Nizhnikov ME, Varlinskaya EI, & Spear NE (2012) The role of social isolation in ethanol effects on the preweanling rat. *Behavioural Brain Research* 227(1):43-57.

18. Blass EM, Shide DJ, Zaw-Mon C, & Sorrentino J (1995) Mother as shield: Differential effects of contact and nursing on pain responsivity in infant rats: Evidence for nonopioid mediation. *Behavioral neuroscience* 109(2):342.
19. Walker C-D, Xu Z, Rochford J, & Johnston CC (2008) Naturally occurring variations in maternal care modulate the effects of repeated neonatal pain on behavioral sensitivity to thermal pain in the adult offspring. *Pain* 140(1):167-176.
20. Schneider P, *et al.* (2014) Adolescent peer-rejection persistently alters pain perception and CB1 receptor expression in female rats. *European Neuropsychopharmacology* 24(2):290-301.
21. Schneider P, *et al.* (2016) Adverse social experiences in adolescent rats result in enduring effects on social competence, pain sensitivity and endocannabinoid signaling. *Frontiers in behavioral neuroscience* 10:203-218.
22. D'Amato FR & Pavone F (1996) Reunion of Separated Sibling Mice: Neurobiological and Behavioral Aspects. *Neurobiology of Learning and Memory* 65(1):9-16.
23. D'Amato FR (1994) Physiological evidence for genetically mediated sibling recognition in mice. *Behavior Genetics* 24(6):493-496.
24. D'Amato FR & Pavone F (1993) Endogenous opioids: A proximate reward mechanism for kin selection? *Behavioral and Neural Biology* 60(1):79-83.
25. Marco EM, *et al.* (2011) Social encounter with a novel partner in adolescent rats: Activation of the central endocannabinoid system. *Behav. Brain Res.* 220(1):140-145.
26. Starowicz K & Finn DP (2017) Cannabinoids and Pain: Sites and Mechanisms of Action. *Adv Pharmacol* 80:437-475.
27. Corcoran L, Roche M, & Finn DP (2015) The Role of the Brain's Endocannabinoid System in Pain and Its Modulation by Stress. *Int Rev Neurobiol* 125:203-255.

28. Hill MN, Eiland L, Lee TTY, Hillard CJ, & McEwen BS (2019) Early life stress alters the developmental trajectory of corticolimbic endocannabinoid signaling in male rats. *Neuropharmacology* 146:154-162.
29. Marco EM, *et al.* (2014) Consequences of early life stress on the expression of endocannabinoid-related genes in the rat brain. *Behav Pharmacol* 25(5-6):547-556.
30. Vangopoulou C, *et al.* (2018) Effects of an early life experience on rat brain cannabinoid receptors in adolescence and adulthood. *IBRO Rep* 5:1-9.
31. Schneider P, Pätz M, Spanagel R, & Schneider M (2016) Adolescent social rejection alters pain processing in a CB1 receptor dependent manner. *European Neuropsychopharmacology* 26(7):1201-1212.
32. Trezza V, Baarendse PJ, & Vanderschuren LJ (2010) The pleasures of play: pharmacological insights into social reward mechanisms. *Trends in pharmacological sciences* 31(10):463-469.
33. Ong WY, Stohler CS, & Herr DR (2019) Role of the Prefrontal Cortex in Pain Processing. *Mol Neurobiol* 56(2):1137-1166.
34. Fuchs PN, Peng YB, Boyette-Davis JA, & Uhelski ML (2014) The anterior cingulate cortex and pain processing. *Front Integr Neurosci* 8:35.
35. Corcoran L, Mattimoe D, Roche M, & Finn DP (2020) Attenuation of fear-conditioned analgesia in rats by monoacylglycerol lipase inhibition in the anterior cingulate cortex: Potential role for CB2 receptors. *Br J Pharmacol* [Epub ahead of print].
36. Rea K, McGowan F, Corcoran L, Roche M, & Finn DP (2019) The prefrontal cortical endocannabinoid system modulates fear-pain interactions in a subregion-specific manner. *Br J Pharmacol* 176(10):1492-1505.
37. Hoot MR, *et al.* (2010) Chronic constriction injury reduces cannabinoid receptor 1 activity in the rostral anterior cingulate cortex of mice. *Brain Res* 1339:18-25.

38. Mogil JS & Chanda ML (2005) The case for the inclusion of female subjects in basic science studies of pain. *Pain* 117(1):1-5.
39. Paxinos GW, C (2006) *The rat Brain in Stereotaxic Coordinates* (Academic Press, Elsevier).
40. Kerr DM, Gilmartin A, & Roche M (2016) Pharmacological inhibition of fatty acid amide hydrolase attenuates social behavioural deficits in male rats prenatally exposed to valproic acid. *Pharmacol Res* 113(Pt A):228-235.
41. Burke NN, *et al.* (2010) Enhanced nociceptive responding in two rat models of depression is associated with alterations in monoamine levels in discrete brain regions. *Neuroscience* 171(4):1300-1313.
42. Flannery LE, Kerr DM, Finn DP, & Roche M (2018) FAAH inhibition attenuates TLR3-mediated hyperthermia, nociceptive- and anxiety-like behaviour in female rats. *Behav Brain Res* 353:11-20.
43. Burke NN, Kerr DM, Moriarty O, Finn DP, & Roche M (2014) Minocycline modulates neuropathic pain behaviour and cortical M1-M2 microglial gene expression in a rat model of depression. *Brain Behav Immun* 42:147-156.
44. Fitzgibbon M, Kerr DM, Henry RJ, Finn DP, & Roche M (2019) Endocannabinoid modulation of inflammatory hyperalgesia in the IFN-alpha mouse model of depression. *Brain Behav Immun* 82:372-381.
45. Watson GS, Sufka KJ, & Coderre TJ (1997) Optimal scoring strategies and weights for the formalin test in rats. *Pain* 70(1):53-58.
46. Fischer M, Carli G, Raboisson P, & Reeh P (2014) The interphase of the formalin test. *Pain* 155(3):511-521.
47. Flannery LE, Henry RJ, Kerr DM, Finn DP, & Roche M (2018) FAAH, but not MAGL, inhibition modulates acute TLR3-induced neuroimmune signaling in the rat, independent of sex. *J Neurosci Res* 96(6):989-1001.



48. Moore DS, McCabe GP, & Craig BA (2012) *Introduction to the practice of statistics* (W.H. Freeman, New York) 7th Ed.
49. Han RT, *et al.* (2016) Brief isolation changes nociceptive behaviors and compromises drug tests in mice. *Pain Practice* 16(6):749-757.
50. Butler RK & Finn DP (2009) Stress-induced analgesia. *Prog Neurobiol* 88(3):184-202.
51. Olango WM & Finn DP (2014) Neurobiology of stress-induced hyperalgesia. *Current topics in behavioral neurosciences* 20:251-280.
52. Ford GK, Moriarty O, McGuire BE, & Finn DP (2008) Investigating the effects of distracting stimuli on nociceptive behaviour and associated alterations in brain monoamines in rats. *Eur J Pain* 12(8):970-979.
53. Langford DJ, *et al.* (2011) Varying perceived social threat modulates pain behavior in male mice. *J Pain* 12(1):125-132.
54. Ford GK, *et al.* (2015) Involvement of the endocannabinoid system in attentional modulation of nociceptive behaviour in rats. *Eur J Pain* 19(8):1177-1185.
55. Okine BN, *et al.* (2016) N-palmitoylethanolamide in the anterior cingulate cortex attenuates inflammatory pain behaviour indirectly via a CB1 receptor-mediated mechanism. *Pain* 157(12):2687-2696.

**Table 1: Distance moved, rearing and grooming during habituation and formalin trial**

<b>Habituation (10 mins)</b>				
	<b>Dam-pup</b>	<b>Isolated</b>	<b>Sig.</b>	
<b>Distance moved (cm)</b>	1038 ± 60	868 ± 68	t(18)=1.89; <i>p</i> = 0.07	<i>ns</i>
<b>Rearing (s)</b>	95.45 ± 6.19	87.95 ± 14.93	t(18)=0.46; <i>p</i> = 0.65	<i>ns</i>
<b>Grooming (s)</b>	128.60 ± 11.11	117.23 ± 15.78	t(18)=0.59; <i>p</i> = 0.56	<i>ns</i>
<b>Formalin trial (60 mins)</b>				
	<b>Dam-pup</b>	<b>Isolated</b>	<b>Sig.</b>	
<b>Distance moved (cm)</b>	1523 ± 122	822 ± 73	t(16)=4.62, <i>p</i> = 0.001	***
<b>Rearing (s)</b>	69.17 ± 11.57	20.63 ± 7.69	t(16)=3.30, <i>p</i> = 0.004	**
<b>Grooming (s)</b>	60.60 ± 7.18	73.00 ± 13.50	t(16)=0.86; <i>p</i> = 0.40	<i>ns</i>

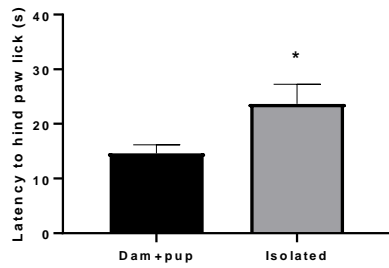
Data expressed as mean ± SEM (n=8-10 per group); \*\*\* *p* < 0.001; \*\* *p* < 0.01; *ns* = not significant

**Figure legends**

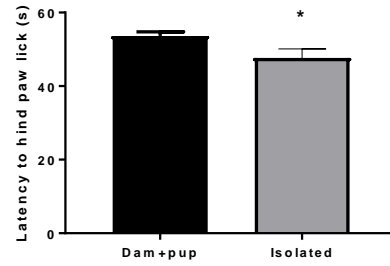
**Figure 1:** The effect of acute isolation vs maternal support on nociceptive responding of juvenile female pups. (a) Latency to respond in the hot plate test. (b) Latency to hind paw lick in the acetone drop test. (c-d) Mechanical withdrawal thresholds in the von Frey test. CPS over the (e) 60 minute formalin trial (5-minute bins) and (f) during the phase 1 and 2 of the formalin response. (g) Change in paw diameter following formalin administration. (h-i) Representative images of the experimental setup during the formalin test. Data expressed as mean  $\pm$  SEM (n= 8-10 per group). \*\*\*  $p < .001$ ; \*\*  $p < 0.01$ ; \*  $p < 0.05$  vs dam-paired pups. #represents phase 1 and 2 of the formalin test. CPS = composite pain score

■ Dam+pup      ■ Isolated

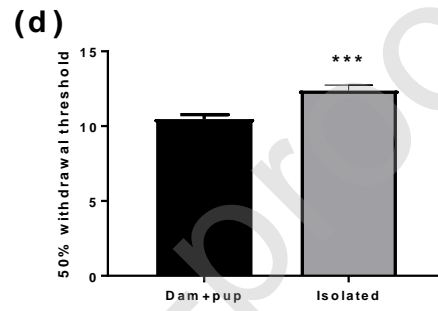
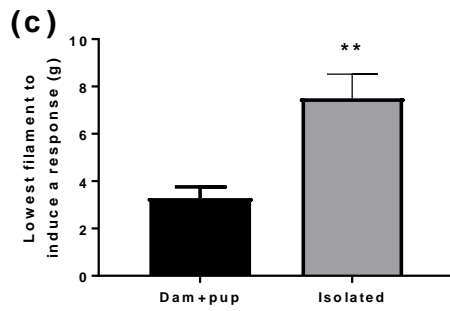
(a) Hot Plate Test



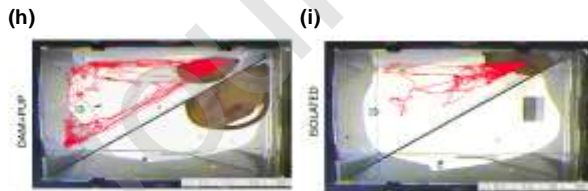
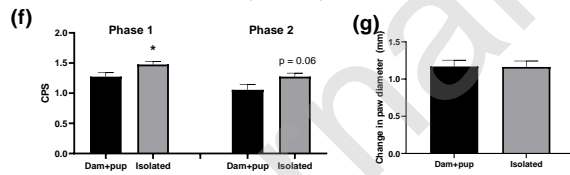
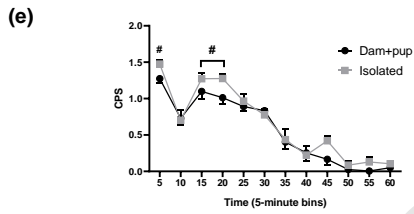
(b) Acetone Drop Test



Von Frey Test

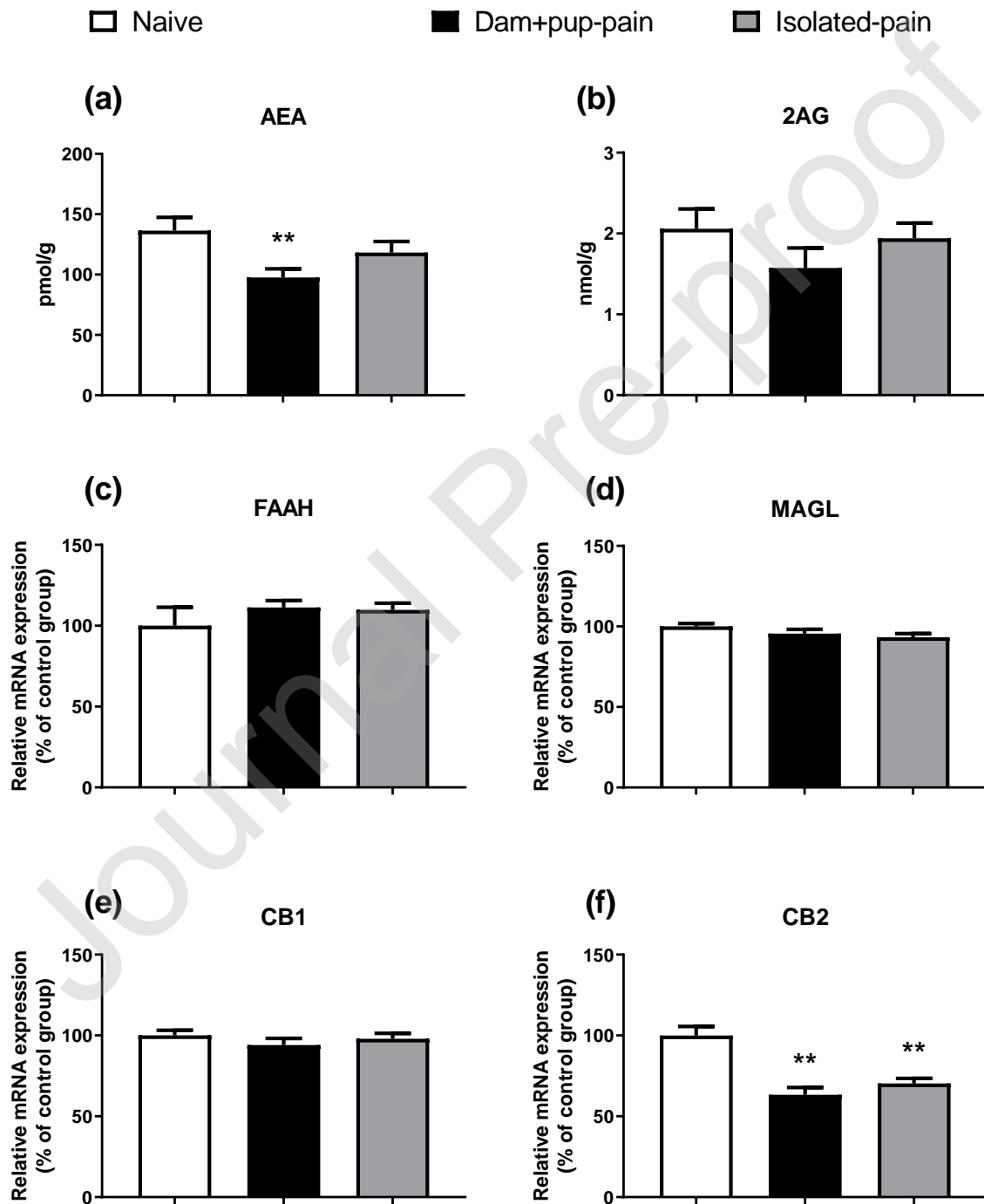
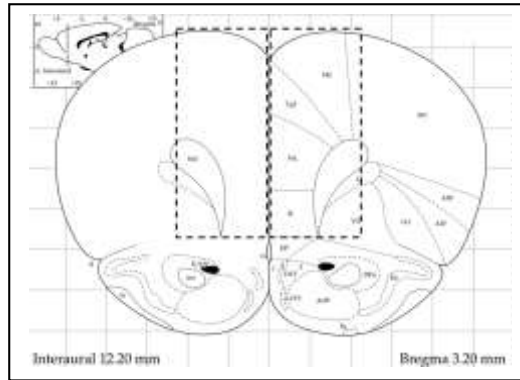


Formalin Test



**Figure 2:** The effect of intra-plantar formalin injection on endocannabinoid levels, enzyme and receptor expression in the PFC of juvenile female pups. Schematic of areas of PFC dissected for analysis. (a-b) AEA and 2-AG levels. (c-d) Expression of the catabolic enzymes FAAH and MAGL. (e-f) Expression of the cannabinoid receptors CB<sub>1</sub> and CB<sub>2</sub>. Data expressed as mean  $\pm$  SEM (N = 8-10). \*\*  $p < 0.01$  vs behaviourally-naïve control group.

Journal Pre-proof



Journal Pre-proof