

# Numerical optimisation of thermal comfort improvement for indoor environment with occupants and furniture

Kana Horikiri<sup>1</sup>, Yufeng Yao<sup>2\*</sup>, Jun Yao<sup>3</sup>

<sup>1</sup>Faculty of Science, Engineering and Computing, Kingston University, London SW15 3DW, United Kingdom

<sup>2</sup>Faculty of Environment and Technology, University of the West of England, Bristol BS16 1QY, United Kingdom

<sup>3</sup>School of Engineering, University of Lincoln, Brayford Pool, Lincoln LN6 7TS, United Kingdom

\*Corresponding author. Tel: +44 117 3287084

E-mail address: Yufeng.Yao@uwe.ac.uk

## Abstract

Indoor thermal environment of a 3-D ventilated room was studied by computational fluid dynamics to understand correlations between heat generation, ventilation velocity and thermal sensation indices. The existence of a thermal occupant was found to produce thermal plume approx 15 % stronger in magnitude than that from an unoccupied room. With second thermal occupant, there has further temperature increase of maximum 6.5%, equivalent to an increase of PPD value by 8.6%, for which occupants would normally feel uncomfortable. Thus, an increased flow ventilation rate ( $> 0.7 \text{ m/s}$ ) would be required, in order to keep the same thermal comfort level of the room.

Keywords: Computational fluid dynamics; indoor thermal comfort; PMV-PPD; ventilation velocity; heat generation.

# 1 Introduction

The transformation of energy market in transports, industries, appliances and buildings is challenging but compulsory in order to tackle global warming as well as other pressing environmental issues. In building sector alone, which is responsible for almost 40% of total energy consumption [1], the interests in energy-conscious and sustainable eco-building development have been increasingly grown to have better indoor environment and less energy consumption. As a result, there have been numerous indoor thermal environmental studies, for example indoor environment of transportation [2, 3], public spaces/buildings [4-6], workspaces/offices [7], whole building environment [8, 9], specific enclosed space [10], among many others. One common feature of these studies is about thermal comfort evaluation and assessment. In general, thermal comfort can be described by available models such as Standard Effective Temperature (SET) [11], comfort temperature [12] and Predicted Mean Vote (PMV) - Predicted Percentage of Dissatisfied (PPD) [13]. Of which, the Fanger's indices (i.e. the combined PMV and PPD) have been widely adopted as the so-called ISO 7730 standard [14], due to the well-correlated human factors and environmental parameters, and also the adaptability for many types of buildings, except for some very special ventilation types [15]. This method predicts both the thermal sensation and the thermal discomfort quantitatively, based on some key environmental parameters (e.g. air temperature, mean radiant temperature, air velocity and air humidity) and as well as the thermal balance of a human being (e.g. physical activity and clothing) obtained by either field measurements or numerical calculations. Furthermore, this model has been used to develop other thermal comfort sub-models [16-20], design and optimise building spaces under specific weather/climate conditions [21, 22], and study thermo-fluid characteristics in space/room without objective and human occupant [23, 24] or with objective and human occupant [25], respectively.

In addition to aforementioned factors, the problem of indoor thermal comfort is also sensitive to other physical parameters and their variations, in case of room environment with and without occupant. For example, the surface temperature of human body and room walls can cause the increase of radiation temperature [26]. The orientation and surface treatment of window glazing [27] and the occupant behaviour [28] also have important effects on energy performance and thermal balance of thermal comfort level. It was found that careful monitor and control of fluid inlet temperature of a heating radiator panel can maximise the indoor thermal comfort as well as minimise the energy consumption [24]. The PMV calculation, after considering all relevant environmental factors, has exhibited decreased levels of sensitivity, from very significant to air mean radiant temperature, down to less significant to air temperature and velocity and finally to insignificant to air humidity [29], respectively. Also the changes in outdoor climate and season will influence the indoor temperature via ventilation system and wall heat induction, thus affecting indoor thermal comfort [30].

To tackle this type of complex physical problem, it is not only technically challenging, but also very costly and time consuming by using traditional experimental measurements [15]. Simple correlation-based calculation often used by building industry provides another possible option but it is generally not accurate enough for a comprehensive evaluation [31]. Computational Fluid Dynamics (CFD) technique, as a novel numerical approach, has demonstrated its strong capability in reproducing and capturing the detailed information of complex fluid and heat transfer characteristics within an enclosed model room with or without heating sources [12, 23, 32]. With the advancement of numerical method and computational power, modern CFD technology can be used in obtaining real-time 3-D flow and thermal parameters at both the system and the component levels [32-35]. As the technology is growing rapidly, thanks to modern computer technology and architecture such

as GPU, it is now possible to carry out vast number of parametric studies as precursor numerical exercises and thus to integrate numerical modelling work with practical engineering design and analysis process for cost saving, durability and reduced time-scale from product design to market, for which it is almost impossible with physical experiment tests and measurements, due to extremely long preparation and construction time, and high operation and labour costs.

Building on previous success of validation and verification exercises of several benchmark test cases [36] and a ventilated model with a heat source [37] using a commercial CFD code ANSYS Fluent, present study further investigates the impact of indoor environment condition on thermal comfort level variation in a 3-D ventilated, furnished and occupied room. Detailed studies of flow and heat transfer characteristics and thermal comfort analysis will be carried out by increasing the complexity of flow and geometry features, such as different layout of furniture and the number of heat-generating sources (e.g. heat source, occupant(s) and TV), etc. For the thermal comfort optimisation, the study will focus on heat generation of heat source and ventilation rate on thermal sensation of occupants in the specified furniture layouts. The employed mathematical model and numerical scheme will be carefully tested and validated with results obtained to be compared with other already validated numerical predictions [12, 23].

## **2 Numerical Methods**

### **2.1 Airflow and heat transfer**

In the present study, a CFD programme ANSYS Fluent is used to calculate the airflow and thermal property distributions in a 3-D model room, using the governing continuity, momentum and energy equations. The Reynolds-Averaged Navier-Stokes (RANS) equations

are adopted together with the two-equation renormalized group RNG  $k-\varepsilon$  turbulence model, due to its capability of accurate prediction of turbulent indoor airflows at low-Reynolds number with and without flow swirl, as previous studies have shown good model performances in terms of accuracy, numerical stability and short computing time [36, 39]. In the energy equation, radiation heat generation from a heating source is also included through a Discrete Ordinates (DO) model already implemented in ANSYS Fluent software and it is applied with various angular discretisation and sub-iteration parameters to control solid angles in discretising each octant of the angular space and volume overhang on each surface respectively, so that radiative conditions can be applied to each individual faces and fluid elements within the computational domain. All the equations can be found in a recent publication [37].

An iterative solution method, SIMPLE algorithm [40], is employed to solve the nonlinearity of the momentum equation, the velocity-pressure coupling and the coupling between the flow momentum and the energy equations. For pressure Poisson equation, the solution applies weighted body-force under the assumption that the gradient of the difference between the pressure and body forces remains constant, especially in buoyancy calculations. Other equations such as momentum, energy and radiation are solved using the second-order numerical scheme. Double precisions are always defined to have better numerical accuracy and the residual target is set as  $10^{-12}$  to achieve a high level of convergence.

The problems are solved by finite volume numerical method on a uniform structured grid. A grid independent study is conducted using three successive grid resolutions of 200,000, 400,000 and 600,000 grid points, respectively. Due to higher Richardson number,  $Ri = Ra/(Re^2 Pr) > 1.4 \times 10^4$ , steady-state flow simulations could exhibit certain level of

numerical instabilities in terms of oscillating flow patterns during the convergence [41]. To mimic this effect, the results are averaged using three successive datasets taken from a complete oscillation cycle with limited temperature and velocity variations (i.e. within 1 °C and 0.05 m/s, respectively) at the monitoring points prescribed within the computational domain. The final ‘mean’ results are then compared with either experimental measurements or other available numerical data of corresponding scenarios for further analysis and assessment.

## 2.2 Indoor thermal comfort

The thermal comfort indices are evaluated by using Fanger’s comfort equations [23], i.e. predicted mean vote (PMV) and predicted percentage of dissatisfied (PPD), representing the thermal balance of a whole human body. The parameter PMV is an index representing the mean value of the voters of a large group of people in the same environment on a seven-point thermal sensation scale, i.e.  $-3 < PMV < +3$ , see Table 1. The parameter PPD is also an index representing the percentage of thermally dissatisfied persons among a large group of people. For thermal comfort requirement, the recommended PMV and PPD values are in a range of  $-0.5 < PMV < +0.5$  and  $PPD < 10\%$ , respectively. Following the work of Fanger [23], PMV and PPD values can be calculated by equations below. Note that more information and details can be found in reference papers [13, 14].

$$PMV = (0.03e^{-0.036M} + 0.028)\{(M - W) - 3.05 \times 10^{-3} \times [5733 - 6.99(M - W) - p_a] - 0.42 \times [(M - W) - 58.15] - 1.7 \times 10^{-5}M(5867 - p_a) - 0.0014M(34 - t_a) - 3.96 \times 10^{-8}f_{cl} \times [(t_{cl} + 273)^4 - (\bar{t}_r + 273)^4] - f_{cl}h_c(t_{cl} - t_a)\} \quad (1)$$

with

$$t_{cl} = 35.7 - 0.028(M - W) - c_{cl}\{3.96 \times 10^8 f_{cl} \times [(t_{cl} + 273)^4 - (\bar{t}_r + 273)^4] + f_{cl} h_c (t_{cl} - t_a)\} \quad , \quad (2)$$

$$h_c = \begin{cases} 2.38(t_{cl} - t_a)^{0.25} \\ 12.2\sqrt{v_{ar}} \end{cases} \text{ for } \begin{cases} 2.38(t_{cl} - t_a)^{0.25} > 12.1\sqrt{v_{ar}} \\ 2.38(t_{cl} - t_a)^{0.25} < 12.1\sqrt{v_{ar}} \end{cases} \quad , \quad (3)$$

$$f_{cl} = \begin{cases} 1.00 + 1.290I_{cl} \\ 1.05 + 0.645I_{cl} \end{cases} \text{ for } \begin{cases} I_{cl} \leq 0.078 \text{ (m}^2 \cdot \text{°C/W)} \\ I_{cl} > 0.078 \text{ (m}^2 \cdot \text{°C/W)} \end{cases} \quad , \quad (4)$$

where  $M$  is the metabolic rate ( $W/m^2$ ),  $W$  is the external work ( $W/m^2$ ) (close to zero for most activities),  $p_a$  is the partial water vapour pressure ( $Pa$ ),  $t_a$  is air temperature ( $^{\circ}C$ ),  $f_{cl}$  is the ratio of body's surface area (while clothed) over the surface area (while naked),  $t_{cl}$  is the surface temperature of clothing ( $^{\circ}C$ ),  $\bar{t}_r$  is the mean radiant temperature ( $^{\circ}C$ ),  $h_c$  is the convective heat transfer coefficient ( $W/m^2 \cdot ^{\circ}C$ ),  $v_{ar}$  is the relative air velocity ( $m/s$ ) (with reference to a human body) and  $I_{cl}$  is the thermal resistance of clothing ( $m^2 \cdot ^{\circ}C/W$ ).

The PPD index can be evaluated by the formula below,

$$PPD = 100 - 95 \times e^{-(0.03353 \times PMV^4 + 0.2179 \times PMV^2)} \quad , \quad (5)$$

Due to non-facilitated thermal sensation model in ANSYS Fluent software, the thermal comfort indices are calculated by an in-house FORTRAN code using Fluent CFD predicted flow field data such as air temperature, radiation temperature and air velocity at specific points, respectively and for conditions such as an occupant relaxed on a sofa (i.e. 1.0 *met*)

wearing the winter indoor clothes (*i. e.* 1.0 *clo*) with 50% of air humidity. Table 1 gives the relation between the PMV indices and the thermal sensation conditions.

Table 1  
Relationship between PMV and thermal sensation

PMV	Thermal sensation
+3	Hot
+2	Warm
+1	Slightly warm
0	Neutral
-1	Slightly cool
-2	Cool
-3	Cold

### 2.3 Physical parameters

The comfort temperature is another variable to describe the occupant's feeling of the thermal climate within a room environment, which considers the balance of radiation and convection heat transfer modes, and it can be used for results comparison with available data from other published data sources (see, e.g. [12, 23]).

$$T_{comfort} = \frac{T_{radiation} + T_{air} \sqrt{10} u}{1 + \sqrt{10} u} \quad , \quad (6)$$

where  $T_{comfort}$  is comfort temperature ( $K$ ),  $T_{radiation}$  is radiation temperature ( $K$ ) [42],  $T_{air}$  is air temperature ( $K$ ) and  $U$  is air velocity magnitude ( $m/s$ ). Radiation temperature is defined as

$$T_{radiation}^4 = \frac{1}{4\sigma} \int_0^{4\pi} I d\Omega \quad , \quad (7)$$



where  $\sigma$  is Stefan-Boltzmann constant ( $5.669 \times 10^{-8} \text{ W/m}^2\text{K}^4$ ),  $I$  is radiation intensity ( $\text{W/sr}$ ), and  $\Omega$  is solid angle ( $\text{sr}$ ).

To determine air velocity at a ventilation opening slot location based on either given ventilation rate ( $\text{m}^3/\text{s}$ ) or air supply rate ( $\text{L/s}$ ), following equations can be used.

$$\text{Air supply rate (L/s)} = \frac{\text{Air change rate (1/h)} \times \text{Room volume (m}^3) \times 1000 \text{ (L/m}^3)}{3600 \text{ (s/h)}} \quad , \quad (8)$$

$$\text{Air velocity (m/s)} = \frac{\text{Ventilation rate (m}^3/\text{s)}}{\text{Cross-sectional area of inlet opening (m}^2)} \quad . \quad (9)$$

### 3 Physical Problem

#### 3.1 Configuration of model room, furniture and occupants

The present study considers a 3-D model room in dimensions of  $4.8 \text{ m (L)} \times 2.6 \text{ m (H)} \times 2.4 \text{ m (W)}$  previously studied by Olesen *et al.* [38], Myhren and Holmberg [12] and Horikiri *et al.* [37], respectively, as seen in Figure 1a. This configuration includes a double panel radiator as a heat source, a glazed window, and a ventilation system (i.e. an inlet above the window for extracting cold fresh air, and an outlet on the opposite wall for exhausting warm air), respectively (denoted as model  $S_0$  thereafter). The detailed descriptions of installation location and boundary conditions can be found in reference paper [37]. The origin of the coordinate system is located at the mid-point of the intersection line between the floor and the inner wall surface with inlet slot and window along the spanwise direction, as shown in Figure 1a.

Analysis of the impact of occupied room on indoor thermal comfort is carried out by three different layouts/scenarios with furniture and/or occupants ( $S_1, S_2, S_3$ ) (see Figure 1b-1d), compared with the original empty model room layout/scenario  $S_0$ . The furniture considers a cabinet (or a TV stand) with a TV at a fixed position, located at the middle of one side-wall opposite to the sofa, and two different types of sofa. A small sofa that has no armrest is located at the back wall, facing to the window wall (denoted as the layout  $S_1$ ) while a large sofa with armrest is located at the middle of one side-wall (denoted as the layout  $S_2$ ). In the layout  $S_3$ , two sofas are both included. All sofas and cabinet/TV-stand are attached to the walls, assuming that the gap between the walls and the non-heat generating furniture is so small that the local heat transfer and fluid pattern inside the gap space do not have significant influences on the domain of interest, i.e. the central space of the model room.

For further studies of heat generation effects, a box-shaped human being is introduced at the center of each sofa. An occupant with a small-shoulder ( $H_1$ ) is seated on the small sofa  $S_1$ , facing to the window wall, while another occupant with a large-shoulder ( $H_2$ ) is seated on the large sofa  $S_2$ , facing to the cabinet/TV-stand on the opposite side-wall. The bodies are seated along the sofa without gap/space and therefore the total height from the feet to the head is 1.3 m (i.e. 0.3 m as the height of the head, 0.6 m as the upper-body length from the shoulder to the seat, and a length of 0.55 m from the feet to knees with 0.15 m leg thickness, respectively), see Figure 2. The details of dimensions and the locations of furniture and human being can be found in Table 2.

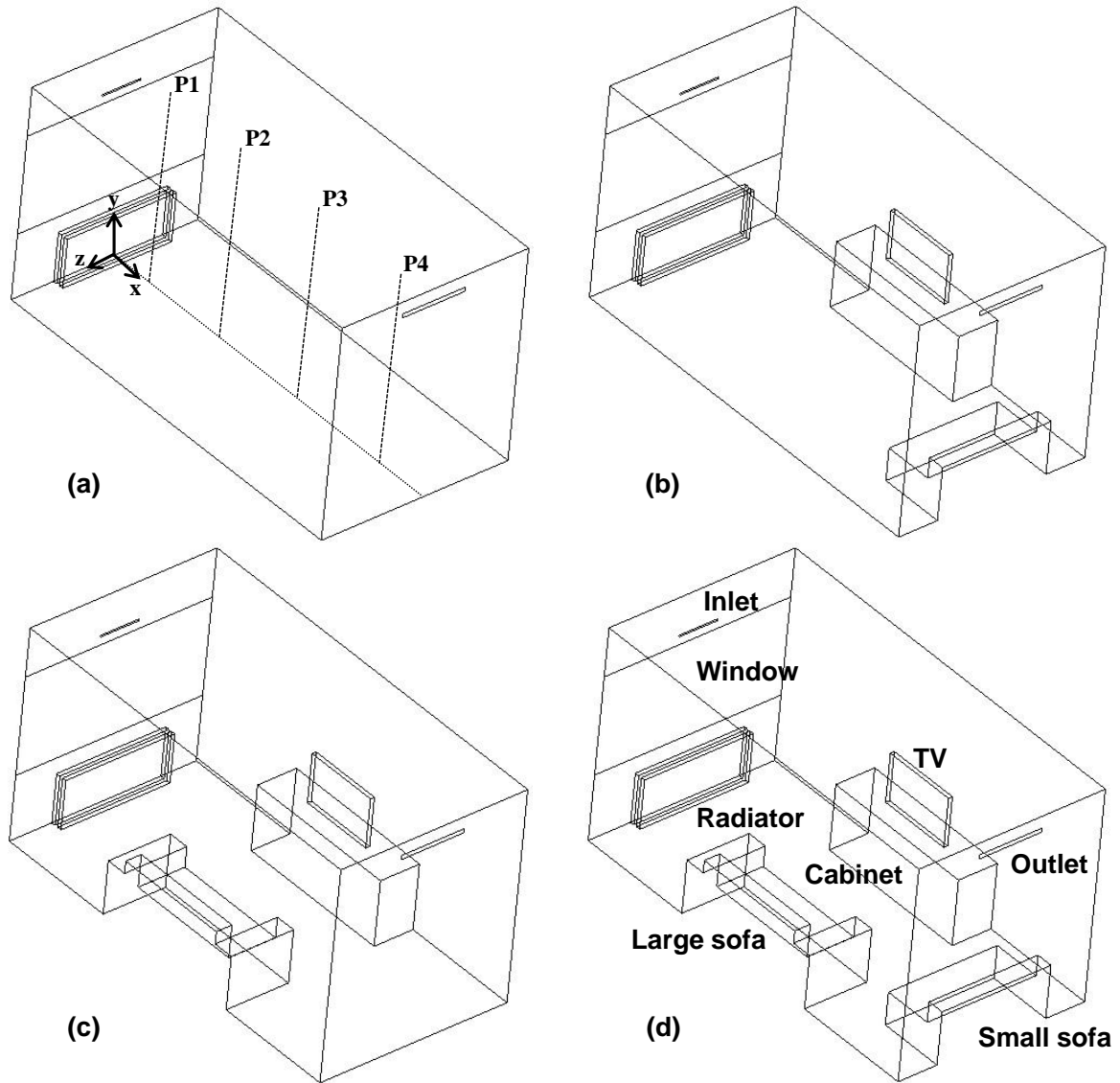


Figure 1: Schematic views of four 3-D configurations of furniture with monitoring four lines ( $P1 - P4$ ): (a) layout  $S_0$ , (b) layout  $S_1$ , (c) layout  $S_2$ , (d) layout  $S_3$ .

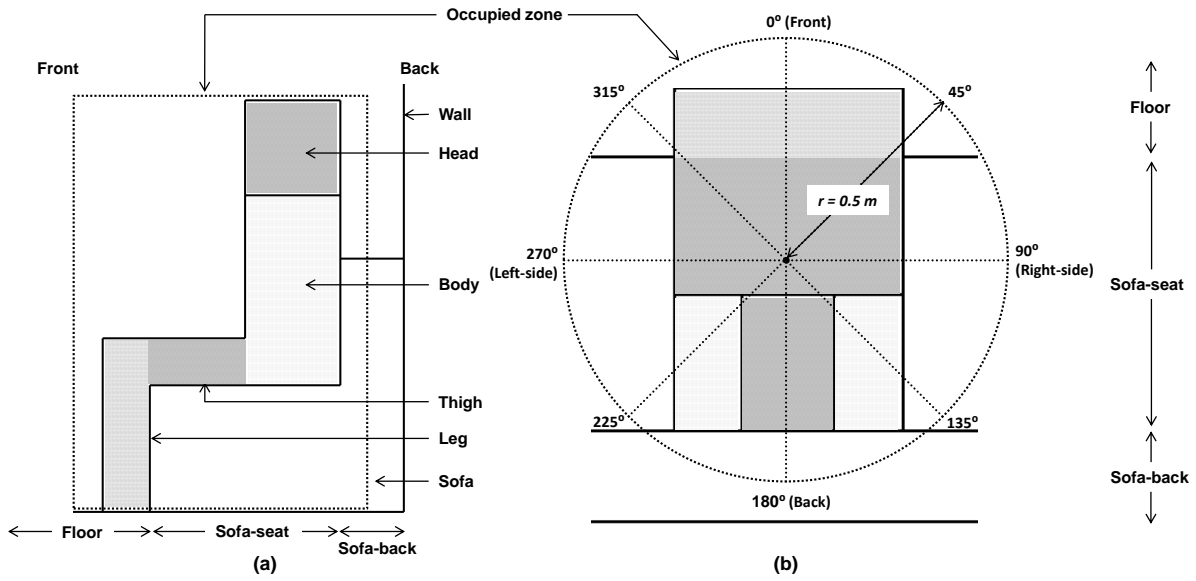


Figure 2: Detail of seated occupant's segments (a) side-view, and occupied zone with eight measuring points (b) top-view.

Table 2  
Specifications of furniture and human body

	Size ( $L \times H \times W$ ) ( $m^3$ )	Position in room
Sofa $S_1$	Outline: $1.4 \times 0.8 \times 0.8$ , Seat: $1.4 \times 0.4 \times 0.6$	Mid-position along the back-wall
Sofa $S_2$	Outline: $1.9 \times 0.8 \times 0.8$ , Arms: $0.8 \times 0.25 \times 0.25$ , Seat: $1.4 \times 0.4 \times 0.6$	Mid-position along the side-wall
Cabinet	$1.9 \times 0.8 \times 0.8$	Mid-position along opposite side-wall of the sofa
TV	$0.9 \times 0.6 \times 0.5$	Centre/top of cabinet
Human $H_1$	Body: $0.5 \times 0.6 \times 0.3$ , Head: $0.2 \times 0.3 \times 0.3$ , Thigh & leg: $0.5 \times 0.55 \times 0.15$	Seating at centre of sofa $S_1$ /no gap to sofa surface
Human $H_2$	Body: $0.6 \times 0.6 \times 0.3$ , Head: $0.2 \times 0.3 \times 0.3$ , Thigh & leg: $0.6 \times 0.55 \times 0.15$	Seating at centre of sofa $S_2$ /no gap to sofa surface

### 3.2 Boundary conditions

Table 3 lists boundary conditions for the baseline case  $S_0$ , same as those previously defined and used in a published paper [12] and also for other three cases in the present study (i.e.

layouts  $S_1, S_2$  and  $S_3$ ). The plastic-made TV has a thermal conductivity value of  $0.2 \text{ W/m.K}$  and it generates a constant heat of  $2000 \text{ W/m}^3$  for “on-mode” and non-heat generation for “off-mode”, respectively. A  $1.30 \text{ m}$ -height human being in a seated condition has a mean surface temperature of a human body of  $31 \text{ }^\circ\text{C}$  in a relax mode, equivalent to constantly releasing  $75 - 85 \text{ W}$  heat from total body volume of  $0.18 - 0.20 \text{ m}^3$  [43-45]. The radiator panels also have a constant heat generation to maintain the near constant volume temperature of the panel around  $40 - 42 \text{ }^\circ\text{C}$  in each case.

Present study uses the same thermo-physical properties of the fluid (air) as that of previous investigation [12]. Due to very low speed of incoming cold airflow, incompressible flow assumption is used together with a Prandtl number  $Pr = 0.7$ . Based on physical condition of the heat source considered, i.e.  $Gr/Re^2 \gg 1$ , and  $Re_{inlet} > 700$ , where  $Gr$  is Grashof number,  $Re$  is Reynolds number, the heat transfer due to natural convection mode will play a major role in the heat transfer process, compared to that of forced convection mode. The corresponding Rayleigh number ( $Ra$ ) is  $Ra = 10^8$ . The initial indoor temperature is set to be  $16 \text{ }^\circ\text{C}$  based on an ambient room condition.

Table 3  
Boundary conditions

Inlet	Uniform & constant, $T_{air} = -5 \text{ }^\circ\text{C}$ and $U_{air} = 0.7 \text{ m/s}$
Outlet	Naturally outflow
Window	Uniform & constant temperature, $T_{window} = 14 \text{ }^\circ\text{C}$
Walls	A wall exposed to external environment, $U\text{-value} = 0.3 \text{ W/m}^2.K$ Other walls: Adiabatic
Radiator	Constant heat generation to keep $40 - 42 \text{ }^\circ\text{C}$
TV	Constant heat generation $2000 \text{ W/m}^3$ for “on-mode”
Humans	Constant body temperature $31 \text{ }^\circ\text{C}$
Sofa	Non-heat generating furniture, Adiabatic
Cabinet	Non-heat generating furniture, Adiabatic

### 3.3 Monitoring points

In order to compare results from present study with those available thermal comfort data obtained by previous experimental and numerical studies [12, 38], several monitoring points/lines are inserted at four streamwise locations of  $P1, P2, P3, P4$ , respectively in the mid-plane throughout the domain height, with a distance of  $x = 0.6\text{ m}$ ,  $x = 1.8\text{ m}$ ,  $x = 3.6\text{ m}$  and  $x = 4.2\text{ m}$  from the coordinate origin, see Figure 1a. During data analysis such as PMV and PPD values of thermal comfort conditions for occupant in a relaxing mode on the sofas, the area surrounding the seated occupant is considered using a cylindrical shape with a  $0.5\text{ m}$  radius of circle from the centre of seated human beings, from the floor to the  $1.3\text{ m}$  level (i.e. the top of the head), so-called “occupied zone”, see Figure 2. The measurements are taken at eight points across the occupant’s body (see Figure 2b) at four vertical positions from the floor to the ceiling, i.e.  $Y = 0.1\text{ m}$  (ankle level),  $0.5\text{ m}$  (knee level),  $1.1\text{ m}$  (shoulder level) and  $1.3\text{ m}$  (head level), respectively.

### 3.4 Description of case studies

One aim of present study is to have better understanding of heat transfer in furnished and occupied room and hence to improve indoor thermal comfort of the occupants. A total of three different room layouts ( $S_1, S_2$  and  $S_3$ , see Figure 1) are studied with maximum three different heat transfer modes by introducing corresponding energy sources (e.g. radiator, occupant(s) and TV) that are designed to incrementally increase the complexity of geometry features. Table 4 shows the presence of heat source(s) in each case; i.e. Case 1 has only one radiator in a furnished room, Case 2 has occupant(s) relaxing on a sofa without TV and Case 3 has occupant seated on a sofa, watching a TV.

Table 4  
Case study with heat generation source

	Radiator	Occupant(s)	TV
Case 1 (radiator study)	√	×	×
Case 2 (thermal human study)	√	√	×
Case 3 (heat-generating TV study)	√	√	√

## 4 Validation

Validation study of heat transfer and thermal comfort in a 3-D empty model room has been carried out by performing steady RANS computations using ANSYS Fluent software for indoor thermal comfort temperature prediction, and thermal index calculations using an in-house FORTRAN code based on the Fanger's PPD index evaluation [14], respectively. A configuration previously studied by other researchers [12, 23] has been used to compare comfort temperature predictions, whereas the accuracy of predicted PPD magnitude has been analysed for different sizes of single-panel radiator and ventilation system in the computational domain. The obtained results are compared with available numerical predictions from another commercially available numerical code FloVENT on a streamwise mid-plane and at four monitoring lines ( $P1 - P4$ ) [12, 23].

Figure 3 shows comparison of predicted comfort temperature and PPD index profiles at four monitoring locations with available published data [12, 23]. It is clear that reasonably good agreements between two predicted values have been achieved in terms of profile shape variation and pattern, except for the location of  $P1$ , with maximum differences within a small range of  $\pm 0.5$  °C and +2.5 %. The comfort temperature increases at three downstream locations  $P2 - P4$  as the domain height increases. At location  $P1$ , the comfort temperature decrease in the upper part of the domain ( $0.6\text{ m} < y < 1.8\text{ m}$ ) are possibly caused by the influence of nearby low temperature glazing window and the cold jet stream. Compared with

that of FloVENT, the present comfort temperature profiles have shown a slight over-prediction throughout the domain height, especially in the region below  $y = 1.1\text{m}$  in height. The PPD calculations shown in Figure 3 indicate a similar trend as FloVENT [23] that thermal comfort level increases whilst towards the ceiling. Some over-predictions in present results at locations  $P2 - P4$  may be due to larger amount of heat transfer from the double-panel heat source, causing higher air temperature, radiation temperature and air velocity. With the same reasons, the calculated average PPD value at each location is approximately 3.5 % higher than that of experimental data [38]. The difference in the PPD distributions between two sets of prediction data is also recognisable at the location  $P1$  where there exists a strong thermal flow mixing between a cold jet stream from the inlet slot and a warm air stream from the heat source beneath it. More results validation against available test data [12, 38, 39] can be found in a recent publication by present authors [37], using the same mathematical model and numerical scheme.

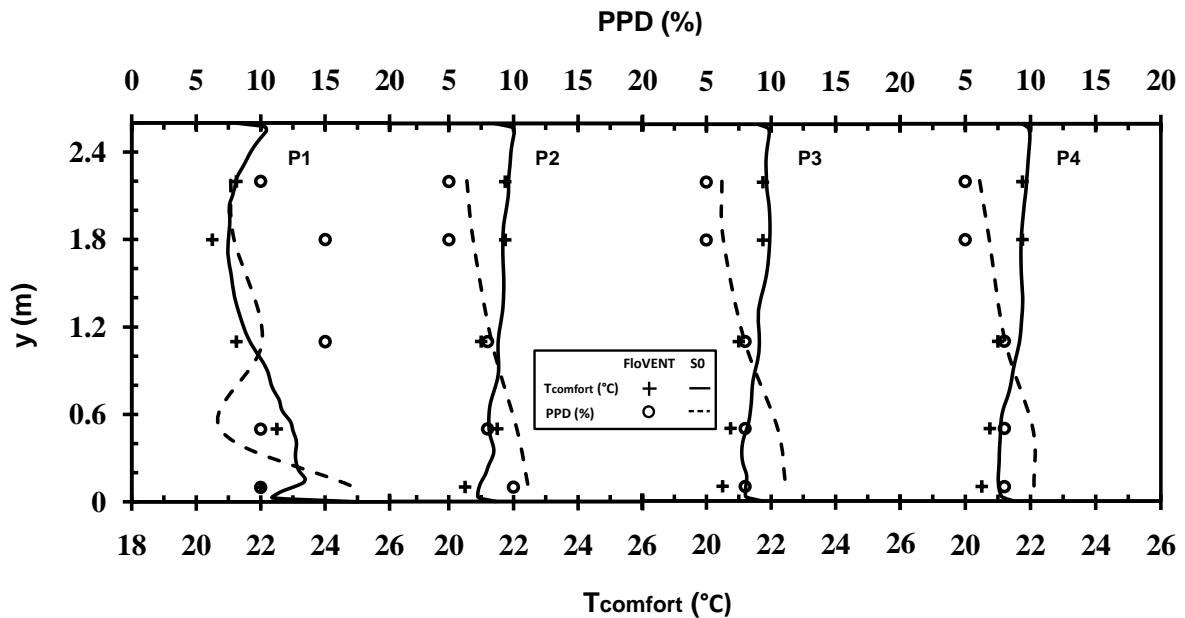


Figure 3: Comparison of comfort temperature and PPD profiles at four monitoring locations ( $P1 - P4$ ) in an empty room between present study and published FloVENT results [12, 23].



## 5 Results and Discussion

After results validation of a 3-D empty model room against other published data, simulations continue with three proposed case studies described in Table 4. The computational results of each study are first presented in terms of comfort temperature, followed by predicted mean vote (PMV) and predicted percentage of dissatisfied (PPD) values. A comparison of present results with other numerical data [12] and previous already validated numerical results in an unfurnished model room [37] is also presented and discussed.

### 5.1 Case 1: Effect of furniture arrangement (without heat generation)

Figure 4 gives three-dimensional velocity magnitude distributions for an iso-surface of  $> 0.1 \text{ m/s}$ , coloured with the  $x$ -velocity ( $u$ ) contours in a range of  $-0.1 \text{ m/s}$  to  $0.1 \text{ m/s}$  for all four layouts ( $S_0 - S_3$ ). It can be seen that velocity at  $0.1 \text{ m/s}$  and higher are clearly visible along the surfaces of floor, ceiling and around the furniture. Due to the fact that the furniture is located too close to the main stream path from the inlet, it is regarded as obstacle along the flow path, causing the shear flow with high velocity gradients at the edges of the furniture and in the nearby regions, that further leading to re-circulation flows in anti-clockwise direction in the lower space between the window wall and the furniture.

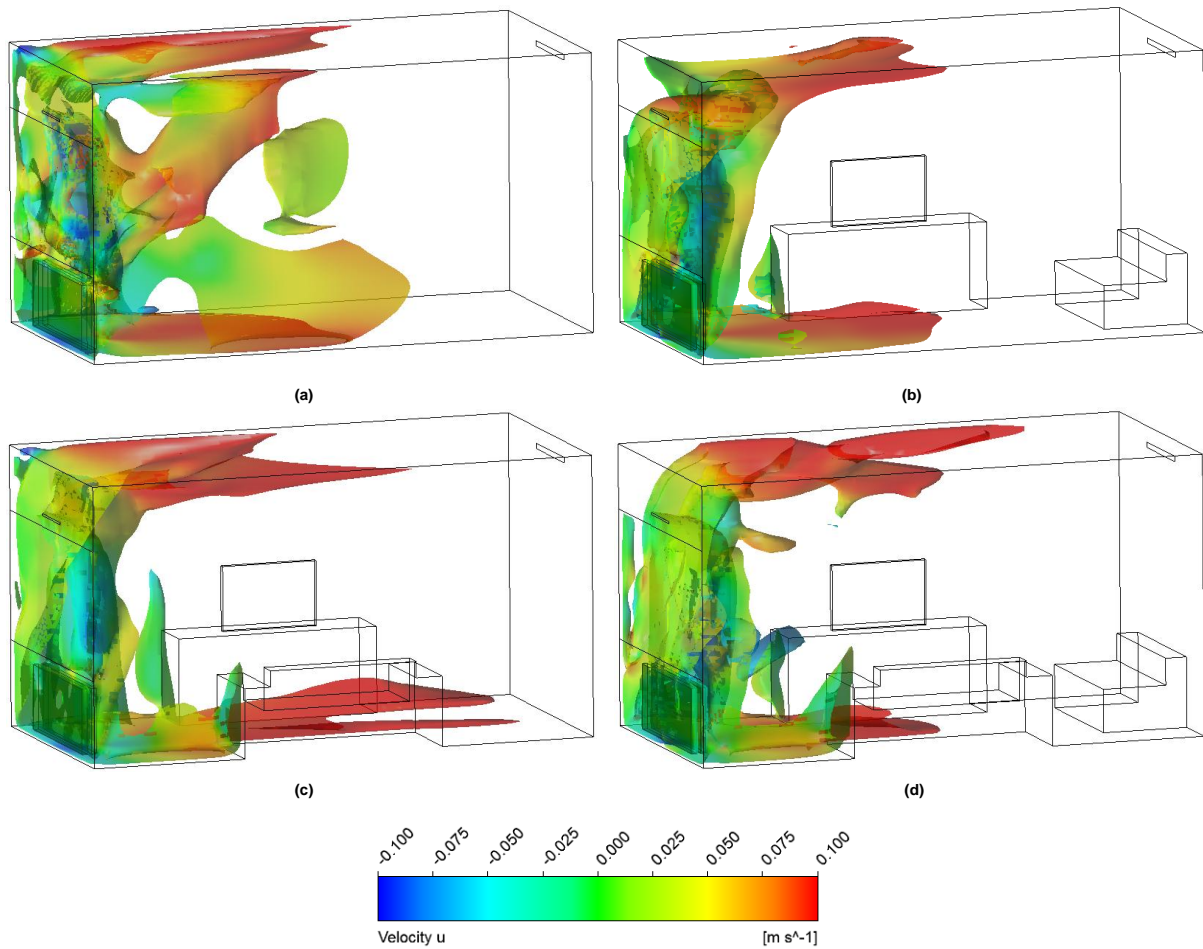


Figure 4: Velocity magnitude iso-surface of 0.1  $m/s$  coloured with  $x$ -velocity ( $u$ ) contours for four room layouts: (a)  $S_0$ , (b)  $S_1$ , (c)  $S_2$ , (d)  $S_3$ .

Figure 5 shows comfort temperature distributions at four monitoring locations  $P1 - P4$  throughout the domain height for three room layouts with sofa ( $S_1 - S_3$ ), compared with other numerical results of FloVENT [12] and Fluent for an empty room layout of ( $S_0$ ) [37]. It is clear that the predicted comfort temperature of furnished room layouts is generally in good agreement with that of an unfurnished room at three downstream locations  $P2 - P4$ . Note that temperature at the location  $P1$  where the maximum difference of comfort temperature is about 2 °C at a height of 1.5  $m$ , is highly affected by the cold jet stream from the inlet and the additional re-circulations mentioned beforehand would cause some rapid changes in the flow pattern and other features such as velocity, hence leading to the change of the comfort

temperature. There is little difference among four layouts in terms of the comfort temperature magnitude at other three monitoring locations  $P2 - P4$ , indicating that the fluid is less influenced by the existence of furniture in a streamwise plane at the centre ( $z = 0\text{ m}$ ). The predicted average air temperature in the fluid domain is around  $21.5\text{ }^\circ\text{C}$ , calculated using a formula  $\frac{1}{V} \int \phi dV = \frac{1}{V} \sum_{i=1}^n \phi_i |V_i|$ , which is consistent among all cases studied.

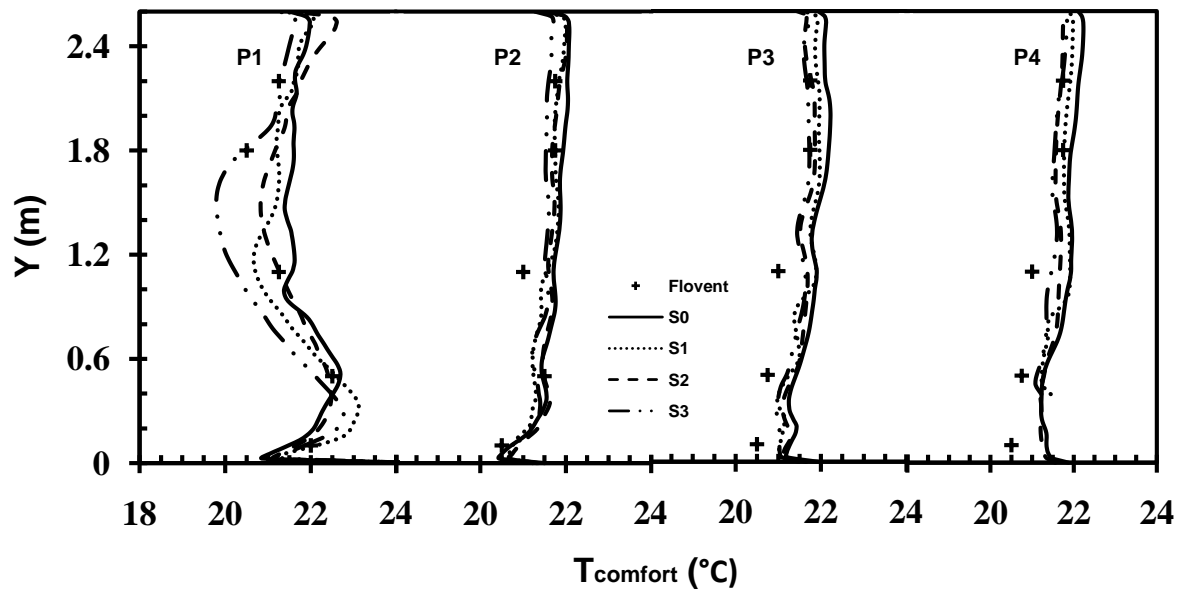


Figure 5: Comparison of comfort temperature profile at four monitoring locations ( $P1 - P4$ ) from four room layouts  $S_0 - S_4$  with that of FloVENT for an empty model room layout  $S_0$  [12].

Comparing to the heat transfer in the domain with non-heat generation furniture, the flow pattern is more influenced by the introduction of furniture and its location, in particular the development of flow re-circulations around the furniture. While the velocity magnitude is generally consistent throughout all the cases, it will be slightly higher in the vicinity of the furniture edges (see, e.g. Figure 4). It seems that the buoyancy strength is perhaps not

significantly affected by the presence of the furniture, indicating that the room temperature would be sustained at a similar level as that of an empty room layout  $S_0$ .

## 5.2 Case 2: Effect of heat transfer from occupant

Figure 6 shows predicted air temperature contours at a streamwise mid-plane ( $z = 0\text{ m}$ ) for three different layouts  $S_1 - S_3$  with sofa. It can be seen that air temperature increases with the height and the formation of thermal plume from human bodies can be clearly observed. The trends of temperature elevation and thermal plume from the human body were observed previously in various studies [46-48]. While increasing the number of occupant from one to two (i.e. layout  $S_3$ ), there is air temperature increase along the vertical height, causing a large size of thermal plume occurred in the fluid domain which is found more stable in the upper part of the flow domain. The air temperature gradient magnitudes at two vertical levels of  $0.1\text{ m}$  and  $1.1\text{ m}$  from the floor are predicted to be  $1.4\text{ }^\circ\text{C}$ ,  $1.3\text{ }^\circ\text{C}$  and  $0.7\text{ }^\circ\text{C}$ , respectively for three layouts  $S_1$ ,  $S_2$  and  $S_3$ , for which they satisfy the ISO thermal comfort standard [14]. The air temperature surrounding the human being  $H_1$  changes by maximum  $2\text{ }^\circ\text{C}$  between two layouts  $S_1$  and  $S_3$ . These results confirm that the presence of thermal occupant does have influences on indoor environment temperature, with increased volume-averaged temperature of  $1.7 - 3.2\text{ }^\circ\text{C}$  for three occupied layouts  $S_1 - S_3$ , compared to that of unoccupied room, i.e. case 1. The corresponding change in the comfort temperature increase is measured about  $8.7\% - 16.3\%$ . Among all three different room configurations, the averaged comfort temperature is in a range of  $23.3\text{ }^\circ\text{C} - 24.9\text{ }^\circ\text{C}$ , equivalent to  $5.9\% - 6.5\%$  in difference, compared with that of the layout  $S_3$  in which higher fluid (air) temperature is predicted. It is thus concluded that the increase of the number of thermal occupant would lead to the air temperature increase of maximum  $3.2\text{ }^\circ\text{C}$ .

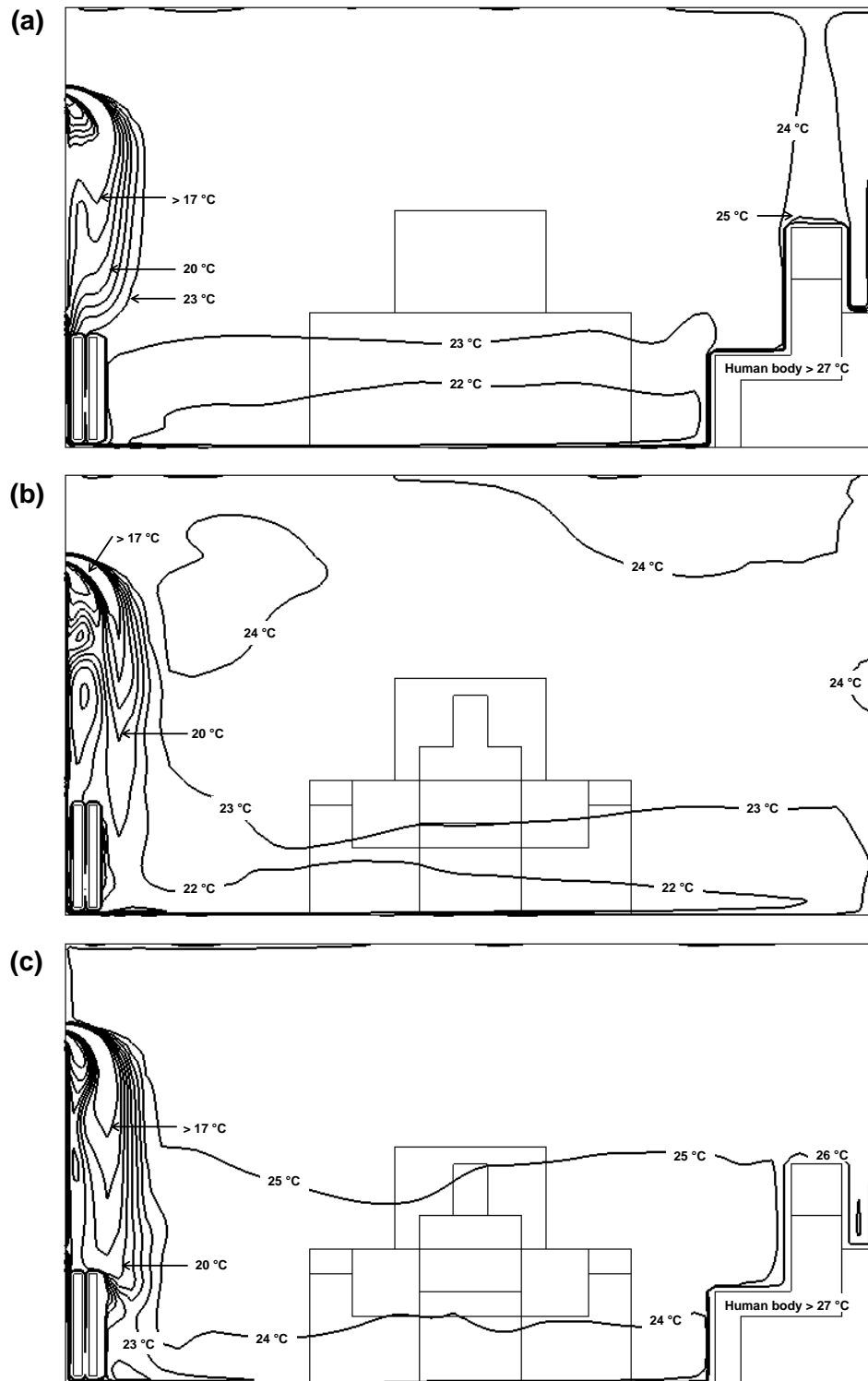
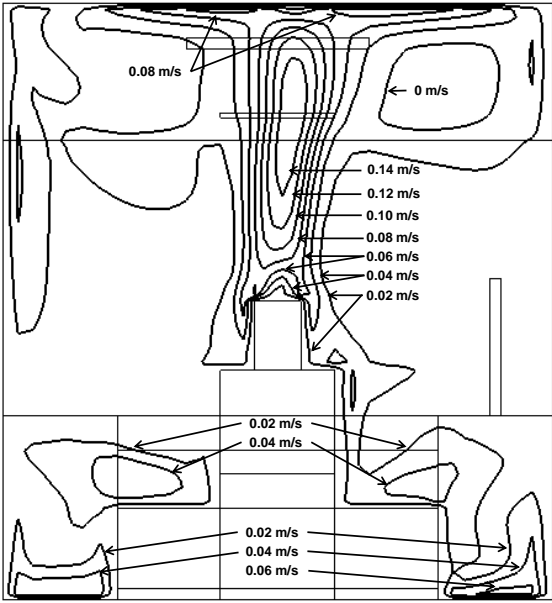
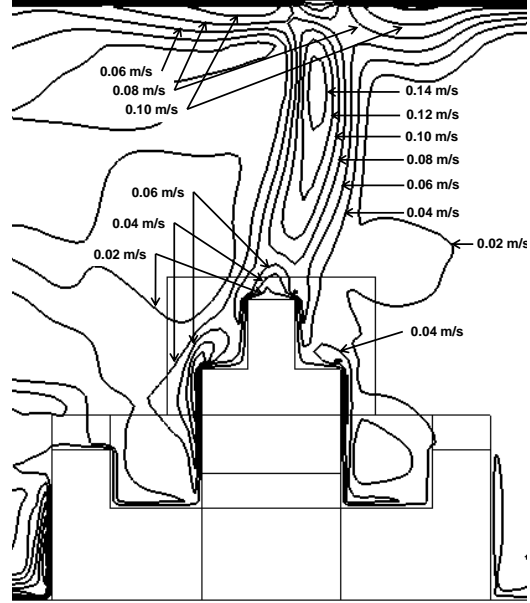


Figure 6: Air temperature distributions at a mid-streamwise plane ( $z = 0\text{ m}$ ) for three layouts with sofa: (a)  $S_1$ , (b)  $S_2$ , (c)  $S_3$ .

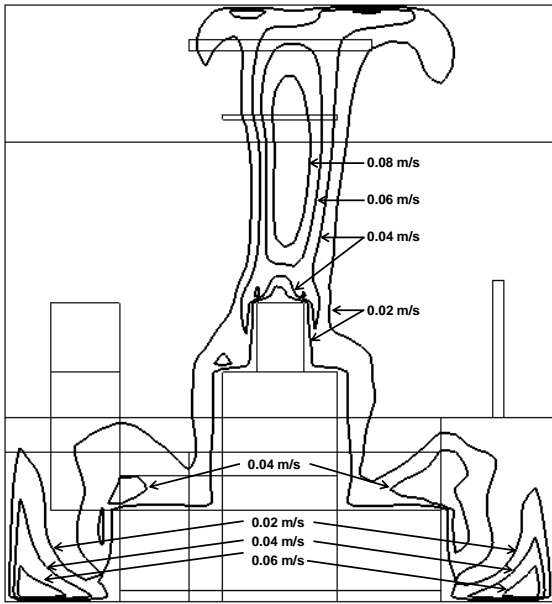
Figure 7 shows the distributions of velocity magnitude contours at a vertical plane throughout the mid-width of occupant's head, i.e.  $x = 4.45\text{ m}$  for human being  $H_1$  in Figure 7a, 7c and  $z = 0.85\text{ m}$  for human being  $H_2$  in Figure 7b, 7d, illustrating the formation and the development of thermal plume from each occupant's body. It is clear that the rising thermal plume is of significant strength with a maximum velocity above  $0.14\text{ m/s}$  for two layouts  $S_1$  and  $S_2$  and about  $0.10\text{ m/s}$  for the layout  $S_3$  with two occupants  $H_1, H_2$ , respectively. The reason for the difference in maximum velocity is probably due to the fact that stabilised thermal plume (that is normally quite consistent between two thermal human bodies) in the upper part of the flow domain in the layout  $S_3$ , would cause the decrease of the velocity magnitude. It is also noted that in the lower vertical regions of two sides of the small sofa, air velocity contours are quite similar between two layouts  $S_1$  and  $S_3$  with human being  $H_1$  (see, e.g. Figures 6a, 6c). Around the human being  $H_1$  and the sofa, the velocity contours are relatively symmetrical, while around the human being  $H_2$ , the flow pattern is more complex. This is mainly due to the location of the occupant, e.g. an occupant who is more close to the window wall is likely to be more affected by the inflow from the inlet and the thermal plume from the heat source (i.e. the radiator and the TV).



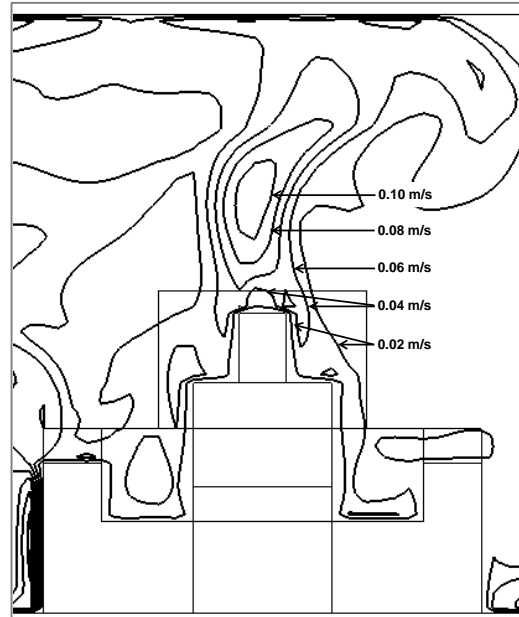
(a)



(b)



(c)



(d)

Figure 7: Velocity magnitude contours at the mid-width of occupant body for three layouts with sofa: (a)  $S_1H_1(x = 4.25 \text{ m})$ , (b)  $S_2H_2(z = 0.85 \text{ m})$ , (c)  $S_3H_1(x = 4.25 \text{ m})$ , (d)  $S_3H_2(z = 0.85 \text{ m})$ .

Figure 8 shows the PPD polar map around an occupant at four vertical locations  $Y = 0.1\text{ m}$ ,  $0.5\text{ m}$ ,  $1.1\text{ m}$  and  $1.3\text{ m}$  for each sofa layout, based on the CFD predicted air velocity, air temperature and radiation temperature at eight measuring points around the  $1\text{ m}$ -circle occupied zone (see Fig 2b). The PPD predictions are presented in red lines for the occupant  $H_1$  and in blue lines for the occupant  $H_2$ , and in solid line for two layouts  $S_1$  and  $S_2$  and in dashed line for third layout  $S_3$ , respectively. It is clear that the PPD distributions around an occupant in two sofa layouts  $S_1$  and  $S_2$  are resemblance throughout the domain heights, apart from a low position of  $Y = 0.5\text{ m}$ . The PPD magnitudes are also generally lower (i.e. below 10 %) for the two layouts  $S_1$  and  $S_2$ , compared to that of the third layout  $S_3$ . Note that small value of  $PPD < 10\%$  is highly recommended as desirable environment for occupied spaces in terms of thermal comfort requirements [14]. There are two peaks at positions  $135^\circ$  and  $225^\circ$  at  $Y = 0.5\text{ m}$  level (i.e. beside the hip) and one peak at position  $180^\circ$  at  $Y = 1.1\text{ m}$  (i.e. back of the neck) observed and their existences could be due to those locations too close to the surfaces of an occupant and other adiabatic surfaces (e.g. the sofa and the walls), thus largely affected by elevated local air temperature and radiation temperature and as well as the low velocity magnitude (almost zero), respectively. In the sofa layout  $S_3$ , both two occupants are having uncomfortable conditions throughout the vertical level in the domain, due to significant air temperature increases by  $1.5\text{ }^\circ\text{C}$  across the domain, compared with that of the volumetric fluid (air) temperature in two layouts  $S_1$  and  $S_2$ . The similar findings were previously reported by Lin *et al.* [48]. It can be seen in the layout  $S_3$  that there are large fluctuations in the PPD values for the occupant  $H_2$  at two lower vertical levels ( $Y = 0.1\text{ m}$ ,  $0.5\text{ m}$ ) whilst at two higher vertical levels ( $Y = 1.1\text{ m}$ ,  $1.3\text{ m}$ ), its PPD predictions are aligned with that of the occupant  $H_1$ . This is probably due to the fact that there is no big difference between two occupants in the upper part of the domain in terms of air temperature and airflow velocity. Comparing with that of Myhren's study of unfurnished and



unoccupied room [12], it was found that the predicted PPD values in present study increase with the vertical height of the domain, while Myhren's results showed the decrease trend with the height. This discrepancy may be contributed to the existence of occupants in the domain, creating different flow patterns and thermal plumes around them especially along the vertical direction.

As the occupant  $H_2$  is more close to the window along the streamwise direction, it is more likely affected by the mixing effects of the cold inflow from the inlet and the warm thermal plume from the underneath heat source (see Figure 6). This will cause non-uniform distributions of air temperature around the occupant  $H_2$  especially in the region of lower vertical levels, resulting in asymmetric PPD distributions in the front face (i.e. the orientation of  $0^\circ$ ). In contrary, the symmetrical PPD distributions are observed for the occupant  $H_1$  facing against the cold inflow and located at a further opposite wall to the window wall. Furthermore, for both location of occupants  $H_1$  and  $H_2$ , the temperature difference seems quite large (about  $1.6^\circ\text{C}$ ) in the region of lower vertical levels, and it becomes very small (about  $0.2^\circ\text{C}$ ) in the region of high vertical levels. There is little influence from the velocity field on the PPD calculation, since most of the velocity magnitude at the measuring points are very small, generally below  $0.05\text{ m/s}$ .

Based on above analysis of the effect of thermal human being in a relaxing mode on thermal comfort in the domain, it can be concluded that the presence of thermal occupant influences indoor environment temperature field with the formation and the development of thermal plume from the human body, increasing volume-averaged temperature by maximum 15 %, compared with that of unoccupied and empty model room case  $S_0$ . While having two occupants in the model room (e.g. the layout  $S_3$ ), air temperature in the entire domain and the

PPD magnitude would increase by 6.5 % and 8.6 %, respectively, compared with the lowest volume-averaged temperature from a single occupant of the layout  $S_1$ . This would lead to uncomfortable condition for the occupants. In case of a single occupant (e.g. the layout  $S_1$  or the layout  $S_2$ ), there is no major differences in terms of the level of thermal discomfort(i.e. PPD value). Furthermore, it is found that thermal comfort indices are very sensitive to the orientation of the incoming flow stream path towards the occupant, particularly at the lower vertical levels. A near symmetrical PPD distribution is obtained in the spanwise direction against the main inflow stream, while asymmetrical PPD distribution is observed in the streamwise direction against the main inflow stream as seen in Figure 7 and Figure 8.

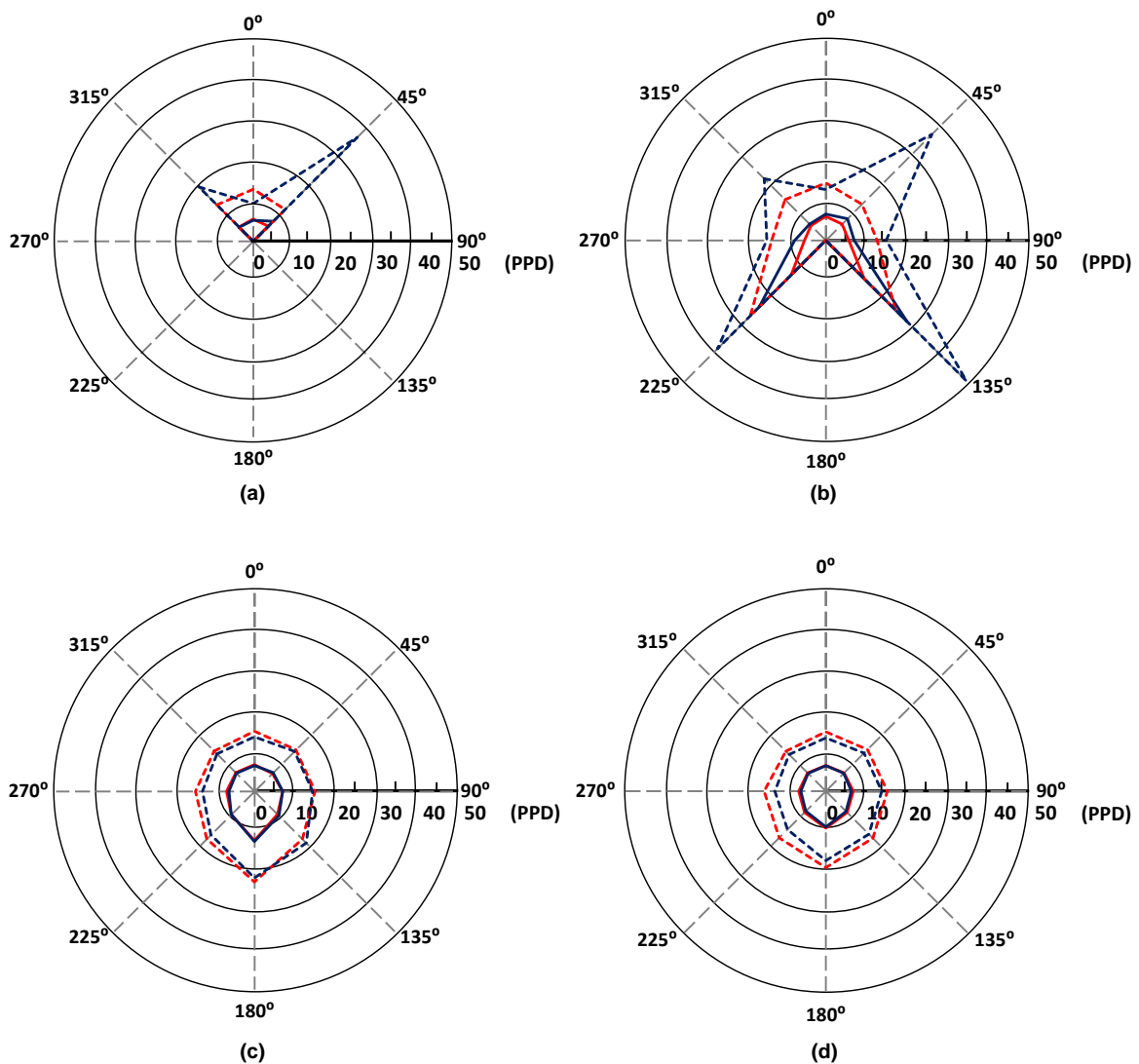


Figure 8: PPD predictions for seated occupants  $H_1$  (in red lines) and  $H_2$  (in blue lines) in different layouts with sofa ( $S_1$  and  $S_2$  in solid lines, while  $S_3$  in dashed line) at four vertical locations (a)  $Y = 0.1\text{ m}$ , (b)  $Y = 0.5\text{ m}$ , (c)  $Y = 1.1\text{ m}$  and (d)  $Y = 1.3\text{ m}$ , respectively.

### 5.3 Case 3: Effect of heat transfer from heat-generating furniture (TV)

Figure 9 shows the influence of heat-generating furniture such as a TV with “on-mode” on average PPD values around two occupants ( $H_1$  and  $H_2$ ) and the volume-average air temperature for three layouts with sofa ( $S_1$ ,  $S_2$  and  $S_3$ ), comparing with that of the same layout but with TV “off-mode”. Same as before, an average PPD value is calculated from eight measuring points surrounding an occupant throughout the four vertical levels  $Y = 0.1\text{ m}$ ,  $0.5\text{ m}$ ,  $1.1\text{ m}$  and  $1.3\text{ m}$ . It can be seen that for a TV of  $2000\text{ W/m}^3$  heat generation, the PPD value increases 4.7 – 5.4 % for the two layouts  $S_1$  and  $S_2$  and 11.1 – 11.5 % for the third layout  $S_3$ , compared to that with a TV “off-mode” scenario. These changes are mainly attributed to the increase of air temperature in the fluid domain approximately 4.4 – 5.2 %, due to the TV surface temperature of 31 – 33 °C. The predicted rate of PPD variation with temperature are in good agreement with published results of Lin *et al.* [48], e.g. 1 – 5 % for 1 °C temperature increase and 21 – 27 % for 3 °C temperature increase, respectively. In the meantime, thermal comfort level is mostly likely decreased while the volume-average air temperature is above 24 °C. From the polar map of PPD values obtained from these case studies (not shown here), the distribution shapes are quite similar to that of Figure 8, but the magnitudes are slightly higher than that of the acceptable indoor thermal condition.

It is thus concluded that the impact of a TV “on-mode” in an occupied and heated model room on thermal comfort around the occupants is not very significant, except having an increase of the PPD value around the occupants by maximum 5.4 % for one occupant and

11.5 % for two occupants. An addition of heat generating furniture does not affect significantly on the original heat transfer pattern obtained from the occupied room with TV “off-mode”, since there is little difference in the PPD distributions between the “on-mode” and “off-mode” of the TV.

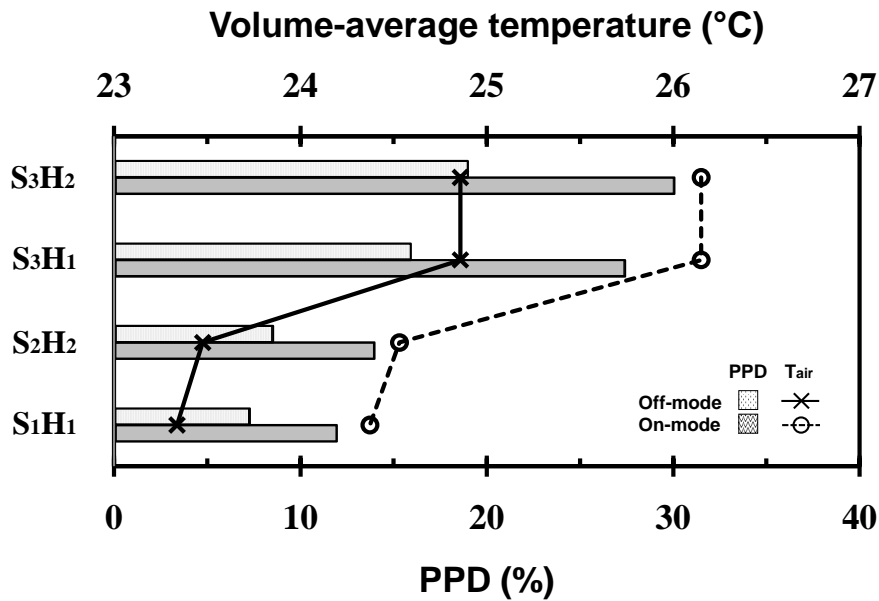


Figure 9: Comparison of average PPD values around occupants ( $H_1, H_2$ ) and volume-average air temperature for three layouts with sofa ( $S_1, S_2, S_3$ ) with TV “on-mode” and “off-mode”.

## 6 Numerical Optimisation of Thermal Comfort

The study considers the indoor environment numerical optimisation in order to achieve better thermal comfort for occupants without changing the room layout. Based on studies above, further investigation continues by varying the heat generation magnitude of the heat source and the ventilation flow rate, to understand their influences on the indoor temperature and the environment. The parameters considered are  $4000 < q_{rad}(W/m^3) < 4500$  for the heat generation of a heat source (i.e. radiator panels) and  $0.5 < U_{inlet}(m/s) < 1.0$  for ventilation air velocity. The heat generation of a heat source is kept at an intermediate heat level between

38 – 42 °C. The ventilation air velocity is also within the requirements of indoor thermal comfort in dwellings (e.g. a ventilation rate in the range of 0.5 – 1.0 *ACH* [49]). Note that *ACH* is air change per hour (i.e. air change rate) ( $1/h$ ), representing the circulation frequency that the air within an enclosed space is replaced. This is equivalent to an air supply rate of 4.2 – 8.3  $L/s$  in the model room of present study. Each case study applies to all three layouts with sofa  $S_1, S_2, S_3$ . Based on the results obtained from those case studies above, further two cases are conducted, i.e. heat generation study (case B) and ventilation velocity study (case C), see Table 5 for description. The results will be compared with case study above (i.e. section 4.3, case A:  $q_{rad} = 4500 W/m^3$ ,  $U_{inlet} = 0.7 m/s$  and  $q_{TV} = 2000 W/m^3$  with  $T_{human} = 31^\circ C$ ), in terms of the PPD and PMV values around the occupants, and fluid (air ) temperature, respectively.

Table 5  
Parametric case studies

	$q_{rad} (W/m^3)$	$U_{inlet} (m/s)$	$q_{TV} (W/m^3)$
Case A (Baseline study)	4500	0.7	2000
Case B (Heat generation study)	4000	0.7	2000
Case C (Ventilation velocity study)	4500	1.0	2000

Figure 10 shows the calculated PPD value around the occupant ( $H_1$  and/or  $H_2$ ) for case B and case C in three layouts with sofa at four vertical locations, compared with that of case A. The PPD predictions are presented in red lines for the occupant  $H_1$  and in blue lines for the occupant  $H_2$ , and in dash-dotted-dotted line for case A, solid line for case B and dashed line for case C, respectively. Results from two layouts  $S_1$  and  $S_2$  are shown on the left-hand-side column, while that of the layout  $S_3$  on the right-hand-side column in Figure 10. It is clear that both case B and case C successfully reduce the PPD level, compared with that of the previous baseline study (i.e. case A). Results from case C has shown slightly better thermal

environment than that of case B, but do not have significantly improvement. In case of single occupancy, i.e. the layout  $S_1$  or the layout  $S_2$ , the predicted PPD values are generally within 10 % variations throughout the vertical points, while in the layout  $S_3$ , only case C gives desirable values (i.e. the PPD value less than 10 %). Overall, the PPD value improves about 4.3 – 6.5 % for case B and 6.2 – 17.6% for case C in the layout  $S_3$ , compared with that of case A. The large reduction of the PPD index is probably due to lower air temperature in the fluid domain, as shown in Figure 11.

Although the PPD predictions have shown some positive improvements of thermal comfort, thermal sensation (e.g. the way of feeling thermal comfort by a human being) could be divergent at the location of the occupant. Figure 11 shows comparison of average PMV value and volume-average temperature for case B and case C for each occupant in the sofa layouts, compared with that of the baseline case A. It is clear that case A predicts the highest PMV values for all three cases while case C gives the lowest predictions. In both case A and case B, the occupants in the layout  $S_3$  could feel uncomfortable with the excess level of warm environment, (i.e.  $0.5 < PMV$ ). In contrary, the occupant in the layouts  $S_1$  and  $S_2$  in case C could feel slightly cooler or neutral, because of the predicted PMV indices of  $-0.12$  and  $0.04$ , respectively. It can also be seen that there are noticeable volume-average temperature differences between case A and case B (around  $0.8\text{ }^\circ\text{C}$ ) and between case A and case C (around  $2.6\text{ }^\circ\text{C}$ ), while the average temperature of case C is below  $24\text{ }^\circ\text{C}$  for all three layouts. Two cases (i.e. case A and case B in the layout  $S_3$ ) predicted the PPD value above 10 %, corresponding to the volume-average air temperature of greater than  $24\text{ }^\circ\text{C}$ . The impact of ventilation velocity increase on thermal comfort seems more significant, as the thermal transfer could be predominantly driven by higher ventilation rate from the inlet opening and

thus affects the entire indoor environment. This observation has been confirmed from all case studies with the occupants and the sofa layouts.

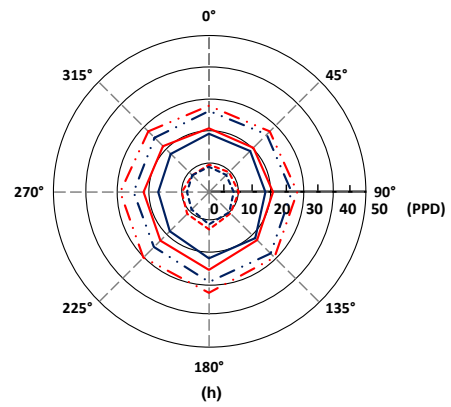
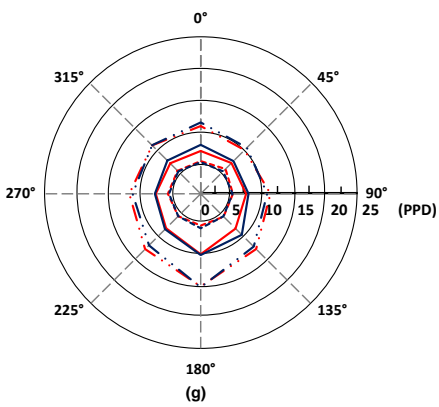
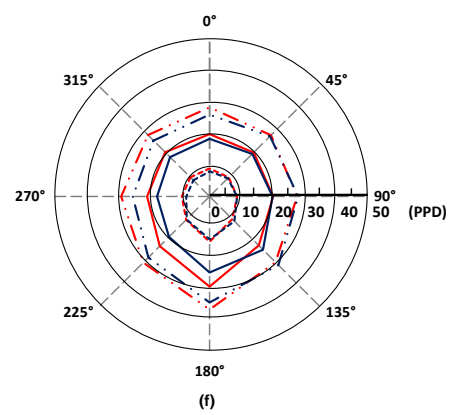
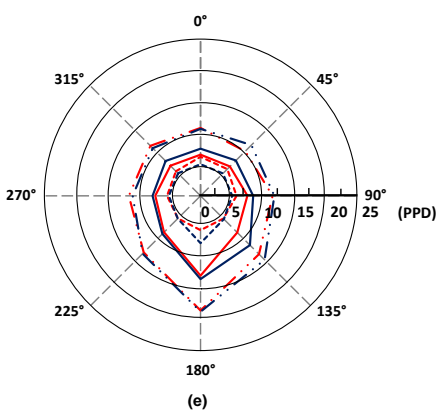
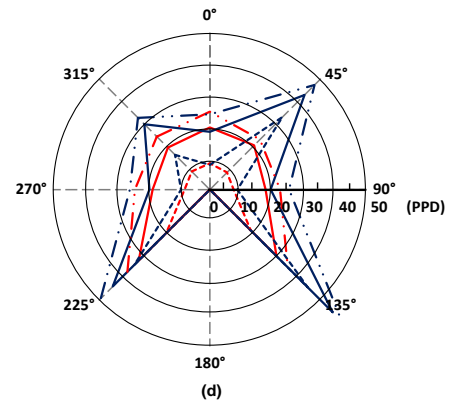
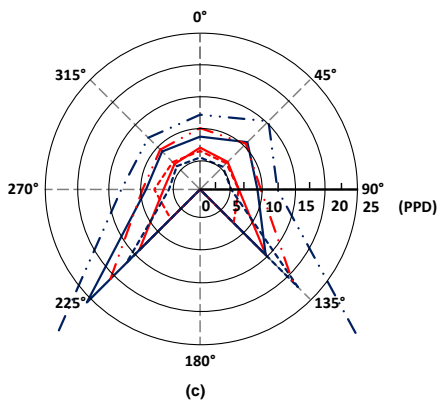
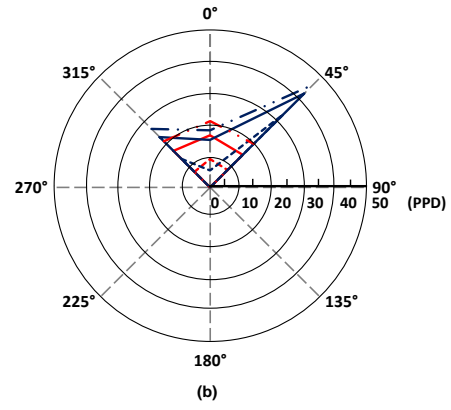
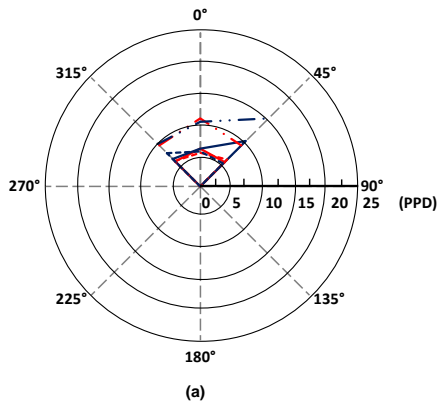




Figure 10: PPD predictions for seated occupants  $H_1$  (in red line) and  $H_2$  (in blue line) in three layouts with sofa ( $S_1$  and  $S_2$  (a, c, e, g) and  $S_3$  (b, d, f, h)) for case A (in dash-dotted-dotted lines), case B (in solid lines) and case C (in dashed lines) at four vertical locations (a, b)  $Y = 0.1 m$ , (c, d)  $Y = 0.5 m$ , (e, f)  $Y = 1.1 m$  and (g, h)  $Y = 1.3 m$ , respectively.

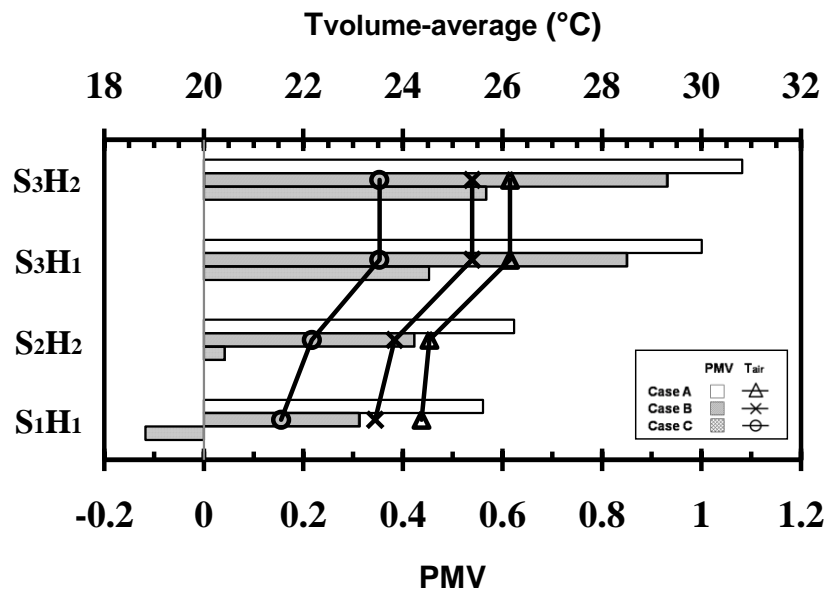


Figure 11: Comparison of average PMV values around occupants ( $H_1, H_2$ ) and volume-average air temperature from three layouts with sofa ( $S_1, S_2, S_3$ ) for cases A, B and C.

## 7 Conclusion

An investigation of indoor thermal environment in a 3-D furnished and occupied model room with localised heat source and window glazing has been carried out by computational fluid dynamics approach. The computational model was carefully validated against published data in literature for a 3-D empty model room [12, 23]. The model has been used to investigate the effect of furniture arrangement with and without heat generation and occupants in terms of indoor thermal comfort. After the investigation of the effect of non-heat generating furniture arrangement/location, the heat generation furniture and human beings are introduced to the computational domain. It was found that an existence of non-heat generating furniture in the

room and further addition of furniture could induce complicated flow re-circulations and high local air velocities around the edge of the furniture. There was little influence on room temperature and airflow buoyancy strength, compared with that of unfurnished room case. Further introduction of thermal occupant however did have significant impact on temperature field by the formation and the development of strong thermal plume, with increased air temperature by 15 %, compared with that of the unoccupied room case. In comparison, heat generation from a TV did not have important influence on the thermal comfort and heat transfer system. However, the number of occupant increase from one to two did increase air temperature in the fluid domain by 6.5 %, causing the PPD value increase by 8.6 % for which the occupants will normally feel uncomfortable in such a warm environment [48]. Furthermore, the location of the occupant is found very sensitive to the incoming flow stream path, e.g. the PPD distribution is symmetrical in the spanwise position but becomes asymmetrical in streamwise position. In a model room configuration as studied hereby, desirable indoor environment can be achieved under combined flow and thermal conditions of either  $q_{rad} = 4000 \text{ W/m}^3$  and  $U_{inlet} = 0.7 \text{ m/s}$  or  $q_{rad} = 4500 \text{ W/m}^3$  and  $U_{inlet} = 1.0 \text{ m/s}$ , both with a fixed  $q_{TV} = 2000 \text{ W/m}^3$  for a single occupancy sitting on a sofa watching TV. With more occupants introduced to this particular model room, it is highly recommended that higher ventilation flow rate ( $U_{inlet} > 0.7 \text{ m/s}$ ) would be required to achieve desirable thermal conditions with a radiator of heat generation rate in the range of  $4000 - 4500 \text{ W/m}^3$ . The findings would be useful for the built environment thermal engineers in design and optimisation of domestic rooms with non-heat or heat generation sources such as furniture, radiator and occupants to find a balance solution of both the thermal comfort and energy savings.

## **8 Acknowledgement**

The first author would like to acknowledge the sponsorship from Mitsubishi Electric R&D Europe MERCE-UK. (E&E10-CON256, E&E11-CON256, E&E12-CON256).

## 9 References

- [1] European Commission. EU energy policy for buildings after the recast, Unit D4 – Energy efficiency, DG TREN. Directorate General for Energy and Transport. [http://ec.europa.eu/energy/efficiency/doc/buildings/presentation\\_general\\_short.pdf](http://ec.europa.eu/energy/efficiency/doc/buildings/presentation_general_short.pdf) [accessed May 2014].
- [2] Alahmer A, Abdelhamid M, Omar M. Design for thermal sensation and comfort states in vehicles cabins. *Applied Thermal Engineering* 2012;36:126-140.
- [3] Li F, Liu J, Pei J, Lin CH, Chen Q. Experimental study of gaseous and particulate contaminants distribution in an aircraft cabin. *Atmospheric Environment* 2014;85:223-233.
- [4] Pourshaghaghay A, Omidvari M. Examination of thermal comfort in a hospital using PMV-PPD model. *Applied Ergonomics* 2012;43:1089-1095.
- [5] Alfano FRD, Ianniello E, Palella BI. PMV-PPD and acceptability in natural ventilated schools. *Building and Environment* 2013;67:129-137.
- [6] Barbhuiya S, Barbhuiya S. Thermal comfort and energy consumption in a UK educational building. *Building and Environment* 2013;68:1-11.
- [7] Hens HSLC. Thermal comfort in office buildings: Two case studies commented. *Building and Environment* 2009;44:1399-1408.
- [8] Bos MA, Love JA. A field study of thermal comfort with underfloor air distribution. *Building and Environment* 2013;69:233-240.
- [9] Park AH, Chung WJ, Yeo MS, Kim KW. Evaluation of the thermal performance of a Thermally Activated Building System (TABS) according to the thermal load in a residential building. *Energy and Buildings* 2014;73:69-82.
- [10] Jang MS, Koh CD, Moon IS. Review of thermal comfort design based on PMV/PPD in cabins of Korean maritime patrol vessels. *Building and Environment* 2007;42:55-61.
- [11] Gagge AP, Stolwijk JAJ, Nishi Y. An effective temperature scale based on a simple model of human physiological regulatory response. *ASHRAE Transactions* 1971;77:247-262.
- [12] Myhren JA, Holmberg S. Design considerations with ventilation-radiators: Comparisons to traditional two-panel radiators. *Energy and Buildings* 2009;41:92-100.
- [13] Fanger PO. *Thermal Comfort - Analysis and Applications in Environmental Engineering*. New York: McGraw-Hill Book Company, 1972.

- [14] ISO 13370, International standard, Thermal performance of buildings - Heat transfer via the ground - Calculation methods. 2007. Available at [www.iso.org](http://www.iso.org).
- [15] Deuble MP, de Dear RJ. Mixed-mode buildings: A double standard in occupants' comfort expectations. *Building and Environment* 2012;54:53-60.
- [16] MacArther JW. Humidity and predicted-mean vote-base (PMV-base) comfort control. *ASHRAE Transactions* 1986;92;5-17.
- [17] Scheatzle DG. The development of PMV-based control for residence in a hot and arid climate. *ASHRAE Transactions* 1991;97:1002-1019.
- [18] Federspiel CC, Asada H. User-adaptable comfort control for HVAC systems. *Journal of Dynamic Systems, Measurement, and Control* 1994;116:474-486.
- [19] Fanger PO, Toftum J. Extension of the PMV model to non-air-conditioned buildings in warm climates. *Energy and Buildings* 2002;34:533-536.
- [20] Homod RZ, Sahari KSM, Almurib HAF, Nagi FH. RLF and TS fuzzy model identification of indoor thermal comfort based on PMV/PPD. *Building and Environment* 2012;49:141-153.
- [21] Wei S, Li M, Lin W, Sun Y. Parametric studies and evaluations of indoor thermal environment in wet season using a filed survey and PMV-PPD method. *Energy and Buildings* 2010;42:799-806.
- [22] Andreasi WA, Lamberts R, Candido C. Thermal acceptability assessment in buildings located in hot and humid regions in Brazil. *Building and Environment* 2010;45:1225-1232.
- [23] Myhren JA, Holmberg S. Flow patterns and thermal comfort in a room with panel, floor and wall heating. *Energy and Buildings* 2008;40:524-536.
- [24] Tye-Gingras M, Gosselin L. Comfort and energy consumption of hydronic heating radiant ceilings and walls based on CFD analysis. *Building and Environment* 2012;54:1-13.
- [25] Lan L, Pan L, Lian Z, Huang H, Lin Y. Experimental study on thermal comfort of sleeping people at different air temperatures. *Building and Environment* 2014;73:24-34.
- [26] Atmaca I, Kaynakli O, Yigit A. Effects of radiant temperature on thermal comfort. *Building and Environment* 2007;42:3210-3220.
- [27] Buratti C, Moretti E, Belloni E, Cotana F. Unsteady simulation of energy performance and thermal comfort in non-residential buildings. *Building and Environment* 2013;59:482-491.

- [28] Selens D, Parys W, Baetens R. Energy and comfort performance of thermally activated building systems including occupant behaviour. *Building and Environment* 2011;46:835-848.
- [29] Alfano FRD, Palella BI, Riccio G. The role of measurement accuracy in the thermal environment assessment by means of OMV index. *Building and Environment* 2011;46:1361-1369.
- [30] Frontczak M, Wargocki P. Literature survey on how different factors influence human comfort in indoor environments. *Building and Environment* 2011;46:922-937.
- [31] Cengel YA, Ghajar AJ. *Heat and mass transfer: Fundamentals and applications*. Fourth edition. New York: McGraw-Hill, 2011.
- [32] Wang M, Chen Q. Assessment of various turbulence models for transitional flows in enclosed environment (RP-1271). *HVAC & R Research* 2009;15:1099-1119.
- [33] Jiang Y, Alexander D, Jenkins H, Arthur R, Chen Q. Natural ventilation on in buildings: Measurement in a wind tunnel and numerical simulation with large eddy simulation. *Journal of Wind Engineering and Industrial Aerodynamics* 3002;91:331-353.
- [34] Chen Q, Lee K, Mazumdar K, Poussou S, Wang L, Wang M, Zhang Z. Ventilation performance prediction for buildings: Model assessment. *Building and Environment* 2010;45:295-303.
- [35] Jin M, Zuo W, Chen Q. Simulating natural ventilation in and around buildings by fast fluid dynamics. *Numerical Heat transfer, Part A: Applications, An International Journal of Computation and Methodology* 2013;64:273-289.
- [36] Horikiri K, Yao YF, Yao J. Numerical study of unsteady airflow phenomena in a ventilated room. *Computational Thermal Sciences* 2012;4:317-333.
- [37] Horikiri K, Yao YF, Yao J. Modelling conjugate flow and heat transfer in a ventilated room for indoor thermal comfort assessment. *Building and Environment* 2014;77:135-147.
- [38] Olesen BW, Mortensen E, Thorshauge J, Berg-Munch B. Thermal comfort in a room heated by different methods. Technical paper no. 2256. Los Angeles Meeting: ASHRAE Transactions 86, 1980.
- [39] Zuo W, Chen Q. Real-time or faster-than-real time simulation of airflow in buildings. *Indoor Air* 2009;19:33-44.
- [40] Patankar SV, Spalding DB. A calculation procedure for heat, mass and momentum transfer in three-dimensional parabolic flow. *International Journal of Heat and Mass Transfer* 1972;15:1787-1806.

- [41] Raji A, Hasnaoui M, Bahlaoui A. Numerical study of natural convection dominated heat transfer in a ventilated cavity: Case of forced flow playing simultaneous assisting and opposing roles. *International Journal of Heat and Fluid Flow* 2008;29:1174-1181.
- [42] Fluent 6.3. User's guide: Radiation temperature. 2006
- [43] Bojic M, Yik F, Lo TY. Locating air-conditioners and furniture inside residential flats to obtain good thermal comfort. *Energy and Buildings* 2002;34:745-751.
- [44] Sorensen DN, Voigt LK. Modelling flow and heat transfer around a seated human body by computational fluid dynamics. *Building and Environment* 2003;38:753-762.
- [45] Zhuang R, Li X, Tu J. CFD study of the effects of furniture layout on indoor air quality under typical office ventilation schemes. *Building Simulation* 2014;7:263-275.
- [46] Niu JL, Zuo HG, Burnett J. Simulation methodology of radiant cooling with elevated air movement. *Building simulation, Seventh International IBPSA Conference, Rio de Janeiro, Brazil. 2001.*
- [47] Nilsson HO. Comfort climate evaluation with thermal manikin methods and computer simulation models. Stockholm: Arbetslivsinstitutet, 2004.
- [48] Lin Z, Chow TT, Tsang CF, Chan LS, Fong KF. Effect of air supply temperature on the performance of displacement ventilation (Part 1) - Thermal comfort. *Indoor and Building Environment* 2005;14:103-115.
- [49] Office of the Deputy Prime Minister. *The Building Regulations 2000, Ventilation.* London: RIBA Bookshops, 2006. Available at [www.gov.uk](http://www.gov.uk).