



UAEM

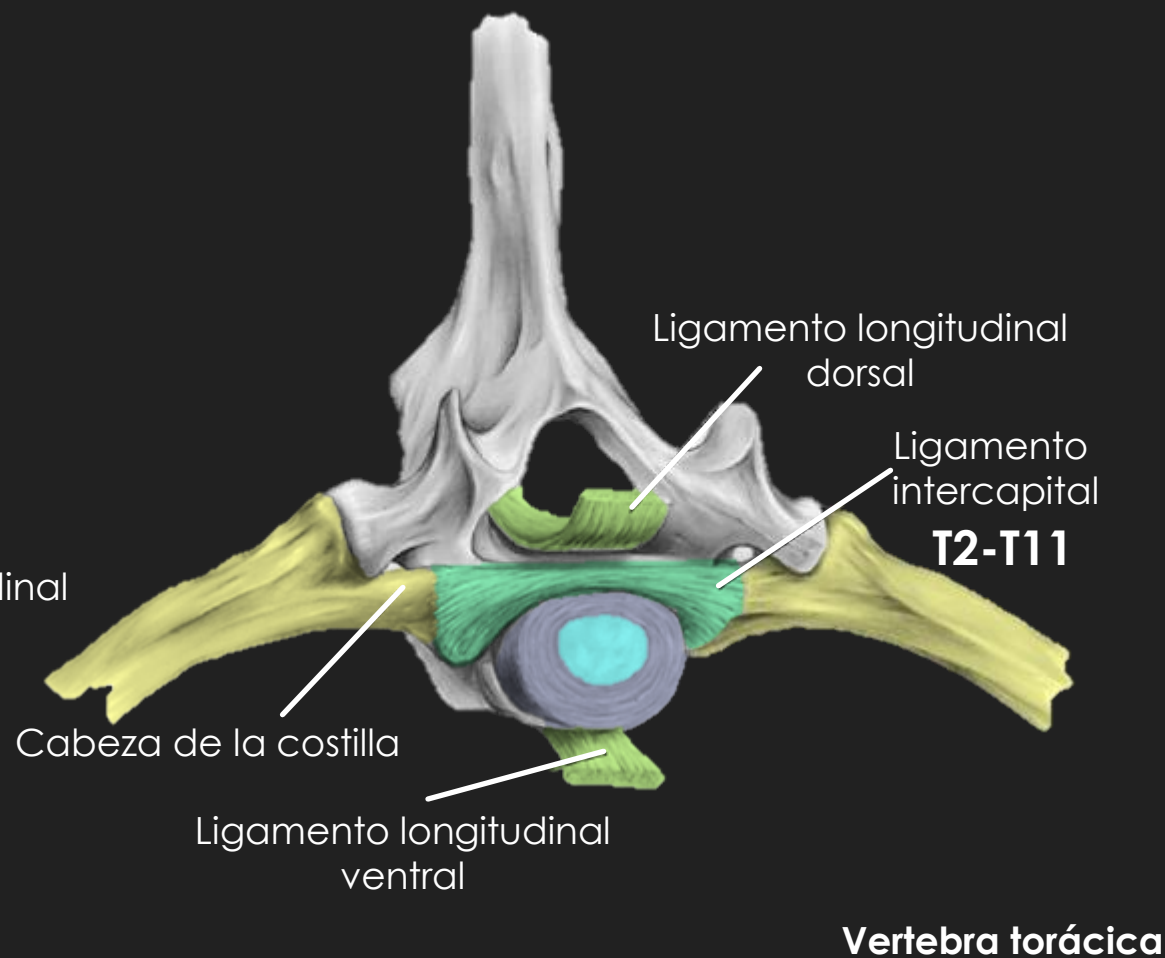
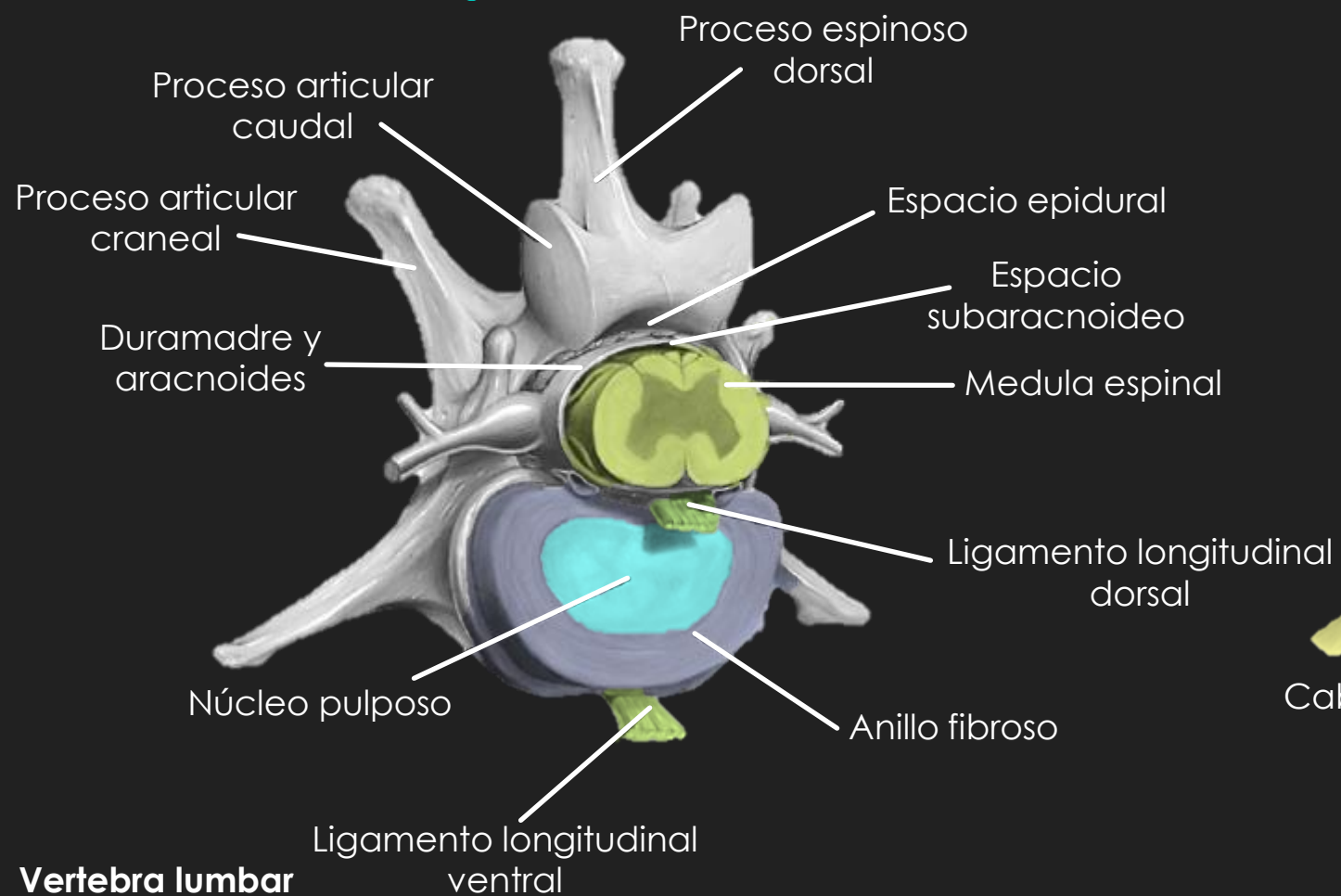
Universidad Autónoma
del Estado de México



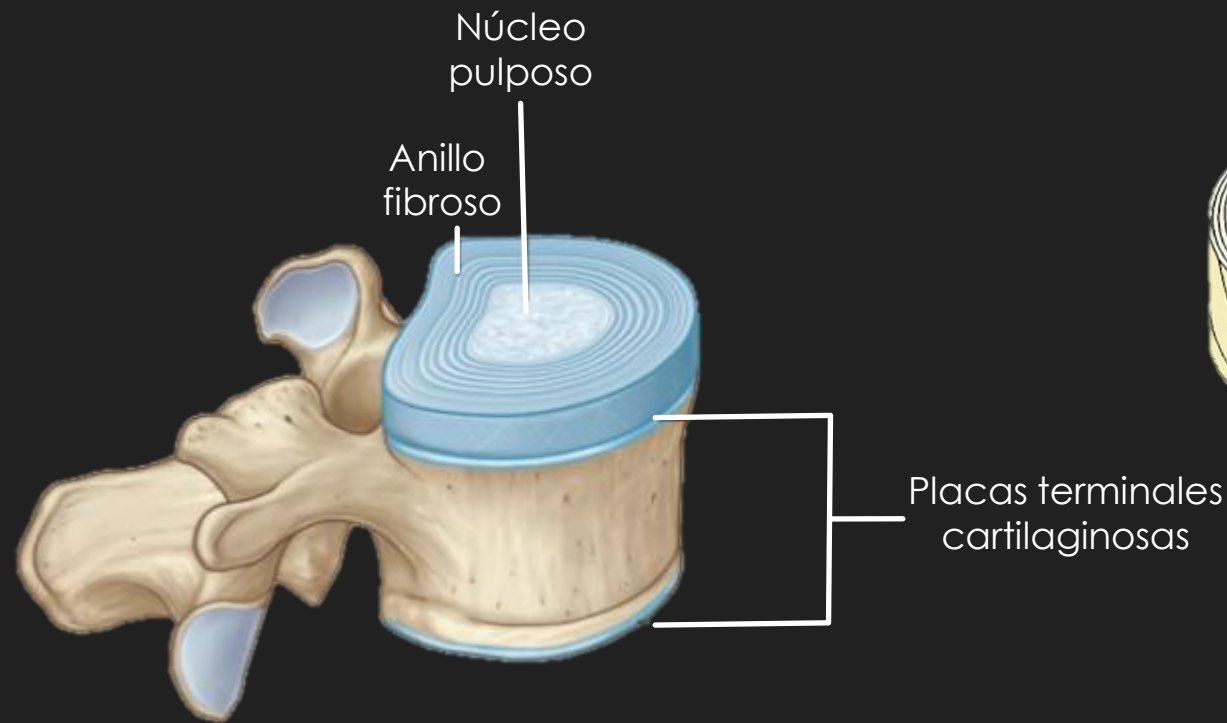
RADIOLOGÍA DE ENFERMEDAD VERTEBRAL

M. En C. Sandra Díaz González Vieyra
Jefe del Área de Imagenología
Hospital Veterinario pequeñas especies

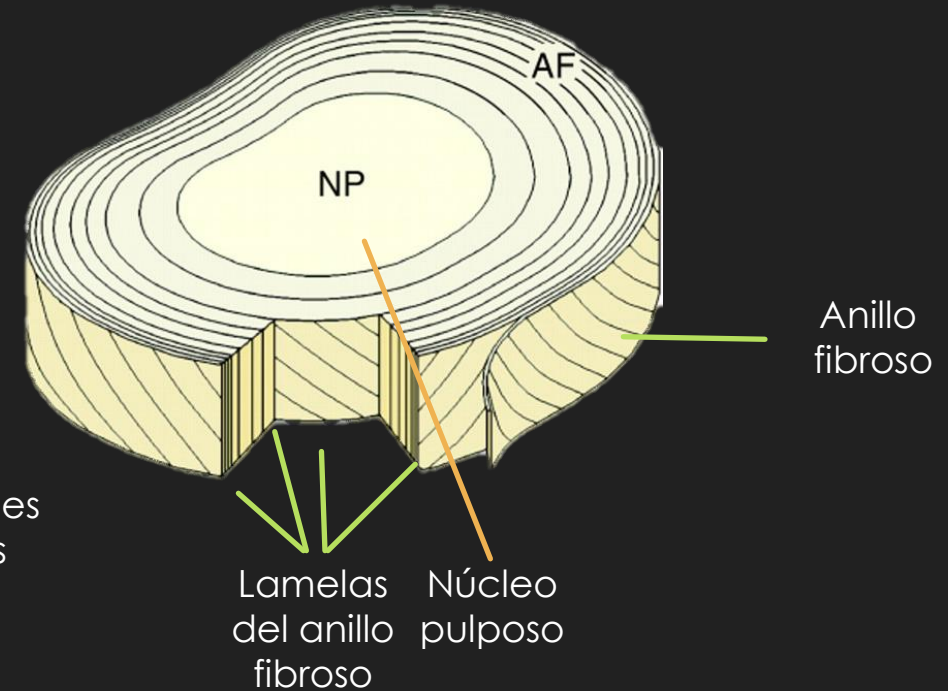
Consideraciones anatómicas vertebrales



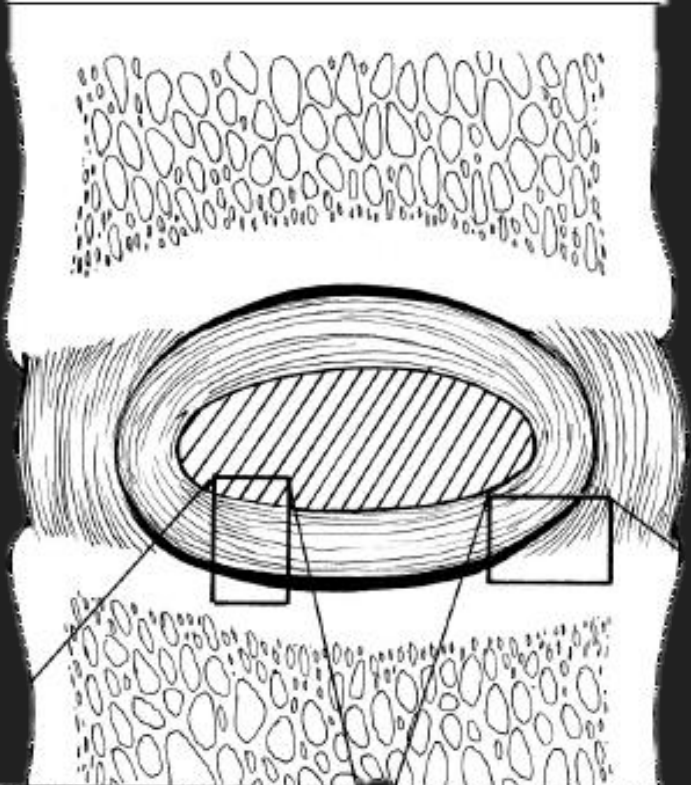
Consideraciones anatómicas discales



- Agua 55%
- Agrecano 8%
- Colágeno y elastina 25 %



- Fibras de colágeno y elastina 15%
- Proteoglicano 5%
- Agua 70%

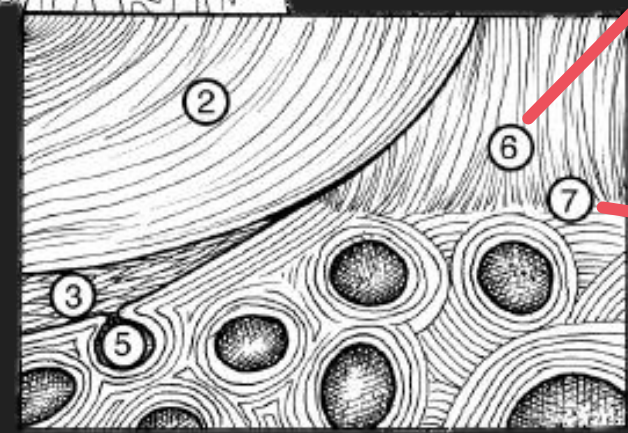
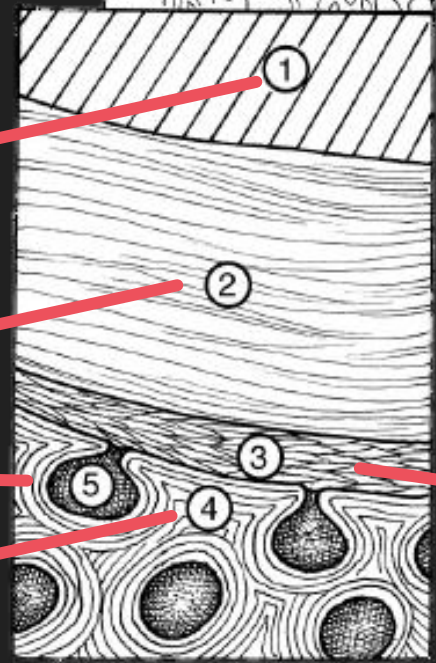


1. Núcleo pulposo

2. Anillo fibroso

5. Canal vascular en contacto directo con la placa terminal

4. Placa ósea terminal

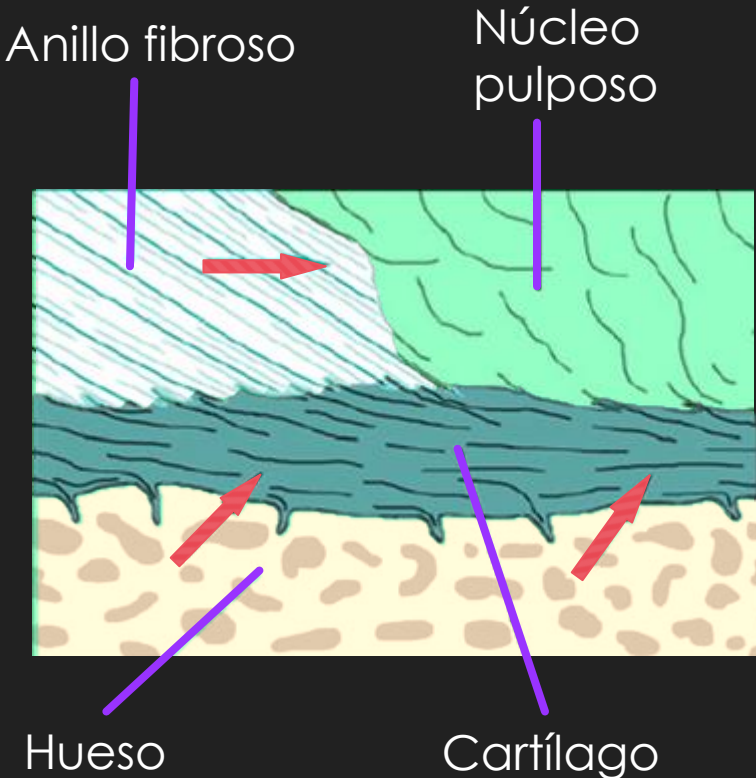
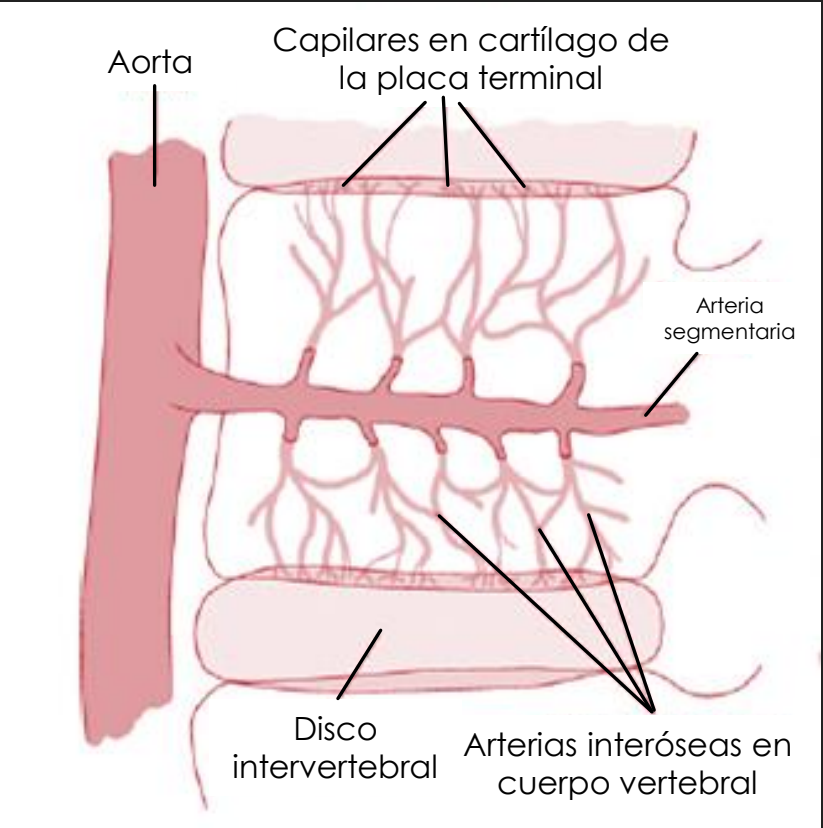


6. Fibras externas del anillo fibroso

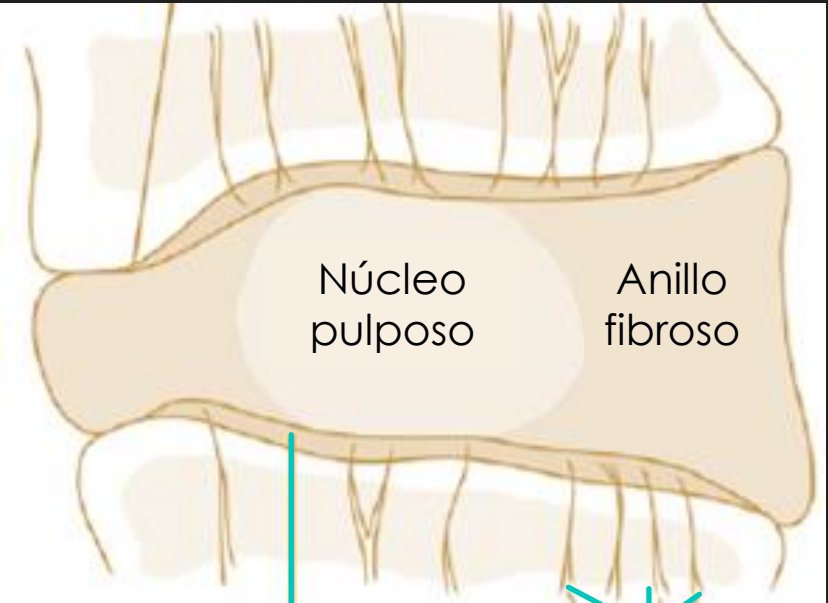
7. Anclaje de las fibras a la placa ósea (Fibras de Sharpey)

3. Disposición horizontal de las fibras de colágena en la placa terminal cartilaginosa

Irrigación discal

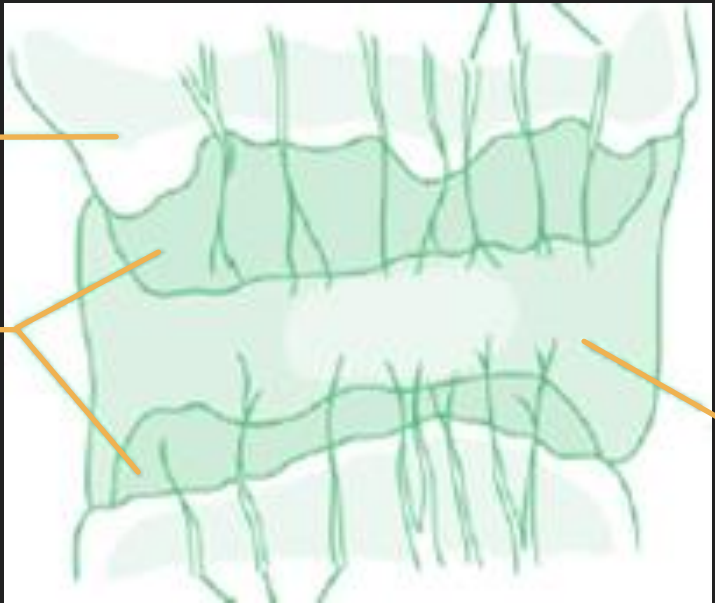


Irrigación discal



Cartílago articular

Canales vasculares



Canales vasculares

Vertebra

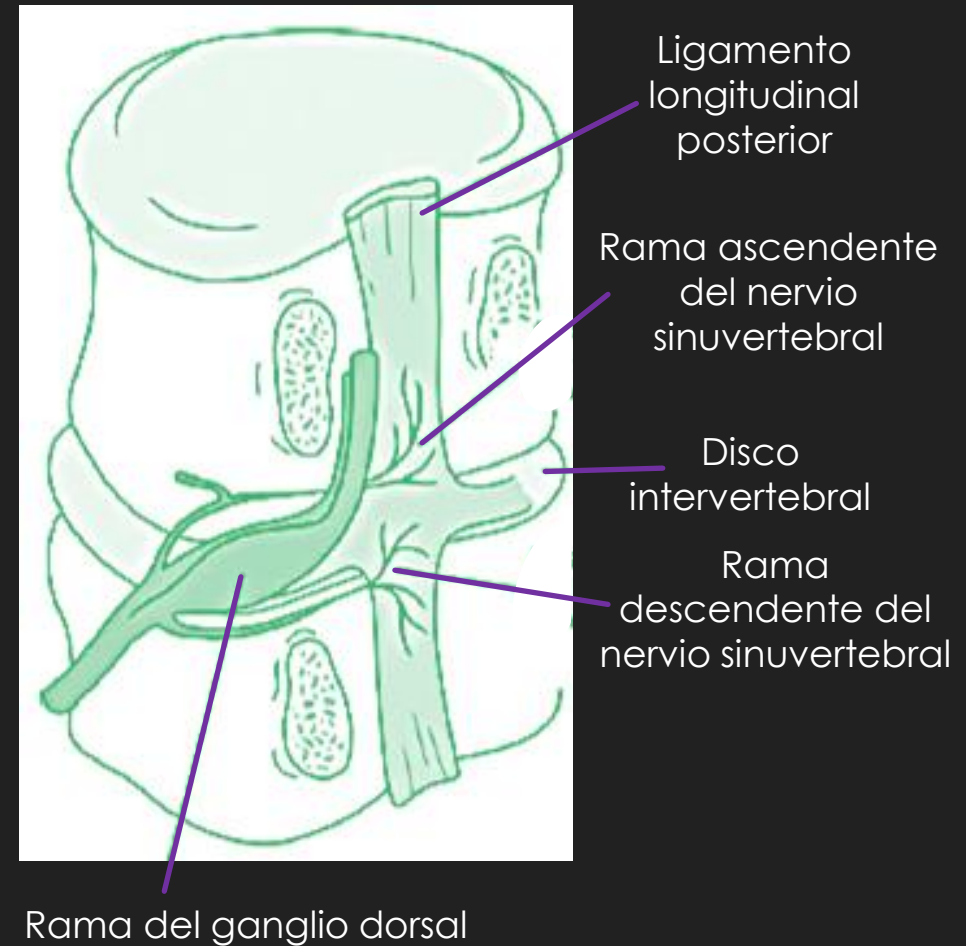
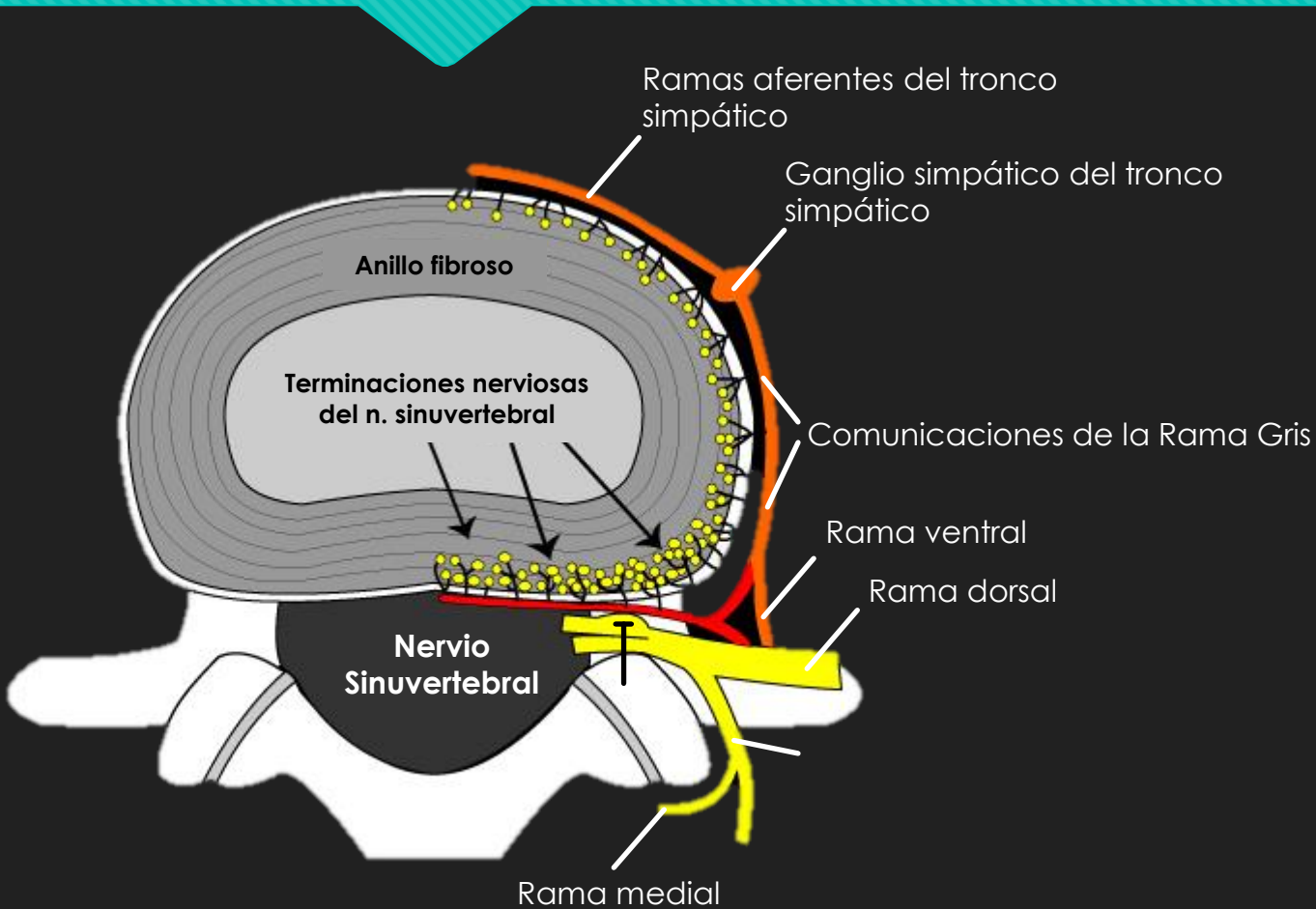
Cartílago articular

Anillo fibroso

Geriatra

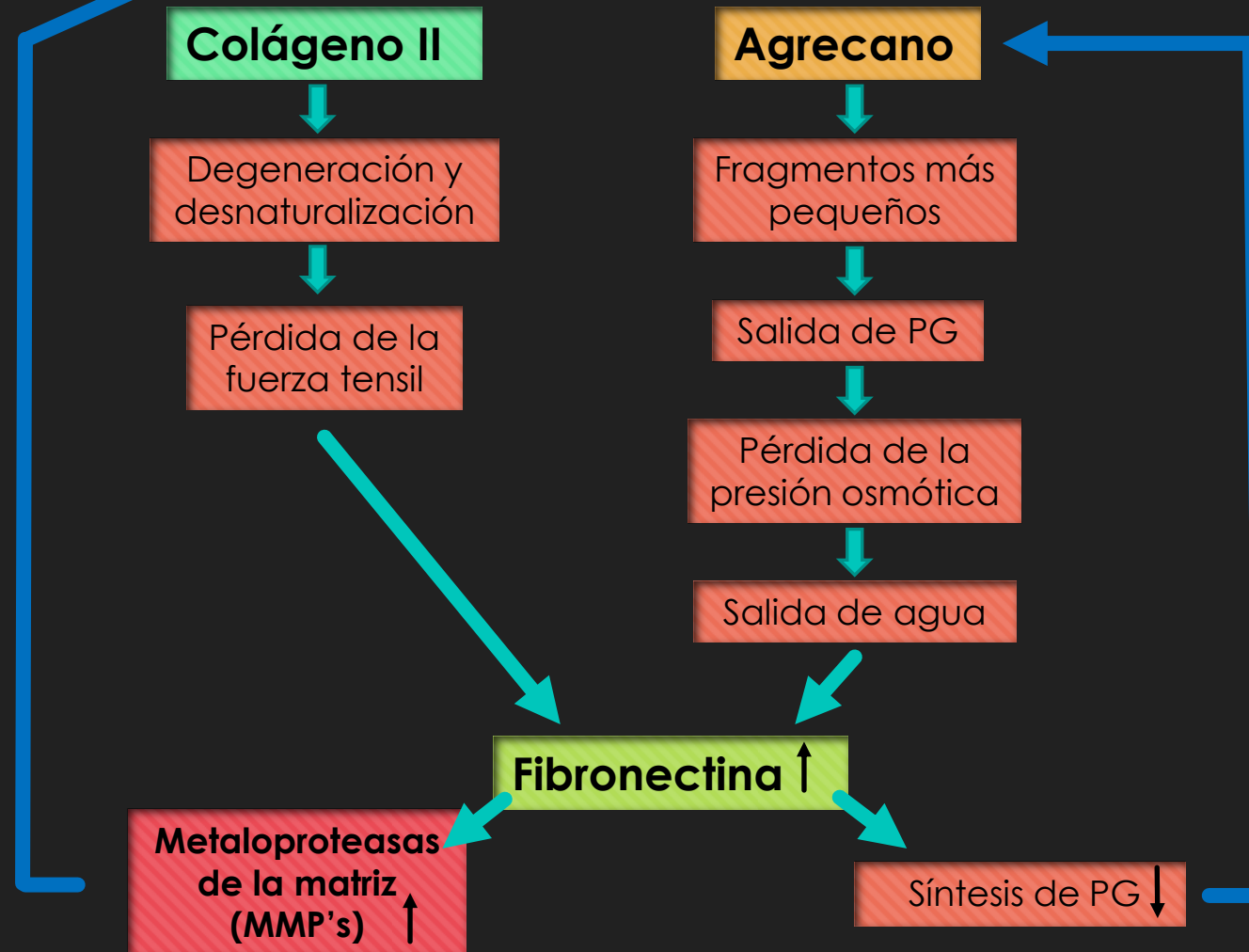
Juvenil

Inervación discal

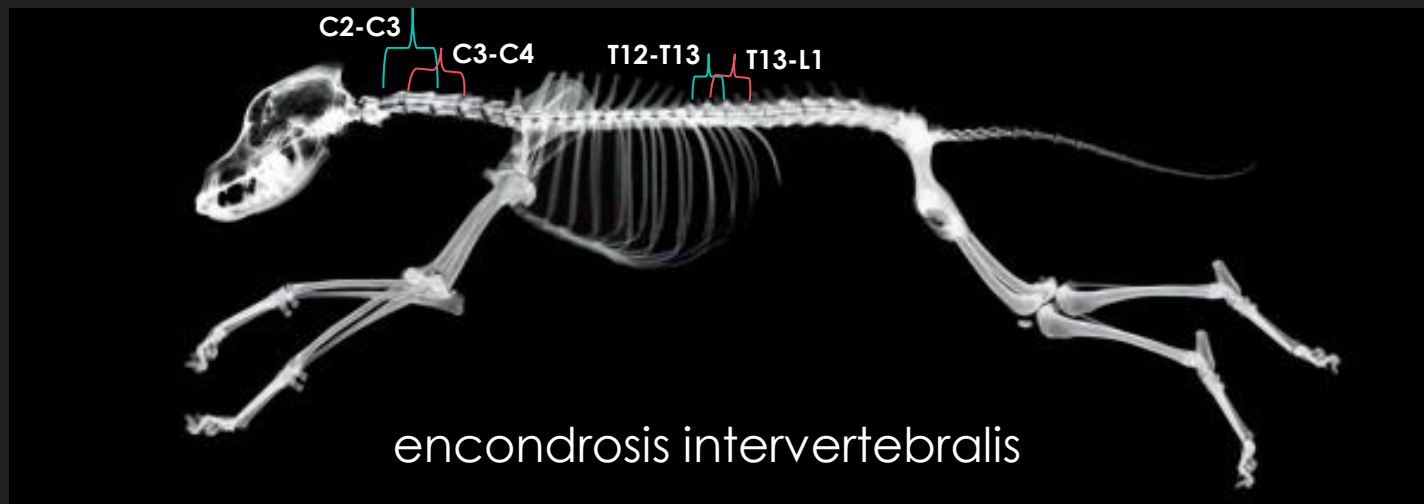


Deficiencias en el riego sanguíneo

Fisiopatología

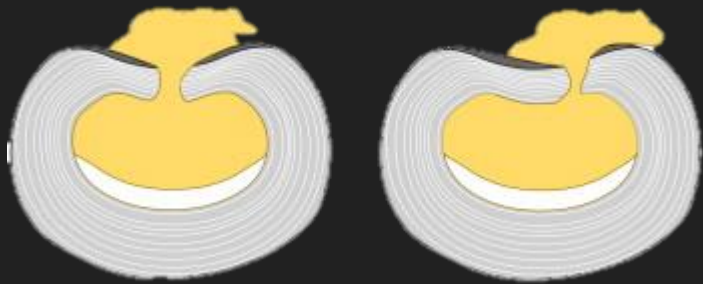


Discopatías



Clasificación de Hansen

Hansen tipo I

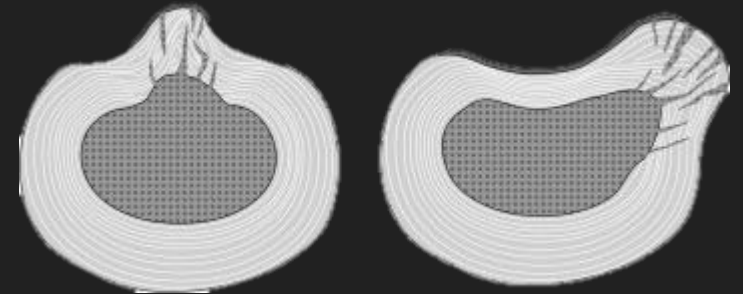


- Signos neurológicos agudos
- Degeneración condroide
- Razas condrodistróficas
- 2-7 años → 4 años

Hansen tipo III ¿?

- Prolapso traumático de disco
- Disco misil
- Extrusión del núcleo pulposo aguda no compresiva,
- Enfermedad del disco de alta velocidad y bajo volumen
- Explosión discal
- Herniación discal traumática.

Hansen tipo II



- Signos neurológicos crónicos
- Degeneración fibroide
- Razas no condrodistróficas
- 8-10 años

Normal

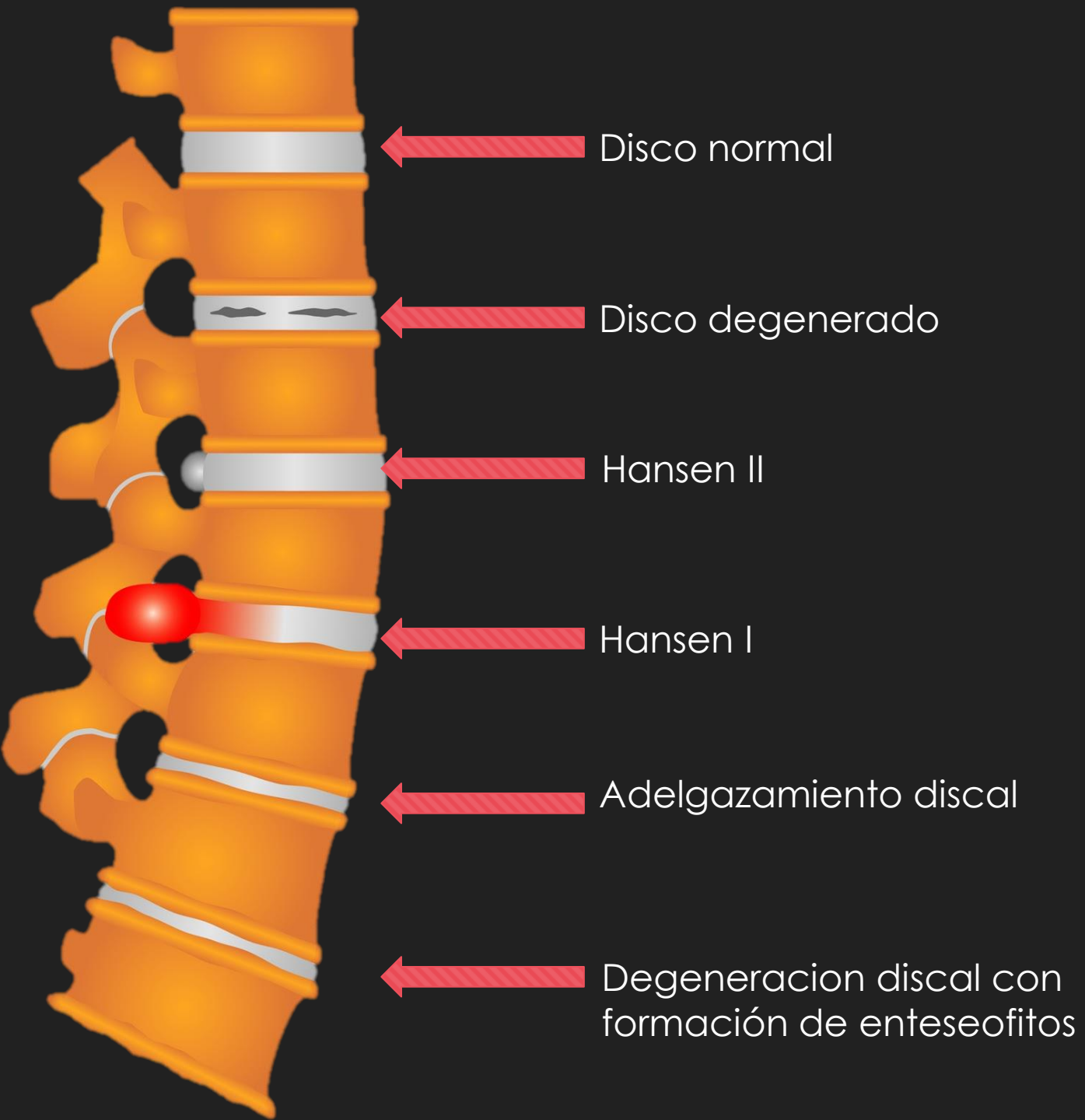


Hansen tipo I



Hansen tipo II





Calcificación discal

Dog no.10



T1



Severa

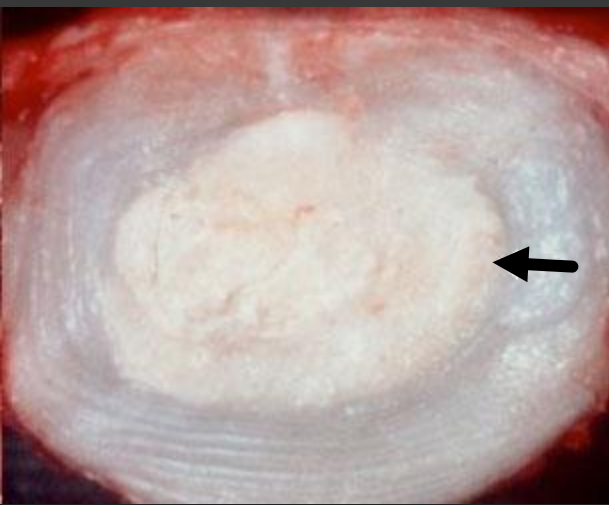


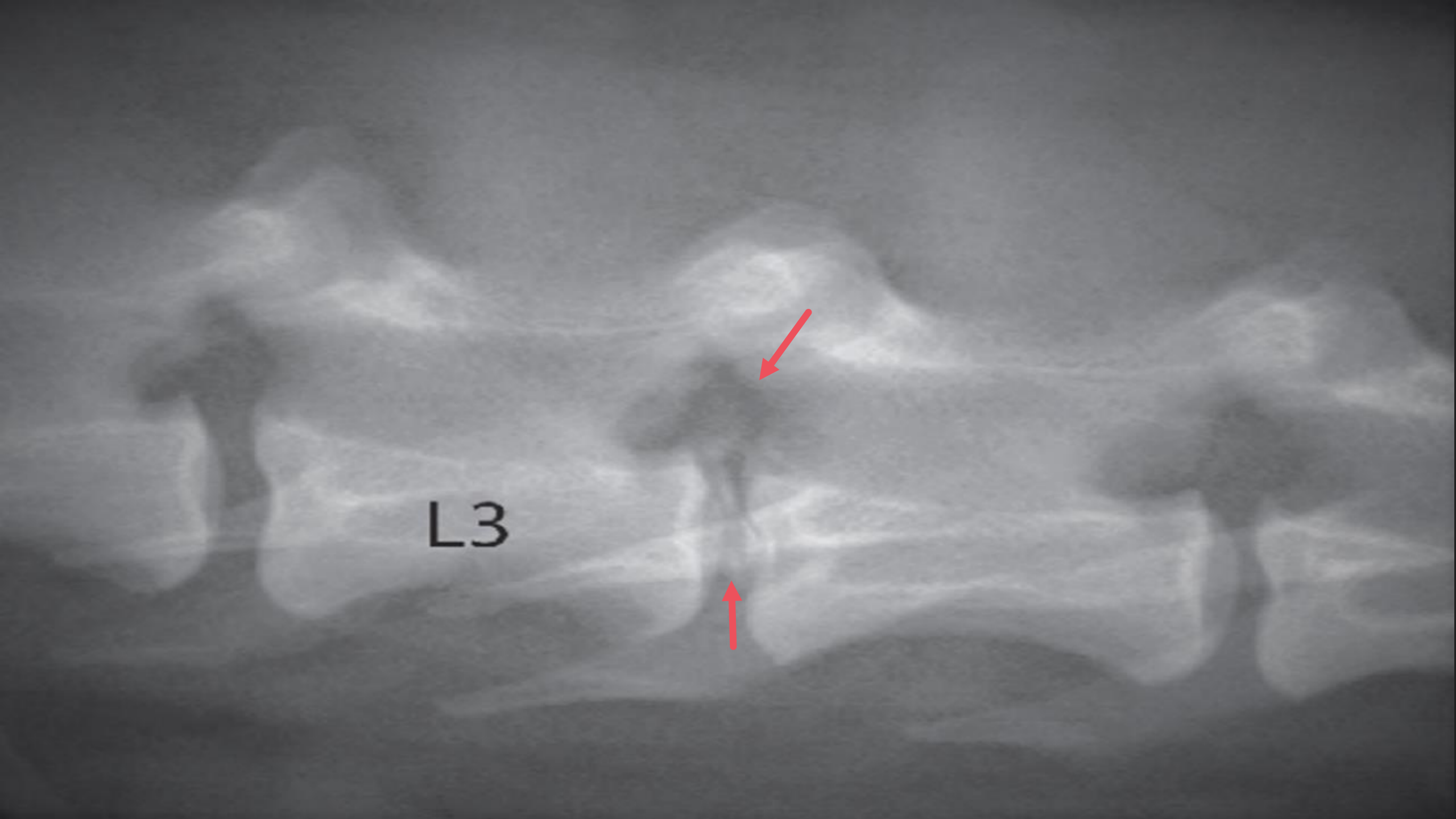
Moderada



Ligera

T5





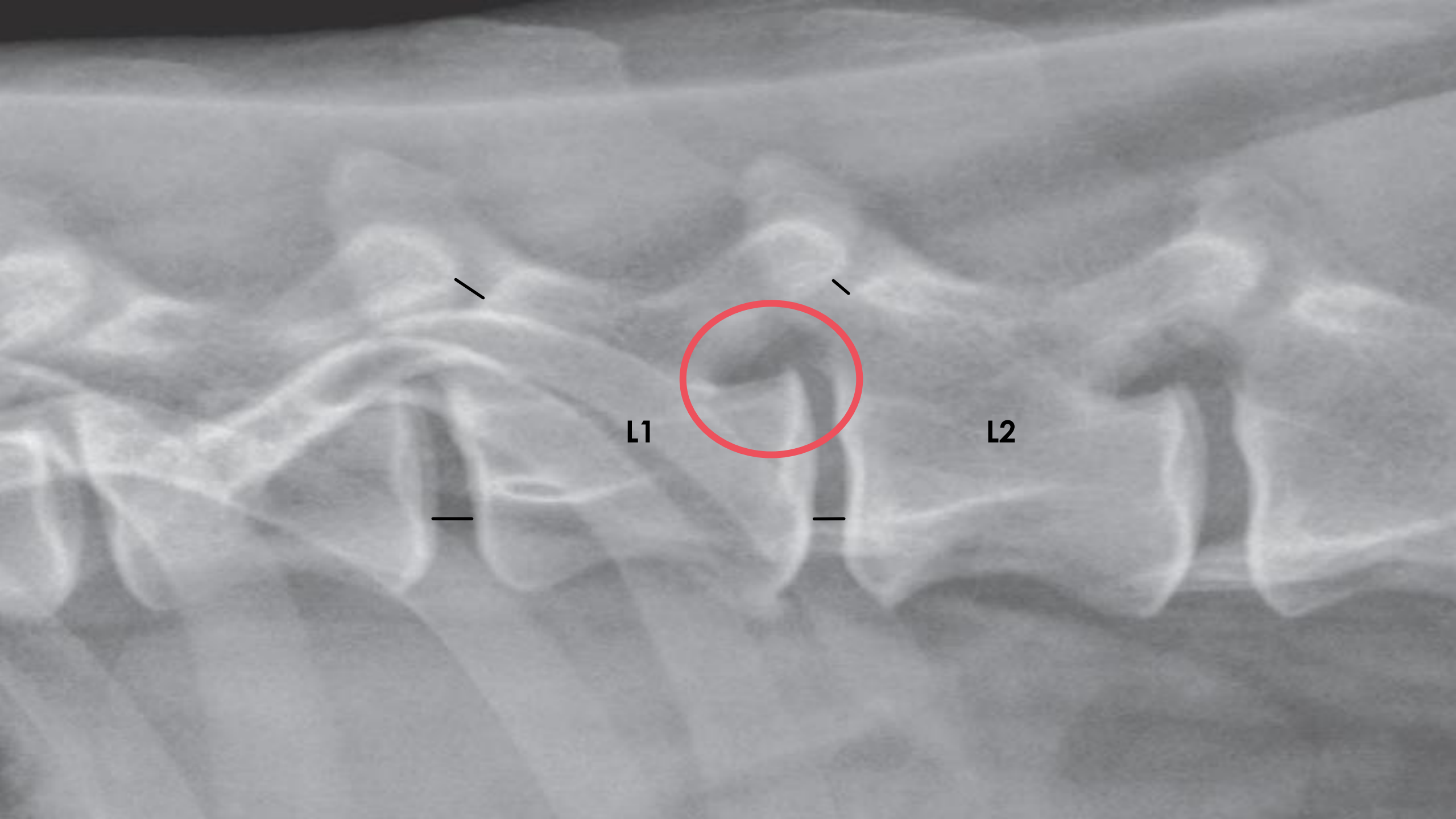
L3

T10 - T11

L2 - L5

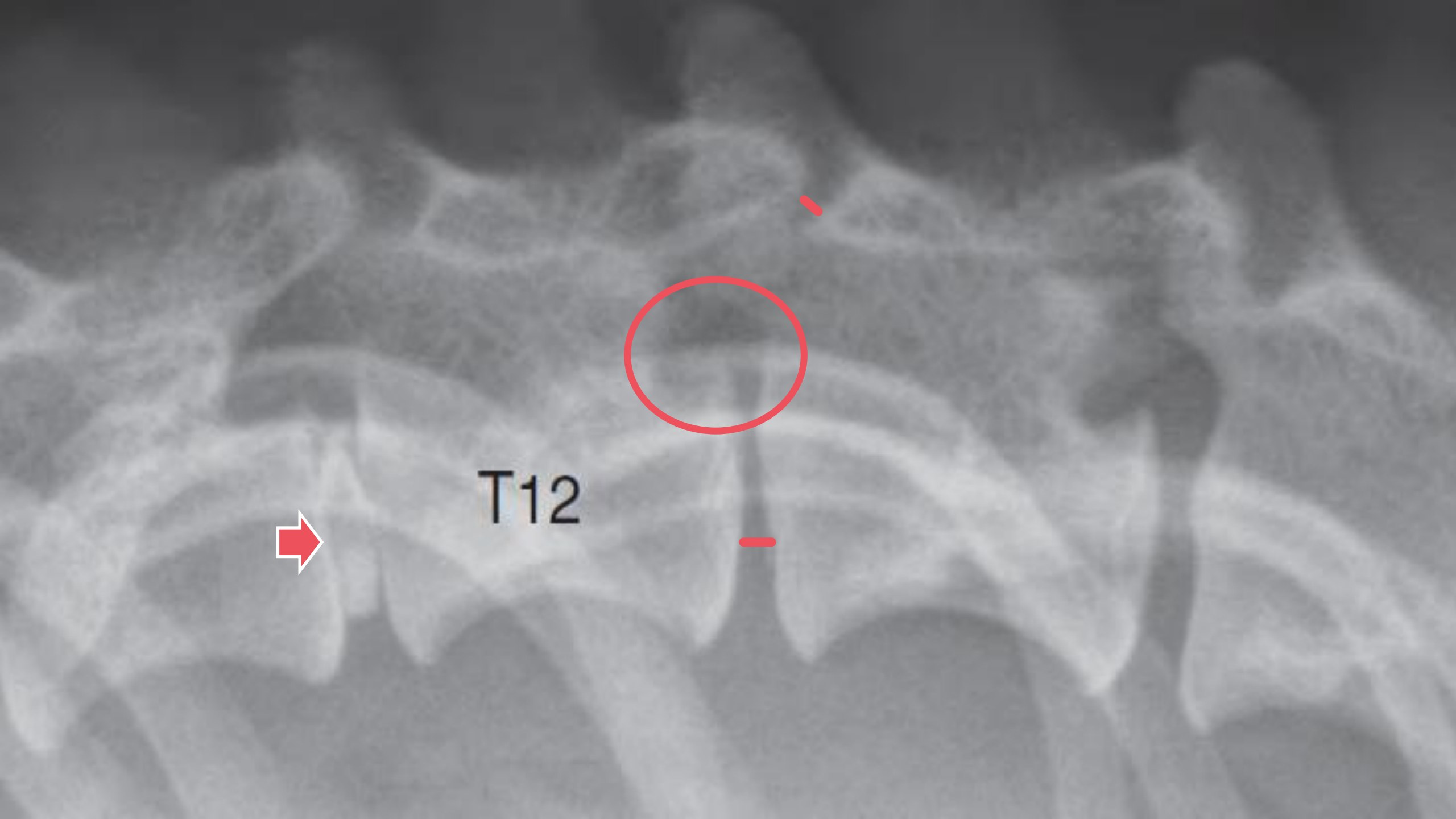
Disminución de los espacios vertebrales



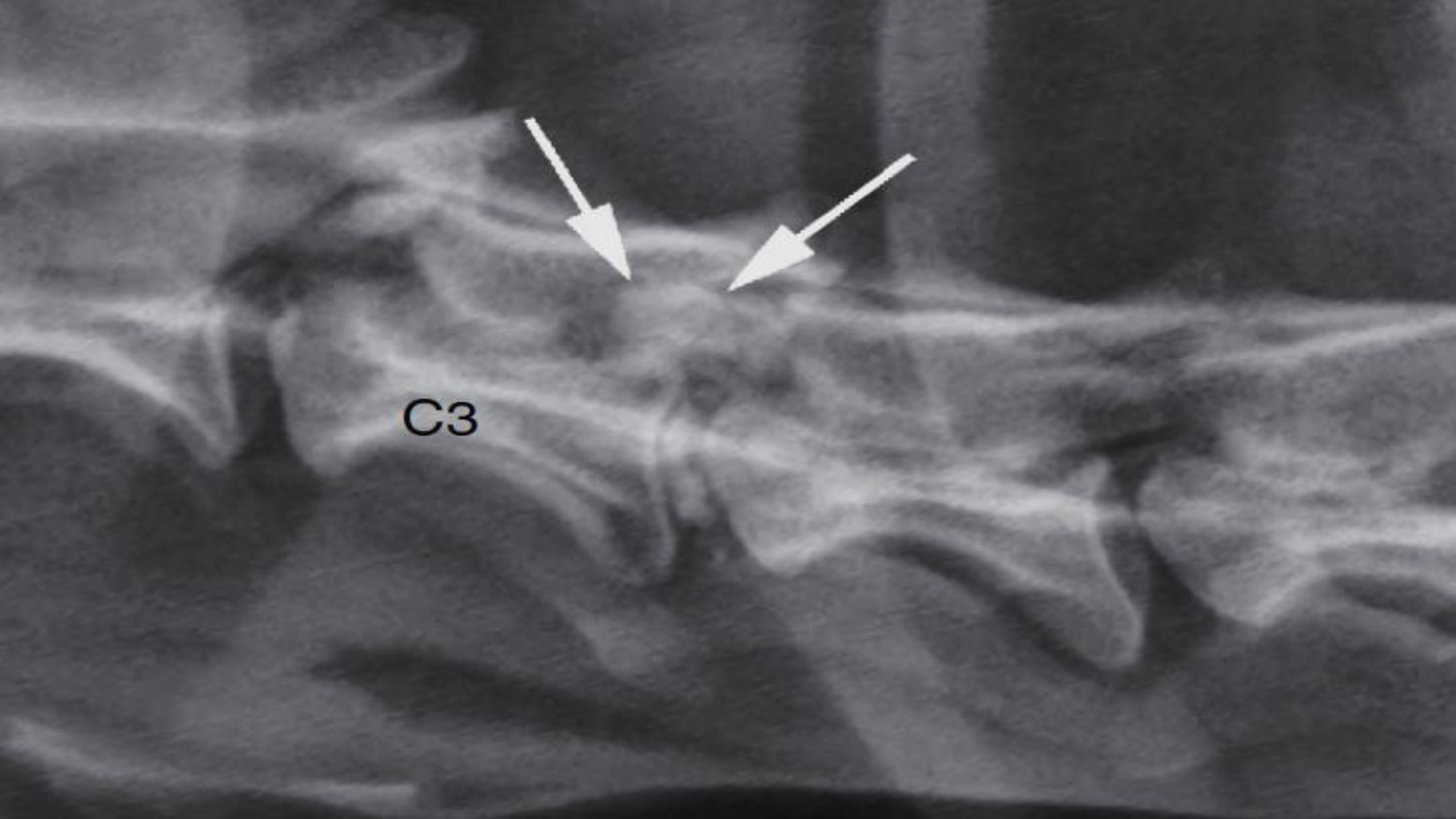


L1

L2



T12

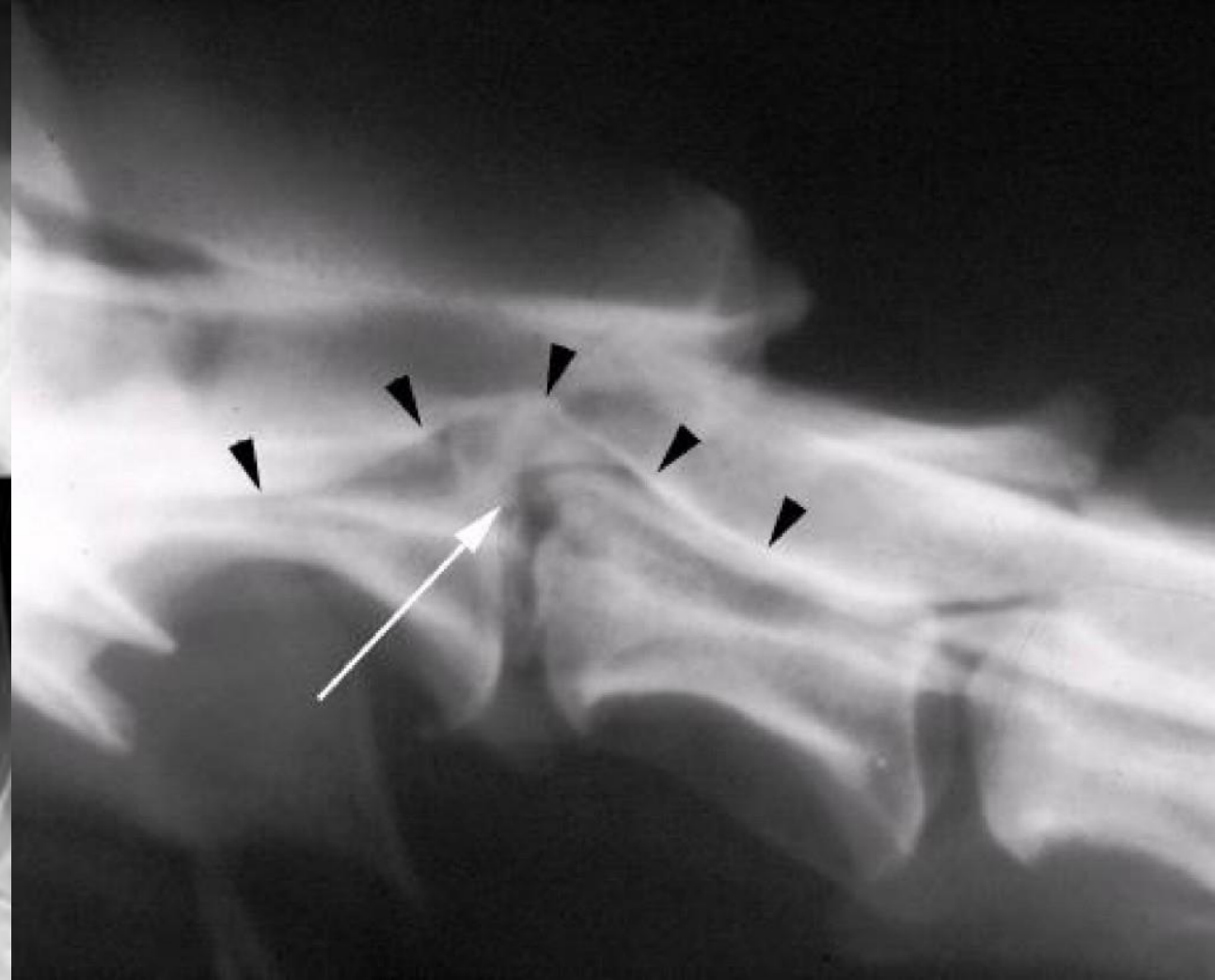
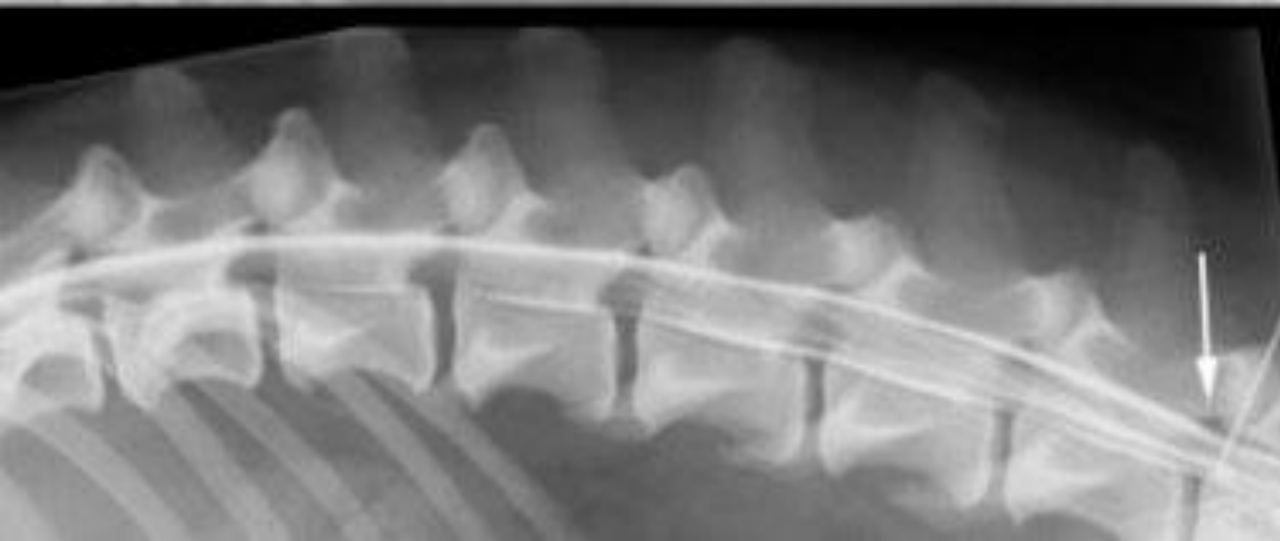
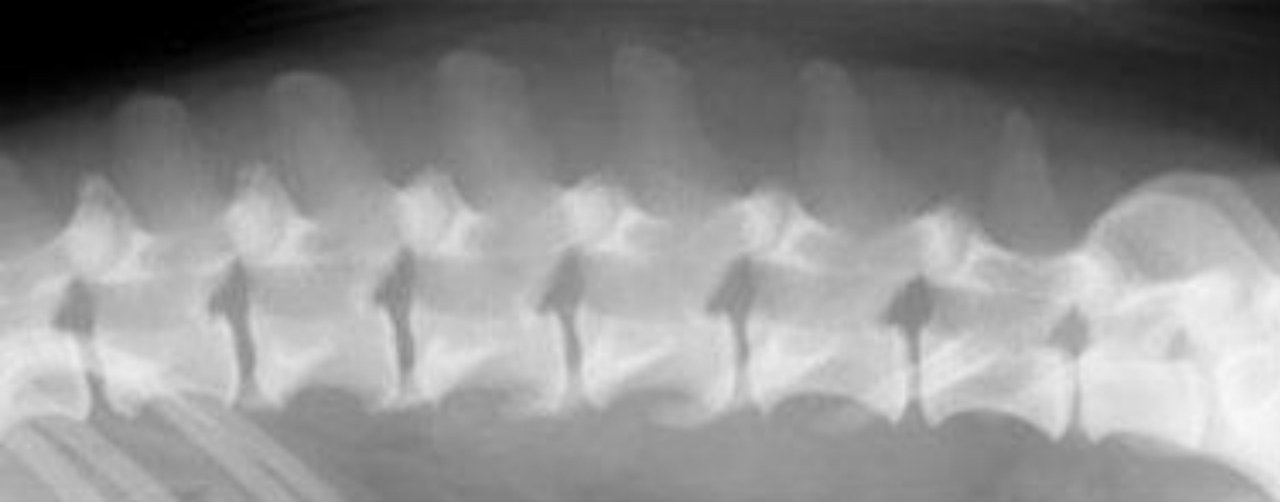


C3

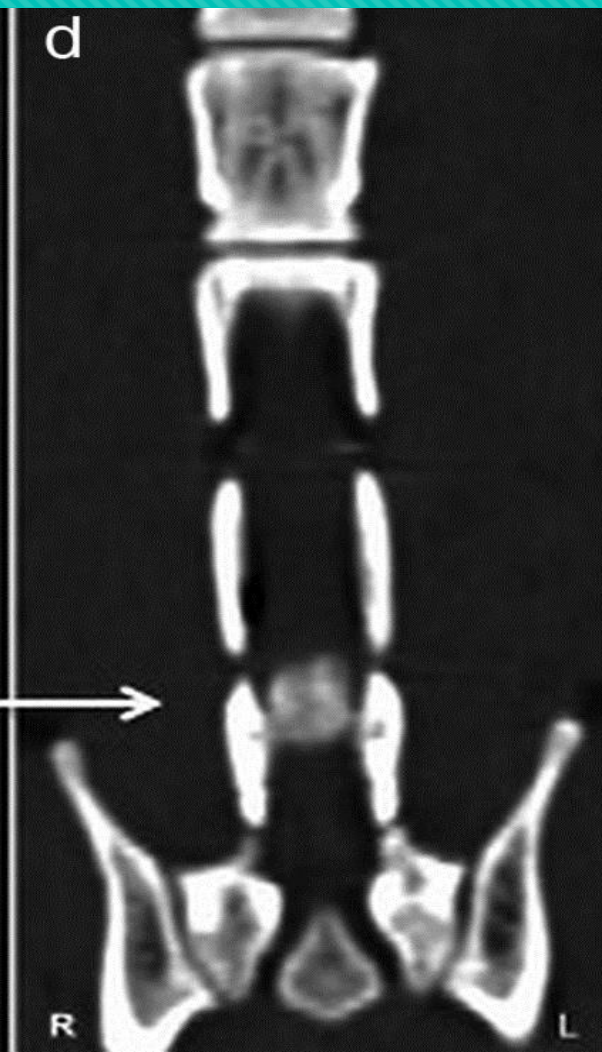
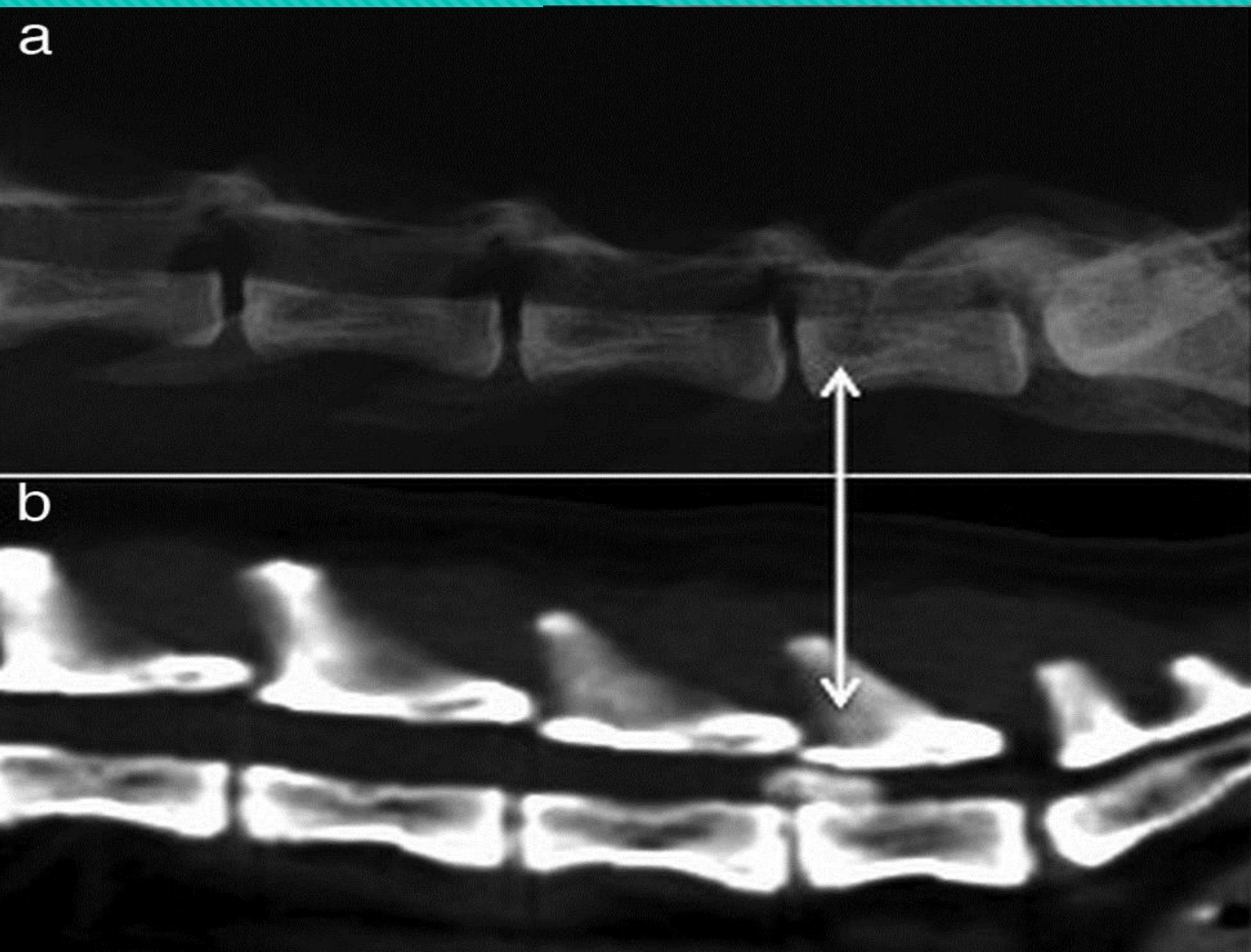
Mielografía

- Medio de contraste iodado (espacio subaracnoideo) iohexol y Iopamidol 0.3-0.4 ml/kg
- Cisterna magna (mielografía cervical)
- Mielografía lumbar. (L6)

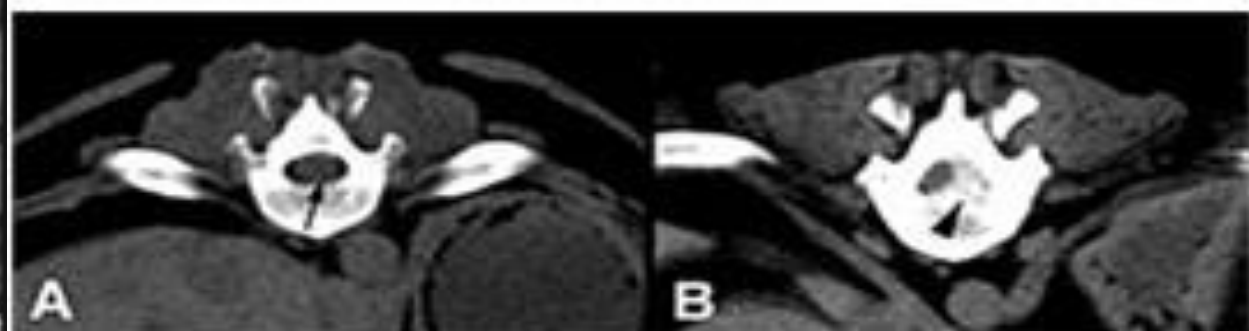
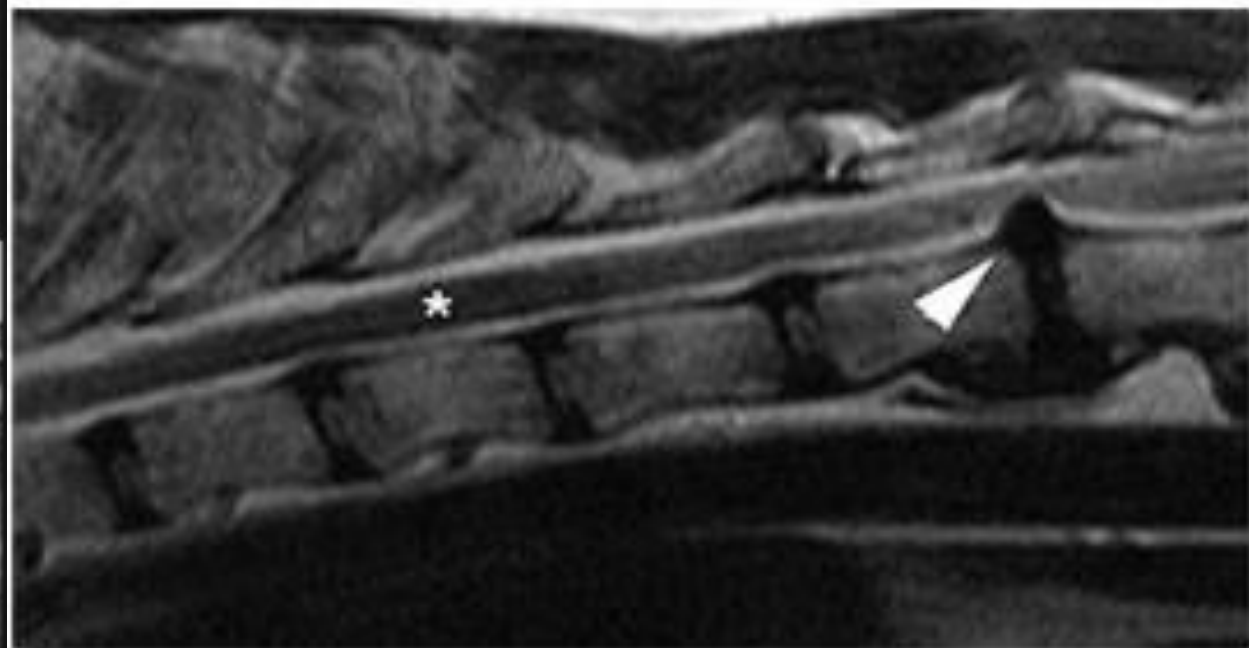
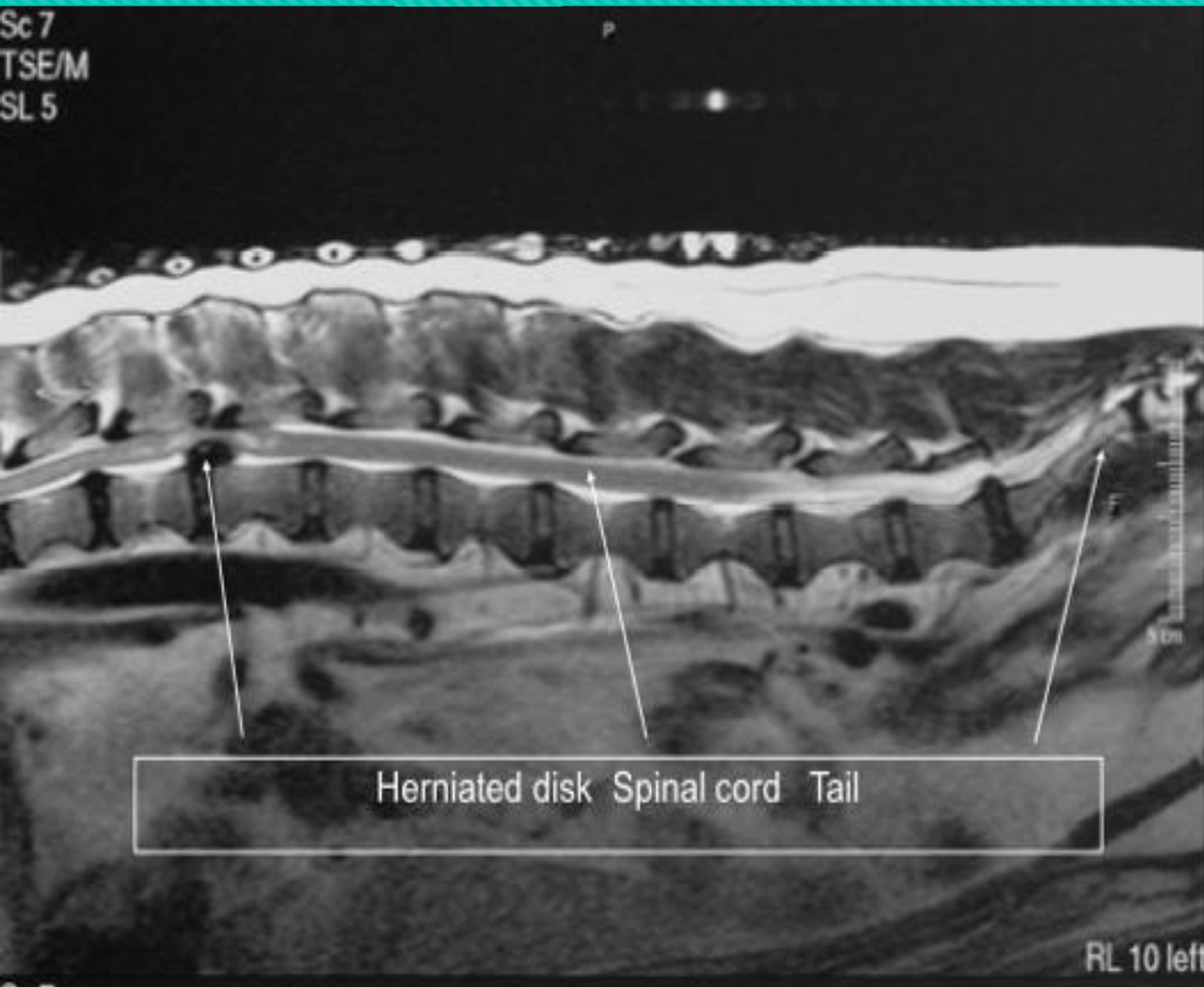
- Convulsiones
- Daño a la medula espinal
- Reacciones alérgicas



Tomografía computarizada (CT)



Resonancia magnética



Espondilosis deformante

- Espectro de cambios degenerativos
- Razas grandes
- Región toracolumbar (T4-T6, T9-T10) y lumbosacra (L2-L3,L7-S1)

Trauma repetitivo

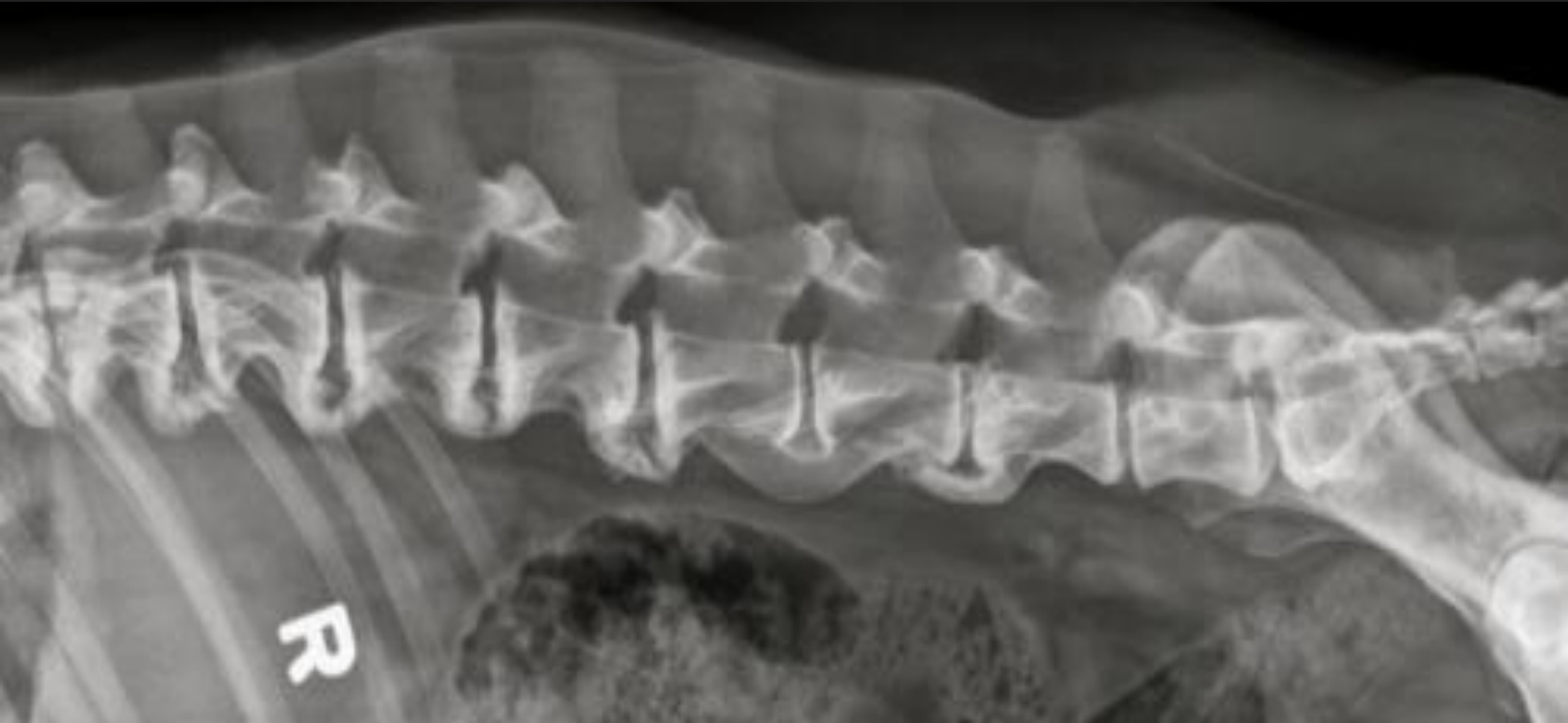
Inestabilidad

Envejecimiento y desgaste normales

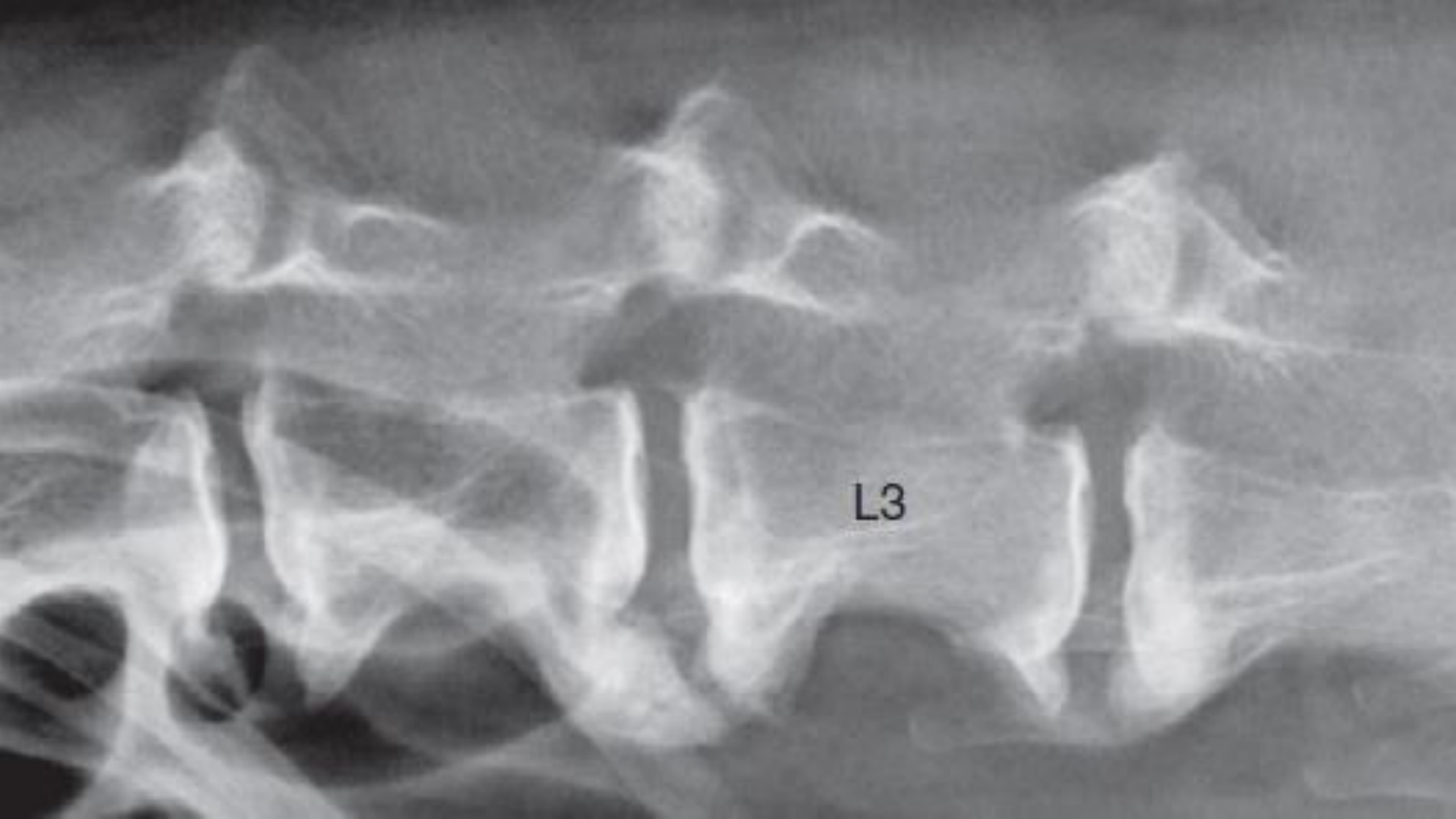
Componente hereditario.

Disrupción de las Fibras de Sharpey

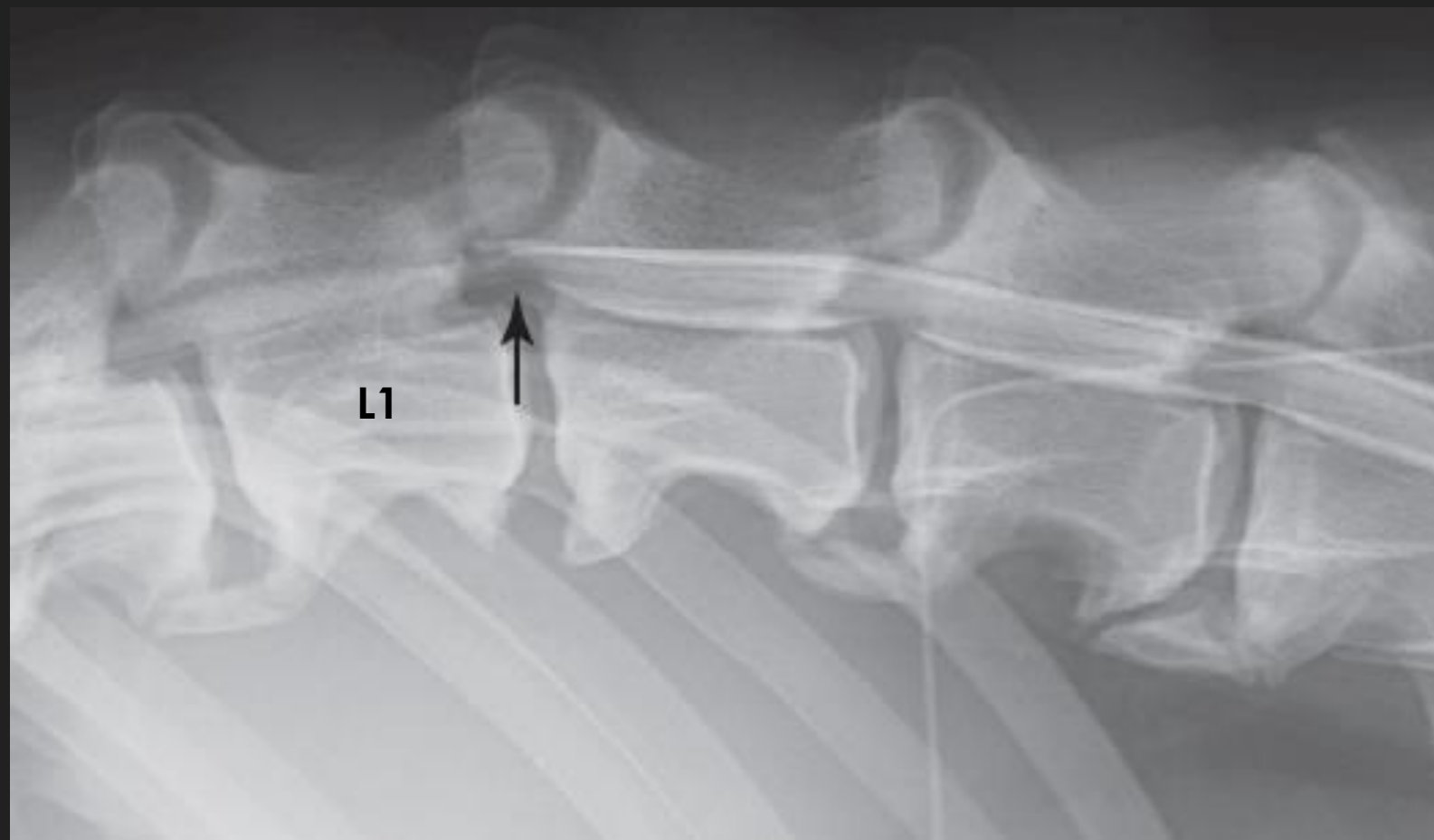
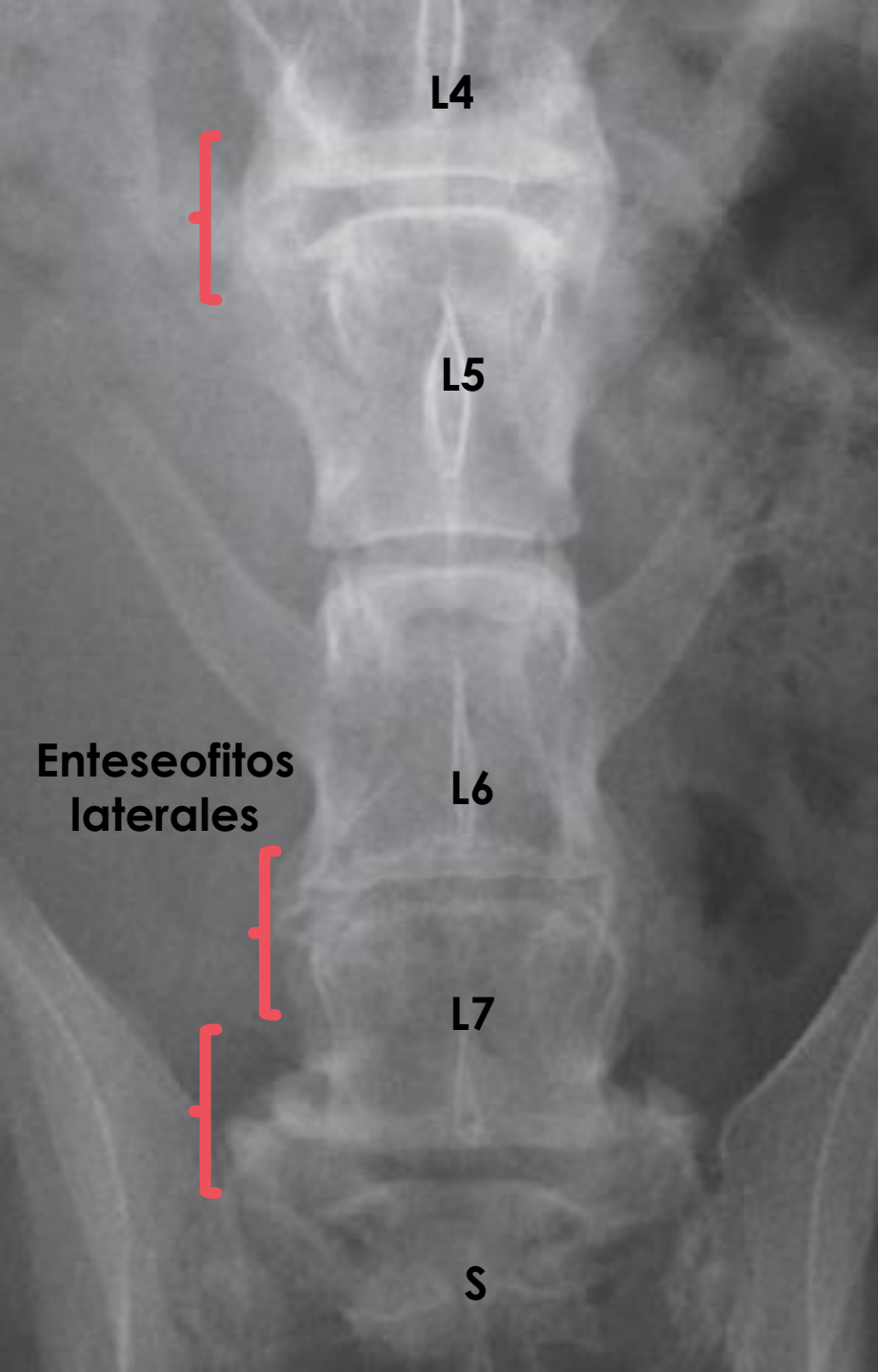




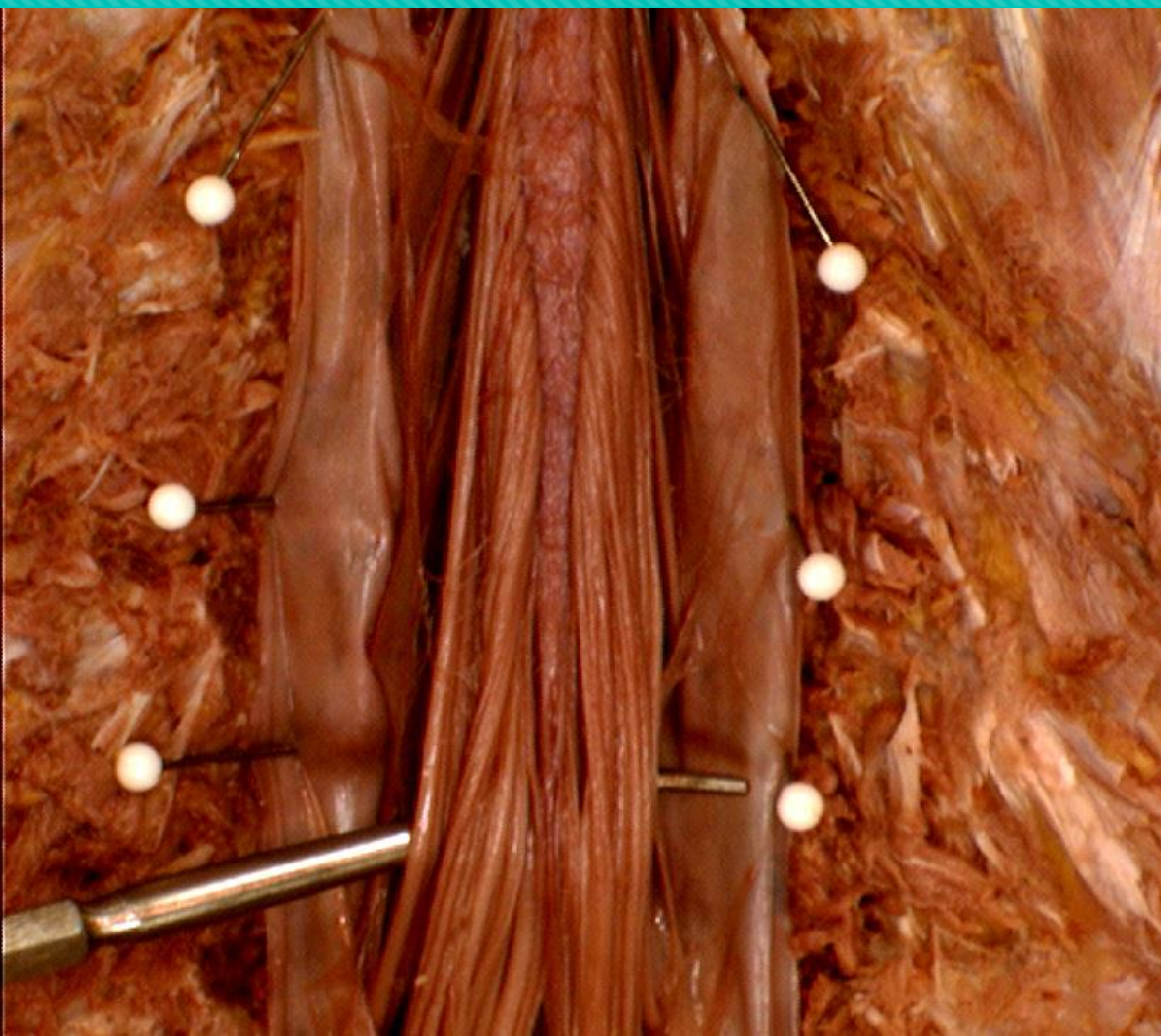
R



L3



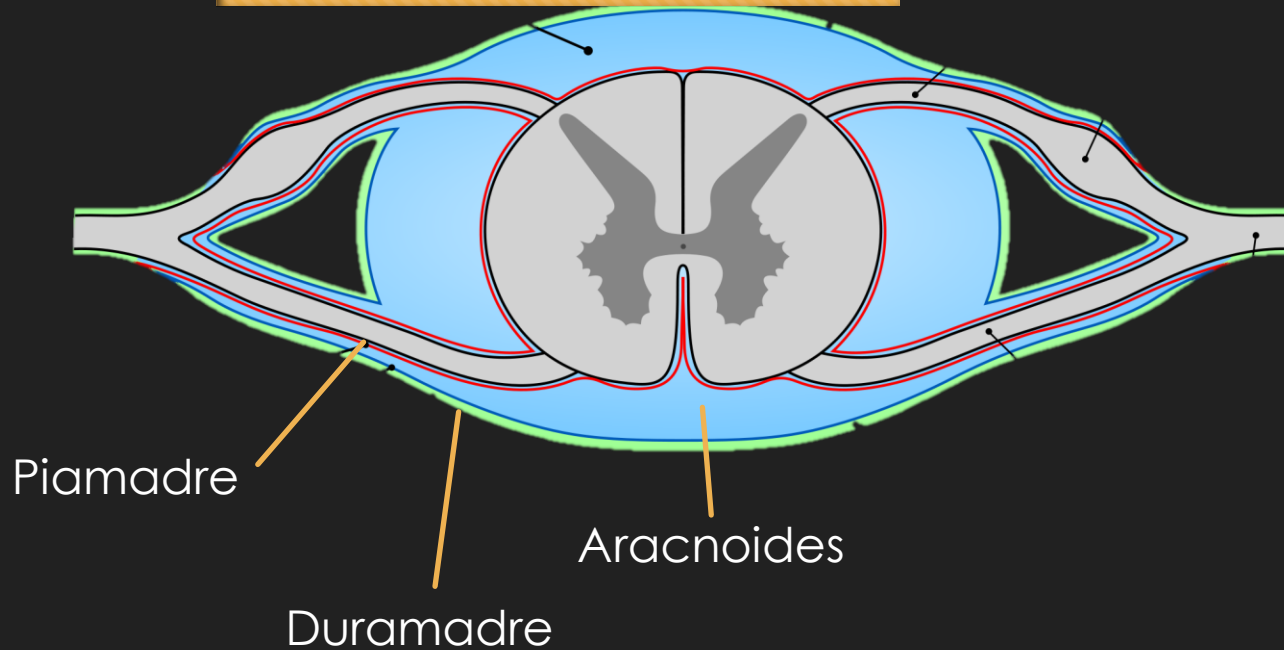
Inestabilidad lumbosacra



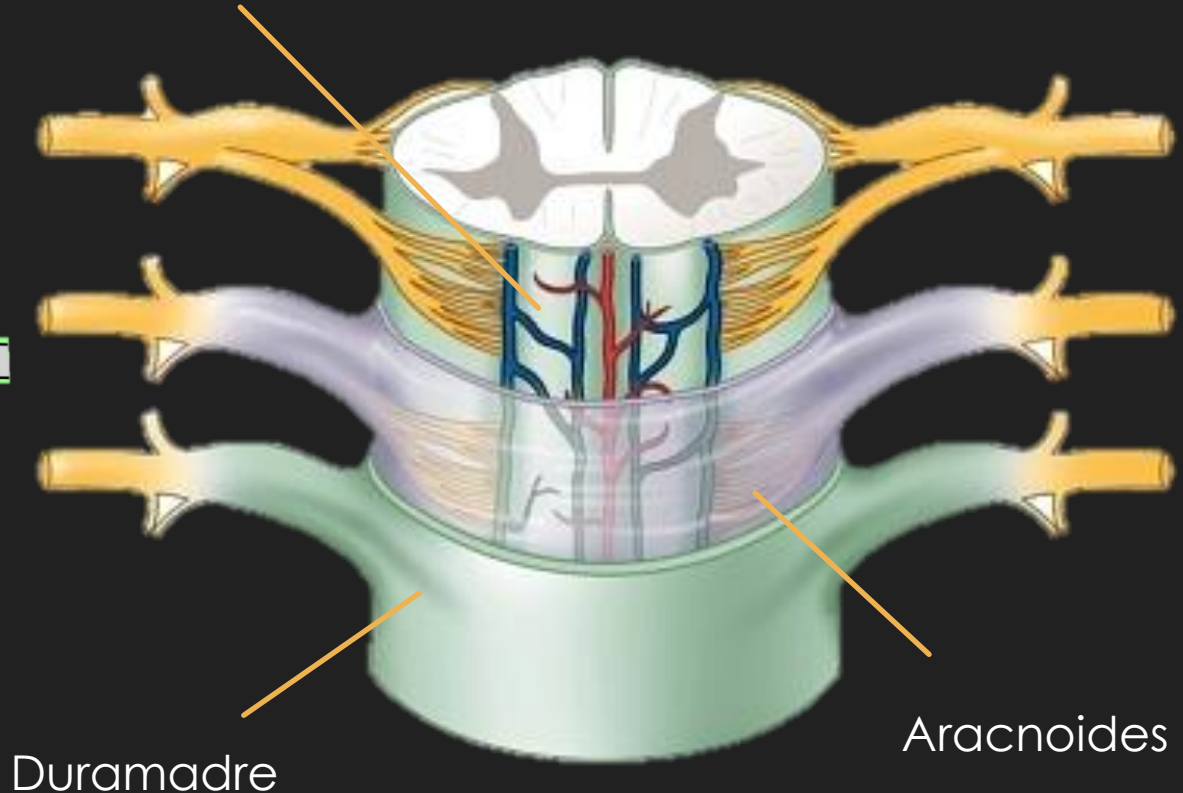
Paquimeningitis osificante

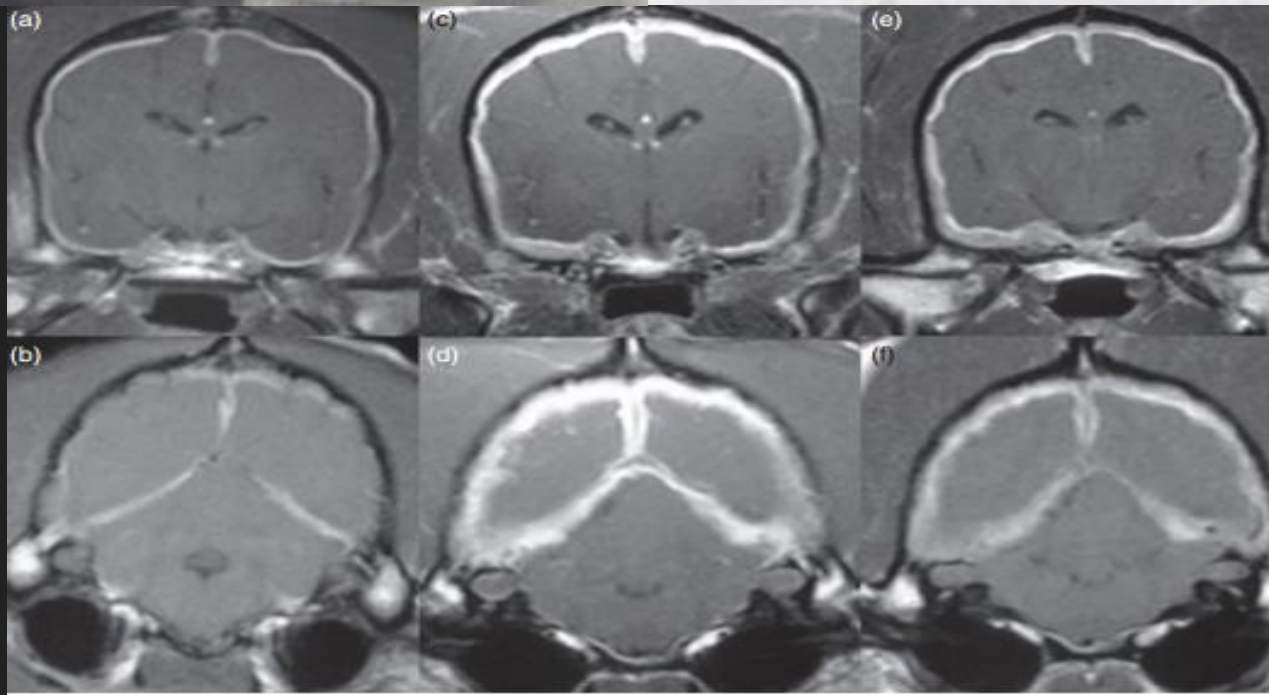
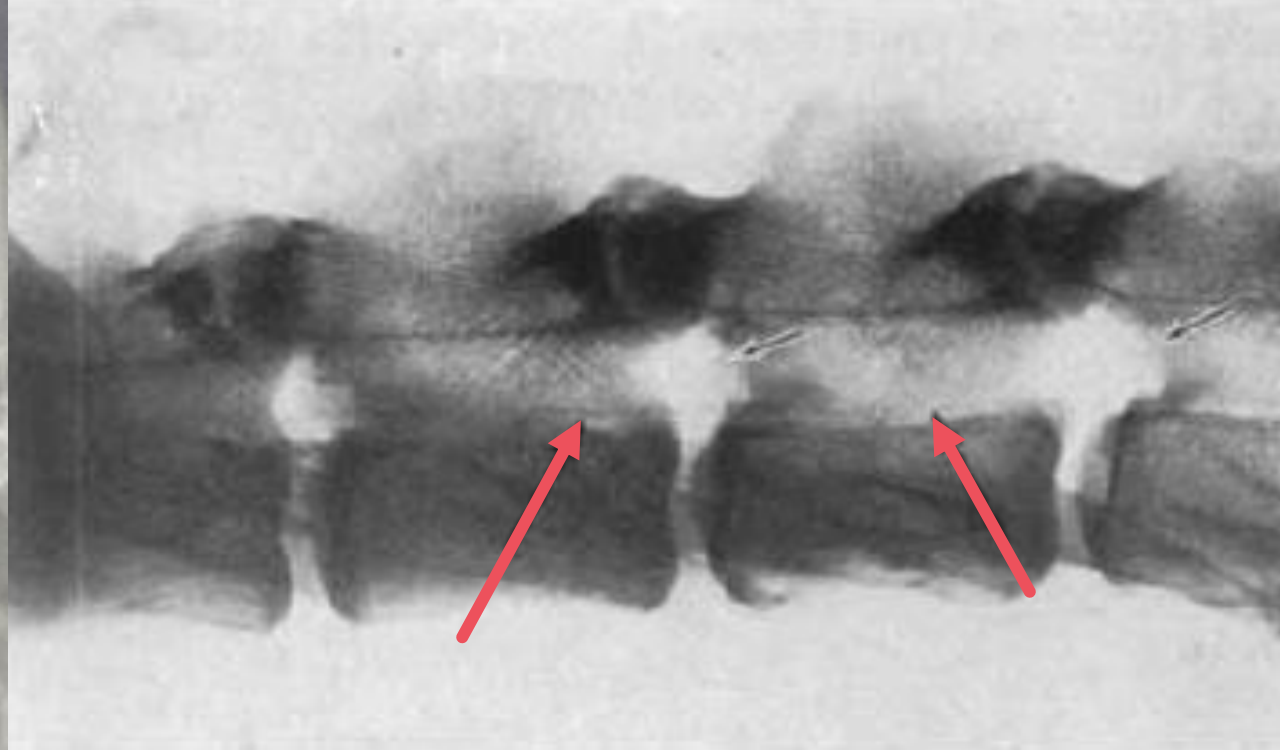
Placas Oseas en la superficie interior de la dura madre

Segmentos cervicales (C3-T1) y lumbares (L1-L6)



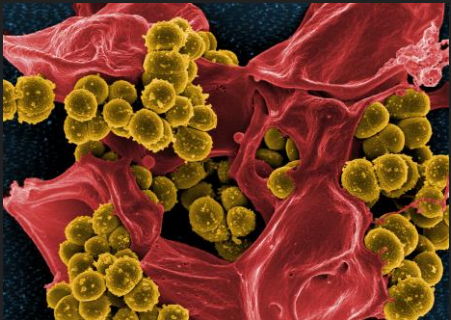
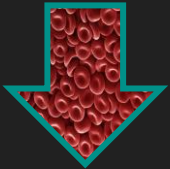
Piamadre



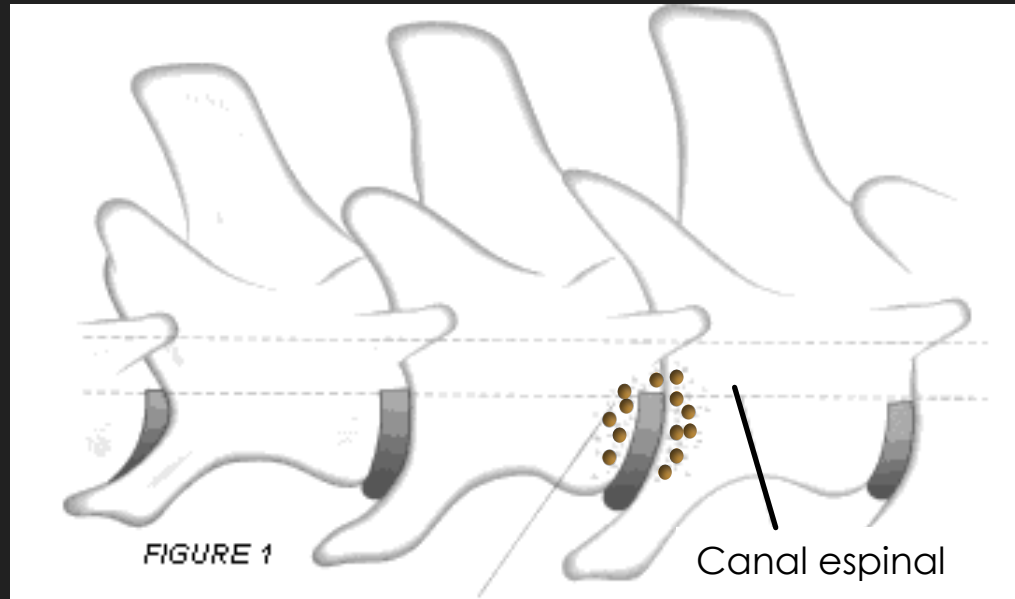
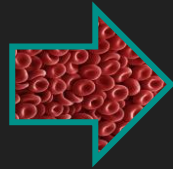


Discoespondilitis

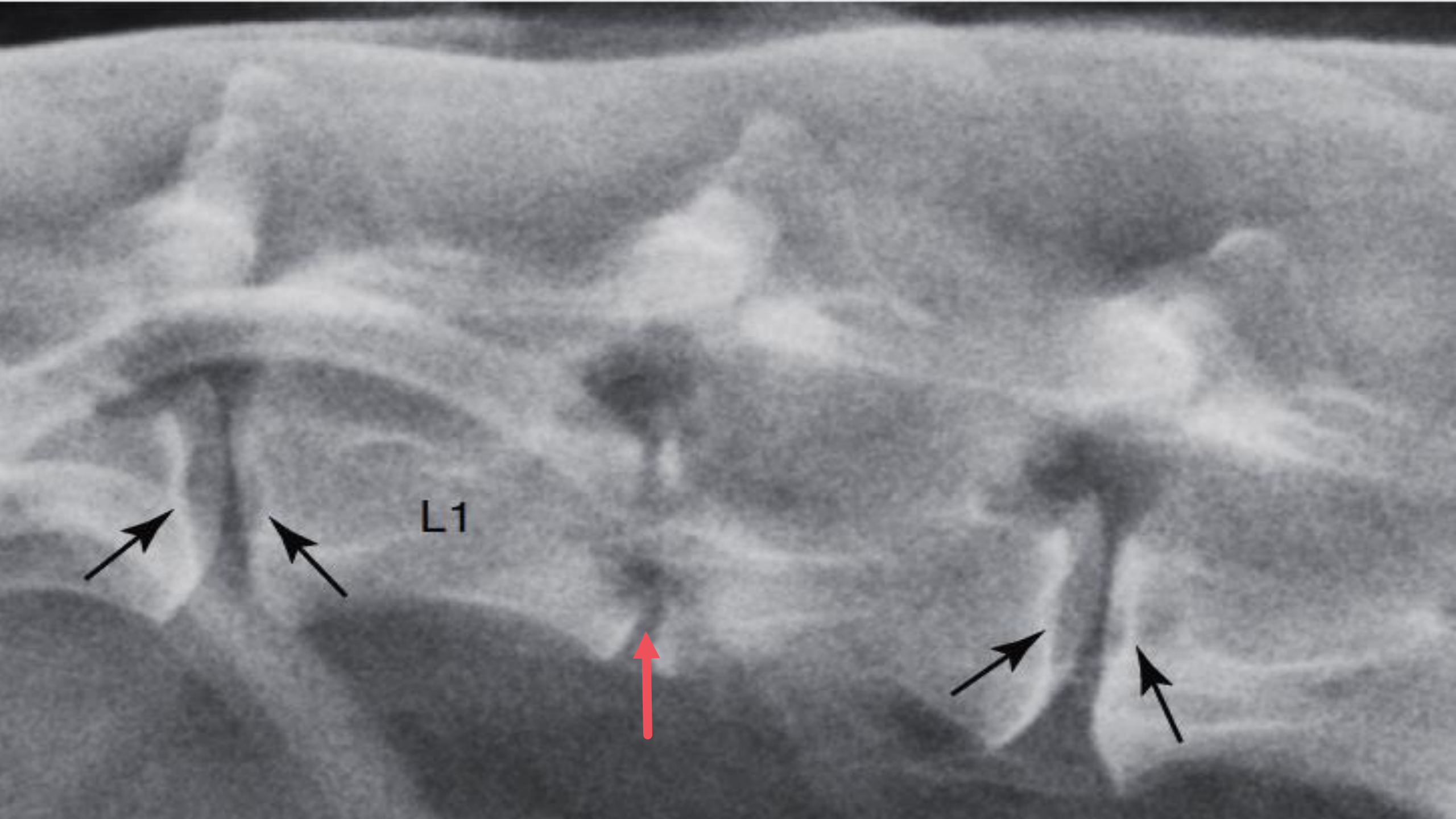
- Infecciones urinarias
- Cuerpos extraños migratorios
- Abscesos paraespinales



Staphylococcus
Streptococcus
Brucella
Escherichia coli
Levaduras

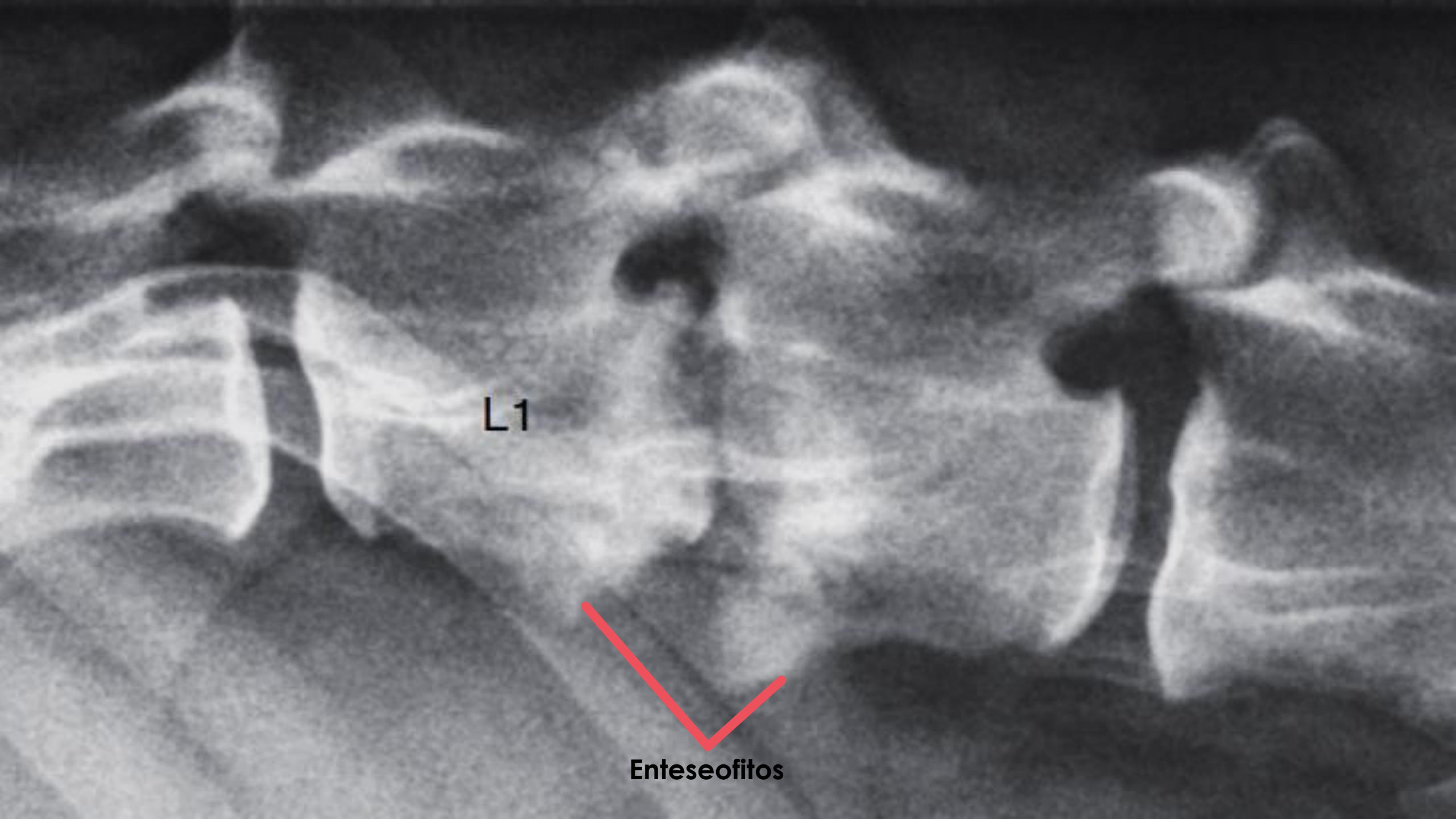


- Fiebre
- Leucopenia
- Parestesia
- Paresis
- Parálisis



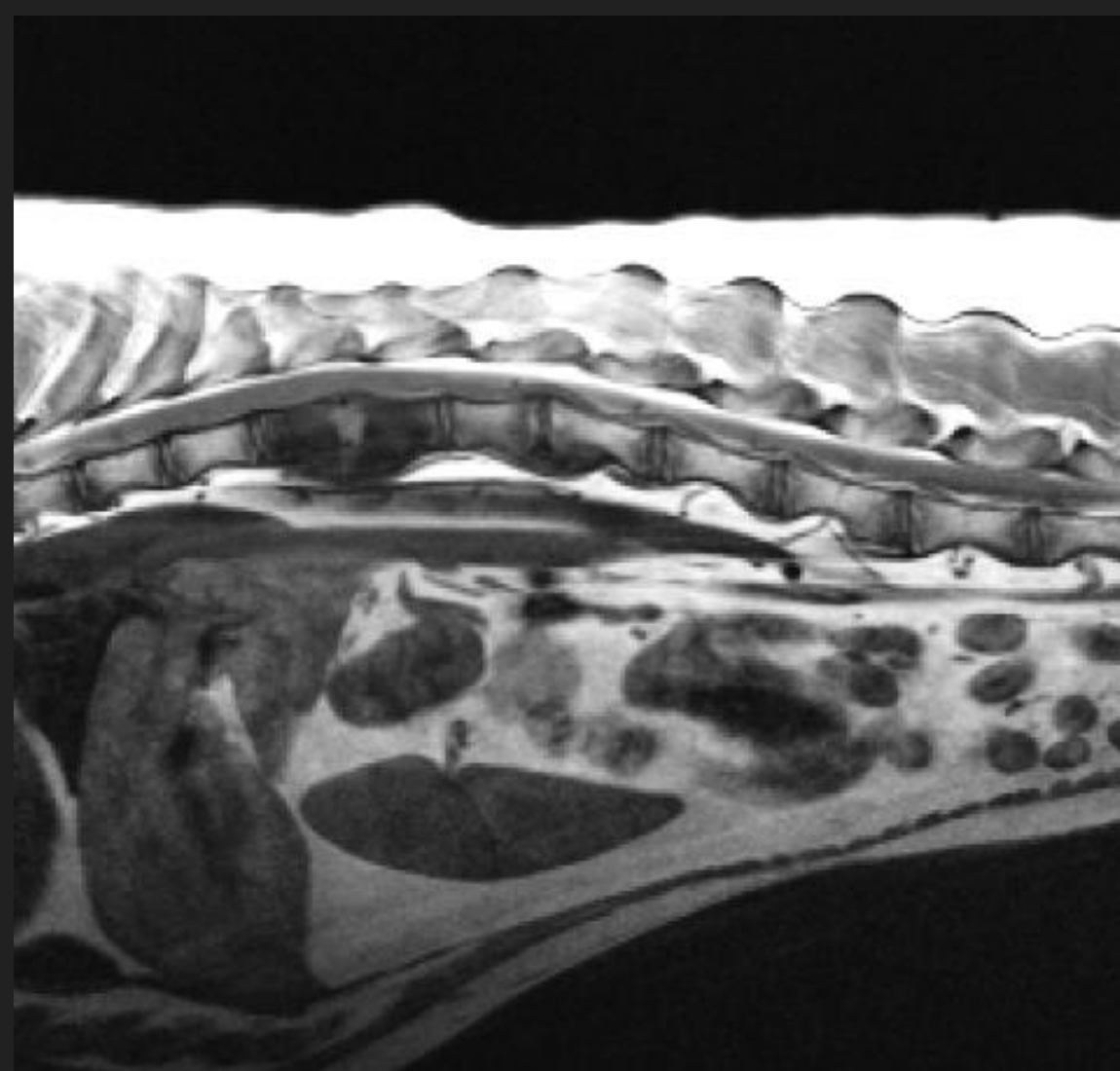
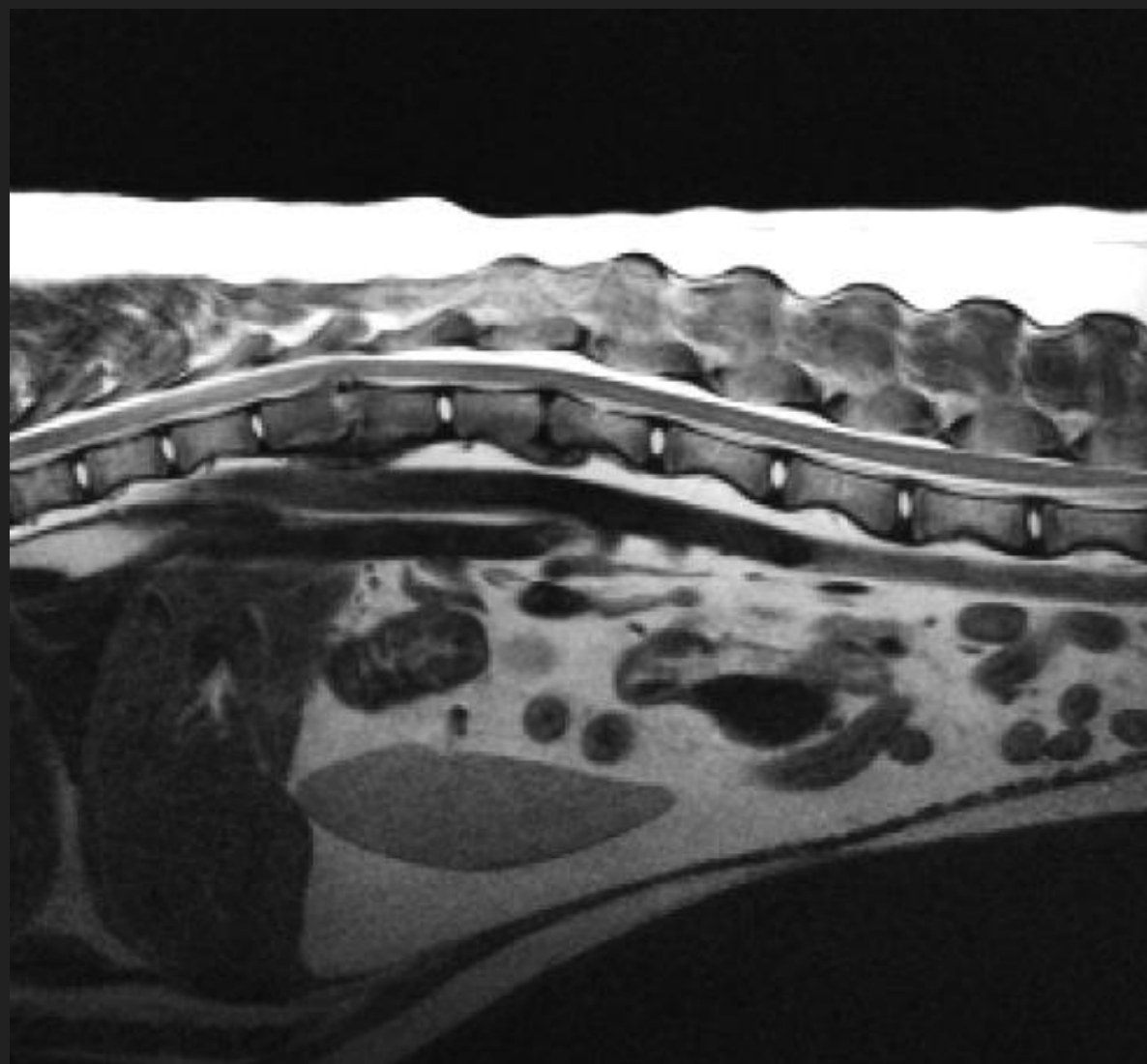
L1

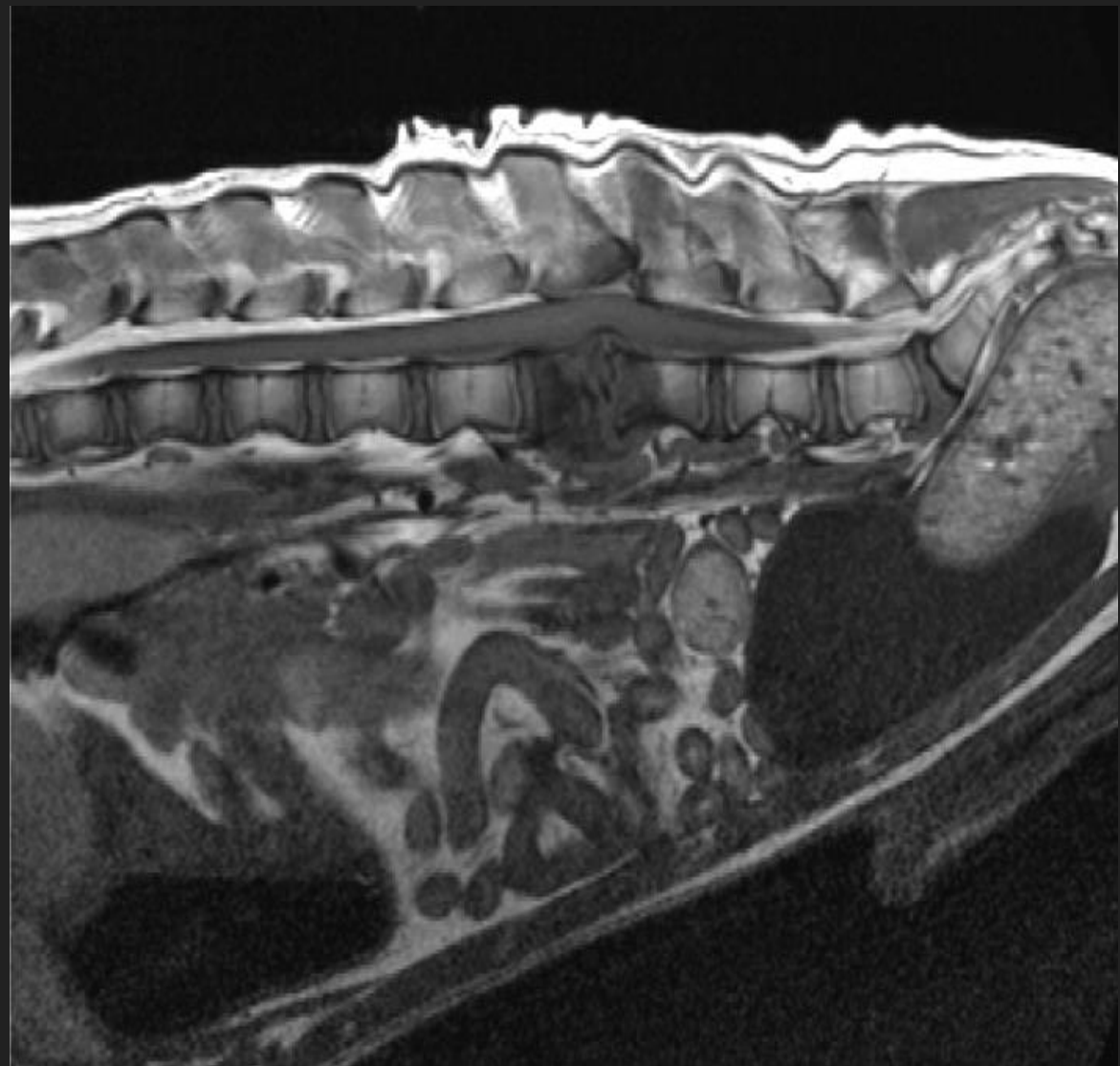
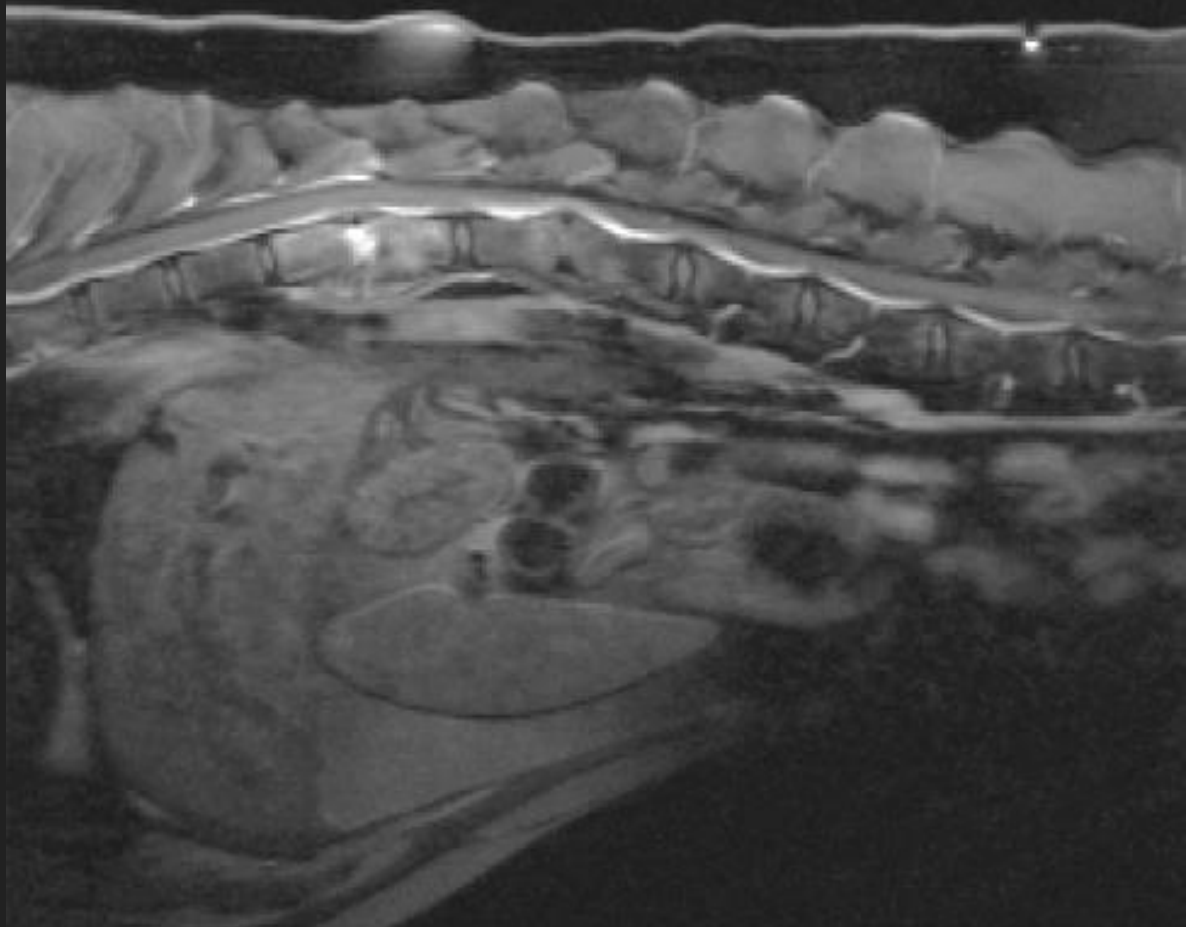




L1

Enteseofitos





BIBLIOGRAFÍA

- Brinker W.O. Piermatei D.L., Flo G.L.: (2000). Handbook of small animal orthopedics & fracture treatment. 2º Ed. W.B. Saunders Company. U:S:A.
- Dennis R., Kirberger M., Barr F.: (2010). Handbook of small animal radiology and ultrasound: Techniques and differential diagnoses. USA.
- Farrow C.S.: (1994) Radiology of the cat. Mosby. USA.
- García Real I.: (2013). Atlas de interpretación radiológica en pequeños animales. Ed. SERVET.
- Liste Burillo F.: (2010) Atlas veterinario de diagnóstico por imagen. Ed. SERVET
- Morgan P., Wolvekamp P.: (2010). Atlas de radiología : Traumatismos en el perro y el gato. SERVET
- Owens J.M, Biery D.N.: (2003) Radiographic interpretation for the small animal clinician. 2ª edition. William & Wilkins. USA.
- Schebitz S., Wilkens H.: (1999) Atlas de anatomía radiográfica canina y felina. Ed GRASS-IATROS.
- Sever R., Unzeta A.: (2008) Manual de posiciones y proyecciones radiológicas en el perro. Ed. SERVET.
- Thrall D.E.: (2010) Textbook of veterinary Diagnostic Radiology. 3ª edition. W.B. Saunders company USA.
- Vázquez A.J., Ramírez G.Z. et. al.: (2000) Atlas de anatomía clínica perro y gato. Novograf. Spain.