

An optimized bearing parameter identification approach from vibration response spectra

Rajasekhara Reddy Mutra¹, Srinivas J²

Notational Institute of Technology, Rourkela, India

¹Corresponding author

E-mail: ¹rajmech03@gmail.com, ²srin07@yahoo.co.in

Received 1 June 2018; received in revised form 12 August 2018; accepted 23 August 2018

DOI <https://doi.org/10.21595/jve.2018.20005>



Copyright © 2019 Rajasekhara Reddy Mutra, et al. This is an open access article distributed under the Creative Commons Attribution License, which permits unrestricted use, distribution, and reproduction in any medium, provided the original work is properly cited.

Abstract. In the present work, an effective identification methodology bearing dynamic parameters using measured vibration responses at the bearing is proposed. The flexible rotor is analyzed by using finite element beam model with nonlinear hydrodynamic bearing forces due to floating ring bearing supports. The frequency domain responses at different operating speeds are initially obtained in both the lateral directions. The error function is formulated as an average difference in amplitudes of two lateral displacements at a bearing node with known reference signals over a frequency range. The design variables are the speed dependent direct and cross-coupled stiffness and damping parameters of the bearing. With the side constraints on the variables, the error is minimized by using a modified particle swarm optimization scheme. The accuracy of the approach is tested with noisy input signals.

Keywords: bearing force coefficients, floating ring bearings, frequency response, hydrodynamic forces, nonlinear optimization.

1. Introduction

Identification of rotor bearing parameters is an essential task in simplifying stability analysis procedure. Especially, the bearing parameters drastically affect vibration modes and responses of a rotating system. In practice, the high-speed rotors are often supported on various types of bearings and have unbalance and coupling forces leading to complex overall dynamics. Nowadays, the fluid film bearings are widely used in such rotors in reducing critical vibration amplitudes considerably due to their high damping and stiffness forces. These time-varying supporting forces often result in highly nonlinear response signals. Moreover, such force systems employ considerable computational memory which leads to relatively slower output performances. Equivalent linear bearing parameters if identified on the other way would result in better outcomes with respect to computational requirements. Further, these parameters are speed dependent [1] and require careful identification approaches. The identification studies of bearing parameters have been presented widely for plain and aerostatic journal bearings [2-4] estimated linear and nonlinear bearing stiffness of journal bearing using perturbation technique with two-dimensional Newton-Raphson iteration method. The methodology of prediction of sixteen dynamic coefficients for journal bearings in a rotor system from experimental unbalance responses was presented in Ref. [5, 6]. A method with multi-frequency excitation for measurement of equivalent stiffness and damping of the active magnetic bearing rotor was presented [7]. From the unbalance response [8, 9] and frequency characteristics [10], similar kinds of magnetic bearing parameter identification approaches were found. For ball bearing systems, the parameters were identified with simulated and experimental data [11]. Linear and nonlinear bearing coefficients of oil-free bearings including gas-foil [12-16] and gas-film bearings [17, 18] were obtained. Response based identification methodologies for tilting pad journal bearings were also noticed [19-21].

Hydrodynamic bearing forces are highly nonlinear and parametric in nature. For hydrodynamic journal bearings, field identification method for stiffness and damping

characteristics was illustrated [22] using measured responses at both shaft and housing locations. An experimental approach was proposed [23] to estimate the stiffness and damping parameters via the least-square minimization under different operating conditions. A procedure to evaluate the rotor dynamic force coefficients of series bearing-supports was presented for impact and unbalance from the field measurements [24]. For identification of bearing parameters and unbalance from the measured responses, an optimization based strategy was proposed [25]. Qu et al. [26] explained the influence of the support stiffness on the engine vibration characteristics. Kriging surrogate model together with differential evolution optimization scheme was implemented [27, 28] to predict the bearing parameters. A modal parameter genetic time domain identification approach has been proposed [29] to study the characteristics of bearings using a multi-frequency signal decomposition technic. Prediction of bearing parameter information chart is; therefore, a very important task and a generalized methodology is, therefore, necessary to obtain the parameters conveniently. Although many studies are available in the literature, the estimation approaches based on correlating the real-time data with model-based outputs are found in limited papers. In the present work, the speed-dependent stiffness and damping parameters of the floating-ring bearing system are obtained from frequency response measurements followed by minimizing the average error in amplitudes between the actual and model-based response signals. Initially, the reference signal is obtained by analyzing the rotor-bearing system using three-dimensional beam element model of a rotor supported over floating ring bearings. The speed-dependent bearing coefficients are considered as variables and MPSO scheme is implemented to minimize the mean square error between the reference and linear idealized signals. Robustness of methodology is tested by introducing the noise into the measured reference signal. The main focus of this work is obtaining the unknown bearing stiffness and damping coefficients from the known responses in a less computational time. Measurements of lateral displacements at the bearings are simultaneously taken to achieve more accuracy in identification of parameters. Objective function considered is the sum of the mean square errors of displacements in both directions. Cross-coupled stiffness and damping coefficients are also calculated at the two bearings. In addition, the effect of stiffness of the bearing casing is accounted for obtaining the dynamic responses.

Remaining part of the paper is organized as follows: Section 2 describes the rotor-bearing system model and the expression of nonlinear bearing forces as well as the dynamic formulation of equivalent lumped parameter model of the rotor-bearing system. Section 3 presents the formulation of the objective function and optimization technique employed in the present work. Finally, the model validation along with optimization outcomes of a test case is illustrated in the results and discussion part.

2. Dynamic model of rotor bearing system

The more effective advantage of supporting action can be obtained at high speeds from dual-film hydrodynamic bearing systems such as full and semi floating-ring bearings. The response studies in high-speed rotor dynamic systems with floating ring journal bearings were thoroughly analyzed by simplified mathematical models [30-33]. The dynamic model of the flexible rotor dynamic system is formulated using quasi-finite element analysis with lumped floating ring masses considered at the bearing locations. The shaft is treated as flexible member and disks are treated as rigid. Each node has four degrees of freedom (DOF) including two translations (u, v) and two bending slopes (θ_x, θ_y). By consideration of the bending and shearing effects the kinetic and potential energy of the shaft element can be expressed as:

$$T_{element} = \int \frac{1}{2} \rho \{ A(\dot{u}^2 + \dot{v}^2) + J_d(\dot{\theta}_x^2 + \dot{\theta}_y^2) + J_p[\Omega^2 + \Omega(\dot{\theta}_x\theta_y - \dot{\theta}_y\theta_x)] \} ds, \quad (1)$$

$$U_{element} = \int \frac{1}{2} \{ EI(\theta'_x{}^2 + \theta'_y{}^2) + kGA[(\theta_y - u')^2] \} ds. \quad (2)$$

The kinetic energy of each disk can be expressed as:

$$T_d = \frac{1}{2}m_d(\dot{u}_x^2 + \dot{u}_y^2) + \frac{1}{2}I_d(\dot{\theta}_x^2 + \dot{\theta}_y^2) + \frac{1}{2}I_p[\Omega^2 + \Omega(\theta_x\theta_y - \theta_y\theta_x)]. \quad (3)$$

The virtual work done by unbalance forces at the disks can be expressed as:

$$\delta W = m_{d1}r_1\Omega^2(u_1\cos\Omega t + v_1\sin\Omega t) + m_{d2}r_2\Omega^2(u_2\cos\Omega t + v_2\sin\Omega t). \quad (4)$$

From Hamilton principle:

$$\delta \int (T - V + W) dt = 0, \quad (5)$$

with δ denotes the variational symbol, the equations of motion of the rotor alone is written as:

$$\mathbf{M}\ddot{q} + [\mathbf{C} + \Omega\mathbf{G}]\dot{q} + \mathbf{K}q = F_u + F_i. \quad (6)$$

where, q represents the displacement vector of size $N \times 1$, F_u represents both the unbalance force and gravity force vector at the disks. F_i is the inner oil film force and \mathbf{M} , \mathbf{C} , \mathbf{G} and \mathbf{K} denote respectively the assembled system mass, system damping, gyroscopic matrix of shaft and stiffness matrices assembly of size $N \times N$. The motion of the floating ring is identified with the help of inner and outer oil film hydrodynamic fluid forces, feed pressure of the lubricant and floating ring dead weight. The final motion of equation for the floating ring is written as:

$$\mathbf{M}_R\ddot{q}_R = F_{ho} - F_i, \quad (7)$$

where q_R denotes the 4×1 displacement vector of the floating rings at both bearings, $\mathbf{M}_R = \text{diag}(m_R, m_R, m_R, m_R)$ is the mass matrix of the rings with size 4×4 . The outer and inner oil film forces of floating ring bearing can be represented as F_o and F_i . By accounting the housing flexibility in the form of a single degree of freedom model with fixed mass, stiffness and damping coefficients, the combined simplified system is shown in Fig. 1.

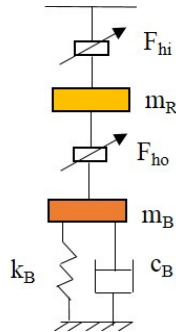


Fig. 1. Combined floating ring bearing forces with housing

The equation of motion of bearing housing of floating-ring is represented as:

$$\mathbf{M}_B\ddot{q}_B = -\mathbf{C}_B\dot{q}_B - \mathbf{K}_Bq_B - F_{ho}, \quad (8)$$

where:

$$\mathbf{M}_B = \begin{bmatrix} m_B & 0 \\ 0 & m_B \end{bmatrix}, \quad \mathbf{C}_B = \begin{bmatrix} c_{Bx} & 0 \\ 0 & c_{By} \end{bmatrix}, \quad \mathbf{K}_B = \begin{bmatrix} k_{Bx} & 0 \\ 0 & k_{By} \end{bmatrix},$$

are the corresponding 4×4 mass, damping and stiffness matrices of the bearing housings at both left and right bearings, $q_B = [x_{B1} \ y_{B1} \ x_{B2} \ y_{B2}]^T$ denotes the 4×1 displacement vector of the bearing housings. By combining the system of equations for rotor and bearing, the assembled equations are represented as:

$$\mathbf{M}_{\tilde{q}} + \tilde{\mathbf{C}}_{\tilde{q}} + \mathbf{K}_{\tilde{q}} = \tilde{\mathbf{F}}, \quad (9)$$

where:

$$\tilde{\mathbf{M}} = \begin{bmatrix} \mathbf{M} & 0 & 0 \\ 0 & \mathbf{M}_R & 0 \\ 0 & 0 & \mathbf{M}_B \end{bmatrix}, \quad \tilde{\mathbf{C}} = \begin{bmatrix} \mathbf{C} + \Omega \mathbf{G} & 0 & 0 \\ 0 & 0 & 0 \\ 0 & 0 & \mathbf{C}_B \end{bmatrix}, \quad \tilde{\mathbf{K}} = \begin{bmatrix} \mathbf{K} & 0 & 0 \\ 0 & 0 & 0 \\ 0 & 0 & \mathbf{K}_B \end{bmatrix},$$

are effective $(N + 8) \times (N + 8)$ square matrices, while $\tilde{q} = [q \ q_R \ q_B]^T$ is $(N + 8) \times 1$ vector of displacements and $\tilde{F} = \tilde{F}_u + \tilde{F}_b + \tilde{F}_g$ is resultant $(N + 8) \times 1$ force vector of unbalance, bearing and gravity forces.

2.1. Floating-ring bearing with elastic housing

A floating ring bearing (FRB) has an annular ring placed in-between the journal and sleeve and there is a thin oil film in-between them. The bearing mid-plane consists of the circumferential feed grooves and the lubricant is fed from the journal to the sleeve via a bunch of feed holes located in the ring. The coordinate system considered is shown in Fig. 2.

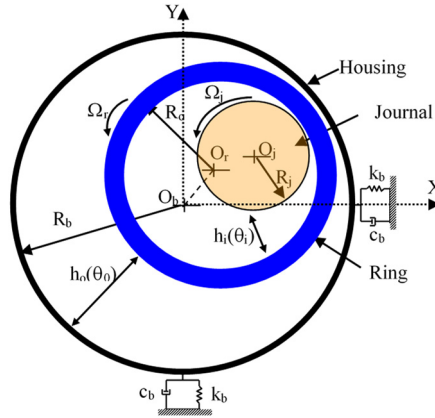


Fig. 2. Geometry of the floating-ring bearing with housing elasticity

With the help of the film pressure distribution, the hydrodynamic fluid forces can be derived from 2-D Reynold's equation. Reynolds equations for both inner and outer lubricant films can be expressed as follows:

$$\frac{1}{R_j^2} \frac{\partial}{\partial \theta_i} \left(\frac{h_i^3}{12\mu_i} \frac{\partial p_i}{\partial \theta_i} \right) + \frac{\partial}{\partial z_i} \left(\frac{h_i^3}{12\mu_i} \frac{\partial p_i}{\partial z_i} \right) = \frac{\Omega_j + \Omega_r}{2} \frac{\partial h_i}{\partial \theta_i} + \frac{\partial h_i}{\partial t}, \quad (10)$$

$$\frac{1}{R_o^2} \frac{\partial}{\partial \theta_o} \left(\frac{h_o^3}{12\mu_o} \frac{\partial p_o}{\partial \theta_o} \right) + \frac{\partial}{\partial z_o} \left(\frac{h_o^3}{12\mu_o} \frac{\partial p_o}{\partial z_o} \right) = \frac{\Omega_r}{2} \frac{\partial h_o}{\partial \theta_o} + \frac{\partial h_o}{\partial t}, \quad (11)$$

where p is the pressure of the oil film, and μ represents the viscosity of the lubricating oil, the subscripts i and o denote the parameters of inner oil film and outer oil film, respectively. While the subscripts j and r indicate the parameters between the journal and floating ring. R_j and R_o

correspond to the journal and floating ring outer radius, respectively. θ is the angular coordinate for the inner and outer oil films. The axial coordinates of the inner and outer films are denoted by z_i and z_o respectively. The simplified expressions for oil film thicknesses and the film pressure distributions are expressed by considering Octvick's theory of short bearings as:

$$h_i(\theta_i, t) = C_1 - x_j \cos \theta_i - y_j \sin \theta_i, \quad (12)$$

$$h_o(\theta_o, t) = C_2 - X_r \cos \theta_o - Y_r \sin \theta_o, \quad (13)$$

$$p_i = \frac{3\mu_i}{h_i^3} \left(Z_i^2 - \frac{L_i^2}{4} \right) \{ [(\Omega_j + \Omega_r)x_j - 2\dot{y}_j] \sin \theta_i - [(\Omega_j + \Omega_r)y_j + 2\dot{x}_j] \cos \theta_i \}, \quad (14)$$

$$p_o = \frac{3\mu_o}{h_o^3} \left(Z_o^2 - \frac{L_o^2}{4} \right) [(\Omega_r X_r - 2\dot{Y}_r \Omega_r) \sin \theta_o - (\Omega_r Y_r + 2\dot{X}_r) \cos \theta_o], \quad (15)$$

$$\begin{cases} x_j = X_j - X_r, \\ y_j = Y_j - Y_r, \end{cases} \quad (16)$$

$$\begin{cases} \dot{x}_j = \dot{X}_j - \dot{X}_r, \\ \dot{y}_j = \dot{Y}_j - \dot{Y}_r, \end{cases} \quad (17)$$

where (X_j, Y_j) is the displacement vector of the journal center O_j in the fixed reference frame. Also, C_1 and C_2 represent the static clearances of inner and outer film regions. The absolute displacement and velocity components of the floating ring center O_r are (X_r, Y_r) and (\dot{X}_r, \dot{Y}_r) while the absolute velocities of centers O_j are denoted as (\dot{X}_j, \dot{Y}_j) . The lower case letters (x_j, y_j) , (\dot{x}_j, \dot{y}_j) denote the displacement and velocity components of O_j relative to O_r . The final expressions for inner and outer oil film force components are written as [34]:

$$\begin{Bmatrix} F_{ix} \\ F_{iy} \end{Bmatrix} = \mu_i (\Omega_j + \Omega_r) R_j L_i \left(\frac{R_j}{C_1} \right)^2 \left(\frac{L_i}{2R_j} \right)^2 \begin{Bmatrix} f_{ix} \\ f_{iy} \end{Bmatrix}, \quad (18)$$

$$\begin{Bmatrix} F_{ox} \\ F_{oy} \end{Bmatrix} = \mu_o \Omega_r R_o L_o i \left(\frac{R_o}{C_2} \right)^2 \left(\frac{L_o}{2R_o} \right)^2 \begin{Bmatrix} f_{ox} \\ f_{oy} \end{Bmatrix}, \quad (19)$$

where the detailed expression for $f_{ix}, f_{iy}, f_{ox}, f_{oy}$ are given in the Appendix.

3. Methodology and optimization technique

The bearing force components are expressed in terms of displacements and velocities in bearing coordinates as:

$$\begin{Bmatrix} \tilde{F}_{Bx} \\ \tilde{F}_{By} \end{Bmatrix} = \begin{bmatrix} c_{xx} & c_{xy} \\ c_{yx} & c_{yy} \end{bmatrix} \begin{Bmatrix} \dot{x}_B \\ \dot{y}_B \end{Bmatrix} + \begin{bmatrix} k_{xx} & k_{xy} \\ k_{yx} & k_{yy} \end{bmatrix} \begin{Bmatrix} x_B \\ y_B \end{Bmatrix}, \quad (20)$$

where the terms c and k represent the unknown damping and stiffness bearing force coefficients. The direct and cross-coupled terms are denoted by suffices xx, yy and xy respectively. The suffix B denotes the bearing support location. By substituting these bearing forces into the Eq. (9) and converting to the frequency domain, the system of equations can be rewritten as:

$$\begin{Bmatrix} F_x \\ F_y \end{Bmatrix} - \omega^2 \tilde{\mathbf{M}} \begin{Bmatrix} X \\ Y \end{Bmatrix} = \begin{bmatrix} H_{xx} & H_{xy} \\ H_{yx} & H_{yy} \end{bmatrix} \begin{Bmatrix} X \\ Y \end{Bmatrix}, \quad (21)$$

where, $H_{ij}(\omega) = k_{ij}(\omega) + i\omega c_{ij}(\omega)$ is impedance function, (F_x, F_y) and (X, Y) are the discrete Fourier transforms of external forces and displacements respectively. With the knowledge of the component displacements in bending directions at any location on the rotor, it is possible to

compute the twelve force coefficients corresponding to each of the two bearings. In order to obtain the correct set of parameters, an error function defined in terms of X and Y amplitudes at the bearing nodes is considered at every operating speed. Mathematical formulation of the optimization problem in the current context is stated as:

$$\text{Minimize } E = \frac{1}{2n} \sum_{i=1}^n (X_{NBF_i} - X_{L_i})^2 + (Y_{NBF_i} - Y_{L_i})^2, \quad (22)$$

where X_{NBF_i} and Y_{NBF_i} are the reference amplitudes obtained from the nonlinear force model, while X_{L_i} and Y_{L_i} are the corresponding displacement amplitude of frequency response via linear bearing forces. Here, n denotes the total number of sample points considered in frequency-domain. This error E is an implicit function of bearing coefficients which are defined with upper and lower bounds.

3.1. Particle swarm optimization (MPSO) with mutation

Conventional particle swarm optimization scheme is one of the robust metaheuristic optimization methods works on the behavior of flocking birds/fish during the food search [35]. Initially, with the random set of solutions, the system starts and searches for optimum value by updating the generations. The particle is described as each candidate solution and set of particles is known as a swarm. In a cooperative manner, they move in n -dimensional search space. The variable velocity performs the swarm movement of each particle. This velocity is influenced by social and local factors. Each particle moves through the search space based on the best positions found so far by itself (P_{best}) and the best position found by the swarm (G_{best}). In search space R^k (with k initial sets) for each particle, the objective function value is calculated. If $S(n)$ and $Vel(n)$ are position and velocity of each particle at n th iteration, movements of each particle are influenced by three factors (i) own direction search of Particle (ii) Particle best position itself (iii) whole swarms best position. The position and velocity of every particle after iteration number n is updated using the following equation:

$$Vel(n + 1) = u \times Vel(n) + c_1 r_1 (P_{best} - S(n)) + c_2 r_2 (G_{best} - S(n)), \quad (23)$$

$$S(n + 1) = S(n) + Vel(n + 1), \quad (24)$$

where u is called inertia factor of the particle, which often reduced in every cycle. Acceleration coefficients c_1 and c_2 describe the private (cognitive) and global (social) behavior of the system. Also, r_1 and r_2 are random numbers between 0 and 1. P_{best} is the best position of particle till the current iteration while G_{best} is the best position of the group until current iteration. The algorithm converges to the best swarm by selecting the correct values of u , c_1 and c_2 . Further, the velocity of the particle is bounded between the minimum and maximum values. Premature convergence can take place under different situations such as (i) the population has converged to local optima, (ii) the population has lost its diversity resulting in the search algorithm to proceed slowly. In this regard, to attain faster convergence without loss of accuracy, several modifications were suggested. To improve the population diversity and PSO's performance, mutation is a powerful tool [36]. Here, a correction to the updated vector $S(n + 1)$ in every cycle is introduced. This approach evaluates a mutation vector created from randomly selected three swarms (vectors, Y_{B1} , Y_{B2} and Y_{B3}) in that generation. Fig. 3 shows the flowchart of the MPSO approach. The termination criterion employed in the present work is to achieve the maximum number of generations or to attain the error tolerance in successive objective function values whichever reaches earlier.

Mathematically, mutation vector (Y_{mut}) is expressed as [37]:

$$Y_{mut} = Y_{B1} + \gamma * (Y_{B2} - Y_{B3}), \quad (25)$$

where $\gamma^* \in [0.9, 1]$ is the mutation constant.

The resultant population is modified using this mutation vector according to the following rule:

$$Y_{new,i} = \begin{cases} Y_{mut,i}, & (rand < p_{cross}), \\ Y_i, & \forall i = 1, 2, \dots, k. \end{cases} \quad (26)$$

Here, k is the number of points in the population (swarm size). The p_{cross} is crossover probability selected in the range of 0.1 to 0.9.

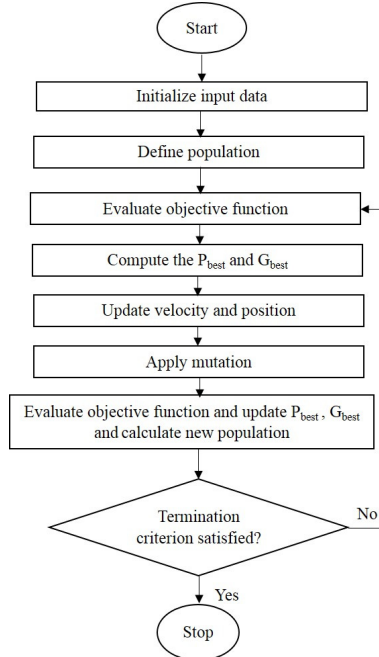


Fig. 3. Flowchart of MPSO

4. Results and discussion

In order to examine the potentiality of the objective function, the simulated frequency response is initially generated from the rotor system with a linear bearing model having certain known input bearing force coefficients. This reference signal with input bearing force coefficients is provided to the optimization program and the bearing parameters are retrieved back through the error minimization procedure. The rotor is analyzed by finite element model using Timoshenko beam elements having two bending deflections and slopes at each node.

There are eight elements and nine nodes and total degrees of freedom are equal to 36. The discs are mounted at nodes 1 and 9, while the bearing nodes are at 3 and 7 as shown in Fig. 4.

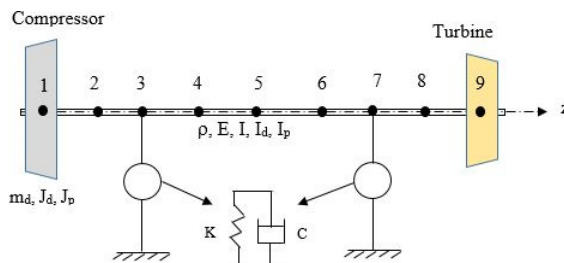


Fig. 4. Finite element model of the rotor-bearing system

Dimensional data of the rotor system is represented in Table 1.

Table 1. Dimensional data of rotor system [32]

Properties	Value
Shaft material density ρ (kg/m ³)	7800
Left disk mass M_{D1} (kg)	1.4
Right disk mass, M_{D2} (kg)	1
Left disk diameter moment of inertia, I_{D1} (kgm ⁻²)	6.3×10^{-4}
Right disk diameter moment of inertia, I_{D2} (kgm ⁻²)	4.5×10^{-4}
Left disk polar moment of inertia, J_{D1} (kgm ⁻²)	1.26×10^{-5}
Right disk polar moment of inertia, J_{D2} (kgm ⁻²)	9×10^{-4}
Rotor diameter, D_{sh} (m)	0.02
Rotor length, (m)	0.4
Young's modulus, E (GPa)	200
Radius of bearing (m)	0.01
Length of bearing (m)	0.01
Radial clearance of bearing (microns)	200
Viscosity of Oil film (Pa-s)	288×10^{-4}
Eccentricity (m)	1×10^{-6}

The dynamic equations are solved by using fourth order Runge-Kutta time integration method with zero initial conditions. Fig. 5 shows the frequency response obtained at the left bearing node at a rotor speed of 5000 rpm. As the peak modes are occurring over the range 0-100 Hz, within this span the amplitudes are accounted in the objective function.

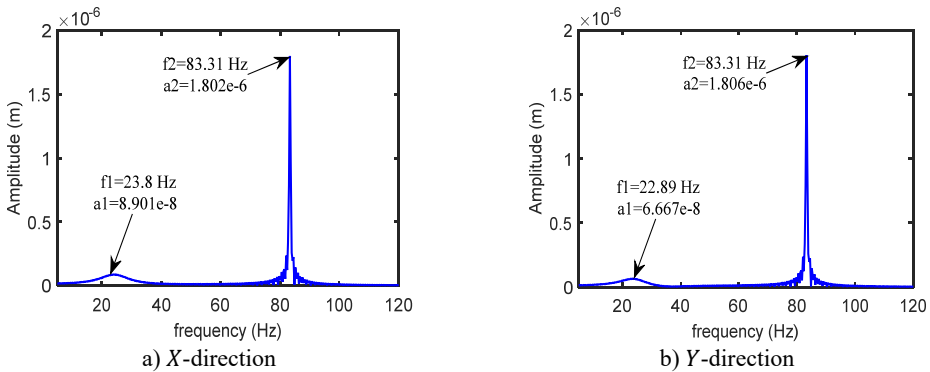


Fig. 5. Frequency domain response at left bearing ($k_{xx} = 0.25$ Mn/m, $k_{xy} = 0.12$ Mn/m, $k_{yy} = 0.275$ Mn/m, $c_{xx} = 300$ Ns/m, $c_{xy} = 20$ Ns/m, $c_{yy} = 399$ Ns/m)

The PSO parameters are taken as: $c_1 = c_2 = 2.1$ and $u = u_{max} - j((u_{max} - u_{min})/j_{max})$, where u_{max} is maximum weight, u_{min} is minimum weight, j is iteration number and j_{max} is maximum iterations. In present study, $u_{max} = 0.9$ and $u_{min} = 0.4$. The variable bounds are taken as: $k_{mn} \in [10$ kN/m, 5 MN/m], $c_{mn} \in [10$ N-s/m, 5000 N-s/m]. Fig. 6 shows the final error achieved for different swarm sizes at a rotor speed 5000 rpm. The minimum error occurs at a swarm size of 30.

Fig. 7 shows the fitness function convergence using proposed MPSO with a swarm size of 30 along with standard PSO scheme. It is seen that MPSO converges at a faster rate.

Table 2 shows the obtained bearing parameters as optimized design variables. The identified direct and cross-coupled parameters are found close to the reference values. Furthermore, the noise is added to the response signal for predicting the accuracy of identification. In this regard, random signal is added as a fraction of original signal. The percentage deviation is relatively small with the added input noise the frequency response.

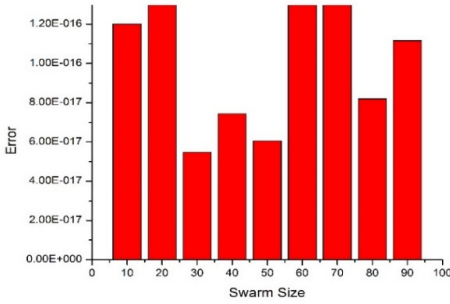


Fig. 6. Effect of swarm size in MPSO on converged error

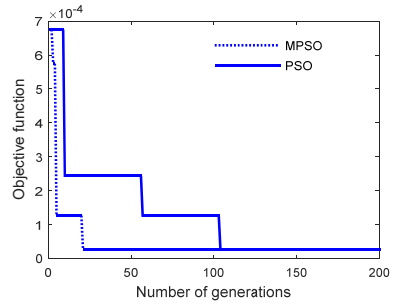


Fig. 7. Objective function convergence in PSO and MPSO

Table 2. Assumed and estimated bearing parameters for linear rotor model

Parameter	Reference values	Without noise	With 5 % noise	With 10 % noise
$k_{xx1} \times 10^{-5}$ (N/m)	2.50	2.532	2.554	2.591
$k_{xy1} \times 10^{-5}$ (N/m)	1.20	1.211	1.218	1.221
$k_{yy1} \times 10^{-5}$ (N/m)	2.75	2.763	2.799	2.825
$k_{xx2} \times 10^{-5}$ (N/m)	2.75	2.778	2.785	2.798
$k_{xy2} \times 10^{-5}$ (N/m)	1.46	1.465	1.476	1.483
$k_{yy2} \times 10^{-5}$ (N/m)	2.82	2.832	2.892	2.934
c_{xx1} (Ns/m)	300	303.24	303.94	304.64
c_{xy1} (Ns/m)	20	20.12	20.69	20.94
c_{yy1} (Ns/m)	399	400.91	401.15	402.27
c_{xx2} (Ns/m)	315	316.98	317.84	319.58
c_{xy2} (Ns/m)	59	59.25	59.64	59.92
c_{yy2} (Ns/m)	300	302.54	302.81	303.47

4.1. Rotor supported on floating-ring bearings

With floating ring nonlinear bearing forces, the rotor response is obtained from the same finite element model of the rotor. This time, the speed-varying equivalent bearing force parameters are obtained. Table 3 shows the bearing parameters employed in the simulation.

Table 3. Floating-ring bearing parameters considered [32]

Parameter	Value
Bearing outer clearance C_2 (m)	8×10^{-5}
Bearing inner clearance C_1 (m)	2×10^{-5}
Mass of the ring m_r (kg)	0.02
Inner film viscosity μ_i (Pa-s)	0.006
Outer film viscosity μ_o (Pa-s)	0.012

The time responses and frequency spectra in two directions are obtained at different operating speeds. The stiffness, damping, and mass of the bearing casing are respectively considered as 100 kN/m, 100 Ns/m and 0.1 kg. Fig. 8 shows the frequency spectra at a speed of 5000 rpm with and without accounting the casing stiffness. It is seen that there are two critical frequencies (at 83 Hz and 120 Hz) in the first case without casing flexibility. Furthermore, the subharmonic resonances resulting from hydrodynamic bearing forces are relatively small at this speed of operation [38]. With casing flexibility taken into account, it is observed that an additional mode in each direction results. The amplitude of the main dominating peak became small in both the directions as an absorber effect.

In order to identify the bearing coefficients, the response data is given as input to the optimization program. The same error function is further minimized by other well-known

meta-heuristic optimization methods namely genetic algorithms (GA) [39] and simulated annealing (SA) [40]. In GA, population sizes of 30 along with mutation and crossover functions selected as constraint dependent and scattered type respectively. In SA also the function tolerance is considered as 10^{-6} . The annealing function used is fast annealing type and the reannealing interval considered as 100. The error function value obtained, and computation time taken in all three approaches are depicted in Table 4.

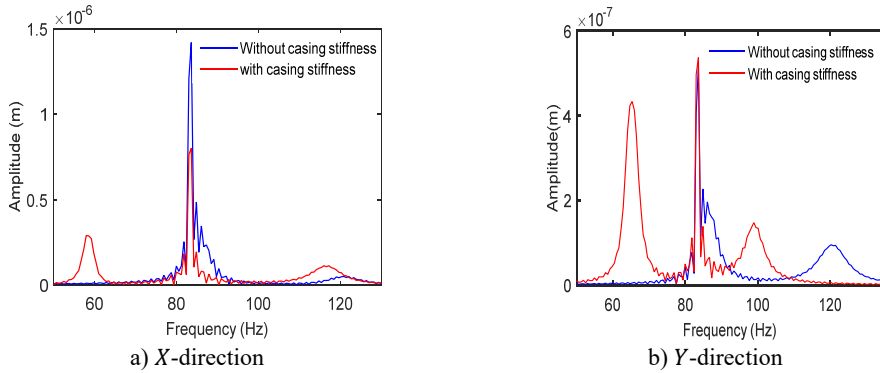


Fig. 8. Frequency spectra at left bearing

Table 4. Performance comparison of various optimization schemes

Method	Error	Time (s)
MPSO	5.49e-17	140
GA	1.083e-14	155
SA	1.082e-11	185

It is seen that the MPSO is relatively good in terms of both accuracy and computational time. Table 5 shows the identified bearing stiffness coefficients at different operating speeds obtained from MPSO.

The corresponding identified damping parameters are given in Table 6.

Table 7 shows changes in the identified parameters at a rotor speed of 10,000 rpm with added noise in the frequency response. It is observed that the average error is well below 4 %.

Using the identified parameter data, the response at the left bearing node is further obtained from the finite element model and is shown in Fig. 9. The corresponding response with floating ring bearing forces at 10,000 rpm is also illustrated for comparison. The response spectrum is well matching with marked resonant peaks.

Table 5. Identified stiffness coefficients of the bearings at different speeds

Sl. No	Speed (rpm)	Bearing-1			Bearing-2		
		k_{xx1} (MN/m)	k_{yy1} (MN/m)	k_{xy1} (MN/m)	k_{xx2} (MN/m)	k_{yy2} (MN/m)	k_{xy2} (MN/m)
1	1000	3.1501	3.43912	1.2102	2.916827	3.145741	1.4651
2	2000	3.0110	3.45786	1.2113	2.81801	3.31343	1.4865
3	3000	3.0011	3.81297	1.2236	2.803257	3.621957	1.5135
4	4000	3.0001	4.16761	1.2258	2.758222	3.681405	1.5364
5	5000	2.9140	4.37417	1.3451	2.637015	3.83408	1.5412
6	6000	2.8466	4.62592	1.8684	2.45915	4.086198	1.5945
7	7000	2.8141	4.88159	2.2687	2.38048	4.15605	1.6124
8	8000	2.7957	5.27948	2.5587	2.193331	4.234727	1.6354
9	9000	2.8511	5.67308	2.6869	2.043291	4.327847	1.6589
10	10000	2.9534	5.95391	2.7246	2.006007	4.543091	1.6758

Table 6. Identified damping coefficients of the bearings at different speeds

Sl.no	Speed (rpm)	Bearing-1			Bearing-2		
		c_{xx1} (MNs/m)	c_{yy1} (MNs/m)	c_{xy1} (MNs/m)	c_{xx2} (MNs/m)	c_{yy2} (MNs/m)	c_{xy2} (MNs/m)
1	1000	0.00434	0.0049	0.00028	0.004291	0.004923	0.00035
2	2000	0.004238	0.00479	0.00029	0.003912	0.004835	0.00036
3	3000	0.004138	0.00492	0.00031	0.003839	0.004723	0.00039
4	4000	0.003924	0.0050	0.00035	0.003792	0.004957	0.00041
5	5000	0.003748	0.00511	0.00039	0.004001	0.005085	0.00042
6	6000	0.00386	0.00549	0.00041	0.004182	0.00533	0.00043
7	7000	0.00398	0.00568	0.00043	0.004314	0.005711	0.00046
8	8000	0.004002	0.00583	0.00043	0.004408	0.005877	0.00049
9	9000	0.004149	0.00606	0.00043	0.004693	0.005916	0.00050
10	10000	0.004316	0.00627	0.00043	0.004942	0.006178	0.00512

Table 7. Identified bearing parameters with added noise at 10,000 rpm

Parameter	Without noise	With 5 % noise	With 10 % noise
k_{xx1} (MN/m)	2.9534	2.974	2.991
k_{xy1} (MN/m)	2.7246	2.754	2.785
k_{yy1} (MN/m)	5.95391	5.995	6.024
k_{xx2} (MN/m)	2.00600	2.012	2.098
k_{xy2} (MN/m)	1.6758	1.694	1.701
k_{yy2} (MN/m)	4.543091	4.578	4.597
c_{xx1} (MNs/m)	0.004316	0.00451	0.0047
c_{xy1} (MNs/m)	0.00043	0.00047	0.0005
c_{yy1} (MNs/m)	0.00627	0.00635	0.0064
c_{xx2} (MNs/m)	0.004942	0.00501	0.0052
c_{xy2} (MNs/m)	0.00512	0.00534	0.0054
c_{yy2} (MNs/m)	0.006178	0.00628	0.0064

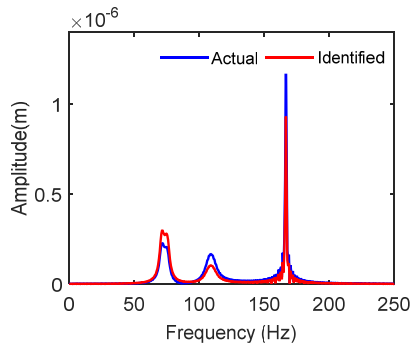


Fig. 9. Comparison of frequency response at left bearing node (10,000 rpm)

5. Conclusions

In this work, bearing force parameter identification procedure was illustrated with available frequency spectra in a rotor dynamic system. Flexible rotor system was analyzed by using a finite element model and the frequency domain responses at different rotor speeds were considered. An error-based formulation in terms of response amplitudes at bearing nodes was employed and the speed dependent stiffness and damping parameters of the bearings were identified via modified particle swarm optimization with the mutation. The methodology was found to be reliable and predicts the coefficients with limited computation effort. Robustness of methodology was tested by introducing the noise into the measured reference signals. The average error was not exceeding

four percent. The average time for function evaluation can be further minimized by employing an approximate solution technique for solving nonlinear dynamic equations for achieving directly the frequency spectrum without the need of time domain analysis. Alternatively, surrogate models via neural networks may also be employed to avoid the complex time-domain calculations.

Acknowledgements

The authors are grateful to the National Institute of Technology, Rourkela, Odisha, India for extending their facilities to carry out the research work.

References

- [1] **Tiwari R., Lees A. W., Friswell M. I.** Identification of dynamic bearing parameters: a review. *The Shock and Vibration Digest*, Vol. 36, 2004, p. 99-124.
- [2] **Meruane V., Pascual R.** Identification of nonlinear dynamic coefficients in plain journal bearings. *Tribology International*, Vol. 41, 2008, p. 743-754.
- [3] **Kozánek J., Šimek J., Steinbauer P., Bílkovský A.** Identification of stiffness and damping coefficients of aerostatic journal bearing. *Engineering Mechanics*, Vol. 16, 2009, p. 209-20.
- [4] **Choy F. K., Braun M. J., Hu Y.** Nonlinear effects in a plain journal bearing: part 1 – analytical study. *Journal of Tribology*, Vol. 113, 1991, p. 555-561.
- [5] **Tieu A. K., Qiu Z. L.** Identification of sixteen dynamic coefficients of two journal bearings from experimental unbalance responses. *Wear*, Vol. 177, 1994, p. 63-69.
- [6] **Qiu Z. L., Tieu A. K.** Identification of sixteen force coefficients of two journal bearings from impulse responses. *Wear*, Vol. 212, 1997, p. 206-212.
- [7] **Jiang K., Zhu C., Chen L., Qiao X.** Multi-DOF rotor model-based measurement of stiffness and damping for active magnetic bearing using multi-frequency excitation. *Mechanical Systems and Signal Processing*, Vol. 60, Issue 61, 2015, p. 358-374.
- [8] **Zhou J., Di L., Cheng C., Xu Y., Lin Z.** A rotor unbalance response based approach to the identification of the closed-loop stiffness and damping coefficients of active magnetic bearings. *Mechanical Systems and Signal Processing*, Vols. 66-67, 2016, p. 665-78.
- [9] **Xu Y., Zhou J., Di L., Zhao C.** Active magnetic bearings dynamic parameters identification from experimental rotor unbalance response. *Mechanical Systems and Signal Processing*, Vol. 83, 2017, p. 228-240.
- [10] **Jin C., Xu Y., Zhou J., Cheng C.** Active magnetic bearings stiffness and damping identification from frequency characteristics of control system. *Shock and Vibration*, Vol. 2016, 2016, p. 1067506.
- [11] **Jacobs W., Boonen R., Sas P., Moens D.** The influence of the lubricant film on the stiffness and damping characteristics of a deep groove ball bearing, *Mechanical Systems and Signal Processing*, Vol. 42, 2014, p. 335-350.
- [12] **Peng J. P., Carpino M.** Calculation of stiffness and damping coefficients for elastically supported gas foil bearings. *Journal of Tribology*, Vol. 115, 1993, p. 20-27.
- [13] **San Andrés L., Chirathadam T. A., Kim T. H.** Measurement of structural stiffness and damping coefficients in a metal mesh foil bearing. *Journal of Engineering for Gas Turbines and Power*, Vol. 132, 2009, p. 032503.
- [14] **Arora V., Hoogt Van Der P. J. M., Aarts R. G. K. M., Boer De A.** Identification of stiffness and damping characteristics of axial air-foil bearings. *International Journal of Mechanics and Materials in Design*, Vol. 7, 2011, p. 231-243.
- [15] **Zhang B., Qi S., Feng S., Geng H., Sun Y., Yu L.** An experimental investigation of a microturbine simulated rotor supported on multileaf gas foil bearings with backing bump foils. *Proceedings of the Institution of Mechanical Engineers, Part J: Journal of Engineering Tribology*, Vol. 232, Issue 9, 2017, p. 1169-1180.
- [16] **Wilkes J. C., Wade J., Rimpel A., Moore J., Swanson E., Grieco J., et al.** Impact of bearing clearance on measured stiffness and damping coefficients and thermal performance of a high-stiffness generation 3 foil journal bearing. *ASME Turbo Expo 2016: Turbomachinery Technical Conference*, 2016.
- [17] **Czolczyński K.** How to obtain stiffness and damping coefficients of gas bearings. *Wear*, Vol. 201, 1996, p. 265-275.

- [18] **Dellacorte C.** Stiffness and damping coefficient estimation of compliant surface gas bearings for oil-free turbomachinery. *Tribology Transactions*, Vol. 54, 2011, p. 674-684.
- [19] **Asgharifard Sharabiani P., Ahmadian H.** Nonlinear model identification of oil-lubricated tilting pad bearings. *Tribology International*, Vol. 92, 2015, p. 533-543.
- [20] **Theisen L. R. S., Niemann H. H., Santos I. F., Galeazzi R., Blanke M.** Modelling and identification for control of gas bearings. *Mechanical Systems and Signal Processing*, Vol. 70, Issue 71, 2016, p. 1150-1170.
- [21] **Wang W., Liu B., Zhang Y., Shao X., Allaire P. E.** Theoretical and experimental study on the static and dynamic characteristics of tilting-pad thrust bearing. *Tribology International*, Vol. 123, 2018, p. 26-36.
- [22] **Tawfick S. H., El Shafei A., Mokhtar M. O. A.** Field identification of stiffness and damping characteristics of fluid film bearings. *ASME Turbo Expo 2008: Power for Land, Sea and Air*, Vol. 5, 2008, p. 1191-1201.
- [23] **Zhou H., Zhao S., Xu H., Zhu J.** An experimental study on oil-film dynamic coefficients. *Tribology International*, Vol. 37, 2004, p. 245-253.
- [24] **De Santiago O. C., San Andrés L.** Field methods for identification of bearing support parameters – part I: identification from transient rotor dynamic response due to impacts. *Journal of Engineering for Gas Turbines and Power*, Vol. 129, 2007, p. 509-517.
- [25] **Kim Y. H., Yang B. S., Tan A. C. C.** Bearing parameter identification of rotor-bearing system using clustering-based hybrid evolutionary algorithm. *Structural and Multidisciplinary Optimization*, Vol. 33, 2007, p. 493-506.
- [26] **Qu M., Chen G., Tai J.** Influence of support stiffness on aero-engine coupling vibration quantitative analysis. *Journal of Vibroengineering*, Vol. 19, Issue 8, 2017, p. 5746-5757.
- [27] **Han F., Guo X., Gao H.** Bearing parameter identification of rotor-bearing system based on Kriging surrogate model and evolutionary algorithm. *Journal of Sound and Vibration*, Vol. 332, 2013, p. 2659-2671.
- [28] **Han F., Guo X., Mo C., Gao H., Hou P.** Parameter identification of nonlinear rotor-bearing system based on improved kriging surrogate model. *Journal of Vibration and Control*, Vol. 23, 2017, p. 794-807.
- [29] **Song Z., Liu Y.** Dynamic parameter identification of hydrodynamic bearing-rotor system. *Shock and Vibration*, Vol. 2015, 2015, p. 959568.
- [30] **Li C. H.** Dynamics of rotor bearing systems supported by floating ring bearings. *Journal of Lubrication Technology*, Vol. 104, 1982, p. 469-476.
- [31] **Zhang H., Shi Z. Q., Zhen D., Gu F. S., Ball A. D.** Stability analysis of a turbocharger rotor system supported on floating ring bearings. *Journal of Physics: Conference Series*, Vol. 364, 2012, p. 012032.
- [32] **Hao Zhang, Zhanqun Shi, Shunxin Zhang, Fengshou Gu, Andrew Ball** Stability analysis for a turbocharger rotor system under nonlinear hydrodynamic forces. *Scientific Research and Essays*, Vol. 8, 2013, p. 1495-1511.
- [33] **Wang L., Bin G., Li X., Zhang X.** Effects of floating ring bearing manufacturing tolerance clearances on the dynamic characteristics for turbocharger. *Chinese Journal of Mechanical Engineering*, Vol. 28, 2015, p. 530-540.
- [34] **Adiletta G., Guido A. R., Rossi C.** Chaotic motions of a rigid rotor in short journal bearings. *Nonlinear Dynamics*, Vol. 10, 1996, p. 251-269.
- [35] **Eberhart R., Kennedy J.** A new optimizer using particle swarm theory. *Proceedings of the 6th International Symposium on Micro Machine and Human Science*, 1995.
- [36] **Hu X., Eberhart R. C., Shi Y.** Swarm intelligence for permutation optimization: a case study of n-queens problem. *Proceedings of the IEEE Swarm Intelligence Symposium*, 2003.
- [37] **Kaboli M., Ghanavati B., Akhlaghi M.** New CMOS pseudo approximation exponential function generator by modified particle swarm optimization algorithm. *Integration, the VLSI Journal*, Vol. 56, 2017, p. 70-76.
- [38] **Rao J. S.** *Rotor Dynamics*. New Age International, 1996.
- [39] **Deb K.** *Optimization for Engineering Design: Algorithms and Examples*. Prentice-Hall of India, 2004.
- [40] **Kirkpatrick S., Gelatt C. D., Vecchi M. P.** Optimization by simulated annealing. *Science*, Vol. 220, 1983, p. 671-680.

Appendix

The component forces on the journal and bearing are expressed as follows:

$$\begin{Bmatrix} f_{ix} \\ f_{iy} \end{Bmatrix} = -\frac{\sqrt{(y_i + 2\dot{x}_i) + (x_i - 2\dot{y}_i)}}{(1 - x_i \cos\theta - y_i \sin\theta)} \begin{Bmatrix} 3x_i V_i - \sin\alpha_i G_i - 2\cos\alpha_i F_i \\ 3y_i V_i - \cos\alpha_i G_i - 2\sin\alpha_i F_i \end{Bmatrix}$$

where V, G, F, α are the lubricant force variants:

$$V_i = \frac{2 + (y_i \cos\alpha_i - x_i \sin\alpha_i) G_i}{(1 - x_i^2 - y_i^2)},$$

$$G_i = \frac{\pi}{\sqrt{1 - x_i^2 - y_i^2}} - \frac{2}{\sqrt{1 - x_i^2 - y_i^2}} \tan^{-1} \left(\frac{y_i \cos\alpha_i - x_i \sin\alpha_i}{\sqrt{1 - x_i^2 - y_i^2}} \right),$$

$$F_i = \frac{(x_i \cos\alpha_i + y_i \sin\alpha_i)}{(1 - x_i^2 - y_i^2)},$$

$$\alpha_i = \tan^{-1} \left(\frac{y_i + 2\dot{x}_i}{x_i - \dot{y}_i} \right) - \frac{\pi}{2} \operatorname{sign} \left(\frac{y_i + 2\dot{x}_i}{x_i - \dot{y}_i} \right) - \frac{\pi}{2} \operatorname{sign}(y_i + 2\dot{x}_i),$$

$$\begin{Bmatrix} f_{ox} \\ f_{oy} \end{Bmatrix} = -\frac{\sqrt{(y_R + 2\dot{x}_R) + (x_R - 2\dot{y}_R)}}{(1 - x_R \cos\theta - y_R \sin\theta)} \begin{Bmatrix} 3x_R V_o - \sin\alpha_o G_o - 2\cos\alpha_o F_o \\ 3y_R V_o - \cos\alpha_o G_o - 2\sin\alpha_o F_o \end{Bmatrix}$$

$$V_o = \frac{2 + (y_R \cos\alpha_o - x_R \sin\alpha_o) G_o}{(1 - x_R^2 - y_R^2)},$$

$$G_o = \frac{\pi}{\sqrt{1 - x_R^2 - y_R^2}} - \frac{2}{\sqrt{1 - x_R^2 - y_R^2}} \tan^{-1} \left(\frac{y_R \cos\alpha_o - x_R \sin\alpha_o}{\sqrt{1 - x_R^2 - y_R^2}} \right),$$

$$F_o = \frac{(x_R \cos\alpha_o + y_R \sin\alpha_o)}{(1 - x_R^2 - y_R^2)},$$

$$\alpha_o = \tan^{-1} \left(\frac{y_R + 2\dot{x}_R}{x_R - \dot{y}_R} \right) - \frac{\pi}{2} \operatorname{sign} \left(\frac{y_R + 2\dot{x}_R}{x_R - \dot{y}_R} \right) - \frac{\pi}{2} \operatorname{sign}(y_R + 2\dot{x}_R).$$



Rajasekhara Reddy Mutra received his Master's degree in machine design specialization in mechanical engineering from JNTUA, Anantapuram, India, in 2012. Now he is pursuing Ph.D. degree in Mechanical Engineering Department from National Institute of Technology, Rourkela, India. His current research interests include rotor dynamics, vibrations, optimization and condition monitoring. He published 8 research papers in international journals.



Dr. J Srinivas is currently working as Associate Professor in the department of Mechanical Engineering, National Institute of Technology, Rourkela, India. He did his Ph.D. from Andhra University. He is an academian having a wide experience of teaching and administration. His research interests include vibrations and control, nonlinear dynamics and chaos, fault diagnosis and prognosis, dynamics of MEMS, compliant micromechanisms, experimental vibration analysis, finite element modeling, mechatronics systems, optimization-based design. He is having more than 50 research publications National/International Journals and Conferences/Seminars. In recognition of his research contributions, he has been selected as peer reviewer of several international journals.